



Department of
Transport

Boating Guide Mandurah





Marine Safety



**YOU'RE THE SKIPPER
YOU'RE RESPONSIBLE**



Safety Equipment

| | | Protected Waters lakes, rivers, inlets and estuaries except Lake Argyle | 0-2 Nautical Miles from the mainland shore | 2-5 Nautical Miles from the mainland shore | Over 5 Nautical Miles from the mainland shore |
|---|---|--|---|---|--|
|  | Recreational Skipper's Ticket The skipper of a recreational vessel, powered by a motor greater than 4.5kw (6 hp) must hold an RST. | ✓ | ✓ | ✓ | ✓ |
|  | Bilge Pump/Bailer All vessels must carry a bilge pump. Vessels under 7 metres may carry a bailer in lieu of a bilge pump. | ✓ | ✓ | ✓ | ✓ |
|  | Fire Extinguisher Vessels with an inboard engine or carrying hydrocarbon heating or cooling appliances must carry an approved fire extinguisher. | ✓ | ✓ | ✓ | ✓ |
|  | Anchor and Line An efficient anchor and line must be carried. | — | ✓ | ✓ | ✓ |
|  | Lifejacket A lifejacket bearing the label PFD Type 1 or the Australian standard AS 1512 or AS 4758 - Level 100 (or higher) must be carried for every person onboard. | — | ✓ | ✓ | ✓ |
|  | Red and Orange Flares (in date) At least two hand held red flares and two hand held orange flares must be carried. Two parachute flares may be carried in lieu of the two hand held red flares and a smoke canister may be carried in lieu of the smoke flares. | — | ✓ | ✓ | ✓ |
|  | EPIRB (in date) A 406 MHz EPIRB registered with AMSA bearing the standard AS/NZS 4280.1 must be carried if proceeding more than 2 miles from the mainland shore or more than 400 metres from an island located more than 2 miles from the mainland shore. | — | — | ✓ | ✓ |
|  | Parachute Flares (in date) A minimum of two parachute flares must be carried if operating more than 5 miles from the mainland shore or more than 1 mile from an island located more than 5 miles from the mainland shore. | — | — | — | ✓ |
|  | Marine Radio A marine radio must be carried if operating more than 5 miles from the mainland shore or more than 1 mile from an island located more than 5 miles from the mainland shore. The radio can be 27 MHz, VHF or HF. | — | — | — | ✓ |

Contacts details

Department of Transport
Marine Safety Hotline: 1300 863 308
 Email: marine.safety@transport.wa.gov.au
 Website: www.transport.wa.gov.au/imagine
 Mandurah Office: 9583 9701

Department of Fisheries
 Fisheries Mandurah: 9583 7800
 Fishwatch: 1800 815 507
 Website: www.fish.wa.gov.au

Police
 Mandurah: 9581 0222
 Pinjarra: 9531 7111
 Water Police: 9442 8600

Mandurah Water Rescue
 9535 4789
 27MHz Ch. 27.88
 VHF Ch. 16 and 73

Mandurah Offshore Fishing and Sailing Club
 9535 6251

City of Mandurah
 9550 3777
 Rangers: 9550 3777
 Marina Manager: 9550 3707

Shire of Murray
 9531 7777

Department of Parks and Wildlife
 9582 9333

Waters and Rivers
 9550 4222

Hospital
 Peel Health Campus: 9531 8000
 Murray Hospital: 9531 7222

Boating Weather Forecast
 1900 955 350
 Website: www.bom.gov.au

The information contained in this publication is provided in good faith and believed to be accurate at time of publication. The State shall in no way be liable for any loss sustained or incurred by anyone relying on the information.

June 2014

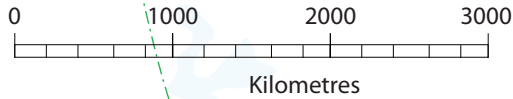
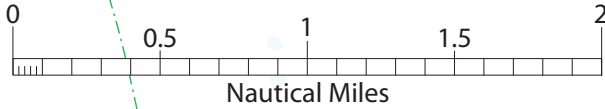
COMET BAY

NOT TO BE USED FOR NAVIGATION

For more detailed information, refer to
Department of Transport Nautical Charts
Cape Peron to Dawesville WA 913
Warnbro DMH 227
Peel Inlet and Harvey Estuary WA 848



Government of **Western Australia**
Department of **Transport**



Legend

- 5 Knot speed limit
- 8 Knot speed limit
- Mooring area
- 12 Knot speed limit
- Closed waters – All Vessels
- Closed waters – Motorised Vessels
- Water ski area
- Closed to PWC
- Swimming prohibited
- Private moorings
- Public courtesy moorings
- Beach / ramp boat launching
- Public toilet / gps validation marker
- Fuel outlet / non-powered launching

WARNING
During moderate swell,
seas may break over
depths of about 6m.

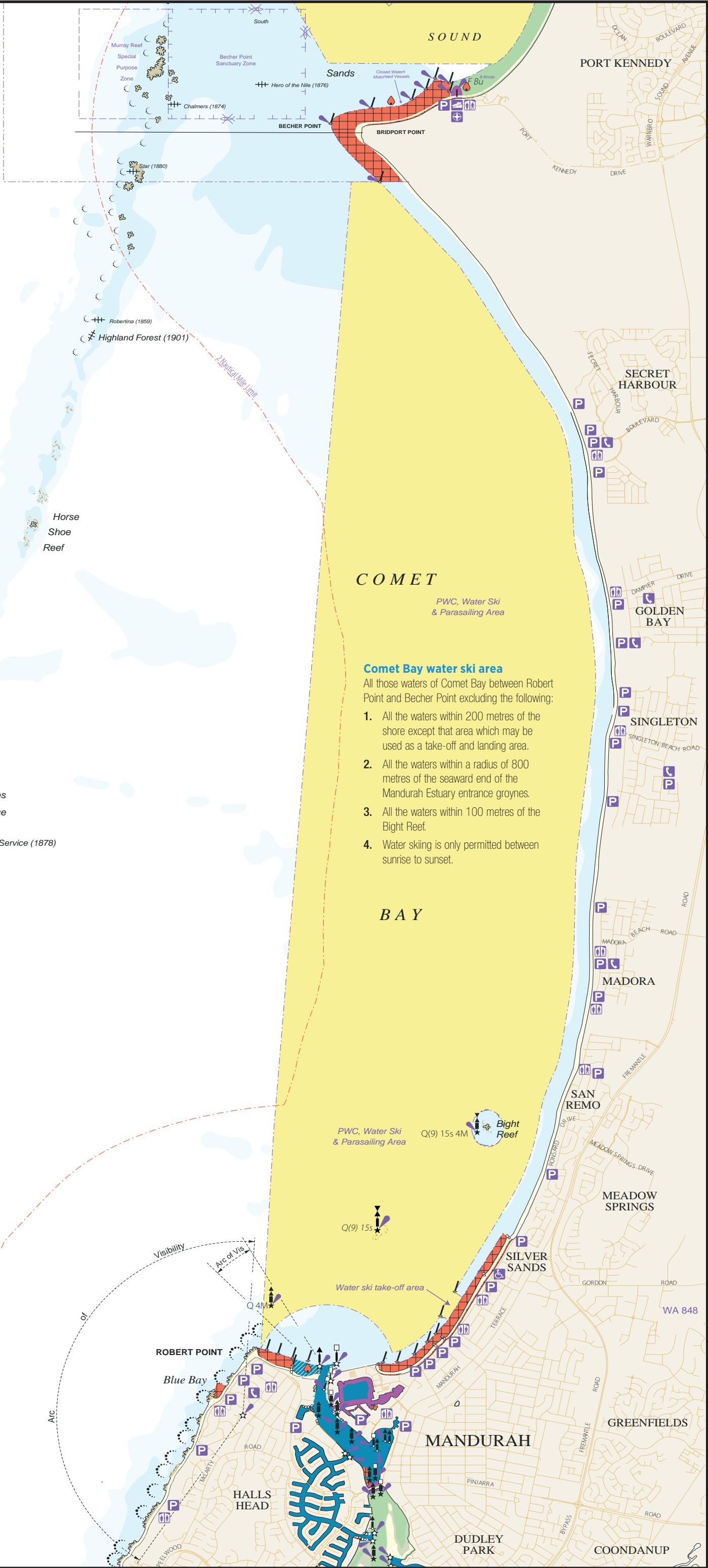
Age requirements and restrictions for skippers

A person in charge of a recreational vessel with a motor of 6hp or less is not required to hold a Recreational Skipper's Ticket (RST).

Persons under 10 years may not drive a motor boat.

A person in charge of a recreational vessel with a motor greater than 6hp is required to hold an RST.

Persons over 14 and under 16 years of age are restricted to operating during daylight hours and at a speed less than 8 knots.



COMET

PWC, Water Ski
& Parasailing Area

Comet Bay water ski area

All those waters of Comet Bay between Robert Point and Becher Point excluding the following:

1. All the waters within 200 metres of the shore except that area which may be used as a take-off and landing area.
2. All the waters within a radius of 800 metres of the seaward end of the Mandurah Estuary entrance groynes.
3. All the waters within 100 metres of the Bight Reef.
4. Water skiing is only permitted between sunrise to sunset.

BAY

PWC, Water Ski
& Parasailing Area

Q(9) 15s 4M Bight Reef

Q(9) 15s

Water ski take-off area

ROBERT POINT

Blue Bay

HALLS HEAD

MANDURAH

DUDLEY PARK

COONDANUP

PORT KENNEDY

SECRET HARBOUR

GOLDEN BAY

SINGLETON

MADORA

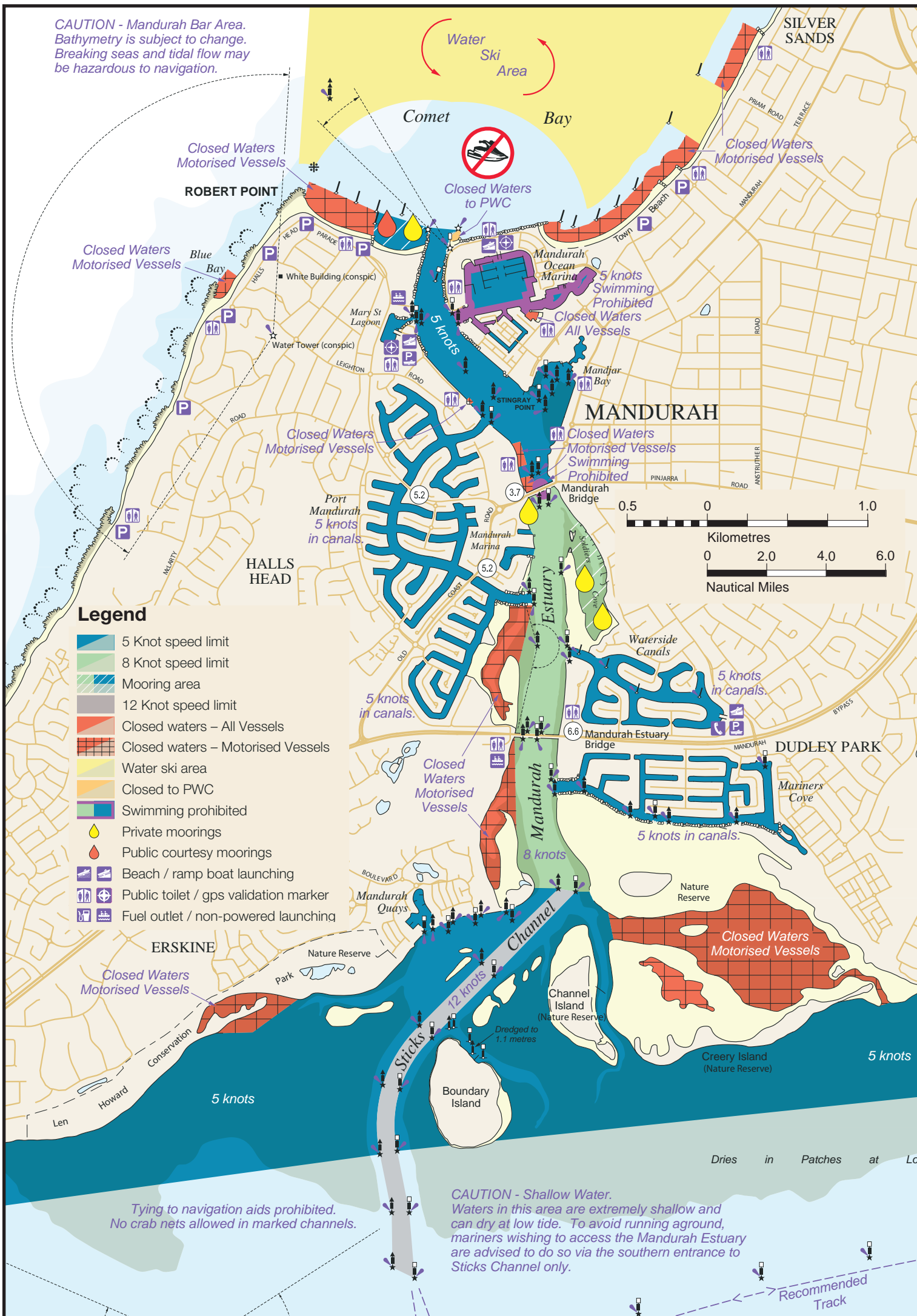
SAN REMO

MEADOW SPRINGS

GREENFIELDS

WA 848

CAUTION - Mandurah Bar Area.
Bathymetry is subject to change.
Breaking seas and tidal flow may
be hazardous to navigation.



MANDURAH INLAND WATERS

NOT TO BE USED FOR NAVIGATION

For more detailed information,
Refer to the Department of Transport's Nautical Charts
Peel Inlet and Harvey Estuary WA 848
Bouvard WA 755
Cape Peron to Dawsville WA 913

Government of Western Australia
Department of Transport

Legend

- 5 Knot speed limit
- 8 Knot speed limit
- Mooring area
- 12 Knot speed limit
- Closed waters – All Vessels
- Closed waters – Motorised Vessels
- Water ski area
- Closed to PWC
- Swimming prohibited
- Private moorings
- Public courtesy moorings
- Beach / ramp boat launching
- Public toilet / gps validation marker
- Fuel outlet / non-powered launching



CAUTION - Rock Lobster Pots.
Rock Lobster fishing may take place in this area during the official season. Mariners are advised to keep well clear of lobster pot floats and submerged lines.

CAUTION
Hazardous Entrance.
During large range tides, a current of 2 to 3 knots may be experienced in the Dawesville Channel. Moderate to heavy sea conditions may make navigation of the ocean entrance hazardous.

Closed Waters
Motorised Vessels

Closed Waters
Motorised Vessels

Closed Waters
Motorised Vessels

Closed Waters
Motorised Vessels

Closed Waters
Motorised Vessels

Closed Waters
Motorised Vessels

Closed Waters
Motorised Vessels

INDIAN

OCEAN

Cox Bay

WANNANUP

HARVEY ESTUARY

POINT GREY

DAWESVILLE

PEEL

INLET

POINT BIRCH

Austin Bay

Freestyling Personal Water Craft (PWC)
Freestyle driving, wave jumping and surfing is prohibited in all speed restricted areas.



CAUTION - Shallow Water.
Waters in this area are extremely shallow and can dry at low tide. To avoid running aground, mariners wishing to access the Mandurah Estuary are advised to do so via the southern entrance to Sticks Channel only.

CAUTION
Waters in the Peel and Harvey Estuary are shallow. For charted depths refer to Department of Transport's nautical charts.

Public courtesy moorings
Short term courtesy moorings are provided by the Department of Transport for public vessel use for up to 72 hours at the vessel owner's risk. They are a highly visible orange/red colour and are labelled with the maximum vessel length and capacity. Vessels must not be left unattended for periods greater than four hours. To use the mooring, approach the buoy from downwind and tie up using the floating rope.
Do not use the yellow moorings. It is an offence to use the yellow moorings if you do not have authorisation from the mooring owner.



Lateral Marks
indicate the port and starboard sides of a navigable channel.

Port Marks
Light: Red, any rhythm.

Starboard Marks
Light: Green, any rhythm.

Upstream
Stay on the starboard side of the channel.

Cardinal Marks
Keep NORTH of uninterrupted quick flashes

DANGER AREA
Keep WEST of 9 flashes in a group

DANGER AREA
Keep EAST of 3 flashes in a group

DANGER AREA
Keep SOUTH of 6 flashes + 1 long flash in a group

Basic rules of the waterways

Vessel Overtaking Another
Every overtaking vessel gives way (this includes sailing vessels)

Power Vessels Meeting Head On
Each vessel alters course to starboard

Power Vessels Meeting
Vessel having the other to starboard gives right of way

Power Meeting Sailing Vessel
Power gives way to sail except when sailing vessel is overtaking

Radio frequencies

VHF
Ch 16 Distress & calling
Ch 67 Safety & emergency
72, 73, 77 * Recreational & working

VHF Repeaters
21, 22, 80, 81, 82 * Recreational & working

27 MHz
Ch 88 Distress & calling
Ch 86 Safety & emergency
90, 91, 94, 96 * Recreational & working

*** Contact VMR groups for local information.**
www.dftes.wa.gov.au/contactus/pages/volunteer-mariner-rescue-services.aspx

Speed conversion chart

| knots | km/h | mph |
|-------|-------|-------|
| 1 | 1.85 | 1.15 |
| 5 | 9.25 | 5.75 |
| 8 | 14.80 | 9.20 |
| 12 | 22.20 | 13.80 |

Water skiing
Water skiing is when a person(s) is being towed behind a vessel at a speed of 8 knots or more. It takes at least three people to go water skiing:

- a driver of at least 17 years of age;
- an observer of at least 14 years of age; and
- a skier who is being towed by the vessel.

A vessel taking off with skiers shall give way to a vessel landing skiers. Water skiing is only permitted between sunrise and sunset.

CAUTION
Overhead Powerlines

Barragup Bridge

Ravenswood Bridge

CAUTION
Overhead powerlines exist at various locations over waterways on this guide.

Water Ski Area

Reduce wash
Damage to vessels, canal walls and riverbanks can be caused by a vessel's wash. Look behind you occasionally to make sure that your boat is not creating too much wash. If your wash is affecting other boats or property, slow down.

Ocean entrances
Siltation problems at the ocean entrances have been largely overcome through mechanical bypassing of sand from one side of the channel to the other. However, dangerous conditions can still develop at these locations, particularly when outgoing tides interact with incoming swell.

GPS validation markers
GPS validation markers are unique visible marks placed at a number of public boat ramps and jetties where mariners and owners of portable GPS units can validate their position and map datum settings. The markers are small, flat and yellow, similar to "cats eye" road lane markers.
For more information visit: www.transport.wa.gov.au/gps

Personal water craft (PWC)
The use of PWC is prohibited upstream of the Barragup Traffic Bridge in the Serpentine River and upstream of the Ravenswood Traffic Bridge in the Murray River. A personal flotation device (PFD) must be worn at all times whilst operating a PWC. If operating more than 400 metres from the shore the PFD must be a Type 1. If operating within 400 metres of the shore or within protected waters the PFD can be either Type 1, 2 or 3.

Bridge and powerline clearances
Clearance heights shown on this sign are in metres above highest astronomical tide (HAT). Actual clearance will vary depending on the tide and/or flood level. The height of the tide throughout the day will vary depending on astronomical and meteorological conditions.

Bridge clearances

| | |
|-------------------------|-------|
| Mandurah Bridge | 3.7m |
| Mandurah Estuary Bridge | 6.6m |
| Port Mandurah Bridge | 5.2m |
| Port Bouvard Bridge | 17.6m |
| Barragup Bridge | 2.8m |
| Ravenswood Bridge | 3.1m |
| Windich Bridge | 9.2m |

Powerline clearances

| | |
|---------------------------|------|
| Barragup Powerline | 5.8m |
| Mandurah Bridge Powerline | 5.4m |
| Ravenswood Powerline | 2.8m |