

## POEMS SOCK SCARVES, SOCKS & ACCESSORIES

AUGUST 2009









## Gothic Rib Mitts

### Skill Level

Easy

### Finished Measurements

**Circumference:** 8" (unstretched)  
**Length:** 6"

### Materials

**Yarn:** *Poems Sock* by Wisdom Yarns  
 (75% superwash wool/25% nylon;  
 100 grams/459 yards)

- 1 ball #962 Open Seas

**Needles:** US 3 (3.25mm) double  
 pointed needles OR SIZE TO  
 OBTAIN GAUGE

**Notions:** cable needle, stitch  
 markers, yarn needle

### Gauge

32 rnds and 42 sts = 4" in rev St st  
 (purl every rnd);  
 1 rep gothic rib patt = 1¼",  
 unstretched

SAVE TIME, CHECK YOUR GAUGE

### Special Abbreviations

**Cross 2 Left (C2L):** Sl 1 st to cn and  
 hold at front of work, K1, K1 from  
 cn.

**Cross 2 Right (C2R):** Sl 1 st to cn  
 and hold at back of work, K1, k1  
 from cn.

### Gothic Rib (Multiple of 12 sts)

*Gothic Rib worked in the round:*

**Rnd 1 (RS):** \* C2R, K6, C2L, P2; rep  
 from \* around.

**Rnd 2 (and all even-numbered  
 rnds):** \* K10, P2; rep from \*  
 around.

**Rnd 3:** \* K1, C2R, K4, C2L, K1, P2;  
 rep from \* around.

**Rnd 5:** \* K2, C2R, K2, C2L, K2, P2;  
 rep from \* around.

**Rnd 7:** \* K3, C2R, C2L, K3, P2; rep  
 from \* around.

**Rnd 8:** \* K10, P2; rep from \*  
 around.

Rep Rnds 1-8 for patt st.

*Gothic Rib worked in rows:*

Work as for Gothic Rib in the  
 round, working all even rows as:  
 \* K2, P10; rep from \* across.

## MITTS

### Left Mitt

Cast on 70 sts. Place marker and  
 join for working in the rnd.

**Rnd 1:** \* K1, P1; rep from \* to end.  
 Work even in K1/P1 ribbing until  
 piece measures 2" from beg.

**Next rnd:** P4, work Rnd 1 of gothic  
 rib patt across 36 sts, pm, purl to  
 end of rnd. Work even in patt as  
 established for 4 more rnds.

### Thumb Opening

**Rnd 1:** P4, work next rnd of gothic  
 rib patt as established, purl to end,  
 turn.

**Row 2:** Sl 1 pwise, knit to marker,  
 work next row of gothic rib pat as  
 established to last 4 sts, end K4.

**Row 3:** Sl 1 pwise, work in patt to  
 marker, purl to end, turn.

Rep Rows 2 and 3, 4 more times.

**Next Row (RS):** P4, work next  
 rnd of gothic rib patt, purl to end  
 and join. Work even in patt as  
 established in the rnd until piece  
 measures 6" from cast on. Bind off  
 all sts loosely in patt.

### Right Mitt

Cast on 70 sts. Place marker and  
 join for working in the rnd.

**Rnd 1:** \* K1, P1; rep from \* to end.  
 Work even in K1/P1 ribbing until  
 piece measures 2" from beg.

**Next Rnd:** P30, pm, work Rnd 1 of  
 gothic rib patt across 36 sts, end  
 P4.

Work even in patt as established  
 for 4 more rnds.

### Thumb Opening

**Rnd 1:** P30, work next rnd of  
 gothic rib patt as established to  
 last 4 sts, end P4, turn.

**Row 2:** Sl 1 pwise, work in patt as  
 established to marker, knit to end,  
 turn.

**Row 3:** Sl 1 pwise, purl to marker,  
 work in patt as established to end,  
 turn.

Rep rows 2 and 3, 4 more times.

**Next row (RS):** P30, work next rnd  
 of gothic rib patt as established to  
 last 4 sts, end P4, pm and join.

Work even in patt as established  
 in the rnd until piece measures 6"  
 from beg. Bind off all sts loosely in  
 pat.

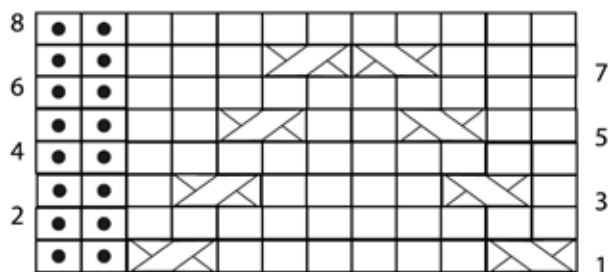
## FINISHING

Block lightly. Weave in ends.







UNIVERSAL YARN

Gothic Rib Chart in Rounds



Key

-  Knit on RS, Purl on WS
-  Purl on RS, Knit on WS
-  Sl 1 st to cn, hold at front of work  
K1, K1 from cn
-  Sl 1 st to cn, hold at back of work  
K1, K1 from cn



## Interwoven Mitts

### Skill Level

Intermediate

### Finished Measurements

**Circumference:** 8" (unstretched)

**Length:** 7"

### Materials

**Yarn:** *Poems Sock* by Wisdom Yarns (75% superwash wool/25% nylon; 100 grams/459 yards)

- 1 ball #960 Cotton Candy

**Needles:** US 3 (3.25mm) double pointed needles OR SIZE TO OBTAIN GAUGE

**Notions:** cable needle, stitch markers, yarn needle

### Gauge

32 rnds and 42 sts = 4" in rev St st (purl every rnd);

1 rep interwoven patt = 2¼", unstretched.

SAVE TIME, CHECK YOUR GAUGE

## MITTS

### Left Mitt

Cast on 64 sts. Place marker and join for working in the rnd.

**Rnd 1:** \* K1, P1; rep from \* to end.

**Rnd 2:** Rep Rnd 1.

**Next Rnd:** P7, work Rnd 1 of Interwoven Patt across 22 sts, P7, pm, purl to end of rnd. Work even in patt as established until mitt measures 3¾" from beg.

### Thumb Opening

**Rnd 1:** P7, work next rnd of Interwoven Patt across 22 sts, P7, purl to end, turn.

**Row 2:** Sl 1 pwise, knit to marker, work next row of Interwoven Patt as set to last 7 sts, end K7.

**Row 3:** Sl 1 pwise, work in pat to marker, purl to end, turn.

Rep Rows 2 and 3, 4 more times.

**Next Row (RS):** P7, work next rnd of Interwoven Patt, purl to end and join.

Work even in the rnd in patt as established until piece measures 7" from cast on. Bind off all sts loosely in pat.

### Right Mitt

Cast on 64 sts. Place marker and join for working in the rnd.

**Rnd 1:** \* K1, P1; rep from \* to end.

**Rnd 2:** Rep Rnd 1.

**Next Rnd:** P28 sts, pm, P7, work rnd 1 of Interwoven Patt across 22 sts, end P7.

Work even in patt as established until mitt measures 3¾" from beg.

### Thumb Opening

**Rnd 1:** P28, sl m, P7, work next rnd of Interwoven Patt across 22 sts, P7, turn.

**Row 2:** Sl 1 pwise, K7, work next rnd of Interwoven Patt across 22 sts, purl to end, turn.

**Row 3:** Sl 1 pwise, purl to marker, work in patt to end, turn.

Rep Rows 2 and 3, 4 more times.

**Next Row (RS):** P28, sl marker, P7, work next rnd of interwoven pat, P7, and join.

Work even in the rnd in patt as established until piece measures 7" from cast on. Bind off all sts loosely in pat.

## FINISHING

Block lightly. Weave in ends.

## Special Abbreviations

**Cross 2 Left (C2L):** Sl 1 st to cn and hold at front of work, K1, K1 from cn.

**Cross 2 Right (C2R):** Sl 1 st to cn and hold at back of work, K1, k1 from cn.

**Twist 2 Front (T2F):** Sl 1 st to cn and hold at front of work, P1, K1 from cn.

**Twist 2 Back (T2B):** Sl 1 st to cn and hold at back of work, K1, P1 from cn.

## Interwoven Patt in the Round

(Worked over a panel of 22 sts)

**Rnd 1 (RS):** K1tbl, \* P2, K1tbl; rep from \* to end.

**Rnd 2:** Rep Rnd 1.

**Rnd 3:** \* K1tbl, P2; rep from \* twice more, T2F, T2B, \* P2, K1tbl; rep from \* twice more.

**Rnd 4:** \* K1tbl, P2; rep from \* twice more, P1, K2, P1, \* P2, K1tbl; rep from \* twice more.

**Rnd 5:** \* K1tbl, P2; rep from \* once more, T2F, P2, C2L, P2, T2B, \* P2, K1tbl; rep from \* once more.

**Rnd 6:** \* K1tbl, P2; rep from \* once more, P1, K1tbl, P2, K2, P2, K1tbl, P1, \* P2, K1tbl; rep from \* once more.

**Rnd 7:** K1tbl, \* P2, T2F; rep from \* once more, T2B, T2F, \* T2B, P2; rep from \* once more, K1tbl.

**Rnd 8:** \* K1tbl, P3; rep from \* once, K2, P2, K2, \* P3, K1tbl; rep from \* once more.

**Rnd 9:** \* T2F, P2; rep from \* once more, \* C2R, P2; rep from \* once more, T2B, P2, T2B.

**Rnd 10:** P1, K1tbl, P3, K1tbl, P2, \* K2, P2; rep from \* once more, K1tbl, P3, K1tbl, P1.

**Rnd 11:** P1, T2F, P2, \* T2F, T2B; rep from \* twice more, P2, T2B, P1.

**Rnd 12:** P2, K1tbl, P3, K2, \* P2, K2; rep from \* once more, P3, K1tbl, P2.

**Rnd 13:** P2, T2F, P2, \* C2L, P2; rep from \* twice more, P2, T2B, P2.

**Rnd 14:** P3, K1tbl, P2, \* K2, P2; rep from \* twice more, K1tbl, P3.

**Rnd 15:** P3, \* T2F, T2B; rep from \* 3 more times, P3.

**Rnd 16:** P4, K2, \* P2, K2; rep from \* twice more, P4.

**Rnd 17:** P4, C2R, \* P2, C2R; rep from \* twice more, P4.

**Rnd 18:** Rep Rnd 16.

**Rnd 19:** P3, \* T2B, T2F; rep from \* 3 more times, P3.

**Rnd 20:** Rep Rnd 14.

**Rnd 21:** P3, K1tbl, P2, \* C2L, P2; rep from \* twice more, K1tbl, P3.

**Rnds 22-25:** Rep Rnds 14-17.

**Rnd 26:** Rep Rnd 16.

**Rnd 27:** Rep Rnd 19.

**Rnd 28:** Rep Rnd 14.

**Rnd 29:** P2, T2B, P2, \* C2L, P2; rep from \* twice more, P2, T2F, P2.

**Rnd 30:** Rep Rnd 12:

**Rnd 31:** P1, T2B, P2, \* T2B, T2F; rep from \* twice more, P2, T2F, P1.

**Rnd 32:** Rep Rnd 10.

**Rnd 33:** \* T2B, P2; rep from \* once, \* C2R, P2; rep from \* once, T2F, P2, T2F.

**Rnd 34:** Rep Rnd 8.

**Rnd 35:** K1tbl, P2, T2B, P2, \* T2B, T2F; rep from \* once, P2, T2F, P2, K1tbl.

**Rnd 36:** Rep Rnd 6.

**Rnd 37:** \* K1tbl, P2; rep from \* once, T2B, P2, C2L, P2, T2F, \* P2, K1tbl; rep from \* once.

**Rnd 38:** Rep Rnd 4.

**Rnd 39:** \* K1tbl, P2; rep from \* twice more, T2B, T2F, \* P2, K1tbl; rep from \* twice more.

**Rnd 40:** Rep Rnd 2.

**Rnds 41 and 42:** Rep Rnds 1-2. Rep Rnds 1-42 for pat st.

## Interwoven Patt in Rows

(Worked over a panel of 22 sts)

**Row 1 (RS):** K1tbl, \* P2, K1tbl; rep from \* to end.

**Row 2:** P1tbl, \* K2, P1tbl; rep from \* to end.

**Row 3:** \* K1tbl, P2; rep from \* twice more, T2F, T2B, \* P2, K1tbl; rep from \* twice more.

**Row 4:** P1tbl, \* K2, P1tbl; rep from \* once more, K3, P2, K3, P1tbl, \* K2, P1tbl; rep from \* once more.

**Row 5:** \* K1tbl, P2; rep from \* once more, T2F, P2, C2L, P2, T2B, \* P2, K1tbl; rep from \* once more.

**Row 6:** P1tbl, K2, P1tbl, K3, P1tbl, K2, P2, K2, P1tbl, K3, P1tbl, K2, P1tbl.

**Row 7:** K1tbl, \* P2, T2F; rep from \* once more, T2B, T2F, \* T2B, P2; rep from \* once more, K1tbl.

**Row 8:** \* P1tbl, P3; rep from \* once more, P2, K2, P2, \* K3, P1tbl; rep from \* once more.

**Row 9:** \* T2F, P2; rep from \* once more, \* C2R, P2; rep from \* once more, T2B, P2, T2B.

**Row 10:** K1, P1tbl, K3, P1tbl, K2, \* P2, K2; rep from \* once more, P1tbl, K3, P1tbl, K1.

**Row 11:** P1, T2F, P2, \* T2F, T2B; rep from \* twice more, P2, T2B, P1.

**Row 12:** K2, P1tbl, K3, P2, \* K2, P2; rep from \* once more, K3, P1tbl, K2.

**Row 13:** P2, T2F, P2, \* C2L, P2; rep from \* twice more, P2, T2B, P2.

**Row 14:** K3, P1tbl, K2, \* P2, K2; rep from \* twice more, P1tbl, K3.

**Row 15:** P3, \* T2F, T2B; rep from \* 3 more times, P3.

**Row 16:** K4, P2, \* K2, P2; rep from \* twice more, K4.

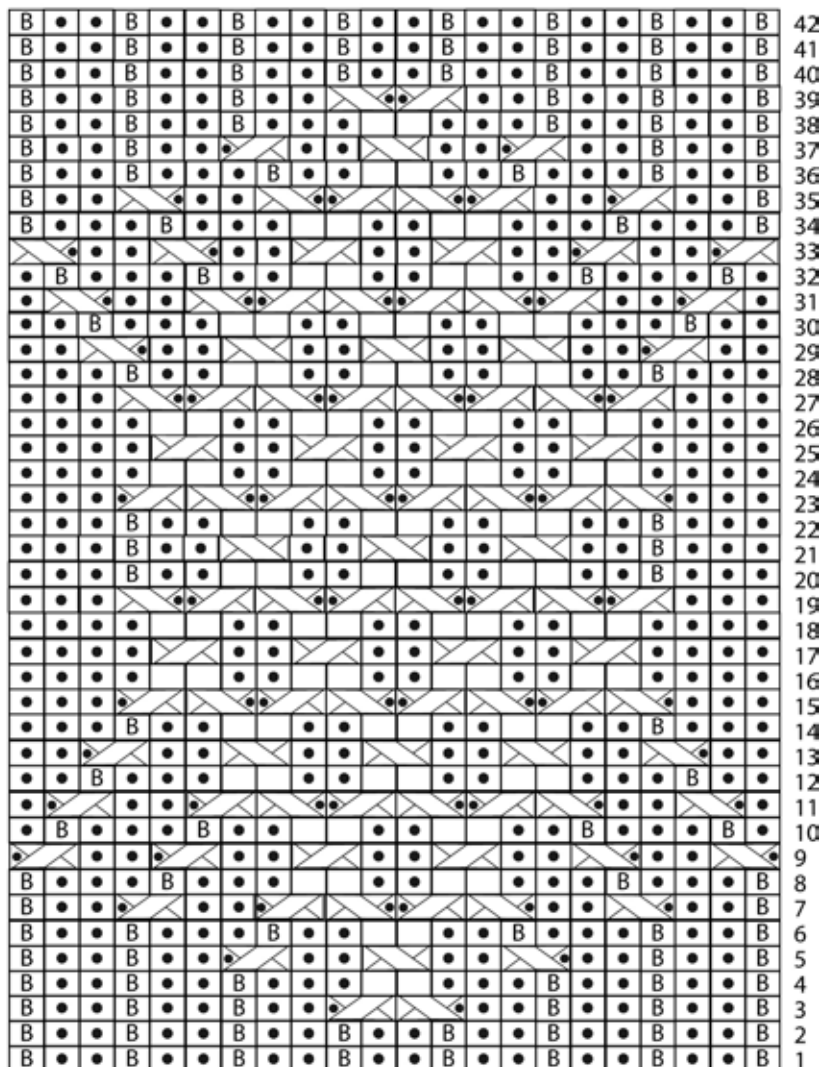
**Row 17:** P4, C2R, \* P2, C2R; rep from \* twice more, P4.

**Row 18:** Rep Row 16.


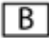





**Row 19:** P3, \* T2B, T2F; rep from \* 3 more times, P3.

Interwoven Chart

**Row 20:** Rep Row 14.  
**Row 21:** P3, K1tbl, P2, \* C2L, P2; rep from \* twice more, K1tbl, P3.  
**Rows 22-25:** Rep Rows 14-17.  
**Row 26:** Rep Row 16.  
**Row 27:** Rep Row 19.  
**Row 28:** Rep Row 14.  
**Row 29:** P2, T2B, P2, \* C2L, P2; rep from \* twice more, P2, T2F, P2.  
**Row 30:** Rep Row 12:  
**31:** P1, T2B, P2, \* T2B, T2F; rep from \* twice more, P2, T2F, P1.  
**Row 32:** Rep Row 10.  
**Row 33:** \* T2B, P2; rep from \* once, \* C2R, P2; rep from \* once, T2F, P2, T2F.  
**Row 34:** Rep Row 8.  
**Row 35:** K1tbl, P2, T2B, P2, \* T2B, T2F; rep from \* once, P2, T2F, P2, K1tbl.  
**Row 36:** Rep Row 6.  
**Row 37:** \* K1tbl, P2; rep from \* once, T2B, P2, C2L, P2, T2F, \* P2, K1tbl; rep from \* once.  
**Row 38:** Rep Row 4.  
**Row 39:** \* K1tbl, P2; rep from \* twice more, T2B, T2F, \* P2, K1tbl; rep from \* twice more.  
**Row 40:** Rep Row 2.  
**Rows 41 and 42:** Rep Rows 1 and 2.  
 Rep Rows 1-42 for patt st.



Key

-  Knit on RS, Purl on WS
-  Knit 1 through back loop on RS, Purl 1 through back loop on WS
-  Purl on RS, Knit on WS
-  Sl 1 to cn, hold at back of work, K1, K1 from cn
-  Sl 1 to cn and hold at front of work K1, K1 from cn
-  Sl 1 to cn, hold at back of work K1, P1 from cn
-  Sl 1 to cn and hold at front of work P1, K1 from cn







## Simple Running Socks

### Skill Level

Easy

### Finished Measurements

**Foot Circumference:** 7 (7½, 8)''

**Foot Length:** 8 (9, 10)''

### Materials

**Yarn:** *Poems Sock* by Wisdom Yarns (75% superwash wool/25% nylon; 100 grams/459 yards)

- 1 ball #962 Open Seas

**Needles:** US 1 (2.25mm) double pointed needles

**Notions:** Size D-3 (3.25mm) crochet hook, stitch marker, yarn needle

### Gauge

32 rnds and 48 sts = 4'' in St st (knit every rnd).

SAVE TIME, CHECK YOUR GAUGE.

**Pattern Note:** Sock is worked from the toe up and is worked in rounds until the foot opening. At this point, work back and forth in rows, and then knit until piece measure the total foot length. Graft the stitches together for a bump-free heel.

## SOCK

### Toe

Cast on 16 sts using a figure 8 cast on. Divide sts between 3 dpns as foll: 4 sts on ndl 1, 8 sts on ndl 2, 4 sts on ndl 3. Place marker, and join.

Knit 1 rnd.

**Inc Rnd:** Knit to last st on ndl 1, M1, K1; on ndl 2, K1, M1, knit to last st on ndl 2, M1, K1; on ndl 3, K1, M1, knit to end (4 sts increased).

Knit 1 rnd.

Rep last 2 rnds, 9 (10, 11) more times—56 (60, 64) sts.

### Foot

**Next Rnd:** Knit. Work even in St st until piece measures 5 (6, 7)'', or approximately 3'' less than desired total foot length.

### Heel

**Next Rnd:** K24 (26, 28) sts, bind off 8 sts, K24 (26, 28) sts.

**Next Row:** Remove marker, K24 (26, 28) sts, turn.

**Next Row (WS):** P48 (52, 56) sts. Working back and forth in rows, work even in St st until piece measures 8 (9, 10)'' from beg, ending after a WS row.

## FINISHING

Graft rem sts tog to form back of sock.

### Edging

Using crochet hook, join yarn with a sl st at back of sock and loosely work 1 rnd sc around foot opening; join with a sl st in first sc.

**Next rnd:** Ch 1 (counts as first sc), \* sc in next st, ch 3, sl st in same st, sc in next 3 sts; rep from \* around; join with a sl st in first sc, and fasten off. Weave in ends. Block sock if desired.



UNIVERSAL YARN



## Simple Ankle Socks

### Skill Level

Intermediate

### Finished Measurements

**Foot Circumference:** 7 (7½, 8)''

**Foot Length:** 8 (9, 10)''

### Materials

**Yarn:** Poems Sock by **Wisdom Yarns** (75% superwash wool/25% nylon; 100 grams/459 yards)

- 1 ball #963 Girly Girl

**Needles:** US 1 (2.25mm) double pointed needles, set of 5

**Notions:** stitch marker, yarn needle

### Gauge

32 rnds and 48 sts = 4'' in St st (knit every rnd).

SAVE TIME, CHECK YOUR GAUGE.

**Pattern Note:** Sock is worked from the top up with a simple heel flap and a few rounds of ribbing to surround your ankle.

## SOCK

### Toe

Cast on 16 sts using a figure 8 cast on. Divide sts between 3 dpns as foll: 4 sts on ndl 1, 8 sts on ndl 2, 4 sts on ndl 3. Place marker, and join.

Knit 1 rnd.

**Inc Rnd:** Knit to last st on ndl 1, M1, K1; on ndl 2, K1, M1, knit to last st on ndl 2, M1, K1; on ndl 3, K1, M1, knit to end (4 sts increased).

Knit 1 rnd.

Rep last 2 rnds, 9 (10, 11) more times – 56 (60, 64) sts.

### Foot

**Next Rnd:** Knit. Work even St st until piece measures 6 (7, 8)'' from beg or until piece measures 2'' less than desired total foot length.

### Shape Heel

**Row 1:** K16 (17, 18) sts, turn.

**Row 2 (WS):** Sl 1 pwise, P30 (32, 34) sts – 31 (33, 35) heel sts.

Redistribute 27 (29, 31) sts for instep to 2 dpns, and hold for leg.

**Row 3:** Sl 1 pwise, knit to end.

**Row 4:** Sl 1 pwise, purl to end.

Rep Rows 3 and 4, 6 (7, 8) more times.

Rep Row 3 once more and break yarn.

### Turn Heel

Redistribute heel sts as follows: sl 9 (10, 11) sts to ndl 1, sl 11 sts to ndl 2, sl 9 (10, 11) sts to ndl 3, cont to hold 27 (29, 31) instep sts for leg on ndl 4.

With RS facing, join yarn at start of ndl 2.

**Row 1 (RS):** With fifth ndl, K10, sl last st kwise, sl first st from ndl 3 kwise, K2tog tbl (1 heel st joined).

**Row 2:** Sl 1 pwise, P9, P2tog joining last st from ndl 2 to first st from ndl 1 (1 heel st joined).

**Row 3:** Sl 1 pwise, K9, SSK joining last st from ndl 2 and first st from ndl 3.

**Row 4:** Sl 1 pwise, P9, P2tog joining last st from ndl 2 and first st from ndl 1.

Rep Rows 3 and 4, 7 (8, 9) more times – 11 sts rem.

### Leg

**Next Rnd:** K11 (heel turn sts), pick up and knit 9 (10, 11) sts along left-hand side of heel flap, K27 (29, 31) sts on hold for instep, pick up and knit 9 (10, 11) sts along right-hand side of heel flap, K5 – 56 (60, 64) sts. Place marker to note new start of rnd. Continue in St st until leg measures 1'' from picked up sts.

**Next Rnd:** \* K1, P1; rep from \* to end. Work even in k1/p1 ribbing for 7 more rnds. Bind off all sts loosely.

## FINISHING

Weave in ends. Block socks if desired.



## Cabled Ankle Socks

### Skill Level

Intermediate

### Finished Measurements

**Foot Circumference:** 7 (7½, 8)''

**Foot Length:** 8 (9, 10)''

### Materials

**Yarn:** *Poems Sock* by **Wisdom Yarns** (75% superwash wool/25% nylon; 100 grams/459 yards)

- 1 ball #961 Spa Shades

**Needles:** US 1 (2.25mm) double pointed needles, set of 5

**Notions:** cable needle, stitch marker, yarn needle

### Gauge

32 rnds and 48 sts = 4'' in St st (knit every rnd).

SAVE TIME, CHECK YOUR GAUGE

### Wheat Ear Cable Pattern

(Panel of 17 sts)

**Rnd 1:** P4, K9, P4.

**Rnd 2:** P4, K3, K1 wrapping yarn around ndl 3 times, K1, K1 wrapping yarn around ndl 3 times, K3, P4.

**Rnd 3:** P4, K3, sl 1 pwise allowing extra loops to fall from ndl, K1, sl 1 pwise allowing extra loops to fall from ndl, K3, P4.

**Rnd 4:** P4, sl 3 sts to cn and hold at back of work, K1 (elongated st), K3 from cn, K1, sl 1 to cn (elongated st) and hold at front of work, K3, K1 from cn, P4.

**Rnds 5 and 6:** Rep rnd 1.

Rep Rnds 1-6 for patt st.

**Pattern Note:** Sock is worked from the toe up. The cable pattern starts after the toe increases are complete and travels along the center of the instep.

## SOCK

### Toe

Cast on 16 sts using a figure-8 cast on. Divide sts between 3 dpns as foll: 4 sts on ndl 1, 8 sts on ndl 2, 4 sts on ndl 3. Place marker, and join.

Knit 1 rnd.

**Inc Rnd:** Knit to last st on ndl 1, M1, K1; on ndl 2, K1, M1, knit to last st on ndl 2, M1, K1; on ndl 3, K1, M1, knit to end (4 sts increased).

Knit 1 rnd.

Rep last 2 rnds, 9 (10, 11) more times – 56 (60, 64) sts.

### Foot

**Next Rnd:** K14 (15, 16) sts across ndl 1, K6 (7, 8), work rnd 1 of pat st across 17 sts, K5 (6, 7) sts across ndl 2, K14 (15, 16) sts across ndl 3. Work even in patt as established until piece measures 6 (7, 8)'' from beg or until foot measures 2'' less than total desired length.

### Shape Heel

**Row 1:** K16 (17, 18) sts, turn.

**Row 2 (WS):** Sl 1 pwise, P30 (32, 34) sts – 31 (33, 35) heel sts.

Redistribute 27 (29, 31) sts for instep to 2 dpns, and hold for leg.

**Row 3:** Sl 1 pwise, knit to end.

**Row 4:** Sl 1 pwise, purl to end.

Rep Rows 3 and 4, 6 (7, 8) more times.

Rep Row 3 once more and break yarn.

### Turn Heel

Redistribute heel sts as foll: sl 9 (10, 11) sts to ndl 1, sl 11 sts to ndl 2, sl 9 (10, 11) sts to ndl 3, cont to hold 27 (29, 31) instep sts for leg on ndl 4. With RS facing, join yarn at start of ndl 2.

**Row 1 (RS):** With fifth ndl, K10, sl last st kwise, sl first st from ndl 3 kwise, K2tog tbl. (1 heel st joined).

**Row 2:** Sl 1 pwise, P9, P2tog joining last st from ndl 2 to first st from ndl 1. (1 heel st joined).

**Row 3:** Sl 1 pwise, K9, SSK joining last st from ndl 2 and first st from ndl 3.

**Row 4:** Sl 1 pwise, P9, P2tog joining last st from ndl 2 and first st from ndl 1.

Rep Rows 3 and 4, 7 (8, 9) more times – 11 sts rem.

### Leg

**Next Rnd:** K11 (heel turn sts), pick up and knit 9 (10, 11) sts along left-hand side of heel flap, work in pat across 27 (29, 31) sts on hold for instep, pick up and knit 9 (10, 11) sts along right-hand side of heel flap, K5 – 56 (60, 64) sts. Place marker to note new start of rnd.

Cont in patt as established until leg measures 1'' from picked up sts.

**Next Rnd:** \* K2, P2; rep from \* to end. Work even in k2/p2 ribbing for 7 more rnds. Bind off all sts loosely.

## FINISHING

Weave in ends. Block socks if desired.



## Double Moss Socks

### Skill Level

Intermediate

### Finished Measurements

**Foot Circumference:** 7 (7½, 8)''

**Foot Length:** 8 (9, 10)''

### Materials

**Yarn:** *Poems Sock* by Wisdom Yarns (75% superwash wool/25% nylon; 100 grams/459 yards)

- 1 ball #958 Cruise

**Needles:** US 1 (2.25mm) double pointed needles, set of 5

**Notions:** stitch marker, yarn needle

### Gauge

32 rnds and 48 sts = 4'' in St st (knit every rnd).

SAVE TIME, CHECK YOUR GAUGE

**Pattern Note:** Sock is worked from the toe up. A band of ribbing surrounds your ankle and the cuff features a checkerboard pattern formed by working the Double-Moss stitch pattern.

## SOCK

### Toe

Cast on 16 sts using a figure 8 cast on. Divide sts between 3 dpns as foll: 4 sts on ndl 1, 8 sts on ndl 2, 4 sts on ndl 3. Place marker, and join.

Knit 1 rnd.

**Inc Rnd:** Knit to last st on ndl 1, M1, K1; on ndl 2, K1, M1, knit to last st on ndl 2, M1, K1; on ndl 3, K1, M1, knit to end. (4 sts inc'd).

Knit 1 rnd.

Rep last 2 rnds, 9 (10, 11) more times – 56 (60, 64) sts.

### Foot

**Next Rnd:** Knit. Work even St st until piece measures 6 (7, 8)'' from beg or 2'' less than desired foot length.

### Shape Heel

**Row 1 (RS):** K16 (17, 18) sts, turn.

**Row 2:** Sl 1 pwise, P30 (32, 34) sts – 31 (33, 35) heel sts. Redistribute 27 (29, 31) sts for instep to 2 dpns, and hold for leg.

**Row 3:** Sl 1 pwise, knit to end.

**Row 4:** Sl 1 pwise, purl to end.

Rep Rows 3 and 4, 6 (7, 8) times.

Rep Row 3 once more and break yarn.

### Turn Heel

Redistribute heel sts as foll: sl 9 (10, 11) sts to ndl 1, sl 11 sts to ndl 2, sl 9 (10, 11) sts to ndl 3, cont to hold 27 (29, 31) instep sts for leg on ndl 4. With RS facing, join yarn at start of ndl 2.

**Row 1 (RS):** With fifth ndl, K10, sl last st kwise, sl first st from ndl 3 kwise, K2tog tbl (1 heel st joined).

**Row 2:** Sl 1 pwise, P9, P2tog joining last st from ndl 2 to first st from ndl 1 (1 heel st joined).

**Row 3:** Sl 1 pwise, K9, SSK joining last st from ndl 2 and first st from ndl 3.

**Row 4:** Sl 1 pwise, P9, P2tog joining last st from ndl 2 and first st from ndl 1.

Rep Rows 3 and 4, 7 (8, 9) more times – 11 sts rem.

### Leg

**Next Rnd:** K11 (heel turn sts), pick up and knit 9 (10, 11) sts along left-hand side of heel flap, K27 (29, 31) sts on hold for instep, pick up and knit 9 (10, 11) sts along right-hand side of heel flap, K5 – 56 (60, 64) sts. Place marker to note new start of rnd.

**Next Rnd:** \* K1, P1; rep from \* to end. Work even in K1/P1 ribbing until leg measures 2'' from picked up sts.

### Cuff

**Rnds 1 and 2:** \* K2, P2; rep from \* to end.

**Rnds 3 and 4:** \* P2, K2; rep from \* to end.

Rep these 4 rnds until leg measures 4'' from picked up sts.

**Next rnd:** \* K2, P2; rep from \* to end.

Work even in k2/p2 ribbing for 5 more rnds. Bind off all sts loosely.

## FINISHING

Weave in ends. Block socks if desired.



UNIVERSAL YARN

## ABBREVIATIONS

beg - beginning  
ch - chain  
cont - Continue  
dpns - double pointed needles  
foll - follows  
K - Knit  
K2tog - knit 2 together  
M1 - Make 1 stitch  
m - marker  
ndl - needle  
PSSO - pass slipped stitch over  
P2SSO - pass 2 slipped stitches over  
patt - pattern  
pm - place marker  
P - Purl  
pwise - purlwise  
rem - remaining  
rep - repeat  
rev - reverse  
rnd (s) - round (s)  
RS - right side  
sc - single crochet  
Sl - slip  
St (s) - stitches  
St st - Stockinette stitch  
SSK - slip 2 stitches one at a time knitwise, K2tog through back loops  
tbl - through back loops  
tog - together  
WS - wrong side  
YO - yarnover