

...NORTHAMPTON COUNTY VIRGINIA DAMAGE SURVEY RESULTS...

A SURVEY OF THE DAMAGE IN THE CAPE CHARLES...CHERRYSTONE...CHERITON AND OYSTER AREAS OF NORTHAMPTON COUNTY VA REVEALED THAT AN EF-1 TORNADO...STRAIGHT LINE WIND DAMAGE...AND A LARGE SWATH OF HAIL OCCURRED WITH THE STORM THAT MOVED ACROSS THAT AREA THIS MORNING. THE FOLLOWING IS A SUMMARY OF THE VARIOUS EVENTS.

EVENT 1 - EF-1 TORNADO

LOCATION...TORNADO BEGAN IN THE CHESAPEAKE BAY...A FEW MILES WEST OF CHERRYSTONE CAMPGROUND...BASED UPON PHOTOGRAPHS. THE TORNADO THEN TRACKED EASTWARD...AFFECTING THE NORTHERN PORTIONS OF CHERRYSTONE CAMPGROUND. THE TORNADO THEN CONTINUED EASTWARD ACROSS OLD CHERRYSTONE ROAD...AND U.S. ROUTE 13...BEFORE LIFTING NEAR SEASIDE ROAD CLOSE TO THE NORTHAMPTON LANDFILL.

DATE...JULY 24 2014
ESTIMATED TIME...8:25 AM TO 8:40 AM EDT
MAXIMUM EF-SCALE RATING...EF-1
ESTIMATED MAXIMUM WIND SPEED...80 TO 100 MPH
MAXIMUM PATH WIDTH...150 YARDS
PATH LENGTH...APPROX. 8 MILES...SOME OF THAT OVER WATER
BEGINNING LAT/LON...37.2893N / 76.0710W
ENDING LAT/LON...37.2976N / 75.9315W
* FATALITIES...2
* INJURIES...36

* DAMAGE DETAILS...MANY TREES DOWN OR SNAPPED OFF. NUMEROUS CAMPING TRAILERS DAMAGED...SEVERAL DESTROYED. SEVERAL TREES ON CABINS.

EVENT 2 - DOWNBURST STRAIGHT LINE WIND DAMAGE. WINDS ESTIMATED BETWEEN 65 AND 75 MPH. DAMAGE PATH EXTENDED FROM SOUTHERN PORTIONS OF CHERRYSTONE CAMPGROUND SOUTHWARD INTO CAPE CHARLES...THEN EASTWARD THROUGH CHERITON TO OYSTER. MOST SIGNIFICANT DAMAGE FROM CHERRYSTONE CAMPGROUND EASTWARD TO JUST EAST OF ROUTE 13 IN CHERITON...AND SOUTHWARD TO JUST NORTH OF THE INTERSECTION OF U.S. ROUTE 13 AND ROUTE 184 EAST OF CAPE CHARLES. NUMEROUS TREES WERE DOWNED...SNAPPED OFF OR LARGE LIMBS BLOWN OUT. COUPLE OF TREES ON HOMES. SEVERAL LARGE CAMPING TRAILERS OVERTURNED IN CHERRYSTONE CAMPGROUND.

EVENT 3 - HAIL...GOLFBALL SIZE...WITH A FEW REPORTS OF BASEBALL SIZE HAIL NEAR CHERRYSTONE CAMPGROUND...FELL IN A ONE HALF TO THREE QUARTER MILE WIDE SWATH FROM CHERRYSTONE CAMPGROUND EASTWARD TO OYSTER. CONSIDERABLE LEAF DEBRIS FROM TREES...AND NOTICEABLE CROP DAMAGE ASSOCIATED WITH THE HAIL. IN ADDITION...HAIL COMBINED WITH STRONG WINDS DAMAGE THE SIDING ON A NUMBER OF HOMES.

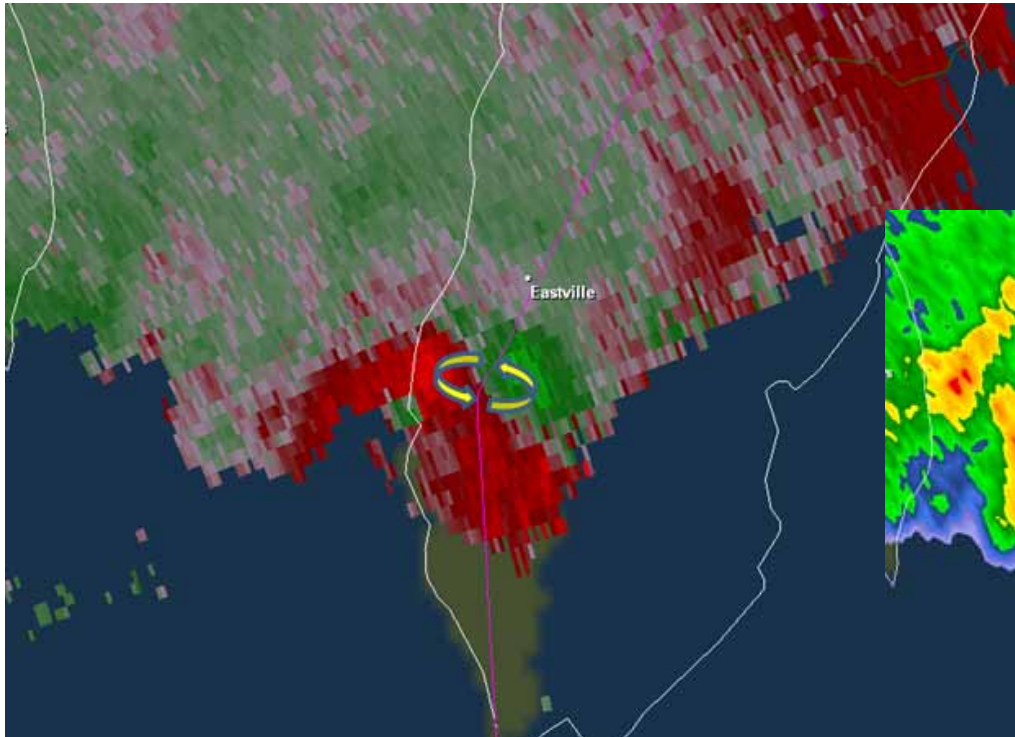
NOTE...THE INFORMATION IN THIS STATEMENT IS PRELIMINARY AND SUBJECT TO CHANGE PENDING FINAL REVIEW OF THE EVENT(S) AND PUBLICATION IN NWS STORM DATA.

\$\$

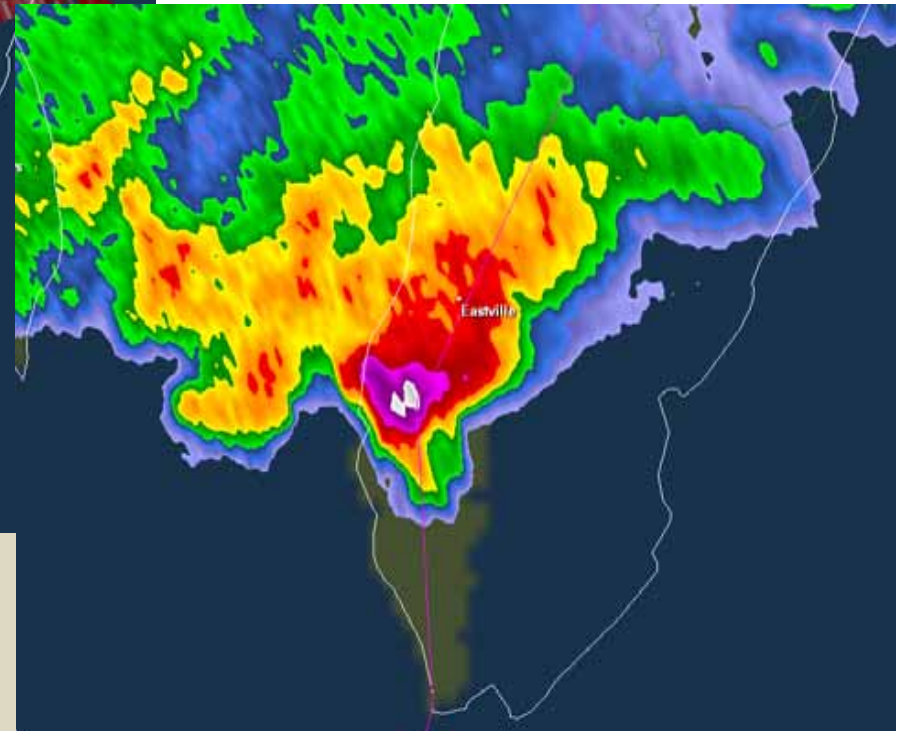
BILL SAMMLER
NATIONAL WEATHER SERVICE
WAKEFIELD VA

Cherrystone (Northampton, VA) Tornado

July 24, 2014 – 831 AM

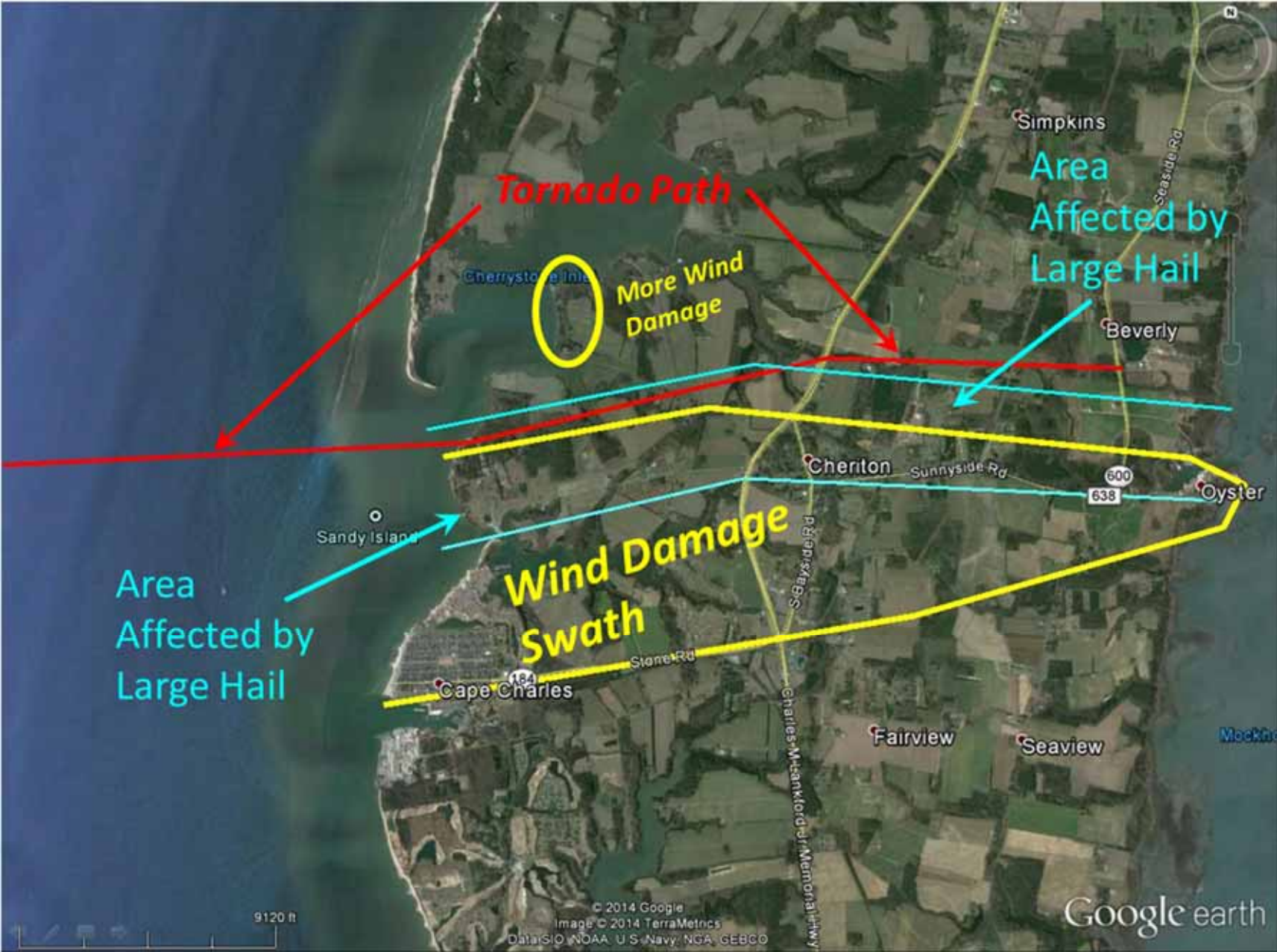


Radar Storm Relative Velocity at 831 am. The circulation which eventually became a tornado actually began as a strong waterspout over the Chesapeake Bay. A Special Marine Warning was issued at 8:05 AM, and a Tornado Warning was issued at 8:20 AM for Northampton County.



Radar Base Reflectivity at 831 am. Many trees were downed or snapped off along the tornado path. Large hail to the size of baseballs were observed from the Campground east to the town of Oyster.

Damage Survey Map



Storm Related Pictures - Tornado



Storm Related Pictures - Downburst



Storm Related Pictures - Hail

