

OCTOBER, 1965
ONE SHILLING

Table Tennis

*The Official Magazine of the
English Table Tennis Association*



THE INSIGNIA FOR THE

European Championships

Wembley, April 13—20, 1966

Table Tennis

Official Magazine of the

English Table Tennis Association

Edited by W. HARRISON EDWARDS

Published by Walthamstow Press, Ltd., Guardian House, 644 Forest Road, London, E.17

Vol. 24

OCTOBER, 1965

No. 1

TO WEMBLEY—APRIL, 1966

THE English Table Tennis Association has once again demonstrated its enterprise and courage by undertaking, at comparatively short notice, to organise the 1966 European Table Tennis Championships at the Empire Pool and Sports Arena, Wembley, from April 13th to 20th, 1966.

It will be twelve years since a table tennis event of this magnitude was last staged in this country, and it is interesting that the number of Associations participating is likely to be approximately the same as took part in the World Championships in 1954.

The decision to undertake the task involved taking calculated risks, more especially concerning the participation of the German D.T.T.V. and also the substantial financial commitment in running an event of this size. The determining factor was not merely the honour of being host Association but, and more important, the opportunity to give a boost to the game in England as an initial impetus to the "Plan for Table Tennis" over the next few years, which has been drawn up and submitted for Government financial sponsorship.

Within hours of the decision having been taken, Conrad Jaschke, selected by the Council for the onerous task of Honorary Organiser, had assembled a strong team charged with the various aspects of organisation under his general co-ordination and control. Full details are set out on the centre page.

No Effort Spared

A tremendous amount of work has already been accomplished, most of it in the preparation of plans which will unfold gradually during the months leading up to those exciting eight days in April next year. No effort will be spared to ensure the success of the event, and readers of this magazine will be kept up to date each month with activities and developments.

Confidence runs high amongst those intimately connected with the organisation. With the Championships still six months away over 20 Associations out of a possible 30 have indicated they will take

part. Offers of assistance before and during the event have been pouring in from all parts of the country. There has been an immediate demand for tickets, especially by Leagues wishing to arrange coach parties for Wembley. Ideas about presentation and publicity have been helpfully offered, and the demands for advertising material have exceeded expectation.

Encouraging as this is, there is no air of complacency, or a tendency to underestimate the task. The stark fact is that the cost of staging the Championships is estimated at £17,000. And in the last resort any deficit has to be met from the funds of the Association.

The National Council decided to accept the offer to organise the event on behalf of each affiliated member of the E.T.T.A. It asks each and every member to give his support in any and every way possible to publicise and popularise the Championships and, above all, to come to Wembley on the day.

Gradual Build Up

And to come to Wembley will be to come with hopes of English victories before the home crowd. There are the ladies' team event and doubles titles to be retained, and there are much better than outside chances that we can capture other titles, too. Convinced of the possibilities, the Senior Selection Committee has planned the entire season's programme as a gradual build-up towards the climax of the Championships in April, when our teams will be the fittest and best prepared of any to have represented the Association.

The E.T.T.A. is determined that the Fifth European Table Tennis Championships, the first to be staged in England, will be an event to be remembered not only for the competence of its organisation and presentation, not only for the success of English players before their own supporters, but also as the spring-board for a new era of advancement for the game of table tennis in England.

Senior Selection Committee Aims

By NORMAN REEVES (Chairman)

THE newly elected Senior Selection Committee took very little time to get down to the task of laying plans for the coming season. The main object is obvious: to bring the English players to peak form and fitness to retain and gain titles in the European Championships at Wembley in April, 1966. This in the short term: in the longer term sights are aimed at team building for the next World championships in 1967.

It is the intention to form two squads (seven men and five women) from which the teams to represent the Association at the European Championships will be selected. Already four men and three women have been chosen and the numbers will be completed at the end of October. As a guide to the selection of the other members of the squads, a Ranking Meeting was held at Stanmore on September 26 and the selectors will also be guided by results in all types of competitive play up to and including the Sussex Open at the end of October.

The task of the selected squads will be tough. None of the members will be entitled to assume that his or her place in the European teams is assured: merit alone will decide. The preparatory programme will be intense. Weekend training sessions are being arranged to take place at Bradford and Harlow and a number will be held at the Crystal Palace National Recreation Centre.

INTERNATIONAL PROGRAMME

A full season of participation in foreign Open Tournaments is also planned and a number of European teams will be brought here during the coming months for international matches, in order to give our players the practice they need. In short, no effort will be spared to bring our players to their peak form and fitness for the unique opportunity presented by the European Championships at Wembley next April.

During the season the results of those not included in the squads will be carefully watched by the selectors and the possibility of adding a consistently outstanding performer to the select few is not precluded. In particular, the Senior Selection Committee will be keeping an eye on the emergence of junior players to senior ability and status.

In addition, with sights aimed at the future, the Committee intends to seek closer co-operation with both the Junior Selection Committee and the Coaching and Schools Committee. It is with those two Committees that lie the future hopes of English table tennis in international competition.

The three Committees are well aware of the responsibility they carry: they are also aware of the challenge this responsibility poses: and they know the satisfaction the successful bearing of it can bring. Opportunity offers, perhaps as at no time in the past, scope for development of the great potential there is in the country to-day.

Last, but by no means least, a word to those who will undoubtedly be disappointed during the season through not being selected by feeling unfairly treated or in thinking that their claims have been overlooked. At all times it must be remembered that selectors are human beings and, as such, fallible. Their task is not easy. Always they will act with fairness and honesty: but also with courage in the belief that the interest of the Association is greater than that of the individual.

Above all, they seek the confidence and co-operation of players. The selectors invite and encourage players to discuss with them their aims, difficulties and disappointments, because it is only through understanding of one by the other that the aspirations of both will be achieved.

AN EXTRA TEAM FROM SUSSEX

THE 1965-66 season should be the most memorable for many years for Sussex, but it will also be the most expensive. Following promotion to the Premier Division of the County Championship a successful move was made at the annual meeting in July to launch a second senior team.

This brings the county sides up to three—there is also a junior side—and a hefty bill, which will be partly met by a two-shilling levy on all registered players in the county.

Most of the Sussex leagues had held their annual meetings prior to the passing of the increase, but at those league meetings which followed there were rumblings of discontent, which might well continue.

Peter Shead is unlikely to be available for the Premier Division, but it is expected that the side will include Judy Williams, England's No. 7, to back up Roger Chandler and other top players in an all-out effort to keep Sussex up.

PROMISING JUNIORS

Prospects for the junior side are good, with those two fine young players Terry Riley (Crawley) and Diane Gard (Eastbourne), who are expected to play in the junior international trials.

Lilian Rymill of Worthing, is proving a popular successor as county secretary to Charlie Wyles, who is now holding a similar position with Kent. County chairman Keith Watts is now serving on the E.T.T.A. national Council and Management Committee.

J.W.

Corti Woodcock Memorial Award

ESSEX break new ground with the choice of a player, Bobby Stevens, for the Corti Woodcock Memorial Award.



Bobby Stevens

Normally this is given for administrative services, but in exceptional cases it can be made to a player or an organisation within the county.

Stevens gets the award for his sterling work inside and outside the county as an ambassador for the furtherance of the game. Many know Stevens as an international and county player, and his outstanding ability as a captain, but there is another side. As his activities take him around the county he spreads the gospel of the game with an unselfish attitude of giving back to the game more than he receives. He is always ready to lend a helping hand. As a member of the Junior Affairs Committee he instills confidence in all juniors at all levels. This is reflected in the successes of the Essex Junior team, who have won the county championships for four consecutive seasons.

Former winners of the Award, first introduced in 1959 in memory of the county's former President, have been: Harry Walker, Frank Bateman, Sidney Goose, George Eagle, Ron Langner and Len Hoffman.

GIRLS SHOW THE WAY

by William Preston

BBRITAIN dominated the top table tennis placings at the 14th International Paraplegic Sports Meeting contested by 23 nations at Stoke Mandeville Hospital in July.

A specially erected marquee served as the venue for the table tennis and among the world class players seeking to retain titles they had won in Tokio last year were Hagag (Israel), the Paralympic gold medallist, and Rosy Kuhnel (Austria).

Britain won more events than any other nation. Full credit goes to the girls, especially to Daphne Legge Willis and Margory Cooper, who fought each other in the singles "C" class final and together won the doubles events.

Both these girls have received their initial training at the hospital and have made remarkable progress during this season.

Susan Masham reached the "B" class final only to lose in straight games to her old rival Rosy Kuhnel. However, she partnered Gwen Buck and retained the doubles title.

Tommy Taylor as usual played on top form to win the "A2" singles over Langer, of Germany, and also the doubles with Dubarry.

The "C" class men's singles produced the greatest shocks of all. The real tragedy came to Hagag who, owing to over-confidence, threw away his title to the keen Belgian, Stevens, who retrieved brilliantly in an excellent display of counter-hitting. Stevens then went on to gain the gold medal in the first-ever all-Belgian final.

George Monahan tried hard for a home success in the Class "B" singles but after wading through a large field of foreign opposition was stopped by the experienced Ferraris of Italy in the final.

Taylor won the men's "A2" singles and the "A" doubles with Dubarry, while Gibson and Major did well in reaching the final of the "C" doubles where Abeles and Hagag of Israel were just too good.

RESULTS

Men's A1 Singles. Stenberg (Norway) bt Jacobs (Netherlands). Men's A2 Singles. Taylor (G.B.) bt Langer (Germany). Men's A Doubles. Dubarry/Taylor (G.B.) bt Jacobs/Schumaker (Netherlands). Men's B Singles. Ferraris (Italy) bt Monahan (G.B.). Men's B Doubles. Ferraris/Zarilla (Italy) bt Ratazski/Tillard (France).

Continued in Col. 3

England Caught In Holiday Mood

by RON CRAYDEN

A MIXED table tennis international between England and West Germany was one of the featured attractions at the International Festival of Sport at the National Recreation Centre, Crystal Palace, in August.

Pre-match forecasts indicated a close contest with the odds slightly in favour of the home team, but England were caught in a holiday mood and crashed 2-6 to the match-tight Germans.

The opening encounter between Denis Neale and Martin Ness was perhaps the most exciting match but the dice were loaded against us. Halfway through, Neale slipped and aggravated an old knee injury which noticeably restricted his movements. Even so he struggled on gamely only to lose 21-23 in the third.

Chester Baraes played some scintillating shots in his singles but was eventually worn down and tamed by the great defensive skill of Eberhardt Scholer.

Brian Wright had patches of brilliance, but found the effective awkwardness of Micheiloff too much for him.

It was noticeable that all our players were lacking that sense of urgency that was a feature of their play in Ljubljana last April. Even our brilliant girls were playing from memory without that surety of touch and timing that we have come to expect from them. It was Mary Shannon, however, who halted our slide in the singles. Then she teamed with the illustrious Diane to take the ladies' doubles.

England lost to W. Germany 2-6: D. Neal (Yorks.) lost to M. Ness —20, 14, —21. B. Wright (Mid dx.) lost to H. Micheiloff —18, —18. C. Barnes (Essex) lost to E. Scholer 10, —9, —12. Miss D. Rowe (Mid dx.) lost to Miss E. Buchholz 20, —14, —19. Miss M. Shannon (Surrey) bt Miss R. Seidel 14, —19, 14. Wright/Barnes lost to Micheiloff/Ness 15, —14, —10. Miss Rowe/Miss Shannon bt Miss Buchholz/Miss Seidel 14, 17. Wright/Miss Shannon lost to Scholer/Miss Buchholz —21, 11, —13.

GIRLS SHOW THE WAY

Continued from Col. 1

Men's C Singles. Stevens (Belgium) bt De Zutter (Belgium). Men's C Doubles. Abeles/Hagag (Israel) bt Gibson/Major (G.B.).

Women's A Singles. Lyso (Norway) bt De Groot (Netherlands).

Women's B Singles. Kuhnel (Austria) bt Masham (G.B.). Women's B Doubles. Masham/Buck (G.B.) bt Kuhnel (Austria)/Martino (Italy).

Women's C Singles. Legge Willis (G.B.) bt Cooper (G.B.). Women's C Doubles. Cooper/Legge Willis (G.B.) bt Waterman/Broemmer (U.S.A.).

A MOVE — AND NEW VENTURE — FOR GEOFF HARROWER

GEOFF HARROWER has moved from Luton to Corby. He has had a new house built up there right on the edge of the woods and says that all friends will be welcome next Spring onwards, providing they bring their tools for digging, etc.!

He will, of course, be carrying on his sports results agency, and writing for the **Daily Telegraph**. In addition, he has taken a partnership in the Northants Press Agency.

His new address is: **13, Althorp Place, Corby, Northants**. Telephones Corby 3211 and 3212. Corby can be dialled on STD—code OKE 66, then 3211. An "Ansafone" machine has been installed on the 3211 line, which will take results of county matches and tournaments, if he happens to be out. A little tip, if you want to make sure of speaking to him, and not connected to the recording machine, then ring 3212.

Geoff told us the other day that he reckons the "Ansafone" machine is the answer to many of his problems, for it enables him to attend big matches and tournaments, and take his wife, Bobbie, with him, instead of her being glued to the 'phone waiting for results. The machine, by the way, **WILL** accept reverse charge calls!

A SUMMER'S REST

by IAN HARRISON

IT all happened because Richard Bergmann decided after about 15 years continuous travelling with the Harlem Globetrotters that he wanted, or rather needed, a few months rest this summer. I was invited to take his place and with French star Gerard Chergui I embarked on 13 furious weeks accompanying the Harlem Globetrotters on their summer tour of Europe and the Near East playing table tennis exhibitions.

CRAYDEN STEPS UP

RON CRAYDEN, England's non-playing captain, is the new President of the South London League. He was appointed to succeed Mr. E. A. W. Cast, who has retired, at the League's annual general meeting in August.

Few members have done more to put the League in the forefront of the



RON CRAYDEN

game than Crayden. He helped them in their successful run in the Wilmott Cup, gained Swaythling Cup honours for England in 1951, and represented Surrey County on nearly one hundred occasions.

Crayden's association with South London goes back 25 years, and his big interest these days is developing the sport among the schools and youth clubs.

Starting one cold and damp day towards the end of May and armed with my bat, about 400 (yes, 400) balls and Bergmann's special portable table tennis table I steamed away from England bound for Frankfurt, in Germany, where I was to meet up with the Harlem Globetrotters. The tour promised much, 13 weeks touring Europe and the Near East, a summer in the sun visiting such exotic sounding places as Athens, Salonica, Izmir, Beirut, Tel-Aviv, Barcelona and Rome to name but a few.

But alas, although there were a few bright spots such as exploring the canals of Venice or lazing beside a Riviera pool in boiling sunshine reading of England's wettest summer for years, it was not all fun—far from it.

IN BULL-RING

Visiting 14 countries in 13 weeks, travelling over 40,000 miles mostly by coach; nights crammed in buses; changing in cow-sheds, giving exhibitions in bull-rings, with mud up to the knees and the wind making the ball perform contortions; forcing oneself to leap about with a smile on the face and fever in the bowels, is certainly not my idea of fun.

In fact the life of a professional artist is a succession of hotel rooms, coaches, trams and planes; even flying becomes a bore with 15 different flights in one week in a series of one-night stands taking in Turkey, Greece, Israel, Cyprus and the Lebanon.

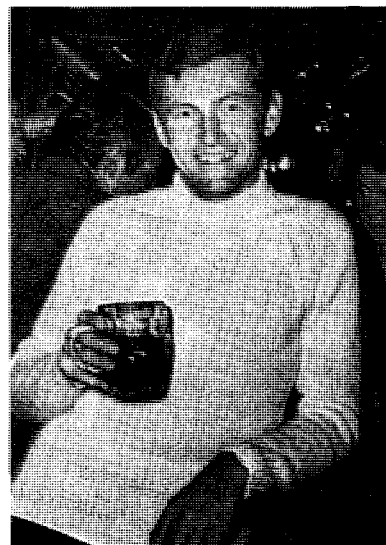
But now it's all over and gosh it's good to be back, even to dark, dusty and cold table tennis halls, with only memories and a fast fading sun-tan to remind me of my most hectic summer's rest.

CLUB BADGES

- Attractive Cloth Badges, made to your own design, in any quantity.
- Suitable for Blazers, Sweaters, etc.
- LOW PRICES AND QUICK DELIVERY.
- Free help offered in designing your badge.

Please write to:
S. A. CORY & COMPANY,
20 ST. JOHN'S HILL, LONDON, SW11

"It's Good To Be Back"



IAN HARRISON

Picture by Michael Maclaren

ZONING STAYS

THE old problem of zoning or not zoning reared its annual head for the twenty-third season of the Midland League. Both sides can see the other's point of view, but the travelling distance and time between such towns as Gloucester and Nottingham, or Cheltenham and Derby, once again proved the deciding point. Central towns like Birmingham, West Bromwich and Wall-sall would have no trouble being at the hub of the league, but even they appreciated the problem of distant leagues.

Last season saw Oxford come into the league and prove they were an asset. This season Cheadle (Staffordshire), one of the smallest of town leagues, enter for the first time. During the years no fewer than 24 towns have participated, 16 of them still taking part. Temporarily (we hope) by the wayside are Shrewsbury and Evesham (founder members), Craven Arms, Stourbridge, Northampton, Burton, Hereford, and Kidderminster, while South Staffs once represented West Bromwich, Wolverhampton and Shrewsbury for one season.

For 1965-66 there is a full programme and it is most encouraging to see 14 junior teams and 24 men's teams. More surprising is the 16 veterans teams, some of the players having been playing in this since the league's inception in 1936. Intermediates have 10 teams and the ladies—the only section not zoned—have 7 teams.

Mainly through grading difficulties and to help with travelling teams have been reduced from four to three players, over a test of nine singles and a doubles.

A. A. Wall.

EAST OF ENGLAND OPEN

Juniors Set the Pace

THE growing strength of the junior challenge, particularly where the girls are concerned, was fully emphasised in the East of England Open, at Skegness on September 18-19 (writes Laurie Landry). They collected two senior titles in this first big meeting of the new season, and provided runners-up in two more. Moreover, five out of the last eight in the women's singles were juniors.

Pride of place goes to Maureen Heppell, of Northumberland, the No. 3 ranking junior, who exceeded all expectations by winning the women's singles, beating Pauline Martin in the final. She had already disposed of Judy Williams in the semi-final and prior to that Pauline Hemmings, the No. 1 junior, who had provided her spot of giant-killing by beating Irene Ogus, the No. 1 seed.

Linda Henwood kept up the good work by beating Cynthia Duncombe, the No. 2 seed.

Miss Hemmings had her share of the honours by partnering Linda Henwood to win the women's doubles. She was also runner-up in the mixed doubles with Laurie Landry.

Both Miss Heppell and Miss Hemmings are repeating the benefit of their experience in the European Junior championships back in the summer.

While the boys did not have any titles to show for their senior efforts, Brian Burn, of Northumberland, had

the distinction of beating two leading men in Derek Schofield and Stan Jacobson, the new Maccabi champion, before losing to Tony Piddock, the ultimate winner. Alan Hydes was another junior in the quarter-finals. He also reached the men's doubles final with Landry.

Piddock played as well as he has ever done to stop the victory run of Les Haslam and win the men's singles. Haslam had not lost a game until the final and he looked like continuing this way when he took the opening game comfortably. Suddenly Piddock took hold of the match and cleverly picked his shots to hit down Haslam's backhand and win 15-21, 21-11, 21-18.

Piddock has been a nationally ranked player for so many years that it is surprising to find this is only his second open tournament win.

Mike Symonds, the top seed was

Continued on Page 26

Men's Singles: Semi-Finals: A. PIDDOCK (Kent) bt C. Warren (Surrey) —15, 22, 15. L. HASLAM (Middx.) bt R. Stevens (Essex) 15, 18. **Final:** PIDDOCK bt Haslam —15, 11, 18.

Women's Singles: Semi-Finals: M. HEPPELL (Northumberland) bt J. Williams (Sussex) 19, —18, 19. P. MARTIN (Kent) bt E. Carrington (Essex) 7, —18, 12. **Final:** HEPPELL bt Martin 20, —13, 18.

Men's Doubles: Semi-Finals: R. HAMPSON/M. JOHNS (Cheshire) bt S. Jacobson/A. Lindsay (Middlesex) 14, 12. L. LANDRY (Middx.)/A. HYDES (Yorkshire) bt J. Clarke (Lancashire)/Stevens —13, 14, 17. **Final:** HAMPSON/JOHNS bt Landry Hydes 12, —10, 17.

Women's Doubles: Semi-Finals: L. HENWOOD (Essex)/P. HEMMINGS (Hertfordshire) bt I. Sykes (Warwickshire)/P. Bodrog (Yorkshire) 22, 21. B. SAYER/G. SAYER (Essex) bt C. Duncombe/L. Proudlock (Yorks.) —17, 10, 17. **Final:** HENWOOD/HEMMINGS bt Sayer/Sayer —18, 11, 14.

Mixed Doubles: Semi-finals: STEVENS/Miss B. SAYER bt Hydes/Miss Heppell 19, 17. LANDRY/Miss HEMMINGS bt B. Burn (Northumberland)/Miss K. Smith (Middlesex) —20, 11, 14. **Final:** STEVENS/SAYER bt Landry/Hemmings 16, 19.

Boys' Singles: Semi-Finals: HYDES bt Burn 19, 15. K. LAWRENCE (Essex) bt S. Williams (Lancashire) 18, —20, 13. **Final:** HYDES bt Lawrence 20, 16.

Girls' Singles: Semi-Finals: HENWOOD bt D. Simpson (Essex) 10, 15. HEPPELL bt Hemmings —18, 10, 12. **Final:** HENWOOD bt Heppell 20, 17.

AMBITIOUS WILTS

by Don Hillier

THE staging of the County Champions versus The Rest of England Match at Swindon was a prelude to the most ambitious programme ever planned by the Wiltshire Executive Committee for the current season.

The Premier Division next season is the No. 1 objective and so as to gain ample pre-competitive match experience friendlies have been played against the National RAF Team and Oxfordshire.

County history was made in the 6-4 win over the RAF when for the first time ever a father and son combination in Tony Wolff (Snr.) and Tony (Jnr.) — from Swindon — appeared for the Moonrakers.

Friendly matches are being arranged against Essex (Senior and Junior), Bucks and Berks, prior to the first Division Two (West) Match at Swindon on November 20 when Cornwall provide the opposition.

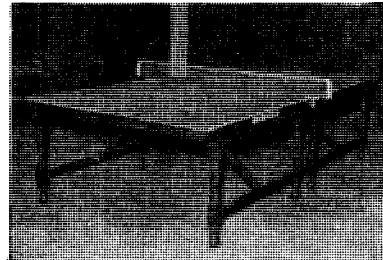
A full coaching programme has been arranged by Wiltshire's new coaching Secretary Ernie Howell while County Umpires Secretary Arthur Catchpole aims to double the present total of County Umpires by the end of the season.

The County League again consists of four divisions with Devizes (2), Salisbury (4), Swindon (3), Warminster (1) and West Wilts (4) entering a total of 14 teams.

Dick Clode, Wilts Men's Singles Champion for the past three years, and Margaret Henderson, former Somerset League player, were married at Bath on September 18.

Laurie Landry and Mrs. Mary Symes (née Stafford) have both completed 100 appearances for Willesden League.

The FAMOUS "BROMFIELD" CHAMPIONSHIP TABLES Used in 50% of all International Matches in England during 1954/58



Three Superb Models (all 1")

★ DE LUXE £49 ★ STANDARD £47

★ SERVICE £40

Write for lists

BROMFIELD (SPORTS) LTD.

27 BUCKINGHAM ROAD, SHOREHAM-BY-SEA,
SUSSEX, ENGLAND

Telephone: Shoreham-by-Sea 4355/6

EUROPEAN JUNIOR CHAMPIONSHIPS

by LAURIE LANDRY

Experience But No Glory

FOR the first time an official England team took part in the European Junior Championships in Prague on July 12-15. We did not cover ourselves in glory, but the experience of having taken part should benefit the players considerably.

The team consisted of Stuart Gibbs, Alan Hydes, Mike Johns, Pauline Hemmings and Maureen Heppell, plus Jim Langan of Ireland.

BOYS' SINGLES

Stuart Gibbs bt Woznica (Poland) 15, 17; lost to Klevisar (Yugoslavia) —21, —13.

Alan Hydes bt M. Pedersen (Denmark) 19, —19, 14; lost to Cordas (Yugoslavia) —23, —17.

Mike Johns bt Pohoralek (Austria) 19, 13; lost to Dvorak (Czechoslovakia) —16, —9.

Jim Langan (Ireland) bt Emanulov (Bulgaria) 15, —10, 19; bt Remes (Czechoslovakia) 16, 18; lost to Klevisar (Yugoslavia) 19, —4, —8.

Semi-Finals: Vardanian (U.S.S.R.) bt Frog (U.S.S.R.) 23, 19; Sarkhajan (U.S.S.R.) bt Juhos (Hungary) 9, 13. Final: **VARDANIAN** bt Sarkhajan 13, 10.

GIRLS' SINGLES

Pauline Hemmings bt H. Pauknerova (Czechoslovakia) 17, —14, 18; bt Czech (East Germany) 14, 19; bt Anisimova (U.S.S.R.) 15, 14; lost to Rundstrom (Sweden) —16, 16, —13.

Maureen Heppell bt Van Buylaere (Belgium) 8, 16; lost to Balajsite (U.S.S.R.) —16, —16.

Semi-Finals: Johansson (Sweden) bt Balajsite (U.S.S.R.) 18, —17, 19; Rundstrom (Sweden) bt Hemmings (England) 16, —16, 13. Final: **JOHANSSON** bt Rundstrom 15, 16.

BOYS' DOUBLES

Gibbs/Langan bt Orlovski/Suchopar (Czechoslovakia) 7, 15; lost to Sarkhajan/Frog (U.S.S.R.) —14, 21, —13.

Hydes/Johns lost to Kocher (W. Germany)/Hrdina (Czechoslovakia) 19, —22, —14.

Semi-Finals: Vardanian / Gomozkov (U.S.S.R.) bt Szallinger/Juhos (Hungary) 15, 18; Cordas/Klevisar (Yugoslavia) bt Person/Linder (Sweden) 17, —16, 17. Final: **VARDANIAN/GOMOZKOV** bt Klevisar 18, 15.

GIRLS' DOUBLES

Heppell/Hemmings bt Christensen/Stendal (Denmark) 10, 12; lost to Balajsite/Anisimova (U.S.S.R.) —10, —17.

Semi-Finals: Rundstrom / Johansson (Sweden) bt Golubkova/Pogosova (U.S.S.R.) —16, 10, 14; Balajsite/Anisimova (U.S.S.R.) bt Czech/Nylhof (E. Germany) 16, 9. Final: **RUNDSTROM / JOHANSSON** bt Balajsite/Anisimova 15, —18, 13.

MIXED DOUBLES

Gibbs/Heppell lost to Sarkhajan/Pogosova (U.S.S.R.) —10, —13.

Johns/Hemmings bt Prikryl/Sandoryova (Czechoslovakia) 17, 9; lost to Gomozkov/Anisimova (U.S.S.R. No. 1 seeds) 13, —9, —13.

Semi-Finals: Persson/Johansson (Sweden) bt Gomozkov/Anisimova (U.S.S.R.) 13, 11; Dvorak/J. Panknerova (Czechoslovakia) bt Vardanian/Balajsite (U.S.S.R.) —17, 13, 13. Final: **PERSSON/JOHANSSON** bt Dvorak/Panknerova 24, 16.

Miss Hemmings was the most successful of the team, reaching the semi-final of the girls' singles before going down to Lena Rundstrom, of Sweden, 16-21, 21-16, 13-21. She put up a great show but could not keep pace with the Swede, who pulled out some wonderful shots in the final game.

Miss Hemmings made hard work of her opening match against Pauknerova, of Czechoslovakia, winning at 18 in the third, but followed with one of the upsets of the championships.

SWEET REVENGE

Playing more relaxed and making few mistakes she beat the No. 2 seed Ulla Czech of East Germany 14 and 19. This was sweet revenge for her defeat by the same girl in the team event.

Pauline followed this with a win over the Soviet No. 2, Anisimova, standing her ground and half volleying extremely well against the all-out hitting of the Russian.

Maureen Heppell, after an easy win over Van Buylaere, of Belgium, fell to the No. 1 seed, Balajsite, of U.S.S.R. She put up a creditable performance, scoring 16 in each game.

The three English boys, having received first round byes and won second round matches, all lost in the third round. Ireland's Jim Langan went one round further before falling to Klevisar, of Yugoslavia. After winning the first game it was obvious that Langan was not prepared to move enough and he lost the next two at 4 and 8.

It was Klevisar who stopped Gibbs, who put up a rather dis-

appointing display, being apparently too keen to try the loop when his opponent rarely chopped the ball.

Hydes beat Pedersen, the best of the Danes, in a terrific match, getting through on his harder hitting. He then lost to Cordas, the Yugoslav No. 1, after a very good game. He tried to slow his opponent with counter-hitting the fast shots and was to some extent successful, but Cordas won through at 25-23, 21-17.

Faced with the Czechoslovak Swaythling Cup player Dvorak, Johns was not quite good enough and went down 16 and 9.

Hydes and Johns lost in the first round of the boys' doubles to Kocher (W. Germany) and Hrdina (Czech.) 19, —22, —14, after holding a match point, which they lost on an edge ball. Gibbs and Langan beat the Czechs Orlovski and Suchopar, then lost to the Soviet second pair, Sarkhagan and Frog, after just taking the second game. They did not look the pair that had won the English junior title.

In the girls' doubles Miss Heppell and Miss Hemmings reached the quarter-finals where they lost —10, —17 to the Russians Balajsite and Anisimova. In contrast to their earlier win over Danes, Christensen and Stendal, the British girls never combined completely.

The mixed doubles saw the early elimination of Gibbs and Miss Heppell and Johns and Miss Hemmings.

RUSSIA DOMINATE

Russia dominated the boys' singles, providing three of the four semi-finalists, the odd one out being Juhos of Hungary, who lost to Sarkhajan. Vardanian, a member of his country's world championships team, then beat Sarkhajan 13 and 10 in the final and later collected a second title in the boys' doubles with Gomozkov.

With such domination of the individual events it was not surprising that U.S.S.R. should also have won the boys' team event. They went through their group without loss of a game, dropped three to Yugoslavia in the semi-final, then beat Czechoslovakia 5-0 in the final.

England's team lost to both Sweden and East Germany in their group. Their lone success was against Poland. The East Germany match was a disappointment for we led 4-2

TEAM EVENTS

Boys: England lost to Sweden 3-5; lost to E. Germany 4-5; bt Poland 5-1.

Semi-Finals: U.S.S.R. bt Yugoslavia 5-3; Czechoslovakia bt Sweden 5-4. Final: U.S.S.R. bt Czechoslovakia 5-0.

Girls: England lost to Czechoslovakia 2-3; lost to E. Germany 1-3; bt Denmark 3-0.

Semi-Finals: Sweden bt E. Germany 3-2; W. Germany bt U.S.S.R. 3-2. Final: Sweden bt W. Germany 3-0.

and looked well on the way to victory when Gibbs led Lehmann 17-10 in the third.

He lost his concentration and the next ten points, pulled back to 20-11 then lost the next two points.

In the deciding rubber Hydes, who had won his two previous matches, lost —15, —19 to Rane, who had lost his other matches. It was a clash of style, and Hydes was unable to hit through his defensive opponent.

While Russia dominated the boys, Sweden came out top among the girls, winning the singles, doubles, team and, for good measure, the mixed doubles.

Eva Johansson won a superbly exciting semi-final at 19 in the third against Balajsite, the Russian top seed, then went on to surprisingly beat her country's women's champion Lena Rundstrom in the final. These two combined to win the doubles and Miss Johansson gained the triple crown in the mixed with Bo Persson.

In winning the team event the Swedish girls dropped two rubbers, both to East Germany, in the semi-final. Here Johansson was beaten by Czech, and also lost the doubles with Rundstrom to Czech and Nylhof.

England lost to both East Germany and Czechoslovakia in the team event, where their only success was against Denmark.

KENT'S NEW RECRUIT

A NEW recruit to the Kent County team this season is Pauline Martin, formerly of Essex. She is crossing the border to be one of the first to take advantage of the easing of the qualifying rules.

Miss Martin is no stranger to Kent for she has played in the Woolwich League for a number of years and is in fact the Kent Closed champion.

Behind the move is a bid to achieve Premier Division play, which is denied her in Essex, where Lesley Bell is first choice.

In her new county Miss Martin will face rivalry from Joyce Ellis, Joan Beadle and Betty Bird, but youth is on her side.

With three teams in the county championships—two senior plus a junior—Kent have a full programme ahead. They expect the Premier Division team to be stronger than last season.

Returned from Sussex, Charles Wyles has slipped back into the county administration as county secretary, organiser of the Kent Open at Folkestone on January 29-30 and the Closed, which break new ground at Crystal Palace in April.

Jimmy Mannooch, that great stalwart of Kent, will once again be responsible for the Kent Junior Open at Folkestone on November 6-7, and the Junior Closed.

The County is again proceeding with the popular *Kent Messenger* Tournament, with a finals day at Maidstone in April.



PAULINE MARTIN

A full programme of coaching, both at schools level and extensive training has been arranged under the secretaryship of Jennifer Walton, an Ashford schoolteacher, who will also organise the annual Schools Championships which promises record entries.

WIN THIS SEASON...with ALEC BROOK EQUIPMENT

SHIRTS

Unbeatable in value and quality. Adopted by many leagues. Alec Brook 'Stag' shirt in nine colours.
Price **17s. 6d.** each.

TABLES

ADB Spalding Tournament 1" nom.	£43 19 6
Jaques Tournament	£50 0 0
Jaques Cavendish 1" nom.	£40 0 0
½" Match	£27 10 0

RUBBER

Best Jap Sandwich. Rev. or normal **8s.** piece. Normal rubber; fast, medium or slow **1s. 3d.** piece. Special Glue **2s.** tube.

NETS/POSTS

A new type — the finest ever, complete **45s.**
(Available October).

TIES

You can have a Terylene tie with your own club printed motif—minimum number six. **15s. each.**

STAMPS

A few sets only — 12 Peking World Champs. 1959
Special T.T. stamps **20s.** set.

BATS — Complete range — Barnes—Harrison—Cor du Buy—Barna

TRACK SUITS — Nylon, Hellanca, etc.

BAT COVERS — HOLDALLS — BADGES.

Please add postage. Write for list

ALEC BROOK

(SPORTS EQUIPMENT)
LTD.

124 EUSTON ROAD,
LONDON, N.W.1
EUSTON 3772/3/4

Congratulations

from the Staff and Management of
JOHN JAQUES & SON LTD.

on the occasion of the marriage of

Miss MARY SHANNON

to

Mr. BRIAN D. WRIGHT

on 4th September, 1965 at Sutton, Surrey.

derek holden ltd

Mary and Brian Wright selecting for their new home

★ **FABRICS** by

HEALS & SANDERSONS

★ **FURNITURE** by

**PARKER KNOLL
 GUY ROGERS
 MERIDEWS
 SHAWS of ENGLAND
 and other leading firms**

★ **CARPETS** from all leading makes

**TEMPLETONS
 CROSSLEY
 BOND-WORTH
 HUGH McKAY**

**131 The Broadway,
 Mill Hill, London, N.W.7**

TELEPHONE: MILI HIII 3196



Photograph by Michael Maclaren

Now Mr. & Mrs.

by KEN MATTHEWS

SATURDAY, September 4th marked a great day in the lives of two players who we have all come to know very well through the columns of this magazine and the National Press, if not personally. **MARY SHANNON** and **BRIAN WRIGHT** were married that day at St. Phillip's Church, Worcester Park, Surrey.

The day before will be remembered because it rained cats and dogs from morning until night. However, there was none left to fall on the Saturday and the marriage took place at midday in bright sunshine. There were three bridesmaids, the chief of whom was **ALMA TAFT**. **ALAN RHODES** was best man and it was to his credit that the whole proceedings went off very smoothly.

About 100 guests attended the wedding and afterwards everyone went to the Woodstock Hotel, Morden, for the reception. After a very good dinner, speeches were made by the bride's father, the groom and the best man.

After expressing his thanks to all those who have helped Mary and Brian in their careers, particularly Harry Venner and Ron Crayden, Mr. Shannon wished Mary and Brian all the very best for the future.

Brian in turn thanked everyone for their attendance and best wishes and said he and Mary would always be delighted to welcome their friends to their new home at Mitcham.

The best man expressed his relief that everything seemed to have gone well.

Telegrams were received from many well-wishers among whom the E.T.T.A., and Di Rowe and Ebby Scholer were prominent.

The couple left from Mary's home at about 6.15 to a rousing send-off from the whole party. Their honeymoon was to be spent in Italy. They went off alone having refused my offer to go along as non-playing Captain!



Above: Mary and Brian pause at the Church steps.



Left: Table tennis personalities among the guests. (L to r) Connie Warren, Ken and Pat Baker, Terry Densham, Brian and Mary Wright, Dave Lowe, Laurie Landry, Harry Venner, Jean and Jackie Head, Alma Taft, Alan Rhodes, Janet and Tony Cornell.

ENGLAND v CZECHOSLOVAKIA

A Good Start By Mary and Di

DIANE ROWE and Mary Shannon, who have for so long carried England's prestige on their strong shoulders, are determined to stay at the top in Europe. This was evident by the way they beat Czechoslovakia at the National Recreation Centre, Crystal Palace, on August 30.

DOUBLE DEFEAT FOR JOHANSSON ... BUT SWEDEN WIN

KJELL JOHANSSON, the European champion, will not wish to be reminded of Sweden's international with England at the National Recreation Centre, Crystal Palace, on August 30. Sweden won handsomely 6-3, but two of their losses were sustained by Johansson.

Obviously searching for his form in this out-of-season match, Johansson lost in straight games to Chester Barnes, and over three to Denis Neale. And between these two encounters he beat Ian Harrison . . . but only after losing the first games.

Close to the table, attacking play by both Barnes and Neale had the tall Swede scratching for his returns, and he never produced the type of play which had made him Europe's No. 1.

EXTRA TIME

Harrison, who relied on a longer range defence, gave Johansson the little extra time in which to make his shots, and this was the deciding factor.

Barnes showed exceptionally fine form, hitting crisply and accurately. He followed up his win over Johansson by beating Karl Bernhardt 21-14, 21-19, and looked all set for an unbroken run until he came up against Hans Alser and was cut down to size, losing 9-21, 13-21.

The crew-cut Swede carried the attack from the start, giving nothing away. He gave a first class display and this win over Barnes not only gave Sweden the winning margin but left Alser as the only player to go through the match without loss of a game.

It was a less happy story for Ian Harrison who found himself tossed into international fray at a moment's notice and after a summer of exhibitions throughout the Continent. He never attuned himself to the requirements. So it was not surprising that he failed to register a win, although his clashes with Bernhardt and Johansson both went to three.

England lost to Sweden 3-6; D. Neale (Yorks.) lost to K. Bernhardt —17, 17, —11; lost to Alser —16, —8; bt K. Johansson —12, 16, 15.

I. Harrison (Glos.) lost to Alser —12, —11; lost to Johansson —11, 14, —11; lost to Bernhardt 21, —14, —17.

C. Barnes (Essex) bt Johansson 14, 19; bt Bernhardt 14, 19; lost to Alser —9, —13.

While the men were sliding to defeat against Sweden on the adjoining table Mary and Di swept through to a 4-1 win. But it was not quite so clear as the scores suggest.

The Czechs, Marta Luzova, holder of the English Open singles, and Jitka Karlikova, came within a stroke of providing a major upset in the doubles. They held match point at 21-19, 21-20, only for Miss Shannon to save the day with a shot that just snicked the edge of the table.

It was too close for comfort, but far from being disturbed Miss Rowe and Miss Shannon tightened their game and the Czechs were never given another chance.

Had the Czechs secured the doubles it would have given them a 2-1 lead for Miss Luzova had brought her country level by beating Miss Rowe 15-21, 21-6, 21-13. There was a shattering reversal of form here for Miss Rowe won the first game comfortably only to wilt under a hurricane of hitting, which swept Miss Luzova to a 13-2 lead. And from that stage she was the complete master.

The quicker hit of Miss Shannon never gave Miss Luzova a chance to repeat this form in their singles clash and it was all over quickly with a score of 21-15, 21-16.

Miss Karlikova, who came close to taking a set from Miss Shannon before losing the opening rubber 12-21, 21-23, was no match for Miss Rowe and was easily beaten 21-19, 21-9.

England bt Czechoslovakia 4-1; M. Shannon bt J. Karlikova 12, 21; bt M. Luzova 15, 16. D. Rowe lost to Luzova 15, —6, —13; bt Karlikova 19, 9.
Shannon/Rowe bt Karlikova/Luzova —19, 21, 14.



MARTA LUZOVA

ESSEX LOSSES

RIDING the crest of the wave as county champions, Essex face the new season with optimism. All the first team are fit although Bobby Stevens is recovering from breaks to fingers on both hands.

Stuart Gibbs and David Brown, who helped the juniors to their fourth county championships title, are now seniors, while Karenza Smith has broken her association to join Middlesex. This leaves Keith Lawrence, Linda Henwood and Diane Simpson from last year's team.

More losses for Essex are Pauline Martin to Kent and Bob and Jean McCree to Bedfordshire.

Reports from the various leagues in the county show further increases in membership. Seven leagues have new general secretaries, while there are also changes at county level.

Harry Sprages is now vice-chairman and Vic Ralls takes over as match secretary for senior matches. Pending a successor to George Wenham as Junior secretary, Harry Walker is attending to these matters in addition to being general secretary.

There will be a "New Look" about the county teams. They will turn out in red shirts and blue shorts/skirts. It was felt that too many counties were wearing the traditional blue shirt and that a change would be better for presentation.

The Essex Open will be at the Harlow Sportcentre on January 15-16, the same weekend as the Lancashire Open.

Entries for the Team Knock-out competition show an increase of 13 with 46 teams.

Harry Walker.

SUSPENDED

ERWIN KLEIN, a former world mixed doubles champion, has been suspended indefinitely by the United States T.T.A.

It is understood that some English players have been invited by Klein to tour the U.S.A. this season, but in view of his suspension they would be advised to contact the E.T.T.A. before accepting.

FIFTH EUROPEAN CHAMPIONSHIPS

Wembley, 13th – 20th April, 1966

ORGANISATION CHART



HON. ORGANISER
(C. JASCHKE)

ADMINISTRATION & PUBLICITY

NORMAN REEVE Chairman

ALMA REEVE Secretary

George Yates
(Northern Publicity)

Harry Walker, Edgar and Jean Reay
(Sales and Information)

Tony Wickens
(Printing and Publications)

Laurie Landry
(Promotion at Tournaments)

Provide typing and duplicating facilities and act as the Secretariat from now till start of the championships. Liaise with Wembley Secretariat, G.P.O., Bank, B.R., L.T.B., British Travel & Holidays Assoc. Invite V.I.P.s and guests. Arrange Civic Reception. All literature and publications (except programme). Press, P.R., Publicity. Liaise with sponsors and their advertising agents. Liaise with Finance Committee re ticket sales promotion. Information and Sales Kiosk at Wembley.

FINANCE & BOX OFFICE

TOM BLUNN Chairman
DON MITCHELL Secretary
Financial planning, all payments, entry fees. Box office including advance ticket sales. Daily takings.

HOSPITALITY, WELFARE & TRANSPORT

JACK CARRINGTON Chairman
ELSIE CARRINGTON Secretary
Norman Cook
(In charge of meal arrangements)
Walter Mitton
(In charge of transport arrangements)
Frances Jarvis
(In charge of welfare arrangements)
Joan Williamson
(Personal assistant to Jack Carrington)

Meet all foreign players and officials at airport/station, and return them there. Book hotels, meals outside Wembley. First aid, welfare. Transport to and from hall/hotels. Arrange tour on free day. Arrange dinner-dance at end of the championships. Liaise with International Contacts Committee. Meal tickets.

INTERNATIONAL CONTACTS

BILL VINT Chairman
PETER LOWEN Secretary

Leslie Woollard
(Programme Editor)

Keith Watts and Charles Wyles
(Special assistants)

Correspond with countries abroad. Printed programme/souvenir book. Committee responsible for liaison with Hospitality Committee. Interpreters and Translators.

SECRETARIAT AT WEMBLEY

IVOR EYLES Chairman

MAURICE GOLDSTEIN Secretary

Margaret Fry
(Liaison assistant to Ivor Eyles)

Typing Pool and duplicating at Wembley. Production daily results supplements. Arrange typists and stenographers, including foreign language typists. Trophies.

T.V. & SPONSORSHIP

PETER LOWEN Chairman
Arrange motif design. Arrange special letterheads. Obtain sponsorship. Arrange T.V. Arrange V.I.P. to present trophies. Arrange official badges, clothing for officials, outfits for English players. Inform H.M. The Queen. Seek grant for secretarial work of championships from Ministry of Education.

EUROPEAN CONGRESS COMMITTEE

Hire hall and arrange simultaneous translation system. Provide meals for Congress. Organise Congress under direction of the International Contacts Committee.

SPECIAL APPOINTMENTS

(None of these will be members of the Main Championships Committee. The first will report direct to the Hon. Treasurer, and the other two to the Hon. Organiser):

GUARANTEE FUND ORGANISER: Tom Blunn and Conrad Jaschke have decided to appoint Brian Hartley a co-ordinator for this activity.

FINANCIAL ADVISER TO THE HON. ORGANISER: BRIAN HARTLEY.

PERSONAL ASSISTANT TO THE HON. ORGANISER: ALBERT SHIPLEY.

REFEREES COMMITTEE

GEORGE WHITE Chairman
(Hon. Referee)

JOHN WRIGHT Secretary

Stuart Dane, Percy Hyde, Frank Milligan, Geoff Owen, Harold Pearce
(Duties to be decided by the Hon. Referee)

Responsible for Draw and all matters concerning play. Liaise with Hon. Organiser and chosen manufacturers re equipment. Hon. Referee and Hon. Organiser to organise Opening Ceremony and share responsibility for general presentation.

STEWARDS & UMPIRES

COLIN CLEMETT Chairman
(Deputy Referee)

IRIS MOSS Secretary

Deal with all volunteers. Form pool of helpers on which other committees can call. Issue official passes. Arrange internal telephone system. Provide specified stewards for liaison with foreign officials and captains. Provide specified players' stewards and take responsibility for dressing room accommodation.

PROCEDURE :

The **MAIN CHAMPIONSHIPS COMMITTEE** will consist of the nine Committee Chairmen and the Hon. Organiser, who will be the convener of meetings. Ivor Eyles will be Chairman of the Committee. Tom Blunn will be Hon. Treasurer of the Championships, and the Hon. Organiser will be bound by the budgets agreed with the Hon. Treasurer for each of the nine Committees. The Main Championships Committee empowers the Hon. Organiser to act on its behalf, but not to alter its decisions.

Each Committee will give a written monthly report, not later than the 3rd of the following month. **HOSPITALITY** will report to **FINANCE**, **WEMBLEY SECRETARIAT** to **ADMINISTRATION**, **EUROPEAN CONGRESS** to **INTERNATIONAL CONTACTS**, with a copy to the Hon. Organiser in each case. The other six committees will report direct to the Hon. Organiser. **FINANCE**, **ADMINISTRATION** and **INTERNATIONAL CONTACTS** will be responsible

to the Hon. Organiser for the performance of the respective Committees which report to them.

The Hon. Organiser will have overall responsibility for the Championships within this structure. If he feels that the action of any Committee is endangering the success of the Championships by failing to carry out its duties, the Hon. Organiser must convene a meeting of the Main Championships Committee, who alone can replace Committee chairmen. Other

Committee Members can be replaced by agreement between the Hon. Organiser and the Committee Chairman concerned.

The Main Championships Committee shall meet at least once every month, and the Hon. Organiser shall give members at least seven days' notice of meeting. In between meetings of the Main Championships Committee the Hon. Organiser shall convene such meetings between Chairmen / Members of individual Committees as may be necessary.

JACK CARRINGTON'S NOTEBOOK

A Drive To Perfection

IT is widely recognised nowadays that intelligent coaching activities are helping to produce a healthy flow of new recruits to Table Tennis. This is necessary, not merely to "sell" the virtues of our sport, but to compete with the many other organised campaigns aimed at winning the enthusiasms of youth to their side.

We are now finding that positive activities of coaching or related inspirational work, must continue and be progressive, if enthusiasm is to be maintained long after the "re-cruit" stage.

In other words we must also stimulate a healthy interest in improvement, at all levels. However good you are, you could be better; however much you know, you could know more.

A counsel of perfection? Of course.

We make no apologies for trying to instil a "Drive to Perfection" in

all our coaching students; coupled with that other vital factor, an Open Mind, this makes them useful and interesting people with a service to give to young people which goes further than simply showing them how to play. We aim to show them also how the skills of play and organisation of sport, and how to enjoy each other's sporting company.

In addition to these worthy abstract aims, we have to conduct a very practical liaison campaign with our league and county organisers, educationalists, and community officials, to ensure that interest on the part of instructors and pupils is converted into action, equipment and facilities.

In the press of competitive, cut-throat match activities, news of this co-operative side of the sport often becomes swamped and does not reach those who could benefit or

would like to help. May this be my excuse if I use the start of the season to draw attention to our proposed programmes, and to invite enquiries from those who would like more detailed information.

Enquiries to: **E.T.T.A. Director of Coaching, 24, Worcester Gardens, Ilford, Essex.**

REGISTER OF COACHES

All County Coaching Officials should now have received the revised edition of the Register as at September 15th, 1965, showing Diploma Coaches, Theory Coaches, and Student Coaches in their area.

About 100 Students register each year; about 70 become qualified.

GENERAL PROGRAMME OF EVENTS:

The following dates will serve as a framework for many other meetings and practical sessions. The Director will be pleased to hear from organisers or students who contemplate arranging events which could be fitted into the general pattern of the itineraries mentioned.

For fuller details of sessions at Harlow and Bradford, please read the special information about "E.T.T.A. TRAINING CENTRES."

1965		
Oct.	3	Bradford
	4	Yorkshire Education Authority.
	5	Trent College (Teachers).
	10	Harlow.
	12	Trent College.
	16	Chesterfield (Youth Service).
	17	Bradford
	18	Stoke-on-Trent.
	19	Trent College.
	22	Suffolk E.C. (Schools).
	23-24	Yarmouth Rally.
	26-27-28	Somerset area (Schools and Youth).
	29	Exmouth (Schools and Youth).
	31	Harlow (Special Leagues' Day).
Nov.	1-2-3	Midlands.
	6	Nottingham (Coaches Study—Practical).
	9	Trent College.
	14	Bradford (Special Leagues' Day).
	14	Harlow.
	16	Bracknell.
	17-18	Leicester Area (Youth Leaders).
	19	Newcastle (Coaches Study).
	20	Newcastle (Youth Coaching).
	21	Newcastle (Under-16 Inter-County Meeting).
	22-23-24	N.E. and N.W.
	23	Bracknell (Youth Coaching).
	28	Harlow.
Dec.	7	Trent College (Teachers).
	12	Bradford (Under-16 Inter-County Meeting).
	19	Harlow (Leagues' Day).
1966 (Key dates)		
Jan.	4	Crystal Palace (Schools Coaching).
Feb.	6	Harlow (Under-16 Inter-County Meeting).
Mar.	19	Staffordshire (Youth Coaching).
	20	Staffs. (Under-16 Inter-County Meeting).

UNDER-16 DEVELOPMENT

MEETINGS (Teams of 15 boys and 5 girls).

These are designed (a) to offer a taste

SPECIAL EXPERIMENTAL GROUPS (Juniors)

IN discussion with the Selectors, concern was expressed that we are not feeding up to them any "penholder" players, nor even developing any to challenge our existing stars (writes Jack Carrington). After all, players of this style have walked away with almost every world title for 10 years or more now.

Frankly, I see little chance of "converting" a ready-made player of enough talent to prove any point in the debate. This is because talented and successful players are not mentally prepared to sacrifice ranking and even confidence for a full season or two. And it would need at least a year's intelligent learning to acquire the changed (mental) reflexes necessary to play top-class penholder technique under competitive strain.

Many authorities hold, too, that un-learning is more difficult than learning, hence new recruits would make relatively much faster progress. The muscular processes can in fact be trained into any willing player in a matter of weeks, and by any teacher worth his salt. However, it is the competitive motivation which breaks down the learner—always, and at all levels. And which ranked player wants to become a learner again?

We propose therefore to set up, at the E.T.T.A. Training Centres at Bradford and Harlow, an Experimental Group of 12 players aged 13 or 14, who must volunteer to learn and practise only "penholder" styles of grip, and to attend the Centres regularly for at least a year for this purpose. At the end of the first year they can decide for themselves whether they wish to change their grip style. They would be young enough to do this without handicap.

"Penholder" style is not by any means a fixed thing; if we are examining these matters properly there may be other variations producing equal or better efficiency. Therefore, parallel with the "penholder" pupils, we will cater for a "Free Grip" group, in which any flexible, rather than formalised or "orthodox," grip system can be developed. A certain minimum of ball sense and motor skill must be apparent in the young pupils before we can accept them. Places will be reserved for these Groups, and coaches allotted to them, so long as they guarantee to attend and practise regularly to plan.

INTERESTED PARENTS, PLEASE WRITE TO Director of Coaching, as above.

of county-level representation to a wide group of youngsters before they reach their last junior year; and (b) to serve as a friendly challenge to counties to spread their nets wide, to hold under-16 trials, etc.; (c) to enable counties to offer some practical honour to suitable candidates from Youth and Schools leagues, etc.

E.T.T.A. TRAINING CENTRES:

The Harlow and Bradford Centres are

in full action now. All who have attended have agreed that to play Table Tennis with players from many parts in one of these modern Sports Centres is an experience with a special value, and such opportunities should be offered to all E.T.T.A. members, whatever their category.

As our sessions have so far catered chiefly for (a) representative players or (b) juniors under coaching, we propose now to reserve some days for organised League parties.

Leagues are invited to bring eight (or more) players, of the type who do not get representative games, for a day at the Centres. Practice and friendly match-play will be arranged in such a way that each player meets at least six others, not from his/her own town.

Enrolment from Leagues now open—first come, first served.

As for juniors, well at these Centres you can see them improving under your eyes.

E.T.T.A. Training Centres — Programme

1. At The Sportcentre, Hammarskjold Road, HARLOW

Sunday sessions, always 2.0 to 7.0 p.m. unless otherwise indicated.

1965

- October 10. **Coaches' Study Day** (a few juniors accepted).
 October 31. **Leagues' Day** (Minimum parties of 8 non-representative players).
 November 14. **Training Session**—all levels.
 November 28. **Training Session**—all levels.
 December 19. **Leagues' Day** (Minimum parties of 8 non-representative players).

1966

- January 9. 10 a.m. to 4 p.m. **National Ranking Meeting**.
 4.0 p.m. to 7.0 p.m. **Juniors' Session**.
 January 15-16 **Essex Open**.
 February 6. **Under-16 Development Meeting** (Inter-County teams of 15 boys, 5 girls).
 February 27. **Training Session**—all levels.
 March 19. **Training Session**—all levels.
 May 1. **Best-Trained Youth Groups (Zone) Competition**.

2. At the Sports Centre, Parkside Road, off Manchester Road, BRADFORD

Sunday sessions, always 11.0 a.m. to 5.0 p.m. unless otherwise stated.

1965

- October 3. **Training Session**—all levels.
 October 1-17. 10.0 a.m. **County Players' Day** (Invitation only).
 November 14. **Leagues' Day** (Minimum parties of 8 non-representative players).
 November 21. 10.0 a.m. **County Players' Day** (Invitation only).
 December 12. **Under-16 Development Meeting** (Inter-County teams of 15 boys, 5 girls).

1966

- January 23. **Leagues' Day** (Minimum parties of 8 non-representative players).
 February 13. **Training Session**—all levels.
 February 20. 10.0 a.m. to 4.0 p.m. **National Ranking Meeting**.
 4.0 to 6.30 p.m. **Juniors' Session**.
 March 20. **Training Session**—all levels.
 May 8. **Best-Trained Youth Groups (Zone) Competition**.

Subscription: There is a standard subscription of 5s. per person, per session, balls being supplied. Special arrangements may be made for certain invitation events. All fees payable in advance.

Enrolment: Interested players, coaches, or organisers should apply for enrolment forms to Director of Coaching, or County Coaching Officials.

BEST TRAINED YOUTH GROUP COMPETITION

The 1965 Finals of the Best Trained Youth Group Competition were held at the R.A.F. Cosford and contested by Blackpool, Darwen, Newbury, Swindon and Worcester, winners of the local zones.

Newbury, led by Diploma coach Cyril Arnold and pictured below, were the eventual winners. Their league received the prize of a Tournament Table and a Challenge Cup. Each pupil received an E.T.T.A. plaque.

It was a photo-finish. After 20 practical tests, Newbury led Blackpool (Coach, Bob Wood) by five points in an aggregate of 850. The final test, a Question-and-answer session, widened the winning lead to eight points.

Group Captain Thomas, the Station Commandant, presented the prizes and expressed his admiration for the excellent work of all the competing teams and their smart turn-out.

Pictured (left to right) Jimmy Goslin, John Gregory, Carol Aldridge, Colin Wilkes, Jackie Smith, Cyril Arnold (coach), Pat Chilton, Jack Herbert, Carol Shergold, and Simon Dance.



BUTLIN TOURNAMENT

by Noel Ingram

Scholer In Form

EBBY SCHOLER, the German holder of the English Open, retained his singles title in the third Bultin's Open Championships at Mosney Camp, near Dublin, on September 4-5. Displaying all his skill he beat Bobby Stevens 10 and 12 in the semi-finals, then crushed Ian Harrison 5 and 15 in the final.

RESULTS

Men's Singles: Semi-Finals: E. SCHOLER (W. Germany) bt B. STEVENS 10, 12. I. HARRISON bt T. Caffrey 23, 17. **Final:** SCHOLER bt Harrison 5, 15.

Women's Singles: Semi-Finals: D. ROWE bt G. Sayer 17, 5. B. SAYER bt K. Doyle 5, 14. **Final:** ROWE bt B. Sayer 6, 10.

Men's Doubles: Semi-Finals: HARRISON/STEVENS bt D. Foley/K. O'Rordan 7, 8. SCHOLER/J. LEACH bt Caffrey/J. Cash 18, 13. **Final:** HARRISON/STEVENS bt Scholer/Leach—15, 14, 12.

Women's Doubles: Semi-Finals: E. SAYER/G. SAYER bt M. Doyle/K. Doyle 15, 9. ROWE/A. DAVIS bt J. Fitzsimons/M. Tobin 8, 7. **Final:** ROWE/DAVIS bt Sayer/Sayer—13, 18, 12.

Mixed Doubles: Semi-Finals: SCHOLER / Miss ROWE bt Stevens/Miss B. Sayer 8, 15. HARRISON / Miss G. SAYER bt Caffrey/Mrs. H. Best 16, 10. **Final:** SCHOLER/ROWE bt Harrison/G. Sayer 10, 13.

Same Again In Northumberland

IT'S the same line up again at Northumberland, with one addition. Mike Ford is now eligible for the county and may prove a valuable asset.

Unfortunately Maureen Heppell still wishes not to be considered and indeed may play for Durham. However, Stuart Lennie has rejected London for his native "Geordieland" and with Brian Burn will probably form the backbone of our senior team. If only the selectors could unearth some dynamic doubles pairs we would surprise some of the "glamour" sides.

The Juniors have their sights firmly set on the Northern title, and as Peter Whiteman and Pauline Burns are available to support Brian Burn their prospects seem excellent.

North Shields Y.M.C.A. look strong enough to retain the Northumberland First Division championship. M.P.N.I., for whom Arthur Chilvers has signed, may be their chief challengers, but Arthur's old club, Westonians, with Len and Maureen Heppell and Frank Mitchinson in the team should do well. Gateshead Y.M.C.A., Revac and Newcastle Y.M.C.A. are also expected to be among the league leaders.

The Inter-Town League title may not be decided until North Shields, the holders, meet Newcastle, and with home advantage Shields should repeat last season's victory.

Arnold Warents.

LANCS. WAIT FOR SYMONDS

by George R. Yates

LANCASHIRE are once again being kept on tenterhooks as to whether or not their Premier Division team will be spear-headed by Mike Symonds. The Warrington-born international, who has lodged in Sheffield for the past two years and in January starts a three-year teacher's training course at Swinton, is still pondering as to whether he should throw in his lot with Yorkshire or stay with the Red Rose county.

Stepping into the reckoning for possible county selection are Mrs. Deirdre Burnett, the former Berkshire player who has come to live in Blackpool, and Maureen Coc, a Durham County player, who is in Liverpool on a two years' educational course.

Newly promoted Cheshire will miss Mrs. Diane Johnson, who is expecting a baby around Christmas time. Big query is will Cheshire call on Mrs. Doreen Schofield, or junior international Judith Heaps, who, despite living in Reading, played for Cheshire juniors on a birth qualification last season?

Rankings following Lancashire's junior trials at St. Annes in early September are:—

BOYS: 1, Stephen Williams (Bolton); 2, Barry Lowther (Blackpool); 3, Robert Kelly (Bolton); and 4, Ian Burrows (Liverpool).

GIRLS: 1, Kathleen Pemberton (Widnes); 2, Barbara Kirkham (Blackpool); and 3, Margaret Houlder (Widnes).

After strenuous efforts by officials of the Manchester League led by that indefatigable pair, Les Cohen (chairman) and Les Jones (secretary), a brand new venue for the North of England Open has been unearthed.

It is the Park Works of Messrs. Mather and Platt Ltd., at Newton Heath, Manchester 10, whose spacious canteen will take 14 tables, double-banked, and afford competitors first class amenities inclusive of showers and full catering facilities.

Cumberland, inspired by the enthusiasm of secretary Ron Rigg, are far from being despondent at last season's results in the County Championships. They are looking ahead when the experience of playing better players is bound to raise the standard in this North-West outpost.

The county is represented on the National Council for the first time and there are ambitious plans for the County Open, successfully inaugurated last season. It will be staged in Whitehaven.

Whitehaven, instrumental in the re-formation of the Cumberland Association after a lapse of twelve years, and Carlisle are the county's two leagues.

Whitehaven, re-formed in 1960 with one senior division comprising ten teams, now boasts 36 senior teams in three divisions and 18 junior teams in two divisions.

The Cumberland Association are much indebted to the county education committee for a recent grant.

Later he partnered Diane Rowe, to whom he has recently become engaged, to win the mixed doubles, beating Harrison and Gloria Sayer in the final.

Harrison scored some measure of revenge in the men's doubles, pairing with Stevens to beat Scholer and Johnny Leach—15, 14, 12.

Miss Rowe collected a triple crown for she won the singles comfortably with successive wins over twins Gloria and Beverley Sayer in the semi-final, and contributed to a local success by partnering Mrs. Ada Davis of Dublin to win the women's doubles.

BIG SUCCESS

The tournament was staged by the Leinster branch of the Irish T.T.A., with Johnny Leach as organiser and Jim Marsh as tournament secretary. It proved a huge success, particularly the experiment of players umpiring their own matches up to the quarter-final stages. It went without a hitch and I feel that this "No Umpire" rule may well be adopted by our own council for all championships in future.

Leach deserves every credit for fostering this idea with his article in the May issue of "Table Tennis."

Challenge for Places

LAST season's winning team of Brian Copperwheat, Doug Folds, Sid Lawson and Geoff Parrott, can expect a challenge for their places from Jim Bysh, a former Surrey junior, and Trevor Beard, when Bedford League start defence of the South-East Midland League.

The women's team, who found Bletchley their big stumbling block, once again call upon Anita James, Jennifer Racey and Doreen Underwood, who have been strengthened by the return of Barbara Hammond.

League coach Mrs. Joyce Cox has spent the summer working on a junior squad to try to remedy last season's disappointment at this level.

Maurice Barton has succeeded Mrs. Edith Pacey as the Bedford League general secretary.

Sandwich Exploitation

SAYS HARRY VENNER

BRITISH players are not getting a fair crack of the whip where equipment is concerned, especially as regards bats. There are three factors that bother me—materials, design and price.

Let me deal with material first, for this has become a major problem with the growing popularity of the "sandwich" bat.

Best quality sandwich rubber is Japanese and has to be imported, either by the bat manufacturer or the individual via under-the-counter negotiations with visiting players, who appear to obtain it quite easily. The manufacturer obviously prefers to use it for completed bats, rather than sell the sheeting. So whichever way a player comes by sandwich rubber it appears to be more expensive than it should be.

Plain pimpled rubber of a reasonable quality is made in England so the players who use this material do not have these worries.

Now let me turn to the wood of a bat. This is far more important than often appreciated. While Finnish birch is excellent for bats faced with

pimpled rubber, it does not possess the required qualities when faced with sandwich rubber. Here the wood needs to be stiff, and light. Other countries have found the answer in a wood called "Ilomba."

AVOID GIMMICKS

Our bats are not so much at fault where design is concerned, but there are one or two that have failings with gimmicky blade shape, or handles not fitting the blade properly. These should be avoided.

Where the sandwich rubber situation is concerned I would like to see one of our rubber manufacturers prevailed upon to produce sandwich material of a quality at least equal to Japanese standards for sale to the bat makers and to individuals, who prefer to renovate their own bats without the expensive method of having to buy a new bat each time.

Failing this, I feel that the E.T.T.A. should take steps for bulk purchases of the material from the Japanese makers so that they could sell it to makers and sports dealers.

They owe some protection to affiliated members to prevent them being exploited.

Regarding the wood base to the bat, I am certain that if our manufacturers were to use "Ilomba" ply, it would boost their sales, for there would then be no need for English players to use foreign makes of bats at ridiculously exorbitant prices. Furthermore this could open up an export market.

So come on manufacturers. Let us see what you can do. The opportunity is surely there for you to be able to sell more and better quality bats at a cheaper price than foreign imports. For remember the foreign bats carry both import duty and purchase tax.

R.A.F. Lose

THE R.A.F., with much the same team as last season, opened their new campaign by entertaining Wiltshire at Colerne on September 8. They lost 4-6, Wiltshire juniors Willie Silto and Tony Wolf beating David Mawson and Neville Shorrick respectively in the last two rubbers.

Silto and Wolf were both unbeaten in singles but as a doubles partnership they lost to Dick Clode and Brian Mayfield, the R.A.F.'s top players. Mawson and Wally Ladmore also won the other doubles for the R.A.F.

4th EDITION, REVISED & ENLARGED

MODERN TABLE TENNIS

JACK CARRINGTON

'World's No. 1 Coach' • National Instructor to Sweden, Denmark, Finland, Ireland, etc. • Director of Coaching to the E.T.T.A.

The World's most authoritative book on table tennis technique

A classic book on playing technique, **Modern Table Tennis**, the revised edition, starts from absolute scratch, so it's for the beginner, and progresses to the most difficult shots and playing styles, so experienced players will find a lot to chew over. The Oriental "invasion" of the world table tennis scene is discussed and analysed, and altogether this is a book players of all standards could read and profit from. **Drawings, diagrams, photographs. 10s. 6d. net**

ORDER IT FROM YOUR LOCAL BOOKSHOP



THE MACCABIAH GAMES

Five Golds for Britain

GREAT BRITAIN enjoyed her greatest success yet in the table tennis at the Maccabiah Games in Tel Aviv in August, winning the gold medals in five of the seven events. In addition there were also two silver medals and two bronze.

Spearheading this wide sweeping achievement was Stan Jacobson, with a triple crown. He won the singles, beating Shoham, of Israel; the men's doubles with Jeff Ingber; and the mixed doubles with Irene Ogus, another triple gold medallist.

Miss Ogus also partnered Joyce Abrahams to win the women's doubles as well as the women's team title. And she just missed a clean sweep when she lost over three games in the singles final to Susy Javor, of Australia.

Miss Ogus and Mrs. Javor were on opposing sides in three finals, the singles being the Australian's only success.

Miss Abrahams gained bronze medals in the women's singles and in the mixed doubles with Ingber.

Britain narrowly missed another gold in the men's team, losing 4-5 to Israel. The score was 4-all when Louis Hoffman went on against Shoham for the deciding singles at 02.00 hours. He put up a bold fight but

although going to three games found Israel's No. 3, who has already beaten Jacobson and Ingber, just too good.

Shoham, who is Israel's Under-23 goalkeeper, elected to play in the table tennis rather than the football and has proved to be a player with a tremendous future.

FUTURE POWER

Hoffman reports that while table tennis conditions in Israel are far from ideal, their standard of play has made such big improvement over the past four years that they could become quite a power in the game.

Twelve nations took part in the Games and the new doubles ruling, brought into use for the first time, was a big success.

As a side to the table tennis, Jacobson and Hoffman also helped out the British lawn tennis team in an international against Israel and provided the first win after Britain had lost the first five games. Israel won 7-3.

MICHAEL MACLAREN'S
GLAMOUR SPOT

WHILST visiting the John Jaques stand at the recent International Sports Festival and Exhibition at Crystal Palace, I noticed that several girls would come over from the neighbouring stand of HELANCA and enjoy playing table tennis in between the half-hourly exhibitions which Jaques were putting on.

On enquiring I found out they were all fashion models showing off the various HELANCA productions, so I took the opportunity to gather them at the table for a glamour picture.

Left to right they are:

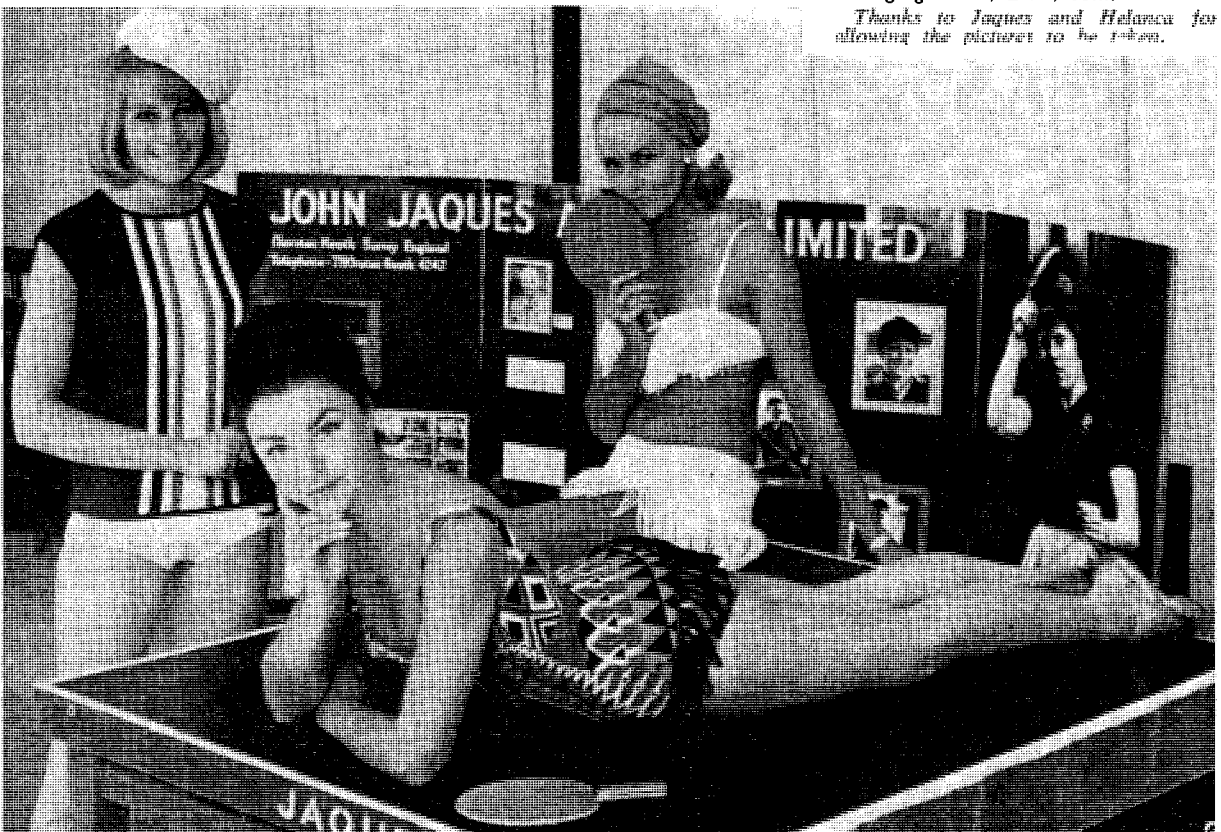
VENESSA SUTTON, 22 years, who has gained much of her modelling experience at the Paris Fashion Shows.

BILLINDA PHARAZYN, 23 years; she will be seen in the film "You Must Be Joking!"

MARIE-LOUISE HALSTEAD, 23 years, who had just returned from her honeymoon before the exhibition. Marie-Louise used to play in the HUDDERSFIELD League.

All the girls live in London and have almost the same measurements, averaging: 34in., 23in., 35in.

Thanks to Jaques and Helanca for allowing the pictures to be taken.



AROUND EAST ANGLIA**King's Lynn Are Back****BROTCHIE RETIRES**

TONY BROTCHIE has retired as Cambridge League secretary due to business commitments, but will continue as magazine secretary. His successor is Denis Fenton.

Coaching sessions for juniors continue at the Y.M.C.A. and it is hoped that many youngsters will take full advantage of the scheme. Youngsters who have emerged from previous coaching will be staking claims for places in the county team, which this year will miss the services of Martin White, the closed champion. Alan Ponder will be available at all times. Efforts must be made to increase the women's strength.

Coaching rallies, under the direction of John and Margaret Cornwall, will be held in various villages.

Last season's experiment of dividing the league into four divisions with sub-sections has come to stay. A number of new teams are among the 79 entered for the new programme. Y.M.C.A., the champions, can expect some tough opposition in the first division.

Cambridge City and Ely has each entered three teams in the South-East Midland League.

The Cambridgeshire closed championships will be at the Cambridge Corn Exchange on January 9, and the open at the same venue on April 2-3.

Leslie Constable.

NORFOLK'S most recent annual general meeting marked the end of the term of presidential office of Jack Meadows, of Wymondham. Mr. Meadows' enthusiasm did much to expand both the playing and the social side of table tennis. His successor is Douglas Craske, of Dereham.

The county is extending activities to include Top Ten competitions for both men and women, and a club knock-out championship.

EAST ANGLIAN EXPANDS

Gordon Harrison retired as secretary of the East Anglian League and has been succeeded by David Simpson, of Wymondham. The league has expanded this year. Beccles has joined the senior section and the junior league has been increased by two teams. Cromer, although going from strength to strength with male players, were in danger of elimination through lack of women but during the close season two new players have been signed on.

Dereham have established a new record in the county by making a start in August.

King's Lynn, absent from county affairs for several years, are rejoining. Their application to take part in the East Anglian League arrived too late but individual championships and champion club events remain open to them.

The final note comes from our county umpire secretary who says that he has sent a complete list of fixtures to all qualified umpires for their consideration. He asks that all other umpires wishing to qualify this season to get in touch with him at his new address, 150, St. Clements Hill, Norwich, NOR 150, so that he can send on the current test paper and make arrangements for practical work while there are plenty of opportunities available.

TWO NEW LEAGUES

WELLINGBOROUGH and North Herts are newcomers to swell the ever-growing ranks of the South-East Midland League. Ely extend their activities with a team in the Ladies' Division while Bletchley move into the Men's Division for the first time.

Teams taking part are: Bedford, Bletchley, Cambridge City, Ely, Hunts. Central, Kettering, Northampton, North Herts, Peterborough, St. Neots, and Wellingborough.

The League's tournament has been arranged for Cambridge Corn Exchange on April 10 and a limit of 128 has been placed on the men's singles.

The area of entry into the South-East Midland League has now been limited to within a 30 miles radius of St. Neots.

SAMS BROTHERS LTD.**CONDUIT LANE, HODDESDON, HERTS.**

Telephone: HODDESDON 4461-2

*Makers of***HIGH CLASS TABLE TENNIS TABLES**

- ★ TOURNAMENT HEAVY DUTY 1" Norm £49.10.0
- ★ TOURNAMENT CLUB MODEL 1" Norm £42.7.6
- ★ ½in. MODEL WITH FOLDING LEGS £27.15.0

Obtainable from your local sports shop

BACK TO THE 2nd

AFTER a short stay with the elite it is back to the run of the mill second division for Staffordshire again this season.

The experience gained in the top flight should, however, prove invaluable to this young side who, with any luck, will again be a force to be reckoned with.

No new faces are expected in the first or second team this season but there has been a slight reshuffle on the county committee. **ROY COLCLOUGH**, the former county secretary returns to the ranks as county league secretary and **A. H. McILREATH**, the Wolverhampton chairman takes over the new post of tournament secretary. As **JIM HAYWARD** will now be concentrating solely on coaching the first team will be under the guidance of **ALAN DEELEY**.

Alan, who became a father in June, told me his wife **DOROTHY** was back in training, good news I am sure for the county selectors. **BERT HISCOCK** will be the new second team captain while **RAY WILLIAMSON** will again be in charge of the juniors.

Back to last season and a pat on the back for **MALCOLM SCOTT** for winning the **Leslie Forrest Memorial Trophy**. The award was presented at Hobson's Sports Club, Wolverhampton, after the final of the Midland Closed. After the English A.G.M. at Birmingham, Ivor Eves, Geoff James, Tom Blunn and Norman Reeve made the short journey to Malcom's home at Claverley to see the new "Deep Meadow" Table Tennis Centre which in fact is an extension of his house.

Around the leagues I hear that there will be no women's division in Wolverhampton; that the Cambridge club at Walsall will be without Glen Warwick and Bernard Hanson this season; and that Rex Edwards on holiday from South Africa will be playing in the 25th Woodfield tournament later this month.

GLoucestershire RANKINGS

IT'S the same again where the Gloucestershire executive is concerned, a sign of confidence in the way the county is administered.

The county closed has been arranged for October 15-16 at Wills Hall, Bedminster, Bristol.

The county ranking list is: **MEN:** 1, Ian Harrison; joint 2, Dennis Holland, Bryan Merrett, Roy Morley; 5, Barry Brady; joint 6, Morley Mordecai, Dick Bowden.

WOMEN: 1, Pat Taylor; 2, Joan Collier; 3, Jean Golding; 4, Lesley Hawkins.

ST. BRIDES

TABLE TENNIS CLUB

Bride Lane, Fleet Street, E.C.4

has some vacancies. The Club meets at 6 p.m. on Wednesdays and Fridays.

Write to Hon. Secretary, Miss M. Robins, 129a, Green Wrythe Lane, Carshalton, Surrey.

FIXTURE ENGAGEMENTS

In the Open Tournaments below, events shown in the column are *additional* to M.S., W.S., M.D., W.D., and X.D. in every case. Tournaments marked (R) are Restricted. Suitable entries are inserted in this diary without charge but all organisers should send information to the Editor at the earliest possible date.

Date	Title and Venue	Extra Events	Organising Secretary
Oct. 10	Newbury Junior Open Corn Exchange, Newbury, Berks.	U/13. J.B.S. J.G.S.	A. A. J. Mosson, 29, Croft Road, Newbury, Berks.
15	Cork Open Cork		
16-17	NETHERLANDS OPEN The Hague		
22-23	Belfast County Open Belfast		
23-24	Sussex Open White Rock Pavilion, Hastings		D. N. Tyler, 1, York Buildings, Hastings.
23-24	Woodfield Invitation Woodfield Club, Fenn Road, Wolverhampton	J.S.	G. Bullock, 8, Rutland Crescent, Bilston, Staffs.
29-30	C. Dublin Championships Fairview C.Y.M.S., Dublin		
29-31	HUNGARIAN OPEN Budapest		
30	Swansea Open Swansea		
30	North of England Open Aberdeen		
30	Hull and East Riding Open Madeley Street Baths, Hull.	J.B.S. J.G.S.	K. N. F. Jordan, "Burnlea," 57, Skillings Lane, Brough, East Yorks.
31	Merton (R) Open Merton Club and Hampshire County	J.S.	Mrs. J. M. Coop, 9, Headswell Avenue, Bournemouth.
31-Nov. 1	AUSTRIAN OPEN Vienna		
Nov. 2-4	POLISH OPEN Warsaw		
5-6	Ulster Open Newtownards		
5-6	Merseyside Open Dunlop Canteen Speke, Liverpool	J.B.S. J.G.S.	B. A. Leeson, 16, Avolon Road, Liverpool 12.
6-7	Kent Junior Open Marine Pavilion, Folkestone	U/15 U/13 U/11	F. G. Manooch, 216, Park Road, Sittingbourne, Kent.
14	Hastings Tigers Area event Bexhill Athletic Club, Bexhill		J. F. Wyles, 48a, Eversfield Place, St. Leonards, Sussex.
19-20	East of Ireland Open Balbriggan		
21	Portsmouth (R) Open South Parade Pier, Southsea	J.B.S. J.G.S.	P. Goldring, 52, Winter Road, Southsea, Hants.
27	East of Scotland Open Edinburgh		
27	Cumberland Open The Drill Hall, Whitehaven	J.B.S. J.G.S.	R. Rigg, 1, Park View, Sunnyhill, Whitehaven.
27	Cardiff Open Cardiff		
Dec. 4-5	Newbury Open Corn Exchange, Newbury		A. A. J. Mosson, 29, Croft Road, Newbury, Berks.
5-7	SCANDINAVIAN OPEN Stockholm		
10-11	IRISH OPEN Cork		
11-12	Middlesex Open Hanwell Community Centre, Hanwell, Middlesex	J.B.S. J.G.S.	Miss I. Moss, 49, Okehampton Road, Kensal Rise, London, N.W.10
11-12	Scottish Closed Glasgow		
18	Yorkshire Junior Open Madeley Street Baths, Hull	U/15	R. Balmford, 205, Park Avenue, Hull, Yorkshire

UMPIRES CORNER

by COLIN CLEMETT

Three Major Changes

THREE important changes to the Laws and International regulations, approved at the I.T.T.F. General Meeting in Ljubljana last April and now introduced as experiments to be reviewed in 1967, are the subject of this first article of the season.

Although the exact wording has not been officially issued by the I.T.T.F. the intention is clear and the changes have been approved by the E.T.T.A. for the current season.

The first change concerns the service, where the requirement for the ball to be struck within an imaginary continuation of the side lines has been deleted in both singles and doubles.

The only restriction on the position of the ball at the moment of impact on the racket is that it must be behind the end-line of the server's court, or an imaginary extension of this line.

It has always been difficult for an umpire to judge whether or not the ball is served outside the side-lines, so that this change is a simplification of his job.

If, as the supporters of the new Law obviously believe, it does not confer any undue advantage on the server it will be equally welcome both to players and spectators, who find the presence of line judges distracting, and to organisers,

who have to provide the necessary officials.

The next law change was instigated by an E.T.T.A. proposal based on recommendations from the North Middlesex League, and concerns the order of play in doubles.

It has long been recognised that the winning of the toss could give a great advantage in doubles, particularly where the opposing pairs are not known to each other. Under certain circumstances it was possible for one pair to play the majority of a match in the order that suited them.

NEW ORDER

Under the new arrangement the order of serving and receiving in successive games and during the deciding game now follows a set pattern from the time it is decided who serves and receives first. Let us fall back on our old friends "A" and "B" opposed by "X" and "Y" for a simple explanation of the new order.

A and B have won the toss and A is to make the initial service. X has chosen to receive so the order is A to X, X to B, B to Y, Y to A throughout the first game. The order must be changed for the second game, so if Y chooses to serve, his service must be received by

B, making the order Y to B, B to X, X to A, A to Y. (If X had chosen to serve first the first receiver would have been A, but the order would still have been the same). Should B serve for the start of the third game there is no option but for Y to receive, while if A serves the receiver must be X.

In the deciding game (either the third or fifth) the receiving pair must change places when either pair reaches the score of ten and the rest of that game is played in the same order as the second game.

Although an explanation of the rule sounds complicated, players should find little difficulty in applying it as its effect is to make obligatory the changes of order that usually occur from choice under the present rule.

The final change concerns the Expedite Rule. Previously this was applied after 15 minutes in any game of a set, and after ten minutes in subsequent games. That ten minutes waiting period has now been abolished and once the rule has been applied in any game it continues throughout the rest of the set. The procedure for applying the Rule has also been modified with each of the receiver's good returns from 1 to 13 being counted aloud, clearly but without shouting, in the language of the country where the event is being played. If play continues after the 13th return the umpire shall stop play and award the point to the receiver.

I shall be watching with interest the effect of these alterations in the coming season and look forward to hearing from umpires and players their views as they gain experience of the new conditions.



TROPHIES

all clubs can afford

Club secretaries are invited to consult H. Samuel about Cups, Tankards, Shields and Medals.

Designed and made by H. Samuel thousands of these trophies are possessions of leading clubs everywhere. Discuss your needs with the manager of H. Samuel's local branch, without obligation, or write direct to our headquarters.

Sterling Silver Medals from 14/- Challenge shields from 60/-
Individual miniature shields from 10/- Silver-plated cups from 9/-

H. SAMUEL

TROPHY SERVICE, HUNTER'S ROAD, BIRMINGHAM 19

EUROPEAN CHAMPIONSHIPS TOUR

Each month we will bring you latest news and progress in the organisation of the European Championships. So watch this space; there will be something of new interest for everyone.

I.C. Changes

Elections held during the summer have resulted in one or two changes in the officers and executive of the International Club.

Aubrey Simons has resigned as Chairman, owing to the fact that he is now so busy that he feels that he cannot give adequate time to this position. His resignation, naturally, was accepted with regret.

Geoff Harrower has taken over as Chairman (he is now living at 13, Althorp Place, Corby, Northants—telephone Corby 3211 and 3212), and Michael Maclaren was returned unopposed as Hon. General Secretary. His address is 9, Woodcote Avenue, Wallington, Surrey—telephone Wallington 3285.

Brian Wright continues as Hon. Treasurer, but, following his marriage to Mary Shannon, he also has moved, and his new address is 50, Wide Way, Mitcham, Surrey. Unfortunately, there were no candidates for the position of Social Secretary, and it is hoped that, before long, a willing volunteer will be coming forward.

The six members of the Executive Committee are: Mrs. Betty Griffin (née Betty Steventon), Len Adams, Les Cohen, Ron Crayden, Laurie Landry and Tony Piddock.

EAST OF ENGLAND

Continued from Page 9

removed early by Bob McKewon, who then found George Livesey too tight. Another good performance was that of Glen Warwick of Staffs., who beat Roy Morley.

Form took another switch in the junior events with Miss Henwood surprisingly beating Miss Heppell to win the girls' title, after the Northumberland girls had once again proved too good for Miss Hemmings in the semi-finals.

Hydes, following a semi-final win over Burns, beat Keith Lawrence in the boys' final.

THE BISHOPSGATE VICTORIA TABLE TENNIS CLUB

has vacancies for new members this season. The Club meets at the Trevelyan Hall, St. Ann's Lane, Great Peter Street, S.W.1 on Tuesday and Thursday evenings.

Write to the Hon. Sec., H. A. Packer, 6, Ravenscourt Road, W.6.

ADVERTISING MATERIAL

Many Leagues have still not replied to the circular seeking orders for advertising material for the Championships. If you cannot possibly be at Wembley at least you can display a poster or a car sticker, or use envelope stickers to help keep the event before the public eye.

The Bracknell and District League were generous and enterprising enough to have their envelopes over stamped with an advertisement for the championships.

HOUSE MAGAZINES

We are keen to get articles inserted in the house or sports magazines of large firms and organisations. If your own firm would be likely to accept such articles, or if you know of any others which would be willing, please let us know.

TOURNAMENTS

Tournament organisers especially are asked to co-operate in advertising the championships on entry forms, in programmes, by announcements on finals night and by any other means. Laurie Landry will be contacting most organisers in advance to seek assistance in making arrangements for the sale of tickets, souvenirs, etc.

BALL POINT PENS

Souvenir pens engraved "European Table Tennis Champs. Wembley—April 1966" are wonderful value at 6s. 6d. per dozen including postage. Please send us your order.

The famous St. Luke's Club under Father Goose's guiding hand have hit upon the idea of giving a pen with every programme they sell at representative matches, etc.

ENTRIES

Entries have been received so far from the following countries: Austria, Belgium, Bulgaria, Czechoslovakia,

Denmark, France, Germany D.T.T.V., Greece, Hungary, Ireland, Jersey, Luxembourg, Malta, Netherlands, Norway, Poland, Scotland, Sweden, U.S.S.R., Yugoslavia.

PHILATELISTS

A European Championships cancellation stamp will be used for letters posted at a special post office at the Empire Pool and Sports Arena. First day covers will be posted to collectors. Further details will be available later.

GUARANTEE FUND

A Guarantee Fund has been launched as an insurance against any deficit on the championships. A letter has been sent to numerous firms and organisations, asking them to be generous enough to guarantee any sum they would be prepared to donate, if necessary, to meet any deficit which might arise. Collection will be made proportionately if the sum guaranteed exceeds the deficit.

Guarantees will be welcome from Leagues, Counties or individuals. No sum is too small and, needless to say, none too large! Please address your offer to: E.T.T.A., 26/29, Park Crescent, London, W.1.

ACKNOWLEDGEMENTS

The Association gratefully acknowledges:—

A cash donation from Ferranti Ltd. The offer by the Dunlop Sports Co. Ltd. to bear the complete cost of the meeting of the European Table Tennis Union.

The offer by John Jaques and Son Ltd. to bear the cost of the finals night party with an added cash donation, if necessary, to make up a certain sum.

PUBLICITY AND ADVERTISING

These aspects are under the control of NORMAN REEVE, 8, Thornton Grove, Hatch End, Middlesex. Tel. HATCH End 1470. In his absence ALMA REEVE will be able to deal with all matters.

The Press Liaison Officer for the North of England is GEORGE YATES, 43, Knowsley Road, Smithills, Bolton. Tel. BOLTON 42223.

TICKETS, TICKETS, TICKETS

To satisfy early demand it has been decided to put tickets on sale to Leagues at a discount of 12½% on all orders of £5 and over placed by 31st December. After that date they will be made available to the general public. Prices are as follows:—

Saturday evening 16th April, 1966 (team events finals)

Wednesday evening 20th April, 1966 (individual events finals)

30s., 21s., 15s., 10s. 6d., 6s. (numbered and reserved)

All other days

Admission by daily rover ticket 7s. 6d. or 5s.

(whatever time of arrival).

FIRST COME, BEST SERVED.

Arrange your COACH PARTY and PLACE YOUR ORDER NOW

YORKSHIRE DROP SECOND TEAM

EDITOR'S POSTBAG . . .

THERE'S an awful lot of blank space on Yorkshire's fixture card for home senior county matches. In fact the season opens with only **TWO** on the list.

With the first team relegated and needing to win the six-team Division Two North to ensure a rapid return to Premier Division rank, it has been decided not to run a second team.

The first time the seniors fell from the top section the second team went into the Midland Division and strolled to the title with the loss of only two sets. It is considered that the opposition would not be stern enough to warrant another campaign of this sort.

However, it is hoped to arrange some friendlies for a line-up of second team standard, probably at times when players from the South and Midlands are in the North for a tournament.

David Bevan is expected back after a season's absence abroad and a summer's county cricket with his native Gloucestershire, and he, Neale and the Duncombes will be attractive visitors for

Cumberland (November 20), Lancashire seconds (March 5) and Northumberland (March 19).

Those two home matches are against Durham at Northallerton on October 23 and Lincolnshire on January 22, probably at Leeds.

The juniors, aiming for their fifth consecutive northern championship, have three matches out of five at home—against Durham at Northallerton (October 23), Cheshire at Dewsbury (January 22) and Lancashire at Harrogate (March 26).

I believe the grand total of five home county matches is the lowest for 14 years.

County tournament dates are November 27 (Closed, at Bradford), December 18 (Junior Open, Hull) and February 19 (Open, York).

Main change among administrators is the withdrawal of Alan Thompson as coaching secretary. Former county captain and coach for nine seasons, he becomes a vice-president.

The coaching post goes to Donald Leach, secretary of the Dewsbury League, whose west region seat on the executive is taken by John Kedge, snr. (Huddersfield).

The selection committee has reverted from three (Alan Cook, Alan Thompson, Harry Flinton) to five (Mr. Flinton, Herbert Dainty, Ken Proudlock, Rea Balmford and Mr. Kedge).

John Kedge, jnr., rounded off a splendid 1964-65 season by taking Yorkshire's Leslie Forrester Memorial Award for outstanding contributions to the county game.

Why Not Barnes ?

IS Chester Barnes still considered as the official "Bad Boy" of Table Tennis?

Yesterday I heard of the latest recipients of the Victor Barna award. Although I have no objection to the award being given to more than one person, surely "the most notable performance by an English table tennis player" (page 87, E.T.A. Handbook) was that of Chester winning the English Closed for the third successive year, without mention of his performances in the World Championships.

Yours sincerely,
HARRY SPRAGGS
(East London League).

DOUBLES CHANGE

IT is interesting to speculate on a possible change of tactics which may occur as a result of the change in the Law on receiving in doubles.

In the past, it was almost always the case for the winners of the toss to serve. However, with the new Law might tactics now be for the winners to give away service, and then play the first game the **wrong way round**? This would make them the right way in the 2nd game, wrong at the start of the 3rd, but right at the end of the 3rd, where it matters most.

I would certainly expect to see these tactics used in Mixed Doubles, and in other doubles where one particular order is known to be better. **J. WRIGHT.**
(North Acton T.T.L.)

LEICESTER TAKE-OVER

LEICESTER and District, the largest league in Leicestershire, has been enlarged to include Leicester Y.O.C. League. It is hoped this will lead to a higher standard at intermediate and junior level in the Y.O.C.

The decision of the Midland League to reduce the number of players to three per team should produce keen rivalry for places. Competition will be no less keen for places in the county team for the Junior (Midland) Division. John Corral, who attended the England trials, would appear to be the only player sure of a place. John Wells, David Randall, John O'Connor, Ivor Billson, Margaret Hainsworth and Susan Baxter are all possible.

League secretaries within the county remain the same as last year but a notable retirement is that of George Horsman, chairman of Loughborough since its inception. He becomes the new president, while David Arterton takes over as chairman.

Leicestershire T.T.A. are calling their new junior singles cup the "Horsman Cup" in appreciation of his services.
Philip Reid.

BERNARD CROUCH TROPHY

KENT have withdrawn from the **Bernard Crouch Trophy** Competition, which now switches back to the original three counties, Essex, Middlesex, and Surrey.

Kent's problems were mid-week venues and an official to be responsible for the fixtures.

BERNARD CROUCH TROPHY COMPETITION

Final table for season 1964-65:

	P.	W.	L.	F.	A.	P.
Middlesex	6	4	2	32	22	8
Essex	6	4	2	29	25	8
Surrey	6	3	3	27	27	6
Kent	6	1	5	20	34	2

R. T. BROWN

(KEN & EVELYN ALLINSON)

5 Star Service To Players By Players

- ★ ALL BATS INC. STIGA, COR DU BUY
- ★ THE BEST EQUIPMENT, CLOTHING, FOOTWEAR
- ★ SPECIAL TERMS TO CLUBS
- ★ PROMPT SERVICE
- ★ LISTS BY RETURN

312 UXBRIDGE ROAD, ACTON,

LONDON, W.3

Tel: ACO 3886

COUNTY CHAMPIONSHIPS ROUND UP

By John Wright

TWO NEW WELSH COUNTIES

DENBIGHSHIRE, with a team in the Midland Division, and **Pembrokeshire**, in Junior South-West, are newcomers to the County Championships, bringing the total of entries to 46 Senior teams and 28 Junior.

A well-attended A.G.M. dealt rapidly with 29 proposals to amend

rules, and also passed a resolution for these to be rearranged. This most necessary task has been completed, thanks to Tony Wickens, and the 1965-66 Handbook with the new order should be with Counties before these notes appear in print.

Ivor Eyles announced that he would

be unable to continue as Chairman of the Championships after this season. As Secretary from May, 1955, until he became Chairman in June, 1961, Ivor has served the Championships with great distinction, and will be sorely missed.

One of the most remarkable changes agreed by the A.G.M. was the deletion of the word "National" from the title: proposed, discussed and agreed in less than two minutes. Also agreed was an alteration to order of play, with the Mixed and Women's Doubles interchanging. A sensible change, this, for with the old order the top women had a long wait for their first set.

A postal ballot was needed to change the "County of Choice" regulations, and as a result "bona fide membership for at least one season of a League affiliated to the County of Choice" comes in.

Malcolm Scott, chairman of the Staffordshire Association, became the fourth holder of the Leslie Forrest Memorial Award. Efforts to keep secret the identity of the recipient and the place of presentation were again successful, Malcolm receiving the trophy at the Midland Closed in May.

The Junior play-off, at Ultra Electronics, Acton, resulted in a fourth consecutive win for Essex.

It was played on a league basis between the five divisional winners.

The results were: **Essex** bt **Yorkshire** 7-2; bt **Warwickshire** 7-2; bt **Kent** 6-0; bt **Wiltshire** 8-1. Total: 4 wins.

Yorkshire bt **Warwickshire** 5-2; bt **Kent** 7-2; bt **Wiltshire** 7-2. Total: 3 wins.

Warwickshire bt **Kent** 9-0; bt **Wiltshire** 5-4. Total: 2 wins.

Kent bt **Wiltshire** 5-4. Total: 1 win.

To commemorate the achievement of the Wiltshire Juniors in winning their division at the first attempt, a group of Wiltshire sportsmen (led by Don Hillier) have presented the Championships with the "Moonraker Trophy." This handsome cup will be awarded annually to the winners of Junior South-West. With the staging of the Champion County v. The Rest match in Swindon, Wiltshire has definitely made a big impact at National level.

Yorkshire and **Staffordshire**, relegated from the Premier to 2nd North and 2nd Midland respectively, are replaced by **Sussex** and **Cheshire**. The former trounced **Somerset** 8-1, while **Cheshire** came

COUNTY DIARY

October 16	Cheshire v Essex , Gatley Y.M.C.A., Church Road, Gatley	7.00 p.m.
October 16	Lancashire v Kent , Atkinson Vehicles Ltd., Walton-le-dale, Preston.	7.15 p.m.
October 16	Sussex v Surrey , North Mundham Village Hall, North Mundham, near Chichester.	7.00 p.m.
SECOND DIVISION SOUTH		
October 9	Buckinghamshire v Hertfordshire , A.H.W. Youth Club, Bletchley	6.30 p.m.
October 30	Hampshire v Bedfordshire , St. James's Institute, Stourfield Road, Pokesdown, Bournemouth.	7.00 p.m.
SECOND DIVISION NORTH		
October 16	Lincolnshire v Northumberland , Boston Grammar School Gymnasium, Rowley Road, Boston.	7.15 p.m.
October 16	Yorkshire v Durham , Church House, Romanby Road, Northallerton.	7.00 p.m.
October 23	Cumberland v Lancashire , Kirk T.T. Club, High Street, Whitehaven.	6.30 p.m.
SECOND DIVISION MIDLAND		
October 2	Warwickshire v Nottinghamshire , Church Hall, Vicarage Street, Nuneaton.	7.00 p.m.
October 16	Derbyshire v Glamorgan	
October 16	Monmouthshire v Staffordshire , Alcan Industries, Rogerstone, Newport.	7.15 p.m.
October 16	Nottinghamshire v Oxfordshire	
October 16	Derbyshire v Oxfordshire , Nottingham T.T.L. H.Q., Beech Avenue, New Basford, Nottingham.	7.15 p.m.
October 16	Worcestershire v Warwickshire , Cripplegate Pavilion, Worcester	7.00 p.m.
October 30	Oxfordshire v Worcestershire , St. Margaret's Hall, Polstead Road, Oxford.	7.00 p.m.
October 31	Staffordshire v Derbyshire , Y.M.C.A., West Bromwich.	2.30 p.m.
SECOND DIVISION WEST		
October 16	Cornwall v Somerset	
October 16	Devon v Dorset	
SOUTHERN DIVISION		
October 9	Huntingdonshire v Hertfordshire , Eaton Socon Institute, Eaton Socon.	7.30 p.m.
October 16	Norfolk v Cambridgeshire , C.E.Y.M.S., Norwich.	6.45 p.m.
October 23	Suffolk v Huntingdonshire , Beccles Caxton Club, Beccles.	7.00 p.m.
October 30	Hertfordshire v Hampshire , Hollybush J.M.I. School, Hertford	7.00 p.m.
MIDLAND DIVISION		
October 13	Warwickshire v Oxfordshire , N. C. Josephs, Stratford-on-Avon.	7.15 p.m.
October 16	Worcestershire v Denbighshire , "Treloen," Hanley Swan, Nr. Worcester.	7.00 p.m.
October 16	Warwickshire v Oxfordshire	
October 30	Oxfordshire v Worcestershire , St. Margaret's Hall, Polstead Road, Oxford.	2.30 p.m.
JUNIOR DIVISION SOUTH		
October 9	Berkshire v Kent , Reading Y.M.C.A., Parkside Road, Reading.	3.00 p.m.
October 16	Surrey v Sussex , Higgs Hill Canteen, Vauxhall Bridge Road, S.W.8.	4.00 p.m.
JUNIOR DIVISION NORTH		
October 16	Yorkshire v Durham , Church House, Romanby Road, Northallerton.	3.00 p.m.
October 23	Cumberland v Lancashire , Kirk T.T. Club, High Street, Whitehaven.	3.00 p.m.
JUNIOR DIVISION EAST		
October 16	Hertfordshire v Suffolk , Providence Mutual Assurance Co., Williams Road, Walsworth, Hitchin.	5.00 p.m.
October 16	Middlesex v Norfolk , South Ruislip.	3.00 p.m.
October 16	Buckinghamshire v Essex	
October 30	Suffolk v Middlesex , John Wilde Club, Stradbroke Road, Fakenfield, Lowestoft.	3.00 p.m.
JUNIOR DIVISION MIDLAND		
October 2	Warwickshire v Nottinghamshire , Nuneaton Boys Club Avenue Road, Nuneaton.	7.00 p.m.
October 16	Nottinghamshire v Oxfordshire	
October 16	Worcestershire v Warwickshire , Cripplegate Pavilion, Worcester	3.00 p.m.
October 16	Leicester v Staffordshire , Leicester Y.M.C.A., 113 Granby Street, Leicester.	3.30 p.m.
October 16	Derbyshire v Oxfordshire , Nottingham T.T.L. H.Q., Beech Avenue, New Basford, Nottingham.	7.15 p.m.
October 30	Oxfordshire v Worcestershire , St. Margaret's Hall, Polstead Road, Oxford.	2.30 p.m.
JUNIOR DIVISION SOUTH-WEST		
October 16	Pembrokeshire v Monmouthshire , Table Tennis Centre, Romney Garage, Picton Road, Milford Haven	3.00 p.m.
October 23	Gloucestershire v Glamorgan .	

through 5-4 in an exciting contest with Warwickshire.

Essex will have to fight hard to retain their title, especially as Middlesex hope to have David Creamer available for selection again.

The only change in 2nd South sees a new second team from Sussex replacing their promoted firsts, but 2nd North is one down on last season, Yorkshire's relegation forcing out their 2nd team and Cheshire promoted.

Warwickshire's failure to win their challenge match keeps their 2nd team in the Midland war, Derbyshire jumping over this team to increase the entry in 2nd Midland to eight. Second West remains unchanged, as does Southern, and also Midland subject to the above.

The line up for season 1965-66

PREMIER DIVISION

CHESHIRE, ESSEX, GLOUCESTERSHIRE, KENT, LANCASHIRE, MIDDLESEX, SURREY, SUSSEX.

SECOND DIVISIONS:

Midland:

DERBYSHIRE, GLAMORGAN, MONMOUTHSHIRE, NOTTINGHAMSHIRE, OXFORDSHIRE, STAFFORDSHIRE, WARWICKSHIRE, WORCESTERSHIRE.

North:

CUMBERLAND, DURHAM, LANCASHIRE II, LINCOLNSHIRE, NORTHUMBRLAND, YORKSHIRE.

South:

BEDFORDSHIRE, BUCKINGHAMSHIRE, HAMPSHIRE, HERTFORDSHIRE, KENT II, SURREY II, SUSSEX II.

West:

CORNWALL, DEVON, DORSET, SOMERSET, WILTSHIRE.

REGIONAL DIVISIONS

Midland:

DENBIGHSHIRE, OXFORDSHIRE II, STAFFORDSHIRE II, WARWICKSHIRE II, WORCESTERSHIRE II.

Southern:

BUCKINGHAMSHIRE II, CAMBRIDGESHIRE II, HAMPSHIRE II, HERTFORDSHIRE II, HUNTINGDONSHIRE, NORFOLK, SUFFOLK.

JUNIOR DIVISIONS

East:

BUCKINGHAMSHIRE, ESSEX, HERTFORDSHIRE, MIDDLESEX, NORFOLK, SUFFOLK.

Midland:

LEICESTERSHIRE, NOTTINGHAMSHIRE, OXFORDSHIRE, STAFFORDSHIRE, WARWICKSHIRE, WORCESTERSHIRE.

North:

CHESHIRE, CUMBERLAND, DURHAM, LANCASHIRE, NORTHUMBRLAND, YORKSHIRE.

South:

BERKSHIRE, HAMPSHIRE, KENT, SURREY, SUSSEX.

South West:

GLAMORGAN, GLOUCESTERSHIRE, MONMOUTHSHIRE, PEMBROKESHIRE, WILTSHIRE.

1964-65 AVERAGES

Competition is becoming tougher. That would appear to be the lesson from last season's averages, which were held over from the last issue. Only 18 players achieved 100 per cent as against 26 the previous season.

Pride of place must go to Ingrid Sykes, the Warwickshire junior. She was a double hundred per center, achieving a clean sheet in both the Midland and the Junior Midland Divisions.

Mary Shannon was the only Premier Division player to be unbeaten. The overwhelming strength of Essex among the juniors was emphasised by three of their boys, David Brown, Stuart Gibbs and Keith Lawrence all going through without defeat.

The full list of players achieving 100 per cent is:—

MEN: R. Chandler (Sussex), D. Baddeley (Warwicks), J. Keogh (Lancs.), J. Harrison (Warwicks.).

WOMEN: M. Shannon (Surrey), J. Williams (Warwicks), P. Dainty (Yorks.), B. Pearson (Devon), M. Jenkins (Bucks.), I. Sykes (Warwicks.).

BOYS: G. Salter (Surrey), R. Judd (Warwicks.), D. Brown (Essex), S. Gibbs (Essex), K. Lawrence (Essex). GIRLS: M. Campbell (Kent), I. Sykes (Warwicks.), J. Townsend (Wilts.).

PREMIER DIVISION

	W.	L.	%
C. Barnes (Essex)	9	1	90
B. Merrett (Gloucestershire)	11	3	79
R. Morley (Gloucestershire)	11	3	79
B. Wright (Middlesex)	11	3	79
I. Harrison (Gloucestershire)	9	3	75
S. Gibbs (Essex)	10	4	71
C. Warren (Surrey)	10	4	71
M. Symonds (Lancashire)	8	4	67
D. Neale (Yorkshire)	9	5	64
H. Pidcock (Kent)	9	5	64
G. Muranyi (Surrey)	6	4	60

Miss M. Shannon (Surrey)	6	0	100
Miss D. Rowe (Middlesex)	4	1	80
Miss L. Bell (Essex)	5	2	71
Mrs. C. Duncombe (Yorkshire)	5	2	71

SECOND DIVISION SOUTH

R. Chandler (Sussex)	12	0	100
N. Brabrook (Surrey)	9	3	75
P. Shirley (Buckinghamshire)	9	3	75
K. Baker (Kent)	7	3	70
S. Gundipe (Sussex)	7	3	70
P. Williams (Sussex)	7	3	70
J. Moore (Surrey)	8	4	67
L. Cooper (Kent)	4	2	67
E. Hodson (Hertfordshire)	4	2	67
R. McKewon (Surrey)	4	2	67
D. Whittaker (Kent)	4	2	67

Miss P. Piper (Surrey)	5	1	83
Mrs. B. Bird (Kent)	3	1	75
Mrs. B. Andrews (Hertfordshire)	2	1	76
Miss J. Canham (Hertfordshire)	2	1	67

SECOND DIVISION MIDLAND

D. Baddeley (Warwickshire)	10	0	100
G. Evans (Glamorgan)	7	1	88
M. Billington (Warwickshire)	8	2	80
D. Samnel (Glamorgan)	6	2	75
G. Gear (Glamorgan)	7	3	70
S. Hahn (Oxfordshire)	7	3	70
D. Backhouse (Warwickshire)	5	3	63
C. Jaoksen (Oxfordshire)	6	4	60

Miss J. Williams (Warwicks.)	5	0	100
Mrs. J. Lloyd (Worcestershire)	2	1	67

SECOND DIVISION NORTH

J. Keogh (Lancashire)	8	0	100
R. Hampson (Cheshire)	11	0	92
G. Livesey (Lancashire)	9	1	90
M. Johns (Cheshire)	10	2	83
R. Crusham (Lancashire)	5	1	83
E. Taylor (Durham)	6	2	75
D. Hirst (Yorkshire)	7	3	70
W. Barker (Durham)	8	4	67
J. Kedge (Yorkshire)	4	2	67

Miss P. Dainty (Yorkshire)	3	0	100
Mrs. D. Johnson (Cheshire)	5	1	83
Mrs. W. Eanor (Lincolnshire)	3	2	60

SECOND DIVISION WEST

R. Bowles (Somerset)	7	1	88
R. Clode (Wiltshire)	7	1	88
C. Bush (Dorset)	5	3	63
B. Davis (Cornwall)	5	3	63
W. Northcott (Cornwall)	5	3	63
D. Smith (Somerset)	5	3	63
A. Wolfe (Wiltshire)	5	3	63

Miss B. Pearson (Devon)	2	0	100
Mrs. F. Coop (Dorset)	3	1	75
Miss F. Bonner (Somerset)	3	1	75

SOUTHERN DIVISION

D. Davies (Hampshire)	11	1	92
A. Watson (Buckinghamshire)	9	1	90
L. Wooding (Buckinghamshire)	7	1	88
C. Edwards (Hampshire)	10	2	83
D. Grant (Hertfordshire)	5	3	63
F. Leckie (Buckinghamshire)	6	4	60

Miss M. Jenkins (Bucks.)	3	0	100
Mrs. V. Gillam (Cambridgeshire)	4	1	80
Mrs. B. Cassell (Norfolk)	3	1	75

MIDLAND DIVISION

J. Harrison (Warwickshire)	4	0	100
W. Gallagher (Worwickshire)	7	1	83
C. Deaton (Derbysire)	6	2	75
C. Judson (Oxfordshire)	6	2	75
R. Morris (Warwickshire)	4	2	67
A. Davies (Oxfordshire)	5	3	63
A. Hunt (Derbyshire)	5	3	63

Miss I. Sykes (Warwickshire)	4	0	100
Miss A. Charman (Staffordshire)	2	1	67

JUNIOR DIVISION SOUTH

G. Salter (Surrey)	8	0	100
D. Corbett (Kent)	6	2	75
M. Hart (Surrey)	6	2	75
R. Heath (Kent)	3	1	75
R. Harper (Kent)	5	3	63

T. Riley (Sussex)	5	3	63
Miss M. Campbell (Kent)	4	0	100

JUNIOR DIVISION NORTH

J. Kedge (Yorkshire)	9	1	90
B. Burn (Northumberland)	8	2	80
J. Frankland (Lancashire)	7	3	70
M. Johns (Cheshire)	5	3	63
P. Canham (Yorkshire)	6	4	60
T. Clarke (Lancashire)	6	4	60

Miss P. Burns (Northumberland)	4	1	80
Miss L. Forkes (Yorkshire)	4	1	80
Miss M. Cole (Durham)	3	2	60

JUNIOR DIVISION MIDLAND

R. Judd (Warwickshire)	10	0	100
S. Carrington (Warwickshire)	9	1	90
B. Keates (Staffordshire)	9	1	90
I. McCallum (Staffordshire)	5	1	83
P. Richardson (Warwickshire)	8	2	80
M. Yeates (Worcestershire)	6	2	75
M. Cole (Staffordshire)	5	3	63

Miss I. Sykes (Warwickshire)	5	0	100
Miss W. Hinton (Staffordshire)	4	1	80
Miss J. King (Oxfordshire)	3	1	75

JUNIOR DIVISION EAST

D. Brown (Essex)	10	0	100
S. Gibbs (Essex)	8	0	100
K. Lawrence (Essex)	8	0	100
R. Allen (Middlesex)	7	3	70
S. Seaholme (Hertfordshire)	7	3	70
P. Harmer (Hertfordshire)	6	4	60
R. Maison (Middlesex)	6	4	60
B. Fetch (Middlesex)	6	4	60

Miss E. Canham (Hertfordshire)	2	1	67
Miss L. Henwood (Essex)	2	1	67
Miss L. Williams (Bucks.)	2	1	67
Miss J. Youngs (Suffolk)	3	2	60

JUNIOR DIVISION SOUTH-WEST

W. Smith (Monmouthshire)	9	1	90
R. Bishop (Glamorgan)	10	2	83
J. Morgan (Glamorgan)	5	1	83
D. Samuel (Glamorgan)	9	3	75
A. Wolfe (Wiltshire)	9	3	75
G. Davies (Glamorgan)	4	2	67
Miss J. Townsend (Wiltshire)	6	0	100
Miss J. Eatough (Gloucs.)	4	2	67

OFFICIAL NOTES

The following officers and councillors were elected for 1965/66:—

OFFICERS

Chairman, I. C. EYLES; **Deputy Chairman**, G. JAMES; **Hon. Treasurer**, T. BLUNN.

NATIONAL COUNCIL

Berkshire, A. M. LIJNSKY; **Buckinghamshire**, L. THOMPSON; **Cornwall**, A. R. BUNT; **Cumberland**, G. R. YATES; **Devon**, Mrs. F. JARVIS; **Dorset**, D. J. MEECH; **Durham**, E. REAY; **Essex**, H. WALKER; **Gloucestershire**, L. C. T. DAVIS; **Kent**, C. JASCHKE; **Lancashire**, N. COOK; **Leicestershire**, P. REID; **Lincolnshire**, K. DEWAR; **Middlesex**, N. K. REEVE; **Nottinghamshire**, E. TAYLOR; **Oxfordshire**, A. J. HOBDAV; **Somerset**, A. RICHENS; **Staffordshire**, M. E. SCOTT; **Sussex**, K. WATTS; **Warwickshire**, M. GOLDSTEIN; **Worcestershire**, I. R. CRICKMER; **Yorkshire**, W. MITTON. **Co-opted**: C. CLEMETT, A. K. VINT, O.B.E., G. WHITE.

Nominations received from Bedfordshire, Cheshire, Cambridgeshire, Derbyshire, Hampshire, Hertfordshire, Norfolk, Northumberland, Surrey, Suffolk and Wiltshire were invalid.

The Hon I. G. S. MONTAGUE was re-elected President of the Association, and Messrs. Spain Brothers were re-elected Auditors.

SUB-COMMITTEES

Because of the overriding importance of the European Championships, the

National Council, under Rule 48, co-opted the Hon. Organiser of the Championships to the Management Committee, and the Hon. Referee, Hon. Deputy Referee, and the Chairman of the International Contacts Committee to the National Council, all without vote.

The following sub-committees were created:—

Management:

The Officers, M. GOLDSTEIN, E. REAY, N. K. REEVE, K. WATTS and C. JASCHKE (co-opted).

County Boundaries:

K. WATTS (Chairman), C. CLEMETT (Hon. Secretary), N. COOK, K. DEWAR, H. WALKER.

Coaching and Schools:

C. JASCHKE (Chairman), J. H. CARINGTON (Hon. Secretary and Director of Coaching), S. FROHLICK, P. REID, M. E. SCOTT, G. STEGGALL, L. THOMPSON, L. S. WOOLLARD.

English Championships:

G. JAMES (Chairman), D. PETER LOWEN (Secretary), T. BLUNN, C. J. CLEMETT, Mrs. F. JARVIS, W. MITTON.

Handbook:

T. BLUNN (Chairman), W. MITTON (Hon. Secretary), A. J. H. WICKENS.

Master Points Scheme:

A. M. LIJNSKY (Chairman), W. MITTON (Hon. Secretary and Administrator), L. G. ADAMS, D. GAME, A. LEIGH, G. YATES.

National Team Competitions:

M. GOLDSTEIN (Chairman), L. C. T. DAVIS (Hon. Secretary), I. CRICKMER.

Rules:

T. BLUNN (Chairman), A. J. H. WICKENS (Hon. Secretary), I. C. EYLES, M. GREATREX, C. JASCHKE, W. MITTON, K. WATTS, E. G. WHITE.

Selection and Ranking:

SENIOR: N. K. REEVE (Chairman), D. PETER LOWEN (Secretary), J. A. LEACH (Non-playing Captain, Men's team), R. J. CRAYDEN (Non-playing Captain, Women's team), J. INGBER, B. MERRETT.

JUNIOR: E. REAY (Chairman), N. COOK (Hon. Secretary), L. F. LANDRY (Non-playing Captain), L. G. ADAMS, B. MERRETT, L. THOMPSON.

Standing Orders:

K. WATTS, E. G. WHITE, A. J. H. WICKENS.

Tournaments:

G. JAMES (Chairman), W. MITTON (Hon. Secretary), W. GOLDSTEIN, J. K. KENNERLEY, L. F. LANDRY, D. M. ROBSON, G. YATES.

Umpires and Referees:

G. JAMES (Chairman), C. J. CLEMETT

(Hon. Secretary), W. GOLDFINCH, F. G. MANNOOCH, G. OWEN, E. G. WHITE, A. J. H. WICKENS.

PANELS

Advisory Equipment:

G. V. BARNA, T. BLUNN, J. H. CARINGTON, N. COOK, G. DECKER.

Victor Barna Award:

G. V. BARA, T. BLUNN, M. GOLDSTEIN.

Archives/Library:

L. S. WOOLLARD.

REPRESENTATIVES

County Championships:

N. COOK, L. THOMPSON.

Central Council of Physical

Recreation:

D. PETER LOWEN.

NATIONAL COUNCIL

APPOINTMENTS

Press Officer:

N. K. REEVE.

Editor of "Table Tennis" Magazine:

W. HARRISON EDWARDS.

Liaison Officer to "Table Tennis" Magazine:

HARRY WALKER.

VICTOR BARNA AWARD

This was awarded to England's Women's team (R. J. Crayden—non-playing Captain, D. Rowe, M. Shannon, L. Bell, and I. Ogus), for winning the European Team Championships.

APPROVAL OF BALLS FOR THE 1965/66 SEASON:

The following balls were approved for play in England:

Dunlop Barna 3 Crown and 2 Crown.

Halex 3 Star and 2 Star.

Spalding Villa XXX and XX.

Haydon Tema 3 Star and 2 Star.

TEAM SELECTIONS

8th European Junior Championships: Prague—July 12th-15th, 1965. S. GIBBS (Essex), A. HYDES (Yorks.), M. JOHNS (Cheshire), MISS P. HEMMINGS (Herts.), MISS M. HEPPELL (Northumberland), L. F. LANDRY (non-playing Captain).

v Germany D.T.T.B.: August 14th, 1965, at Crystal Palace Recreation Centre: G. C. BARNES (Essex), B. D. WRIGHT (Middlesex), D. NEALE (Yorks.), MISS M. SHANNON (Surrey), MISS D. ROWE (Middlesex). Non-playing Captains: J. A. LEACH (Essex), and R. J. CRAYDEN (Surrey).

v Sweden: August 30th, 1965, at Crystal Palace Recreation Centre: G. C. BARNES (Essex), I. O. HARRISON (Gloucestershire), D. NEALE (Yorks.). Non-playing Captain—J. A. LEACH (Essex).

v Czechoslovakia: August 30th, 1965, at Crystal Palace Recreation Centre: MISS M. SHANNON (Surrey), MISS D. ROWE (Middlesex), MISS L. BELL (Essex). Non-playing Captain—R. J. CRAYDEN (Surrey).

English Table

Tennis Association

Patron: Her Majesty The Queen.

President: Hon. I. G. S. Montagu.

Chairman: I. C. Eyles.

Deputy Chairman: G. James.

Honorary Treasurer: T. Blunn.

Secretary: D. P. Lowen.

Office of the Association: 26/29, Park Crescent, London, W.1 (Telephone: LANgham 6312).

Published on the first Saturday of each month, October to May inclusive. Postal Subscription 10s. for eight issues, post free.

Advertisements: R. Boniface, 161 Hoe Street, Walthamstow, London, E.17.

Circulation Manager: Louis Hoffman, 180 Brick Lane, London, E.1. Tel.: Shorditch 7391.

Editorial: W. Harrison Edwards, c/o Sports Press, 142 Fleet Street, London, E.C.4 (FLE 5352).

CLASSIFIED ADVERTISEMENTS

6d. per word prepaid (minimum 12 words).
Box Number, including postage, 2s.

GOODS FOR SALE

CLOTH CLUB BADGES made to your own design, any quantity. Low prices, quick delivery.—S. A. Oory & Company, 20 St. John's Hill, London, S.W.11.

SPORTS TROPHIES. Club Secretaries, send for illustrated catalogue.—Northern Sports Trophies, 12 Willerby Road, Hull.

DRAW SHEETS

RESULT PADS 3s. per pad of 100 leaves. Available from Walthamstow Press,

Guardian House, Forest Road, London, E.17.