



We goofed.

We hate making mistakes, particularly when they lead to you making a mistake. We scrupulously edit all our patterns, but when an inaccuracy does slip through we post a correction as quickly as possible.

Corrections for this book have been compiled in this PDF. Any pages with errors have been completely redesigned; you can print and then insert the corrected pages in your copy of the book. If we're aware of an error, we fix it before reprinting a book, so your edition may already include these changes. Scroll to page 2 of this document to view the corrections.

The corrections listed here should allow you to complete your project with ease. If not, give us a call at 800-426-3126 and we'll do our best to help. And again, many apologies for the error.

Time for Tea: TEA COZY and TABLE RUNNER

Designed by Ava Coleman



Afternoon tea is fun, especially when it's shared with special people. This tea cozy and table runner were inspired by a family gathering with four generations of knitters.




Skill Level: Easy ■■■□□

Finished Measurements

Cozy (measured flat at longest and widest points): 9" x 10"

Table Runner: 12" x 48"

MATERIALS

5 skeins of Adagio Fingering Yarn from Yarn Place (100% wool; 50 g; 218 yds) in color 689208 

Size 6 (4 mm) needles, or size to obtain gauge

Tapestry needle

Gauge: 20 sts and 24 rows = 4" in lace patt

TEA COZY

The tea cozy is made of 2 identical pieces that are joined, leaving an opening for the spout and handle.

CO 51 sts.

Setup row: Knit.

Row 1 (RS): Sl 1, K3, work row 1 of solid and open waves chart (page 50), K3, K1tbl.

Row 2 (WS): Sl 1, K3, purl to last 4 sts, K3, K1tbl.

Keeping first and last 4 sts as established, work rows 1–24 of chart twice, then work rows 1–4 one more time for a total of 52 rows of chart.

Work rows 53–64 of open waves dec chart (page 50).

Rows 65–67: Knit.

BO all sts.

Rep for second piece.

Finishing

Weave in ends. Wash and block pieces, then sew tog at sides, leaving openings for handle and spout.

TABLE RUNNER

CO 55 sts.

Work in garter st for 12".

Beg working solid and open waves chart (page 50) as follows:

***Row 1 (RS):** Sl 1, K5, work chart row 1, K5, K1tbl.

Row 2 (WS): Sl 1, K1, purl to last 2 sts, K1, K1tbl.

Keeping first and last 6 sts as established, work all rows of chart 6 times.

Knit 8 rows. BO all sts.*

Pick up 55 sts along cast on edge. Work from * to * to correspond with other side.

Finishing

Weave in ends. Block to dimensions.

Ripple and Bead CARDIGAN

Designed by Sauniell Nicole Connally



This all-over lace cardigan gives the stylish look of detailed lace while still providing enough coverage to give a little warmth. Simple shaping and drop-shoulder sleeves give the piece a classic and flattering look without making the pattern too complex. Made with a machine-washable yarn, it is great for any daytime look. Choose a nice deep shade and this cardigan would work great for a night out.




Skill Level: Intermediate ■■■□

Size: S (M, L, XL, 2X)

Finished Bust: 38 (40, 45, 48, 54)", including front bands

Finished Length: 28 (28½, 29, 29½, 29½)"

MATERIALS

7 (8, 8, 8, 9) skeins of Gems Light Worsted from Louet (100% merino wool; 100g; 175 yds) in color 80 Terra Cotta 

Size 7 (4.5 mm) circular needle, 16" long, or size to obtain gauge

Size 6 (4.0 mm) circular needle, 32" long

4 split ring stitch markers or scrap yarn

5 stitch markers

3 stitch holders or scrap yarn

Tapestry needle

5 buttons, ¾" diameter

Sewing needle and matching thread

Gauge: 19 sts and 26 rows = 4" in ripple and bead mesh patt on larger needle

BACK

With larger needle, CO 97 (102, 114, 118, 134) sts.

Knit 6 rows.

Setup row (RS): K1, P2 (4, 2, 3, 2), K1, pm, work row 1 of ripple and bead mesh chart (page 71) on next 41 (41, 51, 51, 61) sts, pm, K1 (1, 0, 1, 0), P5 (6, 4, 4, 4, 4), K1 (1, 0, 1, 0), pm, work row 1 of chart on next 41 (41, 51, 51, 61) sts, pm, K1, P2 (4, 2, 3, 2), K1.

Work patt as established through row 14 on chart.

Shape Back

Dec row (RS): Sl1-K1-*psso*, work in patt to last 2 sts, K2tog.

Rep dec row every 8th row twice—91 (96, 108, 112, 128) sts.

Work even for 7 rows.

Dec row (RS): Work to second marker, sl marker, sl1-K1-*psso* 1 (1, 0, 1, 0) time, P2tog 0 (0, 1, 0, 1) times, work in patt to end.

Rep dec row every 8th row twice—88 (93, 105, 109, 125) sts.

Work even until piece measures 20". End after a WS row.

Trellis and Flowers STOLE

Designed by Alice Scherp




This stole features a garden theme, with the trellis pattern on the outside edge and diamond ladders framing the floral mesh pattern in the center. The different colors separate the patterns. This handspun lace-weight qiviut yarn has a lovely transparent look. Working with color changes was a bit of a challenge, but the results are well worth the effort!



Skill Level: Experienced ■■■■

Finished Measurements: 24" x 84", blocked

MATERIALS

Handspun 2-ply yarn* (80% qiviut, 10% silk, 10% merino; 2.6 oz total; approx 600 yds) in the following amounts and colors: 

- A** .65 oz; approx 150 yds in natural
- B** 1.95 oz; approx 450 yds in hand-dyed heather

Size 4 (3.5 mm) circular needle, 24" long, or size to obtain gauge

Blocking wires and/or rustproof pins

Tapestry needle

*The designer spun her own yarn for this stole. Any ultra-fine, lace-weight qiviut, cashmere, or alpaca would make a beautiful stole. To make this stole using standard lace-weight yarn (440 yds/50 g), you'll need approximately 300 yards of A and 1000 yards of B.

Gauge: 32 sts and 36 rows = 4" in floral mesh patt

PATTERN STITCH

Seed Stitch

(Worked over an odd number of sts)

Row 1 (RS): K1, (P1, K1) to end of row.

Row 2: Purl the knit sts and knit the purl sts as they face you.

Rep row 2 for patt.

INSTRUCTIONS

Use a separate ball of yarn for each color area. To change colors in middle of a row: With the first color, knit up to color change, then drop first color, pick up second color, crossing yarn underneath first color, and work first st tightly. Give end of old color a slight tug to lock colors tog, then cont knitting with second color.

With A, CO 163 sts.

Seed Stitch Edging

Work seed stitch for 1", ending after a WS row.

Trellis Pattern

Next row (RS): With A, work 8 sts in seed st; with B, work row 1 of trellis chart (page 79); with A, work 8 sts in seed st.

Work patts as established, working rows 1-34 of Trellis chart once, then rows 3-34 once more; total of 66 rows of trellis patt.

Diamond Ladders Pattern

Next row (RS): With A, work 8 sts in seed st; with B, cont trellis chart; with A, work row 1 of diamond ladders chart (page 79) over next 17 sts; work 43

sts in St st; work row 1 of diamond ladders chart over next 17 sts; with B, cont trellis chart; with A, work 8 sts in seed st.

Work patts as established until rows 1-10 of diamond ladders chart have been worked once.

Floral Mesh Pattern

Next row (RS): Work in colors and patts as established to end of first diamond ladders chart, with B, K1, work row 1 of floral mesh chart, K1, cont in colors and patts as established to end of row.

Work patts as established until 45 vertical reps of diamond ladders with floral mesh in the center are complete.

Reverse Patterning for Second End

Work diamond ladders patt, then trellis patt, then seed stitch edging.

BO all sts loosely.

FINISHING

Wash and block to dimensions. If desired, when dry lightly steam edges and corners.



Copper Queen Beaded STOLE

Designed by Renee Leverington




This versatile stole makes a great wrap for cool summer evenings or a warm scarf for chilly fall days. The beaded accents make it a great accessory for your favorite jeans or your little black dress!



Skill Level: Intermediate ■■■□

Finished Measurements: 21" wide x 85" long

MATERIALS

6 skeins of Jamieson & Smith 2-Ply Jumper-weight (100% Shetland wool; 25g; 125 yds) in color FC38 Copper 

Size 6 (4 mm) circular needle, 24" long, or size to obtain gauge

5 stitch markers

10 opaque green bicone beads, 4 mm

15 grams of copper glass seed beads

Steel crochet hook small enough to fit through hole in bicone beads

Transparent (or color to match yarn) bead thread

Beading needle

Tapestry needle

Blocking wires and/or rustproof pins

Gauge: 4½ sts and 6 rows = 4" over St st

SPECIAL TECHNIQUES

Knitted Cast On: Make a sl knot with a 3" to 4" tail and place on left needle. K1, leaving first st on needle, then turn right needle toward you and place new st on left needle. Cont in this manner until the desired number of sts are cast on.

Attaching bicone beads: Place a bicone bead on the hook end of the crochet hook, insert crochet hook into the st that the bead is to be attached to, and remove the st from the left needle, slide bead down onto the st, then place the st back onto the left needle. Knit that st as usual. The seed beads will be sewn on after you have blocked the shawl.

INSTRUCTIONS

CO 61 sts, using knitted CO method, create edge picot as follows: CO 5 sts then **BO 2 sts** as follows: K1, (K1tbl, pass the first knitted st over second st) twice, place rem st on right-hand needle back on left-hand needle. Cont adding sts by CO 5 sts and **BO 2 sts**, until you have 61 sts and 20 picots on your needle.

Work all rows in chart A (page 86) once.

Work all rows in chart B (page 87) a total of 8 times.

Work all rows in chart C (page 87) once.

FINISHING

Binding off: Using knitted CO method, create edge picot as follows: *CO 3 sts then **BO 2 sts** as follows: K1, (K1tbl, pass first knitted st over second st) twice, (K1, return both sts to left needle and K2tog tbl, K1) 3 times, place rem st on right-hand needle back on left-hand needle. Rep from * until all sts have been bound off, you should have 20 picots on BO edge.

Weave in ends. Wash and block to dimensions.

Lace and Colorwork Wimple

Designed by Annie Modesitt



This romantic hood uses a floral lace motif that is echoed in colorwork. It's a wonderful, warm design that will keep your head and neck toasty even in the coldest weather, and all without ruining your hairstyle.



Skill Level: Experienced ■■■■

Finished Measurements: 30" circumference and 22" long

MATERIALS

Silk Rhapsody from Artyarns (100% silk wound with 70% kid mohair and 30% silk; 100 g; 260 yds) in the following amounts and colors:

- A** 2 balls of color 113 Browns
- B** 1 ball of color 255 Cool Light Green
- C** 1 ball of color 135 Warm Reds

Silk Mohair from Artyarns (70% kid mohair, 30% silk; 230 yds; 25 g) in color:

- D** 1 ball of MS417 Warm Beige

Size 8 (5 mm) circular needle, 36" long, or size to obtain gauge for colorwork

Size 7 (4.5 mm) circular needle, 36" long, or size to obtain gauge for lace

Stitch marker

Tapestry needle

Gauge

20 sts and 24 rows = 4" in floral colorwork patt on larger needles with colors A, B, and C

One lace panel rep = 3" in floral lace patt on size 7 needles with color D

BOTTOM HEM

With smaller needles and A, CO 160 sts. Work in St st for 4 rows, join work, pm to note start of rnd. Work 5 rnds St st.

Begin Twisted Float Trim

Turn work so you're working on WS. Keeping strands to RS of work and knitting or purling into back of st to twist it, work 1 rnd as follows: K1 with C, K1 with A, drop strand, *bring strand of C over strand of A, K1 with C, bring strand of A over strand of C, K1 with A; rep from * to last st, K1 with C. Notice that this will twist the strands of yarn. Untwist yarns before proceeding.

Begin Bottom Colorwork

Turn work so RS is facing. With larger needles and starting with row 1 of floral colorwork chart (page 91), rep all rows of chart once.

Next rnd: With A, purl.

Next rnd: With D, knit.

Next rnd: With A, purl.

BEGIN LACE SECTION

Using smaller needles and starting with row 1 of lace chart (page 91), change to D and work through row 36 of chart, then start with row 1 and work through row 22–58 rows total.

BEGIN TOP COLORWORK

Change to larger needles.

Next rnd: With A, purl.

Next rnd: With D, knit.

Next rnd: With A, purl.

Turn colorwork chart over so that row 1 is on the top and row 36 is on the bottom.

Starting at row 36, beg colorwork chart using colors as designated.

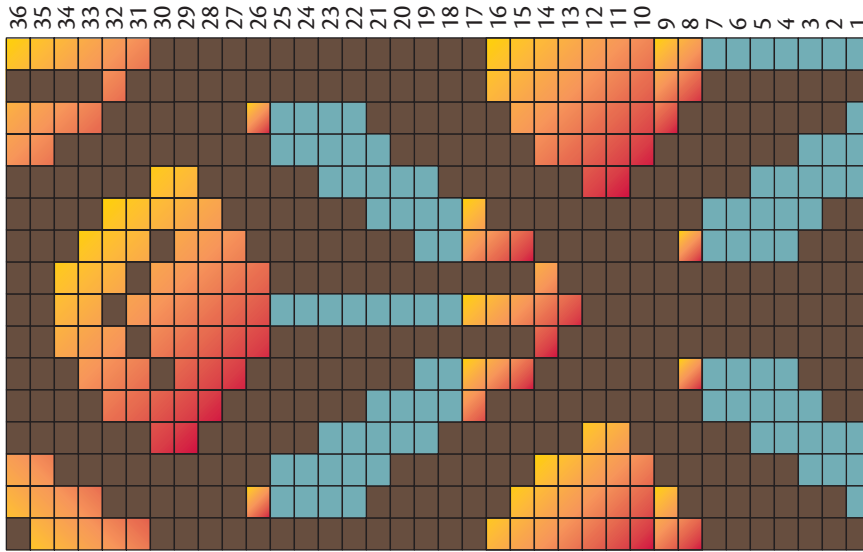
Work all rows of chart once, ending with row 1. BO very loosely.

FINISHING

Weave in ends. Wash and block to dimensions. Turn bottom hem up so that edge folds at twisted float trim and whipstitch facing to WS of wimple. Fold top colorwork in half to the inside and whipstitch to WS of wimple so that WS will not show around face when worn.



Floral Colorwork

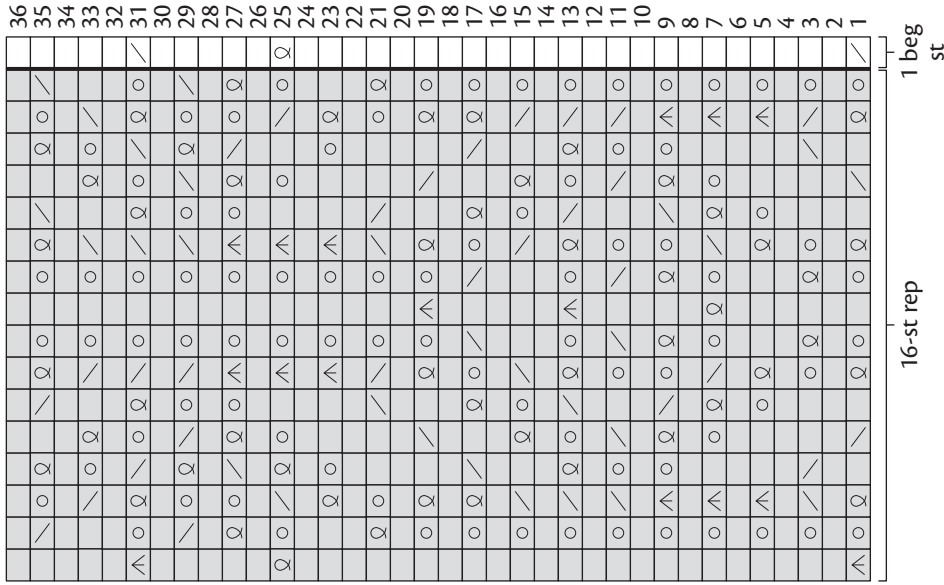


Key

- A (113 Browns)
- B (224 Cool Light Green)
- C (135 Warm Reds)

Work rnds 1–7 with A and B.
 Work rnds 8–17 with A and C.
 Work rnds 18–25 with A and B.
 Work rnds 26–30 with A and C.
 Work rnds 31–34 with A, B, and C.
 Work rnds 35 and 36 with A and B.

Lace



Key

- K on RS, P on WS
- K1 tbl
- K2tog
- K2tog tbl or ssk
- sl 1-K2tog-ssso
- YO

All rnds of charts are worked from right to left.

