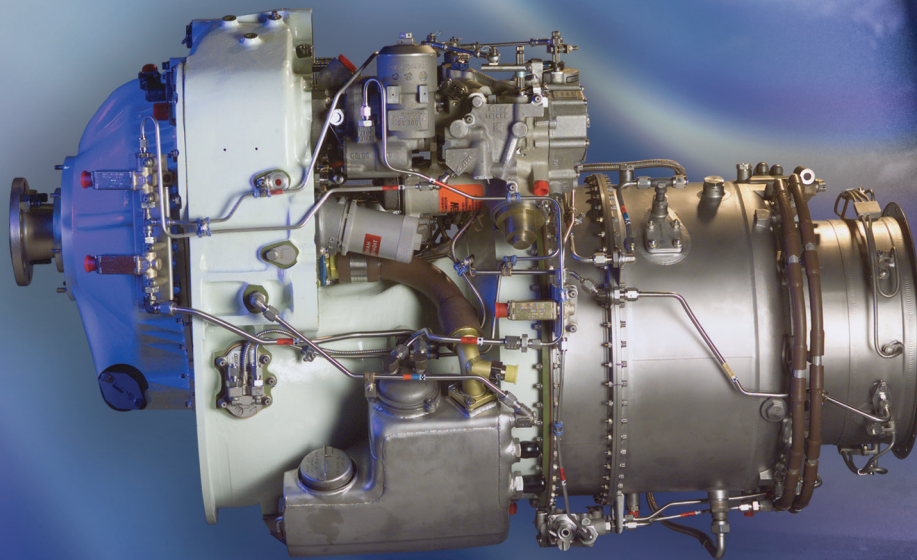


TPE331-10 Turboprop Engine

Honeywell



**HIGH PERFORMANCE.
INCREASED PERFORMANCE.
LOWER COST OF OWNERSHIP.**

**Advanced Engine Performance and
Power Generation Capability**

TPE331-10 TURBOPROP ENGINE

Specifications -

(Sea level-standard day)

Power output: shp 940
 shp (thermo) 1,000
 eshp 944
 eshp (thermo) 1,045
 ESFC: 0.534
 RPM: gas gen 41,730
 shaft output 2,000
 (cw from rear) 1,591
 (ccw from rear)

Weight: 385 lb
 Pressure ratio: 10.55
 Airflow: 7.7 lb/sec
 Fuel: Jet A, Jet B, Jet A-1, JP-8, JP-1, JP-4, JP-5, JP8+100
 Oil: Mil-L-23699B, Mil-L-7808, Type I/Type II
 Electrical: 24 vdc, 16.2 amp

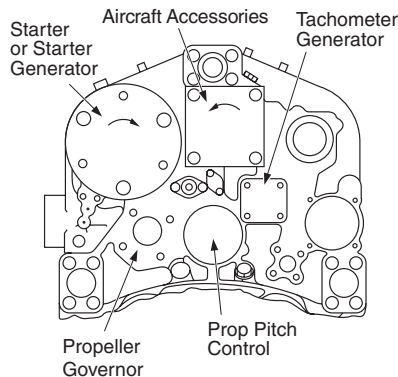
(max)

(Demonstrated) Start capability: SL-30,000 ft
 No minimum O.A.T. to + 55°C

(Demonstrated) Operational limits: SL-45,000 ft
 No minimum O.A.T. to + 55°C

Compressor bleed: high pressure 10% (max)

*Available in cw and ccw



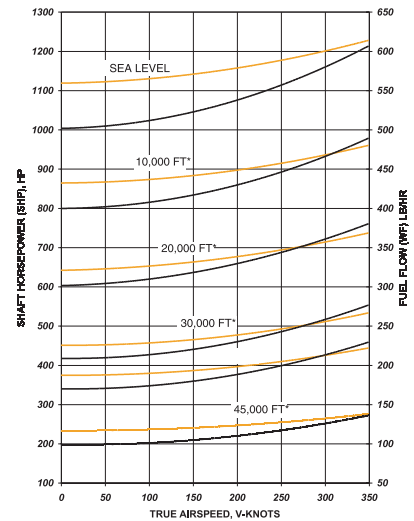
Basic Engine Includes

- Control System
 - Single Red Line /Auto-Start Controller
 - Hydromechanical Fuel Control
- Propeller Governor
- Fuel Pump
- Fuel Shutoff Valve,
- Fuel Anti-ice Heating System
- Dual Continuous Ignition System
- Lubrication System
- Propeller-Pitch Control
- Oil Temperature-Sensing Bulb
- Negative-Torque-Sensing (NTS) System
- Beta-Pressure Sensing Switch
- Fire-Shield Adapter
- Propeller Flange
- Torque and Temperature Limiting

- Fuel Purge System
- Air Speed and Ambient Pressure Ratio Transducer

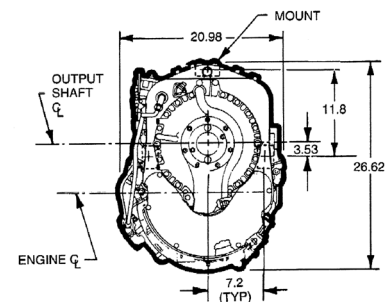
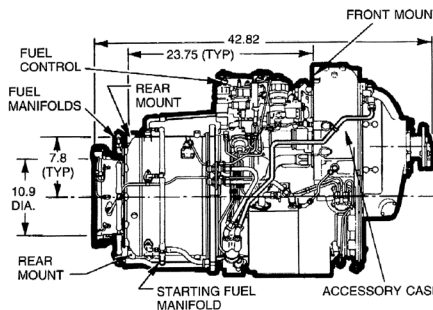
Optional Accessories/Features

- Water Methanol Augmentation Manifold
- Aluminum Gearbox



Nominal Use	Type of Drive (One Each)	AND Drive Modifications	Rotation Facing Drive Pad and rpm	Maximum Torque (lb-in)			Overhung Moment (lb-in)
				Continuous	Overload	Static	
Aircraft Accessory	AND20001 Type XI-B (Modified)	Rotation and rpm	CCW 3,959	250	375	1,650	125
Starter or Starter-Generator or Alternator	AND20002 Type XII-D (Modified)	Rpm, T _C , T _O , and Stud Pattern Rotated 30 Degrees	CCW 10,887	300	600	2,200	500
Tachometer-Generator	AND20005 Type XV-B (Modified)	Shorter Studs and Thread Lengths	CW 4,187	7	—	50	25
Propeller Governor	AND20010 Type XX-A (Modified)	Rpm, Stud Length, and Negative-Torque-System Supply Port	CW 3,754	125	188	825	125
Propeller Pitch Control	Mounting Pad Provided			None			30

CCW = Counterclockwise CW = Clockwise T_C = Continuous torque T_O = Torque overload T_S = Static torque



Honeywell Aerospace

1944 East Sky Harbor Circle
 Phoenix, AZ 85034

Domestic: 1-800-601-3099
 International: 1-602-365-3099
 www.honeywell.com

N61-0346-000-002
 March 2014
 © 2014 Honeywell International Inc.

