

Gunnar Heinsohn (5 August 2014)

**DID EUROPEAN CIVILIZATION COLLAPSE THREE TIMES WITHIN THE 1ST MILLENNIUM CE?
MULTIPLE ENIGMAS ARE MORE EASILY SOLVED THAN ONE¹**

Comments to “Trevor Palmer's response to Gunnar Heinsohn“, July 2014,
<http://www.q-mag.org/trevor-palmers-response-to-gunnar-heinsohn.html>.

I	FELLING ROME, BYZANTIUM, AND THEIR NEIGHBOURS TO THE NORTH AND EAST, ONE AT A TIME? [<i>SUMMARY TABLE p. 33</i>]	2
II	HIDDEN CONSPIRACY THEORIES IN MAINSTREAM HISTORIOGRAPHY	35
III	ANGLO-SAXON KINGS AS FASHION-OBSESSED CARNIVAL PRINCES?	37
	Address	44

¹ Thanks for editorial assistance go to Clark Whelton (New York).

I FELLING ROME, BYZANTIUM, AND THEIR NEIGHBOURS TO THE NORTH AND EAST, ONE AT A TIME?

Dear Trevor! You² eventually realize that I am not „suggesting that the historical sources transmitted to us were all forgeries“. Well taken, too, is your your explication why you have not addressed my articles on *q-mag* that are dealing not just with “a duplication of history but a triplication, with three supposedly separate 230-year periods running concurrently.“ However, I do not share your concern that dealing with all available sources as well as all three periods at the same time would become an “over-complicated“ endeavour. On the contrary. For me there can never be enough sources to scrutinize because I challenge dissidents (like followers of Illig or Fomenko) and mainstream scholars alike neither to deny as forgeries, nor to dismiss as inaccessible, the awkward or irrelevant contents of countless texts and archaeological items that can provide new insights -- once we repair what is now disfigured by hacking one block of information into several pieces distributed over many centuries. By gluing these pieces together again we may find solutions for 1st millennium enigmas that today are either considered as unsolvable or even as non-existent.

Let me demonstrate that idea by focusing on the greatest enigma of all: the fall of the Roman Empire. If we take its western part we see that something dramatic happened as early as the 230s. Elagabal (218-222) becomes the last emperor to reside on Palatine Hill. Trajan’s market – the commercial heart of the known world – was massively damaged and never repaired again. All eleven aqueducts were destroyed. The first was not repaired before 1453.³ If we move further north, the territory of Britain does not fare any better: “Parts [of London] had been cleared of buildings and were already covered by a horizon of dark silts (often described as `dark earth') suggesting that land was converted to arable and pastoral use or abandoned entirely. The dark earth may have started forming in the 3rd century.”⁴ If we turn south to Carthage the area is struck by a natural

² “Trevor Palmer's response to Gunnar Heinsohn“, <http://www.q-mag.org/trevor-palmers-response-to-gunnar-heinsohn.html>.

³ See E. Ernst, “Toppling Rome’s Obelisks and Aqueducts“, 2014, *q-mag*,

⁴ J. Schofield, “Saxon London in a tale of two cities”, *British Archaeology*, No. 44 [May], 1999 (<http://www.archaeologyuk.org/ba/ba44/ba44regs.html>).

17th c. Rome's Colosseum still surrounded by mud debris that reached heights from 8 m (Caracalla baths) up to 13 m (Large Argentina)

[Copper engraving by Joan Blaeu (1593-1673; author's collection.)]



Rome's Forum still under debris, and some 50 years before its identification in 1837 ff. Up to then the mud-filled area is known as *Campo Vaccino* (cattle run). [Copper engraving by Giovanni Battista Piranesi (1772-1778; author's collection.)]

[Copper engraving by Giovanni Battista Piranesi (1772-1778; author's collection.)]

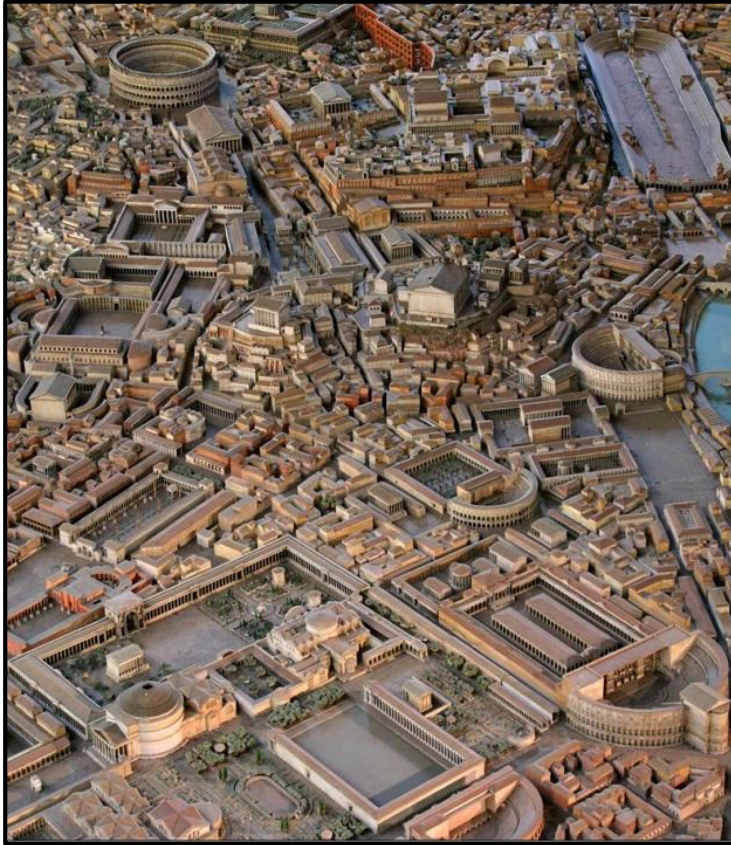


catastrophe and a plague from Pelusium, also known as the *Plague of Cyprian*: “Our Lord has foretold all this. / War and famine, earthquakes, and pestilence will occur everywhere.”⁵ Pontius of Carthage (Pontius the Deacan),

⁵ Cyprian, *On Mortality*, introduction / ch. I. (<http://www.ccel.org/ccel/schaff/anf05.iv.v.vii.html>).

**Downtown Rome between Pantheon and Colosseum
still intact in the 2nd/3rd century CE**

(Model in Rome's *Museo della Civiltà Romana*.)



**Downtown Rome in the 15th century, with many areas between the Pantheon and
the Colosseum still covered with mud from the 230s cataclysm.**

(View shown in Rome's *Museo della Civiltà Romana*).



Cyprian's 3rd c. biographer, adds: "There broke out a dreadful plague, and excessive destruction of a hateful disease invaded every house in succession of the trembling populace, carrying off day by day with abrupt attack numberless people."⁶

What could flatten sites from London to Carthage? It must have been immensely destructive. That is why mainstream experts on Roman history have developed a consensus that the so-called *Crisis of the Third Century* nearly led to a collapse of the Roman Empire. However, the consensus ends there. "Nearly" is never supposed to mean "entirely," as suggested by Geza Alföldy (1935-2011)⁷, who was, in his time at the University of Heidelberg, the uncontested dean of the classicists. After all, further east, e.g. in Byzantium, the empire not only gives the impression of carrying on but actually was strong enough to repeat in the 4th and 5th century many of the activities and features known from Rome of the 1st and 2nd c.: "In many important aspects the Roman Empire of the 4th c. did not differ from the 2nd century."⁸ Barbarian enemies were as easily kept at arms length – by even fighting the same tribes in the battlefields – in the 4th c. as it had been done 300 years earlier: "In the fourth century the struggle was still a hopelessly unequal one. The barbarians north of the Rhine-Danube line [...] could hardly, even in concerted action have contemplated the conquest of the Empire."⁹

With a large chunk of the empire as vital in the 4th/5th c. as the entire empire had been in the 1st/2nd c., it is indeed a far cry from an empire annihilated in its entirety. Therefore the destructions of the 230s in the city of Rome are seen as something terrible but completely disconnected from the fall of the Roman Empire in the 6th c CE.

⁶ Pontius of Carthage, *Life of Cyprian*, ch. 9 (online [in German]: <http://www.unifr.ch/bkv/buch.php?werknr=77%20target=>).

⁷ G. Alföldy, *Die Krise des römischen Reiches: Geschichte, Geschichtsschreibung und Geschichtsbetrachtung. Ausgewählte Beiträge*, Stuttgart: Steiner, 1989.

⁸ C. Witschel, *Krise, Rezession, Stagnation? Der Westen des römischen Reiches im 3. Jahrhundert n. Chr.*, Hennef: Marthe Clauss, 1999, p. 377 („Das römische Reich sah also im 4. Jh. an nicht wenigen Punkten anders aus als im 2. Jh.“).

⁹ G. Halsall, *Barbarian Migrations and the Roman West, 376-568*, Cambridge: Cambridge University Press, 2007, p. 161.

How, Trevor, did I try to get an idea of the extent of the 3rd c. destructions from London to Carthage? Because we want to know what has been felt by those cities of the empire that safely sailed through the 230s conflagration, I started with the geological assumption that such a tremendous hit must, at least, have left minor traces in, e.g., Byzantium, too. After all, as the crow flies, it is 1827 km from London to Carthage but only 1377 km from Rome to Byzantium. I was surprised to learn that no catastrophic scars have been found Byzantium's 3rd c. strata. Thus, it appears as if indeed the eastern part of the empire had survived completely intact.

Yet, was there really a geological miracle at work that struck the West with pinpoint precision, thus saving Byzantium in the East? Not really, because the reason for the absence of catastrophic scars in Byzantium's 230s was the stunning absence of the entire 1-230s period in Byzantium's archaeological record. There are simply no strata whatsoever in Byzantium for the very time in which one could check for the fallout of the 230s London-to-Carthage-conflagration. Instead of providing us with some hints for a better understanding of Rome's 230s calamity, Byzantium burdens us with only more enigmas, i.e. with missing 1st-3rd strata, ports, and walls. Moreover, Byzantium's catastrophe in the 520s asks for a convincing explication, too. On this, Rome fails us because, on top of its 230s destructions, it does not show an additional destruction layer caused by Byzantium's 6th c. shock. We are now dealing with two surgical pinpoint strikes, one hitting the west in the 230s and another hitting the east in the 520s.

Yet, these multiple enigmas may be easier to explain once stratigraphy is called upon. Byzantium's lowest (earliest) stratum for the 1st millennium CE, reasonably expected to start with year 1 CE, actually begins in the 4th c. CE (roundly speaking, year one in Byzantium starts in 301). Yet, Byzantium's 4th c. surprises with all the urban characteristics so typical for 1st c. metropolises with a palace directly attached to a circus (usually 300/400 m *versus* some 600 m in Rome).

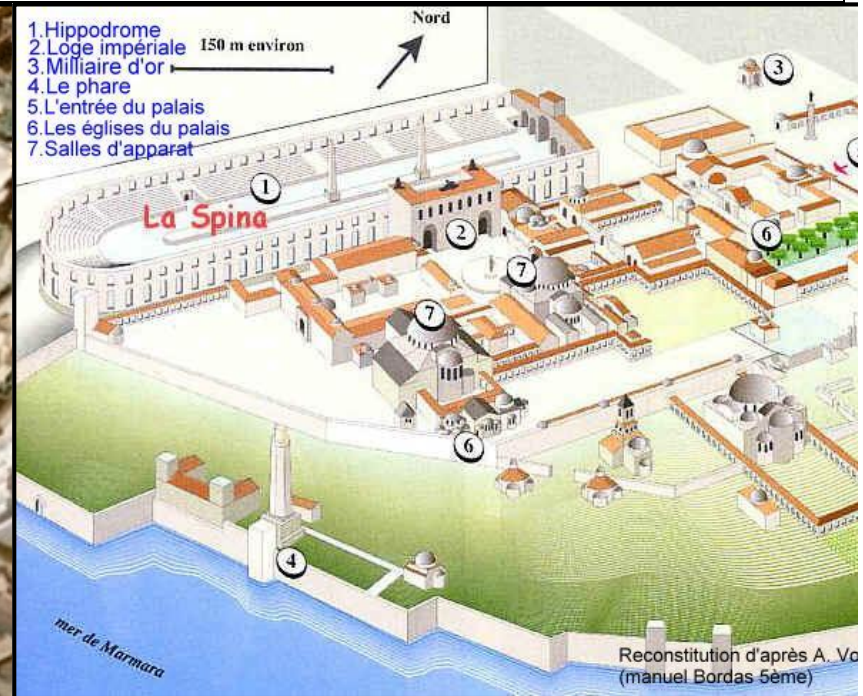
Even more of a surprise for the 2nd c., when there are no strata at Byzantium, is provided by its naval harbour that could, according to Cassius Dio (163-229), muster up to 500 ram-armoured galleys. No trace of that harbour, second to none in the *Imperium*

**Rome's imperial palace (Palatine Hill) with Circus Maximus
(early 1st c. CE).**

(<http://www.messala.de/circusanlagen.htm>)



**Byzantium's imperial palace with circus (early 4th
c. CE; <http://www.byzantinisches-reich.eu/forum/thread.php?threadid=5486&sid=79b0f7b02c83a08e082847e53c2824bb>).**



Romanum, has ever been located. Yet, Byzantium's even greater archaeological enigma is the "absence of any traces whatsoever"¹⁰ of its gigantic 2nd c. walls. They were built in the first third of the 2nd c. CE (possibly in the time of Hadrian [117-138] or Antoninus Pius [138-161]). They had been surmounted for the first time by the army of Septimus Severus (193-211) in 195/196 CE. Yet, the conqueror made all possible efforts to repair the damage suffered by the city and its walls. In the beginning

¹⁰ Dickemauern, "Byzantinische Landmauer", <http://www.dickemauern.de/byzanz/genyborg.htm> **tinische Landmauer** / Istanbul – Türkei, 2009 (keinerlei „Spuren mehr vorhanden sind“).

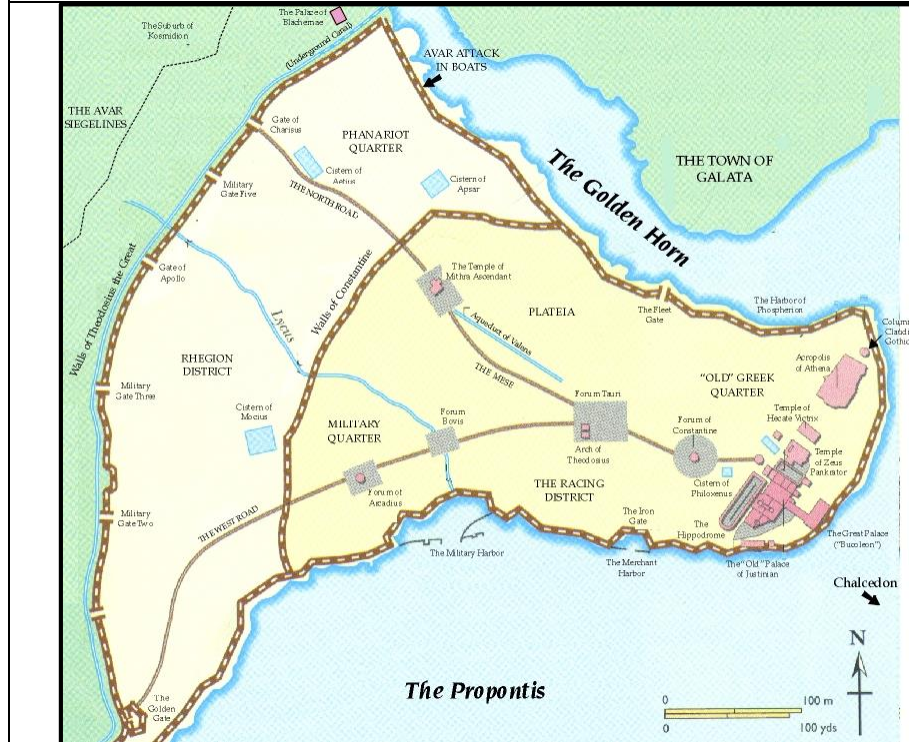
of the 3rd c., therefore, Byzantium had been as magnificent as before. Still, not even a single foundation stone of the walls and the majestic urbanism have ever been found. Yet, some 300 years later, a city wall is built in Byzantium under Theodosius II (401-450), starting in 412 or 413. These 5th c. walls resemble the description given by Cassius Dio for the walls erected in the early 2nd c. CE.

Since Byzantium's 1st millennium stratigraphy does not begin in 1 CE but around 301 CE (with 1-300 non-existent), the walls of Theodosius that have been built some 130 years into Byzantium's 1st millennium, i.e., in the time span where Cassius Dio dates the walls that have been attacked and repaired by Septimus Severus at the end of the 2nd c. CE, are the missing walls (130s=420s). In my parallelisation of western and eastern rulers, Theodosius belongs to the period of Hadrian and Antoninus Pius.¹¹ Thus, I claim, Byzantium's huge but missing 2nd c. walls are not missing at all but have been found in Theodosius' walls of the early 5th c. CE. The walls (324 ff. CE) of Constantine the Great (preceding Theodosius's walls by some 100 years), thus, belong to the early 1st c., since Constantine's 4th c. is (with 1-300 CE absent) Byzantium's first strata-proven century in the entire 1st millennium CE.

Byzantium's walls in textbook dates (left), and in stratigraphy-based dates (right)		
230s=520s=930s catastrophe leaves major sections of the wall intact.		
413 ff. CE	Walls of Theodosius II is identical with the as yet missing wall of the early 2 nd c. conquered and repaired by Septimus Severus after 196 CE.	(Septimus-Severus-repairs after 196) Early 2nd c.
324 ff. CE	Walls of Constantine the Great.	Early 1st c.
Byzantium's Walls		

¹¹ Cf. the overview on pp. 5-6 in my answer to Palmer's first critique of my approach: http://www.q-mag.org/_media/palmer-heinsohn-answer-22-06-14-roman-empire-8th-10th-century.pdf.

Walls of Constantine the Great (inner walls; stratigraphically early 1st instead of early 4th c.), and Theodosius' (outer) walls as the missing 2nd c. walls (i.e., early 2nd instead of early 5th c.)
[\[http://www.throneworld.com/oathofempire/geographica/constantinople.jpg\]](http://www.throneworld.com/oathofempire/geographica/constantinople.jpg)






Section of Byzantium's supposedly missing 2nd c. walls that stratigraphically are identical with Theodosius' walls (early 2nd instead of early 5th c.)
[\[http://messala.de/landmauer-konstantinopel.htm\]](http://messala.de/landmauer-konstantinopel.htm)



To sum up, Byzantium's famous 5th c. port of Theodosius must, stratigraphically, be the same as the splendid port described by Cassius Dio for the 2nd c. CE. Other than Byzantium's walls its port has been catastrophically buried under land where it remained hidden up to 2004 when construction work at Yenikapi revealed its location in an horizon from 1m below to 3m above sea

level.¹² Thirty-seven ships – the largest collection of war galleys, sea-going traders, and small or local trading vessels ever found – were uncovered. They bewilder excavators for having transported items dating from the 4th-5th/6th but also from the 9th/10th centuries CE. Yet, there is no stratigraphy with 5th/6th c. ships under a layer of sediment deep down with 9th/10th c. ships

Location of Theodosius-Port on the Sea of Marmara before burial (reconstruction) http://en.wikipedia.org/wiki/Constantinople .	Theodosius-Port before cataclysmic burial (reconstruction) http://www.allempires.com/forum/forum_posts.asp?TID=27406&PN=2 ..	Theodosius-Port (found 2004 under downtown Istanbul) http://blog.iae.org.tr/index.php/yayinlar/istanbul-arastirmalari-yilligi/?lang=en .
		

¹² Istanbul Archaeological Museums, ed., *Yenikapi Excavations*, http://www.istanbularkeoloji.gov.tr/web/32-238-1-1/muze_-_en/museum/announcements/yenikapi_excavations

further up although the Yenikapi site is otherwise well stratified back to the Neolithic. The 4th-10th c. do not cover some seven centuries but just one (5th/6th=2nd/3rd) because they share the same stratigraphical horizon.

Tsunami line of cataclysm in Port of Theodosius

(<http://lynxx-blog.blogspot.de/2012/01/konstantinopels-versunkener-hafen.html>)

Theodosius Port ships buried with their wares that are dated 5th/6th but also 9th/10th c. although they come from the same stratigraphical horizon

(http://www.istanbularkeoloji.gov.tr/web/32-238-1-1/muze_-_en/museum/announcements/yenikapi_excavations).



Now that I have argued that Rome's 1st c. and Byzantium's 4th c. share the same stratigraphical horizon, we can ask if some 230 years into Byzantium's chronology, i.e. in the 6th c., that city had suffered calamities similar to Rome's some 230 years into that city's 1st millennium, i.e. in the early 3rd c. CE. After all, we still have not settled the perennial controversy: did Rome's 3rd c. fate merely indicate a geographically well-contained *Crisis of the Third Century* (from London to Carthage) or did it, indeed, indicate the fate of the entire Roman Empire? To come closer to a solution we must – and this has never been done for 1st millennium historiography – call upon sources that are (by mainstreamers and dissidents alike) regarded as completely out of context and, therefore, totally irrelevant for a better understanding of the scope of Rome's fall in the so-called *Crisis of the Third Century*.

Procopius (500-565), John of Ephesus (507-588), and Evagrius Scholasticus (6th c.) all write about a lethal plague, in the time range of the 520s/540s, coming, like Cyprian's Plague came some 300 years earlier, out of Egypt's Pelusium. Like the former plague, it is considered as one of the deadliest in known history. Procopius did not see it restricted to Byzantium / Constantinople but thought it had a global dimension, with some 10,000 people dying daily in Justinian's (482-565) capital alone.¹³ Yet, our 6th c. sources contain evidence not available in the preserved 3rd c. text of in Cyprian's. What is called "Justinian's Comet" could have played a prominent role. If, as some believe, a chunk of Halley's comet had slammed into the earth¹⁴ or some other cosmic action had been the culprit, is of secondary importance. In any case, the cosmic context is corroborated by Allah's burning elephant stones that, according to the Quran (Sura 105), had been hurled, in the early 6th c., against an ally of Justinian operating in what is today Saudi-Arabia.

By resorting to sources that are dated some 300 years apart but which deal with events taking place in the same stratigraphical horizon, our first riddle (why does not the entire Roman Empire fall in the 3rd c.) can be employed to solve our second riddle (Byzantium's lack of catastrophic scars in the the 3rd c.). By understanding that Byzantium's massive catastrophic scars, now

¹³ Procopius, *Persian War*, II:22–23.

¹⁴ M. Wall, "Why Halley's Comet May Be Linked to Famine 1,500 Years Ago", *livescience*, December 18, 2013 (<http://www.livescience.com/42048-halleys-comet-linked-to-ancient-famine.html>).

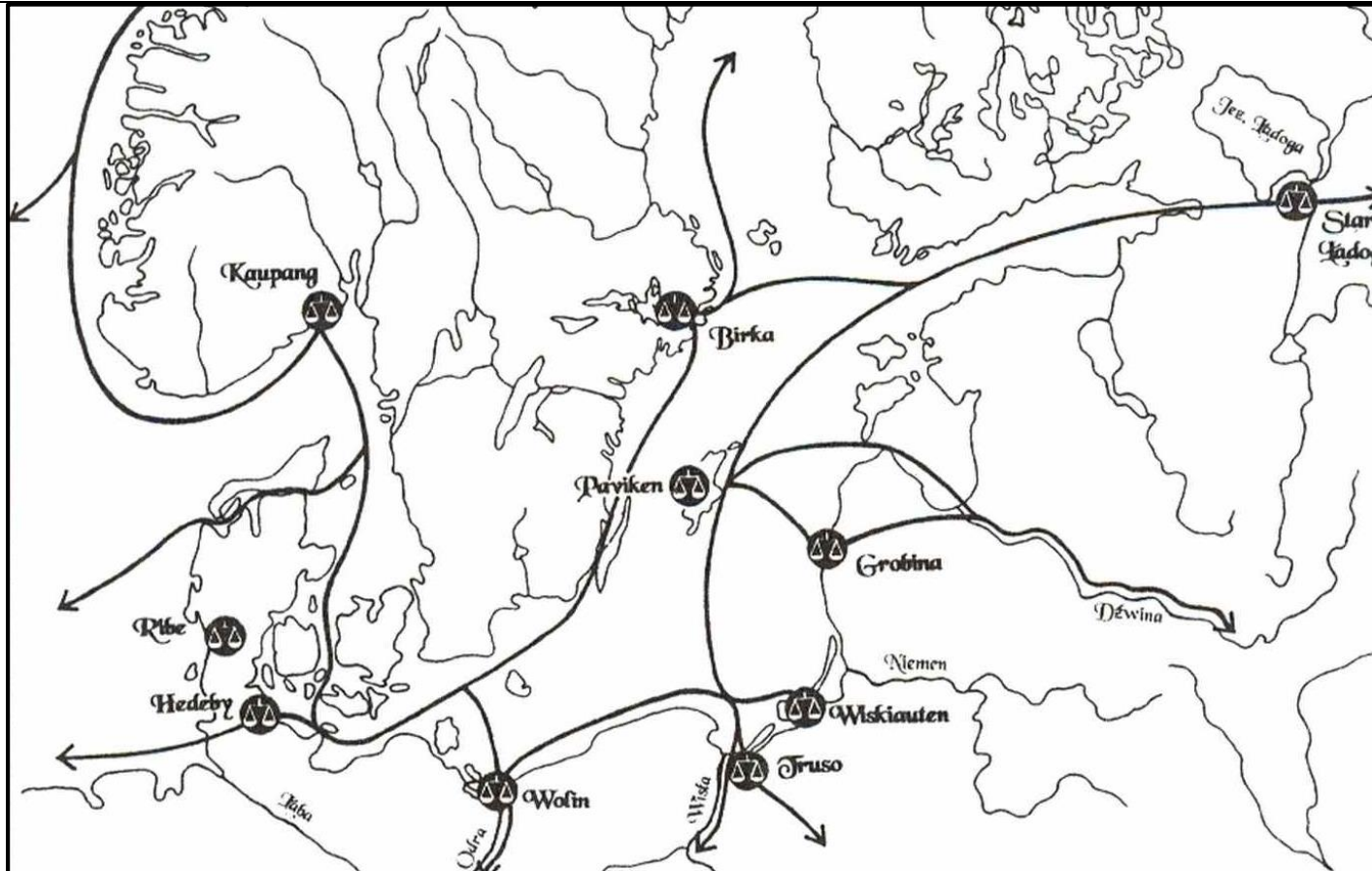
dated to the 6th c., are found in the same stratigraphical level as Rome's 3rd c. destructions, we understand that Rome and Byzantium fell together. To make this statement more easily comprehensible, the following overview may be of help:

CHRONOLOGY OF THE FALL OF THE ROMAN EMPIRE some 300 years apart		
STRATIGRAPHY all in one horizon OF THE FALL OF THE ROMAN EMPIRE	ROME: 3RD C. CE CATAclysm Same stratigraphical horizon as Byzantium. -Written catastrophe-sources -real destructions -Pelusian plague + depopulation -Cyprian's earthquakes	BYZANTIUM: 6TH C. CE CATAclysm Same stratigraphical horizon as Rome; no strata 1-230s. -Written catastrophe-sources -real destructions -Pelusian plague + depopulation -Justinian's Comet + Allah's Elephant Stones

Not so fast, I hear Trevor say. It may be true that Western and Eastern European high civilization had only one parallel run of some 230 years within the 1st millennium CE (1-230s=290-520s). But, you may ask, what about the territories to the North, to the North-East, to the East and to the Southeast of the empire. What could strike the *Imperium Romanum* should have had some fallout in these regions, too. What about the major towns of Scandinavia, Slavic lands, and Mesopotamia? After all, they were not wiped out in the 3rd or in the 6th c. but not before the 10th c. CE. Have their stratigraphies been checked for cataclysmic traces in the 3rd and/or 6th c. CE? Maybe they can prove that, indeed, there have been three collapses of civilization within the 1st millennium CE.

These areas have been checked. But let me first confirm that, indeed, widespread destructions from Norway to Iraq are dated to the 920s/930s and not to the 230s or 520s. We have quite precise dates now for several Slavic nations. Slovakia suffered major

8th-10th c. Viking port-towns coming to an **enigmatic end around the 10th c. CE.** when they disappear under mud, dark earth etc. (http://prusowie.pl/mapy/3_mapy-en.php).



“destructions” at the “beginning of the 10th century.”¹⁵ None of the available sources names any enemies or other causes that may have inflicted that disaster. At the same time, in the Czech Republic, “castles of regional chieftains were destroyed. [...]

That phenomenon is not at all mentioned in the written sources.” Like in the neighbouring countries, “archaeological sources [...] prove that Christianisation and state control belonged to the period of the 10th through 13th centuries”¹⁶ but not earlier.

Poland, too, was hit in the early 10th century: “There was a rapid, sometimes catastrophic, collapse of many of the pre-existing tribal centers. These events were accompanied by the permanent or temporary depopulation of former areas of settlement. Within a short time new centers representative of the Piast state arose on new sites, thus beginning [in 966] the thousand-year history of the Polish nation and state.”¹⁷ In the future Piast realm “the local traditional territorial structure was undergoing deep and dramatic changes. Actions which resulted in the abandonment of some of the old strongholds and the building in their place of new ones were associated irrevocably with mass population movement, [...] the emergence of new forms and zones of settlement.”¹⁸

Like the conflagrations in Slovak and Czech territories have left no traces in the written sources so the texts pertaining to Poland and the Baltic coast remain completely silent about the forces that had the power to devastate such huge territories. Yet,

¹⁵H. Chorvátová, “Untergang und Neuanfang: Zur Christianisierung im Einflussbereich des frühmittelalterlichen mährischen Fürstentums auf dem Gebiet der heutigen Slowakei anhand archäologischer Quellen“, in Heinrich-Tamáska, O., Krohn, N., Ristow, S., ed., *Christianisierung Europas: Entstehung, Entwicklung und Konsolidierung im archäologischen Befund / Christianisation of Europe: Archaeological Evidence for it's creation, development and consolidation. Internationale Tagung im Dezember 2010 in Bergisch Gladbach*, Regensburg: Schell & Steiner, 2012, pp.239-260 / p. 249; see also p. 259.

¹⁶P. Sommer, “Der frühe böhmische Staat und die Christianisierung seiner Gesellschaft“, in Heinrich-Tamáska, O., Krohn, N., Ristow, S., eds., *Christianisierung Europas: Entstehung, Entwicklung und Konsolidierung im archäologischen Befund / Christianisation of Europe: Archaeological Evidence for it's creation, development and consolidation. Internationale Tagung im Dezember 2010 in Bergisch Gladbach*, Regensburg: Schell & Steiner, 2012, pp.261-273 / pp. 266 / 273.

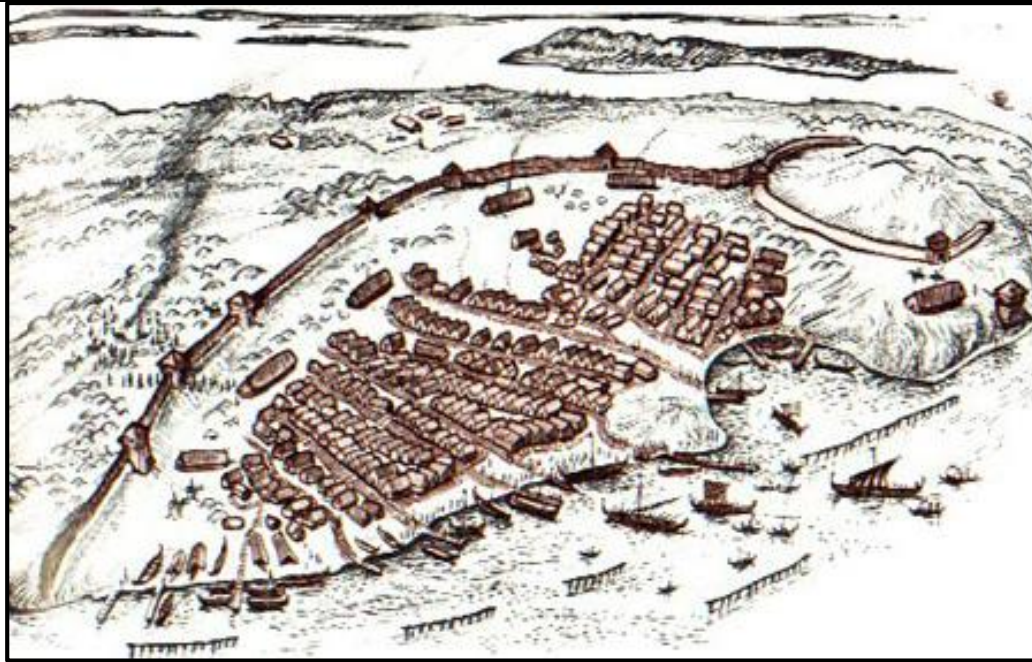
¹⁷A. Buko, *Archeologia Polski. Wczesnosredniowiecznej: Odkrycia – hipotezy – interpretacje*, Warszawa: Wydawnictwo TRIO, 2011, p. 464.

¹⁸A. Buko, “Ośrodki centralne a problem najstarszego *Patrymonium* dynastii Piastów“, *Archeologia Polski*, vol.. LVII, 2012, no. 1–2, 133-159 / 157 ff.

Birka/Sweden (beginning in the 8th c. and deserted in the 10th c.)

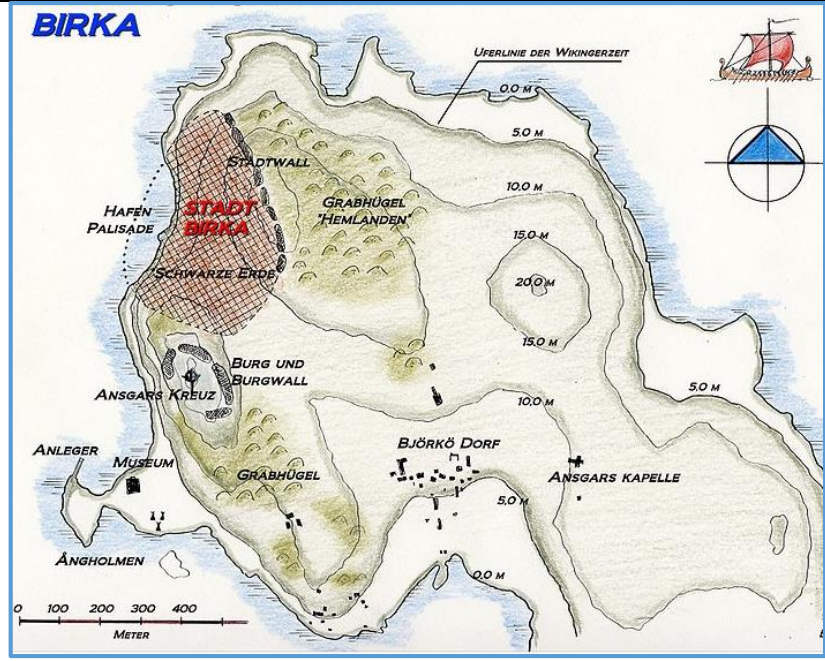
Birka in its early 10th c. developmental stage with ports and breakwaters wiped out in the 930s conflagration.

(<http://www.clas.ufl.edu/users/fcurta/Altimiris.html>)



Birka deserted for good (10th c.) under dark earth (“Schwarze Erde”).

(http://en.wikipedia.org/wiki/File:Birka_Karte_2008.jpg)



archaeology confirms that Southern Baltic ports “experience discontinuity”¹⁹ in the 10th c. CE. The indigenous names for some of the deserted ports are not known to this very day. Therefore, it would be difficult to deny that we are facing here another enigma not just of European but of global dimensions because the disaster zone is much bigger still. With Kaupang (Norway) and Truso (Poland), two Viking port-towns are buried under mud that are more than 800 km apart as the crow flies.²⁰ As for Slavic territories, again, there are no sources that could tell us what gruesome fate had befallen the Viking territories. Yet, archaeology reveals dark earth covering many sites. I have already mentioned a few of them in my earlier *q-mag*-texts. Here I add Birka, Sweden’s oldest town.

My research did not detect a single Scandinavian or Slavic site that showed, beneath the non-controversial 10th c. annihilations, a 6th c. destruction layer, and/or, even further down in the stratigraphy, a 3rd c. destruction layer. Thus, it may appear as if Rome’s northern and eastern neighbours remained unscathed when the rest of the Empire had fallen for good. Yet, was there really the kind of surgical geological miracle at work that we already had to dismiss for Rome and Byzantium? Not at all, because the reason, in these vast territories, for the absence of three super-imposed levels with catastrophic scars, is the absence of any site that has more than some 300 years of building strata for the 1000 years of the 1st millennium CE. One may have sites that, like Rome, blossom from the 1st-3rd c. CE to disappear for good up to the 10th/11th century or later. Poland’s Wielbark sites (probably Gothic settlements) belong to them. One may have, like Byzantium, 4th-6th c. sites with no building levels for 1st-3rd, and 7th/8th-10th centuries.²¹ One may find sites, like Norway’s Kaupang, Sweden’s Birka or Poland’s Truso, with 7th/8th-10th c. building

¹⁹ S. Kleingärtner, *Die frühe Phase der Urbanisierung an der südlichen Ostseeküste im ersten nachchristlichen Jahrtausend*, Neumünster: Wachholtz (Studien zur Siedlungsgeschichte und Archäologie der Ostseegebiete, Band 13), 2014, p. 249. („dass die frühe Phase der Urbanisierung an der südlichen Ostseeküste durch einen diskontinuierlichen Verlauf gekennzeichnet ist.)

²⁰ See examples of buried Viking towns in G. Heinsohn, “Why Did Christianity Spread So Slowly Across Europe In The First Millennium A.D.?” p. 13; http://www.q-mag.org/_media/gunnar-slow-n-christianization-01022014.pdf.

²¹ See for Scandinavia the peculiar way of archaeologists to distribute a mere 300 years of several individual sites over the entire millennium to give the impression of a sequence with a full thousand years for the entire area in G. Heinsohn, “Vikings for 700 Years without Sails, Ports, and Towns?“, http://www.q-mag.org/_media/heinsohn-viking-pdf-062014.pdf, p. 17.

strata but nothing to show for some 700 years all the way back to the 1st c. CE. Yet, in sites of all three chronological versions (1st-3rd; 4th-6th; 8th-10th centuries) you may find 1st-3rd c. Roman coins.²²

Typical 1st millennium CE sites in Scandinavia, Eastern Europe and Mesopotamia that either have 1st-3rd or 8th-10th c. building strata with the latter exhibiting typical 1st-3rd c. hard evidence (architecture, painting, coinage etc.), too.	
Examples: <i>Venta Belgarum</i> (Winchester), <i>Camulodunum</i> (Colchester)	Examples: Kaupang, Birka, Truso, Samarra.
Hiatus 4th – 10th c. CE	Sites with building strata for the 8th – 10th c. CE with 1st-3rd c. CE Roman coins but also 4 th -6 th c. Roman coins.
Sites with building strata for the 1st-3rd c. CE with 1st-3rd c. CE but also 4 th -6 th c. Roman coins (from graves etc.).	Hiatus 1st – 7th c. CE

For, e.g., an 8th-10th c. hillfort in Poland's Sopot²³ with 2nd c. coins from Traian and Hadrian, the explanation goes that the locals somehow have been lucky to obtain these 700 year old pieces, and, then, decided to use them as currency because their own period/region had been unable to issue money. However, that very period is rich with Anglo-Saxon, Carolingian or Abbasid Arab coins. All these civilizations, supposedly, had been incapable of minting during the first 700 years of the 1st c.²⁴ but were

²² In Truso, e.g., we have coins from Antoninus Pius (138-161) and Commodus (180-192) in the 9th c. level. See M. Bogucki, "Antique, medieval and modern coin finds from Janów Pomorski", in Bogucki, M., Jurkiewicz, B., Hg., *Janów Pomorski. Stan. 1: Wyniki ratowniczych badan archeologicznych w latach 2007-2008 / Archaeological Rescue Excavations in 2007-2008*, vol. 1:3, Muzeum Archeologiczno-Historyczne w Elblagu, 2012, pp. 62-63 / 62.

²³ Cf. "Grodzisko w Sopotcie", <http://www.archeologia.pl/grodziskosopot/grodzisko.html>.

²⁴ See already G. Heinsohn, "Islam's Chronology: Were Arabs Really Ignorant of Coinage and Writing for 700 Years?“, *q-mag* [Quantavolution Magazine], 2013, http://www.q-mag.org/_media/gunnar-islam-and-arab-chronology-heinsohn-21-11-2013.pdf.

able to master that sophisticated art instantly and perfectly in the 8th c. CE. Even more of a mystery, whilst coin-inspiring Rome was shrouded in darkness, Anglo-Saxon rulers, like Coenvulf (796-821) or Alfred the Great (871-898) easily managed to retrieve Roman coin-imagery with diadem and chlamys some 700 years on. Archaeology confirms that Southern Baltic ports “experience discontinuity”²⁵ in the 10th c. CE. The indigenous names for some of the deserted ports are not known to this very day. Therefore, it would be difficult to deny that we are facing here another conflagration of enormous proportions.

Okay, Trevor may be saying. Even if the 230s destructions of Rome, the 520s destructions of Byzantium as well as the 930s destructions of Scandinavia, the Baltics and the northern Slavic realm are found in the same stratigraphical horizon, that may not be true for Mesopotamia. Therefore, let us turn to the 8th-10th c. Arab realm whose – mostly Abbasid – coins are found abundantly in Viking towns from Scandinavia to Poland (Truso) together with 1st-3rd as well as 4th-6th c. Roman coins.

The Arab regions present us with mysteries no less mind-boggling than the sites of Europe’s northeast. Their 1st millennium sites are equipped with strata for only some 300 years. They may belong to the millennium’s first three centuries that are followed by a 700 year lacuna (4th-10th c.), or they may belong to the 8th-10th c. period that are preceded, like in Kaupang or Truso, by a lacuna of some 700 years (1-700 CE).

Therefore, there is no site that could be checked for scars of three consecutive catastrophes in super-imposed strata of the 3rd, 6th, and 10th c. CE. Yet, lethal catastrophic scars (usually in the form of suffocating sand covers) do exist – either in the 3rd or in the 10th c. CE. The most famous example of the first type is, of course, provided by Mada’in Salih, the metropolis of the Arab Nabataens (more than 2,000 sites identified). After the 1st-3rd c. period Mada’in Salih is forgotten for some 700 years until in the

²⁵ S. Kleingärtner, *Die frühe Phase der Urbanisierung an der südlichen Ostseeküste im ersten nachchristlichen Jahrtausend*, Neumünster: Wachholtz (Studien zur Siedlungsgeschichte und Archäologie der Ostseegebiete, Band 13), 2014, p. 249. („dass die frühe Phase der Urbanisierung an der südlichen Ostsee Küste durch einen diskontinuierlichen Verlauf gekennzeichnet ist.)

Nabataean Mada'in Salih (Hijr) in today's Saudi-Arabia (located to the left of the cipher) where Marcus Aurelius (161-180) commissioned repairs in the years 175-177 CE.
 (<http://www.tageo.com/index-e-sa-v-00-d-m4369806.htm>).



Two Mada'in rock tombs (out of 131) from the 1st/2nd c. CE.

(<http://www.amusingplanet.com/2012/10/pre-islamic-civilization-of-madain.html>)



late 10th c. CE a geographer, Al-Maqdasi (946-1000), passed the impoverished site.

Chronology of Nabataean metropolis, Mada'in Salih (in Al Hijr/Hegra) with 1 st -3 rd c. building strata followed by a 700 YEAR HIATUS in the 1 st millennium CE. ²⁶ [Horizontal lines indicate same stratigraphical horizon [against textbook-dates]. Evidence in red.			
10 th c.	Geographer Al-Maqdasi (946-1000) reports evidence of a small oasis at Mada'in Salih.		10 th c.
Sources of Antiquity ("1 st -3 rd c.")		Sources of Late Antiquity ("4 th -6 th c.")	
6 th – 9 th c.	No evidence	No evidence	9 th c.
5 th c.	No evidence	No evidence	8 th c.
4 th c.	No evidence	No evidence	7 th c.
Late 3 rd c.	No evidence	No evidence	Late 6 th c.
Early 3rd c. CE: Annihilation of Mada'in Salih			
2 th c.	Evidence: Repairs (175-177) according to inscription under Marcus Aurelius (161-180). 106: Part of Imperium Romanum	No evidence	5 th c.
1 st c.	Splendid evidence (131 rock tombs) of Nabataean city.	Evidence: Mentioned in "356" CE.	4 th c.

²⁶ See <http://whc.unesco.org/en/list/1293>.

What about 8th c. Umayyad sites? They surprise us for having nothing to show from the 1st to 8th c. when they resort to up to 700 year older models of Roman architecture: “In many cases Byzantine [4th-6th c.] or even Roman [1st-3rd c.] buildings were simply taken over with little or no modification.”²⁷ In painting Umayyads return to late Hellenistic styles from the end of the 1st c. BCE:

”The most famous feature **of Quseir 'Amra** [80 km east of Amman under Caliph al-Walid I (705-715 CE)] are, however, the frescoes paintings. [...] The paintings, which covered much of the walls and ceilings, are the most extensive frescoes to survive from any secular building before the Romanesque period (c. 1000-1300 CE). The paintings deal with a wide range of topics. In the reception hall there are hunting scenes, nude or sheerly-dressed women and active athletes. [...] The personification of poetry, history and philosophy can also be seen. A unique painting embellishing the hot room of the bath complex represents the constellation of the Northern Hemisphere accompanied by the signs of the Zodiac, the Great Bear (‘Ursa Major’), and Little Bear (‘Ursa Minor’). The best-known painting is the "Painting of the Six Kings" at the southern end of the west wall. [...] **Ancient Greek influence in many of these paintings can be recognized** in their subject matter and in the fact that some even bear Greek inscriptions. [...] What we see is an **'indigenous Hellenism that is local, not alien.'**”²⁸

When we move from Jordan to Syria’s Damascus, we witness a similar regression of some 700 years. The Umayyad mosque was supposedly built in 706-715 CE after preceding buildings had been removed. The mosque, it is believed, had replaced a temple for Haddad-Ramman that, in 64 CE, had been turned into a Jupiter temple. That Hellenistic building of the late 1st c. BCE was, we are told, under Theodosius I. (347-395), transformed into a basilica devoted to John the Baptist sheltering his severed head as its most sacred reliquia. It is not understood why it took more than 300 years to honor, in the time of Constantius II (317-361), the holy man. Moreover, it is difficult to verify the basilica’s demolition because the entire carcass of the mosque is identical

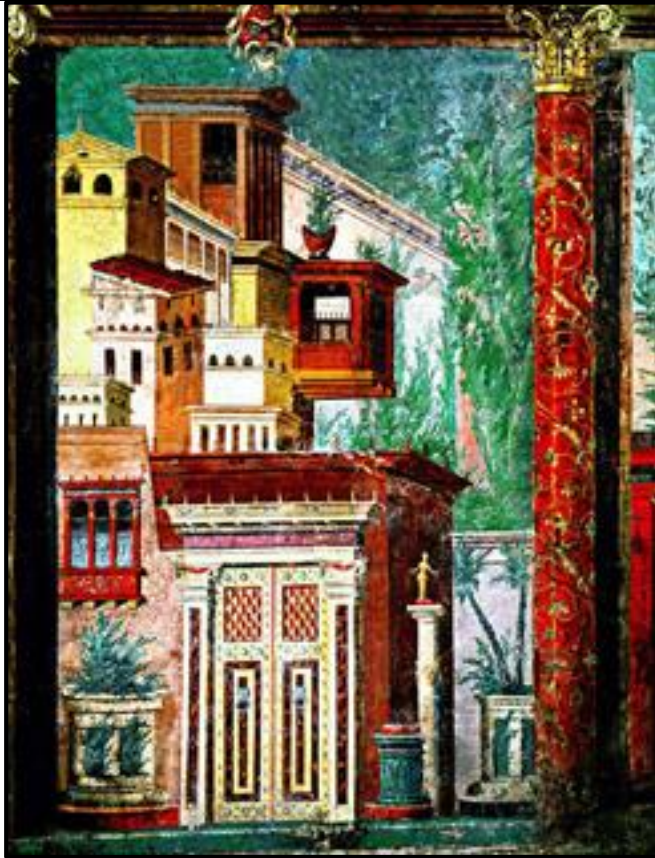
²⁷ A. Petersen, *Dictionary of Islamic Architecture*, London & New York: Routledge, 1996, p. 295.

²⁸ J. Wiener, “INTERVIEW: The Striking Design of Qusier ‘Amra“, in *Ancient History Encyclopedia*, 19 November 2012, <http://blog.ancient.eu.com/2012/11/19/interview-the-striking-design-of-qusier-amra/> (bold letters; GH).

with the 1st c. BCE/CE temple. On the Southern wall, a few meters above ground, Greek ornaments as well as an antique relief are visible to this very day. Moreover, the mosque exhibits mosaics whose style and execution do not

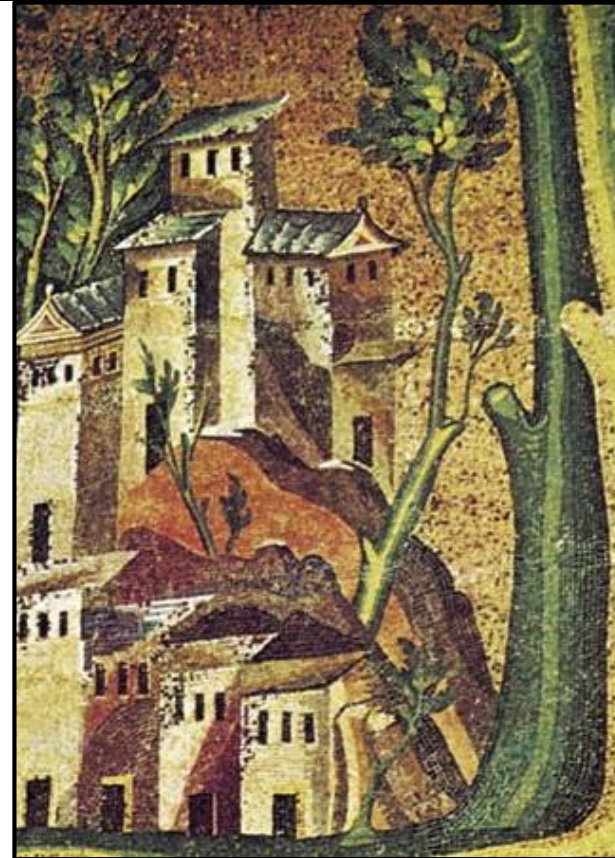
1st c. fresco from Villa Arianna in Boscoreale

(<http://www.thecultureconcept.com/circle/wp-content/uploads/2012/07/Fresco-from-Boscoreale.jpg>.)



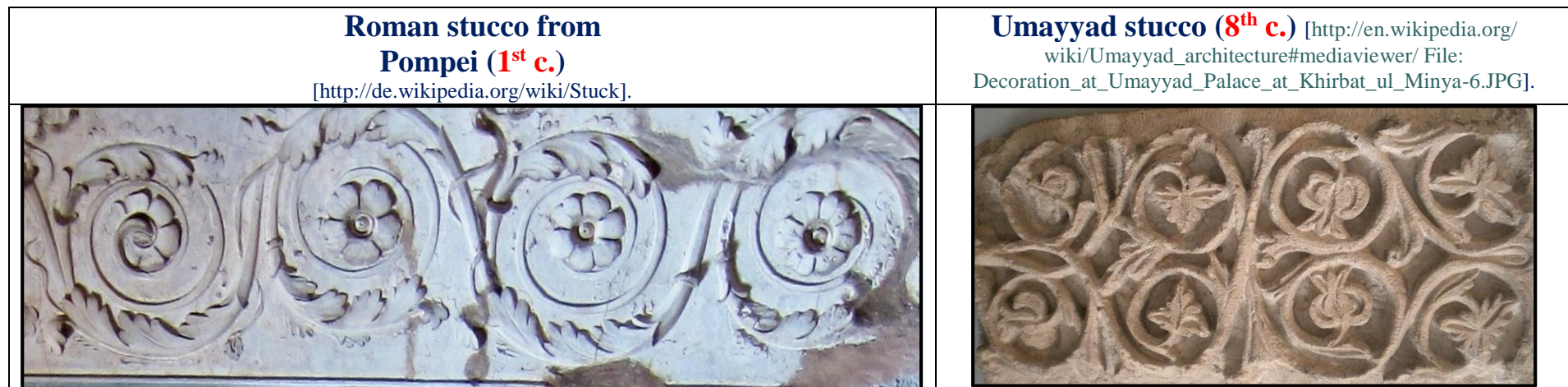
Mosaic of the Umayyad mosque (Damascus; early 8th c. CE)

(<http://southbankmosaics.files.wordpress.com/2010/01/damascus-mosaic.jpg>.)



look 8th c. but resemble 700 year older frescoes from the 1st c. CE:

“The architectural elements of the Damascus mosque as well as the way they are grouped can be derived from Roman-Hellenistic sources from late antiquity. [...] Even the famous frescoes resort to antique motifs. [...] The iconography of their phantasy architectures with exedras and canopies between bucolic assembles and high trees shows parallels with the motifs on the [1st c.] frescoes in Pompei and Boscoreale.”²⁹ “By depicting vine tendrils, Corinthian acanthus scrolls, gemmed vases and even fantastic Pompeian-like Roman palaces they ensured the survival of such [700 year older] motifs in Islam’s nascent art.”³⁰



Another miracle the Umayyads appear to have performed in the sophisticated art of stucco (see preceding page). Roman stuccowork, like its Hellenistic predecessor (up to the 1st c. BCE), employed white lime-plaster. That material was also used at

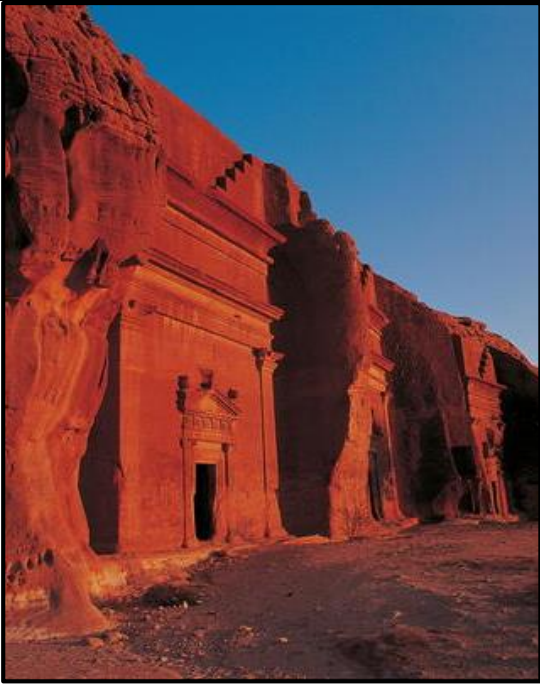
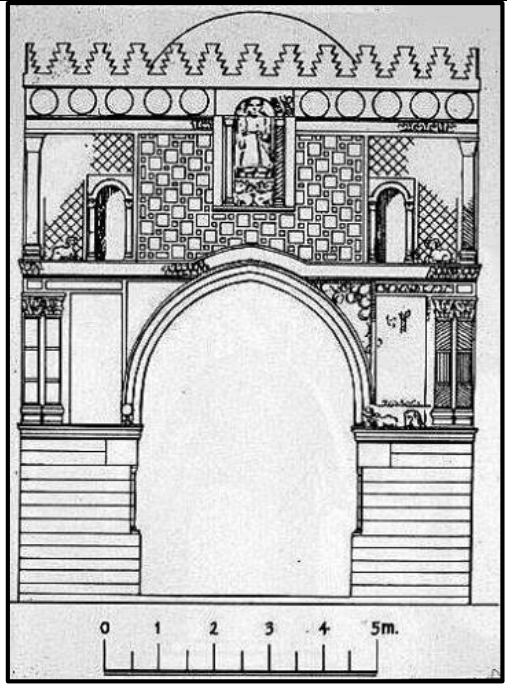

²⁹ S. Trinks, „Oviedo und Aachen: Gebaute Macht der Asturier und Franken“, in Stiftung Deutsches Historisches Museum, Hg., *Kaiser und Kalifen: Karl der Große und die Mächte am Mittelmeer um 800*, Darmstadt: WBG - Philipp von Zabern, 2014, pp. 290-309 / 264 f.

(„Damaskus können die Elemente der Architektur und die Art ihrer Gruppierung aus spätantiken, römisch-hellenistischen Quellen hergeleitet werden [...] Einen Rückgriff auf antike Motive / [bei ihren] berühmten Wandmosaikern. [...] Die Ikonografie ihrer fantastischen Architekturen mit Exedren und Baldachinen zwischen ländlich anmutenden Häusergruppen und hohen Bäumen weist einige Übereinstimmung mit den Motiven von Wandmalereien in Pompeji und Boscoreale auf“.)

³⁰ M. Barry, *Design and Colour in Islamic Architecture: Eight Centuries of the Tile-Maker’s Art*, New York & Paris: Vendome, pp. 255 f.

Khirbet al Mafjar, in Hisham's [691-743] Palace cum *villa rustica* in Palestine (near Jericho). In its bath complex – heated by typical Roman hypocaustum installations, “the lavish decoration includes painted stucco statues of semi-naked bathing girls.”³¹

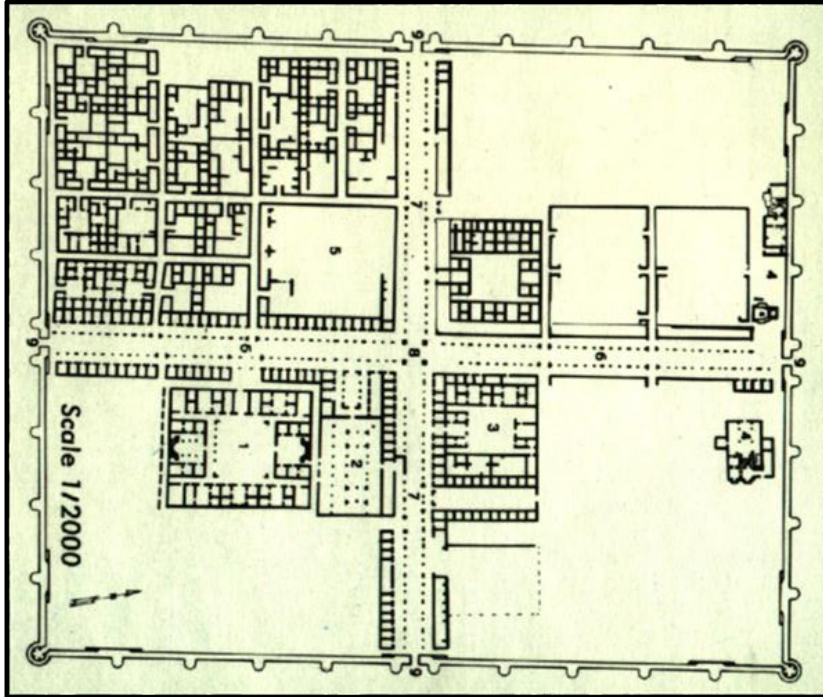
Yet, the 8th c. Umayyads do not only repeat 700 year older Hellenistic-Roman elements and techniques from the 1st c. CE. They also copy the 700 year older stepped merlons of 1st c. BCE/CE Nabatean-Arab rock tombs. Moreover, Umayyads re-animate

<p>Stepped merlons at three rock tombs at Mada'in Salih (1st c. BCE-1st c. CE) [http://whc.unesco.org/en/list/1293]</p>	<p>Stepped merlons above bathhouse entry at Hirbat al-Mafgar (734 CEff.) [http://artislam.skyrock.com/48.html]</p>	<p>Stepped merlons at Umayyad-Palace (Qasr al-Hair al-Garbi: 727 CE ff.) [http://www.pbases.com/bmcmorrow/image/79276859]</p>
		

³¹ A. Petersen, *Dictionary of Islamic Architecture*, London & New York: Routledge, 1996, p. 267.

700 year older *Ziegeldurchschuss-Mauern* (“alternating courses of ashlar blocks and layers of baked brick”³²) that have been characteristic from Late-Hellenism (end of 1st c. BCE) well into the 1st/2nd c. CE. Hellenistic arched arcades, too, experience an Umayyad renaissance.

Early 8th c. CE Umayyad Anjar (Ain Gerrha) founded in 714 (Lebanon; 370 x 310 m) in a plan “re-calling earlier Byzantine and Roman cities”³³ with *decumanus* and *cardo*. (<http://almashriq.hiof.no/lebanon/900/910/919/anjar1/excava.html>).



8th c. CE Umayyad city Anjar with arched Hellenistic-style arcades and *Ziegeldurchschuss*-walls (re-erected by excavators) in the manner of the 1st c. BCE/CE (<http://www.panoramio.com/photo/642438>).

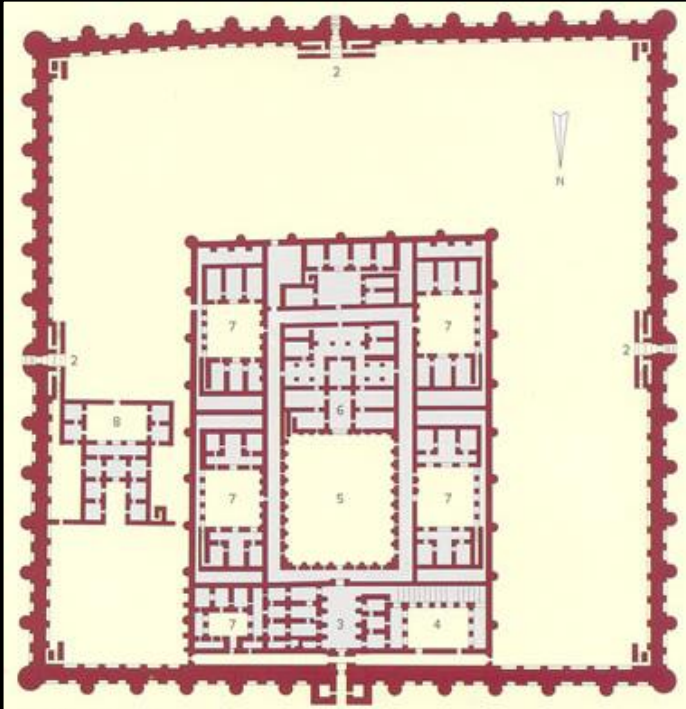


³² A. Petersen, *Dictionary of Islamic Architecture*, London & New York: Routledge, 1996, p. 20.

³³ A. Petersen, *Dictionary of Islamic Architecture*, London & New York: Routledge, 1996, p. 20,

What about early Abbasids (750-900s)? Do they also resort to 700 year older models? Indeed! Their forts stun archaeologists no less than Charlemagne's 9th c. *Villa Rustica* at Ingelheim in 2nd c. Roman outline and technology because "their basic plan comes

Abbasid 8th c. fortress, Ukhaidir (West of Kerbala/Iraq), with a 1st c. "Roman military" layout (http://www.almendron.com/artes/arquitectura/islam/cap_06/imagenes/ukhaidir_01.htm).



Harun ar-Rashid's Ar-Raqqah (founded by Alexander the Great; *Callinicum* in Roman times) strangled under sand in the 930s (1930s foto before excavations; *Kaiser und Kalifen*, 2014, p. 257).³⁴



³⁴ <http://islamic-arts.org/2011/architecture-of-the-abbasids-iraq-iran-and-egypt/>

from Roman military models”³⁵, too. As in the case of Charlemagne, there are no known Abbasid orders to architects to build in a 700 year older style.

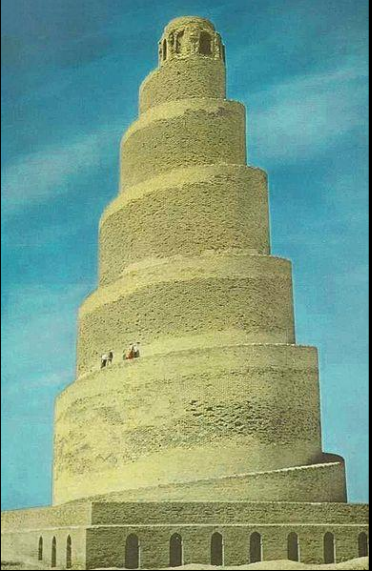
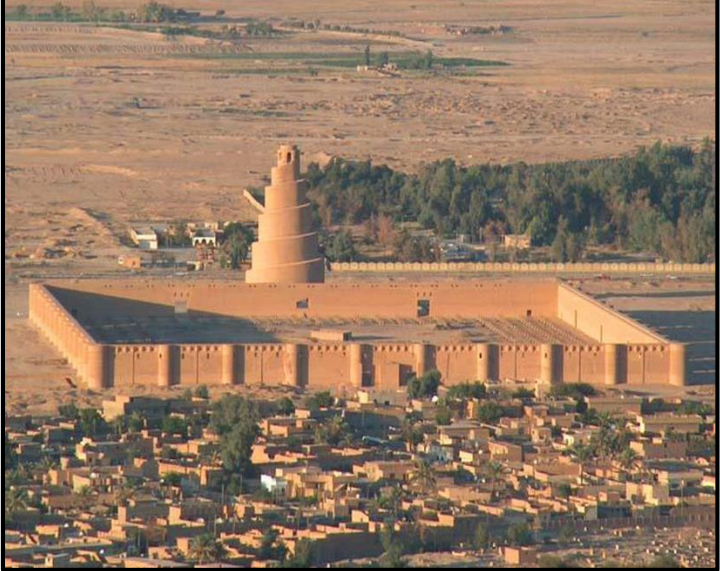

Like Poland’s 9th c. Truso, 9th c. Arab Raqqah revealed 2nd c. Roman coins (Antoninus Pius [138-161]; Septimus Severus [193-211]; Caracalla [198-217]).³⁶ The city was founded by a Seleucid ruler, Seleukos II Kallinikos (246–225 BCE) under his own name (Καλλίνικος) that was turned into *Callinicum* during Roman rule. Raqqah’s site always enjoyed as superior strategic location. The rubble revealed Roman coins all the way up to the 6th/7th c. CE mixed with Abbasid pieces. Thus, if it comes to catalogue-dated coins Raqqah existed through all the thousand years of the 1st millennium CE. Yet, Raqqah’s building strata from the 1st to the 8th c. CE have never been found. The city provides a good example that it is easy to bring contemporary coins into a successive sequence. This cannot be repeated with a stratum. One cannot date its eastern end to the 3rd, its central part to the 6th, and its western end to the 10th c. CE. A decision had to be taken for one of these three options. In Raqqah it fell on the 10th c. CE. By the 940s, Raqqa was known as a wasteland roamed by Bedouins. That end was definitely catastrophic. Yet, no sources exist that could give us a clue about that city’s terrifying fate.

However, once Raqqah’s late 1st millennium CE building strata had been identified as Harun ar-Rashid’s (766-809) imperial residence of some 10 km², it confused scholars with items for all the ten centuries available in textbook chronology. The same is true for Samarra, the most splendid of the 9th c. Abbasid metropolises. It had been known since Assyrian times. As *Souma* it was mentioned in the 2nd c. CE (Ptolemy; 90-168 CE). In Latin the place is known as *Sumere*, a fort mentioned by Ammianus Marcellinus for 363 CE (stratigraphically 1st c. CE). Yet, Samarra’s first seven centuries of the 1st millennium CE have no building strata although its famous spiral minaret resorts to 1st millennium BCE ziggurat predecessors. The 1st and 2nd century

³⁵ <http://otraarquitecturaesposible.blogspot.com.tr/2011/03/typologies-in-islamic-architecture-iv.html>

³⁶ S. Heidemann, “Die Fundmünzen vom Tall al-Bī‘a bei ar-Raqqah und ihr Verhältnis zur lokalen Geschichte“, 2008, http://www.aai.uni-hamburg.de/voror/Personal/heidemann/Heidemann_Texte/Heidemann_ZfOA_2008_Tall_al_Bia.pdf.

sources attesting Samarra's existence cannot be brought to fruition. However, once stratigraphy is called upon the sources as well as the coins can be accommodated. Because Samarra's 8th to 10th building level lies parallel with the periods dated 1st-3rd or 4th-6th c. CE, all material and written sources can be used to illuminate that splendid city. It no longer comes as a surprise that Samarra's 8th or 9th c. glass or works of stucco are, down to the chemical fingerprints, identical with Roman specimen of the 1st and 2nd c. CE. It may even be contemplated that it was Rome that received inspirations for these crafts from the East and not *vica versa*.

<p>Samarra's 9th c. CE spiral minarett (52 m) that goes back to 1st millenium BCE ziggurat forms</p> <p>[http://commons.wikimedia.org/wiki/File:Great_Mosque_of_Samarra.jpg]</p>	<p>Aerial view of Samarra's minaret compound (240 x 160 m) in the "<i>largest archaeological site in the world, Samarra stretches more than 40 kilometers along the Tigris</i>" (http://www.cemml.colostate.edu/cultural/09476/iraq05-058.html)</p> <p>[http://betterarchitecture.files.wordpress.com/2014/01/great-mosque-of-samarra.jpg].</p>	<p>Location of major sections of ancient Samarra (north of modern city) strangled under sand in the 10th c. CE (http://www.cemml.colostate.edu/cultural/09476/images/iraq05-058-04.jpg).</p>
		


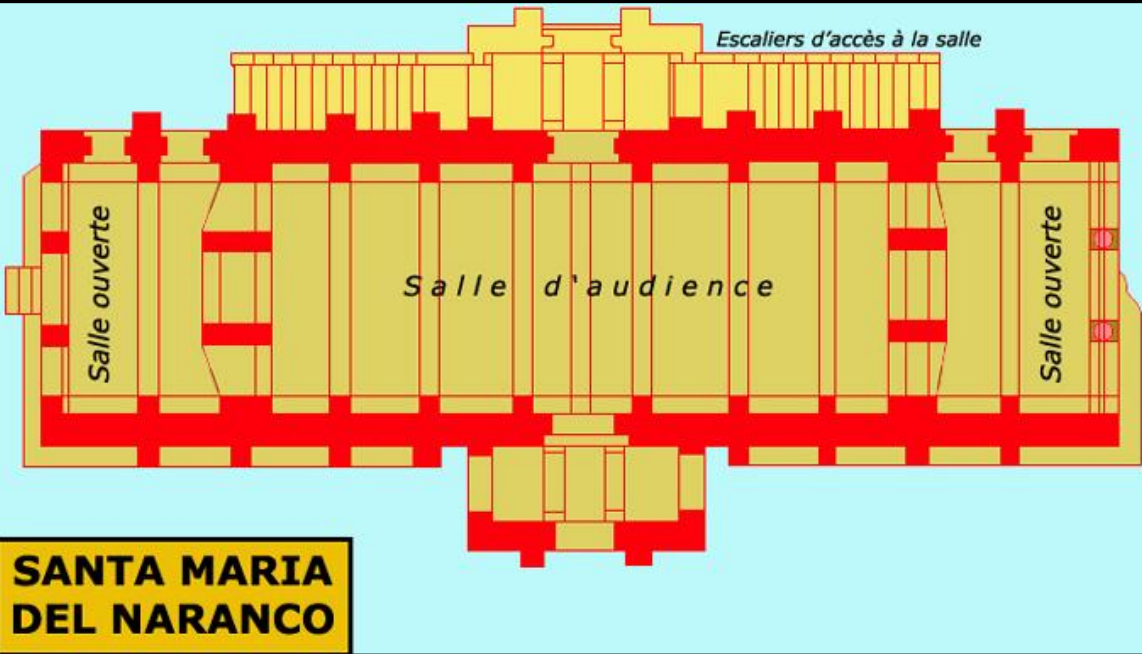
Yet, whatever the chronological period assigned to Near Eastern sites, e.g. 1st-3rd c. for Nabatean Madai'in Salih but 8th-10th for Abbasid Raqqa, they continue in the later 10th c. CE. Madai'in Salih reappears as a modest oasis in the writing of Al-Maqdasi (946-1000). Raqqa turns into the realm of desert Bedouins. Stratigraphically the two sites are parallel, and contingent with the 2nd millennium.

If we turn to Spain, the Abbasids' Visigothic neighbours of the 9th c. also adhere to 700 year older Roman architecture. King

8th/9th c. **Visigothic Asturia with Oviedo (yellow)** in the period of Ramiro, *Rex Gotorum Ramiro (842-850) vis à vis* **Abbasid Spain (green)** [<http://www.die-jakobsritter.de/Reconquista.htm>]



Ramiro's (842-850) 9th c. *villa rustica* is located close to Roman 2nd/3rd c. baths on the slopes of *Monte Naranco*. The villa's

<p>Ramiro's 9th c. <i>Aula regia</i> (Oviedo) in 2nd c. design http://esphoto980x880.mnstatic.com/santa-maria-del-naranco-y-san-miguel-de-lillo_104478.jpg.</p>	<p>Ground plan of Ramiro's 9th c. <i>Aula regia</i> (Oviedo) in 2nd c. design with a porticus on either side (amphiprostyle) http://www.encyclopedie.bsditions.fr/image/article/plan/ESASTARCMARNARA009.jpg.</p>
	 <p>SANTA MARIA DEL NARANCO</p>

Aula regia (later turned into *Santa Maria del Narranco*) is the oldest intact secular building of the Middle Ages. Charlemagne's *Aula regia* from his Ingelheim villa is only known from archaeological remains. No orders by Ramiro to employ a 700 year older

design are known. Yet, his aula is regarded as a miracle because “practically it is a Roman tetrastyle amphiprostyle temple.”³⁷ Such buildings from the 1st/2nd c. CE had a columned porticus on either side. The Oviedo experts cannot detect, between the 2nd c. style of Oviedo’s villa rustica and its 9th textbook date, “a break, not to speak of ‘dark’ centuries. / The surprising ornamental painting in a Roman-Pompeian [1st c.] style [...] conveys the impression of a through and through antique basilica.”³⁸ A difference between the 2nd and 9th c. is simply not discernible.

You may be aware by now, Trevor, that it is only me who is not surprised by the identity of artifacts and coins in 2nd and 9th c. strata all the way from Norway to Iraq because to me 2nd c. strata belong to the 9th c. whereas the 700 years in between do not belong to historical reality.

You may also better comprehend that drawing on all the sources available by following the stratigraphy of the places they refer to (instead of splitting and dividing them over separate time-spans) allows historical narratives that have been prohibited for nearly a millennium to obey chronological dogma. For the time being nobody can understand the annihilation of Scandinavian, Baltic and Arab civilizations in the early 10th c. CE. We believe that no sources have survived. Yet, the annihilations of the 230s and 520s have left sources. They refer to events tied to strata that are parallel with the 8th-10th c. strata from Scandinavia to Meopotamia. Therefore, “3rd” and “6th” c. sources can shed light on these territories too. When Procopius (500-565) envisages the 520s cataclysm as a global event, he cannot help but pointing to the burying of cities like Kaupang (Norway) or Samarra (Iraq), too. The silence over their demise can, at last, be lifted. By showing the contemporaneity of the scarred strata in Rome, Byzantium and the rest of the ancient world the enigmas of three civilizational collapses have been solved simultaneously by showing that there has been just one. The following overview tries to make their contemporaneity easier accessible.

³⁷ Cf. *Santa María del Naranco*, http://en.wikipedia.org/wiki/Santa_Mar%C3%ADa_del_Naranco, 18-01-2014, accessed 23-04-2014.

³⁸ S. Trinks, „Oviedo und Aachen: Gebaute Macht der Asturier und Franken“, in Stiftung Deutsches Historisches Museum, Hg., *Kaiser und Kalifen: Karl der Große und die Mächte am Mittelmeer um 800*, Darmstadt: WBG - Philipp von Zabern, 2014, pp. 290-309 / 293/293. (“Ein Bruch, gar ‚dunkle‘ Jahrhunderte, wird nirgends erwähnt. [...] Die erstaunliche Ausmalung im römisch-pompejanischen Stil [...] erzeugt den Eindruck einer durchgängig antiken Basilika“.)

TEXTBOOK-CHRONOLOGY OF THE FALL OF THE ROMAN EMPIRE AND ITS NEIGHBOURS

up to 700 years apart

	WEST	CENTER	NORTH/EAST
Strati- graphy <i>all in one horizon</i> of the fall of the Roman Empire.	ROME: 3RD C. CE CATACLYSM Same stratigraphical horizon as BYZANTIUM + NORTH/EAST. -1st-6th c. Roman coins. -No strata* 4th-10th c.** -Written catastrophe-sources -real destructions -Pelusian plague depopulation -Cyprian's earthquakes	BYZANTIUM: 6TH C. CE CATACLYSM Same stratigraphical horizon as ROME + NORTH/EAST. -1st-6th c. Roman coins. -No strata* 1st-3rd/7th-10th c. CE -Written catastrophe-sources -real destructions -Pelusian plague depopulation -Justinian's Comet + Allah's Elephant Stones.	SCANDINAVIA/POLAND etc./IRAQ: 10TH C. CE CATACLYSM Same stratigraphical horizon as ROME + BYZANTIUM. -1st-6th c. Roman coins. -No strata* 1-7th/8th c. CE -No written catastrophe-sources*** -real destructions -Depopulation -Burying of cities/towns under mud, dark earth, sand etc.
<p>* Meant for individual sites. Of course, in a territory there may be sites with strata dated 1st-3rd c. besides sites with strata dated 4th-6th c. besides sites with strata dated 8th-10th c CE.</p> <p>** Christian Basilicas of 1st/2nd c. style that are dated tot he 4th/5th belong to 1st/2nd (also=8th/9th c.).</p> <p>*** The sources appear to be missing because they are dated either to the 3rd or to the 6th c. CE.</p>			

There are, within the 1,000 years of the 1st millennium, only some 300 years with building strata in any individual Scandinavian, Slavic or Arab site. Therefore, all of them share the same 8th-10th stratigraphical horizon for those blocks of three centuries (whatever their textbook dates). All sectors of Europe, if the catastrophe striking them is dated to the 230s, the 520s, or the 920s/930s, share a terrible common fate in the 10th c. CE. They all fall together.

It is this gigantic catastrophe that interrupts the tradition of knowledge for several decades:

"The tenth century was the 'age of Iron' (saeculum ferreum), the Dark Age (saeculum obscurum). [...] When the Carolingian unity began to crumble and then collapse, when a period of renewed and universal anarchy in social relationships came (deepened for some time, as we mentioned above, by intruders from outside), when the light of the splendid but chronologically and geographically limited Carolingian Renaissance was extinguished, it would seem that the development of Latin Europe became retarded. A symptom of this regression may be the situation that in the period from about **920-960** as far as we know, **nothing of any great interest in the fields of intellectual development or literature appeared in Latin Europe.**"³⁹

Where nobody leaves anything serious in writing for 40 years (920-960) there is also nobody who can occupy himself with history writing or chronological computations. That must wait. Our chronologies for human history before 1000 CE are wrong because knowledge had been wiped out. **Neither conspiracies nor forgeries nor flawed dating methods are responsible for our confusion but a devastating loss of expertise.** It took nearly half a century to go back to the drawing board. What does one do when the sciences have died? One must start from scratch. One creates a new year 1 in the form of the year 1001. The construction of the periods up to 1000 CE has to be left to the future. Those, quite innocently, filling the time-span of 1 to 1000 CE the few surviving – and, then, seriously disfigured – sources for only some 300 years, cannot help but mess up the entire first millenium. It is our job to re-assemble the sources so that, eventually, history can be made intelligible.

³⁹ J. Strzelczyk, "The Church and Christianity about the year 1000: the Missionary Aspect", in *Europe around the year 1000*, ed. by P. Urbanczyk, Warsaw; 2001, pp. 41-67/42 f. [bold letters, GH]
(www.mgh.de/bibliothek/opac/?wa72ci_url=/cgi-bin/mgh/regsrchindex.pl?wert=kempfler,+adalbert&recnums=114966&index=1&db=opac;
courtesy Jan Beaufort)

II HIDDEN CONSPIRACY THEORIES IN MAINSTREAM HISTORIOGRAPHY

With all justification, dear Trevor, you distance yourself from authors who see “a conspiracy“ behind many texts dealing with 1st millennium history because, as you say, such a procedure would have required “inconceivable skill, scope and complexity“. Yet, there is an even bigger problem. Mainstreamers and conspiracy theorists alike are actually feeding on each other. They present two sides of the same anti-scholarly coin. Let me illustrate this point by focusing on Carolingian Franks and Alfred the Great’s Saxons. The hard evidence we have – mostly coins but also palaces like Charlemagne’s Ingelheim – show portraits of rulers wearing a Roman diadem and a Roman chlamys, and buildings exhibiting 2nd c. Roman period archaeology and technology. Ingelheim’s 89m-wide “semicircular building clearly shows the significance of antique models for the Carolingian building plan. This building by Charlemagne is the only one of its kind in medieval architecture.“⁴⁰

Yet, mainstream authors – in many thousands of articles and monographs – spread their belief that these material items do not belong to the 1st/2nd c. CE, whose remains they strikingly resemble, but to the 8th/9th c. CE, i.e. they were inspired by up to 700 year older Roman models. Younger scholars, however, express uneasiness with such a bewildering assumption. After all, they – like their older teachers – simply do not have a single trace of orders from Charlemagne forcing his architects to study 2nd c. Roman technology, so that 700 years later they can create perfect copies of Roman buildings, right down to the paint on the walls: “It is surprising that no programmatic connection between Charlemagne’s palatial architecture and Rome’s imperial building tradition it draws upon has ever been found. The building period [8th/9th c.] would have required a detailed planning period long before we have the first texts inspired by Emperor Charlemagne, e.g. the *Libri Carolini* (around 794).“⁴¹

⁴⁰ Semicircular, “Kaiserpfalz Ingelheim: Semicircular Building“, 2009 (http://www.kaiserpfalz-ingelheim.de/en/historical_tour_08.php).

⁴¹ H. Grewe, "Pfalzen Karls des Großen", in Stiftung Deutsches Historisches Museum, ed., *Kaiser und Kalifen: Karl der Große und die Mächte am Mittelmeer um 800*, Darmstadt: WGB-von Zabern, 2014, 158-181/ 181. ["Fast überrascht es, dass eine programmatische Anknüpfung an die imperiale Tradition der römischen Kaiserzeit in der Pfalzenarchitektur Karls des Großen nicht nachzuweisen ist. Die Baudaten würden eine Planung lange Zeit vor dem ersten kaiserlich motivierten Text voraussetzen, als der die *Libri Carolini* (um 794) gelten"].

Now, Trevor, imagine the conspiracy required to delete each and every trace of the documents in which the architects had reported the results of their archaeological research to meet Charlemagne's incredible demands. Who would have dared to burn all the biographies in which these researchers must have bragged about their sensational endeavours in studying ancient cements and pigments. Imagine the risks incurred by the perpetrators going to destroy all the orders of this powerful and ruthless emperor, down to the copies kept by the lieutenants overseeing Charlemagne's numerous workmen.

Impossible, you would say. The skill, scope and complexity of such an operation is simply inconceivable. Trevor, you would be right, and, at the same time, you would discover that mainstream historiography of the 1st millennium is based on hidden assumptions of enormous conspiracies to delete the most important sources. To really do justice to those you correctly accuse of conspiracy theories you must not hide the conspiracies implicitly assumed by those whose teachings you defend.

Now, how do the two conspiracy schools feed on each other? They do so by having in common one ironclad belief: Charlemagne or Alfred the Great etc. do not belong to the Roman period even though their material remains look intriguingly Roman. It is the unshakeable credo of both schools that these rulers are medieval lords expected to live in castles with towers, drawbridges and moats. Since no such dwellings have ever been found in the 8th-10th c. CE period – they begin in the 11th c. – dissidents like Illig etc. have drawn the conclusion that Charlemagne and Alfred the Great never existed, and that the texts pertaining to them must have been forged. Mainstream authors, however, have concluded that Charlemagne and Alfred the Great were crazy about antiques and, therefore, had given orders to perfectly imitate Roman models that were built up to 700 years earlier, and that these orders were then covered up by a huge conspiracy.

One of the aims of my work is to liberate the writing of 1st millennium CE history from the conspiracy theories employed by both sides of the controversy. Any help I can get for this approach is welcome. Yet, I will not condone pushing a dissident conspiracy theory aside to give more room to propaganda for *hidden* mainstream conspiracy theories.

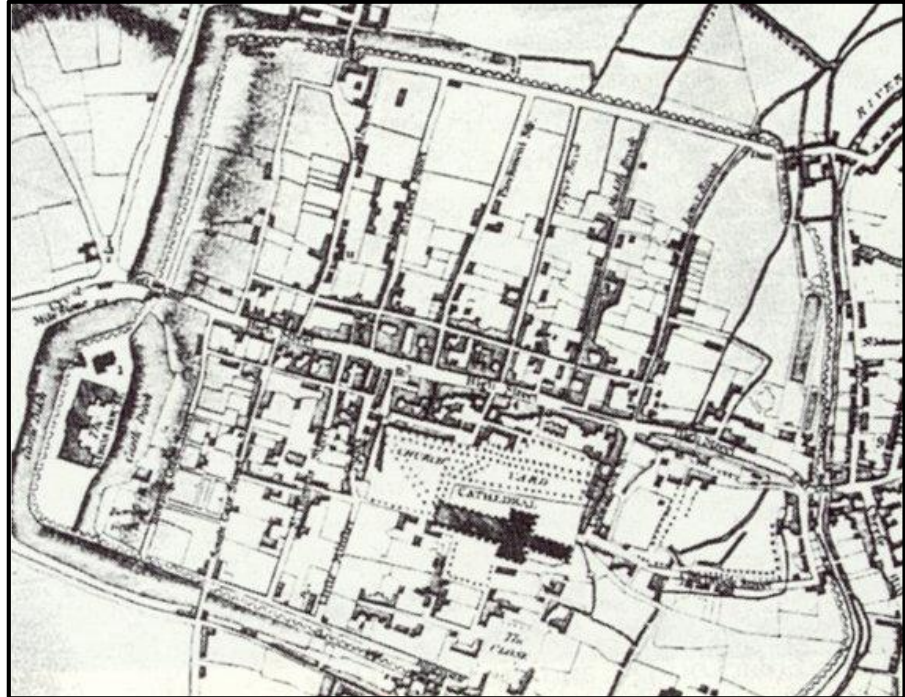
III ANGLO-SAXON KINGS AS FASHION-OBSSESSED CARNIVAL PRINCES?

Trevor, you may be aware by now that, for the time being, I am the only author who can defend Alfred the Great (871-899) against slanders of being a freak or some kind of a perennial carnival prince obsessed with donning Roman attire. Moreover, I may be able to lay to rest doubts about Alfred's very existence by identifying in his city, *Venta Belgarum* (Winchester), his

Roman Wall (behind grill) at *Venta Belgarum*: "A small section of Roman wall, dating from the **3rd century A.D.** This is the only remaining visible section of the city's Roman walls". (http://en.wikipedia.org/wiki/File:Roman_Wall_at_Winchester_-_geograph.org.uk_-_1743997.jpg.)



Map of Winchester in 1791 (cross shape=Cathedral)
[<http://www.dina8.f2s.com/winchest.htm>]

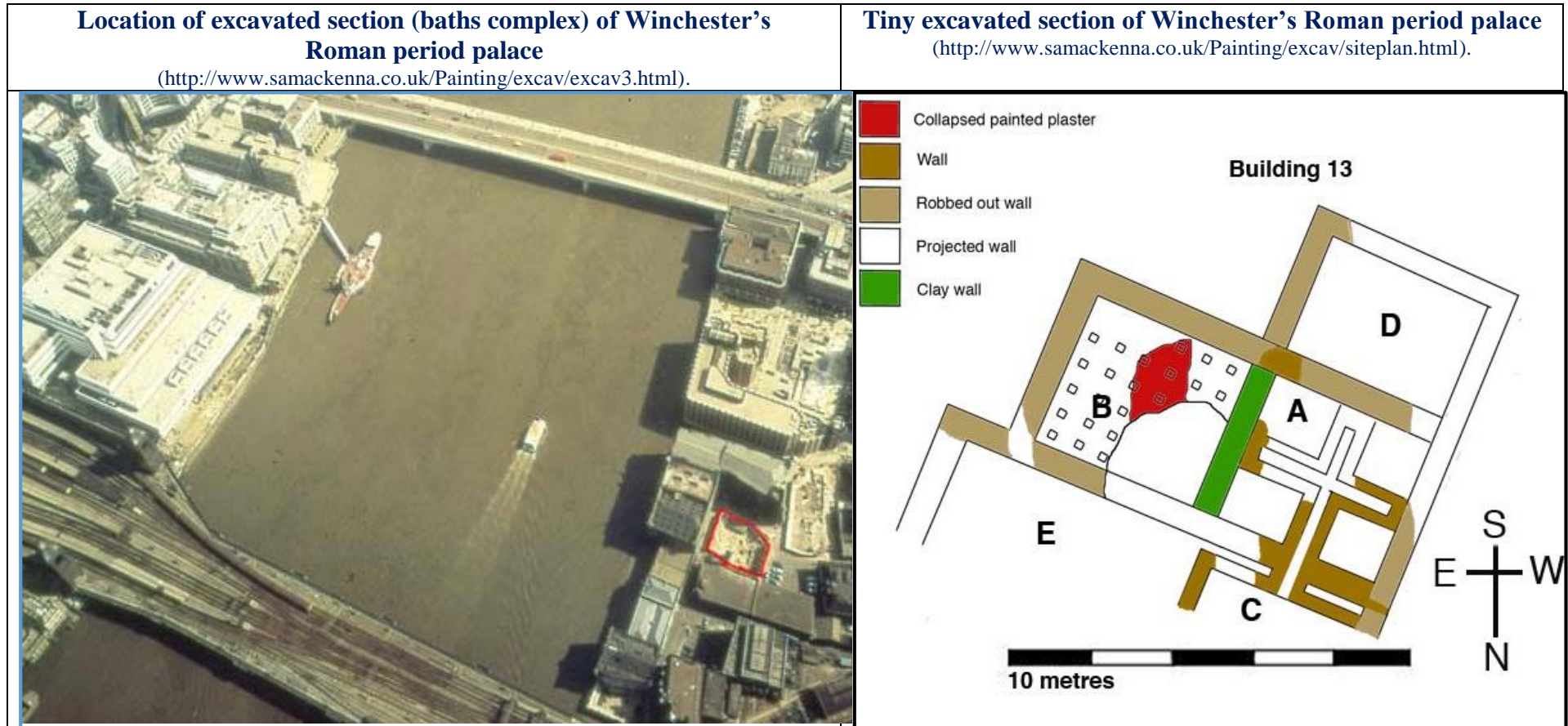


palace that many generations of researchers have failed to detect. Why that colossal failure? Because all scholars, without exception – this anti-scholarly attitude, again, has a taste of an involuntary conspiracy – have decided to discard Alfred’s Romanness as an embarrassing aberration of a fashion fool. Anglo-Saxon rulers – we are told – carried imperial diadems in their hair because “this classical imagery greatly appealed to early medieval kings.”⁴²

<p>Anglo-Saxon rulers wearing Roman diadems. Scholars believe that they „appealed“ to their sense of fashion. To the author they indicate that the Saxons lived within the Roman period (competing with the Romans for England’s conquest since the 1st c. BCE). There are no non-Roman urban strata for 7th-10th c. England whereas the Saxons’ Romanness fits England’s Roman period strata that are, however, dated some 700 years too early.</p>			
<p>Emperor Augustus (31 BCE-14 CE) with diadem [kornbluthphoto.com/Historical Cameos3.html].</p>	<p>Eadbald of Kent (616-640) [http://www.bbc.co.uk/blogs/legacy/pm/2010/12/a_history_of_the_world_in_thre.shtml.]</p>	<p>Coenwulf (796-821), King of Mercia (http://www.telegraph.co.uk/news/uknews/1510009/Anglo-Saxon-gold-coin-leaves-British-Museum-out-of-pocket.html).</p>	<p>Alfred the Great (871-899) [http://www.royalmintmuseum.org.uk/collection/collection-highlights/coins/alfred-the-great-penny/index.html].</p>
			

⁴² Historytrails, “Anglo-Saxon coins“, 2006, http://www.bbc.co.uk/history/trail/conquest/wessex_kings/coins_offa.shtml.

By not only sticking to the sources (coins etc.) but also to Winchester's stratigraphy (with, in conventional chronology, no levels for Alfred's 9th c. date) I am able to identify his residence as the palace found in Winchester's 2nd/3rd c. Roman stratum.



To get an idea of the layout of an intact Roman period palace inhabited by a Romanized native the complex in Fishbourne close to *Noviomagus Reginorum* (modern Chichester in Sussex [Southern Saxony]) may be instructive. Today we believe that Saxons

have annihilated town and palace that lay hidden up to 1960 when a new water main was built. Yet, there are no Saxon strata on top of Roman *Noviomagus Reginorum*. I see it, like *Venta Belgarum*, as a town of locals from the Roman period.

Model of Roman period (1st/2nd c.) palace (ca. 150 x 150 m) close to *Noviomagus Reginorum* (Chichester) at Fishbourne (Sussex) [<http://www.bbc.co.uk/arts/yourpaintings/galleries/collections/fishbourne-roman-palace-528>].



Alfred – what an irony! – is correctly dated because Winchester’s palace stratum, if dated according to stratigraphal depth, does, indeed, belong to Alfred’s 9th c. and not to the 2nd c. CE. That “2nd“ (=9th) c. stratum is contingent with 10th/11th c. CE

Winchester’s St. Peter and Paul (“648 CE“; Old Minster) using the **Long Roman foot** (0.333 m), and, according to tradition, **built in the 2nd c.** for Lucius of Britain.
([http://www.winchester-cathedral.org.uk/history-treasures/.](http://www.winchester-cathedral.org.uk/history-treasures/))

Wall painting in a 4m high room of the 2nd/3rd c. palace of Winchester where Roman-clad Alfred’s stratum and palace are supposedly missing (discovered in 1983; reconstructed by Sean A.MacKenna [1932-2012]).

(<http://www.archeurope.com/index.php?page=winchester-palace-roman-wall-paintings.>)



Winchester whilst Rome’s 2nd c. date – not only for Winchester’s Roman stratum but for the entire empire – has to be moved some 700 years closer to us (to do justice to its stratigraphical contingency with the 10th/11th c.).

Chronology of <i>Venta Belgarum</i> (Winchester)		
Left: Conventional dates. Right: Stratigraphy-based dates		
12 th c.	St. Ruel directly built on Roman remains from the 3rd c.	12 th c.
11 th c.	First stage of Winchester Cathedral (1079-1093) directly cutting “Old Minster“ (using the Long Roman foot). Roman trackway of 3rd c. used to transport the limestone blocks from Isle of Wight for the cathedral.	11 th c.
10 th c.	“Nunnaminster“ (no traces). Æthelwold of Winchester (904/9 – 984) organizes monastic reform in late 10th c.	10 th c.
9 th c.	No evidence for the SPLENDID PALACE and rich urban environment of Alfred the Great (871-899).	
8 th c.	No evidence	
7 th c.	St. Peter and Paul/“Old Minster“ (dated anti-stratigraphically to 648 CE). Uses Long Roman foot (0.333 m) and belong to 2nd c CE. According to tradition, the “Old Minster“ was built in the 2nd c. for Lucius of Britain.	9 th (=2 nd c.)
6 th c.	No evidence	
5 th c.	No urban evidence. Because of burials dated by coin-catalogues some continuity is assumed.	
4 th c.	Houses in disrepair; drainage system collapsed.	
3 rd c.	Last traces of city walls / Annihilation of Roman Winchester. ----- Walls of early 3rd c. around 58,000 m ²). Continuation of rich urban environment, temples etc..	930s (=230s)
2 nd c.	Defensive bank and ditch. Many Roman town houses. Public buildings. SPLENDID PALACE.	9 th =2 nd c. ALFRED'S PALACE
1 st c. CE	Roman settlement of England (from the South) contemporary with Saxon settlement of England (from the East)	8 th (=1 st CE)
1 st c. BCE	Hillforts in the vicinity of <i>Venta Belgarum</i> . [Period of Britons like <i>Athle-Domarus of Camulodunum</i> .]	7 th (=1 st BCE)

You may remember, Trevor, that in my response to your first comment⁴³ I have tried to save *King Arthur of Camelot* from obliteration by identifying him with *King Athle-Domarus of Camulodunum* (Roman Colchester).⁴⁴ By applying stratigraphical information to Anglo-Saxon settlements I could show that the Romans (from the South) and the Saxons (from the East) conquered England in parallel (and competing) operations from the 1st c. BCE onwards. Since *King Athle* fought heroically against invaders from the East (location of German Saxony) in the late 1st c. BCE he could not been considered as the historical character behind

⁴³ Trevor Palmer Challenges "Gunnar Heinsohn's Latest", <http://www.q-mag.org/trevor-palmer-challenges-gunnar-heinsohns-latest.html>.

⁴⁴ See http://www.q-mag.org/_media/palmer-heinsohn-answer-22-06-14-roman-empire-8th-10th-century.pdf, p. 3.

King Arthur fighting Saxon invaders from the East in, supposedly, the **5th or 6th c. CE**. Up to 700 years of textbook-chronology between **A00e** and **Arthur** would make any attempt to see the latter as the *alter ego* of the former ridiculously far-fetched. By ruthlessly pushing aside Anglo-Saxon stratigraphy, the archaeologist John N.L. Myres (1902-1989), therefore, could pass the damning judgement: “No figure on the borderline of history and mythology has wasted more of the historian's time.”⁴⁵

Now that **King Arthur** has received **King A00e's** late 1st c. BCE (=7th c. CE) stratum of *Camulodunum*/Colchester, and Alfred the Great has, at last, taken possession of his palace in the late 2nd c. (=9th c.) stratum of *Venta Belgarum*/Winchester, it is time to do something for **King Lucius of Britain**, the legendary (early 2nd c.) indigenous founder of Winchester's “Old Minster“. I will not insist on the name Lucius as mentioned in the *Liber Pontificalis* although attempts to dismiss it as a scribal error have not been convincing:

“In 1904 Adolf von Harnack proposed that there had been a scribal error in *Liber Pontificalis* with ‘Britanio’ Brtiannia being written as an erroneous expansion for ‘Britio’ BIRTHA or Britium in what is now Turkey. In ‘King Lucius of Britain’ Knight reveals several problems with Harnack’s theory, namely that Abgar was King of Edessa, not ‘Britio’, which was the local name for a castle within his realm, and he is never called Lucius of Britio/BIRTHA in contemporary sources, only Abgar of Edessa. As Abgar was noted as an existing Christian ruler, Knight suggests there is no reason for him to have written to the Pope requesting baptism. Thus the similarities that Harnack noted between Lucius of Britain and (Lucius) Agbar Lucius Aelius Megas Abgar IX. of Edessa, who built a Birta, are not substantial enough, argues Knight, to justify Harnack’s proposed identification, nor the sway it holds in modern scholarship.”⁴⁶

Yet, I want to defend a 2nd c. date for the Christianisation of Britain as well as for Winchester’s earliest church. Nobody doubts that its designer had employed the Long Roman foot (0.333 m) for the building’s measures. Let us remember, Trevor, that Rome’s 2nd c. strata (demonstrated in part I above) are contemporary with Byzantium’s 5th c. strata. Thus, Rome’s Christian

⁴⁵ J.N.L. Myres, *The English Settlements*, Oxford: Oxford University Press, 1986, p. 16.

⁴⁶ Lucius of Britain, http://en.wikipedia.org/wiki/Lucius_of_Britain, visited 31-07-2014.

basilicas (built in 1st/2nd c. Roman style but dated to the 4th/5th centuries) have received their dates via Byzantine rulers (Constantine the Great ff.). The 5th c. boom (Byzantium date = 2nd c. Roman date) in church building throughout the empire is vastly documented.

I explain this wave of conversions out of the mindset of terror-stricken survivors of the plague in the decades of Marcus Aurelius (161-180) and Commodus (180-192).⁴⁷ These emperors are, stratigraphically, contemporary with Byzantine rulers from Marcian to Leo I (450s-470s). Therefore, there would be nothing wrong with a 2nd c. church in Winchester. Its recently assumed 7th c. date is not only put into doubt by the enigmatic re-animation of the Long Roman foot. Much more difficult to explain is the absence of any urban context in Winchester's 7th c. CE. By dating the "Old Minster" to the 2nd (stratigraphically 9th) c., the church receives a blossoming urban environment where the Long Roman foot was used by everybody.

Most cordially, Gunnar Heinsohn

Prof. Dres. Gunnar Heinsohn	
ul. Piwna 66 / 6	Beim Steinernen Kreuz 7
PL-80-831 GDANSK	D-28203 BREMEN
POLAND	GERMANY
Mobile: 0048 506362 103	0049 [0]421 702184

⁴⁷ See more in G. Heinsohn, "Why Did Christianity Spread So Slowly Across Europe In The First Millennium A.D.", 2014, http://www.q-mag.org/_media/gunnar-slown-christianization-01022014.pdf