

CILYCWM WARD: ELECTORAL DIVISION PROFILE

Policy Research and Information Section, Carmarthenshire County Council, May 2014

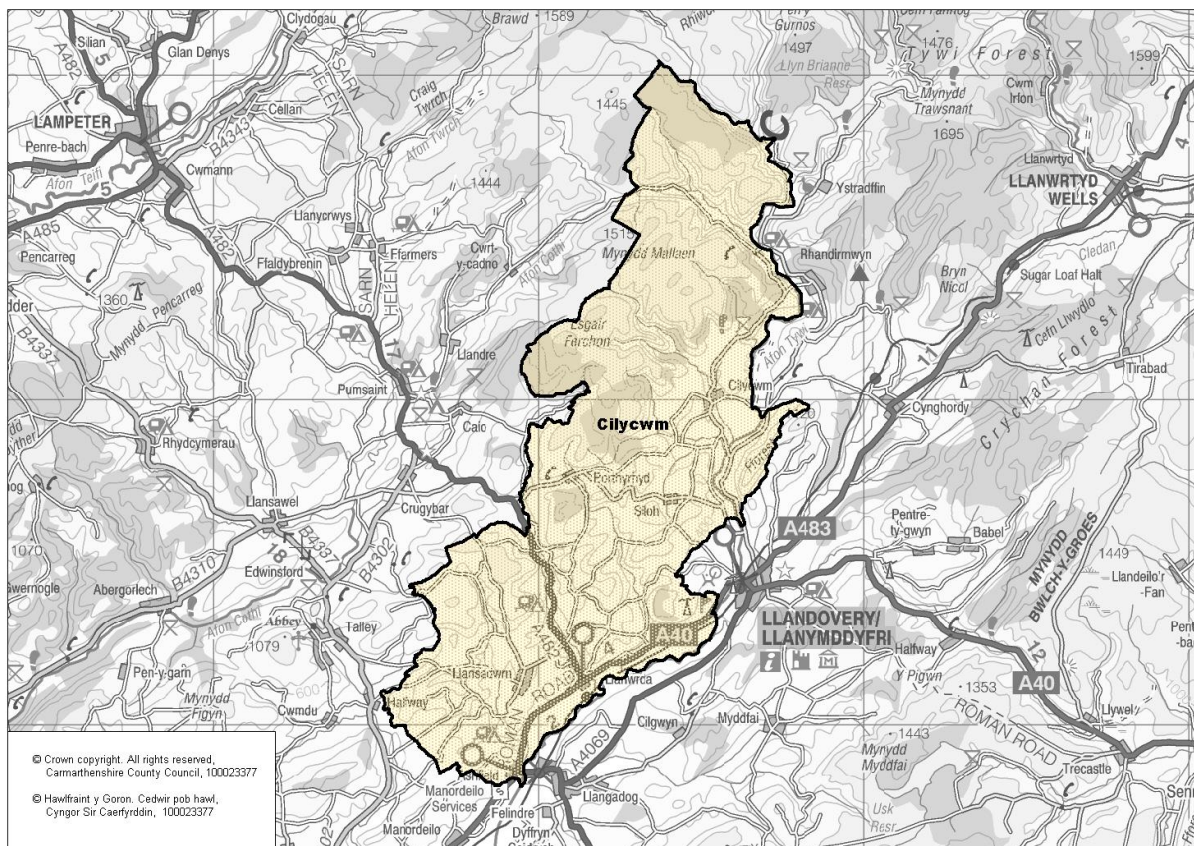
Councillors (Electoral Vote 2012): Tom Theophilus (Independent). Turnout = 59.76%

Electorate (2014): 1211

Population: 1,486 (2012 Mid Year Population Estimates, ONS)

Welsh Assembly and UK Parliamentary Constituency: Carmarthenshire East & Dinefwr

Council owned Facilities: Llanwrda C.P. School, Llansadwrn C.P. School, Cilycwm V.C.P. School, Llansadwrn Luncheon Club.



Location: Approximately 48km from Carmarthen Town

- ⇒ Regeneration Designations: Rural Development Plan 2007-2013 eligible ward
- ⇒ Area: 127.10km²
- ⇒ Population Density: 12 people per km²
- ⇒ Population Change: 2001-2012: +37 (+2.6%)
- ⇒ Major Employers: Carmarthenshire County Council (schools and leisure)

POPULATION STATISTICS

2012 Mid Year Population Estimates

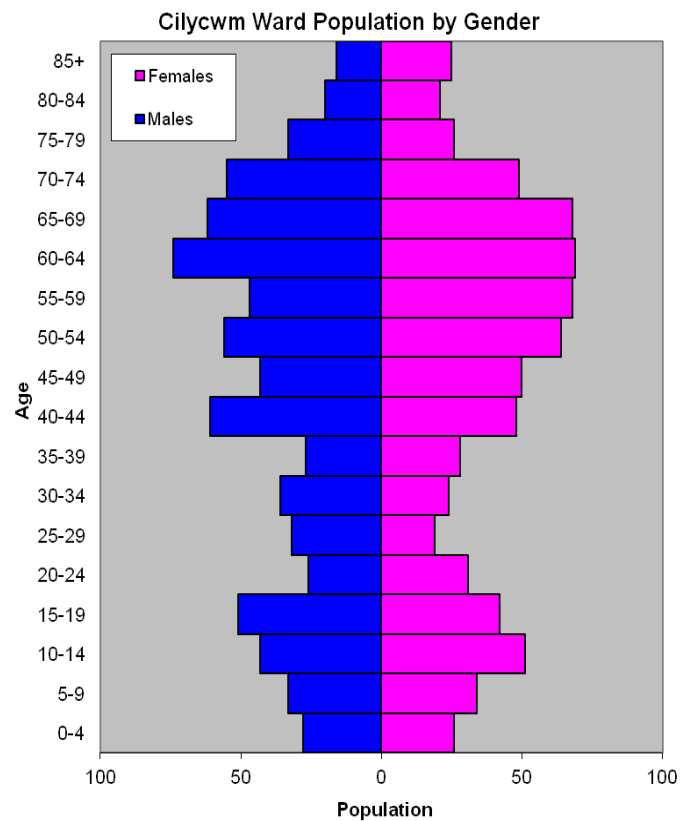
Age Structure	Cilycwm Population	Cilycwm %	Carmarthenshire %
Aged: 0-4	54	3.6	5.6
5-14	161	10.8	11.0
15-24	150	10.1	11.8
25-44	275	18.5	22.1
45-64	471	31.7	28.0
65-74	234	15.7	11.7
75+	141	9.5	9.8
Total	1,486	100	100

Births & Deaths	Cilycwm	Carmarthenshire
Birth (2012)	9	1,995
Births Rate	6.1	10.8
Deaths (2012)	20	2135
Death Rate	13.5	11.6

Source: Vital Statistics 2012, ONS.

Note: birth/death rates expressed per 1000 population.

- ⇒ The lowest ward population in Carmarthenshire, and the 3rd lowest population density
- ⇒ Highest proportion of people aged over 45, proportion aged 65-74 slightly higher than the Carmarthenshire average.
- ⇒ Higher proportion of people with higher level qualifications
- ⇒ Higher proportion of Welsh Speakers than the Carmarthenshire average.



2011 Census Data

Population: Key Facts	Cilycwm	Cilycwm %	Carmarthenshire
People: born in Wales	871	57.4	76.0
born outside UK	68	4.4	4.1
in non-white ethnic groups	37	2.6	1.9
with limiting long-term illness	327	21.6	25.4
with no qualifications (aged 16-74)	294	23.3	26.8
with higher level qualifications (aged 16-74)	369	29.2	23.9
able to speak Welsh	681	46.0	43.9

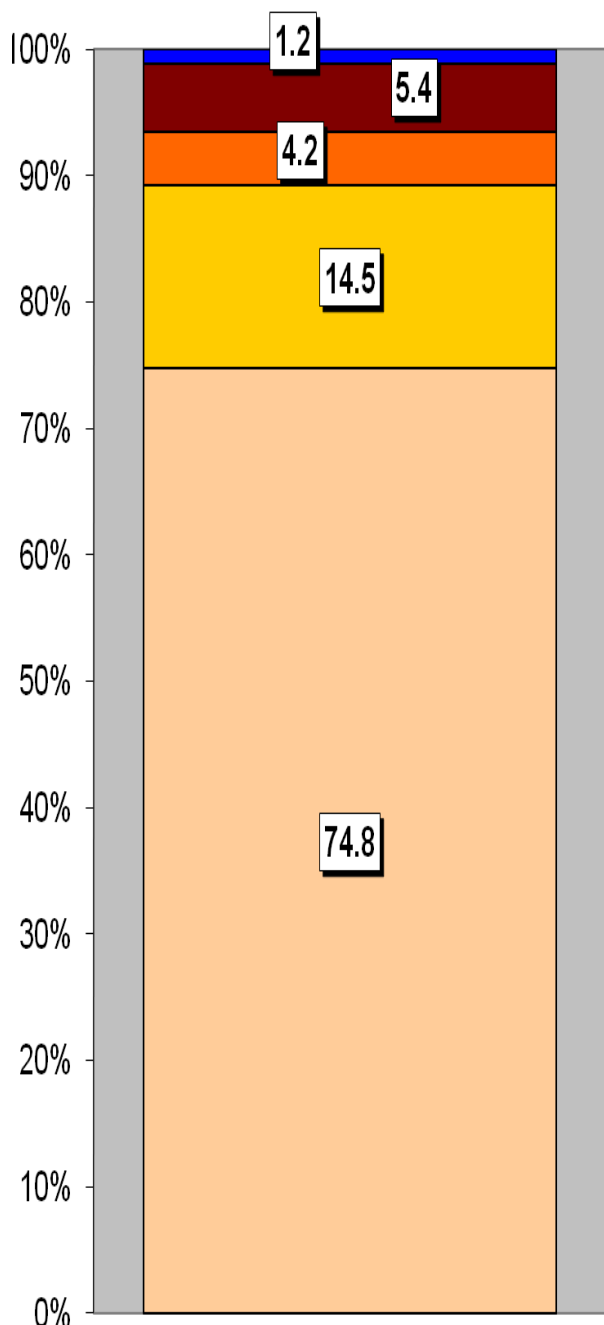
Household Composition	Cilycwm	Cilycwm %	Carmarthenshire
Total Households/ (Average Household Size)	630	(2.4)	(2.3)
Household Type: one person: pensioner	75	11.9	14.8
one person: other	87	13.8	15.4
one family: all pensioners	80	12.7	9.8
one family: married couple	231	36.6	34.1
one family: cohabiting couple	56	8.9	8.7
one family: lone parent	59	9.4	11.3
one family: other	42	6.7	5.9

Source: 2011 Census, ONS

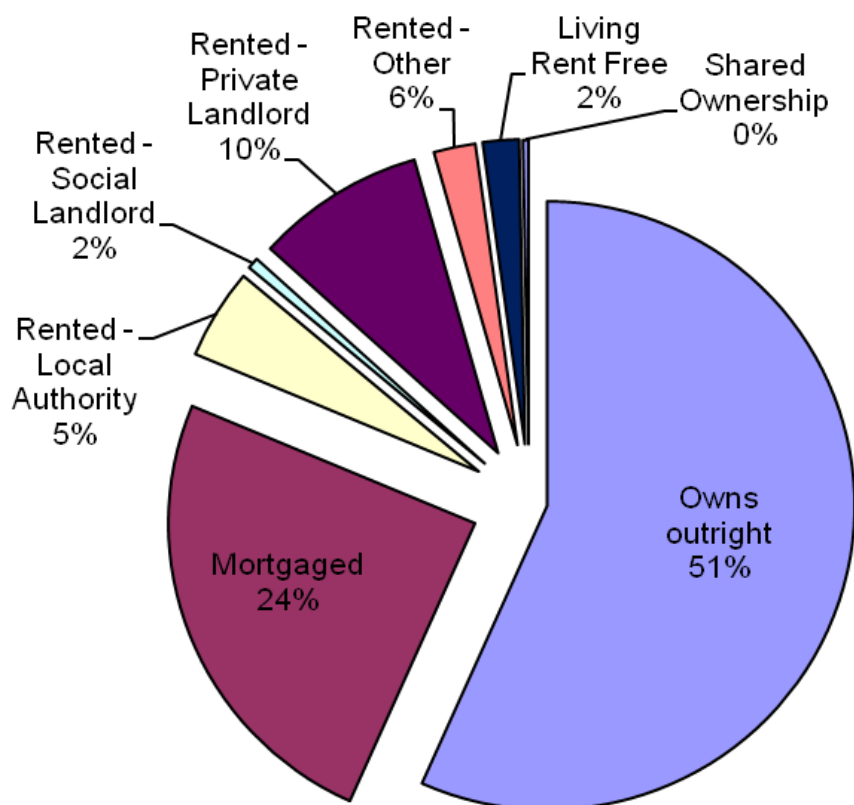
HOUSING

The area's housing consists majority of detached houses, which is almost three quarters of the housing stock. This is followed by semi-detached, the terraced houses and flat, maisonette and apartment, have a very similar proportion. The ward consists of 30 local authority owned properties and 4 Housing Association properties.

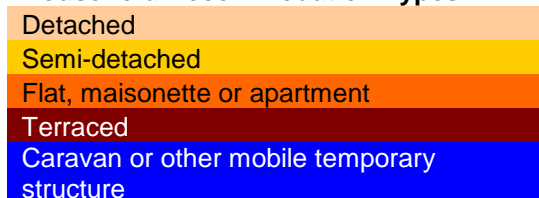
Household Accommodation Types



Household Tenure	%
Owns outright	56.7
Mortgaged	24.6
Rented - Local Authority	4.8
Rented - Social Landlord	0.6
Rented - Private Landlord	8.9
Rented - Other	2.2
Living Rent Free	1.9
Shared Ownership	0.3



Household Accommodation Types



SOCIO-ECONOMIC CHARACTERISTICS

- ⇒ The estimated median household income for Cilycwm, based on CACI's 2013 'PayCheck' data, is £24,225 which is the 24th highest (of 58 wards) in Carmarthenshire and 4.0% above the Carmarthenshire median of £23,284.
- ⇒ The social profile information indicates a lower than average level of who have never worked and long term unemployed (Level 8) and a higher than average number of small employers and own account workers (Level 4).

Social Profile	Cilycwm	%	Carmarthenshire %
<i>All people aged 16-74 in households</i>	1133	100	100
1: Higher Managerial & Professional Admin. Occupations	202	17.8	13.8
2: Lower Managerial & Professional Admin. Occupations	199	17.6	19.9
3: Intermediate Occupations	88	7.8	11.6
4: Small Employers & Own Account Workers	343	30.3	12.6
5: Lower Supervisory & Technical Occupations	57	5.0	7.6
6: Semi-routine Occupations	134	11.8	16.7
7: Routine Occupations	97	8.6	13.0
8: Never Worked & Long Term Unemployed	41	3.6	4.9

Source: 2011 Census, ONS

ECONOMY AND LABOUR MARKET

Benefit Claimants	Cilycwm	Rate %	Carmarthenshire Working Population %
Unemployment Benefit (JSA): April 2014	13	1.4	2.5
Incapacity Benefits (ESA/IB/SDA) November 2013	55	6.3	9.2
Income Support: November 2013	10	1.1	2.5
Disability Living Allowance: November 2013	70	8.0	14.3
Pension Credit: November 2013	40	4.5	8.0
State Pension Claimants: November 2013	415	47.2	39.0

Source: Jobcentre Plus administrative system Dept. for Work & Pensions

Economic Status (people aged 16-74)	Cilycwm	Cilycwm %	Carmarthenshire %
Economically Active	747	65.9	64.9
Employees: Part-time	133	11.7	13.9
Employees: Full-time	248	21.9	33.7
Self-employed	316	27.9	11.0
Unemployed	27	2.4	3.7
Full-time Student	23	2.0	2.5
Economically Inactive	386	34.1	35.1
Retired	230	20.3	18.1
Student	51	4.5	4.5
Looking after home/family	37	3.3	3.8
Permanently sick/disabled	53	4.7	6.8
Other	15	1.3	1.9

Source: 2011 Census, ONS

WELSH INDEX OF MULTIPLE DEPRIVATION (WIMD)

WIMD 2011 based on fine-grained geography of lower Super Output Areas (LSOAs). The WIMD 2011 is compiled from eight domains, Income, Employment, Health, Education, Housing, Access to Services, Physical Environment and Community Safety and is published at Lower Super Output Area of which there are 112 in Carmarthenshire.

Under WIMD, where Rank 1 is the most deprived, **Cilycwm** ranks 67 out of 112 in Carmarthenshire and is ranked 971 in Wales from 1896 LSOAs.

The highest level of deprivation attributed to **Cilycwm** is the Access to Services domain, being ranked 8th in Carmarthenshire and 29th in Wales for this domain.

LSOA	Overall Index		Domains: Income		Employment		Health		Education		Housing		Access to Services		Physical Environment		Community Safety	
	62	976	72	1152	69	1022	112	1794	96	1412	17	620	8	29	76	1154	109	1890
Cilycwm	62	976	72	1152	69	1022	112	1794	96	1412	17	620	8	29	76	1154	109	1890

Source: Welsh Index of Multiple Deprivation 2011 (released August 2011), Welsh Assembly Government.

Note: LSOAs ranked 1-112 (Carmarthenshire), 1-1896 (Wales).

CRIME

Cilycwm	Offence Group											Annual Total
	Violence against the Person	Sexual Offences	Robbery	Burglary	Auto crime	General Theft	Fraud and Forgery	Criminal Damage	Drug Offences	Other		
Fiscal Year (1st April to 31st March)												
2008/2009	2	0	0	0	0	5	0	1	5	1	14	
2009/2010	3	0	0	2	0	3	0	2	5	0	15	
2010/2011	2	0	0	3	2	6	0	3	0	0	16	
2011/2012	3	1	0	2	0	4	0	2	6	0	18	
2012/2013	2	0	0	1	0	1	1	3	3	0	11	
2013/2014	2	2	0	0	2	4	0	1	3	0	14	

Source: Dyfed Powys Police, Headquarters, Llangunnon.

For further information please contact:

Lesley Rees, Policy & Research Officer

01267 224462

llrees@carmarthenshire.gov.uk