

# **GEOGRAPHIC INFORMATION SYSTEM (GIS) AND REMOTE SENSING GEOSPATIAL ONLINE DATA MANAGEMENT PROJECT FOR THE MAUMEE WATERSHED, OHIO**

**Patrick L. Lawrence**, Associate Professor  
**Kevin Czajkowski**, Associate Professor  
Department of Geography and Planning  
University of Toledo  
Toledo, OH 43606  
[patrick.lawrence@utoledo.edu](mailto:patrick.lawrence@utoledo.edu)  
[kevin.czajkowski@utoledo.edu](mailto:kevin.czajkowski@utoledo.edu)

## **ABSTRACT**

This poster presents an overview of the development of an integrated Geographic Information System (GIS) and remote sensing geospatial online data management project for the Maumee River watershed in Indiana, Ohio and Michigan. The Maumee River watershed is the largest drainage basin that discharges into the Great Lakes. Although the watershed is largely a rural landscape, several major urban-industrial cities, including Fort Wayne and Toledo are located along the river. Many water quality concerns are present, including non-point rural runoff that contributes significant amounts of sediment into the Maumee River. There is an important need to collect, organize and assess the available information and better determine the status of the changes underway within the watershed. In 2005, the USDA Natural Resources Conservation Service (NRCS) entered into a five year agreement with the Geographic Information Science & Applied Geography (GISAG) Research Center at the Department of Geography and Planning at the University of Toledo, Ohio. The work performed will assist NRCS in undertaking sub-watershed rapid resource assessments, watershed and area planning, farm conservation planning, and delivery of conservation technical assistance and conservation cost-share programs authorized by the 2002 Farm Bill. The tasks undertaken with this project consist of: 1) Annually determining land cover and crop rotations via remote sensing techniques; 2) Combining Ohio, Indiana, and Michigan data layers to establish Maumee Watershed Project Area GIS database; and 3) Establishing Maumee Watershed Project GIS Website to provide educational and informational outreach with other project partners, resource managers, and the general public.

## **INTRODUCTION**

The Western Lake Erie Basin has been identified by United States Department of Agriculture's (USDA) Natural Resource Conservation Service (NRCS) as a major contributor of non-point source pollution into Lake Erie. In 2005, NRCS developed a plan to use Rapid Resource Assessments, Area Wide Planning, and acceleration of USDA Farm Bill programs to address the resource concerns for the Western Basin of Lake Erie, and contributing watersheds including the Maumee, Portage, and Ottawa Rivers. This 10-year study primarily addresses land use/cover changes, conservation tillage practices, and water quality monitoring. A secondary element of this plan is to develop a basin wide GIS (Geographic Information System) to aid in watershed planning projects and public outreach. Nelson and Weschler's (1998) study suggested that the Maumee River watershed might not be ready for basin wide collaboration on watershed planning, but with the implementation of a GIS-based institutional atlas, the local and regional organizations and agencies with interests in watershed planning could be moving in the right direction towards integration.

The watershed management approach has emerged as a holistic and integral way of research, analysis and decision-making at a watershed scale (Montgomery, et al., 1995; Perciasepe, 1994; Voinov & Costanza, 1999). Initially oriented toward the control of water supply and use, it has shifted to include a concern for water quality and the combined effects of land use in the drainage basin, particularly since non-point pollution has overtaken point-source pollution as a primary concern as a cause of impairment (Nelson & Weschler, 1998). By relating water quality and land use concerns, a link is created between science and planning, thereby connecting all stakeholders, community leaders, agency administrators, and concerned citizens in the watershed. Basin-wide collaborations can provide the expertise, scientific backing, moral support, and political leadership necessary to implement regional

plans. GIS interfaced hydrological models are considered as a major tool for surface water management at a watershed scale because they are capable of presenting the relationship between the spatial and hydrological features of the watershed in an efficient way (Al-Abed et al., 2005).

GIS is a general-purpose technology for handling geographic data in digital form (McKinney & Cai, 2002). GIS has the ability to combine physical features, political and administrative jurisdictions, and organizational missions in order to make sound recommendations or decisions for the entire watershed. The advances of GIS have grown beyond simple data management, storage, and mapping. Today, a more sophisticated means of analysis is being utilized by combining various mathematical and computer generated models with spatial data within the GIS. Simulation models are useful tools for analysis of watershed processes and their interactions, and for development and assessment of watershed management scenarios (He, 2003). Schreier and Brown (2001) used GIS for analysis of buffer zones, which were delineated and classified from digital aerial photos, which allowed the identification of the type, width and continuity of the buffer zone. Kelsey et al. (2004) used GIS techniques to calculate several “distance or proximity” land-use variables to examine land-use effects on fecal coliform densities.

A research team based at the Geographic Information Science & Applied Geography (GISAG) Research Center at the Department of Geography and Planning at the University of Toledo, Ohio is working with the USDA Natural Resources Conservation Service (NRCS) to develop GIS and remote sensing tools and products to assist in various watershed planning efforts underway by the NRCS and Army Corp of Engineers for the Western Lake Erie Basin Partnership ( <http://www.lrb.usace.army.mil/missions/wleb/index.html#basin>). The main aims of the Maumee GIS project are to:

1. Assemble and deliver GIS layers for the Maumee Watershed Project Area (including Maumee River Watershed, Ottawa River Watershed, Portage River Watershed and Lake Erie Direct discharge watersheds);
2. Establish a GIS Website for the Maumee Watershed Project Area linking an ArcIMS site for data viewing.
3. Maintain the website annually and update the data layers as new data becomes available.
4. Cooperate with the USDA NRCS; share data with NRCS and project partners through a password protected ftp site.

## MAUMEE WATERSHED

The Western Lake Erie Basin covers over 4.9 million acres across Ohio, Michigan and Indiana. The Maumee River, the most prominent watershed in the basin, begins in Fort Wayne, Indiana, and extends more than 130 miles to Lake Erie, 105 miles of which are located in Ohio (Figure 1). The Maumee River has the largest drainage area of any Great Lakes river with 8,316 square miles and drains some of the richest farmland in Ohio. The project area for this study will only include the drainage into Lake Erie south of the Ohio-Michigan state line. The cities of Toledo, Fort Wayne, and Lima constitute the major urban areas. Other smaller towns and cities are scattered throughout. The population of this area totals over 1.2 million people.

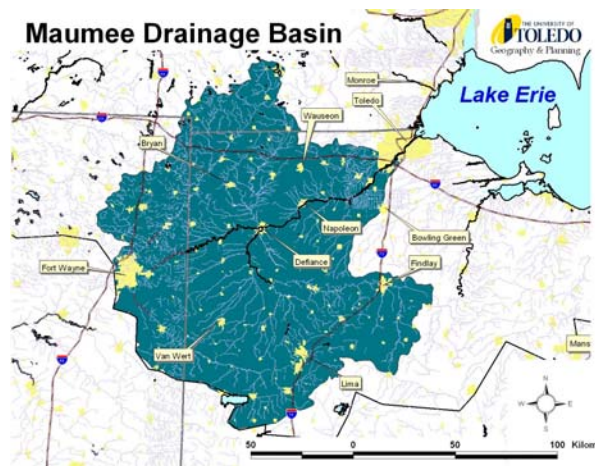


Figure 1. The Maumee Drainage Basin, NW Ohio.

Land use is predominantly agriculture covering about 71% of the total basin (NRCS, 2005). Urban development and roads represent 10% of the area (NRCS, 2005). Soils are naturally poorly drained. Surface ditches and subsurface drains have been implemented to improve drainage. The basin area receives a relatively even distribution of precipitation throughout the year between 33 and 37 inches depending on the location. Soil erosion is a major problem in the basin causing NRCS to track conservation tillage practices in order to reduce the loss of sediment off cropland. Dredging in the Toledo Harbor, at the mouth of the Maumee River, is costing \$2.2 million per year due to sediment loading. Tourism and sport fishing are also directly related to water quality and the health of the lake associated with increased sedimentation (NRCS, 2005). Several watershed planning efforts have been undertaken with the Maumee Basin, especially in the Maumee Great Lakes Area of Concern (AOC) located in the lower (downstream) portion of the Maumee River and including several other rivers and streams discharging directly into the western basin of Lake Erie (Lawrence, 2003; Maumee RAP, 2006)

In October 2005, NRCS entered into a five year memorandum with the Geographic Information Science & Applied Geography (GISAG) Research Center of the Department of Geography and Planning at the University of Toledo as part of the Western Lake Erie Basin Water Resources Protection Plan. The University of Toledo is assisting NRCS in implementing the Maumee Watershed project, including sub watershed rapid resource assessments, watershed and area planning, on farm conservation planning and delivery of conservation technical assistance and conservation cost-share programs authorized by the 2002 Farm Bill. The tasks generally consist of: annually determining land cover and crop rotations via remote sensing techniques; combining Ohio, Indiana, and Michigan data layers to establish Maumee Watershed Project Area GIS data layers for the project; and establishing and maintaining a Maumee Watershed Project GIS Website to provide educational and informational outreach to share data and information with other project partners, resource managers, and the general public.

Crop type classification for the Maumee River project is being carried out using multitemporal Landsat 5 satellite imagery for each year of the agreement. Rumiko Hayase, a graduate student at the University of Toledo, gathered images from several time periods during the growing season to differentiate between the different crops types, in particular corn, soybeans, wheat and pasture. Once collected, the images underwent cloud screening and then were stacked in Erdas IMAGINE remote sensing software package. Training sets of crop type had been collected using a driving survey of the watershed and located with Global Positioning System (GPS) readings. These training sets were used to create spectral signatures in Erdas and then a supervised classification was performed using the Maximum Likelihood classifier.

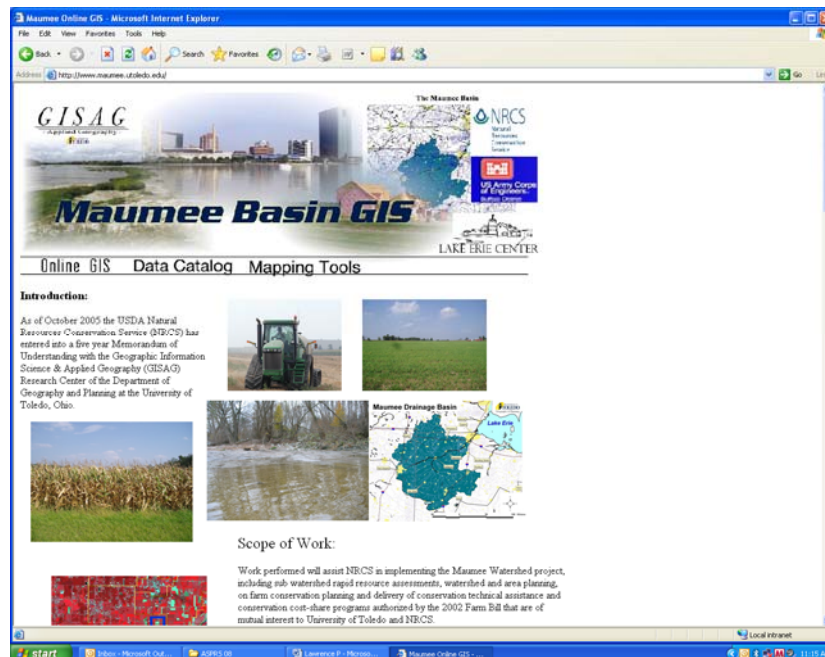
## **GIS DATABASE DEVELOPMENT**

University of Toledo graduate students, Katie Swartz, Philip Haney and David Dean have gathered spatial data layers from numerous sources to assemble and deliver GIS layers that cover the entire Maumee Watershed Project Area (Table 1). Some of the websites, where spatial data is freely available, are Soil Data Mart, Data Gateway (NRCS/USDA), Center for Geographic Information in Michigan, ODNR GIMS (Geographic Information Management Systems), Indiana Geological Survey (A GIS Atlas), United States Geological Survey (USGS), and Great Lakes Information Network (GLIN). Once the data was downloaded, it was necessary to evaluate its condition using ESRI ArcGIS software. Datasets for the basin needed to cover Ohio, Michigan, and Indiana. In some cases, there was only Ohio datasets available and therefore were not used. In other cases, there were security issues; therefore the data was not made public. Metadata, which contains descriptions of the spatial data sets, needed to be present because it indicates what has been done to create the data and who created it. The metadata would be updated with the project purpose and contact information. After deciding on datasets, geoprocessing techniques were performed. Clipping, merging, and reprojecting were necessary for datasets for map overlay.

The next step for the UT graduate students was to establish a GIS Website for the Maumee Watershed Project Area linking an ArcIMS site for data viewing. The website located at [www.maumee.utoledo.edu](http://www.maumee.utoledo.edu) contains background information on the project, spatial layers available for download through a password protected ftp site, and the ArcIMS available for viewing these spatial layers (Figure 2). The ability to download the information is a means to share the data with NRCS and project partners for the overall collaboration of the project. Training sessions have been implemented for partners and stakeholders to learn how to use this online system providing them ample opportunity to make suggestions and ask meaningful questions.

**Table 1. Main GIS Data Layers for the Maumee GIS Project**

- DEM (Digital Elevation Model)
- SSURGO Soils
- Stream Network
- Land Use Cover
- Watersheds (HUC units)
- Quaternary and Bedrock Geology
- Recreational Areas and Parks
- Various boundaries (states, cities, and counties)
- Wetlands
- Source Water Protection Areas
- Groundwater data
- 100 year floodplains
- Climatic Zones
- Soil Drainage
- Roads & Transportation



**Figure 2.** Maumee GIS Project Website (at [www.maumee.utoledo.edu](http://www.maumee.utoledo.edu)).

ArcIMS provides for the ability to access various layers at various scales of viewing. In this manner it is possible to compile many important spatial data layers into the GIS product and make each layer viewable and active at the appropriate scale. For example Figure 3 shows the view scale of the entire watershed area highlighting the individual river basins located within the watershed with additional layers including land use/land cover, 2005 NIAP imagery, ecoregions and state boundaries. Figure 4 illustrates a view at the scale of one river basin with display of the Land Capability Class and additional layers that include counties, zip codes, annual precipitation, farmland class and many others. Figure 5 displays the view at the local community scale highlighting SSURGO soil types and also can include Census blocks, streets, and several other additional data layers. ArcIMS also provides numerous data tools to assist with spatial analysis including query functions, distance calculations, and area measurements – all of which can be useful to potential users of the datasets.

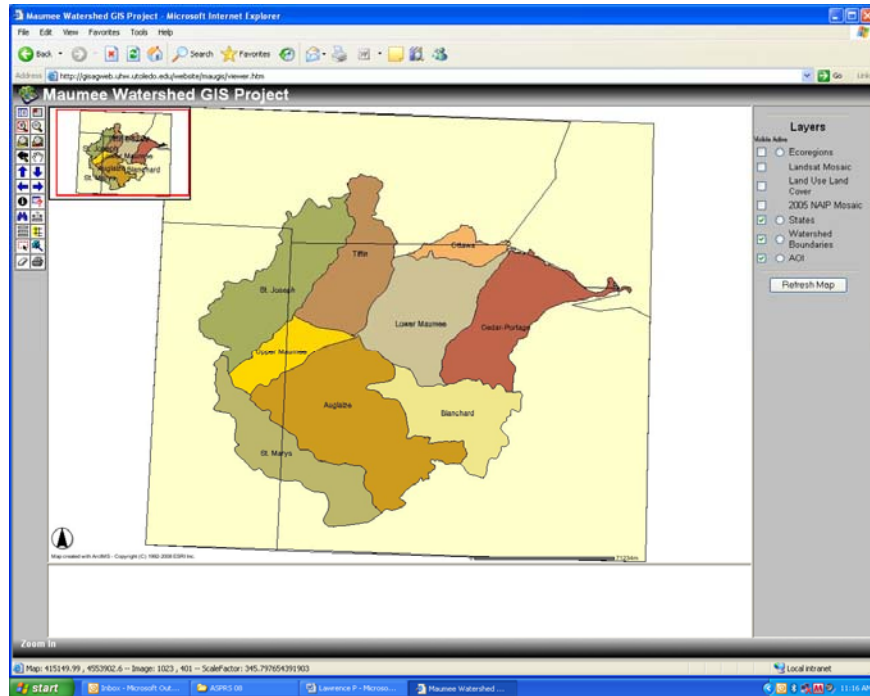


Figure 3. Screenshot of Maumees Watershed layer showing all river basin units.

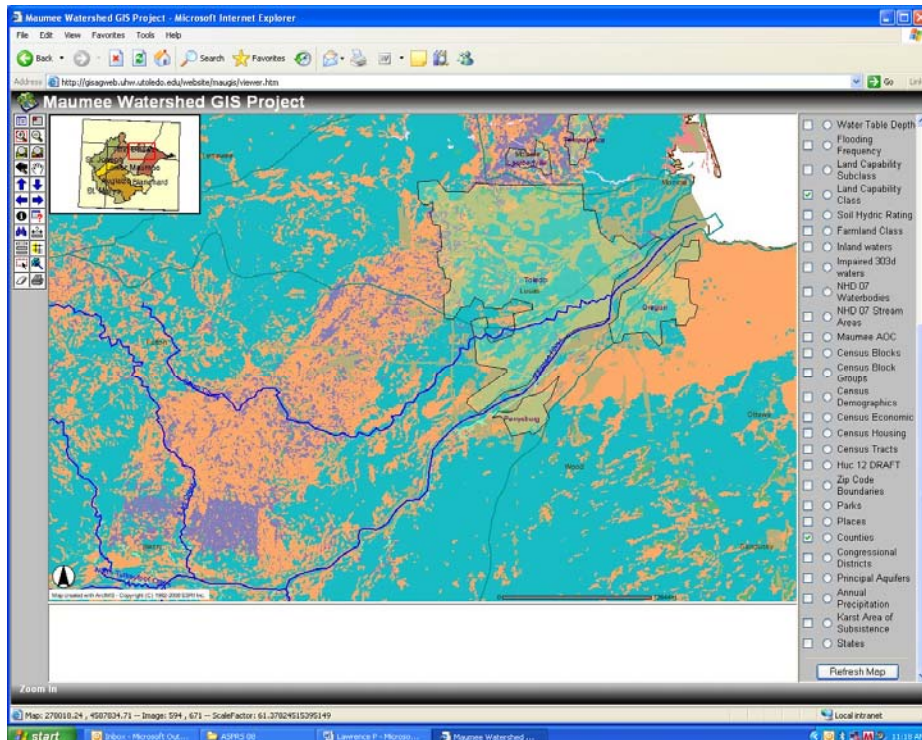
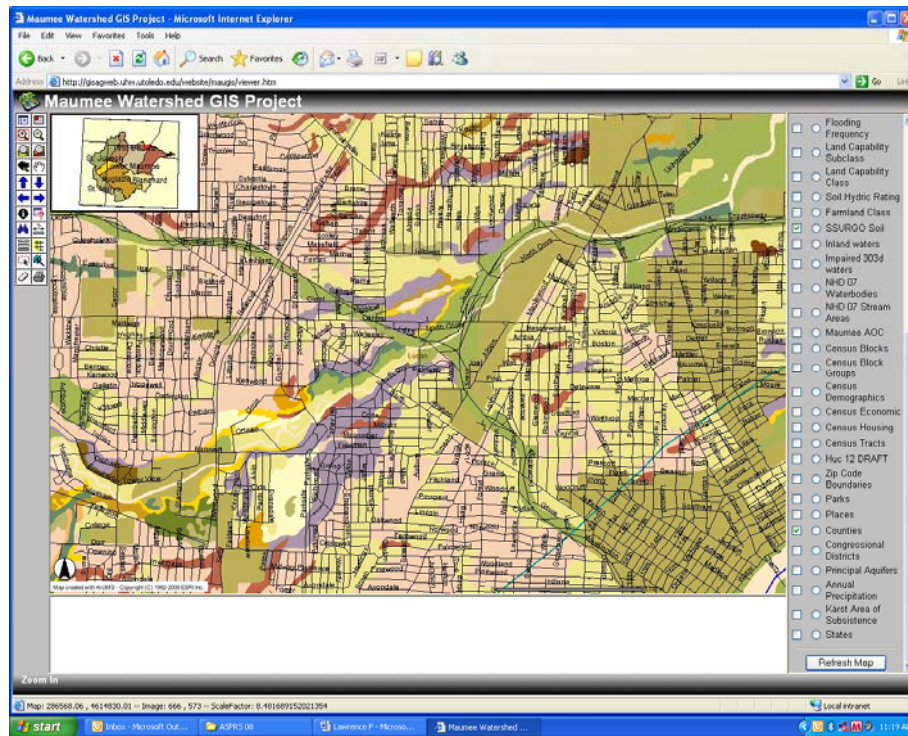


Figure 4. Screenshot of Maumees GIS ArcIMS product as viewing one river basin and highlighting the Land Capability Classification layer.



**Figure 5.** Screen shot of Maumee GIS ArcIMS product as viewing at the community scale and highlighting the SSURGO soils layer.

## REMOTE SENSING

Land cover and land use can be classified for a watershed region by utilizing a satellite image which covers a large area. Landsat Thematic Mapper can be used at the regional level with its 30m spatial resolution (Oetter et al., 2000; Jensen, 2005; Woodcock et al., 2001). The point of classification with remote sensing is to categorize every pixel in the image into themes or classes based on the reference spectral response of a band. Normally, multispectral data is applied since categories which can be separated in a channel are very limited. A commonly used method is the supervised classification technique which requires a prior knowledge of the study area, and pixels are classified based on the user-defined reference spectral data set. A maximum likelihood is used to categorize the pixels into defined classes as it takes into account a variance and a covariance to the computation and classifies pixels into a class to which the pixel has the highest probability of belonging (Jensen, 2005).

Many times, a good classification of land cover types can result from applying a single image. However, when land use types such as crop types are classified, it is useful to use multiple images wherein the dates are different. In the case of crop identification, the images include pre-growing season and growing season so that different spectral information can be extracted from the images which discriminate objects in the study area. For instance, winter wheat may be indistinguishable from bare soil in late fall when it is just planted and from alfalfa in spring due to a similar spectral response. However, by using two images, winter wheat can be identified by having a unique set of responses to bare soil in fall and alfalfa in spring (Lillesand et al., 2004). Therefore, it is important to know the study area to take advantage of the multi-temporal classification.

A land use and land cover layer was created for this study. Throughout the creation of the classified map, ERDAS IMAGINE 9.1 was utilized unless otherwise noted. The ground truth points used for 2005 were collected by the Department of Geography and Planning at the University of Toledo. TM images of path 20/row 31 used for the classification were acquired on May 4, August 8, and November 12 in 2005, which were downloaded from the OhioView website. Clouds and shadows in the images were removed by visual assessment. Removal of the urban area was also conducted by visual assessment using an urban area shapefile downloaded from the ESRI Census

Watch website (<http://www.esri.com/censuswatch>). The images were then stacked to perform the multi-temporal classification.

Crop types at 8775 points were checked by USDA personnel at the county level. Among these, 78% were either corn or soybean. A total of 150 points per class for the entire Maumee watershed were randomly selected as reference points, and the others were used as training samples. Out of the 150 points, 75 points per class fall into the study area and were used for accuracy assessment of the supervised classification for the study area. Normally, a minimum of 50 samples for each class is good enough for the accuracy assessment. However, when a study area is larger than 1 million hectare, the minimum number of the sample should be increased to 75 or 100, thus for this study, 75 samples were used.

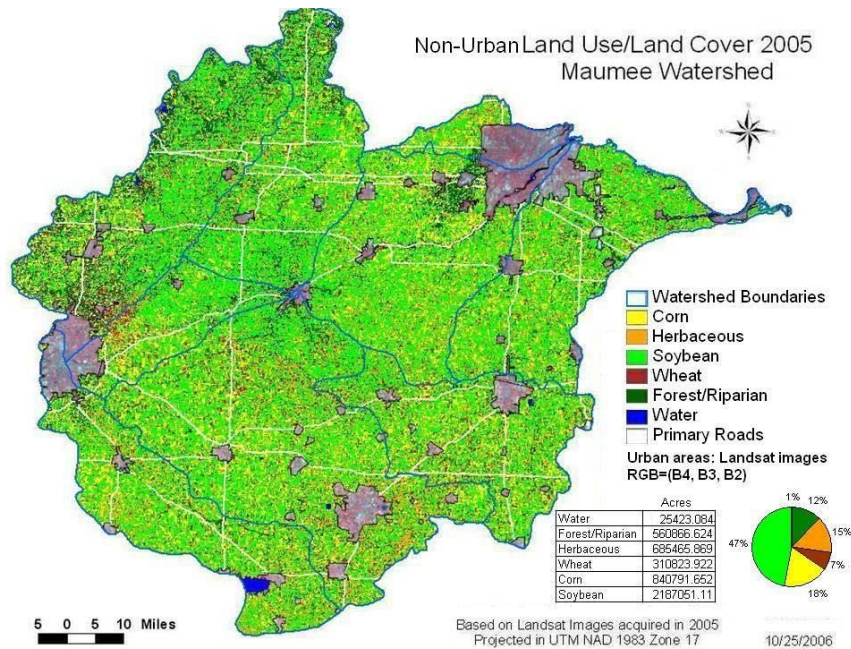
To perform a maximum likelihood supervised classification, a training set for each class of corn, soybean, hay, and wheat was created. By using the training samples, pixels were selected by using an Area of Interest (AOI) tool for each class. The training samples were visualized in different colors in terms of cardinal directions to consume less effort and time in collecting pixels. For each class, about 100 fields of pixels were collected. Those pixels were the reference for the computer to classify the entire image. For the forest and water classes, pixels were collected visually. Water is obvious in a satellite image by its shape and color of navy to light blue with bands 4, 3, and 2 as red, green, and blue in color composite. Forest is also visible and easily identifiable in an image by its texture and color of red with the same condition of the color composite as that used for the water.

After running the supervised classification, sieve and clump functions of ENVI were applied to the classified image except for the water and forest classes to smooth isolated pixels. The sieve function identifies an isolated pixel, and the clump function classifies the isolated pixel into the class which has the highest occurrence of its surrounding pixels. Some water bodies such as a river and some forest which are represented by a pixel or line of pixels were likely to be removed by the sieve-clump process, therefore the original water and forest classes were reserved.

Finally, an accuracy assessment was conducted for the classified image by using the reference points which were separated from the training sample at the beginning. The reference points were compared with the classified map to check to see if the reference field was classified correctly or not in ArcMap with the cardinal directions of the reference point visualized in a different color. This information was typed into Excel which has columns of reference point numbers and classified classes. For the forest and water class, random points were created by an accuracy assessment function, and they were visually assessed by using the satellite image with the color composition used for the creation of the training set described earlier in this section.

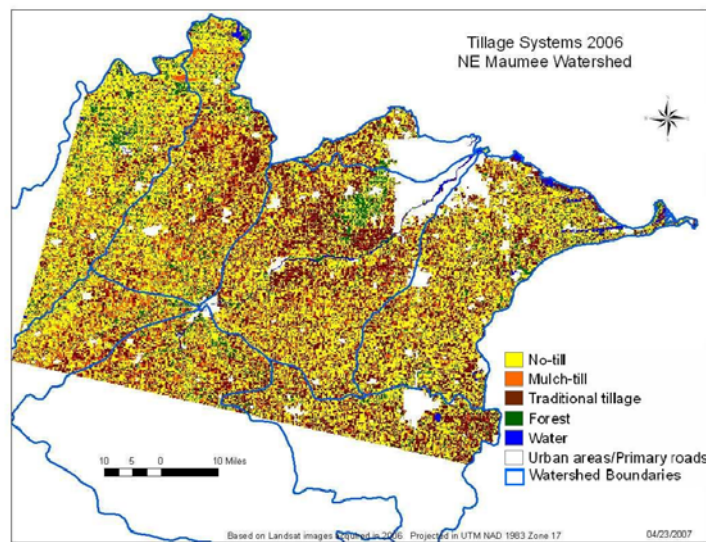
An error matrix with columns of reference classes and rows of classified classes was created. By using the matrix, overall accuracy was estimated by dividing the total amount of diagonal pixels by the total amount of all of the pixels used for the accuracy assessment. An accuracy of 85% or more overall accuracy is considered acceptable. The accuracy of each class was estimated. A producer's accuracy or an omission was calculated by dividing the total number of the correctly classified pixels in a certain class by the total number of pixels of that class derived from the reference data. A user's accuracy or commission errors is calculated by dividing the total number of correctly classified pixels in a certain class by the total number of pixels of that class derived from the classified data and tells how much the classified pixels match with the actual validation points. A further assessment was performed by conducting a kappa analysis, which indicates the accuracy between the classified map and the reference data and if accuracy was derived from an actual agreement between the two data or by chance. Actual agreement would be strong with a kappa value of more than 0.80, fair with a value between 0.80 and 0.40, and poor with a value below 0.40.

Figure 6 is the 2005 land cover/land use and crop type classification, with farmland with planted crops the most common land cover/land use. Soybean (47%) and corn (18%) crops are the most common rural land use/land cover types. Forest cover was found to represent 17% of the land area. The reference points of hay and wheat were small due to the limited amount of the ground truth points. Overall accuracy was 87.96% and the Kappa value was 0.82.



**Figure 6.** Land Cover/Land Use Classification with Crop Types, 2005.

Tillage classification was conducted in the same way as the crop types were classified. The image used for the classification was a TM image of path 20/row 31 acquired on May 23, 2006 and obtained from the OhioView website. The classes created for the map were traditional tillage (<30%), mulch-till (30-90%), no-till (<90%), forest, and water. Tillage systems for the 8927 points were checked by USDA personnel at the county level. Among those, 50% of the points were found to represent no-till agriculture in the watershed. An accuracy assessment was also conducted, and an error matrix was created. The resulting image of the supervised classification conducted for the tillage systems is shown in Figure 7. The accuracy was 81.33% and did not reach the acceptable guideline, however, it was the best result which was performed, and it will be used for the rest of the study. The Kappa value was 0.77, therefore the agreement between the classification map and the reference data was fair enough and close to a strong relationship, and the accuracy of the classification was less likely to happen by chance.



**Figure 7.** Classification of Tillage Systems.



## DISCUSSION

With the development of the Maumee GIS/Remote Sensing project several data gathering issues have been identified. Data may have been found for only one or two states and not complete for the entire Maumee Basin. Some contacts were not willing to share their data due to copyright or propriety issues. Some data is not being made public because of security reasons such as transportation, pipeline, and other infrastructure. For many of the GIS datasets no metadata attached to data sets making it very difficult to validate and assess the data source and its quality. The development of the spatial database is a continuing process. Feedback from users of the ArcIMS web based viewer is helpful in managing the website in order to make it more user friendly. Efforts continue in the updating of data sets with current information.

In early 2007 a survey was sent to 188 current and potential users of the Maumee Basin GIS/Remote Sensing project website ([www.maumee.utoledo.edu](http://www.maumee.utoledo.edu)) in order to assess the utility of the website and ArcIMS data viewer and to solicit feedback on future additions and improvements. A total of 55 individuals responded (29% return rate) with state and federal government agencies and NGOs/Universities having the largest number of responders. Over 41% of respondents indicated that they had been using GIS for more than 5 years. When asked about their use of GIS in watershed planning 60% indicated that they had created maps or data products and the most common sources of GIS data that they used included the Ohio Department of Natural Resources (ODNR) GIMS website, USGS, and NRCS Service Data Gateway. In accessing and using the Maumee Basin GIS/Remote Sensing project website over 90% rated the site as Good to Excellent and suggested improvements, including making more data readily available for download, providing clearer instructions for non GIS users, and providing links to metadata and source citation.

Ongoing searches are underway to secure and post additional new useful data sets and work continues in evaluating current data sets. Recent updates to the data sets include transect data collected during 2007 on crops for validation/training data for land cover analysis, assembling data sets in response to severe flooding and impacts along the Blanchard River in August 2007, collection of the 2007 Landsat scenes for the preparation of the next land use, crop type and tillage analysis, acquisition of one foot orthophotos for the watershed (2006), collection of the 2006 NAIP and LiDAR imagery available for a portion of the Maumee Basin. Current and future tasks underway include compiling field survey data from 2007 for crop type and tillage assessments, analysis of 2007 land cover from Landsat (including accuracy assessment and % cover types), development of tile surface creation workflow to assist in creating a bare earth DSM, and to process the LiDAR and NAIP imagery into ArcIMS.

## CONCLUSIONS

The Maumee GIS/Remote Sensing Project has created an array of useful products to assist with various watershed planning initiatives underway within the basin including projects undertaken by the Western Lake Erie Basin Partnership, USDA NRCS, and Army Corp of Engineers. The GIS database has been provided on request to various parties to assist with the preparation of watershed studies, rapid assessments, crop inventories, sediment modeling, and in response to flooding events. As further progress is made in determining the critical watershed issues and prioritizing future projects, programs and efforts within the basin, the GIS and remote sensing materials will be of continued importance. The project website, with GIS data layers and the land use/land cover mapping from remote sensing, provides many important opportunities for public outreach, teaching and the creation of unique map based products for a variety of watershed projects within the Maumee Basin. With the ongoing development of watershed based planning within the Maumee Basin by a variety of agencies and organizations these spatial data sources will be increased value in plan development.

## ACKNOWLEDGEMENTS

Work undertaken under this project has been funded by a Memorandum of Understanding between the University of Toledo Department of Geography and Planning GISAG Research Center and the USDA National Resource Conservation Service (NRCS) for 2005-2010. Dr. Kevin Czajkowski and Dr. Patrick L. Lawrence serve as the project principal investigators. James Coss and Tim Ault provided technical assistance as research associates. Graduate students David Dean, Katie Swartz, Phil Haney, and Rumiko Hayase completed the GIS and remote sensing components.

## REFERENCES

- Al-Abed, N., Abdulla, F., and Khayarah, A. A. (2005). GIS-hydrological models for managing water resources in the Zarqa River basin, *Environmental Geology*, 47:405-411.
- He, C. (2003). Integration of geographic information systems and simulation model for watershed management, *Environmental Modeling & Software* 18: 809-813.
- Jensen, J. R. (2005). *Introductory Digital Image Processing: A Remote Sensing Perspective (3rd ed.)*, Pearson Prentice Hall, Upper Saddle River, NJ.
- Kelsey, H., Porter, D. E., Scott, G., Neet, M., and White, D. (2004). Using geographic information systems and regression analysis to evaluate relationships between land use and fecal coliform bacterial pollution, *Journal of Experimental Marine Biology and Ecology*, 298:197-209.
- Lawrence, P. (2003). Science and the Management of the Great Lakes coast: Case Study of the Maumee Area of Concern, In: *Proceedings of the 2003 Canadian Coastal Conference*, Canadian Coastal Science and Engineering Association, Queens University, Kingston, Ontario.
- Lillesand, T. M., Kiefer, R. W., Chipman, J. W. (2004). *Remote sensing and Image Interpretation. (5th ed)*, John Wiley Ltd, New York.
- Maumee RAP (2006). Maumee Area of Concern Stage 2 Watershed Restoration Plan (Draft), Ohio EPA Northwest District Office, Bowling Green, OH. [www.maumeerap.org](http://www.maumeerap.org).
- McKinney, D. C. and Cai, X. (2002). Linking GIS and water resources management models: an object-oriented method, *Environmental Modeling & Software*, 17:413-425.
- Natural Resources Conservation Service (2005). Western Lake Erie Basin Water Resources Protection Plan: Ohio, Indiana and Michigan, Retrieved March 8, 2007, from Natural Resources Conservation Service Web site: [http://www.oh.nrcs.usda.gov/programs/erie\\_basin/erie\\_basin\\_project.html](http://www.oh.nrcs.usda.gov/programs/erie_basin/erie_basin_project.html).
- Montgomery, D. R., Grant, G. E. and Sullivan, K. (1995). Watershed analysis as a framework for implementing ecosystem management, *Water Resources Bulletin*, 31: 369-386.
- Nelson, L. S. and L. F. Weschler. (1998). Institutional Readiness for Integrated Watershed Management: The Case of the Maumee River, *The Social Science Journal*, 35(4): 565-576.
- Oettter, D. R., Cohen, W. B., Berterretche, M., Maiersperger, T. K., & Kennedy, R. E. (2000). Land cover mapping in an agricultural setting using multiseasonal Thematic Mapper data, *Remote Sensing of Environment*, 76: 139-155.
- Perciasepe, R. (1994). EPAs watershed approach to ecosystem management, *Fisheries*, 19:4.
- Schreier, H., and S. Brown. (2001). Scaling issues in watersheds assessments, *Water Policy*, 3: 475-489.
- Voinov, A. and R. Costanza. (1999). Watershed management and the Web, *Journal of Environmental Management*, 56: 231-245.
- Woodcock, C., Macomber, S. A., Pax-Lenny, M., & Cohen, W. B. (2001). Monitoring large areas for forest change using landsat: generalization across space, time and land sensors, *Remote Sensing of Environment*, 78:194-203.