

HANOVER COUNTY PUBLIC SCHOOLS

is a student-centered, community-driven school district that assures a quality education for success in a changing world.

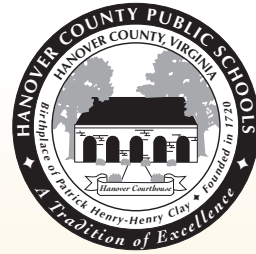


2014

SCHOOL PROFILE:

Atlee High School

Hanover County Public Schools



ELEMENTARY SCHOOLS

Battlefield Park Elementary (K-5)

5501 Mechanicsville Turnpike
Mechanicsville, VA 23111
723-3600

Beaverdam Elementary (K-5)

15485 Beaverdam School Road
Beaverdam, VA 23015
798-5929

Cold Harbor Elementary (K-5)

6740 Cold Harbor Road
Mechanicsville, VA 23111
723-3620

Cool Spring Elementary (K-5)

9964 Honey Meadows Road
Mechanicsville, VA 23116
723-3560

Elmont Elementary (K-5)

12007 Cedar Lane
Ashland, VA 23005
365-8100

Henry Clay Elementary (K-2)

310 South James Street
Ashland, VA 23005
365-8120

John M. Gandy Elementary (3-5)

201 Archie Cannon Drive
Ashland, VA 23005
365-4640

Kersey Creek Elementary (K-5)

10004 Learning Lane
Mechanicsville, VA 23116
723-3440

Laurel Meadow Elementary (K-5)

8248 Lee Davis Road
Mechanicsville, VA 23111
723-2040

Mechanicsville Elementary (K-5)

7425 Mechanicsville Elementary Drive
Mechanicsville, VA 23111
723-3640

Pearson's Corner Elementary (K-5)

8290 New Ashcake Road
Mechanicsville, VA 23116
723-3660

Pole Green Elementary (K-5)

8993 Pole Green Park Lane
Mechanicsville, VA 23116
365-4700

Rural Point Elementary (K-5)

7161 Studley Road
Mechanicsville, VA 23116
723-3580

South Anna Elementary (K-5)

13122 Walton's Tavern Road
Montpelier, VA 23192
749-4222

Washington-Henry Elementary (K-5)

9025 Washington-Henry Drive
Mechanicsville, VA 23116
723-2300

MIDDLE SCHOOLS

Chickahominy Middle (6-8)

9450 Atlee Station Road
Mechanicsville, VA 23116
723-2160

Liberty Middle (6-8)

13496 Liberty School Road
Ashland, VA 23005
365-8060

Oak Knoll Middle (6-8)

10295 Chamberlayne Road
Mechanicsville, VA 23116
365-4740

Stonewall Jackson Middle (6-8)

8021 Lee-Davis Road
Mechanicsville, VA 23111
723-2260

HIGH SCHOOLS

Atlee High (9-12)

9414 Atlee Station Road
Mechanicsville, VA 23116
723-2100

Hanover High School (9-12)

10307 Chamberlayne Road
Mechanicsville, VA 23116
723-3700

Lee-Davis High (9-12)

7052 Mechanicsville Pike
Mechanicsville, VA 23111
723-2200

Patrick Henry High (9-12)

12449 W. Patrick Henry Road
Ashland, VA 23005
365-8000

The Georgetown School (6-12)

10000 Learning Lane
Mechanicsville, VA 23116
723-3460

The Hanover Center for Trades and Technology (9-12)

10002 Learning Lane
Mechanicsville, VA 23116
723-2020

FROM THE SUPERINTENDENT

Dear Parents and Community Friends:

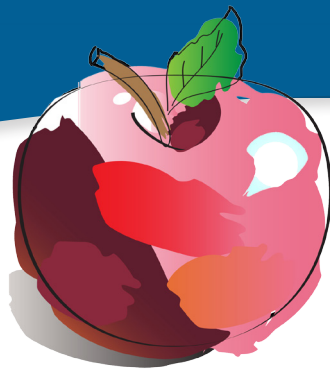
The School Profile Fall 2014 issued by the Hanover County School Board for each school in the county complements the Virginia School Report Card prepared by the Virginia Department of Education. The Profile offers a comprehensive picture of the school by providing highlights of our students, our school, our teachers, and our parents. Unless otherwise noted, all data reported are from the 2013-2014 school year. We want to present a broader, more detailed view of your school—data about achievement tests, activities, technology, community involvement, and other attributes. You are welcome to visit or call any of our schools or the State Board of Education to obtain additional information, discuss a suggestion, or share a concern.

Thank you for your strong support of our school system.

Sincerely,

Jamelle S. Wilson
Superintendent of Schools

The Hanover County School Board does not unlawfully discriminate on the basis of age, sex, race, color, religion, disability or national origin in its employment practices or educational programs and activities. The Director for Special Education is designated as coordinator for non-discrimination for access and implementation of programs under Section 504 and the Americans with Disabilities Act. The Assistant Superintendent of Human Resources is designated as coordinator for non-discrimination regarding personnel matters under Section 504 and the Americans with Disabilities Act. To contact Hanover County Public schools, call (804) 365-4500.



Our Students

International Baccalaureate (IB) Program

(Grades 11-12)

	SCHOOL	COUNTY
Students Enrolled	208	645
Percent	28%	23%
Number of IB Diploma Candidates	41	95

Advanced Placement (AP) (Grades 11-12)

	SCHOOL	COUNTY
Students Enrolled		
Number	429	1,162
Percent	58%	41%

Dual Enrollment Program (Grades 11-12)

	SCHOOL	COUNTY
Students Enrolled		
Number	46	240
Percent	3%	8%

SAT Test Scores

	SCHOOL	COUNTY
Number of Students Tested	264	1,011
Verbal	538	517
Math	541	517
Writing	513	499

Students Dropping Out (2012 - 2013)

	SCHOOL	COUNTY
Number	12	51
Percent (based Fall enrollment)	0.74%	0.86%

Students Receiving Diplomas

	SCHOOL	COUNTY
Total Number of Graduates	340	1,475
International Baccalaureate Diplomas		
Number	41	95
Percent	12%	6%
Advanced Diplomas		
Number	208	873
Percent	61%	59%
Standard Diplomas		
Number	77	451
Percent	23%	31%
Modified Standard Diplomas		
Number	11	35
Percent	3%	2%

Continuing Plans for Graduates

	SCHOOL	COUNTY
Attending 4-Year College		
Number	233	804
Percent	69%	55%
Attending 2-Year College		
Number	39	331
Percent	11%	22%
Other Continuing Education Plans		
Number	13	54
Percent	4%	4%

National Merit Recognition

	SCHOOL	COUNTY
Number	3	5

Students Receiving Scholarships

	SCHOOL	COUNTY
Number	176	442
Percent (based on graduates)	52%	30%

Students Participating in Virginia High School League (VHSL) Athletics

	SCHOOL	COUNTY
Number	900	3,064
Percent	55%	51%

Students Participating in Extracurricular Activities

	SCHOOL	COUNTY
Number of Activities	77	
Number of Participants	1,300	8,832
Percent Participation	79%	86%

Students with English as Second Language

	SCHOOL	COUNTY
Number	<10	205

Students Receiving Special Education Services

	SCHOOL	COUNTY
Number	203	2,433
Percent (based on enrollment)	12%	14%

Students Receiving Gifted/Talented Services

	SCHOOL	COUNTY
Number	329	2,413
Percent (based on enrollment)	20%	13%

Our School



Instructional Time

93% of time used for core instruction; 7% of time for student academic, athletic and organization activities. Percentages are based on an instructional day of 390 minutes excluding 30 minutes for lunch.

Enrollment (Fall 2013)

	SCHOOL	COUNTY
Number of Students	1,638	17,961
Number of Students (EOY grades 11-12)	739	2,852

Computers

	SCHOOL	COUNTY
Number	877	11,468
Number of Students per Computer	1.9	1.6

Volunteers

	SCHOOL	COUNTY
Number of Volunteers	271	9,054
Number of Volunteer-hours	636	75,781
Number of Volunteer-hours per Student	0.4	4.2

Library

	SCHOOL	COUNTY
Book Inventory	13,292	322,449
Number of Books per Student	26.3	18.0
Books Circulated	30,243	486,060
Classes Taught by Librarian	900	19,805
Student Use of Library Independently	3,620	224,804

\$ Expenditures

HANOVER COUNTY TOTAL EXPENDITURES	HANOVER COUNTY PER PUPIL	VIRGINIA PER PUPIL
HCPS FY 2013: \$167,555,378	\$9,137	\$11,257
HCPS FY 2012: \$170,017,921	\$9,166	\$10,969

Our Teachers

Staff Members

	SCHOOL	COUNTY
Number of Teachers	106.7	1,322
Teachers with Advanced Degrees	62.0	791
Percent	58%	60%

Our Community

Overall Parent Satisfaction (Annual Parent Survey)

	AGREE	DISAGREE	NO OPINION
Instruction is provided at appropriate level.	92.3%	7.7%	0%
Students receive a quality education.	91.7%	8.3%	0%
This is the type of school I want my child to attend.	90.5%	8.9%	0.6%

PTA/PTO/PTSO Membership (High School)

	SCHOOL	COUNTY
Number	593	2,949
Percent (based on enrollment)	33%	49%

SCHOOL HIGHLIGHTS

- The Class of 2014 was awarded over \$2 million dollars in scholarships and awards.
- Recognized by U.S. News & World as a Silver Medalist for being one of the best high schools in Virginia; ranked 33rd within Virginia as one of the best high schools because of the number of students participating in AP & IB programs.
- Over 75% of our students pursue an Advanced Studies Diploma which may include coursework in AP, IB, or Advanced classes.
- Atlee High School was recognized as a 2013 – 2014 Blue Star School by WISE (Working In Support of Education). To qualify for this recognition a school must have achieved a 75% passing rate on the WISE Financial Literacy Certification Test and have either a majority of students on a given grade level take the test or have the students who took it achieve an average score of 80% or higher.

