



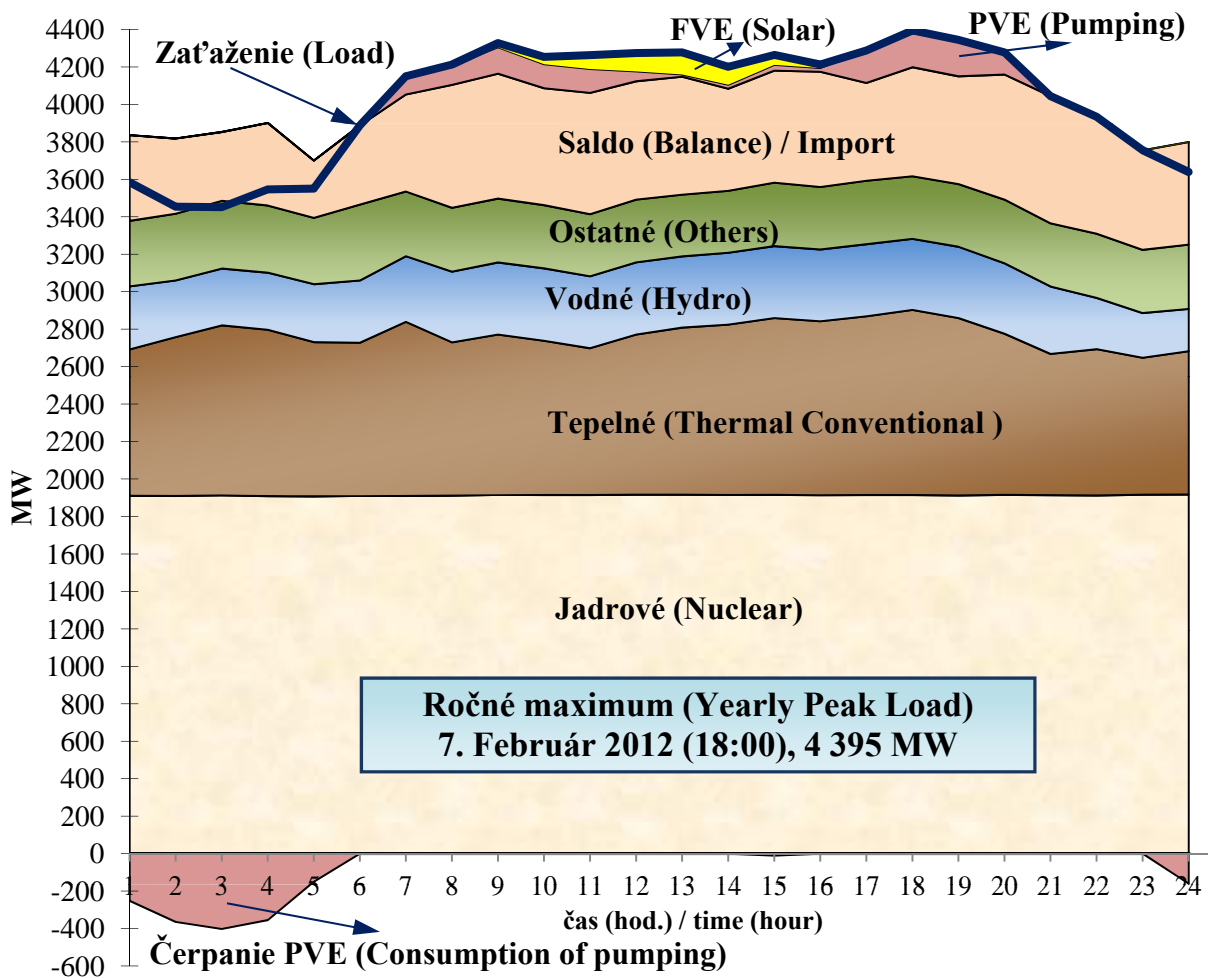
Slovenský Elektroenergetický Dispečing  
National Control Centre of Slovakia

2012

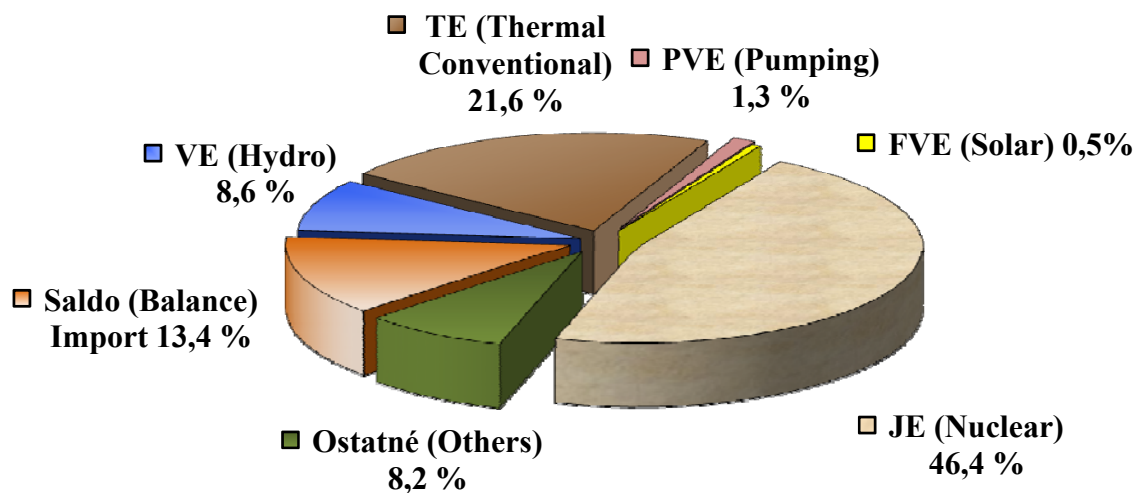


SLOVENSKÁ ELEKTRIZAČNÁ PRENOSOVÁ SÚSTAVA, a.s.

## POKRYTIE ZAŤAŽENIA V DEŇ ROČNÉHO MAXIMA Load and Use of Sources on Day of the Yearly Peak

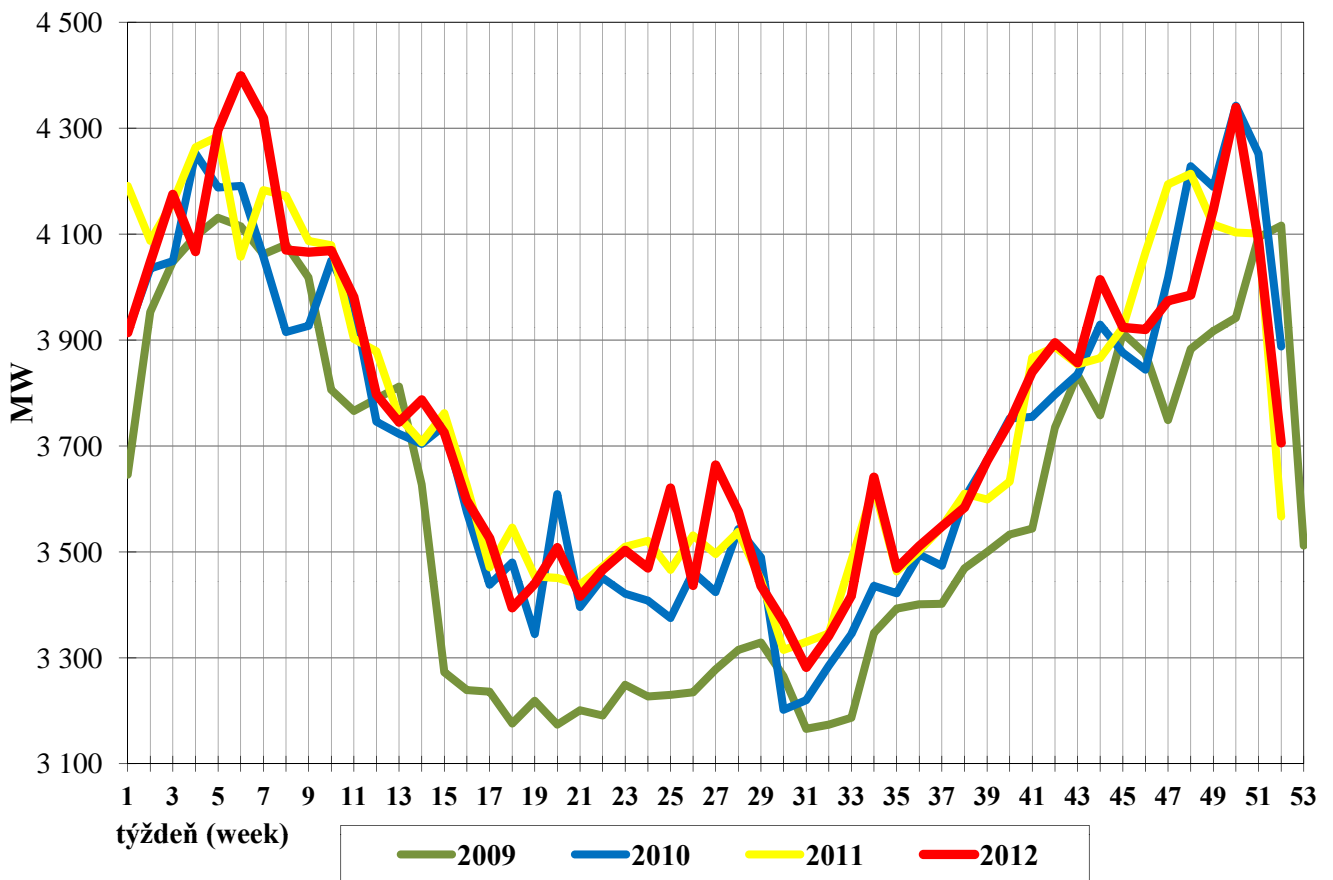


## PODIEL ZDROJOV V DNI ROČNÉHO MAXIMA Share of Sources on Day of the Yearly Peak

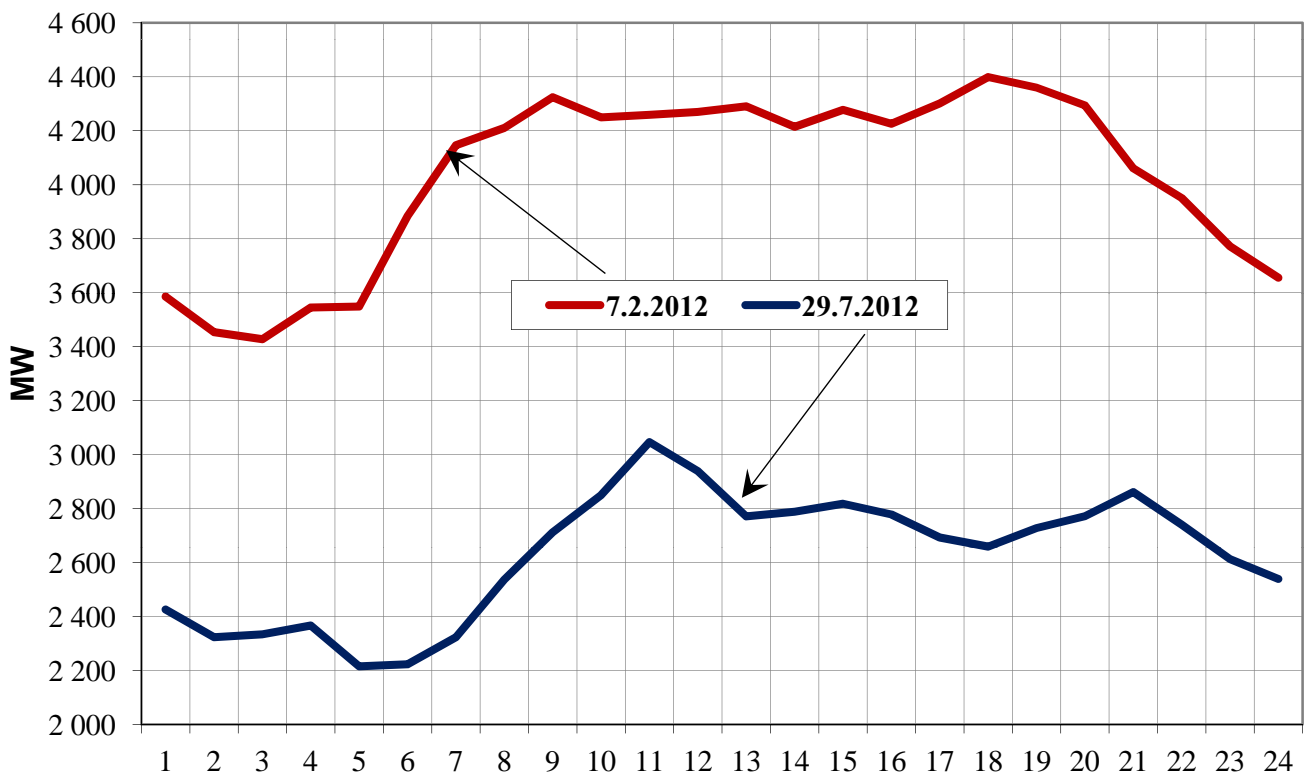


<b>7. Február 2012 (Brutto)</b>	
Výroba (Production):	85 607 MWh
Saldo (Balance) Import:	13 298 MWh
Spotreba / Consumption:	98 905 MWh

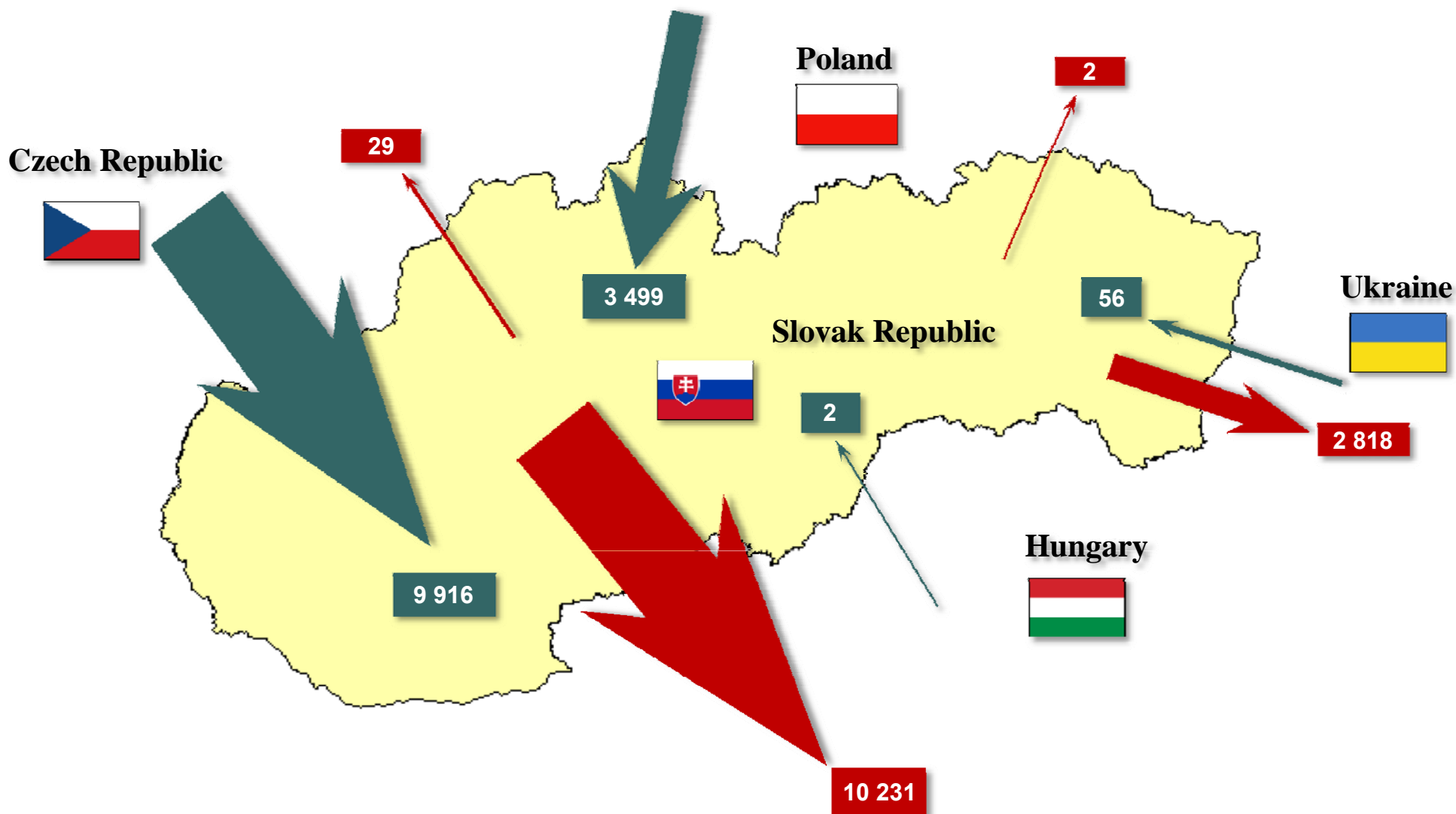
## TÝŽDENNÉ MAXIMÁ ZAŤAŽENIA Weekly Peak Loads



## PRIEBEH ZAŤAŽENIA V DŇOCH ROČNÉHO MAXIMA A MINIMA v 2012 Load Curves on Days of the Yearly Minimum and Peak in 2012

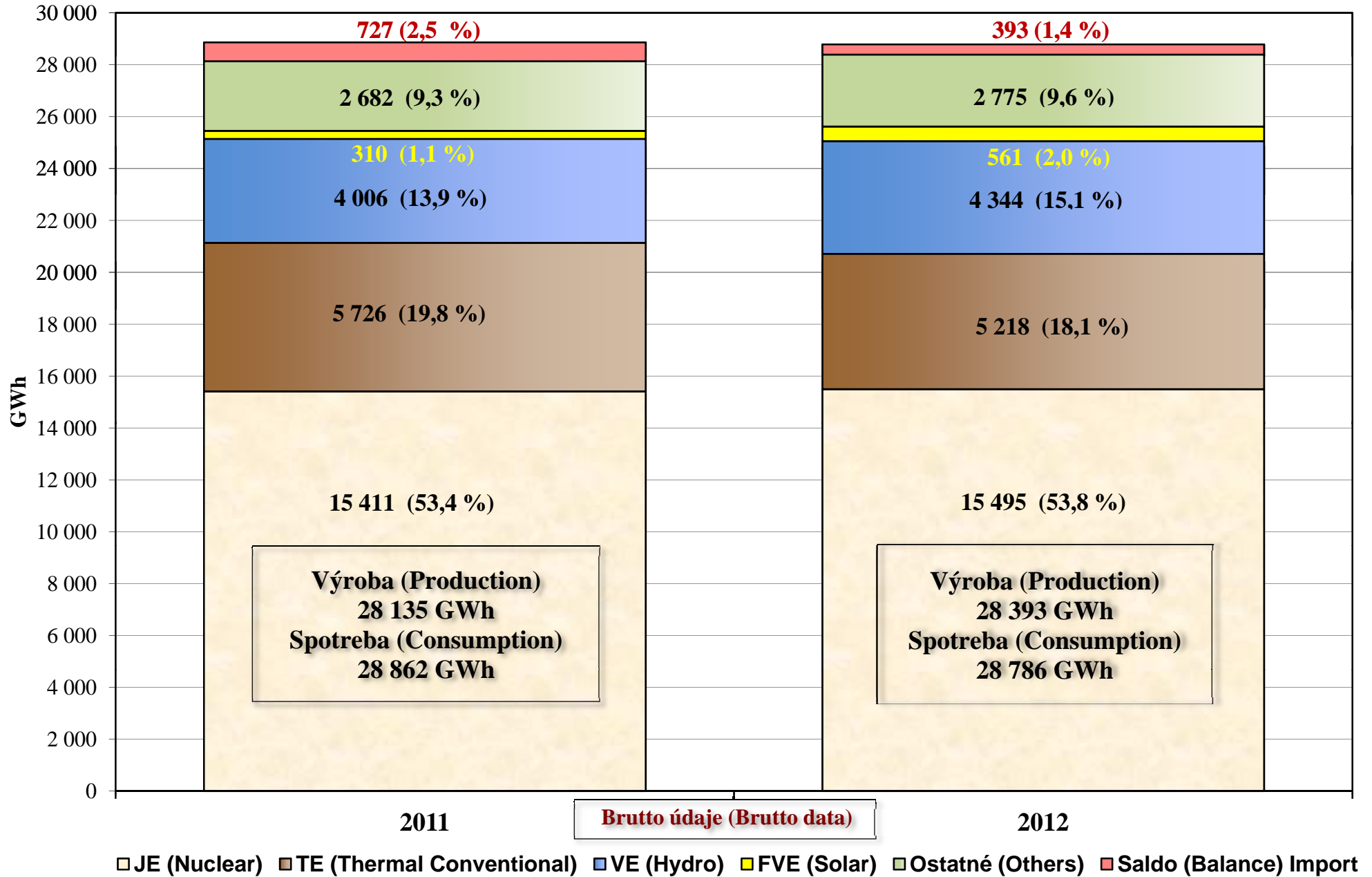


**NAMERANÉ CEZHRANIČNÉ PRENOSY ELEKTRINY ES SR ZA ROK 2012 v GWh**  
**Metered (physical) Cross-Border Flows of Electricity in the year 2012 in GWh**

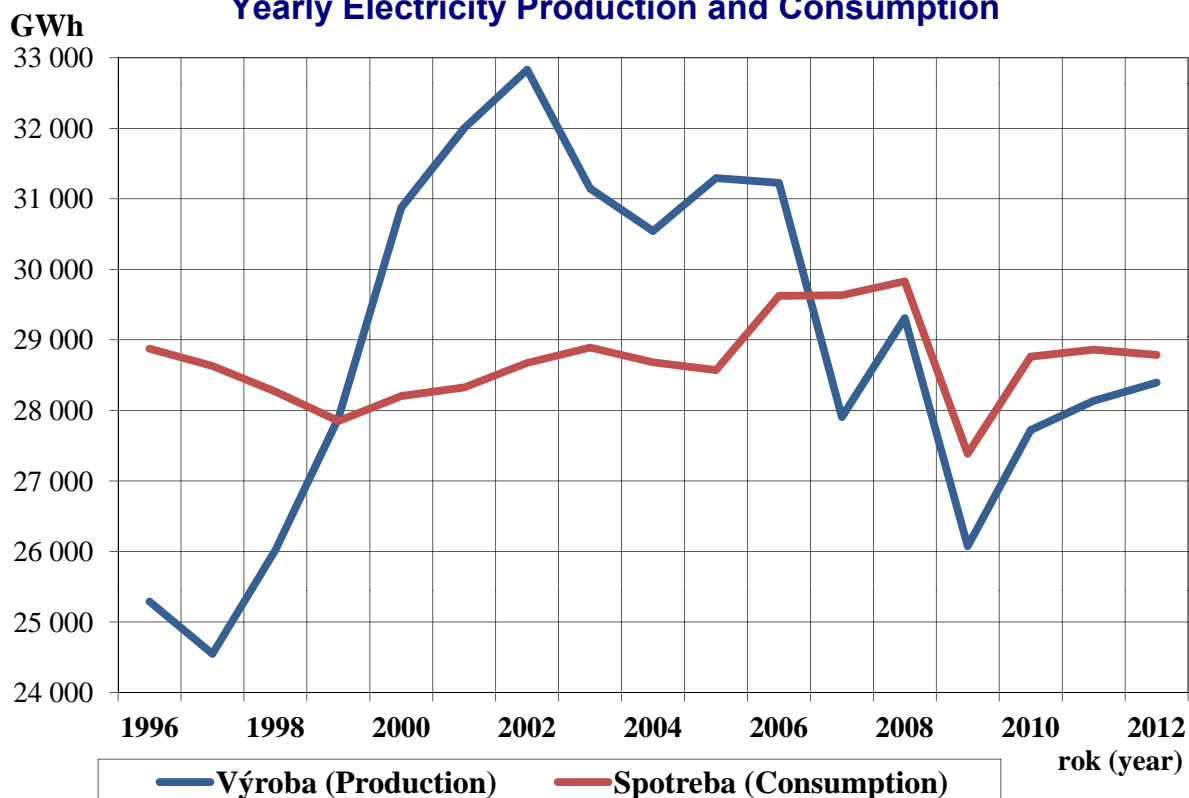


**Σ Import: 13 472 GWh, Σ Export: 13 079 GWh, Saldo (Balance): Import 393 GWh**

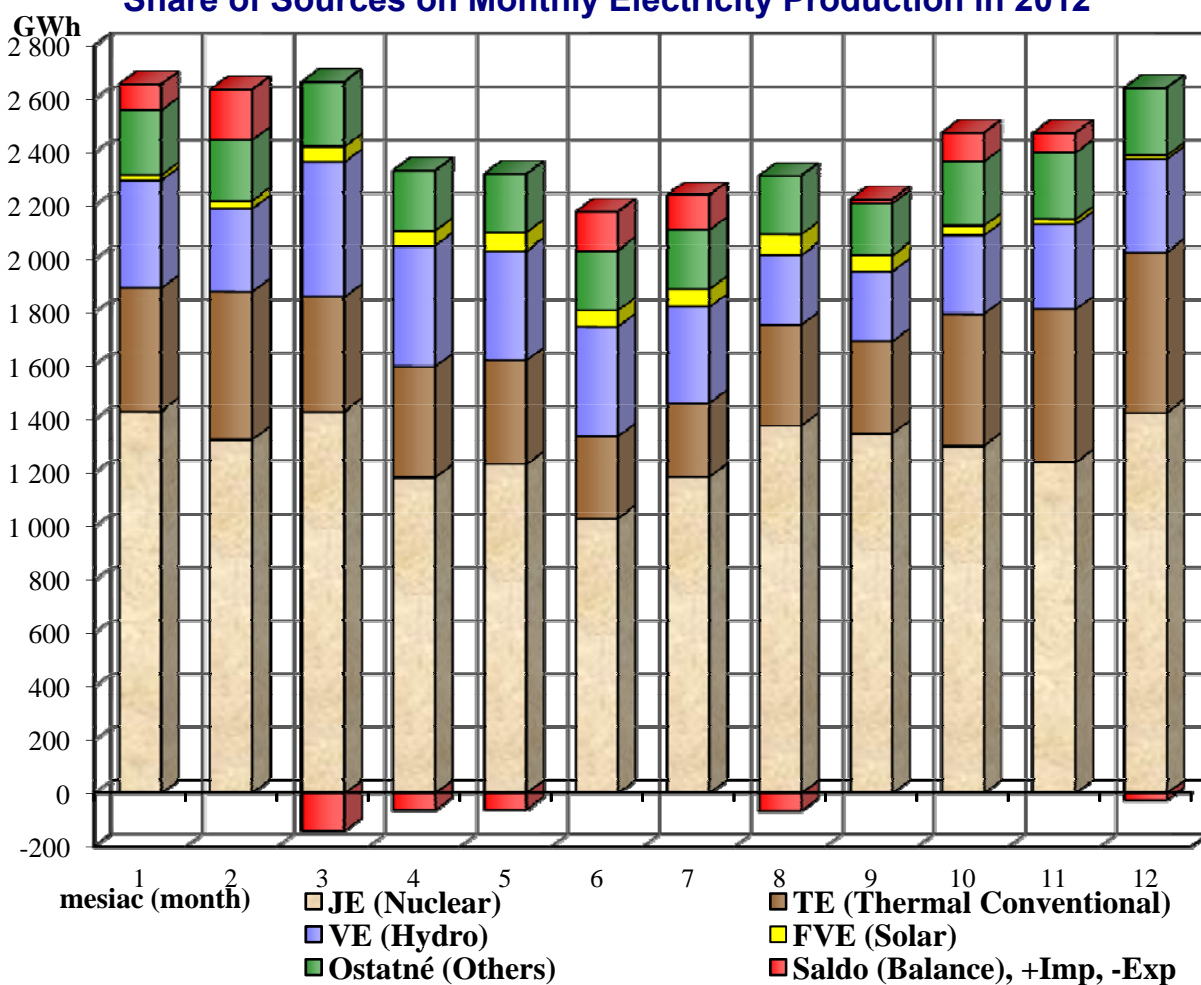
**PODIEL ZDROJOV NA VÝROBE ELEKTRINY V ROKU 2011 a 2012**  
**Share of Sources on Electricity Production in the Year 2011 and 2012**



## ROČNÁ VÝROBA A SPOTREBA ELEKTRINY Yearly Electricity Production and Consumption

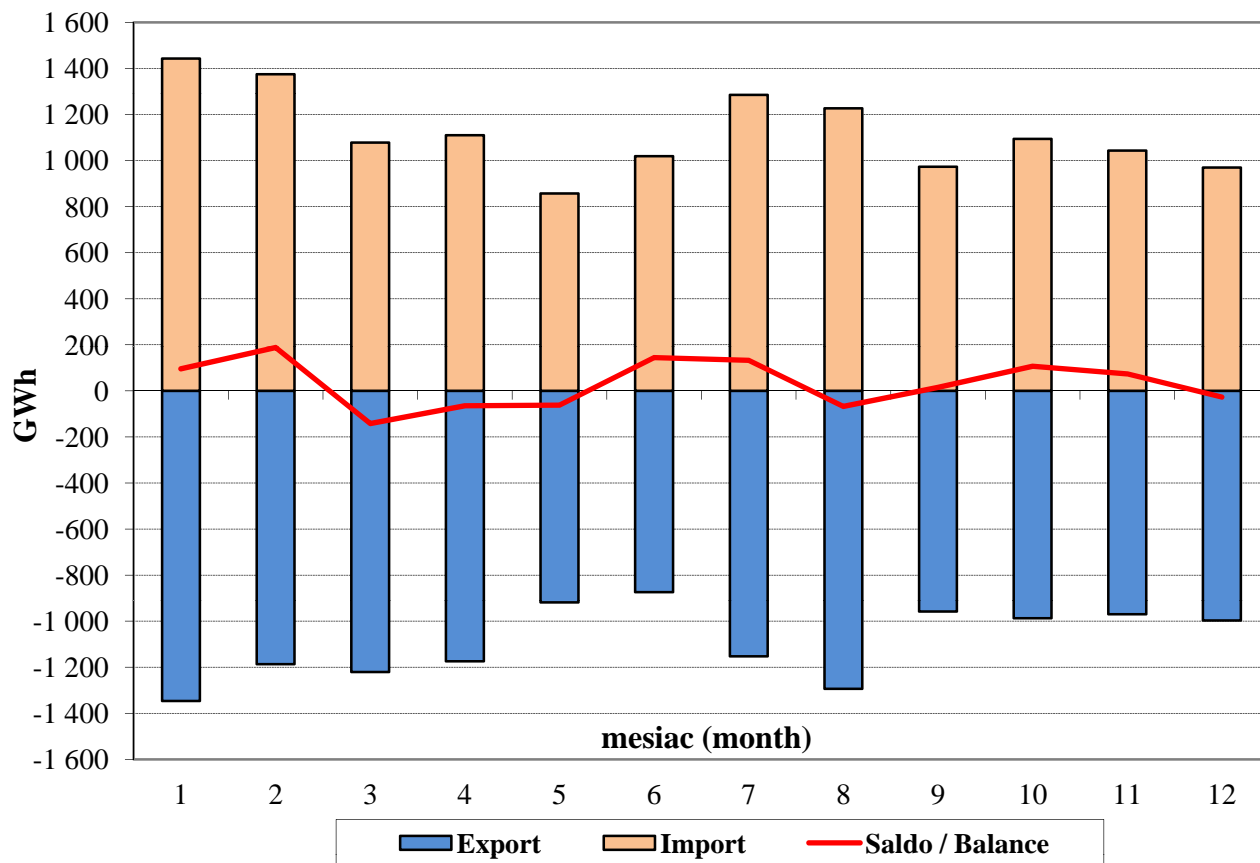


## PODIEL ZDROJOV NA MESAČNEJ VÝROBE ELEKTRINY v r. 2012 Share of Sources on Monthly Electricity Production in 2012

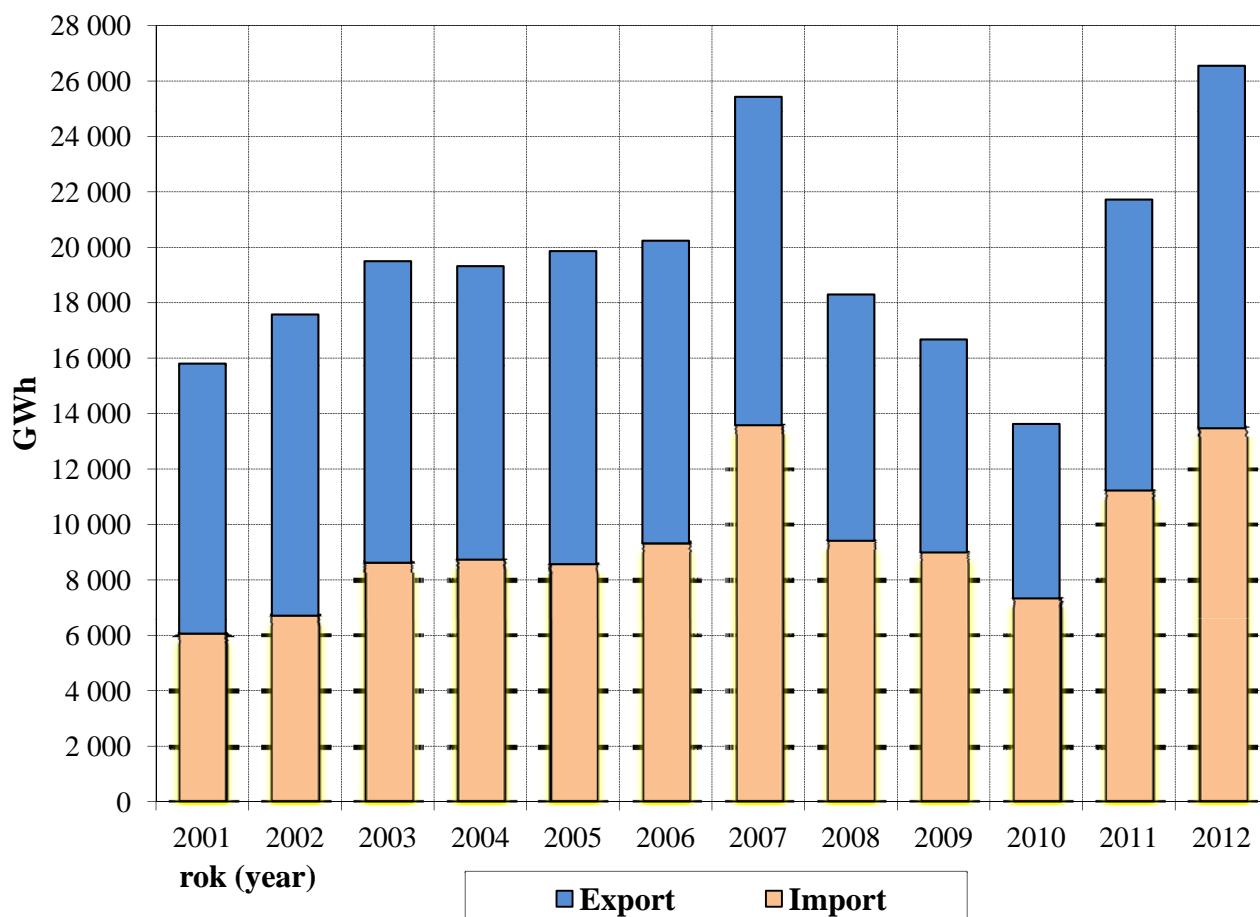




## NAMERANÉ MESAČNÉ CEZHRANIČNÉ PRENOSY ES SR Monthly Metered Cross-Border Flows of Slovakia

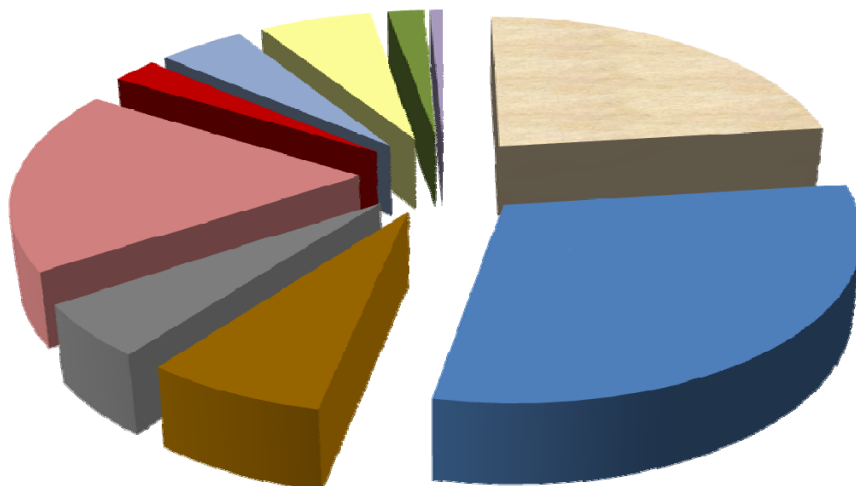


## NAMERANÉ ROČNÉ CEZHRANIČNÉ PRENOSY ES SR Metered Yearly Cross-Border Flows of Slovakia



## INŠTALOVANÝ VÝKON ELEKTRÁRNÍ ES SR Installed Capacity of Power plants in Slovakia

Rozdelenie podľa Palív Shared by Fuels	Výkon (MW) Power (MW)	Podiel (%) Share (%)	
Jadrové (Nuclear)	1 940	23,0	
Vodné (Hydro)	2 534	30,1	
Hnedé uhlie (Lignite)	599	7,1	Fosilné palivá Fossil fuels
Čierne uhlie (Hard coal)	440	5,2	
Zemný plyn (Natural gas)	1 540	18,3	
Nafta (Oil)	210	2,5	
Mix palív (Mixed fuels)	401	4,8	
Fotovoltické (Photovoltaic)	524	6,2	Obnoviteľné zdroje Renewable sources
Biomasa (Biomass)	168	2,0	
Bioplyn (Biofuel)	60	0,7	
Veterné (Wind)	3	0,0	
Ostatné (Other)	12	0,1	
<b>Spolu</b>	<b>8 431</b>	<b>100,0</b>	



<span style="color: #e67e22;">■</span> Jadrové (Nuclear)	<span style="color: #3498db;">■</span> Vodné (Hydro)
<span style="color: #8e44ad;">■</span> Hnedé uhlie (Lignite)	<span style="color: #7f7f7f;">■</span> Čierne uhlie (Hard coal)
<span style="color: #e91e63;">■</span> Zemný plyn (Natural gas)	<span style="color: #c0392b;">■</span> Nafta (Oil)
<span style="color: #5dade2;">■</span> Mix palív (Mixed fuels)	<span style="color: #f1c40f;">■</span> Fotovoltické (Photovoltaic)
<span style="color: #27ae60;">■</span> Biomasa (Biomass)	<span style="color: #9b59b6;">■</span> Bioplyn (Biofuel)

## PRENOSOVÁ SÚSTAVA SLOVENSKEJ REPUBLIKY Transmission System of Slovak Republic

Celkový transformačný výkon	<b>10 610 MVA</b>	Total transformation capacity
Vedenia 400 kV	<b>1 870 km</b>	400 kV Lines
Vedenia 220 kV	<b>867 km</b>	220 kV Lines
Rozvodne 400 kV	<b>18</b>	400 kV Substations
Rozvodne 220 kV	<b>8</b>	220 kV Substations
Transformátory 400/220 kV	<b>1 400 MVA</b>	400/220 kV Transformers
Transformátory 400/110 kV	<b>7 210 MVA</b>	400/110 kV Transformers
Transformátory 220/110 kV	<b>2 000 MVA</b>	220/110 kV Transformers