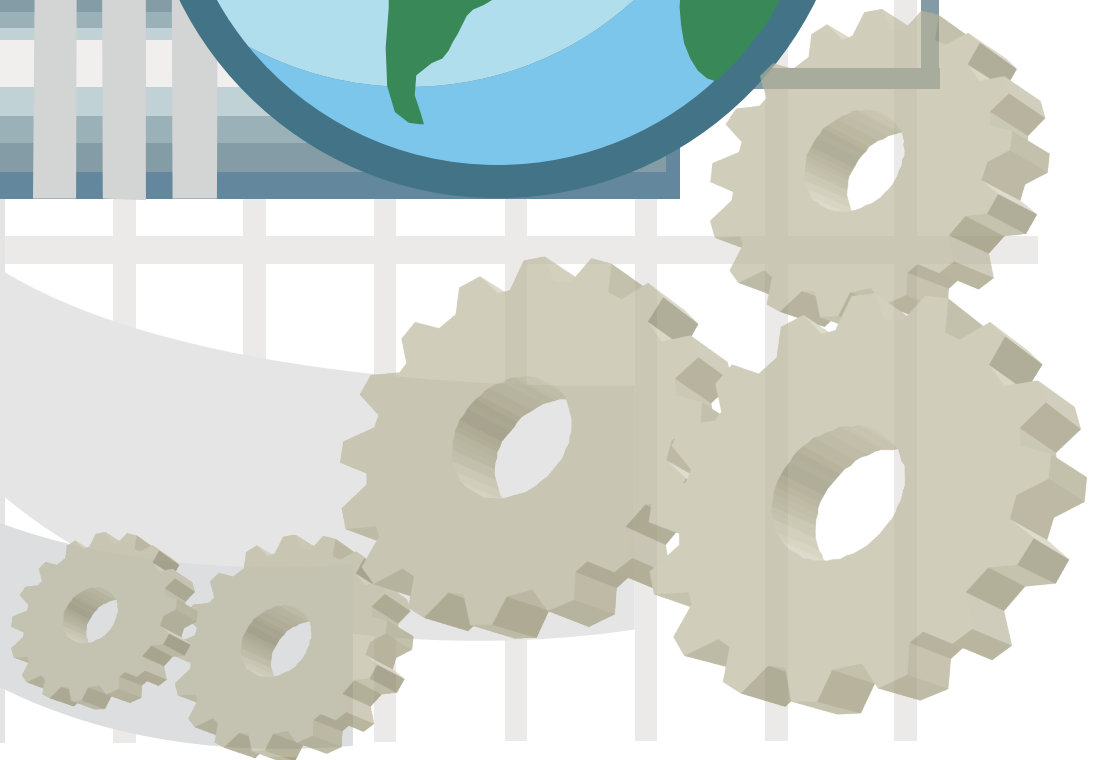




# Configuration Manual For SCADA

► *iFIX v4.0*



# Table of Contents

<b>Chapter 1 iFIX 4.0 .....</b>	<b>3</b>
1-1 OPC Server .....	4
1-2 Connect OPC Client to OPC Server through iFIX 4.0.....	5

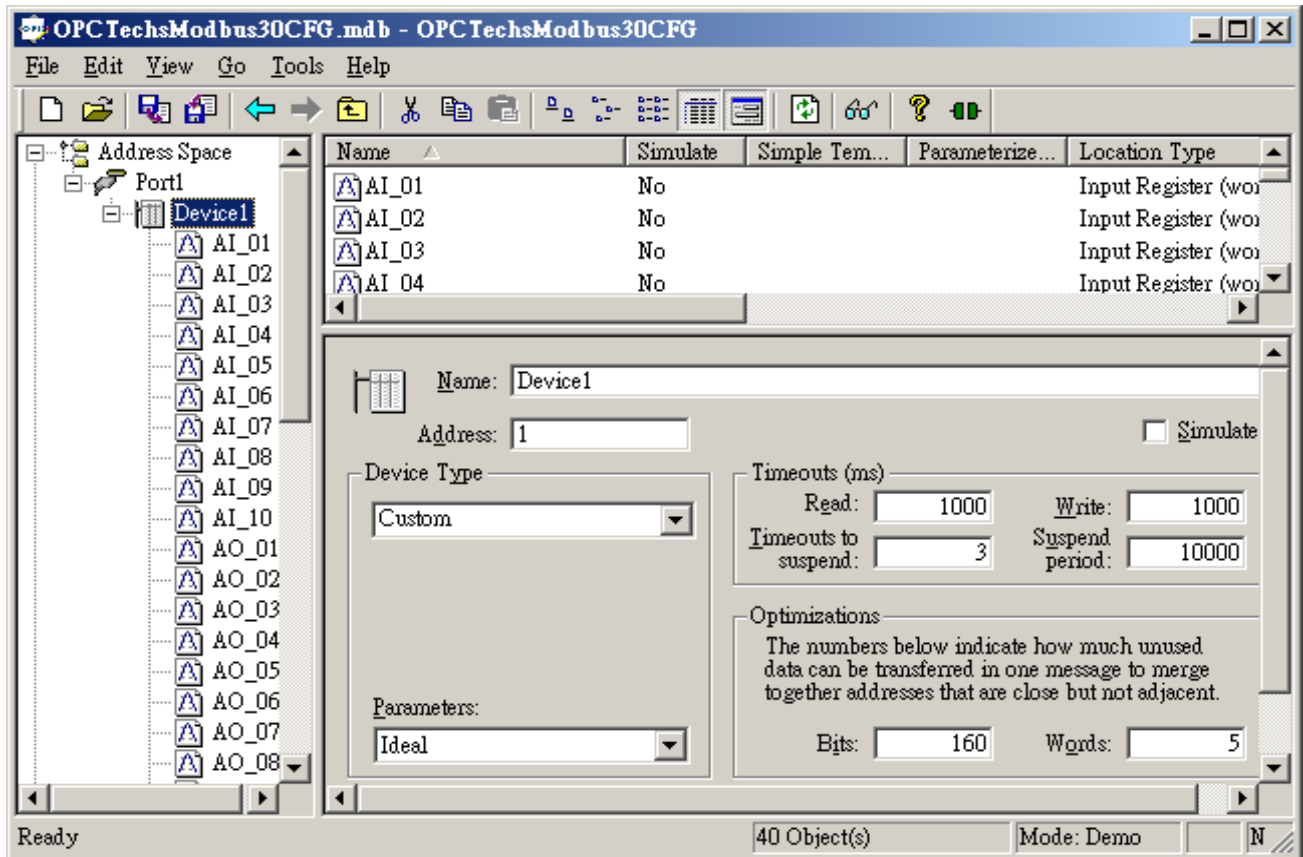
# Chapter 1

---

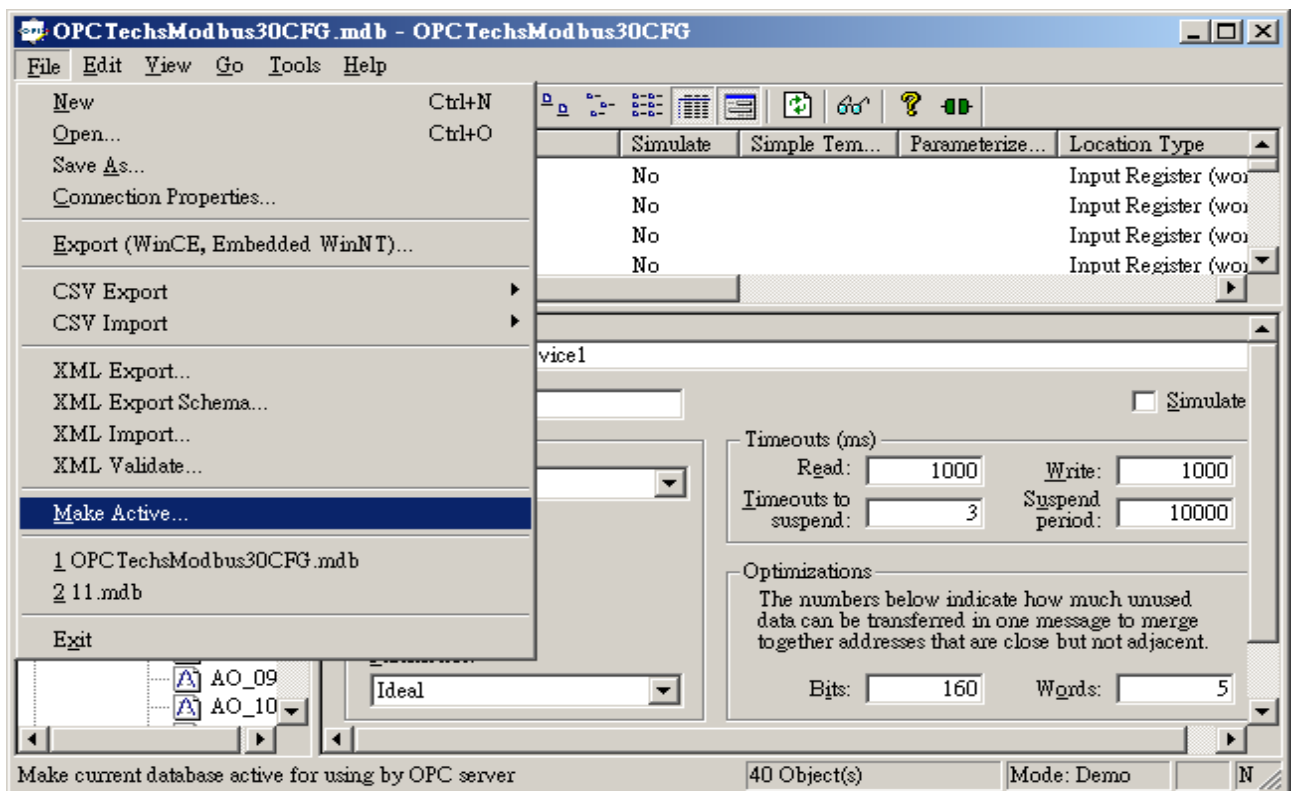
**iFIX 4.0**

## 1-1 OPC Server

Please create tags according to the Configuration Manual.

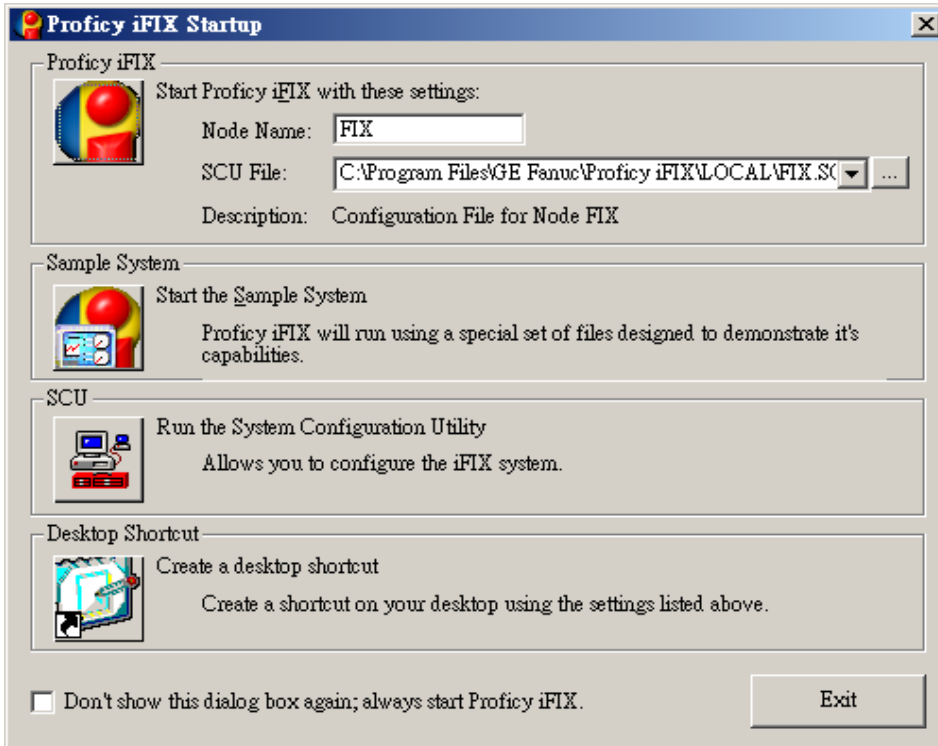


Later, click [ File ] → [ Make Active ] to activate new created configuration file.

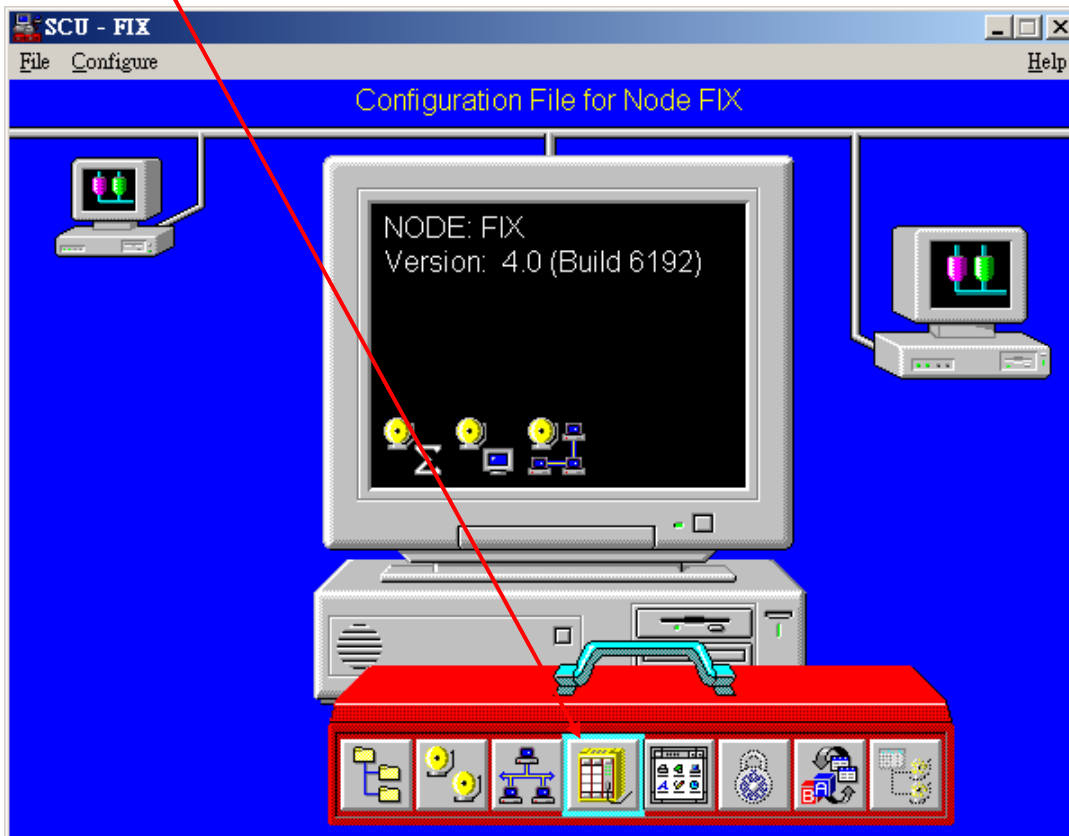


## 1-2 Connect OPC Client to OPC Server through iFIX 4.0

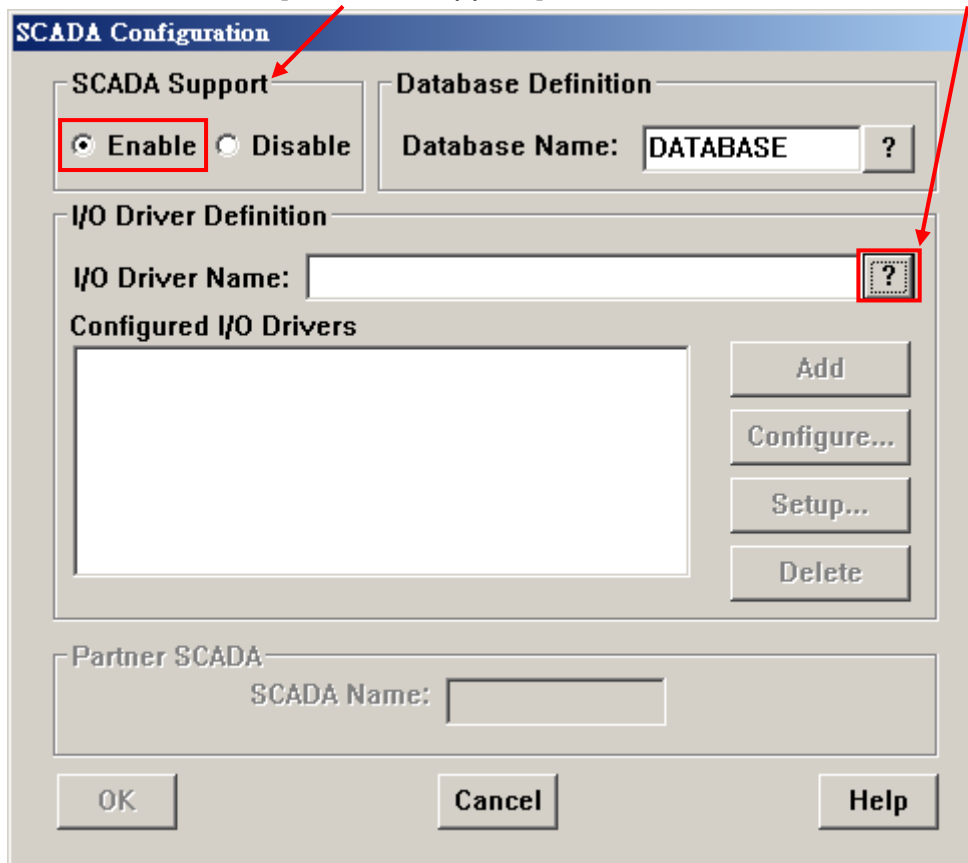
Start iFIX 4.0. Select [ SCU ] to set up OPC Client.



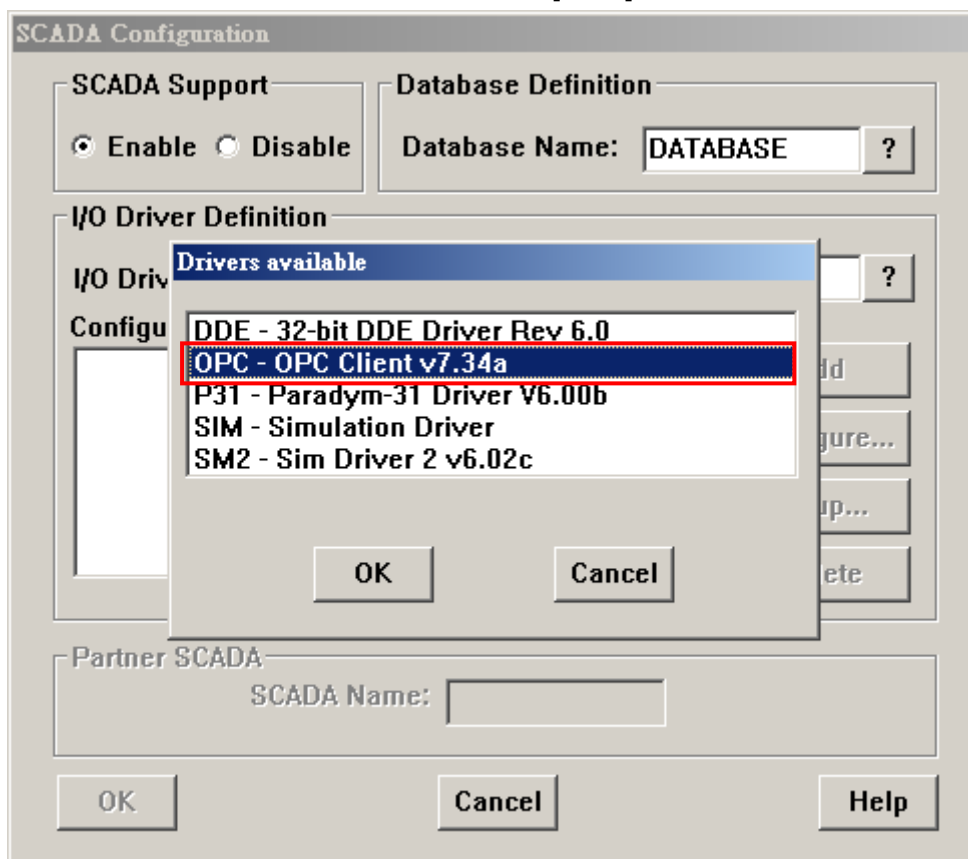
### SCADA Configuration



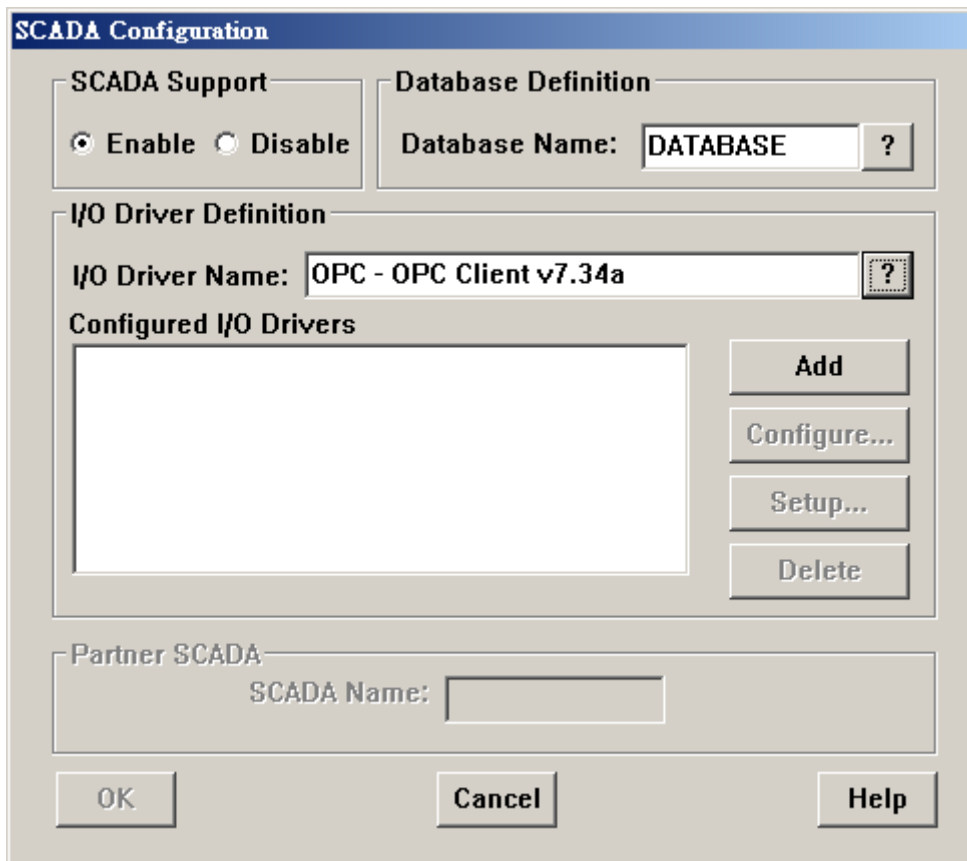
Select "Enable" on [ SCADA Support ], and then click the " ? " nearby [ I/O Driver Name ].



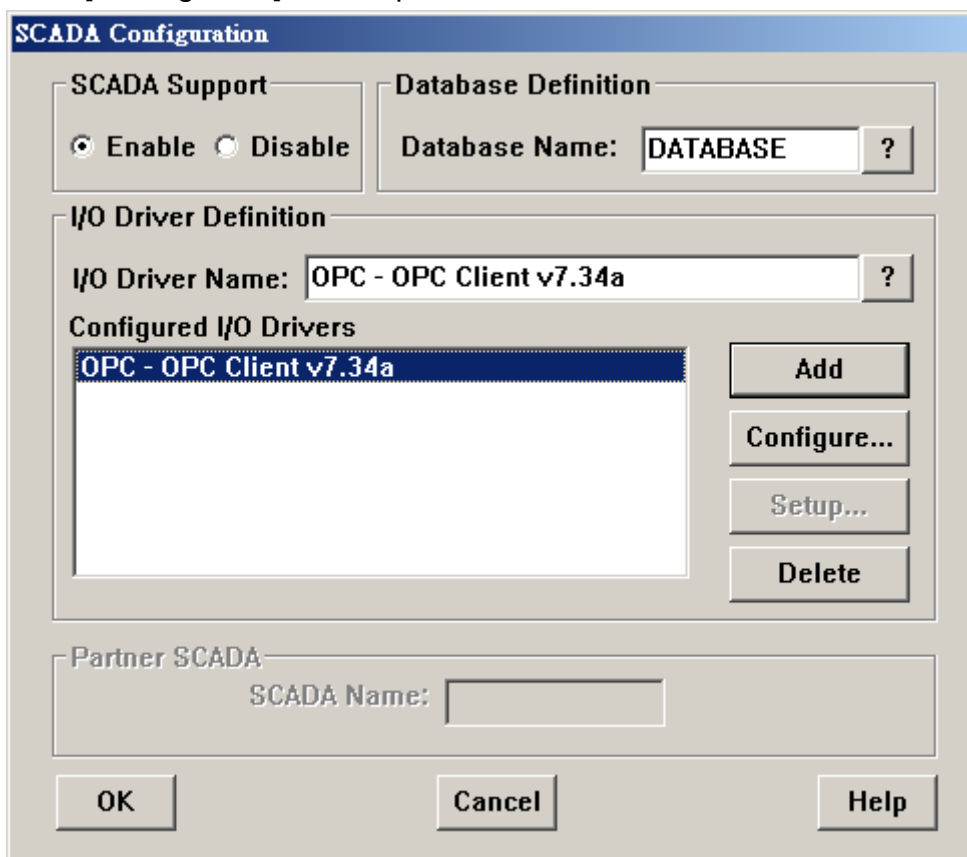
Select "OPC Client v7.34a"; then click [ OK ].



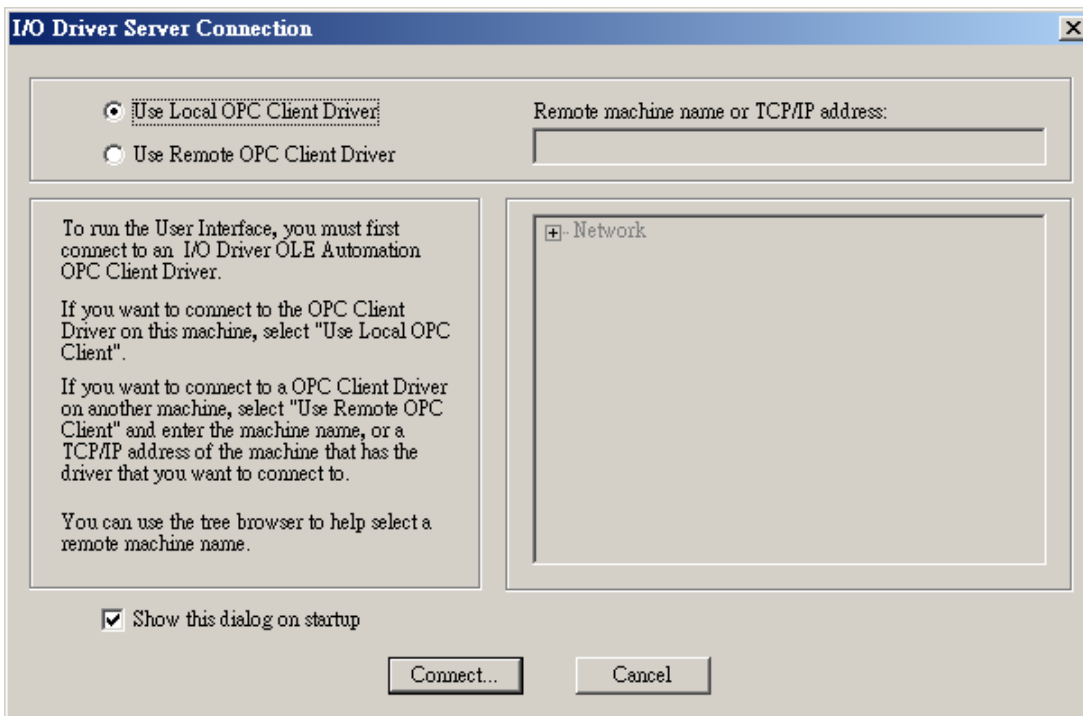
Click [ Add ] to add the I/O Driver you need.



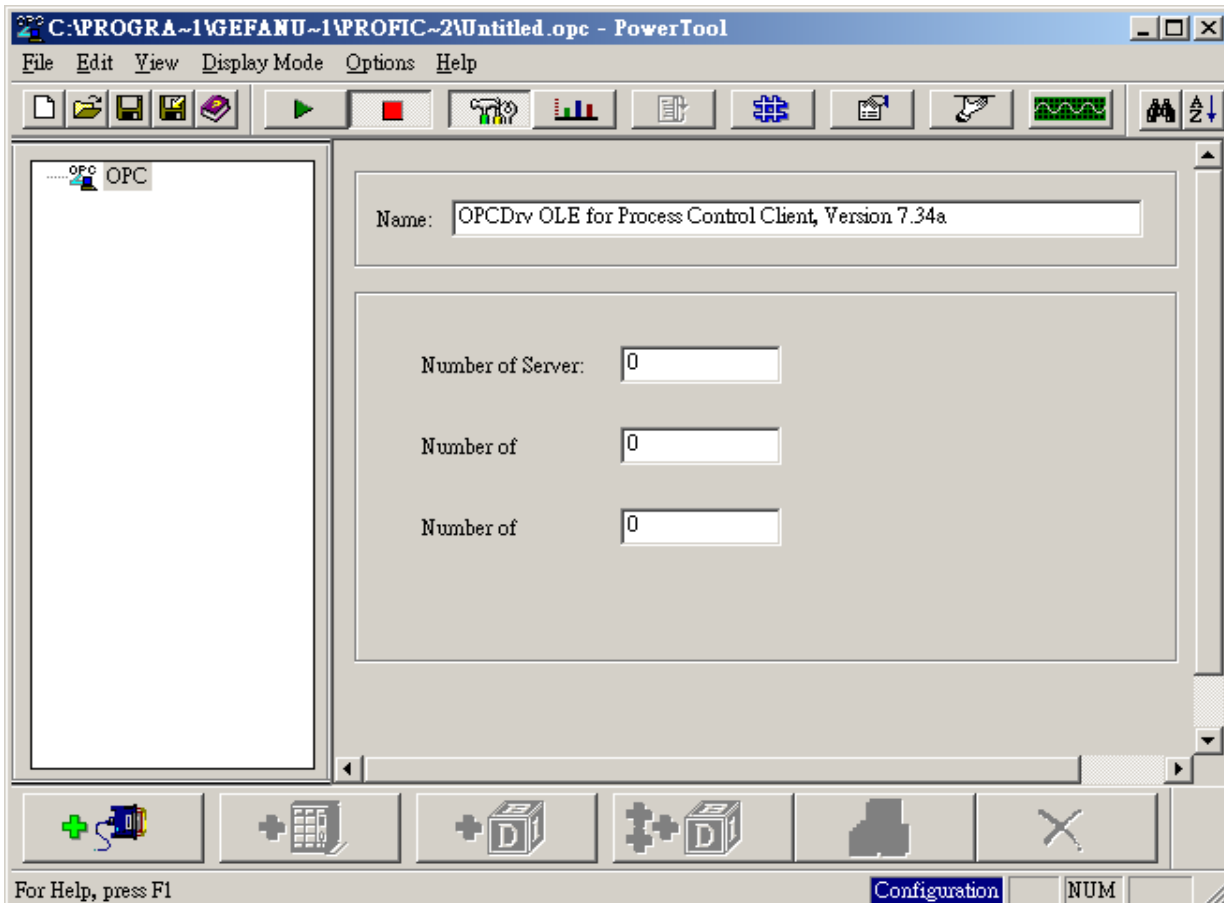
Click [ Configure... ] to set up the Dataltem connected to OPC Client.



Select the OPC Server or Remote OPC Server you need; than click “Connect...” . Later, the Power Tool window will be opened.

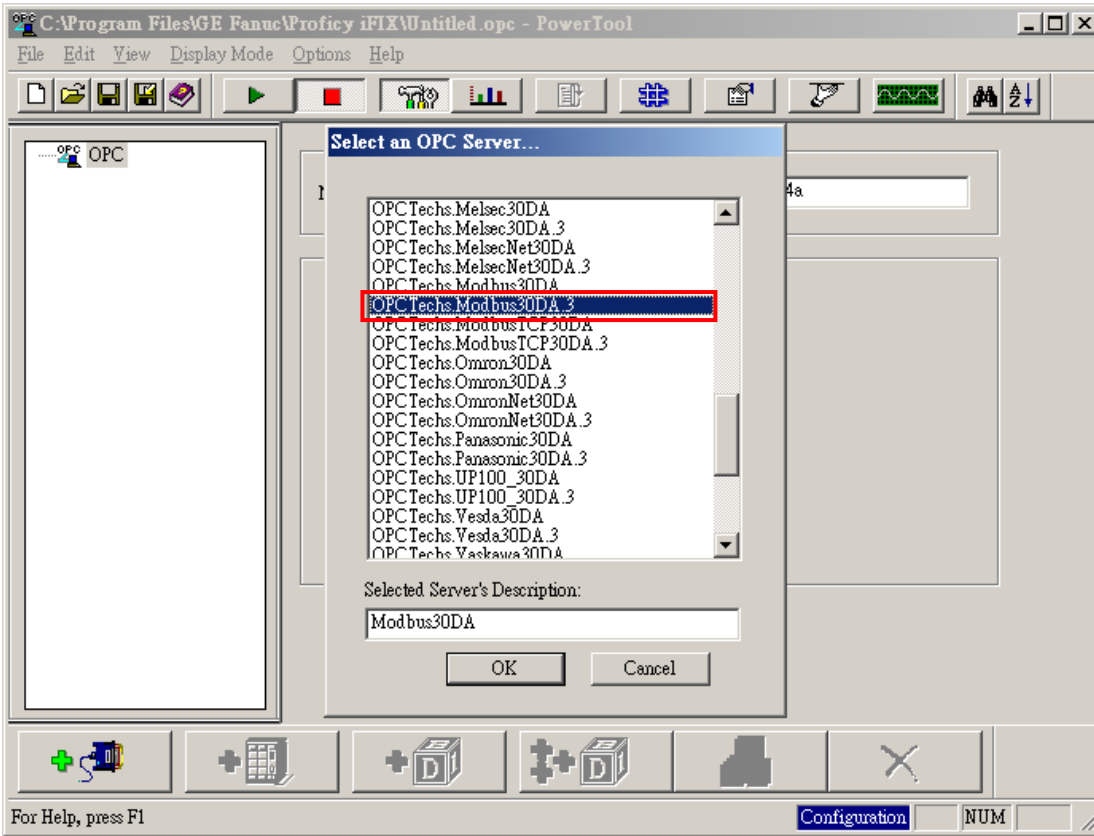


Please select  to add the OPC Server.

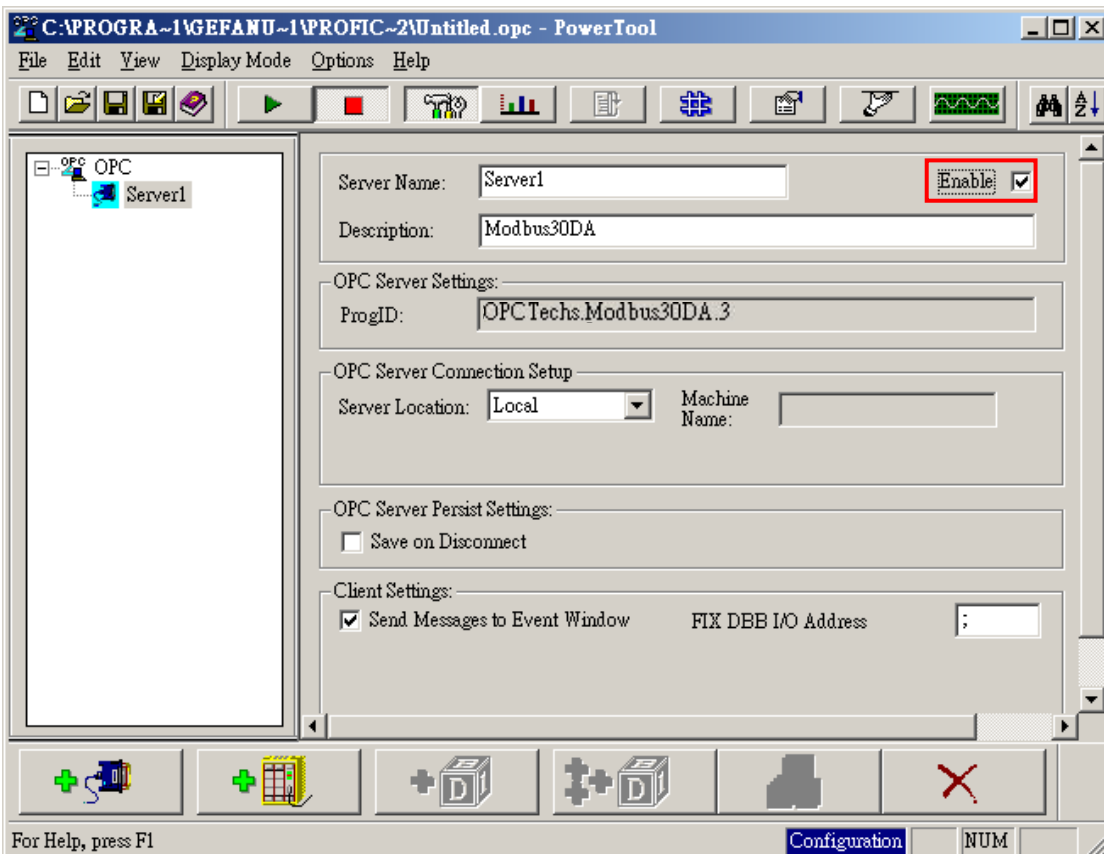





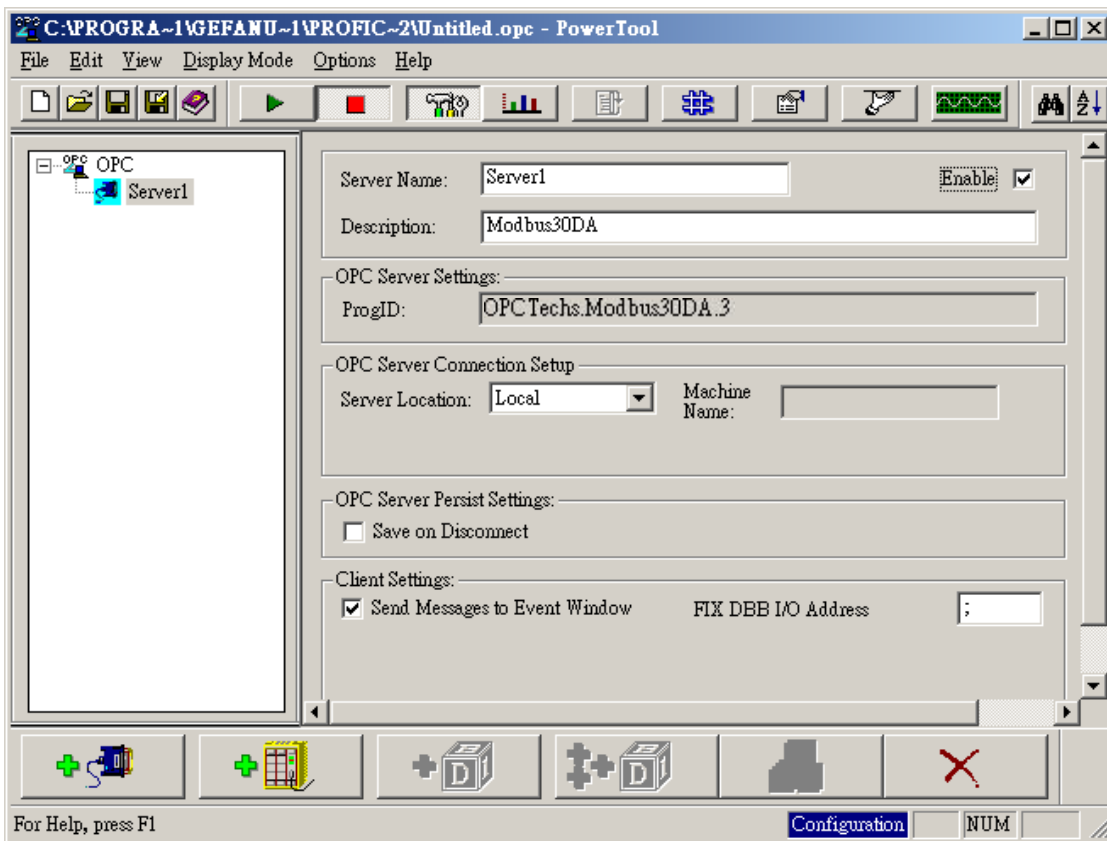
Select the OPC Server you need, and then click “OK”.



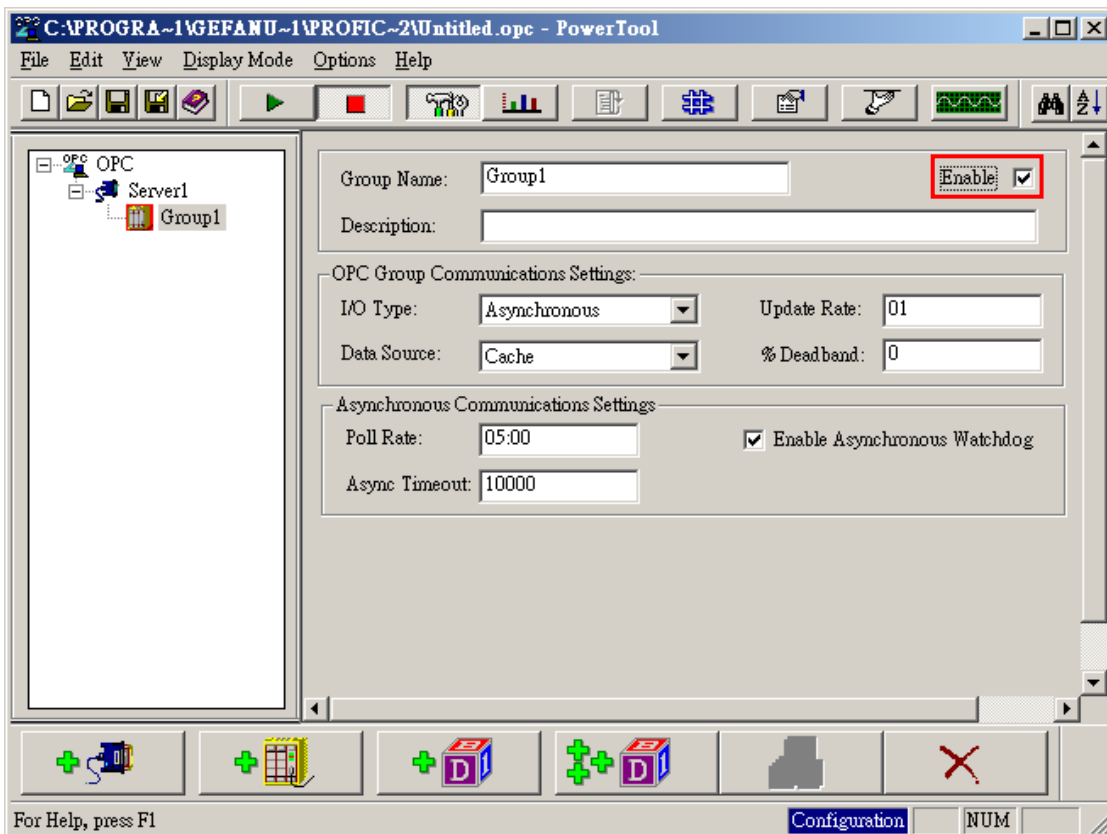
Select [ Enable ] to connect to OPC Client.




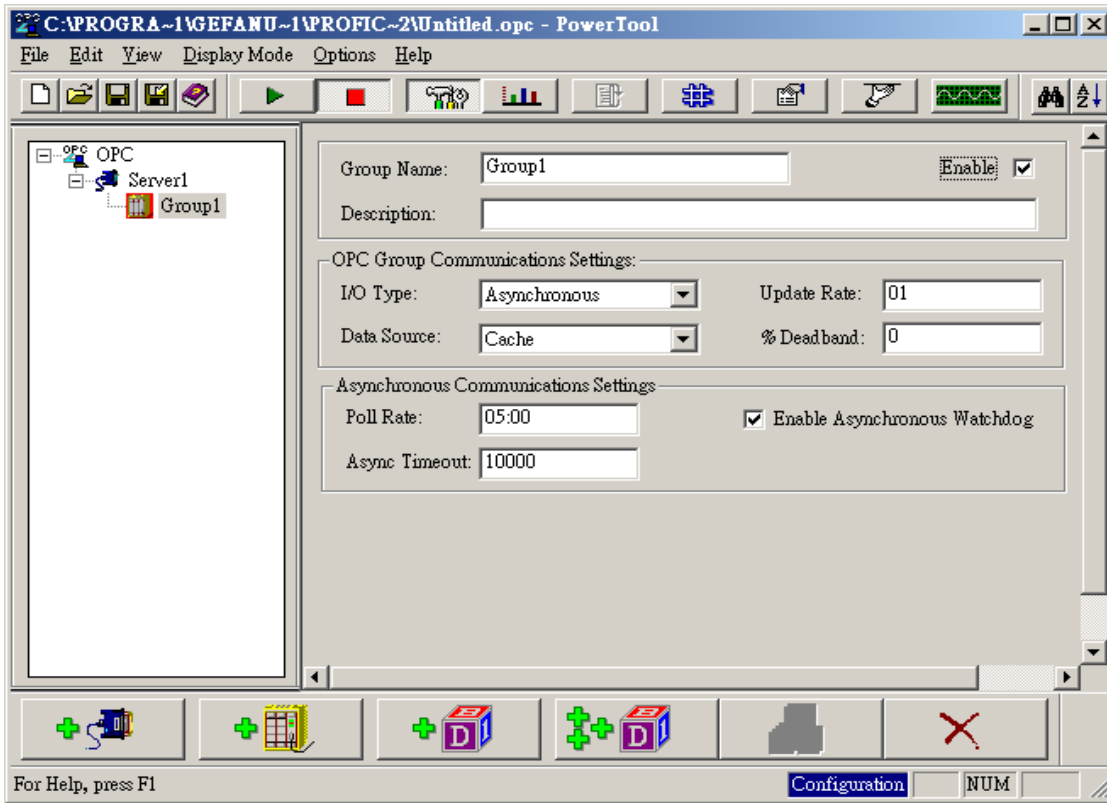
Click  to create a Group.



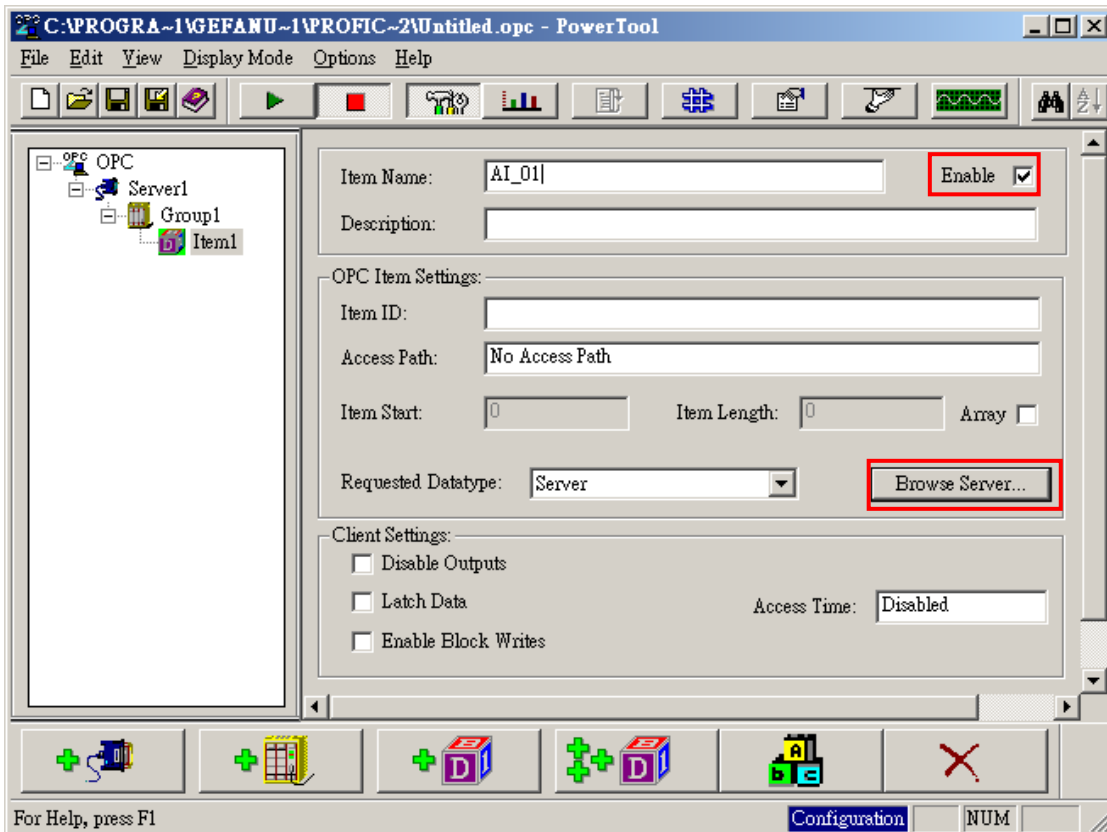
Select [ Enable ] to connect to the group.



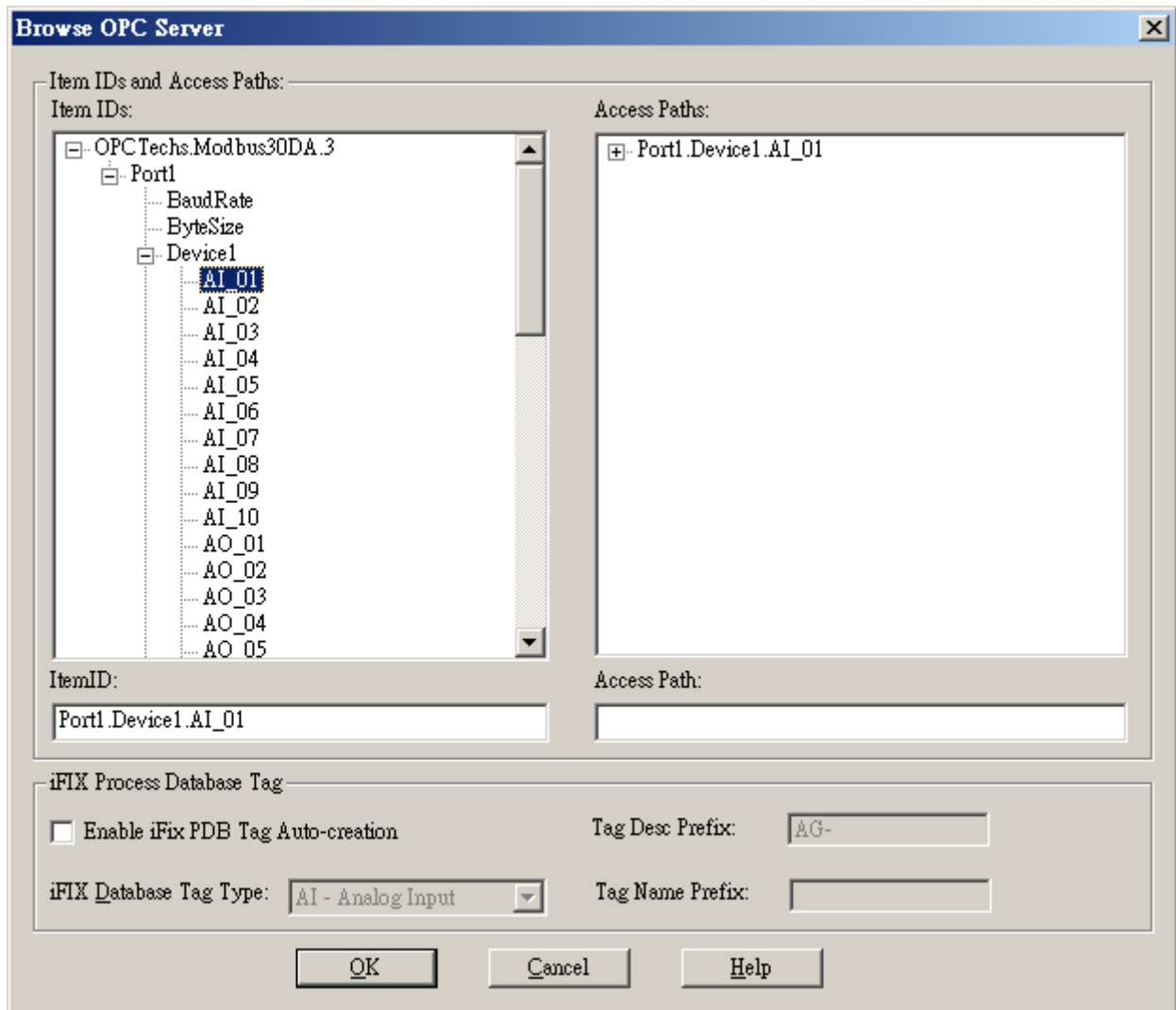
Click  to add a DataItem.



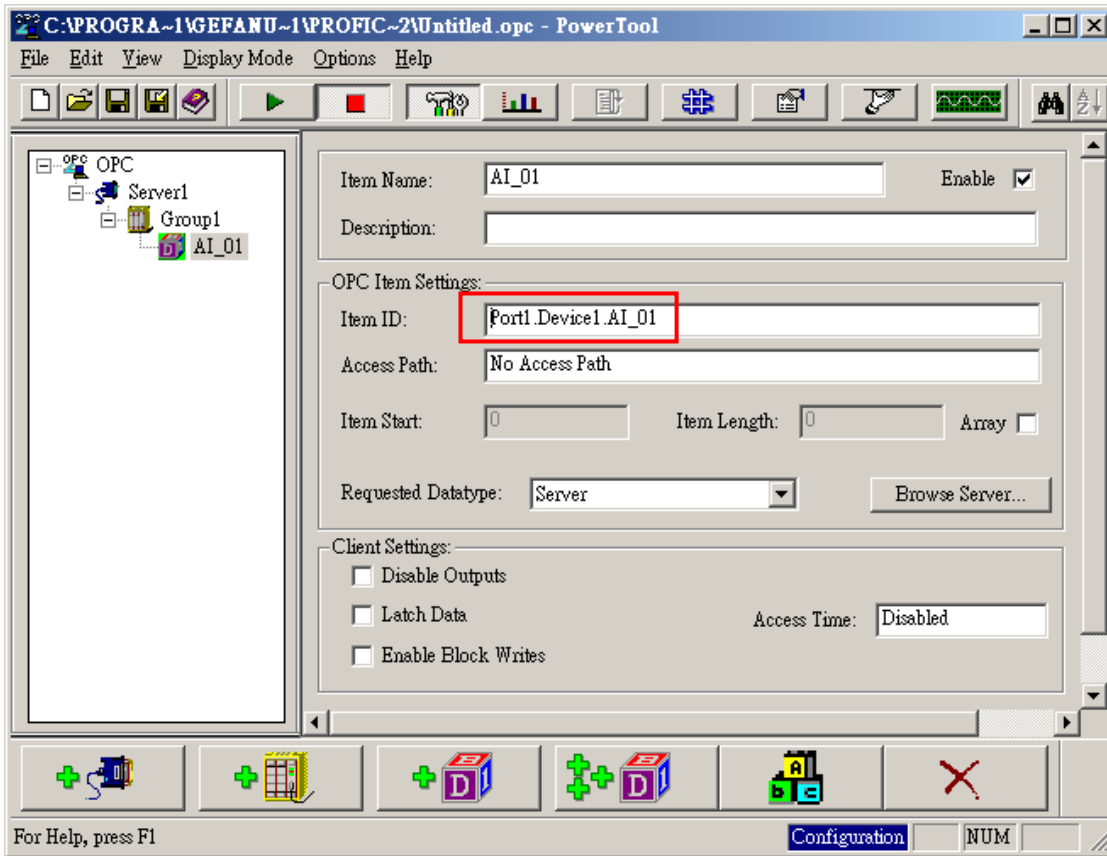
Define the name of the Item and select "Enable". Click [ Browse Server ] to display all the tags.



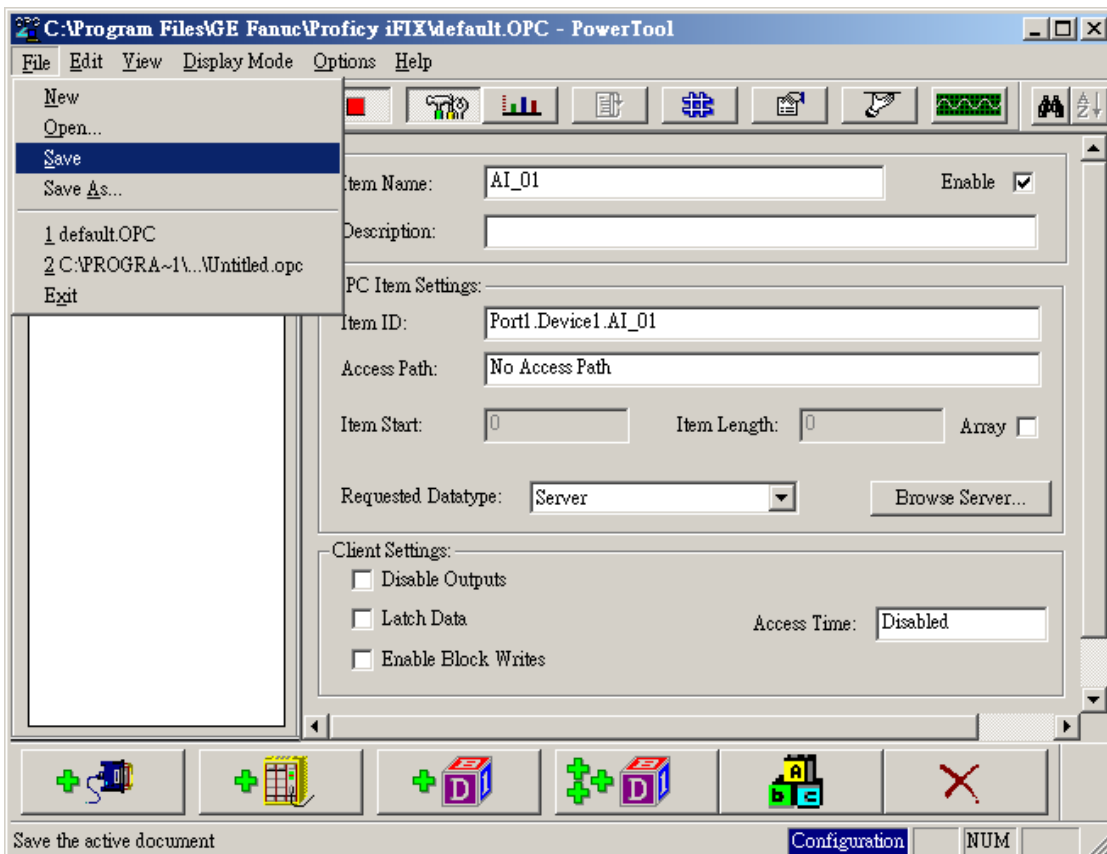
Select the Item to be connected with; then click [ OK ].



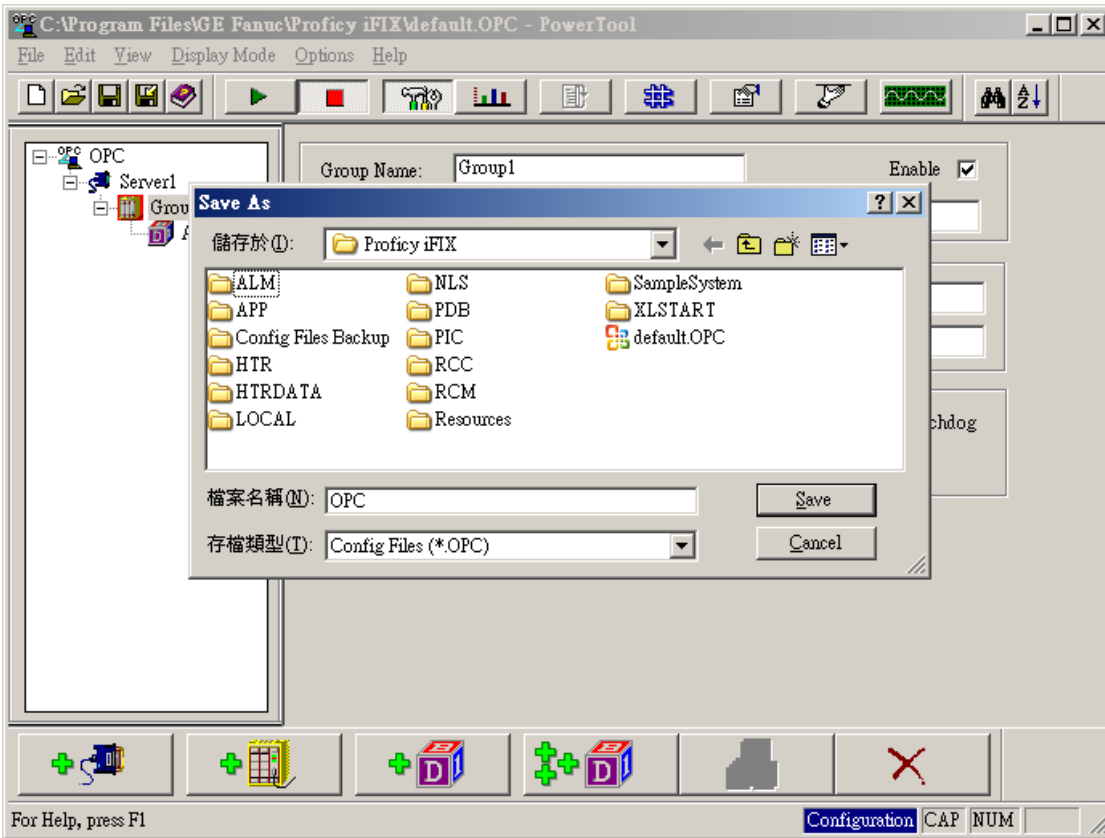
Item ID will be defined automatically.



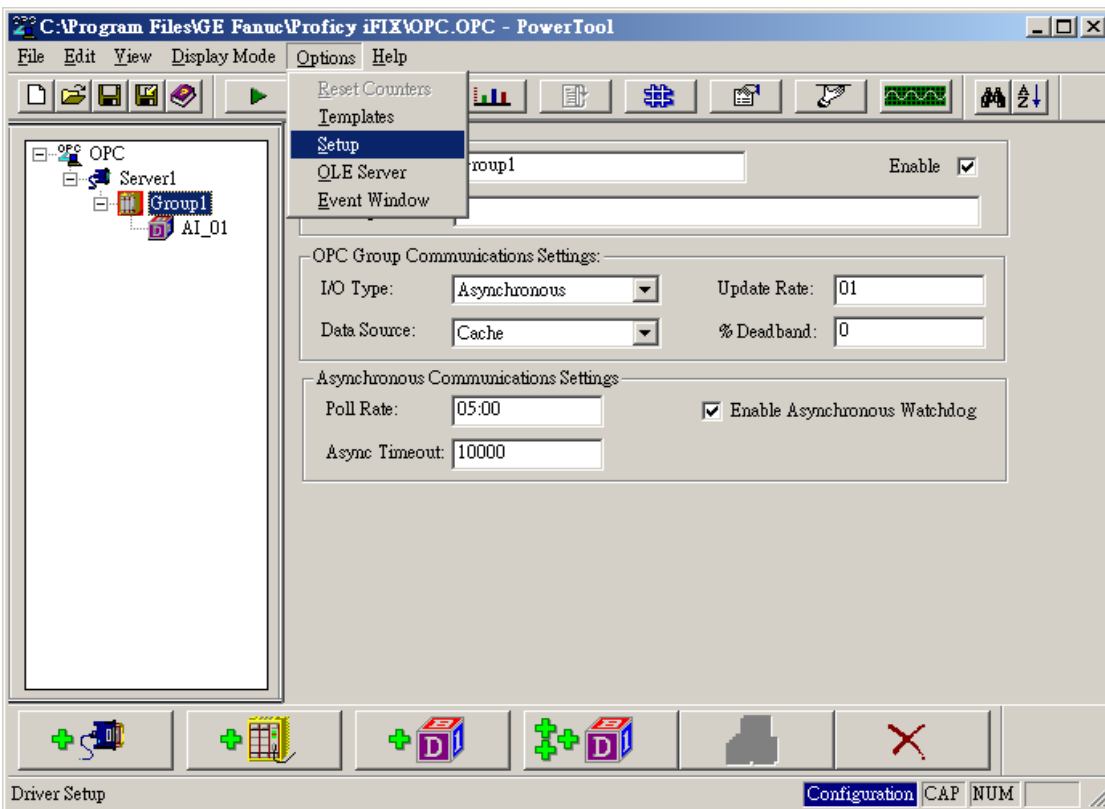
Save the settings.



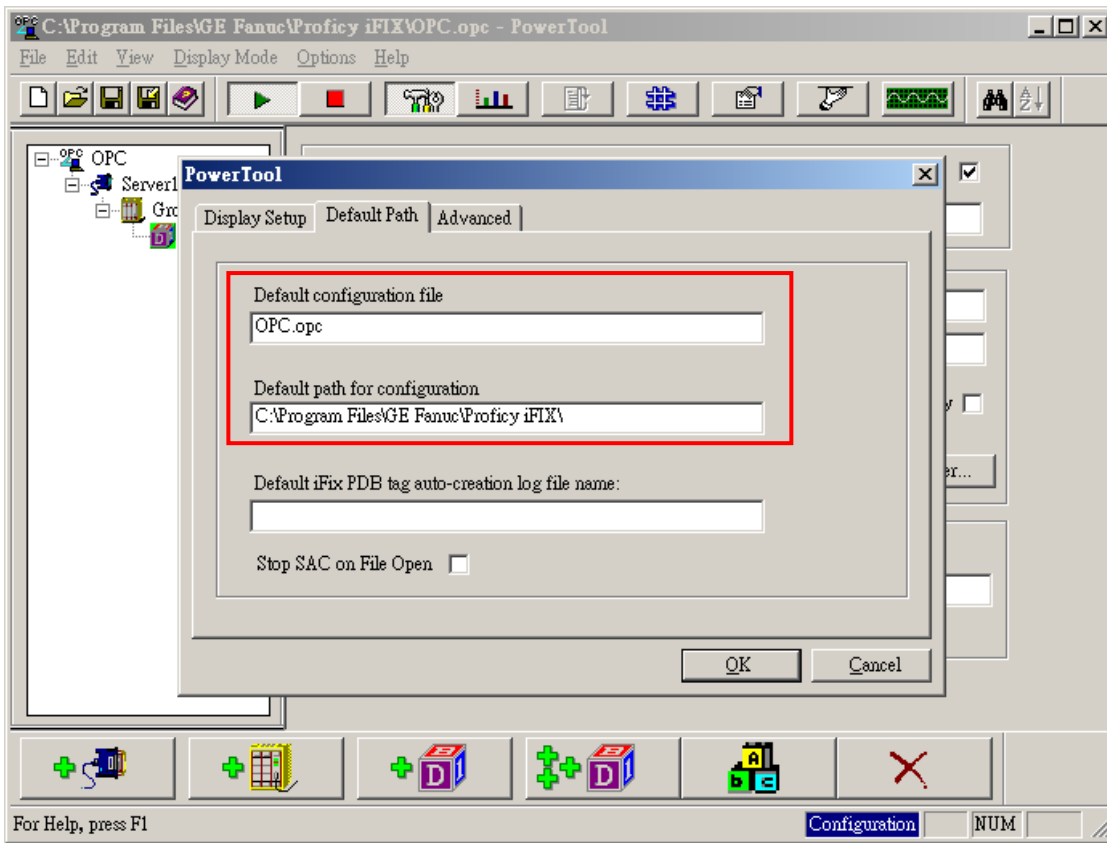
Select the location where the setting will be stored.



Click 「Options」 → 「Setup」

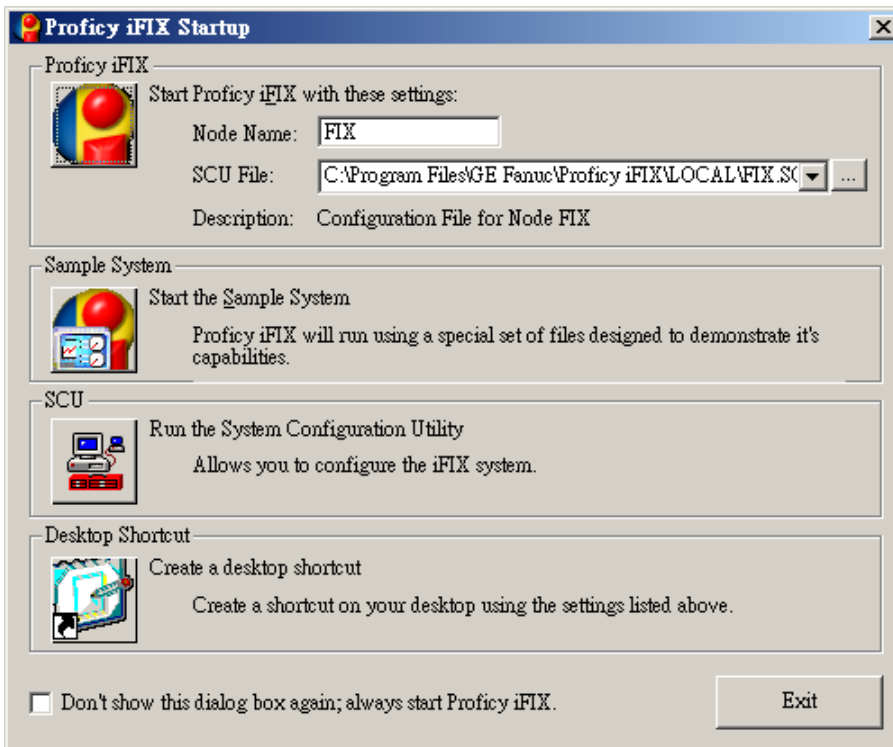


### Define the name and location for Config File

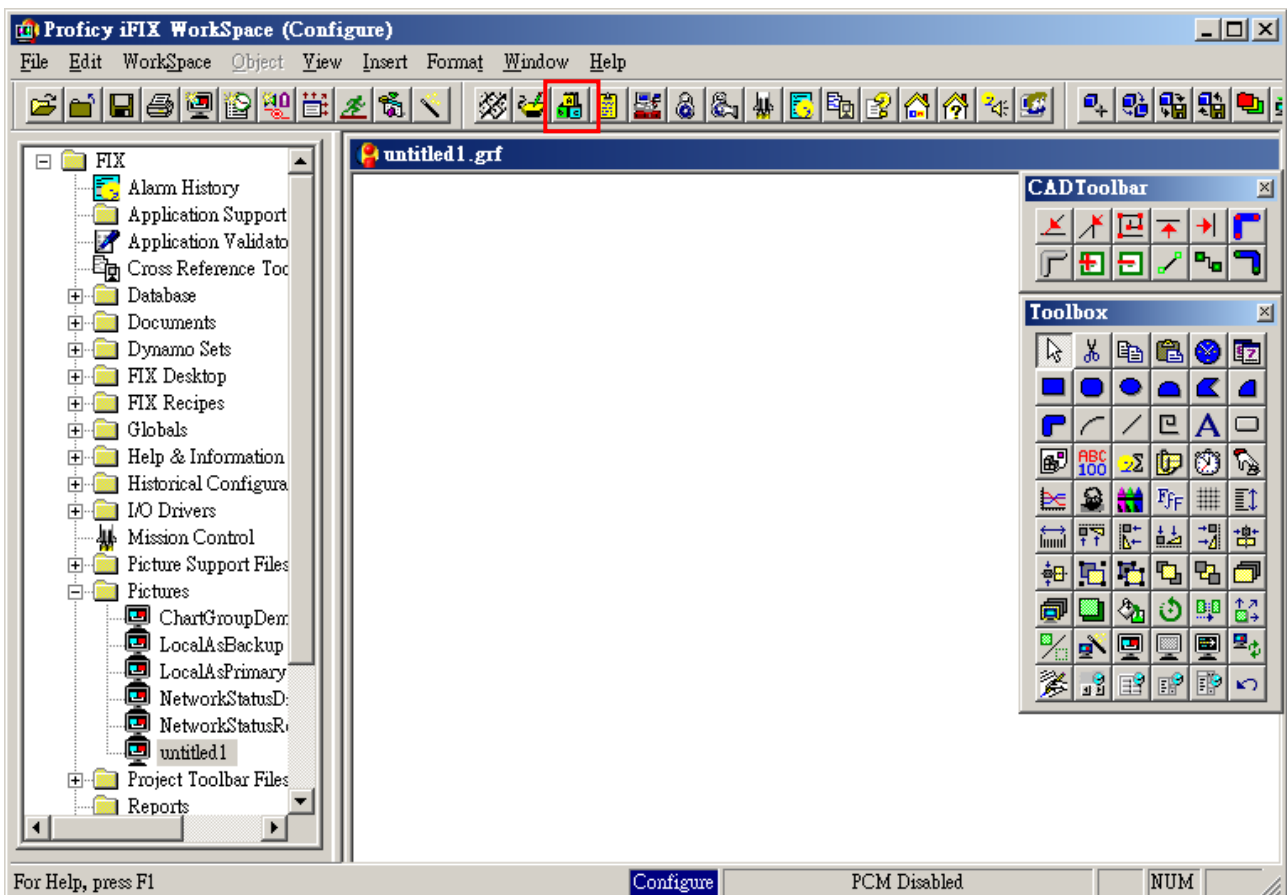


Close Power Tool and SCADA Configuration.


### Start iFix 4.0

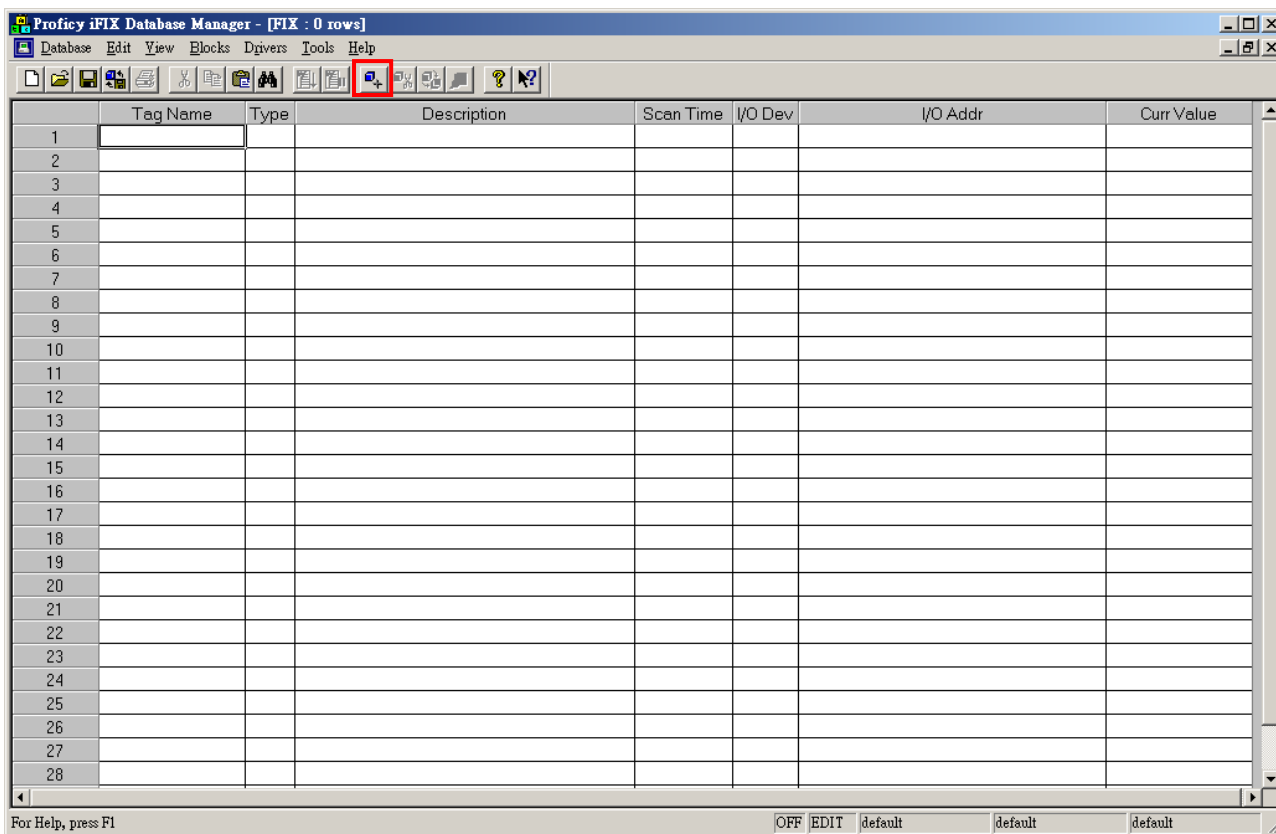


Click  to create tags and enable the connection with OPC Client.

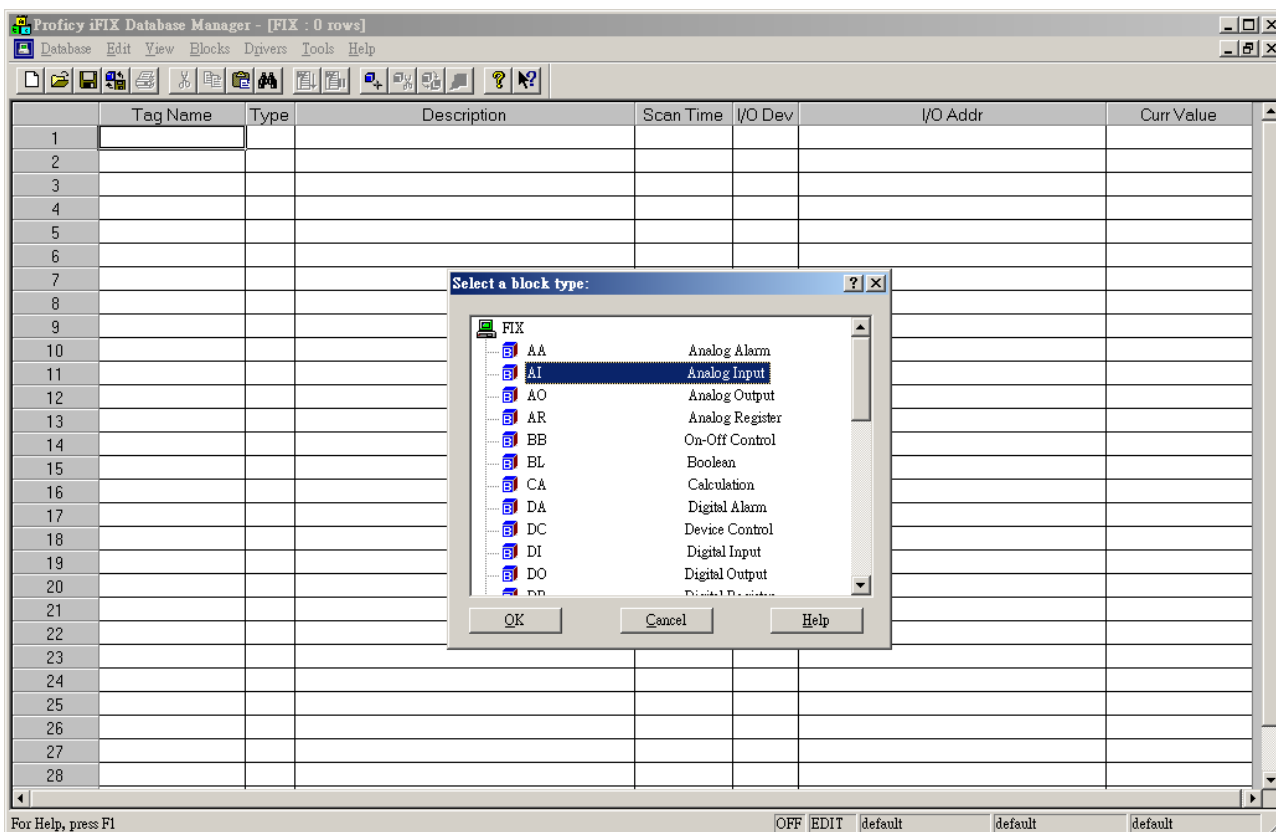




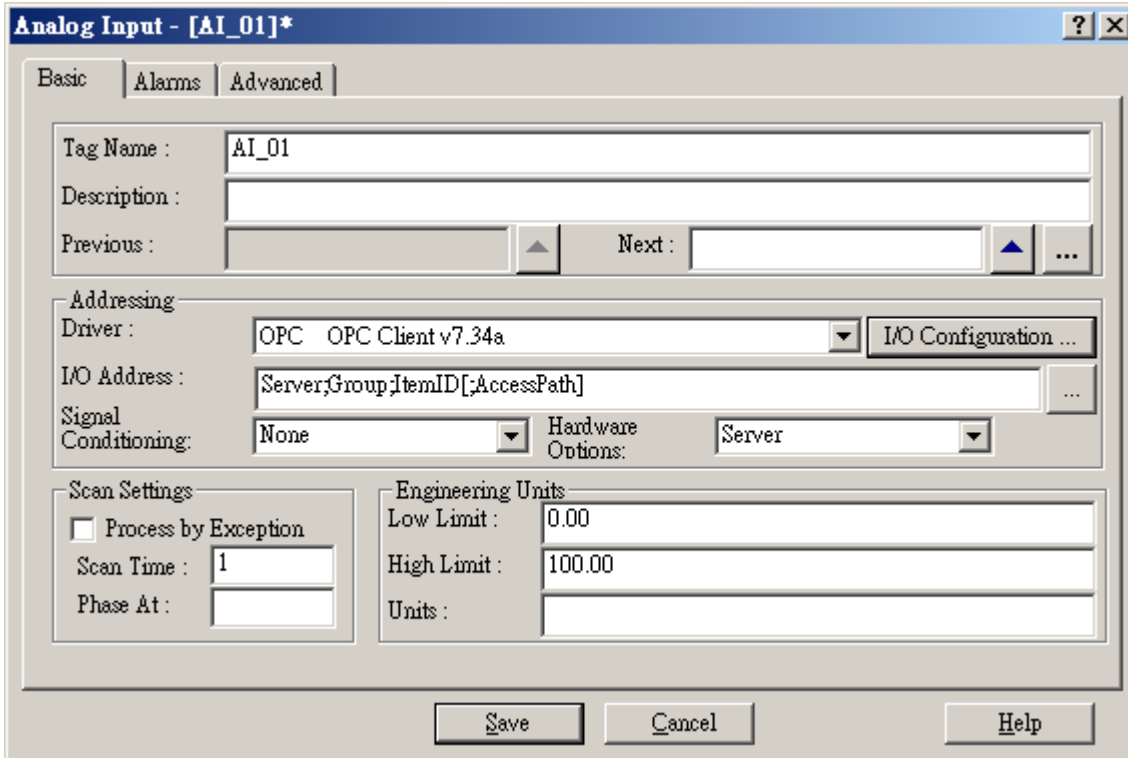
Click  to create a new Tag.



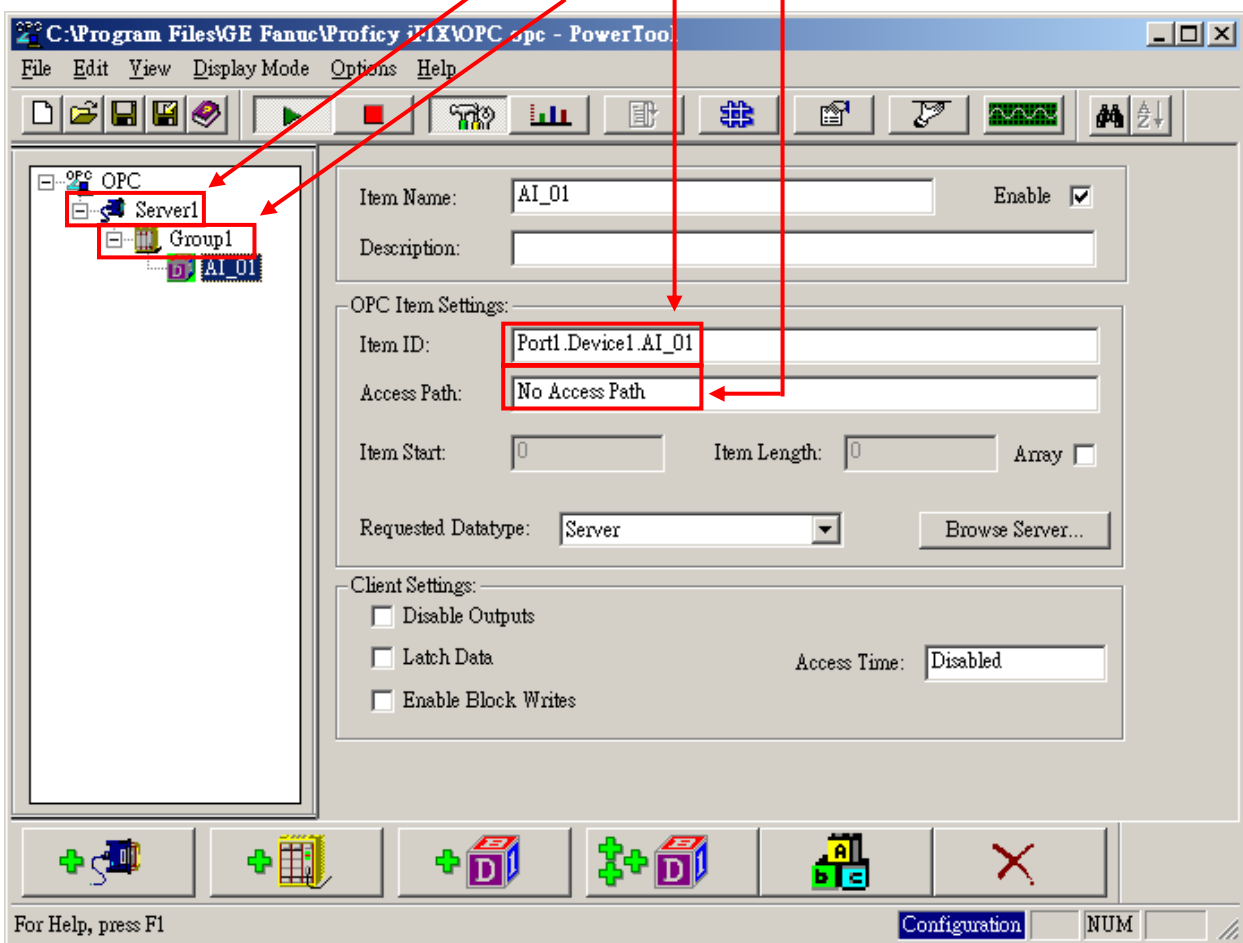
Select the data type.



Define the Tag Name; select “ OPC Client” for Driver and type in its I/O Address. ( **Note1**)

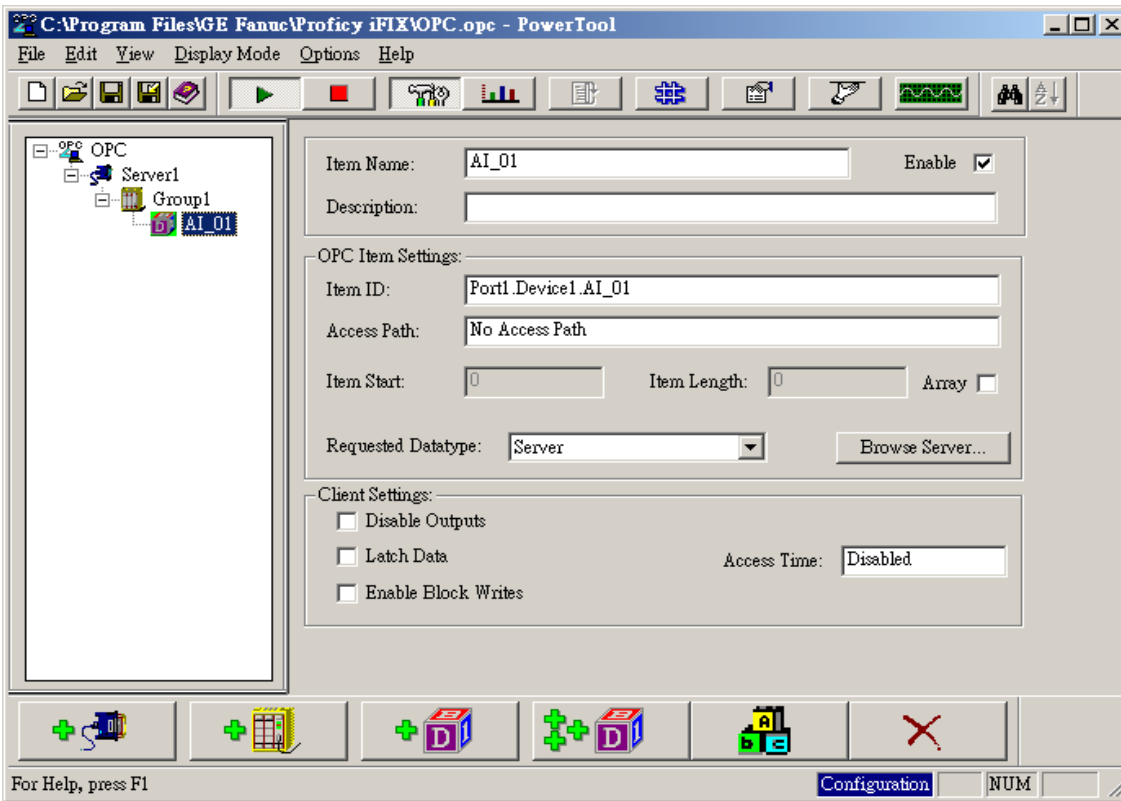


**Note 1:** I/O Address format is **Server;Group;ItemID;AccessPath**

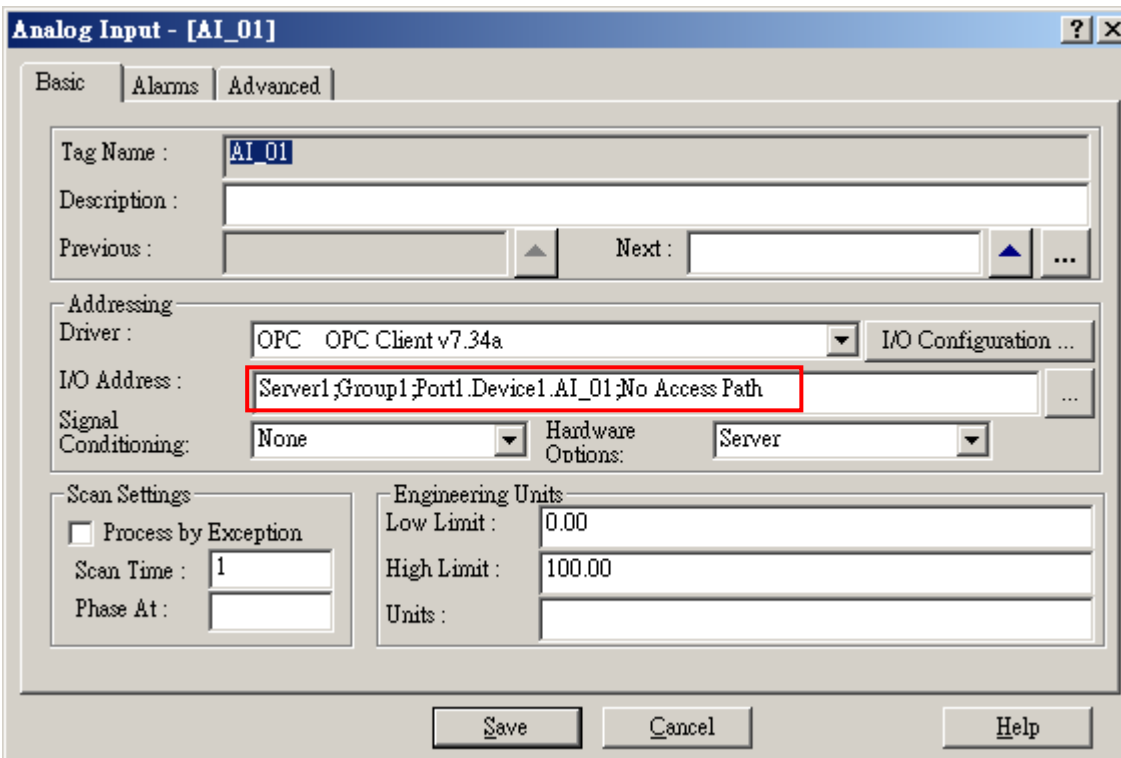


E.g. the I/O Address of AI\_01 should be as follows:

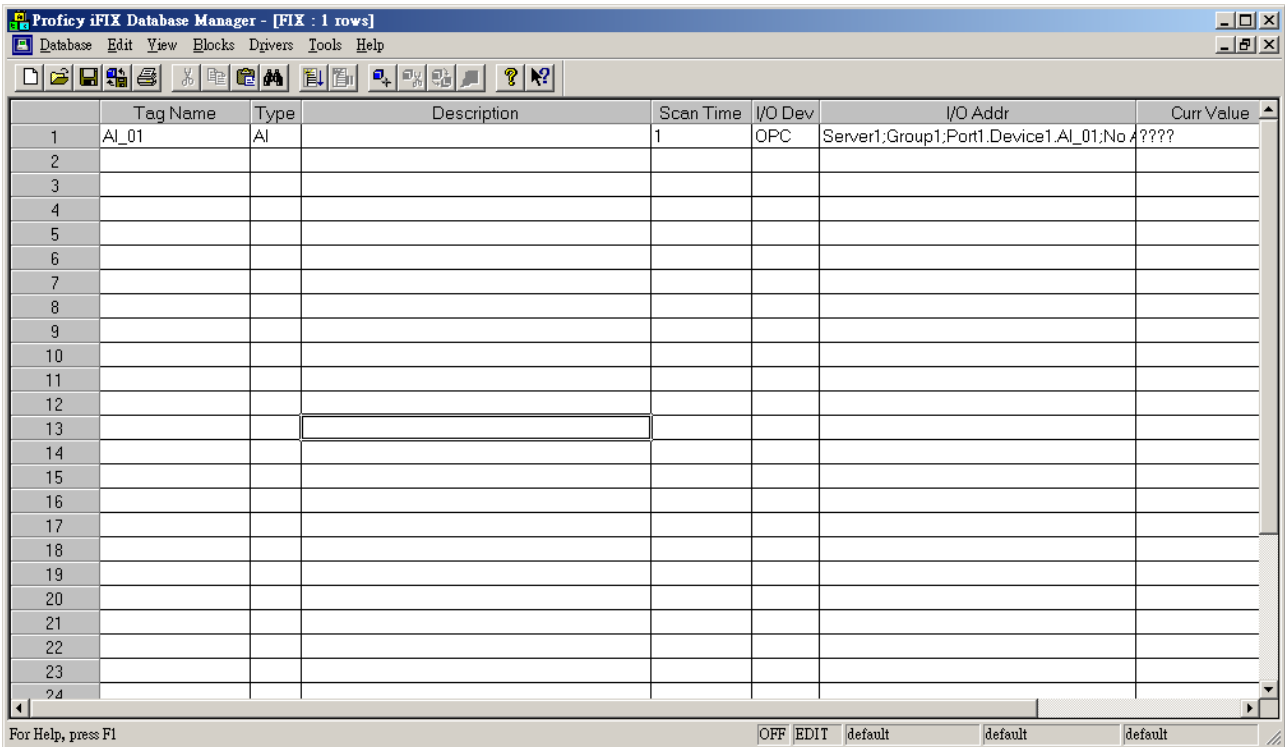
**Server1;Group1;Port1.Device1.AI\_01;No Access Path**



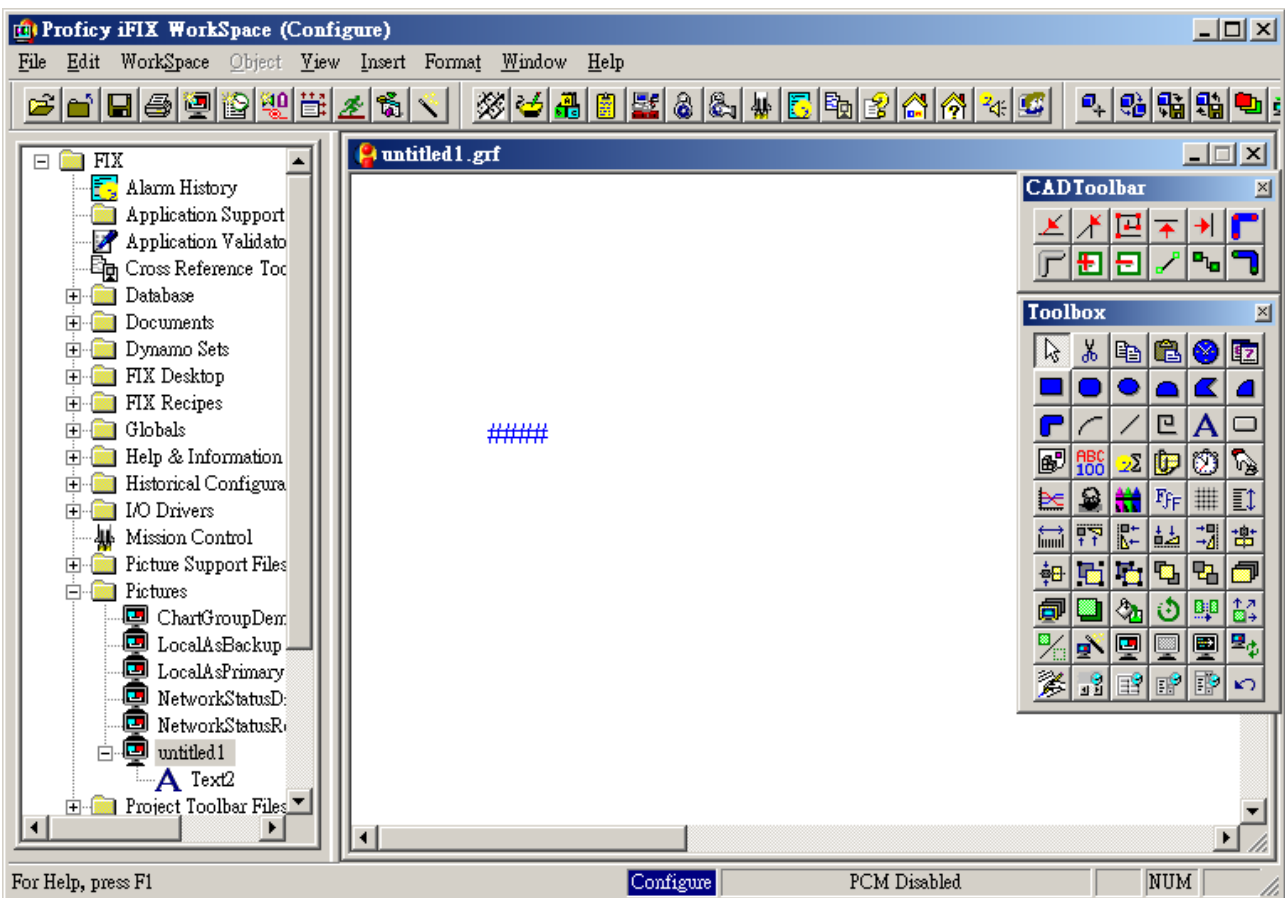
Click [ Save ].



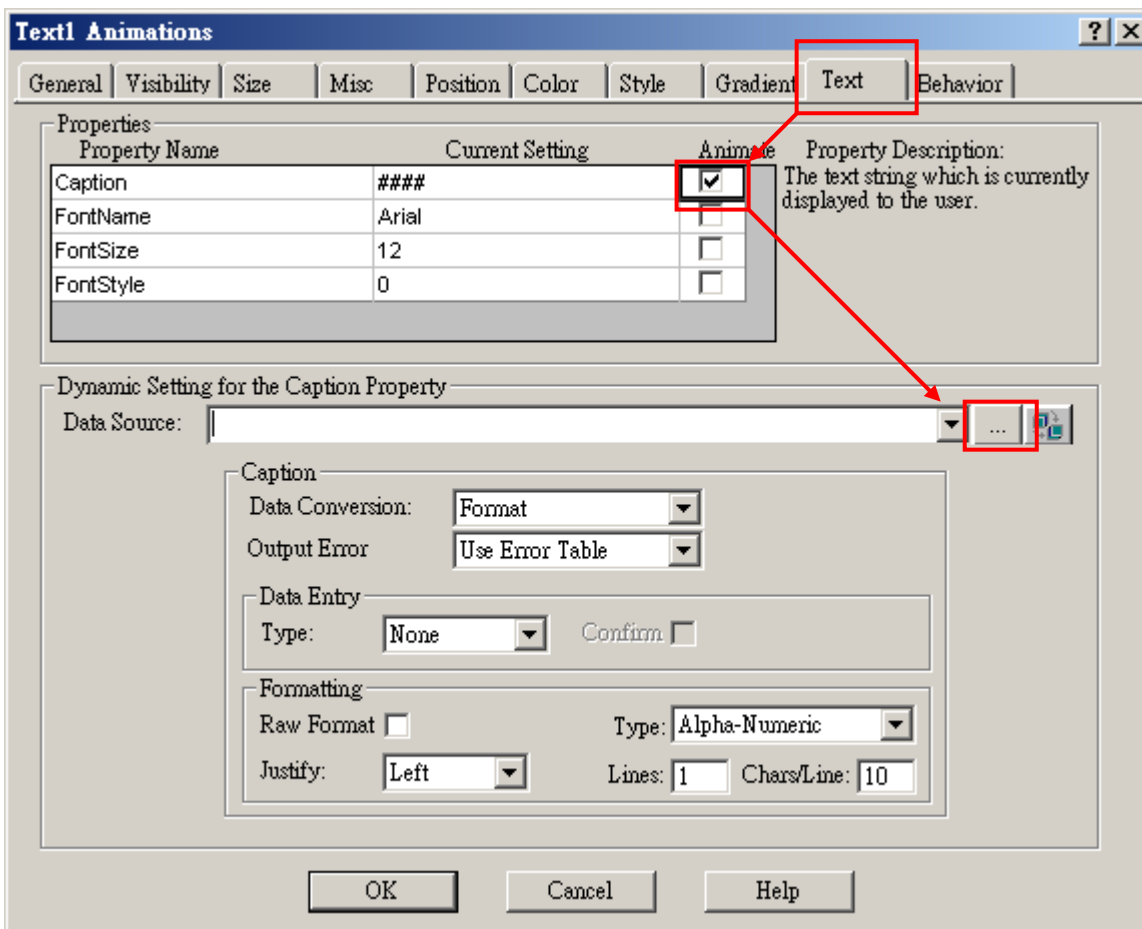
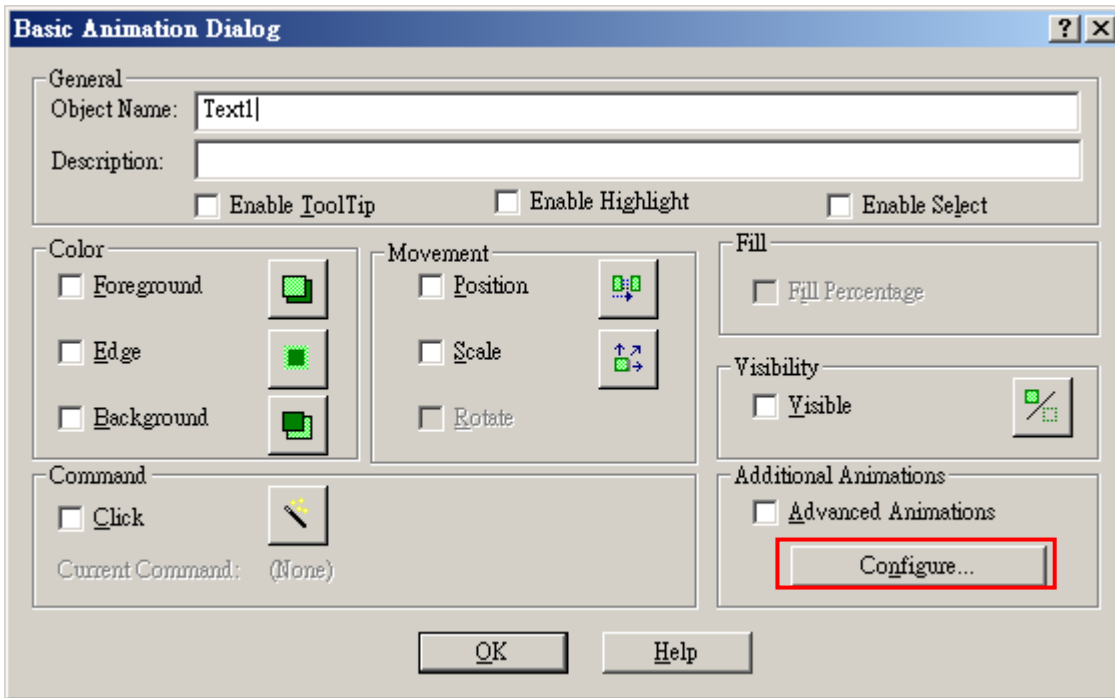
Click [ Database ] → [ Save ]; then close Database Manager.



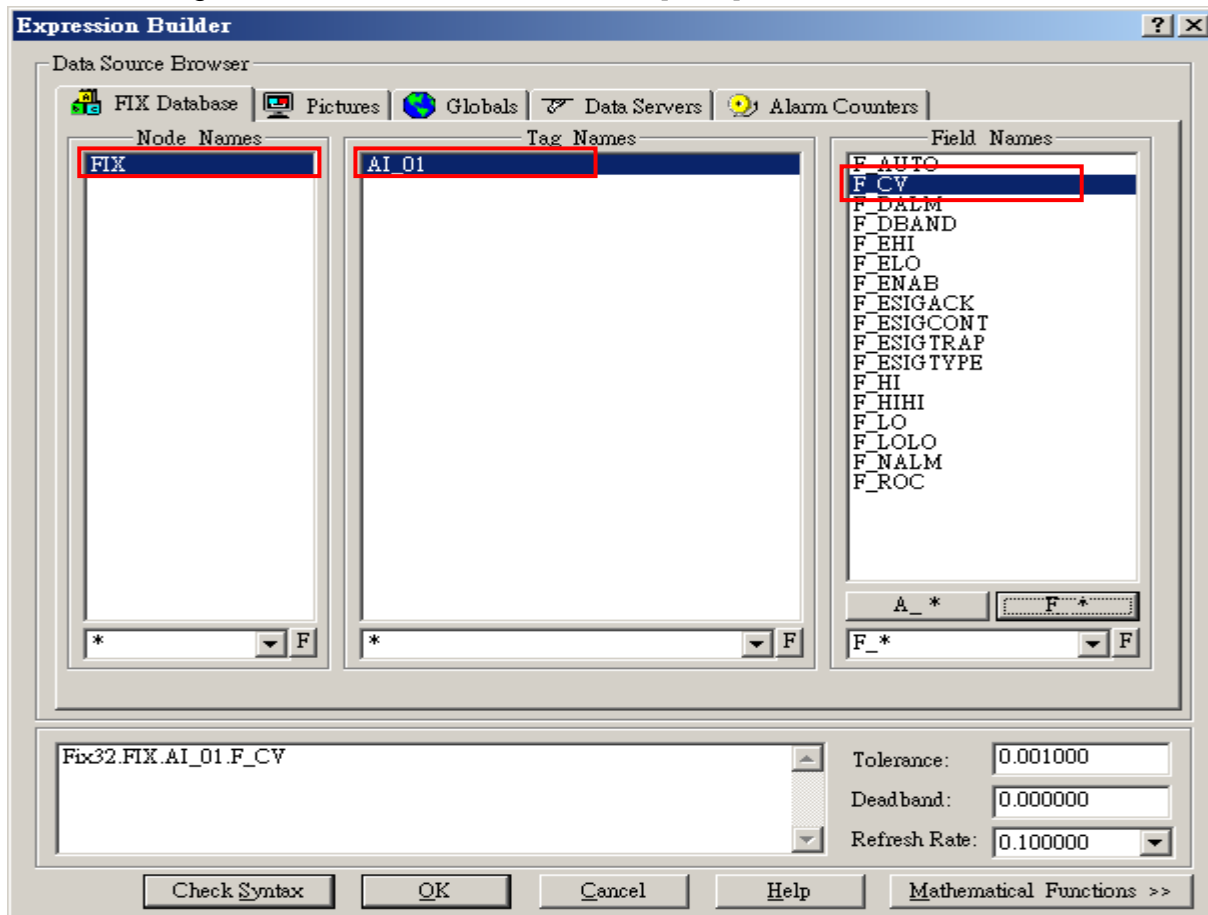
Draw tags and make connections.



Set up the property of Text1.



Select the Tag to be connected and then click [ OK ].



Normal connecting status

