



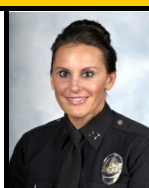
# COMPSTAT

## Pacific Area Profile

11/02/14 - 11/29/14



**AREA**  
**COMMANDING OFFICER:** Brian P. Johnson  
**Rank:** CAPT-III  
**Date of Rank:** September 8, 2013  
**Date Assigned Area:** September 8, 2013  
**LAPD Appointment Date:** March 27, 1989



**PATROL DIVISION**  
**COMMANDING OFFICER:** Nicole L. Alberca  
**Rank:** CAPT-I  
**Date of Rank:** June 15, 2014  
**Date Assigned Area:** June 15, 2014  
**LAPD Appointment Date:** December 23, 1996

### CRIME STATISTICS for week ending 11/29/14

<b>VIOLENT CRIMES</b>	11/02/14 TO 11/29/14	10/05/14 TO 11/01/14	% Change	10/05/14 TO 11/01/14	09/07/14 TO 10/04/14	% Change	YTD 2014	YTD 2013	% Change	YTD 2014	YTD 2012	% Change
HOMICIDE	0	0	N.C.*	0	0	N.C.*	0	6	-100.0%	0	5	-100.0%
RAPE (121,122)	1	1	0.0%	1	1	0.0%	39	47	-17.0%	39	36	8.3%
RAPE (815,820,821)	0	2	-100.0%	2	0	N.C.*	11	14	-21.4%	11	17	-35.3%
<b>TOTAL RAPE</b>	<b>1</b>	<b>3</b>	<b>-66.7%</b>	<b>3</b>	<b>1</b>	<b>200.0%</b>	<b>50</b>	<b>61</b>	<b>-18.0%</b>	<b>50</b>	<b>53</b>	<b>-5.7%</b>
ROBBERY	19	16	18.8%	16	22	-27.3%	230	262	-12.2%	230	272	-15.4%
AGGRAVATED ASSAULTS	12	18	-33.3%	18	41	-56.1%	256	259	-1.2%	256	193	32.6%
<b>TOTAL VIOLENT</b>	<b>32</b>	<b>37</b>	<b>-13.5%</b>	<b>37</b>	<b>64</b>	<b>-42.2%</b>	<b>536</b>	<b>588</b>	<b>-8.8%</b>	<b>536</b>	<b>523</b>	<b>2.5%</b>

<b>PROPERTY CRIMES</b>	11/02/14 TO 11/29/14	10/05/14 TO 11/01/14	% Change	10/05/14 TO 11/01/14	09/07/14 TO 10/04/14	% Change	YTD 2014	YTD 2013	% Change	YTD 2014	YTD 2012	% Change
BURGLARY	84	84	0.0%	84	102	-17.6%	987	1008	-2.1%	987	1114	-11.4%
MOTOR VEHICLE THEFT	52	66	-21.2%	66	63	4.8%	706	644	9.6%	706	757	-6.7%
BTFV	99	127	-22.0%	127	118	7.6%	1240	1256	-1.3%	1240	1365	-9.2%
PERSONAL/OTHER THEFT	127	148	-14.2%	148	164	-9.8%	2003	1941	3.2%	2003	1748	14.6%
<b>TOTAL PROPERTY</b>	<b>362</b>	<b>425</b>	<b>-14.8%</b>	<b>425</b>	<b>447</b>	<b>-4.9%</b>	<b>4936</b>	<b>4849</b>	<b>1.8%</b>	<b>4936</b>	<b>4984</b>	<b>-1.0%</b>
<b>TOTAL PART I</b>	<b>394</b>	<b>462</b>	<b>-14.7%</b>	<b>462</b>	<b>511</b>	<b>-9.6%</b>	<b>5472</b>	<b>5437</b>	<b>0.6%</b>	<b>5472</b>	<b>5507</b>	<b>-0.6%</b>

Child/Spousal Abuse (Part I & II)*	15	23	-34.8%	23	12	91.7%	187	219	-14.6%	187	176	6.3%
SHOTS FIRED	1	0	N.C.*	0	5	-100.0%	29	33	-12.1%	29	29	0.0%
SHOOTING VICTIMS	0	0	N.C.*	0	4	-100.0%	12	15	-20.0%	12	19	-36.8%

### ARREST STATISTICS for week ending 11/29/14

<b>ARRESTS</b>	11/02/14 TO 11/29/14	10/05/14 TO 11/01/14	% Change	10/05/14 TO 11/01/14	09/07/14 TO 10/04/14	% Change	YTD 2014	YTD 2013	% Change	YTD 2014	YTD 2012	% Change
HOMICIDE	1	0	N.C.*	0	0	N.C.*	5	6	-16.7%	5	7	-28.6%
RAPE	0	0	N.C.*	0	0	N.C.*	7	9	-22.2%	7	8	-12.5%
ROBBERY	11	3	266.7%	3	12	-75.0%	84	69	21.7%	84	72	16.7%
AGGRAVATED ASSAULT**	23	30	-23.3%	30	20	50.0%	271	272	-0.4%	271	260	4.2%
BURGLARY	29	8	262.5%	8	15	-46.7%	134	127	5.5%	134	122	9.8%
LARCENY	14	21	-33.3%	21	21	0.0%	228	272	-16.2%	228	364	-37.4%
MOTOR VEHICLE THEFT	5	9	-44.4%	9	6	50.0%	76	44	72.7%	76	72	5.6%
<b>TOTAL VIOLENT</b>	<b>35</b>	<b>33</b>	<b>6.1%</b>	<b>33</b>	<b>32</b>	<b>3.1%</b>	<b>367</b>	<b>356</b>	<b>3.1%</b>	<b>367</b>	<b>347</b>	<b>5.8%</b>
<b>TOTAL PART I</b>	<b>83</b>	<b>71</b>	<b>16.9%</b>	<b>71</b>	<b>74</b>	<b>-4.1%</b>	<b>805</b>	<b>799</b>	<b>0.8%</b>	<b>805</b>	<b>905</b>	<b>-11.0%</b>
<b>TOTAL ALL ARRESTS</b>	<b>910</b>	<b>1181</b>	<b>-22.9%</b>	<b>1181</b>	<b>1227</b>	<b>-3.7%</b>	<b>11153</b>	<b>10793</b>	<b>3.3%</b>	<b>11153</b>	<b>11660</b>	<b>-4.3%</b>

\*Part II Child/Spousal Abuse Simple Assaults not included in Part I Aggravated Assaults above to comply with the FBI's Uniform Crime Reporting guidelines.

\*\*Statistics include domestic violence.

N.C. - Not Calculable

Statistics are based on the date the crime or arrest occurred.