

## DAFEN WARD: ELECTORAL DIVISION PROFILE

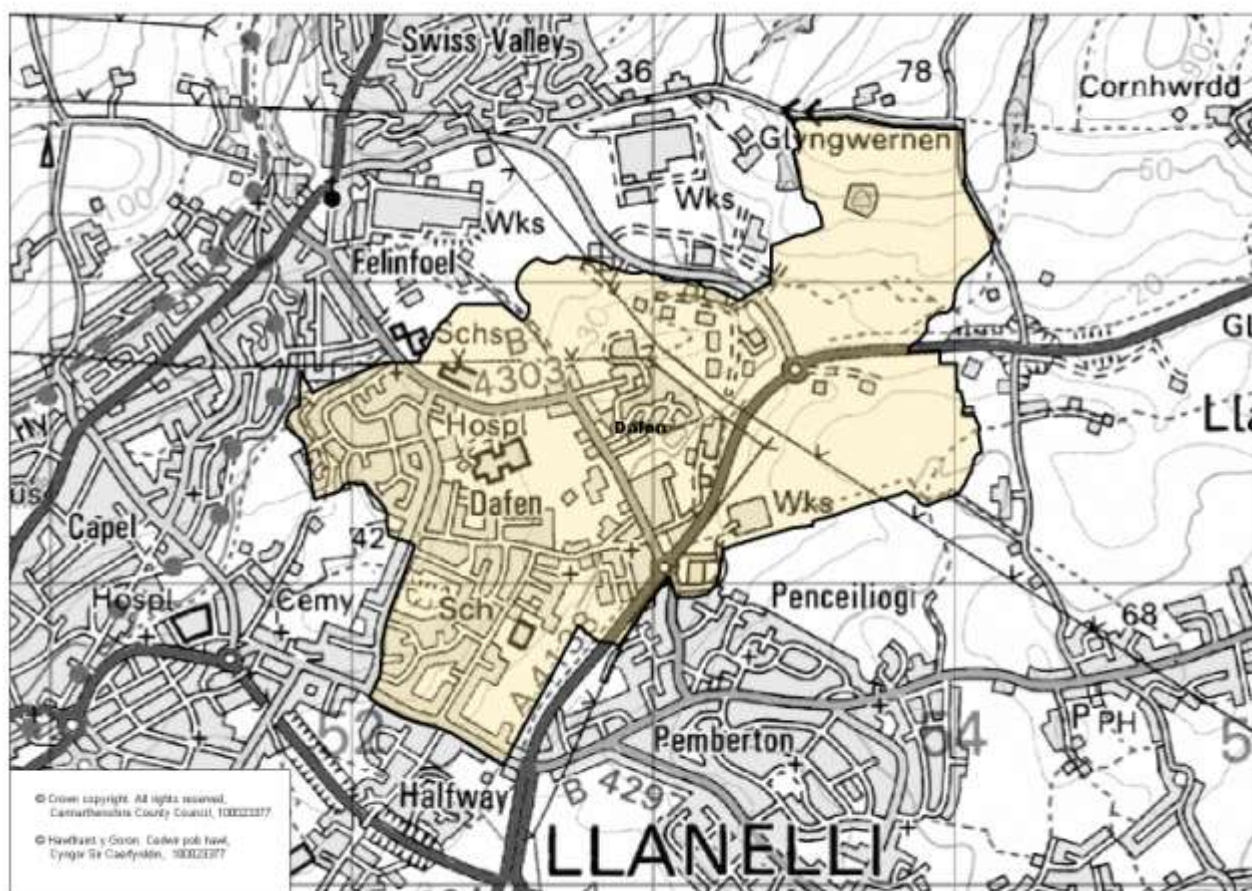
Policy Research and Information Section, Carmarthenshire County Council, May 2014

**Councillors (Electoral Vote 2012):** Tegwen Devichand (Labour & Co-operative). Turnout = 35.41%  
**Electorate (2014):** 2665

**Population:** 3,615 (2012 Mid Year Population Estimates, ONS)

**Welsh Assembly and UK Parliamentary Constituency:** Llanelli

**Council owned Facilities:** Dafen C.P. School, Halfway C.P. School, St. Mary's R.C.P. School, Llanelli, Bryngwyn Comprehensive School, St. John Lloyd R.C. Comprehensive School, Dafen Library, Dafen Park, Dafen Cricket Club, Bridleway at Squires Court.



**Location: Approximately 32.7 km from Carmarthen Town**

- ⇒ Area: 2.41km<sup>2</sup>
- ⇒ Population Density: 1,506 people per km<sup>2</sup>
- ⇒ Population Change: 2001-2012: +171 (+5.0%)
- ⇒ Major Employers: Carmarthenshire County Council (schools and leisure)

## POPULATION STATISTICS

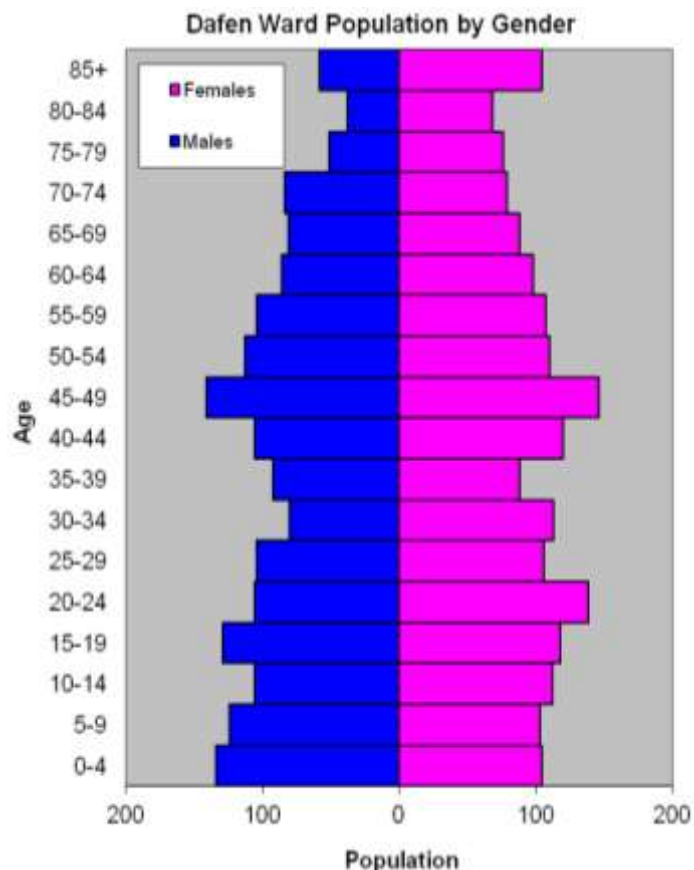
### 2012 Mid Year Population Estimates

Age Structure	Dafen Population	Dafen %	Carmarthenshire %
Aged: 0-4	238	6.6	5.6
5-14	445	12.3	11.0
15-24	491	13.6	11.8
25-44	809	22.4	22.1
45-64	905	25.0	28.0
65-74	332	9.2	11.7
75+	395	10.9	9.8
<b>Total</b>	<b>3,615</b>	<b>100</b>	<b>100</b>

Births & Deaths	Dafen	Carmarthenshire
Birth (2012)	36	1,995
Births Rate	10.0	10.8
Deaths (2012)	31	2,135
Death Rate	8.6	11.6

Source: Vital Statistics 2012, ONS.

Note: birth/death rates expressed per 1000 population.



Source: aggregated lower Super Output Area (LSOA) Small Area Population Estimates, 2012, Office for National Statistics (ONS)

- ⇒ 18<sup>th</sup> highest ward population in Carmarthenshire, and 6<sup>th</sup> highest population density.
- ⇒ Highest proportion of people aged 25-44.
- ⇒ Higher proportion of people with no qualifications and limiting long term illness
- ⇒ Lower proportion of Welsh Speakers than the Carmarthenshire average.

### 2011 Census Data

Population: Key Facts	Dafen	Dafen %	Carmarthenshire
<b>People:</b> born in Wales	3042	84.6	76.0
born outside UK	218	6.0	4.1
in non-white ethnic groups	139	3.9	1.9
with limiting long-term illness	981	27.3	25.4
with no qualifications (aged 16-74)	876	30.7	26.8
with higher level qualifications (aged 16-74)	531	18.6	23.9
able to speak Welsh	931	26.9	43.9

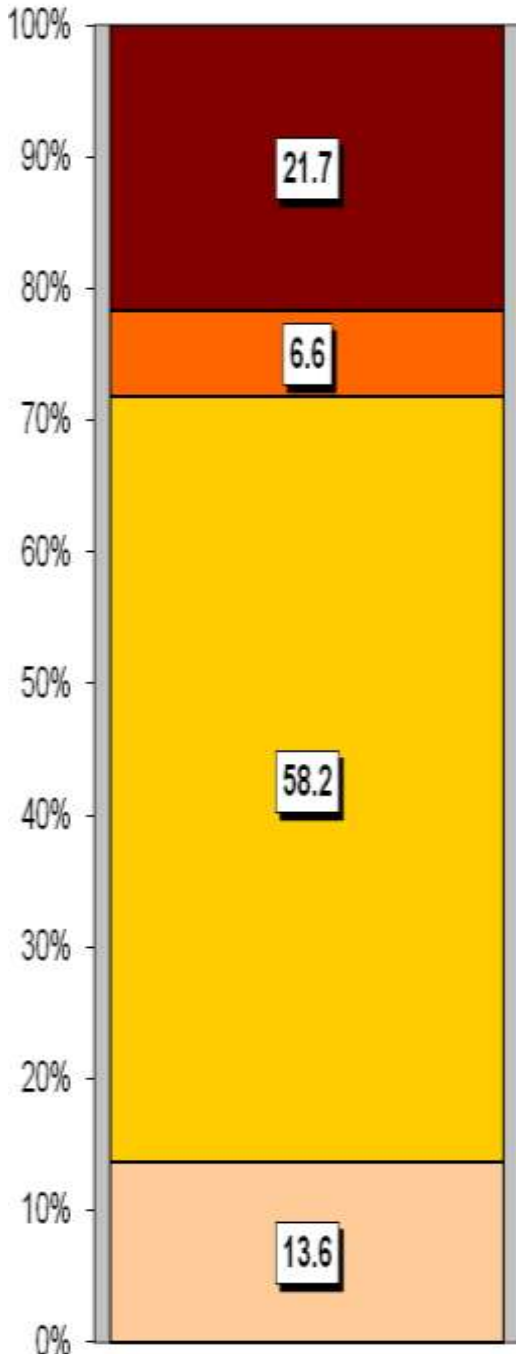
Household Composition	Dafen	Dafen %	Carmarthenshire
<b>Total Households/</b> (Average Household Size)	1493	(2.3)	(2.3)
Household Type: one person: pensioner	224	15.0	14.8
one person: other	235	15.7	15.4
one family: all pensioners	136	9.1	9.8
one family: married couple	498	33.3	34.1
one family: cohabiting couple	120	8.1	8.7
one family: lone parent	202	13.5	11.3
one family: other	78	5.2	5.9

Source: 2011 Census, ONS

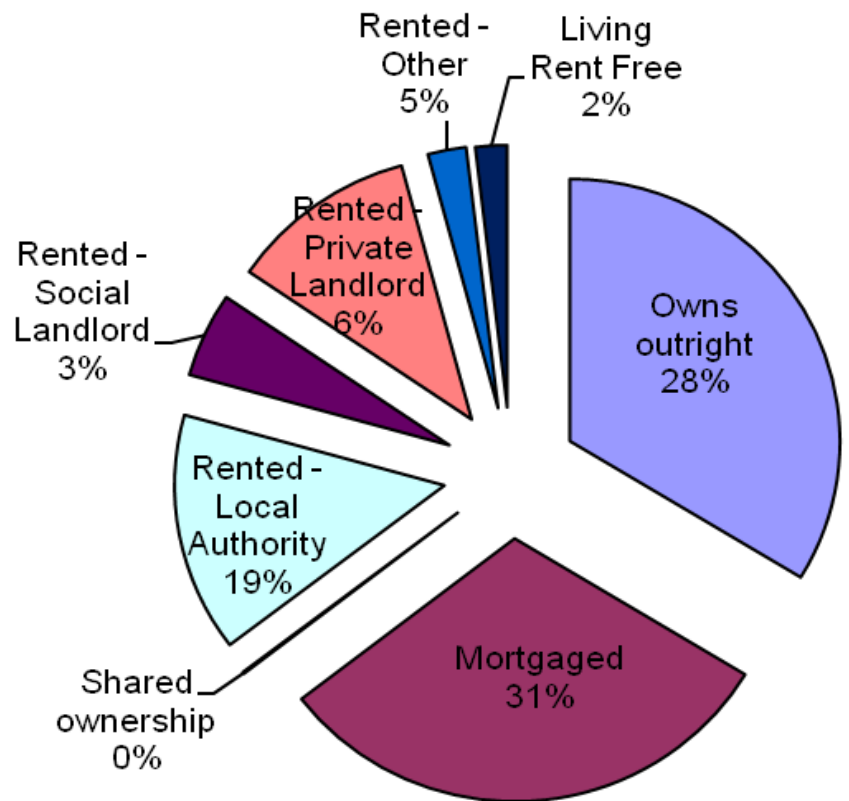
## HOUSING

The area's housing consists mostly of semi-detached houses and a higher proportion of terraced housing in comparison to the number of detached. Caravan or other mobile temporary structure is the smallest group. The ward consists of 220 local authority owned properties and 77 Housing Association properties.

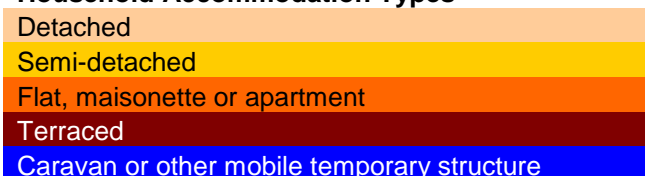
### Household Accommodation Types



Household Tenure	%
Owns outright	33.7
Mortgaged	30.9
Shared ownership	0.1
Rented - Local Authority	14.7
Rented - Social Landlord	5.2
Rented - Private Landlord	11.3
Rented - Other	2.3
Living Rent Free	1.9



### Household Accommodation Types



## SOCIO-ECONOMIC CHARACTERISTICS

- ⇒ The estimated median household income for Dafen, based on CACI's 2013 'PayCheck' data, is £22,198 which is the 18<sup>th</sup> lowest (of 58 wards) in Carmarthenshire and 4.7% below the Carmarthenshire median of £23,284.
- ⇒ The social profile information indicates a higher than average level of people in semi-routine/routine occupations (Levels 6-7) and a higher proportion of people who have never worked or are long term unemployed (Level 8).

Social Profile	Dafen	%	Carmarthenshire %
<i>All people aged 16-74 in households</i>	2478	100	100
<b>1: Higher Managerial &amp; Professional Admin. Occupations</b>	254	10.2	13.8
<b>2: Lower Managerial &amp; Professional Admin. Occupations</b>	436	17.6	19.9
<b>3: Intermediate Occupations</b>	273	11.0	11.6
<b>4: Small Employers &amp; Own Account Workers</b>	166	6.7	12.6
<b>5: Lower Supervisory &amp; Technical Occupations</b>	226	9.1	7.6
<b>6: Semi-routine Occupations</b>	512	20.7	16.7
<b>7: Routine Occupations</b>	394	15.9	13.0
<b>8: Never Worked &amp; Long Term Unemployed</b>	165	6.7	4.9

Source: 2011 Census, ONS

## ECONOMY AND LABOUR MARKET

Benefit Claimants	Dafen	Rate %	Carmarthenshire Working Population %
Unemployment Benefit (JSA): April 2014	67	3.3	2.5
Incapacity Benefits (ESA/IB/SDA) November 2013	225	10.4	9.2
Income Support: November 2013	65	3.0	2.5
Disability Living Allowance: November 2013	345	16.0	14.3
Pension Credit: November 2013	205	9.5	8.0
State Pension Claimants: November 2013	7125	33.6	39.0

Source: Jobcentre Plus administrative system Dept. for Work & Pensions

Economic Status (people aged 16-74)	Dafen	Dafen %	Carmarthenshire %
<b>Economically Active</b>	1625	65.6	64.9
Employees: Part-time	381	15.4	13.9
Employees: Full-time	930	37.5	33.7
Self-employed	129	5.2	11.0
Unemployed	119	4.8	3.7
Full-time Student	66	2.7	2.5
<b>Economically Inactive</b>	853	34.5	35.1
Retired	378	15.3	18.1
Student	118	4.8	4.5
Looking after home/family	117	4.7	3.8
Permanently sick/disabled	201	8.1	6.8
Other	39	1.6	1.9

Source: 2011 Census, ONS

## WELSH INDEX OF MULTIPLE DEPRIVATION (WIMD)

WIMD 2011 based on fine-grained geography of lower Super Output Areas (LSOAs). The WIMD 2011 is compiled from eight domains, Income, Employment, Health, Education, Housing, Access to Services, Physical Environment and Community Safety and is published at Lower Super Output Area of which there are 112 in Carmarthenshire.

Under WIMD, where Rank 1 is the most deprived, **Dafen 1** ranks 86 out of 112 LSOAs in Carmarthenshire and is ranked 1191 in Wales from 1896 LSOAs, whilst **Dafen 2** ranks 27 out of 112 LSOAs in Carmarthenshire and is ranked 584 in Wales from 1896 LSOAs.

The highest level of deprivation attributed to **Dafen 1** is the Physical Environment domain, being ranked 13<sup>th</sup> in Carmarthenshire and 215 in Wales for this domain. In **Dafen 2** the Income domain is the most prominent ranking 14<sup>th</sup> in Carmarthenshire and 383 in Wales for this domain.

### Dafen 1 - Cilsaig

### Dafen 2 - Penywaer Capel

LSOA	Overall Index		Domains: Income		Employment		Health		Education		Housing		Access to Services		Physical Environment		Community Safety	
	Rank	Wales	Rank	Wales	Rank	Wales	Rank	Wales	Rank	Wales	Rank	Wales	Rank	Wales	Rank	Wales	Rank	Wales
Dafen 1	86	1191	82	1208	65	941	68	976	86	1294	86	1359	83	995	13	215	46	1258
Dafen 2	27	584	14	383	21	400	89	1230	21	510	36	826	91	1193	30	502	61	1420

Source: Welsh Index of Multiple Deprivation 2011 (released August 2011), Welsh Assembly Government.

Note: LSOAs ranked 1-112 (Carmarthenshire), 1-1896 (Wales).

## CRIME

Dafen	Offence Group										Annual Total
	Violence against the Person	Sexual Offences	Robbery	Burglary	Auto crime	General Theft	Fraud and Forgery	Criminal Damage	Drug Offences	Other	
Fiscal Year (1st April to 31st March)											
2008/2009	30	0	0	18	10	23	1	26	7	2	117
2009/2010	33	3	1	14	10	15	2	33	15	1	127
2010/2011	34	4	0	15	11	33	4	26	10	1	138
2011/2012	36	3	0	7	16	21	0	23	18	2	126
2012/2013	35	4	0	7	9	29	4	21	20	1	130
2013/2014	39	3	0	13	19	22	0	26	17	0	139

Source: Dyfed Powys Police, Headquarters, Llangunor.

**For further information please contact:**

Lesley Rees, Policy & Research Officer

01267 224462

llrees@carmarthenshire.gov.uk