

# Women's Health 2015

## The 23<sup>rd</sup> Annual Congress

April 16–19

Grand Hyatt • Washington, DC

## The Congress

Nearly 1,000 attendees find the interdisciplinary Congress agenda compelling and timely, the number of CME/CNE credits generous, and the location accessible. Time for questions, sharing information, and networking is scheduled throughout the day and early evening, and our poster sessions and exhibit hall provide up-close interaction. Enjoying the nation's capital during cherry blossom season is an added bonus.

**22 Speakers**  
**Up to 23.75**  
**CME/CNE Credits**  
**2.5 Days**

## Who Should Attend:

*The Women's Health Congress attracts health professionals across broad disciplines including:*

- Physicians
- Physician Assistants
- Advanced Practice Nurses
- Registered Nurses
- Social Workers
- Clinical Psychologists
- Pharmacists
- Researchers
- Policy Makers
- Administrators
- Industry Professionals
- Chaplains
- Students and Residents



## What Attendees are Saying

“*Dynamic Speakers. Every topic essential to my practice. I didn't want to miss a lecture!*”

“*Outstanding opportunities for networking.*”

“*This is a fantastic meeting!*”

“*I plan to make changes to my practice as a result of the new information I learned!*”



# Earn

*...up to 23.75 CME, 20.25 CNE, and 21.75 AAFP Credits in just 2.5 days!*

**Women's Health 2015: The 23<sup>rd</sup> Annual Congress** provides the *maximum number of credits in just 2.5 days!* Additional credits may be available based on the approval of a pre-conference workshop.



# Learn

*...new research & best practices in a collaborative setting.*

We offer 30 presentations covering a wide range of topics across the continuum of care, including screening, diagnosis, care management, and patient education.

# Meet

*...the best of the best in women's health.*

Renowned experts comprise our all-star roster of presenters—each is committed to growing the field of Women's Health and is accessible to interact on a deeper level.



# Celebrate

*...the accomplishments of leaders in Women's Health.*

Our Awards Reception is inspiring to all who attend. Each year the Congress honors individuals who are improving access to best practices through their breakthrough research, advocacy, and support of women's health initiatives around the world. Attendees enjoy the opportunity to engage with honorees and each other in a convivial community setting.





# Share

*...your innovative research and programs with 1,000 colleagues.*

Submit an abstract and present a poster. Raise visibility for your program while establishing yourself and your team as important resources in your field.

# Build

*...your professional network in the United States, and internationally.*

Connecting with colleagues is crucial to strengthening your career, regardless of your seniority. Our networking breaks are a perfect time to forge new professional partnerships.



# Support

*...the Congress and The Academy of Women's Health.*

Make an impact, whatever your financial commitment.

**International travel support** enables the Academy to fund travel to the Congress for those from countries outside North America who would otherwise be unable to attend.

**Friends of the Academy** helps to further our important work. You're encouraged to make a tax deductible contribution of your choice.

Contact us at: [awh@academyofwomenshealth.org](mailto:awh@academyofwomenshealth.org)

# Join

*...the Academy of Women's Health.*

An interdisciplinary, international association of professionals who work across the broad field of Women's Health, *AWH* shares up-to-date advances and options in clinical care that will enable the best outcomes for patients.

*AWH* offers many benefits including discounted registration fees and a special members-only reception at the Congress.

Members also receive a free subscription to the *Academy's* peer-reviewed **Journal of Women's Health**; discounted rates to other health-related journals; and access to international education programs and members-only LinkedIn.

# April 16–19, 2015

## Accreditation

This activity is jointly provided by Postgraduate Institute for Medicine, Academy of Women's Health and Institute for Professional Education.



### Physician Continuing Medical Education Accreditation Statement

This activity has been planned and implemented in accordance with the accreditation requirements and policies of the Accreditation Council for Continuing Medical Education (ACCME) through the joint providership of Postgraduate Institute for Medicine, The Academy of Women's Health and Institute for Professional Education. The Postgraduate Institute for Medicine is accredited by the ACCME to provide continuing medical education for physicians.

#### Credit Designation

The Postgraduate Institute for Medicine designates this live activity for a maximum of **23.75 AMA PRA Category 1 Credit(s)**<sup>™</sup>. Physicians should claim only the credit commensurate with the extent of their participation in the activity.

### Nursing Continuing Education

#### Credit Designation

This educational activity for **20.25 contact hours** is provided by Postgraduate Institute for Medicine.

Designated for **8.25 contact hours** of pharmacotherapy credit for Advance Practice Registered Nurses.

#### Accreditation Statement

Postgraduate Institute for Medicine is accredited as a provider of continuing nursing education by the American Nurses Credentialing Center's Commission on Accreditation.

Presented by



best practices for better outcomes

Journal of **Women's Health** **VCU** an Institute for Women's Health



In partnership with

NIH Office of Research on Women's Health

HHS Office on Women's Health

Society for Women's Health Research

### AAFP Accreditation

This live activity, Women's Health 2015: The 23<sup>rd</sup> Annual Congress, with a beginning date of 04/16/2015, has been reviewed and is acceptable for up to **21.75 prescribed credits(s)** by the American Academy of Family Physicians. Physicians should claim on the credit commensurate with the extent of their participation in the activity.

**A statement of Credit will be issued only upon receipt of a completed activity evaluation form and will be emailed to you within 4 weeks.**

### Statement of Need/Program Overview

This program is designed to provide physicians, nurses and allied healthcare professionals with a broad range of topics relevant to women's health across the lifespan. This includes the most recent research and its application to patient care, and the most current information in diagnosis and therapeutics.

### Disclosure of Conflicts of Interest

Postgraduate Institute for Medicine (PIM) requires instructors, planners, managers and other individuals who are in a position to control the content of this activity to disclose any real or apparent conflict of interest (COI) they may have as related to the content of this activity. All identified COI are thoroughly vetted and resolved according to PIM policy. The existence or absence of COI for everyone in a position to control content will be disclosed to participants prior to the start of each activity.



#### Congress Chair

**SUSAN KORNSTEIN, MD**

Executive Director, VCU Institute for Women's Health  
Editor-in-Chief, Journal of Women's Health  
President, Academy of Women's Health



#### Congress Co-Chair

**LISA ELLIS, MD, FACP**

Chief Medical Officer, Medical College of Virginia;  
Associate Professor, Internal Medicine and OB/GYN  
VCU Institute for Women's Health



#### Congress Co-Chair

**WENDY KLEIN, MD, MACP**

VCU Institute for Women's Health



To register visit: [www.congress.academyofwomenshealth.org](http://www.congress.academyofwomenshealth.org) or call us: 914 740-2181

# The Best of the Best in Women's Health

## Thursday, April 16

**2:30–5:00pm Pre-Conference Workshop**

**7:15pm Academy of Women's Health Board Dinner**

## Friday, April 17

**6:15am Yoga: Embrace the Day**

**7:00am REGISTRATION & CONTINENTAL BREAKFAST**

**7:45am Welcome Opening Remarks**

**8:00am The Worsening Health of American Women: Emerging Evidence**

Steven Woolf, MD, MPH, Professor of Family Medicine; Director, VCU Center for Human Needs  
Virginia Commonwealth University School of Medicine

**8:45am Breast Cancer Staging: Current Strategies**

Elisa Port, MD, Associate Professor of Surgery  
Icahn School of Medicine at Mt. Sinai

**9:30am Evaluation & Management of Premenopausal Women with Low Bone Density**

Elizabeth Shane, MD, Professor of Medicine  
Columbia University College of Physicians & Surgeons

**10:15am Poster (CME); Networking Break; Exhibit Hall**

**10:45am Diabetes in Women: Improving Outcomes**

Kristen Gill Hairston, MD, MPH, Associate Professor of Internal Medicine; Medical Director, Joslin Diabetes Center  
Wake Forest University School of Medicine

**11:30am Hysterectomy: Current Controversies**

Catherine Matthews, MD, Associate Professor of Obstetrics & Gynecology; Chief, Division of Urogynecology  
University of North Carolina at Chapel Hill

**12:15pm LUNCHEON PRESENTATION**

**1:30pm Trudy Bush Lecture: Using Progestins in Clinical Practice**

Michael Policar, MD, MPH, Professor of Obstetrics, Gynecology & Reproductive Sciences  
University of California San Francisco School of Medicine

**2:15pm HPV Risk & Cervical Cancer Screening: Making Sense of the Guidelines**

Mona Saraiya, MD, MPH, Medical Officer and Associate Director, Division of Cancer Prevention and Control; National Center for Chronic Disease Prevention and Health Promotion  
Centers for Disease Control and Prevention

**3:00pm Poster (CME); Networking Break; Exhibit Hall**

**3:30pm Sex & Gender in Cardiac Testing: Choosing Wisely**  
Harmony Reynolds, MD, Assistant Professor of Medicine  
Cardiovascular Clinical Research Center  
NYU Langone Medical Center

**4:15pm News You Can Use: Recent Studies That Have Changed My Practice**

Melissa McNeil, MD, MPH, Professor of Medicine, Obstetrics, Gynecology & Reproductive Sciences; Chief, Women's Health, Department of Medicine  
University of Pittsburgh Medical Center

**5:00pm PMS & PMDD: Therapeutic Approaches**

C. Neill Epperson, MD, Professor of Psychiatry, Obstetrics & Gynecology; Director, Penn Center for Women's Behavioral Wellness  
Perelman School of Medicine at the University of Pennsylvania

**6:00pm Academy of Women's Health – Member Reception**

## Saturday, April 18

**6:15am Yoga: Embrace the Day**

**7:00am Breakfast Symposium**

**8:30am The Calcium Supplement Controversy: Now What?**

Douglas Bauer, MD, Professor of Medicine, Epidemiology and Biostatistics  
University of California San Francisco School of Medicine

**9:15am Sex & Gender Differences in Stroke**

Cheryl Bushnell, MD, MHS, Associate Professor of Neurology; Director, Wake Forest Baptist Stroke Center  
Wake Forest Baptist School of Medicine

**10:00am Poster (CME); Networking Break; Exhibit Hall**

**10:30am Interstitial Cystitis & Painful Bladder Syndrome: Clinical Strategies**

Susan Hoffstetter, PhD, WHNP-BC, FAANP, Associate Professor of Nursing, Section of Urogynecology  
St. Louis University School of Medicine

**11:15am Weight Management in Women**

Ann Smith Barnes, MD, MPH, Associate Professor, Medical Director, Weight Management Services and Disease Prevention  
Baylor College of Medicine

**12:00pm LUNCHEON PRESENTATION**

**1:30pm Vivian Pinn Women's Health Research Keynote Perimenopause: From Research to Practice**

Nanette Santoro, MD, Professor and E. Stewart Taylor Chair of Obstetrics & Gynecology  
University of Colorado School of Medicine

**2:15pm Managing Thyroid Disorders in Women: Common Dilemmas**

Douglas Bauer, MD, Professor of Medicine, Epidemiology and Biostatistics  
University of California San Francisco School of Medicine

# Washington, DC

**3:00pm** Poster (CME); Networking Break; Exhibit Hall

**3:30pm** Common Musculoskeletal Problems in Women

Sheila Dugan, MD, Associate Professor of Physical Medicine & Rehabilitation  
Rush Medical College

**4:15pm** Lactation & Maternal Health: What Every Clinician Needs to Know

Eleanor Bimla Schwarz, MD, MS, Professor of Medicine, Division of General Internal Medicine  
University of California, Davis

**5:15pm** Poster Reception; Congress Awards; Exhibit Hall

## Sunday, April 19

**6:15am** Yoga: Embrace the Day

**7:00am** Breakfast Symposium

**8:30am** Another V Word: Vulvodynia

Susan Hoffstetter, PhD, WHNP-BC, FAANP, Associate Professor of Nursing, Section of Urogynecology  
St. Louis University School of Medicines

**9:15am** Bariatric Surgery: Pearls & Pitfalls

Lucy Faulconbridge, PhD, Assistant Professor of Psychology, Director of Research, Center for Weight and Eating Disorders  
University of Pennsylvania Perelman School of Medicine

**10:00am** Poster (CME); Networking Break; Exhibit Hall

**10:30am** Managing Contraceptive Side Effects: Clinical Insights

Michael Policar, MD, MPH, Professor of Obstetrics, Gynecology & Reproductive Sciences  
University of California San Francisco School of Medicine

**11:15am** Acute Pelvic Pain: A Practical Approach

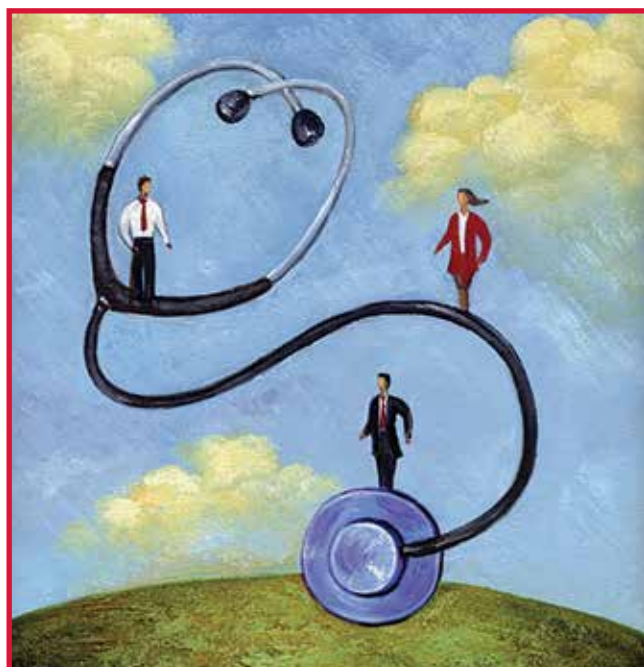
Christine Isaacs, MD, Associate Professor of Obstetrics and Gynecology  
Virginia Commonwealth University School of Medicine

**12:00pm** Adjourn

## Learning Objectives

After completing this activity, the participant should be better able to:

- Implement the most current guidelines for screening a variety of disease states affecting women across their lifespan.
- Employ evidence-based approaches for the diagnosis of diseases impacting all aspects of women's health.
- Incorporate sex and gender in evidence-based management prevention strategies to address disease states impacting women's health.
- Utilize evidence-based treatment strategies to provide care for women's sexual health including care for women with a history of sexual assault.
- Provide care, counsel, and education to female patients to promote health management and disease prevention.



# Women's Health 2015 The 23<sup>rd</sup> Annual Congress

April 16–19

**Register Online:**

[www.congress.academyofwomenshealth.org](http://www.congress.academyofwomenshealth.org)

**By Fax:** 914-740-2105

**or Mail To:** Academy of Women's Health/WH2015

140 Huguenot Street-3<sup>rd</sup> Floor

New Rochelle, New York 10801

## Hotel and Travel

Women's Health 2015 will be held at the **Grand Hyatt Washington**  
1000 H Street NW · Washington, DC 20001 USA

Phone: 1-202-582-1234 · Fax: 1-202-637-4781

*A block of rooms is being held at the following rates per night:*

**Single and Double Occupancy**      \$219

**Triple Occupancy**                      \$244

Hotel reservations can be made, changed, or modified at:

<http://bit.ly/1o7MHad>

**or by calling 1-888-421-1442. Please be sure to mention that you are attending Women's Health 2015: The 23<sup>rd</sup> Annual Congress.**

Reservations must be received on or before 5:00 pm, **Wednesday, March 18, 2015.**

### Area Airports

**Reagan National Airport:** Approximately 5 miles from the hotel

**Dulles International Airport:** Approximately 27 miles from the hotel

Please call our official travel agent, Wayne Coven, Empress Travel, (800) 933-9054 or (212) 410-9990 for flight information.

For complete travel information, please visit the Congress website:

[www.congress.academyofwomenshealth.org](http://www.congress.academyofwomenshealth.org)



### Americans with Disabilities Act

Event staff will be glad to assist you with any special needs (ie: physical, dietary, etc.). Please contact Nilda Rivera prior to the live event at (914) 740-2181.



## About the Journal



The Official Journal of the *Academy of Women's Health* and the Society for Women's Health Research, this authoritative journal is the leading source of information for meeting the unique challenges of providing optimal health care for women. Coverage includes the latest advances in diagnostic and therapeutic procedures, as well as innovative research in gender-based biology.

### Please Print:

Name \_\_\_\_\_ Degree (s) \_\_\_\_\_

Medical Specialty \_\_\_\_\_ Title \_\_\_\_\_

Affiliation \_\_\_\_\_

Address \_\_\_\_\_

City \_\_\_\_\_ State \_\_\_\_\_ Zip \_\_\_\_\_

Phone \_\_\_\_\_ Fax \_\_\_\_\_

Email \_\_\_\_\_

Special Dietary Needs \_\_\_\_\_

**Join the Academy of Women's Health**  
[www.academyofwomenshealth.org](http://www.academyofwomenshealth.org)

**JOIN NOW  
& SAVE**

### Please Check All Appropriate Boxes:

#### Registration

##### Academy of Women's Health Members

	\$ Early-bird (by Dec. 5)	\$ Regular Rate (after Dec. 5)
<input type="checkbox"/> Physician/PhD/Policy maker/Industry Professional	495	595
<input type="checkbox"/> Nurse/Allied Health Professional	360	430
<input type="checkbox"/> Student/Intern/Resident	195	245

##### Non-Members

<input type="checkbox"/> Physician/PhD/Policy maker/Industry Professional	695	800
<input type="checkbox"/> Nurse/Allied Health Professional	495	595
<input type="checkbox"/> Student/Intern/Resident	345	415

##### Contributions

<input type="checkbox"/> International Travel Support	\$ _____	\$ _____
<input type="checkbox"/> Friends of the Academy	\$ _____	\$ _____

### Payment Options

**Enclosed is my check/money order for \$** \_\_\_\_\_

Make checks payable to Institute for Professional Education, in US currency and drawn on a US bank.

**Charge in the amount of \$** \_\_\_\_\_

American Express     Visa/MasterCard     Discover

Card # \_\_\_\_\_

Security Code \_\_\_\_\_ Exp. Date \_\_\_\_\_

Name on Card \_\_\_\_\_

Billing Address \_\_\_\_\_

Signature \_\_\_\_\_

**Cancellation Policy:** Written cancellations received prior to February 1, 2015 will receive a refund minus an administrative charge of \$100. Cancellation after this date is non-refundable; however, substitutions from the same company are welcomed. If for any reason this conference is cancelled, Academy of Women's Health is not responsible for covering airfare, hotel, or other costs incurred by conference registrants.

Institute for Professional Education

140 Huguenot Street, 3rd Floor

New Rochelle, New York 10801-5215

**Register Today!**

**Women's Health 2015**

**The 23<sup>rd</sup> Annual Congress**

April 16–19

Grand Hyatt • Washington, DC



*best practices for better outcomes*

**Join the Academy Today  
and Save on Registration**

[www.academyofwomenshealth.org](http://www.academyofwomenshealth.org)



**Join Us!  
Pre-Conference  
Workshop  
April 16**

**Women's Health 2015  
The 23<sup>rd</sup> Annual Congress**

**April 16–19**

Grand Hyatt • Washington, DC

**The Most Comprehensive  
Women's Health Conference of the Year**

**Posters**



**Networking**



**Presentations**



**Awards**



Presented by



*best practices for better outcomes*

Journal of  
**Women's Health VCU** Institute for Women's Health



Postgraduate Institute  
for Medicine

[www.congress.academyofwomenshealth.org](http://www.congress.academyofwomenshealth.org)