

Netherhall
SIXTH FORM
PROSPECTUS



2015



CONTENTS

WHY CHOOSE NETHERHALL?	4
WELCOME TO NETHERHALL SIXTH FORM CENTRE	6
TIME TO GROW	7
FACILITIES	8
ENRICHMENT	10
TRIPS, DRAMA, MUSIC, CLUBS	12
SIXTH FORM COUNCIL	13
SUPPORT AND GUIDANCE	14
HIGHER EDUCATION AND CAREERS	15
YEARS 12/13 ROADMAP	16
APPLICATIONS AND ADMISSIONS	17
ENTRY REQUIREMENTS	18
ART, CRAFT & DESIGN / FINE ART	19
BIOLOGY	20
BUSINESS	21
CHEMISTRY	22
CORE MATHS	23
CREATIVE WRITING	24
DRAMA	25
ECONOMICS	26
ENGLISH LANGUAGE & LITERATURE	27
ENGLISH LITERATURE	28
GEOGRAPHY	29
GOVERNMENT & POLITICS	30
HEALTH & SOCIAL CARE	31
HISTORY	32
ICT	33
MATHS	34
FURTHER MATHS	35
MEDIA STUDIES	36
PE	37
PHILOSOPHY & ETHICS	38
PHOTOGRAPHY	39
PHYSICS	40
PRODUCT DESIGN	41
PSYCHOLOGY	42
SOCIOLOGY	43
A-LEVEL RESULTS 2014	44
CONTACT US	46
GETTING TO NETHERHALL SIXTH FORM CENTRE	47

WHY CHOOSE NETHERHALL?

"Netherhall has supported me in all aspects of my academic life, in addition to helping me develop into a competent student with the support and guidance of the teachers and staff. Coming to this college has been a very valuable experience and has prepared me properly for university."



"Netherhall has provided me with a friendly and supportive environment which I feel has helped me a lot over the past two years. The teachers and Sixth Form staff are incredibly supportive in regards to helping students achieve the best that they can, and also prepare them for the vocation or educational path they may go on to choose."



"Netherhall has supported and accommodated me through subject changes, career choices and has prepared me for life in and beyond education, equipping me with the skills that will be essential in any working environment. The teachers have inspired me to aim for goals I never believed I could have reached before, this is why I would recommend any student to apply to Netherhall Sixth Form, as they are dedicated to giving you the best start in life."



"Where to begin – Netherhall has taught me so much whilst I've been here, it has enabled and allowed me to evolve as a person, not just focusing on my education but also on my life skills, being able to cope and operate in the real world. Now after being at Netherhall for seven years, I'm leaving, but I am leaving as a confident, independent person, ready for what the future holds."



IT'S WHERE INDIVIDUALS MATTER.



WELCOME TO NETHERHALL SIXTH FORM CENTRE

Thank you for your interest in Netherhall Sixth Form.

Do come and visit us during our Open Evening on Thursday 6th November 2014 from 6.00 – 8.30pm, I know that you will be excited by what is available.

We offer a large range of A-level courses, but what makes us different from other Sixth Form Centres is that we have approximately 300 students in the Sixth Form. This means that we can teach A-levels in smaller group sizes and can provide additional individual guidance.

From September 2015 we see the introduction of the first wave of new A-levels in a range of subjects. These are marked with 'new' in the prospectus.

As the exam boards confirm the content of their courses we will update the syllabuses which we will offer and the specific subject content that students will be able to follow, on our college website.

Students will be able to select three A-levels from all of the courses available. Students who sit the

newly revised A-level subjects will sit exams in these subjects at the end of Year 13, we are not offering AS exams in these A-levels. The subjects which are not revised in September 2015 will be examined both at the end of Year 12 and Year 13, students will receive AS-level passes in these subjects. In most cases we expect students to be studying a mixture of both newly revised and existing A-levels from September 2015.

Netherhall Sixth Form aims for excellence and I am convinced that this can only be achieved in an environment where students are secure and happy. Our expectations are that Sixth Form students will work hard and, therefore, be able to take advantage of the expertise and commitment of our staff. We are able to provide high quality teaching within excellent study facilities.

I am proud of the pastoral support which is available to all students and which encourages them to achieve their full potential. This combines with an excellent Enrichment Programme and a wide range of social activities, many of which are organised by an energetic Sixth Form Council.

However, I don't expect you to simply take my word for it. Come and see for yourselves. Ask the students who are currently studying with us and I am confident that you will get a very positive response from them.

Jo Gurvidi
Head of Sixth Form

TIME TO GROW

There has never been a more exciting time to be a Netherhall Sixth Form student. With increasing success rates at AS and A2 and a welcoming ethos where each individual matters, we are a centre that promotes success in everyone. But, being a Sixth Form student is not just about studying and exams. It's a time for broadening your horizons, finding your place in society and developing yourself.

There is no getting away from the fact that the world is a difficult place for young people at the moment; the employment market is competitive and the cost of living is rising. At Netherhall, we work hard to prepare our students for both academic and societal success. Not only do we boast a fine breadth of specialist teaching staff, but our targeted pastoral programme will ensure that you are supported and nourished during your time with us. Our aim is to reach beyond your academic potential, building resilient and successful individuals along the way.

Manage Your Own Time

The Netherhall day is split into five lessons each lasting one hour with time in the morning for one-to-one pastoral support. Break-times can be spent either in our newly refurbished Common Room, or in the Sixth Form cafe area.

Your timetable will also allow sessions for independent study during which students can work silently in our computer room or in our staffed Library resource centre.

Stand up for what you believe

Learning is important to us but so are your interests. Netherhall offers a range of opportunities to develop personal and political beliefs. Students are encouraged to develop their voice and rhetorical skills by representing their peers on the Student Council or by enjoying some verbal jousting in our Debate Club. Your opinions matter.

Make new friends

Our sixth-form is a true representation of the multi-cultural society in which we live. Our students join us from many different social, ethnic and religious backgrounds. It is this diversity which makes us a vibrant and supportive environment built on a foundation of respect and tolerance. Not only does this make Netherhall a great place to make friends, but it also provides a marvellous platform on which to be yourself with confidence.

Be ready for the next step

Throughout your time at Netherhall, you will have access to specialist careers advice as well as timetabled opportunities to attend careers fairs and further education programmes.

Work experience placements are also available to students who wish to develop a deeper understanding of life in the world of work.

The college also offers the Extended Project Qualification which will develop a range of higher order skills that both Universities and employers value.

Give something back

Community is important to us. A strong community is the fabric of a successful society and so we encourage students to consider their place within it. Students can choose to contribute to the wider community of the school and locality by volunteering in a range of ways perhaps as part of our Student Action scheme or by running a series of fundraising activities.

FACILITIES



Our students enjoy a modern purpose-built building with state-of-the-art facilities, their own landscaped areas, comfortable common rooms and a well stocked café.



ENRICHMENT

Employers and Universities look for students who involve themselves in Sixth Form and community life. A competitive market place means you should get involved outside of the classroom. These are important things that add weight to your UCAS personal statements and references on CVs or application forms. Some activities are exclusive to Sixth Formers, while others give them the opportunity to participate in whole school activities.

Sixth Form Council

Each form nominates one person to represent them on the council, chaired by the Student President. There are regular meetings where students get to have their say about various issues of Sixth Form life before taking this back to their own form groups.

Social Events

The council organises social events such as barbecues, a Welcome Event, Summer Ball, Charity Auction and the Quiz night.

Peer-mentor schemes

Sixth Form students are given opportunities to support younger students within Netherhall. They act as mentors to help raise the self esteem and achievement of their younger learners.



Duke of Edinburgh

Some students work towards the Gold Award during their time in the Sixth Form. You do not have to have completed the bronze or silver to be able to get involved. Each student follows a programme to help them achieve the five disciplines: Skill, Service, Physical recreation, Residential project and Expedition.

Sport

Netherhall is a specialist Sports College and therefore offers a wide range of sporting activities at all levels. Many of our teams have had great success in competitive sports such as Basketball, Football, Rugby and gymnastics. There are numerous opportunities for more sociable sports involvement, and of course, an alternative sports day!

Sports Leadership Award

We are able to offer Sixth Form students training for this recognised leadership qualification, which empowers them to run group sessions for younger children. Students in Year 12 may earn this recognised Level 2 qualification, which qualifies them to run sporting activity sessions for groups in the community. Although this is a valuable qualification for anyone considering a career in sport, it is open to all and runs alongside the General Studies programme. In Year 13, this could lead into the Netherhall Higher Leader programme which is the pinnacle of the Leadership programme at Netherhall.

Debating Club

This society is now established and had it's first entry into the English speaking Union's National Competition in 2008. The students were hugely successful and were crowned Regional champions. A highly competitive interform debate competition runs annually and involves many students.



Work Experience

All students are encouraged to take opportunities to develop their own skills. On occasions we have worked flexibly with students who have, for example, arranged work-shadowing opportunities within local organisations.

Voluntary work in school/ community

This is not about developing students own employment skills, but rather about giving back to the community. Students volunteer within a range of local organisations or with individuals, including here at Netherhall. The Student Action Programme is very popular and gives students the opportunity to give something back to their local communities.

Charity events

Sixth Form students often adopt various charities and host fundraising events on their behalf. Fancy dress days, sponsored sports and discos have been some of the ways in which both local and national charities have been supported.

Mock Trial

In 2010, Year 12 students were invited to take part in a Mock Trial. This was a joint venture with the Stephen Perse Sixth Form. The students relished the opportunity to work with Barristers and re-enact a trial in the Cambridge Crown Court. This great experience has been repeated in 2011, 2012 and won by Netherhall students 2013.



where
individuals
matter

TRIPS, DRAMA, MUSIC, CLUBS

From international study-based field trips to arts festivals and full-on theatre productions, there are many opportunities for students to get involved with a range of extra-curricular activities. The Drama and Music Departments work together to produce extremely successful productions to sell-out audiences each year.

Study trips

Over the last five years, we've been to Iceland, Venice, Paris, Barcelona and Berlin. These fieldwork trips were organised by the Geography, Biology, Photography, Business and Economics Departments as part of their study enhancement programmes.

Research opportunities are also available through links we have developed with other academic institutions.

Arts Festival

In the Summer Term the Art, Drama and Music Departments work together to create the Netherhall Arts Festival which showcases the wealth of creative talent across the school.



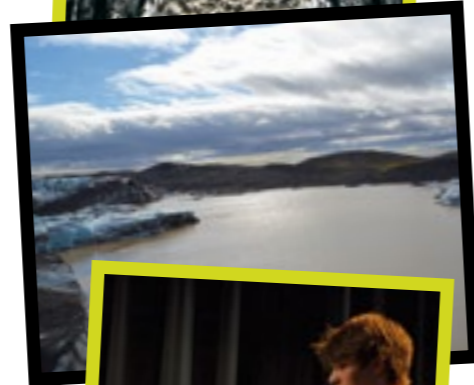
Drama clubs and performances

The Drama Department runs a number of small-scale productions at both local and national level, including the **Shakespeare for Schools Festival** which involves a Theatre performance in Cambridge.

Students across all year groups are given opportunities to attend live theatre, and the weekly Drama Club is open to all year groups during the Spring and Summer Terms, providing further opportunities for students to take part in drama activities outside their lessons.

Musical clubs and performances

There are many opportunities for students to perform in formal and informal events throughout the year. Our musical clubs include Ukelele, Jazz Band, Stage Band, Percussion Ensemble, Choir and many more. Practice rooms are available for sixth formers and rehearsals can be held in the music suite.



SIXTH FORM COUNCIL



Welcome to Netherhall Sixth Form!

The council is here to support you in your life as a Sixth Form student. We will help you to settle in as quickly as possible, encouraging you to get ready for effective study and enjoyable socialising.

Each form group from Year 12 and 13 elects one person to represent them on the council. These will be chosen during your first few weeks at Netherhall.

Netherhall has a friendly atmosphere with approachable staff and we highly recommend it! The student council acts as a link between students and staff.

Although there is a lot of work studying for A-Levels, Netherhall also offers a wide range of extra activities and social events. We are involved in the organisation of barbecues, a welcome

event, the Summer Ball, a charity auction and fundraising for local and national charities... amongst other things.

The Sixth Form is run to help students achieve their aims and offers a hard-working and friendly atmosphere. With a positive attitude to studying and getting involved, your two years here will be rewarding and memorable.

SUPPORT AND GUIDANCE

The tutorial system

The Head and two Deputy Heads of College have overall responsibility for supporting your studies, assisted by a team of 16 Group Tutors.

Students have a daily registration where they meet to share information, problems or concerns, and arrange mentoring sessions with their Tutors. Additionally, once a week, there is a one-hour Tutorial Period for pastoral activities such as preparing for Higher Education applications, developing Study Skills and Careers Education.

Within these sessions, students also attend the Sixth Form lecture and personal development programme, with presentations from a range of speakers on topics such as self-protection, global travel and enterprise. Students may also meet as a Year Group with the Head of Sixth Form to review current Sixth Form issues and to be inspired and entertained by a programme of outside speakers.

All Sixth Form students participate in our comprehensive assessment and reporting programme. This involves regular monitoring of work and progress, action planning and discussion with Tutors. Parents are kept closely informed of progress with eight regular reports or progress checks and three Parents' Evenings over the two years. There is ready access to the Head and Deputy Heads of Sixth Form at any time.

Pastoral support, student welfare and mentoring

A-level success depends upon students being both well organised and motivated. It is essential that students use private study time positively and effectively.

The Atrium Building has a Sixth Form ICT Study Room that gives continual access to high quality study facilities. A well stocked library also provides an ideal environment for study. There may be times during the two year A-level programme, however, when a student needs more support for a variety of reasons. Subject based learning support is available. This includes a skills based induction programme and may include additional study sessions in exam periods.

The Sixth Form Leadership Team helps the Tutors in providing a support network for the students. Our focus is on student welfare, offering one to one guidance and liaison between students, teachers, parents and outside agencies.

We have set up an Academic Mentoring Scheme where students who are failing to reach their potential are identified at an early stage and assigned to mentors. They are able to provide support and suggest strategies for improvement.



HIGHER EDUCATION AND CAREERS

Adding value

All students in the Sixth Form have their progress measured against a national performance indicator. This measures how much improvement is added from GCSE to A-Level and also allows a National comparison with other Sixth Form Centres in England.

Through the hard work and efforts of those involved in teaching and learning at Netherhall Sixth Form, recent years have seen a wonderful period of success.

Student futures

Even as you consider what subjects you may like to be studying for your A-Levels, it is worth giving some thought to your future plans. A simple tip to help you make your choices is to consider courses you think you will do well in and are going to enjoy. Having said this, there are a few Higher Education courses or career pathways that demand particular subject combinations. Therefore, make sure you talk to the Sixth Form Team if you have a specific degree in mind (for example, Medicine, Law and some Engineering courses do state preferred combinations), or your Careers Tutor who can advise you on the routes into specific employment areas.

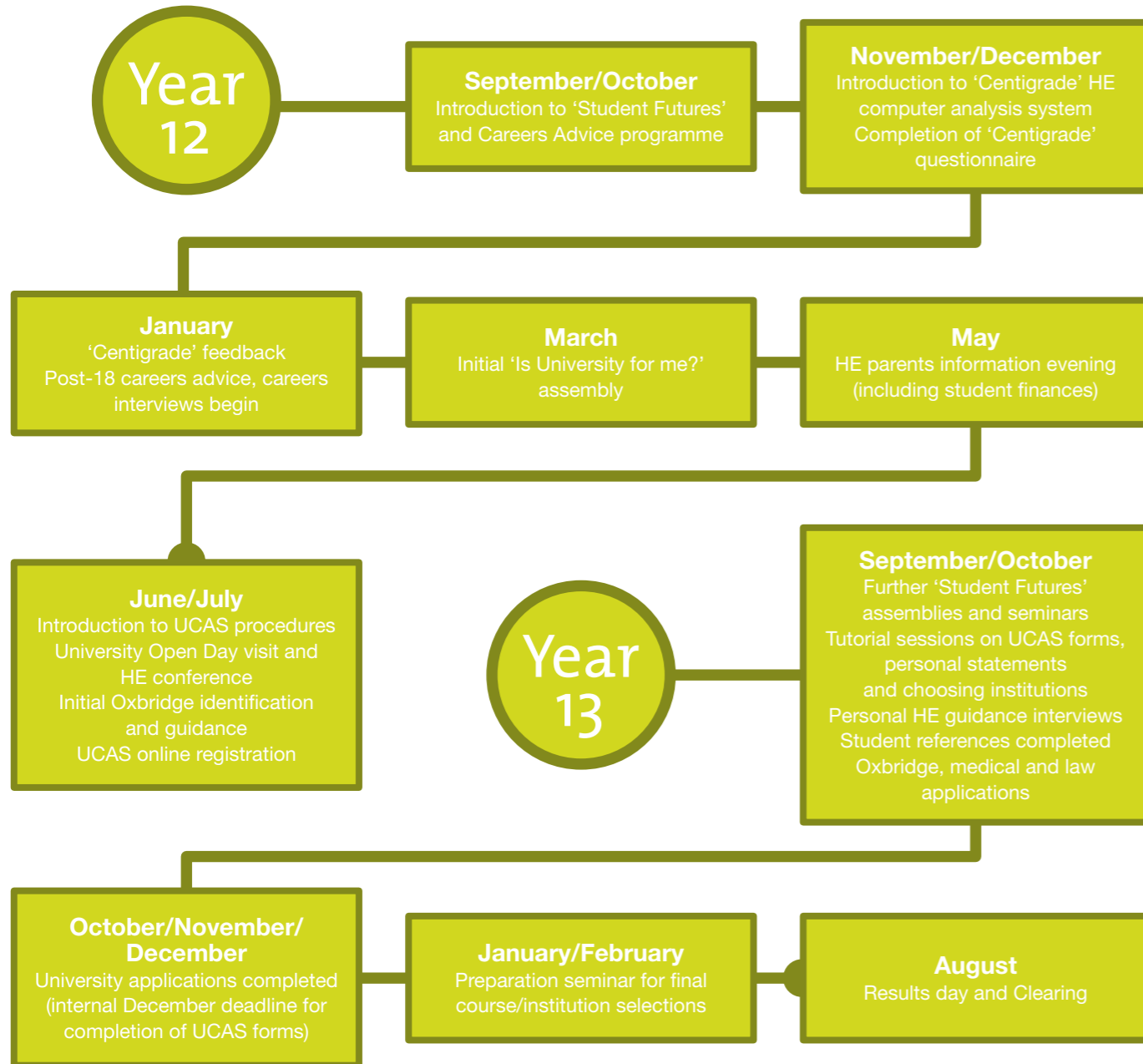
For students who decide that Higher Education is really not for them, the Sixth Form Team or a personal advisor at the Youth Support Service can also offer advice and guidance on employment opportunities.

Don't worry if you simply haven't planned your life that far ahead at the moment! Advice is also on hand throughout the Sixth Form from your group tutors, subject staff, and the Sixth Form leadership team as well as those involved in Higher Education and careers advice.

Destinations in 2014

- 80% of Netherhall students either started courses at Higher Education institutions, deferred entry, took a gap year, or progressed to Further Education courses.
- 20% started in full-time employment or training.

YEARS 12/13 ROADMAP



APPLICATIONS AND ADMISSIONS

Applications from Year 11 students

Netherhall Sixth Form Centre will be in attendance at the Post 16 information evenings hosted at each Cambridge Area Partnership (CAP) school during the first half of the Autumn Half Term. You are encouraged to come and speak with us and ask questions.

You are also invited to visit the Netherhall Sixth Form's Open Evening on Thursday 6th November 2014.

Applications are made using OLAP the online application tool. Year 11 students applying who live outside of the CAP can apply using a paper application form available by contacting the Sixth Form Office. The deadline for applications is the 30th January 2015.

Applications from students at Post-16 centres

Students who are currently completing a Level 2 resit or top-up programme may apply for the two year A/AS-level programme, using OLAP or by completion of a paper CAP application form. The entry requirements will be the same as for Year 11 students. We will take into account GCSE grades achieved at the end of Year 11 and predicted grades on the resit programme of study. Students will need to demonstrate a good attitude to study and attendance.

Late Applicants

Students who apply after the deadline of the 30th January 2015 will have their application considered. However, the offer of a place will depend on availability of places on courses. If a student wishes to apply to join the Netherhall Sixth Form following the publication of GCSE results, applications will be considered on a first-come, first served basis.

Guidance Meetings

If you have selected Netherhall as your first or second choice centre, you will be invited to visit us for a Guidance Meeting in the Spring Term. You will be made a conditional offer of a place by the 20th April 2015, as long as you meet the centre's required standards and there is an availability of places on the courses a you have chosen to study. This meeting will be positive and friendly and is an opportunity for you to ask further questions about your chosen courses. Invitation to a Guidance Meeting does not guarantee a place.

Induction

You will also be invited to attend an Induction Morning in early July. The morning is designed to introduce you to other students, to the Sixth Form procedures, to teaching staff and to the course you are intending to take. Parents and carers will be invited to a Parents' Information Evening in early July, this evening provides an opportunity to hear about the way the college works, opportunities available and be able to ask questions to key Sixth Form staff.

Enrolment

At the end of August – you are required to inform the centre of your GCSE results. If problems arise, these can usually be resolved. Enrolment takes place over two days following the release of the GCSE results. The Head of Sixth Form and Deputy Heads of Sixth Form are available in College following the publication of GCSE results to discuss programmes of study. On enrolment days, we ask students to complete a range of documents and to make a voluntary contribution to the Sixth Form College Fund. This helps to provide a range of additional activities and resources.

Start of the Academic Year

Year 12 students will be invited in for half a day to meet their tutor, collect timetables, discuss courses, complete outstanding paperwork and find classrooms/facilities. Students will be informed of the college start dates on the Induction Morning.

ENTRY REQUIREMENTS

For entry to GCE, AS or A2-level courses, students are normally expected to have 7 GCSE grades of C or above in an appropriate range of subjects including English and Mathematics.

We may, however, review the grades depending on the courses selected and the intended career plan of the student. Individual subjects have specific entry requirements – these can be found on the subject pages in this Prospectus.

Where a student continues onto an A-level from a GCSE subject, it is advisable for a student to have a minimum of a B grade.

Netherhall is happy to accept one Level 2 qualification or equivalent as a pre-cursor to A-levels. A Level 2 qualification would normally be combined with at least 6 GCSEs at Grade C or above. A Level 2 qualification should be awarded at Merit Level or above. However, most students achieve better results than these and we highly recommend students try to exceed this minimum.

The suitability for progression on to specific A-level courses will be discussed at the Guidance Meeting. Students should have a balanced programme of study at Key Stage 4, relevant to their chosen courses and Sixth Form.

Admissions Criteria

When considering your application we will look at the following factors:

- Your estimated (or actual) examination grades.
- The recommendation you have for the course you have selected from your previous/current school or college.
- The reference your school or college provides as part of your application.
- The contribution you are likely to make to the life of the Sixth Form.
- The number of places available on the course for which you are applying.

When Netherhall Sixth Form is over-subscribed, the college will give priority to students within the Cambridge Area Partnership (CAP). Applications from suitable qualified students will be considered against the following criteria, in priority order:

- Students who name Netherhall as their first choice centre.
- Whether your home or current school is in the CAP area.
- Students whose application reaches the centre by the deadline date of Friday 30th January 2015.
- The course is not available where you live.

Review/Appeal Procedure

Should a parent or carer of an applicant who is not offered a place believe that we have failed to follow our admissions policy, they have a right to request a review of the decision made. Such a request should be sent to the Principal within two College working weeks of

receiving the decision, stating clearly the reasons for the review. Before writing we would encourage parents/carers to discuss the application and the concern with the Head of Sixth Form. The Principal's decision will be final in relation to whether or not an offer is made.

Examination Entry Policy

It is our normal practice to enter all our students, at the Centre's expense, for all examinations for which we have prepared them. This applies to Advanced Level (AS, A-level and Applied GCE courses) and to GCSE examinations.

Resit examinations are available in all AS/A2 examinations modular courses. Students will only be entered for resit examinations at parents' or student's own expense.

In the exceptional case of a student failing to achieve the minimum attendance rate of 90% or failing to prepare adequately, the college reserves the right not to make the entry. This will always be discussed with the student and parents who will then have the option to enter at their own expense.

Withdrawal of Courses

Unfortunately there is no guarantee all courses will run. If a course attracts an insufficient number of students it may not be timetabled for September 2015. However, every effort will be made to ensure the continuation of all courses in this Prospectus.

ART, CRAFT & DESIGN / FINE ART

new

We will challenge and develop your skills, exploring a wide range of media and techniques, engaging with the visual world through personal responses and creative thinking.



We offer two Art A level courses, both taught side by side.:

- ART, CRAFT & DESIGN
- FINE ART

We start with a foundation offering a broad-base course of study; of 2D, 3D and a range of media, traditional methods and contemporary processes.

Drawing forms an essential part of the development process, from initial idea to finished work; from rough sketches to visual representation of the world.

Students then work across any combination of disciplines, including: painting, drawing, mixed media,

printmaking, lens-based image making, sculpture, illustration, fine art, textiles and design craft.

Course structure

■ Component 1: 60%
Working to a theme, this component allows you to generate and develop ideas, research primary and contextual sources, record practical and written observations, experiment with media and processes, and refine ideas towards producing resolved outcome(s).

■ Component 2: 40%
Working on an externally set theme as a starting point for your preparatory studies. The aim is to develop practical

knowledge and critical understanding of ART in response to the theme, through investigating and exploring media to realise creative intentions. The final outcome(s) will be created during a 15 hour period of sustained focus under examination conditions.

Assessment

A balance of studio support sessions and mentoring; with monthly formal assessments through group discussion & presentations as well as individual tutorials.



Entry requirements: 7 GCSEs at Grade C including Mathematics and English.

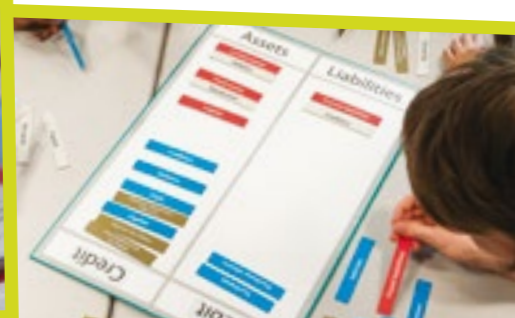


Course contact: Jackie Williams
www.netherhallsf.com

BIOLOGY

new

Biology is at the centre of what we are and the world we live in. The developments in Biological sciences are rapid and fascinating with a new discovery every day – find out what it is all about!



BUSINESS

new

“Leaders aren’t born, they are made. They are made just like everything else, through hard work.” – Vincent Lombardi

This course is taught through six modules, the first of which covers the core knowledge and skills needed to understand the concepts and developments that form the latter parts of the course.

- Module 1 – Development of practical skills
- Module 2 – Foundations in Biology. Looking at cell structure, biological molecules, cell division and cellular organisation.
- Module 3 – Exchange and transport. Looking at exchange surfaces and transport in plants and animals.

During the second year you will study in depth some of the key processes in the functioning of organisms, how organisms relate to each other and the technologies at the forefront of Biomedical research.

- Module 4 – Biodiversity, Evolution and Disease.
- Module 5 – Communications, Homeostasis and Energy
- Module 6 – Genetics, Evolution and Ecosystems

Assessment

- Paper 1 – Short answer questions including multiple choice and structured questions which will mainly test knowledge of scientific ideas, techniques and procedures.

- Paper 2 – Longer answer questions which will test how you apply your knowledge in both familiar and unfamiliar contexts.

- Paper 3 – Longer answers which will test application of knowledge and also the ability to process data and evaluate experimental procedures.

Practical endorsement

Candidates complete a minimum of 12 practical activities to show practical competence. Graded as Pass or Fail, this is reported separately to the A level.

This course will enable you to study such relevant topics as digital technology, social media, globalisation and ethics as they relate to Business.

By taking a holistic approach to the subject, this course demonstrates the inter-related nature of Business using business models, theories and techniques to support analysis of contemporary Business issues and situations.

As an A-level Business student you will be assessed on your ability to:

- Demonstrate knowledge and application of core Business theories and terminology to various Business contexts.

- Analyse evidence in order to show understanding of how individuals and organisations respond to real-world developments.

- Evaluate quantitative and qualitative information to make informed judgments and propose evidence-based solutions to business issues

Assessment

The course is assessed via three examinations, each carrying an equal weight of a third of the final grade.

- Business 1. A two-hour written examination featuring multiple choice, short answer and essay responses.
- Business 2. A two-hour written examination featuring 3 data response multi-part questions.

- Business 3. A two-hour written examination featuring one case study followed by 6 questions.

Real life case studies will be used wherever possible to make it easier for students to relate to and apply their knowledge and skills developed throughout the course.



Entry requirements: GCSE Grade B in Core Science and Additional Science or Biology and Mathematics.



Course contact: Jacqui Gaiser-Porter
www.netherhallsf.com



Entry requirements: 7 GCSEs at Grade C including Mathematics and English.



Course contact: Luke Driscoll
www.netherhallsf.com

CHEMISTRY

new

The modern world uses many new and exciting forms of matter: non-stick surfaces, bullet-proof vests, tailor-made medicines and biodegradable polymers – Chemistry is at the heart of all of them.



Salters Chemistry builds on your experience of chemistry at GCSE. It is a very practical course and looks at a range of issues including fuels, atmosphere, metals, polymers, oceans, colour and biochemical sciences.

The course is context-led conveying the excitement of contemporary chemistry. Ideas are introduced in a spiral way with topics introduced in an early part of the course reinforced and extended later. There is a particular emphasis on an investigational and problem solving approach to practical work.

Y12 units:

- Elements of life
- Developing fuels
- Elements from the sea
- The ozone story
- What's in a medicine?

Y13 units:

- The chemical industry
- Polymers and life
- Oceans
- Developing metals
- Colour by design

Practical work is carried out throughout the course and specific skills assessed for the Practical Endorsement. Other practical skills are assessed in the written papers.

Assessment

Three exams at the end of Year 13.

- Fundamentals of chemistry (Multiple choice and structured questions)
- Chemical literacy (Structured questions and extended response questions)
- Practical Analysis Skills (Questions related to theory and experimental design, analysis and interpretation of data)

Practical endorsement

Your practical skills are assessed throughout the course and awarded separately from the theory papers. There is no longer an Individual Investigation (coursework) component.

CORE MATHS

new

This new Core Maths qualification is designed for students who achieve a Grade C or above in their GCSE Maths but do not want to continue with a more advanced level of Maths after the age of 16.

This course will run as an additional (fourth) A-level. It places emphasis on mathematical and statistical problem solving and is intended for:

- Students taking A-level courses for whom A-level Maths is not appropriate;
- Students who need support with Maths for A-level studies: for example, in Business, Chemistry, Economics, Geography, IT, Psychology, Sociology or Health and Social Care
- Students who need to continue with some form of Maths because they intend to enter a teacher training or health care professional course.

The course will focus on problem solving skills and strategies, application of mathematical and statistical thinking and reasoning to solve real life problems, competency in interpreting and explaining solutions of problems in context.

Assessment

Methods of assessment have not yet been confirmed by the Exam Board. There is a possibility of controlled coursework assessment and/or multiple examinations. The College is currently considering whether this will run as a one year course in Year 12 only.

Entry requirements: GCSE Grade B in Core Science, Additional Science (or Chemistry) and Mathematics.

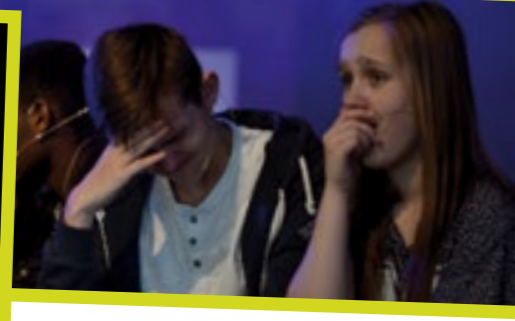
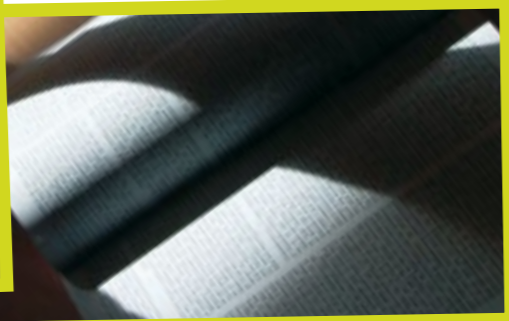
Course contact: Gill Kuzniar
www.netherhallsf.com

Entry requirements: 7 GCSEs at Grade C including Mathematics and English.

Course contact: Christopher Woods
www.netherhallsf.com

CREATIVE WRITING

Our Creative Writing group will provide you with a supportive community in which to experiment with different styles of writing, hone your written expression and let your imagination run free.



AS Creative Writing

You will learn how to use professional briefs to tailor your writing to very specific purposes, audiences and forms such as blog entries, reviews of events and newspaper columns. You will also produce two pieces of written coursework focusing on prose fiction, prose non-fiction, poetry or drama.

A2 Creative Writing

You will use published texts as stimuli for producing your own creative work, demonstrating your ability to analyse aspects of other writers' craft and applying this to your own writing. You will also produce one substantial piece of written coursework with an accompanying commentary.

AS Assessment

- 40% examination, 60% coursework
- Writing on Demand
- Exploring Creative Writing

A2 Assessment

- 40% examination, 60% coursework
- From Reading to Writing
- The Writing Portfolio

DRAMA

Actor, Designer, Playwright, Critic, Director. If any of these roles describe you, then this course is that first step into the creative and expressive world of Drama and Theatre.

AS Drama & Theatre Studies

In your AS you will perform and explore three plays, one of which will be to an audience and the examiner. You will experience a great deal of theatre.

A2 Drama & Theatre Studies

In your A2 you will further your skills, knowledge and understanding by devising, directing, researching and interpreting theatre.

AS Assessment

- 60% practical examination, 40% coursework
- Exploration of two set plays and evaluation of live theatre performance
- Performance: A monologue or duologue and contribution to a performance

A2 Assessment

- 60% examination, 40% coursework
- Performance of devised work
- Examination.



Entry requirements: GCSE Grade B in both English Language and English Literature.



Course contact: Alison Binney
www.netherhallsf.com



Entry requirements: 7 GCSEs at Grade C including Mathematics and English.

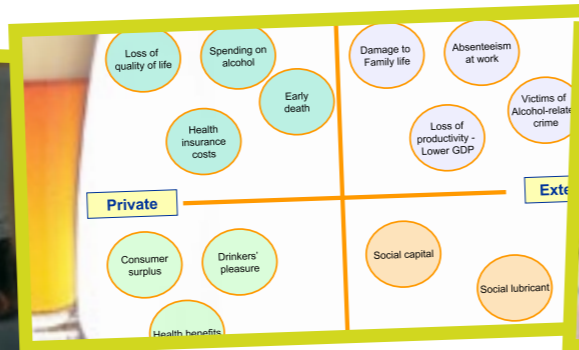
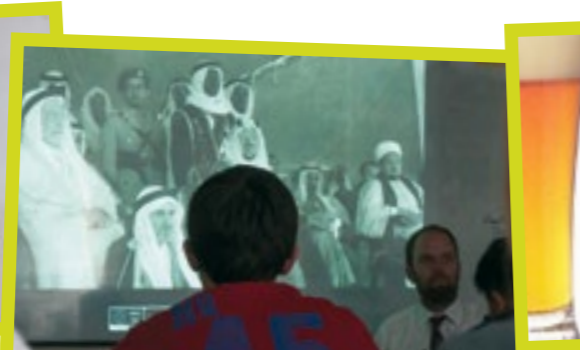


Course contact: Lee Parry
www.netherhallsf.com

ECONOMICS

new

“Economics is the science that studies how people and societies make decisions that allow them to get the most out of their limited resources” – Sean Massaki Flynn



A-level Economics will enable you to understand and navigate the complex and intriguing economic systems that impact all of our lives.

The subject is divided between micro and macro-economics:

- Micro-economics considers specific industries, firms and individual economic decision making. Also considered is poverty, wealth distribution and the labour market.
- Macro-economics considers national and international economics. For instance, financial markets, monetary, fiscal and supply-side policies are key topic areas.

You will be assessed on:

- Demonstrating and applying academic knowledge to real world contexts.
- Showing an empathetic understanding of how economic agents respond to economic issues.
- Using the full range of quantitative, qualitative and modelling techniques in order to make and justify your judgements relative to economic issues.

Real life case studies will be used wherever possible to make it easier for students to relate to and apply their knowledge and skills developed throughout the course.

Assessment

- Three examinations, each counting as a third of the final grade.
- Paper 1 – Markets and Market Failure. A 2 hour written examination requiring data and essay responses.
 - Paper 2 – The National and International Economy. A 2 hour written examination requiring data and essay responses.
 - Paper 3 –Economic principles and issues. A written examination requiring multiple-choice responses and a case study requiring essay responses.

ENGLISH LANGUAGE & LITERATURE

new

Explore the relationship between language and literature, develop your reading skills and learn how to write for a range of audiences and purposes. Your opinions and responses will be highly valued.

This course gives you the opportunity to develop as a reflective reader and writer, exploring the relationship between language and literature and developing writing for a range of purposes and audiences.

You will study a range of literary and non-literary texts written in a range of contexts. Examples of set texts include: Jane Eyre, Atonement, Antony and Cleopatra, Cat on a Hot Tin Roof and In Cold Blood.

You will also have the opportunity to focus in detail on a genre such as journalism, travel writing or science fiction, and to produce some creative writing in this genre.

Most lessons will involve group discussion within a small, supportive environment, allowing you to try out new ideas and learn from your peers.

You will be expected to read widely around the set texts and to carry out some research into the texts' literary and historical context.

Assessment

80% examination; 20% coursework

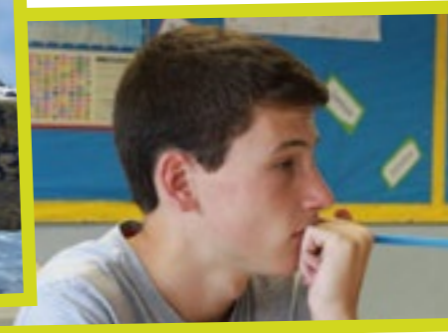
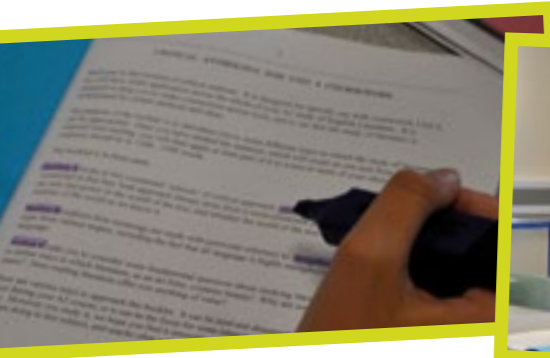
The coursework element of this qualification entails writing a 1500-word study of a particular genre and producing two pieces of creative writing.

You will also sit three examinations, one on each of the other three components of this course.

ENGLISH LITERATURE

new

If you like reading widely and enjoy exploring literature, this course will give you the opportunity to study and consider a range of literary texts, develop your ideas and broaden your critical skills.



On this course you will study a wide range of poetry, prose and drama. Within each genre, you will explore some modern texts from the 20th and 21st centuries, alongside some much older texts. Examples of set texts include: poems by Geoffrey Chaucer, John Keats, Sylvia Plath and Gillian Clarke; plays such as King Lear, A Streetcar Named Desire and Top Girls and novels from writers such as Ian McEwan, Margaret Atwood and Mary Shelley.

Most lessons will involve group discussion within a small, supportive environment, allowing you to try out new ideas and learn from your peers.

You will be expected to read widely around the set texts and to carry out some research into the texts' literary and historical context.

Assessment

80% examination; 20% coursework

The coursework element of this qualification entails writing a 2500-3500 word assignment on a pair of prose texts.

You will also sit three examinations, one on each of the other three components of this course.

GEOGRAPHY

Geography helps us understand how people and societies relate to changes in the natural environment. You will learn how to evaluate attitudes to geographical and environmental issues and take part in a range of stimulating field trips and learning activities.

AS Geography

You will study elements of both physical and human Geography, with a variety of fieldwork and research opportunities.

- Unit 1: Global Challenges. Looking at the meaning, causes, impacts and management of global issues, including challenges from hazards, global warming, globalization and population migration.
- Unit 2: Geographical Investigations. Extreme weather, crowded coasts, unequal places and re-branding places – all involve interesting fieldwork opportunities. Last year a four-day field trip to Wales was carried out.

A2 Geography

Both physical and human aspects of Geography are continued.

- Unit 3: Contested planet. Six topics looking at the use and management of resources – a key issue in today's world.
- Unit 4: Geographical research on a selected topic. Last year the focus was on issues around food security.

AS Assessment

- 100% examination, Unit 2 involves fieldwork questions
- Unit 1: 60% of AS
- Unit 2: 40% of AS.

A2 Assessment

- 100% examination
- Unit 3: 60% of A2
- Unit 4: 40% of A2.

GOVERNMENT & POLITICS

"I have come to the conclusion that politics is too serious a matter to be left to the politicians."
Charles de Gaulle



HEALTH & SOCIAL CARE

Covering health care, social care and early years provision, this course will broaden your interest in how these areas affect and influence the lives of everyday people.

AS Government and Politics

You will consider what politics is, how we can participate in politics, the role of the media and the way the British political system works.

- Unit 1: People and Politics. Democracy and political participation, party policies and ideas, elections, pressure groups.
- Unit 2: Governing the UK. The constitution, Parliament, The Prime Minister and cabinet, judges and civil liberties.

A2 Government and Politics

Building on your AS studies, you will study the American political system – including looking at the Presidency, Congress and the Supreme Court, as well as the relationship between the Federal Government in Washington and individual states.

- Unit 3: Key themes in political analysis Topic C: Representative processes in the USA. Elections and voting, political parties, pressure groups, racial and ethnic politics.
- Unit 4: Extended themes in political analysis Topic C: Governing the USA. The Constitution, Congress, Presidency, Supreme Court.

AS Assessment

- 100% examination; two 80-minute papers
- Unit 1: 50% of AS, 25% of total GCE available January and June
- Unit 2: 50% of AS, 25% of total GCE available January and June.

A2 Assessment

- 100% examination; two 90-minute papers
- Unit 3: 50% of A2, 25% of total GCE available in June
- Unit 4: 50% of A2, 25% of total GCE available in June.

AS Health and Social Care

In your AS you will complete three units of work:

- Promoting Quality Care (Examination)
- Communication in Care Settings (Portfolio)
- Promoting Good Health (Portfolio).

A2 Health and Social Care

In your A2 you will complete three units of work, one of which is compulsory:

- Care Practice and Provision (Portfolio, Compulsory)

And a choice of two units from the following:

- Understanding Human Behaviour (Examination)
- Anatomy and Physiology (Examination)
- Social Trends (Examination)
- Child Development (Portfolio)
- Mental Health issues (Portfolio).

AS/A2 Assessment

Assessment involves both examination and portfolio assignments. Both courses consist of one examined unit and two portfolio units. The choices of optional units at A2 must reflect this.



Entry requirements: 7 GCSEs at Grade C including Mathematics and English.



Course contact: Tom Watkins
www.netherhallsf.com



Entry requirements: 7 GCSEs at Grade C including Mathematics and English.

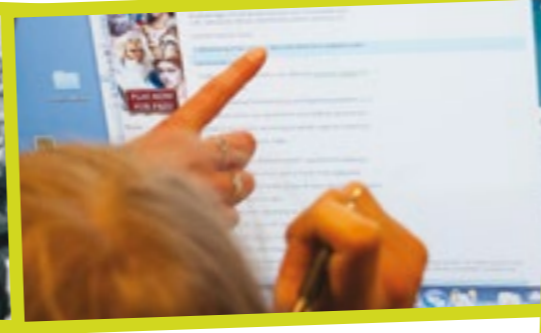


Course contact: Janet Underwood
www.netherhallsf.com

HISTORY

new

History remains both a popular and important subject, an indispensable guide to how the modern world has come to be as it is.



On this course you will study England under the Tudors 1485- 1603. This breadth study allows you to see the changes that happened over a long period of time. It focuses on how Tudor monarchs established and consolidated their power; the religious changes of the period; and the danger posed by revolts and opposition from abroad.

You will also study Russia in the first half of the twentieth century. This depth study focuses on Russia after the fall of the Tsar and looks at the October Revolution and the establishment of Communist rule, Stalin's rise to power and his rule of Russia until 1953.

The coursework element allows you to study a period of history not covered in class or to deepen your understanding of part of the course you are particularly interested in.

The Breadth Study – Tudor England 1485-1603. Using a chronological approach, you will study the main events of these years to ensure you develop a good understanding of the period.

The Depth Study – Russia 1917-1953. You will look in depth at this short period of major change.

The Historical Investigation – A piece of individual research that will begin in the summer term of Year 12.

Students work independently on this and can base their study on a topic of their own choice although the question must be approved.

Assessment:

Paper 1 Breadth Study - 40%
2 hours 30mins – 80 marks in total.

Paper 2 Depth Study – 40%
2 hours 30mins – 80 marks in total.

Non-Exam Unit – 20%
Personal study based on a topic of the student's own choice. (The question must be approved by the exam board).

ICT

Welcome to ICT. It's a gigantic global industry that's keeping people in touch wherever they are. It engages the logical and creative parts of your personality.

AS ICT

- Unit 1 – INFO1 Practical Problem Solving in the Digital World. This unit will provide you with the opportunity to develop your knowledge and understanding of the development of ICT systems through practical experience, in using a range of applications software in a structured way.
- Unit 2 – INFO2 Living in the Digital World. You are living in a world where the use of ICT surrounds you, and where you, and others, frequently take this use for granted.

A2 ICT

- Unit 3 – INFO3 The Use of ICT in the Digital World. You will look at the fast changing subject of ICT, including developments in technology and ICT system capabilities, and how this might affect the world that makes use of ICT.
- Unit 4 – INFO4 Coursework: Practical Issues Involved in the Use of ICT in the Digital World. This unit provides you with the opportunity to complete a substantial project involving the production of an ICT-related system over an extended period of time.

- 100 % Coursework project report. Students may, for example, produce:
- A software solution such as an e-commerce or multimedia system.
 - A training system, including training materials for a client. This could, for example, be for a course for someone working from home.
 - A backup and recovery system and a disaster recovery plan for an organization.



Entry requirements: 7 GCSEs at Grade C including Mathematics and English.



Course contact: Clare Dunkerley
www.netherhallsf.com



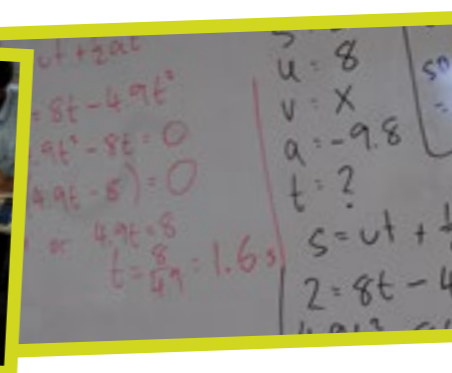
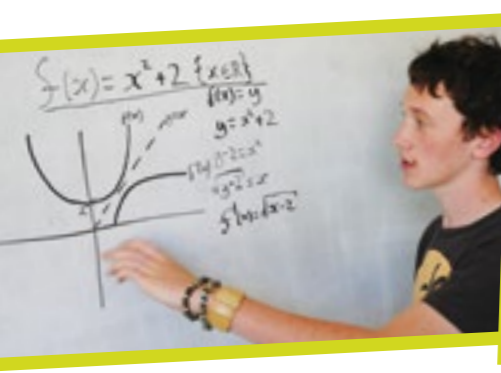
Entry requirements: 7 GCSEs at Grade C including Mathematics and English.



Course contact: Luke Driscoll
www.netherhallsf.com

MATHS

In the world of work, the importance of maths is unquestionable. For example, it is the key to science and engineering; it is indispensable in commerce.



A-level maths aims to improve your knowledge and understanding of maths and its uses in the real world. Through the course, you will develop your skills to reason logically, comprehend mathematical arguments and recognise how different situations can be represented mathematically.

AS Mathematics

- The Core 1 module aims to extend basic skills in algebraic manipulation, sketching curves and introduces series, differentiation and integration.
- The Core 2 module looks extensively at trigonometry and continues to develop topics on differentiation and integration.
- The Statistics 1 module develops concepts learned at GCSE, investigating new ways that data can be manipulated, displayed and interpreted.

A2 Mathematics

- The Core 3 module looks into higher-level functions, trigonometry and differentiation.
- The Core 4 module investigates the use of vectors and more calculus.
- The Mechanics 1 module covers new topics of kinematics, statics and moments.

Studying Further Mathematics will provide a stimulating experience and develop areas of the brain untouched by other subjects. It will also mean that you probably end up earning more than the rest of us!

AS Further Mathematics

- Decision Mathematics 1
- Further Pure Mathematics 1
- Statistics 2

A2 Mathematics

- Further Pure Mathematics 2 or 3
- Decision Mathematics 2
- Mechanics 2
- (Modules are subject to change)

A2/AS Assessment

All modules are 100% examination.



Entry requirements: at least 7 GCSEs including Mathematics at Grade A.



Course contact: Janay Fehr
www.netherhallsf.com



Entry requirements: at least 7 GCSEs including Mathematics at Grade A.



Course contact: Janay Fehr
www.netherhallsf.com

MEDIA STUDIES

This subject will enable you to explore and analyse the wide range of media we are exposed to today, and examine the concerns and interests of citizens in contemporary society.



AS Media Studies

In your AS you will develop the technical skills to produce your own opening sequence of film. You will study the moving image, and other forms of media, to demonstrate your understanding of media concepts.

A2 Media Studies

In your A2 you will develop your interests and competencies further, producing your own music video, and study the role of the media in today's society.

AS Assessment

Examination 50%, coursework 50%
Foundation portfolio comprising a short film and the opening sequence of a movie.
Key Media Concepts – media ownership, technology and consumption.

A2 Assessment

Examination 50%, coursework 50%
Advanced portfolio including a music video, a digipak and an advertisement.
Critical Perspectives in Media – a study of media in society.

PE

The business of sport is a major part of our modern lives: we all play, watch or talk about sport. How has it come to be our obsession?

AS Physical Education

- Unit 1: Learn about the physiological effects of adopting a healthy lifestyle; the short and long term effects of training; the analysis of movement through practical examples; how we learn practical skills and how psychological factors affect performance.
- Unit 2: Practise and perform a range of core skills and techniques in two roles in your chosen activity.

A2 Physical Education

- Unit 3: Energy sources and systems; psychological theories and techniques to optimise performance; preparation and training of elite athletes; World Games and their impact; history and development of recreation and sport; the development and impact of sports technology.
- Unit 4: Demonstrate skills and techniques in competitive or performance conditions in your chosen activity. Analyse and evaluate performance; identifying weaknesses, suggesting causes and effects and appropriate corrective measures.

AS Assessment

- 60% Examination. 2-hour exam at end of Year 12.
- 40% practical coursework, assessed in one or two activity areas, in one or more roles. For example, as a performer AND coach in football, or as a performer in netball AND swimming.

A2 Assessment

- 60% Examination. 2-hour exam at end of Year 13.
- 40% practical and written coursework, assessed for a single activity and role of your choice, for which you will write a personal performance analysis.

PHILOSOPHY & ETHICS

This course will involve you in the study of philosophical and ethical issues and reflection on religious perspectives.



AS Philosophy and Ethics

- Philosophy
Topics studied include What is God like, and arguments for and against the existence of God.
- Ethics
Topics studied include Ethical theory, Medical ethics and War and Peace.

A2 Philosophy and Ethics

- Philosophy
Topics studied include Religious language, the nature of God, and Religious experience.
- Ethics
Topics studied include Meta ethics, Sexual ethics, Free will and determinism, and the conscience.

AS Assessment

100% examination. Two papers.

A2 Assessment

Examined in two examination papers which includes the synoptic assessment.

PHOTOGRAPHY

"When words become unclear, I shall focus with photographs"
Ansel Adams



In your first year of study you will be actively engaged in developing your photographic skills in a variety of processes, such as critical analysis, animation, digital imagery, image manipulation, darkroom practices, studio lighting and exhibiting.

You will consider and analyse photography in its historical and contemporary context, reviewing the work of photographers and photographic processes.

We have equipment and facilities for you on site, including sophisticated industry-standard software, darkroom processes, digital and analogue SLRs and technical studio lighting.

During the second year you will expand on theory and practice developed so far, exploring and refining techniques further to meet the needs of your ideas.

Ultimately, you will build an effective and balanced portfolio of work that demonstrates technical skills, theory based knowledge and critical analysis. This portfolio may be used for interview at higher educational level, for securing external exhibitions or for entering industry at apprenticeship or employment level.

Assessment:

Personal investigation worth 60% (inclusive of an extended contextual research essay).

Externally set exam worth 40% (inclusive of a 15 hours examination and preparatory studies).

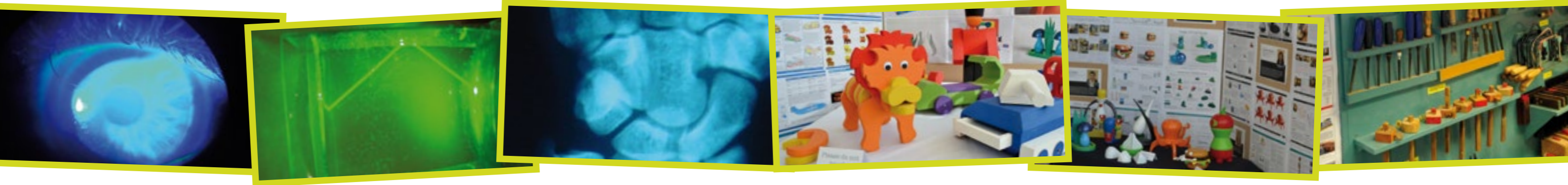
PHYSICS

new

Physics tells us stories about how the world works and leads to exciting technologies that can improve our lives.

PRODUCT DESIGN

We live in a world of consumer goods, products and images that affect our lives by influencing our decision-making process.



This course follows a context-based approach where you will learn the key concepts and skills of physics and how these are applied to solve real problems. It demonstrates the usefulness of physics and illustrates the impact that discoveries in physics have had on the way we live.

Throughout the course, you will develop your practical skills and you will learn new techniques to analyse data.

This course is taught through six modules:

- Module 1 – Development of practical skills
- Module 2 – Fundamental data analysis
Fundamental, experimental and analytical skills.

- Module 3 – Physics in action
Imaging and signalling, Sensing, Mechanical properties of materials.
- Module 4 – Understanding processes
Waves and quantum behaviour, Space, time and motion.
- Module 5 – Rise and fall of the clockwork universe
Creating models, Out into space, Our place in the universe, Matter: very simple, Matter: hot or cold.
- Module 6 – Field and particle physics
Electromagnetism, Charge and field, Probing deep into matter, Ionising radiation and risk

Assessment

- Paper 1 – Fundamentals of Advancing Physics. 2hrs 15 mins, 41% weighting
- Paper 2 – Scientific Literacy in Advancing Physics. 2hrs 15 mins, 37% weighting
- Paper 3 – Practical Skills in Advancing Physics. 1hr 30 mins, 22% weighting

Practical Endorsement

Candidates complete a minimum of 12 practical activities to show practical competence. Graded as Pass or Fail, this is reported separately to the A level.

AS Product Design

- Module 1 – Student Portfolio
In your AS you will produce a portfolio with three distinct sections, demonstrating your creativity and flair when investigating, designing and making products.
- Module 2 – Product Design in Practice
In this module you will develop a knowledge and understanding of a wide range of materials and processes used in design and production technology.

A2 Product Design

- Module 3 – Designing for the Future
The modern designer must have a good working knowledge of the use of ICT and systems and control technology in the design and manufacture of products. You will study a range of modern design and manufacturing practices and contemporary design issues.
- Module 4 – Commercial Design
You will be given the opportunity to apply the skills acquired and developed throughout the course to design and make a product of your choice. This will demonstrate an understanding of either 'conceptual design', product design or 'the built environment'.

AS Assessment

Student portfolio and examination
One portfolio with three distinct sections
1½-hour examination

A2 Assessment

Examination and student project
2-hour examination
Commercial design project.



Entry requirements: GCSE Grade B in Core Science, Additional Science (or Physics) and Mathematics.



Course contact: Ally Davies
www.netherhallsf.com



Entry requirements: 7 GCSEs at Grade C including Mathematics and English.

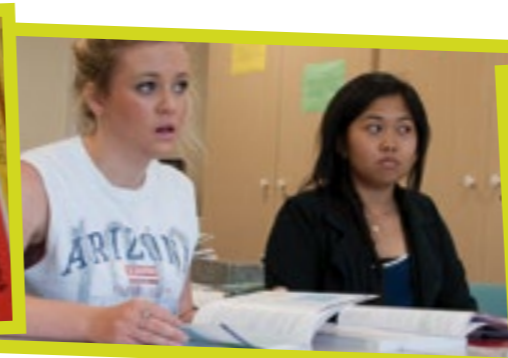
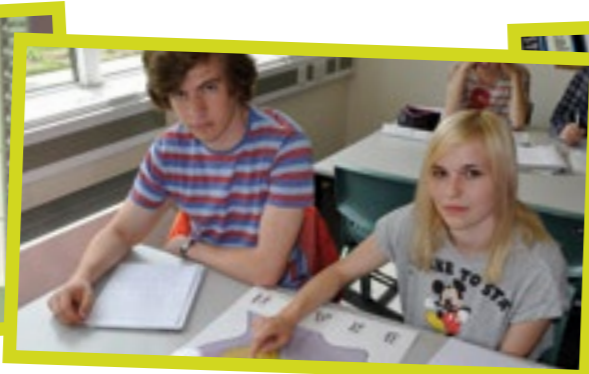


Course contact: Janet Underwood
www.netherhallsf.com

PSYCHOLOGY

new

Psychology is one of the fastest-growing university subjects and is becoming increasingly available in schools and colleges. Psychology touches virtually every aspect of life.



On this course you will study different approaches and methods related to the core areas of Psychology – cognitive, social, biological and developmental.

The introductory topics in the compulsory unit of Psychology include:

- Social Influence
- Memory
- Attachment
- Psychopathology
- Approaches in Psychology
- Biopsychology
- Research Methods
- Issues and debates in Psychology

Students will study one topic from each of the following three groups:

- Option 1
 - Relationships
 - Gender
 - Cognition and Development
- Option 2
 - Schizophrenia
 - Eating behaviour
 - Stress
- Option 3
 - Aggression
 - Forensic psychology
 - Addiction

Assessment

Three 2 hour written exams with a mixture of multiple choice, short answers and extended writing.

- Paper 1 – Compulsory units 1-4 (33%)
- Paper 2 – Compulsory units 5-7 (33%)
- Paper 3 – Compulsory unit 8 and three optional units (33%)

At least 10% of the assessment marks for Psychology will require the use of mathematical skills. For example, applying statistical tests to data sets such as calculating a non-parametric test of differences using data from a given experiment. These skills will be applied in the context of Psychology A-level and will be at least the standard of higher tier GCSE mathematics.

Entry requirements: 7 GCSEs at Grade C and Mathematics at Grade B.

Course contact: Mo Middleton
www.netherhallsf.com

SOCIOLOGY

new

Sociology questions ‘common-sense’ notions of what happens in society. Learn how to argue and debate in verbal and written form, and to think critically about contemporary issues.

Sociology fosters the development of critical thinking, a respect for social diversity and encourages an awareness of the importance of social structure and social action in explaining social issues.

On this course you will develop skills to help you understand and analyse topical issues such as crime and deviance and institutions and organisations such as government and religious groups.

You will follow a broad course of study designed to reflect on your own experiences and enhance your ability to play informed roles within different social contexts. It will prepare you for making informed decisions about further learning opportunities and career choices.

Course content includes:

- Introducing socialisation, culture and identity
- Themes developed through the context of one of three options:
 - Families and relationships
 - Youth Subcultures
 - Media
- Research methods and researching social inequalities
- Understanding social inequalities
- Globalisation and the digital social world
- Debates explored through a detailed study of one of three options:
 - Crime and deviance
 - Education
 - Religion, belief and faith

Assessment

- Socialisation, culture and identity
 - 1 hour 30 minutes written paper
 - 30% of total A-level
- Researching and understanding social inequalities
 - 2 hours 15 minutes
 - 35% of total A-level
- Debates in contemporary society
 - 2 hours 15 minutes
 - 35% of total A-level

Entry requirements: 7 GCSEs at Grade C including Mathematics and English.

Course contact: Mo Middleton
www.netherhallsf.com

A-LEVEL RESULTS 2014

Subject	Entries	No A* – B	No A* – C	No A* – E	% A* – B	% A* – C	% A* – E
Art	12	3	6	12	25.0	50.0	100.0
Biology	18	7	8	17	38.9	44.4	94.4
Biology (Human)	5	1	2	5	20.0	40.0	100.0
Business Studies	8	5	7	8	62.5	87.5	100.0
Chemistry	10	4	7	10	40.0	70.0	100.0
Design and Technology	1	0	0	1	0.0	0.0	100.0
Drama	3	2	3	3	66.7	100.0	100.0
Economics	3	1	1	3	33.3	33.3	100.0
English	15	6	11	15	40.0	73.3	100.0
English Literature	7	0	4	7	0.0	57.1	100.0
Film Studies	5	2	5	5	40.0	100.0	100.0
French	2	1	2	2	50.0	100.0	100.0
Geography	11	4	8	11	36.4	72.7	100.0
Health and Social Care	9	2	6	9	22.2	66.7	100.0
History	16	3	11	16	18.8	68.8	100.0
ICT	1	0	0	1	0.0	0.0	100.0
IT (Applied)	5	0	1	5	0.0	20.0	100.0
Mathematics	14	9	11	14	64.3	78.6	100.0
Mathematics (Further)	2	2	2	2	100.0	100.0	100.0
Media Studies	18	10	17	18	55.6	94.4	100.0
Photography	15	7	14	15	46.7	93.3	100.0
Physical Education	9	4	5	8	44.4	55.6	88.9
Physics	5	2	3	5	40.0	60.0	100.0
Psychology	13	5	10	13	38.5	76.9	100.0
Religious Education	6	5	6	6	83.3	100.0	100.0
Sociology	11	5	10	11	45.5	90.9	100.0
Travel and Tourism	9	3	7	9	33.3	77.8	100.0
Totals	240	99	174	238	41.3	72.5	99.2

Summary figures, year-by-year

Year	% A – B	% A – C	% A – E
2011	41.0	68.9	95.5
2012	38.1	69.0	98.1
2013	34.1	67.9	96.6
2014	41.3	72.5	99.2



CONTACT US

You can contact us by several methods:

Address

The Netherhall Sixth Form Centre
Queen Edith's Way
CAMBRIDGE
CB1 8NN

Telephone

01223 242931 ext. 216

Fax

01223 410473

Email

If you want to contact the Sixth Form Office with general enquiries please send an email to:
sixthformoffice@netherhall.cambs.sch.uk

Web

For more information about Netherhall Sixth Form and the courses we offer please visit www.netherhallsf.com



follow us on: NetherhallSF



Don't forget our Open Evening
on Thursday 6th November
from 6:00pm until 8:30pm.

(Remember to put this date in your diary).

Getting to Netherhall Sixth Form Centre

We are located on the South East side of Cambridge.

By bike

We have lots of sheltered bike racks on site.

By bus

The Citi 1 route stops right outside the entrance to the college. Buses operate every 10 minutes to and from town and the railway station.



Netherhall Sixth Form Centre

Queen Edith's Way, Cambridge CB1 8NN

Telephone (01223) 242931 ext. 216

Fax (01223) 410473

email sixthformoffice@netherhall.cambs.sch.uk

www.netherhallsf.com

