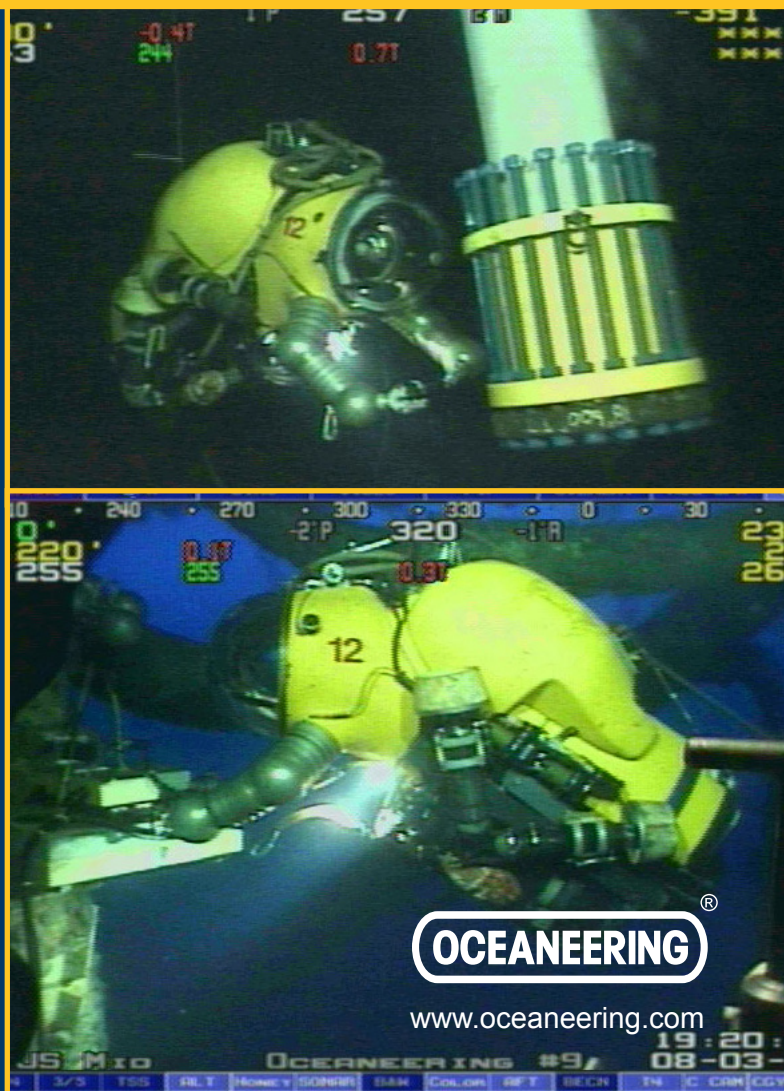


WASP



Oceaneering International, Inc. can perform underwater intervention tasks at any working depth. We offer surface supplied diving to 300 ft, saturation diving to 1,000 ft, WASP Atmospheric Diving Systems (ADS) to 2,300 ft, or Remotely Operated Vehicle (ROV) technologies to 25,000 ft. Experienced offshore personnel will first evaluate your workscope and then recommend the most effective solution for your application. When specified, the WASP ADS offers distinct advantages for intervention work, such as:

- **Presence** – WASP puts the creative problem-solving abilities of veteran divers directly at the subsea worksite.
- **Versatility** – A one-man submersible with unique intervention capabilities to 2,300 fsw
- **WASP Workscopes Include:**
 - Inspection, Maintenance & Repair (IMR) Tasks of Platforms, Subsea Facilities, & Pipelines
 - Riser & Pull Tube Installation
 - Subsea Tree Installations
 - Subsea Tree Intervention
- **Training** – Maintaining an onsite training pool realistically prepares operators for a variety of common underwater tasks.
- **Compact Size** – The WASP system is the smallest, high capacity intervention method available. The one atmosphere environment offers flexibility, efficiency, value and dexterity.



OCEANEERING®

www.oceaneering.com

WASP Specifications

Principle Dimensions

Overall Height:	84 in
Width – Front:	42 in
Width – Side:	32 in
Weight with Operator:(with in-water adjustment)	
In air	2,200 lb
In Water	Neutrally Buoyant
Deck Wasp Support Frame:	66 in X 70 in

Standard Weights and Dimensions

	<i>LxWxH</i>	<i>Weight</i>
Hiab Sea Crane	8 ft x 5 ft x 10 ft	9,000 lb
Electro/Hydraulic series 4 winch	10 ft x 8 ft x 8 ft	23,000 lb
WASP	7 ft x 8 ft x 8 ft	2,000 lb
Gas Quad O/2	10 ft x 8 ft x 8 ft	2,400 lb
Gas Quad Air	10 ft x 8 ft x 8 ft	2,400 lb
Control Van	16 ft x 8 ft x 8 ft	11,000 lb
Control Workshop	16 ft x 8 ft x 8 ft	15,000 lb
Spares Container	10 ft x 8 ft x 8 ft	2,400 lb

Life Support / Safety Systems

- Oxygen re-circulation with power scrubber, with manual back-up
- Life Support Duration: Up to 72 hours

Safety Emergency Equipment:

- Flashing Beacon
- Oral / Nasal mask for Life Support system in event of power failure
- Tracker / Locator Pinger
- Ballast Jettison for Emergency Ascent
- Emergency on board battery supply for 20 minutes at half power
- Lifting cable jettison facility

Hull

Hull Material:	Laminated glass reinforced plastic, (GPR) & aluminum
Hemispherical Dome:	360° view capability
Lloyd's Certified Depth Rating:	2,300 ft
Buoyancy:	Compressed air variable system from neutral to +35lb

Communications (Audio Systems)

- Wire line Through-Water
- VHF Radio Communications on surface

Limbs / Manipulators

- Aluminum construction fully articulated, fluid-supported flexible arms with direct acting manipulators.

Deployment Systems

- Umbilical comprises a 22 mm diameter cable having a breaking strength of 32,000 lb: fed from a single drum, two speed, fail-safe hydraulic winch; powered by a remote 75 hp electric-motor-driven hydraulic power pack
- Articulated Sea Crane

Power

- Umbilical supply is 415 V AC. This is converted & rectified at the ADS to:
 - 40 V, 60 V & 80 V for thrusters
 - 12 V, 24 V & 30 V for other services

Propulsion

- Four Electrical Thrusters:
- 2 Vertical
- 2 Horizontal
- Foot Switch Operated

Video Systems

- Monochrome or CCD Color Camera
- Compatible with Silicon Intensified Target (SIT) camera systems

