



Boyd Lake

FISH SURVEY AND MANAGEMENT DATA

Benjamin Swigle - Aquatic Biologist (Fort Collins/Boulder)
ben.swigle@state.co.us / 970-472-4364

General Information: Serving as a state park, Boyd Lake (1700 acres) provides quality fishing for walleye, white bass, catfish, and trout. Anglers may additionally catch smallmouth bass, crappie, bluegill, and perch. The lake is open year round to fishing. Park website: <http://cpw.state.co.us/placestogo/parks/BoydLake>
Location: Larimer County. At I-25 and US 34 (exit 257B) go W to Madison Ave. Go N 1 mile on Madison .
Recreational Management: Colorado State Parks
Purchase a Fishing License: <https://www.co.wildlifelicense.com/start.php>
Fishery Management: Warmwater angling, seasonal trout.

<u>Amenities</u>	<u>Previous Stocking</u>	<u>Sportfishing Notes</u>
<ul style="list-style-type: none"> • Boat Ramp • Swim Beach • Modern Restrooms • RV hook-ups • Tent Camping • Hiking Trails • Marina • Picnic Areas • Ice Fishing 	<p><u>2013</u></p> <ul style="list-style-type: none"> Black Crappie Bluegill Channel Catfish Largemouth Bass Rainbow Trout Walleye White Bass <p><u>2012</u></p> <ul style="list-style-type: none"> Black Crappie Channel Catfish Largemouth Bass Rainbow Trout Walleye <p><u>2011</u></p> <ul style="list-style-type: none"> Black Crappie Bluegill Channel Catfish Largemouth Bass Rainbow Trout Walleye White Bass 	<p><u>Walleye</u></p> <ul style="list-style-type: none"> • Fish any rock structure when water temps are 45-55°F. • Later, fish are scattered but tube jigs, lindy rigs, triple ripples, are good choices. <p><u>White Bass</u></p> <ul style="list-style-type: none"> • Follow the birds! The white bass will be chasing shad! • Use silver castmasters or another shad imitation. • Often attracted to flows when the reservoir is filling (especially at 40-52°F). <p><u>Smallmouth Bass</u></p> <ul style="list-style-type: none"> • Bass fishing can be frustrating given the limited amount of structure. Try rock rip-rap areas with crayfish imitations! <p><u>Channel Catfish</u></p> <ul style="list-style-type: none"> • Best baits are cut shad or chicken liver. Night fishing is best.



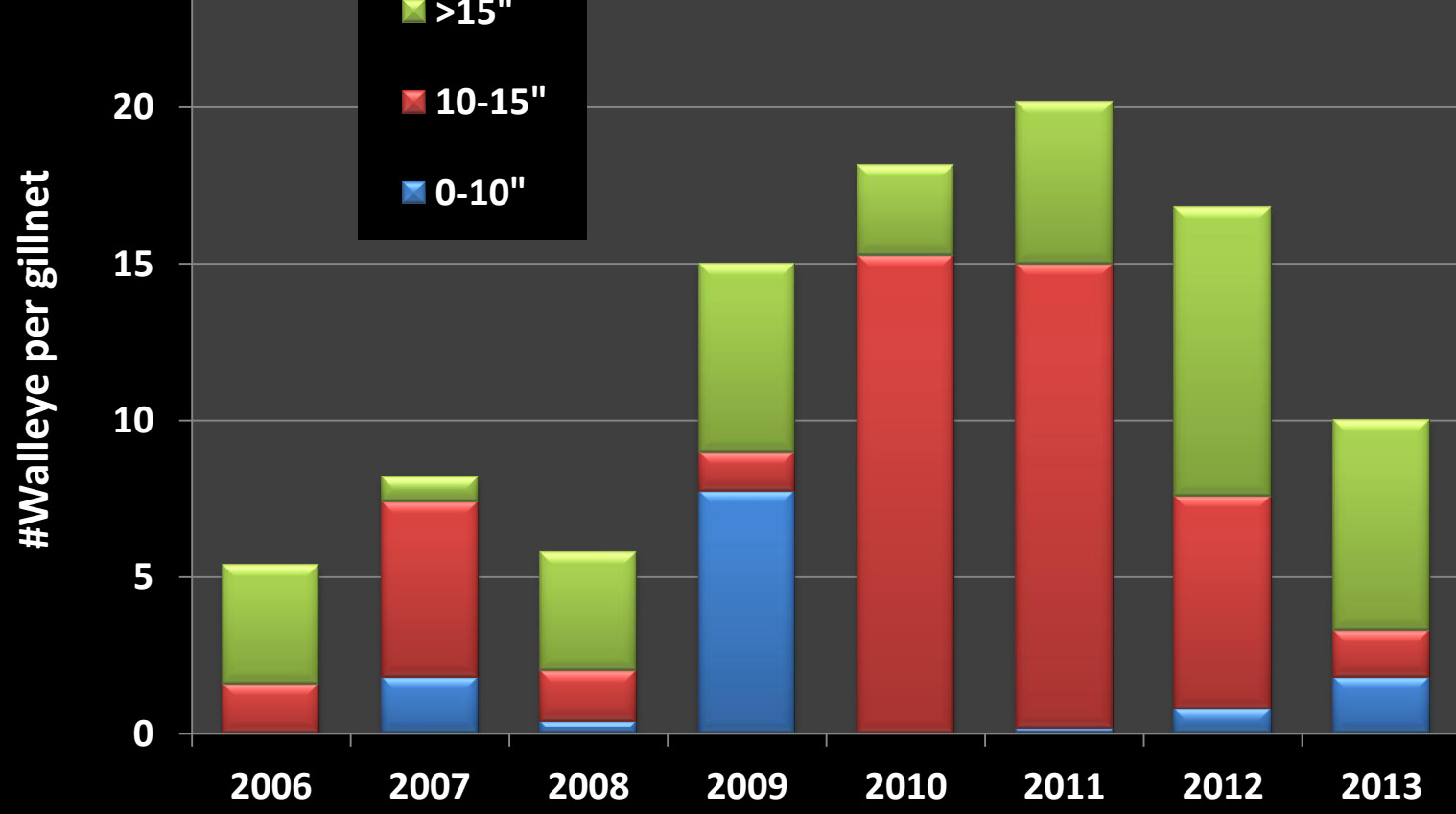
2013 FALL SURVEY (6 nets, 9/18/2013)

SPECIES	Total Sampled	Mean inches	Mean lbs	Minimum inches	Minimum lbs	Maximum inches	Maximum lbs
BLACK CRAPPIE	9	10.9	0.9	10.4	0.7	11.6	1.1
BLUEGILL	2	6.9	0.3	6.3	0.2	7.6	0.3
CHANNEL CATFISH	13	19.9	4.3	13.0	0.5	32.3	20.4
COMMON CARP	19	18.7	2.9	6.0	0.2	33.0	5.1
GIZZARD SHAD	14	16.6	1.9	13.6	0.9	18.7	2.4
LARGEMOUTH BASS	19	12.0	1.0	10.6	0.7	12.6	1.1
RAINBOW TROUT	10	13.3	0.8	12.1	0.6	14.2	1.0
SMALLMOUTH BASS	11	11.5	0.8	10.3	0.6	12.6	1.0
WIPER	8	10.7	1.0	4.7	0.0	20.1	4.6
WALLEYE	60	14.5	1.3	7.1	0.1	26.5	8.6
WHITE BASS	164	11.1	0.9	5.2	0.0	19.5	2.3
WHITE SUCKER	42	13.4	1.1	8.2	0.5	16.3	1.9

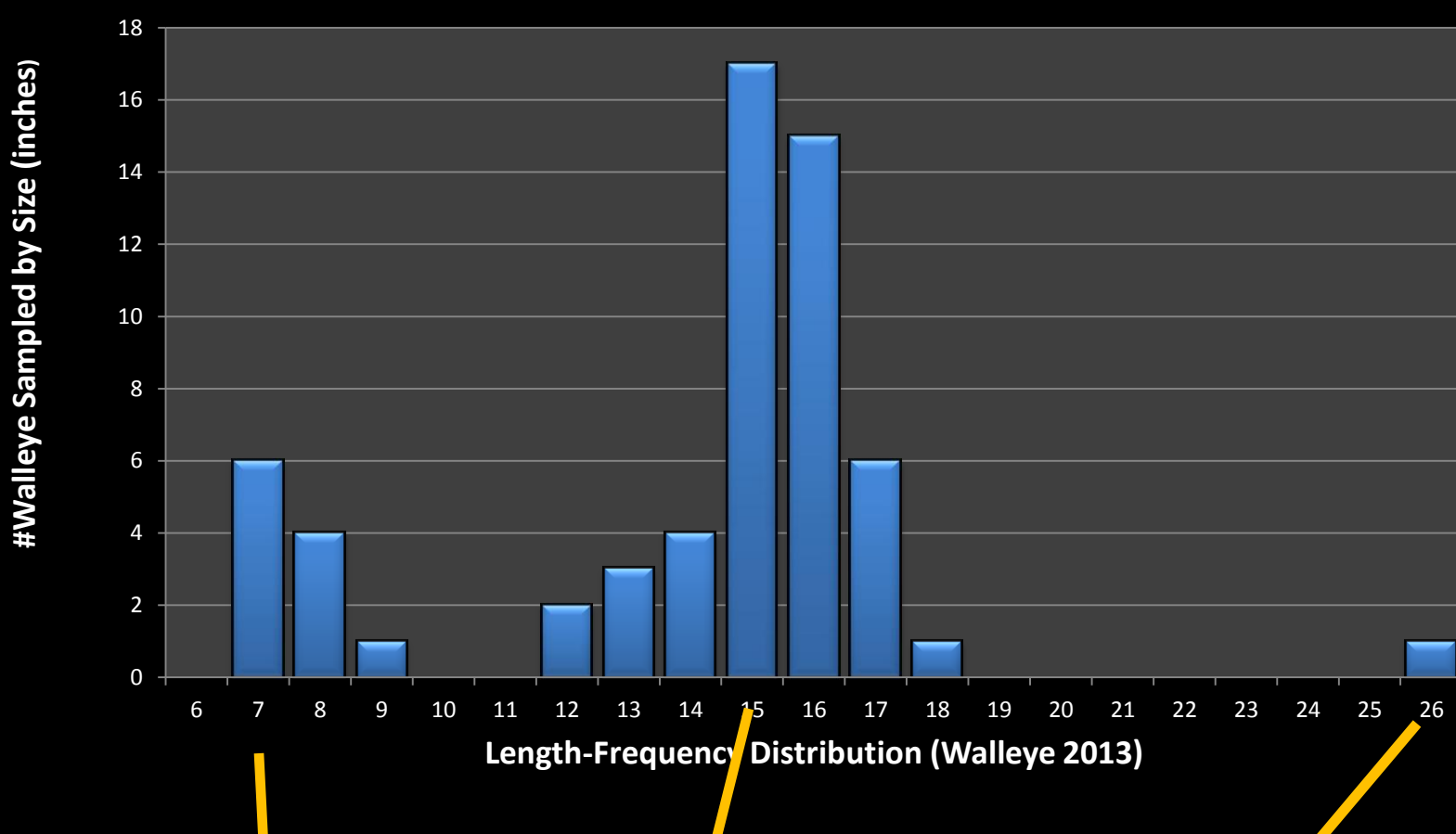
2014 Fishing Forecast

Walleye – The 2013 gillnet survey indicates walleye fishing at Boyd Lake should be fair to good in 2014. I have downgraded walleye fishing compared with success in 2012 because of a decline in overall abundance (see bar graph below).

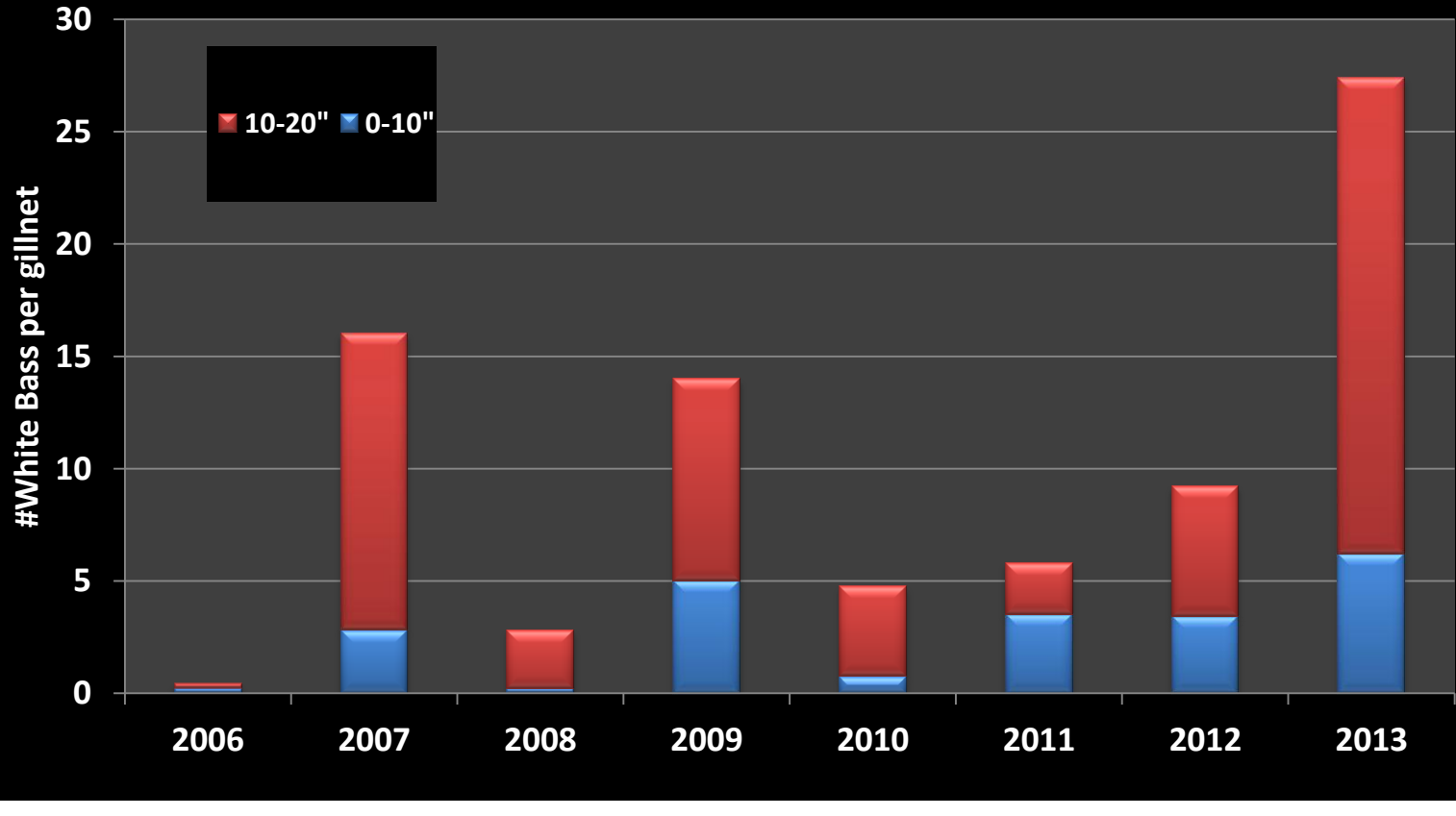
Depicted in the bar graph is the number of walleye sampled using gillnets with the number of walleye standardized per net by year. Walleye abundance has more than doubled since 2006, however abundance has declined over the past few years. This is likely a reflection of superior angler success and harvest in 2012 and recent drought conditions. Plenty of legal size fish remain as the majority of walleye caught exceeded 15 inches. The 2014 stocking request for this species was increased in an effort to return to 2011 levels of roughly 20 walleye per net.



Below – Graph illustrates the detailed length frequency distribution of the 60 walleye sampled during 2013. Six (6) gillnets were deployed and fished overnight. The 2013 survey documented 6-7 inch fish which were stocked during the spring of 2013. In general, walleye are not effectively surveyed until they reach 12 inches (2 year olds), but the fact that some young of year walleye are found is good news for future walleye fishing.



White Bass – The white bass story for Boyd Lake is a great example why annual sampling is important. The 2010 survey documented a decline in white bass abundance, most notably the younger fish. To compensate natural reproduction, 8,200 white bass fingerling (2.25”) were stocked in 2011 along with 7,700 additional fingerlings stocked in 2013. The result is a solid a good “uptick” in the number of young white bass (photo right, 2011). White bass number continue to climb and anglers should have great success in 2013. Boyd should be Colorado’s top destination in 2014 for this species.



Rainbow Trout – Thousands of 10-inch rainbow trout are stocked annually at Boyd. In general the number we sample is relatively low by design as trout are stocked in the spring or well after we complete the fall survey. In recent years ice fishing at Boyd has become extremely popular. During the fall of 2013 (after this survey) 20,000 rainbow trout @10.0” were stocked. Thus, Boyd Lake will again be a good ice fishing destination for a number of species this winter.

