



TOWER RIDES



With our high-capacity, high-visibility and small footprint tower rides, we literally took the amusement industry to new heights! Each tower ride rewards riders with breathtaking positive and negative G-force sensations. Economical and exciting, our tower rides continue to transform parks around the world.

The Space Shot is the ride that started it all for S&S. Renowned for its unique smoothness during a rapid 4-G vertical launch and then dropping into a breathtaking negative 1-G descent, the Space Shot is a pure rush.

The Turbo Drop begins with an impressive ride up the tower, and then, after a brief pause, blasts downward with a beyond-freefall negative G-force experience.

The Combo Tower combines the legendary Space Shot and Turbo Drop into one hair-raising amusement attraction.

GENERAL SPECIFICATIONS

- Height (tower only): 185' (56.3m)
- Height (with marquee): 200' to 215' (61m to 65.5m)
- Footprint (12-Seat): 7'6" x 7'6" (2.28m x 2.28m)
(16-Seat): 10' x 10' (3m x 3m)
- Safety Envelope (12-seat): 24' x 24' (7.3m x 7.3m)
(16-seat): 26' x 26' (8.1m x 8.1m)
- Number of Vehicles: 1
- People per Vehicle: 12 or 16
- Capacity: 360 to 480 people per hour
- Ride Time: 50 seconds
- Average Speed: 40 mph (64 kph)
- G-Force: +4G/-1G (ascent and descent)
- Minimum Passenger Height: 48" (1.22m)

POWER REQUIREMENTS

- U.S: 480V / 3 Phase / 60 Hz
- Intl: 380/400/415 V / 3 Phase / 50 Hz
- Power Consumption: 230 kw

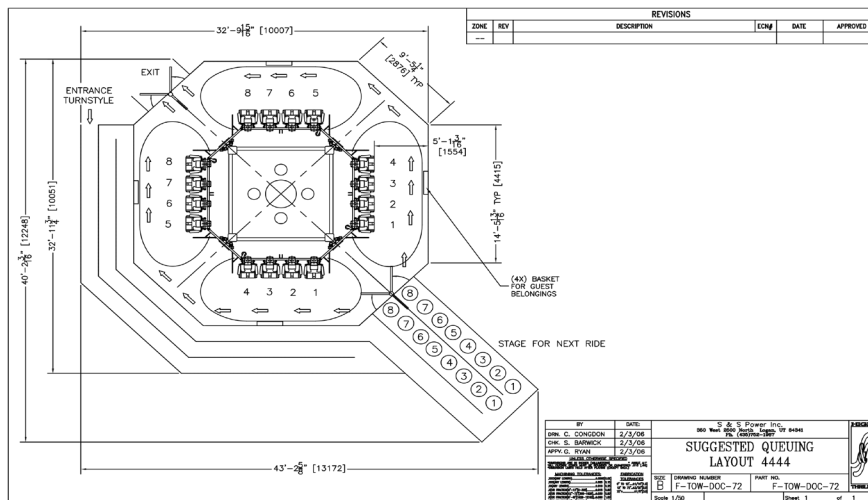
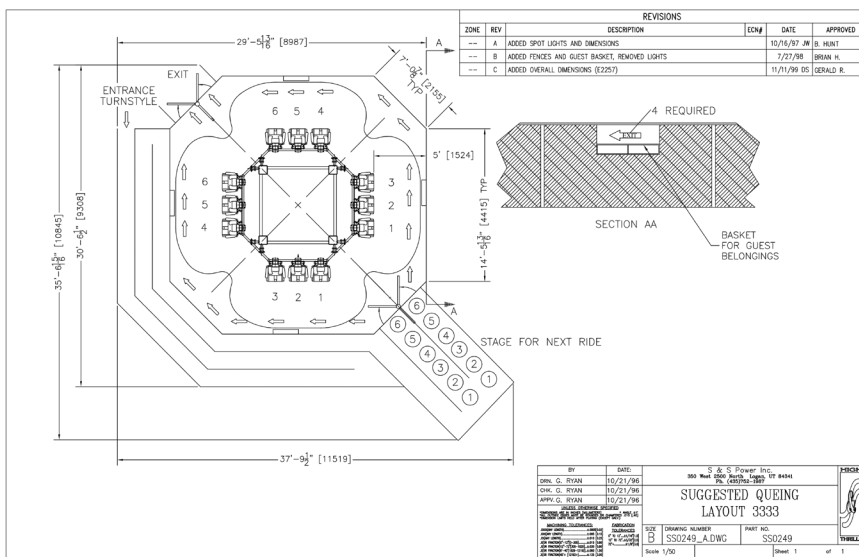
FEATURES

- High Visibility
- Low Operating & Maintenance Costs
- Small Footprint
- High Capacity Ride
- Allen-Bradley Control System
- Great Family Attraction

Ask about our NEW 20 seat towers!



TOWER RIDE FOOTPRINTS



S&S - SANSEI
TECHNOLOGIES INC