

# Summary of TC Jasmine and TC Cyril and flooding in the region

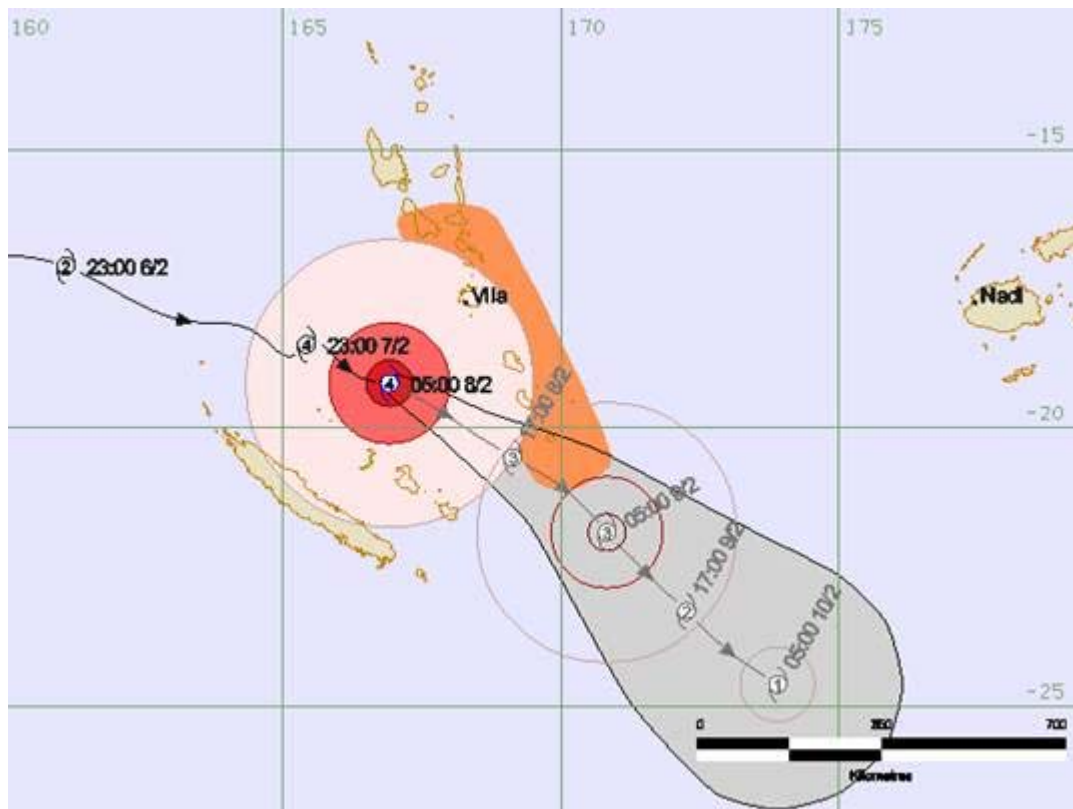
## Vanuatu (TC Jasmine Cat 4)

Tropical Cyclone Warning Centre Port Vila

### TROPICAL CYCLONE FORECAST TRACK MAP

#### Severe Tropical Cyclone Jasmine

Tropical Cyclone Forecast Track Map Number 16 issued at 5:58 am VUT Wednesday 8 February 2012



#### Remarks:

Destructive Hurricane force winds of 125 KM/HR, gusting to 185 KM/HR will affect Tafea Province in the next 12 to 24 hours.

Destructive Gale to Storm force winds of 90 KM/HR to 130 KM/HR will affect South of Malampa, Shefa and Tafea Provinces in the next 6 to 12 hours.

**Name:** Severe Tropical Cyclone Jasmine

#### Details:

	<b>Time (VUT)</b>	<b>Intensity Category</b>	<b>Latitude (decimal deg.)</b>	<b>Longitude (decimal deg.)</b>	<b>Estimated Position Accuracy (km)</b>
0hr	5 am February 8	4	19.2S	166.9E	20
+6hr	11 am February 8	4	19.9S	168.1E	45
+12hr	5 pm February 8	3	20.5S	169.1E	75
+18hr	11 pm February 8	3	21.2S	170.1E	100
+24hr	5 am February 9	3	21.9S	170.8E	130
+36hr	5 pm February 9	2	23.3S	172.3E	190
+48hr	5 am February 10	1	24.6S	173.9E	250

The next Forecast Track Map will be issued by 9:00 am VUT Wednesday

### **Fiji Met...**

HURRICANE WARNING 052 ISSUED FROM RSMC NADI Feb 07/1922 UTC 2012 UTC.

\*\*\*\*\*CORRECTION TO GALE AREA\*\*\*\*\*

SEVERE TROPICAL CYCLONE JASMINE CENTRE 948HPA CATEGORY 4 WAS LOCATED NEAR 19.3 SOUTH 167.1 EAST AT 071800 UTC.

POSITION GOOD.

REPEAT POSITION 19.3S 167.1E at 071800 UTC.

CYCLONE MOVING EAST SOUTHEAST AT 14 KNOTS.CYCLONE GRADUALLY WEAKENING IN THE NEXT 24 HOURS.

EXPECT SUSTAINED WINDS OF 90 KNOTS CLOSE TO THE CENTRE DECREASING TO 70 KNOTS BY

080600 UTC.

EXPECT WINDS OVER 63 KNOTS WITHIN 30 NAUTICAL MILES OF CENTRE.

EXPECT WINDS OVER 47 KNOTS WITHIN 50 NAUTICAL MILES OF CENTRE.

EXPECT WINDS OVER 33 KNOTS WITHIN 110 NAUTICAL MILES IN NE QUADRANT

AND WITHIN 120 NAUTICAL MILES IN SE QUADRANT

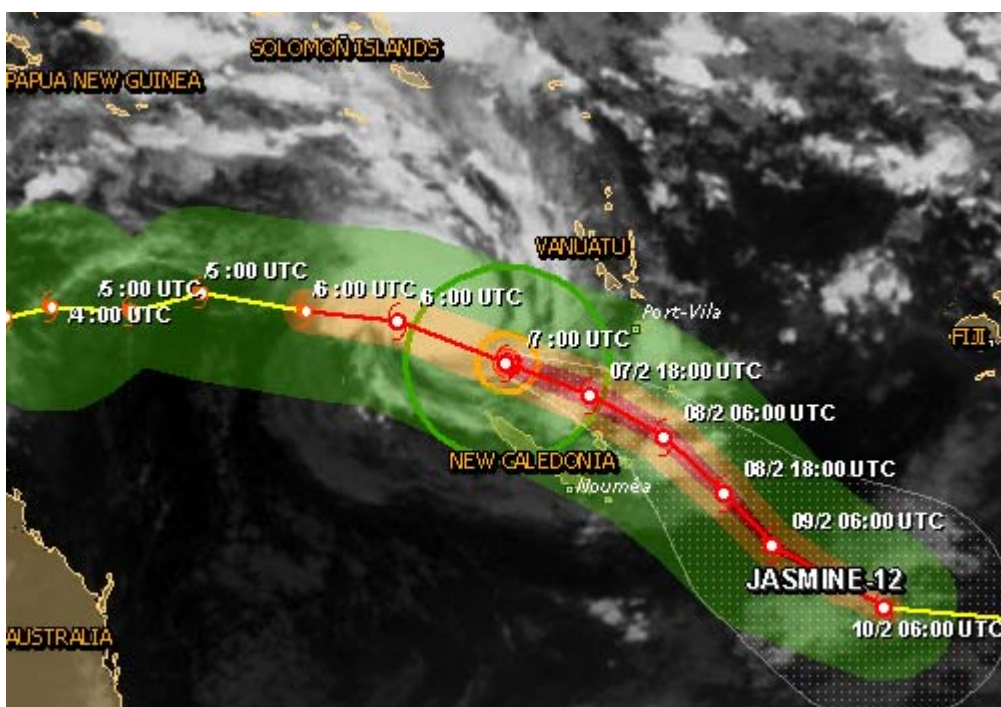
AND WITHIN 100 NAUTICAL MILES IN SW QUADRANT

AND WITHIN 180 NAUTICAL MILES IN NW QUADRANT

FORECAST POSITION NEAR 20.4S 169.1E AT 080600 UTC

AND NEAR 21.8S 170.6E AT 081800 UTC.

And from GDACS...



Tropical Cyclone JASMINE-12 can have a low humanitarian impact based on the Maximum sustained wind speed and the affected population and their vulnerability.

*Updated: this report is based on advisory number 7.*

- Tropical Cyclone Hurricane/Typhoon > 74 mph (maximum wind speed of 204 km/h)
- from 04/02/2012 06:00 to 07/02/2012 06:00
- Population affected by Category 1 (120 km/h) wind speeds or higher is 0
- Vulnerability: Medium

### **Extreme Rain**

Potential rainfall is calculated based on rainfall observed by several microwave satellite sensors.

The image shows the total rainfall accumulation associated with the cyclone

## **TONGA / Niue(TC Cyril Cat 1 to 2)**

Early yesterday morning TC Cyril passed over Tonga and caused minor damage on Vavau. The power grid remains down in some areas but should soon be fully restored. There was some damage to a water catchment system and tanks that are now being repaired. Later in the day TC Cyril intensified to a Category 2 as it approached Niue waters which triggered three special weather bulletins – the final one issued last night in Fiji cancelled the Cyclone alert.

### **Special Weather Bulletin Number THREE for Niue ON TROPICAL CYCLONE CYRIL**

ISSUED FROM RSMC NADI

**Feb 07/0830 UTC 2012 UTC.**

THE TROPICAL CYCLONE ALERT PREVIOUSLY IN FORCE FOR NIUE IS NOW CANCELLED.

A STRONG WIND WARNING REMAINS IN FORCE FOR NIUE.

TROPICAL CYCLONE CYRIL CENTRE 985HPA CATEGORY 2 WAS LOCATED NEAR 21 DECIMAL 4

SOUTH 169 DECIMAL 9 WEST OR ABOUT 260 KM SOUTH OF NIUE AT 070600 UTC. POSITION

FARE. CLOSE TO ITS CENTRE, THE CYCLONE IS ESTIMATED TO HAVE AVERAGE SUSTAINED

WINDS OF 90 KM/HR WITH MONENTARY GUSTS TO 110 KM/HR. EXPECT WINDS ABOVE 65 KM/HR

WITHIN 90 KM OF CENTRE IN THE SOUTHWEST QUADRANT AND WITHIN 190 KM OF CENTRE

ELSEWHERE. CYRIL IS MOVING EAST-SOUTHEAST AT ABOUT 40 KM/HR FURTHER AWAY FROM

NIUE.

## **SOLOMON ISLANDS (flooding)**

From the NDMO ...

### **BAD WEATHER [TC JASMINE] SI NDMO/NEOC SITUATION REPORT NUMBER 3**

**Date: 07th February\2012**

**Time Issued: 1700 Hrs**

-

#### **Situation Description:**

The bad weather associated with Tropical Cyclone Jasmine (Category Three) has cause intense Torrential rains due to the Cyclone's proximity to the country. The Solomon Islands Meteorological Services (SIMS) since 7:00 am on Monday 06th February had issued Tropical Cyclone Watch Advisory, which is still enforce for the next 24 hours as Winds of 15 to 25 knots increasing to 30 knots at times is expected with Seas will be rough to very rough with large Swells and heavy Rain at times with squally Thunderstorms. Reports received so far form all Provincial Disaster Offices indicated that the bad weather has been felt whole throughout the country with Rennell & Bellona, Makira, and Temotu Provinces and the Southern parts of Guadalcanal and Malaita Provinces are the most likely to be hardest hit Provinces due to their proximity to the system. However, Isabel and the other remaining Provinces including Honiara City have also providing reports of some destruction mostly as a result of flooding and landslide due to the heavy rains. The NEOC NDMO and the PDMO PEOCs are in close contact and are currently monitoring the situation the event continues to develop...

*... excerpt from report...*

#### **3. Makira Ulawa Province**

Reports received from communities via HF Radio this afternoon stated that heavy rain, strong winds and high sea still continue. Heavy rain cause water logged to food gardens, flooding washed away food gardens and cash crops like cocoa and coconut trees and dry nuts, wind blow down banana plantations, classrooms blow down/damaged by strong winds (one at Bwagarei and one at Wanehata). Bridges and culverts washed out by flooding (ward 8 & 9) and MV Haourosi was grounded at Maro'u bay on Tuesday by high waves (this report has been verified by the Marine Division).

### **SOI Met Service - TROPICAL CYCLONE WATCH ADVISORY NUMBER SEVEN (#7 cancelled TC watch advice as the system moved east)**

TROPICAL CYCLONE WATCH ADVICE NUMBER SEVEN ISSUED BY THE SOLOMON ISLANDS METEOROLOGICAL SERVICES AT 7:30 AM THIS MORNING THE 08<sup>TH</sup> FEBRUARY 2012.

ALL TROPICAL CYCLONE WATCH ADVICE CURRENT FOR RENNELL & BELLONA, MAKIRA, AND TEMOTU PROVINCES AND THE SOUTHERN PARTS OF GUADALCANAL AND MALAITA ARE **NOW CANCELLED**. HOWEVER, STRONG WIND WARNING (15 TO 25 KNOTS) IS STILL IN FORCE FOR ALL PROVINCES

### **FIJI (flood recovery)**

On 3 February, the Government of Fiji requested approximately US\$ 1.0 million in international assistance to respond to the flood affected areas. Priority areas - WASH and Health - total US\$ 400,000. Early Recovery needs in the agriculture sector include an additional US\$ 400,000. Prior to the 3 February request, eight donors pledged/committed over US\$ 1,000,000 to address priority needs identified during the first two weeks of the emergency.

In addition, the Government of Fiji requested OCHA to support information management, and logistics in Western Division EOC. The NDMO is facilitating regular aid coordination meetings and Divisional operational meetings are being held on a daily basis.