

# Chick-fil-A PEACH BOWL

## COLLEGE FOOTBALL PLAYOFF SEMIFINAL HOST 12.31.16

### Chick-fil-A Peach Bowl Leadership

Chairman: Steve Riddell  
President and CEO: Gary Stokan

### Title Sponsor

Chick-fil-A, Inc. became the Bowl's first-ever title sponsor in December 1996.

### Contact Information

**Matt Garvey**  
Chick-fil-A Peach Bowl  
Vice President, Communications  
404-586-8496 (w)  
404-964-6342 (c)  
mgarvey@cfabowl.com

**Jessica Lumsden**  
Chick-fil-A Peach Bowl  
Director, Communications  
404-586-1934 (w)  
404-713-5584 (c)  
jlumsden@cfabowl.com

**Hannah McSwain**  
Chick-fil-A Peach Bowl  
Assistant, Communications  
404-586-1932 (w)  
757-582-0616 (h)  
hmcswain@cfabowl.com

**Georgia Dome**  
One Georgia Dome Drive  
Atlanta, GA 30313  
Phone: 404-223-8011  
Fax: 404-223-8011  
Web: www.gadome.com

### Social Media



[Chick-fil-A Peach Bowl](#)



[@CFAPeachBowl](#)



[@CFAPeachBowl](#)



[Chick-fil-A Peach Bowl](#)



#9 Ole Miss (9-3, 5-2 SEC)  
REBELS

### AT A GLANCE

DATE: December 31, 2014  
TIME: 12: 30 p.m. ET  
LOCATION: Georgia Dome  
CAPACITY: 71,996  
SURFACE: Turf  
PAYOUT: \$4 million per conference + \$2 million for expenses per team  
TV: ESPN



#6 TCU (11-1, 8-1 Big 12)  
HORNED FROGS

## CHICK-FIL-A PEACH BOWL NUGGETS

### College Football Playoff

In April 2013, the Chick-fil-A Peach Bowl was selected to be a part of a group of six elite bowls to host the new College Football Playoff beginning in 2014 (Cotton, Fiesta, Orange, Rose, Sugar). Over the next 12 years, the Chick-fil-A Peach Bowl will host a College Football Playoff Semifinal (#1 vs. #4 or #2 vs. #3) every 3 years – the first following the 2016 season. In the other 8 years, the Bowl will host top-ranked teams as assigned by the College Football Playoff Selection Committee.

### Really Close Games

In its 46-year history, the Bowl has recorded 13 games decided by a field goal or less and five one-point games. The Chick-fil-A Peach Bowl is one of the most competitive bowl games in the history of college football. Fifty-seven percent of the games (26 of 46) have been decided by a touchdown or less.

### Looking for a ticket? Good luck.

The Chick-fil-A Peach Bowl has sold out 17 years in a row and 20 of 22 since moving into the Georgia Dome in 1992. The Bowl currently has the second-longest sellout streak out of all the bowl games, second only to the Rose Bowl. Over the last 10 years, the Chick-fil-A Peach Bowl is among the highest-attended bowls in the country at 71,108 per game.

### College Football's Most Charitable Bowl Game

The Chick-fil-A Peach Bowl leads all bowl games in charitable and scholarship contributions. This year, the Bowl contributed \$1.14 million to charities and educational institutions. The Chick-fil-A Peach Bowl has given more than \$17.5 million to various charitable organizations over the last 13 years.

### Record Breaking

The 2013 Chick-fil-A Peach Bowl, telecast by ESPN, reached an average of 8.69 million viewers, establishing it as ESPN's most-viewed non-BCS bowl game telecast of all time.

### What's Inside

<a href="#">Media Information</a>	2	<a href="#">TCU Schedule and Results</a>	16
<a href="#">ESPN Information</a>	3	<a href="#">TCU Coaching Staff</a>	16
<a href="#">Credentials</a>	4	<a href="#">TCU Roster</a>	17-18
<a href="#">Media Access</a>	5	<a href="#">Final Polls</a>	19
<a href="#">Media Hospitality</a>	6	<a href="#">Chick-fil-A Peach Bowl Record Book</a>	20
<a href="#">Team Designations/Directions</a>	7	<a href="#">Chick-fil-A Peach Bowl Game History</a>	21
<a href="#">The Georgia Dome</a>	8	<a href="#">Chick-fil-A Peach Bowl MVPs</a>	22
<a href="#">Game Day Information</a>	9-10	<a href="#">Year-by-Year Bowl Game Summaries</a>	23
<a href="#">Chick-fil-A Peach Bowl Hall of Fame</a>	11		
<a href="#">Conference Records and Team Stats</a>	12		
<a href="#">Ole Miss Schedule and Results</a>	13		
<a href="#">Ole Miss Coaching Staff</a>	13		
<a href="#">Ole Miss Roster</a>	14-15		



**School and Conference Contact Information**



**Ole Miss Sports Information**  
 Kyle Campbell  
 Phone: 662-915-7544  
 Cell: 662-816-7544  
 kyle@olemiss.edu



**TCU Sports Information**  
 Mark Cohen  
 Phone: 817-257-5394  
 Cell: 817-343-2017  
 m.cohen@tcu.edu



**SEC Media Relations**  
 Chuck Dunlap  
 2201 Richard Arrington Jr. Blvd N.  
 Birmingham, Alabama 35203  
 Phone: 205-458-3000  
 c.dunlap@sec.org



**Big 12 Media Relations**  
 Joni Lehmann  
 400 East Carpenter Freeway  
 Irving, Texas 75062  
 Phone: 469-524-1022  
 joni@big12sports.com

**CHICK-FIL-A PEACH BOWL: DID YOU KNOW?**

The Chick-fil-A Peach Bowl is one of America’s best bowl games at providing a memorable and exciting bowl experience for the student-athletes, coaches and fans of its participating teams. Did you know...

1. The Chick-fil-A Peach Bowl is the ninth-oldest bowl game in the history of college football?
2. In 2010, the Chick-fil-A Peach Bowl eclipsed the \$100 million mark in cumulative payout? With a \$7.4 million payout in 2014, the Chick-fil-A Peach Bowl \$125.2 million in cumulative payout over its 46-year history?
3. The Chick-fil-A Peach Bowl created and hosted, with partners Chick-fil-A and ESPN, the Chick-fil-A Kickoff Game to annually kick off the college football season? Since the inaugural matchup in 2008, teams that have played in the Chick-fil-A Kickoff Game have been ranked No. 1, No. 2 No. 5 (twice), No. 7, No. 9, No. 14, No. 16, No. 18, (twice) No. 19, No. 24 (twice) and No. 25.
4. Each April, the Chick-fil-A Peach Bowl hosts the Chick-fil-A Peach Bowl Challenge charity golf event? This three-day golf and resort experience features NCAA head coaches and celebrity alumni from around the country competing against their rivals for scholarship money. In eight years, the Chick-fil-A Peach Bowl Challenge has given more than \$4 million in scholarship and charity.
5. When Georgia upset No. 14 Virginia Tech in 2006, the Chick-fil-A Peach Bowl set the then-all-time attendance record for a sporting event in the Georgia Dome with 75,406 fans in attendance? That’s a bigger crowd than two Super Bowls and all the SEC Football Championship games at that time.
6. The Chick-fil-A Peach Bowl has generated more than \$512.7 million in economic impact since 1999? In 2013, the Bowl recorded a \$35.5 million economic impact for metro Atlanta.

**THE COLLEGE FOOTBALL PLAYOFF**

College football entered a new four-team playoff era this season. The format is simple: the best for teams, two semifinals played in bowl games and a championship game played in a different city each year. It’s the biggest innovation in the sport in decades.

2014-2015	No.1 Alabama vs. No. 4 Ohio St. Semifinal Jan. 1 8:30 p.m.	No. 2 Oregon vs. No. 3 Florida St. Semifinal Jan. 1 5 p.m.	No. 7 Mississippi St. vs. No. 12 Georgia Tech Dec. 31 8 p.m.	No. 8 Michigan St. vs. No. 5 Baylor Jan. 1 12:30 p.m.	No. 9 Ole Miss vs. No. 6 TCU Dec. 31 12 p.m.	No. 20 Boise State vs. No. 10 Arizona Dec. 31 4:30 p.m.	North Texas Winner of Sugar vs. Winner of Rose Jan. 12
2015-2016	Sugar (Jan. 1)	Rose (Jan.1)	Semifinal (Dec. 31)	Semifinal (Dec. 31)	Chick-fil-A Peach (Dec. 31)	Fiesta (Jan. 1)	Arizona (Jan. 11)
2016-2017	Sugar (Jan. 2)	Rose (Jan. 2)	Orange (Dec. 31)	Cotton (Jan. 2)	Semifinal (Dec. 31)	Semifinal (Dec. 31)	Tampa Bay (Jan. 9)



# ESPN

## ESPN TV ANNOUNCERS

### JOE TESSITORE: Play-by-Play



Joe Tessitore is a play-by-play commentator for ESPN's college football and basketball games, blow-by-blow commentator for *ESPN Friday Night Fights* and the host of the SEC Network's traveling Saturday pre-game show, *SEC Nation*, debuting in August 2014.

Through the years, Tessitore has established himself as a fixture in college sports. Football fans know him through his distinctive play-by-play work on ESPN's Saturday Night primetime college football game alongside veteran analyst Matt Millen, as well as his work in the BCS Orange Bowl and the BCS National Championship games.

Few ESPN broadcasters have more varied scheduled assignments than Joe Tessitore. As the longstanding blow-by-blow commentator for *ESPN Friday Night Fights*, Tessitore plays a major role in one of ESPN2's most successful series. In addition to his regular duties of football, and boxing, Tessitore has covered other sports for ESPN. Prior to 2011, he spent many years anchoring ABC/ESPN horse racing presentations including The Belmont Stakes and The Breeders' Cup World Championships. During the 2012-13 seasons, he began doing play-by-play work for ESPN's College Basketball coverage. For five years he was the host of ESPN's live New Year's Eve specials including Red Bull New Year, No Limits and the debut of ESPN's Year of the Quarterback. Tessitore is also a featured contributor for ESPN.com.

Tessitore joined ESPN in February 2002. The previous eight years, Tessitore made his mark as the sports anchor at WFSB-TV, the CBS affiliate in Hartford. In his spare time, Tessitore has given tireless and generous fundraising efforts to the Cystic Fibrosis foundation. He is a 1993 graduate of the Carroll School of Management at Boston College. He began his career in 1991 at KXAS, the NBC

### BROCK HUARD: Analyst



Brock Huard joined ESPN in August 2008. He works as a college football analyst for ESPN and ABC's Saturday games with Joe Tessitore and Shannon Spake. He also works as a studio analyst for the networks.

Since 2009, he has been the co-host on a sports talk show on ESPN 710 AM in Seattle. Huard was also a radio and television analyst for FSN and the Seahawks.

Huard was a member of the Seattle Seahawks from 1999-2001 and of the Indianapolis Colts in 2002-03. In 2004, he signed back with the Seahawks, but spent the entire 2004 season on Injured Reserve, the last year he played professional football.

Huard was the starting quarterback for three years at the University of Washington and held over 20 school records. He graduated in 1999 with a psychology degree. He has served on the charitable boards of Fellowship of Christian Athletes and the Pro Athletes Outreach.

### TIM TEBOW: Analyst



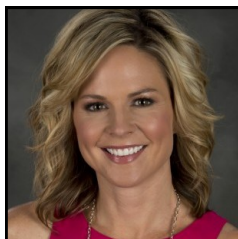
Heisman Trophy-winning quarterback and SEC football legend Tim Tebow joined ESPN in December 2013 as a college football analyst for *SEC Nation*, the Saturday morning pre-game show on the SEC Network, launching August 14, 2014. He first appeared in his new role during ESPN's 2014 BCS National Championship telecast.

Tebow led Florida to the BCS Championship where he was named MVP as the Gators defeated Oklahoma 24-14 in January 2009, capping a 13-1 season. Overall, he had a 48-7 record in three seasons at Florida and played in two SEC Championship Games. He was also on the 2006 season's National Championship team.

In 2010, he was chosen in the first round of the NFL Draft by the Denver Broncos and set an NFL Draft record for jersey sales, based on his collegiate and personal popularity. He started the last three games of his rookie season and became the team's full-time starting quarterback beginning in the sixth game of 2011. The Broncos were 1-4 before he became the starter, but began winning with him on the field, often coming from behind late in the fourth quarter, until they won their first AFC West title and first playoff game since 2005, defeating the Pittsburgh Steelers in overtime. Tebow was traded to the New York Jets during the offseason after the Broncos acquired free agent quarterback Peyton Manning. After the 2012 season, he was released. He spent the 2013 preseason with the New England Patriots.

In addition to his on-field exploits, Tebow is a cultural icon with immense popularity, based on his personality and open devotion to faith. He is equally lauded for the work he does off the field. While still attending Florida, he worked on the "First and 15" program benefiting Uncle Dick's Orphanage and later went on to create the Tim Tebow Foundation in 2010. The Foundation encompasses multiple philanthropic ventures that support children with life threatening illness, orphan outreach and general encouragement of citizens to volunteer.

### SHANNON SPAKE: Sideline



Shannon Spake joined ESPN in 2006 and serves multiple roles for the network. She is a sideline reporter for the Saturday college football games on ESPN2, Saturday Primetime College Basketball and Super Tuesday SEC college basketball telecasts, plus select college football bowl games. In addition, she works as a pit reporter on selected NASCAR race telecasts and reports on NASCAR and college sports for *SportsCenter*. She also was a reporter and host for the former ESPN2 program *NASCAR Now*.

Spake briefly worked for South Florida's *Neil Rogers Show* on WQAM in 1999 before moving to New York City and working for Nickelodeon as assistant coordinator of on-air promotions in 2000. She spent two years at CBS - including one at *The Early Show* as an associate producer, and while at CBS news covered events such as the 2000 presidential election and the September 11th tragedy. She also worked as a production assistant on *Real Sports with Bryant Gumbel* on HBO in 2003 and did freelance production work for a variety of specialty television projects, including the MTV Video Music Awards, VH-1 Fashion Awards, HBO boxing and *The NFL Today* on CBS.

In 2003, Spake became a reporter for the local Fox affiliate news station, WCCB-TV in Charlotte, N.C., and in 2004, she joined the Charlotte Bobcats and worked as a reporter and producer for the team's regional sports network, C-SET. She joined the SPEED Channel in 2005 to report for *NASCAR Nation*. While there, she co-hosted *Backseat Drivers* and reported from the NASCAR garage during the 2006 Daytona Speed Weeks. Spake also co-hosted a 2005 special from the NASCAR banquet in New York City.

Her first assignment for ESPN was as a pit reporter for the 2006 All-American Soap Box Derby Championships. Spake received her bachelor's degree in communications from Florida Atlantic University. She's mother to identical twin boys.

# CREENTIALS

## CREENTIAL PICK-UP SCHEDULE AND LOCATIONS

Credential pick-up prior to game day will take place at the Hyatt Regency Atlanta  
265 Peachtree Street Northeast, Atlanta, Ga. 30303

DATE	TIME	PICK-UP LOCATION
Dec. 27	8:00 am– 4:00 pm	Hyatt Regency Atlanta, International Ballroom Lobby
Dec. 28	8:00 am– 4:00 pm	Hyatt Regency Atlanta, International Ballroom Lobby
Dec. 29	8:00 am– 4:00 pm	Hyatt Regency Atlanta, International Ballroom Lobby
Dec. 30	8:00 am– 4:00 pm	Hyatt Regency Atlanta, International Ballroom Lobby
Dec. 31	8:30 am– 12:30 pm	Georgia Dome Media Will Call Gate E

### Credentialing Policy

Submitting a request does not guarantee approval. If granted, credentials **MUST** be picked up in person.

No credentials will be mailed and no substitutions will be made without the Bowl’s approval. If substitutions must be made, written notification must be e-mailed (mgarvey@cfabowl.com) or faxed (404-586-8508) to Matt Garvey prior to credential pick up.

***The Chick-fil-A Peach Bowl reserves the right to revoke any credential at any time.***

# PHOTOGRAPHERS

**Photo Check In:**

After entering the Dome and setting up your work station, photographers must report to the Photo Check-in table located behind the Dome information desk in the Gate E area. You **MUST** check in at this table and present your photo and video equipment for inspection. Credential holders deemed to have non-professional equipment will not be permitted access to the field.

**On-Field Shooting:**

Once your equipment has been inspected, you will be given a photographer’s vest. Photographers are required to wear the vest while shooting from the sidelines. Photographers not wearing a vest will be removed from the sidelines.

Photographers must stay behind the striped lines around the field and outside of the bench areas, with the exception of the pregame team entrances, until the game is over (see definition of “game over” below). There are a limited number of pre-assigned and marked end zone spaces reserved for select media outlets. Space on the sideline and end zone is available on a first-come, first-served basis.

**Coin Toss:**

The coin toss will be handled on a pool basis with Paul Abell acting as the pool photographer. Paul Abell will email files to all those who request shots in advance.

**Trophy Presentation:**

Photographers will have access to the field during the postgame trophy presentation. A select number of photographers will receive photo armbands granting access inside the barricaded/stage area.

**Game Over:**

Photographers, messengers and television personnel are not allowed on the field or inside the team bench area until the game is over. “Game over” is defined as follows:

- No time remaining on the clock and one team has a lead;
- No timeouts left and the team in the lead has the ball and there is less than 0:39 seconds remaining on the game clock **and the quarterback has knelt down to run out the clock.**

Anyone violating “game over” rules may result in immediate and future sanctions for both the individuals and agencies they represent.

**Runners & Equipment Carriers:**

Assistants must wear their Field Photo credential at all times. Assistants are not permitted to stand in the shooting area and must stand **DIRECTLY BEHIND** their photographer or against the back wall out of the way of the sideline TV cart. Assistants are asked to move with their photographer and not to loiter in the Portal C or Portal B areas as these will be heavily congested.

# MEDIA ACCESS

## PRESS CONFERENCES

All press conferences will take place at the following location:

**Hyatt Regency Atlanta  
International Ballroom North  
265 Peachtree Street  
Atlanta, GA 30303**

If you are not staying at the hotel, valet parking will be available at the main entrance of the hotel at a discounted rate for media.



## TRANSCRIPTS AND VIDEO

### Transcripts

Full transcripts will be available approximately **30 minutes** after each press conference, including postgame. Transcripts will be distributed via email and available for download at [Chick-fil-APeachBowl.com/transcripts](http://Chick-fil-APeachBowl.com/transcripts).

### Video

Video highlights will be available approximately **90 minutes** after each press conference and will be distributed via email and available for download at [Chick-fil-APeachBowl.com/footage](http://Chick-fil-APeachBowl.com/footage).

# CHICK-FIL-A PEACH BOWL PRESS CONFERENCE SCHEDULE

FRIDAY DECEMBER 26	SATURDAY DECEMBER 27	SUNDAY DECEMBER 28	MONDAY DECEMBER 29	TUESDAY DECEMBER 30
<p><i>Head Coaches and player availability at team hotels.</i></p> <p><b>Ole Miss:</b> 10:00 -10:30 a.m. Hilton Atlanta 2nd Floor Grand Ballroom D</p> <p><b>TCU:</b> 12:00 -12:30 p.m. Marriott Marquis M102</p>	<p><i>No Press Conference Scheduled</i></p> <p><b>Media availability at practice</b></p> <p><b>TCU:</b> Shuttle departs at 11:30 for Georgia Tech. Will return to hotel after 15-minute open period is complete.</p> <p>Player availability will take place at 2:30 at the Marriott Marquis in Room M102.</p> <p><b>Ole Miss:</b> Shuttle departs at 11:30 for Georgia State. Will return after 15-minute open period is complete.</p> <p>For player post-practice media availability at Georgia State, shuttle departs at 1:45 and will return after player availability.</p> <p>If practice is at Flowery Branch then shuttle will depart at 11:15 and return at conclusion of practice.</p> <p><i>* Locations and times subject to change.</i></p>	<p><i>Offensive/Defensive Coordinators &amp; Players</i></p> <p><b>TCU:</b> 8:30-9:15 a.m. <i>Defensive coordinator and five players</i></p> <p><b>Ole Miss:</b> 9:30-10:15 a.m. <i>Offensive coordinator and five players</i></p>	<p><i>Offensive/Defensive Coordinators &amp; Players</i></p> <p><b>TCU:</b> 9:30-10:15 a.m. <i>Offensive coordinator and five players</i></p> <p><b>Ole Miss:</b> 10:30-11:15 a.m. <i>Defensive coordinator and five players</i></p> <p><b>Media availability at practice</b></p> <p><i>Please note times and locations are subject to change.</i></p> <p><b>TCU:</b> 12:45-1:00 p.m. – practice open to the media at Georgia Tech</p> <p><b>Ole Miss</b> 3:40– 3:55 p.m. – practice open to the media at Georgia Dome</p>	<p><i>Joint Head Coaches</i></p> <p><b>Time:</b> 9:30– 11:00 a.m.</p>

# TEAM PRACTICE SCHEDULES

OLE MISS			TCU		
DATE	TIMES	LOCATION	DATE	TIMES	LOCATION
December 27	Shuttle departs at 11:30. Will return after 15-minute open period if at Georgia State.  For post practice availability shuttle will depart at 1:45 and return at approx. 2:30 if at Georgia State.  If practice location is at Flowery Branch, the shuttle will depart at 11:15 and return after practice.	Georgia State or Flowery Branch  * Location will be decided within 24 hours of practice	December 27	Shuttle departs at 11:30. Will return after 15-minute open period  Post practice availability will take place at 2:30 at the Marriott Marquis in Room M102.	Georgia Tech  Marriott Marquis M102
December 29	Shuttle departs at 3:15 for practice. Will return after 15-minute open period	Georgia Dome	December 29	Shuttle departs for practice at 12:15 and will return after the 15-minute open period is complete	Georgia Tech



## MEDIA HOSPITALITY SERVICES

### Hotel Accommodations

The **Hyatt Regency** has been selected as the Official Media Headquarters Hotel. Media will receive a discounted rate and should make reservations at <https://resweb.passkey.com/go/pbmedia2014>

The room rate is \$115 plus tax.

The media deadline is Saturday, December 26 at 5 p.m.

### Media Hospitality

A hospitality suite will be provided for the media at the Hyatt Regency during Bowl Week. The suite will include light food, snacks, beverages, and a fully stocked bar.

**Hyatt Regency Atlanta  
Woodruff Suite, second floor**

Hours of Operation:

Friday, December 26	7 a.m.—midnight
Saturday, December 27	7 a.m.—midnight
Sunday, December 28	7 a.m.—midnight
Monday, December 29	7 a.m.—midnight
Tuesday, December 30	7 a.m.—midnight
Wednesday, December 31	7 a.m.—10 a.m. 6 p.m.—midnight

### Media Work Room

A media work room will be provided for the media at the Hyatt Regency. The room will include phone and internet lines, as well as media information

**Hyatt Regency Atlanta  
Embassy Halls C&D**

Hours of Operation:

Friday, December 26	12 p.m.—midnight
Saturday, December 27	7 a.m.—midnight
Sunday, December 28	7 a.m.—midnight
Monday, December 29	7 a.m.—midnight
Tuesday, December 30	7 a.m.—midnight
Wednesday, December 31	7 a.m.—midnight

### Media Hospitality and Outings

#### Media Messages

**Dec. 30, 4 – 6 p.m.  
Hyatt Regency, Woodruff Suite  
(by appointment only)**

Professional spa staff will provide 10-minute stress-reducing chair massages.

To sign up for a time, contact Hannah McSwain (hmcswain@cfabowl.com or 757-582-0616)

#### Media Party at Andretti

**Dec. 29, 7 – 10 pm  
Andretti Indoor Karting & Games**

Join us for some go-kart action, games and food and drink at Atlanta's best indoor go kart track.

A shuttle will be provided from the Hyatt Regency to Andretti.

Shuttles will depart at 6:15 and 7:45 pm with return shuttles leaving at the conclusion of the event.

To RSVP contact Hannah McSwain (hmcswain@cfabowl.com or 757-582-0616)

#### Media Party at The College Football Hall of Fame

**Dec. 30, 7 – 9:30 pm  
College Football Hall of Fame**

On the eve of the game, we will host you for a private tour of the new state-of-the-art College Football Hall of Fame with dinner and a game on the jumbotron.

A shuttle will be provide from the Hyatt Regency to the College Football Hall of Fame.

Shuttles will depart at 6:45 and 7:45 pm departures with return shuttles leaving at the conclusion of the event.

To RSVP contact Hannah McSwain (hmcswain@cfabowl.com or 757-582-0616)



## TEAM DESIGNATIONS

	Ole Miss	TCU
Headquarter Hotel	Hilton Atlanta	Marriott Marquis
Practice Site	Georgia State/Flowery Branch	Georgia Tech
Uniform	Light	Dark
Georgia Dome Locker Room	NFL Visitor	NFL Home
Georgia Dome Sideline	South	North (Press Box)

## DIRECTIONS TO THE GEORGIA DOME FROM HOTELS

<u>TCU</u> Atlanta Marriott Marquis to Georgia Dome	<u>Ole Miss</u> Hilton Atlanta to Georgia Dome	<u>Media Hotel</u> Hyatt Regency to Georgia Dome
<ul style="list-style-type: none"> <li>Left out of parking deck onto Baker Street</li> <li>Left onto Centennial Olympic Park Drive</li> <li>Right onto Martin Luther King Drive</li> <li>Right onto Northside Drive</li> <li>Right into GOLD LOT parking north of Dome</li> <li>Left into BLUE LOT parking north of Dome</li> </ul>	<ul style="list-style-type: none"> <li>Left out of parking lot onto Courtland Street</li> <li>Right onto Andrew Young International Boulevard</li> <li>Left onto Centennial Olympic Park Drive</li> <li>Right onto Martin Luther King, Jr. Drive</li> <li>Right onto Northside Drive</li> <li>Right into GOLD LOT parking north of Dome</li> <li>Left into BLUE LOT parking north of Dome</li> </ul>	<ul style="list-style-type: none"> <li>Left out of front driveway of Hyatt</li> <li>Right onto Andrew Young International Boulevard</li> <li>Left onto Centennial Olympic Park Drive</li> <li>Right onto Martin Luther King, Jr. Drive</li> <li>Right onto Northside Drive</li> <li>Right into GOLD LOT parking north of Dome</li> <li>Left into BLUE LOT parking north of Dome</li> </ul>

## TRAFFIC ADVISORY

Please note that due to construction around the Dome, traffic patterns are constantly changing. Please check at [www.Chick-fil-A PeachBowl.com](http://www.Chick-fil-A-PeachBowl.com) for game day traffic updates.

## MEDIA SHUTTLE

A shuttle will be provided as a courtesy to the media throughout Bowl Week. The Media Shuttle will pick up and drop off at the street-level front drive of the media hotel (Hyatt Regency Atlanta). See below for a destination schedule. Media credential is required for the shuttle and media members can bring a guest on the shuttle.

Dec. 27	Practice sites – departs 30 minutes before practice and returns after interviews.	Dec. 30	Atlanta entertainment areas
Dec. 28	Atlanta entertainment areas		<b>Bowl Media Party (College Football Hall of Fame) ;</b> 6:45 and 7:45 pm departures with return shuttles leaving at the conclusion of the event.
Dec. 29	Practice sites – departs 30 minutes before practice and returns after open period.	Dec. 31	<b>To Georgia Dome:</b> Picks up every 30 minutes beginning at 8:00 am until 12:00 pm
	<b>Evening Bowl Media Outing (Andretti Karting &amp; Games)</b> – 6:15 and 7:45 pm departures with return shuttles leaving at the conclusion of the event.		<b>Back to Media Hotel:</b> Shuttles every 30 minutes from 4:00 – 8:00 p.m.



For the 23rd straight year, the Chick-fil-A Peach Bowl will take place inside the Georgia Dome. Located in the heart of Downtown Atlanta, the Dome has hosted many other NCAA events, including the SEC Football Championship for the past 21 years, 12 different ACC and SEC men's basketball tournaments and the NCAA Men's Final Four three times, in 2002, 2007 and most recently in 2013.



Also the home venue for the NFL's Atlanta Falcons, the Georgia Dome is owned by the state of Georgia and operated by the Georgia World Congress Center Authority, which also operates the Georgia World Congress Center and Centennial Olympic Park.

Paired with the adjacent 2.5 million-square-foot World Congress Center and the 21 acre Centennial Park, the three facilities comprise one of the largest sports, entertainment and convention complexes in the world. The Georgia Dome alone provides arena and stadium configured seating between 20,000 and 80,000 people. The Dome's football seating capacity is 71,250, including 196 executive suites and 4,600 club seats

## DOME FUN FACTS

### Structure

- A total of 8,300 tons of reinforced steel was used to construct the Dome. That is more than the weight of iron and steel used in the Eiffel Tower.
- A 437-mile sidewalk, from Atlanta to Cincinnati, could be built from the 110,000 cubic yards of concrete used at the Dome.
- The building covers 8.9 acres and is as tall as a 27-story building.
- The 290-foot high roof is composed of 130 Teflon-coated fiberglass panels. The roof's supporting cables total 11.1 miles. The roof spans 615 feet at its widest point and 750 feet at its longest point.
- A pair of C-5 military transport planes could fit on the Georgia Dome's floor, which contains 102,000 square feet of prime exhibition space.

### Utilities

- Lighting is provided by 798 lighting fixtures in the roof structure.
- It takes 16,400 kilowatts of power to operate the Dome – enough electricity to light up a city with a population of 13,000.
- The four, 1,250-ton air conditioning units in the Georgia Dome generate enough power to cool 1,666 homes.
- To supply soft drinks to dispensers, thousands of liquid lines wind through the stadium. These include 32,952 feet of lines (the length of 109 football fields) to feed liquids to hundreds of dispensers throughout the building.

### Records Set At The Dome

- **Most Passing Yards in the Super Bowl:** In one of two Super Bowls hosted at the Dome, St. Louis Rams quarterback Kurt Warner threw for 414 yards in Super Bowl XXXIV on January 30, 2000. The Dome also hosted Super Bowl XXVIII (Dallas vs. Buffalo, 1994).
- **Longest Paper Airplane Flight:** The level flight duration record for a hand-launched paper airplane is 27.6 seconds by Ken Blackburn of St. Louis, on October 8, 1998.
- **Dome's Largest Hot Dog:** Sara Lee made a 1,996-foot wiener for the 1996 Olympics that took over 2,000 buns to hold it.
- **Fastest Men's Indoor 400 Meter Race:** Michael Johnson won the 400 meter title in 44.63 seconds at the USA Indoor Track and Field Championships on March 4, 1995.





## PRESS BOX/FIELD LEVEL SERVICES

### Press Box and Field Level Services

Media members will receive a Chick-fil-A Peach Bowl game program and team roster flip card prior to the game. In addition, each university's Sports Information Department will provide media guides and current individual and team statistics.

During the game, a play-by-play information sheet will be distributed after each quarter.

At halftime, game statistics will be available. Following the game, complete statistics – team, individual and scoring summary – and postgame coaches' and players' quotes will be available in the press box.

### Media Meals

**Pregame:** A full meal will be served starting at 10:30 a.m.

**Halftime:** A snack will be provided at the start of halftime.

**Postgame:** A meal will be served upon the conclusion of the postgame press conferences.

Coffee and cold drinks are available throughout the game in the press box and field level media area.

### Telephone Lines

Media pool lines will be made available at no charge in the press box and in the photographers' field level media suite.

### Internet Access at the Georgia Dome

**Press box media:** To provide an upgraded in-game experience, internet hard lines have been installed at every seat in the press box. Wireless access will also still be available.

**Field level media:** Internet hard lines will be available in the field level media suite, and wireless internet access is available throughout the Gate E area.

**Wireless:** Wireless is available for all members of the media, using the following login information:

**WiFi Network:** GeorgiaDomeMedia

**Password:** AtlantaGA

**Note: Frequency Coordination**

To ensure a smooth working environment for all media outlets and event staff during the game, it is imperative that we collect wireless frequency information from anyone who may use wireless equipment at any point before, during or after the game.

**If you failed to supply this information when you made your credential request, please email the following information to [mgarvey@cfabowl.com](mailto:mgarvey@cfabowl.com):**

- User name
- User contact info (phone, e-mail)
- Frequencies used (block range)
- Number of frequencies used
- How the frequency will be used
- When the frequency will be used

### Live Game Stats

The Chick-fil-A Peach Bowl will provide live web stats, available at [Chick-fil-APeachBowl.com](http://Chick-fil-APeachBowl.com). Stat monitors will NOT be provided the press box, so please plan accordingly.

**Live stats are available at [www.Chick-fil-APeachBowl.com](http://www.Chick-fil-APeachBowl.com)**



## PRESS BOX/FIELD LEVEL SERVICES

### Broadcast Feed

Please be advised that, in accordance with College Football Playoff media regulations, **ENG / TV crews representing media outlets will NOT be permitted to shoot game action from the sidelines during play.**

In lieu of sideline access during the game, an electronic distribution area will be set up to supply an audio-video feed for recording on site in both HD and SD formats. **ENG crews will be permitted sideline access up to 45 minutes before kickoff and at the conclusion of the game (0:00 on the game clock) and will be permitted to record the postgame press conferences.**

Television crews must provide their own video recorder for receiving composite or HD SDI video in the media compound. Standard BNC connections will be required for video, XLR for audio. The video feed is net return while the audio feed is mic level. Video and audio are provided via separate mult boxes.

### Television Rights and Highlight Policy

Exclusive television rights for the Chick-fil-A Peach Bowl are owned by ESPN. Local television affiliates are permitted to air up to three (3) minutes of highlights during the 72-hour period following the game – carrying a “Courtesy ESPN” tag.

### Field Access

**All credentialed media will have access to the sidelines until approximately 45 minutes before kickoff.** Electronic news gathering (ENG) crews will be permitted to produce “live shots” in designated areas on the playing field during that same window.

**With five (5) minutes left on the game clock at the end of the game, credentialed media – with the exception of ENG crews – will be allowed back on the sidelines. With “0:00” on the game clock, non-rightsholding ENG crews will be allowed back on the sidelines.** TV crews will be permitted to go live from the field at the conclusion of the game, once ESPN has concluded its broadcast.

### Post Game Interview Procedures

Following a 10-minute cooling off period after the game, the Bowl will host a press conference with the losing team’s head coach and a selected player(s) in the Field Level Media Suite near Gate E. The winning team’s head coach and selected player(s) will be available immediately following the first session. **Players from both teams will be available inside the locker rooms for a minimum of 30 minutes after the cooling off period ends.**

Coaches and players are obligated first to the credentialed media covering the game before making themselves available to single outlets and must report to the interview area immediately following the cooling off period.

Audio and video of the post-game press conferences will be shown in the press box and quotes will be distributed in the press box and Field Level Media Suite.

**NOTE: The main press box elevator will be shut down with 2:00 remaining in the game** to allow coaches to get down from the coaches booth. Alternate elevators are available to the media and you will be directed to them by Bowl staff if you are trying to get to the field level during that time.



# CHICK-FIL-A PEACH BOWL HALL OF FAME



## HALL OF FAME MEMBERS

Inductee	Category	School	Bowl Years	Inducted
Bobby Dodd	Coach	Georgia Tech	1971, 78	2002
Don McCauley	Player	North Carolina	1970	2002
George Crumbley	Bowl Staff		1968 –2009	2002
Jim Kelly	Player	Miami	1980	2002
Mike Singletary	Player	Baylor	1979	2002
Randy White	Player	Maryland	1973	2002
Ron Sellers	Player	FSU	1968	2002
Vince Dooley	Admin	Georgia	1973, 89,95, 98	2002
Wilber Marshall	Player	Florida	1981	2002
Harris Barton	Player	UNC	1983	2003
Jerry Claiborne	Coach	Maryland	1973	2003
John Swofford	AD	UNC	1970	2003
Reggie White	Player	Tennessee	1982	2003
Dick Bestwick	Bowl Staff		1985, 86	2004
Hayden Frye	Coach	Iowa	1982, 88	2004
Merton Hanks	Player	Iowa	1988	2004
Art Still	Player	Kentucky	1976	2005
Johnny Majors	Coach	Tennessee	1987	2005
Reggie Roby	Player	Iowa	1982	2006
George Welsh	Coach	Virginia	1984, 95, 98	2006
Jim Everett	Player	Purdue	1984	2007
Frank Kush	Coach	Arizona State	1970	2007
Chuck Long	Player	Iowa	1982	2008
Lou Holtz	Coach	N.C. State	1972, 75	2008
Tiki Barber	Player	Virginia	1995	2009
Don Nehlen	Coach	West Virginia	1981	2009
S. Truett Cathy	Chick-fil-A (title partner)			2009
Rod Woodson	Player	Purdue	1984	2010
Pat Dye	Coach	Auburn	1990	2010
Terry Kinard	Player	Clemson	1979	2011
Bill Dooley	Coach	UNC, Virginia Tech	1970, 81, 86	2011
Phillip Fulmer	Coach	Tennessee	2002, 03	2012
Matt Stinchcomb	Player	Georgia	1995, 98	2012
Ron Allen	Corporate Contributor			2012
Robert Dale Morgan	Bowl Staff		1986-1998	2012
Bobby Bowden	Coach	FSU, West Virginia	1972, 75, 83	2013
Tony Richardson	Player	Auburn	1990	2013
Earle Bruce	Coach	Iowa State	1977	2014
Ted Brown	Player	NC State	1975, 1977	2014

## 2014 HALL OF FAME INDUCTEES

### Earle Bruce, Iowa State



An illustrious coach with a track record of proven success, Earle Bruce amassed a 154-90-2 coaching record with five different universities. Bruce's head coaching career began in 1972 at the University of Tampa, where his squad went 10-2 and picked up a Tangerine Bowl win.

Bruce was hired as the head coach of Iowa State in 1973. During his six seasons, Earle Bruce led the Cyclones to their second and third bowl berths in program history, including an appearance in the 1977 Peach Bowl.

In 1979 Bruce was offered the head coaching position at Ohio State University. During his tenure at Ohio State, he led the Buckeyes to eight bowl appearances, including two appearances in the Rose Bowl and two appearances in the Fiesta Bowl. He won four Big Ten Championships (1979, 1981, 1984, and 1986) and earned Big Ten Coach of the Year honors in 1979.

Following his run at Ohio State, Bruce coached at Northern Iowa in 1988 and ended his collegiate coaching career at Colorado State from 1989-1992. Bruce was inducted into the Louis Menze Hall of Fame at Iowa State in 1992 and the College Football Hall of Fame in 2002.

### Ted Brown, North Carolina State



One of the most distinguished running backs in North Carolina State history, Ted Brown appeared in the Chick-fil-A Peach Bowl twice (1975, 1977). In the 1975 Peach Bowl, Brown rushed for 159 yards on 21 carries and caught two passes for 19 yards, but State fell 13-10 to West Virginia. Brown and the Wolfpack returned to Atlanta for the 1977 Peach Bowl, where Brown rushed

for 114 yards, caught seven passes for 65 yards and scored one touchdown en route to a 24-14 victory over Iowa State.

By the time his tenure in Raleigh came to an end, Brown had set the Atlantic Coast Conference career rushing record with 4,602 yards and the single game rushing record with 251 yards against Penn State in 1977. An All-ACC pick for all four years of college, Brown was named a consensus All-American in 1978.

After leaving NC State, Brown was drafted by the Minnesota Vikings in the first round with the 16<sup>th</sup> pick overall and played for the Vikings from 1979-1986. He was inducted into the North Carolina Sports Hall of Fame in 1995 and was inducted into the College Football Hall of Fame in 2013.



# CONFERENCE BOWL RECORDS & TEAM STATS

## CONFERENCE BOWL RECORDS



TEAM	OVERALL RECORD	LAST BOWL
Alabama	34-23-3	2013 Sugar Bowl (L)
Arkansas	13-23-3	2011 Cotton Bowl (W)
Auburn	22-14-2	2013 BCS Championship (L)
Florida	20-20-0	2012 Sugar Bowl (L)
Georgia	27-19-3	2013 Gator Bowl (L)
Kentucky	8-7-0	2010 BBVA Compass (L)
LSU	23-21-1	2013 Outback Bowl (W)
Ole Miss	23-12-0	2013 Music City Bowl (W)
Mississippi St.	10-7-0	2013 Liberty Bowl (W)
Missouri	14-16-0	2013 Cotton Bowl (W)
South Carolina	7-12-0	2013 Capital One Bowl (W)
Tennessee	25-24-0	2010 Music City Bowl (L)
Texas A&M	16-19-0	2013 Chick-fil-A Peach Bowl (W)
Vanderbilt	4-2-1	2013 BBVA Compass Bowl (W)



TEAM	OVERALL RECORD	LAST BOWL
Baylor	10-10-0	2013 Fiesta Bowl (L)
Iowa State	3-9-0	2012 Liberty Bowl (L)
Kansas	6-6-0	2008 Insight Bowl (L)
Kansas State	7-10-0	2013 Buffalo Wild Wings (L)
Oklahoma	28-18-1	2013 Sugar Bowl (W)
Oklahoma St.	15-9-0	2013 Cotton Bowl (L)
Texas	27-23-2	2013 Alamo Bowl (L)
TCU	13-15-1	2012 Buffalo Wild Wings Bowl (L)
Texas Tech	14-21-1	2013 National University Holiday Bowl (W)
West Virginia	14-18-0	2012 Pinstripe Bowl (L)

## CUMULATIVE SEASON STATISTICS

STATISTICS	REBELS	OPP	TCU	OPP
<b>SCORING</b>	365	166	562	244
Points Per Game	30.4	13.8	46.8	20.3
<b>FIRST DOWNS</b>	255	215	307	208
Rushing	95	95	128	84
Passing	142	105	160	112
<b>RUSHING YARDS</b>	2012	1603	2512	1405
Average/Game	167.7	133.6	209.3	117.1
<b>PASSING YARDS</b>	3307	2251	3994	2909
Average/Game	275.6	187.6	332.8	242.4
<b>TOTAL OFFENSE</b>	5319	3854	6506	4314
Average/Game	443.2	321.2	542.2	359.5
<b>KICK RETURNS:</b>				
#-Yards	26-502	41-828	33-670	51-1024
Average	19.3	20.2	20.3	20.1
<b>PUNT RETURNS:</b>				
#-Yards	22-140	17-60	33-339	9-9
Average	6.4	3.5	10.3	-1.0
<b>INT RETURNS:</b>				
#Yards	19-332	12-189	23-377	8-60
Average	17.5	15.8	16.4	7.5
<b>FUMBLES-LOST</b>	17-9	16-9	23-10	23-13
<b>PENALTIES:</b>				
#Yards	63-505	73-641	77-697	65-606
Average/game	42.1	53.4	58.1	50.5
<b>PUNTS—Yards</b>	60-2598	85-3709	60-2338	92-3984
Average/punt	43.3	43.6	39.0	43.4
Net punt average	41.6	40.6	37.5	37.9
<b>KICKOFFS – Yards</b>	69-4296	41-2497	102-6271	52-3062
Average/kick	62.3	60.9	61.5	58.9
Net kick average	41.2	39.5	40.2	38.3
<b>TIME OF POSSESSION</b>	28:30	31:30	30:15	29:45
<b>3rd DOWN CONVER.</b>	69/168	57/183	77/183	54/204
3rd-Down Pct.	41%	31%	42%	28%
<b>4th DOWN CONVER.</b>	9/19	7/14	6/14	12/21
4th-Down Pct.	47%	50%	46%	57%
<b>SACKS BY— Yards</b>	25-206	26-139	35-206	20-110
<b>MISC YARDS</b>	-24	0	0	0
<b>TDs SCORED</b>	49	18	71	28
<b>FGs -ATTEMPTS</b>	8-14	13-18	22-26	16-16
<b>ON-SIDE KICKS</b>	0-0	0-1	1-1	1-1
<b>RED-ZONE SCORES</b>	(28-39)	(23-32)	(54-63)	(26-30)
	72%	72%	86%	87%
<b>RED ZONE TDs</b>	(23-39)	(12-32)	(38-63)	(13-30)
	59%	38%	60%	43%
<b>PAT-ATTEMPTS</b>	(47-49)	(17-17)	(70-71)	(26-28)
	96%	100%	99%	93%



## OLE MISS REBELS 2014 SCHEDULE AND RESULTS

2014 Results		Aug. 28 vs. Boise State (Atlanta)	W, 35-13	Nov. 1 vs. #3 Auburn	L, 35-31
Overall	9-3	Sept. 6 at Vanderbilt	W, 41-3	Nov. 8 vs. Presbyterian	W, 48-0
Conference	5-3	Sept. 13 vs. Louisiana-Lafayette	W, 56-15	Nov. 22 at Arkansas	L, 30-0
Home	6-1	Sept. 27 vs. Memphis	W, 24-3	Nov. 29 vs. #4 Mississippi State	W, 31-17
Away	2-2	Oct. 4 vs. #1/#3 Alabama	W, 23-17		
Neutral	1-0	Oct. 11 at #14/14 Texas A&M	W, 35-20		
		Oct. 18 vs. Tennessee	W, 34-3		
		Oct. 25 at. #23/24 LSU	L, 10-7		

## OLE MISS REBELS COACHING STAFF

### HUGH FREEZE-- HEAD COACH



A Mississippi native, inspirational leader and one of the nation's top rising coaches, Hugh Freeze was the first choice to return championships to Ole Miss Football and was introduced as the Rebels' 37th head coach on December 5, 2011.

Inheriting a team that won just two games in 2011 and had lost 14 straight Southeastern Conference games, Freeze has directed Ole Miss to three bowl appearances in his first three years – the first coach in school history to do that.

The Rebels have increased their win total in each year under Freeze, including their first nine-win regular season since 2003 this year. Ole Miss has been nationally ranked throughout this entire season, rising as high as No. 3 for the first time since 1964.

In all, Freeze has a 54-21 career college coaching record and 24-14 mark at Ole Miss entering the Chick-fil-A Peach Bowl matchup against TCU. He has guided Ole Miss to three straight winning seasons for the first time since 2001-03.

After leading the Rebels to a 2013 Music City Bowl win and 8-5 final record, he was named the 2013 Grant Teaff Coach of the Year by the Fellowship of Christian Athletes.

Freeze and his staff have helped transform the makeup of the Ole Miss roster (back-to-back top-15 signing classes, including a 2013 class that ranked as high as No. 2 nationally) and the production on the field (Ole Miss has set numerous school records and ranks highly in the nation in many categories).

Freeze has helped develop quarterback Bo Wallace into one of the best in school history and has seen 10 players earn All-SEC honors during his tenure, including first team All-Americans Cody Prewitt (2013) and Senquez Golson (2014).

A noted speaker and recruiter throughout his career, Freeze has enjoyed success at nearly every coaching level over the past 19 years, from high school to NAIA to FBS, and each stop has featured a high-scoring offense and the ability to motivate young people.

Freeze was named Sun Belt Coach of the Year after leading Arkansas State to the 2011 Sun Belt Championship and setting all kinds of school and conference records in his one year as head coach. His other college coaching stops have included Arkansas State offensive coordinator (2010), Lambuth University head coach (2008-09), Ole Miss assistant coach and recruiting coordinator (2006-07) and Ole Miss assistant A.D. for football external affairs (2005).

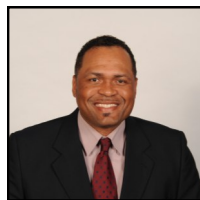
Before that, Freeze was a high school head football coach at Briarcrest Christian (Memphis, Tennessee) from 1995-2004.

Freeze received an associate's degree from Northwest Mississippi Community College in 1990 and earned his bachelor's degree in mathematics with a minor in coaching and sports administration from the University of Southern Mississippi in 1992.

Born in Oxford and raised in Independence, Mississippi, Hugh, 45, and his wife, Jill, are the parents of three daughters, Ragan (16), Jordan (15) and Madison (12).



Tom Allen  
Assistant Coach/Special Teams  
Coordinator/Linebackers



Maurice Harris  
Assistant Coach/Recruiting  
Coordinator for Offense/Tight Ends



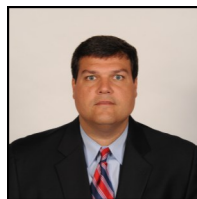
Grant Heard  
Assistant Coach/Wide Receivers



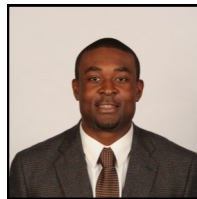
Jason Jones  
Assistant Coach/Co-Defensive  
Coordinator/Cornerbacks



Chris Kiffin  
Assistant Coach/Recruiting Coordi-  
nator for Defense/Defensive Line



Matt Luke  
Assistant Head Coach/Co-  
Offensive Coordinator/Offensive



Derrick Nix  
Assistant Coach/Running Backs



Dan Werner  
Assistant Coach/Co-Offensive  
Coordinator/Quarterbacks



Dan Wommack  
Associate Head Coach for Defense/  
Defensive Coordinator/Safeties



**OLE MISS REBELS ROSTER**

**ALPHABETICAL**

No.	Name	Pos.
8	Quincy Adebeyejo	WR
31	Justin Anderson	DB
29	Brandon Bell	WR
68	Justin Bell	OL
95	Bryon Bennett	DL
81	Trey Bledsoe	WR
76	Daronte Bouldin	OL
13	Eugene Brazley	RB
8	Chief Brown	DB
90	Fadol Brown	DE
87	Matt Brown	TE
14	Serderius Bryant	LB
9	Ryan Buchanan	QB
35	D.K. Buford	DB
26	Quintavius Burdette	WR
41	Billy Busch	LB
77	Talbot Buys	OL
6	Cliff Coleman	DB
12	Tony Conner	DB
75	Robert Conyers	OL
74	Fahn Cooper	OL
88	Cody Core	WR
23	Carlos Davis	DB
16	Drew Davis	QB
37	Luke Davis	LB
59	Will Denny	LS
7	Mark Dodson	RB
19	Kendrick Doss	QB
82	Dylan Dyer	TE
11	Will Easter	WR
7	Trae Elston	DB
17	Evan Engram	TE
12	Sammie Epps	WR
17	Victor Evans	DE
53	Will Few	LS
93	Andrew Fletcher	K
55	Craig Frigo	OL
86	Jordan Gallegos	WR
31	DeMarquis Gates	LB
94	Will Gleeson	P
85	David Gobbell	DB
21	Senquez Golson	DB
43	Matt Greer	DB
40	Josh Gregory	DB
94	Issac Gross	DT
56	Woodrow Hamilton	DT
3	C.J. Hampton	DB
83	Dayall Harris	WR
27	Marquis Haynes	DE
21	Darrius Henderson	QB
28	Mike Hilton	DB
45	Lavon Hooks	DT
65	Chase Hughes	OL
10	C.J. Johnson	DE
52	Davion Johnson	OL
36	Josh Johnson	WR
39	Martin Johnson	RB
19	Derrick Jones	DB/WR
21	Akeem Judd	RB
29	David Kamara	DB
2	DeVante Kincade	QB

**OLE MISS NUMERICAL ROSTER**

No.	Name	Pos.	Ht.	Wt.	Yr.	Hometown/High School
1.	Laquon Treadwell	WR	6-2	229	SO-1L	Crete, Ill./Crete-Monee
2.	DeVante Kincade	QB	6-0	202	FR-RS	Dallas, Texas/Skyline
2	Kailo Moore	DB	5-10	188	SO-1L	Rosedale, Miss./West Bolivar
2	Tee Shepard	DB	6-1 1	95	SO-JC	Fresno, Calif./Washington Union
3	C.J. Hampton	DB	6-0	192	FR-HS	Meridian, Miss./Meridian
3	D.Stringfellow	WR	6-3	229	SO-TR	Perris, Calif./Rancho Verde
4	Denzel Nkemdiche	LB	5-11	212	JR-2L	Loganville, Ga./Grayson
5	l'Tavius Mathers	RB	5-11	190	JR-2L	Murfreesboro, Tenn./Blackman
5	Robert Nkemdiche	DT	6-4	280	SO-1L	Loganville, Ga./Grayson
6	Cliff Coleman	DB	5-10	186	SR-3L	Lauderdale Lakes, Fla./Boyd H. Anderson
6	Jaylen Walton	RB	5-8	166	JR-2L	Memphis, Tenn./Ridgeway
7	Mark Dodson	RB	5-10	198	SO-1L	Memphis, Tenn./Whitehaven
7	Trae Elston	DB	6-0	195	JR-2L	Oxford, Ala./Oxford
8	Quincy Adebeyejo	WR	6-3	189	SO-1L	Cedar Hill, Texas/Cedar Hill
8	Chief Brown	DB	6-1	200	JR-2L	Winona, Miss./Winona
9	Ryan Buchanan	QB	6-3	208	FR-RS	Jackson, Miss./Jackson Prep
9	Breeland Speaks	DL	6-4	310	FR-HS	Jackson, Miss./Callaway
10	C.J. Johnson	DE	6-2	225	JR-3L	Philadelphia, Miss./Philadelphia
10	Vince Sanders	WR	6-1	185	SR-3L	Macon, Miss./Noxubee County
11	Will Easter	WR	6-0	83	SO-TR	Rosemary Beach, Fla./Arnold
11	Markell Pack	WR	6-3	181	FR-HS	Purvis, Miss./Purvis
11	Channing Ward	DE	6-4	274	JR-2L	Aberdeen, Miss./Aberdeen
12	Tony Conner	DB	6-0	217	SO-1L	Batesville, Miss./South Panola
12	Sammie Epps	WR	6-5	215	FR-HS	Greenwood, Miss./Greenwood
13	Eugene Brazley	RB	5-9	189	FR-RS	New Orleans, La./G.W. Carver
14	Serderius Bryant	LB	5-9	220	SR-3L	Sanford, Fla./Seminole
14	Bo Wallace	QB	6-4	217	SR-2L	Pulaski, Tenn./Giles County
15	Jeremy Liggins	TE	6-3	296	SO-JC	Oxford, Miss./Lafayette
15	Kendarius Webster	DB	5-11	170	FR-HS	Stockbridge, Ga./Stockbridge
16	Drew Davis	QB	6-2	215	SO-JC	Chapel Hill, N.C./East Chapel Hill
16	Collins Moore	WR	6-1	201	SR-3L	Madison, Ala./Bob Jones
17	Evan Engram	TE	6-3	227	SO-1L	Powder Springs, Ga./Hillgrove
17	Victor Evans	DE	6-4	221	FR-HS	Dallas, Texas/Skyline
19	Kendrick Doss	QB	6-0	211	FR-HS	Florence, Ala./Florence
19	Derrick Jones	DB/WR	6-2	182	SO-1L	Eupora, Miss./Eupora
20	Christian Russell	LB	6-0	235	JR-JC	Fayetteville, N.C./Hoke County
21	Senquez Golson	DB	5-9	176	SR-3L	Pascagoula, Miss./Pascagoula
21	Darrius Henderson	QB	5-9	185	FR-RS	Memphis, Tenn./Southwind
21	Akeem Judd	RB	6-0	220	JR-JC	Durham, N.C./Southern
22	Ray Ray Smith	LB	6-2	208	FR-RS	Florence, Ala./Florence
22	Jordan Wilkins	RB	6-1	209	FR-RS	Cordova, Tenn./St. Benedict at Auburndale
23	Carlos Davis	DB	5-8	171	JR-2L	Birmingham, Ala./Huffman
23	Taylor Polk	LB	5-11	209	FR-RS	Magee, Miss./Brandon
24	Keith Lewis	LB	6-0	220	SR-3L	Tampa, Fla./Freedom
25	Cody Prewitt	DB	6-2	217	SR-3L	Bay Springs, Miss./Silva Bay Academy
26	Quintavius Burdette	WR	5-11	186	JR-2L	Senatobia, Miss./Senatobia
26	C.J. Moore	DE	6-0	186	FR-HS	Bassfield, Miss./Bassfield
27	Marquis Haynes	DE	6-3	220	FR-HS	Jacksonville, Fla./University Christian
27	Cale Luke	WR	6-1	200	FR-RS	Clinton, Miss./Clinton
28	Mike Hilton	DB	5-9	182	JR-2L	Fayetteville, Ga./Sandy Creek
28	LaKedrick King	DB	5-8	171	SR-1L	Duncanville, Texas/Duncanville
29	Brandon Bell	WR	6-0	205	JR-JC	Columbus, Miss./Heritage Academy
29	David Kamara	DB	5-10	199	SO-1L	Loganville, Ga./Grayson
30	A.J. Moore	DB	6-1	190	FR-HS	Bassfield, Miss./Bassfield
31	Justin Anderson	DB	5-9	184	FR-RS	Houston, Texas/Houston Christian
31	DeMarquis Gates	LB	6-2	211	FR-HS	Hampton, Ga./Lovejoy
32	Temario Strong	LB	6-0	233	SO-1L	Batesville, Miss./South Panola
33	John-Patrick Sherling	LB	5-11	217	FR-RS	Fairhope, Ala./Fairhope
33	Nathan Vanderburg	RB	5-7	163	FR-RS	Olive Branch, Miss./Desoto Central
34	Nicholas Parker	TE	6-0	250	SR-2L	Batesville, Miss./South Panola
35	D.K. Buford	DB	5-11	200	FR-HS	Oxford, Miss./Lafayette



# OLE MISS REBELS ROSTER

## OLE MISS NUMERICAL ROSTER

No.	Name	Pos.	Ht.	Wt.	Yr.	Hometown/High School
36	Josh Johnson	WR	5-10	180	FR-RS	Belden, Miss./Mooreville
37	Luke Davis	LB	6-2	212	FR-RS	Trussville, Ala./Hewitt-Trussville
38	Deterian Shackelford	LB	6-1	247	GS-3L	Decatur, Ala./Austin
39	Martin Johnson	RB	6-1	187	JR-JC	Preston, Miss./Nanih Waiya/East Central CC
40	Josh Gregory	DB	5-10	195	JR-Sq.	Alpharetta, Ga./Chattahoochee/S. Alabama
41	Billy Busch	LB	5-11	223	SR-1L	St. Louis, Mo./Priory School/Butler
42	Garrald McDowell	DL	6-2	245	FR-HS	Covington, La./Covington
43	Matt Greer	DB	5-10	189	JR-TR	Creve Coeur, Mo./Chaminade College Prep
43	Ty Quick	TE	6-3	257	FR-RS	Terry, Miss./Copiah Academy
44	Charlie Scott	TE	6-0	250	JR-2L	Jackson, Miss./St. Andrew's Episcopal
45	Lavon Hooks	DT	6-3	318	SR-1L	Atlanta, Ga./Meadowcreek
47	John Youngblood	DE	6-3	246	SO-1L	Trussville, Ala./Hewitt-Trussville
48	Carlton Martin	TE	6-1	296	SR-3L	Madison, Miss./Madison Central
50	Sean Rawlings	OL	6-5	285	FR-HS	Madison, Miss./Madison Ridgeland Academy
51	Walker Sturgeon	DE	6-1	240	SR-1L	Horn Lake, Miss./DeSoto Central
52	Davion Johnson	OL	6-4	309	FR-RS	Byhalia, Miss./Byhalia
52	Jack Raborn	LB	6-1	220	FR-HS	Advance, N.C./Mt. Tabor
53	Will Few	LS	6-3	250	SO-Sq.	Augusta, Ga./Aquinas
54	Carlos Thompson	DE	6-5	243	SR-3L	Hollandale, Miss./Simmons
55	Craig Frigo	OL	6-4	301	JR-JC	Bay St. Louis, Miss./St. Stanislaus
56	Woodrow Hamilton	DT	6-3	315	JR-2L	Raleigh, Miss./Raleigh
57	Chadwick Lamar	LS	6-1	187	FR-HS	Oxford, Miss./Oxford
59	Will Denny	LS	5-11	221	SR-3L	Jackson, Miss./Jackson Academy
64	Ben Still	C	6-3	298	JR-2L	Memphis, Tenn./Memphis University School
65	Chase Hughes	OL	6-2	308	SR-3L	Springville, Ala./Springville
68	Justin Bell	OL	6-2	352	JR-2L	Jackson, Miss./Callaway
70	Jordan Sims	OL	6-4	370	FR-HS	Homewood, Ala./Homewood
71	Christian Morris	OL	6-6	335	FR-RS	Memphis, Tenn./Memphis East/UCLA
72	Aaron Morris	OL	6-5	345	JR-3L	Jackson, Miss./Callaway
73	Rod Taylor	OL	6-3	320	FR-HS	Jackson, Miss./Callaway
74	Fahn Cooper	OL	6-5	312	JR-JC	Crystal Lake, Ill./Crystal Lake South
75	Robert Conyers	OL	6-5	295	SO-1L	Miami, Fla./Braddock
76	Daronte Bouldin	OL	6-5	327	FR-RS	Canton, Miss./Canton
77	Talbot Buys	OL	6-8	306	SO-JC	Vicksburg, Miss./Porters Chapel/Holmes CC
77	Tyler Putman	OL	6-5	285	FR-HS	Southaven, Miss./DeSoto Central
78	Laremy Tunsil	OL	6-5	305	SO-1L	Lake City, Fla./Columbia
80	Elliot Markuson	TE	6-0	235	FR-RS	Oxford, Miss./Lafayette
81	Trey Bledsoe	WR	6-1	208	FR-RS	Grenada, Miss./Grenada
81	Johnathan Rattliffe	DB	5-10	175	FR-HS	Birmingham, Ala./Tarrant
82	Dylan Dyer	TE	6-4	227	JR-1L	Flora, Miss./Madison Central/Holmes CC
83	Dayall Harris	WR	6-3	185	FR-HS	Jackson, Miss./Callaway
84	Hunter Thurley	DE	6-4	245	SO-TR	Nashville, Tenn./Christ Presbyterian/Wofford
85	David Gobbell	DB	6-2	170	FR-HS	Savannah, Tenn./Hardin County
85	Alex Weber	WR	6-0	176	FR-HS	Lake City, Fla./Columbia
86	Jordan Gallegos	WR	5-9	170	SO-Sq.	New Albany, Ohio/New Albany
87	Matt Brown	TE	6-3	229	SO-1L	Cordova, Tenn./Harding Academy
88	Cody Core	WR	6-3	196	JR-2L	Auburn, Ala./Auburn
88	John Ratliff	WR	6-1	186	JR-1L	Fort Worth, Texas/Nolan Catholic
89	Taz Zettergren	TE	6-3	225	SO-1L	Senatobia, Miss./Magnolia Heights School
90	Fadol Brown	DE	6-4	280	SO-RS	Charleston, S.C./Burke/FIU
91	Nathan Noble	K	6-3	230	SO-1L	Greenville, Miss./Washington School
92	Andy Pappanastos	K	5-11	189	FR-RS	Montgomery, Ala./Trinity Presbyterian
93	Andrew Fletcher	K	5-8	180	SR-1L	Nashville, Tenn./Montgomery Bell/Louisville
94	Will Gleeson	P	6-3	189	FR-RS	Melbourne, Australia/Viewbank College
94	Issac Gross	DT	6-1	250	JR-2L	Batesville, Miss./South Panola
95	Bryon Bennett	DL	6-2	293	SR-3L	Madison, Miss./Madison Central
97	Gary Wunderlich	K/P	6-0	175	FR-HS	Memphis, Tenn./Memphis University School
98	Grant Warren	P	6-1	207	FR-RS	Pascagoula, Miss./Pascagoula
99	Herbert Moore	DT	6-1	325	FR-RS	Memphis, Tenn./Memphis East

## ALPHABETICAL

No.	Name	Pos.
28	LaKedrick King	DB
57	Chadwick Lamar	LS
24	Keith Lewis	LB
15	Jeremy Liggins	TE
27	Cale Luke	WR
80	Elliot Markuson	TE
48	Carlton Martin	TE
5	I'Tavius Mathers	RB
42	Garrald McDowell	DL
30	A.J. Moore	DB
26	C.J. Moore	DB
16	Collins Moore	WR
99	Herbert Moore	DT
2	Kailo Moore	DB
72	Aaron Morris	OL
71	Christian Morris	OL
4	Denzel Nkemdiche	LB
5	Robert Nkemdiche	DT
91	Nathan Noble	K
11	Markell Pack	WR
92	Andy Pappanastos	K
34	Nicholas Parker	TE
23	Taylor Polk	LB
25	Cody Prewitt	DB
77	Tyler Putman	OL
43	Ty Quick	TE
52	Jack Raborn	LB
88	John Ratliff	WR
81	Johnathan Rattliffe	DB
50	Sean Rawlings	OL
20	Christian Russell	LB
10	Vince Sanders	WR
44	Charlie Scott	TE
38	Deterian Shackelford	LB
2	Tee Shepard	DB
33	John-Patrick Shering	LB
70	Jordan Sims	OL
22	Ray Ray Smith	LB
9	Breeland Speaks	DL
64	Ben Still	C
3	Damore'ea Stringfellow	WR
32	Temario Strong	LB
51	Walker Sturgeon	DE
73	Rod Taylor	OL
54	Carlos Thompson	DE
84	Hunter Thurley	DE
1	Laquon Treadwell	WR
78	Laremy Tunsil	OL
33	Nathan Vanderburg	RB
14	Bo Wallace	QB
6	Jaylen Walton	RB
11	Channing Ward	DE
98	Grant Warren	P
85	Alex Weber	WR
15	Kendarius Webster	DB
22	Jordan Wilkins	RB
97	Gary Wunderlich	K/P
47	John Youngblood	DE
89	Taz Zettergren	TE



## TCU HORNED FROGS 2014 SCHEDULE AND RESULTS

2014 Results		Aug. 30	vs. Samford	W, 48-14	Nov. 8	vs. Kansas State	W, 41-20
Overall	11-1	Sept. 13	vs. Minnesota	W, 30-7	Nov. 15	at Kansas	W, 34-30
Conference	8-1	Sept. 27	at SMU	W, 56-0	Nov. 27	at Texas	W, 48-10
Home	7-0	Oct. 4	vs. Oklahoma	W, 37-33	Dec. 6	vs. Iowa State	W, 58-12
Away	4-1	Oct. 11	at Baylor	L, 61-58			
Neutral	0-0	Oct. 18	vs. Oklahoma State	W, 42-9			
		Oct. 25	vs. Texas Tech	W, 82-27			
		Nov. 1	at. West Virginia	W, 31-30			

## TCU HORNED FROGS COACHING STAFF

### GARY PATTERSON— HEAD COACH



Since taking over the helm of the Horned Frogs in December 2000, Gary Patterson has become synonymous with TCU football and Fort Worth.

Patterson, the Horned Frogs' all-time winningest coach with 131 victories, led TCU to a 2014 Big 12 championship in just its third season in the conference. TCU won its sixth conference championship, in three different leagues, under Patterson.

Patterson has been named the 2014 Walter Camp Football Foundation Coach of the Year as well as the ESPN/Home Depot Coach of the Year. He has now received 12 National Coach of the Year honors in his 14 seasons as TCU's head coach.

With this season's 11-1 record, he has guided the Horned Frogs to the 11-win mark for the eighth time in the last 12 seasons.

Patterson's .744 winning percentage (131-45) ranks fourth among active coaches nationally (minimum 10 years). He is also one of just five active coaches with at least 100 victories at their current school.

The fifth-longest tenured head coach in the nation, Patterson became TCU's career leader in wins with a 56-0 victory over Grambling State in the 2012 season opener, a game that also marked the debut of the new Amon G. Carter Stadium.

The success of the program under his leadership was key in TCU securing an invitation to the Big 12 Conference and the \$164 million rebuild of Amon G. Carter Stadium.

In August 2011, Patterson was named the nation's top coach by Sports Illustrated and ESPN The Magazine.

In leading TCU to back-to-back BCS appearances in the 2009 and 2010 seasons, including a 2011 Rose Bowl championship, Patterson received 10 National Coach of the Year honors in that two-year period.

The Horned Frogs have won eight conference titles with Patterson on staff in addition to posting 10 of the school's 14 10-win seasons. The Horned Frogs have won at least 10 games in nine of the last 13 years.

During his 17 years on campus, including three seasons as defensive coordinator (1998-00), Patterson has seen TCU make 15 bowl appearances. From 2005-08, Patterson led the Horned Frogs to four straight bowl victories for the first time in school history.

In 14 seasons as a head coach, Patterson has coached 173 All-Conference selections, 18 first-team All-Americans, 17 Freshman All-Americans and two Academic All-Americans.

As TCU's head coach, Patterson has had 33 players drafted with 72 in NFL camps.



Jarrett Anderson  
Offensive Line Coach



Dick Bumpas  
Defensive Coordinator/Defensive Line



Rusty Burns  
Outside Receivers Coach



DeMontie Cross  
Linebackers



Sonny Cumbie  
Co-Offensive Coordinator/QBs Coach



Chad Glasgow  
Safeties



Curtis Luper  
Running Backs Coach



Doug Meacham  
Co-Offensive Coordinator/  
Inside WRs



Kenny Perry  
Cornerbacks Coach



Dan Sharp  
Dir. Player Personnel  
Special Teams



# TCU HORNED FROGS ROSTER

ALPHABETICAL		
No.	Name	Pos.
11	Zach Allen	QB
63	Garrett Altman	C
51	Demetrian Altman	DE
41	Jonathan Anderson	LB
40	Philip Armendarez	PK/P
29	George Baltimore	S
78	Ty Barrett	OL
79	Luke Bensuka	OT
71	Matt Boggs	SN
39	Stacy Boyd	TB
2	Trevone Boykin	QB
97	Chris Bradley	DT
86	Bryson Burtnett	TE
19	Cyd Calvin	CB
39	Justus Canfield	WR
94	Josh Carraway	DE
17	Sam Carter	S
23	B.J. Catalon	TB
76	Chad Childs	OG
26	Colten Christensen	TB
91	L.J. Collier	DE
69	Aviante Collins	OT
53	George Cullen	LB
95	Aaron Curry	DT
47	Paul Dawson	LB
24	Ryan DeNucci	PK
9	Josh Doctson	WR
35	Sammy Douglas	LB
25	Michael Downing	S
83	Keaton Duhon	WR
15	Cameron Echols-Luper	WR
52	Trey Elliott	OL
59	Tayo Fabuluje	OT
65	Brady Foltz	OG
27	Travoskey Garrett	CB
87	Griffin Gilbert	WR
20	Deante' Gray	WR
22	Aaron Green	TB
12	Kolby Griffin	CB
75	Ryan Griswold	OT
1	Chris Hackett	S
19	Travis Hanes	WR
92	Bryson Henderson	DT
48	Blake Henningsen	LB
88	Nathan Hernandez	WR
21	Kyle Hicks	TB
28	Geoff Hooker	S
32	Travin Howard	S
55	Joey Hunt	C
96	Chucky Hunter	DT
6	Kenny Iloka	S
31	Ridwan Issahaku	S
16	Ridwan Joeckel	QB
30	Denzel Johnson	S
24	Trevorris Johnson	TB
80	Buck Jones	TE
49	Garrett Kaufman	LB
56	Frank Kee	OG
31	Devin Killpatrick	WR
26	Derrick Kindred	S
6	Bram Kohlhausen	QB
90	Terrell Lathan	DE
99	Tevin Lawson	DT
33	Robert Lewis	CB
7	Kolby Listenbee	WR
61	Michael MacCroy	OG
54	Marcus Mallet	LB

TCU NUMERICAL ROSTER								
No.	Name	Pos.	Ht.	Wt.	Year	Hometown/High School		
1	Chris Hackett	S	6-2	195	JR-2L	Tyler, Texas (John Tyler)		
1	Emanuel Porter	WR	6-4	190	FR-HS	Dallas, Texas (Lincoln)		
2	Trevone Boykin	QB	6-2	205	JR-2L	Dallas, Texas (West Mesquite)		
2	Corry O'Meally	CB	6-0	170	JR-TR	Miami, Fla. (North Miami Beach)/Ellsworth CC		
3	Shaun Nixon	TB	5-10	196	FR-HS	Austin, Texas (Lake Travis)		
4	Jordan Moore	WR	6-3	224	JR-2L	Atlanta, Ga. (Martin Luther King)		
6	Kenny Iloka	S	6-2	209	JR-TR	Sugar Land, Texas (Kempner)/Tyler JC		
6	Bram Kohlhausen	QB	6-2	203	JR-TR	Houston, Texas (Lamar)/Harbor JC/Houston		
7	Kolby Listenbee	WR	6-1	183	JR-2L	Arlington, Texas (Bowie)		
9	Josh Doctson	WR	6-4	190	JR-1L	Mansfield, Texas (Legacy)/Wyoming		
10	Desmon White	WR	5-7	150	FR-HS	DeSoto, Texas (DeSoto)		
11	Zach Allen	QB	6-3	205	FR-RS	Temple, Texas (Temple)		
11	Ranthony Texada	CB	5-10	170	FR-RS	Frisco, Texas (Centennial)		
12	Kolby Griffin	CB	6-0	200	JR-1L	Houston, Texas (St. Plus X)		
12	Foster Sawyer	QB	6-5	220	FR-HS	Fort Worth, Texas (All Saints' Episcopal School)		
13	Ty Slanina	WR	6-0	193	SO-1L	East Bernard, Texas (East Bernard)		
14	Keaton Perry	QB	5-10	185	FR-HS	Arlington, Texas (Bowie)		
14	David Porter	WR	6-0	197	SR-3L	DeSoto, Texas (DeSoto)		
15	Cameron Echols-Luper	WR	6-0	190	SO-1L	Auburn, Ala. (Auburn)		
15	Steve Wesley	S	6-0	175	FR-RS	Arlington, Texas (Bowie)		
16	Matt Joeckel	QB	6-5	237	SR-TR	Arlington, Texas (Arlington)/Texas A&M		
16	Torrance Mosley	CB	5-10	160	FR-HS	Dutchtown, La. (Dutchtown)		
17	Sam Carter	S	6-1	215	SR-3L	New Orleans, La. (Alief Hastings)		
17	Grayson Muehlstein	QB	6-4	210	FR-HS	Decatur, Texas (Decatur)		
18	Nick Orr	CB	5-10	166	FR-HS	DeSoto, Texas (DeSoto)		
19	Cyd Calvin	CB	6-1	175	FR-RS	Frisco, Texas (Centennial)		
19	Travis Hanes	WR	5-11	207	FR-RS	Houston, Texas (Stratford)		
19	Ian Moser	WR	6-2	192	FR-RS	Paradise Valley, Ariz. (Brophy College Preparatory)		
20	Deante' Gray	WR	5-10	175	JR-2L	Houston, Texas (Westside)		
21	Kyle Hicks	TB	5-10	200	FR-RS	Arlington, Texas (Martin)		
22	Aaron Green	TB	5-11	202	JR-1L	San Antonio, Texas (Madison)/Nebraska		
23	B.J. Catalon	TB	5-9	190	JR-2L	Houston, Texas (Westside)		
24	Ryan DeNucci	PK	5-10	195	SR-2L	Austin, Texas (L.C. Anderson)		
24	Trevorris Johnson	TB	5-11	221	FR-RS	Houston, Texas (Alief Taylor)		
25	Michael Downing	S	5-11	175	FR-RS	Alpharetta, Ga. (Alpharetta)		
25	Kevin White	CB	5-10	174	SR-3L	Round Rock, Texas (Stony Point)		
26	Colten Christensen	TB	5-9	185	SR-SQ	Rancho Santa Margarita, Calif. (Catholic)		
26	Derrick Kindred	S	5-10	210	JR-2L	San Antonio, Texas (Wagner)		
27	Travoskey Garrett	CB	6-1	190	JR-1L	Lufkin, Texas (Lufkin)		
28	Geoff Hooker	S	5-10	186	SR-3L	Sherman, Texas (Sherman)		
28	Patrick Zeller	WR	6-0	200	FR-HS	San Diego, Calif. (Del Norte)		
29	George Baltimore	S	6-0	205	FR-RS	Mansfield, Texas (Mansfield)		
30	Denzel Johnson	S	6-2	205	SO-1L	Gainesville, Texas (Gainesville)		
31	Ridwan Issahaku	S	6-1	180	FR-HS	Norcross, Ga. (Norcross)		
31	Devin Killpatrick	WR	5-11	165	JR-SQ	Pearland, Texas (Dawson)/Bacone		
32	Travin Howard	S	6-1	190	FR-HS	Longview, Texas (Longview)		
33	Jaden Oberkrom	PK	6-3	187	JR-2L	Arlington, Texas (Martin)		
33	Robert Lewis	CB	5-11	165	JR-SQ	Atlanta, Ga. (West Forsyth)		
34	Preston Miller	WR	5-9	170	SO-SQ	Dallas, Texas (Highland Park)		
34	Daniel Walsh	WR	6-2	180	SO-SQ	San Diego, Calif. (Cathedral Catholic)		
35	Sammy Douglas	LB	6-3	205	SO-1L	Arlington, Texas (Arlington)		
35	Phil Taylor	WR	5-11	188	JR-SQ	Lake Forest, Calif. (Orange Lutheran)		
36	Rahmaan Patterson	WR	6-1	200	SR-1L	St. Paul, Minn. (DeLaSalle)/Kansas		
37	Ethan Perry	P	6-4	230	JR-2L	Spring Branch, Texas (Smithson Valley)		
38	Connor Osborne	WR	5-10	170	SO-HS	West Monroe, La. (West Monroe)		
39	Stacy Boyd	TB	5-5	150	SO-HS	Fort Worth, Texas (Western Hills)		
39	Justus Canfield	WR	5-11	185	FR-RS	New Brighton, Minn. (Irondale)		
40	Philip Armendarez	PK/P	6-0	195	SR-SQ	Lubbock, Texas (Monterey)		
40	James McFarland	DE	6-3	248	JR-2L	West Monroe, La. (West Monroe)		



## TCU HORNED FROGS ROSTER

### TCU NUMERICAL ROSTER

No.	Name	Pos.	Ht.	Wt.	Year	Hometown/High School
41	Jonathan Anderson	LB	6-3	227	SR-3L	Corpus Christi, Texas (Carroll)
42	Ty Summers	LB	6-2	211	FR-HS	San Antonio, Texas (Reagan)
43	Cliff Murphy	TE	6-4	288	SR-2L	Little Elm, Texas (Little Elm)
44	Paul Whitmill	LB	6-0	230	FR-RS	Bastrop, Texas (Bastrop)
47	Paul Dawson	LB	6-2	230	SR-2L	Dallas, Texas (Skyline)/Trinity Valley CC
48	Blake Henningsen	LB	6-0	205	FR-RS	Houston, Texas (Episcopal)
49	Garrett Kaufman	LB	6-1	225	FR-TR	Bentonville, Ark. (Bentonville)/Northwestern St.
49	Peter Okonofua	LB	6-2	240	SR-SQ	Mansfield, Texas (Mansfield)/Oklahoma St.
50	James Power	SN	6-3	235	SR-1L	Myrtle Beach, S.C. (Myrtle Beach)/Marshall
51	Demetrios Amie	DE	6-4	250	FR-HS	Fort Worth, Texas (Hill School)
51	Austin Schlottman	C	6-6	280	FR-HS	Brenham, Texas (Brenham)
52	Trey Elliott	OL	6-4	275	FR-HS	Dallas, Texas (Jesuit College Prep School)
53	George Cullen	LB	6-0	210	FR-HS	Atlanta, Ga. (Chadwick School)
54	Marcus Mallet	LB	6-1	227	SR-3L	Cleveland, Texas (Cleveland)
55	Joey Hunt	C	6-3	295	JR-2L	El Campo, Texas (El Campo)
56	Frank Kee	OG	6-4	330	JR-TR	Arlington, Texas (Timberview)/Tyler JC
57	Davion Pierson	DT	6-2	305	JR-2L	Oklahoma City, Okla. (Millwood)
58	Patrick Morris	OL	6-3	288	SO-1L	Denton, Texas (Guyer)
59	Tayo Fabuluje	OT	6-7	360	SR-1L	Eules, Texas (Oak Ridge)/BYU
59	Russell Williams	DE	6-4	275	SR-SQ	Eastland, Texas (Eastland)
60	Thomas Walsh	OL	6-3	295	FR-HS	Grapevine, Texas (Heritage)
61	Michael MacCroy	OG	6-1	275	SO-SQ	Houston, Texas (Stratford)
63	Garrett Altman	C	6-4	272	FR-RS	Brenham, Texas (Brenham)
64	Matt Pryor	OG	6-7	350	FR-RS	Long Beach, Calif. (Lakewood)
65	Brady Foltz	OG	6-4	320	JR-2L	Rose Hill, Kan. (Rose Hill)
66	Cole Novak	OT	6-6	240	FR-TR	Georgetown, Texas (Georgetown)/Texas St.
68	Joseph Noteboom	OT	6-5	310	FR-RS	Plano, Texas (Plano)
69	Aviante Collins	OT	6-6	295	JR-2L	Houston, Texas (Willowridge)
70	Lloyd Tunstall	OL	6-4	305	JR-SQ	Santa Clarita, Calif. (Heritage Christian)
71	Matt Boggs	SN	6-0	205	FR-RS	Benton, La. (Benton)
72	Bobby Thompson	OG	6-6	310	JR-1L	Midland, Texas (Midland Christian)
74	Halapoulivaati Vaitai	OT	6-6	308	JR-2L	Haltom, Texas (Haltom)
75	Ryan Griswold	OT	6-5	255	FR-HS	Pearland, Texas (Pearland)
76	Chad Childs	OG	6-5	300	SO-SQ	La Grange, Texas (La Grange)
77	Jamelle Naff	OG	6-4	325	JR-1L	Del City, Okla. (Del City)
78	Ty Barrett	OL	6-5	316	FR-HS	Dallas, Texas (Skyline)
79	Luke Benuska	OT	6-6	295	JR-1L	San Marino, Calif. (San Marino)
80	Buck Jones	TE	6-4	255	SO-1L	Matthews, N.C. (Weddington)
81	Ja'Juan Story	WR	6-4	208	JR-1L	Brooksville, Fla. (North Coast Technical)/Florida
82	Charlie Reid	WR	6-4	255	FR-RS	Fort Worth, Texas (All Saints' Episcopal School)
83	Keaton Duhon	WR	6-0	180	FR-HS	Southlake, Texas (Carroll)
84	Dominic Merka	TE	6-4	230	JR-2L	Crosby, Texas (Crosby)
85	Corey McBride	WR	6-10	180	FR-HS	Dutchtown, La. (Dutchtown)
86	Bryson Burnett	TE	6-5	237	FR-RS	Springtown, Texas (Springtown)
87	Griffin Gilbert	WR	6-5	220	SO-1L	Austin, Texas (Lake Travis HS)
88	Nathan Hernandez	WR	5-8	160	SO-HS	Coppell, Texas (Coppell)
89	Andre Petties-Wilson	WR	6-1	195	FR-HS	San Diego, Calif. (Mission Bay)
90	Terrell Lathan	DE	6-5	280	JR-2L	Chatham, La. (West Monroe)
91	L.J. Collier	DE	6-4	245	FR-HS	Munday, Texas (Munday)
92	Bryson Henderson	DT	6-4	245	FR-RS	Mansfield, Texas (Summit)
93	Michael Mosharrafa	DE	6-3	210	SO-SQ	Phoenix, Ariz. (Brophy College Prep)
93	Mike Tuaua	DE	6-3	253	JR-1L	Rohnert Park, Calif. (Rancho Cotate)
94	Josh Carraway	DE	6-4	250	SO-1L	Flower Mound, Texas (Marcus)
95	Aaron Curry	DT	6-1	280	JR-TR	Keller, Texas (Fossil Ridge)/Nebraska
96	Chucky Hunter	DT	6-1	300	SR-3L	West Monroe, La. (West Monroe)
97	Chris Bradley	DT	6-2	255	FR-HS	Shreveport, La. (Evangel Christian Academy)
98	Casey McDermott Vai	DE	6-4	250	FR-HS	Raytown, Mo. (Raytown South)
99	Tevin Lawson	DT	6-4	280	SO-1L	Denham Springs, La. (Denham Springs)

### ALPHABETICAL

No.	Name	Pos.
85	Corey McBride	WR
98	Casey McDermott Vai	DE
40	James McFarland	DE
84	Dominic Merka	TE
34	Preston Miller	WR
4	Jordan Moore	WR
58	Patrick Morris	OL
19	Ian Moser	WR
16	Torrance Mosley	CB
93	Michael Mosharrafa	DE
17	Grayson Muehlstein	QB
43	Cliff Murphy	TE
77	Jamelle Naff	OG
3	Shaun Nixon	TB
68	Joseph Noteboom	OT
66	Cole Novak	OT
33	Jaden Oberkrom	PK
49	Peter Okonofua	LB
2	Corry O'Meally	CB
18	Nick Orr	CB
38	Connor Osborne	WR
36	Rahmaan Patterson	WR
37	Ethan Perry P	
14	Keaton Perry	QB
89	Andre Petties-Wilson	WR
57	Davion Pierson	DT
14	David Porter	WR
1	Emanuel Porter	WR
50	James Power	SN
64	Matt Pryor	OG
82	Charlie Reid	WR
12	Foster Sawyer	QB
51	Austin Schlottman	C
13	Ty Slanina	WR
81	Ju'Juan Story	WR
42	Ty Summers	LB
35	Phil Taylor	WR
11	Ranthoni Texada	CB
72	Bobby Thompson	OG
93	Mike Tuaua	DE
70	Lloyd Tunstall	OL
74	Halapoulivaati Vaitai	OT
34	Daniel Walsh	WR
60	Thomas Walsh	OL
15	Steve Wesley	S
10	Desmon White	WR
25	Kevin White	CB
44	Paul Whitmill	LB
59	Russell Williams	DE
28	Patrick Zeller	WR



## CHICK-FIL-A PEACH BOWL FAN POLL



**YOUR VOTE. YOUR VOICE.**

The Chick-fil-A Peach Bowl Fan Poll gave fans the opportunity during the season to act as a member of a voting panel and use their own criteria to select college football's top 25 teams each week.

### 2014 FINAL RESULTS

- |                      |                  |
|----------------------|------------------|
| 1. Alabama           | 14. UCLA         |
| 2. Oregon            | 15. Arizona      |
| 3. TCU               | 16. Missouri     |
| 4. Florida State     | 17. Clemson      |
| 5. Ohio State        | 18. Auburn       |
| 6. Baylor            | 19. Boise State  |
| 7. Ole Miss          | 20. Wisconsin    |
| 8. Mississippi State | 21. LSU          |
| 9. Michigan State    | 22. Louisville   |
| 10. Arizona          | 23. Utah         |
| 11. Kansas State     | 24. Minnesota    |
| 12. Georgia Tech     | 25. Southern Cal |
| 13. Georgia          |                  |

## NATIONAL POLLS

<u>Associated Press Top 25</u>	<u>USA Today Coaches Poll</u>	<u>College Football Playoff Top 25</u>
1. Alabama	1. Alabama	1. Alabama
2. Florida State	2. Florida State	2. Oregon
3. Oregon	3. Oregon	3. Florida State
4. Baylor	4. Ohio State	4. Ohio State
5. Ohio State	5. Baylor	5. Baylor
6. TCU	6. TCU	6. TCU
7. Michigan State	7. Michigan State	7. Mississippi State
8. Mississippi State	8. Mississippi State	8. Michigan State
9. Ole Miss	9. Georgia Tech	9. Ole Miss
10. Georgia Tech	10. Kansas State	10. Arizona
11. Kansas State	11. Arizona	11. Kansas State
12. Arizona	12. Ole Miss	12. Georgia Tech
13. Georgia	13. Georgia	13. Georgia
14. UCLA	14. Missouri	14. UCLA
15. Arizona State	15. UCLA	15. Arizona State
16. Missouri	16. Arizona State	16. Missouri
17. Wisconsin	17. Wisconsin	17. Clemson
18. Clemson	18. Clemson	18. Wisconsin
19. Auburn	19. Auburn	19. Auburn
20. Louisville	20. Louisville	20. Boise State
21. Boise State	21. Boise State	21. Louisville
22. LSU	22. Nebraska	22. Utah
23. Utah	23. LSU	23. LSU
24. USC	24. Oklahoma	24. Southern California
25. Nebraska	25. Utah	25. Minnesota



## CHICK-FIL-A PEACH BOWL RECORD BOOK

### GAME RECORDS (BOTH TEAMS)

<b>Attendance: 75,406</b> Georgia vs. Virginia Tech (2006)	<b>Fewest Net Yards Rushing: 113</b> Georgia 71 vs. Virginia Tech 42 (2006)	<b>Fewest Yards Total Offense: 389</b> Georgia 200 vs. Virginia Tech 189 (2006)	<b>Fewest Fumbles: 1</b> Miami 0 vs. LSU 1 (2005), Clemson 1 vs. Auburn 0 (2007), Texas A&M 0 vs. Duke 1 (2013)
<b>Most Points Scored: 100</b> Texas A&M 52 vs. Duke 48 (2013)	<b>Most Passes Completed:</b> Texas A&M 30 vs. Duke 29 (2013)	<b>Most Penalties: 29</b> Mississippi State 21 vs. Clemson, 8 (1999)	<b>Fewest Fumbles Lost: 0</b> Miami 0 vs. LSU 0 (2005), Clemson 0 vs. Auburn 0 (2007), Texas A&M 0 vs. Duke 0 (2013)
<b>Fewest Points Scored: 12</b> Vanderbilt 6 vs. Texas Tech 6 (1974)	<b>Fewest Passes Completed: 20</b> Clemson 6 vs. LSU 14 (1996)	<b>Most Yards Penalized: 270</b> Mississippi State 188 vs. Clemson, 82 (1999)	
<b>Most First Downs: 59</b> Texas A&M 30 vs. Duke 29 (2013)	<b>Most Net Yards Passing: 809</b> Duke 427 vs. Texas A&M 382 (2013)	<b>Most Fumbles: 12</b> North Carolina State 8 vs. Iowa 4 (1988)	
<b>Fewest First Downs: 18</b> Georgia 9 vs. Virginia Tech 9 (2006)	<b>Fewest Net Yards Passing: 40</b> North Carolina 24 vs. Kentucky 16 (1976)	<b>Most Fumbles Lost: 8</b> North Carolina State 5 vs. Iowa 3 (1988)	
<b>Most Net Yards Rushing: 446</b> Texas Tech 306 vs. Vanderbilt 140 (1974)	<b>Most Yards Total Offense: 1202</b> Texas A&M 541 vs. Duke 661 (2013)		

### GAME RECORDS (ONE TEAM)

<b>Largest Victory Margin: 37</b> LSU 40 vs. Miami 3 (2005)	<b>Most Total First Downs: 32</b> Clemson (2012)	<b>Most Interceptions Thrown: 5</b> Clemson (1999)	<b>Fewest Net Yards Total Offense: 105</b> Florida (1981)
Points Scored: 49 North Carolina State (1972)	<b>Fewest Total First Downs: 4</b> Clemson (1997)	<b>Most Net Yards Passing: 428</b> Iowa (1988)	<b>Most Passes Intercepted: 5</b> Mississippi State (1999)
<b>Fewest Points Scored: 0</b> North Carolina (1976)	<b>Most Rushing Attempts: 79</b> West Virginia (1969)	<b>Most Touchdowns Passing: 4</b> East Carolina (1991)	<b>Most Times Penalized: 21</b> Mississippi State (1999)
<b>Most Points By Losing Team: 34</b> North Carolina State (1991)	<b>Most Net Yards Rushing: 356</b> West Virginia (1969)	<b>Fewest Passes Attempted: 2</b> West Virginia (1969)	<b>Most Yards Penalized: 188</b> Mississippi State (1999)
<b>Most Points in a Quarter: 28</b> Mississippi (Second Quarter, 1971), LSU (Second Quarter, 2008)	<b>Most Touchdowns Rushing: 6</b> Arizona State (1970)	<b>Fewest Passes Completed: 1</b> West Virginia (1969)	<b>Fewest Times Penalized: 1</b> Clemson (2007)
<b>Most Points in a Half: 38</b> Mississippi (First Half, 1971)	<b>Fewest Rushing Attempts: 19</b> Iowa (1988)	<b>Fewest Net Yards Passing: 3</b> West Virginia (1969)	<b>Most Fumbles: 8</b> North Carolina State (1988)
<b>Most First Downs Rushing: 19</b> West Virginia (1969)	<b>Fewest Net Yards Rushing: 5</b> Tennessee (2009)	<b>Most Offensive Plays: 100</b> Clemson (2012)	<b>Most Fumbles Lost: 5</b> North Carolina State (1988)
<b>Most First Downs Passing: 20</b> Tennessee (2004), Clemson (2012)	<b>Most Pass Attempts: 59</b> Georgia (1995)	<b>Most Net Yards Total Offense: 535</b> North Carolina State (1972)	
<b>Most First Downs by Penalty: 6</b> Clemson (2004)	<b>Most Passes Completed: 38</b> Illinois (1985)	<b>Fewest Offensive Plays: 48</b> LSU (2012)	

### INDIVIDUAL RECORDS

<b>Most Points Scored: 18</b> Don McCauley, North Carolina (1970) Bob Thomas, Arizona State (1970) Rob Healy, Georgia Tech (1971) Stan Fritts, North Carolina State (1972) Rod Stewart, Kentucky (1976) Trent Green, Indiana (1990) Charles Scott, LSU (2008) Travis Labhart, Texas A&M (2013)	<b>Most Conversions Kicking: 7</b> Ron Sewell, North Carolina State (1972), Josh Lambo, Texas A&M (2013)	<b>Longest Run From Scrimmage: 83</b> C.J. Spiller, Clemson (2007)	<b>Most Net Yards Passing: 428</b> Chuck Hartlieb, Iowa (1988)
<b>Most Touchdowns Scored: 3</b> Don McCauley, North Carolina (1970) Rob Thomas, Arizona State (1970) Rob Healy, Georgia Tech (1971) Stan Fritts, North Carolina State (1972) Rod Stewart, Kentucky (1976) Trent Green, Indiana (1990) Charles Scott, LSU (2008) Travis Labhart, Texas A&M (2013)	<b>Most Field Goals Scored: 4</b> Paul Woodside, West Virginia (1981)	<b>Most Touchdowns Rushing: 3</b> Don McCauley, North Carolina (1970) Bob Thomas, Arizona State (1970) Rob Healy, Georgia Tech (1971) Stan Fritts, North Carolina State (1972) Rod Stewart, Kentucky (1976) Trent Green, Indiana (1990) Charles Scott, LSU (2008)	<b>Longest Completed Pass: 82</b> Mike Groh to Demetrius Allen, Virginia (1995)
	<b>Longest Field Goal: 53</b> Colt David, LSU (2008)	<b>Most Passes Attempted: 59</b> Hines Ward, Georgia (1995)	<b>Most Interceptions Thrown: 4</b> Chuck Hartlieb, Iowa (1988)
	<b>Most Carries in Game: 36</b> Don McCauley, North Carolina (1970)	<b>Most Passes Completed: 38</b> Jack Trudeau, Illinois (1985)	<b>Most Touchdown Passes: 4</b> Jeff Blake, East Carolina (1991)



## CHICK-FIL-A PEACH BOWL GAME HISTORY

<u>Date</u>	<u>Schools/Score</u>	<u>Payout</u>	<u>Attendance</u>
Dec. 31, 2013	Duke 48, Texas A&M 52	\$7.4 million	67,946
Dec. 31, 2012	Clemson 25, LSU 24	\$7.1 million	68,027
Dec. 31, 2011	Auburn 43, Virginia 24	\$6.9 million	72,919
Dec. 31, 2010	Florida State 26, South Carolina 17	\$6.7 million	72,217
Dec. 31, 2009	Virginia Tech 37, Tennessee 14	\$6.2 million	73,777
Dec. 31, 2008	LSU 38, Georgia Tech 3	\$6.01 million	71,423
Dec. 31, 2007	Auburn 23, Clemson 20 (OT)	\$5.83 million	74,413
Dec. 30, 2006	Georgia 31, Virginia Tech 24	\$5.65 million	75,406
Dec. 30, 2005	LSU 40, Miami 3	\$4.8 million	65,620
Dec. 31, 2004	Miami 27, Florida 10	\$4.6 million	69,322
Jan. 2, 2004	Clemson 27, Tennessee 14	\$4.4 million	75,125
Dec. 31, 2002	Maryland 30, Tennessee 3	\$4.2 million	68,330
Dec. 31, 2001	North Carolina 16, Auburn 10	\$3.8 million	71,827
Dec. 29, 2000	LSU 28, Georgia Tech 14	\$3.6 million	73,614
Dec. 30, 1999	Mississippi State 17, Clemson 7	\$3.4 million	73,315
Dec. 31, 1998	Georgia 35, Virginia 33	\$3.2 million	72,876
Jan. 2, 1998	Auburn 21, Clemson 17	\$3 million	71,212
Dec. 28, 1996	LSU 10, Clemson 7	\$2.4 million	63,622
Dec. 30, 1995	Virginia 34, Georgia 27	\$2.6 million	70,284
Jan. 1, 1995	N.C. State 28, Miss. State 24	\$2.26 million	64,902
Dec. 31, 1993	Clemson 14, Kentucky 13	\$2.26 million	63,416
Jan. 2, 1993	North Carolina 21, Miss. State 17	\$2.26 million	69,125
Jan. 1, 1992	East Carolina 37, N.C. State 34	\$1.8 million	59,322
Dec. 29, 1990	Auburn 27, Indiana 23	\$1.6 million	38,962
Dec. 30, 1989	Syracuse 19, Georgia 18	\$1.6 million	44,911
Dec. 31, 1988	N.C. State 28, Iowa 23	\$1.6 million	44,635
Jan. 2, 1988	Tennessee 27, Indiana 22	\$1.6 million	58,737
Dec. 31, 1986	Virginia Tech 25, N.C. State 24	\$1.2 million	53,668
Dec. 31, 1985	Army 31, Illinois 29	\$972,974	29,857
Dec. 31, 1984	Virginia 27, Purdue 24	\$1.9 million	45,983
Dec. 30, 1983	Florida St. 28, North Carolina 3	\$1.7 million	40,231
Dec. 31, 1982	Iowa 28, Tennessee 22	\$1.8 million	59,300
Dec. 31, 1981	West Virginia 26, Florida 6	\$1.5 million	50,441
Jan. 2, 1981	Miami (Fla.) 20, Virginia Tech 10	\$1.3 million	49,252
Dec. 31, 1979	Baylor 24, Clemson 18	\$1.3 million	58,933
Dec. 25, 1978	Purdue 41, Georgia Tech 21	\$691,122	33,947
Dec. 31, 1977	N.C. State 24, Iowa State 14	\$691,904	43,063
Dec. 31, 1976	Kentucky 21, North Carolina 0	\$894,490	57,507
Dec. 31, 1975	West Virginia 13, N.C. State 10	\$640,498	51,120
Dec. 28, 1974	Texas Tech 6, Vanderbilt 6	\$500,366	34,188
Dec. 28, 1973	Georgia 17, Maryland 16	\$547,982	41,313
Dec. 29, 1972	N.C. State 49, West Virginia 13	\$663,190	51,413
Dec. 30, 1971	Mississippi 41, Georgia Tech 18	\$507,576	38,599
Dec. 30, 1970	Arizona St. 48, North Carolina 26	\$578,148	52,692
Dec. 30, 1969	W. Virginia 14, South Carolina 3	\$545,878	53,969
Dec. 30, 1968	LSU 31, Florida State 27	\$460,000	35,206



## CHICK-FIL-A PEACH BOWL MVPs

1968	<b>Mike Hillman</b> <b>Buddy Millican</b>	QB DE	LSU LSU	Offense Defense	1992	<b>Natrone Means</b> <b>Bracey Walker</b>	RB DB	North Carolina North Carolina	Offense Defense
1969	<b>Ed Williams</b> <b>Carl Crennel</b>	RB NG	West Virginia West Virginia	Offense Defense	1993	<b>Emory Smith</b> <b>Brentson Buckner</b> <b>Pookie Jones</b> <b>Zane Beehn</b>	RB DE QB LB	Clemson Clemson Kentucky Kentucky	Offense Defense Offense Defense
1970	<b>Monroe Eley</b> <b>Junior Ah You</b>	RB DE	Arizona State Arizona State	Offense Defense	1994	<b>Tremayne Stephens</b> <b>Carl Reeves</b> <b>Damien Covington</b> <b>Tim Rogers</b> <b>Larry Williams</b>	RB DT ILB K DL	North Carolina State North Carolina State North Carolina State Mississippi State Mississippi State	Offense Defense Defense Offense Defense
1971	<b>Norris Weese</b> <b>Crowell Armstrong</b>	QB LB	Mississippi Mississippi	Offense Defense	1995	<b>Tiki Barber</b> <b>Skeet Jones</b> <b>Hines Ward</b> <b>Whit Marshall</b>	RB LB QB MLB	Virginia Virginia Georgia Georgia	Offense Defense Offense Defense
1972	<b>Dave Buckley</b> <b>George Bell</b>	QB DT	North Carolina State North Carolina State	Offense Defense	1996	<b>Herb Tyler</b> <b>Anthony McFarland</b> <b>Raymond Priestler</b> <b>Trevor Pryce</b>	QB DL DE LB	LSU LSU Clemson Clemson	Offense Defense Offense Defense
1973	<b>Louis Carter</b> <b>Sylvester Bolen</b>	RB LB	Maryland Georgia	Offense Defense	1997	<b>Dameyune Craig</b> <b>Takeo Spikes</b> <b>Raymond Priestler</b> <b>Anthony Simmons</b>	QB LB RB LB	Auburn Auburn Clemson Clemson	Offense Defense Offense Defense
1974	<b>Larry Isaac</b> <b>Dennis Harrison</b>	RB DT	Texas Tech Vanderbilt	Offense Defense	1998	<b>Olandis Gary</b> <b>Champ Bailey</b> <b>Aaron Brooks</b> <b>Wali Rainer</b>	QB CB QB LB	Georgia Georgia Virginia Virginia	Offense Defense Offense Defense
1975	<b>Dan Kendra</b> <b>Ray Marshall</b>	QB LB	West Virginia West Virginia	Offense Defense	1999	<b>Wayne Madkin</b> <b>Keith Adams</b>	QB LB	Mississippi State Clemson	Offense Defense
1976	<b>Rod Stewart</b> <b>Mike Martin</b>	RB LB	Kentucky Kentucky	Offense Defense	2000	<b>Rohan Davey</b> <b>Bradie James</b>	QB LB	LSU LSU	Offense Defense
1977	<b>Johnny Evans</b> <b>Richard Carter</b>	QB DB	North Carolina State North Carolina State	Offense Defense	2001	<b>Ronald Curry</b> <b>Ryan Sims</b>	QB DT	North Carolina North Carolina	Offense Defense
1978	<b>Mark Herman</b> <b>Calvin Clark</b>	QB DT	Purdue Purdue	Offense Defense	2002	<b>Scott McBrien</b>  <b>E.J. Henderson</b>	QB  LB	Maryland  Maryland	Offense  Defense
1979	<b>Mike Brannon</b> <b>Andrew Melontree</b>	QB DE	Baylor Baylor	Offense Defense	2004	<b>Chad Jasmin</b> <b>Leroy Hill</b>	TB LB	Clemson Clemson	Offense Defense
1980	<b>Jim Kelly</b> <b>Jim Burt</b>	QB NG	Miami Miami	Offense Defense	2004	<b>Roscoe Parrish</b> <b>Devin Hester</b>	WR DB/PR	Miami Miami	Offense Defense
1981	<b>Mickey Walczak</b> <b>Don Stemple</b>	RB DB	West Virginia West Virginia	Offense Defense	2005	<b>Matt Flynn</b> <b>Melvin Oliver</b>	QB DE	LSU LSU	Offense Defense
1982	<b>Chuck Long</b> <b>Clay Uhlenhake</b>	QB DT	Iowa Iowa	Offense Defense	2006	<b>Matthew Stafford</b> <b>Tony Taylor</b>	QB LB	Georgia Georgia	Offense Defense
1983	<b>Eric Thomas</b> <b>Alphonso Carreker</b>	QB DT	Florida State Florida State	Offense Defense	2007	<b>C.J. Spiller</b> <b>Pat Sims</b>	RB DT	Clemson Auburn	Offense Defense
1984	<b>Howard Petty</b> <b>Ray Daly</b>	RB DB	Virginia Virginia	Offense Defense	2008	<b>Jordan Jefferson</b> <b>Perry Riley</b>	QB LB	LSU LSU	Offense Defense
1985	<b>Rob Healy</b> <b>Peel Chronister</b>	QB DB	Army Army	Offense Defense	2009	<b>Ryan Williams</b> <b>Cody Grimm</b>	RB LB	Virginia Tech Virginia Tech	Offense Defense
1986	<b>Erik Kramer</b> <b>Derrick Taylor</b>	QB CB	North Carolina State North Carolina State	Offense Defense	2010	<b>Chris Thompson</b> <b>Greg Reid</b>	RB CB	Florida State Florida State	Offense Defense
1987	<b>Reggie Cobb</b> <b>Van Walters</b>	RB OLB	Tennessee Indiana	Offense Defense	2011	<b>Onterio McCalebb</b> <b>Chris Davis</b>	RB CB	Auburn Auburn	Offense Defense
1988	<b>Shane Montgomery</b> <b>Michael Brooks</b>	QB FS	North Carolina State North Carolina State	Offense Defense	2012	<b>Tajh Boyd</b> <b>Kevin Minter</b>	QB LB	Clemson LSU	Offense Defense
1989	<b>Michael Owens</b> <b>Terry Wooden</b> <b>Rodney Hampton</b> <b>Morris Lewis</b>	RB LB TB LB	Syracuse Syracuse Georgia Georgia	Offense Defense Offense Defense	2013	<b>Johnny Manziel</b> <b>Tony Hurd Jr.</b>	QB DB	Texas A&M Texas A&M	Offense Defense
1990	<b>Stan White</b> <b>Darryl Crawford</b> <b>Trent Green</b> <b>Mike Dumas</b>	QB LB QB FS	Auburn Auburn Indiana Indiana	Offense Defense Offense Defense					
1991	<b>Jeff Blake</b> <b>Robert Jones</b> <b>Terry Jordan</b> <b>Billy Ray Haynes</b>	QB LB QB LB	East Carolina East Carolina North Carolina State North Carolina State	Offense Defense Offense Defense					



## YEAR-BY-YEAR SUMMARIES

1968 LSU 31, Florida State 27						
LSU's Mike Hillman passed for 229 yards and two touchdowns to lead the Tigers to a comeback win in the first Peach Bowl Classic. The Seminoles jumped to a 13-0 first half lead in cold, rain-swept Grant Field before LSU unleashed its attack which featured Hillman's TD passes. Bill Cappelman tossed three touchdown passes for the Seminoles.						
Louisiana State	0	10	14	7	--	31
Florida State	7	6	0	14	--	27

1969 West Virginia 14, South Carolina 3						
Ed Williams of West Virginia rushed for 208 yards as the Mountaineers sloshed to a win. West Virginia completed only one pass in two attempts but rushed for 356 yards in the driving rain at Grant Field. The Gamecocks had a chance to win with a first and goal from the seven in the fourth quarter and the score 7-3, but West Virginia held off the threat and added the clinching score with only 23 seconds left in the game.						
West Virginia	7	0	0	7	--	14
South Carolina	0	3	0	0	--	3

1970 Arizona State 48, North Carolina 26						
Undefeated Arizona State outscored North Carolina 27-0 in the second half to capture the win at Grant Field. The Sun Devils churned out 451 yards, 306 on the ground, in the swirling snow while holding the TarHeels to 254. Monroe Eley rushed for 173 yards and two touchdowns and Bob Thomas added 124 yards and three touchdowns for the Sun Devils. Don McCauley led North Carolina, which scored all 26 of its points in the second quarter, with 143 yards rushing and three touchdowns.						
Arizona State	7	14	20	7	--	48
North Carolina	0	26	0	0	-	26

1971 Mississippi 41, Georgia Tech 18						
Mississippi erupted for 38 first-half points in the rain and mud of Atlanta-Fulton County Stadium en route to an easy win. Taking advantage of five Tech turnovers, the Rebels scored 28 second quarter points to lead at the half. Greg Ainsworth collected 118 yards rushing, while Norris Weese passed for 116 yards and rushed for 36 more to lead the Rebel attack. Rob Healy rushed for three touchdowns for the Yellow Jackets.						
Mississippi	10	28	0	3	--	41
Georgia Tech	0	6	6	6	--	18

1972 NC State 49, West Virginia 13						
In the first precipitation-free Peach Bowl, NC State took advantage of the ideal weather conditions to roll to an upset win. The Wolfpack blasted the Mountaineers 35-0 in the second half. Led by QB David Buckley, NC State chalked up 535 yards, including 337 on the ground. West Virginia ran for only 91 yards.						
NC State	7	7	21	14	--	49
West Virginia	13	0	0	0	-	13

1973 Georgia 17, Maryland 16						
Georgia defeated Maryland behind its defense which gave up 461 yards but only one touchdown. Georgia stopped the Terps five times inside the Bulldog 15-yard line, allowing Maryland's only touchdown on a 68-yard bomb. Georgia broke a 10-10 tie on an eight yard drive following a Maryland fumble and held on for the win. Maryland's Steve Mike-Mayer kicked three field goals.						
Georgia	10	7	0	0	--	17
Maryland	0	10	0	6	--	16



## YEAR-BY-YEAR SUMMARIES

1980 Miami 20, Virginia Tech 10						
<p>Jim Kelly passed for 179 yards and the stingy Miami defense limited Virginia Tech to 10 points as the Hurricanes upended the Hokies. Miami jumped to a 14-0 lead then used two Danny Miller field goals to clinch the win. Cyrus Lawrence led Virginia Tech with 134 yards on the ground, 105 in the first half.</p>						
Miami	7	7	3	3	--	20
Virginia Tech	0	3	7	0	--	10

1981 West Virginia 26, Florida 6						
<p>West Virginia stifled Florida's offense in a decisive victory, becoming the first team to win three Peach Bowls. The Gators were held to minus-30 yards rushing and 135 yards passing in cold, rain-soaked Atlanta-Fulton County Stadium. Paul Woodside kicked four field goals to lead the Mountaineers.</p>						
West Virginia	7	9	3	7	--	26
Florida	0	0	0	6	--	6

1982 Iowa 28, Tennessee 22						
<p>Iowa scored 21 second quarter points to open a 21-7 lead and held on to win before 50,134 fans. Iowa QB Chuck Long threw for 304 yards and three touchdowns to spark the Hawkeyes and break the previous Peach Bowl passing mark with 220 yards in the first half. Tennessee was led by RB Chuck Coleman who gained 103 yards on 11 carries.</p>						
Iowa	0	21	7	0	--	28
Tennessee	7	0	12	3	--	22

1983 Florida State 28, North Carolina 3						
<p>Florida State jumped to a quick 21-0 lead and relied on powerful defense to win. North Carolina managed only 32 yards on the ground, while the Seminoles rolled up 265 yards. Eric Thomas, making his first collegiate start, threw two touchdown passes to Weegie Thompson and ran for a third to lead Florida State. The Tar Heels suffered their third Peach Bowl defeat in three appearances.</p>						
Florida State	14	7	0	7	--	28
North Carolina	0	0	0	3	--	3

1984 Virginia 27, Purdue 24						
<p>Virginia, playing in its first bowl game ever, got two fourth quarter field goals from Kenny Stadlin to complete a rally from a double-digit halftime deficit and upend Purdue. Cavalier QB Don Majkowski passed for one score and ran for another, while RB Don Howard Petty rushed for 116 yards and one TD. Boilermaker QB Jim Everett passed for three TDs, but Purdue was held scoreless in the second half.</p>						
Virginia	7	7	7	6	--	27
Purdue	10	14	0	0	--	24

1985 Army 31, Illinois 29						
<p>In a game which saw 16 Peach Bowl records broken or tied, Army defeated Illinois in one of the most exciting games in the Bowl's history. The two teams combined for a Peach Bowl record 863 yards of total offense. Army's 291 yards on the ground, including 107 by Cadet QB Rob Healy, proved to be worth more than Illinois's 401 yards through the air by future NFL QB Jack Trudeau. The Fighting Illini's two-point conversion attempt to tie the game with 34 seconds left failed.</p>						
Army	7	14	7	3	--	31
Illinois	3	13	7	6	--	29





## YEAR-BY-YEAR SUMMARIES

1974 Vanderbilt 6, Texas Tech 6						
<p>Vanderbilt, making its first bowl appearance in 19 years, locked horns with Texas Tech in a defensive struggle that ended in a tie. Vanderbilt's Mark Adams and Tech's Brian Hall each booted two field goals to account for the scoring. The Red Raiders failed on a first and goal from the one-yard line just before halftime and missed another chance when Dennis Harrison blocked a 33-yard fourth quarter field goal attempt.</p>						
Vanderbilt	0	3	0	3	--	6
Texas Tech	0	3	3	--		6

1975 West Virginia 13, NC State 10						
<p>West Virginia avenged its 1972 Peach Bowl loss to NC State with a come-from-behind victory. The Mountaineers trailed 10-6 in the fourth quarter, when Don Kendra hit Scott McDonald on a 50-yard touchdown pass. Kendra also completed a 39-yard pass to Artie Owens with four seconds left in the first half for West Virginia's other score.</p>						
West Virginia	0	6	0	7	--	13
North Carolina State	7	3	0	0	--	10

1976 Kentucky 21, North Carolina 0						
<p>Led by a bruising defense that limited North Carolina to 108 yards of total offense, Kentucky shut out the Tar Heels. The Wildcats, making their first bowl appearance since 1951, were led by FB Rod Stewart's 104 rush yards and three touchdowns. A sellout crowd of 54,132 attended the game despite a temperature of 28 degrees.</p>						
Kentucky	0	0	7	14	--	21
North Carolina	0	0	0	0	--	0

1977 North Carolina State 24, Iowa State 14						
<p>N.C. State, paced by QB Johnny Evans and TB Ted Brown, jumped to 21-0 halftime lead and held on for the victory. Evans passed for 202 yards and rushed for 62 more, while Brown notched his second 100-yard Peach Bowl game with 114 yards on the ground. The win, before 36,733 fans, gave the Wolfpack two wins in three Peach Bowl appearances.</p>						
North Carolina State	7	14	0	3	--	24
Iowa State	0	0	0	14	--	14

1978 Purdue 41, Georgia Tech 21						
<p>Purdue stormed to a 34-7 halftime lead and went on to defeat Georgia Tech, handing the Yellow Jackets their second Peach Bowl loss. Purdue limited Tech to zero yards of total offense in the decisive first half. The Jackets, playing without All-American RB Eddie Lee Ivery, finished with only 12 yards rushing for the game. Mark Herrmann threw two touchdown passes for the Boilermakers and rushed for another.</p>						
Purdue	21	13	0	7	--	41
Georgia Tech	0	7	0	14	--	21

1979 Baylor 24, Clemson 18						
<p>Freshman QB Mike Brannon threw two touchdown passes and Baylor blocked two Clemson punts to lead the Bears to victory before 57,321 fans. The Tigers, led by Billy Lott's 204 passing yards, were stopped late in the game following an onside kick recovery as Baylor held on for the win.</p>						
Baylor	0	14	10	0	--	24
Clemson	7	0	3	8	--	18



## YEAR-BY-YEAR SUMMARIES

1986 Virginia 25, North Carolina State 24						
Driving 57 yards in the last 1:53, Virginia Tech nipped N.C. State 25-24 on Chris Kinzer's 40-yard field goal as time expired. A crowd of 53,668 watched the Hokies and the Wolfpack battle in sun-drenched Atlanta-Fulton County Stadium. N.C. State went ahead 24-22 withover seven minutes remaining before the Hokies' decisive march.						
Virginia Tech	10	0	6	9	--	25
North Carolina State	7	14	0	3	--	24

1987 Tennessee 27, Indiana 22						
Playing before the largest crowd (58,737) in Peach Bowl history and the game's second consecutive sellout, Tennessee's came from behind to defeat Big-Ten runner-up Indiana, 27-22. Reggie Cobb scored the Volunteers' decisive touchdown on a nine-yard fourth-quarter run.						
Tennessee	14	7	0	6	--	27
Indiana	3	7	6	6	--	22

1988 North Carolina State 28, Iowa 23						
A 75-yard Shane Montgomery touchdown pass fueled a 21-point second quarter as North Carolina State held on to defeat Iowa. The combatants combined to shatter 18 Peach Bowl records as the Hawkeyes battled back from an early hole but fell shy of the win. Iowa quarterback Chuck Hartlieb threw for 428 yards in the defeat.						
North Carolina State	7	21	0	0	--	28
Iowa	3	7	7	6	--	23

1989 Syracuse 19, Georgia 18						
On a day that offered the warmest weather in Peach Bowl history, Georgia led the majority of the contest and appeared destined to capture the second Peach Bowl victory in school history. However, the Bulldogs could not put the Orangemen away, and K John Biskup's 26-yard field goal with 25 seconds to go gave Syracuse its first and most important lead.						
Syracuse	7	0	3	9	--	19
Georgia	7	3	8	0	--	18

1990 Auburn 27, Indiana 23						
A one-yard bootleg by Auburn QB Stan White with 39 seconds left gave the Tigers a heart-stopping, come-from-behind victory over Indiana. Auburn's last-second victory was the fourth in the last five Peach Bowls decided in the last minute of play.						
Auburn	7	10	0	10	--	27
Indiana	7	3	0	13	--	23

1991 East Carolina 37, North Carolina State 34						
In the final Peach Bowl at Atlanta-Fulton County Stadium, East Carolina rallied from a 17-point fourth quarter deficit to defeat in-state rival N.C. State, 37-34. The game took place in front of the largest crowd (59,322) in Peach Bowl history. Pirates QB Jeff Blake completed the last of his record-setting four TD passes to TE Luke Fisher with 1:32 remaining to give ECU the victory.						
East Carolina	7	10	0	20	--	37
North Carolina State	7	7	13	7	--	34



## YEAR-BY-YEAR SUMMARIES

1986 Virginia 25, North Carolina State 24						
Driving 57 yards in the last 1:53, Virginia Tech nipped N.C. State 25-24 on Chris Kinzer's 40-yard field goal as time expired. A crowd of 53,668 watched the Hokies and the Wolfpack battle in sun-drenched Atlanta-Fulton County Stadium. N.C. State went ahead 24-22 with over seven minutes remaining before the Hokies' decisive march.						
Virginia Tech	10	0	6	9	--	25
North Carolina State	7	14	0	3	--	24

1987 Tennessee 27, Indiana 22						
Playing before the largest crowd (58,737) in Peach Bowl history and the game's second consecutive sellout, Tennessee's came from behind to defeat Big-Ten runner-up Indiana, 27-22. Reggie Cobb scored the Volunteers' decisive touchdown on a nine-yard fourth-quarter run.						
Tennessee	14	7	0	6	--	27
Indiana	3	7	6	6	--	22

1988 North Carolina State 28, Iowa 23						
A 75-yard Shane Montgomery touchdown pass fueled a 21-point second quarter as North Carolina State held on to defeat Iowa. The combatants combined to shatter 18 Peach Bowl records as the Hawkeyes battled back from an early hole but fell shy of the win. Iowa quarterback Chuck Hartlieb threw for 428 yards in the defeat.						
North Carolina State	7	21	0	0	--	28
Iowa	3	7	7	6	--	23

1989 Syracuse 19, Georgia 18						
On a day that offered the warmest weather in Peach Bowl history, Georgia led the majority of the contest and appeared destined to capture the second Peach Bowl victory in school history. However, the Bulldogs could not put the Orangemen away, and K John Biskup's 26-yard field goal with 25 seconds to go gave Syracuse its first and most important lead.						
Syracuse	7	0	3	9	--	19
Georgia	7	3	8	0	--	18

1990 Auburn 27, Indiana 23						
A one-yard bootleg by Auburn QB Stan White with 39 seconds left gave the Tigers a heart-stopping, come-from-behind victory over Indiana. Auburn's last-second victory was the fourth in the last five Peach Bowls decided in the last minute of play.						
Auburn	7	10	0	10	--	27
Indiana	7	3	0	13	--	23

1991 East Carolina 37, North Carolina State 34						
In the final Peach Bowl at Atlanta-Fulton County Stadium, East Carolina rallied from a 17-point fourth quarter deficit to defeat in-state rival N.C. State, 37-34. The game took place in front of the largest crowd (59,322) in Peach Bowl history. Pirates QB Jeff Blake completed the last of his record-setting four TD passes to TE Luke Fisher with 1:32 remaining to give ECU the victory.						
East Carolina	7	10	0	20	--	37
North Carolina State	7	7	13	7	--	34



## YEAR-BY-YEAR SUMMARIES

1992 North Carolina 21, Mississippi State 17						
<p>The Silver Anniversary Peach Bowl was the first played in the Georgia Dome, and a sellout crowd of 69,125 established new Peach Bowl and Georgia Dome records. In the first quarter, Mississippi State jumped ahead 14-0, but the Tar Heels tied the game at 14 with a returned blocked punt touchdown. A fourth-quarter interception return score proved enough to cement the Tar Heels' win.</p>						
North Carolina	0	0	14	7	--	21
Mississippi State	14	0	0	3	--	17

1993 Clemson 14, Kentucky 13						
<p>The Peach Bowl's decade of close games continued as Clemson came from behind to upend Kentucky, 14-13. Emory Smith, brother of NFL star RB Emmitt, scored the winning TD on a 21-yard pass from Clemson's fourth quarter replacement QB Patrick Sapp with 20 seconds remaining.</p>						
Clemson	7	0	0	7	--	14
Kentucky	0	3	0	10	--	13

1994 North Carolina State 28, Mississippi 24						
<p>North Carolina State and Mississippi State followed Peach Bowl protocol with a hard-fought, back-and-forth contest. With the score tied at 20 early in the fourth quarter, Wolfpack QB Terry Harvey connected with Jimmy Gressett for a 62-yard completion. The four-play 80-yard scoring drive was capped off by an 11-yard Carlos King touchdown run. A stingy Wolfpack defense limited Mississippi State to only a field goal in the final minutes to seal the school's fourth Peach Bowl win.</p>						
North Carolina State	6	7	8	7	--	28
Mississippi State	7	6	8	3	--	24

1995 Virginia 34, Georgia 27						
<p>Virginia controlled the game and led 27-17 after three quarters. Early in the fourth quarter, Georgia kicked a field goal to narrow the margin to seven points. With 1:09 remaining, Georgia's Jason Ferguson picked up a Virginia fumble and returned it 10 yards for a touchdown. With a record crowd of 70,284 roaring, the ensuing kickoff was run back by Virginia's Demetrius Allen for record-setting and game-winning 83-yard return for a touchdown.</p>						
Virginia	14	10	3	7	--	34
Georgia	3	11	3	10	--	27

1996 LSU 10, Clemson 7						
<p>LSU's Aaron Adams blocked a potential game-tying Clemson field goal with less than two minutes remaining in the game to preserve the victory. In a game dominated by defense, LSU overcame an early seven point deficit and a 151-yard rushing performance by Clemson tailback Raymond Priester to capture its second consecutive bowl victory and post its first 10 win season since 1987.</p>						
LSU	0	10	0	0	--	10
Clemson	7	0	0	0	--	7

1997 Auburn 21, Clemson 17						
<p>Auburn skidded by Clemson, 21-17 in an exiting back and fourth battle. Auburn drew first blood with a 52-yard Jaret Holmes field goal in the first quarter. Clemson answered back in the second quarter with a touchdown off a blocked punt. Holmes booted another 24-yarder to make it a 7-6 game at the half, but Clemson answered out of the gate with a Terry Witherspoon touchdown to make the score 14-6. Auburn QB Dameyune Craig answered a Clemson field goal with a 22-yard scamper to close the gap to 17-12. With 8:45 left in the game, Auburn's Rusty Williams rushed in from seven-yards out to put the SEC's Tigers ahead. Holmes sealed the 21-17 win with a 22-yard field goal as the clock wound down.</p>						
Auburn	3	3	0	15	--	21
Clemson	0	7	10	0	--	17



## YEAR-BY-YEAR SUMMARIES

1998 Georgia 35, Virginia 33						
<p>The No. 19-ranked Georgia Bulldogs avenged their 1995 Peach Bowl loss to Virginia with a stirring, come-from-behind 35-33 victory in front of a record crowd of 72,876. After 12th-ranked Virginia built a 21-point lead, the Bulldogs responded with 21 points of their own. Virginia regained the lead late in the third quarter on a 67-yard pass from Aaron Brooks to Terrence Wilkins. The extra-point failed and at the end of three quarters the Cavaliers led 27-21. Georgia took the lead for good on its first possession of the fourth quarter when senior running back Olandis Gary capped a 67-yard drive with a two-yard run. After a Quincy Carter quarterback sneak from one yard out and an extra point conversion upped the Bulldog lead to eight points, Virginia responded as Brooks scrambled 30 yards to cut the lead to two points 35-33 with 1:34 remaining. The two-point conversion failed, seemingly icing the victory for Georgia. However, Virginia recovered the onside kick, setting up a 48-yard field goal attempt with 19 seconds remaining. The kick sailed wide right, though, and Georgia held on for the victory.</p>						
Georgia	0	7	14	14	--	35
Virginia	0	21	6	6	-	33

1999 Mississippi State 17, Clemson 7						
<p>The second scoreless first half in Peach Bowl history greeted a new record crowd of 73,315 as the Clemson and Mississippi State defenses forced their will on their opponents. In the third quarter, MSU finally broke through with a 39-yard field goal from junior kicker Scott Westerfield capping a seven-play, 31-yard drive. The Bulldogs added a touchdown just 3:20 into the fourth when sophomore quarterback and game MVP Wayne Madkin scrambled in from the Clemson two-yard line. Clemson stormed back, moving the ball 70 yards on eight plays and finding the end zone on Brandon Streeter's quarterback sneak from the one. Mississippi State put the game away on their next possession when Madkin hooked up with Dontae Walker on a 15-yard pass play. The win gave the Bulldogs a 10-2 record and No. 12 national ranking.</p>						
Mississippi State	0	0	3	14	-	17
Clemson	0	0	0	7	-	7

2000 LSU 28, Georgia Tech 14						
<p>The 2000 edition of the Chick-fil-A Peach Bowl saw an interesting match-up of a heavily favored Georgia Tech team – virtually playing at home in the Georgia Dome – against an upstart LSU squad. Despite four turnovers, everything seemed in order as Tech's running game mounted a 14-3 halftime lead with the help of a 32-yard TD run from Joe Burns and a nine-yard scoring jaunt from Jermaine Hatch. In the third quarter, quarterback Rohan Davey – in for starter Josh Booty – connected on a three-yard pass to FB Tommy Banks, but the conversion attempt failed and LSU still trailed 14-9. LSU refused to give up the momentum and Tech continued to turn the ball over, totaling six for the game. In the fourth, the Tigers tallied 19 unanswered points on three scoring drives and two two-point conversions highlighted by Davey TD passes to Josh Reed and Banks that served as bookends for a career-long, 49-yard field goal by John Corbello. The 28-14 upset victory for LSU was played in front of a Chick-fil-A Peach Bowl record crowd of 73,614.</p>						
LSU	3	0	6	19	--	28
Georgia Tech	7	7	0	0	--	14

2001 North Carolina 16, Auburn 10						
<p>It was a night of comebacks for both teams, although ultimately sweeter for North Carolina. The Tar Heels, after an 0-3 start, completed an 8-5 season with a 16-10 victory over Auburn in the Georgia Dome. The Tigers, meanwhile, launched a comeback of their own that put a scare into the blue-clad Tar Heel faithful. UNC built a 16-0 lead behind the defensive power of All-American Julius Peppers and Defensive MVP Ryan Sims and the scrambling ability of quarterback Ronald Curry. That lead was narrowed to 16-3 by a 34-yard Damon Duval field goal with 13:16 left in the game. Later, a botched punt by North Carolina set up a 12-yard Daniel Cobb touchdown pass to Lorenzo Diamond to make the score 16-10 with 1:18 left. Carolina's Richard Moore recovered the ensuing onside kick to end Auburn's comeback. The game capped a three game winning streak for the Tar Heels and a three-game losing streak for the Tigers. It was the fifth straight sellout for the Chick-fil-A Peach Bowl in a game that maintained the bowl's tradition of close contests.</p>						
North Carolina	7	3	6	0	--	16
Auburn	0	0	0	10	-	10



## YEAR-BY-YEAR SUMMARIES

2002 Maryland 30, Tennessee 3						
For the second straight season, the Terrapins finished a 10-win campaign with a bowl matchup against an SEC powerhouse. This time, the results were much different than the one-sided Fed Ex Orange Bowl loss to Florida nearly a year earlier. Maryland quarterback and Offensive MVP Scott McBrien engineered two lengthy touchdown drives, capped by his own TD runs of one and six yards, while Defensive MVP E.J. Henderson had 12 solo tackles (four for losses of 23 yards and two sacks) to lead a surprising Terrapin rout. Maryland Cornerback Curome Cox set two Chick-fil-A Peach Bowl records (most interception return yards and longest interception return) when he picked off a Casey Clausen pass and returned it 54 yards for a touchdown early in the second quarter. Maryland won with key plays in all three phases of the game, as kicker Novak protected the lead with three field goals (two for more than 40 yards) and Steve Suter had a bowl-record 95 yards in punt returns, including one for 79 yards (another bowl record).						
Tennessee	0	3	0	0	-	3
Maryland	7	10	3	10	-	30

2003 Clemson 27, Tennessee 14						
Unranked Clemson, who won its last three regular season games by a combined 95 points, stunned sixth-ranked Tennessee in front of 75,125, a Georgia Dome record crowd for a sporting event. Little-used Clemson tailback Chad Jasmin ran over the Volunteers for a career high 130 yards on 15 carries and a touchdown to earn Offensive MVP honors. Head Coach Tommy Bowden and the Tigers used their hurry-up offense throughout the first half and caught the Vols off guard when Kyle Browning scored from eight yards on a "fumblerooskie". Tennessee quarterback Casey Clausen threw for 384 yards, nine shy of his career-best, and a pair of touchdowns, but got little help from his running game. Led by Defensive MVP Leroy Hill, Clemson clamped down on the Vols' ground attack to a mere 38 yards on 26 carries. Clemson's Duane Coleman added a TD run and Aaron Hunt kicked two field goals (23, 28), giving the ACC its third straight Chick-fil-A Peach Bowl victory.						
Clemson	10	14	0	3	-	27
Tennessee	7	7	0	0	-	14

2004 Miami 27, Florida 10						
The No. 14 Miami Hurricanes stormed to an early lead via key plays on defense and special teams and never looked back to defeat intrastate rival No. 20 Florida. In the first quarter, Thomas Carroll blocked a Florida punt and Devin Hester returned it 78 yards for a touchdown. On the next series, Hester intercepted Florida QB Chris Leak and returned it 28 yards, leading to a Jon Peattie 47-yard field goal. Miami forced another Florida punt and Roscoe Parrish returned it 72 yards for a 17-3 halftime lead. The Hurricanes' big returns proved critical as the Gators' defense held Miami to only 50 yards total offense in the first half. Florida actually outgained Miami for the game (406 yards to 277) but Miami QB Brock Berlin would not be denied against his former team, passing for 171 yards. Berlin's 20-yard touchdown strike to WR Ryan Moore in the third quarter gave Miami a 24-3 lead to seal the school's first Chick-fil-A Peach Bowl victory since 1980.						
Florida	0	3	7	0	--	10
Miami	7	10	7	3	--	27

2005 LSU 40, Miami 3						
In what was largely considered the best bowl match-up outside the national championship game, the No. 9 Miami Hurricanes took on the No. 10 LSU Tigers in the 38 <sup>th</sup> annual Chick-fil-A Peach Bowl. The 'Canes came in as favorites – and as defending champs, having beaten Florida in the previous Chick-fil-A Peach Bowl – but LSU had other ideas. Fresh off an upset loss to Georgia in the SEC Championship game, the Tigers used their return trip to Atlanta as a way to regain respect. What unfolded was the most lopsided victory in Chick-fil-A Peach Bowl history and the worst bowl defeat in Miami history - a 40-3 massacre by LSU. Backup quarterback Matt Flynn – in for the injured JaMarcus Russell – was the surprise of the night, connecting on 13 of 22 passes for 196 yards and two touchdowns to earn MVP honors. Halfback Joseph Addai ran for 130 yards and another two TDs to complement the Tigers' impressive offensive performance. LSU's defense held the high-powered Miami offense in check all night in what evolved into a one-sided game, vastly different from the close, hard-fought game the Chick-fil-A Peach Bowl is famous for.						
LSU	3	17	14	6	-	40
Miami	3	0	0	0	-	3



## YEAR-BY-YEAR SUMMARIES

### 2006

Georgia 31, Virginia Tech 24

In the inaugural Chick-fil-A Peach Bowl, Virginia Tech jumped out to a quick 21-3 halftime lead thanks to two 1-yard touchdown runs by tailback Branden Ore and a trick play in which receiver Eddie Royal hurled a 53-yard touchdown pass to tight end Sam Wheeler. The second half, however, saw a complete shift in momentum. The Bulldogs cut the lead to 21-6 on a 52-yard Brandon Coutu field goal by early in the third quarter. It was then that Georgia's Mark Richt decided to use a little trick-eration of his own with an early on-sides kick, which his team recovered. The ensuing possession led to a 6-yard touchdown pass from Matthew Stafford to tight end Martrez Milner that sliced the Hokies' lead to 21-13. In the next quarter and a half, Tech quarterback Sean Glennon turned the ball over four times, three of them leading to 18 UGA points. Gregg Lumpkin's 3-yard touchdown run, followed by a Stafford to Milner two-point conversion, tied the game. The Bulldogs capitalized on two more VT turnovers via a 28-yard field goal, and a Brannon Southerland one-yarder for a 31-21 lead which secured the largest, second-half come-from-behind victory in Chick-fil-A Peach Bowl history. The Hokies managed a field goal in the closing minutes of the game, but it wasn't enough as the SEC claimed its second straight win against the ACC in Atlanta's bowl game. Georgia quarterback Matthew Stafford and linebacker Tony Taylor were named offensive and defensive MVPs.

Georgia	3	0	10	18	-	31
Virginia Tech	0	21	0	3	-	24

### 2007

Mississippi State 17, Clemson 7

The Chick-fil-A Peach Bowl's 40<sup>th</sup> anniversary game between No. 15 Clemson and No. 22 Auburn played out in two opposing halves – stout defense in the first and fast-moving offense in the second. The two Tigers logged the first overtime game in Chick-fil-A Peach Bowl history and a record 11<sup>th</sup> straight sellout crowd of 74,413. In the first quarter, both combatants played conservatively and with tough, drive-stopping defense. A 36-yard field goal by Auburn's Wes Byrum provided the only points. Clemson found a little life of its own in the second when star tailback C.J. Spiller broke free for an 83-yard touchdown run. The game-changing rush – the longest in Chick-fil-A Peach Bowl history and of Spiller's career – gave Clemson a 7-3 lead at the half. On the first drive of the second half, Auburn answered with a touchdown of its own, ending a 10-play sequence with a go-ahead reception by tailback Mario Fannin. The third quarter came to an end as Clemson was knocking at the door from the Auburn five-yard line. An 11-play, 37-yard drive that took 5:20 finally ended in a 22-yard Mark Buchholz field goal when Auburn stopped Clemson on six consecutive plays inside the 10 yard line. Auburn's ensuing possession ended with the only turnover of the game, an interception by Clemson's Crezdon Butler, that turned into a James Davis one-yard plunge that put Clemson back on top 17-10. After a 30-yard kickoff return by Patrick Lee, quarterback Brandon Cox and Kodi Burns went to work, tallying four first downs on their way to a 70-yard scoring drive that ended in a Ben Tate one-yarder up the middle for the tying touchdown with 8:27 remaining. In overtime, Clemson managed only 17 yards on seven plays before settling for a 25-yard Buchholz field goal. On Auburn's possession, Cox hit Rodgeriquis Smith for 12 yards to set up a Kodi Burns seven-yard TD run that ended the game in thrilling fashion, as the entire Auburn team sprinted for the end zone to celebrate the 23-20 victory. Spiller was named offensive MVP of the game, and Auburn defensive tackle Pat Sims was named defensive MVP of the game.

Clemson	0	7	0	10	3 (OT)	-	20
Auburn	3	0	7	7	6 (OT)	-	23

### 2008

LSU 38, Georgia Tech 3

The LSU Tigers picked a good time for their most complete game of the 2008 season, using a solid and complete effort from their offense, defense and special teams to rout No. 14 Georgia Tech 38-3. Led by freshman quarterback and Offensive MVP Jordan Jefferson and running back Charles Scott, the Tigers jumped on the Yellow Jackets from the opening whistle. Scott scored his first of three touchdowns on the game's opening drive. Georgia Tech head coach Paul Johnson made good on his promise to mix up the offense, diverting from his trademark triple option on the game's first drive and throwing the ball on three of the first four plays. It nearly worked out for the Jackets, with the first play going for 40 yards and only a highlight-reel play by LSU cornerback Chad Jones preventing a touchdown on the second. After trading punts, Georgia Tech got a 24-yard Scott Blair field goal to cut the LSU lead to 7-3. When Georgia Tech reverted to the triple option, LSU's defense responded to the challenge and held the nation's third ranked rushing offense to 180 total ground yards and no touchdowns. Defensive MVP Perry Riley recorded a team-high 11 tackles, including one for a loss. While the LSU defense held the Jackets' offense in check, Jefferson and Scott went to work as the Tigers tied a Bowl record with 28 second quarter points to leap out to a 35-3 lead at the half. Scott started off the second with a pair of touchdown runs, equaling the Bowl record for rushing touchdowns in a game with three and points in a game with 18. Jefferson then found Richard Dickson for a 25-yard touchdown strike, and Keiland Williams rushed another in to cap off the scoring explosion. While LSU's offense was clicking on all cylinders, Georgia Tech struggled to find a break, going 0-3 on fourth down plays including a failed fake punt in the second quarter that set up Jefferson's touchdown pass. The scoring pace settled down in the second half, with the only marks to go on the board coming from LSU kicker Colt David, who set a new Bowl record with a 53-yard third quarter field goal to give the Tigers what would be the final 38-3 margin of victory. The win runs LSU's record in the Chick-fil-A Peach Bowl to 5-0, while Georgia Tech is 0-4 in its hometown bowl. LSU additionally now boasts two of the biggest blowouts in Chick-fil-A Peach Bowl history, with the Tigers also owning the most lopsided win in their 40-3 win over Miami in 2005.

LSU	7	28	3	0	-	38
Georgia Tech	3	0	0	0	-	3



## YEAR-BY-YEAR SUMMARIES

### 2009

Virginia Tech 37, Tennessee 14

Following defeats at the Chick-fil-A Kickoff Game against Alabama in the Georgia Dome and at Georgia Tech earlier in the season, No. 11 Virginia Tech's third trip to Atlanta in 2009 proved fruitful. The Hokies relied on their trademarks – power running and aggressive defense – to defeat Tennessee, 37-14. Virginia Tech jumped ahead 14-0 early behind a pair of touchdown runs from ACC Freshman of the Year Ryan Williams, who additionally set the conference record by logging his 22<sup>nd</sup> score of the season. The Volunteers cut the deficit to 14-7 behind a Montario Hardesty touchdown scamper, and appeared to shift the momentum going into halftime after tying the game on a touchdown toss from Jonathan Crompton to Denarius Moore. However, the 18 seconds left on the clock were more than enough for Virginia Tech to answer back. Quarterback Tyrod Taylor's 63-yard bomb to Jarrett Boykin was upheld following review, and a second was placed back on the game clock. Already headed to the locker room, Tennessee returned to the field to watch Hokies kicker Matt Waldron's go-ahead 21-yard field goal sail through the uprights. Virginia Tech would not look back from there, again turning to its defense to close the game. During the team's final four regular season games, the Hokies surrendered a mere six total second-half points, and Tennessee likewise struggled to solve the attack. Trailing 24-14 in the third, a likely touchdown pass fell out of Volunteers receiver Denarius Moore's hands and symbolized the team's struggles. Touchdown runs from Taylor and running back David Wilson cemented the victory. Ultimately, Virginia Tech held the Volunteers to an all-time bowl low 5 net yards rushing and sacked Crompton six times. Williams was named the game's Most Outstanding Player on offense after collecting 117 rushing yards and two touchdowns, while linebacker Cody Grimm earned defensive Most Outstanding Player honors following three tackles for a loss and one sack. With the win, the Hokies clinched their sixth-straight season with 10 or more victories. The game also drew a sell-out crowd – the Chick-fil-A Peach Bowl's 13<sup>th</sup> in a row – of 73,777, the fourth-highest number in Chick-fil-A Peach Bowl history.

Virginia Tech	7	10	7	13	–	37
Tennessee	0	14	0	0	–	14

### 2010

Georgia 31, Virginia Tech 24

With two teams coming into the game as evenly matched as No. 19 South Carolina and No. 23 Florida State, there was no doubt that the 43<sup>rd</sup> annual Chick-fil-A Peach Bowl had all the makings of an epic battle that would ultimately prove to be the most-watched Chick-fil-A Peach Bowl in history. The game would be decided in a unique fashion. Key offensive injuries on both sides, a lopsided turnover margin and a Chick-fil-A Peach Bowl-record-tying four field goals by a single team would make the difference in Florida State's 26-17 victory over South Carolina.

Florida State grabbed the early advantage using steady play from back-up quarterback E.J. Manuel and riding kicker Dustin Hopkins' leg that tallied 14 of the Seminoles' 26 points by itself on four field goals and a pair of PATs. The Gamecocks battled themselves, handing FSU five turnovers on three interceptions and two fumbles. But the stout USC defense kept it close throughout the first half. The Seminoles finally found the end zone in the second quarter when Chris Thompson rushed for a 27-yard touchdown. However, South Carolina quickly marched its way down the field and kicker Spencer Lanning booted a 40-yard field goal as time expired to make it 13-3 at halftime. The tenacious Gamecocks chipped away at Florida State's lead in the third and fourth quarters, using two key drives to come to within two points. The momentum-changer came on a trick play. Faking out the Seminoles and most of the fans in the Georgia Dome, Garcia made a backwards pass to wide receiver Ace Sanders. With the focus on Sanders, Garcia drifted to the end zone. Sanders found Garcia wide open and the two connected for a three-yard touchdown pass closing the gap to 16-10. Later, with Florida State up 19-10, South Carolina drove 79 yards on seven plays to score its second touchdown of the half. Tailback Brian Maddox, who had come in for the Gamecocks' injured All-American Marcus Lattimore, broke through the 'Noles defense on a seven-yard rushing touchdown with 11:56 remaining. However, Florida State answered on its next possession with a controlled and methodical drive. Taking nearly six-and-a-half minutes off the clock, Manuel finally connected with Taiwan Easterling for a game-clinching, seven-yard touchdown pass at 5:27. Chris Thompson was named the Most Outstanding Offensive Player after recording 164 total offensive yards – 147 of which came on 25 rushes. Greg Reid was selected as the Most Outstanding Defensive Player with 71 return yards, five tackles, two forced fumbles and four break-ups.

South Carolina	0	3	7	7	–	17
FSU	6	7	6	7	–	26

### 2011

Virginia 24, Auburn 43

Spurred by an explosive offensive attack and timely special teams play, No. 25 Auburn broke open a close game in the second quarter and claimed its fourth Chick-fil-A Peach Bowl victory in school history with a 43-24 win over Virginia in front of 72,919 fans at the Georgia Dome. Even without star running back Michael Dyer, the Tigers managed to roll up 454 yards of total offense and a season-best 43 points. The Cavaliers jumped out to a 14-7 lead in the 2<sup>nd</sup> quarter after quarterback Michael Rocco found Kris Burd for a six-yard touchdown strike, the duo's second scoring connection of the night. However, the Tigers responded with touchdowns on three consecutive drives, the second of which came after recovering an onside kick that put the momentum squarely on the side of the defending national champions. Running back Onterio McCalebb turned in one of his finest performances of the season in place of Dyer, rushing for 109 yards and a touchdown on 10 carries en route to earning Offensive MVP honors. McCalebb also caught two passes for 53 yards, including a 25-yarder with just 59 seconds remaining in the first half that put the Tigers up 28-14. As time expired, Virginia's Robert Randolph connected on a 24-yard field goal attempt to cut the Auburn lead to 28-17 at the intermission, but the score did little to quell the Tigers' attack. Auburn marched down the field to open the second half, as freshman running back Tre Mason capped a nine-play, 80-yard drive with a 22-yard touchdown run to put the Tigers up 35-17. Virginia was poised to regain the momentum following a Kevin Parks touchdown run, followed by an Auburn three-and-out, but the Tigers' special teams came through with another big play as Angelo Blackson registered Auburn's second blocked punt of the night through the back of the end zone for a safety to put the Tigers up 37-24. Kicker Cody Parkey would tack on two more field goals, from 45 and 37 yards out to put the game out of reach.

Virginia	7	10	7	0	–	24
Auburn	7	21	12	3	–	43





## YEAR-BY-YEAR SUMMARIES

### 2012 LSU 24, Clemson 25

In the first matchup of 10-win teams in Chick-fil-A Peach Bowl history, No. 14 Clemson and No. 8 LSU proved to be one for the ages as Clemson came back from an 11-point fourth quarter deficit to defeat LSU, 25-24. Spurred by a late passing attack by quarterback Tajh Boyd, Clemson went 60 yards in just 1:39 during the game's final drive. Kicker Chandler Catanzaro booted a 37-yard field goal as time expired to seal the victory. LSU struck first in the game after Clemson fumbled on its own 28-yard line on the third play of the game. LSU's Jeremy Hill took advantage of the turnover with a 17-yard touchdown run. Hill recorded 124 yards and two touchdowns in the Tigers' loss. Clemson quickly responded on the next drive of the game with a methodical 11-play, 75-yard drive capped by an 11-yard touchdown run by Boyd. In the opening minutes of the second quarter, LSU's Zach Mettenberger connected with receiver Jarvis Landry on a 6-yard touchdown pass to give the lead back to the Tigers from Baton Rouge.

Clemson wide receiver DeAndre Hopkins turned in one of the finest performances in Chick-fil-A Peach Bowl history as he set Bowl records with 13 receptions for 191 yards, including an 11-yard touchdown grab before halftime. LSU blocked Catanzaro's extra point attempt to preserve the 14-13 lead at the break. LSU's defense held Clemson scoreless in the third quarter as the unit forced three punts and a fumble as Clemson failed to get across the 50-yard line. A 57-yard rushing touchdown by Hill and a 20-yard field goal by Drew Alleman gave LSU an 11-point lead heading into the fourth quarter. However, Clemson battled back as Boyd passed for 159 of his 346 yards in the fourth quarter, earning honors as the most outstanding offensive player of the game. Boyd set up a 26-yard field goal by Catanzaro and hit Hopkins on a 12-yard touchdown pass to make 24-22. Following a three-and-out by LSU, Clemson took possession with just 1:39 left in the game. Boyd once again connected with Hopkins on a 26-yard pass on fourth-and-16 to keep the drive alive and set up Catanzaro's game-winning kick.

LSU	7	7	10	0	—	24
Clemson	7	6	0	12	—	25

### 2013 Duke 48, Texas A&M 52

The 2013 Chick-fil-A Peach Bowl was the first meeting between Duke and Texas A&M, as well as both programs' first appearance in the bowl. In a contest dominated by offense, Duke scored first and stayed ahead of the Aggies for the majority of the game, with a 21-point lead at halftime. Behind the arm of Heisman winner Johnny Manziel, Texas A&M staged a comeback, as Manziel threw 30-for-38 for 382 yards and ran for 77 yards for five touchdowns. On the receiving end teammate Travis Labhart scored three touchdowns. Texas A&M was down 48-45 with less than four minutes in the game with the possession in favor of Duke. The Aggies Tony Hurd Jr. intercepted the ball and ran it back 55 yards to give the Aggies the go-ahead touchdown. Duke quarterback Anthony Boone went 29-45 for 427 yards and three touchdowns with receivers Jamison Crowder and Braxton Deaver each breaking the 100-yard mark. 20 game records were tied or broken including points scored, total offense and first downs.

Duke	14	24	3	7	48
Texas A&M	3	14	14	21	52