

QUICK FACTS

2014

MALAYSIA EDUCATIONAL STATISTICS

With Best Compliments

Educational Planning and Research Division
MINISTRY OF EDUCATION MALAYSIA

QUICK FACTS 2014

MALAYSIA EDUCATIONAL STATISTICS

ISSN : 1985-6407
JULY 2014

Published by :

Educational Data Sector
Educational Planning and Research Division
Ministry of Education Malaysia
Level 1-4, Block E8,
Government Complex Parcel E,
Federal Government Administrative Centre,
62604 Putrajaya

Website :

<http://emisportal.moe.gov.my>

PREFACE



**Director
Educational Planning and Research Division
Ministry of Education, Malaysia**

The publication of the Quick Facts 2014 is part of our continuous effort to provide accurate and concise statistics on education. The Educational Planning and Research Division has collaborated with various other agencies to obtain latest data which can be used for informed-decision making and planning educational programmes. I believe the statistics and information provided in this pocket-sized publication will be useful to policy makers, researchers and all those involved in implementing educational projects.

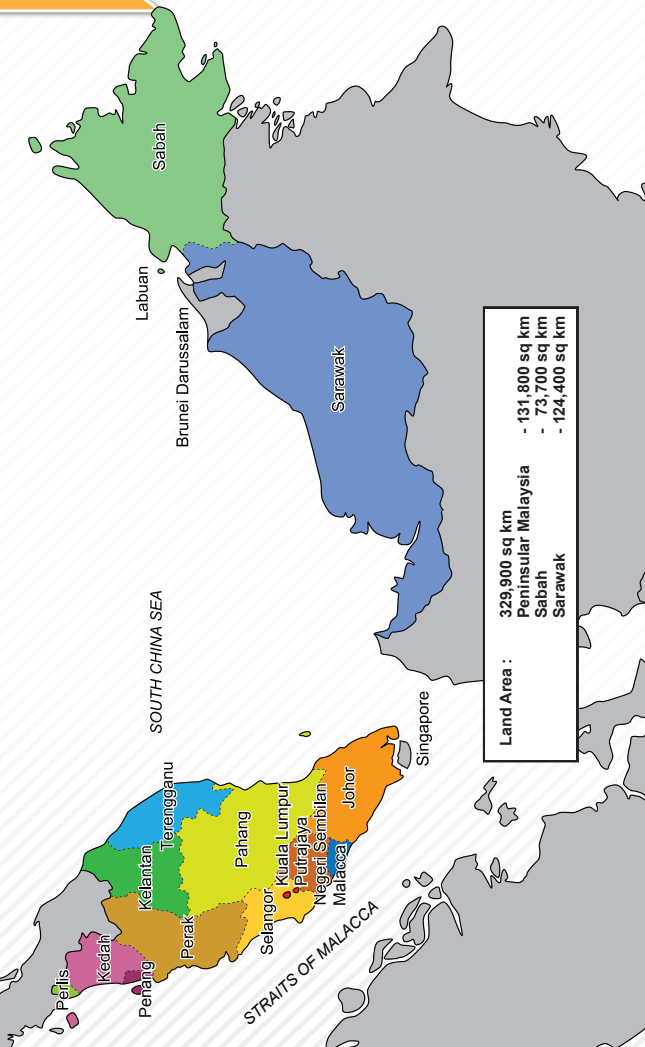
Quick Facts 2014 provides data on schools, enrolment, and teachers at the primary, secondary and post secondary levels. In addition, we have included basic statistics on tertiary education and selected world education indicators to provide a comprehensive coverage of statistics for all users.

I would like to congratulate all those involved in producing Quick Facts 2014 and thank all divisions and agencies that have contributed data for this publication.

A handwritten signature in black ink that reads "Faridah". The signature is written in a cursive style and is underlined with a single horizontal stroke.

DR. FARIDAH BT. ABU HASSAN

MALAYSIA : BASIC INFORMATION



MALAYSIA : BASIC INFORMATION

Capital City	: Kuala Lumpur
Population 2013 ('000)	
Malaysia	: 29.9 million
i Peninsular Malaysia	: 23.7 million
ii Sabah	: 3.5 million
iii Sarawak	: 2.6 million
iv W.P. Labuan	: 0.1 million
Population Growth Rate (%)	: 1.4%
Life Expectancy at Birth	: 72.6 ^e (Male)
	: 77.2 ^e (Female)
Age Structure	: 0 - 5 years - 3.0 million
	: 6 - 14 years - 4.7 million
	: 15 - 59 years - 19.6 million
	: 60 years and above - 2.6 million
Language	: Bahasa Melayu (Official Language)
	: English (Second Language)
Time	: 8 hours ahead of GMT
Official Name	: Federation of Malaysia
Form of State	: Federated Constitutional Monarchy
Head of State	: DYMM Seri Paduka Baginda Yang di-Pertuan Agong XIV
	Almu'tasimu Billahi Muhibbuddin Tuanku Alhaj Abdul Halim
	Mu'adzam Shah Ibni Al-Marhum Sultan Badlishah
Head of Government	: Prime Minister
	(Y.A.B Dato' Sri Mohd Najib bin Tun Haji Abdul Razak)
Minister of Education	: Y.A.B Tan Sri Dato' Haji Muhyiddin bin Mohd. Yassin
Minister of Education II	: Y.B. Dato' Seri Idris bin Jusoh

Note : ^e- estimate
Source : Department of Statistics (DOS), Malaysia

CONTENTS

	PREFACE	3
	MALAYSIA : BASIC INFORMATION	4-5
	CONTENTS	6-9
	GENERAL INFORMATION	10
	PRE-SCHOOL	10
	A. MOE Pre-Schools	
Table 1.1	Number of Pre-schools, Classes, Teachers and Enrolment in Pre-schools (2012 - 2014)	10
	B. Other Agencies	
Table 1.2	Number of Pre-schools, Classes, Teachers and Enrolment in Private Institutions and Institutions Under Other Government Agencies (2014)	10
	SCHOOLS - PRIMARY	
	A. MOE Primary Schools	
Table 2.1	Number of Primary Schools (2012 - 2014)	11
Table 2.2	Number of Classes in Primary Schools (2012 - 2014)	12
	B. Other Agencies	
Table 2.3	Number of Primary Schools in Private Institutions (2014)	13
Table 2.4	Number of Primary Schools in Institutions Under Other Government Agencies (2014)	13
	SCHOOLS - SECONDARY	
	A. MOE Secondary Schools	
Table 2.5	Number of Secondary Schools (2012 - 2014)	14
Table 2.6	Number of Classes in Secondary Schools (2012 - 2014)	15
	B. Other Agencies	
Table 2.7	Number of Secondary Schools in Private Institutions (2014)	16
Table 2.8	Number of Secondary Schools in Institutions Under Other Government Agencies (2014)	16
Table 2.9	Number of Private Institutions With Two Levels (Primary and Secondary) (2014)	16
	ENROLMENT - PRIMARY	
	A. MOE Primary Schools	
Table 3.1	Enrolment at Primary Level by Type of Schools (2012 - 2014)	17
Table 3.2	Enrolment at Primary Level by Grade and Gender (2012 - 2014)	18
	B. Other Agencies	
Table 3.3	Enrolment at Primary Level in Private Institutions (2014)	18
Table 3.4	Enrolment at Primary Level in Institutions Under Other Government Agencies (2014)	18
	ENROLMENT - SECONDARY	
	A. MOE Secondary Schools	
Table 3.5	Enrolment at Secondary Level by Type of Schools (2012 - 2014)	19
Table 3.6	Enrolment at Secondary Level by Grade, Academic Streams and Gender (2012 - 2014)	20

	B. Other Agencies	
Table 3.7	Enrolment at Secondary Level in Private Institutions (2014)	21
Table 3.8	Enrolment at Secondary Level in Institutions Under Other Government Agencies (2014)	21
Table 3.9	Enrolment in Private Institutions With Two Levels (Primary and Secondary) (2014)	21
	C. Matriculation	
Table 3.10	Matriculation : Number of Colleges, Academic Personnel and Enrolment (2011 - 2013)	21
	SPECIAL EDUCATION	
Table 4.1	Enrolment in Special Education Schools by Grade and Gender (2012 - 2014)	22
Table 4.2	Number of Classes, Enrolment and Teachers in Special Education Integration Programme (2012 - 2014)	22
Table 4.3	Enrolment in Special Education Integration Programme by Grade (2012 - 2014)	23
	TEACHERS - PRIMARY	
	A. MOE Primary Schools	
Table 5.1	Number of Teachers at Primary Level by Type of Training (2014)	24
Table 5.2	Number and Percentage of Teachers at Primary Level by Gender (2012 - 2014)	24
Table 5.3	Number of Teachers at Primary Level by Gender and Age Group (2014)	25
	B. Other Agencies	
Table 5.4	Number of Teachers at Primary Level in Private Institutions (2014)	25
Table 5.5	Number of Teachers at Primary Level in Institutions Under Other Government Agencies (2014)	25
	TEACHERS - SECONDARY	
	A. MOE Secondary Schools	
Table 5.6	Number of Teachers at Secondary Level by Type of Training (2014)	26
Table 5.7	Number and Percentage of Teachers at Secondary Level by Gender (2012 - 2014)	26
Table 5.8	Number of Teachers at Secondary Level by Gender and Age Group (2014)	27
	B. Other Agencies	
Table 5.9	Number of Teachers at Secondary Level in Private Institutions (2014)	27
Table 5.10	Number of Teachers at Secondary Level in Institutions Under Other Government Agencies (2014)	28
Table 5.11	Number of Teachers in Private Institutions With Two Levels (Primary and Secondary) (2014)	28
	PUBLIC EXAMINATIONS	
Table 6.1	Primary School Achievement Test (UPSR) (2011 - 2013)	29
Table 6.2	Lower Secondary Assessment (PMR) (2011 - 2013)	29

Table 6.3	Lower Secondary Assessment (PMR) for Private Candidates and Candidates From Other Government Agencies (2011 - 2013)	30
Table 6.4	Malaysian Certificate of Education (SPM) (2011 - 2013)	31
Table 6.5	Malaysian Certificate of Education (SPM) for Private Candidates (2011 - 2013)	31
Table 6.6	Malaysian Higher School Certificate (STPM) (2011 - 2013)	31
Table 6.7	Malaysian Higher School Certificate (STPM) for Private Candidates (2011 - 2013)	32
Table 6.8	Malaysian Higher Religious Education Certificate (STAM) (2011 - 2013)	32
Table 6.9	Malaysian Higher Religious Education Certificate (STAM) for Private Candidates and Candidates From Other Government Agencies (2011 - 2013)	32

TEACHER EDUCATION

Table 7.1	Number of Institutions, Academic Personnel and Enrolment in Institutes of Teacher Education (ITE) (2012 - 2014)	33
Table 7.2	Enrolment and Academic Personnel in Institutes of Teacher Education (2014)	33

TERTIARY EDUCATION - HIGHER EDUCATION SECTOR

Table 8.1	Number of Public Universities and Enrolment	34
Table 8.2	Entrants, Enrolment and Graduates at Public Universities by Fields of Study and Gender	34
Table 8.3	Percentage and Ratio of Students at Public Higher Education Institutes by Gender	35
Table 8.4	Enrolment and Percentage of International Students at Public Higher Education Institutes	35
Table 8.5	Enrolment and Percentage of Graduates at Public Higher Education Institutes	35
Table 8.6	Academic Staff and Student Ratio at Public Higher Education Institutes	35

EDUCATIONAL EXPENDITURE

Table 9.1	Percentage of Actual Total Educational Expenditure Against Total Government Expenditure (2012-2014)	36
Table 9.2	Actual Educational Capital and Recurrent Expenditure at Current Price (2012-2014)	36
Table 9.3	Percentage of Actual Educational Capital and Recurrent Expenditure (2012-2014)	36
Table 9.4	Actual Educational Recurrent Expenditure by Category (2012-2014)	37
Table 9.5	Percentage of Recurrent Educational Expenditure by Category (2012-2014)	37

ECONOMIC INDICATORS

Table 10.1	Economic Indicators (2012 - 2014)	38
------------	-----------------------------------	----

DEMOGRAPHIC INDICATORS

Table 11.1	Population by Age Group (2012 - 2013)	39
Table 11.2	Population by State (2012 -2013)	39
Table 11.3	Population by Region and Location (2012-2013)	40

Table 11.4	Population by Location (2012-2013)	40
Table 11.5	Birth, Death and Fertility Rates (2011 - 2013)	40
Table 11.6	Literacy Rate (2011 - 2013)	40

MALAYSIA EDUCATION INDICATORS

Table 12.1	Enrolment Rates (2011 - 2013)	41
Table 12.2	Transition Rates : Primary to Lower Secondary and Lower Secondary to Upper Secondary Level (2011 - 2013)	41
Table 12.3	Pupil-Teacher Ratio (2011 - 2013)	41
Table 12.4	Average Class Size (Pupils per Class) (2011 - 2013)	41
Table 12.5	Average School Size (Pupils per School) (2011 - 2013)	42
Table 12.6	Percentage of Teachers in Primary Schools by Gender and Age Group (2013 - 2014)	42
Table 12.7	Percentage of Teachers in Secondary Schools by Gender and Age Group (2013 - 2014)	42

WORLD EDUCATION INDICATORS (WEI)

Table 13.1	World Education Indicators (Malaysia) - Enrolment by ISCED Level	43
Table 13.2	Gross Enrolment Ratio : Primary and Secondary Education	43
Table 13.3	Transition Rate : Primary to Secondary Education	43
Table 13.4	Female Participation in Education (%)	43
Table 13.5	Pupil-Teacher Ratio	44
Table 13.6	Average Class Size	44
Table 13.7	Teaching Weeks per Year in Public Institutions by Level of Education	44
Table 13.8	School Life Expectancy	44
Table 13.9	Public Expenditure on Education	44
Table 13.10	Educational Attainment of the Population Aged 25 Years and Older	45
Table 13.11	Adult and Youth Literacy	45

ABBREVIATIONS AND SYMBOLS

46

GENERAL INFORMATION

Number of Schools, Enrolment and Teachers (2014)*							
Schools		Enrolment			Teachers		
		Male	Female	Total	Male	Female	Total
Pre-school	5,943	98,479	95,746	194,225	996	7,590	8,586
Primary	7,751	1,387,360	1,311,523	2,698,883	72,701	167,684	240,385
Secondary	2,366	1,114,593	1,120,028	2,234,621	55,457	125,012	180,469
TOTAL **	10,117	2,501,953	2,431,551	4,933,504	128,158	292,696	420,854

Notes : * Data only covers educational institutions under MOE

** Total excludes pre-school

Source : Educational Planning and Research Division (EMIS-Data as of 31 January)

1. PRE-SCHOOL

A) MOE Pre-schools

Table 1.1 Number of Pre-schools, Classes, Teachers and Enrolment in Pre-Schools (2012- 2014)

	2012	2013	2014
Pre-schools	5,857	5,941	5,943
Classes	8,544	8,786	8,939
Teachers	8,169	8,382	8,586
Enrolment	186,298	190,874	194,225

Source : Educational Planning and Research Division (EMIS-Data as of 31 January)

B) Other Agencies

Table 1.2 Number of Pre-Schools, Classes, Teachers and Enrolment in Private Institutions and Institutions Under Other Government Agencies (2014)

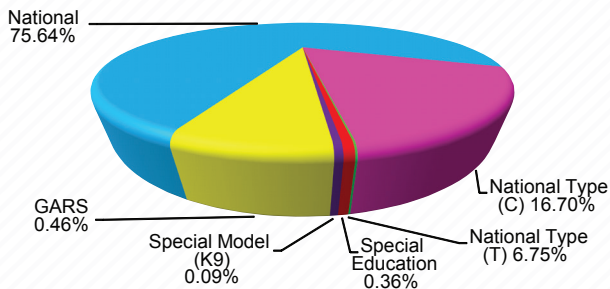
Agency	Pre-Schools	Classes	Teachers*	Enrolment
ABIM	241	530	640	9,991
JAIN	695	1,476	2,060	30,283
PERPADUAN	1,781	1,781	3,562	40,008
KEMAS	9,016	11,101	12,768	204,758
Private	6,859	25,360	32,725	203,081
TOTAL	18,592	40,248	51,755	488,121

Note : * Including Teacher Assistants

Source : ABIM, JAIN, PERPADUAN, KEMAS, Private Education Division, MOE
(Data as of 31 January 2014)

2. SCHOOLS - PRIMARY

Percentage of MOE Primary Schools (2014)



A) MOE Primary Schools

Table 2.1 Number of Primary Schools (2012-2014)

Type of Schools	2012			2013			2014		
	Urban	Rural	Total	Urban	Rural	Total	Urban	Rural	Total
National	1,408	4,451	5,859	1,409	4,449	5,858	1,411	4,452	5,863
National Type (C)	510	784	1,294	511	783	1,294	512	782	1,294
National Type (T)	145	378	523	145	378	523	145	378	523
Special Education	20	8	28	20	8	28	20	8	28
Special Model (K9)	0	1	1	0	5	5	0	7	7
Government Aided Religious School (GARS)	4	14	18	15	20	35	16	20	36
TOTAL	2,087	5,636	7,723	2,100	5,643	7,743	2,104	5,647	7,751

Source : Educational Planning and Research Division (EMIS-Data as of 31 January)

2. SCHOOLS - PRIMARY

Percentage of Classes in MOE Primary Schools (2014)

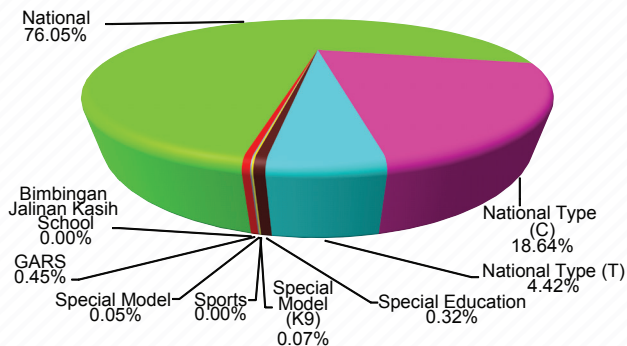


Table 2.2 Number of Classes in Primary Schools (2012-2014)

Type of Schools	2012	2013	2014
National	78,277	78,153	78,465
National Type (C)	19,311	19,088	19,239
National Type (T)	4,687	4,623	4,558
Special Education	340	335	329
Sports	1	2	2
Special Model (K9)	9	55	69
Special Model	48	48	51
Government Aided Religious School (GARS)	191	467	466
Bimbingan Jalinan Kasih*	0	0	2
TOTAL	102,864	102,771	103,181

- Notes : 1. Total number of classes excludes pre-school classes
 2. Special Model (K9) - Primary school with secondary level from Form 1 to 3
 3. Special Model - Secondary school with primary level from Year 4 to 6
 4. * Bimbingan Jalinan Kasih is a school specially established for street children in Kuala Lumpur.
- Source : Educational Planning and Research Division (EMIS -Data as of 31 January)

B) Other Agencies

Table 2.3 Number of Primary Schools in Private Institutions (2014)

Type of Schools	2014
Academic Primary	64
International Primary	4
Religious Primary	43
TOTAL	111

Note : Data as of 31 January 2014

Source : Private Education Division, MOE

Table 2.4 Number of Primary Schools in Institutions Under Other Government Agencies (2014)

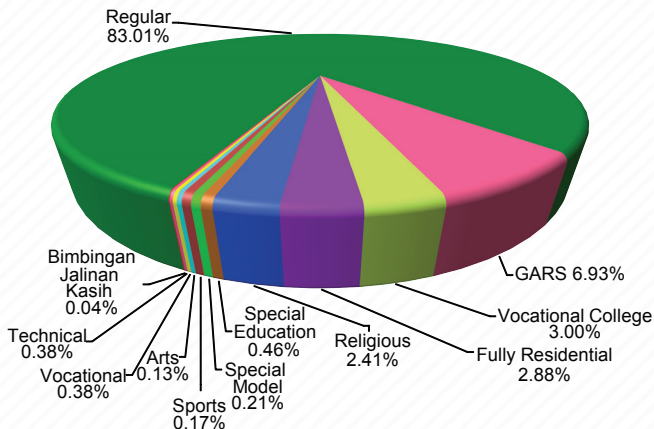
Type of Schools	2014
People Religious Primary School (SRAR)	54
State Religious Primary School (SRAN)	11
TOTAL	65

Note : Data as of 31 January 2014

Source : State Religious Department

2. SCHOOLS - SECONDARY

Percentage of MOE Secondary School (2014)



A) MOE Secondary Schools

Table 2.5 Number of Secondary Schools (2012-2014)

Type of Schools	2012			2013			2014		
	Urban	Rural	Total	Urban	Rural	Total	Urban	Rural	Total
Regular	967	961	1,928	975	972	1,947	981	983	1,964
Fully Residential	37	26	63	39	28	67	40	28	68
Religious	28	28	56	28	28	56	28	29	57
Technical	15	3	18	15	3	18	8	1	9
Vocational	40	30	70	40	30	70	4	5	9
Special Education	4	0	4	5	0	5	5	0	5
Special Model	3	8	11	3	8	11	3	8	11
Sports	2	0	2	4	0	4	4	0	4
Arts	2	0	2	2	0	2	3	0	3
Government Aided Religious School (GARS)	45	97	142	54	106	160	56	108	164
Bimbingan Jalinan Kasih	0	0	0	0	0	0	1	0	1
Vocational College	0	0	0	0	0	0	44	27	71
TOTAL	1,143	1,153	2,296	1,165	1,175	2,340	1,177	1,189	2,366

Source : Educational Planning and Research Division (EMIS-Data as of 31 January)

2. SCHOOLS - SECONDARY

Percentage of Classes in MOE Secondary Schools (2014)

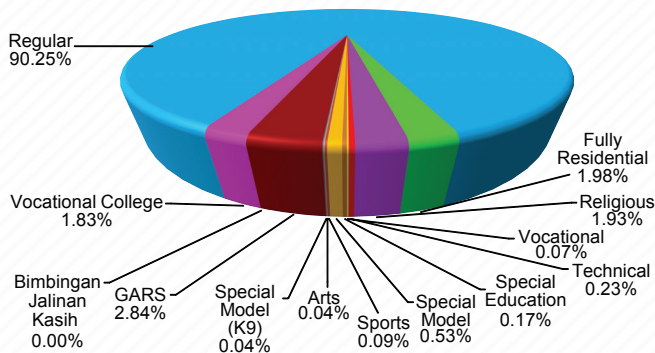


Table 2.6 Number of Classes in Secondary Schools (2012-2014)

Type of Schools	2012	2013	2014
Regular	68,544	69,310	69,824
Fully Residential	1,423	1,512	1,533
Religious	1,461	1,464	1,493
Technical	435	386	181
Vocational	1,604	1,250	93
Special Education	97	120	132
Special Model	393	401	407
Sports	52	63	69
Arts	29	29	33
Special Model (K9)	4	8	30
Government Aided Religious School (GARS)	1,842	2,117	2,201
Bimbingan Jalinan Kasih	0	0	1
Vocational College	0	0	1372
TOTAL	75,884	76,660	77,369

Notes : 1. Special Model (K9) - Primary school with secondary level from Form 1 to 3

2. Special Model - Secondary school with primary level from Year 4 to 6

Source : Educational Planning and Research Division (EMIS-Data as of 31 January)

B) Other Agencies

Table 2.7 Number of Secondary Schools in Private Institutions (2014)

Type of Schools	2014
Academic Secondary	64
Chinese Private Secondary	60
International Secondary	15
Religious Secondary	72
Correspondence Secondary School	2
TOTAL	213

Note : Data as of 31 January 2014

Source : Private Education Division, MOE

Table 2.8 Number of Secondary Schools in Institutions Under Other Government Agencies (2014)

Type of Schools	2014
People Religious Secondary School (SMAR)	89
State Religious Secondary School (SMAN)	81
MARA Junior Science Colleges (MJSC)	49
Royal Military College (RMC)	1
TOTAL	220

Note : Data as of 31 January 2014

Source : State Religious Department (SMAR, SMAN)

MARA

Royal Military College

Table 2.9 Number of Private Institutions With Two Levels (Primary and Secondary) (2014)

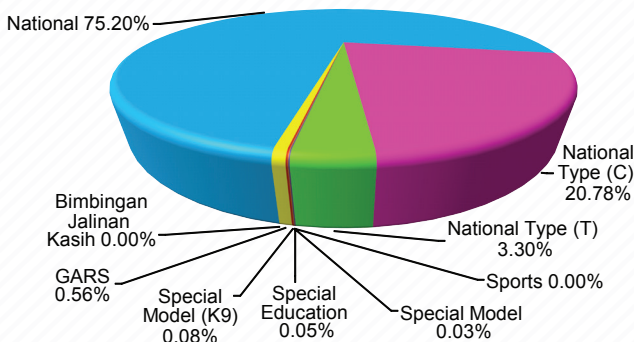
Type of Schools	2014
Expatriate	14
International	78
Special Education	11
TOTAL	103

Note : Data as of 31 January 2014

Source : Private Education Division, MOE

3. ENROLMENT - PRIMARY

Percentage of Enrolment in MOE Primary Schools (2014)



A) MOE Primary Schools

Table 3.1 Enrolment at Primary Level by Type of Schools (2012-2014)

Type of Schools	2012	2013	2014
National	2,106,603	2,063,666	2,029,658
National Type (C)	591,121	566,324	560,788
National Type (T)	97,884	92,919	89,007
Special Education	1,535	1,479	1,390
Sports	4	9	10
Special Model	1,014	901	912
Special Model (K9)	207	1,831	2,079
Government Aided Religious School (GARS)	6,037	15,040	14,988
Bimbingan Jalinan Kasih	0	0	51
TOTAL	2,804,405	2,742,169	2,698,883

Notes : 1. Excluding pre-school enrolment

2. Special Model (K9) - Primary school with secondary level from Form 1 to 3

3. Special Model - Secondary school with primary level from Year 4 to 6

4. Including enrolment of Year 4 to Year 6 students in Special Model and Sports School

5. Enrolment in Year 1 to Year 6 includes pupils in Special Education Integration Programme (SEIP)

Source : Educational Planning and Research Division (EMIS - Data as of 31 January)

3. ENROLMENT - PRIMARY

Percentage of Enrolment at Primary Level by Gender (2014)

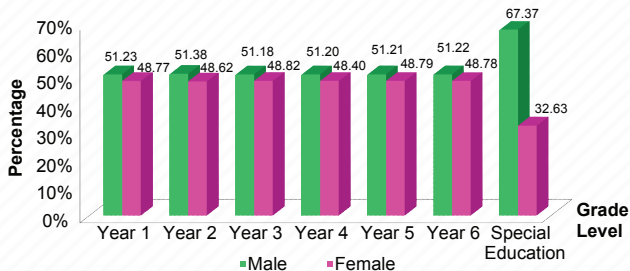


Table 3.2 Enrolment at Primary Level by Grade and Gender (2012-2014)

Grade Level	2012			2013			2014		
	Male	Female	Total	Male	Female	Total	Male	Female	Total
Year 1	225,914	214,574	440,488	225,496	213,381	438,877	225,660	214,797	440,457
Year 2	230,129	218,423	448,552	226,432	215,440	441,872	224,827	212,730	437,557
Year 3	230,913	218,701	449,614	230,352	219,008	449,360	224,708	214,376	439,084
Year 4	238,353	226,082	464,435	230,840	219,047	449,887	228,301	217,583	445,884
Year 5	239,885	228,689	468,574	238,241	226,737	464,978	228,559	217,740	446,299
Year 6	258,293	247,353	505,646	240,091	229,172	469,263	236,328	225,105	461,433
Special Education	18,035	9,061	27,096	18,737	9,195	27,932	18,977	9,192	28,169
TOTAL	1,441,522	1,362,883	2,804,405	1,410,189	1,331,980	2,742,169	1,387,360	1,311,523	2,698,883

Notes : 1. Excluding pre-school students

2. Including enrolment of Year 4 to Year 6 in Special Model Schools and Sports School

Source : Educational Planning and Research Division (EMIS - Data as of 31 January)

B) Other Agencies

Table 3.3 Enrolment at Primary Level in Private Institutions (2014)

Type of Schools	2014		
	Male	Female	Total
Academic Primary	7,659	6,578	14,237
International Primary	849	768	1,617
Religious Primary	11,021	8,621	19,642
TOTAL	19,529	15,967	35,496

Note : Data as of 31 January 2014

Source : Private Education Division, MOE

Table 3.4 Enrolment at Primary Level in Institutions Under Other Government Agencies (2014)

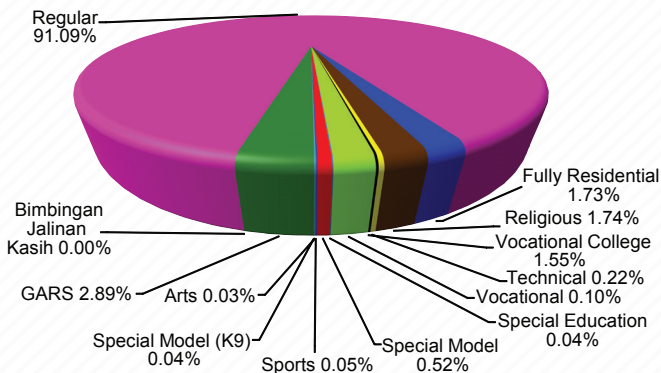
Type of Schools	2014		
	Male	Female	Total
People Religious Primary School (SRAR)	6,293	5,156	11,449
State Religious Primary School (SRAN)	3,183	3,450	6,633
TOTAL	9,476	8,606	18,082

Note : Data as of 31 January 2014

Source : State Religious Department

3. ENROLMENT - SECONDARY

Percentage of Enrolment at MOE Secondary Schools 2014



A) MOE SECONDARY SCHOOLS

Table 3.5 Enrolment at Secondary Level by Type of Schools (2012-2014)

Type of Schools	2012	2013	2014
Regular	2,087,689	2,100,737	2,035,649
Fully Residential	37,202	39,069	38,642
Religious	39,088	39,283	38,975
Technical	10,777	9,862	4,856
Vocational	38,756	31,055	2,301
Special Education	644	701	789
Special Model	11,709	11,868	11,669
Sports	850	1,028	1,184
Arts	533	535	644
Special Model (K9)	121	233	792
Government Aided Religious School (GARS)	53,855	61,818	64,508
Bimbingan Jalinan Kasih	0	0	33
Vocational College	0	0	34,579
TOTAL	2,281,224	2,296,189	2,234,621

Notes : 1. Excluding pre-school enrolment in secondary schools

2. Most vocational secondary schools have been converted to vocational colleges

Source : Educational Planning and Research Division (EMIS - Data as of 31 January)

Table 3.6 Enrolment at Secondary Level by Grade, Academic Streams and Gender (2012-2014)

Grade	2012			2013			2014		
	Male	Female	Total	Male	Female	Total	Male	Female	Total
Lower Secondary									
Special Education (Form 1 - Form 3)	13,289	6,782	20,071	14,499	7,061	21,560	15,570	7,408	22,978
Remove Class	17,091	10,093	27,184	19,004	11,008	30,012	14,830	8,447	23,277
Form 1	227,043	220,282	447,325	230,089	228,139	458,228	217,218	212,055	429,273
Form 2	219,531	215,138	434,669	221,164	215,798	436,962	222,769	222,250	445,019
Form 3	223,474	223,023	446,497	215,293	213,911	429,204	213,772	212,159	425,931
Total	700,428	675,318	1,375,746	700,049	675,917	1,375,966	684,159	662,319	1,346,478
Upper Secondary									
Form 4									
Form 4 Special Education	48	41	89	99	50	149	104	71	175
Form 4 Arts	114,077	104,830	218,907	119,099	106,384	225,483	114,516	101,103	215,619
Form 4 Science	53,433	75,126	128,559	53,528	74,821	128,349	50,583	70,716	121,299
Form 4 Religious	4,936	7,394	12,330	5,936	8,564	14,500	6,119	9,120	15,239
Form 4 Vocational/Technology	29,146	27,054	56,200	28,814	26,762	55,576	27,566	25,221	52,787
Form 4 Vocational	10,178	4,572	14,750	6,809	3,039	9,848	291	146	437
Form 4 Technical	2,730	2,007	4,737	1,696	1,443	3,139	1,255	903	2,158
Year 1 Vocational College	0	0	0	0	0	0	9,119	4,706	13,825
Year 1 Skills Training (NVTC)	3,043	519	3,562	2,419	456	2,875	345	12	357
Total	217,591	221,543	439,134	218,400	221,519	439,919	209,898	211,998	421,896
Form 5									
Form 5 Special Education	73	63	136	57	49	106	114	68	182
Form 5 Arts	101,864	99,478	201,342	105,460	101,406	206,866	106,653	101,245	207,898
Form 5 Science	51,172	72,115	123,287	50,393	71,936	122,329	49,588	70,838	120,426
Form 5 Religious	4,470	6,872	11,342	4,915	7,564	12,479	5,336	8,340	13,676
Form 5 Vocational/Technology	27,350	25,822	53,172	26,602	26,124	52,726	25,804	26,191	51,995
Form 5 Vocational	11,029	5,354	16,383	10,558	4,961	15,519	264	179	443
Form 5 Technical	3,507	2,531	6,038	2,894	2,161	5,055	1,903	1,503	3,406
Year 2 Vocational College	0	0	0	0	0	0	9,944	5,344	15,288
Year 2 Skills Training (NVTC)	3,039	394	3,433	2,937	432	3,369	2,436	296	2,732
Short / Special Skill Course	247	39	286	396	309	705	21	0	21
Total	202,751	212,668	415,419	204,212	214,942	419,154	202,063	214,004	416,067
Post-Secondary									
Form 6 Lower
Arts	0	0	0	0	0	0	0	0	0
Science	0	0	0	0	0	0	0	0	0
Religious	234	507	741	259	516	775	396	749	1,145
Year 3 Vocational College	0	0	0	0	0	0	2,119	698	2,817
Year 1 Pre-university	37	28	65	25	14	39	87	44	131
Form 6 Upper									
Form 6 Upper Special Education	14	10	24	4	4	8	7	5	12
Arts	13,510	26,572	40,082	15,958	32,474	48,432	11,691	24,593	36,284
Science	3,528	4,386	7,914	3,989	5,377	9,366	3,299	4,206	7,505
Religious	795	1,262	2,057	879	1,600	2,479	796	1,391	2,187
Year 2 Pre-university	23	19	42	28	23	51	78	21	99
Total	18,141	32,784	50,925	21,142	40,008	61,150	18,473	31,707	50,180
TOTAL	1,138,911	1,142,313	2,281,224	1,143,803	1,152,386	2,296,189	1,114,593	1,120,028	2,234,621

Notes : 1. Including enrolment of Form 1 to 3 students in Comprehensive Special Model (K9) Schools

2. Excluding pre-schools students in secondary schools

3. Data for Form 6 Lower is not available (...) because Form 6 Lower begins in April

Source : Educational Planning and Research Division (EMIS - Data as of 31 January)

B) Other Agencies

Table 3.7 Enrolment at Secondary Level in Private Institutions (2014)

Type of Schools	2014		
	Male	Female	Total
Academic Secondary	9,119	7,494	16,613
Chinese Private Secondary	44,098	39,782	83,880
International Secondary	3,204	2,897	6,101
Religious Secondary	5,343	4,430	9,773
Correspondence Secondary School	0	0	0
TOTAL	61,764	54,603	116,367

Note : Data as of 31 January 2014
Source : Private Education Division, MOE

Table 3.8 Enrolment at Secondary Level in Institutions Under Other Government Agencies (2014)

Type of Schools	2014		
	Male	Female	Total
People Religious Secondary School (SMAR)	14,979	11,604	26,583
State Religious Secondary School (SMAN)	19,151	24,337	43,488
MARA Junior Science Colleges (MJSC)	9,686	11,627	21,313
Royal Military College (RMC)	497	0	497
TOTAL	44,313	47,568	91,881

Note : Data as of 31 January 2014
Source : 1. State Religious Department (SMAR/SMAN)
2. MARA
3. Royal Military College

Table 3.9 Enrolment in Private Institutions with Two Levels (Primary and Secondary)(2014)

Type of Schools	2014		
	Male	Female	Total
Expatriate	2,436	2,318	4,754
International	16,671	15,073	31,744
Special Education	475	322	797
TOTAL	19,582	17,713	37,295

Note : Data as of 31 January 2014
Source : Private Education Division, MOE

C) MATRICULATION

Table 3.10 Matriculation : Number of Colleges, Academic Personnel and Enrolment (2011 - 2013)

	2011*	2012**	2013***
Number of Matriculation Colleges	13	13	14
Number of Academic Personnel	2,264	2,270	3,026
% Female	65.70	65.20	64.09
Total Enrolment	21,473	22,540	24,249
% Female	68.00	70.00	71.00

Notes : * Data as of 15 March 2012
** Data as of 31 December 2012
*** Data as of 31 December 2013
Source : Matriculation Division, MOE

4 : SPECIAL EDUCATION

Table 4.1 Enrolment in Special Education Schools by Grade and Gender (2012 - 2014)

Grade	2012			2013			2014		
	Male	Female	Total	Male	Female	Total	Male	Female	Total
Primary									
CFLD	40	29	69	59	38	97	57	42	99
Preschool	55	36	91	54	31	85	60	47	107
Year 1	123	112	235	127	102	229	112	82	194
Year 2	69	57	126	79	62	141	84	70	154
Year 3	91	73	164	79	58	137	76	64	140
Year 4	137	98	235	99	84	183	93	68	161
Year 5	194	176	370	147	104	251	104	73	177
Year 6	181	155	336	228	213	441	268	197	465
Total	890	736	1,626	872	692	1,564	854	643	1,497
Secondary									
CFLD	0	0	0	0	0	0	0	0	0
Form 1	21	32	53	33	20	53	31	37	68
Form 2	31	28	59	21	30	51	31	19	50
Form 3	25	24	49	28	27	55	20	30	50
Form 4	111	87	198	133	121	254	127	109	236
Form 5	167	116	283	153	130	283	217	168	385
Total	355	287	642	368	328	696	426	363	789
Post Secondary									
Form 6 Upper	0	2	2	1	4	5	0	0	0
Total	0	2	2	1	4	5	0	0	0
GRAND TOTAL	1,245	1,025	2,270	1,241	1,024	2,265	1,280	1,006	2,286

Note : Class for Learning Disabilities (CFLD) refers to a special class for students with learning disabilities in regular schools

Source : Educational Planning and Research Division (EMIS - Data as of 31 January)

Table 4.2 Number of Classes, Enrolment and Teachers in Special Education Integration Programme (2012-2014)

	2012			2013			2014		
	Pre-school	Primary	Secondary	Pre-school	Primary	Secondary	Pre-school	Primary	Secondary
Class	136	4,208	2,795	141	4,488	3,029	142	4,655	3,240
Enrolment	490	27,096	20,320	494	28,455	22,710	517	28,658	24,268
Teacher	235	7,980	3,999	171	8,301	4,197	191	8,583	4,535

Note : Special Education Integration Programme refers to a programme for students with disabilities in regular schools

Source : Educational Planning and Research Division (EMIS - Data as of 31 January)

Table 4.3 Enrolment in Special Education Integration Programme by Grade (2012-2014)

Grade	2012	2013	2014
Primary			
CFLD	26,556	27,932	28,169
Year 1	130	104	123
Year 2	64	76	56
Year 3	67	73	68
Year 4	82	61	63
Year 5	113	76	61
Year 6	84	133	118
Total	27,096	28,455	28,658
Secondary			
CFLD	19,113	21,560	22,978
Remove	50	20	40
Form 1	328	312	332
Form 2	293	279	296
Form 3	287	276	253
Form 4	89	149	175
Form 5	136	106	182
Total	20,296	22,702	24,256
Post Secondary			
Form 6 (Lower)	0	0	0
Form 6 (Upper)	24	8	12
Total	24	8	12
GRAND TOTAL*	47,416	51,165	52,926
Inclusive	562	1,668	2,226
Pre-school	490	494	517

Notes : 1. Inclusive - Students with physical disabilities (e.g hearing or visually impaired) in a regular classroom.

2. * Grand Total does not include enrolment in the Inclusive and Pre-school category. Enrolment in the Inclusive category has been included in the primary and secondary section.

Source : Educational Planning and Research Division (EMIS - Data as of 31 January)

5 : TEACHERS - PRIMARY

A) MOE Primary Schools

Table 5.1 Number of Teachers at Primary Level by Type of Training (2014)

Type of Schools	Graduate	Non-Graduate	Untrained	Total
National	96,432	91,203	3,947	191,582
National Type (C)	13,949	21,506	1,970	37,425
National Type (T)	4,061	4,892	296	9,249
Special Education	428	363	8	799
Government Aided Religious School (GARS)	393	594	126	1,113
Special Model	155	55	7	217
TOTAL	115,418	118,613	6,354	240,385

- Notes : 1. Graduates - Teachers who have a degree
 2. Non-Graduates - Teachers who have a teaching certificate/diploma
 3. Untrained - include contract teachers

Data do not include :

- (i) Teachers seconded to semi-government agencies, state religious schools, and other agencies;
 (ii) Teachers on study leave with full-pay or half-pay; and
 (iii) Teachers in common posts pending re-deployment.

Source : Educational Planning and Research Division (EMIS - Data as of 31 January 2014)

Percentage of Primary School Teachers by Gender (2012 - 2014)

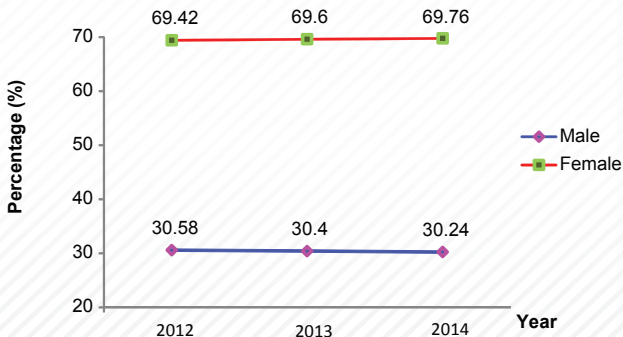


Table 5.2 Number and Percentage of Teachers at Primary Level by Gender (2012 - 2014)

Gender	2012	%	2013	%	2014	%
Male	72,266	30.58	72,713	30.40	72,701	30.24
Female	164,047	69.42	166,462	69.60	167,684	69.76
TOTAL	236,313	100.00	239,175	100.00	240,385	100.00

Source : Educational Planning and Research Division (EMIS - Data as of 31 January)

Percentage of Primary School Teachers by Gender and Age Group (2014)

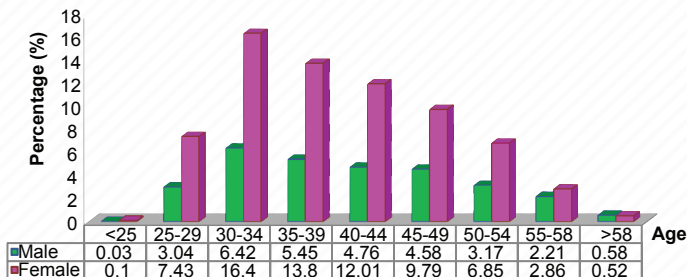


Table 5.3 Number of Teachers at Primary Level by Gender and Age Group (2014)

Age Group	<25	25-29	30-34	35-39	40-44	45-49	50-54	55-58	>58	TOTAL
Male	83	7,303	15,433	13,099	11,430	11,018	7,625	5,324	1,386	72,701
Female	242	17,861	39,422	33,176	28,872	23,538	16,455	6,879	1,239	167,684
TOTAL	325	25,164	54,855	46,275	40,302	34,556	24,080	12,203	2,625	240,385

Source : Educational Planning and Research Division (EMIS - Data as of 31 January 2014)

B) Other Agencies

Table 5.4 Number of Teachers at Primary Level in Private Institutions (2014)

Type of Schools	2014
Academic Primary	1,557
International Primary	339
Religious Primary	1,394
TOTAL	3,290

Note : Data as of 31 January 2014

Source : Private Education Division, MOE

Table 5.5 Number of Teachers at Primary Level in Institutions Under Other Government Agencies (2014)

Type of Schools	2014
People Religious Primary School (SRAR)	788
State Religious Primary School (SRAN)	571
TOTAL	1,359

Note : Data as of 31 January 2014

Source : State Religious Department

5 : TEACHERS - SECONDARY

A) MOE Secondary Schools

Table 5.6 Number of Teachers at Secondary Level by Type of Training (2014)

Type of Schools	Graduate	Non-Graduate	Untrained	Total
Regular	150,000	7,394	187	157,581
Fully Residential	4,016	65	9	4,090
Religious	3,550	123	7	3,680
Technical	589	4	2	595
Vocational	606	18	0	624
Special Education	292	16	0	308
Special Model	974	59	4	1,037
Sports	269	10	1	280
Arts	130	5	13	148
Bimbingan Jalanan Kasih	16	0	0	16
Government Aided Religious School (GARS)	3,849	846	833	5,528
Vocational College	5,728	837	17	6,582
TOTAL	170,019	9,377	1,073	180,469

- Notes : 1. Graduates - Teachers who have a degree
 2. Non-Graduates - Teachers who have a teaching certificate/diploma
 3. Untrained - include contract teachers
 4. Data do not include :
 (i) Teachers seconded to semi-government agencies, state religious schools, and other agencies;
 (ii) Teachers on study leave with full-pay or half-pay; and
 (iii) Teachers in common posts pending re-deployment.

Source : Educational Planning and Research Division (EMIS - Data as of 31 January 2014)

Percentage of Secondary School Teachers by Gender (2012-2014)

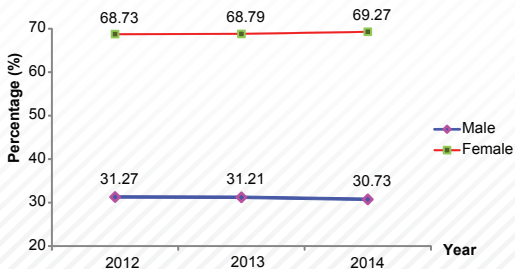


Table 5.7 Number and Percentage of Teachers at Secondary Level by Gender (2012 - 2014)

Gender	2012	%	2013	%	2014	%
Male	55,155	31.27	55,204	31.21	55,457	30.73
Female	121,252	68.73	121,677	68.79	125,012	69.27
TOTAL	176,407	100.00	176,881	100.0	180,469	100.00

Source : Educational Planning and Research Division (EMIS - Data as of 31 January)

Percentage of Secondary School Teachers by Gender and Age Group (2014)

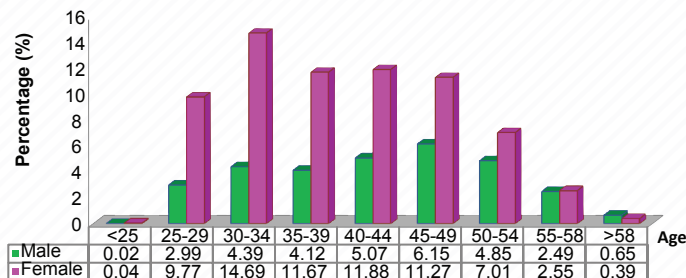


Table 5.8 Number of Teachers at Secondary Level by Gender and Age Group (2014)

Age Group	<25	25-29	30-34	35-39	40-44	45-49	50-54	55-58	>58	TOTAL
Male	38	5,404	7,927	7,433	9,154	11,093	8,748	4,495	1165	55,457
Female	73	17,626	26,521	21,064	21,435	20,334	12,651	4,596	712	125,012
TOTAL	111	23,030	34,448	28,497	30,589	31,427	21,399	9,091	1,877	180,469

Source : Educational Planning and Research Division (EMIS - Data as of 31 January 2014)

B) Other Agencies

Table 5.9 Number of Teachers at Secondary Level in Private Institutions (2014)

Type of Schools	2014
Academic Secondary	1,817
Chinese Private Secondary	4,190
International Secondary	478
Religious Secondary	871
Correspondence Secondary School	0
TOTAL	7,356

Note : Data as of 31 January 2014

Source : Private Education Division, MOE

Table 5.10 Number of Teachers at Secondary Level in Institutions Under Other Government Agencies (2014)

Type of Schools	2014
People Religious Secondary School (SMAR)	1,922
State Religious Secondary School (SMAN)	3,320
MARA Junior Science Colleges (MJSC)	3,171
Royal Military College (RMC)	45
TOTAL	8,458

Note : Data as of 31 January 2014

Source : 1. State Religious Department (SMAR, SMAN)

2. MARA

3. Royal Military College

Table 5.11 Number of Teachers in Private Institutions with Two Levels (Primary and Secondary) (2014)

Type of Schools	2014
Expatriate	419
International	3,564
Special Education	157
TOTAL	4,140

Note : Data as of 31 January 2014

Source : Private Education Division, MOE

6 : PUBLIC EXAMINATIONS

Table 6.1 Primary School Achievement Test (UPSR) (2011-2013)

	2011	2012	2013
Number of Candidates	485,160	503,928	466,167
Number of Candidates with Minimum Competency Level*	315,033	331,984	305,028
% of Candidates with Minimum Competency Level	64.93	65.88	65.43
Number of Candidates with all 'A's**	46,012	45,054	42,646
% of Candidates with all 'A's	9.48	8.94	9.15

Note : * Candidates obtaining grades A, B or C in all subjects taken i.e. five subjects for National Schools and seven subjects for National Type (C) and (T) Schools.

** A total of 5'A's for candidates in National Schools and 7'A's for candidates in National Type (C) and (T) School.

Source : Examination Syndicate, MOE

Table 6.2 Lower Secondary Assessment (PMR) (2011-2013)

	2011	2012	2013
Number of Candidates*	441,137	440,643	422,506
Number of Candidates with Minimum Competency Level	307,237	303,573	298,706
% of Candidates with Minimum Competency Level	69.65	68.89	70.70
Number of Candidates with all 'A's	34,271	30,474	30,988
% of Candidates with all 'A's	7.77	6.92	7.33

Note : * Only candidates from Government Schools, Government-Aided Schools and Government-Aided Religious Schools

Source : Examination Syndicate, MOE

Table 6.3 Lower Secondary Assessment (PMR) for Private Candidates and Candidates from Other Government Agencies (2011-2013)

	MRSM and Royal Military College			SMAN			SMAR			Private Schools			Private Candidates		
	2011	2012	2013	2011	2012	2013	2011	2012	2013	2011	2012	2013	2011	2012	2013
Number of Candidates	5,341	5,843	6,023	10,517	9,991	9,847	1,754	2,181	2,188	13,909	13,606	13,519	637	1,094	972
Number of Candidates with Minimum Competency Level	5,321	5,824	6,016	7,455	6,893	7,304	698	843	874	10,254	9,981	9,991	276	513	475
% of Candidates with Minimum Competency Level	99.63	99.67	99.88	70.89	68.99	74.17	39.80	38.65	39.95	73.72	73.36	73.90	43.30	46.89	48.87
Number of Candidates with all 'A's	3,660	3,284	3,714	853	657	811	8	17	36	1,039	1,101	1,113	4	18	13
% of Candidates with all 'A's	68.53	56.20	61.66	8.11	6.58	8.24	0.46	0.78	1.65	7.47	8.09	8.23	0.63	1.65	1.34

Source : Examination Syndicate, MOE

Table 6.4 Malaysian Certificate of Education (SPM) (2011-2013)

	2011	2012	2013
Number of Candidates*	406,305	410,140	409,466
Number of Passes **	370,396	373,250	349,383
% of Passes	91.16	91.01	85.33

Notes : * Only candidates from Government Schools, Government-Aided Schools and Government-Aided Religious Schools.

** Students qualify for a certificate, provided they have a minimum pass (Grade E) in both Bahasa Melayu and History.

Source : Examination Syndicate, MOE

Table 6.5 Malaysian Certificate of Education (SPM) for Private Candidates (2011-2013)

	2011	2012**	2013
Number of Private Candidates*	39,951	31,518	33,122
Number of Passes***	36,242	26,812	29,107
% of Passes	90.72	85.07	87.88

Notes : * Candidates include students enrolled in private schools and private candidates

** Data includes only those who have taken ≥ 6 subjects

*** Students qualify for a certificate, provided they have a minimum pass (Grade E) in both Bahasa Melayu and History.

Source : Examination Syndicate, MOE

Table 6.6 Malaysian Higher School Certificate (STPM) (2011-2013)

	2011	2012	2013
Number of Registered Candidates	53,687	54,645	58,347
Number of Candidates Present	50,657	51,673	55,224
Number of Passes (based on the minimum CGPA of 2.0)	32,791	33,806	46,229
% of Passes (based on the minimum CGPA of 2.0)	64.73	65.42	83.71
Number of Passes (minimum full pass for one subject)	46,647	47,884	53,483
% of Passes (minimum full pass for one subject)	92.18	92.67	96.85

Source : Malaysian Examination Council, MOE

Table 6.7 Malaysian Higher School Certificate (STPM) for Private Candidates (2011-2013)

	2011	2012	2013
Number of Registered Candidates	5,249	5,378	620
Number of Candidates Present	3,683	3,906	270
Number of Passes (based on the minimum CGPA of 2.0)	1,257	1,259	40
% of Passes (based on the minimum CGPA of 2.0)	34.13	32.23	14.81
Number of Passes (minimum full pass for one subject)	2,575	2,778	156
% of Passes (minimum full pass for one subject)	69.92	71.12	57.77

Source : Malaysian Examination Council, MOE.

Table 6.8 Malaysian Higher Religious Education Certificate (STAM) (2011-2013)

	2011	2012	2013
Number of Candidates*	2,609	2,891	3,029
Number of Passes	1,794	2,066	1,975
% of Passes	68.76	71.46	65.20

Note : * Only candidates from Government Schools and Government-Aided Religious Schools

Source : Examination Syndicate, MOE

Table 6.9 Malaysian Higher Religious Education Certificate (STAM) for Private Candidates and Candidates from Other Government Agencies (2011-2013)

	SMAN			SMAR			Private Schools			Private Candidates		
	2011	2012	2013	2011	2012	2013	2011	2012	2013	2011*	2012**	2013
Number of Candidates	2,019	2,152	2,009	535	564	577	33	47	45	1,388	164	1,125
Number of Passes	1,293	1,489	1,262	256	259	204	22	36	20	631	75	563
% of Passes	64.0	69.19	62.82	47.9	45.92	35.36	66.7	76.60	44.44	45.5	45.73	50.04

Notes : * Data includes repeaters

** Data for private candidates include those who have registered for STAM for the first time with 10 compulsory subjects.

Source : Examination Syndicate, MOE

7: TEACHER EDUCATION

Table 7.1 Number of Institutions, Academic Personnel and Enrolment in Institutes of Teacher Education (ITE) (2012-2014)

	2012*	2013**	2014***
Number of Institutes of Teacher Education	27	27	27
Academic Personnel	3,192	3,616	3,489
% Female	44.55	45.24	45.43
Total Enrolment	41,507	46,491	37,846
% Female	72.26	71.96	71.70

Notes : * Data as of : 30 October 2012

** Data as of : 28 February 2013

*** Data as of : 31 January 2014

Source : Institute of Teacher Education Malaysia

Table 7.2 Enrolment and Academic Personnel in Institutes of Teacher Education (2014)

Institute of Teacher Education	Enrolment			Academic Personnel		
	Male	Female	Total	Male	Female	Total
1 IPGM Kampus Perlis	487	904	1,391	78	53	131
2 IPGM Kampus Darul Aman	497	1,221	1,718	108	78	186
3 IPGM Kampus Sultan Abdul Halim	430	1,641	2,071	110	74	184
4 IPGM Kampus Pulau Pinang	372	1,028	1,400	75	93	168
5 IPGM Kampus Tuanku Bainun	423	1,225	1,648	104	56	160
6 IPGM Kampus Ipoh	618	1,695	2,313	122	80	202
7 IPGM Kampus Bahasa Melayu	344	992	1,336	38	63	101
8 IPGM Kampus Bahasa Antarabangsa	291	728	1,019	30	58	88
9 IPGM Kampus Ilmu Khas	314	825	1,139	70	123	193
10 IPGM Kampus Pendidikan Teknik	298	600	898	65	104	169
11 IPGM Kampus Pendidikan Islam	508	1,260	1,768	61	90	151
12 IPGM Kampus Raja Melewar	547	1,661	2,208	90	98	188
13 IPGM Kampus Perempuan Melayu	159	952	1,111	75	78	153
14 IPGM Kampus Tun Hussein Onn	513	1,547	2,060	96	78	174
15 IPGM Kampus Temenggong Ibrahim	530	1,551	2,081	79	77	156
16 IPGM Kampus Tengku Ampuan Kasim	466	1,358	1,824	87	33	120
17 IPGM Kampus Dato' Razali Ismail	498	1,236	1,734	85	45	130
18 IPGM Kampus Sultan Mizan	379	640	1,019	96	18	114
19 IPGM Kampus Kota Bharu	623	1,332	1,955	109	53	162
20 IPGM Kampus Gaya	283	651	934	55	40	95
21 IPGM Kampus Kent	264	557	821	49	35	84
22 IPGM Kampus Tawau	240	346	586	41	24	65
23 IPGM Kampus Keningau	282	435	717	36	15	51
24 IPGM Kampus Batu Lintang	372	918	1,290	55	51	106
25 IPGM Kampus Sarawak	326	613	939	24	25	49
26 IPGM Kampus Rajang	291	532	823	19	15	34
27 IPGM Kampus Tun Abdul Razak	354	689	1,043	47	28	75
TOTAL	10,709	27,137	37,846	1,904	1,585	3,489

Note : IPGM - Institut Pendidikan Guru Malaysia (Institute of Teacher Education Malaysia)

Source : Institute of Teacher Education, MOE (Data as of 31 January 2014)

8: TERTIARY EDUCATION - HIGHER EDUCATION SECTOR

Table 8.1 Number of Public Universities and Enrolment

Public Universities	Enrolment
1 Universiti Malaya (UM)	27,091
2 Universiti Sains Malaysia (USM)	29,065
3 Universiti Kebangsaan Malaysia (UKM)	30,041
4 Universiti Putra Malaysia (UPM)	32,092
5 Universiti Teknologi Malaysia (UTM)	33,361
6 Universiti Utara Malaysia (UUM)	30,837
7 Universiti Islam Antarabangsa Malaysia (UIAM)	32,086
8 Universiti Malaysia Sarawak (UNIMAS)	17,198
9 Universiti Malaysia Sabah (UMS)	25,207
10 Universiti Pendidikan Sultan Idris (UPSI)	27,659
11 Universiti Teknologi MARA (UiTM)	189,551
12 Universiti Sultan Zainal Abidin (UniSZA)	7,977
13 Universiti Malaysia Terengganu (UMT)	8,715
14 Universiti Sains Islam Malaysia (USIM)	13,022
15 Universiti Tun Hussein Onn Malaysia (UTHM)	15,319
16 Universiti Teknikal Malaysia Melaka (UTeM)	12,593
17 Universiti Malaysia Pahang (UMP)	8,904
18 Universiti Malaysia Perlis (UniMAP)	10,415
19 Universiti Malaysia Kelantan (UMK)	6,443
20 Universiti Pertahanan Nasional Malaysia (UPNM)	2,783
TOTAL	560,359

Notes : 1. Data as of 21 May 2014

2. Includes Matriculation, Professional, Certificate and Pre-Session

Source : Planning, Research and Policy Coordination Division, Higher Education Sector, MOE

Table 8.2 Entrants, Enrolment and Graduates at Public Universities by Fields of Study and Gender

Fields of Study	Entrants		Enrolment		Graduate	
	M	F	M	F	M	F
Education	2,930	6,916	14,946	35,462	3,027	9,594
Arts and Humanities	5,913	9,874	18,382	30,932	3,807	6,684
Social Sciences, Business and Law	21,440	43,768	64,070	130,775	13,211	31,503
Science, Mathematics and Computer	10,183	18,769	29,422	49,755	5,600	10,294
Engineering, Manufacturing and Construction	20,409	16,634	69,047	52,415	15,170	12,162
Agriculture and Veterinary	2,131	2,787	5,692	7,392	1,342	1,884
Health and Welfare	2,333	6,662	9,499	23,869	1,899	5,142
Services	2,908	4,083	7,200	11,001	1,830	2,833
General Programmes	228	450	167	333	23	12
TOTAL	68,475	109,943	218,425	341,934	45,909	80,108

Notes : Data as of 21 May 2014

Source : Planning, Research and Policy Coordination Division, Higher Education Sector, MOE

Table 8.3 Percentage and Ratio of Students at Public Higher Education Institutes by Gender

Male		Female		Enrolment	Student Ratio
Number	%	Number	%		
218,425	38.98	341,934	61.02	560,359	0.64 :1

Table 8.4 Enrolment and Percentage of International Students at Public Higher Education Institutes

Local Student	%	International Student	%	Total
531,522	94.85	28,837	5.15	560,359

Table 8.5 Enrolment and Percentage of Graduates at Public Higher Education Institutes

Under Graduate	% Under Graduate	Post Graduate	% Post Graduate	Others	% Others	Total
436,338	77.87	94,952	16.94	29,069	5.19	560,359

- Notes : 1. Undergraduate includes Diploma, Advanced Diploma and Degree
 2. Postgraduate includes Postgraduate Diploma, Master and PhD
 3. Others includes Matriculation, Professional, Certificate and Pre-Session

Table 8.6 Academic Staff and Student Ratio at Public Higher Education Institutes

Academic Staff (A)	Enrolment (B)	Ratio(A:B)
34,017	560,359	1 : 16.47

- Note : Data as of 21 May 2014
 Source : Planning, Research and Policy Coordination Division, Higher Education Sector, MOE

9 : EDUCATIONAL EXPENDITURE

Table 9.1 Percentage of Actual Total Educational Expenditure Against Total Government Expenditure (2012-2014)

	Percentage (%)		
	2012*	2013*	2014**
Educational Expenditure to Government Expenditure	15.63	18.61	20.67

- Notes : 1. * Data has been revised by Finance Division, MOE
 2. ** Data for 2014 indicate estimated figures
 3. Educational expenditure includes Capital and Recurrent Expenditure
 4. Government Expenditure for 2013 is based on estimate. Actual expenditure has not been provided by Ministry of Finance

Source : Finance Division, MOE

Table 9.2 Actual Educational Capital and Recurrent Expenditure at Current Price (2012-2014)

	RM (Millions)		
	2012*	2013*	2014**
Capital	3,550	4,063	4,035
Recurrent Expenditure	36,285	42,765	50,565
TOTAL	39,835	46,828	54,600

- Notes : 1. * Data has been revised by Finance Division, MOE
 2. ** Data for 2014 indicate estimated figures

Source : Finance Division, MOE

Table 9.3 Percentage of Actual Educational Capital and Recurrent Expenditure (2012-2014)

	Percentage (%)		
	2012*	2013*	2014**
Capital	8.91	8.68	7.39
Recurrent Expenditure	91.09	91.32	92.61

- Notes : 1. * Data has been revised by Finance Division, MOE
 2. ** Data for 2014 indicate estimated figures

Source : Finance Division, MOE

Table 9.4 Actual Educational Recurrent Expenditure by Category (2012-2014)

Category	RM (Millions)		
	2012*	2013*	2014**
Emolument	28,517.44	28,961.41	30,401.00
Services & Supply	3,744.59	4,714.86	5,050.31
Asset	260.06	242.16	238.14
Fixed Charges & Grants	3,762.50	8,846.16	14,875.14
Other Expenditure	1.32	0.66	0.86
TOTAL	36,285.91	42,765.25	50,565.45

Notes : 1. * Data has been revised by Finance Division, MOE

2. ** Data for 2014 indicate estimated figures

Source : Finance Division, MOE

Table 9.5 Percentage of Recurrent Educational Expenditure by Category (2012-2014)

Category	Percentage (%)		
	2012*	2013*	2014**
Emolument	78.59	67.72	60.12
Services & Supply	10.32	11.02	9.99
Asset	0.72	0.57	0.47
Fixed Charges & Grants	10.37	20.69	29.42
Other Expenditure	0.00	0.00	0.00

Notes : 1. * Data has been revised by Finance Division, MOE

2. ** Data for 2014 indicate estimated figures

Source : Finance Division, MOE

10. ECONOMIC INDICATORS

Table 10.1 Economic Indicators (2012 - 2014)

	2012*	2013 ^p	2014 ^{af}
GDP: Real Growth Rate (%)	5.60	4.70	4.5 - 5.5
GNP: Per Capita (USD)	9,928	10,060	10,337
GDP Composition by Sector (% of growth)			
Agriculture, forestry and fishing	1.00	2.10	3.80
Mining and quarrying	1.40	0.50	1.60
Manufacturing	4.80	3.40	3.50
Construction	18.10	10.90	10.00
Services (including government services)	6.40	5.90	6.20
Inflation Rate [CPI] (%)	1.60	2.1	3.0-4.0
Federal Government Finance (USD billion)			
Revenue	67.4	67.3	67.8
Expenditure	81.8	80.9	79.3
Employment by Sector (% of share)	2012	2013 ^p	2014 ^f
Agriculture, forestry and fishing	12.71	12.34	12.00
Mining and quarrying	0.64	0.63	0.62
Manufacturing	17.67	17.64	17.68
Construction	9.23	9.13	8.95
Services	59.75	60.26	60.75
Unemployment rate (%)	3.00	3.10	3.10
Labour Force (million persons)	13.00	13.39	13.75

Notes : 1. * Data has been revised by MOF

2. ^fForecast3. ^pPreliminary

Source : Ministry of Finance (MOF), Bank Negara Malaysia, Economic Planning Unit

11 : DEMOGRAPHIC INDICATORS

Table 11.1 Population by Age Group (2012 - 2013)

Age Group	2012 (Number in Millions)		2013 (Number in Millions)	
	Number	Percentage	Number	Percentage
0-4	2.54	8.62	2.58	8.61
5-9	2.58	8.75	2.55	8.52
10-14	2.67	9.05	2.67	8.91
15-19	2.85	9.66	2.84	9.49
20-24	3.01	10.21	3.06	10.22
25-29	2.92	9.90	2.96	9.88
30-34	2.37	8.02	2.48	8.27
35-39	1.99	6.75	2.01	6.72
40-44	1.83	6.19	1.84	6.15
45-49	1.67	5.65	1.68	5.63
50-54	1.46	4.93	1.49	4.98
55-59	1.16	3.93	1.21	4.03
60-64	0.90	3.04	0.93	3.09
65-69	0.61	2.08	0.66	2.20
70-74	0.43	1.44	0.43	1.43
75-79	0.27	0.90	0.29	0.97
80+	0.26	0.88	0.27	0.90
Total	29.52	100.00	29.95	100.00

Notes : 1. Mid-Year Population Estimates based on the adjusted Population and Housing Census of Malaysia 2010

2. The added total may differ due to rounding

Source : Department of Statistics (DOS), Malaysia

Table 11.2 Population by State (2012-2013)

State	2012* (Number in Millions)		2013 (Number in Millions)	
	Number	Percentage	Number	Percentage
Johor	3.46	11.71	3.50	11.68
Kedah	1.99	6.76	2.01	6.72
Kelantan	1.65	5.58	1.68	5.59
Melaka	0.84	2.85	0.85	2.84
N. Sembilan	1.06	3.61	1.08	3.61
Pahang	1.55	5.25	1.57	5.25
Perak	2.43	8.22	2.45	8.17
Perlis	0.24	0.81	0.24	0.80
P. Pinang	1.63	5.51	1.65	5.50
Selangor	5.70	19.31	5.79	19.32
Terengganu	1.10	3.74	1.13	3.76
Sabah	3.42	11.58	3.50	11.68
Sarawak	2.57	8.70	2.62	8.75
WP KL	1.71	5.79	1.72	5.76
WP Labuan	0.09	0.31	0.09	0.30
WP Putrajaya	0.08	0.28	0.09	0.29
Total	29.52	100.00	29.95	100.00

Notes : 1. Mid-Year Population Estimates based on the adjusted Population and Housing Census of Malaysia 2010

2. The added total may differ due to rounding

3. * Data has been revised by DOS

Source : Department of Statistics (DOS), Malaysia

Table 11.3 Population by Region and Location (2012-2013)

REGION	2012 (Number in Millions)		2013 (Number in Millions)	
	Urban	Rural	Urban	Rural
	Peninsular Malaysia	17.95	5.49	18.33
Sabah & W.P Labuan	1.99	1.51	2.07	1.52
Sarawak	1.42	1.15	1.47	1.15
Total	21.36	8.16	21.87	8.08

Notes : 1. Mid-Year Population Estimates based on the adjusted Population and Housing Census of Malaysia 2010

2. The added total may differ due to rounding

3. * Data has been revised by DOS

Source : Department of Statistics (DOS), Malaysia

Table 11.4 Population by Location (2012-2013)

LOCATION	2012*		2013	
	Population ('000)	%	Population ('000)	%
Urban	21.36	72.37	21.87	73.02
Rural	8.16	27.63	8.08	26.98
Total	29.52	100.00	29.95	100.00

Notes : 1. Mid-Year Population Estimates based on the adjusted Population and Housing Census of Malaysia 2010.

2. * Data has been revised by DOS

Source : Department of Statistics (DOS), Malaysia

Table 11.5 Birth, Death and Fertility Rates (2011-2013)

	2011	2012 ^p	2013 ^e
Crude birth rate (per 1,000 population)	17.60	17.24	17.20
Crude death rate (per 1,000 population)	4.66	4.64	4.69
Infant mortality rate (per 1,000 live births)	6.51	6.30	6.59
Total Fertility Rate (per woman aged 15-49 years)	2.17	2.12	2.11

Notes : ^p- preliminary figures

^e- estimate figures

Source : Department of Statistics (DOS), Malaysia

Table 11.6 Literacy Rate (2011-2013)

	2011	2012	2013
Literacy Rate Age 10 and above (%)	95.18	95.21	95.25
Literacy Rate Age 15 and above (%)	94.58	94.62	94.68

Notes : 1. Statistics on literacy rates are derived from the Labour Force Survey (LFS)

2. The literacy rates were estimates using a proxy question in the LFS and excludes non-Malaysian citizens (i.e. refer to population aged 15 years and over who are currently schooling and/or have completed schooling were considered as literate)

3. Data has been revised by DOS

Source : Department of Statistics (DOS), Malaysia

12 : MALAYSIA EDUCATION INDICATORS

Table 12.1 Enrolment Rates (2011-2013)

	2011	2012	2013
Primary*			
Enrolment	2,860,340	2,811,264	2,742,989
Population 6* - 11***	3,029,413	2,973,624	2,906,781
Enrolment Rate (%)	94.42	94.54	94.37
Lower Secondary			
Enrolment	1,385,574	1,368,172	1,363,395
Population 12* - 14**	1,609,795	1,587,490	1,596,518
Enrolment Rate (%)	86.07	86.18	85.40
Upper Secondary			
Enrolment	837,288	844,821	845,712
Population 15* - 16***	1,076,949	1,083,597	1,084,817
Enrolment Rate (%)	77.75	77.96	77.96
Post Secondary			
Enrolment***	168,807	188,723	181,080
Population 17* - 18**	1,070,362	1,079,541	1,076,949
Enrolment Rate (%)	15.77	17.48	16.81

Notes : * Excluding pre-school enrolment in primary schools.

** Based on Live Birth

*** Including enrolment in Form 6, Matriculation Centres and ITE under the Ministry of Education

Enrolment Rates are based on enrolment in educational institutions under the Ministry of Education

Source : Malaysia Educational Statistics (2011 -2013), EPRD, MOE.

Table 12.2 Transition Rates: Primary to Lower Secondary and Lower Secondary to Upper Secondary Level (2011-2013)

	Percentage (%)		
	2011	2012	2013
From Year 6 to Form 1	96.55	97.59	97.14
From Form 3 to Form 4	96.61	98.33	96.27

Note : Data includes MOE, Private, MRSM, RMC, Religious Schools

Source : Malaysia Educational Statistics (2011 -2013), EPRD, MOE

Table 12.3 Pupil-Teacher Ratio (2011-2013)

	Percentage (%)		
	2011	2012	2013
Primary	12.60	12.29	11.98
Secondary	13.12	13.11	13.05

Source : Malaysia Educational Statistics (2011 -2013), EPRD, MOE

Table 12.4 Average Class Size (Pupils per Class) (2011-2013)

	2011	2012	2013
Primary	28	27	27
Secondary	28	28	29

Source : Malaysia Educational Statistics (2011 -2013), EPRD, MOE.

Table 12.5 Average School Size (Pupils per School) (2011-2013)

	2011	2012	2013
Primary	371	364	354
Secondary	974	959	989

Source : Malaysia Educational Statistics (2011 -2013), EPRD, MOE.

Table 12.6 Percentage of Teachers in Primary Schools by Gender and Age Group (2013 - 2014)

Age Group	2013 Gender		2014 Gender	
	% Male	% Female	% Male	% Female
<25	0.17	0.47	0.03	0.10
25 - 29	3.41	8.57	3.04	7.43
30 - 34	6.80	17.16	6.42	16.40
35 - 39	5.10	12.73	5.45	13.80
40 - 44	4.82	11.76	4.76	12.01
45 - 49	4.59	9.75	4.58	9.79
50 - 54	2.91	6.06	3.17	6.85
55 - 58	2.28	2.79	2.21	2.86
>58	0.32	0.31	0.58	0.52
Total	30.40	69.60	30.24	69.76

Note : Data has been revised

Source : Educational Planning and Research Division, (EMIS - Data as of 31 January)

Table 12.7 Percentage of Teachers in Secondary Schools by Gender and Age group (2013 - 2014)

Age Group	2013 Gender		2014 Gender	
	% Male	% Female	% Male	% Female
<25	0.02	0.06	0.02	0.04
25 - 29	3.43	11.40	2.99	9.77
30 - 34	4.40	13.64	4.39	14.69
35 - 39	4.26	11.55	4.12	11.67
40 - 44	5.48	12.16	5.07	11.88
45 - 49	6.40	11.11	6.15	11.27
50 - 54	4.50	6.33	4.85	7.01
55 - 58	2.37	2.32	2.49	2.55
>58	0.35	0.22	0.65	0.39
Total	31.21	68.79	30.73	69.27

Note : Data has been revised

Source : Educational Planning and Research Division, (EMIS - Data as of 31 January)

13 : WORLD EDUCATION INDICATORS (WEI)

Table 13.1 World Education Indicators (Malaysia) - Enrolment by ISCED Level

ISCED	LEVEL OF EDUCATION	ENROLMENT (2011)	ENROLMENT (2012)
0	PRE-SCHOOL	713,375	833,121
1	PRIMARY	2,923,739	2,888,077
2	LOWER SECONDARY	1,510,675	1,496,521
3C	UPPER SECONDARY	924,474	928,023
3A	POST SECONDARY	192,555	337,404
4C	POST SECONDARY NON-TERTIARY	79,011	5,508
5B	DIPLOMA	435,417	435,891
5A	DEGREE	572,393	612,208
6	PHD	28,544	28,576

Note : ISCED - International Standard Classification of Education
Source : Malaysia WEI - Data 2011 and 2012

Table 13.2 Gross Enrolment Ratio : Primary and Secondary Education

	Finland	Malaysia*	Japan	Germany	Australia	Republic of Korea	UK	USA
Reference year	2011	2011	2011	2011	2011	2011	2011	2011
Primary	99	96	103	101	104	104	107	99
Secondary	107	68	102	102	133	97	97	94

Source : UNESCO Institute for Statistics (UIS)
* Ministry of Education, Malaysia

Table 13.3 Transition Rate: Primary to Secondary Education

	Finland	Malaysia	Japan	Germany	Australia	Republic of Korea	UK	USA
Reference year	2010	2010	2010	2010	2010	2010	2010	2010
Transition rate from primary to secondary	100	100	...	99	...	100

Note : ... data not available
Source : UNESCO Institute for Statistics (UIS)

Table 13.4 Female Participation in Education (%)

	Finland	Malaysia*	Japan	Germany	Australia	Republic of Korea	UK	USA
Reference year	2011	2011	2011	2011	2011	2011	2011	2011
Pre-primary	69	76	...	111	...	118	85	72
Primary	98	96	103	100	104	103	107	99
Secondary	93	66	102	99	129	96	98	94
Tertiary	106	39	57	59	97	85	71	111

Note : ... data not available
Source : UNESCO Institute for Statistics (UIS)
* Ministry of Education, Malaysia

Table 13.5 Pupil-Teacher Ratio

	Finland	Malaysia	Japan	Germany	Australia	Republic of Korea	UK	USA
Reference year	2011	2011	2011	2011	2011	2011	2011	2011
Pre-primary
Primary	14	12	17	12	18	19	17	14
Secondary

Note : ... data not available in the UIS database

Source : UNESCO Institute for Statistics (UIS)

Table 13.6 Average Class Size

	Finland	Malaysia	Japan	Germany	Australia	Republic of Korea	UK	USA
Reference year	2010	2010	2010	2010	2010	2010	2010	2010
Primary	19.4	28	27.9	21.5	23.2	27.4	25.8	20.3
Lower secondary	20.2	34	32.8	24.7	22.8	34.9	21.1	23.7

Note : When latest indicator is not available in the UIS database, indicators are repeated from the previous year

Source : UNESCO Institute for Statistics (UIS)

Table 13.7 Teaching Weeks Per Year in Public Institutions by Level of Education

	Finland	Malaysia	Japan	Germany	Australia	Republic of Korea	UK	USA
Reference year	2009	2009	2009	2009	2009	2009	2009	2009
Primary	38	39	40	40	40	40	38	36
Lower secondary	38	39	40	40	40	40	38	36
Upper secondary (general programmes)	38	39	40	40	40	40	38	36

Note : When latest indicator is not available in the UIS database, indicators are repeated from the previous year

Source : UNESCO Institute for Statistics (UIS)

Table 13.8 School Life Expectancy

	Finland	Malaysia	Japan	Germany	Australia	Republic of Korea	UK	USA
Reference year	2011	2009	2011	2011	2011	2011	2011	2011
Primary to Tertiary	17.00	15.14	15.30	16.30	19.90	17.00	16.20	16.50

Source : UNESCO Institute for Statistics (UIS)

Table 13.9 Public Expenditure on Education (Total public expenditure per student as a % of GDP per capita)

	Finland	Malaysia	Japan	Germany	Australia	Republic of Korea	UK	USA
Reference year	2011	2011	2011	2010	2010	2011	2011	2011
Primary	20.00	35.00	...	14.00	34.00	32.00	29.00	...
Secondary	41.00	46.00	...	50.00	...	37.00	48.00	...
Tertiary	33.00	17.00	...	26.00	...	19.00	18.00	...

Note : ... data not available

Source : UNESCO Institute for Statistics (UIS)

Table 13.10 Educational Attainment of the Population Aged 25 Years and Older

	Finland	Malaysia	Japan	Germany	Australia	Republic of Korea	UK	USA
Reference year	2011	2010	2010	2012	2012	2010	2011	2012
Population (000)	3,842	14,682	97,581	62,906	15,513	33,749	43,427	210,919
No Schooling (%)	X(LS)	8.8	0.1	.	0.1	4.7	0.1	0.4
Incomplete Primary (%)	X(LS)	–	X(U)	.	–	1.0	–	0.8
Primary (%)	X(LS)	23.0	X(LS)	3.3	5.5	11.4	–	3.8
Lower Secondary (%)	28.8	17.3	16.7	14.7	18.0	10.2	13.8	7.3
Upper Secondary (%)	38.6	34.5	39.9	50.2	30.0	37.4	53.0	47.0
Post-secondary non-tertiary (%)	X(US)	X(T)	X(US)	6.2	52.0	.	–	X(US)
Tertiary (%)	32.6	16.4	29.9	25.6	41.3	35.3	33.1	40.7
Unknown (%)	–	.	13.4	0.1	–	–	–	–

Notes : X(T) - Data included in Tertiary
 X(US) - Data included in Upper Secondary
 X(LS) - Data included in Lower Secondary
 X(U) - Data included in Unknown
 ... data not available
 . data not applicable
 _ magnitude null or negligible

Source : UNESCO Institute for Statistics (UIS)

Table 13.11 Adult and Youth Literacy

Age	Philippines	Malaysia	China	Singapore	Indonesia	Thailand
Reference Year	2011	2011	2011	2011	2011	2011
Adults (15 years and older)	95.00	93.00	95.00	96.00	93.00	94.00
Youth (15 to 24 years)	98.00	98.00	100.00	100.00	99.00	98.00

Source : UNESCO Institute for Statistics (UIS)

ABBREVIATIONS AND SYMBOLS

a	Category is not applicable
b	Budget figures
(C)	Chinese
F	Female
f	Forecast
M	Male
p	Preliminary figures
(T)	Tamil
nr	Not relevant
X	Data included in another category
...	Data not available
.	Data not applicable
_	Magnitude null or negligible
ABIM	<i>Angkatan Belia Islam Malaysia</i> (Muslim Youth Movement of Malaysia)
CFLD	Class For Learning Disabilities
CPI	Consumer Price Index
DOS	Department of Statistics
EPRD	Educational Planning and Research Division
F.T.	Federal Territory
GMT	Greenwich Mean Time
GDP	Gross Domestic Product
GNP	Gross National Product
HES	Higher Education Sector
ISCED	International Standard Classification of Education
JAIN	<i>Jabatan Agama Islam Negeri</i> (State Religious Department)
KEMAS	<i>Jabatan Kemajuan Masyarakat</i> (Department of Community Development)
MOE	Ministry of Education
NVTC	National Vocational Training Centre
PERPADUAN	National Unity and Intergration Department
GARS	Government-Aided Religious School (<i>Sekolah Agama Bantuan Kerajaan</i>)
SRAN	<i>Sekolah Rendah Agama Negeri</i> (State Religious Primary School)
SRAR	<i>Sekolah Rendah Agama Rakyat</i> (People Religious Primary School)
SMAN	<i>Sekolah Menengah Agama Negeri</i> (State Religious Secondary School)
SMAR	<i>Sekolah Menengah Agama Rakyat</i> (People Religious Secondary School)
ITE	Institute of Teacher Education
WEI	World Education Indicators

