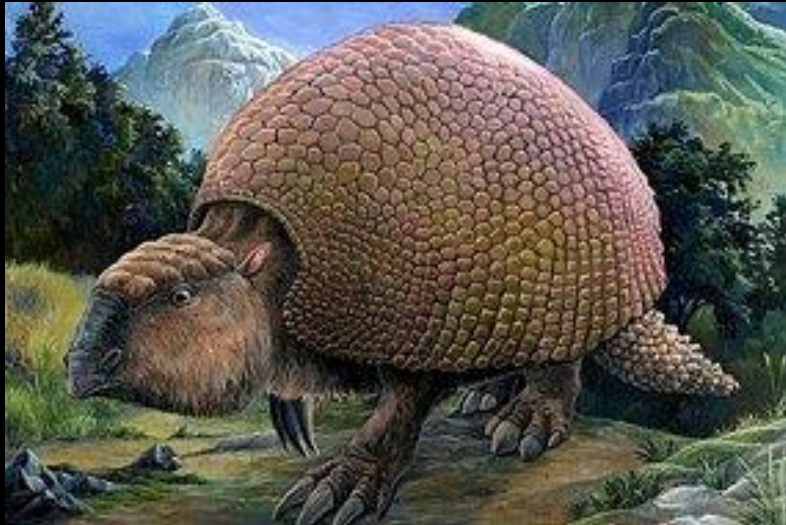


# Xenarthra (Orders Pilosa and Cingulata)

- Order Pilosa
  - Myrmecophagidae (anteaters)
  - Cyclopedidae (silky anteaters)
  - Bradypodidae (3-toed sloths)
  - Megalonychidae (2-toed sloths)
- Order Cingulata
  - Dasypodidae (armadillos)
- Xenarthra means “strange jointed” - refers to the accessory zygapophyses on the lumbar vertebrae

# Xenarthra (Orders Pilosa and Cingulata)

- Xenarthrans were diverse when S. America was still an island continent



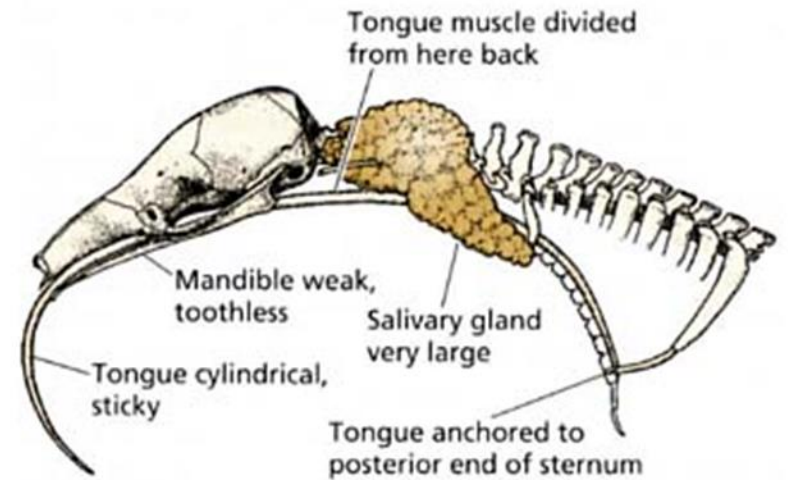
# Order Pilosa

## Family Myrmecophagidae (2 genera, 4 species)

- Genus *Myrmecophaga* (Giant anteater)
  - Mostly diurnal, terrestrial, live up to 26 years in captivity
  - NW Argentina through S America east of Andes to C America
  - Long tongue (up to 60 cm) w/ backward spines & sticky saliva, controlled by muscles attached to sternum







**Figure 7.3 Anteater tongue specialization.** The long, wormlike tongue of the collared anteater (*Tamandua*) is anchored to the posterior end of the sternum and can be protruded extensively to assist in capturing ants and termites. Adapted from M. Hildebrand, 1995, *Analysis of Vertebrate Structure*, John Wiley & Sons.

# Order Pilosa

## Family Myrmecophagidae (2 genera, 4 species)

- Genus *Tamandua*

- Active day & night, terrestrial & arboreal, live up to 9 years in captivity
- S Mexico to N Peru, Venezuela to Argentina, east of Andes
- Savannas, thorn scrub, wet and dry forests



# Order Pilosa

## Family Cyclopidae (silky anteaters)

- Genus *Cyclopes*
  - Nocturnal, almost completely arboreal
  - S Mexico to Brazil, possible Paraguay
  - Weighs less than 400 g (0.88 lbs)





Anteater defensive  
postures







# Order Pilosa

## Family Bradypodidae (3-toed sloths)

## Family Megalonychidae (2-toed sloths)

- Arboreal, folivorous, live up to 12 years
- C America south into Brazil, east of Andes
- Simple, ever-growing teeth
- 2-toed has canine-like front teeth
- Fur is grooved & turns green w/ algae

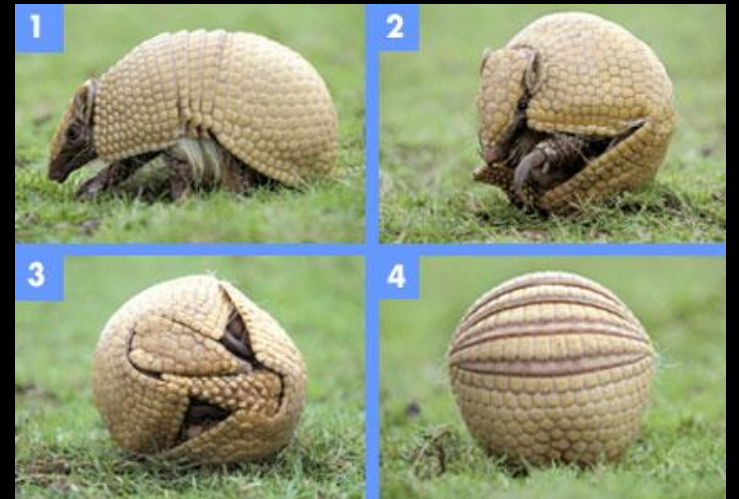




# Order Cingulata

## Family Dasypodidae (armadillos)

- 21 species in 9 genera
- Weight varies from 120 g (fairy armadillo) to 60 kg (giant armadillo)
- 14-18 peg-like teeth (giant armadillo has 80-100)
- Mostly nocturnal & solitary, live 8-12 years
- “shell” develops from skin = bony plates covered in keratin, connected by flexible skin
- 4 genetically identical young (polyemryony)



# Order Pholidota

## Family Manidae (pangolins)

- 7 species within genus; Africa, south of Sahara, SE Asia
- Arboreal or terrestrial, some have semi-prehensile tail
- Tongue is long and muscular, arises from pelvis & last pair of ribs
- Large, overlapping scales covering body are made of agglutinated hairs

Longest tongue relative to body size for any mammal!

