

DUDLEY

PROVISIONAL COUNTY OF HALIBURTON

Scale 40 chains to an inch

HARBURN

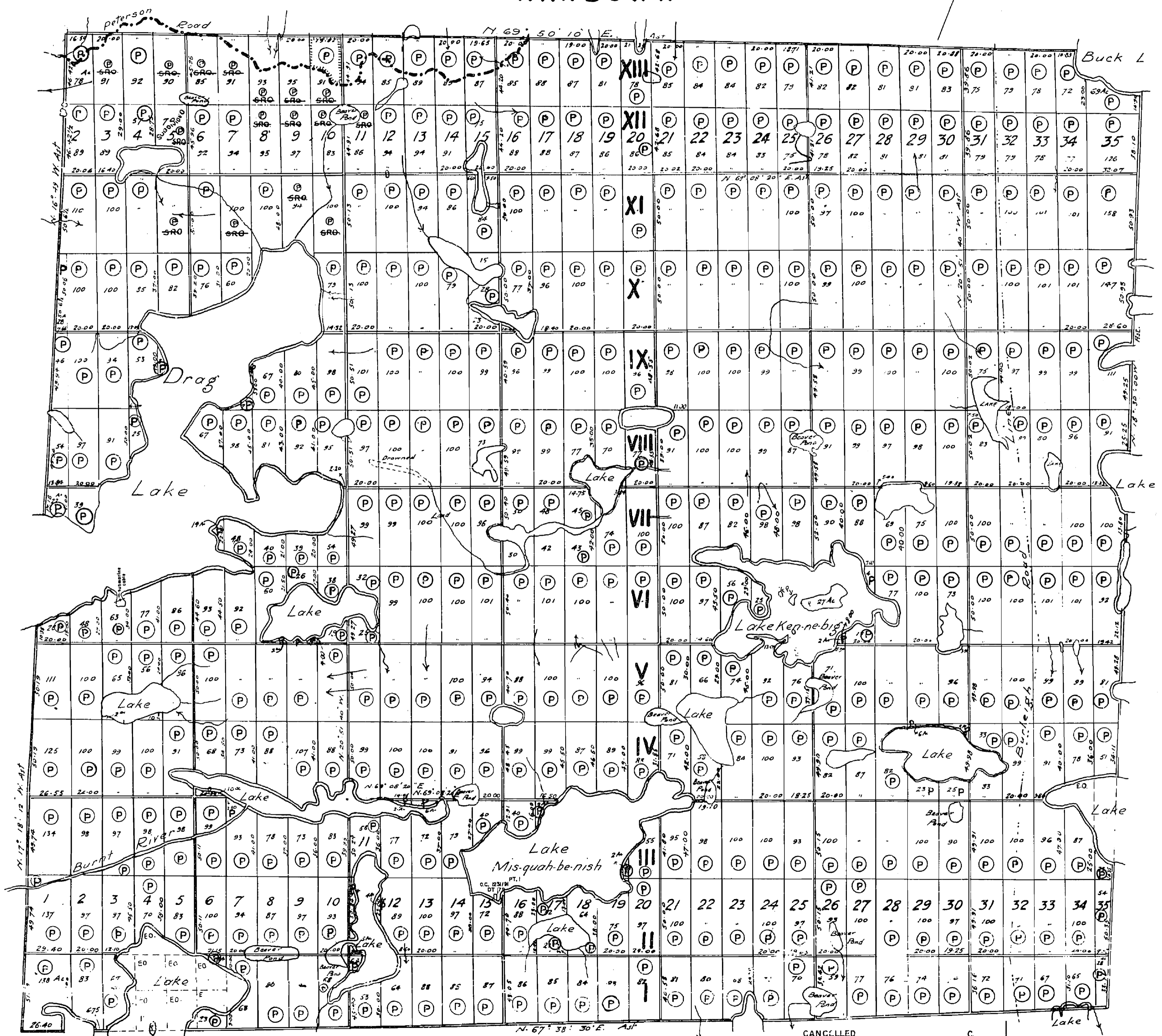
THE INFORMATION THAT APPEARS ON THIS MAP HAS BEEN COMPILED FROM VARIOUS SOURCES, AND ACCURACY IS NOT GUARANTEED. THOSE WISHING TO STAKE MINING CLAIMS SHOULD CONSULT WITH THE MINING RECORDER, MINISTRY OF NORTHERN DEVELOPMENT AND MINES, FOR ADDITIONAL INFORMATION ON THE STATUS OF THE LANDS SHOWN HEREON.

DATE OF ISSUE
 AUG 04 1995
 SOUTHERN ONTARIO
 MINING DIVISION

EASTERN ONT. MINING DIVISION

DYSART

HARCOURT



400' Surface rights reservation around all lakes & rivers

LEGEND

- | | |
|-----------------------|--------|
| CANCELLED | C |
| PATENTED LAND | (P) |
| CROWN LAND SALE | C.S. |
| LEASES | (L) |
| LOCATED LAND | LOC. |
| LICENSE OF OCCUPATION | L.O. |
| MINING RIGHTS ONLY | M.R.O. |
| SURFACE RIGHTS ONLY | S.R.O. |

Note: This Township shown as being in Peterborough County on Original Plat

Handwritten initials: L.M.

MCM MOUTH
 PLAN NO. M. 84

Surveyed by B.W. Gossage P.L.S.

Dated, Toronto, August 15th 1882.

DUDLEY

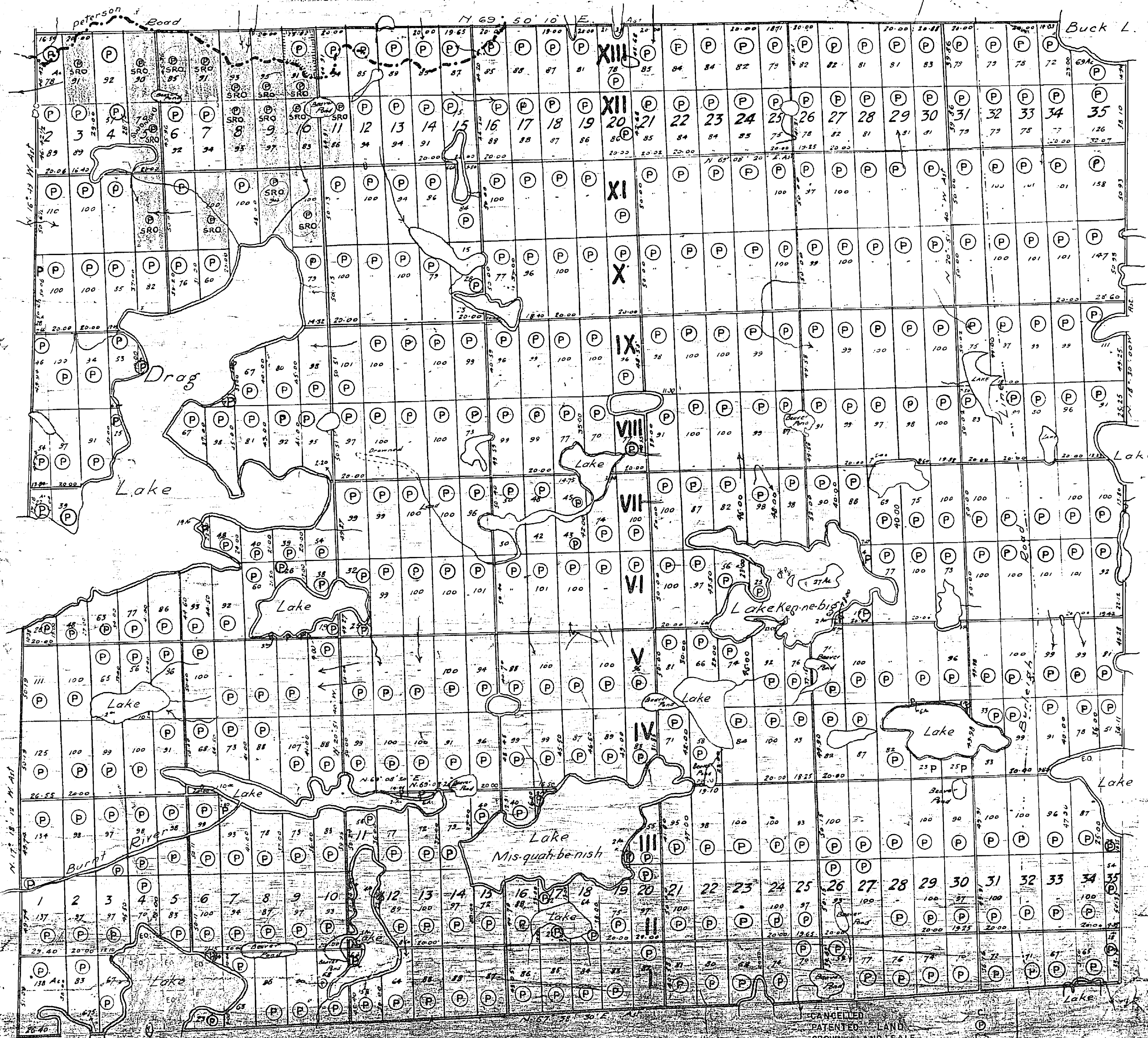
COUNTY OF HALIBURTON

DATE OF ISSUE
JUL 8th 1970
ONTARIO DEPT. OF MINES

ONTARIO
DEPARTMENT
OF
MINES
EASTERN ONT. MINING DIVISION

Scale - 40 chains to an inch

HARBURN



100' Surface rights reservation around lakes & rivers

LEGEND

- CANCELLED
- PATENTED LAND
- CROWN LAND SALE
- LEASES
- LOCATED LAND
- LICENSE OF OCCUPATION
- MINING RIGHTS ONLY
- SURFACE RIGHTS ONLY
- C
- P
- C.S.
- L
- Loc.
- L.O.
- M.R.O.
- S.R.O.

MONMOUTH
PLAN NO. M. 84

Surveyed by B.W. Gassage P.L.S.
Dated Toronto August 15, 1970

DODDIE

DYSART

HARCOURT

DUDLEY TWP. M. 84

DUDLEY

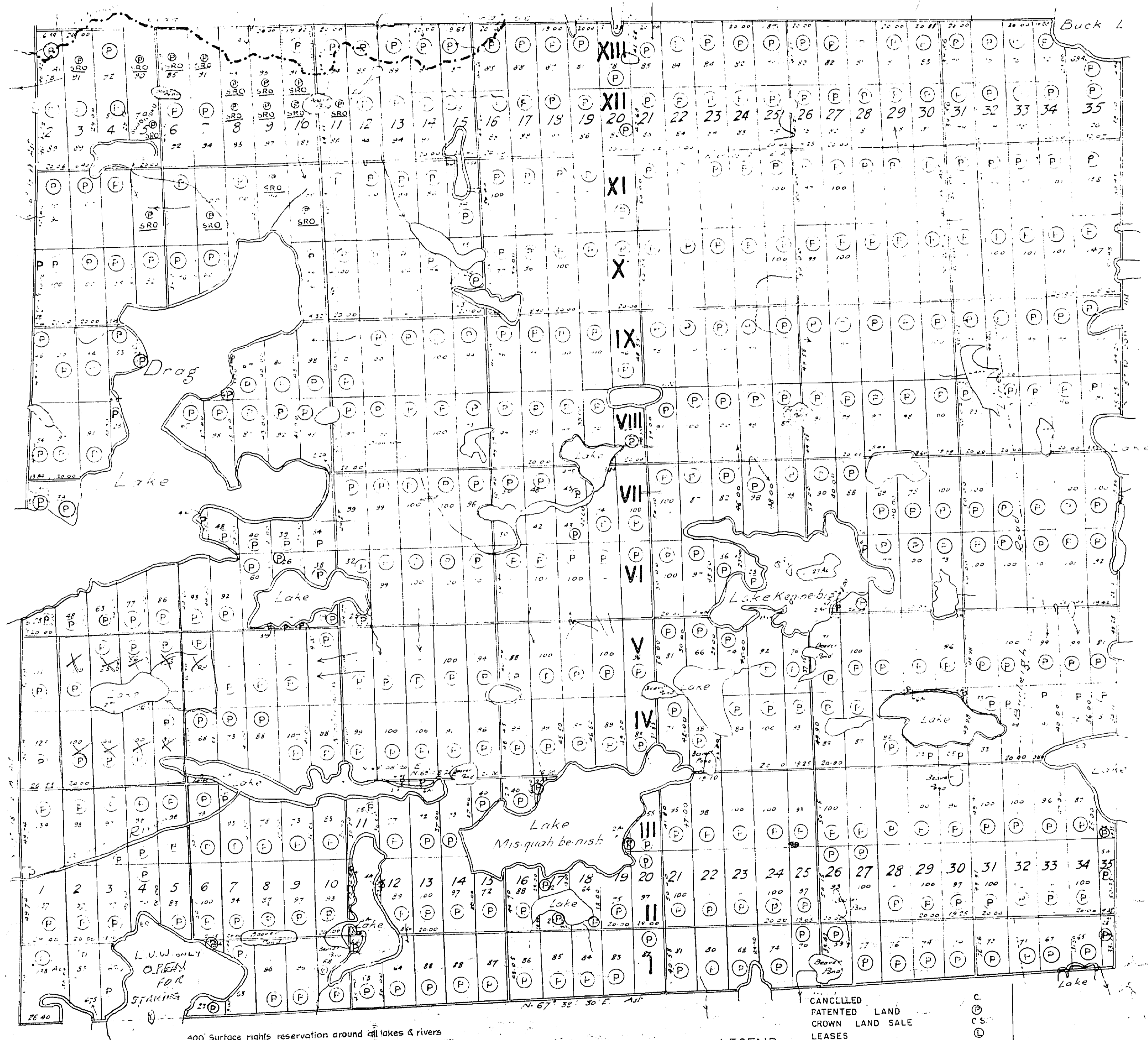
COUNTY OF HALIBURTON

DATE OF ISSUE
DEC 18 1972
ONT. DEPT. OF MINES
AND NORTHERN AFFAIRS

EASTERN ONT. MINING DIVISION

Scale - 40 chains to an inch

HARBURN,



400' Surface rights reservation around all lakes & rivers

LEGEND

- CANCELLED
 - PATENTED LAND
 - CROWN LAND SALE
 - LEASES
 - LOCATED LAND
 - LICENSE OF OCCUPATION
 - MINING RIGHTS ONLY
 - SURFACE RIGHTS ONLY
- ⊙
 - CS
 - Ⓛ
 - Loc.
 - L.O.
 - M.R.O.
 - S.R.O.

Note: This Township shown as being in Peterborough County on Original Plat.

MONMOUTH
PLAN NO M. 84

Surveyed by B.W. Gossage P.L.S.

Dated, Toronto, August 15, 1972

DODD

DODDIEY

PROVISIONAL COUNTY OF HALIBURTON

ONTARIO
MINISTRY OF NATURAL RESOURCES

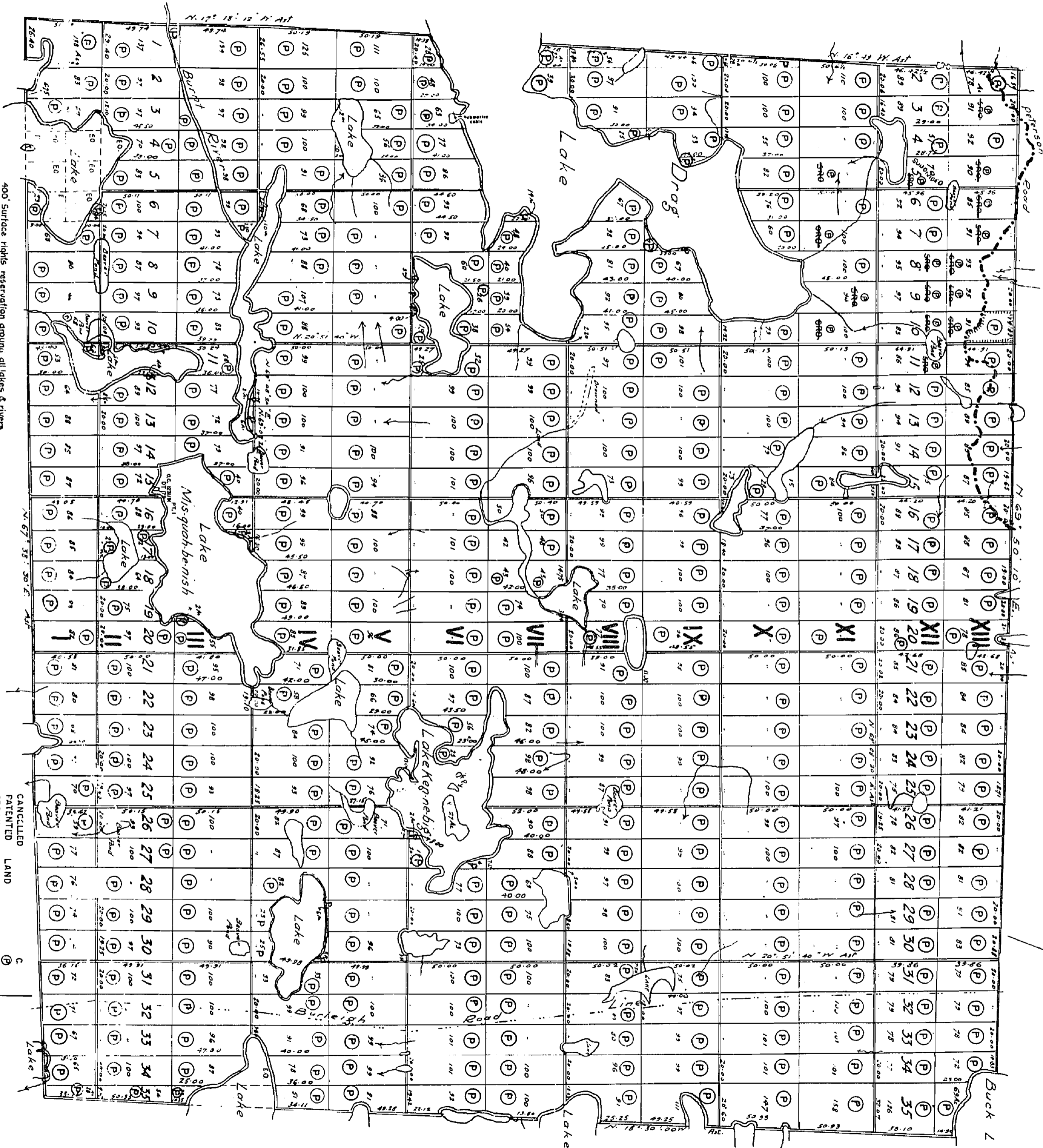
SURVEYS AND MAPPING BRANCH

Scale 4 chains to an inch

HARBURN

THE INFORMATION THAT APPEARS ON THIS MAP HAS BEEN COMPILED FROM VARIOUS SOURCES, AND ACCURACY IS NOT GUARANTEED. THOSE WISHING TO STAKE MINING CLAIMS SHOULD CONSULT WITH THE MINING RECORDS, MINISTRY OF NORTHERN DEVELOPMENT AND MINING, TORONTO, ON THE STATUS OF THE LANDS SHOWN HEREON.

EASTERN ONT. MINING DIVISION



DYSART

HARCOURT

from

Note: This Township shown existing in Haliburton County on Original Plans

400' Surface rights reservation around all lakes & rivers

MCN MOUTH
PLAN NO M.84

LEGEND

- CANCELLED LAND
- ⊙ PATENTED LAND
- ⊙ CROWN LAND SALE
- ⊙ LEASES
- ⊙ LOCATED LAND
- ⊙ LICENSE OF OCCUPATION
- ⊙ MINING RIGHTS ONLY
- ⊙ SURFACE RIGHTS ONLY

Surveyed by B.W. Gossage P.L.S.

Dated, Toronto, August 15th 1882.

RES. GEO. TWEED

M.N.R. DIST. MINDEN

DUDLEY

M-84

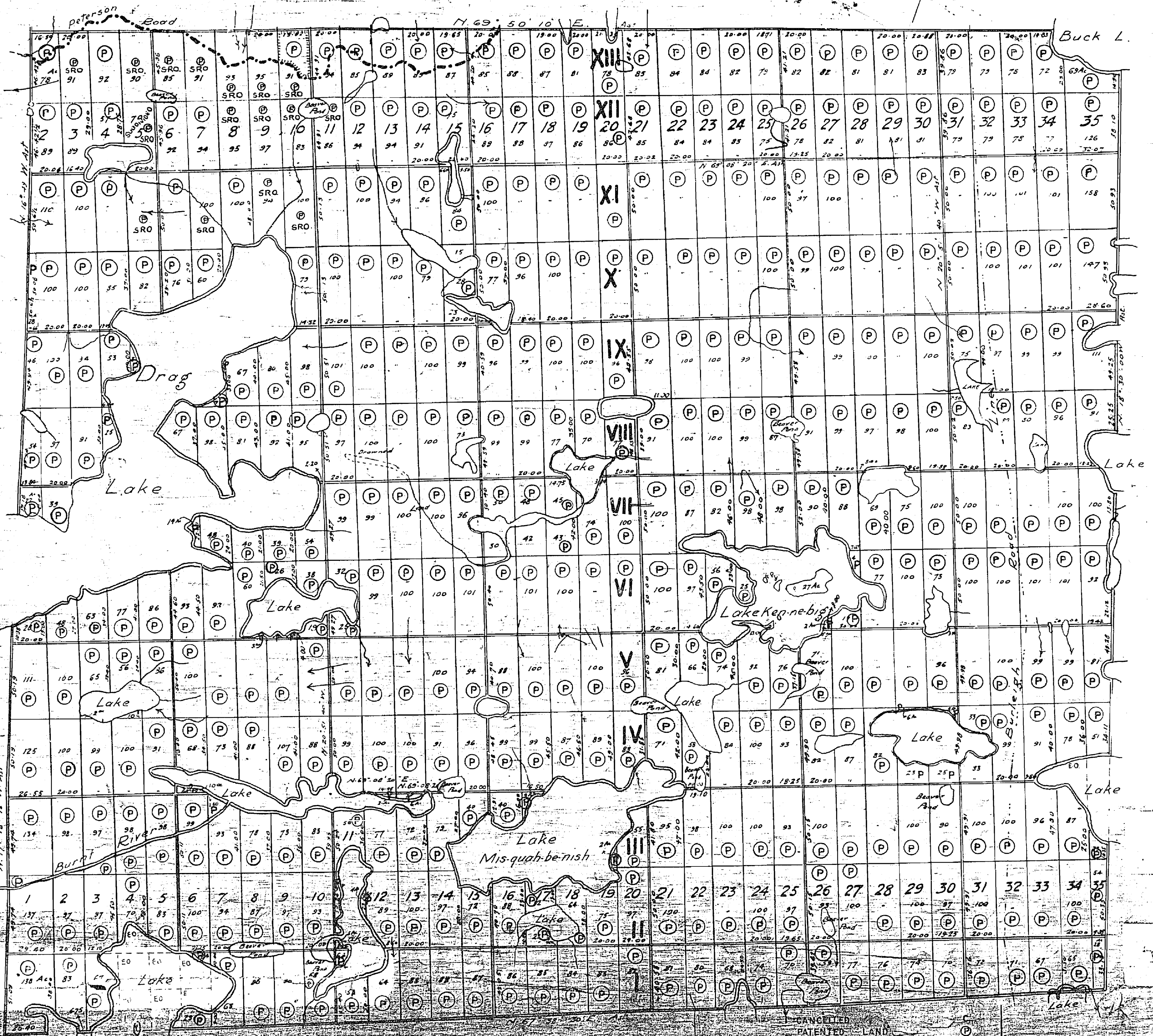
COUNTY OF HALIBURTON

Scale: 40 chains to an inch

MINING LANDS -
DATE OF ISSUE
NOV 17 1975
MINISTRY
OF NATURAL RESOURCES

EASTERN ONT. MINING DIVISION

HARBURN



CANCELLED
 PATENTED LAND
 CROWN LAND SALE
 LEASES
 LOCATED LAND
 LICENSE OF OCCUPATION
 MINING RIGHTS ONLY
 SURFACE RIGHTS ONLY

C
 P
 S
 L
 L.O.
 M.R.O.
 S.R.O.

MONMOUTH H
PLAN NO M-84

Surveyed by B.W. Cassady P.L.S.
Filed Toronto August 13, 1975

DUDLEY

DUDLEY

PROVISIONAL COUNTY OF HALIBURTON

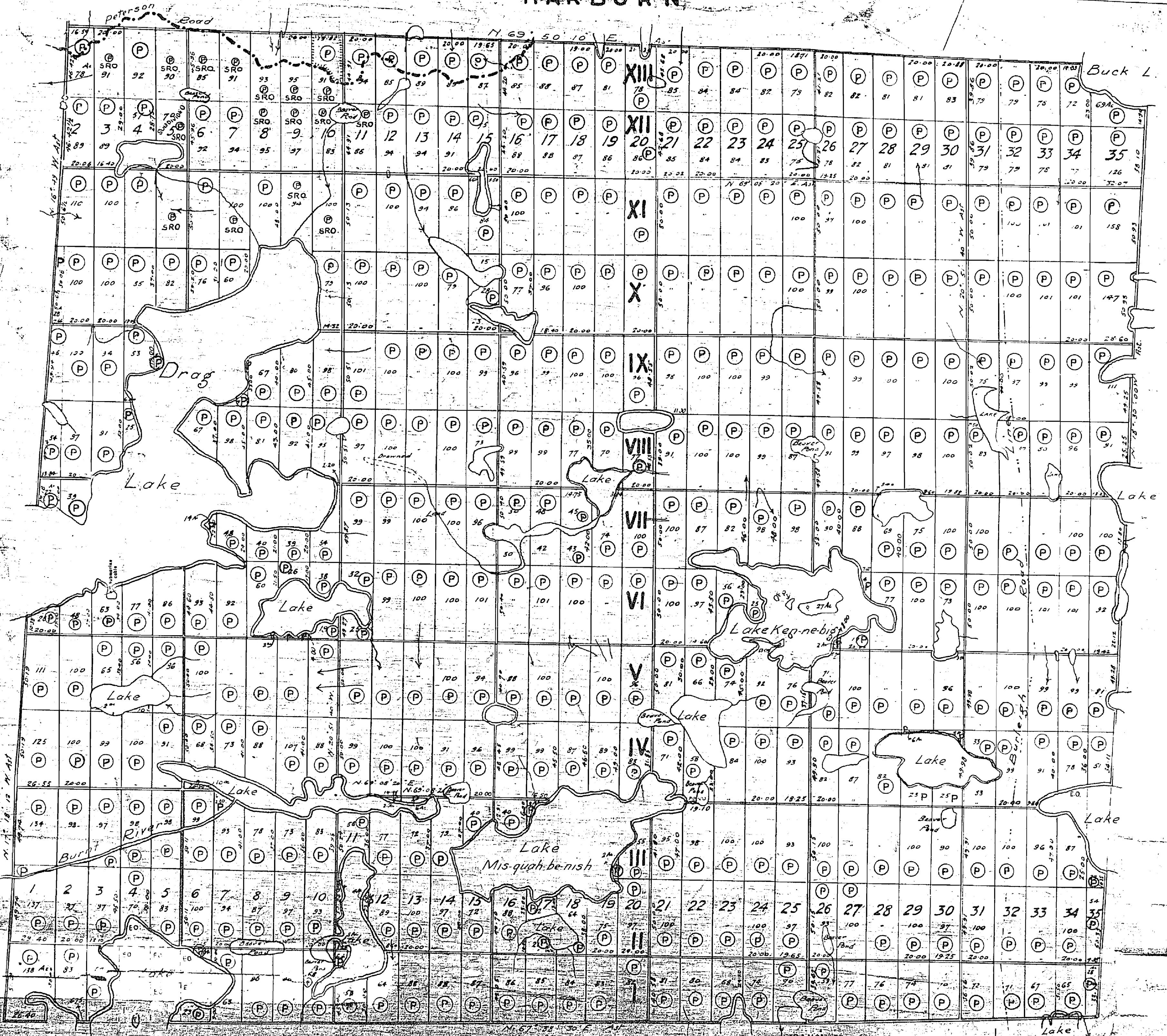
Scale: 40 chains to an inch

HARBURN

ONTARIO
MINISTRY OF NATURAL RESOURCES
SURVEYS AND MAPPING BRANCH

DATE OF ISSUE
JUL 16 1960
SURVEYS AND MAPPING
BRANCH

EASTERN ONT. MINING DIVISION



100' Surface Rights reservation around the lakes & rivers

Note: This Township shown as being in Haliburton County on original Plan

LEGEND

- CANCELLED
- PATENTED LAND
- CROWN LAND SALE
- LEASES
- LOCATED LAND
- LICENSE OF OCCUPATION
- MINING RIGHTS ONLY
- SURFACE RIGHTS ONLY

MONMOUTH

PLAN NO. M-84

Surveyed by B.M. Gossage, P.L.S.

Dated Toronto August 15, 1960

DODGE

D.M.
MINDEW

A
M-84

ONTARIO
MINISTRY OF NATURAL RESOURCES
SURVEYS AND MAPPING BRANCH

DUDLEY

PROVISIONAL COUNTY OF HALIBURTON

Scale - 40 chains to an inch

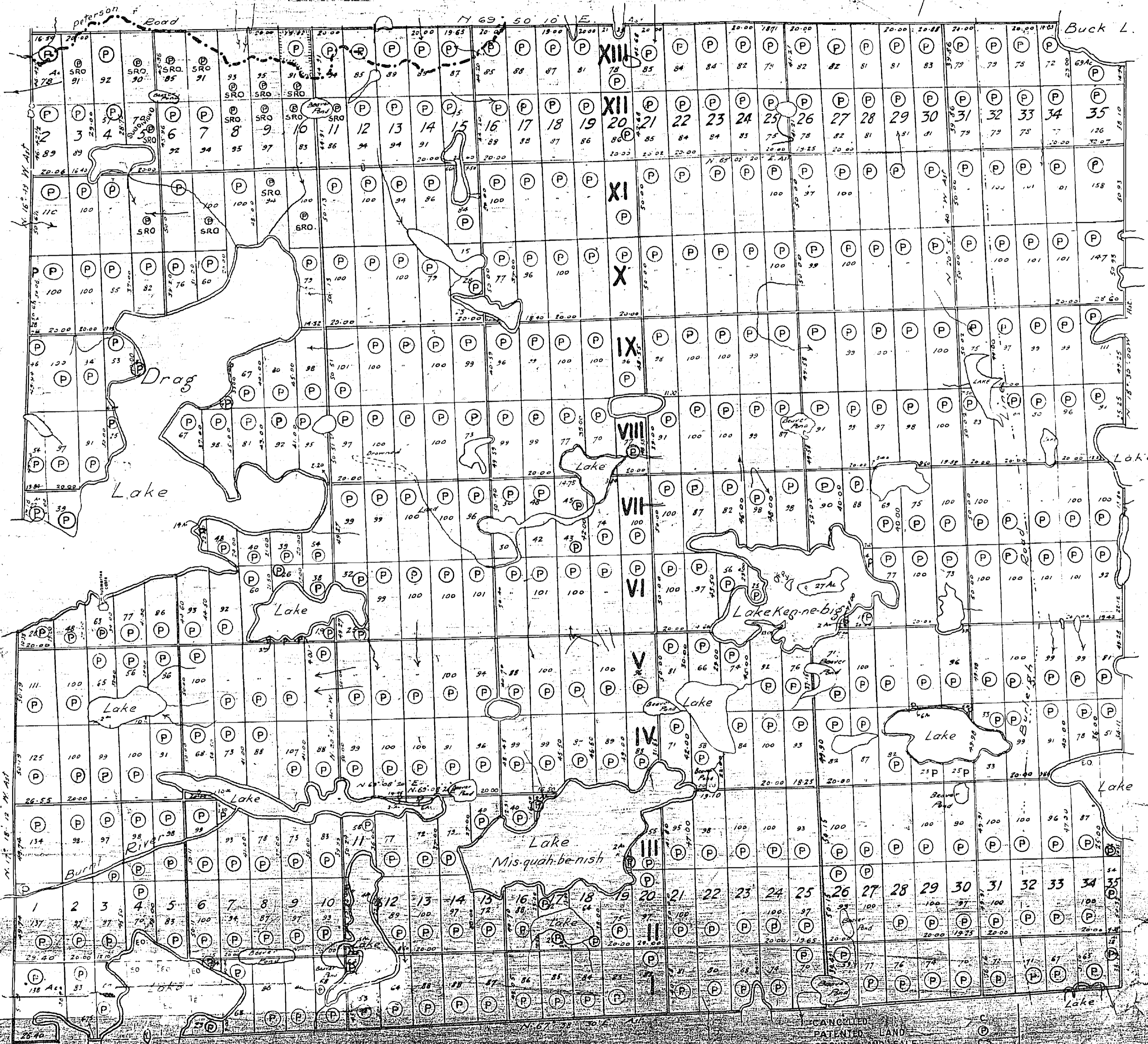
HARBURN

DATE OF ISSUE

JUL 12 1892

Ministry of Natural Resources
TORONTO

EASTERN ONT. MINING DIVISION



DYSART

HARCOURT

LEGEND

Cancelled	C
Patented Land	P
Crown Land Sale	CS
Leases	L
Located Land	Loc
License of Occupation	L.O.
Mining Rights Only	M.R.O.
Surface Rights Only	S.R.O.

MONMOUTH
PLAN NO. M. 84

Surveyed by B.W. Gossage P.L.S.
Dated Toronto August 15 1892

Note: This township shown as being in Alabamawick County in Original Plan

DUDLEY

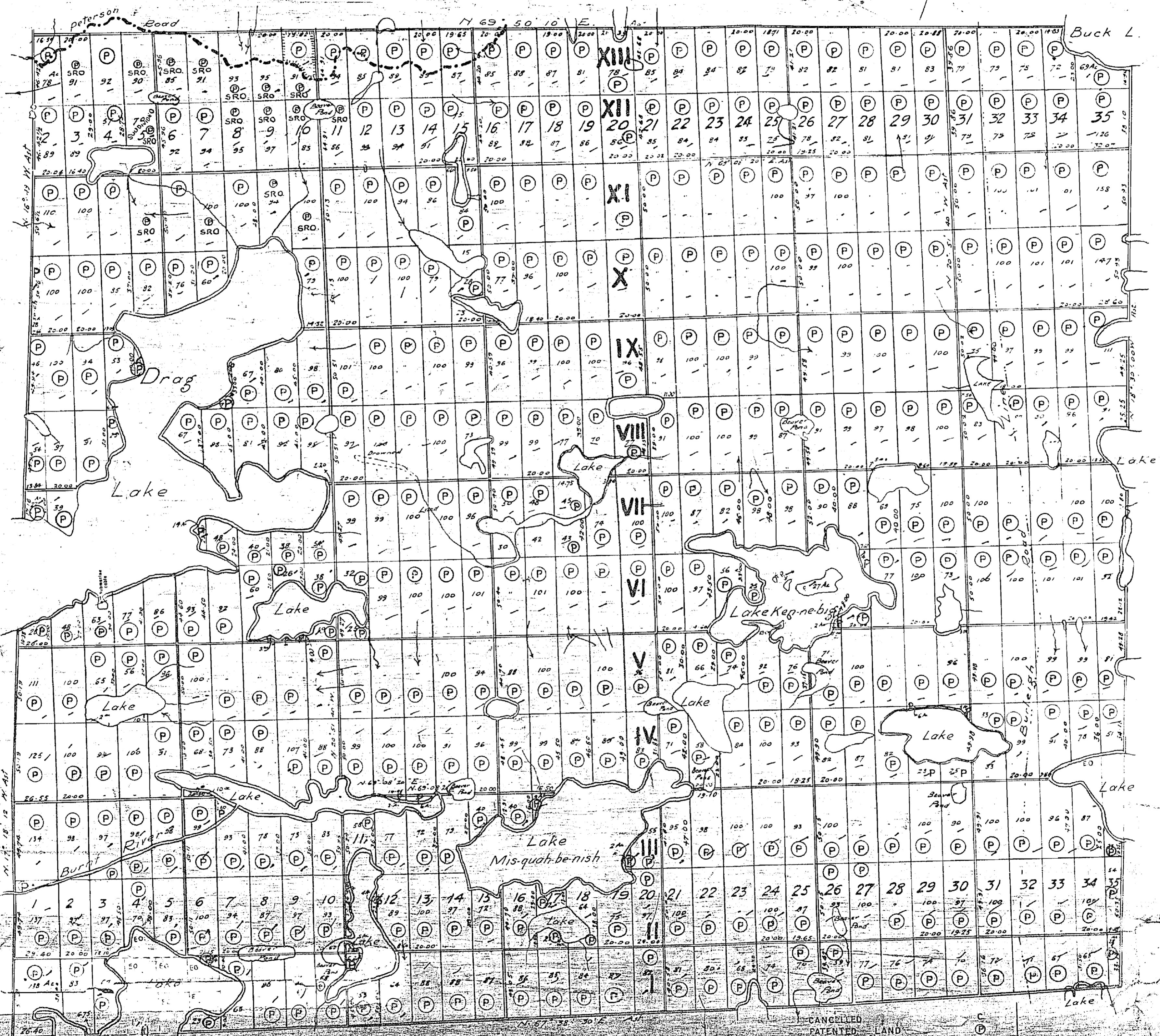
PROVISIONAL COUNTY OF HALIBURTON

"A" M-84
Scale: 40 chains to an inch

DM. MINDEN
HARBURN

DATE OF ISSUE
JUN 28 1983
Ministry of Natural Resources
TORONTO

EASTERN ONT. MINING DIVISION



LEGEND
CANCELLED
PATENTED LAND
CROWN LAND SALE
LEASES
LOCATED LAND
LICENSE OF OCCUPATION
MINING RIGHTS ONLY
SURFACE RIGHTS ONLY
C
P
C-S
L
Loc
L.O.
M.R.O.
S.R.O.

MONMOUTH
PLAN NO M-84

Surveyed by B.M. Gossage P.L.S.
Dated Toronto August 15 1982

Note: This Township shows as being in Peterborough County in Original Plan

DUDLEY

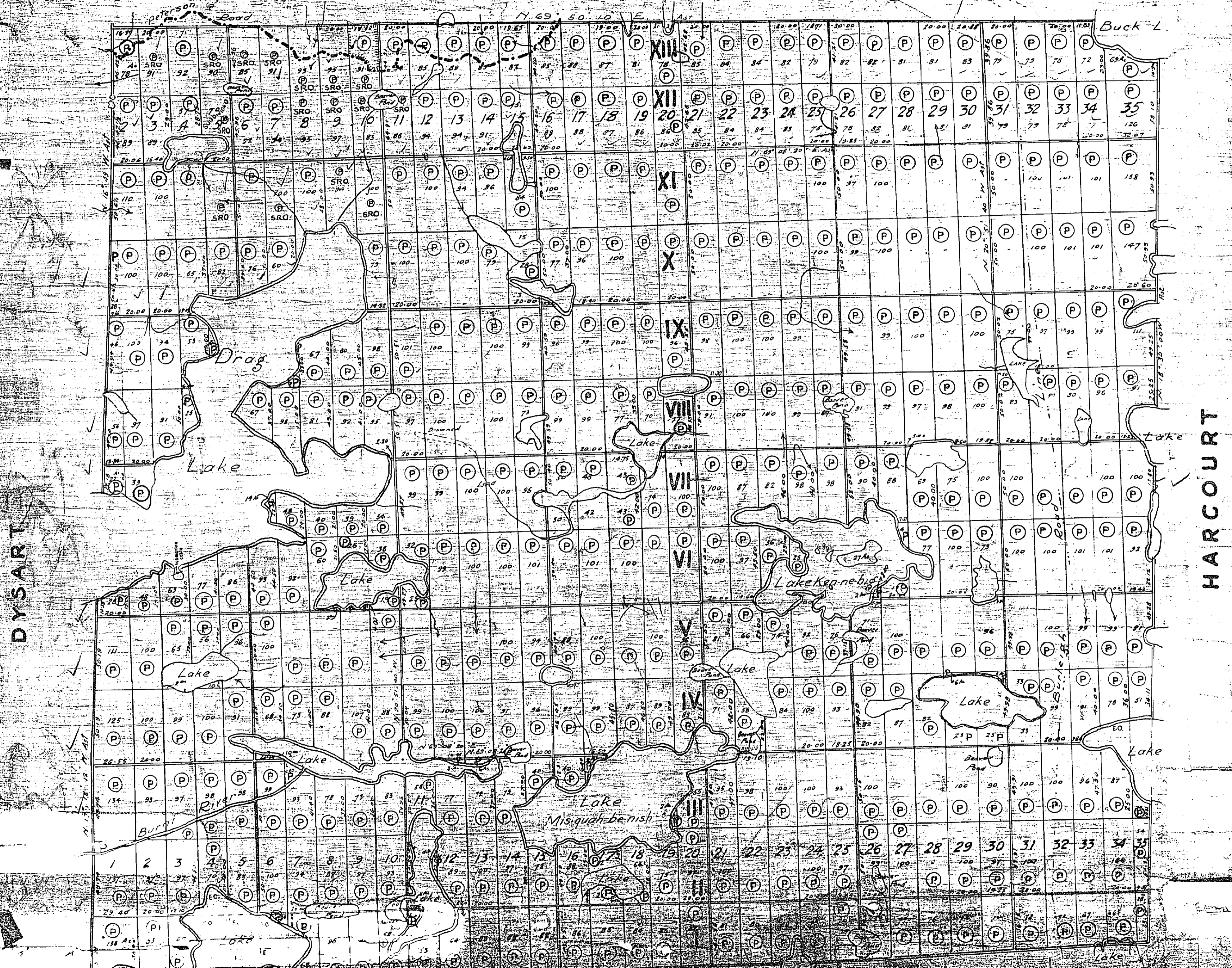
PROVISIONAL COUNTY OF HALIBURTON
A M84 MINDEN DISTRICT

Scale 40 chains to an inch
RESIDENT GEOLOGIST - TWEED
HARBURN

MINING RECORDS OFFICE TORONTO
AUG 19 1985

NATURAL RESOURCES
AUG 19 1985
TITLES SECTION

SOUTHERN ONTARIO MINING DIVISION



DYSART

HARCOURT

REGISTRY
TITLES
LAND
PURCHASE RIGHTS ONLY
MINE RIGHTS ONLY