

The Essex Echo: Audio According to Hawksford, Pt. 1



Malcolm Hawksford had his first design, a console tape recorder with pre- and power amp and build-in loudspeakers, published in the prestigious *HiFi News* in June 1963 at age 15. It was an early milestone in a life and career marked by contributions to advance the state-of-the-art in audio. It led up to the Audio Engineering Society's Silver Medal Award "for major contributions to engineering research in the advancement of audio reproduction" in 2006, and a Doctor of Science degree for lifetime research achievements from Aston University (UK) in 2008. Jan Didden visited him at his lab at Essex University and spent many fascinating hours talking about audio technology.

Jan Didden (JD): Professor Hawksford, you published your tape recorder design at the age of 15 (Photo 1). When did you start to become interested in audio, and why?

Malcolm Hawksford (MH): Oh, I think it started when I was 8. You see, my father, and indeed his father before him back in the 1920s, were interested in music reproduction; my father had this 50s Grundig tape recorder, type TK820-3D I think it was. I was also interested in making puppet theaters, especially the lighting, and used to build control systems by winding variable resistors on wooden dowels, batten lighting, and spot lights using baking powder tins. It taught me a lot about lamps in series and parallel and the losses that could occur in connecting wires (smile). I became fascinated by those wires and lights and how they worked. So I got to play with tape recorders and circuits and also obtained

Professor Hawksford has published several articles for the audio press under the cover title "The Essex Echo." The Echo was a local Essex newspaper published between 1887 and 1918.

Another tape man who believes in compactness is Mr. Hawksford of Shrewsbury, who is already a regular reader at the age of 15. Surprisingly, the equipment illustrated incorporates all of the following: Brenell Mk V deck with three heads, Stern type C preamplifier with correction for all three speeds, RSC A11, 12 watt amplifier, TSL Mk II tuner, and a monitor speaker. The cabinet which is Mr. Hawksford's own work is finished in *Rexine*, and overall results are claimed to be "most satisfactory."

Now we move across the Channel to a German reader, Mr. W. Maass of Hamburg, who has just about as international a collection

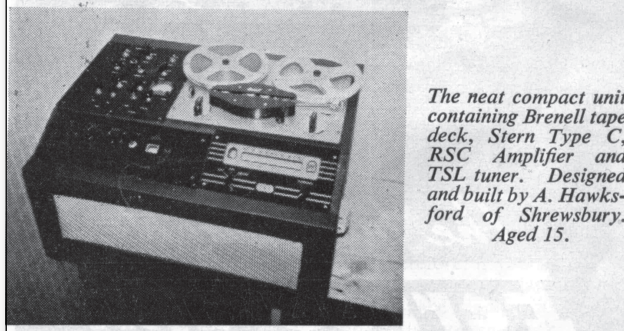


PHOTO 1: The 1963 article in *HiFi News* featuring 15-year-old Malcolm's integrated tape machine.

electrical parts and old TVs from my father to experiment with, as at that time he worked for an electrical wholesaler.

I remember my first tape recorder didn't want to record: I had measured its recording head resistance with a multimeter, and, unknown to me, the head had become heavily magnetized. But I eventually figured it out, and, after degaussing the head (care of a Ferrograph de-gausser), it actually worked quite well. I was also very fortunate that my mum didn't really object when I turned

my bedroom into a lab and the carpet developed a silver sheen of solder!

JD: The 60s were a great time for a youngster interested in electronics anyway.

MH: Absolutely. You could get parts and kits for almost any purpose. After building a few kits, I quickly started to develop my own circuits and topologies. I still enjoy circuit design. The way it works for me is that I sort of juggle or model the circuit in my mind, actually visualizing the circuit and various voltages and currents, before I put it on paper.

I also was lucky that by the time I was ready to go to university in 1965, the University of Aston in Birmingham offered one of the first electrical engineering courses that focused on what was then called "light-current electronics," as opposed to power electronics. When I graduated at the end of my third year with a first-class honors B.Sc., it was suggested that I stay on for research. I then applied, and received, a BBC Research Scholarship and did my thesis on the "Application of Delta-Modulation to Colour Television Systems" (available on my website).

Using the (then new) emitter-coupled logic from Motorola, I was able to get up to 100MHz clocks, and that was in 1968 mind you. This logic family had to be interconnected using transmission-line techniques with proper termination to prevent reflections! This choice of subject proved rather fortuitous, as it gave me a strong grounding in delta-modulation and its close relation sigma-delta modulation, technology that was later to have a massive impact on audio systems in the 1980s and 90s.

JD: Do you see circuit design as an art?

MH: Yes, I think it is to some extent an art, or a bridge between science and art, in the sense that you develop a "pictorial" solution without knowing exactly how you got there. It sort of develops itself. I have been doing circuit design most of my life and it has become a "sixth sense"; I'm thinking in circuit blocks, sort of. In those early days you would try out different topologies, thinking it through, and trying to picture the currents and voltages in your mind while trying to get to the optimal solution.

JD: Is there a personal style in circuit design? Is there a "Hawksford" style in circuit design?

MH: To a certain extent I think there is. Designers usually solve a circuit problem slightly different from each other, perhaps based on how they learned to solve certain problems earlier and probably also depending on their personality. If you are a digital designer, you might choose to plug some design spec into a program that puts it in an FPGA for you. Likewise, as an IC designer you may have a library of standard cells or modules that you can use to lay out your chip.

In each of these cases the designer seems a step or two removed from the detailed design, making it more anonymous, unlike an analog discrete circuit designer. That said, I think that also sometimes circuits are designed differently for other reasons than you might think. I firmly believe that if you design an amplifier, and you take care of both the critical factors and secondary effects, such designs will tend to "sound" very similar. . . hopefully implying the performance is accurate.

Now, of course, the topology isn't all

of it. People often become preoccupied with topology, but there are many more issues required to make a circuit into a great piece of equipment. There's the power supply, the grounding layout, EMI issues, the quality of the components, the wire used—they all contribute to the final result. So, when you get the topology right—that is, get it to converge in terms of stability and linearity and such—then the secondary factors become important.

Let me give you an example. Most designers are aware that you must avoid sharing supply return paths between power and signal returns. The power return current could cause a "dirty" voltage across the return path that couples into the signal circuit. Even if you use a series supply regulator, you can still have this problem with a rock-stable and clean supply voltage, because the harm is done through the return current.


Now, if you use a shunt regulator, the "dirty" current can be localized and kept from signal returns, and that offers a major advantage. If it still isn't enough, you can use what is called an "active

ground" or "dustbin" where the supply return current is not returned to the ground common at all but disappears into another, separate supply system (Fig. 1A-C).

JD: What is your view on the desirability and usefulness of blind testing to rate the performance of audio equipment?

MH: Well, I think you must use some kind of objective form of subjective testing method to isolate differences between components. Many people do not realize that they have a sort of internal perceptual model that determines how they perceive the auditory input. That internal perceptual model not only takes into account the sound feed from your ears into your brain, but also how you feel, your expectations, how bright is the environment, how relaxed you are, and many other factors. So if your internal perceptual model changes due to those other interference factors changing, your perception of sound can change.

I recall occasions where initially I perceived a certain difference between cables, and then I repeated it the next



The Newest Products and Technologies are Only a Click Away!

mouser.com

- Over A Million Products Online
- More Than 390 Manufacturers
- Easy Online Ordering
- No Minimum Order
- Fast Delivery, Same-day Shipping

MOUSER ELECTRONICS
a tti company
The Newest Products for Your Newest Designs

Mouser and Mouser Electronics are registered trademarks of Mouser Electronics, Inc. Other products, logos, and company names mentioned herein, may be trademarks of their respective owners.

day and my perception was often quite different. I think this was due, at least in part, to my changed internal perceptual model. So some kind of objective test is required, but that said, I'm not a strong advocate of ABX-style double-blind testing (DBT).

The limitation in sensing a change in sound can put us in an unnatural situation, and I'm not sure we then function so reliably or sensitively. Possibly a better approach is a blind method that allows a relaxed and holistic type of lis-

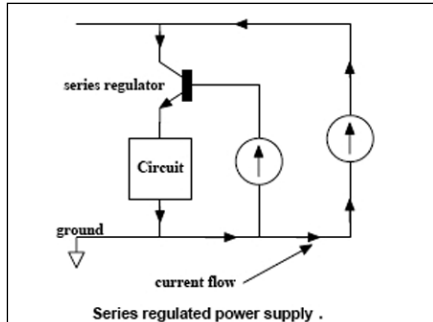


FIGURE 1A: Series regulator return current flow.

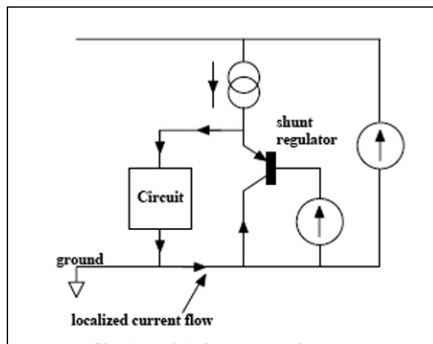


FIGURE 1B: Shunt regulator localizes return current.

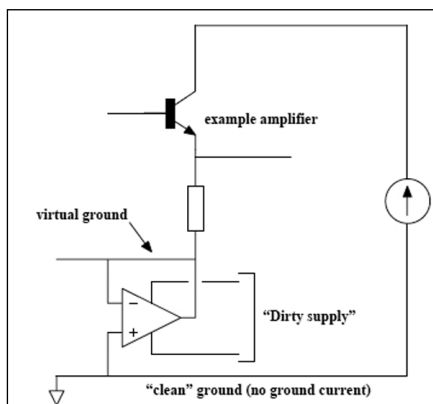


FIGURE 1C: "Active ground" dumps return currents in another supply.

tening session. Of course, with DBT it's easy to get a null result, so it may be a good method if that is your agenda.

My preference is to undertake listening tests in a completely darkened room. The fact that the equipment you listen to isn't hidden and could be identified with just a bit more light makes it much more natural and less stressful than being aware that the equipment is purposefully hidden from you. Also, being able to focus your senses purely on sound and not be distracted by uncorrelated visual input to the brain heightens your auditory perception. It is very easy to do and increases your sensitivity and acuity, especially in spatial terms.

In my experience it is not the same as closing your eyes. It seems that when you close your eyes when listening, you are sort of fooling yourself; it's artificial in a way and it still diverts some mental processing power away from your listening. You should try the dark room sometimes, although it's good to keep a small torch at your side!

JD: Another method correlating measurements with perception that gets some attention lately is trying to extract the difference between the "ideal" signal and the actual signal. In the past year I attended several AES presentations on systems to extract those differences and make them audible, such as the differences between unprocessed music and the MP3 version. Bill Waslo of Liberty Instruments, the makers of the Praxis measurement suite, even has a free version online (AudioDiffmaker).

MH: It is a very powerful technique which I explored formally in 2005¹, and we have employed the extraction of error signals over many years at Essex (see, for example, "Unification" articles on my website). The idea is that you have a system with both a target function (the design response) and the actual function with imperfections, so you can then represent the actual system in terms of the target function and an "error function." There's a lot to it, but as a simple example consider the frequency response of a high-quality CD player. You can assume that the target response here is a flat response to around 20kHz; if that is not the case, then, of course, you need to correct for the nonlinear target response

in the extraction of the error.

If, for example, there are response irregularities below, say, -40dB, it would give around 0.01dB frequency response ripple. You barely see that in the frequency response, as it's actually less than the graph line thickness! However, if you assume a flat target response, extract the error and then plot it on the same graph, which tells you much more.

Figure 2 shows the minute ripples in the response resulting from an imperfect DAC reconstitution filter. This tells you how far below the main signal you have some kind of "grunge" in the system, where ideally it should be below the noise floor. I like this type of presentation because it can inform you of the actual low-level error resulting from small system imperfections (both linear and nonlinear) that may cause audible degradation. This frequency response example is relatively simple, but in the paper¹ I give some examples of using MLS or even music signals to extract the low-level errors from ADCs and DACs.

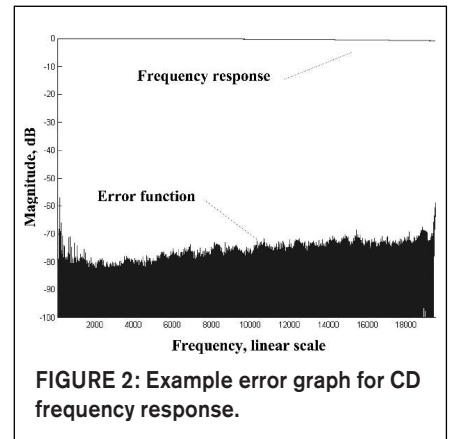


FIGURE 2: Example error graph for CD frequency response.

JD: If you can extract the error, can you then not compensate for it? Sort of "pre-distorting" the signal with the inverse of the error function? Possibly digitally?

MH: Well, compensating analog systems with numbers becomes complicated pretty fast. Most of these errors are dynamic or may arise from some interference of some kind, and although you can measure them accurately, you cannot predict them to any accuracy. The errors vary a lot with time and temperature and what have you.

It's been tried with loudspeakers, where you can develop a Volterra-based model to describe cone motion, for in-

stance, and use inverse processing to linearize it. But it is extremely difficult to keep the compensation model synchronized to the instantaneous cone position and movement. If you're just a little bit off, the results may be worse than without correction. It's much easier and cheaper to design a better driver!

There are some other techniques. There's a guy called David Bird, who used to work for the BBC and was using a current drive technique. One of my ex-Ph.D. research students, Paul Mills (who is now responsible for loudspeaker development at Tannoy), and I have also done some work on that subject. With current drive, the principal error is, in fact, the deviation of the $B\ell$ -product of the driver.

You can therefore measure the $B\ell$ deviation as a function of cone displacement, and if you then monitor the cone position, you can apply inverse $B\ell$ correction such that the force on the cone is proportional to the input current. We actually developed a transconductance power amplifier to current drive a loudspeaker, with several error correction techniques included in the design². We solved the low-frequency damping problem in two different ways. One was to use an equalizer; you measure the hi-Q resonance and then preprocess the signal to obtain the required linear response.

The other approach was to wind a thin wire secondary coil onto the voice-coil former of the drive unit, just voltage sensing, and to process that signal and feed it back into the transconductance amplifier. There was some unwanted transformer coupling from the main voice coil into the sensing coil which we had to compensate for with a filter. But since the main coil was current driven, it didn't matter if it heated up, and since there was no current flowing through the sensing coil, it also did not matter if it heated up. It worked very well; I remember that even using current drive with a tweeter also significantly lowered distortion.

JD: It wouldn't help with things like cone breakup.

MH: No, it wouldn't. And it adds an extra layer of complexity and things that can go wrong. It is also only suitable for

active loudspeaker systems.

JD: One issue that turns up in your work again and again has to do with jitter in some form.

MH: Well, yes, because it turned into an issue after we got the CD from Philips and Sony, and after the first euphoric reports, many people realized that what should have sounded perfect didn't. A major cause was jitter, which hadn't really been considered in those early years, probably because jitter is an "analog aspect" of a digital system. It can also manifest itself in different ways; it can disguise itself like noise (random and relatively benign) or as a periodic disturbance related to power supply ripple or clock signals, which is more objectionable, or it can be correlated with the audio signal, which also can sound quite bad.

So just saying "jitter" is not enough; its effect depends very much on how it manifests itself. In fact, I produced a paper at one time in which I designed a jitter simulator that allowed one to compute specific amounts and type of

jitter, noise or periodic or correlated to the signal, and add that to the clean signal so you could listen to its effect (see sidebar *Hawksford on the Sound of Jitter*).

You can debate its significance, but at least you can point to a measureable and audible defect, whereas a traditional jitter picture with sidebands and what have you doesn't give you a "feel" for what it sounds like.

I did a study with research student Chris Dunn³ (not the Chris Dunn who has published substantial work on jitter) which showed that the jitter introduced by the AES/EBU (or S/PDIF) interface protocol even depends on the bit pattern—in other words, on the music signal itself.

For instance, when you listen to the error signal of the phase-lock loop (PLL) on the digital receiver, you can actually hear the music signal that was transmitted through that digital link! It is distorted, of course, but this was clearly an example of music-correlated jitter.

Now there are known engineering solutions to eliminate that jitter later on,

**T
i
t
a
n
i
u
m

P
r
e
c
i
s
i
o
n**

PHANTOM
Powered Measurement Mic System
7052 Type 1.5™
Titanium Diaphragm
3 Hz to >20 kHz
<20 dBA >140 dB SPL
MK224 Optional
4048 Preamp
2 uV "A" > 5 Vrms
4 Hz > 100 kHz
18 to 60 Vdc
3-4 mA
7052PH/MK224PH **ICP1248**

Superior Long-term Stability
IEC1094 Type1
Temp and Humidity
Performance
Now in Stock

**A
c
c
e
r
e
m
e
t
e
r
s
,
M
i
c
s
&
m
o
r
e**

ACO Pacific, Inc.
2604 Read Ave., Belmont, CA 94002, USA
Tel: 650-595-8588 Fax: 650-591-2891
www.acopacific.com sales@acopacific.com
ACOustics Begins With ACO™

but it doesn't always happen in equipment, so there is the possibility when you transmit digital audio through a band limited link (and it is always band limited), you can get correlated jitter just from that process. We also showed that if you code the L and R signals separately, invert one of them, and then send both over that interface, almost all of that signal-related jitter would disappear. But it wasn't picked up on; such is the law of standards!

JD: How would you design the "ideal" DAC?

MH: The DAC chips themselves nowadays are very good indeed. Where you see the differentiation in quality is in stages like the I/V converter, a seemingly innocent subject. The sharp switching edges from the DAC output can only be perfectly reproduced with an I/V op amp that has infinite bandwidth and no limit on slew-rate. Any practical circuit will have nonlinearity and slew rate limits such that a transient input signal can slightly modulate the open-loop (OL) transfer of the op amp.

Modulating the OL transfer function means you modulate the circuit's closed-loop (CL) phase shift. What is interesting is that it looks remarkably similar to correlated jitter; they share

a family resemblance (**Fig. 3**). It also is similar to what people have been talking about as dynamic-phase modulation in amplifiers. Whenever an amplifier stage needs to respond very quickly, it tends to run closer to open loop and therefore is more susceptible to open loop non-linearity. So the I/V stage is clearly a critical stage, and although the underlying processes are different, the resulting signal defects may manifest themselves as correlated jitter, especially as the timing errors occur close to the sampling instants where signal rate-of-change is maximum.

Anyway, I really think we should not talk about phase modulation here, as that is more appropriate for sine wave signals and linear systems. We should talk about temporal modulation instead. There are many ways you can solve these issues once you understand them, possibly to design your I/V converter to be very wide band, or using a very linear open-loop circuit, or maybe some low-pass filtering between DAC and I/V stage. What you end up with⁴ is a discrete current-steering circuit that runs partially open loop and integrates the I/V conversion and low-pass filtering into one circuit, rather than bolting an I/V stage to a subsequent second-order filter as is normally done. Consequently,

you minimize the active circuitry involved (**Fig. 4**).

If you think about it, theoretically we are trying to make circuitry work flawlessly up to infinitely high frequency, which in principle cannot be reached. So at one time I thought maybe we need a totally different way to solve the problem of critical timing issues in DACs.

One possible solution I came up with was to modulate the reference voltage of an R-2R ladder DAC with a synchronized raised-cosine waveform. Rather than the DAC output staircase signal jumping "infinitely" fast to a new level at every clock pulse, it effectively made the new level the same as the previous and then ramped it up, so to speak, to the new level using a raised-cosine shape with the same period as the clock (**Fig. 5A, B**). Consequently, adjacent samples were linked by raised-cosine interpolation rather than a rectangular step function. This also helps a little with signal-recovery filtering. So, the rate-of-change of the currents coming from the DAC was dramatically reduced. I built a prototype to proof the principle and it dramatically reduced the timing and transient errors in the I/V stage.

In many ways I view I/V conversion after a DAC as the digital-system equivalent of a MC phono preamplifier.

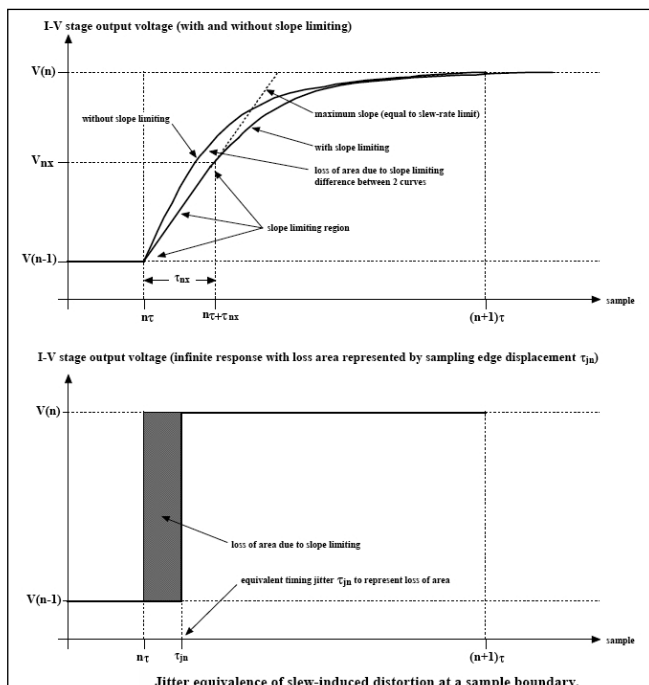


FIGURE 3: Slew-rate limiting in I/V converters has jitter equivalence.

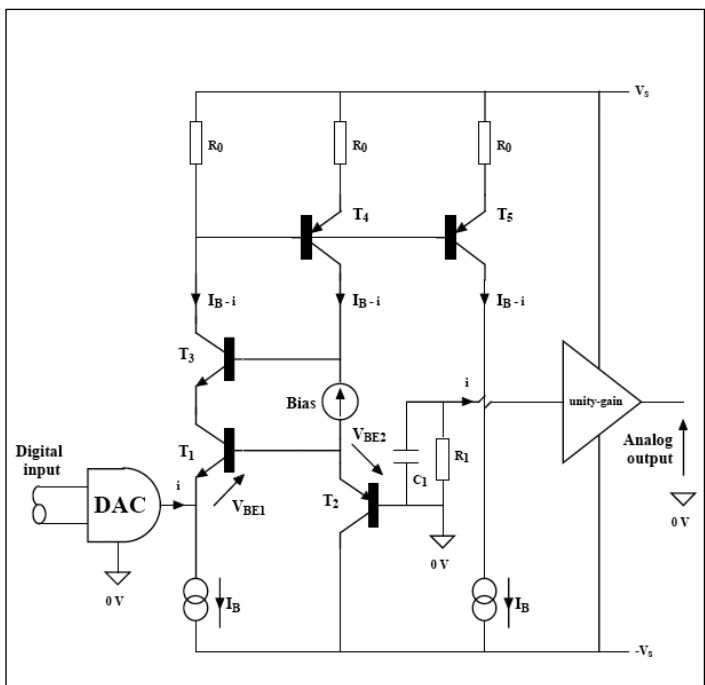


FIGURE 4: An open-loop I/V converter with integrated filter and input-stage error correction.

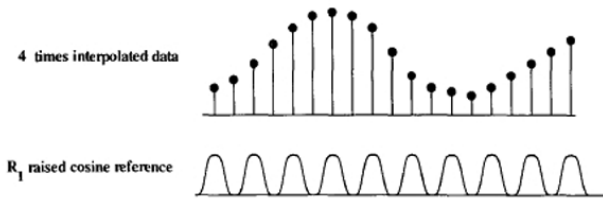


FIGURE 5A: Audio samples combined with raised-cosine DAC reference combine to . . .

composite signal
cosine interpolation

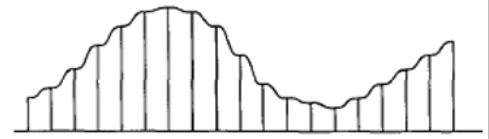


FIGURE 5B: ...dramatically reduce harmonics in analog output current reducing I/V slew rate requirements.

Although the application is totally different, I find that if you have learned to design a good MC preamp, that actually helps you to design a good I/V stage!

Another important issue is to locate the clocking source for the DAC very close to the DAC itself and slave everything, including the transport, to that clock. The clock should be free running, very pure and not controlled by a PLL; very often a PLL will only move the jitter to another frequency band and the frequency of oscillation is bound to wobble. There's nothing wrong with a free-running clock as long as you make sure that your data samples arrive on time, and you can do that with an appropriate buffer memory and data request protocol.

The CD player is a horrible RF environment, and you need to get the clock and DAC away from that source; just place a portable radio close to a CD player and do your own EMI testing! Even local supply bypassing of the DAC can couple noise into the supplies for the clock and increase jitter! So now you can list a few issues necessary to get it "right" in a digital playback system: the I/V; all the massive problems from EMI, supply, grounding, and so forth; and putting a clean clock right where you need it. I would speculate that if you gave a circuit topology to three different engineers to lay out a PCB and then build it, you would end up with three different results purely due to the differences in layout and component parts selection.

Now, how do you get a clean, stable DAC clock in your system? Suppose you have a transport and a DAC interconnected and you try to stabilize the DAC clock at the end of the digital interconnect; in principle you will succeed long-term, but in the short term that clock will wobble about and produce jitter. And even if you have your super

DAC with clean clock and PLL with low filter cutoff, you still are faced with an input signal that is not necessarily clean. It can induce ground-rail interference and your supply may become contaminated, so that incoming jitter may then bypass all your hard work and still end up affecting the output of the DAC. Memory buffers can, of course, help in the smoothing process, but beware of power supply and ground-rail noise.

JD: Benchmark Media Systems claims that their DAC1 products succeed to almost get rid of jitter completely because they put a very clean clock next to the DAC with an option to slave the transport clock to it. Their USB inter-

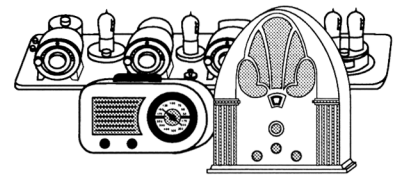
face apparently works the same in that it actually "requests" samples from the media player or PC, at a rate dictated by the clean DAC clock.

MH: Yes, network audio turns a lot of these issues upside down. It actually works the other way around. You put the DAC clock in charge, and it can be very clean and free running—no PLL—very low phase-noise. It is the way it's done in the Linn Klimax DS; the clock effectively "demands" audio samples from the network or NAS drive at its own pace to keep the buffer memory filled. I found the Klimax one of the cleanest and most articulate digital replay systems I've ever heard. For me, this is the way to go.

Now, I think that a good high-reso-

FREE SAMPLE

IF YOU BUY,
SELL, OR COLLECT
OLD RADIOS, YOU NEED...



ANTIQUE RADIO CLASSIFIED

Antique Radio's Largest Monthly Magazine
68 Page Issues!

Classifieds - Ads for Parts & Services - Articles
Auction Prices - Meet & Flea Market Info. Also: Early TV, Art Deco,
Audio, Ham Equip., Books, Telegraph, 40's & 50's Radios & More...

Free 20-word ad each month for subscribers.

Subscriptions: \$24 for 6-month trial.
\$45 for 1 year (\$60 for 1st Class Mail).

Call or write for foreign rates.

The Collector's Guide to Antique Radios, 7th Edition by John
Slusser & Radio Daze: 10,000+ prices, 1,200 color photos - \$24.95
Payment required with order. Free shipping! In Mass. add 5% tax.



A.R.C., P.O. Box 802-A16, Carlisle, MA 01741

Toll free: (866) 371-0512 — Fax: (978) 371-7129



Web: www.antiqueradio.com — E-mail: ARC@antiqueradio.com

lution 24/96 or 24/192 audio file, delivered through a top-notch network DAC, can sound absolutely stunning, and I have some wonderful Chesky recordings at 192/24. But even a 16/44.1 CD recording, when played through a network DAC implemented correctly, can also sound pretty spectacular. Maybe not quite as good as the hi-res stuff, but very, very good nevertheless, and you would be hard-pressed to hear the difference. Of course, the CD recording quality has to be first rate, but that's a very different story!

JD: There are several companies out there trying to make this happen. Mark Waldrep's iTrax.com allows you to download music on a pay-per-download basis, where the price depends on the quality. You pay perhaps \$2 for a 24/96 download, giving you actually the recording master, down to perhaps \$0.69 for the MP3 version of the same music.

MH: Yes that's an extremely good way to do it, and if you look at the Linn website you'll see that they offer similar services. Linn also gives you the option to buy their hi-res content pre-loaded onto a NAS drive, which for some people is more convenient than the hassle of downloading and setting up playlists on the PC. Chesky Records is also a very excellent source of music, and they actually have some 24/192 material. The B&W model that you subscribe to and obtain regular downloads is also interesting.

I think if you make the price right and especially if you provide high-quality recordings, people won't cheat, generally. And these specialty music providers also are extremely careful about the recording quality of the music they list, so that is one more uncertainty removed from buying a CD, where you may like the music but maybe the recording quality isn't so good. So to me it looks that networked audio delivery is slowly coming of age, yes.

JD: Can we spend a few words on loudspeakers and their part of the audio performance? In your keynote speech to the Japan AES regional conference in

2001⁵, you saw a great future to Distributed-Mode Loudspeakers (DML) to diminish the influence of room acoustics on music reproduction.

MH: Yes, indeed. You see, a DML has some great advantages. Rather than having a piston action like a traditional cone or panel speaker, a DML consists of a myriad of vibrating areas on a panel where in effect the impulse response of each of these small areas has low correlation with its neighbor. That is the significant thing which makes the polar response spatially diffuse. Now many people feel uneasy with that because it looks as though this will lead to a diffuse field, and it does!

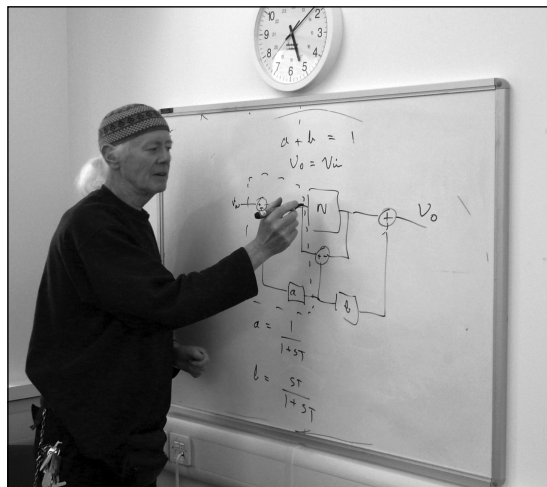


PHOTO 2: The Professor in his element: explaining feedback/feedforward concepts.

But, it does *not* lead to a significant breakdown of spatial sense or of instrument placing, because although the field becomes diffuse, the directivity characteristic does not. The major advantage is that the room acoustic reflections add with a significant degree of incoherence; they average out, so to speak, they are diffused. It helps to make an analogy between coherent light (from a laser) and incoherent light (from conventional lighting); in the latter the lack of interference results in much more even illumination without interference patterns.

To be honest, the sound stage itself does suffer a little bit, but the advantages can outweigh the disadvantages. You have no defined sweet spot, but you have no "bad" spot either when you move around the room. Furthermore, you could construct a DML as a flat panel, make it look like a painting, for

instance, which makes 5.1 or 7.1 surround so much friendlier in the living room! You could even make them an integral part of your flat-panel video screen or, in principle, weave them into the fabric of the room architecture.

But as far as I know only NXT has taken up the technology for use in specific circumstances, and successfully, I might add. Now, for regular stereo use, DMLs may not quite give you the sharp holographic image traditional loudspeakers can achieve, but in practice that will not often happen anyway. People seldom place their loudspeakers in the correct position in the room to realize the full potential for imaging.

Now that we are discussing the diffuse characteristics of DML loudspeakers, it reminds me of something similar I have done with crossover filters⁶, where the crossover transfer functions have a kind of random component added to them in the crossover region. The issue is: If you add the responses in a crossover on-axis, they add up and you should get a flat combined response. But if you add them off-axis, you normally would get a dip at the crossover frequency due to interference from non-coincident drivers. But with noise-like frequency responses, then for the off-axis sum, the interference is dispersed and the dip spreads out over

some frequency band around the crossover frequency and becomes less pronounced. You diffuse the problem, so to speak. It's similar to what DMLs do: I call them *stochastic crossovers* (Fig. 6A, B).

JD: You would favor active speaker systems?

MH: Yes. I believe that active loudspeakers have a number of advantages due to using separate amplifiers for each frequency range. Intermodulation, either directly or through the power supply, is much easier to avoid, as different amplifiers handle different regions of the audio band. Amplifier peak power requirements are also relaxed, in turn making it a bit easier to build high-quality amplifiers. And, assuming close proximity between amplifier and its associated driver, then those pesky loudspeaker cables are largely removed from

the equation (smiling).

In the 80s I consulted on what I believe was the first digitally corrected active speaker, developed by Canon. In fact, Canon funded a research project at Essex where we (that is, Richard Bews, now proprietor of LFD Audio, and me) produced a system that was ultimately demonstrated at their research facility in Tokyo. [JD: I have listened to that system in a large room in a General's castle in Belgium in 1984 or thereabouts; it left a vivid memory!]. There are two key aspects to digital loudspeaker processing. First, you can use it as a digital crossover filter, which will allow you to very easily correct any loudspeaker response errors as part of the crossover code. This is much simpler and less costly than using high-quality analog crossovers.

But once you have the capability, the urge is often to use it for room correction as well. I'm not a fan of that, simply because (ideal) room correction can typically be done for only one specific listener location, the ubiquitous "sweet spot." At any other location, the response, including the phase response, goes down the drain. The problem is very much wavelength dependent, so accurate correction tends to be limited to low frequency with less precise frequency shaping being applied at higher frequency. So, I'd use digital loudspeaker processing only for crossovers and loudspeaker correction. You should deal with room influences (other than low-frequency modal compensation) through other methods, where intelligent loudspeaker placement is one powerful way to improve your stereo reproduction.

Now, there's another aspect to digital loudspeaker equalization. Loudspeakers are a bit like musical instruments really; they have their own coloration and character where often you chose what appeals to you. Now if you equalize that loudspeaker, you may compromise the attribute that you liked, so, although being

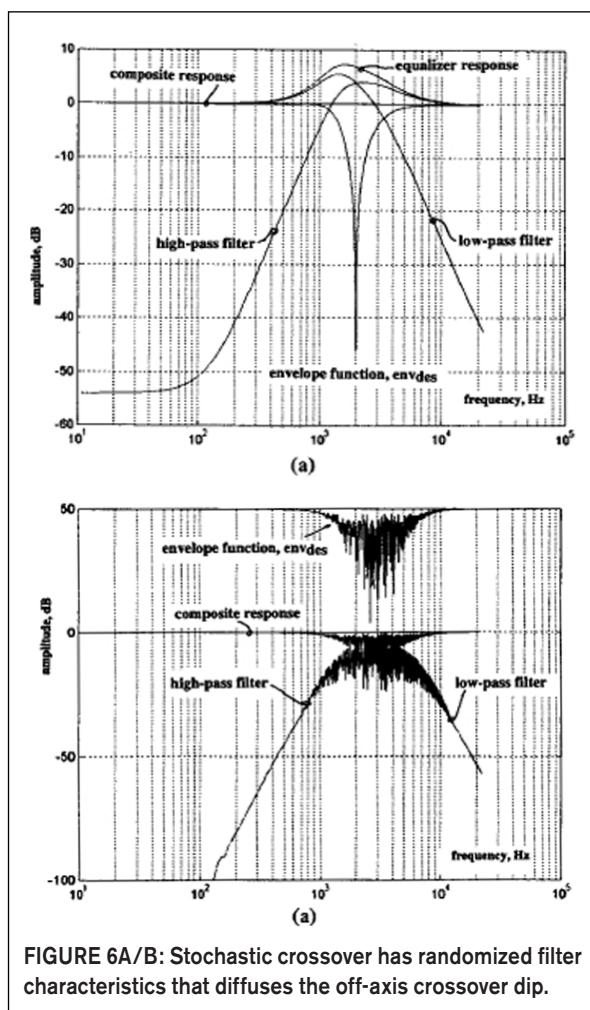


FIGURE 6A/B: Stochastic crossover has randomized filter characteristics that diffuses the off-axis crossover dip.

more accurate you may have the impression something is missing or wrong. You should therefore consider digital loudspeaker correction an integral part of the design, just as is a passive crossover.

You shouldn't try to play with the correction or have switchable multiple corrections, just as you wouldn't want switchable multiple passive crossovers (apart from maybe some slight level correction in the low- or high-frequen-

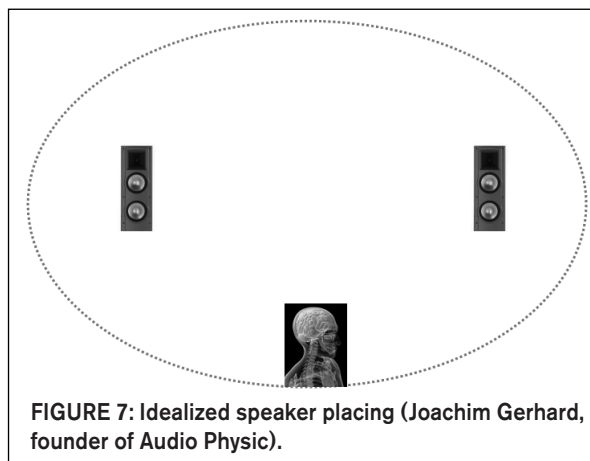
cy range).

JD: That's the philosophy of AudioData in Germany. They sell one of these digital speaker/room correction systems. They will come to your home and set the system up to your liking with the corrections and all. They do not encourage you to play around with it. They put your particular correction files on the Internet, so when something goes wrong in your system you can download and re-install them. But in a practical sense it is a one-time thing—to your room, your speakers, and your taste, if you will.

MH: Yes, that's sensible. People should listen to the music, not to their loudspeakers or correction processing! There's one more thing I'd like to mention about placement. In the past, I have worked closely with Joachim Gerhard (founder of loudspeaker company Audio Physic in Germany), who came up with one of the best placement schemes I know. You need to avoid reflections coming from the same direction as the direct sound, because this distorts your spatial perception (it messes with the head-related transfer functions we use in sound localization). Joachim drew an ellipse that just touched the inside of the room boundary. You then place the loudspeakers at the foci of this ellipse and place yourself at the middle of a long wall boundary (Fig. 7).

So, not only are the reflections now remote from the direct sound direction, they are also separated more in time, where both these effects have a major impact on localization and perception of the recording venue acoustics. In the context of a high quality two-channel audio system (using Audio Physic loudspeakers), it achieved one of the finest stereo soundstages I have ever heard. The sound seems to hang in there between the widely spaced loudspeakers; you can hear all detailed venue acoustics, very convincing, especially when

rected as the direct sound, because this distorts your spatial perception (it messes with the head-related transfer functions we use in sound localization). Joachim drew an ellipse that just touched the inside of the room boundary. You then place the loudspeakers at the foci of this ellipse and place yourself at the middle of a long wall boundary (Fig. 7).



the room is darkened! Also, having the loudspeakers widely spaced increases the difference signal between our ears, which helps to produce a more 3-D like image. Very interesting.

JD: Siegfried Linkwitz makes the point that you should place the speakers such that there is a minimum of 8ms temporal separation between direct and reflected sound, so that your brain can separate out the recording venue acoustics from the room acoustics.

MH: Yes, I very much agree with that. With most stereo placements, you add room reflections to the sound which “dilute” the spatial properties. So you may think that you have a larger image, but that is because it is blurred! The ellipse-based placement I just mentioned separates the direct and reflected sound both in direction and timing, and so helps your brain to keep the original spatial properties intact.

JD: And then there’s the issue of the speaker cables. I remember this paper you wrote in Marrakech I believe.

MH: I wrote a lot of papers in Mar-

rakech! I like to get away now and then to a quiet place, away from daily distractions. I would get up at 5:00 AM and then work for three or four hours. Those hours can be very productive, what you would call “quality time.”

But you probably refer to my article on cable effects and skin depth⁷. That one attracted a lot of criticism, and although there was a degree of speculation in it, I stand behind the major conclusions to this day. If I write something like that I always try to indicate what is fact, as we electronic engineers understand it, and what is more of a gut feeling.

In that article I addressed the topic of skin effect in the context of audio; however, it seems what I said was widely misunderstood and misquoted. Say you have a coaxial cable, consisting of lossless conductors (i.e., zero resistivity). All AC-current would then flow only on the two opposing inner surfaces as electromagnetic forces would push the charge carriers away from each other; the current would not penetrate the conductor and skin depth would tend to zero.

Here all the electromagnetic energy would flow only in the dielectric space

between the two conductors, propagating in an axial direction along the cable close to the speed of light with the conductors acting as guiding rails. Here the electric field is radial, while the magnetic field is circumferential with power flow in a direction mutually at right angles to these two fields that is along the cable axis. Now because all practical conductors are lossy, you inevitably get potential differences along each conductor, and this means that at the cable surface there must be a component of the electric field in an axial direction; however, the surface magnetic field is still circumferential.

When you consider these two fields, the direction which is mutually at right angles is now directed in a radial direction into the interior of each conductor. As a consequence, there is a propagating electromagnetic wave (loss field) within the conductor itself. Think of it as energy spilling out into the guiding rails which are now partially lossy and therefore must dissipate some energy.

When you solve Maxwell’s equation for propagation in a good conductor, you obtain a decaying wave because some energy is converted into heat. Also, the velocity is very slow and frequency dependent. It is this slowly propagating wave that determines the internal current distribution in the conductor and is the basis of skin depth; it also explains why skin depth increases with decreasing frequency. The “loss field” is at maximum at the surface and decays exponentially into the conductor.

So your current is no longer confined to the conductor surface but penetrates into the conductor; it depends on frequency and decays exponentially. Therefore, when you consider the series impedance of a cable, you find it is made of two principal parts. There is the inductive reactance due to the magnetic field within the dielectric between the conductors, and this, as you would expect, rises as 6dB/octave. However, the magnetic flux trapped inside the conductors has both a resistive and an inductive component. If the skin depth is such that the current has not fully penetrated all the way to the center of the conductor, then this component of impedance approximates to 3dB/octave.

What happens in practice depends

HAWKSFORD ON THE SOUND OF JITTER

There is a lot of talk about the effect of jitter on reproduced music. To help people to get a feel for it, I prepared some test files with well-defined amounts of jitter. Basically, what I did was to calculate the variation in digital sample values when a specific jitter signal would be present, and alter the samples accordingly. The tracks are on the *audioXpress* website and can be listened to or downloaded for your own use. Those of you adventurous enough to go through the details are referred to the reference below.

Track 0 is the original music, and the following tracks are the resulting amplitude-normalized “distortion” or error signals resulting from the types of jitter as listed:

Track 1: TPDF (triangular probability distribution function) noise-based jitter

Track 2: 2 equal-amplitude sinewaves (44100 - 50) Hz and (44100 + 50) Hz based jitter

Track 3: 3 sinewaves 50Hz, 100Hz, and 150Hz, amplitude ratio 1:0.5:0.25 based jitter

Track 4: sinewave 0.2Hz based jitter

Track 5: sinewave 10Hz based jitter

Track 6: 3 equal-amplitude sinewaves 1Hz, 50Hz, and 44100/4Hz based jitter

Track 7: All of the above 6 jitter sources combined.

NOTE: In a real-world situation these error signals require amplitude scaling to match the system jitter level; they have been normalized here to allow them to be auditioned.

Enjoy!

Reference: Jitter Simulation in high-resolution digital audio, Presented at the 121st AES Convention, October 5-8, 2006, San Francisco, Calif.

on the actual cable geometry and therefore which aspect of the impedance is dominant. I could go on, but I suggest you download "Unification" from my website for more information. So to conclude, at lower frequency the penetration is deeper while as frequency rises, the internal conductor impedance increases as the current becomes more confined to the surface layer, just as it would be if the conductor was lossless to begin with.

I also put some numbers to it and it turns out that when your conductor diameter is less than about 0.8mm, there are almost no skin effects even up to 20kHz.

Now, going back to loudspeaker cables, ideally you would want them to have just a very low value of resistance over the audio frequency band with no reactance. Due to the phenomena described above, that may not always be true, but there lies the art of loudspeaker cable design!

However, in understanding the problem with loudspeaker cables that can impact their perceived subjective per-

formance, there is another important factor. Even if cables are completely linear, they still feed loudspeaker systems that offer a nonlinear load due to drive unit impedances changing dynamically with cone displacement, suspension nonlinearity, and possibly saturation effects in crossover components. As a result, the current entering the loudspeaker is a nonlinear function of the applied voltage; this, in turn, means that any voltage drop across the (even perfectly linear) cable also has a nonlinear component which must be added to the loudspeaker input voltage. It is interesting to audition these error signals in real-world systems where distortion can be clearly audible. So in this sense cables do impact the final sound where this process is probably responsible for perceived differences in character or coloration. *aX*

This interview with Professor Hawksford continues next month.

REFERENCES

1. "System Measurement and Identification

Using Pseudorandom Filtered Noise and Music Sequences," *JAES*, Vol. 53, No. 4, 2005 April.

2. "Transconductance Power Amplifier Systems for Current-Driven Loudspeakers," *JAES*, Vol. 37, No. 10, 1989 October.

3. C. Dunn and M. O. J. Hawksford, "Is the AES/EBU/SPDIF Digital Audio Interface Flawed?," presented at the 93rd Convention of the Audio Engineering Society, *JAES (Abstracts)*, vol. 40, p. 1040 (1992 Dec.), preprint 3360.

4. Discrete integrated I/V.

5. Ultra high-resolution spatial audio technology for HDTV on DVD, keynote speech at AES 10th regional convention, Tokyo, Japan, June 13-15, 2001.

6. "Digital Signal Processing Tools for Loudspeaker Evaluation and Discrete-Time Crossover Design," *JAES*, vol. 45 no. 1-2, 1997 Jan./Feb.

7. Electrical Signal Propagation & Cable Theory, Malcolm Omar Hawksford, October 1995, available online at www.stereophile.com/reference/1095cable/.

Note: All papers referenced here and many more are available at Professor Hawksford's website, www.essex.ac.uk/csee/research/audio_lab/malcolms_publications.html

The International Electronics magazine IS HERE!

Now available in a North American edition, *Elektor* brings you electronics projects tested by engineers in their extensive laboratory in the Netherlands. You'll join a worldwide community of electronics professionals, students and enthusiasts!

Subscribe at the introductory rate of only \$39.95 for 11 issues including the double summer issue!

CANADA ADD \$11 FOR POSTAGE.

**CALL 1-888-924-9465
or order on-line at
www.elektor-usa.com!**

