

Community Snapshot 2011

CD 2: Greenwich Village, Soho

Demographics

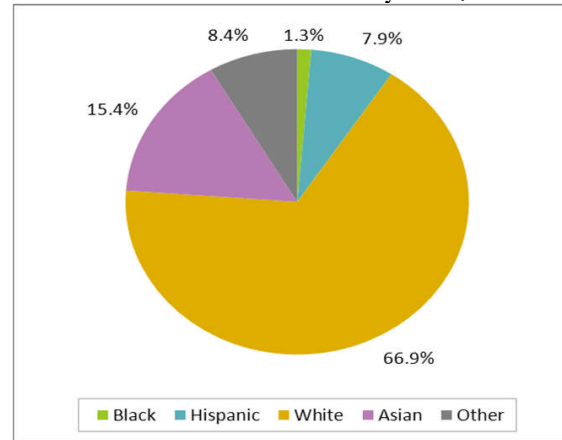
Population by Age

Age Group	Location NYC		Manhattan		3_CD 2	
	N	%	N	%	N	%
Under 18 Years of Age	1,767,300	17.8%	232,419	12.8%	7,936	8.1%
Under 6	614,653	34.8%	88,903	38.3%	3,552	44.8%
Ages 6-11	560,938	31.7%	71,029	30.6%	2,440	30.7%
Ages 12-17	591,709	0.33481	72,487	0.311881	1,944	0.24496
Total Population	8,171,680		1,577,385		90,016	

Population by Race/Ethnicity, Under 18 Years of Age

Race	Location NYC		Manhattan		3_CD 2	
	N	%	N	%	N	%
Black	441,041	25%	37,785	16%	104	1%
Hispanic	626,547	35%	86,951	37%	629	8%
White	438,257	25%	77,497	33%	5,313	67%
Asian	195,817	11%	19,502	8%	1,224	15%
Other	65,651	4%	10,684	5%	666	8%

CD 2: Children Under 18 Years by Race/Ethnicity



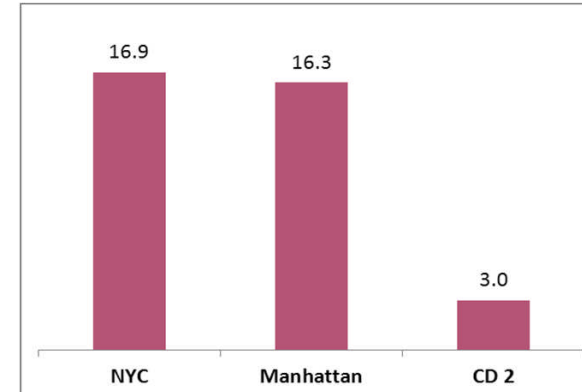
Community Snapshot 2011

CD 2: Greenwich Village, Soho

Abuse & Neglect (2011)

	NYC		Manhattan		CD 2	
	N	%	N	%	N	%
Abuse/Neglect Investigations	58,581		7,134		60	
Abuse/Neglect Indication Rate		38.3%		40.4%		36.7%
Victimization Rate per 1,000	16.9		16.3		3.0	

Victimization Rate



Investigations by Race/Ethnicity

	NYC		Manhattan		CD 2	
	N	%	N	%	N	%
Black	22,939	39.3%	2,611	36.1%	5	8.3%
Hispanic	22,227	38.1%	3,183	44.1%	11	18.3%
White	4,364	7.5%	490	6.8%	28	46.7%
Asian	723	1.2%	93	1.3%	1	1.7%
Other/Unknown	8,110	13.9%	847	11.7%	15	25.0%

Victimization Rate by Race/Ethnicity

	NYC		Manhattan		CD 2	
	N	%	N	%	N	%
Black	28.2		38.5		19.2	
Hispanic	18.9		19.4		6.4	
White	3.8		2.1		1.7	
Asian	3.7		3.9		3.3	

Allegations

	NYC		Manhattan		CD 2	
	N	%	N	%	N	%
Physical Abuse	17,947	15.4%	2,004	14.6%	13	11.4%
Educational Neglect	11,858	10.2%	1,396	10.2%	5	4.4%
Lack of Medical Care	5,217	4.5%	648	4.7%	6	5.3%
Neglect	63,274	54.5%	7,617	55.4%	71	62.3%
Psychological Abuse	694	0.6%	96	0.7%	1	0.9%
Sexual Abuse	2,987	2.6%	316	2.3%	3	2.6%
Other	14,194	12.2%	1,669	12.1%	15	13.2%
Total Allegations	116,171		13,746		114	

Reabuse

	NYC		Manhattan		CD 2	
	N	%	N	%	N	%
Repeat Indicated Investigations within 6 Months		12.4%		11.4%		12.0%

Community Snapshot 2011

CD 2: Greenwich Village, Soho

Foster Care Population April 2012

Foster Care Population by Age

	NYC		Manhattan		CD 2	
	N	%	N	%	N	%
Ages 0-5	4,790	35.0%	895	40.1%	3	50.0%
Ages 6-11	3,367	24.6%	505	22.6%	1	16.7%
Ages 12 and Older	5,525	40.4%	830	37.2%	2	33.3%
Total Children in Foster Care	13,682		2,230		6	

Foster Care Population by Gender

	NYC		Manhattan		CD 2	
	N	%	N	%	N	%
Male	6,700	49.0%	1,139	51.1%	2	33.3%
Female	6,982	51.0%	1,091	48.9%	4	66.7%

Foster Care Population by Race/Ethnicity

	NYC		Manhattan		CD 2	
	N	%	N	%	N	%
Black	7,547	55.2%	1,147	51.4%	3	50.0%
Hispanic	4,250	31.1%	789	35.4%	1	16.7%
White	615	4.5%	68	3.0%	1	16.7%
Asian	149	1.1%	14	0.6%	0	0.0%
Other/Unknown	1,121	8.2%	212	9.5%	1	16.7%

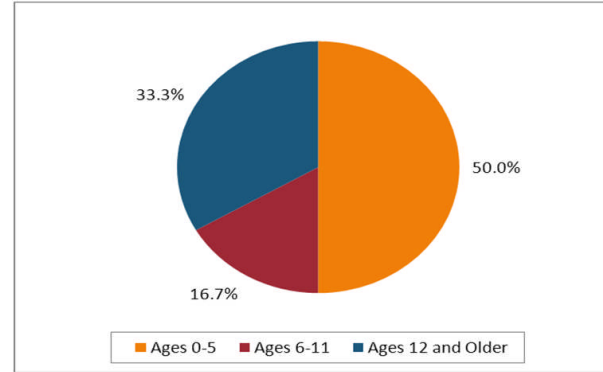
Level of Care

	NYC		Manhattan		CD 2	
	N	%	N	%	N	%
Foster Boarding Home	7,599	55.5%	1,236	55.4%	4	66.7%
Kinship	4,645	33.9%	741	33.2%	2	33.3%
Residential	1,366	10.0%	227	10.2%	0	0.0%
Other/Unknown	72	0.5%	26	1.2%	0	0.0%

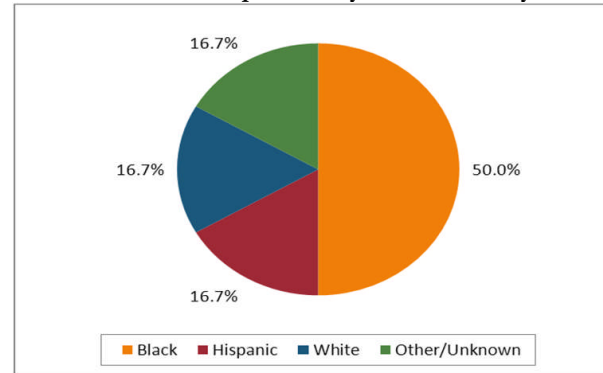
Foster Care Stay (2011)

	NYC		Manhattan		CD 2	
	N	%	N	%	N	%
Children with One or More Transfers During Current Stay (In Care CY 2011)	6,063	28.6%	940	30.0%	5	50.0%

CD 2: Foster Care Population by Age



CD 2: Foster Care Population by Race/Ethnicity



Community Snapshot 2011

CD 2: Greenwich Village, Soho

Placements (2011)

	NYC		Manhattan		CD 2	
	N	%	N	%	N	%
No. of Placements from Boro/CD	5,872		907		2	
No. of Placements into Boro/CD	5,024		737		1	
Placement Rate per 1,000	3.2		3.9		0.3	
Community Placements		36.6%		24.3%		50.0%
Adolescents Placed in Family Settings	1,070	51.2%	170	55.6%	0	0.0%
Prior Foster Care Placement	1,332	22.7%	187	20.6%		0.0%

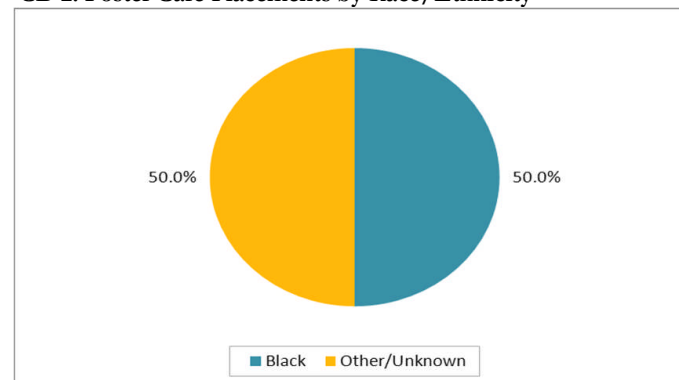
Placements by Race/Ethnicity

	NYC		Manhattan		CD 2	
	N	%	N	%	N	%
Black	3,003	51.1%	450	49.6%	1	50.0%
Hispanic	1,969	33.5%	323	35.6%	0	0.0%
White	293	5.0%	37	4.1%	0	0.0%
Asian	89	1.5%	8	0.9%	0	0.0%
Other/Unknown	518	8.8%	89	9.8%	1	50.0%

Placement Rate by Race/Ethnicity

	NYC		Manhattan		CD 2	
	N	%	N	%	N	%
Black	6.8		11.9		9.6	
Hispanic	3.1		3.7		0.0	
White	0.7		0.5		0.0	
Asian	0.5		0.4		0.0	

CD 2: Foster Care Placements by Race/Ethnicity



Community Snapshot 2011

CD 2: Greenwich Village, Soho

Placements (2011)

Sibling Placements

	NYC		Manhattan		CD 2	
	N	%	N	%	N	%
Percent Sibling Group Placed Together		87.3%		88.3%		0.0%

Sibling Group Size of Children Placed

	NYC		Manhattan		CD 2	
	N	%	N	%	N	%
Child alone	2,637	44.9%	412	45.4%	2	100.0%
Groups of 2	1,440	24.5%	236	26.0%	0	0.0%
Groups of 3	960	16.4%	157	17.3%	0	0.0%
Groups of 4 or more	833	14.2%	102	11.2%	0	0.0%

Level of Care

	NYC		Manhattan		CD 2	
	N	%	N	%	N	%
Foster Boarding Home	3,172	54.1%	566	62.5%	1	50.0%
Kinship	1,644	28.1%	204	22.5%	0	0.0%
Residential	1,044	17.8%	136	15.0%	1	50.0%

Reason for Placement

	NYC		Manhattan		CD 2	
	N	%	N	%	N	%
Abuse/Neglect	4,373	74.5%	704	77.6%	1	50.0%
PINS	281	4.8%	24	2.6%	0	0.0%
JD	394	6.7%	50	5.5%	0	0.0%
Voluntary	249	4.2%	35	3.9%	1	50.0%
Other/Unknown	575	9.8%	94	10.4%	0	0.0%

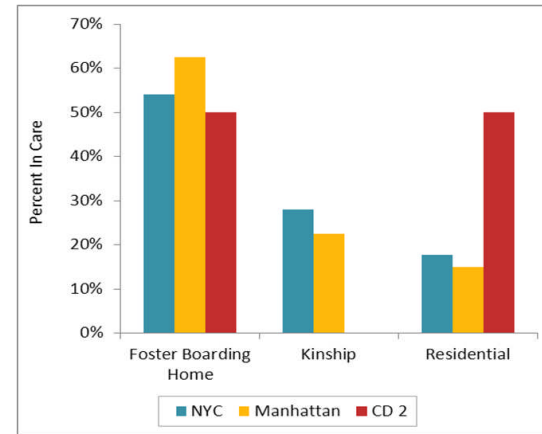
Additional Outcomes

Discharge Destinations

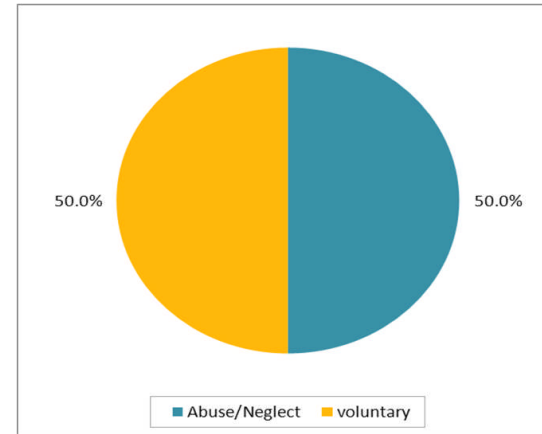
	NYC		Manhattan		CD 2	
	N	%	N	%	N	%
Number of Discharges of Children from Boro/CD	6,712		948		4	
Reunification	4,262	63.5%	638	67.3%	1	25.0%
Adoption	1,231	18.3%	135	14.2%	2	50.0%
Aged out/APPLA	888	13.2%	136	14.3%	1	25.0%
AWOL	35	0.5%	5	0.5%	0	0.0%
Other/Unknown	296	4.4%	34	3.6%	0	0.0%

	NYC		Manhattan		CD 2	
	N	%	N	%	N	%
Percent Reunified within a Year of Placement		47.4%		46.5%		100.0%
Re-entry rate		10.5%		14.3%		100.0%

Level of Care



CD 2: Reason for Placement



Community Snapshot 2011

CD 2: Greenwich Village, Soho

Child Care

Enrollment

	NYC		Manhattan		CD 2	
	N	%	N	%	N	%
Number of Children Enrolled in Contracted Child Care (excludes vouchers)	27,492		5,443			
Number of Children Enrolled in Head Start	18,978		4,336		101	

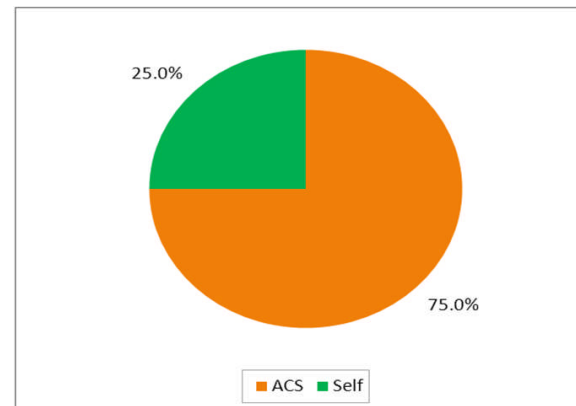
Preventive Services

	NYC		Manhattan		CD 2	
	N	%	N	%	N	%
Number of Families Receiving Purchased Preventive Services (March 2012)	9,343		1,286		4	

Referral Source for Families Receiving Purchased Preventive Services (March 2012)

	NYC		Manhattan		CD 2	
	N	%	N	%	N	%
ACS	6,010	64.3%	846	65.8%	3	75.0%
PINS/DAS	3	0.0%	0	0.0%	0	0.0%
Self	689	7.4%	89	6.9%	1	25.0%
Other	2,641	28.3%	351	27.3%	0	0.0%

CD 2: Purchased Preventive Services Referral Source



Community Snapshot 2011

CD 2: Greenwich Village, Soho

Youth and Family Justice

Detention Admissions by Age

	NYC		Manhattan		CD 2	
	N	%	N	%	N	%
Ages 7-12	115	3.5%	9	1.9%	0	#DIV/0!
Ages 13-15	2,557	78.4%	367	75.8%	0	#DIV/0!
Ages 16 and Older	591	18.1%	108	22.3%	0	#DIV/0!
(blank)	0		0		0	
Total Youth in Detention	3,263	100.0%	484	100.0%	0	#DIV/0!

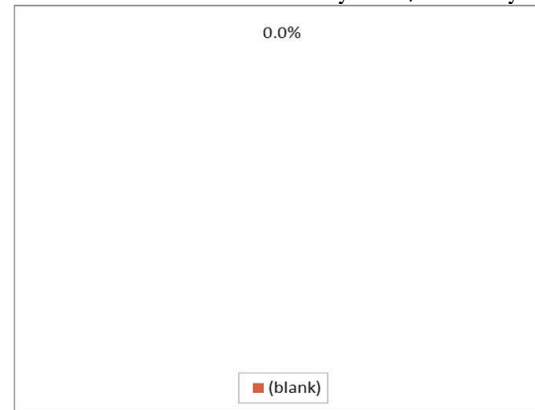
Detention Admissions by Gender

	NYC		Manhattan		CD 2	
	N	%	N	%	N	%
Male	2,547	78.1%	384	79.3%	0	#DIV/0!
Female	716	21.9%	100	20.7%	0	#DIV/0!
(blank)	0	0.0%	0	0.0%	0	#DIV/0!

Detention Admissions by Race/Ethnicity

	NYC		Manhattan		CD 2	
	N	%	N	%	N	%
Black	2,112	64.7%	275	56.8%	0	#DIV/0!
Hispanic	964	29.5%	193	39.9%	0	#DIV/0!
White	82	2.5%	2	0.4%	0	#DIV/0!
Asian	21	0.6%	2	0.4%	0	#DIV/0!
Other	5	0.2%	0	0.0%	0	#DIV/0!
Unknown	79	2.4%	12	2.5%	0	#DIV/0!

CD 2: Detention Admissions by Race/Ethnicity



Data Sources and Technical Notes

Demographics

Source: 2010 population figures are based on U. S. Bureau of the Census data.

Abuse and Neglect

Source: CONNECTIONS

Notes:

Number of Abuse/Neglect Investigations is the total number of abuse/neglect investigations conducted by ACS in CY 2011. This count excludes reports which have been consolidated into one investigation according to criteria established by the New York State Office of Children and Family Services.

Abuse/Neglect Indication rate is the percent of reports that have credible evidence of abuse or neglect determined upon investigation.

Victimization Rate is the number of distinct children 17 and under with indicated reports divided by the number of children 17 and under in the population (NYC/Borough/CD) multiplied by 1,000.

Individual cases of abuse/neglect frequently include several allegations of child maltreatment. Therefore, the total number of allegations will exceed the total number of their respective cases.

Repeat Indicated Investigations in Six Months is the percent of cases with indicated investigations closed during 2010 which were followed by another indicated investigation within six months. A case is said to have an indicated repeat investigation if any one of the children, including children with no role, had an indicated repeat investigation within six months of the close of the initial investigation.

Foster Care Population

Source: CCRS/WMS and CONNECTIONS

Notes:

The data represent children in care at a point in time in April 2012.

Kinship Placement is placement provided by a relative up to the third degree.

Foster Care Stay

Source: CCRS/WMS

Notes:

Children with One or More Transfers During Current Foster Care Stay is based on the number of children in care at least a day during CY 2011.

Placements

Source: CCRS/WMS and CONNECTIONS

Notes:

Placement information is based on admissions to foster care in CY 2011.

Placement Rate is the number of children 17 years of age and under placed into foster care divided by the number of children 17 and under in the population (NYC/Borough/CD) multiplied by 1,000.

Community Placement is the percentage of children who were placed in their community district of origin or a neighboring community district.

Adolescents Placed in Family Settings is the percent of youth 12 or older placed in kinship or non relative foster boarding homes.

The Percent Sibling Groups Placed Together is the percent of all placements involving children in sibling groups who were placed in family foster care (relative or non-relative) on the same day with no other siblings already in care where all siblings were placed in the same home.

Kinship Placement is placement provided by a relative up to the third degree.

Data Sources and Technical Notes

Additional Outcomes

Source: CCRS/WMS

Notes:

Discharge information is based on children discharged from foster care in CY 2011.

Percent Reunified within 1 Year of Placement is based on children admitted to foster care in CY 2010.

The Re-entry Rate is the percent of children discharged from foster care to families in 2010 who re-enter foster care within one year of their discharge date.

Child Care

Source: ACS Division of Child Care and Head Start

Notes:

Head Start data reflect February 2012 enrollment.

Child Care data reflect enrollment in group day care programs contracting with ACS for February 2012. Children receiving services using ACS vouchers are not included in these figures.

Preventive Services

Source: PROMIS

Notes:

The 'Other Referral Sources' category includes Department of Homeless Services, Juvenile Justice Initiative, Foster Care Agency, Hospital/Medical Facility, NYC Housing Authority, Police, Probation, and School.

Youth and Family Justice

Source: CJIS

Detention admissions are unique youth admitted during the year. If a youth was admitted more than once during the year, she or her was only counted once.