

HUMAN HEALTH

ENVIRONMENTAL HEALTH



BE CONFIDENT.  
BE INFORMED.  
TAKE CONTROL.

**LABWORKS**

Laboratory Information Management System







IT ISN'T ABOUT DATA  
MANAGEMENT.  
IT'S ABOUT  
RESULTS.





# BE CONFIDENT.

PerkinElmer has been delivering Laboratory Solutions across industries for over 70 years. As one of the original suppliers of commercial Laboratory Information Management Systems (LIMS), we understand the important role that LIMS play in getting the right data, to the right people, to make the right decisions.

## IT'S ABOUT UNDERSTANDING YOUR WORLD.

PerkinElmer understands that a successful LIMS implementation requires a team of subject matter experts who understand the business dynamics of your industry, the information infrastructure of your site and the operational workflow of your analytical laboratory. Our product and service portfolio and history demonstrate a depth of experience that few providers can match. As a Six Sigma company, PerkinElmer also understands how to analyze your workflows and look for opportunities to improve them.

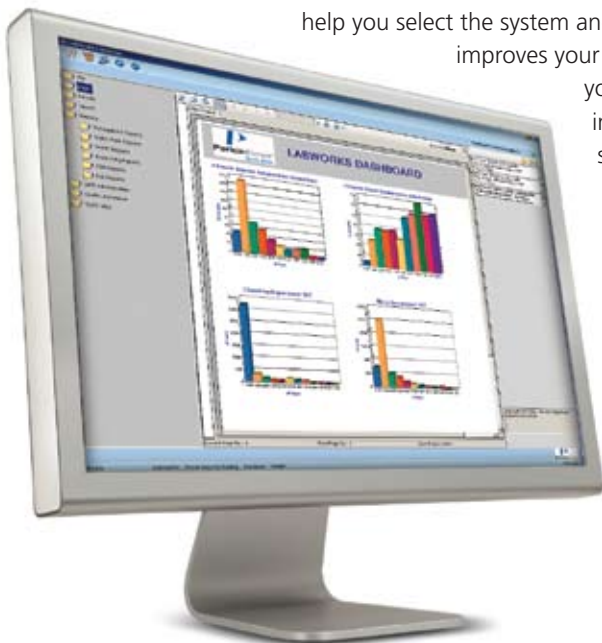


## IT'S ABOUT GROWING WITH YOUR LABORATORY.

Commitment to customers is a core PerkinElmer value, and one that we demonstrate in every step of the LABWORKS™ lifecycle. Our flexible, feature-rich LIMS is designed to grow as your laboratory's needs expand and change. The platform is based on configuration and integration tools that fine-tune the system to your terminology and processes. All site-specific settings are easily migrated as we continue to improve our product and platform, so that LABWORKS customers can benefit from new software releases. Our history of ensuring upgrade compatibility is unmatched for commercial LIMS, and is just one way that PerkinElmer protects your LIMS investment.

## IT'S ABOUT YOUR FINANCIAL PERFORMANCE.

PerkinElmer also understands what it takes to show return on a LIMS investment, and we can help you select the system and services you need to deliver a solution that measurably improves your laboratory operations. We will help you calculate your potential return from cost savings and productivity improvement, both within the lab and the enterprise it serves. And you will see that return faster – our focus on clear goal definition and process mapping translate to implementations that outpace the industry standard.



# BE INFORMED.



## SEE YOUR DATA LIKE NEVER BEFORE.

It is difficult to control what you cannot see or measure. With LABWORKS, you have the structures and tools to collect, analyze and report on your processes and products. High-level throughput and backlog reports, schedules and operational summaries are built into LABWORKS. In addition, LABWORKS supports drill-down analysis that provides highly detailed information about samples and their tests, with simple access to performance history, comments, special information and documents.

### Local Language Support

LABWORKS makes information available throughout the enterprise. With the multi-language interface, users can instantly select their local language and database of choice at the point of login. For even greater flexibility, users within a networked installation can each run different languages, including English, French, German, Italian, Russian and Spanish. New languages and translations are easily added.

## CONTROL YOUR TECHNOLOGY WITH NEW EASE.

As a full-spectrum laboratory solution provider, PerkinElmer understands the importance of connecting all the systems that contribute to a workflow. With LABWORKS, establishing meaningful dialogue with your instrument systems is fundamental.

### Seamless Integration with Third-Party Systems

When data must be manually recorded and reviewed, or where laboratory systems are not integrated with manufacturing systems, the data latency associated with communicating those results can be costly. LABWORKS is designed to exchange information with a variety of process and ERP systems to improve operational efficiencies. LABWORKS implementations have included successful integration of SAP® R/3®, AspenTech™, PI Oil Systems, and J.D. Edwards™.

“...we own a number of PerkinElmer instruments and we were impressed by how easy it was to connect them to the LIMS...”

- Quality Assurance Manager,  
Ajinomoto (Malaysia) Berhad

## MAKE DECISIONS WITH NEW CLARITY.

### Real-time Notifications and Alerts

Rapid response can't occur without real-time notification of problems. LABWORKS provides the mechanism to issue alerts when a situation requires attention. When test results indicate that a process or product does not conform to expected guidelines, notices can be sent automatically to email and phones. Special monitors provide up-to-the-minute feedback on sample status in production environments. Need to make decisions from a remote location? Our zero-footprint Web client provides access to your LIMS so that you can review and act on current information.

### Triggered Events

Whether expected or by exception, LABWORKS can handle scheduling and reporting actions based on events in the sample lifecycle. From adding confirmatory tests to dynamic update of control limits, LABWORKS is designed to automate workflows that match your operating procedures.

### Metrics and Reporting

Delivering information to data consumers is an important LIMS benefit in every industry. Whether your customers are looking for specific analytical results, status updates, operational summaries, or current performance indicators, providing up to date and accurate details is a LABWORKS specialty. Our Report Designer software simplifies the creation of report templates so that adding new formats are never a problem. And our Object Publisher lets you manage the templates to control the active version and distribution.



## Why should you consider LABWORKS LIMS?

- Because it doesn't matter how accurate the results are if the sample is not properly identified
- Because it doesn't matter how sensitive the instrument is if it isn't available
- Because it doesn't matter how fast the instrument is if you cannot find, use and communicate the results
- Because it doesn't matter how good the product is if you didn't meet the customer's deadline

## TAKE CONTROL.

LABWORKS LIMS manages more than data. It manages time, resources and risk. It improves visibility both inside and outside the laboratory, using our zero-footprint WebTop to keep the people and systems that collect, analyze and use laboratory information connected.

Identifying and controlling risk during processing, combined with final product inspections, are key components of quality management systems. But creating and maintaining records that demonstrate control can be time-consuming and expensive. LABWORKS provides a secure environment that lets you capture critical information from inspection of incoming materials through final product testing, so that you can be confident that released products are safe and effective.



### OUR CUSTOMERS ATTEST:

"We are saving significant amounts of time at every stage of the quality control process. Data entry is much faster than with the old system because we have set up spreadsheets that match the way that the data comes off the instruments. This has been a key factor in our ability to handle a 20% increase in samples to about 70,000 per year without having to add any staff members. At the same time, the reduction in the amount of data entry and the automation of calculations have substantially improved the accuracy of our data."

- *Technical Service Chemist, Ergon Refining*

"LABWORKS can handle a lot of the unique things we do. The more we work with it, we see how powerful it is. Data is so much easier to retrieve... and the customized reports are ideal for us."

- *Chemist, Westlake Chemical*

"Since we implemented the new software, the productivity of our technicians has been increased by 25% and our documentation has been error-free."

- *Quality Assurance Manager, Ajinomoto (Malaysia) Berhad*



# OUR FOCUS: YOUR INDUSTRY.



## ENVIRONMENTAL & WATER QUALITY

- Scheduling module simplifies and coordinates complex sampling programs
- Manage field, preparatory and analytical information with full traceability and flexible reporting
- Save time and minimize errors with instrument interfaces



## FOOD & BEVERAGE

- Identify and control risk by automatically flagging and escalating suspect values
- Sampling and evaluation criteria incorporate seasonal and regional variations
- Supports supplier performance tracking and traceability
- Manages sampling for shelf life studies



## HYDROCARBON PROCESSING & BIOFUELS

- Integrate with enterprise systems for real-time notification and response
- Automate the evaluation of product and creation of Certificate of Analysis reports
- Combine data for different units across the refinery and plot real-time trends



## MANUFACTURING & PRODUCT QUALITY

- Connect to plant information or materials management systems for coordinated sampling and reporting of required quality parameters
- Automatic evaluation of sample results against multiple product specifications drives non-conformance activities and notifications
- Controlled environment features auditing and electronic signature to document adherence to standard operating procedures



## AGRICULTURE

- Automate manual tasks for improved productivity and accuracy
- Save time with custom reports and electronic filing (like those for the USDA's pesticide program)
- Instrument interfacing without customization or programming





# YOUR INDUSTRY. YOUR NEEDS. YOUR UNIQUE LABWORKS SOLUTION.

PerkinElmer: Exceeding expectations for over 70 years. PerkinElmer has a dedicated team of experts to support your industry. We help laboratories around the world navigate compliance standards; we design laboratories from the ground up; and we provide applications support, training and maintenance management.

PerkinElmer is ideally suited to equip your laboratory with all of the high-technology analytical tools that you need to produce an end product that is method-compliant

and consistently high in quality. The instrumentation that PerkinElmer provides is specifically designed and manufactured to meet the stringent and specific needs of a variety of different industries. All of our analytical solutions have proven their effectiveness and reliability in laboratories around the world.

These products come to your laboratory complete with installation, warranty and user training that are tailored to your needs. More than 1,500 factory-trained service engineers ensure that this instrumentation will be functioning at full capacity in your laboratory, wherever it is located.

PerkinElmer, Inc.  
940 Winter Street  
Waltham, MA 02451 USA  
P: (800) 762-4000 or  
(+1) 203-925-4602  
[www.perkinelmer.com](http://www.perkinelmer.com)



For a complete listing of our global offices, visit [www.perkinelmer.com/ContactUs](http://www.perkinelmer.com/ContactUs)

Copyright ©2010, PerkinElmer, Inc. All rights reserved. PerkinElmer® is a registered trademark of PerkinElmer, Inc. All other trademarks are the property of their respective owners.