

Keep-a-Cube

What You Need

- 2 ice cubes
- cardboard box
- wax paper
- masking tape
- newspaper
- aluminum foil
- rubber bands
- paper plate



Engineering Scoop

Engineers design ways to **solve problems**. In this activity you designed a way to keep an ice cube from **melting** in 30 minutes. What makes ice melt? **Heat!** The air around the ice cube is **warmer** than the ice. So you need to **keep the warm air away** from the ice cube. To do this, you use **insulation**, a material that slows heat energy from passing through it. When we tried this on ZOOM, Caroline and Frances **wrapped their ice cube** in wax paper and **sealed the box** to keep warm air out. Eric and Rachel **covered their box** with aluminum foil to keep the warm air out. How did **you** keep your ice cube from melting?

Can you keep an ice cube from completely melting in 30 minutes?

- 1 Use the materials to make a **Keep-a-Cube box** that will keep an ice cube from **melting**. Think about what makes ice melt as you design your box. You can wrap up the ice cube, cover the box, or do anything else you can think of.
- 2 **Put** a second ice cube on a **plate**. This is your **“control”** cube. Don't make any changes to this ice cube.
- 3 **Wait** 30 minutes.
- 4 **Compare** the ice cube in your Keep-a-Cube box to the ice cube on the plate. Which ice cube is **bigger?** Why?

Sent in by Becky R. of Greenfield, WI, and Billy M. of Reno, NV



How can you **change** the container so the ice cube melts more slowly? What happens if you use a **smaller box?** Or, what happens if you use **different materials**, like foam packing peanuts or cotton balls? Choose one thing to change (that's the **variable**), and make a **prediction**. Then **test it** and **send** your results to ZOOM.



ZOOM INTO ENGINEERING is a partnership of WGBH and National Engineers Week. National Engineers Week 2002 chairs: DuPont and the American Society of Civil Engineers. ZOOM is produced by WGBH Boston. Funding for ZOOM is provided by the National Science Foundation, the Corporation for Public Broadcasting, the Arthur Vining Davis Foundations, and public television viewers. Any opinions, findings, and conclusions or recommendations expressed in this material are those of the author(s) and do not necessarily reflect the views of the National Science Foundation.

TM / © 2002 WGBH Educational Foundation

pbskids.org/zoom



KIDS

Keep-a-Cube

Engineer's Notebook

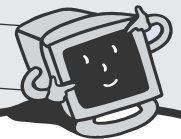
My Prediction



Engineers Wanted!

Have you ever been in a room that's too hot or too cold? Imagine if you could control the temperature so that it's just right for you. Engineers are designing homes for the future called "**smart**" houses. When you enter a room, sensors will detect who you are. Then a computer will make the room temperature warmer or colder, depending on what you like. Engineers like **you** could design new kinds of "smart" houses.

What Happened



Send It to ZOOM™!
Tell us about your results at
pbskids.org/zoom/sendit