



*Weekly Nanos Party Power Index Tracking
(period ending February 13th, 2015)
released February 18th, 2015*

Weekly Nanos Party Power Index



Liberals score 57 points out of 100, Tories 54 points, NDP 48 points on Nanos Party Power Index, Tories hit new 12 month high on index
(Released 02/18/2015)

Although their score is still lower than the Liberals, the Conservatives have hit a new 12 month high. The Conservative score on the index was last at this level in October 2013 prior to the Senate controversy. Overall the Liberals registered 57 points out of 100 on the Nanos Party Power Index followed by the Tories with 54 points, the NDP with 48 points, the Green Party with 30 points and the BQ at 26 points (QC only) respectively.

The Nanos Party Power Index methodology is comprised of a basket of political goods that includes ballot preferences, accessible voters, preferred PM views and evaluations of the leaders. It is modeled similar to a standard confidence index. It is a random telephone survey conducted with live agents, reaching out to Canadians through a land- and cell-line dual frame sample.

The preferred Prime Minister measure remains very tight with Harper the preference of 33 per cent of Canadians followed by Trudeau at 31 per cent, Mulcair at 16 per cent, four per prefer May and 14 per cent were unsure.

When one gauges the pool of accessible voters for each of the parties through a series of independent questions, 53 per cent would consider voting for the federal Liberals, 45 per cent would consider voting for the NDP, 45 per cent would consider voting for the Conservatives and 27 per cent would consider voting for the Green Party.

Party Power Index



The Nanos Party Power Index Tracking for Canada is based on a composite of the following public opinion measures: the national ballot, which party individuals would consider voting for, the top two choices for Prime Minister, and whether each party leader has good leadership qualities.

Contact: Nik Nanos
Ottawa: (613) 234-4666 x 237
Washington DC: (202) 697-9924
nnanos@nanosresearch.com

Data Summary

	This Week	Last Week	4 Weeks Ago	3 Months Ago	1 Year Ago (Feb 2014)	12 Month High	12 Month Low	12 Month Average
Canada Party Power Index								
Liberal	56.9	57.4	56.9	55.5	56.0	60.7	54.8	56.9
Conservative	53.5	53.3	50.8	52.8	50.0	53.5	48.4	51.1
NDP	48.2	48.7	49.2	50.5	49.8	52.2	47.4	49.3
Green	30.1	31.1	32.0	31.3	32.0	35.2	30.1	32.2
Bloc	26.3	25.1	26.5	26.8	25.2	29.0	22.9	26.7
Party Consider								
Liberal	53.0%	53.7%	58.1%	54.6%	47.2%	59.7%	47.2%	54.0%
NDP	44.6%	45.3%	46.3%	44.4%	41.4%	47.1%	37.9%	43.4%
Conservative	44.5%	44.3%	42.7%	42.0%	37.0%	44.7%	36.1%	40.8%
Bloc	32.9%	31.5%	29.2%	34.6%	34.6%	35.2%	22.4%	30.3%
Green	26.6%	29.0%	29.2%	26.6%	27.5%	33.1%	22.7%	27.6%
Preferred Prime Minister								
Harper	32.5%	32.4%	31.1%	31.8%	27.8%	33.4%	25.2%	29.7%
Trudeau	31.4%	31.1%	30.7%	29.4%	29.5%	35.8%	26.3%	30.7%
Mulcair	16.3%	17.0%	17.8%	20.4%	18.6%	20.4%	13.7%	18.0%
May	3.8%	3.4%	4.7%	3.4%	4.0%	6.7%	3.0%	4.9%
Beaulieu	1.6%	1.1%	1.2%	0.8%	1.4%	2.8%	0.5%	1.4%
Unsure	14.4%	15.1%	14.4%	14.2%	18.7%	18.7%	11.7%	15.0%

About the Index



Weekly Nanos Party Power Index

Since voters are not actually able to make a choice between elections, it is interesting to think about party strength and support more broadly. The Nanos Party Power Index fills this need by incorporating more information than just current vote preference.

The Nanos Party Power Index is a weekly composite measurement of federal party brands based on four questions about the federal parties and their leadership. The questions include:

- a ballot question that captures the 1st and 2nd vote preferences;
- a measure of whether the respondent would consider voting for the party;
- the 1st and 2nd preferences for Prime Minister of the current federal leaders; and,
- whether the respondent believes each current leader has the quality to be a good leader.

The views of 1,000 respondents are compiled into a diffusion brand index for each party that goes from 0 to 100, where 0 means that the party has no brand strength and 100 means it has maximum brand strength. A score above 50 is an indication of brand strength for the party and its leader at this time.

The important factors in this weekly tracking include the direction of the brand strength or weakness and also the brand strength of one federal party relative to another.

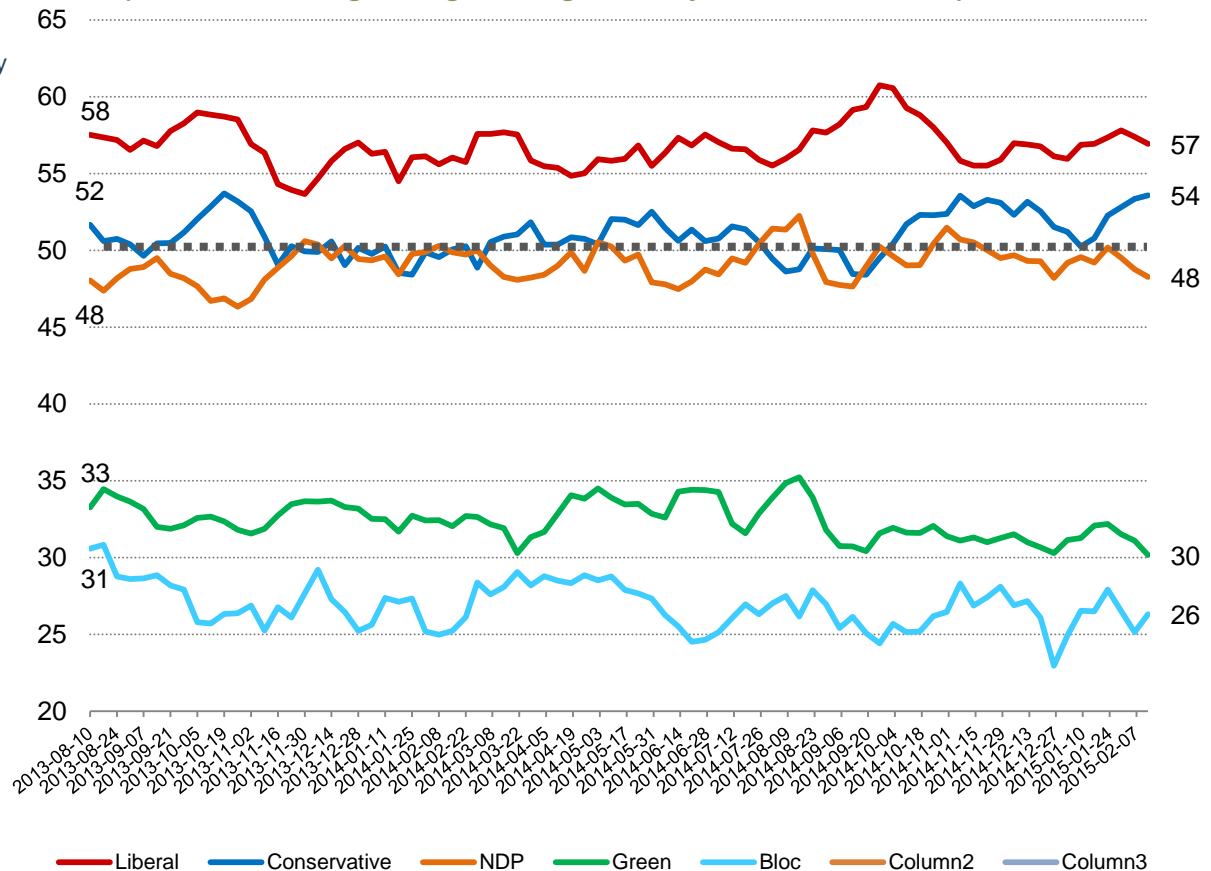
Party Power Index



The Nanos Party Power Index Tracking for Canada is based on a composite of the following public opinion measures: the national ballot, which party individuals would consider voting for, the top two choices for Prime Minister, and whether each party leader has good leadership qualities.

Contact: Nik Nanos
Ottawa: (613) 234-4666 x 237
Washington DC: (202) 697-9924
nnanos@nanosresearch.com

Canada Weekly Index Tracking Scores
(Four week rolling average ending February 13th, 2015, n=1,000)





Party Power Index Tracking by Region

Party Power Index



The Nanos Party Power Index Tracking for the Atlantic is based on a composite of the following public opinion measures: the national ballot, which party individuals would consider voting for, the top two choices for Prime Minister, and whether each party leader has good leadership qualities. There are wider margins of accuracy for regional subsamples.

Contact: Nik Nanos

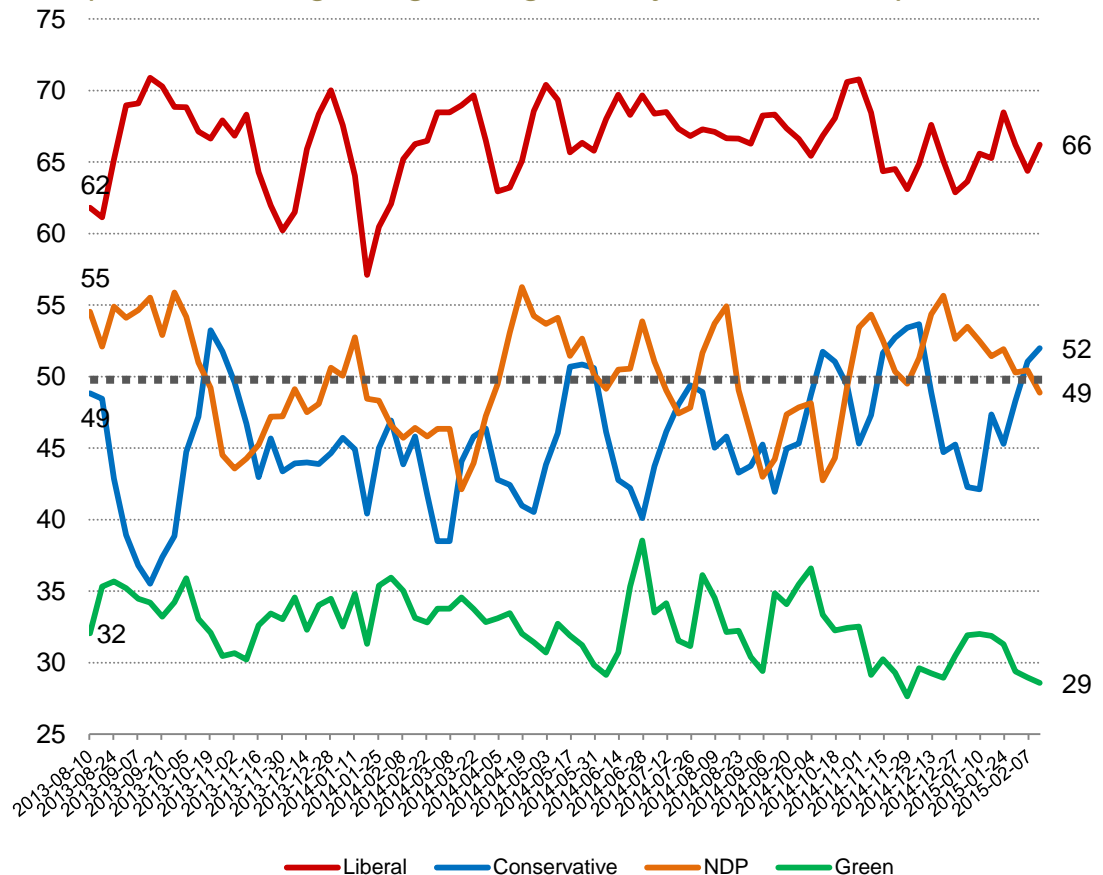
Ottawa: (613) 234-4666 x 237

Washington DC: (202) 697-9924

nnanos@nanosresearch.com

Atlantic Weekly Index Tracking Scores

(Four week rolling average ending February 13th, 2015, n=100)



Party Power Index



The Nanos Party Power Index Tracking for Quebec is based on a composite of the following public opinion measures: the national ballot, which party individuals would consider voting for, the top two choices for Prime Minister, and whether each party leader has good leadership qualities. There are wider margins of accuracy for regional subsamples.

Contact: Nik Nanos

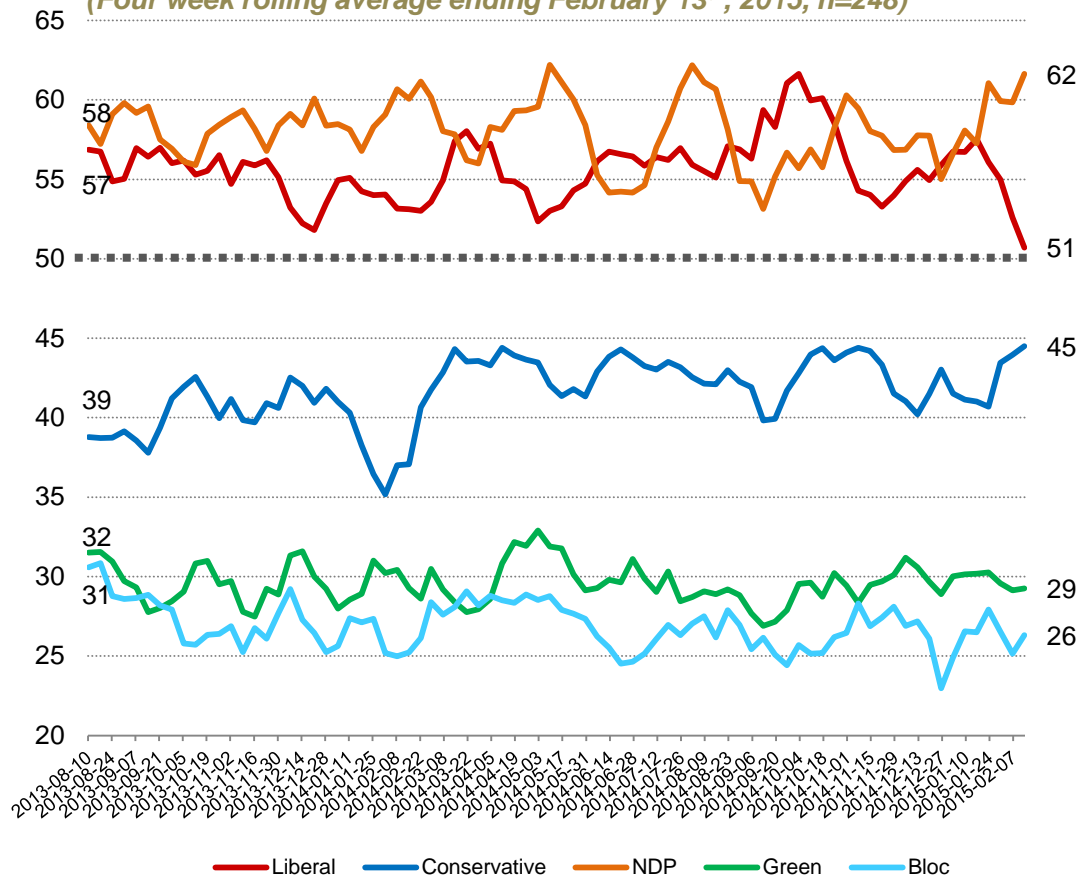
Ottawa: (613) 234-4666 x 237

Washington DC: (202) 697-9924

nnanos@nanosresearch.com

Quebec Weekly Index Tracking Scores

(Four week rolling average ending February 13th, 2015, n=248)



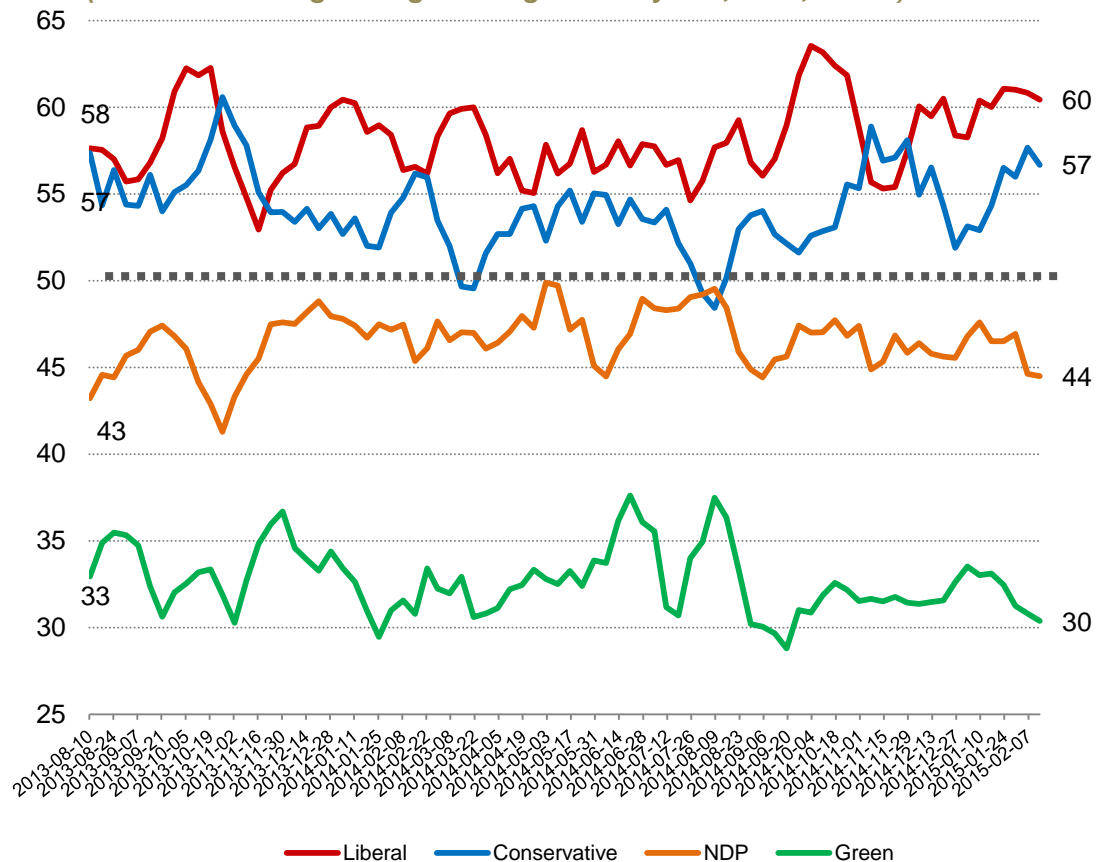
Party Power Index



The Nanos Party Power Index Tracking for Ontario is based on a composite of the following public opinion measures: the national ballot, which party individuals would consider voting for, the top two choices for Prime Minister, and whether each party leader has good leadership qualities. There are wider margins of accuracy for regional subsamples.

Contact: Nik Nanos
Ottawa: (613) 234-4666 x 237
Washington DC: (202) 697-9924
nnanos@nanosresearch.com

Ontario Weekly Index Tracking Scores
(Four week rolling average ending February 13th, 2015, n=300)



Party Power Index

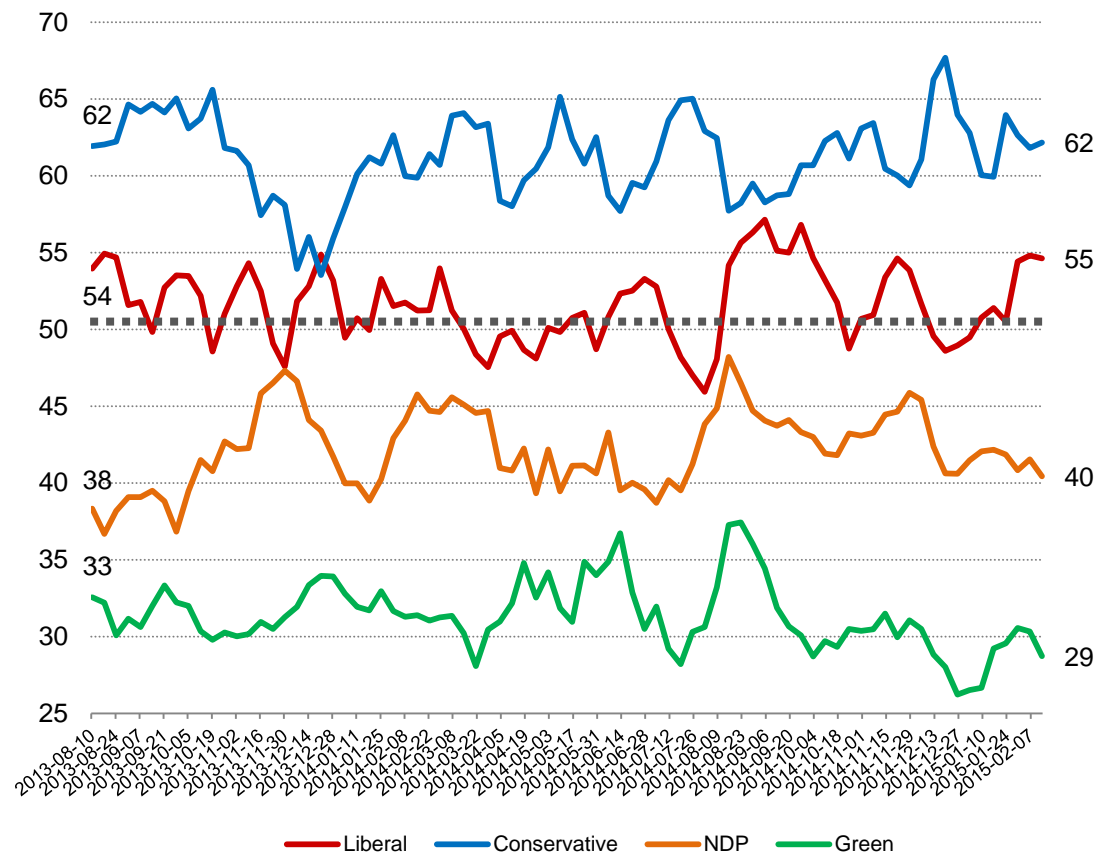


The Nanos Party Power Index Tracking for the Prairies is based on a composite of the following public opinion measures: the national ballot, which party individuals would consider voting for, the top two choices for Prime Minister, and whether each party leader has good leadership qualities. There are wider margins of accuracy for regional subsamples.

Contact: Nik Nanos
Ottawa: (613) 234-4666 x 237
Washington DC: (202) 697-9924
nnanos@nanosresearch.com

Prairies Weekly Index Tracking Scores

(Four week rolling average ending February 13th, 2015, n=200)



Party Power Index



The Nanos Party Power Index Tracking for BC is based on a composite of the following public opinion measures: the national ballot, which party individuals would consider voting for, the top two choices for Prime Minister, and whether each party leader has good leadership qualities. There are wider margins of accuracy for regional subsamples.

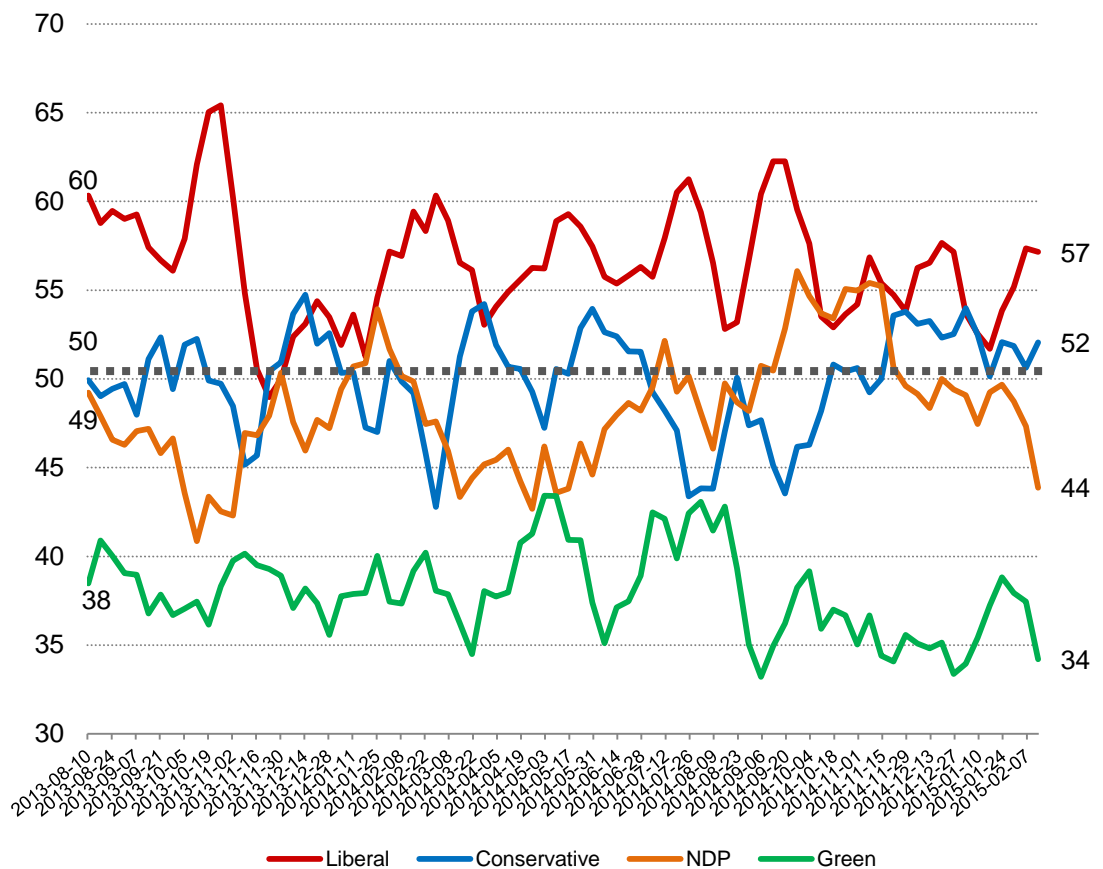
Contact: Nik Nanos

Ottawa: (613) 234-4666 x 237

Washington DC: (202) 697-9924

nnanos@nanosresearch.com

British Columbia Weekly Index Tracking Scores (Four week rolling average ending February 13th, 2015, n=152)





Party Power Index Tracking by Age

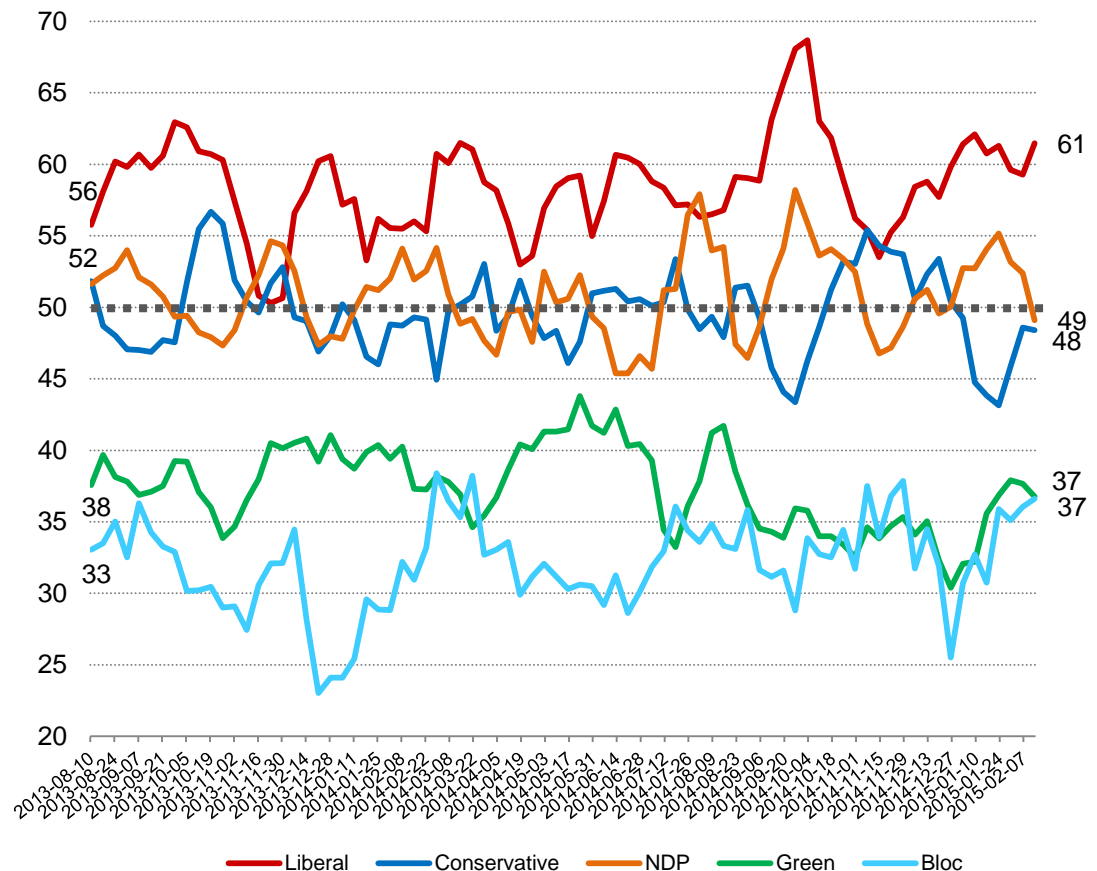
Party Power Index



The Nanos Party Power Index Tracking for the 18 to 29 age group is based on a composite of the following public opinion measures: the national ballot, which party individuals would consider voting for, the top two choices for Prime Minister, and whether each party leader has good leadership qualities. There are wider margins of accuracy for age subsamples.

Contact: Nik Nanos
Ottawa: (613) 234-4666 x 237
Washington DC: (202) 697-9924
nnanos@nanosresearch.com

18 to 29 Weekly Index Tracking Scores
(Four week rolling average ending February 13th, 2015, n=205)



Party Power Index



The Nanos Party Power Index Tracking for the 30 to 39 age group is based on a composite of the following public opinion measures: the national ballot, which party individuals would consider voting for, the top two choices for Prime Minister, and whether each party leader has good leadership qualities. There are wider margins of accuracy for age subsamples.

Contact: Nik Nanos

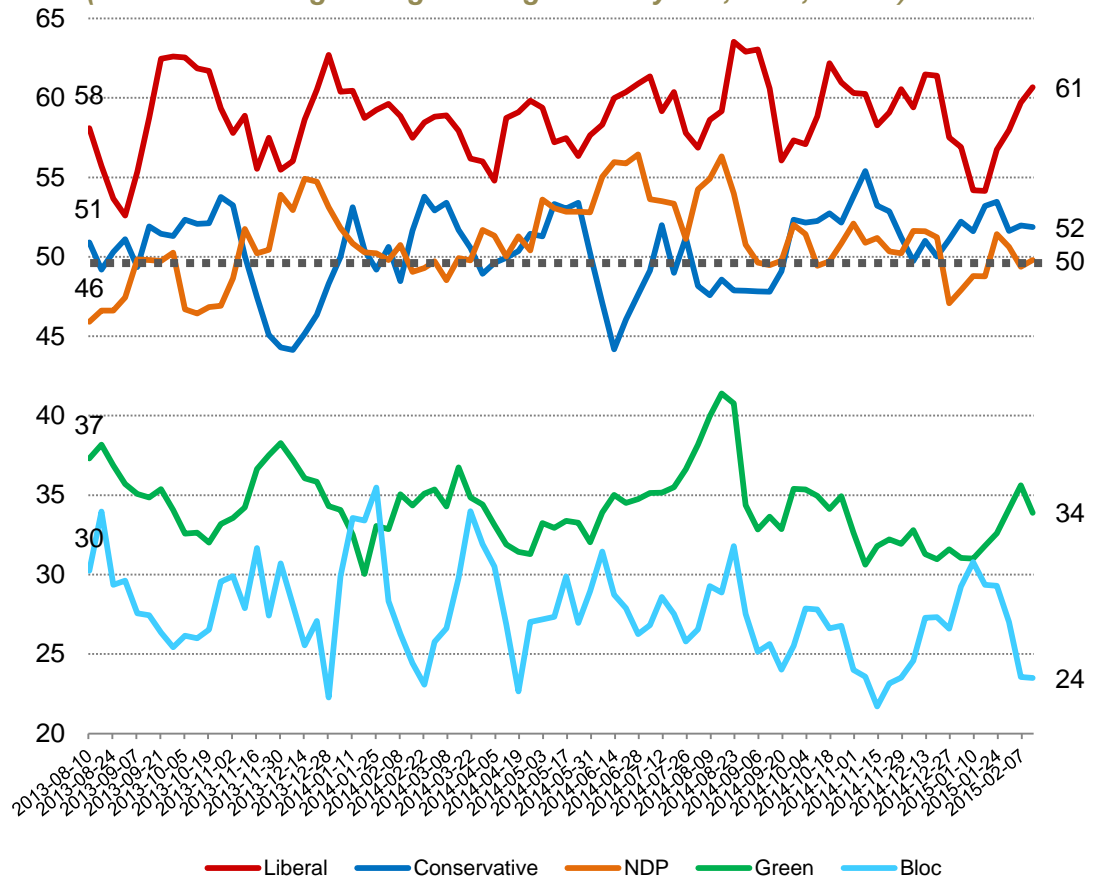
Ottawa: (613) 234-4666 x 237

Washington DC: (202) 697-9924

nnanos@nanosresearch.com

30 to 39 Weekly Index Tracking Scores

(Four week rolling average ending February 13th, 2015, n=169)



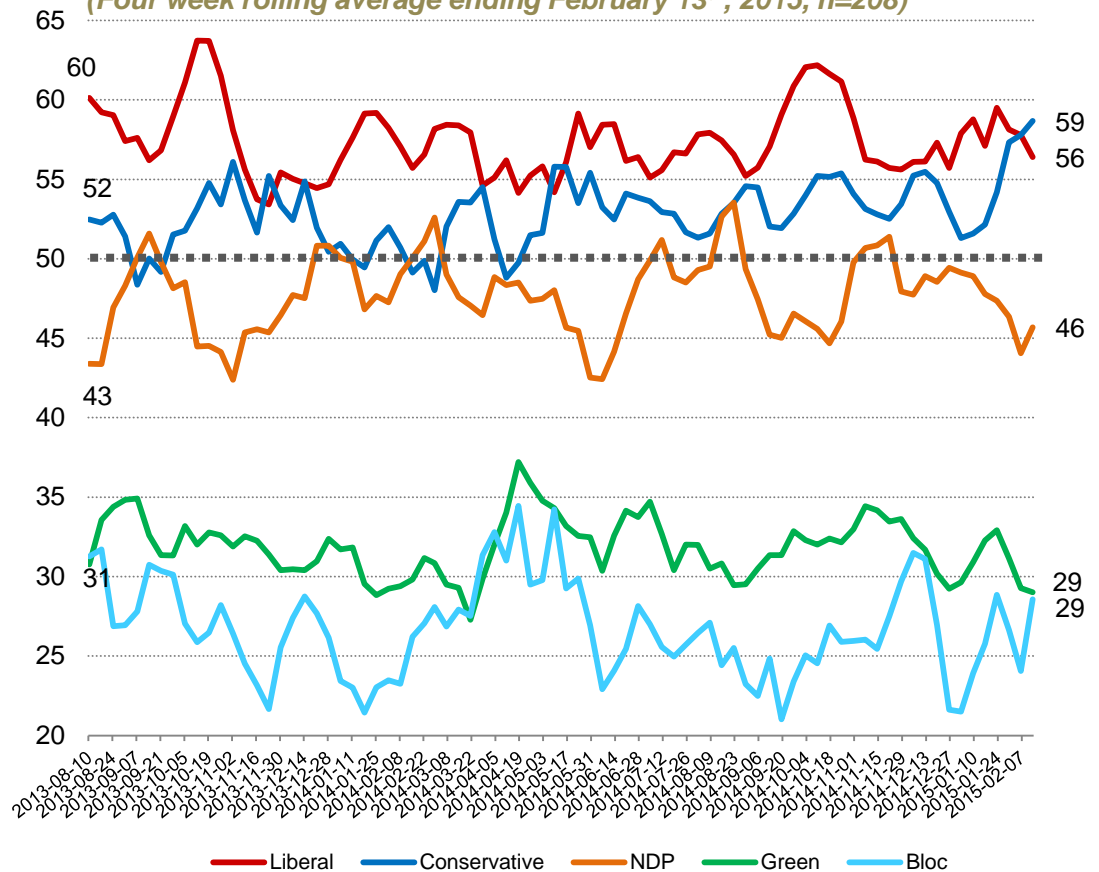
Party Power Index



The Nanos Party Power Index Tracking for the 40 to 49 age group is based on a composite of the following public opinion measures: the national ballot, which party individuals would consider voting for, the top two choices for PM, and whether each party leader has good leadership qualities. There are wider margins of accuracy for age subsamples.

Contact: Nik Nanos
Ottawa: (613) 234-4666 x 237
Washington DC: (202) 697-9924
nnanos@nanosresearch.com

40 to 49 Weekly Index Tracking Scores
(Four week rolling average ending February 13th, 2015, n=208)



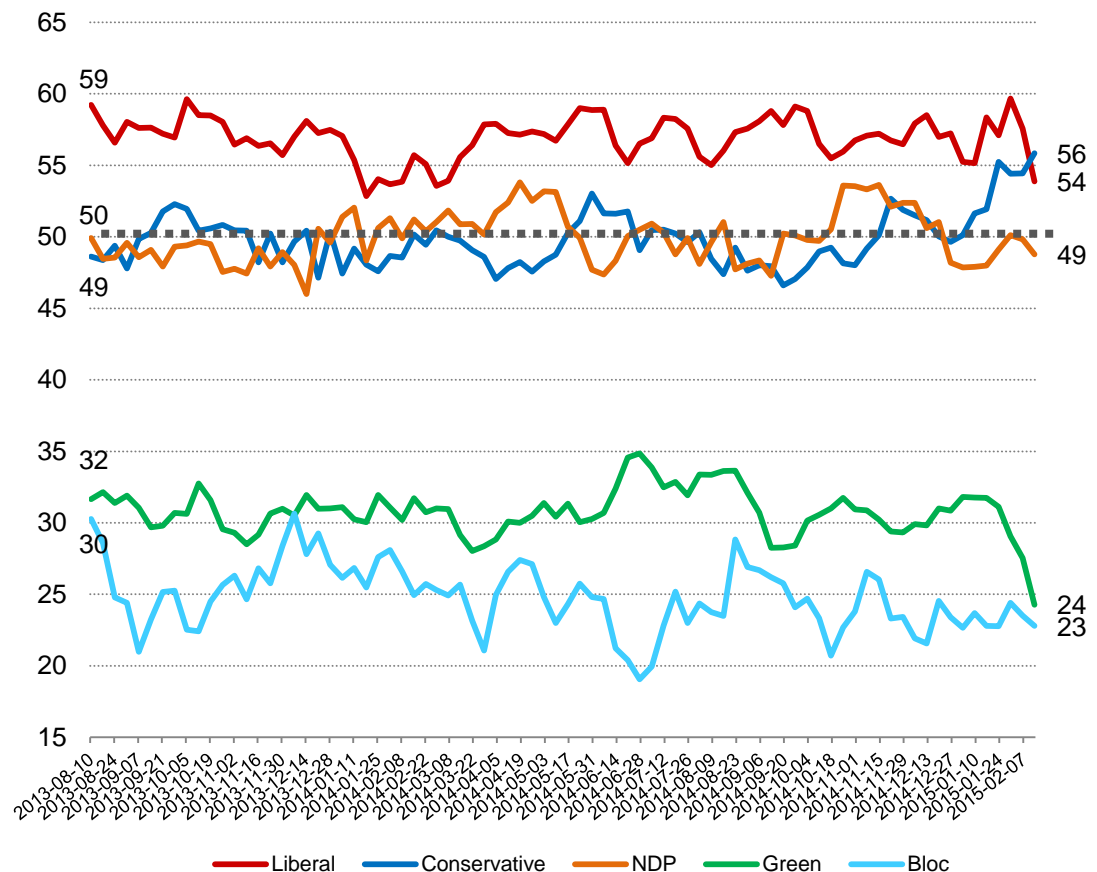
Party Power Index



The Nanos Party Power Index Tracking for the 50 to 59 age group is based on a composite of the following public opinion measures: the national ballot, which party individuals would consider voting for, the top two choices for Prime Minister, and whether each party leader has good leadership qualities. There are wider margins of accuracy for age subsamples.

Contact: Nik Nanos
Ottawa: (613) 234-4666 x 237
Washington DC: (202) 697-9924
nnanos@nanosresearch.com

50 to 59 Weekly Index Tracking Scores (Four week rolling average ending February 13th, 2015, n=178)



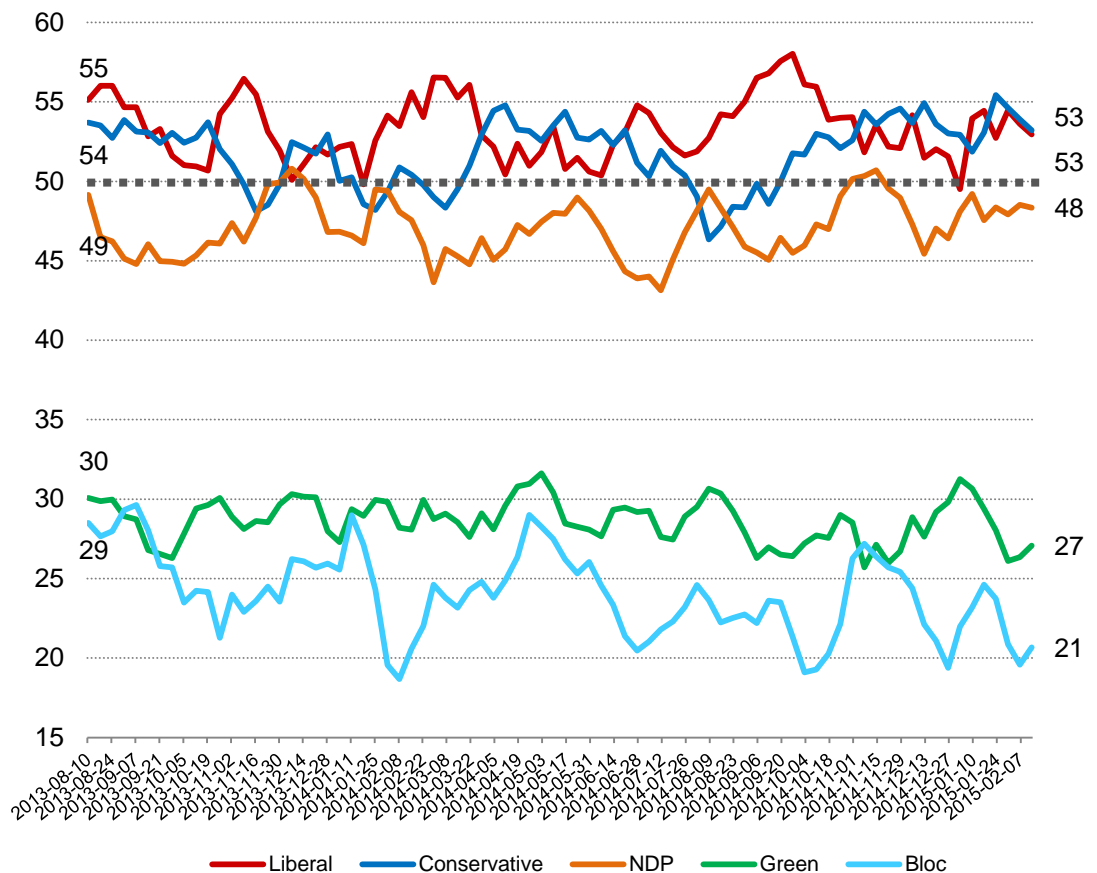
Party Power Index



The Nanos Party Power Index Tracking for the 60 plus age group is based on a composite of the following public opinion measures: the national ballot, which party individuals would consider voting for, the top two choices for Prime Minister, and whether each party leader has good leadership qualities. There are wider margins of accuracy for age subsamples.

Contact: Nik Nanos
Ottawa: (613) 234-4666 x 237
Washington DC: (202) 697-9924
nnanos@nanosresearch.com

60 plus Weekly Index Tracking Scores (Four week rolling average ending February 13th, 2015, n=239)





Party Power Index Tracking by Gender

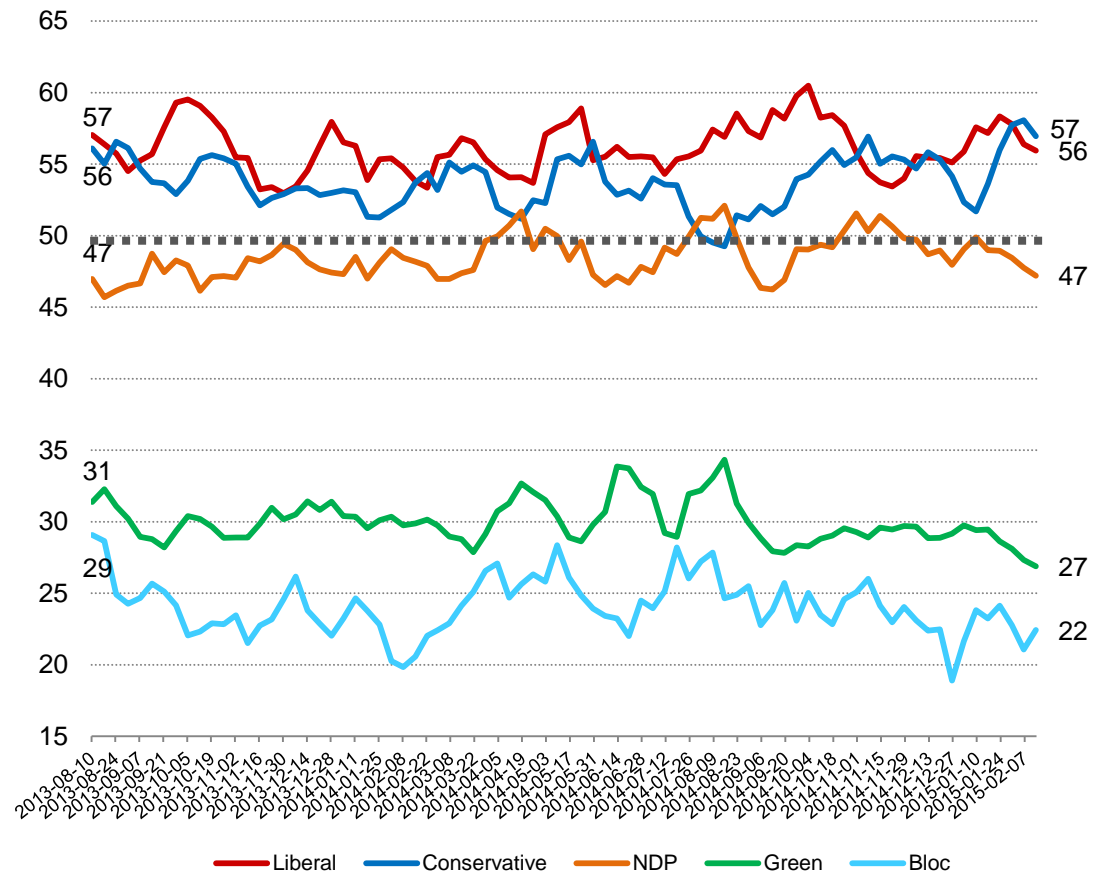
Party Power Index



The Nanos Party Power Index Tracking for males is based on a composite of the following public opinion measures: the national ballot, which party individuals would consider voting for, the top two choices for Prime Minister, and whether each party leader has good leadership qualities. There are wider margins of accuracy for gender subsamples.

Contact: Nik Nanos
Ottawa: (613) 234-4666 x 237
Washington DC: (202) 697-9924
nnanos@nanosresearch.com

Male Weekly Index Tracking Scores
(Four week rolling average ending February 13th, 2015, n=494)



Party Power Index



The Nanos Party Power Index Tracking for females is based on a composite of the following public opinion measures: the national ballot, which party individuals would consider voting for, the top two choices for Prime Minister, and whether each party leader has good leadership qualities. There are wider margins of accuracy for gender subsamples.

Contact: Nik Nanos

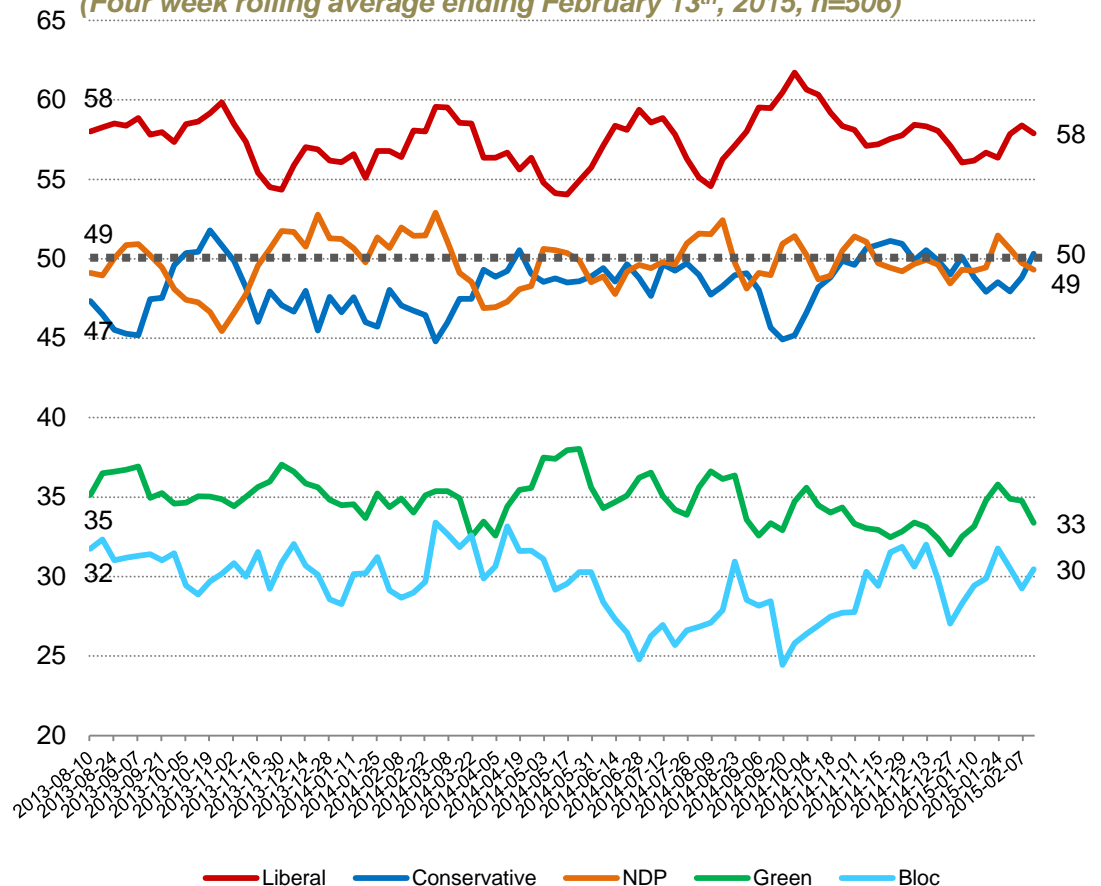
Ottawa: (613) 234-4666 x 237

Washington DC: (202) 697-9924

nnanos@nanosresearch.com

Female Weekly Index Tracking Scores

(Four week rolling average ending February 13th, 2015, n=506)





National Vote Considerations Tracking

Consider Conservative NANOS

Question: For each of the following federal political parties, please tell me if you would consider or not consider voting for it.
[RANDOMIZE] Conservative Party

Contact: Nik Nanos

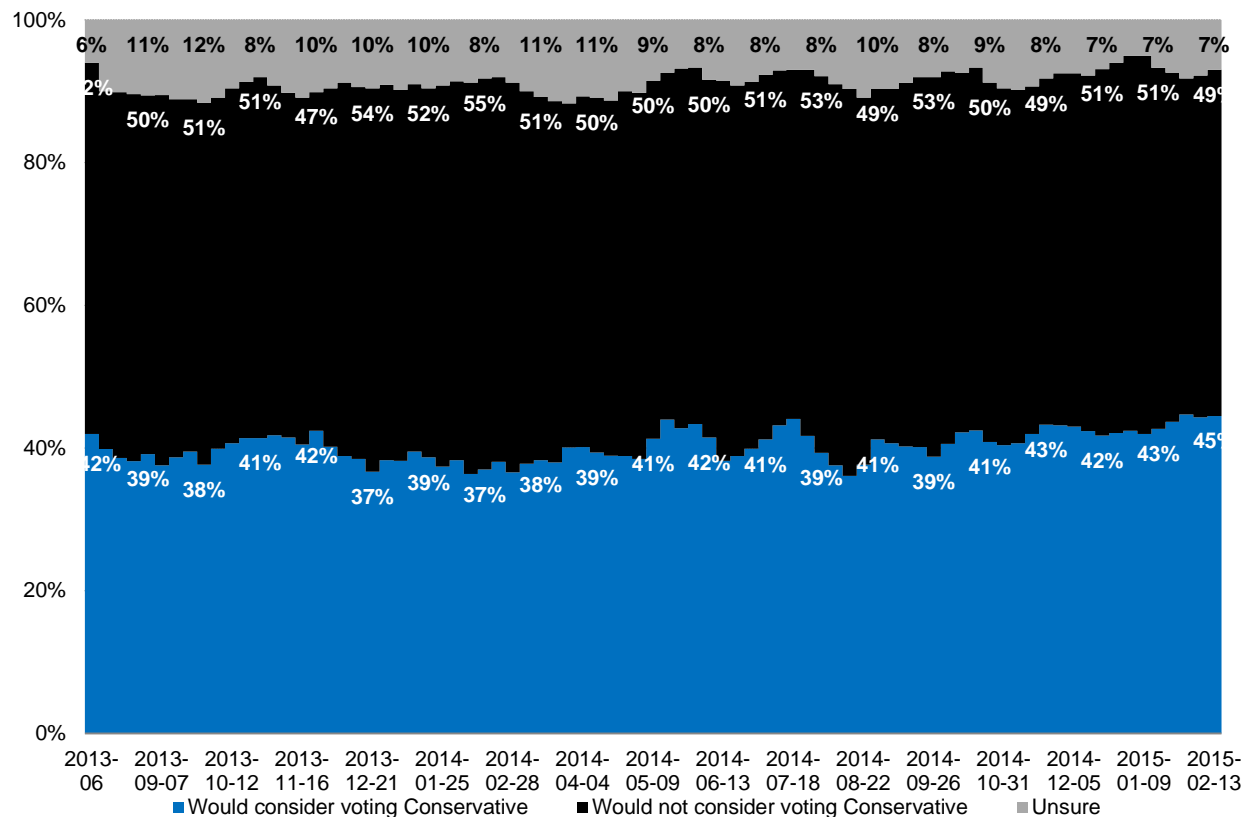
Ottawa: (613) 234-4666 x 237

Washington DC: (202) 697-9924

nnanos@nanosresearch.com

National – Weekly Tracking

(Four week rolling average ending February 13th, 2015, n=1,000)



Consider NDP

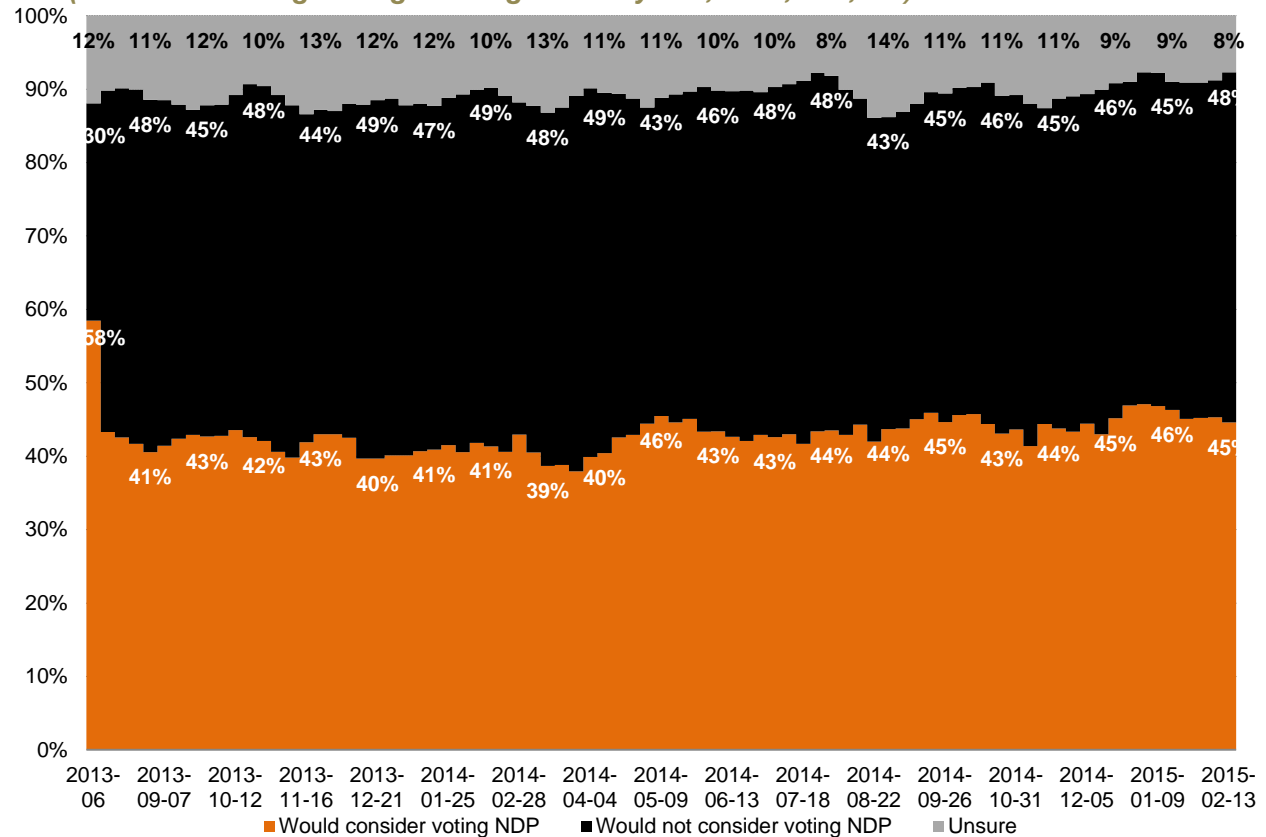


Question: For each of the following federal political parties, please tell me if you would consider or not consider voting for it.
[RANDOMIZE] NDP

Contact: Nik Nanos
Ottawa: (613) 234-4666 x 237
Washington DC: (202) 697-9924
nnanos@nanosresearch.com

National – Weekly Tracking

(Four week rolling average ending February 13th, 2015, n=1,000)



Consider Liberal

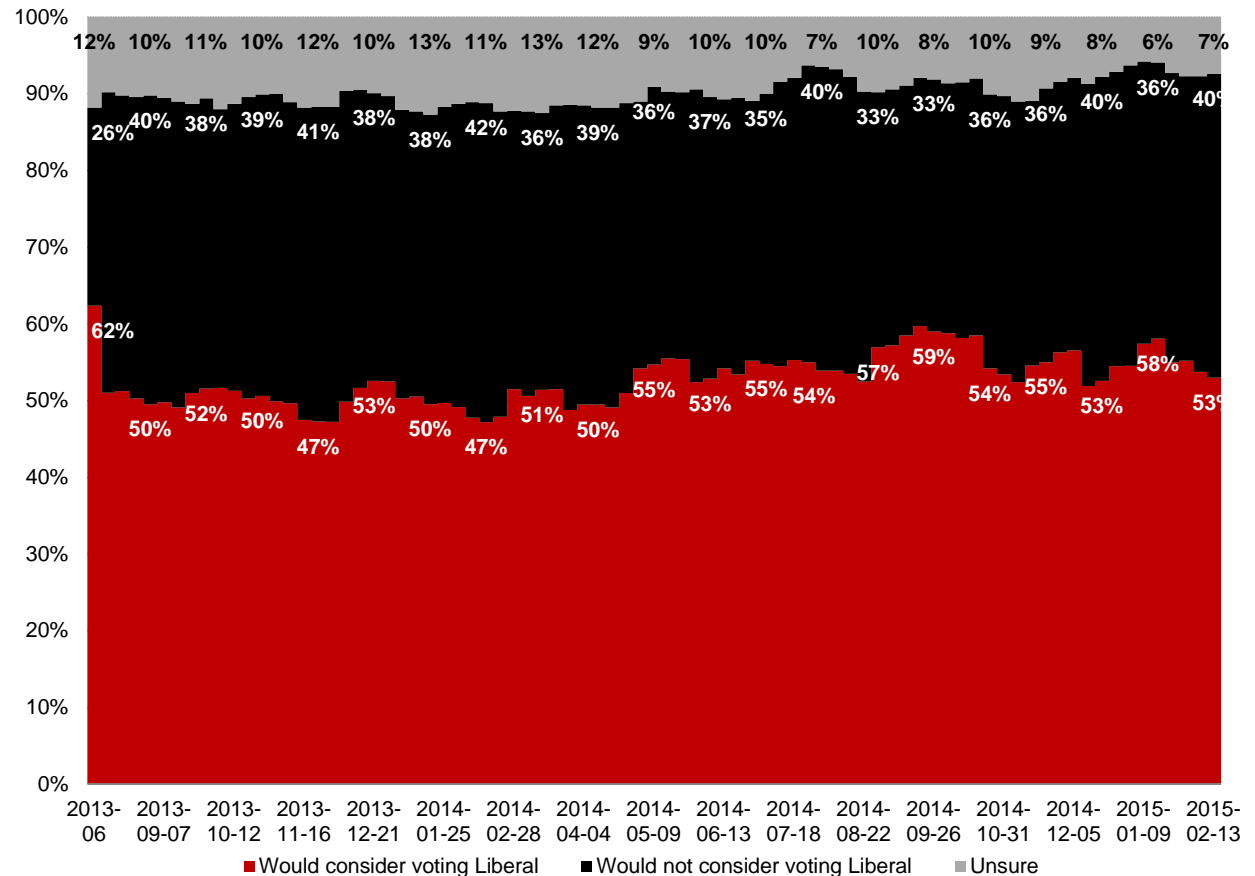


Question: For each of the following federal political parties, please tell me if you would consider or not consider voting for it.
[RANDOMIZE] Liberal Party

Contact: Nik Nanos
Ottawa: (613) 234-4666 x 237
Washington DC: (202) 697-9924
nnanos@nanosresearch.com

National – Weekly Tracking

(Four week rolling average ending February 13th, 2015, n=1,000)



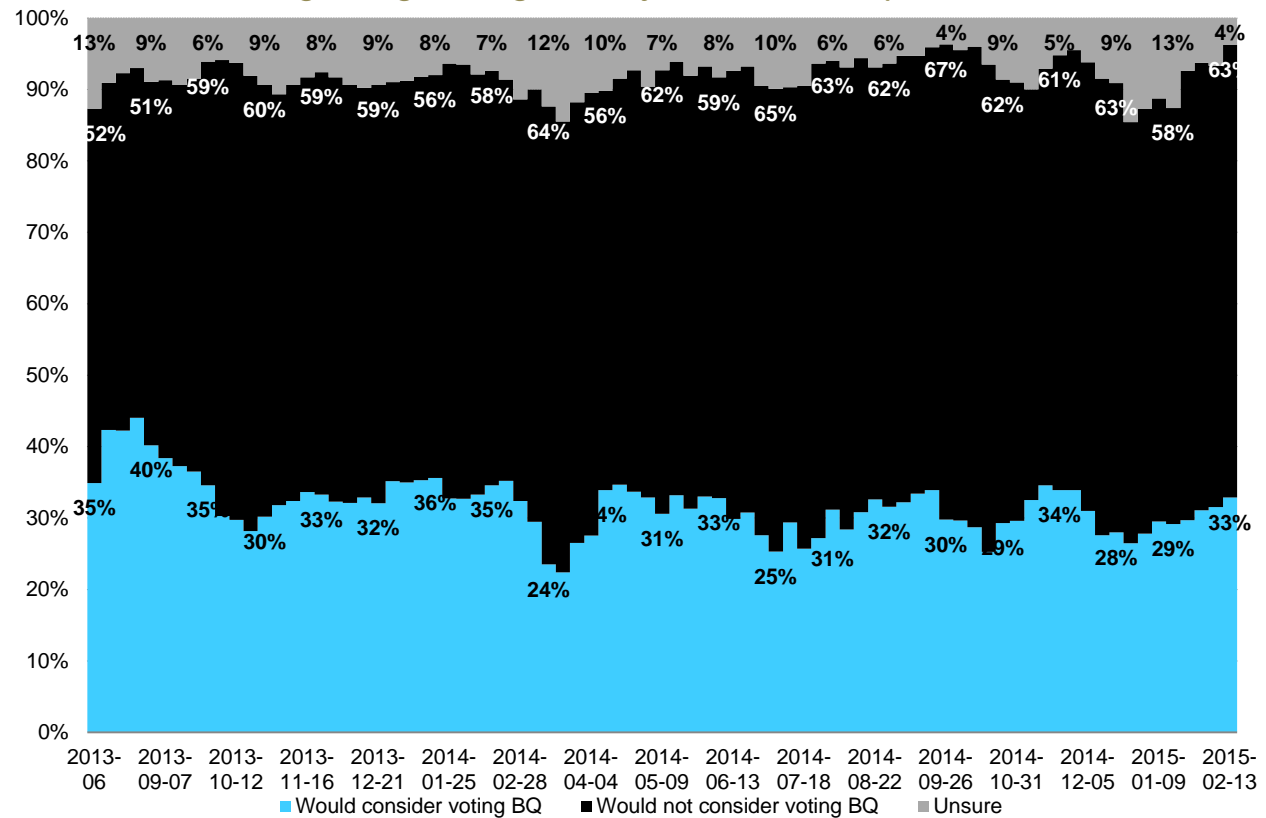
Consider Bloc



Question: For each of the following federal political parties, please tell me if you would consider or not consider voting for it. [RANDOMIZE] Bloc Québécois

Contact: Nik Nanos
Ottawa: (613) 234-4666 x 237
Washington DC: (202) 697-9924
nnanos@nanosresearch.com

Quebec only – Weekly Tracking
Four week rolling average ending February 13th, 2015, n=248)



Consider Green

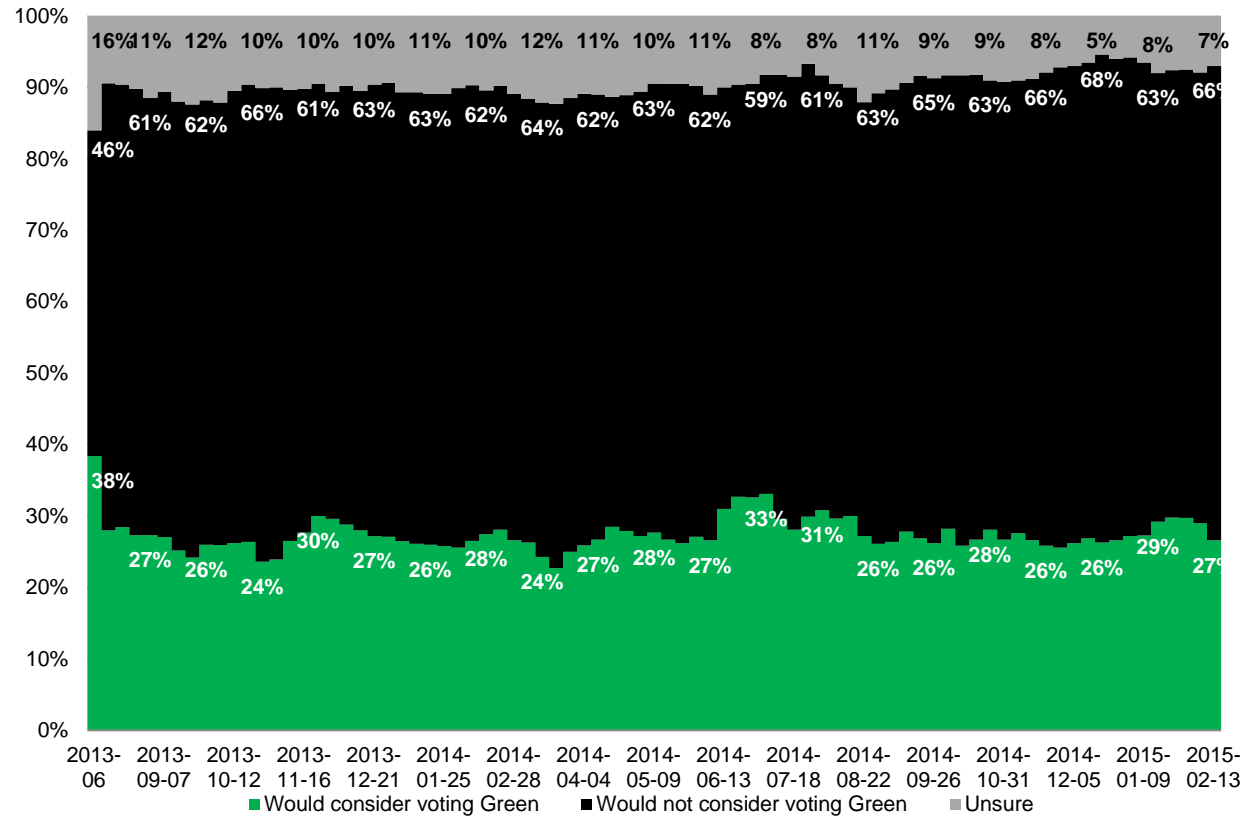


Question: For each of the following federal political parties, please tell me if you would consider or not consider voting for it.
[RANDOMIZE] Green Party

Contact: Nik Nanos
Ottawa: (613) 234-4666 x 237
Washington DC: (202) 697-9924
nnanos@nanosresearch.com

National – Weekly Tracking

(Four week rolling average ending February 13th, 2015, n=1,000)





National Leadership Tracking

Prime Minister



Question: Of the current federal political party leaders, could you please rank your top two current local preferences for Prime Minister? [ROTATE PARTY LEADERS]

Contact: Nik Nanos

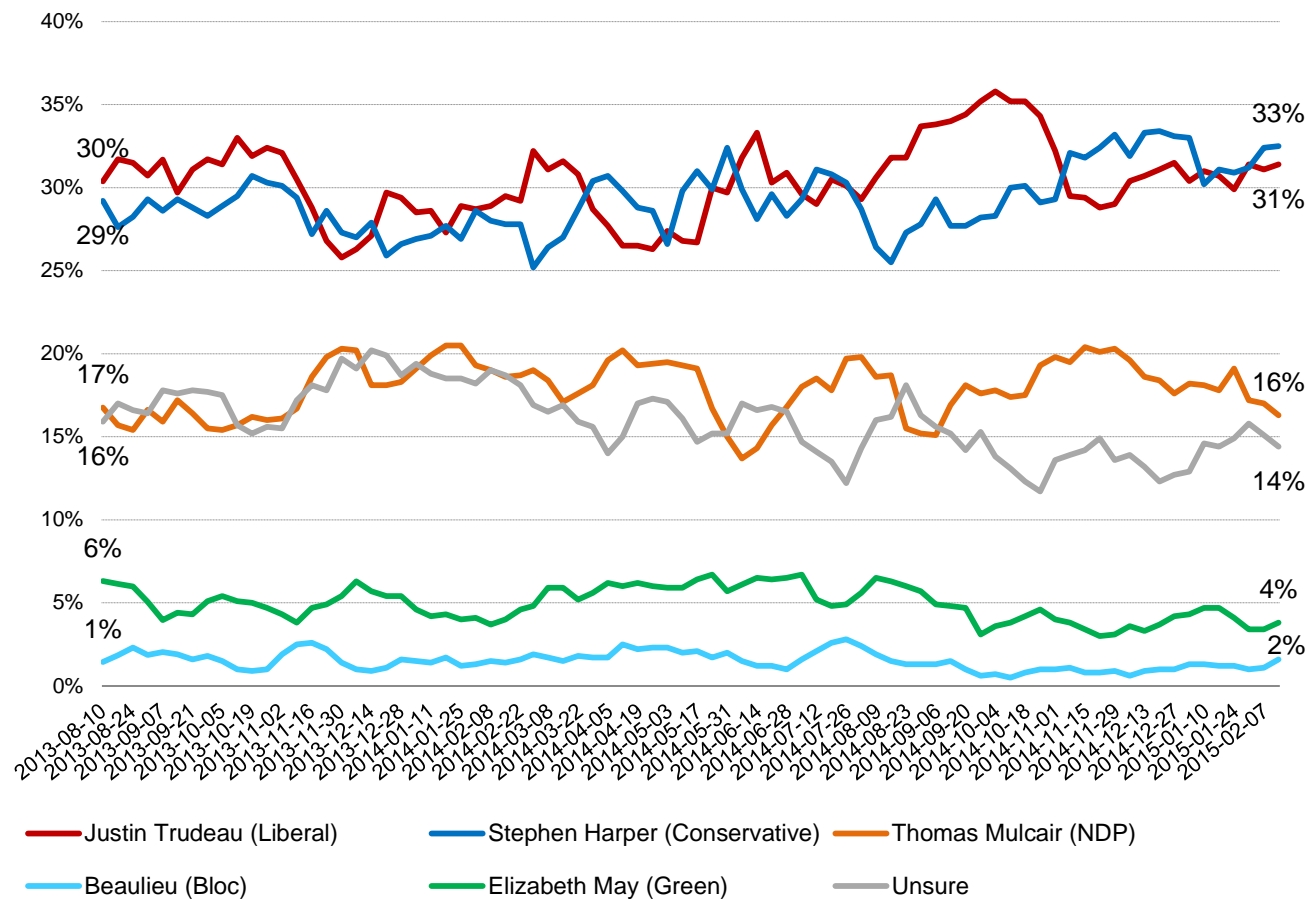
Ottawa: (613) 234-4666 x 237

Washington DC: (202) 697-9924

nnanos@nanosresearch.com

National – Weekly Tracking – First Ranked Choice

(Four week rolling average ending February 13th, 2015, n=1,000)



Harper



Question: For each of the following federal political party leaders, do you think they have or do not have the qualities to be a good political leader? [RANDOMIZE] Stephen Harper

Contact: Nik Nanos

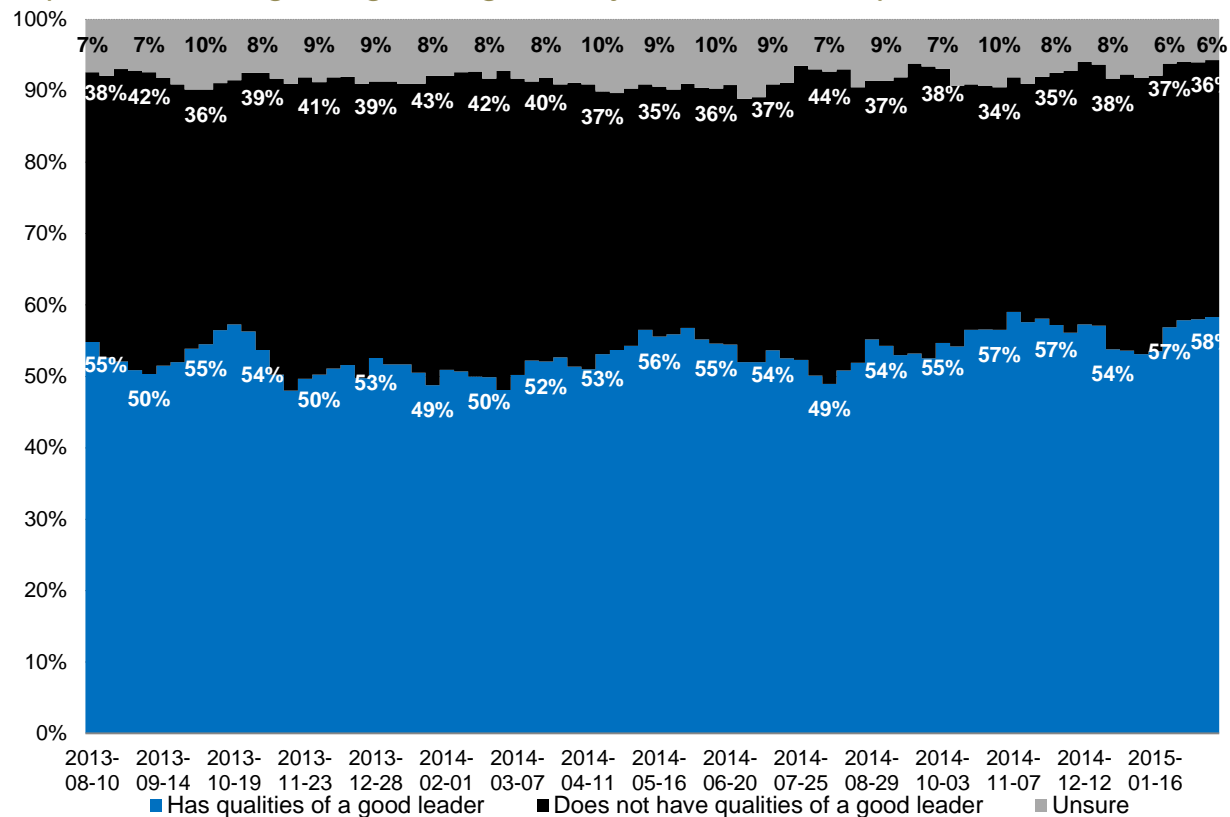
Ottawa: (613) 234-4666 x 237

Washington DC: (202) 697-9924

nnanos@nanosresearch.com

National – Weekly Tracking

(Four week rolling average ending February 13th, 2015, n=1,000)



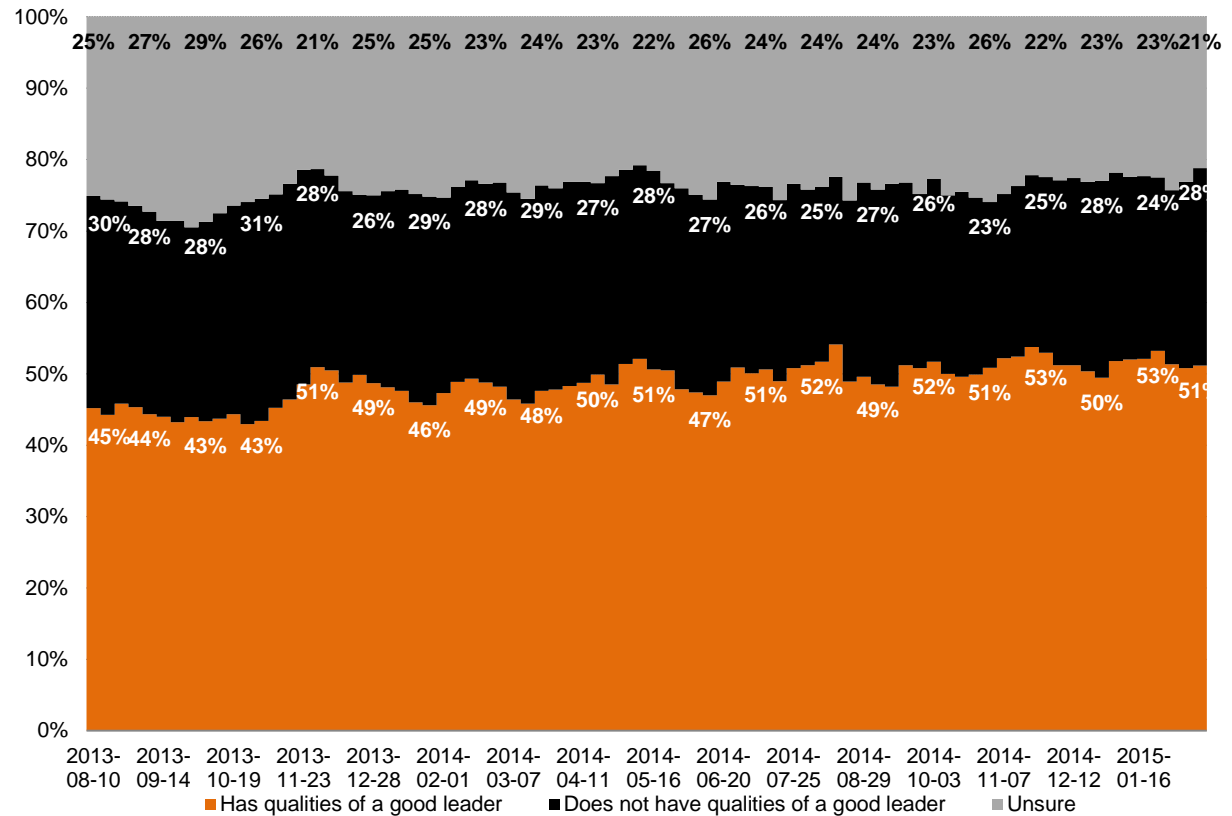
Mulcair



Question: For each of the following federal political party leaders, do you think they have or do not have the qualities to be a good political leader? [RANDOMIZE] Thomas Mulcair

Contact: Nik Nanos
Ottawa: (613) 234-4666 x 237
Washington DC: (202) 697-9924
nnanos@nanosresearch.com

National – Weekly Tracking (Four week rolling average ending February 13th, 2015, n=1,000)



Trudeau



Question: For each of the following federal political party leaders, do you think they have or do not have the qualities to be a good political leader? [RANDOMIZE] Justin Trudeau

Contact: Nik Nanos

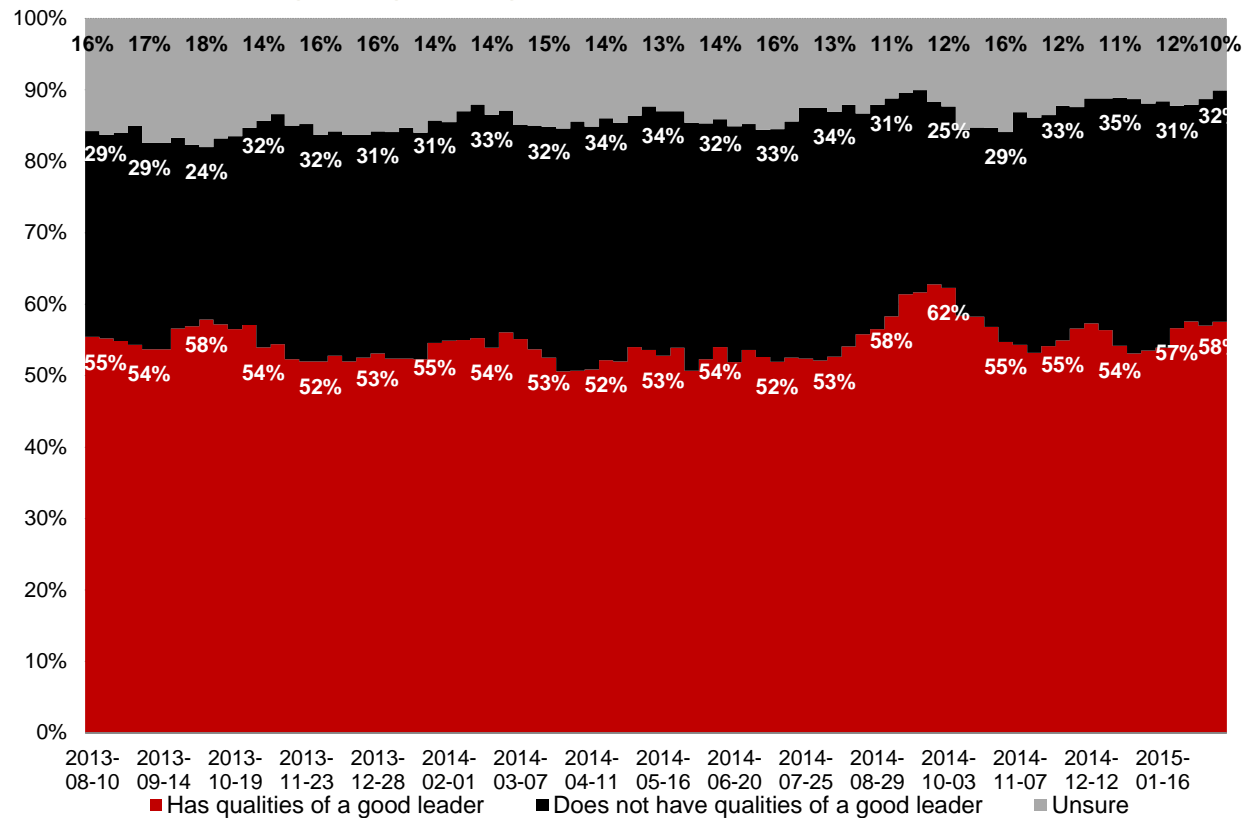
Ottawa: (613) 234-4666 x 237

Washington DC: (202) 697-9924

nnanos@nanosresearch.com

National – Weekly Tracking

(Four week rolling average ending February 13th, 2015, n=1,000)



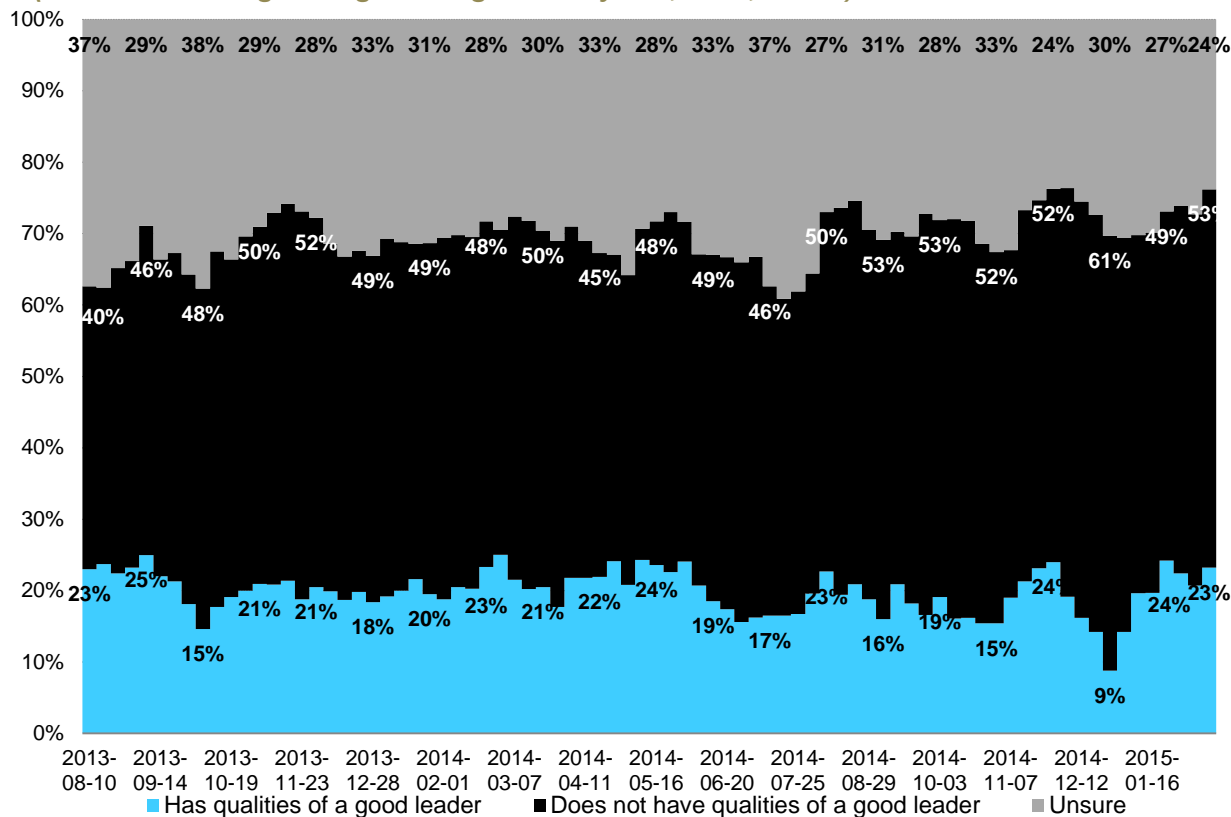
Beaulieu



Question: For each of the following federal political party leaders, do you think they have or do not have the qualities to be a good political leader? [RANDOMIZE] Mario Beaulieu

Contact: Nik Nanos
Ottawa: (613) 234-4666 x 237
Washington DC: (202) 697-9924
nnanos@nanosresearch.com

Quebec only – Weekly Tracking (Four week rolling average ending February 13th, 2015, n=248)



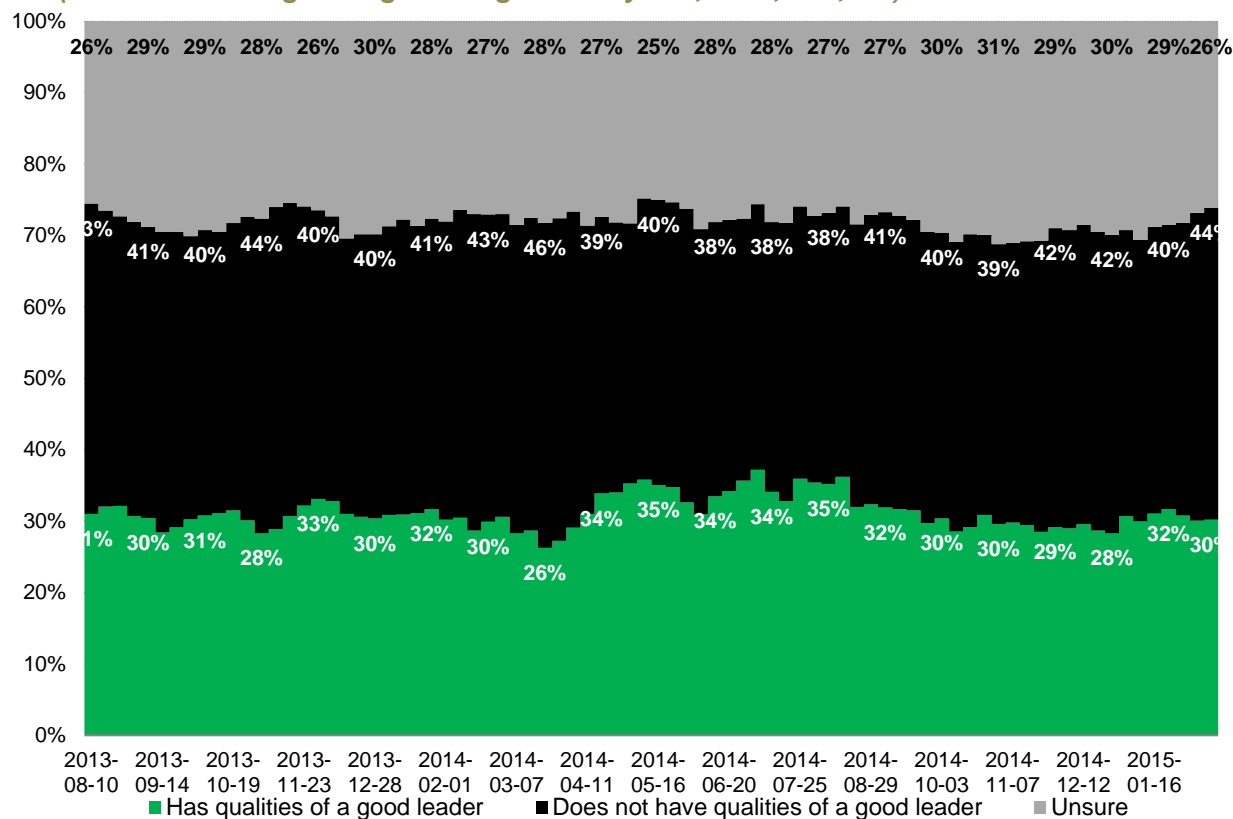
May



Question: For each of the following federal political party leaders, do you think they have or do not have the qualities to be a good political leader? [RANDOMIZE] Elizabeth May

Contact: Nik Nanos
Ottawa: (613) 234-4666 x 237
Washington DC: (202) 697-9924
nnanos@nanosresearch.com

National – Weekly Tracking (Four week rolling average ending February 13th, 2015, n=1,000)



PATH
FORWARD!

WINNING
CONDITIONS



VALIDATE



TEST
IDEAS



DIAGNOSE
ENV



REVIEW
RESEARCH



Methodology

Survey Methodology

The Weekly Nanos Party Power Index Tracking is produced by the Nanos Research Corporation, headquartered in Canada, which operates in Canada and the United States. The data is based on random telephone interviews with 1,000 Canadians (land- and cell-lines), using a four week rolling average of 250 respondents each week, 18 years of age and over. The random sample of 1,000 respondents may be weighted by age and gender using the latest census information for Canada. The interviews are compiled into a four week rolling average of 1,000 interviews, where each week the oldest group of 250 interviews is dropped and a new group of 250 interviews is added. The views of 1,000 respondents are compiled into a diffusion brand index for each party that goes from 0 to 100, where 0 means that the party has no brand strength and 100 means it has maximum brand strength. A score above 50 is an indication of brand strength for the party and its leader at this time.

The current report is based on a four week rolling average of Canadian opinion ending February 13th, 2015.

A random telephone survey of 1,000 Canadians is accurate 3.1 percentage points, plus or minus, 19 times out of 20.

About Nanos

Nanos is one of North America's most trusted research and strategy organizations. Our team of professionals is regularly called upon by senior executives to deliver superior intelligence and market advantage whether it be helping to chart a path forward, managing a reputation or brand risk or understanding the trends that drive success. Services range from traditional telephone surveys, through to elite in-depth interviews, online research and focus groups. Nanos clients range from Fortune 500 companies through to leading advocacy groups interested in understanding and shaping the public landscape. Whether it is understanding your brand or reputation, customer needs and satisfaction, engaging employees or testing new ads or products, Nanos provides insight you can trust.



View our brochure

Nik Nanos FMRIA

Chairman, Nanos Research Group
Ottawa (613) 234-4666 ext. 237
Washington DC (202) 697-9924
nnanos@nanosresearch.com