

THE FUTURE OF WOOLOOWIN IS ON ITS WAY

In March 2012, the Airport Link Woolloowin worksite will be transformed into a quiet, leafy pocket park for the local community to enjoy as part of the Woolloowin Urban Mitigation and Community Development (UMCD) Plan. Within the \$3 million budget, further enhancements to neighbouring areas, including Melrose Park, will also be possible.

Through extensive consultation with residents, CNI has been able to provide a detailed plan to the State's Coordinator-General for his approval.

We have received a strong response throughout the consultation process and an outline of how feedback has influenced the UMCD Plan can be found on the back page of this newsletter. A complete report outlining survey results and the final designs can be viewed at www.citynorthinfrastructure.com.au

In addition to your comments we have also held discussions with Queensland Government departments and Brisbane City Council, who will be responsible for maintenance of the pocket park once complete.

Based on all the feedback received, key elements of the final design include:

- The design for the Rose Street pocket park will be based on Pocket Park Option A (see visual below)

- The pocket park will be predominantly green open space, with a path, suitable tree and shrub planting along boundaries, a shelter with picnic facilities and a sculptural play area for children
- Tree plantings along Rose Street and Junction Road, creating a 'Green Avenue'
- Upgrade works to Melrose Park, including a new concrete path along the park boundary; additional BBQ facilities and more seating; new character entry gates and additional trees planted along park boundaries
- Construction of a pedestrian bridge at the southern end of Melrose Park to improve pedestrian connectivity and safety along Rose Street
- Development of a Shaw Road cycle and pedestrian crossing
- Development of Chalk Street and Shaw Road gateway entry statements.



CONTACT DETAILS

For further information, please contact CNI on:
P 1800 990 038
E info@cni.qld.gov.au
W www.citynorthinfrastructure.com.au
GPO Box 2563 Brisbane QLD 4001

WOOLOOWIN UMCD MAP

LEGEND

 PLAN BOUNDARY



GATEWAY ENTRY POINT INTO WOOLOOWIN WITH SUPPLEMENTARY STREET LANDSCAPING & ARCHITECTURAL ELEMENTS



'GREEN AVENUE' ON ROSE ST & JUNCTION RD TO BE PROVIDED AS PART OF THE AIRPORT LINK STREET TREE PLANTING SCHEME

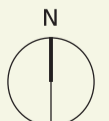
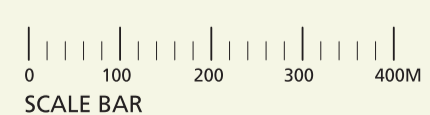


KEDRON BROOK REHABILITATION WORK TO BE A PART OF AIRPORT LINK PROJECT WORKS*

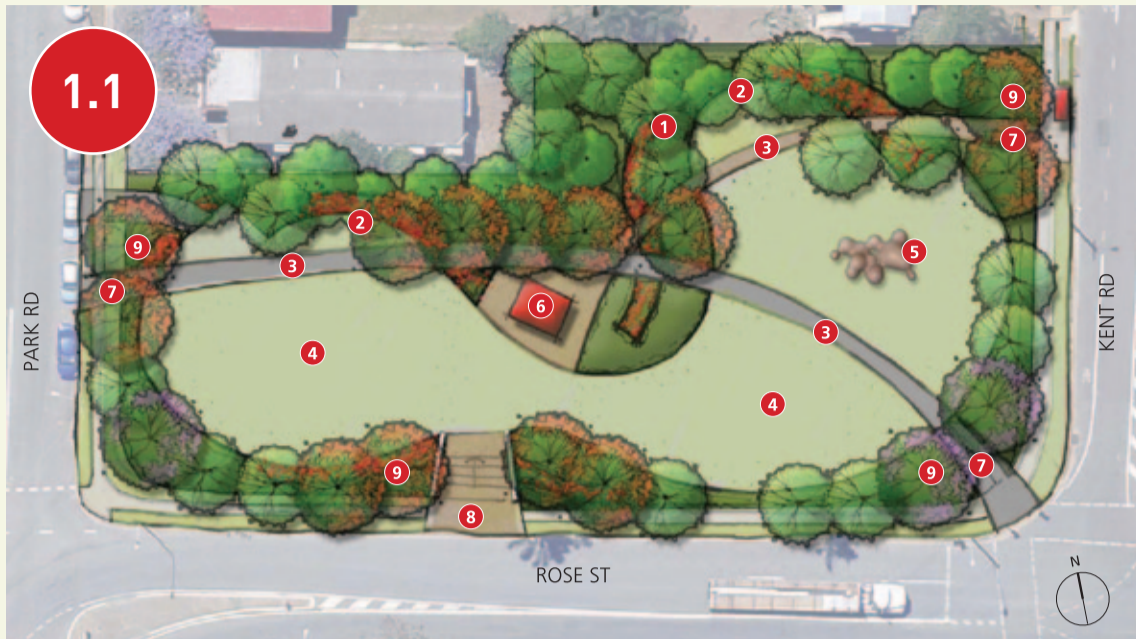
* SCOPE OF AIRPORT LINK WORKS TO BE CONFIRMED.



- 1.1** Rose Street pocket park
- 1.2** Melrose Park upgrade works
- 1.3** Pedestrian bridge link from Rose Street to Melrose Park
- 1.4** 'Green Avenue' to Rose Street & Junction Road provided as part of the Airport Link street tree planting scheme
- 1.5** Shaw Road cycleway crossing
- 1.6** Shaw Road gateway entry
- 1.7** Chalk Street gateway entry



NOTE: SUBJECT TO FINAL APPROVAL BY RELEVANT AUTHORITIES



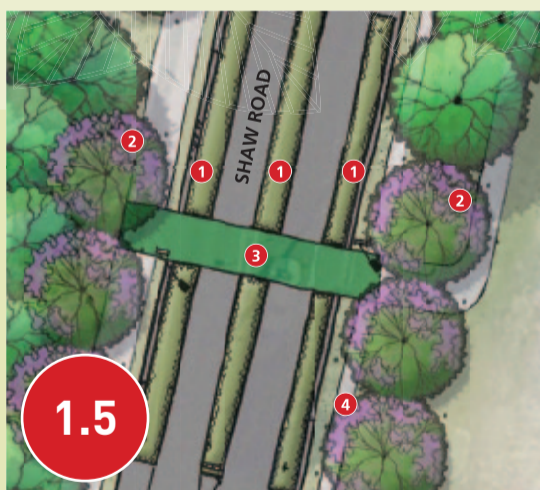
WOOLLOOWIN POCKET PARK

1. Buffer planting to rear boundary
2. Timber bench seats
3. Path
4. Level lawn open area
5. Public sculptural play area (image indicative only)
6. Park shelter with picnic facilities
7. Park entry with character gates
8. Entry stairs
9. Trees to street sides to frame park



MELROSE PARK UPGRADE WORKS, INCLUDING PEDESTRIAN BRIDGE

1. Rose Street pedestrian and cycle bridge (see 3D visual above)
2. Concrete path along boundary
3. Upgrade to playground area, including new seating and BBQ facilities
4. Park entry with character gates
5. Additional tree plantings along park boundaries
6. Sports playing fields remain unchanged



SHAW ROAD CROSSING

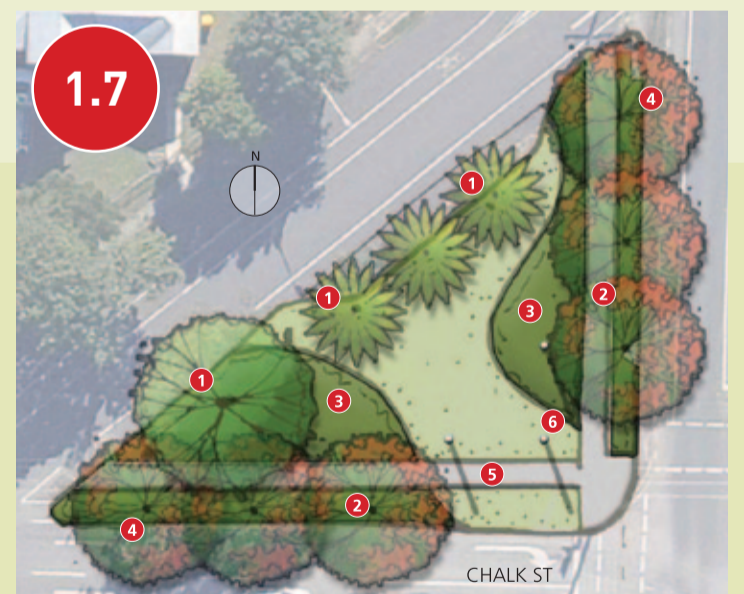
1. Feature landscaping, including ornamental grasses
2. Feature trees to frame cycleway crossing
3. Pedestrian and cycle crossing
4. Pedestrian concrete path

We will work with Brisbane City Council to finalise the design and location of the Shaw Road crossing.



SHAW ROAD ENTRY

1. Proposed location for Kedron Brook sign
2. Turfed areas
3. Additional trees
4. Feature landscaping, including ornamental grasses
5. Pedestrian concrete path
6. Flag poles to provide community and event notices



CHALK STREET ENTRY

1. Existing palm trees to be retained
2. Feature landscaping, including ornamental grasses
3. Planting areas
4. Feature trees to frame island
5. Paths
6. Flag poles to provide community and event notices

HOW YOUR FEEDBACK INFLUENCED THE PLAN

RESIDENTS SAID...	THE PLAN HAS...
You prefer the design of Pocket Park Option A	Based its design on Pocket Park Option A
You would like to see a playground in the pocket park to keep the kids entertained and don't like the public art	Changed the public art piece into a sculpture play experience
You didn't want a six metre wide cycle path through the pocket park	Included a smaller path through the pocket park
You didn't want BBQ facilities in the pocket park	Incorporated improvements to current BBQ facilities at Melrose Park rather than locate them at the pocket park
Your preference was for the Green Avenue design option with elements of Gateways	Used the Green Avenue option as the base with significant tree planting along Junction Road, but still incorporated some gateway entry treatments (the Green Avenue will occur as part of the Airport Link street tree planting scheme)
You wanted increased planting of trees in Melrose Park but not in the playing field area	Allowed for significant planting of new trees in Melrose Park along Rose Street, Roseleigh Street and the park's northern boundary
You wanted to see construction of a pedestrian bridge in Melrose Park to improve pedestrian connectivity along Rose Street	Incorporated a pedestrian bridge in the southern area of Melrose Park
You wanted to see upgrades to Eagle Junction rail station	Queensland Rail to commence a refurbishment of Eagle Junction rail station in the next year (see update from Queensland Rail below)
You wanted to see increased pedestrian and cycle safety at Shaw Road	A pedestrian and cycle crossing will be installed at Shaw Road
You did not want any traffic lights	Not used traffic lights in any way to improve pedestrian and cyclist safety
You didn't want elements that would deteriorate without extensive maintenance	Incorporated design elements that are low maintenance and meet Brisbane City Council guidelines

A more detailed overview of the feedback received is contained in the survey report, which can be viewed at www.citynorthinfrastructure.com.au

MESSAGE FROM PLACE DESIGN GROUP – URBAN DESIGNERS FOR THE PROJECT

As the appointed landscape architects for the Woolloowin UMCD Plan, it was our task to develop the final designs for submission to the Coordinator-General.

We appreciated the opportunity to actively engage and listen to individual community members at the Community Day. The insights and local knowledge provided allowed the plans to be further refined to better reflect the community's needs.

PLACE Design Group thanks you for the time and ideas you have provided throughout this process. We have enjoyed the experience of working with the community and believe the project leaves a lasting legacy for Woolloowin.

MESSAGE FROM BBS – COMMUNITY ENGAGEMENT CONSULTANTS FOR THE PROJECT

BBS was appointed as an independent facilitator of the community engagement process for the Woolloowin UMCD Plan.

Our goal has been to provide local residents with multiple opportunities to provide their views, and importantly provide details on the feedback received and how it has shaped designs throughout the process.

The response from the Woolloowin community has been strong, demonstrating the great passion residents have for their local area.

While it's impossible to incorporate all feedback, we believe the comments received during the engagement process have been well reflected in the final designs. We thank you for your participation.

UPDATE FROM GOVERNMENT STAKEHOLDERS

Along with feedback and ideas received from residents being incorporated into the final designs you see today, CNI is also required to obtain agreement from local and State government bodies. Queensland Rail, Brisbane City Council and the Department of Transport and Main Roads have been consulted throughout this process. All of the community feedback received as part of this process will be passed to the relevant government body. An update from Queensland Rail on Eagle Junction Station is below.

Queensland Rail

Queensland Rail has announced a \$10 million refurbishment of Eagle Junction Station to commence in December 2010/January 2011. This project will upgrade and improve station infrastructure at Eagle Junction, providing commuters with better facilities and services. The scope of works will include the provision of a new ticketing office, additional platform shelters, station furniture, signage, and platform resurfacing works.

For further information regarding the refurbishment of Eagle Junction Station please contact the project team on 3235 1516 or email passengerprojects@qr.com.au

PROJECT TIMELINE

PHASE	TIMEFRAME	DETAILS
Announcement that the Woolloowin worksite will be handed back to the community	June 2009	
Resident survey distributed	June 2010	Approx. 3000 distributed
Resident survey results compiled and draft options developed	July 2010	120 surveys received
Draft options presented to residents through a newsletter with accompanying survey	September 2010	Approx. 3000 distributed
Community consultation day	September 2010	95 people attended
Community feedback and survey results used to design preferred options	September 2010	158 surveys received
Resident newsletter outlining designs that will be sent to Coordinator-General	October 2010	Approx. 3000 distributed
Urban Mitigation and Community Development Plan submitted to the Coordinator-General	October 2010	
Reinstatement of site commences	March 2012	

WHAT'S NEXT?

You have a final opportunity to provide feedback on the designs by sending your views to the Coordinator-General's office.

Once the Coordinator-General has considered the report, CNI will provide further information regarding the final plans and their timelines.

Coordinator-General
Attention: Director, Infrastructure Projects
 Department of Infrastructure and Planning
 PO Box 15009
 City East, QLD, 4002
info@dip.qld.gov.au