

Mysterious Summer Shawl

Materials

Yarn: 400 yds of sport weight wool or mostly wool blend (we used Imperial Yarn "Tracie")

Needles: US Size 8 circular needles of at least 24" length

Notions: tapestry needle, thin contrasting yarn for lifeline (optional)

Gauge

4 1/2 sts and 9 rows per inch in unstretched, unblocked garter stitch (knit every row). Gauge isn't critical.

Abbreviations

RS - right side
WS - wrong side
K2tog - knit 2 together
YO - yarn over



Cast on 1 stitch.

Row 1: YO (yarn over) and knit to end of row.

Repeat Row 1 until you have 66 stitches on the needle. This forms the base for your shawl.

Bind off all the stitches, leaving one stitch on the needle. Do not break yarn.

*YO, pick up a knit stitch through the first loop to the left (from the yo at the beginning of each row); repeat from * to end of two sides of triangle. You will not be picking up any stitches from the bound off edge. You will have 131 stitches on the needle. Place a marker on either side of the center stitch at the point of the triangle.

Work Charts 1, 2, and 3. (attached separately)

Note: Follow charts by working across rows from right to left. Chart only shows odd (right side) rows. Work all even (wrong side) rows as follows: k3, purl to last three stitches, k3. You should have 227 stitches at the end of the charts.

(RS) Cast on 11 stitches using a knitted or cable cast on.

Set Up Row: knit 9, k2tog, YO, k1. Turn.

Begin working Chart 4 *on row 2*. Repeat Chart 4, Rows 1-12 until end of shawl edge. End by knitting

Row 12 followed by the Set Up Row. Bind off all stitches. Weave in ends.

Note: Chart 4 creates an attached border to the bottom edge of the shawl. Unlike previous charts, Chart 4 shows both RS and WS rows. RS rows are worked from right to left. WS are worked from left to right.

Block piece by soaking, rolling in a towel, and then pinning out to dimensions: 22.5"(h) x 47"(w). Allow to dry before unpinning.

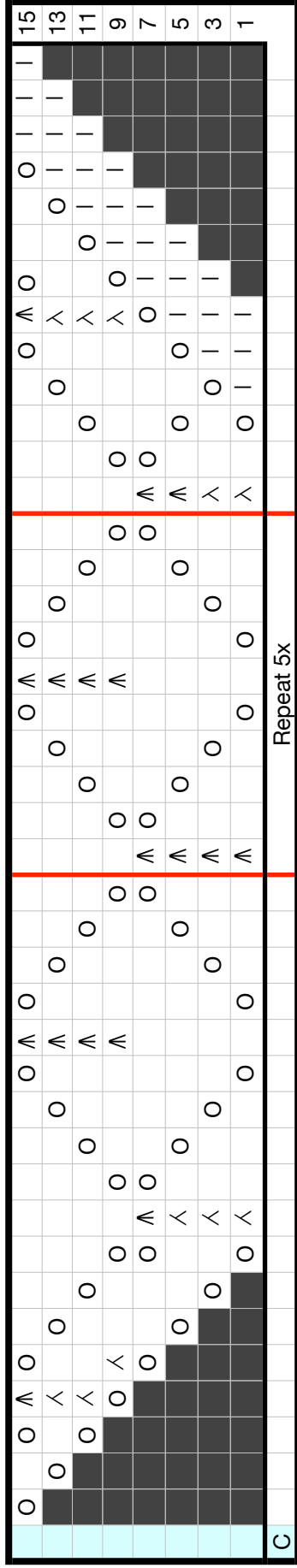


8826 Main Street • Woodstock, GA 30188 • 678-494-5242 • thewholenineyarns.com

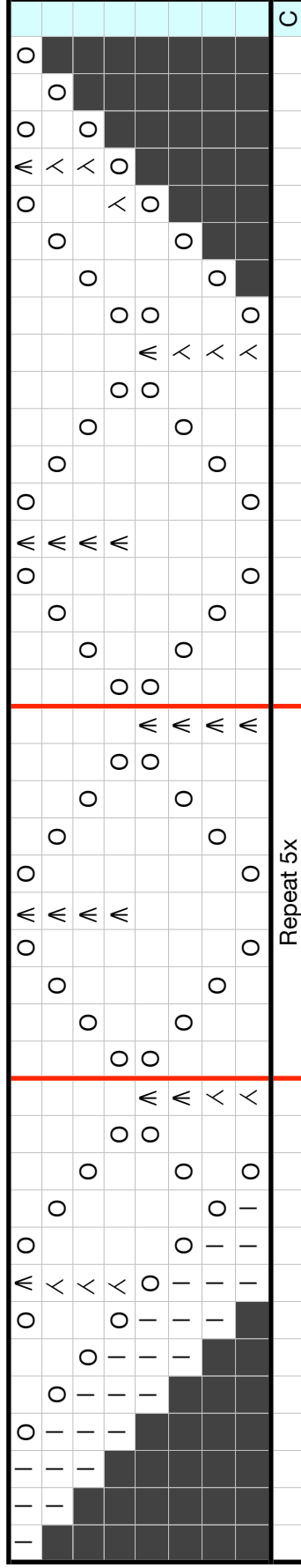
© 2011 The Whole Nine Yarns • All rights reserved • Do not manufacture for profit • Do not resell pattern

Mysterious Summer Shawl

CHART 1



First Half



Second Half

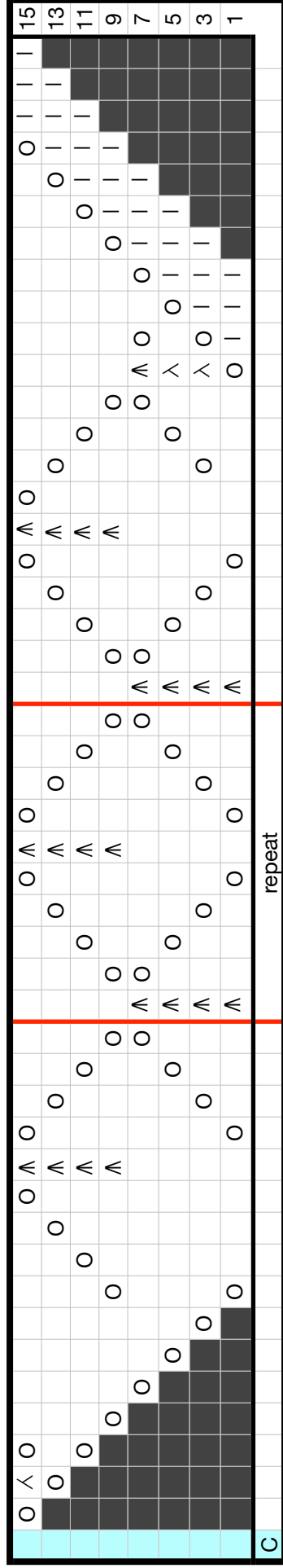
Key

- = knit on right side, purl on wrong side
- l = knit on right side and also on wrong side
- O = yo
- λ = ssk
- λ = k2tog
- Λ = s2kp (slip two stitches as if to knit together, knit 1, pass slipped stitches over)
- C = Center Stitch, overlap pattern halves here

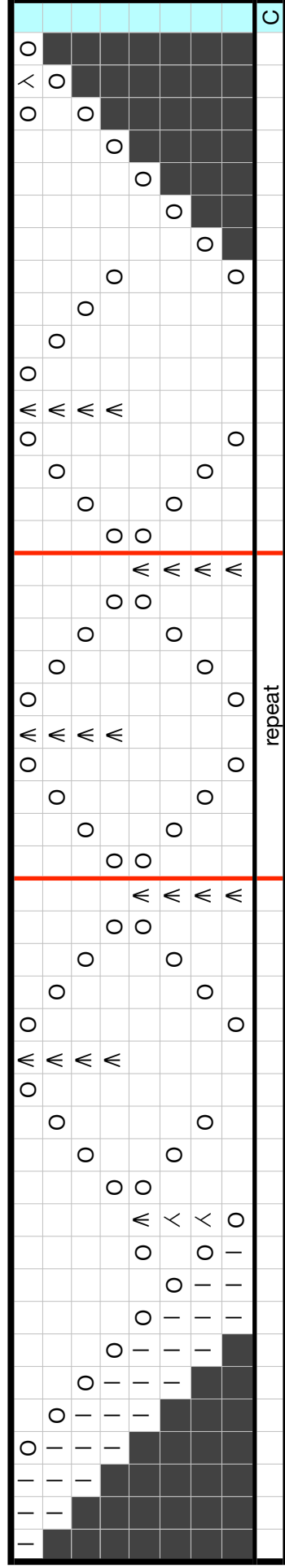


Mysterious Summer Shawl

CHART 2



First Half



Second Half

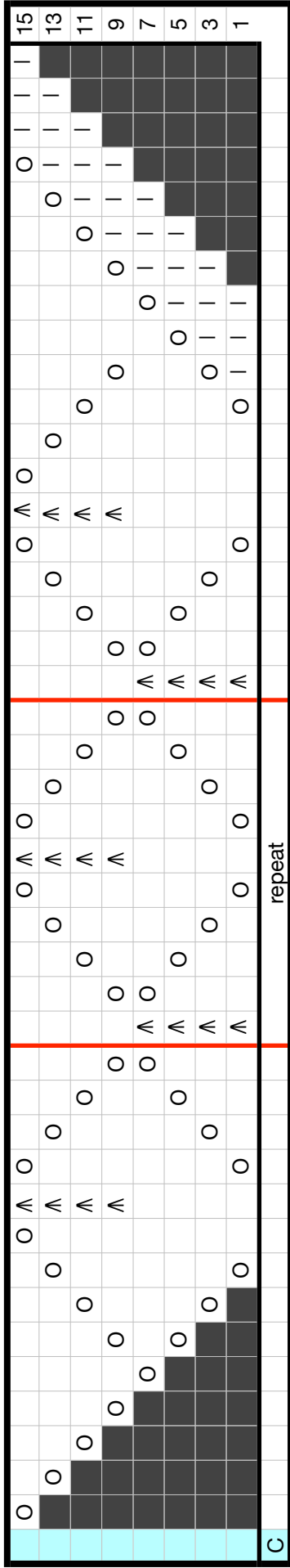
Key

- = knit on right side, purl on wrong side
- | = knit on right side and also on wrong side
- O = yo
- ^ = ssk
- / = k2tog
- ^ = s2kp (slip two stitches as if to knit together, knit 1, pass slipped stitches over)
- C = Center Stitch, overlap pattern halves here

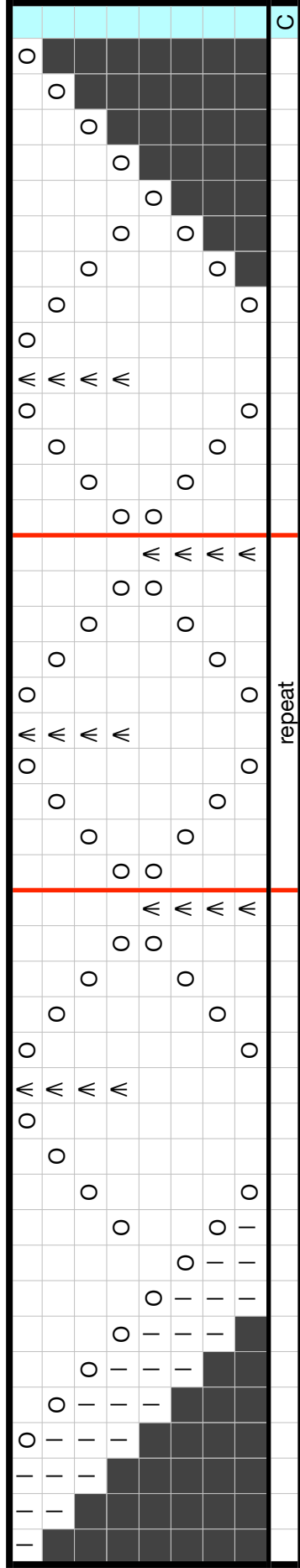


Mysterious Summer Shawl

CHART 3



First Half



Second Half

Key

- = knit on right side, purl on wrong side
- | = knit on right side and also on wrong side
- O = yo
- λ = ssk
- ∧ = k2tog
- Λ = s2kp (slip two stitches as if to knit together, knit 1, pass slipped stitches over)
- C = Center Stitch, overlap pattern halves here



