



DNA Tribes® SNP Admixture Results by Population

August 1, 2012

Introduction

This document lists population admixture results for the 8 continental zones and 24 world regions identified by DNA Tribes® SNP analysis as of August 1, 2012. DNA Tribes® SNP analysis is performed based on proprietary statistical algorithms not available elsewhere. For this reason, DNA Tribes® SNP results can differ from other admixture analyses using similar reference samples.

Admixture results listed in this document are **average scores for individual members of each population**. However, each person’s results will vary based on what genetic material each person has inherited and the genetic variation within each population.

These admixture components express the relative geographical relationships between SNP samples in our database. However, these genetic components can cross perceived ethnic and cultural distinctions to express more ancient migrations and patterns of trade and contact between world populations.

Table of Contents

- Introduction..... 1
- Admixture Analysis: 8 Continental Zones..... 3
 - 8 Continents Admixture: African Populations (Part 1) 4
 - 8 Continents Admixture: African Populations (Part 2) 5
 - 8 Continents Admixture: African Populations (Part 3) 6
 - 8 Continents Admixture: Middle Eastern and Horn of Africa Populations..... 7
 - 8 Continents Admixture: West Asian Populations..... 8
 - 8 Continents Admixture: European Populations (Part 1) 9
 - 8 Continents Admixture: European Populations (Part 2) 10
 - 8 Continents Admixture: Native American and Latino Populations 11
 - 8 Continents Admixture: South Asian Populations (Part 1)..... 12
 - 8 Continents Admixture: South Asian Populations (Part 2)..... 13
 - 8 Continents Admixture: East Asian Populations..... 14
 - 8 Continents Admixture: North Asian Populations..... 15
 - 8 Continents Admixture: Southeast Asian Populations 16



Admixture Analysis: 24 World Regions..... 17

 Description of World Regions 18

 Neighbor-Joining Tree of World Regions 19

 24 World Regions Admixture: African Populations (Part 1) 20

 24 World Regions Admixture: African Populations (Part 2) 21

 24 World Regions Admixture: African Populations (Part 3) 22

 24 World Regions Admixture: Middle Eastern and Horn of Africa Populations 23

 24 Regions Admixture: West Asian Populations..... 24

 24 World Regions Admixture: European Populations (Part 1) 25

 24 World Regions Admixture: European Populations (Part 2) 26

 24 World Regions Admixture: Native American and Latino Populations 27

 24 World Regions Admixture: South Asian Populations (Part 1)..... 28

 24 World Regions Admixture: South Asian Populations (Part 2)..... 29

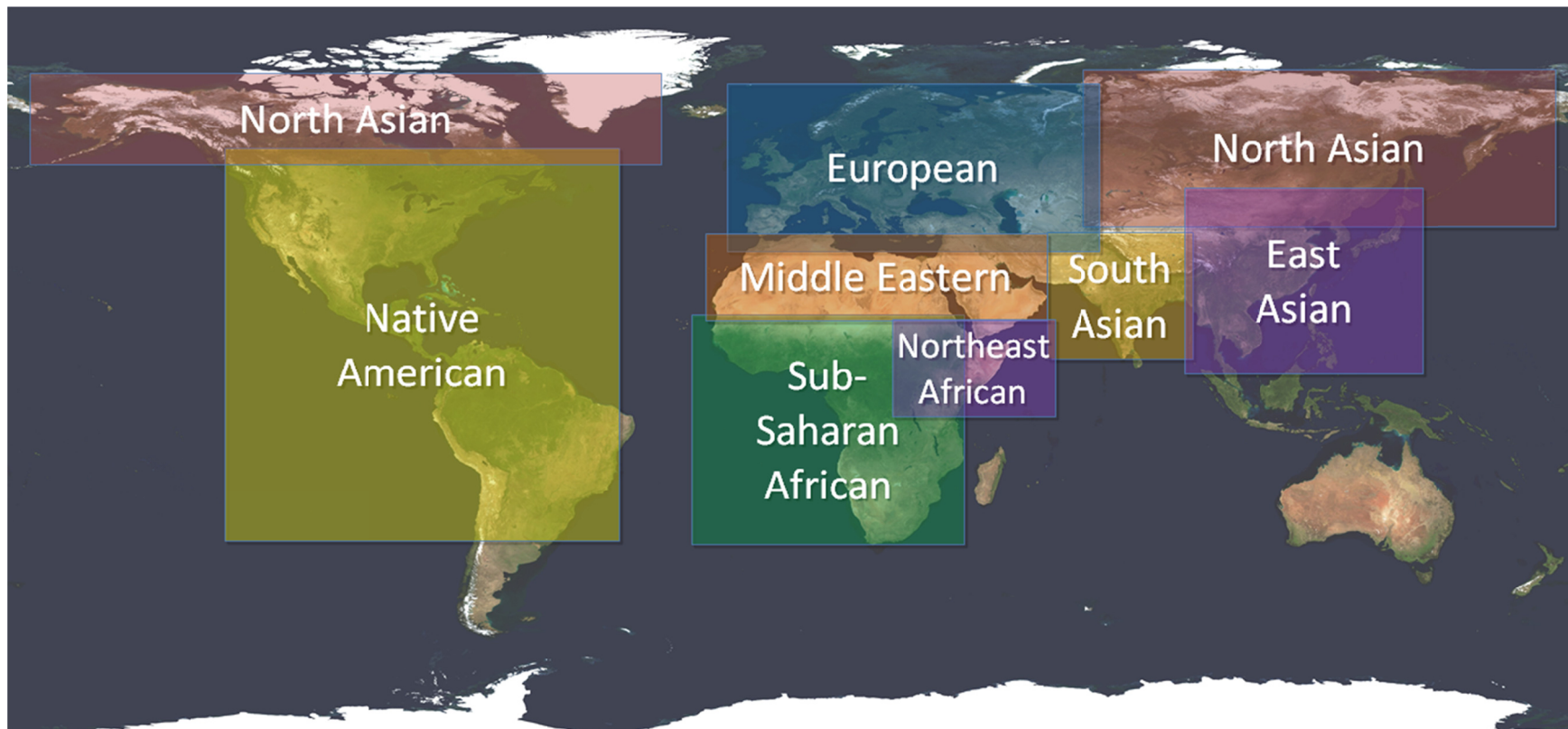
 24 World Regions Admixture: East Asian Populations 30

 24 World Regions Admixture: North Asian Populations..... 31

 24 World Regions Admixture: Southeast Asian Populations 32

Admixture Analysis: 8 Continental Zones

The first group of admixture tables is based on the 8 continental zones (illustrated in the map below). Each continental zone can include multiple cultures and languages and cross perceived boundaries between modern nations and ethnic groups. Admixture results listed below are **average scores for individual members of each population**. However, each person's results will vary based on what genetic material each person has inherited and the genetic variation within each population.



8 Continents Admixture: African Populations (Part 1)

Population	Sub-Saharan African	Northeast African	Middle Eastern	European	South Asian	East Asian	North Asian	Native American
African-American S.W. USA	72.7%	3.3%	1.6%	17.7%	0.6%	0.5%	0.7%	2.9%
Bambara West Africa	97.4%	1.7%	0.4%	0.0%	0.2%	0.2%	0.1%	0.1%
Bamoun Cameroon	99.0%	0.6%	0.0%	0.0%	0.1%	0.1%	0.1%	0.1%
Brong	98.5%	0.5%	0.6%	0.1%	0.1%	0.0%	0.0%	0.1%
Dogon West Africa	96.9%	1.6%	0.7%	0.0%	0.1%	0.4%	0.1%	0.2%
Fang Cameroon	99.6%	0.1%	0.1%	0.0%	0.0%	0.1%	0.1%	0.0%
Fulani Nigeria	22.8%	70.5%	5.1%	1.3%	0.1%	0.0%	0.0%	0.2%
Hausa Nigeria	96.1%	3.2%	0.2%	0.0%	0.3%	0.2%	0.0%	0.0%
Igbo Nigeria	98.3%	0.5%	0.4%	0.4%	0.2%	0.3%	0.0%	0.0%
Kaba Chad	94.0%	5.6%	0.0%	0.0%	0.0%	0.3%	0.0%	0.0%
Kongo	99.2%	0.6%	0.1%	0.0%	0.0%	0.0%	0.0%	0.0%
Mandenka Senegal	95.5%	2.9%	1.2%	0.0%	0.2%	0.1%	0.1%	0.0%
Yoruba Nigeria	98.0%	1.4%	0.2%	0.0%	0.0%	0.2%	0.0%	0.1%

8 Continents Admixture: African Populations (Part 2)

Population	Sub-Saharan African	Northeast African	Middle Eastern	European	South Asian	East Asian	North Asian	Native American
African Qatar	43.6%	28.3%	15.3%	3.7%	7.5%	1.1%	0.3%	0.2%
Aka Central African Republic	100.0%	0.0%	0.0%	0.0%	0.0%	0.0%	0.0%	0.0%
Alur East-Central Africa	86.9%	13.1%	0.0%	0.0%	0.0%	0.0%	0.0%	0.0%
Bantu Kenya	83.5%	16.0%	0.0%	0.0%	0.1%	0.2%	0.1%	0.1%
Bulala Chad	66.7%	33.3%	0.0%	0.0%	0.0%	0.0%	0.0%	0.0%
Hadza Tanzania	69.9%	29.2%	0.0%	0.0%	0.2%	0.1%	0.1%	0.5%
Hema East-Central Africa	49.4%	50.1%	0.3%	0.0%	0.0%	0.0%	0.0%	0.2%
Khomani San South Africa	97.4%	0.0%	0.1%	1.0%	0.8%	0.2%	0.3%	0.2%
Kung Kalahari Desert	99.7%	0.3%	0.0%	0.0%	0.0%	0.0%	0.0%	0.1%
Luhya Kenya	84.4%	15.3%	0.0%	0.0%	0.0%	0.2%	0.0%	0.0%
Maasai Kenya	24.5%	75.0%	0.0%	0.0%	0.2%	0.1%	0.0%	0.1%
Mada Cameroon	84.3%	15.6%	0.0%	0.0%	0.0%	0.0%	0.0%	0.1%
Mbuti East-Central Africa	100.0%	0.0%	0.0%	0.0%	0.0%	0.0%	0.0%	0.0%
Nguni South Africa	99.3%	0.6%	0.0%	0.0%	0.0%	0.0%	0.0%	0.0%
Pedi South Africa	98.5%	0.0%	0.2%	1.2%	0.0%	0.1%	0.0%	0.1%
San Namibia	100.0%	0.0%	0.0%	0.0%	0.0%	0.0%	0.0%	0.0%
Sandawe Tanzania	28.8%	71.2%	0.0%	0.0%	0.0%	0.0%	0.0%	0.0%
Tswana South Africa	98.6%	0.0%	0.0%	0.8%	0.6%	0.0%	0.0%	0.0%

8 Continents Admixture: African Populations (Part 3)

Population	Sub-Saharan African	Northeast African	Middle Eastern	European	South Asian	East Asian	North Asian	Native American
Algeria	6.1%	9.7%	82.0%	1.7%	0.0%	0.2%	0.3%	0.1%
Canary Islands	0.5%	0.1%	27.5%	71.7%	0.0%	0.0%	0.0%	0.2%
Egypt 1	0.6%	10.4%	86.4%	1.9%	0.3%	0.4%	0.0%	0.0%
Egypt 2	1.5%	4.9%	90.8%	1.7%	0.6%	0.0%	0.2%	0.3%
Libya	3.1%	8.5%	87.7%	0.1%	0.0%	0.0%	0.3%	0.2%
Morocco	9.5%	12.0%	77.7%	0.7%	0.0%	0.0%	0.0%	0.1%
Mozabite Algeria-Mzab	8.2%	10.5%	80.3%	0.8%	0.0%	0.1%	0.0%	0.1%
North Morocco	3.2%	5.5%	89.1%	2.1%	0.0%	0.0%	0.2%	0.1%
Saharawi	5.4%	16.1%	78.4%	0.0%	0.0%	0.0%	0.0%	0.1%
South Morocco	13.8%	27.8%	57.8%	0.3%	0.0%	0.0%	0.2%	0.1%
Tunisia	2.6%	3.9%	93.3%	0.1%	0.0%	0.0%	0.0%	0.1%

8 Continents Admixture: Middle Eastern and Horn of Africa Populations

Population	Sub-Saharan African	Northeast African	Middle Eastern	European	South Asian	East Asian	North Asian	Native American
Amhara Ethiopia	0.0%	66.2%	33.6%	0.0%	0.1%	0.1%	0.0%	0.1%
Arab Qatar	1.1%	2.0%	90.7%	3.1%	2.6%	0.2%	0.1%	0.2%
Assyrian	0.0%	0.0%	41.4%	58.5%	0.1%	0.0%	0.0%	0.0%
Bedouin Negev Desert	1.1%	2.4%	89.3%	6.7%	0.4%	0.0%	0.1%	0.1%
Cyprus	0.0%	0.0%	44.1%	55.9%	0.0%	0.0%	0.0%	0.0%
Druze Israel-Carmel	0.0%	0.0%	60.8%	38.9%	0.2%	0.0%	0.1%	0.0%
Jewish Azerbaijan	0.0%	0.0%	36.5%	63.0%	0.5%	0.0%	0.0%	0.0%
Jewish Ethiopia	0.0%	71.2%	28.7%	0.0%	0.0%	0.0%	0.1%	0.0%
Jewish Iraq	0.0%	0.0%	57.2%	41.2%	1.7%	0.0%	0.0%	0.0%
Jewish Yemen	0.0%	0.0%	98.8%	1.2%	0.0%	0.0%	0.0%	0.0%
Jordan	0.6%	3.2%	73.0%	21.7%	0.7%	0.3%	0.4%	0.0%
Lebanon	0.0%	0.8%	59.5%	37.7%	1.7%	0.1%	0.0%	0.2%
Oromo Ethiopia	0.0%	92.3%	6.9%	0.3%	0.0%	0.0%	0.3%	0.2%
Palestinian Israel	0.1%	0.9%	78.1%	19.9%	0.4%	0.1%	0.2%	0.2%
Persian Qatar	2.5%	0.8%	40.9%	36.2%	19.2%	0.0%	0.0%	0.3%
Saudi Arabia	0.1%	2.6%	89.6%	5.2%	2.2%	0.1%	0.1%	0.0%
Somalia	0.0%	85.4%	13.2%	0.5%	0.8%	0.0%	0.0%	0.0%
Syria	0.0%	0.0%	63.0%	33.8%	2.8%	0.0%	0.2%	0.2%
Tigray Ethiopia	0.0%	65.1%	34.9%	0.0%	0.0%	0.0%	0.0%	0.0%
Yemen	6.8%	10.1%	76.2%	1.2%	3.8%	0.3%	0.5%	1.0%

8 Continents Admixture: West Asian Populations

Population	Sub-Saharan African	Northeast African	Middle Eastern	European	South Asian	East Asian	North Asian	Native American
Abkhazian	0.0%	0.0%	14.5%	82.6%	2.5%	0.1%	0.0%	0.2%
Adyghe North Caucasus	0.3%	0.0%	5.2%	89.3%	2.8%	0.4%	1.6%	0.4%
Armenian	0.0%	0.0%	29.7%	69.8%	0.4%	0.0%	0.1%	0.0%
Balkar	0.0%	0.0%	4.2%	88.6%	3.3%	1.4%	1.9%	0.5%
Balochi Pakistan	1.1%	0.2%	11.2%	42.8%	44.6%	0.0%	0.0%	0.0%
Brahui Pakistan	1.7%	0.6%	9.1%	47.2%	41.2%	0.0%	0.0%	0.1%
Chechen	0.1%	0.1%	2.3%	93.8%	3.1%	0.0%	0.3%	0.3%
Dargin Urkarah Dagestan	0.1%	0.0%	0.1%	92.6%	6.6%	0.0%	0.1%	0.6%
Georgia Caucasus	0.0%	0.0%	18.5%	80.8%	0.5%	0.0%	0.2%	0.0%
Iran	0.6%	0.1%	35.5%	51.1%	12.4%	0.1%	0.2%	0.0%
Kumyk	0.2%	0.2%	4.9%	85.0%	4.9%	0.9%	3.3%	0.7%
Kurdish	0.0%	0.0%	30.3%	62.3%	7.3%	0.0%	0.0%	0.0%
Lezgin Caucasus	0.2%	0.1%	0.6%	93.3%	5.5%	0.0%	0.0%	0.3%
Makrani Pakistan	3.4%	1.3%	16.5%	39.3%	39.5%	0.0%	0.0%	0.1%
Nogay	0.2%	0.3%	1.4%	72.1%	2.0%	3.8%	19.8%	0.4%
North Ossetia	0.0%	0.2%	5.2%	86.0%	3.7%	1.3%	3.3%	0.2%
Sindhi Pakistan	1.6%	1.6%	2.0%	29.5%	65.2%	0.0%	0.0%	0.0%
Tajik	0.4%	0.2%	0.2%	62.7%	23.4%	1.6%	10.0%	1.4%
Turkey	0.0%	0.0%	24.3%	69.1%	2.6%	1.1%	2.6%	0.3%
Turkmen	0.6%	0.4%	8.5%	55.7%	18.2%	2.9%	12.9%	0.8%

8 Continents Admixture: European Populations (Part 1)

Population	Sub-Saharan African	Northeast African	Middle Eastern	European	South Asian	East Asian	North Asian	Native American
Belarus	0.0%	0.0%	0.0%	99.9%	0.0%	0.0%	0.0%	0.1%
Chuvash Russian Federation	0.0%	0.0%	0.0%	74.5%	0.0%	0.0%	23.2%	2.3%
Cornwall West Britain	0.0%	0.0%	0.0%	99.9%	0.0%	0.0%	0.0%	0.0%
England	0.0%	0.0%	0.0%	99.9%	0.0%	0.0%	0.0%	0.1%
European-American Utah	0.0%	0.0%	0.0%	99.9%	0.0%	0.0%	0.0%	0.1%
Finland	0.0%	0.0%	0.0%	94.8%	0.0%	0.0%	3.3%	1.9%
France	0.0%	0.0%	0.3%	99.6%	0.0%	0.0%	0.0%	0.0%
Germany and Austria	0.0%	0.0%	0.0%	100.0%	0.0%	0.0%	0.0%	0.0%
Lithuania	0.0%	0.0%	0.0%	99.7%	0.0%	0.0%	0.0%	0.3%
Mordvin	0.0%	0.0%	0.0%	94.3%	0.0%	0.0%	3.7%	2.1%
Netherlands	0.0%	0.0%	0.0%	100.0%	0.0%	0.0%	0.0%	0.0%
Orkney Islands Scotland	0.0%	0.0%	0.0%	99.9%	0.0%	0.0%	0.0%	0.0%
Poland	0.0%	0.0%	0.0%	100.0%	0.0%	0.0%	0.0%	0.0%
Russia General	0.0%	0.0%	0.0%	98.0%	0.0%	0.0%	1.0%	1.0%
Scandinavia	0.0%	0.0%	0.0%	99.7%	0.0%	0.0%	0.0%	0.3%
Slovenia	0.0%	0.0%	0.0%	99.9%	0.0%	0.0%	0.0%	0.1%
Ukraine	0.0%	0.0%	0.0%	99.7%	0.0%	0.0%	0.0%	0.3%
Vologda Northern Russia	0.0%	0.0%	0.0%	93.5%	0.0%	0.2%	4.1%	2.2%
Western Scotland and Ireland	0.0%	0.0%	0.0%	99.6%	0.0%	0.0%	0.0%	0.4%

8 Continents Admixture: European Populations (Part 2)

Population	Sub-Saharan African	Northeast African	Middle Eastern	European	South Asian	East Asian	North Asian	Native American
Andalusia Spain	0.0%	0.0%	9.4%	90.6%	0.0%	0.0%	0.0%	0.0%
Ashkenazi Jewish Europe	0.0%	0.0%	31.2%	68.8%	0.0%	0.0%	0.0%	0.0%
Basque France	0.0%	0.0%	0.2%	99.8%	0.0%	0.0%	0.0%	0.0%
Basque Spain	0.0%	0.0%	0.9%	99.1%	0.0%	0.0%	0.0%	0.0%
Bergamo Italy	0.0%	0.0%	6.3%	93.7%	0.0%	0.0%	0.0%	0.0%
Bulgaria	0.0%	0.0%	2.3%	97.6%	0.0%	0.0%	0.0%	0.0%
Galicia Spain	0.0%	0.1%	6.9%	93.0%	0.0%	0.0%	0.0%	0.0%
Greek (Full Greek Only)	0.0%	0.0%	12.4%	87.6%	0.0%	0.0%	0.0%	0.0%
Hungary	0.0%	0.0%	0.0%	99.8%	0.0%	0.0%	0.0%	0.2%
Italy General	0.0%	0.0%	19.6%	80.4%	0.0%	0.0%	0.0%	0.0%
Jewish Morocco	0.0%	0.0%	51.2%	48.8%	0.0%	0.0%	0.0%	0.0%
Portugal	0.0%	0.8%	9.5%	89.7%	0.0%	0.0%	0.0%	0.0%
Romania	0.0%	0.0%	3.8%	96.1%	0.0%	0.0%	0.0%	0.1%
Sardinia	0.0%	0.0%	25.0%	75.0%	0.0%	0.0%	0.0%	0.0%
Sephardic Jewish Bulgaria	0.0%	0.0%	39.2%	60.8%	0.0%	0.0%	0.0%	0.0%
Sephardic Jewish Turkey	0.0%	0.0%	51.8%	48.2%	0.0%	0.0%	0.0%	0.0%
Southern Italy and Sicily	0.0%	0.0%	29.7%	70.3%	0.0%	0.0%	0.0%	0.0%
Spain	0.1%	0.0%	8.1%	91.8%	0.0%	0.0%	0.0%	0.0%
Tuscany Italy	0.0%	0.0%	15.4%	84.6%	0.0%	0.0%	0.0%	0.0%

8 Continents Admixture: Native American and Latino Populations

Population	Sub-Saharan African	Northeast African	Middle Eastern	European	South Asian	East Asian	North Asian	Native American
Aleut Alaska	0.0%	0.0%	0.0%	65.2%	0.0%	0.0%	23.3%	11.4%
Amerindian Colombia	0.9%	0.0%	0.0%	0.4%	0.0%	0.0%	0.0%	98.7%
Aymara La Paz Bolivia	0.4%	0.2%	2.1%	9.1%	0.2%	0.8%	0.3%	86.9%
Chukchi Russian Federation	0.0%	0.0%	0.0%	8.4%	0.0%	0.0%	77.0%	14.6%
Colombia	6.0%	2.0%	8.5%	56.7%	0.0%	0.3%	0.3%	26.2%
Dominican Republic	35.2%	6.0%	10.3%	41.8%	0.1%	0.1%	0.0%	6.4%
Eastern Greenland	0.0%	0.0%	0.0%	8.6%	0.0%	0.0%	61.1%	30.3%
Ecuador	3.7%	2.4%	4.7%	36.8%	0.0%	1.6%	1.7%	49.1%
Karitiana Brazil	0.0%	0.0%	0.0%	0.0%	0.0%	0.0%	0.0%	100.0%
Maya Mexico	0.6%	0.3%	2.2%	5.3%	1.0%	1.4%	1.6%	87.5%
Mexican-American Los Angeles CA	1.7%	1.5%	8.0%	39.5%	0.1%	1.1%	2.4%	45.7%
Pima Mexico	0.4%	0.0%	0.0%	1.1%	0.2%	1.5%	2.5%	94.4%
Puerto Rico	11.7%	3.2%	14.8%	57.6%	0.0%	0.1%	0.2%	12.3%
Surui Brazil	0.0%	0.0%	0.0%	0.0%	0.0%	0.0%	0.0%	100.0%
Totonac Mexico	0.2%	0.1%	0.1%	1.5%	0.1%	1.3%	2.0%	94.7%
Western Greenland	0.0%	0.0%	0.0%	22.3%	0.0%	0.0%	53.3%	24.3%

8 Continents Admixture: South Asian Populations (Part 1)

Population	Sub-Saharan African	Northeast African	Middle Eastern	European	South Asian	East Asian	North Asian	Native American
Chamar India	0.1%	0.0%	0.0%	0.8%	97.3%	1.5%	0.0%	0.3%
Dalit Tamil Nadu India	0.0%	0.0%	0.0%	0.0%	99.6%	0.4%	0.0%	0.0%
Dharkar India	0.1%	0.0%	0.4%	3.3%	96.0%	0.1%	0.0%	0.0%
Dusadh India	0.0%	0.0%	0.0%	0.0%	99.8%	0.2%	0.0%	0.0%
Ho Bihar India	0.2%	0.0%	0.0%	0.0%	71.9%	27.9%	0.0%	0.0%
Indian Singaporean	0.3%	0.1%	0.4%	7.9%	90.4%	0.7%	0.0%	0.1%
Irula South India	0.1%	0.0%	0.0%	0.0%	99.7%	0.1%	0.0%	0.1%
Kol India	0.2%	0.0%	0.1%	0.2%	96.3%	2.4%	0.5%	0.2%
Madiga Andhra Pradesh India	0.1%	0.0%	0.0%	0.0%	98.2%	1.6%	0.2%	0.0%
Mala Andhra Pradesh India	0.2%	0.0%	0.0%	0.0%	98.5%	1.4%	0.0%	0.0%
North Kannadi India	0.4%	0.0%	0.0%	0.0%	97.5%	2.1%	0.0%	0.0%
Piramalai Kallar India	0.2%	0.0%	0.0%	0.0%	99.6%	0.1%	0.0%	0.1%
Pulliyar India	0.1%	0.0%	0.0%	0.0%	93.3%	6.5%	0.0%	0.0%
Sakilli India	0.3%	0.0%	0.0%	0.0%	99.7%	0.0%	0.0%	0.0%
Velama India	0.1%	0.0%	0.0%	0.0%	99.9%	0.0%	0.0%	0.0%

8 Continents Admixture: South Asian Populations (Part 2)

Population	Sub-Saharan African	Northeast African	Middle Eastern	European	South Asian	East Asian	North Asian	Native American
Arain Punjab Pakistan	0.1%	0.0%	1.0%	29.4%	69.4%	0.0%	0.0%	0.2%
Brahmin Andhra Pradesh India	0.0%	0.0%	0.5%	6.9%	92.1%	0.0%	0.0%	0.5%
Brahmin Tamil Nadu India	0.1%	0.0%	1.1%	9.0%	89.9%	0.0%	0.0%	0.0%
Brahmin Uttar Pradesh India	0.0%	0.0%	0.0%	17.8%	81.9%	0.0%	0.0%	0.2%
Burusho Pakistan	0.1%	0.1%	0.4%	32.5%	61.0%	0.6%	4.1%	1.3%
Gujarat India	0.1%	0.0%	0.6%	7.4%	91.7%	0.0%	0.0%	0.2%
Kalash Pakistan	0.0%	0.0%	0.0%	56.2%	43.1%	0.0%	0.1%	0.5%
Kanjar India	0.2%	0.0%	0.3%	1.0%	98.3%	0.0%	0.0%	0.2%
Kshatriya Uttar Pradesh India	0.1%	0.1%	1.7%	13.4%	84.3%	0.0%	0.1%	0.3%
Muslim Uttar Pradesh India	0.0%	0.0%	0.0%	3.7%	95.8%	0.0%	0.2%	0.3%
Nepal	0.2%	0.1%	0.2%	13.8%	60.1%	17.0%	7.9%	0.6%
Pashtun Pakistan	0.1%	0.0%	0.9%	43.1%	53.9%	0.0%	1.5%	0.3%
Scheduled Caste Uttar Pradesh India	0.0%	0.0%	0.0%	1.2%	98.6%	0.2%	0.0%	0.0%

8 Continents Admixture: East Asian Populations

Population	Sub-Saharan African	Northeast African	Middle Eastern	European	South Asian	East Asian	North Asian	Native American
Chinese Singaporean	0.0%	0.0%	0.0%	0.0%	0.0%	99.6%	0.2%	0.2%
Chinese-American Denver CO	0.0%	0.0%	0.0%	0.0%	0.0%	97.8%	1.9%	0.2%
Dai China	0.0%	0.0%	0.0%	0.0%	0.0%	100.0%	0.0%	0.0%
Daur China	0.0%	0.0%	0.0%	0.0%	0.0%	47.2%	52.8%	0.0%
Han Beijing China	0.0%	0.0%	0.0%	0.0%	0.0%	94.0%	5.7%	0.3%
Han China	0.0%	0.0%	0.0%	0.0%	0.0%	98.7%	1.1%	0.2%
Han Northern China	0.0%	0.0%	0.0%	0.0%	0.0%	90.1%	9.1%	0.8%
Han Southern China	0.0%	0.0%	0.0%	0.0%	0.0%	99.5%	0.3%	0.1%
Hezhen China	0.0%	0.0%	0.0%	0.0%	0.0%	48.3%	51.7%	0.0%
Japan	0.0%	0.0%	0.0%	0.0%	0.0%	83.0%	16.5%	0.5%
Lahu China	0.0%	0.0%	0.0%	0.0%	0.0%	99.5%	0.0%	0.5%
Miao China	0.0%	0.0%	0.0%	0.0%	0.0%	100.0%	0.0%	0.0%
Mongola China	0.0%	0.0%	0.0%	0.0%	0.0%	54.8%	44.9%	0.3%
Monguor China	0.1%	0.0%	0.2%	0.2%	0.0%	77.2%	22.0%	0.2%
She China	0.0%	0.0%	0.0%	0.0%	0.0%	100.0%	0.0%	0.0%
Tujia China	0.0%	0.0%	0.0%	0.0%	0.0%	99.6%	0.3%	0.1%
Vietnam	0.0%	0.0%	0.0%	0.0%	0.0%	100.0%	0.0%	0.0%
Xibo China	0.0%	0.1%	0.3%	0.8%	0.0%	64.9%	33.8%	0.1%
Yi China	0.0%	0.0%	0.0%	0.0%	0.0%	92.6%	6.7%	0.8%

8 Continents Admixture: North Asian Populations

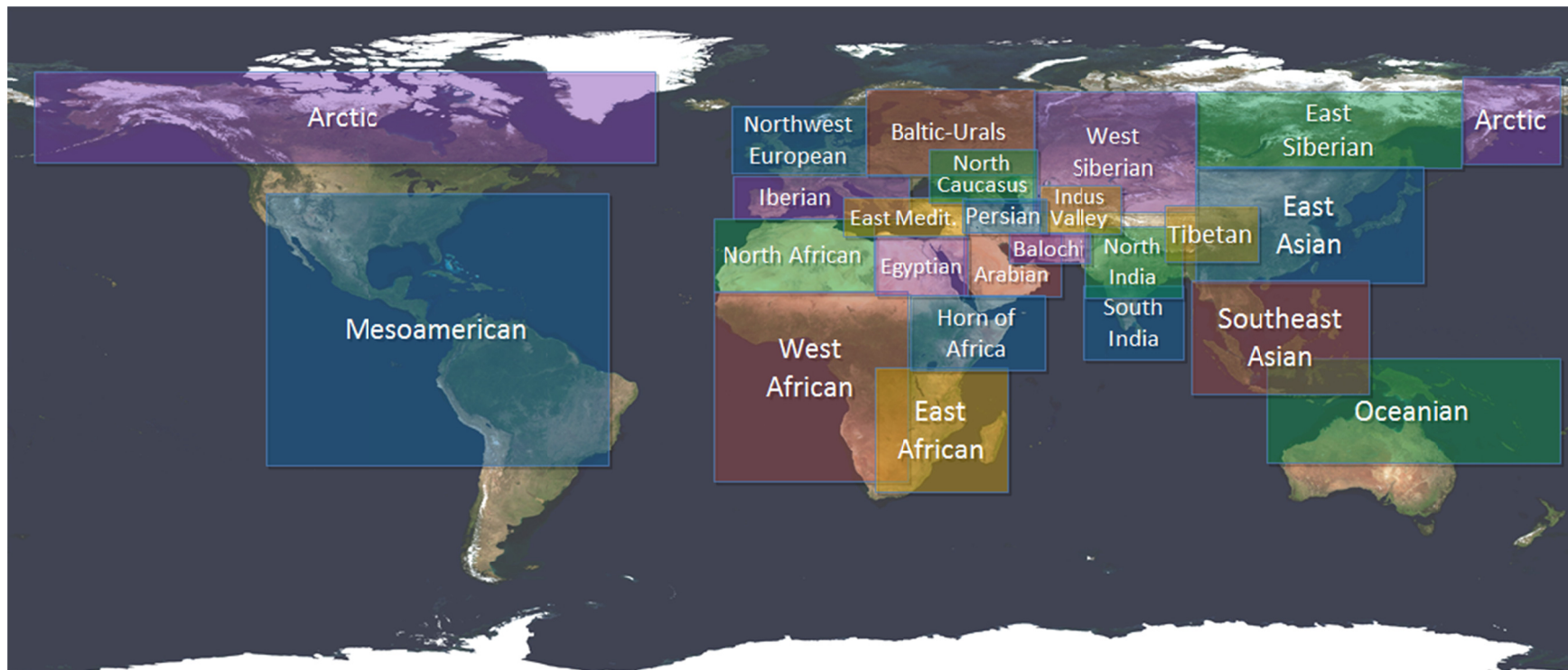
Population	Sub-Saharan African	Northeast African	Middle Eastern	European	South Asian	East Asian	North Asian	Native American
Altai	0.6%	0.1%	0.0%	7.8%	2.8%	3.5%	84.3%	0.9%
Buryat China	0.0%	0.0%	0.0%	0.0%	0.0%	15.9%	84.1%	0.0%
Buryat Russian Federation	0.0%	0.0%	0.0%	0.0%	0.0%	10.2%	89.8%	0.0%
Dolgan	0.0%	0.0%	0.0%	8.5%	0.7%	0.0%	90.7%	0.0%
Evenk	0.0%	0.0%	0.0%	3.6%	0.0%	0.0%	96.3%	0.0%
Hazara Pakistan	0.1%	0.2%	1.6%	25.8%	15.8%	10.7%	45.8%	0.1%
Koryak	0.0%	0.0%	0.0%	5.4%	0.0%	0.0%	88.7%	5.8%
Kyrgyz	0.2%	0.2%	2.0%	14.5%	4.1%	14.2%	64.6%	0.1%
Mongol Mongolia	0.2%	0.1%	1.2%	1.1%	0.2%	14.6%	82.6%	0.0%
Nganasan	0.0%	0.0%	0.0%	0.0%	0.0%	0.0%	100.0%	0.0%
Oroqen China	0.0%	0.0%	0.0%	0.0%	0.0%	26.3%	73.7%	0.0%
Selkup	0.1%	0.0%	0.0%	21.9%	0.0%	0.0%	75.9%	2.1%
Tuvinians	0.0%	0.0%	0.0%	0.0%	0.0%	6.5%	93.3%	0.2%
Uyghur China	0.3%	0.0%	0.6%	30.4%	10.0%	18.0%	40.4%	0.2%
Uzbek Central Asia	0.3%	0.4%	1.7%	38.6%	12.9%	6.5%	38.9%	0.7%
Yakut Siberia	0.0%	0.0%	0.3%	0.9%	0.0%	0.0%	98.8%	0.0%

8 Continents Admixture: Southeast Asian Populations

Population	Sub-Saharan African	Northeast African	Middle Eastern	European	South Asian	East Asian	North Asian	Native American
Burma	0.3%	0.0%	0.1%	0.7%	15.1%	81.8%	1.7%	0.4%
Cambodia	0.8%	0.3%	0.0%	0.1%	5.9%	92.9%	0.0%	0.0%
Iban Borneo	0.4%	0.1%	0.1%	0.0%	0.2%	99.3%	0.0%	0.0%
Khmer Cambodia	0.6%	0.0%	0.2%	0.1%	4.8%	94.3%	0.0%	0.0%
Malay Singaporean	0.4%	0.4%	0.5%	0.3%	8.3%	90.0%	0.0%	0.1%
Melanesian Bougainville	4.1%	0.0%	0.0%	0.0%	39.4%	56.5%	0.0%	0.0%
Naxi China	0.0%	0.0%	0.0%	0.0%	0.0%	92.1%	7.7%	0.2%
Papuan New Guinea	5.6%	0.0%	0.0%	0.0%	58.5%	35.9%	0.0%	0.0%
Samoa	0.7%	0.1%	0.3%	0.0%	4.1%	94.8%	0.0%	0.0%
Thailand	0.7%	0.7%	0.8%	0.3%	14.2%	83.3%	0.0%	0.0%
Tibet	0.1%	0.0%	0.0%	0.0%	0.0%	75.9%	23.6%	0.5%
Tonga	1.4%	0.4%	0.3%	0.0%	4.7%	93.2%	0.0%	0.0%

Admixture Analysis: 24 World Regions

The second group of admixture tables is based on the 24 world regions (illustrated in the map below). Each genetic region can include multiple cultures and languages and cross perceived boundaries between modern countries and ethnic groups (see next page for more detailed descriptions). Admixture results listed below are **average scores for individual members of each population**. However, each person's results will vary based on what genetic material each person has inherited and the genetic variation within each population.

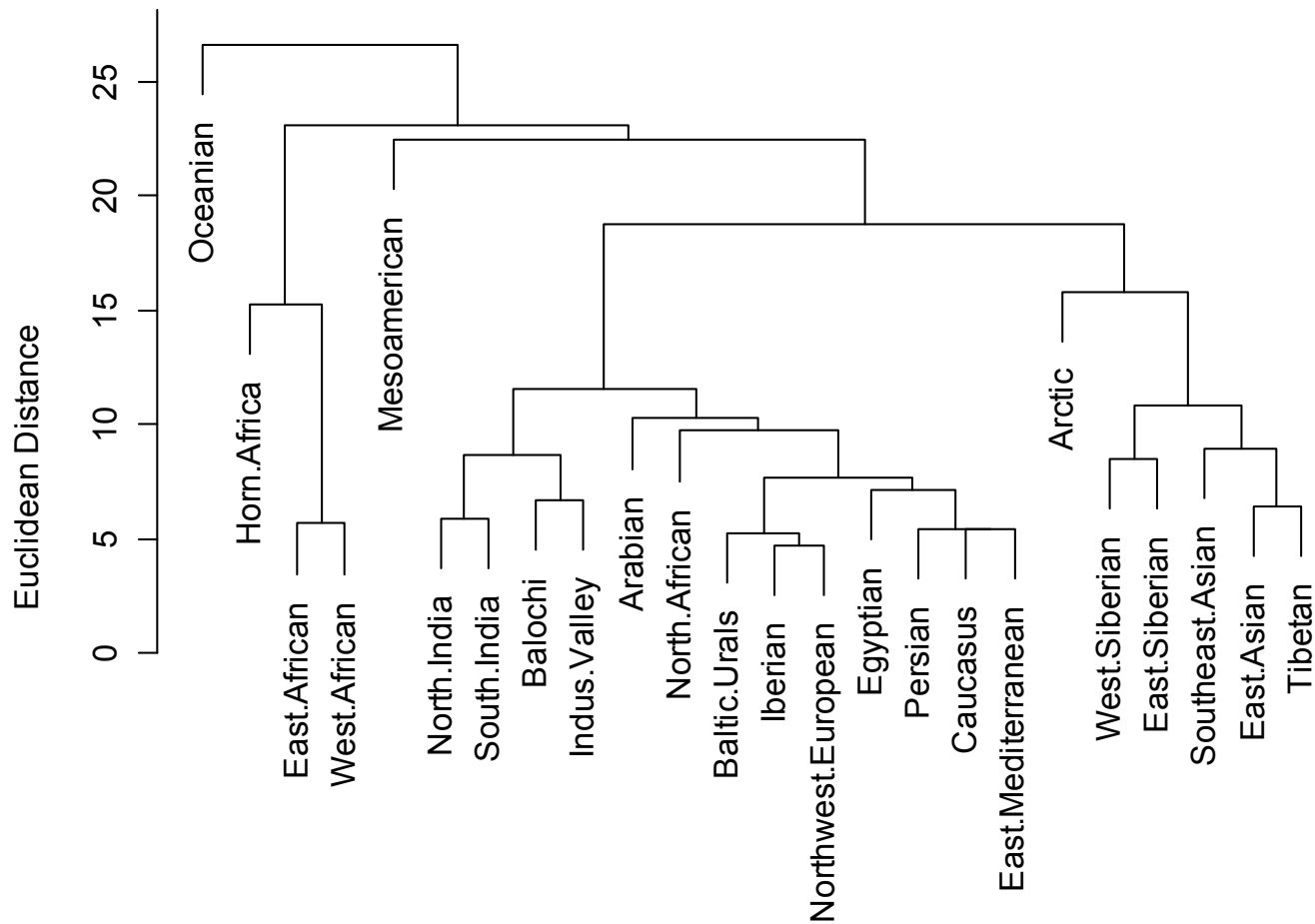


Description of World Regions

World Region	Description of World Region	Other Populations Related to Region
Arabian	The Arabian Peninsula. Gulf Arabs; Bedouin.	Southwest Asia.
Arctic	Far East Siberians; Inuit (Eskimo) populations of North America.	Other North American Indians; Northern Asia.
Balochi	Southwest Asia near the Arabian Sea.	
Baltic-Urals	Northeastern Europe between the Baltic Sea and Ural Mountains.	Central and Northern Europe; Siberia.
East African	Eastern and Southern Africa.	West Africa.
East Asian	China and Japan.	Mainland Southeast Asia.
East Mediterranean	Cyprus; the Levant; Transcaucasus.	Sicily; Italy; West Asia; Balkan Peninsula.
East Siberian	Indigenous East Siberians.	Central Asia; Northeast Asia.
Egyptian	Nile Valley; Western Arabian Peninsula.	Red Sea; Levant.
Horn of Africa	Somalia; Ethiopia; Maasai.	Eastern Africa; Nile Valley.
Iberian	West Mediterranean.	Throughout Continental Europe.
Indus Valley	Indus River Valley; Hindu Kush Mountains.	Central Asia; Nepal; Northern India.
Mesoamerican	Indigenous populations of North, Central and South America.	
North African	The Maghreb and Sahara Desert.	Southwestern Europe.
North Caucasus	Northern Caucasus Mountains.	West Asia.
North India	Northern India.	Brahmins throughout India.
Northwest European	The British Isles; Western Europe; Scandinavia.	Throughout Continental Europe.
Oceanian	Melanesian populations of the Pacific Ocean.	Polynesians.
Persian	Lake Urmia, Zagros and Elburz Mountains.	West Asia.
South India	Southern and Eastern India.	Northern India; Southeast Asia.
Southeast Asian	Malay Archipelago; Polynesia; Mainland Southeast Asia.	Eastern India.
Tibetan	Tibetan Plateau.	Highland East Asia.
West African	Western Africa.	Southern Africa.
West Siberian	Yenisei River; Altai Mountains.	Central Asia; East Siberia.

Neighbor-Joining Tree of World Regions

The neighbor joining tree below illustrates relationships between the 24 world regions based on Euclidean distance. Closely related regions connect towards the bottom of the diagram: for instance, the two most similar regions are the Northwest European and Iberian regions.



24 World Regions Admixture: African Populations (Part 1)

Population	West African	East African	North African	Horn of Africa	Northwest European	Iberian	Egyptian	East Mediterranean	Other
African-American S.W. USA	66.1%	12.1%	2.3%	0.7%	11.5%	2.2%	0.0%	1.2%	3.9%
Bambara West Africa	86.0%	12.2%	0.4%	0.5%	0.0%	0.0%	0.2%	0.0%	0.7%
Bamoun Cameroon	73.8%	25.4%	0.0%	0.2%	0.0%	0.0%	0.0%	0.0%	0.7%
Brong	87.7%	10.8%	0.3%	0.2%	0.0%	0.0%	0.0%	0.0%	1.0%
Dogon West Africa	87.6%	9.7%	1.1%	0.5%	0.0%	0.0%	0.0%	0.0%	1.1%
Fang Cameroon	68.3%	31.2%	0.0%	0.0%	0.0%	0.0%	0.1%	0.0%	0.4%
Fulani Nigeria	50.5%	9.4%	31.3%	5.2%	0.2%	0.3%	1.3%	0.2%	1.7%
Hausa Nigeria	80.2%	17.7%	0.9%	0.3%	0.0%	0.0%	0.0%	0.0%	0.9%
Igbo Nigeria	83.0%	15.5%	0.1%	0.2%	0.0%	0.1%	0.0%	0.0%	1.1%
Kaba Chad	69.0%	28.7%	0.0%	1.4%	0.0%	0.0%	0.0%	0.0%	0.8%
Kongo	69.5%	30.3%	0.0%	0.0%	0.0%	0.0%	0.0%	0.0%	0.2%
Mandenka Senegal	81.6%	14.6%	2.2%	0.7%	0.0%	0.0%	0.0%	0.0%	1.0%
Yoruba Nigeria	88.5%	10.6%	0.0%	0.2%	0.0%	0.0%	0.1%	0.0%	0.6%

24 World Regions Admixture: African Populations (Part 2)

Population	East African	West African	Horn of Africa	Egyptian	Arabian	Balochi	East Medit.	North India	Persian	North African	Other
African Qatar	35.0%	21.3%	12.3%	5.5%	5.1%	5.2%	3.1%	2.4%	2.6%	0.8%	6.8%
Aka Central African Republic	60.2%	39.7%	0.0%	0.0%	0.0%	0.0%	0.0%	0.0%	0.0%	0.0%	0.1%
Alur East-Central Africa	81.7%	14.2%	3.9%	0.0%	0.0%	0.0%	0.0%	0.0%	0.0%	0.0%	0.2%
Bantu Kenya	63.8%	30.2%	3.9%	0.1%	0.1%	0.1%	0.0%	0.1%	0.2%	0.0%	1.5%
Bulala Chad	68.5%	15.7%	15.7%	0.0%	0.0%	0.0%	0.0%	0.0%	0.0%	0.0%	0.1%
Hadza Tanzania	64.2%	13.0%	20.1%	0.0%	0.4%	0.0%	0.0%	0.0%	0.0%	0.0%	2.3%
Hema East-Central Africa	56.1%	18.4%	18.6%	2.3%	1.4%	0.0%	0.0%	0.0%	0.0%	1.6%	1.5%
Khomani San South Africa	92.5%	2.0%	1.3%	0.0%	0.1%	0.2%	0.0%	0.7%	0.1%	0.0%	3.1%
Kung Kalahari Desert	91.0%	8.6%	0.0%	0.0%	0.0%	0.0%	0.0%	0.0%	0.0%	0.0%	0.4%
Luhya Kenya	62.8%	33.0%	2.9%	0.0%	0.3%	0.0%	0.0%	0.0%	0.0%	0.1%	0.8%
Maasai Kenya	53.4%	3.8%	37.9%	1.5%	0.0%	0.0%	0.0%	0.3%	0.0%	0.7%	2.3%
Mada Cameroon	56.7%	38.6%	4.0%	0.0%	0.2%	0.0%	0.0%	0.0%	0.0%	0.0%	0.5%
Mbuti East-Central Africa	95.5%	4.4%	0.0%	0.0%	0.0%	0.0%	0.0%	0.0%	0.0%	0.0%	0.1%
Nguni South Africa	67.8%	32.1%	0.0%	0.0%	0.0%	0.0%	0.0%	0.0%	0.0%	0.0%	0.0%
Pedi South Africa	62.8%	35.7%	0.0%	0.0%	0.3%	0.0%	0.0%	0.0%	0.0%	0.0%	1.2%
San Namibia	99.5%	0.0%	0.0%	0.0%	0.0%	0.0%	0.0%	0.0%	0.0%	0.0%	0.5%
Sandawe Tanzania	58.4%	7.2%	26.4%	2.2%	1.9%	0.0%	0.0%	0.0%	0.0%	2.3%	1.6%
Tswana South Africa	72.2%	26.2%	0.0%	0.0%	0.0%	0.1%	0.0%	0.0%	0.0%	0.0%	1.5%

24 World Regions Admixture: African Populations (Part 3)

Population	North African	Iberian	N.W. European	Egyptian	East Medit.	Arabian	West African	Horn of Africa	East African	Persian	Other
Algeria	55.1%	8.4%	2.2%	9.8%	2.8%	6.2%	5.5%	1.7%	4.6%	0.2%	3.3%
Canary Islands	18.3%	38.0%	30.2%	2.7%	5.8%	1.7%	0.3%	0.2%	0.3%	0.0%	2.5%
Egypt 1	14.7%	2.6%	0.8%	26.7%	21.2%	12.8%	2.4%	11.5%	1.8%	3.9%	1.6%
Egypt 2	17.9%	2.5%	0.8%	29.2%	25.2%	6.7%	1.6%	8.4%	1.4%	4.4%	1.8%
Libya	38.5%	6.1%	0.6%	19.3%	8.3%	14.4%	2.6%	6.2%	2.0%	0.1%	2.0%
Morocco	63.9%	4.1%	0.0%	9.3%	1.6%	4.1%	8.4%	3.8%	2.5%	1.1%	1.2%
Mozabite Algeria-Mzab	84.1%	2.6%	0.6%	1.2%	0.4%	0.4%	5.1%	1.8%	2.3%	0.0%	1.6%
North Morocco	64.3%	11.9%	1.9%	8.1%	3.0%	2.5%	1.1%	3.3%	1.0%	0.0%	2.8%
Saharawi	75.8%	0.0%	0.0%	5.4%	0.1%	5.1%	7.5%	5.2%	0.5%	0.0%	0.4%
South Morocco	63.8%	1.9%	0.5%	2.7%	0.9%	0.9%	19.4%	3.0%	5.4%	0.0%	1.6%
Tunisia	92.4%	1.7%	0.5%	1.3%	2.0%	0.5%	0.0%	0.2%	0.0%	0.4%	0.9%

24 World Regions Admixture: Middle Eastern and Horn of Africa Populations

Population	Horn of Africa	East African	West African	East Medit.	Arabian	Egyptian	Persian	Iberian	North Caucasus	Balochi	Indus Valley	North African	Other
Amhara Ethiopia	50.4%	14.5%	0.3%	0.4%	8.0%	14.6%	1.3%	0.0%	0.0%	0.0%	0.0%	8.0%	2.5%
Arab Qatar	3.0%	0.5%	0.9%	16.2%	42.0%	23.2%	5.5%	1.3%	0.5%	1.2%	0.4%	3.3%	2.0%
Assyrian	0.0%	0.0%	0.0%	51.0%	3.8%	7.6%	16.8%	2.5%	17.0%	1.2%	0.0%	0.0%	0.0%
Bedouin Negev Desert	3.1%	0.4%	0.7%	17.0%	32.1%	25.5%	6.3%	3.8%	2.6%	1.1%	0.0%	6.7%	0.7%
Cyprus	0.2%	0.0%	0.0%	48.2%	5.2%	5.8%	2.5%	20.1%	11.9%	0.2%	0.0%	3.6%	2.3%
Druze Israel-Carmel	0.0%	0.0%	0.0%	43.8%	9.7%	10.0%	8.8%	13.6%	6.8%	2.9%	0.6%	2.9%	0.9%
Jewish Azerbaijan	0.0%	0.0%	0.1%	65.4%	2.8%	3.6%	4.7%	0.4%	18.0%	3.7%	0.1%	0.0%	1.3%
Jewish Ethiopia	53.9%	15.5%	1.2%	0.5%	5.5%	15.5%	0.0%	0.4%	0.0%	0.0%	0.0%	6.4%	1.1%
Jewish Iraq	0.0%	0.0%	0.0%	54.1%	7.8%	10.5%	14.3%	2.3%	4.6%	4.5%	0.5%	0.0%	1.2%
Jewish Yemen	2.5%	0.0%	0.0%	28.3%	25.9%	34.3%	3.5%	3.0%	0.0%	0.0%	0.0%	2.2%	0.2%
Jordan	4.0%	2.8%	0.9%	33.6%	10.3%	14.8%	11.8%	4.4%	4.9%	3.1%	0.5%	7.2%	1.7%
Lebanon	2.8%	0.3%	0.0%	35.7%	4.4%	20.2%	10.0%	9.3%	5.0%	3.2%	0.7%	2.7%	5.8%
Oromo Ethiopia	58.2%	27.0%	1.3%	0.0%	2.1%	4.6%	0.2%	0.0%	0.2%	0.0%	0.3%	4.7%	1.4%
Palestinian Israel	4.0%	0.2%	0.1%	30.9%	11.1%	23.2%	9.6%	7.8%	4.7%	2.0%	0.1%	4.8%	1.5%
Persian Qatar	1.9%	2.1%	1.0%	11.2%	5.1%	7.0%	25.6%	2.2%	13.0%	14.9%	9.4%	1.6%	5.1%
Saudi Arabia	1.4%	1.2%	1.1%	16.8%	42.0%	24.5%	3.5%	0.6%	1.6%	2.3%	0.3%	2.4%	2.2%
Somalia	60.8%	22.8%	0.0%	0.3%	3.3%	4.2%	0.0%	0.0%	0.3%	0.1%	0.0%	5.7%	2.6%
Syria	1.5%	0.1%	0.3%	30.7%	9.2%	19.4%	9.7%	7.8%	10.3%	3.3%	0.8%	2.9%	3.9%
Tigray Ethiopia	52.2%	12.4%	0.6%	0.0%	8.0%	16.4%	0.0%	0.0%	0.0%	0.2%	0.0%	9.1%	1.1%
Yemen	6.0%	7.4%	5.3%	8.5%	18.4%	30.1%	7.7%	2.1%	1.5%	2.1%	2.2%	5.4%	3.2%

24 Regions Admixture: West Asian Populations

Population	North Caucasus	East Medit.	Iberian	Arabian	Egyptian	Balochi	Persian	Indus Valley	North India	South India	Baltic- Urals	N.W. Eur.	East Sib.	West Sib.	Other
Abkhazian	65.8%	19.5%	0.0%	1.0%	1.0%	1.7%	5.6%	0.3%	0.6%	0.1%	1.8%	1.6%	0.0%	0.0%	1.1%
Adyghe	60.4%	10.7%	4.9%	1.1%	0.4%	2.6%	6.7%	0.9%	0.9%	0.0%	6.5%	2.0%	0.7%	0.4%	1.7%
Armenian	28.9%	40.9%	8.2%	3.3%	3.5%	1.8%	11.8%	0.2%	0.1%	0.0%	0.8%	0.0%	0.0%	0.0%	0.4%
Balkar	65.0%	7.7%	1.5%	1.1%	0.0%	0.6%	4.4%	1.9%	0.5%	0.0%	6.5%	7.1%	0.6%	0.2%	2.8%
Balochi Pakistan	3.5%	3.0%	0.3%	1.6%	0.3%	47.8%	10.9%	18.1%	8.2%	3.5%	0.0%	0.6%	0.0%	0.0%	2.1%
Brahui Pakistan	6.6%	2.9%	0.1%	0.9%	0.7%	57.7%	6.8%	13.2%	5.9%	1.4%	0.6%	0.2%	0.1%	0.2%	2.5%
Chechen	66.3%	4.5%	3.4%	0.7%	0.3%	4.9%	5.3%	1.6%	0.0%	0.2%	4.3%	7.5%	0.0%	0.1%	0.9%
Dargin Urkarah Dagestan	67.9%	1.2%	0.2%	0.2%	0.0%	4.4%	5.2%	4.8%	1.1%	0.0%	4.4%	10.0%	0.0%	0.0%	0.7%
Georgia Caucasus	61.3%	24.5%	1.9%	1.4%	1.3%	0.8%	6.9%	0.2%	0.0%	0.0%	0.8%	0.6%	0.0%	0.0%	0.3%
Iran	17.9%	22.3%	2.1%	6.6%	4.7%	12.4%	22.0%	4.7%	1.8%	0.4%	0.0%	1.2%	0.0%	0.0%	3.9%
Kumyk	54.3%	6.1%	4.7%	1.5%	1.4%	2.8%	9.4%	4.5%	0.5%	0.2%	5.1%	4.8%	0.8%	1.5%	2.6%
Kurdish	17.6%	20.6%	2.4%	3.4%	4.4%	7.2%	39.5%	2.2%	0.2%	0.0%	0.3%	1.6%	0.0%	0.0%	0.7%
Lezgin Caucasus	59.3%	3.7%	0.8%	0.1%	0.1%	3.8%	12.7%	5.1%	0.2%	0.0%	8.7%	5.0%	0.0%	0.0%	0.4%
Makrani Pakistan	4.2%	4.0%	0.0%	0.7%	1.5%	46.2%	12.9%	13.2%	8.8%	0.5%	0.3%	0.1%	0.0%	0.0%	7.6%
Nogay	39.6%	6.0%	5.8%	1.1%	1.6%	2.1%	2.8%	2.0%	0.1%	0.7%	10.1%	4.2%	9.1%	7.8%	7.0%
North Ossetia	72.6%	9.0%	2.0%	0.7%	0.6%	2.8%	3.9%	0.1%	0.0%	0.5%	1.8%	0.9%	0.9%	0.9%	3.3%
Sindhi Pakistan	4.5%	0.4%	0.3%	0.0%	0.2%	23.8%	5.8%	29.7%	22.8%	6.6%	1.3%	0.2%	0.0%	0.0%	4.4%
Tajik	15.3%	4.7%	2.3%	0.2%	0.9%	6.5%	10.9%	27.5%	3.6%	0.0%	7.6%	5.7%	3.2%	6.1%	5.5%
Turkey	25.9%	29.2%	10.6%	2.5%	2.5%	3.8%	16.1%	1.1%	0.3%	0.4%	1.0%	1.4%	1.3%	1.2%	2.6%
Turkmen	11.4%	5.3%	1.8%	1.7%	0.0%	5.1%	32.6%	14.6%	2.5%	0.1%	2.3%	3.0%	6.5%	4.7%	8.2%

24 World Regions Admixture: European Populations (Part 1)

Population	Northwest European	Baltic-Urals	Iberian	North Caucasus	North African	Indus Valley	East Medit.	East Siberian	West Siberian	Arctic	Other
Belarus	24.7%	66.1%	5.5%	1.2%	0.1%	0.0%	1.0%	0.0%	0.0%	0.0%	1.5%
Chuvash Russian Fed.	7.2%	62.1%	1.5%	2.0%	0.0%	1.6%	0.1%	11.8%	6.0%	3.3%	4.3%
Cornwall West Britain	62.1%	12.7%	21.0%	0.9%	0.0%	0.0%	0.4%	0.2%	0.0%	0.1%	2.6%
England	63.2%	13.9%	17.1%	1.3%	0.0%	0.1%	0.1%	0.0%	0.1%	0.2%	4.0%
European-American Utah	56.0%	15.8%	22.7%	0.9%	0.9%	0.0%	0.4%	0.0%	0.2%	0.1%	3.0%
Finland	24.3%	70.1%	0.3%	0.0%	0.0%	0.0%	0.0%	1.7%	0.4%	0.9%	2.4%
France	45.5%	10.3%	35.2%	0.8%	1.9%	0.0%	2.5%	0.0%	0.1%	0.1%	3.5%
Germany and Austria	50.2%	24.7%	20.6%	0.1%	0.5%	0.0%	0.0%	0.0%	0.0%	0.1%	3.8%
Lithuania	21.7%	75.5%	1.5%	0.9%	0.0%	0.0%	0.0%	0.0%	0.0%	0.0%	0.5%
Mordvin	17.3%	67.5%	2.8%	3.5%	0.0%	1.6%	0.1%	0.4%	1.6%	1.2%	4.1%
Netherlands	63.8%	16.7%	14.6%	2.7%	0.0%	0.0%	0.0%	0.0%	0.0%	0.0%	2.2%
Orkney Islands Scotland	71.0%	13.1%	10.2%	1.6%	0.3%	0.5%	0.0%	0.0%	0.0%	0.2%	3.2%
Poland	26.1%	54.9%	15.5%	0.9%	0.4%	0.1%	0.6%	0.0%	0.0%	0.0%	1.5%
Russia General	19.0%	67.6%	4.8%	2.6%	0.0%	0.2%	1.7%	0.1%	1.5%	0.0%	2.4%
Scandinavia	60.8%	27.4%	7.2%	0.8%	0.3%	0.1%	0.3%	0.1%	0.0%	0.2%	2.7%
Slovenia	36.7%	37.1%	19.4%	1.1%	0.3%	0.3%	1.7%	0.0%	0.0%	0.2%	3.3%
Ukraine	21.6%	61.0%	10.9%	2.1%	0.6%	0.3%	0.2%	0.0%	0.0%	0.1%	3.3%
Vologda Northern Russia	18.0%	72.4%	0.5%	0.8%	0.2%	0.7%	0.0%	1.3%	1.9%	0.7%	3.7%
Western Scotland and Ireland	65.2%	14.8%	14.5%	1.8%	0.1%	0.7%	0.3%	0.0%	0.0%	0.2%	2.4%

24 World Regions Admixture: European Populations (Part 2)

Population	Iberian	Northwest European	Baltic-Urals	East Mediterranean	Egyptian	North African	North Caucasus	Arabian	Persian	Other
Andalusia Spain	51.5%	28.6%	3.3%	3.4%	2.5%	6.8%	0.1%	1.8%	1.2%	0.9%
Ashkenazi Jewish Europe	24.9%	10.4%	2.7%	36.3%	9.3%	3.6%	5.4%	3.8%	1.8%	1.9%
Basque France	60.5%	31.4%	3.7%	1.7%	0.2%	1.9%	0.0%	0.2%	0.0%	0.5%
Basque Spain	60.0%	33.1%	2.7%	0.5%	0.3%	2.0%	0.0%	0.5%	0.1%	0.9%
Bergamo Italy	49.1%	27.2%	2.7%	11.5%	1.2%	1.6%	2.5%	2.5%	0.5%	1.3%
Bulgaria	32.9%	18.9%	22.8%	13.0%	1.4%	0.9%	6.1%	2.0%	0.8%	1.2%
Galicia Spain	46.1%	34.8%	4.1%	1.8%	0.8%	9.6%	0.0%	0.8%	1.0%	1.0%
Greek (Full Greek Only)	39.8%	5.0%	15.9%	24.2%	0.0%	4.6%	9.5%	0.8%	0.0%	0.2%
Hungary	20.9%	31.6%	35.9%	3.6%	1.3%	0.2%	3.6%	0.6%	0.9%	1.4%
Italy General	41.2%	14.5%	4.9%	22.1%	6.1%	1.4%	2.7%	1.7%	4.7%	0.7%
Jewish Morocco	29.3%	4.6%	1.5%	28.4%	10.3%	12.9%	0.6%	5.2%	6.1%	1.1%
Portugal	43.3%	33.4%	3.9%	3.8%	0.8%	9.7%	1.6%	1.5%	0.0%	1.9%
Romania	33.5%	16.3%	22.1%	14.5%	1.1%	1.0%	7.2%	1.4%	1.2%	1.6%
Sardinia	79.1%	2.1%	0.0%	7.9%	0.5%	8.8%	0.0%	1.6%	0.0%	0.0%
Sephardic Jewish Bulgaria	28.0%	8.9%	1.7%	35.0%	5.3%	5.6%	2.7%	7.0%	4.8%	1.1%
Sephardic Jewish Turkey	30.2%	0.9%	0.3%	35.5%	14.1%	6.0%	5.0%	4.4%	1.4%	2.1%
Southern Italy and Sicily	33.3%	11.1%	0.2%	30.7%	4.8%	5.5%	7.9%	3.6%	2.2%	0.8%
Spain	51.5%	31.4%	3.2%	2.4%	1.0%	6.0%	0.7%	1.2%	1.0%	1.5%
Tuscany Italy	41.7%	22.4%	2.7%	21.9%	2.1%	2.2%	3.1%	1.8%	1.6%	0.6%

24 World Regions Admixture: Native American and Latino Populations

Population	Meso-american	Arctic	Iberian	N.W. Eur.	Baltic-Urals	West African	East African	East Medit.	Egyptian	North Caucasus	North African	Horn of Africa	East Siber.	Other
Aleut Alaska	7.7%	17.1%	2.3%	17.6%	44.6%	0.0%	0.0%	0.1%	0.0%	0.7%	0.1%	0.0%	2.5%	7.3%
Amerindian Colombia	93.2%	4.4%	0.0%	0.0%	0.0%	0.8%	0.0%	0.0%	0.0%	0.0%	0.3%	0.0%	0.3%	1.0%
Aymara La Paz Bolivia	80.1%	3.5%	4.8%	3.1%	0.7%	0.5%	0.0%	0.5%	0.6%	0.3%	0.9%	0.4%	0.4%	4.0%
Chukchi Russian Fed.	4.6%	71.9%	0.0%	1.9%	7.7%	0.1%	0.0%	0.0%	0.0%	0.2%	0.0%	0.0%	9.9%	3.8%
Colombia	25.6%	0.7%	29.7%	19.3%	4.2%	2.3%	3.0%	4.2%	1.5%	0.9%	4.7%	0.2%	0.1%	3.6%
Dominican Republic	8.3%	0.5%	14.9%	16.0%	4.7%	30.0%	6.7%	2.7%	0.9%	0.7%	8.0%	3.3%	0.1%	3.4%
Eastern Greenland	19.9%	65.9%	0.3%	7.9%	2.7%	0.0%	0.0%	0.0%	0.4%	1.2%	0.0%	0.0%	0.0%	1.7%
Ecuador	48.5%	1.5%	13.8%	10.5%	5.2%	2.9%	0.7%	1.2%	0.9%	1.8%	4.6%	0.8%	1.1%	6.5%
Karitiana Brazil	95.3%	3.9%	0.0%	0.0%	0.0%	0.0%	0.0%	0.0%	0.0%	0.0%	0.0%	0.0%	0.6%	0.3%
Maya Mexico	86.4%	2.1%	2.0%	0.4%	0.3%	0.4%	0.1%	0.0%	0.7%	1.1%	0.7%	0.4%	0.8%	4.7%
Mexican-American CA	51.6%	2.5%	13.3%	8.5%	3.9%	1.4%	0.7%	2.4%	1.7%	1.1%	4.4%	0.8%	1.4%	6.2%
Pima Mexico	98.0%	0.9%	0.0%	0.4%	0.0%	0.0%	0.1%	0.0%	0.0%	0.0%	0.0%	0.0%	0.0%	0.7%
Puerto Rico	10.6%	0.6%	27.8%	18.6%	3.3%	9.3%	2.3%	5.1%	4.4%	3.3%	7.5%	2.3%	0.0%	4.9%
Surui Brazil	97.0%	2.3%	0.0%	0.0%	0.0%	0.0%	0.0%	0.0%	0.0%	0.0%	0.0%	0.0%	0.2%	0.6%
Totonac Mexico	96.5%	1.6%	0.1%	0.0%	0.1%	0.1%	0.0%	0.0%	0.0%	0.1%	0.1%	0.0%	0.3%	1.0%
Western Greenland	14.8%	53.2%	4.3%	17.5%	3.2%	0.0%	0.1%	0.0%	0.1%	0.5%	0.2%	0.0%	0.3%	5.9%

24 World Regions Admixture: South Asian Populations (Part 1)

Population	South India	North India	Indus Valley	Balochi	Baltic-Urals	Southeast Asian	Tibetan	East Asian	Oceanian	Other
Chamar India	55.8%	35.3%	1.5%	0.0%	1.4%	1.5%	0.8%	0.4%	0.4%	3.0%
Dalit Tamil Nadu India	70.5%	25.7%	0.0%	0.0%	0.0%	0.5%	0.5%	0.2%	1.5%	1.0%
Dharkar India	26.8%	51.1%	7.9%	5.0%	1.1%	1.0%	0.0%	0.1%	0.6%	6.5%
Dusadh India	59.4%	28.2%	3.8%	2.2%	1.4%	1.8%	0.3%	0.3%	0.4%	2.2%
Ho Bihar India	63.3%	4.2%	0.0%	0.0%	0.0%	24.5%	3.5%	2.4%	1.4%	0.7%
Indian Singaporean	33.8%	44.9%	9.5%	4.8%	1.3%	1.0%	0.5%	0.0%	0.8%	3.3%
Irula South India	66.1%	25.7%	0.4%	0.0%	0.0%	1.3%	0.4%	0.1%	1.9%	4.1%
Kol India	42.0%	43.9%	5.2%	1.8%	0.0%	0.3%	2.7%	0.7%	0.5%	3.0%
Madiga Andhra Pradesh India	59.7%	33.5%	0.7%	0.0%	0.0%	1.9%	1.5%	0.8%	0.5%	1.5%
Mala Andhra Pradesh India	63.8%	31.2%	0.1%	0.0%	0.0%	2.0%	0.6%	0.2%	1.2%	1.0%
North Kannadi India	65.2%	23.8%	1.9%	1.3%	0.2%	0.6%	1.8%	0.0%	1.6%	3.5%
Piramalai Kallar India	51.4%	39.5%	3.6%	1.6%	0.0%	0.2%	0.4%	0.6%	0.6%	2.1%
Pulliyar India	89.3%	0.2%	0.0%	0.0%	0.0%	5.8%	0.7%	0.0%	3.2%	0.9%
Sakilli India	67.3%	23.2%	5.1%	1.0%	0.0%	0.0%	0.0%	0.0%	1.3%	2.2%
Velama India	37.3%	50.0%	4.2%	4.8%	0.0%	0.3%	0.2%	0.1%	0.7%	2.4%

24 World Regions Admixture: South Asian Populations (Part 2)

Population	Indus Valley	North India	South India	North Caucasus	Balochi	Persian	Baltic-Urals	N.W. Eur.	Tibetan	East Asian	West Siberian	Other
Arain Punjab Pakistan	34.5%	26.4%	10.8%	4.9%	13.5%	5.7%	0.8%	1.6%	0.0%	0.0%	0.0%	1.7%
Brahmin Andhra Pradesh India	11.4%	53.4%	22.1%	1.6%	5.5%	1.3%	0.9%	0.9%	0.0%	0.0%	0.2%	2.7%
Brahmin Tamil Nadu India	16.8%	45.0%	24.0%	1.5%	5.4%	2.4%	1.0%	0.5%	0.2%	0.2%	0.3%	2.8%
Brahmin Uttar Pradesh India	19.2%	43.2%	18.7%	2.2%	3.9%	3.7%	2.7%	3.6%	0.0%	0.0%	0.0%	2.6%
Burusho Pakistan	57.7%	11.8%	3.8%	5.5%	5.1%	1.0%	2.4%	0.8%	2.3%	0.0%	3.4%	6.2%
Gujarat India	16.4%	53.5%	18.4%	0.9%	4.3%	0.6%	1.1%	1.6%	0.4%	0.0%	0.0%	2.9%
Kalash Pakistan	34.1%	16.8%	0.7%	17.8%	16.5%	5.7%	6.2%	1.4%	0.0%	0.0%	0.1%	0.7%
Kanjar India	11.0%	47.8%	32.0%	0.0%	1.8%	0.0%	1.7%	0.9%	0.5%	0.0%	1.5%	3.0%
Kshatriya Uttar Pradesh India	20.5%	40.1%	22.3%	0.4%	3.7%	1.0%	3.6%	1.7%	0.4%	0.0%	0.0%	6.3%
Muslim Uttar Pradesh India	11.2%	44.0%	33.5%	0.0%	2.9%	1.0%	1.4%	0.8%	0.0%	0.0%	0.6%	4.7%
Nepal	23.5%	20.5%	13.9%	2.3%	2.8%	0.6%	4.1%	0.5%	18.3%	4.9%	3.8%	4.7%
Pashtun Pakistan	33.7%	15.3%	7.4%	14.7%	12.4%	5.4%	2.1%	2.7%	0.0%	0.1%	2.0%	4.1%
Scheduled Caste Uttar Pradesh	11.6%	42.9%	39.5%	1.5%	0.7%	0.0%	0.0%	1.0%	0.9%	0.3%	0.0%	1.7%

24 World Regions Admixture: East Asian Populations

Population	East Asian	Tibetan	Southeast Asian	East Siberian	West Siberian	Arctic	Other
Chinese Singaporean	86.6%	2.2%	10.8%	0.1%	0.0%	0.0%	0.3%
Chinese-American Denver CO	83.5%	8.8%	7.5%	0.0%	0.0%	0.1%	0.1%
Dai China	62.3%	0.0%	37.6%	0.0%	0.0%	0.0%	0.0%
Daur China	46.4%	7.2%	0.0%	44.0%	0.6%	1.5%	0.4%
Han Beijing China	81.5%	12.2%	4.2%	1.5%	0.0%	0.2%	0.4%
Han China	85.2%	4.8%	9.2%	0.2%	0.0%	0.1%	0.4%
Han Northern China	72.3%	20.2%	0.0%	4.7%	0.4%	0.4%	2.0%
Han Southern China	84.5%	5.2%	9.8%	0.0%	0.0%	0.1%	0.4%
Hezhen China	45.9%	7.8%	0.0%	42.3%	0.2%	3.5%	0.3%
Japan	83.0%	3.4%	0.1%	10.4%	0.0%	1.8%	1.3%
Lahu China	62.0%	14.6%	22.4%	0.0%	0.0%	0.0%	1.0%
Miao China	80.7%	6.8%	12.0%	0.0%	0.0%	0.0%	0.4%
Mongola China	48.4%	10.6%	0.1%	32.8%	3.8%	1.8%	2.5%
Monguor China	47.1%	35.8%	0.0%	9.8%	3.1%	0.2%	3.9%
She China	89.5%	2.5%	7.6%	0.0%	0.0%	0.0%	0.3%
Tujia China	80.7%	11.6%	7.0%	0.2%	0.0%	0.0%	0.5%
Vietnam	66.4%	0.5%	32.9%	0.0%	0.0%	0.0%	0.1%
Xibo China	54.9%	12.2%	1.0%	25.0%	2.5%	1.0%	3.5%
Yi China	42.3%	52.6%	2.0%	1.5%	0.2%	0.9%	0.5%

24 World Regions Admixture: North Asian Populations

Population	East Siberian	Arctic	East Asian	Tibetan	West Siberian	Baltic-Urals	N.W. Eur.	Iberian	North Caucasus	Indus Valley	North India	Persian	Balochi	Other
Altai	41.3%	2.8%	6.2%	2.7%	34.5%	0.3%	3.2%	0.2%	1.4%	2.7%	0.4%	0.0%	0.6%	3.8%
Buryat China	62.1%	1.7%	14.9%	7.2%	12.0%	0.0%	0.0%	0.0%	0.1%	0.0%	0.0%	0.0%	0.0%	1.9%
Buryat Russian Federation	70.1%	0.6%	10.5%	4.6%	11.8%	0.0%	0.1%	0.1%	0.0%	0.3%	0.0%	0.1%	0.0%	1.7%
Dolgan	77.3%	3.8%	0.0%	0.0%	0.7%	10.5%	1.2%	0.7%	1.3%	0.0%	0.0%	0.5%	0.0%	3.9%
Evenk	93.3%	1.9%	0.0%	0.0%	0.0%	2.7%	1.1%	0.0%	0.0%	0.0%	0.0%	0.3%	0.2%	0.5%
Hazara Pakistan	15.4%	0.4%	7.5%	5.1%	31.2%	1.4%	1.4%	0.8%	7.4%	10.3%	2.9%	5.6%	4.0%	6.5%
Koryak	11.6%	80.5%	0.8%	0.0%	0.1%	4.3%	1.8%	0.0%	0.0%	0.0%	0.0%	0.0%	0.0%	0.8%
Kyrgyz	29.9%	1.5%	15.7%	6.5%	24.7%	3.2%	2.4%	0.2%	5.8%	2.5%	1.2%	0.5%	1.0%	4.9%
Mongol Mongolia	46.5%	2.2%	14.9%	8.0%	20.3%	1.9%	1.7%	0.3%	0.0%	0.0%	0.3%	0.6%	0.0%	3.2%
Nganasan	90.0%	7.6%	0.0%	0.4%	1.2%	0.1%	0.0%	0.0%	0.4%	0.0%	0.0%	0.0%	0.0%	0.4%
Oroqen China	63.7%	4.0%	27.6%	4.4%	0.0%	0.0%	0.0%	0.0%	0.0%	0.0%	0.0%	0.0%	0.0%	0.3%
Selkup	33.1%	9.3%	0.0%	0.0%	34.0%	18.1%	3.0%	0.0%	0.0%	0.0%	0.0%	0.0%	0.0%	2.5%
Tuvinians	62.8%	2.6%	7.3%	5.0%	19.3%	0.4%	0.3%	0.0%	0.0%	0.0%	0.0%	0.0%	0.0%	2.2%
Uyghur China	16.2%	1.2%	15.9%	9.8%	11.7%	6.8%	3.9%	1.7%	9.0%	9.5%	3.9%	2.1%	2.8%	5.5%
Uzbek Central Asia	14.5%	2.5%	6.7%	4.7%	18.2%	6.7%	4.6%	3.5%	11.0%	8.6%	4.2%	4.7%	4.0%	6.0%
Yakut Siberia	92.6%	1.7%	0.2%	0.3%	1.7%	0.8%	0.1%	0.2%	0.2%	0.1%	0.0%	0.2%	0.5%	1.4%

24 World Regions Admixture: Southeast Asian Populations

Population	Southeast Asian	Oceanian	Tibetan	East Asian	East Siberian	West Siberian	South India	North India	Indus Valley	Other
Burma	17.9%	0.1%	39.5%	24.9%	0.6%	0.3%	7.6%	5.6%	1.1%	2.4%
Cambodia	56.3%	0.1%	6.2%	31.0%	0.0%	0.0%	2.5%	0.9%	1.0%	2.0%
Iban Borneo	84.4%	0.0%	0.0%	15.4%	0.0%	0.0%	0.0%	0.0%	0.0%	0.2%
Khmer Cambodia	47.1%	0.0%	5.7%	40.9%	0.0%	0.0%	4.2%	0.5%	0.0%	1.5%
Malay Singaporean	64.0%	0.3%	1.5%	25.8%	0.1%	0.0%	2.4%	3.5%	0.1%	2.5%
Melanesian Bougainville	16.2%	79.0%	0.3%	0.5%	0.5%	0.1%	0.6%	0.1%	0.0%	2.7%
Naxi China	0.4%	0.5%	63.4%	34.1%	0.1%	0.0%	0.2%	0.0%	0.0%	1.2%
Papuan New Guinea	1.4%	98.2%	0.0%	0.0%	0.0%	0.0%	0.0%	0.0%	0.0%	0.3%
Samoa	87.2%	12.7%	0.0%	0.0%	0.0%	0.0%	0.0%	0.0%	0.0%	0.0%
Thailand	55.9%	0.0%	5.4%	21.1%	0.3%	0.0%	5.3%	7.4%	1.1%	3.4%
Tibet	0.0%	0.6%	75.5%	11.8%	9.6%	1.0%	0.0%	0.0%	0.0%	1.5%
Tonga	81.7%	18.0%	0.0%	0.0%	0.0%	0.0%	0.0%	0.0%	0.0%	0.3%