

HOW TO GET HERE

The UW Seattle campus is four miles north of downtown Seattle. Seattle and the UW are easily reached by car, bus (transit.metrokc.gov), plane, including seaplanes (kenmoreair.com), Amtrak train and ferry (wsdot.wa.gov/ferries).

SEA-TAC AIRPORT (portseattle.org/seatac/ground) 20 mi. south of UW Seattle (30-60 min.) Rental cars, airport shuttles, taxis, towncars and limos are available. Take the Link Light Rail train from the airport to the Westlake Center tunnel stop in downtown Seattle. Transfer to the 71, 72, or 73 bus. Or drive north on I-5 to exit 169 (NE 45th St.)

DOWNTOWN TO UW Take Metro buses 70, 71, 72, 73 or drive north on I-5 to exit 169.

DRIVE I-5 to Exit 169 to NE 45th St. Right on 15th Ave NE or Memorial Way.

DRIVING FROM THE EAST Hwy 520 or I-90 west to I-5 North. Exit 169

PARKING Garage at 15th Ave NE & NE 41st St. and lots near 17th Ave NE. Stop at a gatehouse before parking. \$15/day or \$10 after 5PM (\$5 after 5PM in surface lots). Hospital/UWMC use the Triangle Parking Garage NE Pacific Place (underground access to the hospital.)

HUSKY SPORTS See www.gohuskies.com/transportation.

WALK, BICYCLE Use the Burke-Gilman Trail and other street routes.

PUBLIC TRANSIT Over 60 buses serve the UW from around the region.

AMTRAK TRAINS Use the King Street Station downtown (amtrak.com)

GREYHOUND BUSES 8th Ave and Stewart St (greyhound.com)

GPS/ONLINE MAPPING Central campus: 1410 NE Campus Parkway, Husky Stadium area: 3870 Montake Blvd NE, UW Medical Center: 1959 NE Pacific St.

UW BOTHELL North I-5/Hwy 405

UW TACOMA South I-5 Downtown Tacoma



DAVID FOSBERG



Seattle...

...where bike messengers share elevators with world-renowned researchers, and fishermen seated next to surgeons enjoy steaming bowls of clam chowder.

From jet engines to espresso machines to rock bands, distinctively Pacific Northwest sights and sounds are all around. Your visit may include watching an orca whale blow as it surfaces, hearing the roar of sports fans when the home team scores, or rejuvenating in the near silence and emerald greenness of a hike into the Olympic rainforest. To see as much as possible all at once, visit the Space Needle's observation deck for a 360-degree view of the city and of arriving and departing ferries and memorable sunsets. From the region's volcanic Cascade mountains to beaches and busy waterways, Seattle offers an unmatched wealth of al fresco activities in and near the city.

visitseattle.org 206.461.5840

Bring Your Next Conference to the UW

From June to September, Conference Services welcomes more than 11,000 guests to the UW Seattle campus, and offers overnight accommodations, dining facilities and meeting areas ideal for workshops, conferences, youth camps and other programs affiliated with the University of Washington. We invite you to join us and discover campus living.

For more information and details about our Visiting Personnel, Visiting Student and general conference programs, contact Conference Services / Housing & Food Services. 206.543.7636, confhous@uw.edu

hfs.washington.edu/conferences 206.543.7636

Need a room or campus outdoor space for a wedding or event? Contact the Office of Provost Special Programs at 206.543.9233.

UW ARTS EXPERIENCE



Discover Arts UW

From the stage to the digital studio to the gallery, the arts at the UW will capture your imagination and awaken your muse.

Come see what's going on!

Center For Digital Arts and Experimental Media (DX Arts)

Dance Program

Jacob Lawrence Gallery

Meany Hall for the Performing Arts

School Of Art

School Of Drama

School Of Music

UW World Series

artsuw.org



The Burke Museum of Natural History and Culture

The Northwest's largest cultural and natural history museum—home to the State's largest collection of Native American baskets and over 5 million objects representing Northwest cultures and the natural history of Washington State. Open Daily.

burkemuseum.org 206-543-5590

Henry Art Gallery

Experience powerful artistic invention! The Henry Art Gallery engages diverse audiences and serves as a catalyst for the creation of new work that inspires and challenges. Exhibitions, collections, and public programs stimulate research and teaching at the University of Washington by providing a creative wellspring for artists and revealing a record of modern artistic inquiry. Open Wednesday through Sunday.

henryart.org/visit.htm 206-543-2280



VISITORS GUIDE



uw.edu/visit



WELCOME TO TOMORROW’S UNIVERSITY TODAY

Founded in 1861, the University of Washington is today a leader in both innovative research and liberal arts. UW offers all students opportunities to choose studies based on their own goals and on the changing realities of society. Course material features integrated digital technologies which allows more flexible learning in classrooms and online, and students may choose from more than 165 majors in 79 departments. Today’s students are working on new technologies and ideas that create positive change for themselves and for others within and beyond our borders. Our goal is to create leaders who know how to successfully shape a new future — a future that balances sustainable realities with a healthy economy for communities no matter where they are in the world.

The University of Washington campus in Seattle is renowned for its beautiful architecture and landscaping, and for its easy access to public transit, the arts and city amenities, and outdoor recreation. Nearby, UW Tacoma and UW Bothell campuses focus on excellence in teaching, learning and research. The University meets the educational needs of a diverse student population, including lifelong learners, while ensuring that public higher education is both accessible and affordable.

Huskies are PURPLE and GOLD, and GREEN! We are proud of our successes in PAC12 and NCAA sports, at the Olympics, and in academia — from two Rhodes Scholars at the same time to 14 Olympic medals (two gold) at the Summer Olympics in 2012. We are also recognized for our Green initiatives, from LEED buildings and renovations, to recycling and composting, to our student farm. We are successful students, athletes and community leaders, and we are leading the way to a better tomorrow, today.



CONTACTS

Seattle Campus Operator
206-543-2100 uw.edu/home/peopledir

Information & Visitors Center (Seattle Campus)
206-543-9198 uwvic@uw.edu

Parking Information – Commuter Services
206-685-1543 ucommute@uw.edu

UW Bothell uwvb.edu
425-352-5000 info@uwvb.edu

UW Tacoma tacoma.uw.edu
253-692-4000 tacoma.uw.edu/contact

UW Medical Center Operator/Switchboard
206-598-3300 uwmedicine.org

UW Police 911 (for immediate police response)
206-685-UWPD (8973) [non-emergency]
uwpolice@uw.edu

TICKETS/EVENTS/THINGS TO DO

UW Events
uw.edu/discover/visit/uw-events

Alumni Association uw.edu/alumni
206-543-0540 uwalumni@uw.edu

Arts Ticket Office www.artsci.washington.edu/artsuw
ticket@uw.edu NE 41st St & Brooklyn Ave NE 206-543-4880

Burke Museum of Natural History and Culture
206-543-5590 burkemuseum.org

Husky Ticket Office gohuskies.com
206-543-2200 tickets@uw.edu

Henry Art Gallery henryart.org
206-543-2280 saoweb@uw.edu

Jacob Lawrence Gallery
art.washington.edu/about/artfacilities/galleries/jake/
206-685-1805 saoweb@uw.edu

University Book Store bookstore.washington.edu
206-634-3400 ubinfo@uw.edu

AROUND CAMPUS

Bay Laurel Catering (HFS)
206-685-2051 catering@uw.edu

Classroom Support Services / Room Rentals
206-543-9900 classrm@uw.edu

Conference Services (HFS)
206-543-7636 confhous@uw.edu

Disabilities Services Office
206-543-6450 uw.edu/admin/dso

Environmental Stewardship & Sustainability Office
green.washington.edu oess@uw.edu

Husky Union Building (HUB) Including Lost & Found
206-543-1447 thehub@uw.edu

Intramural Activities Building (IMA)
206-543-4590 ima@uw.edu

Surplus Store
206-685-1573 surplus@uw.edu

Office of the Provost Special Programs / Rent grounds / space
206-543-9233 sprogram@uw.edu

Waterfront Activities Center
206-543-9433 htfront@uw.edu

Women’s Center depts.washington.edu/womenctr
206-685-1090 womens@uw.edu

UW Libraries lib.washington.edu
206-543-0242 lib.washington.edu/about/contact.html

NEWS/PUBLISHING

Radio: KUOW, KEXP, rainydwg.org

The Daily Newspaper
206-543-2345 dailyuw.edu

University Marketing
206-616-6851 mktg@uw.edu

UW News uw.edu/news
206-543-2580 uwtoday@uw.edu

University Press Order Line
1-800-537-5487 uwpress@uw.edu

UWTV 1-888-616-UWTV uwtv.org

STUDENTS

Undergraduate Admissions & Campus Tours
Schmitz Hall admit.uw.edu
1410 NE Campus Parkway, Seattle, WA 98195
206-543-9686 admit.washington.edu/Contact

Graduate School
206-685-2630 grad.uw.edu uwgrad@uw.edu

Office of Research
206-616-0804 research@uw.edu

Professional & Continuing Education
206-543-2310 pce.uw.edu

Housing & Food Services (HFS) hfs.washington.edu
206-543-2430 hfsinfo@uw.edu

Pay Tuition (Student Financial Services)
206-543-4694 sfshelp@uw.edu

Registrar registrar.uw.edu
206-543-5378 registra@uw.edu

Veterans Center
206-543-6122 veteran@uw.edu

Campus Safety
206-685-7233 uw.edu/safecampus

GIVE BACK

Give to the UW washington.edu/giving
1-877-UW-GIFTS

UW Combined Fund Drive
206-616-5437 uwcfduw.edu
UW employees donate over \$1.5 million annually to local, national and international charities.



POINTS OF INTEREST

- 1 Information and Visitors Center**
The Visitors Center is located next to the George Washington statue, and on the ground floor of the Odegaard Library. This is where you'll find maps and brochures for the University and for surrounding destinations. Everyone is welcome to use the center.
- 2 Odegaard Library – 1972**
This library contains the Learning Commons, collections, collaborative spaces, computing, research and writing services, and food at the By George Cafe.
- 3 Henry Art Gallery – 1927/1997**
Founded in 1927, the Henry was the first public art museum in the state of Washington. The museum's major renovation and expansion, completed in April 1997, quadrupled the museum's size — from 10,000 square feet to over 40,000 square feet. The increased size allowed for the addition of a 154-seat auditorium, a multi-media gallery, café, and sculpture court.
- 4 Denny Hall – 1895**
Denny is the oldest building on campus with a copper clad belfry that contains the "varsity bell" brought around Cape Horn for the original campus in downtown Seattle. The bell is ceremonially rung at Homecoming every year.
- 5 Burke Museum of Natural History and Culture – 1885, 1962**
The Northwest's largest cultural and natural history museum—home to the State's largest collection of Native American baskets and over 5 million objects representing Northwest cultures and the natural history of Washington State.
- 6 William H. Gates Law School – 2003**
The 196,000 square foot, six-story building is named after William H. Gates, Sr., a 1950 graduate of the UW School of Law and father of the Microsoft co-founder. This building also houses the Gallagher Law Library, which has the largest collection of law publications in the Northwest.
- 7 Foster School of Business – 1961**
Named for Michael G. Foster, founder of the investment firm, Foster and Marshall. Buildings include PACCAR Hall, the new Dempsey Building and Mackenzie Hall.
- 8 The Liberal Arts Quadrangle (the Quad) – 1917-1950**
Featuring gothic architecture, brick pathways and green lawns, the Quad is surrounded by seven buildings that house the arts, humanities and social sciences. It is the primary gathering place on campus, especially when the Yoshino Cherry trees are in bloom each spring. Listen for the sounds of voices and violins flowing out of the Music Building at the east end, and look up near the top of Miller and Savery Halls to see gargoyles gracing the parapets.
- 9 North Campus Residence Halls**
Four residence halls for undergraduates are in this area of campus that offer a variety of living arrangements for students.
- 10 Hall Health Primary Care Center – 1936/1978**
This building is the health care center for students and provides services through its Travelers, Women's, and Immunizations clinics and other programs.
- 11 Husky Union Building (HUB)– 1949/2012**
The HUB's spaces are designed by students for students. It's all here, from study and meeting rooms, ballrooms, billiards, bowling, coffee and restaurants.
- 12 Guggenheim Hall/ Kirsten Wind Tunnel – 1929/1937**
Envisioned as a building that would "assist in making air transportation safe, popular and regularly available" by the original donor, Guggenheim houses the Department of Aeronautics and Astronautics. The wind tunnel is famous for testing the Space Needle, airplanes and countless academic and commercial designs.
- 13 Paul Allen Center for Computer Science and Engineering – 1999/2004 and Electrical Engineering – 2000**
Named for the co-founder of Microsoft, this building has two wings, combining electrical engineering with computer science and engineering. The central atrium soars 6 stories high and features informal team brainstorming areas on every level.
- 14 Rainier Vista and Sylvan Theater/ Columns**
With its inspiring view of Mount Rainier and Drumheller fountain, this area was the site of the 1909 Alaska Yukon Pacific Exposition. See the original 1861 Territorial University's columns in Sylvan Theater just off Stevens Way.
- 15 Drumheller Fountain – 1961**
The centerpiece of Rainier Vista, the multi-stream fountain is at the center of Frosh Pond, named for an early tradition of dunking freshmen. It was also used for log rolling contests.
- 16 Mary Gates Hall – 1928/2000**
This building combines the original Physics building from 1928 with a modern atrium, wired classrooms and laboratories. It houses undergraduate education services and the career center. The building is named for Bill Gates III's mother, Mary Maxwell Gates, '50, who served on the UW Board of Regents for 18 years and was a strong advocate for undergraduate education.

- 17 Cunningham Hall/Women's Center – 1909**
Built for the Alaska-Yukon-Pacific Exposition in 1909 as the Women's Building, it was an important gathering place for suffragists who fought for women's right to vote. Today it continues to serve as a lifelong learning place for girls, women and men. The building is named for renowned photographer and 1907 alum, Imogene Cunningham.
- 18 Central Plaza (Red Square) – 1971**
This large red brick plaza is one of the central gathering places on campus, connecting the performing arts at Meany Hall with Odegaard and Suzzallo libraries, the Henry Art Gallery and the lecture halls in Kane.
- 19 Gerberding Hall – 1949**
The Administration building, housing the President's Office and other administrative offices. Note the stone statues representing fields of study on the parapet. Gerberding's bell tower houses the university's set of eight change ringing bells, the Gordon Stuart Peak Foundation Memorial Bells.
- 20 Suzzallo Library – 1926**
A classic example of American collegiate gothic architecture, the library is renown for its circular grand staircase and expansive reading room, considered one of the most beautiful library rooms in the world.
- 21 Meany Hall – 1974**
The UW's premier performing arts venue, with seating for 1200 in the main theater and a smaller performance hall that seats 300. Home to the Dance Department.
- 22 Architecture Hall – 1908**
Built in 1908 as the art museum for the Alaska-Yukon-Pacific Exposition. It now contains Construction Management and Architecture Studios.
- 23 Molecular Engineering and Sciences Building – 2012**
This building is home to the Molecular Engineering & Sciences Institute, the Center for Nanotechnology, and the Nanotech User Facility, and features state-of-the-art labs, innovative common spaces that encourage collaboration, and cutting-edge green features.
- 24 UW Medical Center – 1948- 2012**
One of the highest ranked medical centers in America, UWMC was also the first hospital in the country to achieve Magnet Hospital certification, the highest honor awarded by the American Nurses Credentialing Center.
- 25 West Campus Residence Halls**
Student housing located west of 15th Ave NE includes new buildings and offers eclectic dining options, parking and convenient access to public transportation.
- 26 UW Tower Complex**
The 22-story UW Tower on the corner of NE 45th St and Brooklyn Ave NE and its adjacent buildings. Tenants include UW administrative offices, UW Press and UW Professional and Continuing Education.
- 27 University Book Store**
The University Book Store opened January 10, 1900 in a cloak room next to the University President's office in Denny Hall. Now located on "The Ave" at NE 43rd St. with additional locations in the HUB and the South Campus Center, downtown Seattle, Bellevue, Tacoma, Bothell, Mill Creek and Renton.
- West of 15th**
New UW residence halls, the reconstruction of the Ethnic Cultural Center and other changes are adding vitality to the area just west of 15th Ave NE.
hfs.washington.edu/housing
- UW Botanic Gardens 206-543-8616**
More than 320 acres of gardens and woodlands — including one of the oldest arboreta on this side of the Mississippi — and one of the West Coast's largest horticulture centers and libraries. The botanic gardens include the Washington Park Arboretum, Center for Urban Horticulture, Elisabeth C. Miller Library, Otis Hyde Herbarium and Union Bay Natural Area.
- U District udistrictchamber.org**
Located in the heart of Seattle, the UW is part of this vibrant urban neighborhood. University Way, known as "The Ave," is at the center. Ethnic foods, specialty and bike shops and the local drugstore and supermarket are an easy walk from campus. There's a farmers market year-round on Saturdays, and movie theaters with both mainstream and independent films.
- The Burke-Gilman Trail burkegilmantrail.org**
Originally the Burlington Northern Railroad, the trail borders campus and the neighborhood on the south and east and is a great way to get just about anywhere by bike or foot.

The University of Washington is committed to providing access, equal opportunity and reasonable accommodation in its services, programs, activities, education and employment for individuals with disabilities. To request a disability accommodation contact the Disability Services Office at least ten days in advance at: (206) 543-6450/V, (206) 543-6452/TTY, (206) 685-7264 (FAX), or dso@uw.edu.

♻️ RECYCLED, 10,000 CT., JANUARY 2013



History, Vision and Future

OUR HISTORY Founded in 1861, the University of Washington is one of the oldest public institutions of higher education on the West Coast and is one of the preeminent research universities in the world. The Seattle campus was also the site of the 1909 Alaska Yukon Pacific Exposition with its Olmsted Brothers landscape design.

OUR VISION We discover timely solutions to the world's most complex problems and enrich people's lives throughout our community, the state of Washington, the nation and the world. Discovery is at the heart of our university.

washington.edu/discover

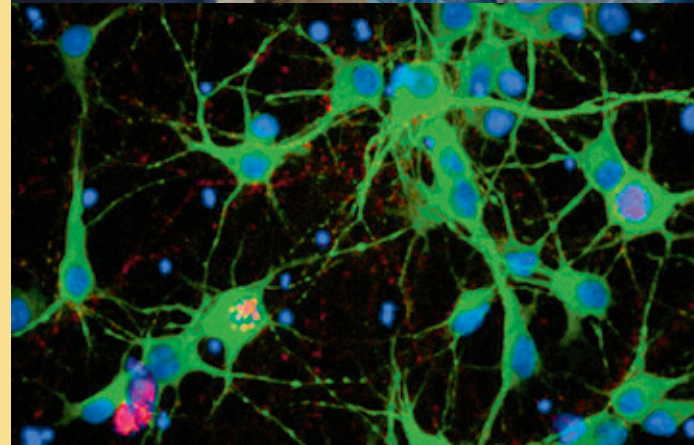
OUR FUTURE The welfare of the Earth and its inhabitants is a defining theme of the 21st century. Higher education has a significant role to play as the world faces these challenges. The UW addresses these problems head on through classes and programs in the College of the Environment, that integrates the natural sciences, public policy, technology, business, global health and the built environment in new ways.

A BEAUTIFUL CAMPUS The UW is heralded as one of the most beautiful campuses in the world. Take time to stroll the gardens, get out on the water, and enjoy the mountain and waterfront views, from the Center for Urban Horticulture to the Rainier Vista.

depts.washington.edu/uwbg

"No finer site for a University can be imagined than the present campus of our Alma Mater. Bounded on the one side by far reaching Lake Washington, on the other by Lake Union, it lies like a gem in a setting of silvery waters..."

PACIFIC WAVE—
THE UW STUDENT NEWSPAPER, MAY 1896



UW Medicine

Advancing health care through discovery, education and outstanding patient care, UW Medicine trains health professionals and medical scientists, researches health and disease, and provides primary and specialty care to patients across the Pacific Northwest and the five-state WWAMI region of Washington, Wyoming, Alaska, Montana and Idaho.

UW School of Medicine has been ranked #1 in the nation in primary-care training for 19 years by US News &World Report. It is the top public institution for receipt of biomedical research funding from the National Institutes of Health (NIH) and #2 among all institutions for NIH funding, public and private.

Now in its 42nd year, the WWAMI program is widely considered the best academic model for the training and placing of physicians in rural and underserved communities, for advancing regional excellence in medical education, and for meeting physician workforce needs. UW Medicine's faculty, volunteers and part-time faculty include three living Nobel Prize Winners (five in our history), 32 National Academy of Sciences members, 35 Institute of Medicine members, and 13 Howard Hughes Medical Institute Investigators.

uwmedicine.washington.edu

UW Research

The University of Washington is ranked number one among public universities nationally to receive federal research and training funds, and since 1974 has been in the top five for public and private universities. In the last twenty years, we have tripled our awards; topping \$1.5 billion dollars in 2011. Our rankings are exemplary and establish us a world leader and a premier university that fosters collaboration and innovation. One of the most influential international ranking reports in the world published by the Institute of Higher Education at China's Shanghai Jiao Tong University, has placed the UW 16 among the world's top universities (a ranking held since 2007) and 14 nationally.

uw.edu/research



Study Hard, Play Hard

STUDY HARD At the UW, students enjoy a wide variety of learning opportunities: Choosing from almost 150 majors, student government, over 700 clubs and organizations, and many different research opportunities.

From challenging courses here in Seattle, to the possibility of studying abroad, the UW has the resources to help students get what they want from one of the nation's top universities.

PLAY HARD When students need a break from all that studying, they have choices. A state-of-the-art fitness center, the Intramural Activities building (IMA), features everything from a climbing wall to cardio and weight training machines, gyms and a pool. And then, there's the waterfront! Sailboats, canoes and rowboats are available for touring around Lake Washington, the wetlands and the Washington Park Arboretum.

depts.washington.edu/ima 206.543.4590

See the Huskies in Action

From Husky football to crew, the Dawgs run and row circles around the competition in 19 intercollegiate sports. Outstanding coaches and some of the most spectacular venues in the country have produced national champions in women's volleyball, softball, women's cross-country and men's crew.

Visit gohuskies.com for more on Husky traditions, including the origin of "Huskies," Husky Spirit Songs, The Wave, and game day tailgating.

gohuskies.com 206.543.2200

