

UCLA

INTERCOLLEGIATE ATHLETICS

ANNUAL REPORT

2009-10



From the Athletic Director's Desk	2
The Year in Pictures	3
Coach John R. Wooden's Life in Pictures	4
Coach John R. Wooden's Memorial Service	5
UCLA's 2009-10 World Champions	6
2009-10 NCAA Champions	7-8
2010 College World Series	9
2009 EagleBank Bowl Game	10
2009-10 Director's Cup	11
Sports Summaries (football and m-basketball)	12
Sports Summaries (w-volleyball, m-soccer and w-soccer)	13
Sports Summaries (w-basketball and m/w-cross country)	14
Sports Summaries (m-water polo, w-gymnastics and w-swimming & diving)	15
Sports Summaries (w-tennis, m-tennis and m-volleyball)	16
Sports Summaries (m-golf, w-golf and w-rowing)	17
Sports Summaries (softball, baseball and w-water polo)	18
Sports Summaries (m/w-track and field)	19
Bruins in the Community	20-21
Academics and Life Skills	22-23
Wooden Academy and S.U.C.C.E.S.S. Program	24
2010 True Blue Celebration	25
Capital Projects Underway	26
2009-10 Financial Summary	27
2009-10 Wooden Athletic Fund (list of donors)	28-36
Bruin Varsity Club	37
Corporate Sponsors	38



Coach John Wooden's den has been recreated in the UCLA Athletics Hall of Fame

About This Annual Report

Writing, editing, and design by Ryan Finney, UCLA Associate Sports Information Director. Additional writing assistance provided by Marc Dellins, Steve Rourke, Rich Bertolucci, Liza David, Danny Harrington, James Ybiernas, Stephanie Sampson and Alex Timiraos. Primary photography by ASUCLA Campus Studio (Don Liebig and Todd Cheney). Photos also provided by Scott Chandler and the NCAA. Special thanks to Dan Guerrero, Leslie Dalziel, Ashley Armstrong, John Jentz, Ric Coy and Dr. Christina Rivera for their assistance.



J.D. Morgan Center Hall of Champions



Dear Bruins:

Welcome to the 2009-10 UCLA Athletics Annual Report. The past year was another busy one for our department and one of change on the national level. As you know, there has been a shift in the collegiate landscape with several schools changing conferences. Right at the end of the school year, the Pac-10, in separate announcements, added Colorado from the Big 12 and Utah from the Mountain West. Beginning in the Fall of 2011, we will be competing in the Pac-12 Conference, a change that should benefit all of the schools in our league.

At UCLA, virtually all of our sport programs enjoyed successful seasons. In April, the women's gymnastics team won its sixth NCAA team championship. In early June, the softball team won its 11th NCAA title. UCLA continues to lead the nation with 106 NCAA team championships.

In 2009-10, UCLA placed fourth nationally in competition for the annual Learfield Sports Directors' Cup. The cup recognizes the school with the best overall sports performance each year and awards points based on finishes in NCAA competition. In addition to winning the two championships, the baseball team reached the championship series of the College World Series for the first time ever and finished second nationally. Our teams also placed second nationally in men's water polo, tied for third in women's soccer (seventh straight College Cup), fifth in women's water polo, tied for fifth in men's soccer and men's tennis, sixth in women's golf, tied for ninth in women's tennis, 12th in women's rowing, 16th in men's golf, tied for 17th in women's basketball and women's volleyball and 19th in women's swimming. UCLA also won three conference titles and two league post-season tournaments.

UCLA also returned to post-season play in football, winning the EagleBank Bowl in Washington DC. That trip was an educational one for our players, most of whom had never been to the nation's capital, and the opportunity for them to visit the National Monuments, tour the Capitol building and see Arlington Cemetery was very rewarding for all involved.

The UCLA family, and the entire nation, suffered a tremendous loss on the evening of June 4, 2010, when John Robert Wooden passed away. Coach was 99 years old and lived a life that should be an example for all of us. Not a day goes by that I don't use something I learned from Coach in my business or private life. His memorial service in Pauley Pavilion a few weeks later was something I will remember for the rest of my life.

And, speaking of Pauley Pavilion, the renovation is underway. As I said last year on this very page, I am convinced, as is our campus leadership, that it is time to

take that next step. Pauley is in need of improvements to selected aspects of its operation and physical structure, most of which are necessitated by its age and need to replace its mechanical, electrical, and plumbing. When completed, the new seating configuration, restrooms, concession capability, concourse space, locker rooms, scoreboard, and student-athlete functions spaces will allow Pauley to stand beam to beam with the finest multi-purpose college venues in the country. On May 11, 2010, we officially broke ground on the project. We will be out of Pauley during the 2011-12 season and will return to "new" Pauley Pavilion in the Fall of 2012.

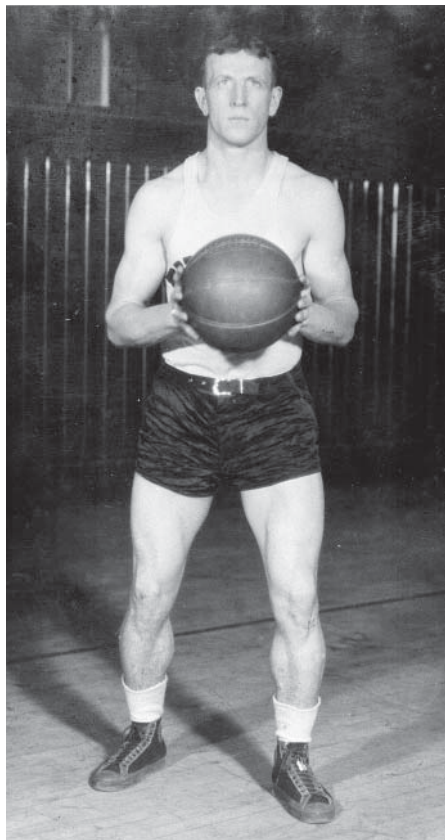
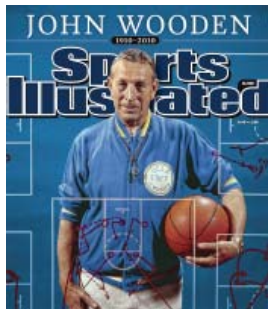
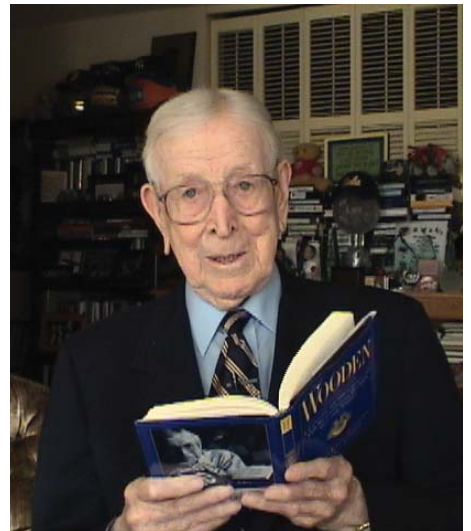
At this time, I want to thank all of you reading this Annual Report for your support of UCLA Athletics. We all love this special University and those of us lucky enough to work in the athletic department could not enjoy the successes we have, both on the field of competition and in the classroom, without the contributions of our loyal fans.

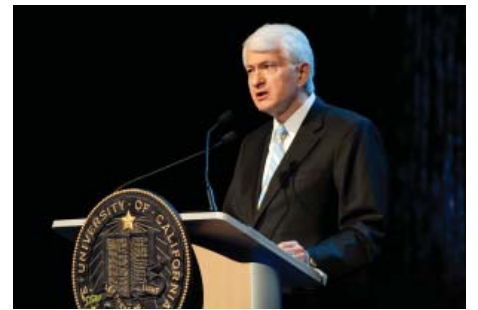
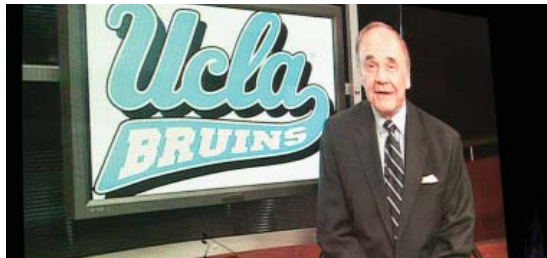
Go Bruins!

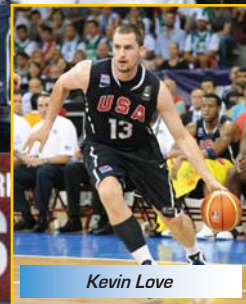
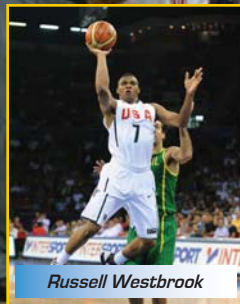
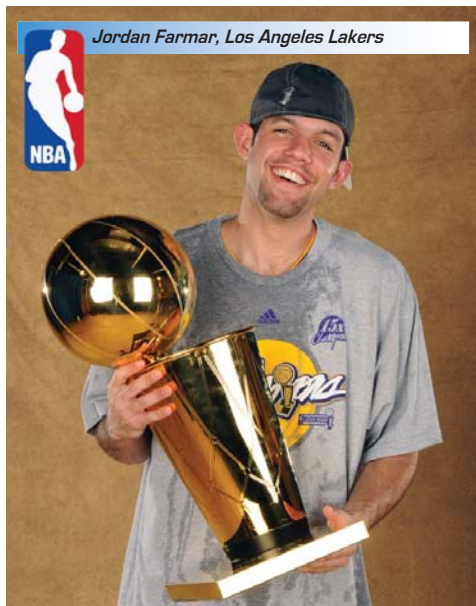
Dan Guerrero











WOMEN'S GYMNASTICS WINS SIXTH NCAA CHAMPIONSHIP

Gainesville, Fla. - Needing to score 49.1 on floor exercise in the final rotation to win the NCAA Championship, UCLA scored 49.55 to easily win the title with a 197.725. The gymnastics championship was UCLA's sixth in school history and its first since 2004. UCLA has now won a national-best 105 NCAA titles.

Oklahoma finished in second place with 197.25. Alabama was third with 197.225, followed by Stanford with 197.1, Florida with 197.0 and Utah with 196.225.

The Bruins had 11 scores of 9.9 or better, including a 9.95 on floor from Elyse Hopfner-Hibbs and a 9.95 on vault from Brittani McCullough. Vanessa Zamarripa's all-around score of 39.625 was the highest of the night, followed by Anna Li's 39.575.

UCLA got off to a great start on vault, scoring 49.475. Monique De La Torre led off with her third-straight career-high 9.85 score. Li followed up with a 9.9. Hopfner-Hibbs recorded a 9.825, and Tauny Frattone scored 9.85. McCullough competed her Yurchenko 1.5 for just the third time collegiately and scored a career-high 9.95. Zamarripa ended the Bruin set with a 9.925, giving UCLA a .05 lead over Oklahoma (49.425) after one rotation. Trailing both teams were Florida (49.125) and Stanford (49.1).

While the Bruins were on a bye in the second rotation, Oklahoma was scoring 49.3 on vault, and Utah matched that number with a 49.3 on bars. Alabama, meanwhile, had three out-of-bounds

deductions on floor and scored 49.1, while Florida overcame a fall in the middle of the order to score a solid 49.2 on beam.

In the third rotation, UCLA scored 49.325 on uneven bars to maintain the lead. Aisha Gerber started things off with a 9.8, and McCullough followed with a 9.85 after sticking her dismount. Monique De La Torre matched McCullough with a 9.85, and Hopfner-Hibbs added a 9.825. Zamarripa and Li gave the Bruins the big scores at the end of the lineup, with each scoring 9.9.

The Bruins finished with a two-rotation score of 98.8, with Oklahoma a close second with 98.725. Alabama earned 49.375 on vault to move into third place with 98.475, followed by Stanford (98.425), Florida (98.325) and Utah (97.725).

The fourth rotation saw the Bruins move to balance beam, known as the make-or-break event. It was all make for UCLA, who hit six routines for 9.8 or better, including a pair of 9.9s from Hopfner-Hibbs and Zamarripa. Li in the leadoff position was perfect on the beam with the only deduction coming on a little side shuffler on her dismount. One judge gave her a 9.95, and she finished with a final score of 9.875. Hopfner-Hibbs had a wobble-free routine on the beam but took a hop back on her dismount, scoring 9.9. Tom delivered another strong routine on the beam with just a hop on the dismount and scored 9.8. Gerber and Zamarripa made sure to stick their dismounts to leave little room for deduction, and they scored 9.85 and 9.9, respectively. Mizuki Sato



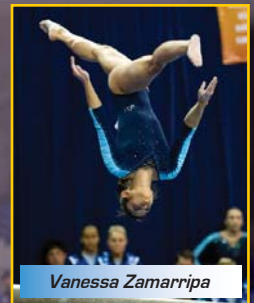
Team champion UCLA also won two event titles as Brittani McCullough (left) won the floor exercise and Vanessa Zamarripa claimed the vault crown.

finished the set with a 9.85, bringing the Bruins' beam score to 49.375 and their three-event total to 148.175, .275 ahead of Alabama and needing 49.1 on floor to pass Oklahoma, who finished with 49.2 on beam for a final total of 197.25.

On floor exercise, Frattone led off with one of her best floor performances of the year, scoring 9.875. After a 9.725 from Tom, Zamarripa and Li each hit 9.9s, leaving it up to McCullough or Hopfner-Hibbs to score 9.7 or better to clinch the title. McCullough had the first attempt and clinched it with a career-high tying 9.925. Hopfner-Hibbs' 9.95 was just icing on the cake and helped bump the Bruins' final floor total to a season-high 49.55 and its team final score to 197.725.

TEAM STANDINGS

Place	Team	Score
1.	UCLA	197.725
2.	Oklahoma	197.250
3.	Alabama	197.225
4.	Stanford	197.100
5.	Florida	197.000
6.	Utah	196.225



Vanessa Zamarripa

SOFTBALL WINS 12TH NATIONAL CHAMPIONSHIP AND 11TH NCAA TITLE

OKLAHOMA CITY, Okla. - The fifth-seeded Bruins blasted four home runs, including a two-run homer by the WCWS Most Outstanding Player Megan Langenfeld, as UCLA took home the school's 12th national championship and 11th NCAA title with a 15-9 victory over #10 Arizona on Tuesday at ASA Hall of Fame Stadium.

Langenfeld went 2-for-3 with two RBI, as the Bruins posted 19 hits. Sophomore Andrea Harrison hit a grand slam, sophomore Samantha Camuso went 2-for-4 with a homer and senior Julie Burney went 3-for-5 with a three-run homer. Camuso and Harrison were both named to the All-Tournament Team.

Senior Kaila Shull and junior Monica Harrison also posted three-hit games, while junior GiOnna DiSalvatore and freshman B.B. Bates had two hits apiece.

Sophomore Aleah Macon (13-1) struck out seven in 4 1/3 innings, giving up six runs, six hits and three walks. Junior Donna Kerr closed out the game, striking out four and allowing three runs, four hits and two walks in 2 2/3 innings.

The Bruins (50-11) scored in the top of the first inning, as Langenfeld set a WCWS record with another long ball. Monica Harrison singled up the middle with one out and Langenfeld hit her team-leading 20th home run of the season to left on a 2-2 pitch to put UCLA up 2-0. It was the fourth homer for Langenfeld in Oklahoma City, which temporarily set a new record

for a single WCWS. The Bruins still had a chance to add on some runs after getting three straight walks to Andrea Harrison, Camuso and sophomore Dani Yudin, but Arizona's Kenzie Fowler retired Burney and Shull to end the inning.

Another home run in the second set another WCWS record to put the Bruins up 6-0. With one out and DiSalvatore at third and Monica Harrison at second, the Wildcats walked Langenfeld intentionally to set the stage for Andrea Harrison, who launched a 1-1 offering over the centerfield wall to extend the lead to a half dozen. The home run was Harrison's 17th of the year and fourth of the WCWS to tie Langenfeld for the most long balls in one trip to Oklahoma City. It also brought Harrison's RBI total to 11, which sets a new WCWS record. The Bruins would re-load the bases on a walk to Yudin and back-to-back singles by Burney and Shull, but Arizona's Sarah Akamine got Bates on a fielder's choice grounder to second for the final out.

The Wildcats (52-14) got on the board in the bottom of the second when Lini Korja hit a 2-1 pitch out to left field to make it 6-1.

The Bruins got the run back in the top of the fourth with a two-out rally. Burney singled to left and came all the way around to score when a diving attempt by Karissa Buchanan in right off the bat of Shull went behind her for a double to make it 7-1.

Arizona got back in it with three in the bottom of the fourth. The Wildcats loaded

the bases on a hit by pitch of K'Lee Arredondo, a walk to Stacie Chambers and a drag bunt single by Brigette Del Ponte. Korja was then hit by a pitch to force in Arredondo to make it 7-2 and a two-run single up the middle by Kristen Arriola cut the deficit to 7-4.

But UCLA broke it open again in the fifth, sending 12 to the plate and scoring seven times. With one out, Langenfeld hit a comebacker off Akamine for a single and was pinch-run for by junior Grace Murray, who moved to second on an illegal pitch and scored when Andrea Harrison reached on an error at second by Arriola to make it 8-4. Camuso followed with a single to left and Yudin singled up the middle, but Harrison would get thrown out at home for the second out of the inning.

Burney added three more to the Bruin run total, hitting her 18th home run of the season to center to make it 11-4. After back-to-back singles to right by Shull and Bates, DiSalvatore doubled to left-center to plate Shull to increase the lead to 12-4. Monica Harrison then doubled to right-center to bring home Bates and DiSalvatore to make the margin 14-4.

The Wildcats put two on the board

in the bottom of the fifth. With one out, Arredondo walked and Chambers homered to left to make it 14-6.

UCLA scored its 15th run in the sixth, as Camuso led off with her 16th homer of the year and eight of the postseason, hitting it out to left on a 1-0 pitch.

In the bottom of the sixth, Chambers hit another two-run homer, this time to center with pinch-runner Becca Tikey aboard to put the score at 15-8.

The Wildcats scored once more in the seventh on an RBI single by Brittany Lastrapes, but Kerr struck out Lauren Schutler to end the game and send the Bruins into a massive celebration.



WCWS Most Outstanding Player Megan Langenfeld



UCLA BASEBALL ADVANCES TO FINALS OF 2010 COLLEGE WORLD SERIES

OMAHA, Neb. - UCLA's College World Series championship hopes were dashed after South Carolina won its first-ever NCAA baseball title with a 2-1, 11-inning victory in front of 24,390 fans at Rosenblatt Stadium. The win was South Carolina's second in the best-of-three series.

The Bruins finished the season 51-17, setting a school record in wins and making their first-ever appearance at the CWS Championship Series. South Carolina finished the year 54-16.

"I'm so proud of our players and our program and the strides we've made," sixth-year UCLA head coach John Savage said. "I told the players that they've reached the pinnacle in college baseball. They've experienced the rigors of the Regionals and Super Regionals and the bracket in playing for the national championship.

"Every player in our locker room now knows what it feels like. We can sit there and be very proud of our entire program. The bar has been raised, and we look to be back as soon as possible. This team can say they're the best team in UCLA history, which has a long and rich tradition. I'm proud of every single person who has been a part of this program."

South Carolina won the game in walk-off fashion, scoring the winning run in the bottom of the 11th inning on an RBI-single to right field by Whit Merrifield off Dan Klein (6-1). Scott Wingo led off

the frame with a walk and moved to second on a passed ball. He advanced to third on a sacrifice bunt and scored on Merrifield's walk-off hit.

Klein (6-1) was tagged with the loss, despite limiting South Carolina to one run and one hit in a season-high 3.1 innings. Klein struck out four batters and walked two.

Left-hander Rob Rasmussen threw six scoreless innings, scattering six hits while recording five strikeouts and issuing four walks.

South Carolina's Matt Price (5-1) earned the victory, tossing 2.2 scoreless innings in relief of four pitchers. Price struck out three and walked one as the Gamecocks' third relief pitcher of the evening.

UCLA broke a scoreless tie in the fifth inning after a run-scoring base-hit by Niko Gallego scored Trevor Brown, who had led off the inning with an infield single.

The Gamecocks forced extra innings by tying the game in the eighth. South Carolina scored the tying run when a ground ball by Bobby Haney went off first baseman Dean Espy's glove as he attempted to backhand the short hop, allowing pinch runner Robert Beary to score from second.

Both squads used clutch pitching to keep a clean sheet after four innings. UCLA put runners in scoring position

in each of the first three innings, but South Carolina starter Michael Roth got out of the jam each time. Roth was helped with a pickoff in the first and a double play in the second.

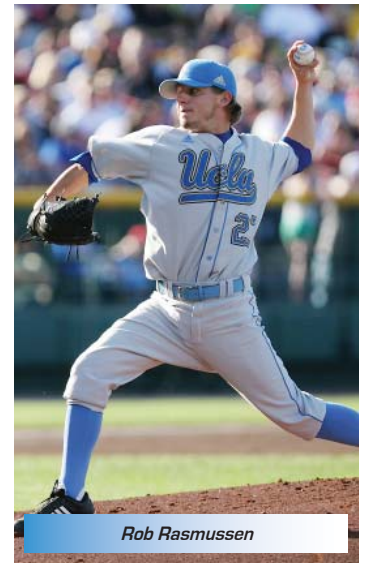
Bruin starter Rob Rasmussen got out of a bases loaded jam in the second by getting Evan Marzilli to fly out to center to end the inning. Rasmussen came up with some big strikeouts later in the game as well, striking out Adrian Morales to end the bottom of the fifth inning with runners and first and third and getting Marzilli looking with two outs and two runners on base in the sixth.

UCLA hit the ball well in the ninth inning, with Cody Regis and Brett Krill each flying out to the warning track. With two outs, Chris Giovinazzo extended the inning, reaching on an error, and Brown moved Giovinazzo to third with a single to shallow center. A walk to Steve Rodriguez loaded the bases, but Matt Price (5-1) struck out Gallego swinging to keep the game tied at 1-1.

"On behalf of UCLA and our baseball program, we'd like to congratulate South Carolina," Savage said. "They've earned the right to be called national champs. Coach Tanner and his staff certainly earned it. They're the last one standing. The national championship is supposed to be played like that. We came up short tonight, but we're very proud and look forward to the future."



Gerrit Cole



Rob Rasmussen



UCLA was in the Final College World Series Game at Rosenblatt Stadium in Omaha, Neb.

THE UCLA BRUINS DEFEAT TEMPLE IN EAGLEBANK BOWL, 30-21

WASHINGTON (AP) - Temple's first bowl game in 30 years was ruined by the Bruins.

Akeem Ayers returned an interception 2 yards for a go-ahead touchdown in the fourth quarter and UCLA shut down Temple in the second half for a 30-21 victory Tuesday in the EagleBank Bowl.

The Bruins (7-6) rallied from a 21-7 first-half deficit to finish with a winning record for the first time since 2006. That mini-slump by UCLA pales in comparison to the decades of futility endured by the Owls (9-4), whose only previous bowl appearances in school history were the inaugural Sugar Bowl in 1935 and the Garden State Bowl in 1979.

UCLA braved the freezing temperatures and a wind chill in the teens to overcome a sluggish start. Kevin Prince completed 16 of 31 passes for 221 yards with two touchdowns and one interception. His counterpart, Vaughn Charlton, had more interceptions (two) than completed passes (one) in the second half.

The Bruins had pulled within 21-20 before Ayers stepped in front of Charlton's screen pass and strolled into the end zone with 6:01 to play. It was Ayers who also had one of the most amazing interceptions of the

college football season in October, when he leaped to snag a pass in the back of the end zone in a loss to Oregon.

The Bruins got a 2-point conversion, then added two more when Temple snapped the ball over its punter's head and out of the own end zone for a safety with 4:29 remaining.

Temple sputtered in the second half minus its star running back, Bernard Pierce. The freshman, who ran for more than 1,300 yards and scored 15 TDs despite missing most of the last two games with an injured shoulder, was hurt again. He sat out as the Owls squandered a lead he helped build with another touchdown run.

The temperature was 32 at kickoff with the wind chill at 19, and it only got colder as the evening wore on - hardly the ideal setting for a team from southern California. By contrast, Temple coach Al Golden didn't even wear a coat for most of the day.

Golden opted for Charlton at quarterback over Chester Stewart, who had started the last four games. Charlton wasted no time getting the Owls downfield on the opening drive, hitting James Nixon deep over the middle for a 43-yard gain to set up a 26-yard touchdown pass to tight end Steve Maneri.

A pair of big plays also put UCLA

on the board. Terrence Austin returned a punt 47 yards, and, on the next play, Nelson Rosario made a juggling catch down the left sideline for a 46-yard score that tied it at 7 in the first quarter.

The Owls then went to the running game, staying on the ground for 53 yards of an 85-yard drive. Pierce slalomed like a skier through the Bruins defense for an 11-yard touchdown run as Temple regained the lead.

Marquise Liverpool's interception of Prince's overthrown pass set up the Owls' next touchdown. A face mask penalty on the return moved the ball to UCLA's 15, and Matt Brown scored from 2 yards four plays later to make it 21-7.

Kai Forbath's 40-yard field goal on the final play of the first cut UCLA's deficit, and the Bruins scored on the first possession of the second half when Austin caught a fourth-and-1 pass in the flat and took it 32 yards up the right sideline for a touchdown.



Temple was moving to score again, but Brown was stopped on fourth-and-1 at the UCLA 9, and Bruins sophomore Rahim Moore's 10th interception of the season ended another Owls drive. Moore leads major college football in interceptions.

Forbath, who won the Lou Groza Award honoring the nation's best kicker, made a 42-yarder to pull the Bruins within a point with 12:31 to play.

The game drew 23,072 to RFK Stadium, a decline of more than 5,000 from last year's inaugural game. Organizers had to dig deep for participants because the original matchup - Army vs. an Atlantic Coast Conference team - didn't pan out because Army finished with a losing record and the ACC lacked enough bowl-eligible schools.





The UCLA athletic program enjoyed another outstanding year in 2009-10. The only program to win 100 NCAA team titles, UCLA captured NCAA championships in women's gymnastics and softball during the just-completed school year.

UCLA placed fourth nationally in competition for the Learfield Directors' Cup, which is presented annually by the National Association of Collegiate Directors of Athletics, with 1,124 points. The Bruins scored points in 12 of its 13 women's sports (only 10 count in the final score) and eight of its 11 men's sports.

It is UCLA's 15th Top Five finish in the 17-year history of the Cup. Overall, UCLA has finished second seven times, third five times, fourth once, fifth twice, sixth once and 16th once.

UCLA has won 20 NCAA team championships in the last eight years, the most of any school in the country. Those 20 titles have been won by 11 different

programs. UCLA teams have also placed second 16 times in that eight-year span.

In 2009-10, UCLA won its 11th NCAA Championship in softball and its sixth in women's gymnastics. The Bruins finished second in baseball (first appearance in the finals of the College World Series) and men's water polo, tied for third in women's soccer (seventh straight College Cup), fifth in women's water polo, tied for fifth in men's soccer and men's tennis, sixth in women's golf, tied for ninth in women's tennis, 12th in women's rowing (first appearance in the team competition), 16th in men's golf, tied for 17th in women's basketball and women's volleyball and 19th in women's swimming (all finishes are in NCAA championship competition).

UCLA also won three conference titles and two league post-season tournaments and the football team won the EagleBank Bowl.



FOOTBALL



CB Alterraun Verner

- Overall Record: 7-6
- Conference Record (Finish): 3-6 (8th)
- UCLA started the season well, defeating all three of its non-conference opponents. Included in the 3-0 start was a thrilling victory in Knoxville, Tennessee on ESPN in front of over 100,000 Volunteer fans.
- UCLA won four of its final five games, including a come-from-behind 30-21 victory over Temple in the EagleBank Bowl in Washington DC.
- 2009-10 All-Americans: PK Kai Forbath (consensus first team); DT Brian Price (first team); S Rahim Moore (first team); CB Alterraun Verner (first team).
- 2009-10 All-Conference Performers: First Team: PK Kai Forbath, S Rahim Moore, DT Brian Price, CB Alterraun Verner, LB Reggie Carter; Second Team: P Jeff Locke, KOR Terrence Austin.
- Junior defensive tackle Brian Price was named Pac-10 Pat Tillman Defensive Player of the Year. He made 23 tackles for loss during the year, No. 2 in UCLA history and No. 3 (tied) in the country.
- Junior place kicker Kai Forbath won the Lou Groza National Place-Kicker of the Year Award and led the nation in field goals per game. On the year, he made 28 of 31 kicks, including all 25 from inside 50 yards.
- Junior free safety Rahim Moore led the nation with 10 interceptions, one shy of the UCLA school record. His 10 interceptions were the most by an FBS player since 2003.
- Freshman quarterback Kevin Prince became only the second freshman in UCLA history to pass for over 300 yards in a game three times.
- Sophomore linebacker Akeem Ayers scored three defensive touchdowns – two in interceptions and one on a fumble recovery. He scored the winning points in the EagleBank Bowl.

MEN'S BASKETBALL



Guard Michael Roll

- Overall Record: 14-18
- Conference Record (Finish): 8-10 (T-5th)
- Senior guard Michael Roll set the UCLA record for most games played in a career at 147 surpassing Darren Collison and Alfred Aboya's 142.
- Roll also finished his career tied for second on the UCLA career charts with Arron Afflalo with 209 made three-pointers, tied for fourth with Toby Bailey with 501 three-pointers attempted and fifth in three-point field goal percentage at 41.7 percent.
- 2008-09 All-Conference performers: First Team: Guard Michael Roll; All-Freshman Team: Forward Tyler Honeycutt, Forward Reeves Nelson.
- Michael Roll finished third in the Pac-10 in 3-Pt. percentage (.419), fourth in assists (3.6 apg) and 13th in scoring (13.7 ppg).
- Reeves Nelson finished second in the Pac-10 in FG percentage (.619), 19th in scoring (11.7 ppg) and 15th in rebounding (5.3 rpg).
- Tyler Honeycutt finished fifth in steals (1.7 spg), fifth in blocks (1.4 bpg), sixth in rebounding (7.2 rpg) and eighth in assists (3.3 apg).
- UCLA's 2010-11 recruiting class was ranked No. 10 by ESPN.
- UCLA saw its nation-leading streak of 13 straight years with an NBA Draft pick come to a halt with the 2010 NBA Draft on June 24, 2010 at the Theatre at Madison Square Garden in New York City. The streak began with Charles O'Bannon in 1997 and ended with Jrue Holiday and Darren Collison in 2009. In all, 20 UCLA Bruins were drafted in the 13-year span, including eight first-round picks. Additionally, 10 of those players drafted played for Head Coach Ben Howland (six first-round picks).

WOMEN'S VOLLEYBALL



OH Kaitlin Sather

- Overall Record: 24-9
- Conference Record (Finish): 13-5 (T-2nd)
- UCLA finished the season with its 11th-consecutive, 20-win season and a No. 14 national ranking
- 2009-10 All-Americans: MB Amanda Gil (second team); OH Kaitlin Sather (honorable mention)
- 2009-10 All-Conference Performers: First Team: MB Amanda Gil, OH Kaitlin Sather; Honorable Mention: S Lauren Cook, OH Dicey McGraw, L Lainey Gera; All-Freshman Team: S Lauren Cook (Pac-10 Freshman of the Year), OH Bojana Todorovic; Honorable Mention All-Freshman Team: OH Mari Hole
- Andy Banachowski, the winningest coach in women's volleyball history, retired in January 2010. He won his 1,100th-career match in 2009 and finished with a record of 1,106-301
- Lauren Cook became the first Bruin to earn National Freshman of the Year honors. She was also named Region and Pac-10 Freshman of the Year.

MEN'S SOCCER



GK Brian Perk

- Overall Record: 12-4-4
- Conference Record (Finish): 5-1-4 (1st)
- 2009-10 All-Americans: Kyle Nakazawa (first team), Brian Perk (second team)
- 2009-10 All-Conference Performers: First Team: MF Kyle Nakazawa, MF Michael Stephens, MF David Estrada, GK Brian Perk; Second Team: MF Amobi Okugo (Freshman of the Year); Honorable Mention: D Sean Alvarado
- UCLA advanced to the quarterfinals of the NCAA Tournament and extended its streak of NCAA appearances to 27 consecutive years
- Kyle Nakazawa was named the National Player of the Week twice and also became only the third men's soccer player ever to earn back-to-back Pac-10 Player of the Week honors
- A school record-tying five UCLA players were selected in the 2010 MLS Super-Draft, including three in the first round (Amobi Okugo, #6 pick by Philadelphia; David Estrada, #11 pick by Seattle; Michael Stephens, #16 pick by the Los Angeles Galaxy)

WOMEN'S SOCCER



Forward Kristina Larsen

- Overall Record: 21-3-1
- Conference Record (Finish): 8-1 (2nd)
- UCLA reached the NCAA College Cup for the seventh year in a row and ended the season with a final national ranking of No. 3
- 2009-10 All-Americans: F Lauren Cheney (first team), F Sydney Leroux (third team)
- 2009-10 All-Conference Performers: F Lauren Cheney (first team), Sydney Leroux (second team), Lauren Wilmoth (second team), Lauren Barnes (second team), Kristina Larsen (honorable mention), Dea Cook (honorable mention)
- Single-season school records: Points (214), assists (74)

WOMEN'S BASKETBALL



Guard Doreena Campbell

- Overall Record: 25-9
- Conference Record (Finish): 15-3 (2nd)
- Nikki Caldwell named Pac-10 Coach of the Year, the first UCLA head coach to earn that honor
- The 25 wins rank as the fourth-most in school history
- The second-place conference finish was UCLA's best since it captured a share of first in the 1998-99 season
- The team held opponents to 57.5 points per game which ranked as the lowest mark in school history
- The Bruins finished with a national ranking of No. 23 in the ESPN/USA Today Coaches poll, the first time in that season-ending poll since being ranked 18th at the conclusion of the 2006 season (No. 22 in AP poll)
- 2008-09 All-Conference Performers: G Doreena Campbell, F Jasmine Dixon; All-Freshman Team: F Markel Walker

MEN'S CROSS COUNTRY



Senior Marco Anzures

- Conference Finish: 5th
- NCAA West Region Finish: 7th
- UCLA won the Dave Murray Invite and was second at the BYU Autumn Classic
- Marco Anzures represented the men at the NCAA Championships, finishing 249th overall
- 2009 All-Conference Performers: Second Team: Senior Marco Anzures
- 2009 All-West Region Performers: Senior Marco Anzures
- 2009-10 Pac-10 All-Academic Performers: Second Team: Senior Marco Anzures, senior Alex Crabill Honorable Mention: Junior Kevin Sullivan

WOMEN'S CROSS COUNTRY



Junior Shannon Murakami

- Conference Finish: 7th
- NCAA West Region Finish: 11th
- Shannon Murakami was the No. 1 runner in every meet the women competed in, and was UCLA's representative at the NCAA Championships (finishing 114th)
- 2009 All-Conference Performers: Second Team: Junior Shannon Murakami
- 2009 All-West Region Performers: Junior Shannon Murakami
- 2009 Pac-10 All-Academic Performers: Honorable Mention: Sophomore Katja Goldring, Junior Rosa Magana, Sophomore Taryn Pastoor, Junior Kelcie Wiemann

MEN'S WATER POLO



Attacker Scott Davidson

- Overall Record: 23-7
- Conference Record (Finish): 5-3 (4th)
- Final National Ranking: 2nd
- Senior attacker Scott Davidson led UCLA with 47 goals, concluding his four-year career with 152 goals (fifth in school history)
- Davidson became UCLA's first MPSF Player of the Year since 2000 (Sean Kern)
- Senior goalkeeper Chay Lapin totaled 205 saves, setting the school's career saves record with 719 stops in four seasons
- UCLA won the MPSF Tournament title before reaching the NCAA Tournament's title match
- 2009-10 All-Americans: AT Scott Davidson (first team); AT Ben Hohl (second team); GK Chay Lapin (second team)
- 2009-10 All-Conference Performers: AT Scott Davidson (Player of the Year); AT Ben Hohl (second team); GK Chay Lapin (second team)
- 2009-10 ACWPC Academic All-American Honors: AT Ben Hohl, AT Cullen Hennessy

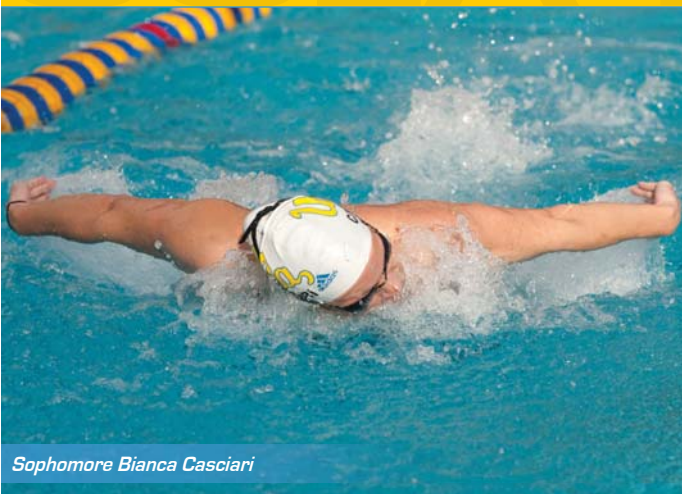
WOMEN'S GYMNASTICS



Senior Anna Li

- Overall Record: 17-3
- Conference Record (Finish): 5-2 (1st)
- NCAA Championship Finish: 1st
- 2009-10 NCAA Event Champions: Vanessa Zamarripa (Vault), Brittani McCullough (Floor Exercise)
- 2009-10 Event All-Americans: Vanessa Zamarripa (4 times), Anna Li (3 times), Elyse Hopfner-Hibbs (2 times), Brittani McCullough, Aisha Gerber
- 2009-10 All-Conference Performers: First Team: Vanessa Zamarripa (All-Around and Gymnast of the Year), Elyse Hopfner-Hibbs (Vault, Balance Beam, Floor Exercise), Anna Li (Vault, Uneven Bars), Tauny Frattone (Vault), Lichelle Wong (Uneven Bars), Brittani McCullough (Floor Exercise); Second Team: Brittani McCullough (Vault), Aisha Gerber (Balance Beam)
- 2009-10 All-Academic Performers: Second Team: Sophomore Aisha Gerber, Sophomore Elyse Hopfner-Hibbs; Honorable Mention: Junior Mizuki Sato, Junior Allison Taylor, Junior Niki Tom

WOMEN'S SWIMMING & DIVING



Sophomore Bianca Casciari

- Overall Record: 5-4
- Conference Record (Finish): 2-4 (5th)
- NCAA Championship Finish: 18th
- 2009-10 All-Americans: Brittany Beauchan, Bianca Casciari, Laurence Delisle, Lauren Hall, Sam Vanden Berge
- 2009-10 All-Academic Performers: First Team: Junior Dani Milligan; Second Team: Junior Brittany Beauchan, Junior Lauren Hall, Sophomore Isabel Williams; Honorable Mention: Senior Kirsten Byers, Senior Isabell Fischer, Sophomore Madison Fitzgerald, Sophomore Yasi Jahanshahi, Senior Alexandra Nalevanko, Junior Alex Sullivan and Junior Laura Winn
- During the competition year, several class records were set, as well as eight individual school records and two relay records

MEN'S TENNIS



Junior Nick Meister

- Overall Record: 17-7
- Conference Record (Finish): 4-2 (3rd)
- Final National Ranking: 6th
- The Bruins advanced to the quarterfinals of the NCAA Championships in Athens, Ga., and have finished in the top 5 at the NAAs in each of the last 23 years
- 2009-10 All-American Honors: Nick Meister (doubles), Amit Inbar (doubles)
- 2009-10 All-Conference Honors: First Team: Nick Meister (first team), Matt Brooklyn (second team), Amit Inbar (second team), Haythem Abid (honorable mention)
- 2009-10 All-Academic Performers: Nick Meister (second team), Kallim Stewart (second team), Amit Inbar (honorable mention)

WOMEN'S TENNIS



Senior Yasmin Schnack

- Overall Record: 21-4
- Conference Record (Finish): 6-1 (2nd)
- Final National Ranking: 6th
- UCLA climbed to No. 2 in the national rankings in March
- Yasmin Schnack was named Pac-10 Player of the Year
- Andrea Remyse and Yasmin Schnack were named the Pac-10 Doubles Team of the Year
- 2009-10 All-American Honors: Yasmin Schnack (singles and doubles), Andrea Remyse (doubles), Noelle Hickey (singles)
- 2009-10 All-Conference Performers: Yasmin Schnack (first team), Andrea Remyse (second team), Noelle Hickey (honorable mention)
- 2009-10 All-Academic Performers: Andrea Remyse (first team), Nina Pantic (honorable mention)

MEN'S VOLLEYBALL



OH Garrett Muagututia

- Overall Record: 16-14
- Conference Record (Finish): 11-11 (7th)
- Final National Ranking: 9th
- The 2010 Bruins earned UCLA's 47th playoff berth in 48 seasons
- Posted a pair of victories over top-ranked Cal State Northridge, an NCAA semifinalist
- 2009-10 All-Americans: OH Garrett Muagututia (Second Team)
- 2009-10 All-Conference Performers: Second Team: OH Garrett Muagututia
- 2009-10 All-Academic Performers: S Kevin Ker, OP Jack Polales, OH Dylan Bowermaster, MB Thomas Amberg

MEN'S GOLF



Sophomore Gregor Main

- Conference Finish: 8th
- NCAA Final Ranking: 7th
- NCAA Championship Finish: T-16th
- UCLA extended its school-record of consecutive NCAA Championship appearances to eight straight years
- UCLA won a pair of tournaments during the season. Sophomore Gregor Main set a single season UCLA scoring record of 71.06 in 37 rounds
- 2008-09 All-Americans: So. Gregor Main (honorable mention) and So. Alex Shi Yup Kim (honorable mention)
- 2008-09 All-Conference performers: First Team: So. Alex Shi Yup Kim; Second Team: So. Gregor Main, Fr. Pedro Figueiredo and Fr. Pontus Widegren

WOMEN'S GOLF



Sophomore Stephanie Kono

- Conference Finish: 2nd
- NCAA Final Ranking (NCAA Championship Finish): 1st (6th)
- UCLA made its 10th consecutive NCAA Championship appearance and recorded its fourth straight Top 10 finish
- Finished in the Top 10 in every tournament in 2010, and recorded two tournament titles during the season
- 2009-10 All-Americans: So. Stephanie Kono (first team), Fr. Tiffany Lua (second team), Sr. Sydnee Michaels (second team)
- 2009-10 All-Conference Performers: First Team: So. Stephanie Kono, Sr. Sydnee Michaels; Second Team: So. Brianna Do, Fr. Tiffany Lua; Honorable Mention: Jr. Glory Yang
- 2009-10 All-Academic Performers: Honorable Mention: So. Stephanie Kono and Jr. Glory Yang

WOMEN'S ROWING



UCLA Varsity Eight

- Conference Finish: 5th
- NCAA Tournament Finish: 12th
- UCLA earned its first-ever team berth to the NCAA Championships in 2010
- The Bruins' varsity four earned a bronze-medal finish at the 2010 Pac-10 Championships
- UCLA's varsity eight earned dual-meet wins over Loyola Marymount, San Diego State, Clemson and Notre Dame
- The varsity eight advanced in its elimination heat on day one of the NCAA Championships, advancing to the semifinals
- 2008-09 All-Conference Performers: Senior Alexandra Bolt
- 2008-09 All-Academic Performers: First Team: Sr. Lynn Hancock, Sr. Christina Sprouse, Jr. Alaizah Koorji, So. Taylor Vella. Second Team: So. Anna Musky-Goldwyn

SOFTBALL



P/1B Megan Langenfeld

- Overall Record: 50-11
- Conference Record (Finish): 14-7 (2nd)
- Final National Ranking: 1st
- UCLA won the program's 12th national championship and 11th NCAA title, going undefeated in the postseason while setting numerous school and Women's College World Series records
- Megan Langenfeld was named the Most Outstanding Player of the Women's College World Series and was joined on the All-Tournament Team by Samantha Camuso and Andrea Harrison
- 2009-10 All-Americans: INF GiOnna DiSalvatore (first team), P/1B Megan Langenfeld (first team)
- 2009-10 All-Conference Performers: First Team: P/1B Megan Langenfeld (Pac-10 Player of the Year), INF GiOnna DiSalvatore, OF Andrea Harrison; Second Team: INF Julie Burney; Honorable Mention: P Donna Kerr, INF Monica Harrison, C Kaila Shull, UTIL Dani Yudin

BASEBALL



Pitcher Trevor Bauer

- Overall Record: 51-17
- Conference Record (Finish): 18-9 (2nd)
- Final National Ranking: 2nd (NCAA Runner-up)
- UCLA advanced to the finals of the College World Series for the first time in school history, earning their third-ever trip to Omaha
- The Bruins' pitching staff established the Pac-10 and school single-season record with 700 strikeouts while Trevor Bauer set UCLA's record, fanning 165 batters
- Beau Amaral, Trevor Bauer and Cody Regis were each selected to the All-Tournament Team at the NCAA Los Angeles Regional and College World Series
- 2009-10 All-Americans: P Trevor Bauer, P Gerrit Cole, OF Beau Amaral (Fr. All-American)
- 2009-10 All-Conference Performers: P Trevor Bauer, P Gerrit Cole, P Dan Klein, INF Tyler Rahmatulla, P Rob Rasmussen; Honorable Mention: OF Beau Amaral, OF Blair Dunlap, INF Dean Espy, INF Niko Gallego, OF Cody Keefer, OF Brett Krill, INF Cody Regis
- 2009-10 All-Academic Performers: First Team: 1B Justin Uribe; Second Team: P Matt Grace; Honorable Mention: OF Marc Navarro, P Rob Rasmussen

WOMEN'S WATER POLO



Attacker Priscilla Orozco

- Overall Record: 22-8
- Conference Record (Finish): 4-3 (T-3rd)
- Final National Ranking: 5th
- Sophomore goalkeeper Caitlin Dement established UCLA's single-season saves record, making 264 stops
- UCLA became the first No. 5 seed to win the MPSF Tournament, dispatching higher-seeded opponents Hawai'i, Stanford and USC on consecutive days
- 2009-10 All-Americans: AT Priscilla Orozco (first team); CTR Grace Reynolds (second team)
- 2009-10 All-Conference Performers: AT Priscilla Orozco (first team); GK Caitlin Dement (second team); CTR Grace Reynolds (second team)
- 2009-10 ACWPC All-Academic Selections: DEF Megan Burmeister, UTL KK Clark, DEF Kelly Easterday, CTR Katie Estrada, ATT Leah Trella

MEN'S TRACK & FIELD



All-American Cory Primm

- Pac-10 Conference Finish: T-4th
- MPSF Indoor Conference Finish: 1st
- Final National Ranking: T-52nd (Outdoor)
- Final National Ranking: T-47th (Indoor)
- 2009-10 Outdoor All-Americans: Cory Primm (800m), Jamal Alston (4x100), Max Dyce (4x100), Stan Griffin (4x100), Brandon Smith (4x100)
- 2009-10 Indoor All-Americans: Cory Primm (DMR), Scott Crawford (DMR), Marlon Patterson (DMR), Guentin Powell (DMR)
- 2009-10 Pac-10 All-Academic Performers: Second Team: Senior Marco Anzures, Honorable Mention: Junior Jonathan Clark, Junior Alex Crabill, Junior Scott Crawford, Freshman Nigel Davies, Junior Cory Primm, Sophomore Jun Reichl, Junior Greg Woepse
- 2009-10 USTFCCCA All-Academic honorees: Marco Anzures, Alex Crabill, Scott Crawford, Nigel Davies, Greg Woepse

WOMEN'S TRACK & FIELD



All-Americans Tori Pena (left) and Katy Viuf

- Pac-10 Conference Finish: 6th
- MPSF Indoor Conference Finish: 5th
- Final National Ranking: 25th (Outdoor)
- Final National Ranking: T-56th (Indoor)
- 2009-10 Outdoor All-Americans: Senior Tori Pena and Senior Katy Viuf
- 2009-10 Indoor All-Americans: Sophomore Ryann Kraiss, Senior Tori Pena, Senior Danielle Watson
- 2009-10 Pac-10 All-Academic Performers: Second Team: Sophomore Ryann Kraiss, Honorable Mention: Sophomore Shannon Armstrong, Junior Ashlea McLaughlin, Senior Tori Pena, Junior Kelcie Wiemann, Senior Katy Viuf
- 2009-10 USTFCCCA All-Academic honorees: Ryann Kraiss, Tori Pena, Kelcie Wiemann



Bruin student-athletes, coaches and staff continued to volunteer their time to community events on campus and throughout the Los Angeles area this past year. These service opportunities gave student-athletes the chance to mentor youth, give back to the community and serve as ambassadors for UCLA Athletics. Examples of these events included:

- Marathon Kids®
- Dribble for the Cure
- "I'm Going to College" Program
- Visits to Mattel Children's Hospital
- Team Prime Time
- Adopt a Classroom
- UCLA Lab School Jog-A-Thon
- Elementary school activities and reading days
- Prime Time Games
- Sports clinics
- Individual speaking engagements

DRIBBLE FOR THE CURE:

In the fall of 2009, UCLA basketball and the Bruin Athletic Department hosted the 2nd Annual Dribble for the Cure. The Bruins joined forces with the Pediatric Cancer Research Foundation (PCRF) and Mattel Children's Hospital UCLA to raise money for pediatric cancer research. Head Basketball Coaches, Ben Howland and Nikki Caldwell led the basketball teams and over 750 participants dribbling basketballs and walking around a course through the UCLA campus. UCLA's Dribble for the Cure event raised over \$90,000 with proceeds benefiting research to find a cure for pediatric cancer and support of the treatment of children with cancer at Mattel Children's Hospital UCLA.



MARATHON KIDS®:

For the past four years UCLA Athletics has partnered with Marathon Kids® and Los Angeles Unified School District to host two annual Marathon Kids events at Drake Stadium. The annual Kick Off Celebration marks the beginning of the five-month program that encourages Marathon Kids to learn to live an active and healthy lifestyle. During the five-month period children, accompanied by their parents, will run or walk quarter to half-mile segments towards their goal of the marathon distance of 26.2 miles. In addition to the running, Marathon Kids are encouraged to eat five servings of fruits and vegetables a day, and even learn to grow fruits and veggies. Participants are invited to come back to UCLA for the Final Mile Medal Celebration in the spring where they receive their medals from Bruin student-athletes and staff.



MATTEL CHILDREN'S HOSPITAL:

Throughout the year many of our Bruin coaches and student-athletes visit the patients at Mattel Children's Hospital. Bruins volunteer to attend weekly playroom hours with the patients, the annual Halloween "Trick or Treat" event, and the Hematology/Oncology Holiday Party.



UCLA LAB SCHOOL JOG-A-THON:

For the fourth year, Bruin student-athletes volunteered at the UCLA Lab School's Jog-A-Thon at Drake Stadium. The annual event raises money for students to participate in school field trips.





"I'M GOING TO COLLEGE":

Over 27,000 students from the Los Angeles Unified School District participated in this year's "I'm Going to College" program. This unique program brings kindergarten - 12th graders to UCLA events, and couples the excitement and tradition of UCLA Athletics with a message about the importance of higher education. Upon arrival to the event, students are greeted by a UCLA Alumnus, current students, or student-athlete volunteers, and are then led to the IGTC fair area. Students are immediately immersed in Bruin traditions, as they learn the spirited UCLA Eight Clap and receive educational information about questions they may have regarding education and preparing for college.



ADOPT A CLASSROOM PROGRAM:

The pen pal program paired Bruin teams with elementary and middle school classrooms across the Los Angeles Unified School District. The student-athletes exchanged letters throughout the year, and the classrooms were invited to attend a home event to meet their Bruin pen pals.



TEAM PRIME TIME:

Bruin student-athletes volunteered their time with Team Prime Time (TPT), which is an after-school program for at-risk children from low-income areas of Los Angeles that combines academics, athletics, leadership training and the arts in order to prepare them for the future and allow them to reach their full potential. The women's basketball team conducted a basketball clinic, and members of the football team participated in the "Man-Maker Wednesdays" program during their off-season. In addition to putting the TPT students through workouts, the UCLA student-athletes shared their personal stories of success, the importance of setting goals, and the dedication needed to achieve these goals.



PRIME TIME GAMES:

The UCLA football team hosted the Prime Time Games; a full-inclusion, peer-mentor sports program in which economically disadvantaged and under-served middle school students from the Team Prime Time after-school program ("coaches") coach and play alongside children with developmental disabilities ("athletes") in the only after school sports program of its kind. Coach Neuheisel, football staff members and Bruin alums kicked off the Opening Ceremonies. Members of the football team and student-athletes from other Bruin teams participated in "Championship Saturday," serving as honorary coaches and captains for the inclusive soccer and basketball teams.



BRUIN ACADEMY:

Student-athlete's from the Bruin Athletic Council (BAC) hosted the Bruin Academy last spring at UCLA's Spaulding Field. The Bruin Academy invited kids from Team Prime Time and the Bruin Kids Club to participate in an afternoon of fun and educational activities. Bruin student-athletes facilitated activities and talked with the participants about the importance of sportsmanship, balance, effort, unity, leadership, competitiveness and skill.



SCHOLAR-ATHLETE BANQUET

Each spring, approximately 175 student-athletes with cumulative GPAs of 3.0 or better are invited to the Scholar-Athlete Banquet. Made possible by a donation from Rose Gilbert, the event features distinguished guests and allows us to honor our most academically accomplished athletes.

The past four years have seen notable alumni speakers return to campus, inspiring our student-athletes to succeed in the classroom and use their education for great things.

In 2007, former football wide receiver and current federal judge Cormac Carney addressed the gathering, in 2008, it was four-time All-American basketball player Ann-Meyers Drysdale, and in 2009, it was 12-year NBA veteran, Tracy Murray.

Donors who have endowed an athletic scholarship are encouraged to attend the Scholar-Athlete Banquet. Please contact the UCLA Athletics Development Office at (310) 206-3302 for more information.



2009-10 AWARD WINNERS:

Courage and Character Award:

Presented to one female and one male who not only excelled in their sport and in the classroom, but overcame adversity and hardship to do so.

- Brittani McCullough.....Gymnastics
- Chay Lapin.....Men's Water Polo

Maggie Gilbert Academic Achievement Award:

Presented to two senior student-athletes who may not have had the greatest start academically at UCLA, but never gave up and improved their GPA throughout their career and were still able to excel in their sport.

- Julie Burney..... Softball
- Danielle Watson Women's Track

Bruin Leadership Award:

Presented to two student-athletes who demonstrated leadership outside of the realm of athletics.

- Allison Taylor.....Gymnastics
- Matt Preciado Men's Water Polo



Goalkeeper Chay Lapin

UCLA All-Academic Team:

The All-Academic Team consists of 22 members. It is made up of the person with the highest Cum GPA from each of our sports teams. The overall GPA of our UCLA All-Academic team is 3.6.

- Justin Uribe*Baseball
 - Mustafa Abdul-Hamid*** ..Basketball
 - Allison Taka**Basketball
 - Marc Hausmaninger* ...Cross Country
 - Taryn Pastoor* Cross Country
 - Jeff Locke* Football
 - Connor Driscoll**Golf
 - Glory Yang*Golf
 - Aisha Gerber*Gymnastics
 - Lynn Hancock* Rowing
 - Monica Harrison*Softball
 - Daren Flitcroft*Soccer
 - Elise Britt*Soccer
 - Isabel Williams*Swimming & Diving
 - Jeff Gast*Tennis
 - Andrea Remyse**Tennis
 - Nigel Davies*Track & Field
 - Shannon Armstrong*Track & Field
 - Dylan Bowermaster***Volleyball
 - Amber McBenttez*Volleyball
 - Benjamin Hohl** Water Polo
 - Kelsey Haffercamp** Water Polo
- * - first year on the All-Academic Team
 ** - second year on the All-Academic Team
 *** - third year on the All-Academic Team

Don Shepherd Post Graduate Scholarship Winners:

- David McGrath.....Basketball
- Lynn Hancock..... Rowing

Sam and Rose Gilbert Post Graduate Fellowship Winner:

- Krsto Sbutega..... Water Polo
- Emily Feher Water Polo
- Rhonda Watkins Track & Field

Pac-10 Post Graduate Scholarship Winners:

- Mustafa Abdul-Hamid.....Basketball
- Kaitlin Sather.....Volleyball
- Marco Anzures..... Cross Country
- Erica Tukiainen.....Basketball

Tom Hansen Pac-10 Conference Medal Winners:

This is awarded annually to each Pac-10 institution's outstanding senior male and female student-athlete based on the exhibition of the greatest combination of performance and achievement in scholarship, athletics and leadership.

- Mustafa Abdul-Hamid.....Basketball
- Kaitlin Sather.....Volleyball

Athletic Director's Academic Excellence Award:

The following seniors who received this award have made the Director's Honor Roll every quarter that they were at UCLA.

- Mustafa Abdul-Hamid.....Basketball
- Lynn Hancock..... Rowing
- Christina Sprouse..... Rowing
- Allison Taka.....Basketball



Scholar-Athletes of the Year



Lynn Hancock
Women's Rowing



Mustafa Abdul-Hamid
Men's Basketball



Wooden Academy: Teamwork, Leadership and Character

The Wooden Academy is a comprehensive leadership development program designed to educate and support the standards of leadership for UCLA student-athletes. The pillars of the Wooden Academy are teamwork, leadership and character. The program is named after legendary Coach John R. Wooden, and teaches the values and principles that he used to create the "Pyramid of Success." These skills will assist student-athletes in their pursuit to be successful leaders and teammates at UCLA, and as they prepare to be champions in life. Student-athletes have the opportunity to participate in the Wooden Academy each year by attending seminars and learning practical leadership lessons from coaches, administrators and Bruin alumni.



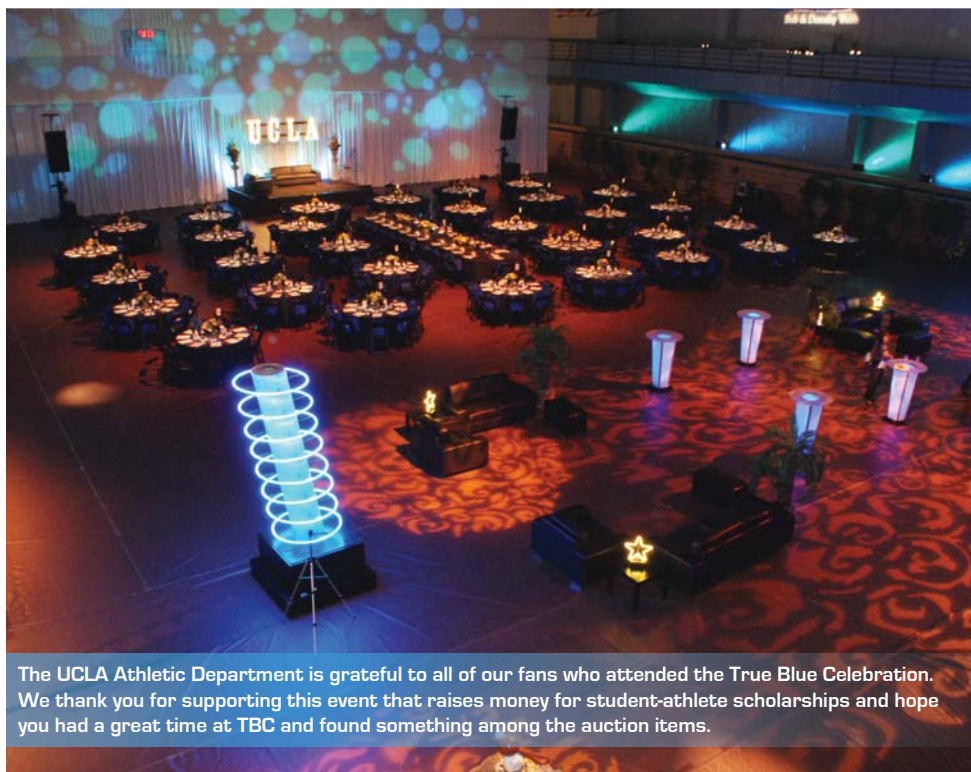
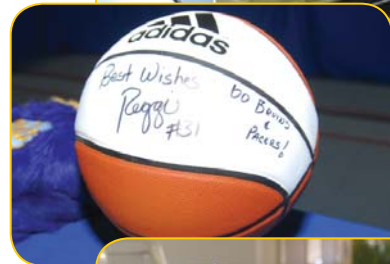
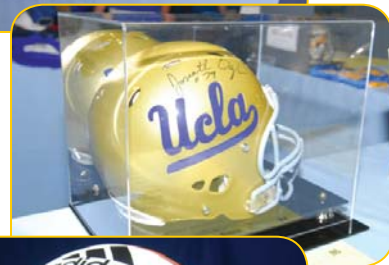
S.U.C.C.E.S.S. "Student-Athletes Understand that Character Creates Educational Self-Sufficiency"

The mission of the UCLA Academic & Student Services office (AS2) and its S.U.C.C.E.S.S. Program is to provide an interactive learning environment that emphasizes life-long learning habits, goal setting, teamwork, leadership and character. Centered on the idea of the self-sufficient, independent learner, the S.U.C.C.E.S.S. Program features academic counseling, academic and student support services, and student-athlete development programs that support and motivate student-athletes to reach their full potential academically and personally. The AS2 team promotes a healthy balance between academics and athletics and embraces UCLA's "True Bruin" philosophy setting forth the ethical standards of integrity, excellence, accountability, and respect. Our commitment is to assist student-athletes in their transition to the University, earn their UCLA degree, and develop their skills and confidence to be champions in life.





On May 22, 2010 the John Wooden Center was host to the Fifth Annual True Blue Celebration, the Athletic Department's signature fundraising auction. The event continued its remarkable growth and innovation, and featured wine tasting, a sit-down served dinner, souvenir giftbags, vacation giveaways, and drawings for numerous high-quality prizes. Attended by over 600 Bruins, it generated over \$100,000 in net revenue from the sale of over 500 silent auction items and a live auction composed of unique Bruin experiences and auction items. The True Blue Celebration truly lived up to its name.



The UCLA Athletic Department is grateful to all of our fans who attended the True Blue Celebration. We thank you for supporting this event that raises money for student-athlete scholarships and hope you had a great time at TBC and found something among the auction items.

HIGHLIGHTS OF PAULEY PAVILION RENOVATION AND EXPANSION

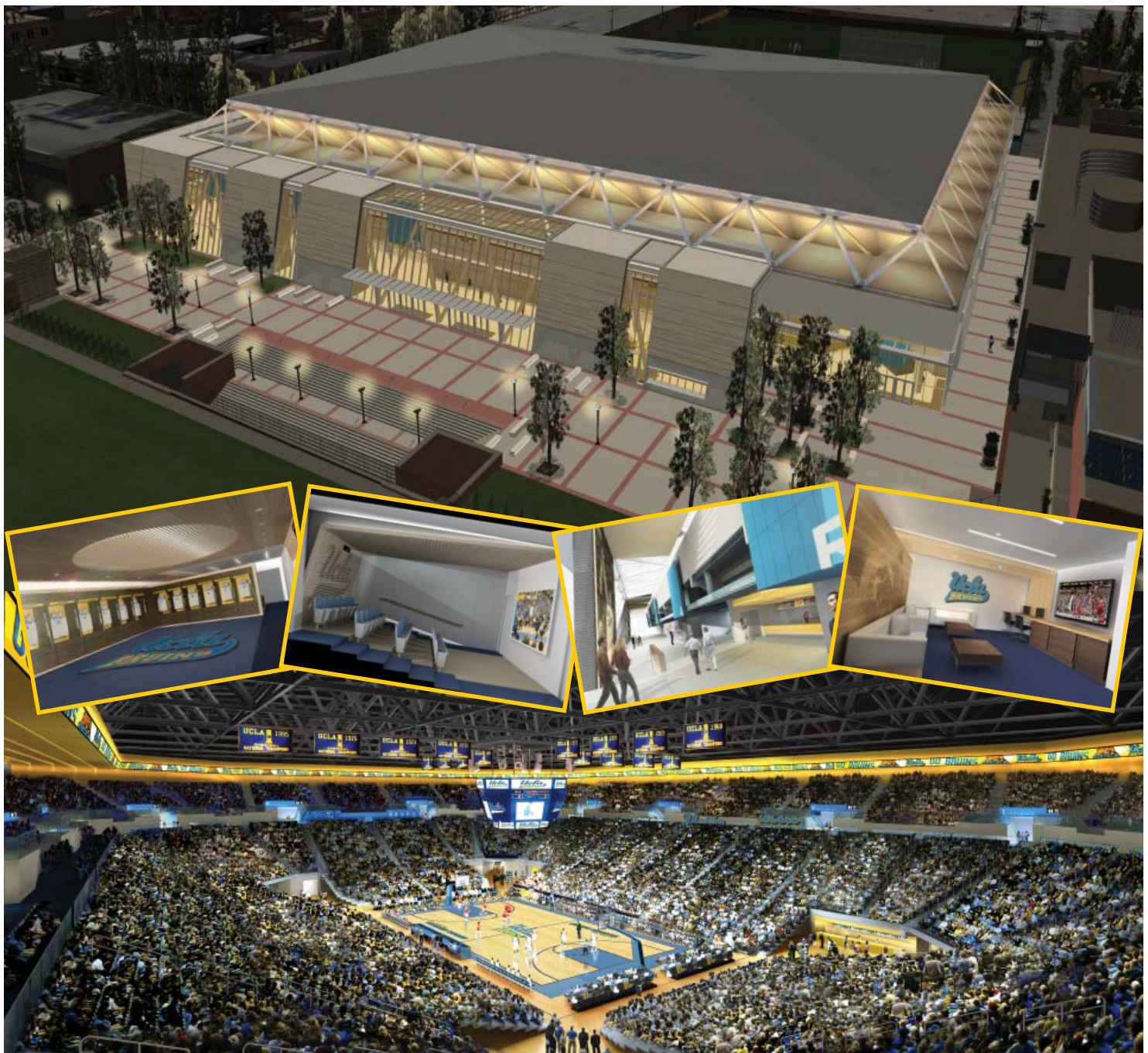
- New seating bowl with new aisles and steps with safety handrails (new seats, seating sections and entry points)
- Retractable seating system on the lower level includes individual padded seats instead of benches
- Renovated bowl includes over 1,000 additional seats, bringing seating capacity closer to 14,000
- New center-hung HD video board and LED ribbon board that encircles the arena interior
- North side of the pavilion will feature a grand lobby
- Facility will feature more than 25 additional points of sale for concessions and increased number of restrooms
- North side will include large locker rooms with player lounges for the men's and women's basketball teams
- Other features for student-athletes include film room, sports medicine room, weight room and equipment room
- Pavilion Club on the mezzanine of the same structure will serve the campus for numerous special events



CURRENT TIMELINE OF RENOVATION

- Construction of the project began in March 2010
- For the first year, the work will be focused on the north side and exterior of the facility
- At conclusion of 2010-11 basketball season, Pauley Pavilion will close for interior work
- All programs currently held in the venue will take place at alternate sites until construction is completed
- The transformed Pauley Pavilion is slated to open in the Fall of 2012

Over \$70 million raised as of Jan. 1, 2011



REVENUE

Sports Programs	\$28,720,280
Expendable Gifts	\$9,217,002
Broadcast Rights	\$4,998,603
Sponsorship & Business Enterprises	\$10,279,937
University Support	\$2,750,481
Endowment Payouts	\$1,718,097
NCAA Direct Support	\$1,508,986
Miscellaneous	\$1,159,117
Interest Earned	\$190,368
	\$60,542,871

EXPENSE

Sports Programs	29,296,935
Sports & Administrative Support	\$14,077,131
Scholarships	\$9,744,653
Business Enterprises	\$3,187,599
Facilities & Venues	\$3,862,414
Debt Service	\$374,139
	\$60,542,871



Pauley Pavilion



The Rose Bowl in Pasadena, Calif.

Grant-In-Aid Donors (through May 15, 2010)

Football

Edgardo & Francesca Acosta
Troy & Rhonda Aikman
John & Catherine Allen
Bill & Kathleen Bitting
Bill & Peggy Bloomfield
Terry & Dora Brigham
Tom & Arabelle Brown
In memory of Bob Campbell
Estate of John Canaday
Jim & Carol Collins
Ronald Conway Family
Allan & Carey Cooper
Jim Devere
Bernie & Virginia Diener
Warren & Pat Dodson
Ben & Pat Dolson
Terry & Andrea Donahue
Dick & Lita Dulgarian
Rudy & Joanne Feldman
Finestone & Richter
Robert Geddes
Rose Gilbert
John & Carlin Glucksman
Kristene Griffin
Paul & Gloria Griffin
John & Linda Gunn
Judd & Jeannette Henkes
Ed & Merle Hollywood
John D. & Betty Howard Family
Chris and Leslie Johnson
Ken Kaplan
Peter & Patti Kranske
Joe Lange & Marina Russman
Bob Leonard
Randall & Janell Lewis
Robert F. Lewis & Family
Art & Lindsey Lombardi
Jerry & Dorothy Long
Tony & Geri Longo
Michael B. and Lana Luftman
Darrel & Geri Mayes
Angelo Mazzone
Carl & Bette McBain
John Morris
Violet Mugler (In memory of Charles Mugler)
Matsue Muranaka
John & James Pagliuso
Hoyt Pardee
James & Beverly Peters
Carl Peterson
John & Marolyn Peterson
In memory of Brett Purdy
Gregory G. Turk for the Purdy & Turk Families
Stephen & Janet Rogers
Len & Joanne Roth
J. Patrick Rothstein
Sanbo & Kay Sakaguchi
Leonard & Cornelia Sauble
Jim & Susan Stanley
Greg Taylor
Tommy & Erile Thompson
Russ & Char Torrey
In memory of Joe Valentine
Dick & Carol Vermeil
Bob & Marion Wilson
Chuck & Annie Winner

Men's Basketball

John & Catherine Allen
John Branca Family
Buddy & Linda Epstein
Larry Erickson
Rose Gilbert (In memory of Sam Gilbert)
Jim & Sally Harrick
Ken & Di Kaplan
Nahum & Alice Lainer
John Morris
Willie & Anne Naulls
Pooh Richardson
Art & Shelly Rosenblum
Ralph & Shirley Shapiro (In honor of Sidney Wicks)
James & Sylvia Thayer
Tony & Sharon Thompson
George & Liz Vulich
In memory of Nell Wooden

Team Endowment

Carroll W. Adams
Steven Antebi
Tom & Arabelle Brown
Mark Canton
Allan B. Cooper (In memory of Harold Cooper)
Bernie & Virginia Diener
Eric Flamholtz & Yvonne Randle
Dick & Tricia Grey
Judd & Jeannette Henkes
Bruin Hoopsters
Rob Kahane
Jack & Phyllis King
David A. Neuman
James M. Peters
Frank Pritt
Jay & Maria Rappaport
Irv & Phyllis Ryder
Jim Shirley
Bill and Mary Lou Steinmetz
Team Managers Fund
Chuck & Annie Winner
Billy Woo
Jackie Wright



Brian Price

Women's Basketball

Evelyn and Eleanor Lloyd Dees



Brittani McCullough

Parker & Spencer Felix
Rose Gilbert
Stephen & Ann Goldberg
Bette McBain
Kirk Pasich & Pamela Woods
Christopher, Kelly & Connor Pasich

Men's Tennis

Glenn Bassett
Bob Garrow Family
Larry Greiner Family
Joel Hein Memorial
Jay Jackson
Steven & Ellen Jackson
William Martin Memorial
Anonymous

Men's Track & Field

Jim & Carol Collins
Estate of Ducky Drake
Carl & Bette McBain
Jake Oliva

Women's Track & Field

Victoria Cook Chapus

Baseball

Gene and Jackie Autry
James E. Brakebill Memorial
Jim Devere
Rick & Karen Ganulin
Harrold & Roslyn Ganulin Memorial
Jack Gifford
Dennis Gilbert
Mary Jo Greenberg (In memory of Hank Greenberg)
Wayne & Dixie Harding
Tracy Gifford Jones & Cameron Jones
Eric Karros
Tim Leary
Shane Mack
Jeffrey S. Moorad
Arn & Nancy Tellem
David Weiner
Team Endowment
Parents' Fund
10th Player Fund

Softball

Michele Aguilar Carlin

Men's Soccer

Frank and Kathleen Marshall
Dan Tana

Men's Water Polo

Arpad & Katherine Domyan
Irving & Betty Webb

Men's Golf

Robert Bergman Memorial
Friends of College Golf honoring:
Eddie Merrins
Byron Nelson
Greg Norman
Arnold Palmer
Lee Trevino
Jack Keller

Women's Water Polo

Ted and Jennifer Weggeland

Women's Gymnastics

Evelyn Dees
Carl & Bette McBain
Donald R. Shepherd
John and Nan Wooden

Women's Volleyball

Terence Lim

Men's Volleyball

Charles Jackson Family
James Montgomery
Al Scates
Marty Shapiro
Tupac & Moy
The Von Hagen Family

Women's Soccer

Arthur Levine & Lauren Leichtman
Shirley & Ralph Shapiro

Women's Tennis

Gayle Godwin & Bill Zaima
Ronald Marks
In Memory of David May
John Morris
Murray & Lenore Neidorf
Pete Sampras
The Sutton Sisters

Women's Golf

Bette McBain
Jackie Steinmann

Women's Rowing

Louise & Tom Jones Family
In Honor of Amy Fuller

Other Endowments

Bruin Boosters for Women's Sports/
Dr. Judith R. Holland
James Devere
Estate of Lucille Moss
Henry & Dee Stickney

Director's Circle
 (\$25,000 or more annually)

Shannon and Andy Meyers
 Barbara & Fred Miller Family
 Foundation
 Mr. Peter C. Donald & Dr. Mary K.
 Donald
 Mr. James L. Easton
 Mr. and Mrs. David J. Ellis
 Mr. and Mrs. James Ford
 Mr. David L. Griffin
 Mr. Todd Hasson
 Mr. John Horejsi
 Mr. and Mrs. Christopher D. Johnson
 Dr. Louise A. Jones & Dr. Thomas F.
 Jones



KK Clark

Mr. and Mrs. Darrin A. Klotz
 Mr. and Mrs. David A. Leveton
 Mr. Ron H. Mason
 Mr. Jeffrey D. Nathanson
 Ms. Ruth Ann Poppa
 Mr. and Mrs. Ryan S. Steelberg
 Mr. and Mrs. Jay M. Steren
 Mr. and Mrs. Bruce Stern
 Mr. and Mrs. Mark E. Strome
 Dr. and Mrs. Robert M. Webb
 Western Asset Management
 Company

Bruin Legends
 (\$12,500-\$24,999 annually)

Mr. Paul W. Ashe
 Ms. Beth E. Bennett
 Mr. and Mrs. Jon S. Berger
 Mrs. Margaret M. Bloomfield
 Mr. and Mrs. Eli J. Borok
 Mrs. Joann H. Burch
 Ms. Christina Carlino
 Mr. and Mrs. Aaron S. Cohen
 Mr. Hilary I. Condren
 Mr. Jonathan L. Congdon
 Dr. and Mrs. Lee G. Cooper
 Mr. Mark J. Cormany
 Mr. and Mrs. Scott J. Corwin
 Mr. Jeffrey D. Dintzer
 Mr. and Mrs. Patrick J. Dooley
 Ms. Liana M. Drew

Mr. Craig E. Ehrlich
 Ms. Christine Loh
 Mr. and Mrs. Jack Engel
 Mr. and Mrs. Philip J. Frengs
 Mr. and Mrs. Gregory G. Gabriel
 Mr. and Mrs. Robert Goldman
 Mr. and Mrs. Markham L. Goldstein
 Mr. Ron Gonen & Ms. Ashley
 Louderback
 Mr. and Mrs. Scott L. Graves
 Mr. and Mrs. Tom Hacker
 Mr. and Mrs. Bobby K. Hanada
 Mr. and Mrs. James M. Hassett
 Mr. Russel D. Hiles
 Ms. Janis F. Horn & Mr. Roger Ehrlich
 Mr. David Horowitz
 Ms. Sandra Hutchins
 Mr. and Mrs. Thomas J. Ivey
 Mr. and Mrs. Todd M. Katz
 Mr. and Mrs. Noboru Kawasaki
 Kelpetro Operating, Inc.
 Ms. Carol S. Kindler
 Mr. David Kohl
 Ms. Phyllis Kupferstein
 Mr. Donald O. Farkas
 Mr. and Mrs. Albro L. Lundy III
 Mr. Gerald H. Massey
 Mr. Angelo M. Mazzone III
 Mr. and Mrs. Daniel J. McLoon
 Mr. Paul Seth Miller
 Jerry and Joy Monkarsh
 Mr. and Mrs. James T. Morris
 Mr. and Mrs. Melvyn Nachman
 Mr. and Mrs. Jon W. Newby



Kelcie Wiemann

Mr. and Mrs. Stephen H. Pankow
 Dr. Robert J. Posek & Dr. Linda J.
 Rovero Posek
 Mr. and Mrs. Michael William Powers
 Mr. and Mrs. Tony N. Pritzker
 Mr. Matthew D. Rice & Mrs. Marissa
 Devins
 Mr. and Mrs. Ned K. Ryder
 Ms. Rae Sanchini
 Mr. Bruce D. Tobey
 Mr. Paul J. Shapiro
 Mr. and Mrs. Richard E. Sinaiko
 Mr. Keith Sinclair
 Dr. Barry A. Smolev
 Mr. and Mrs. Robert H. Sommers
 Mr. Jay Steinbeck



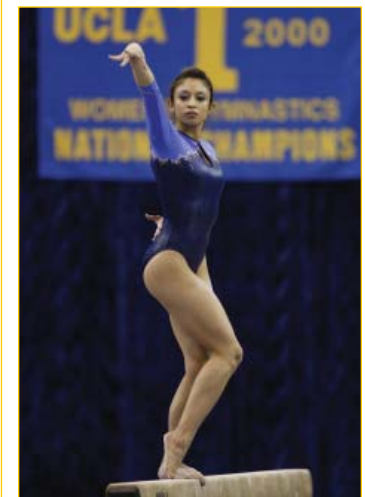
Rahim Moore

Mr. Sean Tabazadeh
 Mr. Chris M. Urner
 Mr. and Mrs. James D. Van Zanten
 Mr. and Mrs. David H. Vena
 Mr. Shaw B. Wagener
 Ms. Deborah J. Heitz
 Mr. Beryl Weiner
 Dr. Judith Bin-Nun
 Mr. Michael D. Wright

Coaches Roundtable
 (\$5,500-\$12,499 annually)

Mr. and Mrs. Hank S. Adler
 Mr. and Mrs. Allan V. Africk
 Mr. Arthur J. Alper & Ms. Cori Martin
 Dr. and Mrs. Leopold J. Andreoli
 Mrs. Elise V. Andrews
 Mr. Steven S. Antebi
 Dr. Leonard Apt
 Mr. Steven A. Aranoff
 Mr. and Mrs. James T. Armstrong
 Mr. and Mrs. Christopher Lee
 Arranaga
 Mr. and Mrs. Richard S. Atlas
 Mr. and Mrs. Bently J. Au
 Mr. Richard R. Auerbach
 Mr. Melvin N. Avanzado
 Mr. Richard Martin Bacio
 Mr. and Mrs. Julian W. Bailey
 Ms. Linda J. Baisley
 Mr. Robert M. Baker III & Wendy C.
 Berman-Baker
 Bank of America
 Mr. and Mrs. Steven J. Barlevi
 Mr. Marcos Barron III
 Mr. and Mrs. Barry Michael Baum
 Mr. and Mrs. Kenneth L. Beall
 Mr. and Mrs. Marc A. Beilinson
 Mr. and Mrs. Ron Bender
 Mr. and Mrs. Roger S. Benson
 Mr. and Mrs. Mike Berchtold
 Mr. Brad W. Berger
 Mr. and Mrs. Richard A. Bergman
 Mr. Daniel A. Bergman
 Mr. and Mrs. James R. Bergman
 Mr. and Mrs. Barry W. Berkett
 Mrs. Jodi Berman Levine & Dr. Joel
 B. Levine
 Dr. and Mrs. Gerald D. Berman

Mr. and Mrs. Michael Bermant
 Mr. Keith L. Bernstein
 Mr. Allan C. Billings
 Mr. and Mrs. Barry R. Binder
 Mr. and Mrs. Pete Blackman
 Mr. and Mrs. Michael Blasing
 Mr. and Mrs. Bruce G. Bloch
 Mr. and Mrs. Alex Boggs
 Mr. and Mrs. William G. Bonozo
 Mr. and Mrs. David G. Booth
 Mr. and Mrs. Alan S. Borstein
 Ms. Brigitte Borun-Starr and
 Mr. Randy Starr
 Mr. and Mrs. Rocky Bowman
 Mr. and Mrs. Rick M. Bradley
 Mr. and Mrs. John G. Branca
 Dr. and Mrs. David Braverman
 Mr. Skip Brittenham and
 Ms. Heather A. Thomas
 Mr. Phillip L. Brock & Ms. Kathryn W.
 Boole
 Mr. and Mrs. Jonathan B. Brooks
 Dr. and Mrs. Harry C. Brown
 Mr. and Mrs. James D. Brown
 Mr. James J. Brown
 Mr. James D. Brubaker
 Mr. and Mrs. Brad J. Brutocao
 Mr. and Mrs. Leo L. Bunnin
 Mrs. Barbara A. Burson-Turner
 and Mr. Jim Turner
 Mr. Chris T. Burt
 C. R. Cousins Inc.
 Mr. & Mrs. Maurice Calderon, Jr.
 Mr. Jesse Carrillo
 Dr. Stephen P. Carter
 Mr. Americo Cascella
 Mr. Edward Casey
 Mr. and Mrs. Michael J. Cavanagh
 Mr. Tom Chadwell
 Mr. Jerad J. Chao
 Dr. and Mrs. Richard Y. Chew
 Mr. and Mrs. Robert L. Christensen
 Mr. and Mrs. Leonard L. Chung
 Mr. and Mrs. William D. Claster
 Mr. Arthur B. Cleveland II
 Mr. David H. Cohen
 Mr. and Mrs. James A. Collins
 Mr. and Mrs. John F. Cooke
 Mr. and Mrs. Craig A. Cooper
 Dr. Stephen H. Cooper & Dr. Donna F.
 Cooper



Vanessa Zamarripa

Mr. and Mrs. Kenneth C. Coopman
 Mr. and Mrs. Bruce C. Corwin
 Mr. Michael Couch
 Dr. Stephen D. Covington
 Mrs. Ruth Ann Cowan
 Mr. and Mrs. Bob Crestani
 Ms. Thelma L. Culverson
 Mr. and Mrs. Peter T. Dalis
 Mr. William H. Dandridge III
 Dr. and Mrs. David E. Dann
 Ms. Sandy M. Davis
 Mr. and Mrs. David S. De Vito
 Mr. and Mrs. Frederick B. Denitz
 Sharon and Bruce Depriester
 Mr. and Mrs. Asim K. Desai



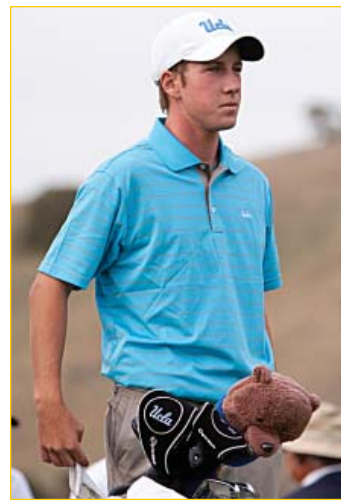
Alex Crabill

Ms. Kristina Deutsch
 Ms. Gina Deutsch-Zakarin
 Mr. Mark Zakarin
 Mr. and Mrs. John D. Diemer
 Mr. and Mrs. Warren L. Dodson
 Mr. Jay S. Dolinky
 Mr. Ronald M. Dorfman
 Mr. D. Scott Duncan & Ms. Rosmary Wilde
 Mr. Roy Durham
 Mr. and Mrs. David S. Eaton
 Mr. and Mrs. Sanford M. Ehrmann
 Mr. and Mrs. Eric Eisner
 Mr. William J. Ellison and Dr. Naomi L. Ellison
 Mr. and Mrs. Gregory M. Emi
 Mr. Buddy Howard Epstein
 Mr. and Mrs. Richard M. Estrada
 Mr. and Mrs. Herschel R. Evans
 Mr. and Mrs. Michael A. Farr
 Mr. and Mrs. Lawrence A. Fischer
 Mr. William B. Fitzgerald & Ms. Sandra Krause
 Dr. Eric G. Flamholtz & Dr. Yvonne E. Randle
 Mr. and Mrs. Ronald M. Florance
 Mr. Michael Edward Flynn
 Mr. Jeffrey Forer
 Dr. and Mrs. Richard A. Foullon
 Fox Sports Net Sales
 Mr. Gregory B. Francois & Dr. Annamarie M. Francois
 Mr. Christopher M. Frank
 Mr. and Mrs. Charles J. Frankowski

Mr. Ron D. Fukushima
 Mr. Daniel W. Gaby
 Dr. Daniel N. Galaif & Mrs. Barbara I. Shubin-Galaif
 Mr. and Mrs. Thomas C. Gallagher
 Mr. Gus Garcia
 Mr. and Mrs. David S. Garelick
 Mr. and Mrs. Jonathan Garson
 Mr. and Mrs. Lee A. Garson
 Mr. Randy P. Gaschler
 Mr. and Mrs. Gregory L. Geiser
 Mr. and Mrs. George J. Geldin
 Mr. and Mrs. Charles Gelfand
 Mr. Michael B. Geller
 Mr. Mark R. Genender
 Dr. and Mrs. Mark A. Gerard
 Mrs. Rose R. Gilbert
 Mr. and Mrs. Richard I. Gilchrist
 Mr. and Ms. Vincent J. Giovinnazzo
 Mr. Robert E. Glenn
 Mr. and Mrs. Bruce S. Glickfeld
 Dr. Christopher S. Go
 Mr. and Ms. William Goddard IV
 Mrs. Ruth M. Goldberg
 Mr. Donald A. Goldman & Ms. Valerie Lezin
 Mr. Lee Goldman & Mrs. Lois H. Kitzes Goldman
 Mr. Irwin D. Goldring & Dr. Clarann J. Goldring
 Mr. and Mrs. Ned S. Goldstein
 Mr. and Mrs. Donald S. Goodman
 Mr. and Mrs. John F. Goodman
 Dr. and Mrs. James D. Gordon
 Mr. and Mrs. Rafi Gordon
 Mr. Daniel L. Gould
 Ms. Jane L. Grant
 Mr. and Mrs. Irwin L. Greenberg
 Mr. and Mrs. Richard E. Grey
 Mr. and Mrs. Paul E. Griffin, Jr.
 Mr. John M. Gustafson & Ms. Ann Daly
 Mr. Roger G. Halfhide & Ms. Patricia A. McVerry
 Dr. and Mrs. Gregory J. Hanker
 Mr. and Mrs. Eric Hansen
 Harbor Distributing, LLC
 Mr. and Mrs. L. Wayne Harding
 Mr. and Mrs. Matthew R. Harelson
 Mr. Joe Hartman
 Ms. Melinda L. Hayes & Mr. John M. Yamamoto
 Mr. Erik Morgan Helmstetter



Nikola Dragovic



Gregor Main

Mr. and Mrs. Frank W. Henry
 Mr. and Mrs. Craig N. Hentschel
 Mr. Robert W. Herdman
 Mr. and Mrs. Eugene B. Herley
 Mr. and Mrs. Robert J. Higa
 Dr. Marianne G. Hill & Dr. David L. Hill
 Mr. and Mrs. Andrew William Hill
 Mr. Frank D. Hintze
 Ms. Sharann M. Hisamoto
 Mr. and Mrs. Thomas P. Hodgkiss
 Mr. and Mrs. Robert M. Hofeditz
 Mr. & Mrs. Gary S. Holcomb, Jr.
 Mr. and Mrs. Brian Holmes
 Dr. Allan and Roslyn Holt Swartz
 Mr. and Mrs. Paul A. Holtzman
 Mr. and Mrs. Leo J. Howard
 Howard Family Trust
 Mrs. Blanche Howard
 Mr. and Mrs. Bradley D. Howard
 Ms. Marcia H. Howard
 Mrs. Heather Howley
 Mr. Fred Hughes, Jr.
 Mr. and Mrs. Andrew W. Hyman
 Mr. and Mrs. George Inadomi
 Mr. Brian K. Iriye
 Mr. and Mrs. Alan L. Isaacman
 Mr. and Mrs. David E. Isenberg
 Dr. Laurant Jacks
 Mr. and Mrs. Steven Jackson
 Mr. and Mrs. Eric Jacobsen
 Mr. and Mrs. Laurence D. Jacobson
 Mr. Matthew F. Jacobson
 Ms. Katherine C. James
 Mr. and Mrs. Jerry Janger
 Dr. and Mrs. J. Patrick Johnson
 Mr. Darryl F. Johnson
 Mr. Gregory W. Jones
 Mr. Sheldon L. Kadish & Ms. Mary A. Rosenfeld
 Mr. Anthony A. Kafesjian
 Mr. and Mrs. Ken Kaplan
 Mr. Matthew A. Kaplan & Ms. Catherine Myman-Kaplan
 Mr. and Mrs. John F. Karubian
 Mr. and Mrs. Andrew E. Katz
 Mr. Stephen J. Kaufman
 Mr. and Mrs. Herbert G. Kawahara
 Mr. and Mrs. Marvyn E. Kaye
 Ms. Rose M. Ketchoyan
 Mr. and Mrs. Stanley K. King
 Mr. and Mrs. Dean J. Kitchens

Mr. David Jeffrey Klein & Ms. Song N. Cho
 Mr. Randal I. Klein
 Betsy Wood Knapp & Bud T. Knapp III
 Dr. Jon A. Kobashigawa & Dr. Carol L. Kawata
 Ms. Hillari Koppelman
 Mr. and Mrs. Richard I. Koral
 Ms. Amy L. Kossoris
 Mr. and Mrs. Howard D. Krepack
 Mr. and Mrs. Lawrence Kritzer
 Mr. Jason Kummer
 Mr. and Mrs. Gerald A. Kurland
 Mr. Todd H. Kurtin
 Mr. and Mrs. Glenn A. Kurtz
 Mr. Gary Lainer & Dr. Lisa B. Lainer
 Mr. Brian D. Lakamp
 Mr. and Mrs. David E. Landon
 Mr. and Mrs. Addison Larson
 Dr. and Mrs. Richard G. Leff
 Ms. Cindy Lesonsky
 Dr. Michael J. Levi
 Dr. Joel B. Levine & Mrs. Jodi Berman Levine
 Mr. Arthur E. Levine & Ms. Lauren B. Leichtman
 Mr. and Mrs. Robert F. Lewis
 Mr. Randall W. Lewis & Ms. E. Janell Thornton-Lewis
 Mr. and Ms. Steven R. Lewis
 Dr. and Mrs. Harley R. Liker
 Mr. and Mrs. Melvin D. Lindsey
 Mr. and Mrs. Victor L. Liotta
 Mr. and Mrs. Louis A. Lipofsky
 Mr. William A. Little III
 Mr. and Mrs. Arthur P. Lombardi
 Mr. David D. Lopez
 Mr. and Mrs. Paul D. Losey
 Mr. David E. Loyd
 Mr. John R. Lubbers
 Mr. Alexander G. MacDougall
 Ms. Joan Macpherson
 Mr. Michael H. Malik
 Mr. Anthony Malk
 Mr. Steven P. Mann
 Mr. and Mrs. Don L. Manning
 Mr. and Mrs. John R. Manuck
 Mr. and Mrs. John T. Mapes
 Mr. Ernest A. Marchosky
 Mr. and Mrs. Garo Mardirossian
 Mr. Frank W. Marshall & Ms. Kathleen Kennedy



Michael Stephens

Mr. and Mrs. Kenneth R. Martin
 Carrie & Kevin Martin
 Dr. Richard Massoth & Dr. Lise
 LaFlamme
 Mr. and Mrs. Harold M. Matheson
 Mr. Fred and Mrs. Marjie Mautner
 Mrs. Geraldine M. Mayes
 Mr. and Mrs. Michael McAlister
 Ms. Karen M. Mc Clain
 Mr. and Mrs. Matthew S. McNicholas
 Mr. and Mrs. Gerald E. Measer
 Ms. Helen S. Mekjian
 Mr. and Mrs. Paul P. Merage
 Mr. and Mrs. Richard P. Merage
 Mr. and Mrs. Brett S. Messing



Men's Tennis Coach Billy Martin

Mr. Lowell J. Milken
 Mr. and Mrs. Michael E. Miller
 Mr. Reed A. Miller
 Mr. Spencer M. Miller
 Mr. and Mrs. Charles W. Mills
 Ms. Gail Mintz-Goodman
 Mr. Gary Minzer
 Mr. and Mrs. Saul Minzer
 Mr. and Mrs. Randall G. Moler
 Mr. and Mrs. Wendell P. Monello
 Mr. John L. Morianity
 Mr. John G. Morris
 Mr. and Mrs. Matt Moschetti
 Mr. and Mrs. Kent Y. Mouton
 Dr. and Mrs. Peter K. Moy
 Mr. Christopher M. Mukai & Mrs.
 Carolyn M. Schmeltzer
 Mr. Charles M. Muranaka
 Mr. Harry T. Muranaka
 Mr. Russell T. Muranaka
 Mr. and Mrs. Don S. Myers
 Dr. and Mrs. Norman S. Namerow
 Mr. and Mrs. Don Alden Nelson
 Mr. David A. Neuman
 Mr. Peter G. Nguyen
 Dr. Chau T. Nguyen
 Mr. and Ms. Lanny J. Noveck
 Mr. and Mrs. Jeff R. Nuruki
 Mr. David W. Obbage
 Mr. John C. O'Connor
 Mr. and Mrs. Budge Offer
 Dr. and Mrs. Richard A. Ofstein
 Mr. and Mrs. Milton E. Olin, Jr.
 Ms. Susan J. Ollweiler

Mr. Casey Olson
 Mr. and Mrs. Jerry Orefice
 Mr. and Mrs. Ronald D. Ormand
 Mr. and Mrs. Richard M. Pachulski
 Mr. and Mrs. James J. Pagliuso
 Mr. John Paley
 Mrs. Vicki Pardee
 Mr. and Mrs. Stephen C. Pasarow
 Mr. Kirk A. Pasich & Ms. Pamela M.
 Woods
 Mr. Peter T. Paterno
 Mr. Shawn S. Patt
 Dr. Byron Patterson
 Mr. and Mrs. Peter J. Pellizzon
 Mr. and Mrs. Timothy M. Pennington III
 Mr. Murray S. Pepper & Mrs. Vicki L.
 Reynolds
 Mr. and Ms. Gregory F. Perlman
 Mr. and Mrs. Robert M. Pernecky
 Mr. John J. Peterson, Jr.
 Dr. Patricia E. Phelps & Dr. Michael E.
 Phelps
 Mr. and Mrs. Kevin J. Pluimer
 Dr. Kathleen W. Pojunas
 Mr. and Mrs. Irvin H. Polashuk
 Mr. and Mrs. Jeffrey A. Pope
 Dr. and Mrs. Richard Posthuma
 Mr. Paul L. Presburger & Ms. Valerie
 Chesaux
 Mr. and Mrs. Michael L. Preston
 Price Raffel Lowman Insurance
 Mr. and Mrs. Arnold J. Price
 Mr. Michael A. Price
 Dr. and Mrs. Jacob Rajfer



Men's Volleyball Coach Al Scates

Mr. Lary A. Rappaport &
 Ms. Ellen L. Isaacs
 Rashman Corporation
 Mr. and Mrs. Dale R. Rasmussen
 Mr. Kevin Ray
 Mr. and Mrs. Harvey Reichard
 Mr. and Mrs. Victor E. Reskin
 Mr. and Mrs. John H. Richardson
 Dr. and Mrs. James J. Roach, Jr.
 Mr. Alan E. Robbins
 Mr. and Mrs. Mike Roberts
 Mr. James W. Robertson & Mrs. Kim
 M. Robertson
 Mr. and Mrs. Peter R. Rodgers
 Mr. John Rodway
 Mr. and Mrs. Stephen E. Rogers



Ben Hohl

Mr. and Mrs. Bruce W. Rognlien
 Mr. and Mrs. David L. Rognlien
 Mr. and Mrs. James A. Rosen
 Mr. Harold L. Rosenberg
 Mr. and Mrs. Arthur L. Rosenblum
 Mr. Bobby Roth & Ms. Leslie Z. Tobin
 Mr. Joseph E. Roth
 Mr. and Mrs. Leonard J. Roth
 Mr. and Mrs. Myron I. Roth
 Mr. and Mrs. Mark S. Rowen
 Mr. and Mrs. Jim Rowlands
 Mr. Scott E. Rudkin
 Mr. Bill Ryan
 Mr. Dean B. Rydquist &
 Ms. Donna Rydquist
 Mr. and Mrs. Nicholas P. Saggese
 Mr. Frank Sandelmann
 Mr. and Mrs. Richard V. Sandler
 Ms. Monica Santos Tantraphol & Mr.
 Michael K. Tantraphol
 Mrs. Paula R. Savett
 Mr. Fred Schiffman
 Mr. Paul D. Schoen
 Mr. and Mrs. Eric N. Scholnick
 Mr. Donald R. Schort, Jr. & Dr. Nancy
 S. Schort
 Mr. and Mrs. Art Schumann
 Mr. and Mrs. Robert Seizer
 Dr. and Mrs. Michael J. Sellwood
 Mr. Garth K. Setoguchi
 Mr. and Mrs. Jeffrey A. Seymour
 Mr. Steve W. Shaffer & Mrs. Linda M.
 Liu-Shaffer
 Mr. and Mrs. Ralph J. Shapiro
 Mr. and Mrs. Jerry Shapiro
 Mr. Jeffrey S. Siegel
 Ms. Lynne G. Silbert & Dr. Seth M.
 Weingarten
 Mr. and Mrs. Jason J. Silletti
 Ms. Marilyn Silva-Lund & Mr. David H.
 Lund
 Mr. Nelson Silver
 Dr. and Mrs. Alan M. Singer
 Mr. and Mrs. Gary J. Singer
 Dr. Ronald L. Singer
 Mr. Herbert F. Slavin
 Mr. Theodore J. Slavin
 Mr. Mitchell Smelkinson
 Mr. Greg Smelser
 Judge and Mrs. Terry Smerling
 Mr. and Mrs. Robert A. Smith III

Mr. Andrew G. Smith
 Mr. and Mrs. David A. Smith
 Mr. and Mrs. Timothy J. Smith
 Ms. Vicki R. Solmon
 Mr. Stephen W. Solomon & Ms. Ellen
 Pardo
 Mrs. Kirsten L. Sommer
 Mr. Michael G. Soo Hoo
 Mr. Rolando Sotelo
 Mr. and Mrs. Alex M. Sotomayor
 Mrs. Shannon Sparling
 Abdul-Wahab
 Mr. and Mrs. Alex Spataru
 Mr. and Mrs. David E. Sperling
 Mr. Jack Spound
 Mr. and Mrs. Jeffrey R. Stark
 Mr. and Mrs. Charles W. Steinmetz
 Mr. and Mrs. Eric J. Sterling
 Mr. and Mrs. W. Rod Stern
 Dr. and Mrs. Gary D. Stone
 Mr. Douglas W. Stone
 Mr. Brim E. Stonebraker
 Mr. and Mrs. Milton A. Stumpus
 Mr. Mike Sullivan
 Mr. Paul S. Takeda
 Tamura & Espinosa Medical Group
 Mr. and Mrs. Edward M. Tannenbaum
 Dr. and Mrs. Donald O. Fareed
 Ms. Jennifer L. Taylor
 Dr. and Mrs. Keith K. Terasaki
 Mr. Gus W. Theisen
 Mr. Douglas N. Thomson
 Mr. and Mrs. Michael C. Timmons
 Dr. and Mrs. Barry H. Tischler
 Mr. and Mrs. J. David Tracy
 Mr. Jose R. Trujillo
 Elinor and Rubin Turner
 Roderick and Michele Turner
 Ms. Kimberly D. Turner
 Dr. Nancy Tyre &
 Dr. Anastacio Vigil
 Mr. Daniel P. Vest
 Mr. and Mrs. Raymond J. Walczynski
 Mr. and Mrs. Duffy J. Waldorf
 Mr. Nate Walker
 Dr. Thomas John Waskiewicz
 Mr. & Mrs. Robert B. Webster, Jr.
 Mr. and Mrs. Keith W. Webster
 Wedgewood Enterprise Corporation
 Mr. Daniel Weinstein
 Mr. and Mrs. Walter L. Weisman



UCLA Rowing Coach Amy Fuller Kearney

Mr. Richard L. Weisman
 Dr. and Mrs. Andrew B. Weiss
 Mr. and Mrs. Dennis E. White
 Mr. J. A. White
 Mr. Charles F. Willson, Jr.
 Mr. Jaime S. Winkler
 Mr. and Mrs. Charles Winner
 Mr. Al Wintringham
 Dr. Steven G. Wong & Ms. Christina F. Pitcher
 Mr. and Mrs. Michael S. Wong
 Mr. and Mrs. Robert Woo
 Mr. Travers D. Wood & Ms. Karen S. Merickel
 Dr. Thomas F. Wuesthoff & Mrs. Catherine Bachman-Wuesthoff



Samantha Camuso

Mr. and Mrs. Gene Yee
 Mr. Hammad H. Zaidi
 Dr. and Mrs. Peter D. Zeegen
 Mr. and Mrs. Walter Zifkin
 Mr. and Mrs. Richard S. Ziman
 Mr. and Mrs. Mel Ziontz
 Dr. and Mrs. Arnold H. Zukow
 Mr. Steve Zwilling

Bruin All-American (\$3,500-\$5,499 annually)

Mr. and Mrs. Robert P. Abramson
 Mr. Christopher R. Aitken
 Mr. and Mrs. Michael M. Ashley
 Mrs. Barbara Behnke-Crouch & Mr. Richard B. Crouch
 Mr. & Mrs. Clemente Beltran, Jr.
 Mr. Rod S. Berman
 Mr. and Mrs. Dilip K. Bhavnani
 Mr. and Mrs. Stephen Block
 Ms. Jill A. Brody
 Mr. and Mrs. Todd Brown
 Mr. Mark A. Carlino
 Ms. Christen R. Carter
 Mr. and Mrs. Richard A. Colvin
 Mr. and Mrs. Thomas A. Comstock III
 Mr. and Mrs. Stephen J. Craig
 Mr. and Mrs. Mark W. Cray
 Ms. Ethel M. Cullom
 Mr. and Mrs. Don S. Dalis
 Mr. and Ms. Hugo D. de Castro
 Mr. Jeremy P. Debruin

Mr. and Mrs. John Desena
 Mrs. Sharon Drake
 Mr. and Mrs. Duke Dulgarian
 Mr. David G. Dundas
 Mr. Stephen Ettinger
 Mr. David B. Farkas
 Mr. Shane M. Farkas
 Mr. David J. Finkel
 Mr. David W. Flamberg
 Mr. Arthur L. Frazier, Jr. & Ms. Deidre A. Colly
 Mr. and Mrs. Noyan Garemani
 Mr. and Mrs. Manuel Glaser
 Mr. and Mrs. Charles L. Goldberg
 Mr. and Mrs. John B. Golper
 Mr. and Mrs. Kenneth A. Graiwer
 Mr. and Mrs. Laurence B. Green
 Mr. and Mrs. Steven P. Guerrero
 Mr. David Han
 Mr. and Mrs. John T. Hastings
 Mr. Daniel P. Horwitz & Mrs. Barbara Resnick-Horwitz
 Mr. and Mrs. Paul Po-Yen Huang
 Dr. and Mrs. Gary L. Hufford
 Ms. Judy Hwee &
 Dr. Gregory A. Maglinte
 Dr. Anne M. Ichiuji & Mr. Todd M. Humphrey
 Mr. and Mrs. William K. Ito
 Mr. and Mrs. Harvey G. Joffe
 Mr. and Mrs. Chris Johnson
 Ms. Jackie L. Jong
 The Honorable Craig S. Kamansky
 Mr. and Mrs. Jay W. Kang



Karina Silva

Mr. and Mrs. Richard T. Kawasaki
 Mr. Larry M. Kent
 Mr. Eric Y. Kizirian & Ms. Christine Zarifian
 Mr. Derek M. Kroeger
 Mr. and Mrs. Larry H. Kuromiya
 Mr. and Mrs. Charles H. La Franchi
 Mr. and Mrs. David H. Landy
 Mr. and Mrs. Michael Lang
 Mr. and Mrs. Christopher M. Leavell
 Mr. John A. Leupp
 Mr. Mark B. Levey & Ms. Pearle Rae
 Dr. and Mrs. Gary E. Marsh
 Mr. John Martell
 Mr. and Mrs. Fred C. Mc Millan
 Mehlig Family Foundation



Jamal Alston

Mr. and Mrs. Mitchell J. Miliias
 Mr. and Mrs. Milton B. Miller
 Mr. Thomas L. Molnar
 Dr. Allen M. Morimoto
 Dr. Brian T. Nagai
 Mr. Kevan Q. Newton
 Mr. and Mrs. Randall M. Onishi
 Mr. and Mrs. Peter J. Onusconich
 Mr. Jeetil J. Patel
 Mr. and Mrs. David L. Patnoe
 Mr. and Mrs. Michael E. Pernecky
 Mr. and Mrs. Jeffrey S. Pop
 Mr. and Mrs. Stephen Queen
 Ms. Sandy Radicevic
 Dr. and Mrs. Peter L. Reiher
 Mr. and Mrs. Denis I. Rosenberg
 Mr. Tom M. Ryan
 Ms. Candice C. Saito & Mr. Richard B. Malamud
 Mr. and Mrs. Van N. Schultz
 Mr. Gary N. Schwartz & Ms. Kathy L. Toledo
 Mr. and Mrs. Jeffrey S. Severa
 Mr. and Mrs. Corey E. Shapoff
 Mr. Brett M. Shaves
 Dr. Ronald G. Shiraishi
 Mr. and Mrs. Peter T. So
 Dr. James J. Tolich
 Mr. and Mrs. Michael J. Vallens
 Mr. Earle R. Vaughan III
 Mr. and The Honorable William M. Wardlaw, Sr.
 Mr. Mark B. Webster
 Mr. Chad W. Wehba
 Mr. and Mrs. Robert William Weiler
 Ms. Susan J. White
 Mr. and Mrs. David T. Wilson
 Dr. and Mrs. Roger S. Wolk
 Mr. and Mrs. Gary K. Yamamoto
 Mr. and Ms. James R. Yount
 Ms. Amy D. Zaret
 Dr. and Mrs. Stefan I. Zweig

Bruin Athletic Club-Sustaining (\$1,700-\$3,499 annually)

Mr. Khaled Abdelwahed & Ms. Sofia Escamilla
 Mr. and Mrs. Sam K. Abdulaziz
 Mr. and Mrs. Bradley Abeson

Dr. and Mrs. Donald A. Adams
 Mr. and Mrs. Timothy R. Adams
 Mr. and Mrs. Alfonso Aguilera
 Mr. and Mrs. Anthony W. Albany
 Mr. and Mrs. Scott W. Alderton
 Mr. Leonard Alexander & Mrs. Marlene Schiff-Alexander
 Dr. Stanley J. Alexander
 Ms. Dianne Alford-Gaffaney & Mr. Michael Alford
 Mr. and Mrs. Edward R. Alvarez
 Mr. and Mrs. Paul Amante, Jr.
 Mr. Keith Amantia & Dr. Monica R. Amantia
 Ms. Ellen Misako Amasaki
 Mr. D. Maiorano
 Mr. Ted Amlin
 Mr. and Mrs. Stanley W. Anderson
 Ms. Laurie J. Anderson
 Mr. and Mrs. Stanley W. Anderson
 Mr. and Mrs. Donald S. Andrews
 Dr. and Mrs. Richard A. Andrews
 Mr. Craig D. Andrus & Ms. Dianna O'Doherty
 Anheuser-Busch Companies Inc.
 Dr. and Mrs. E. Peter Anzaldo
 Mr. and Mrs. Sheldon Appel
 Dr. and Mrs. David H. Armstrong
 Mr. and Mrs. Kenneth M. Arndt
 Dr. and Mrs. David E. Atkinson
 Mr. Brian J. Au
 Mr. and Mrs. Marshall J. August
 Ms. Donna Aulenta
 Dr. and Mrs. George W. Balfour
 Mrs. Noella Ballenger
 Dr. and Mrs. Harold E. Barkate
 Mr. Rodney K. Barker
 Ms. Natalie Barrios
 Mr. and Mrs. Thomas H. Barron
 Dr. and Dr. Bruce Baumgarten
 Mr. and Mrs. Nicolas Bazarevitsch
 Mrs. Dixie L. Bear
 Mr. and Mrs. Michael Bearman
 Ms. Melissa M. Beck & Mr. Daniel O. Pugh
 Mr. and Mrs. Barry L. Beckett



Erica Tukiainen

Mr. and Mrs. Michael P. Beecher
 Mr. Keenan Behrle & Ms. Kathleen Flanagan
 Mr. and Mrs. Jesse Beim
 Dr. and Mrs. James D. Beller
 Mr. and Mrs. Richard L. Benfield
 Mr. and Mrs. Dennis M. Benko
 Mr. Aaron Benzenbower
 Mr. and Mrs. Joel M. Bergenfeld
 Mr. and Mrs. David Eliot Bertram
 Mr. and Mrs. Michael Bermant
 Mr. and Mrs. Ben Bernie
 Mr. and Mrs. Kevin C. Berryman
 Ms. Janet L. Bescoby
 Mr. Hani Bhimji
 Mr. and Mrs. Bruce L. Bialosky



Ashlea McLaughlin

Dr. Scott E. Bianchi
 Mr. and Mrs. Mark S. Blackman
 Mr. and Mrs. Gary B. Blackwell
 Dr. and Mrs. Alan C. Bleier
 Dr. and Mrs. Kenneth H. Bleifer
 Mr. Craig S. Bloomgarden
 Mr. Peter J. Blowitz
 Mr. Jay Boberg & Ms. Alison B. Cooper
 Mr. and Mrs. David Bock
 Mr. Richard E. Boddie
 Ms. Diane Bonfiglio-Taylor & Mr. Drew W. Taylor
 Mr. and Mrs. David J. Bornstein
 Mr. and Mrs. Lawrence Borys
 Ms. Patricia Bowdish
 Mr. Rob S. Bowman
 Ms. Virginia C. Boykin
 Ms. John Bradley
 Mr. and Mrs. Mark A. Bragg
 Mr. John J. Bratman
 Mr. & Mrs. Walter M. Brennan, Jr.
 Mr. Eric Bresler
 Mr. and Mrs. Sandy Bresler
 Dr. William W. Brien & Dr. Connie A. Brien
 Mr. and Mrs. Terry Brigham
 Mr. and Mrs. Raymond H. Brogliatti
 Mrs. Mary Brohard
 Mr. and Mrs. Gerald M. Bronstein
 Mr. and Mrs. Jeffrey E. Brothers
 Mr. and Mrs. James E. Brown
 Dr. and Mrs. David A. Bruckner

Mr. and Mrs. William S. Brunsten
 Mr. Mark E. Bucklin & Ms. Lucia E. Coyoca-Bucklin
 Dr. and Mrs. Steven D. Bunyard
 Mr. and Mrs. Brian Burmeister
 Dr. and Mrs. Joshua L. Burnam
 Mr. and Mrs. Simon W. Burrow
 Ms. Denise N. Bustamante & Mr. Dermot M. Martin
 Mr. Robert A. Butler
 Mr. Barry W. Cadwallader
 Mr. and Mrs. Bradley C. Call
 Mr. and Mrs. Mario Camara
 Mr. and Mrs. Gregory D. Campbell
 Mr. Joseph M. Cannon & Ms. Gloria M. Noh Cannon
 Mr. Howard T. Caplan & Mrs. Kathleen A. Salmons
 Ms. Donna M. Capraro
 Ms. Adele R. Carlson
 Mr. and Mrs. Paul E. Carlton
 Mr. and Mrs. George N. Carmack
 Chancellor Emeritus & Mrs. Albert Carnesale
 Dr. and Mrs. Frederick J. Carr III
 Mr. Michael J. Cartusciello, Sr.
 Mr. Jose M. Castillo
 Dr. Vincent E. Castro
 Mr. Alvaro A. Castro
 Ms. Esther Castruita
 Cataldo Diversified Services
 Ms. Susanne E. Cesari
 Mr. and Mrs. Donald T. Chadwick



Stephanie Kono

Mr. Gerald L. Chaleff & Ms. Patricia H. Benson
 Mr. and Mrs. Stephen M. Chang
 Mr. and Mrs. Larry F. Chaplin
 Mr. and Mrs. Morris I. Chernick
 Dr. Anthony B. Chin
 Mr. and Mrs. Arthur Chinski
 Mr. and Mrs. Gaylaid W. Christopher
 Mr. Steven Chroman
 Mr. and Mrs. Morgan Chu
 Mr. and Mrs. Marvin Cichy
 Ms. Susan Clamage & Mr. Arthur I. Zweben
 Mrs. Rosalie Clark
 Mr. & Mrs. Edmund W. Clarke, Jr.
 Mr. and Mrs. R. Scot Clifford



Lauren Cheney

Mr. Johnston Co & Ms. Gina N. Buis
 Mr. Joshua M. Cobb
 Dr. and Mrs. Robert L. Cohen
 Mr. and Mrs. Charles W. Cohen
 Dr. Joni Ilene Cohen & Dr. Martin J. Cohen
 Mr. Brian B. Cohen & Ms. Deborah H. Bernstein
 Mr. and Mrs. Melvin Cohen
 Mr. Theodore N. Cole, Jr.
 Mr. and Mrs. Louis Colombano
 Mr. Curtis H. Colon
 Mrs. Alba S. Colorado
 Ms. Laurie A. Content
 Mr. and Mrs. David A. Cooper
 Mr. and Mrs. James P. Cosgrove
 Mr. and Mrs. Marshall G. Cox
 Mrs. Merrilee M. Craig
 Mr. and Mrs. Peter M. Craig
 Mr. Michael A. Crasnick
 Mr. and Mrs. William B. Creim
 Ms. Suzanne Crowell
 Mr. and Mrs. Francis J. Cunningham III
 Mr. and Mrs. Craig A. Curtis
 Mr. and Mrs. Stuart N. Cypherd
 Mr. Timothy L. Cyr
 Mr. Frank Damon & Dr. Linda L. Damon
 Mr. and Mrs. Stuart Daniels
 Mr. Donald R. Davis
 Mr. and Mrs. Tim DeCinces
 Dr. Mary A. Delsol & Mr. Daniel P. Dobon
 Mr. Alan R. Demby
 Mr. and Mrs. Marvin A. Demoff
 Mr. Richard C. Dempsey
 Mr. and Mrs. John W. Devereux
 Mr. Lawrence A. Diamant
 Mr. and Mrs. Mitchell J. Dimkich
 Mr. and Mrs. Ronald Drucker
 Mr. and Mrs. Scott B. Dubchansky
 Mr. and Mrs. John M. Dunkin
 Ms. Melissa K. Eaves & Mr. Hayden C. Eaves III
 Mr. Alan I. Edrick
 Mr. & Mrs. John S. Edwards, Jr.
 Dr. and Mrs. Keith C. Edwards
 Mr. and Mrs. Darren R. Edwards
 Mr. Robert L. Eichel
 Mr. Michael W. Eichenseer

Mr. Andrew L. Ellis
 Mr. and Mrs. David J. Epstein
 Mr. and Mrs. Steven F. Epstein
 Mr. Robert G. Erzen
 Ms. Sofia Escamilla & Mr. Khaled Abdelwahed
 Ms. Virginia M. Ettinger
 Mr. and Mrs. Robert Faeber
 Dr. and Mrs. Neil D. Fagen
 Dr. Peter M. Falk & Dr. Rena E. Falk
 Mr. Daniel Famulare
 Mr. and Mrs. John N. Farhood
 Mr. & Mrs. George T. Farmer, Jr.
 Mr. and Mrs. William R. Feiler
 Dr. and Mrs. Mark E. Feinerman
 Mr. and Mrs. Robert Feinerman
 Mr. Daniel G. Felding, Jr.
 Mrs. Abbie Feldman
 Mr. and Mrs. Marty A. Feldman
 Dr. and Mrs. Richard D. Ferkel
 Mr. Scott J. Figge
 Mr. and Mrs. Donald L. Finch II
 Mr. Robert S. Fine
 Dr. Sydney M. Finegold
 Mr. and Mrs. Francis E. Fitzpatrick, Jr.
 Dr. David L. Fogelson
 Ms. Gail E. Meyer
 Mr. Cornelius L. Fong
 Mr. O.J. Freed
 Mr. and Mrs. Scott A. Freeman
 Mrs. Joan R. Freise
 Mr. and Mrs. Dennis W. Fried
 Mr. and Mrs. Elliott Tad Friedman
 Mr. Kenneth J. Friedman
 Mr. and Mrs. Lester J. Friedman
 Mr. Leonard M. Friedman
 Mr. and Mrs. Richard A. Friedman
 Mr. and Mrs. Francis T. Fruitt
 Dr. Gary M. Fuchs
 Mr. Jon W. Fullinwider
 Mr. Michael G. Furlong
 Mr. and Mrs. Richard D. Furman
 Ms. Catherine R. Gallardo
 Mr. Ryan A. Gallo
 Mr. William O. Gamble III
 Mrs. Sandra Ganulin
 Ms. Andrea A. Garai
 Mr. Ronald D. Garber
 Dr. George H. Garcia
 Miss Neerada Garcia



Dicey McGraw

Mr. Stephen J. Gasca
 Mr. and Mrs. Mark L. Gastineau
 Mr. and Mrs. Roy E. Gaunt
 Harland and Carol Gaynor
 Mr. Eric A. Gaynor
 Mr. and Mrs. Clinton Gee
 Mr. and Mrs. F. Gordon Gelfond
 Mr. and Mrs. Russell C. Gerns
 Mr. and Mrs. Robert S. Gianelli
 Mr. and Mrs. Jeffrey S. Gilbert
 Mr. and Mrs. Jeffrey R. Gillette
 Mr. and Mrs. Bertrand I. Ginsberg
 Mr. and Mrs. Morris M. Glass
 Mr. and Mrs. Jay S. Glick
 Mr. and Mrs. Delbert M. Goehner
 Mrs. Charlotte Gold



Andrea Remynse

Mr. and Mrs. Randy M. Gold
 Mr. and Mrs. Sy Goldberg
 Mr. and Mrs. Earl L. Goldberg
 Mr. Kenneth L. Goldman
 Mr. & Mrs. Richard Gombos, Jr.
 Mr. Benjamin Gonzalez
 Mr. and Mrs. Steven C. Good
 Ms. Gayle L. Goodman
 Mr. David R. Gordon
 Mr. and Mrs. Andrew Gordon
 Dr. and Mrs. Seymour F. Gorelick
 Mr. and Mrs. James P. Gottlieb
 Mr. and Mrs. Jerome Gould
 Mr. and Mrs. Kent V. Graham
 Mr. and Mrs. Norin T. Grancell
 Mr. Marshall Graves
 Dr. and Mrs. Joseph W. Gray
 Mr. and Mrs. William Greaney, Jr.
 Mr. and Mrs. Howard Green, Jr.
 Mr. and Mrs. Dennis Green
 Mr. Steve Green
 Dr. and Mrs. Brian K. Greenberg
 Mr. Scott W. Greenberg
 Judge & Mrs. Larry M. Greenblatt
 Mr. and Mrs. Gary B. Grey
 Mr. and Mrs. Harold E. Grossman
 Mr. and Mrs. Rick L. Grossman
 Mr. and Mrs. James M. Grossman
 Mr. Derek W. Gullage
 Mr. and Mrs. Barry G. Gumbert
 Dr. Ken Gunn
 Mr. and Mrs. William H. Gustafson
 Mr. and Mrs. Les C. Guthrie, Jr.

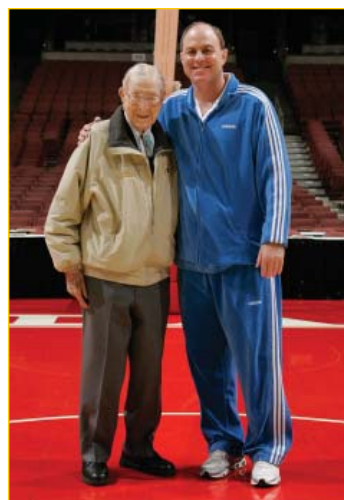
Mr. and Mrs. George C. Halversen
 Ms. Joanna E. Hammonds
 Mr. and Mrs. Robert T. Hanger
 Dr. and Mrs. Randy L. Hanson
 Ms. Carol A. Harman
 Ms. Claudia A. Hart
 Mr. Spencer C. Hawes
 Mr. and Mrs. Masato Hayashi
 Mrs. Judith D. Hayward
 Mr. Jeffrey M. Hecox
 Mr. Aaron James Heick
 Mr. and Mrs. Robert D. Held
 Dr. Edmond R. Hewlett & Ms. Mona Schlater-Hewlett
 Mr. and Mrs. Jerome P. Himmelberg, Jr.

The Honorable Ernest M. Hiroshige
 Mr. and Ms. James G. Hirsch
 Mr. Peter H. Hirsh
 Mr. Frank M. Hlavaty
 Mr. and Mrs. Bill Hodgson
 Mr. David Hoffman
 Dr. H. Mason Hohl
 Mr. Willmore F. Holbrow
 Mr. Patrick J. Holland
 Mr. and Mrs. Thomas G. Holland
 Mrs. Fantine E. Holley & Mr. H. Wallace Merryman
 Mr. and Mrs. Edwin L. Hollywood
 Miss Merritt S. Hooper
 Mr. and Mrs. Stephen C. Hopkins
 Mr. Kent Horiuchi
 Mr. and Mrs. Ronald G. Horspool



Blair Dunlap

Mr. and Mrs. Roger H. Howard
 Mr. and Mrs. Donald R. Howard
 Mr. and Mrs. Scott B. Howard
 Mr. and Mrs. Orrin J. Hubbell
 Mr. Bruce E. Hubert
 Mr. Bryan D. Hull
 Mr. and Mrs. Michael Hutson
 Mr. and Mrs. Richard A. Hutton
 Dr. David K. Imagawa
 Ms. Aiko A. Imagawa
 Mr. Gregg Mutsuo Imamoto
 Mr. Stanley M. Imanishi
 Mr. Arturo C. Inzaray
 Ms. Jill E. Ishida &
 Mr. G. Michael Tanaka
 Dr. and Mrs. Michael Israel



Coach John R. Wooden with Head Coach Ben Howland at Honda Center

Dr. and Mrs. Robert M. Itami
 Mr. and Mrs. Larry G. Ivarjack
 Mr. Javier F. Jimenez
 Mr. & Mrs. Scott T. Johnson, Jr.
 Mr. and Mrs. Bernard J. Johnson
 Mrs. Mildred R. Johnson
 Mr. and Mrs. Hollis Johnson
 Mr. and Mrs. Robert M. Johnston
 Mr. and Mrs. Raymond W. Jollymour, Jr.
 Mr. and Mrs. Sidney W. Jones
 Mrs. Carol A. Josephs-Cowan
 Mr. and Mrs. Terry Y. Jue
 Jules and Associates
 Mr. and Mrs. Eric G. Juline
 Mr. H. Russell Justice
 Dr. and Mrs. Takumi J. Kagawa
 Mr. Geoffrey C. Kahn
 Mr. and Mrs. James M. Kalmbach
 Dr. and Mrs. Glenn S. Kanamori
 Mr. Arthur Karma
 Mr. Michael D. Karz
 Mr. and Mrs. Gene B. Karzen
 Mr. George W. Kase
 Mr. and Mrs. Gilbert Katen
 Mr. Steven S. Kaufhold
 Ms. Christine L. Richardson
 Mr. Gadi Kaufmann & Mrs. Karen M. Kaufmann

Dr. and Mrs. Karl Kawakami
 Mr. and Mrs. Saul H. Kay
 Mr. and Mrs. F. Timothy Kelly, Jr.
 Mr. and Mrs. Orville Kelman
 Mr. Henry J. Kerner
 Mr. and Mrs. Randy E. Kessler
 Mr. and Mrs. Larry J. Kettell
 Ms. Joann Killeen
 Mr. and Mrs. Jung S. Kim
 Ms. June Y. Kim
 Mr. and Mrs. Jung S. Kim
 Mr. and Mrs. Eddy H. Kimura
 Mr. and Mrs. Michael P. King
 Ms. Nancy Kirkpatrick Reno
 Mr. and Mrs. David M. Kluth, Jr.
 Mr. Howard M. Knee
 Mrs. Carol Schneiderman-Knee
 Mrs. Melinda A. Kolani
 Mr. and Mrs. Ronald Kovach
 Mr. and Mrs. Eugene S. Koyamatsu

Mr. James D. Kozmor & Ms. Lisa A. Anderson
 Mr. and Mrs. Mark D. Kramer
 Mr. and Mrs. Ephraim P. Kranitz
 Dr. and Mrs. Philip I. Kress
 Mr. and Mrs. Fred Krimm
 Mr. and Mrs. Glenn R. Kriske
 Mr. and Mrs. Larry D. Kuhlman
 Mr. and Mrs. Laurence A. Kurtz
 Mrs. Evelyn S. Kurtzman
 Mr. and Mrs. Douglas M. Laidlaw
 Dr. and Mrs. Peter S. Lam
 Mr. Scott A. Lamont
 Mr. James William Lancaster, Jr.
 Mr. Robert C. Lashbrook & Mr. Pierre Monney
 Mr. and Mrs. Clark T. Lashmett
 Mr. and Mrs. Jeffrey D. Later
 Mr. and Mrs. James D. Lauter
 Mr. Frank X. Lauterbur
 Mr. and Mrs. Donald Lawrenz, Jr.
 Mr. Larry E. Lawson
 Mr. Larry Layne & Dr. Sheelagh Boyd
 Mr. and Mrs. Brian N. Lazarus
 Dr. and Mrs. Ronald B. Leaf
 Mr. and Mrs. Gary L. Leary
 Dr. and Mrs. Martin H. Lee
 Mr. Edward J. Lee
 Mrs. Nina M. Lee
 Mr. and Mrs. Ronald W. Lee
 Mr. and Mrs. Frank J. Lefkowitz
 Dr. Robert E. Lelevier
 Dr. Michael L. Lenke
 Dr. Eleanor A. Novick
 Dr. and Mrs. Ronald S. Lever
 Mr. and Mrs. Mark L. Levin
 Mr. and Mrs. Phillip C. Levin
 Mr. Aaron D. Levy
 Mr. and Mrs. Mark C. Levy
 Dr. and Mrs. Michael A. Lewinski
 Mr. and Mrs. Carl H. Libson
 Dr. and Mrs. Mark B. Lieberman
 Dr. Jay R. Lieberman
 Mr. and Mrs. Jeffrey L. Linden
 Dr. and Mrs. David M. Lipman
 Mr. and Mrs. David B. Lipsey
 Mr. David J. Liston
 Ms. Sarah N. Livingston
 Mr. and Mrs. Gary M. Loder
 Mr. and Mrs. Kevin G. Loftus



Football Coach Rick Neuheisel

Mr. Donald J. Long & Ms. Jo Ann Normanly-Long
 Mr. and Mrs. Jack Lopin
 Mr. and Mrs. John C. Lopuch
 Mr. and Mrs. Bruce M. Lorman
 Ms. Sondra M. Love
 Mr. David J. Lowenstein
 Dr. and Mrs. David R. Lowenthal
 Mr. Albert S. Lozano
 Dr. and Mrs. Jack D. Lubensky
 Mr. D.G. Spencer Ludgate
 Mr. Joseph P. Luftman & Mrs. Gailit Slonimsky Luftman
 Mr. and Mrs. Elwood G. Lui
 Mr. and Mrs. Harold Lurie
 Ms. Cheryl A. Lutz & Mr. Larry R. Pizarro



Gymnastics Coach Valorie Kondos Field (right) celebrates with Niki Tom

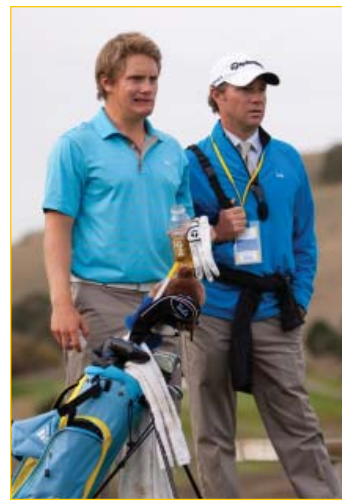
Mr. and Mrs. Jeff S. Lutzky
 Ms. Cheryl R. Maisel
 Kenneth and Sandra Malamed
 Mr. Derek C. Malmsten
 Maloney & Mullen
 Mr. Robert P. Mandler & Mrs. Nancy S. Sackett
 Mr. and Mrs. David I. Manheim
 Mr. William P. Marchbanks
 Mr. and Mrs. Stanley E. Maron
 Ms. Christina G. Martin
 Mr. and Mrs. Ajay K. Masih
 Dr. and Mrs. Gary A. Mayman
 Mr. Alan Mayo
 Mr. Eric Mayo
 Mr. George C. Mc Gill
 Mr. and Mrs. Stephen G. Mc Kee
 Ms. Nadine Davis McCowan
 Mr. and Mrs. Tom A. McFerson
 Mr. and Mrs. Michael S. McGreevey
 Mr. and Mrs. Robert C. McLaughlin
 Mr. and Mrs. Christopher McReynolds
 Mr. David E. Mead & Mrs. Lisa P. Mead
 Mr. and Mrs. Carey H. Melcher
 Mr. Sergio L. Melgar & Dr. Teresa C. Melgar-Larsen
 Mr. and Mrs. Martin R. Melone
 Mr. David Meltzer
 Dr. Fernando Mendoza & Dr. Hilda D. Mendoza
 Mr. Gregory A. Merchant

Mr. H. Wallace Merryman
 Mr. Andrew M. Meselson
 Mr. Kevin A. Meza
 Mr. and Mrs. John H. Michel
 Mr. and Mrs. Aaron E. Michiel
 Dr. Stewart A. Middledler
 Mr. and Mrs. Richard H. Millard
 Mr. Loren Miller, Jr.
 Ms. Kathy Mojibi
 Mr. and Mrs. Byron Z. Moldo
 Dr. Amy K. Monti & Dr. Ryan J. Monti
 Mr. Michael D. Montoya & Mrs. Jo Ann Montoya
 Mr. and Mrs. Carl R. Moore
 Mr. and Mrs. Corey S. Moore
 Mr. and Mrs. John L. Moore
 Mr. Robert A. Moore
 Mr. Dean F. Moren
 Mr. and Mrs. Jerome B. Morgan
 Mr. Norman R. Morgan
 Mr. and Mrs. Neal H. Moritz
 Ms. Stephanie Mork
 Mr. Lon Morse
 Ms. Linda I. Morton
 Mr. and Mrs. Arman L. Mouhibian
 Mr. Michael A. Mowry
 Mr. Ricardo Munoz-Flores
 Mr. and Mrs. Charles E. Murphy
 Mr. and Mrs. Elwyn A. Murray
 Mr. and Mrs. Brian Nathan Nairin
 Mr. and Mrs. Stephen K. Nakata
 Mr. and Mrs. Mark Nanamura
 Mr. and Mrs. Max F. Nardoni



Men's Soccer Coach Jorge Salcedo

Mr. A.J. Narver
 Mr. Scott Narver
 Dr. Philip D. Nathanson
 Mr. David B. Navarro
 Dr. William E. Naylor & Ms. Jane E. Terjung
 Mr. and Mrs. R. Jeffrey Neer
 Dr. and Mrs. Richard Gerald Ness
 Mr. and Mrs. Harry Nieves
 Mr. Alexandre C. Nisenbaum
 Mr. Walter W. Noce, Jr.
 Mr. and Mrs. Michael E. Novak
 Mr. David P. Noyes
 Mr. and Mrs. Robert R. Nunn
 Dr. and Mrs. John K. Nylund
 Mr. Ron Ockander



Men's Golf Coach Derek Freeman (right) with Pontus Widegren

Mr. and Mrs. Kay S. Oda
 Mr. Eddie M. Oddo
 Mr. Claude Ognibene
 Dr. and Mrs. Gregg T. Okada
 Mr. and Mrs. Lloyd M. Oki
 Mr. and Mrs. Robert H. Olander II
 Mr. Felipe Olivar
 Mr. Marc A. Olson
 Mr. J. O. Oltmans II
 Mr. and Mrs. Gary H. Oseransky
 Dr. and Mrs. Eugene M. Osher
 Dr. and Mrs. William G. Ouchi
 Dr. Elizabeth Y. Pak & Dr. Eric J. Wong
 Mr. and Mrs. Herman S. Palarz
 Dr. and Mrs. Nicholas M. Panagiotis
 Dr. and Mrs. Joel F. Panish
 Mr. and Mrs. John E. Papadakis
 Mr. and Mrs. Steve S. Park
 Mr. Thomas Y. Park
 Mr. and Mrs. Aric Partovich
 Pasadena Center Operating Company
 Mr. and Mrs. David J. Pasternak
 Mr. John Pate
 Mr. Varun V. Pathria & Ms. Maria T. Manotok Pathria
 Mr. and Mrs. William S. Patrick
 Mr. Jerrald F. Pedrotti & Ms. Carol Ng
 Mr. and Mrs. Paul A. Pellizzon
 Mr. and Mrs. David R. Penniall
 Mr. and Mrs. Albert Perez, Jr.
 Mr. and Mrs. Javier Perez
 Mr. Jonathan L. Pettit
 Mr. Paul G. Pickert & Ms. Marian B. Price
 Mr. David C. Pierce
 Mr. and Mrs. Thomas G. Polenzani
 Mr. and Mrs. Arnold Porath
 Mr. Patrick A. Poulatian
 Mr. and Mrs. Jonathan W. Povill
 Mr. & Mrs. William F. Powers, Jr.
 Mr. and Mrs. Sheldon W. Presser
 Ms. Marian B. Price
 Mr. Paul G. Pickert
 Mr. and Mrs. David M. Primes
 Mr. and Mrs. William Guan
 Mr. and Mrs. Lance M. Ralls
 Mr. John R. Ramirez
 Mr. John B. Ramljak
 Dr. Nancy L. Ramsey

Mr. and Mrs. Andrew Rappaport
 Mr. and Mrs. Wayne Ratkovich
 Dr. and Mrs. Fernando A. Ravessoud
 Mr. Brett L. Reed & Ms. Danielle E. Caluwaerts
 Mr. and Mrs. James S. Reid
 Mr. and Mrs. Jeff B. Remer
 Judge and Mrs. Samuel D. Reyes
 Mr. and Mrs. David Reynolds
 Mr. and Mrs. Terry Reynolds
 Mr. and Mrs. Michael P. Reznick
 Mr. and Mrs. Donald R. Rhodes
 Ms. Jillian M. Rice
 Dr. and Mrs. J. Ronald Rich
 Ms. Melissa E. Richards
 Mr. and Mrs. Kevin D. Rising
 Mr. Craig R. Roach
 Dr. and Mrs. Larry A. Roberson
 Mr. Greg Roberts
 Mr. Michael C. Robinson
 Mr. Stephen P. Robinson
 Mr. and Mrs. William C. Roen
 Dr. and Mrs. Arthur L. Rolston
 Mr. and Mrs. Fredrick L. Rose
 Mr. and Mrs. Edwin M. Rosenberg
 Mr. and Mrs. Bradford G. Rosenberger
 Mr. and Mrs. Paul D. Rosenberger
 Mr. and Mrs. Lee Rosenblatt
 Mr. Gary V. Rosenfield
 Mr. Michael K. Rosenthal
 Mr. and Mrs. Richard M. Rosenthal
 Dr. and Mrs. Bennett E. Roth
 Mr. Richard M. Roth
 Mr. and Mrs. Myron B. Rothberg
 Ms. Stephanie J. Rothman
 Mr. and Mrs. David Rothstein
 Mr. and Mrs. Michael D. Rouse
 Mr. and Mrs. David P. Rousso
 Mr. and Mrs. Donald E. Rowson
 Mr. and Mrs. Stephen D. Royer
 Mr. and Mrs. Kacy Rozelle
 The Honorable Laurence D. Rubin
 Mr. Alec Rubinstein
 Mr. Hubbard S. Russell, Jr.
 Mrs. Elizabeth Russell
 Dr. and Mrs. Peter A. Russo
 Dr. and Mrs. Wayne B. Sager, Jr.
 Mr. and Mrs. Jeffrey K. Sakihara
 Mr. and Mrs. Daniel E. Saks
 Mr. and Mrs. Anthony P. Salerno



Garrett Muagututia

Mr. and Mrs. Laurence Salgarolo
 Dr. & Mrs. Ronald G. Salzetti, Jr.
 Mr. Tim R. Samarin
 Ms. Estelle Samson
 Mr. Vicente D. Sanchez
 Dr. Don P. Sanders
 Mrs. Rose E. Sanders
 Mrs. Vicki J. Sanderson-Cutler & Mr.
 Leonard W. Cutler, Jr.
 Mr. Fred Sapp
 Mr. and Mrs. William E. Sawrey
 Mrs. Bonnie B. Sawyer
 Scandrew Enterprises
 Mr. and Mrs. Jeremy T. Scarlett
 Dr. and Mrs. Melvin Schapiro
 Mrs. Myrna M. Schiffman



Softball Coach Kelly Inouye-Perez has won a national title as a player and a coach

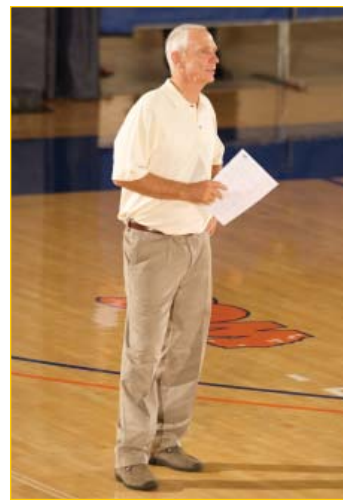
Mr. and Mrs. James H. Schladen
 Mr. and Mrs. Jeffrey Schlichter
 Dr. and Mrs. Abraham J. Schlossberg
 Mr. and Mrs. Stanley B. Schneider
 Mr. and Mrs. Brent S. Schoenbaum
 Mr. and Mrs. Maurice Schoenholz
 Mr. Daniel Schrier
 Ms. Diane Schroder
 Mr. and Mrs. Donald Jeffrey Schuster
 Dr. and Mrs. Jack G. Schutte
 Mr. and Mrs. Peter E. Schwab
 Dr. and Mrs. Herbert A. Scott
 Mr. and Mrs. Jon J. Sedillos
 Dr. J. Sanders Sevall
 Mr. Douglas D. Shaffer & Dr. Leslie Z.
 Shaffer
 Mr. David B. Shaffer
 Mr. Eddie Sheldrake
 Mr. and Mrs. Steven Sheller
 Mrs. Michiko Shepherd
 Dr. and Mrs. John L. Sherman
 Mr. Ephram M. Sherrin
 Dr. and Mrs. Ronald Shigematsu
 Mr. and Mrs. Irwin Shpiro
 Arlene and Jonathan Shutt
 Mr. and Mrs. Arthur Silver
 Mr. and Mrs. David D. Silverstein
 Mr. Reed A. Simon
 Mr. Justin S. Simons
 Mr. and Mrs. Emile F. Skaff, Sr.
 Mr. and Mrs. Herman J. Sluga
 Mr. and Mrs. Marc J. Smernoff

Mr. and Mrs. Bruce M. Smiley
 Mr. Donald T. Smith, Jr.
 Ms. Sandra Smith Thayer
 Mr. Edson Smith & Mrs. Heather M.
 Hart-Smith
 Mr. and Mrs. Mark J. Sneed
 Dr. Marguerite A. Snow
 Mr. Richard A. Honn
 Ms. Christine K. Snowberger
 Mr. and Mrs. Douglas P. Snyder
 Mr. and Mrs. Steven R. Snyder
 Mr. and Mrs. Peter T. So
 Mrs. Nancy K. Sogg
 Mr. Steven L. Solis
 Mrs. Marcelline M. Soper
 Mr. and Mrs. David A. Spiegel
 Mr. and Mrs. Herbert A. Spivak
 Mr. and Mrs. Jason K. Spivak
 Mr. and Mrs. Scott Spiwak
 Mr. and Mrs. Roger L. Stanton
 Mr. David Stassel & Ms. Donna C.
 Siegel
 Ms. Sylbeth D. Stearns
 Mr. and Mrs. Eric S. Steinberg
 Mr. and Mrs. Warren Steinhauser
 Mr. Gary W. Stephens
 Ms. Monica L. Stergion
 Mr. and Mrs. Jerome R. Stern
 Mr. and Mrs. Eric A. Sternbach
 Mr. William R. Stevenson
 Mr. and Mrs. Dan Stillwell
 Mr. and Mrs. Tim L. Strader, Jr.
 Mr. and Mrs. Geoffrey S. Strand
 Mr. Shawn P. Stuart



Women's Golf Coach Carrie Forsyth (right) with Glory Yang

Mr. and Mrs. Mark J. Stull
 Stutman, Treister & Glatt Professional
 Corporation
 Mr. and Mrs. Ray S. Sugiura
 Mr. Brian M. Suh
 Mr. and Mrs. Paul C. Sung
 Mr. and Mrs. Ira T. Swartz
 Mr. Christopher S. Takahashi
 Mr. and Mrs. Ronald N. Takasugi
 Mr. Craig H. Tanimoto
 Dr. and Mrs. Robert J. Taub
 Mr. Peter J. Taylor & Ms. Coralyn
 Andres Taylor
 Mr. and Mrs. Stanton J. Taylor



Women's Volleyball Coach Andy Banachowski retired after the 2009 season (43 seasons)

Mr. Philip A. Teeter
 Mr. and Mrs. Steven J. Teller
 Mr. and Mrs. Paul A. Tenette
 Mr. & Mrs. Michael Teobaldi, Jr.
 Mr. and Mrs. Kenneth J. Terpening
 The Hon. Christian F. Thierbach
 Mr. Robert E. Thoe
 Mr. Clifton E. Thomas
 Mr. and Mrs. J. Nicholson Thomas
 Mr. and Mrs. Mark E. Thomas
 Mr. Sean T. Thompson
 The Honorable and Mrs. Thomas N.
 Thrasher
 Dr. Sanford A. Tisherman
 Dr. Flora J. Tisherman
 Mr. and Mrs. John T. Toner, Jr.
 Mr. and Mrs. Thomas W. Tong
 Mr. Damian M. Toohey
 Mr. and Mrs. Sean A. Topp
 Dr. and Mrs. John M. Tsao, Sr.
 Mr. and Mrs. Richard Tuch
 Mr. Norman S. Tucker
 Mr. Terry Tumey & Ms. Candace L.
 Gonzales
 Mr. Gregory G. Turk
 Mr. Ronald S. Turner
 Mr. and Mrs. Michael Udovic
 Mr. Warren D. Umali
 Dr. Edward W. Ung
 Mr. and Mrs. Peter R. Ursano
 Mr. Robert C. Utley
 Dr. and Mrs. Richard W. Vanis
 Mr. and Mrs. Gregory F. Vena
 Mr. and Mrs. Ned J. Vento
 Mr. Terry M. Wachsner
 Ms. Leslie A. Walden
 Mr. Kenneth A. Shelton
 Mrs. Bridget A. Waldron
 Mr. and Mrs. Paul J. Wallin
 Mr. and Mrs. Steve Walters
 Mr. and Mrs. Robert S. Walther
 Mr. and Mrs. Rick A. Wandrocke
 Mr. and Mrs. Ben Wang
 Mr. Ricky D. Wannomae & Dr. Patrice
 M. Yasuda
 Mr. O'Dell Warren
 Mr. and Mrs. Ernest E. Warsaw
 Mr. Steven G. Wasserman

Mr. Christopher D. Wasson & Ms.
 Sharon H. Barkins-Wasson
 Mr. and Mrs. Andrew J. Waxler
 Mr. and Mrs. Eric S. Waxman
 Mr. and Mrs. Neal P. Weichel
 Mr. William A. Weingartner
 Mr. and Mrs. Daniel J. Weintraub
 Mr. and Mrs. Glenn C. Weirick
 Mr. and Mrs. Herbert H. Weisberg
 Mr. Michael Ralph Weiss
 Mr. and Mrs. Carl I. Weissburg
 Mr. and Mrs. Robert A. Weissman
 Mr. and Mrs. James Wenger
 Mr. and Mrs. Christopher M. Westhoff
 Mr. and Mrs. Douglas J. Westhoff
 Mr. Dale W. Wheatley & Ms. Lori S.
 Okimoto-Wheatley
 Mrs. Rosemary J. White & Mr. A.
 Dean Hindson
 Mr. Sidney Wicks
 Mr. John Wigle
 Dr. Bryan V. Wiley
 Ms. Nicole Wilkin
 Mr. Andrew S. Williams
 Mr. and Mrs. Ron Williamson
 Mr. and Mrs. Bruce G. Willison
 Dr. Christine M. Winkler
 Mr. and Mrs. Richard M. Winsberg
 Mr. and Mrs. John R. Wise
 Mr. and Mrs. Edward E. Wiseman
 Dr. and Mrs. Jeffrey L. Wissot
 Mr. and Mrs. Keenan L. Wolens
 Judge and Mrs. Leonard S. Wolf
 Mr. and Mrs. Stephen M. Wolf
 Mr. Harlan G. Wong
 Mr. Ken S. Wong
 Mr. Mitch L. Woods
 Mr. and Mrs. Tom T. Yamamoto
 Ms. Grace A. Yamamura & Dr.
 Michael W. Clark
 Mr. Peter Yang
 Mr. and Mrs. Marc A. Yassinger
 Mr. and Mrs. Ronnie Yee
 Mr. and Mrs. Christopher Yelich
 Dr. and Mrs. Albert Zager
 Ms. Wendy Wu Zaino
 Mr. and Mrs. Alex Zepeda
 Mr. Todd A. Zgorzelski
 Mrs. Ruth Harvey Zommick



Women's Tennis Coach Stella Sampras Webster

CALLING ALL UCLA LETTERWINNERS AND FORMER STUDENT-ATHLETES!



As a UCLA former student-athlete you are exceptional. As a UCLA varsity letterwinner you are unique. Because of your participation and achievements as a UCLA varsity athlete, you will forever be a part of the greatest collegiate sports program in the country. The goal of the Bruin Varsity Club is to

recognize and honor all former UCLA varsity student-athletes for their dedication, excellence and for their contributions made to the success of UCLA athletics.

The Bruin Varsity Club is a prestigious group of former student-athletes, sharing and reliving experiences, networking, participating in social activities, promoting and nurturing the Bruin tradition of both athletic and academic excellence.

As a member of the Bruin Varsity Club you will share a camaraderie among a diverse group of remarkable people. Whether your collegiate athletic career ended last season or 60 years ago, whether you live in California or on the other side of the country, you are forever connected to the champions that are UCLA. With membership comes benefits and opportunities. Join your fellow UCLA former student-athletes in sustaining, encouraging and supporting the growth and success of UCLA athletics.

BRUIN VARSITY CLUB MEMBER QUALIFICATIONS:

Bruin Varsity Club membership consists of UCLA athletes who have participated and received at least one varsity letter in an intercollegiate varsity sport from UCLA.

BRUIN VARSITY CLUB LEVELS & BENEFITS:

Premier Membership: (\$75.00 Annual Dues)

Active Membership: (Free)

BENEFITS:

All Premier and Active Bruin Varsity Club members are eligible to receive one complimentary admission to all regularly scheduled UCLA home intercollegiate sporting events (this does not include, Men's Basketball games, NCAA Championships or special events). Free admission to all home UCLA sporting events will be awarded on a space available basis. Your Bruin Varsity Club card cannot be honored if tickets and/or seats are no longer available. In addition, your card must be presented at time of admittance and is non-transferable.





The Athletic Department's 10-year association with adidas highlights the essential relationships we have with our corporate sponsors. Providing approximately 9% of our income, we thank the following companies and corporations for their invaluable support:

AAA of Southern California
 Adidas
 Anheuser-Busch
 AT&T Yellow Pages
 Bank of the West
 Bar One Catering
 BJ's Restaurant & Brewhouse
 Blue Media
 Bristol Farms
 Carl's Jr.
 Coca-Cola
 Custom Comfort Mattress
 Delta Airlines
 Domino's Pizza
 Dreyer's Grand Ice Cream, Inc.
 Farmers Insurance
 Fox Sports Net
 Gatorade
 Hotel Angeleno
 IBEW Local 11

iFLY
 In the Paint
 Just Born, Inc.
 Kragen O'Reilly Auto Parts
 Living Spaces Furniture
 Louise's Trattoria
 Mattel Children's Hospital
 UCLA
 Mercedes Benz of Beverly Hills
 Muscle Milk
 Newport Rib Company
 The Parking Spot
 Power Balance
 Rebecca's Mom Leotards
 Red Bull
 RSC Equipment Rental
 Sarah Leonard Fine Jewelers
 SEIA
 Shallots Restaurant Group
 Sirius XM Radio, Inc.

Socko's Subs
 Souplantation and Sweet Tomatoes
 South Bay Brokers, Inc.
 Sport Chalet
 State Farm
 Subway
 The Lakes at El Segundo
 Ticketmaster
 Time Warner Cable
 Northridge Toyota & Scion
 UCLA Health System
 UCLA Rewards Card from Bank of America
 UCLA Store
 UCLA University Communications
 Westcoast Tire & Service
 Ziering Medical



UCLA's corporate sponsorships are administered by IMG College, which merged with previous multi-media rights-holder ISP Sports in the fall of 2010. IMG College manages multi-media rights for more than 80 of the leading universities,

athletic conferences, and bowl games across the country. Parent company IMG Worldwide divisions also include CLC, which serves as the exclusive licensing agency for UCLA and more than 200 other collegiate properties.

Since partnering with UCLA in 2004-05, ISP/IMG has tripled the amount of corporate support for the program. The IMG College team helps

provide greater opportunities for UCLA student-athletes by generating vital revenue to help fund the department's overall program.

With the additional resources of IMG Worldwide and a management team that remains virtually intact, the recent merger between IMG College and ISP promises to provide even more opportunity for growth for UCLA.

**TO BECOME
 A UCLA
 CORPORATE
 SPONSOR CALL**

**IMG COLLEGE
 AT:**

310-825-0328



UCLA Band and Spirit Squads