

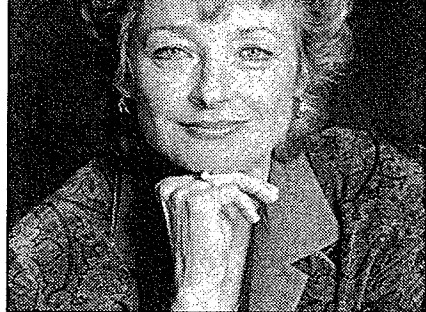
held that spot this season. And CBS' *Major Dad* had its highest ranking ever, No. 4, boosted by the appearance of Jameson Parker, who co-starred with *Major's* Gerald McRaney on *Simon & Simon*.

But CBS' NCAA basketball coverage may have slam-dunked the network's chance at second place for the season. Prime-time games Thursday, Friday and Saturday failed to break No. 58 in the rankings, and CBS landed in third for the week, behind ABC.

Meanwhile, NBC maintains a solid lock on first place. Last week, it won the week with five top-10 shows. L.A.

to her death. The show ranked No. 3, its best showing since March 22, 1990. NBC's *Quantum Leap* had a 14.1 rating/26 share, its highest numbers ever. Two classics topped the week's lineup of movies. Tuesday, CBS' *The Wizard of Oz* ranked a strong No. 23. ABC's Easter-time stalwart *The Ten Commandments*, at No. 26, beat the Sunday night competition, CBS' *The Untouchables* (No. 31) and NBC's *Shoot First* (No. 38).

ABC News remains first in the news race. NBC was second, beating CBS, which was at times pre-empted or re-scheduled because of basketball.



Outlook 90
OUT WITH A BANG: Diana Muldaur's last show boosted 'L.A. Law' ratings.

Using this chart

- ▶ Ratings information comes from the A.C. Nielsen Co.
- ▶ A ratings point represents 931,000 TV households; shares are the percentage of sets in use; number of viewers is in millions.
- ▶ (*) indicates a Nielsen ratings tie.
- ▶ (r) indicates a repeat episode.
- ▶ (s) indicates a special broadcast.

Monday, March 18, 1991

	Viewers	Rating	Share	Rank
8:00 Evening Shade (CBS)	20.5	14.2	22	27
Fresh Prince of Bel-Air (NBC) (r)	20.3	13.1	21	35
MacGyver (ABC) (r)	19.3	12.3	19	*40
Princess Bride (Fox) (r)	8.1	5.2	8	78
8:30 Major Dad (CBS)	24.7	17.4	26	*4
Return of the Jedi (NBC) (r)	18.8	12.3	20	*40
9:00 Murphy Brown (CBS)	24.1	17.2	26	*7
Home Videos (ABC) (r)	20.3	13.4	20	*33
9:30 Designing Women (CBS)	22.6	16.5	25	*13
10:00 Good Sports (CBS)	15.3	11.5	19	45
Tube Test II (ABC)	16.2	11.3	20	*47
10:30 Murphy Brown (CBS) (r)	13.3	10.4	19	*53

Tuesday, March 19, 1991

8:00 Matlock (NBC) (r)	23.4	16.4	26	15
The Wizard of Oz (CBS) (r)	26.2	14.8	23	23
Who's the Boss? (ABC) (r)	20.1	13.4	21	*33
8:30 Davis Rules (ABC)	20.1	12.7	20	37
9:00 In the Heat of the Night (NBC)	25.1	17.2	26	*7
Roseanne (ABC) (r)	22.0	14.6	22	*24
9:30 Coach (ABC) (r)	18.8	12.8	20	36
10:00 Law & Order (NBC)	19.3	14.1	25	*28
Eddie Dodd (ABC)	9.2	7.0	13	71
10:07 Rescue 911 (CBS)	22.1	13.5	25	*31

Wednesday, March 20, 1991

8:00 Unsolved Mysteries (NBC)	24.9	16.5	27	*13
The Wonder Years (ABC)	23.2	15.0	25	*21
48 Hours (CBS)	11.9	8.6	14	*60
8:30 Growing Pains (ABC) (r)	22.9	14.6	24	*24
9:00 Doogie Howser, M.D. (ABC)	23.2	15.0	24	*21
Jake and the Fatman (CBS)	19.7	14.0	23	30
Night Court (NBC)	18.7	12.6	20	*38
9:30 Anything but Love (ABC)	17.9	12.1	20	43
Dear John (NBC)	16.6	11.3	19	*47
10:00 Quantum Leap (NBC)	20.7	14.1	26	*28
Equal Justice (ABC)	11.8	9.1	17	59
WIOU (CBS)	10.4	7.7	14	*68

Thursday, March 21, 1991

8:00 The Cosby Show (NBC)	25.4	16.9	28	10
The Simpsons (Fox) (r)	21.0	12.3	20	*40
Columbo (ABC) (r)	16.3	11.4	18	46
NCAA Basketball (CBS) (s)	12.1	8.5	15	*62
8:30 A Different World (NBC)	27.0	17.2	28	*7
Babes (Fox) (r)	12.2	7.5	12	70
9:00 Cheers (NBC)	28.8	19.1	30	2
Beverly Hills, 90210 (Fox) (r)	10.6	6.9	11	72
9:30 Wings (NBC)	23.1	16.1	26	17
10:00 L.A. Law (NBC)	26.2	18.6	32	3
PrimeTime Live (ABC)	15.6	11.3	20	*47

Top 10

- 1 60 Minutes (CBS)
- 2 Cheers (NBC)
- 3 L.A. Law (NBC)
- 4 Family Matters (ABC)
- * Major Dad (CBS)
- 6 20/20 (ABC)
- 7 A Different World (NBC)
- * Murphy Brown (CBS)
- * In the Heat of the Night (NBC)
- 10 The Cosby Show (NBC)

Network ratings

- For the week:
- NBC: 13.0
 - ABC: 12.4
 - CBS: 11.6
 - Fox: 6.5
- Season to date:
- NBC: 12.8
 - ABC: 12.5
 - CBS: 12.4
 - Fox: 6.4

Evening news

- For the week:
- ABC: 11.4
 - NBC: 9.7
 - CBS: 9.2
- Last week:
- ABC: 11.8
 - NBC: 10.2
 - CBS: 9.5

Bottom 5

- 79 True Colors (Fox)
- 80 Cops (Fox)
- 81 Totally Hidden Video (Fox)
- 82 Yearbook (Fox)
- 83 Against the Law (Fox)

Friday, March 22, 1991

	Viewers	Rating	Share	Rank
8:00 Full House (ABC)	26.5	16.3	29	16
Hunter (NBC) (r)	13.8	9.5	17	57
NCAA Basketball (CBS) (s)	11.0	7.7	14	*68
America's Most Wanted (Fox)	10.0	6.8	12	73
8:30 Family Matters (ABC)	28.8	17.4	30	*4
9:00 Perfect Strangers (ABC)	25.3	15.2	26	20
Against the Law (Fox)	4.4	3.1	5	83
9:30 Baby Talk (ABC)	25.0	15.3	27	19
10:00 20/20 (ABC)	24.6	17.3	32	6
Dark Shadows (NBC)	13.2	8.4	15	*64

Saturday, March 23, 1991

6:58 NCAA Basketball (CBS) (s)	13.1	9.3	18	58
8:00 Amen (NBC)	15.5	10.5	19	*50
Young Riders (ABC)	12.2	8.2	15	66
Totally Hidden Video (Fox)	8.1	4.9	9	81
8:30 Down Home (NBC)	15.3	10.5	19	*50
Yearbook (Fox)	5.5	3.6	7	82
9:00 The Golden Girls (NBC)	24.6	16.8	30	11
Lady Mobster (ABC)	12.0	8.6	16	*60
Where the Hell's that Gold? (CBS) (r)	11.5	7.8	14	67
Cops (Fox)	7.8	5.0	9	80
9:30 Empty Nest (NBC)	24.3	16.6	29	12
Cops (Fox) (r)	9.1	5.7	10	*75
10:00 Shannon's Deal (NBC)	14.3	10.2	20	55

Sunday, March 24, 1991

7:00 60 Minutes (CBS)	28.7	19.7	34	1
The Ten Commandments (ABC) (r)	23.7	14.3	24	26
Super Bloopers & Jokes (NBC)	9.8	6.5	11	74
True Colors (Fox)	8.3	5.1	9	79
7:30 Parker Lewis (Fox)	9.0	5.7	10	*75
8:00 Evening Shade (CBS)	23.2	15.4	24	18
In Living Color (Fox) (r)	16.6	10.1	16	56
Expose (NBC)	12.8	8.4	13	*61
8:30 The Untouchables (CBS) (r)	20.3	13.5	22	*34
Real Life/Jane Pauley (NBC)	15.6	10.5	16	*50
Get a Life (Fox)	13.6	8.5	13	*62
9:00 Shoot First (NBC)	19.1	12.6	20	*38
Married ... With Children (Fox)	18.7	11.9	18	44
9:30 Married ... Children (Fox) (r)	16.3	10.4	16	*53
10:00 Comic Strip Live (Fox)	7.3	5.3	9	77