

# so whatcha wanna do . . .

## State Game Lands

Northeastern Pennsylvania is a land of great contrasts. It consists of big woods, endless mountains, meadows, swamps, reclaimed strip mines and farms planted in corn and wheat. This diversified habitat produces an abundance and variety of wildlife, and offers sportsmen some excellent hunting opportunities for big and small game and trapping for furbearers. The Northeast is home to bears, deer, turkeys, and snowshoe hares. It has cottontails, grouse, woodcock, squirrels, waterfowl and stocked pheasants.

State Game Lands in Columbia and Montour Counties include:

- SGL #13 – Sonestown – 49,529 acres
- SGL #55 – Jonestown – 2,474 acres
- SGL #58 – Mainville – 12,646 acres
- SGL #115 – Danville – 1,243 acres
- SGL #226 – Millville – 4,335 acres
- SGL #329 – Aristes – 1,146 acres

The maps on the following pages are provided as a resource. Printable high-resolution maps are available on the Pennsylvania Game Commissions website ([www.pgc.state.pa.us](http://www.pgc.state.pa.us)).

# State Game Lands #13



|                 |   |
|-----------------|---|
| Location:       | Sonestown, PA<br>Columbia and Sullivan Counties         |
| Acres:          | 49,529  |
| Terrain:        | Forested with several impoundments scattered throughout |
| Prevalent Game: | Deer, Bear, Turkey, Grouse and Waterfowl                |
| Hiking Trails:  | 31.3 miles of hiking trails exist                       |

## Directions to State Game Lands #13

Numerous access points for the state game lands are available. For the closest parking area from the Bloomsburg Visitors Center, follow Route 487 North approximately 16 miles and turn left on PA 239. In approximately 2 miles, bare right onto Klinger Hill Road/ Logging Road. Follow for about 2.5 miles, and bare left onto Camp Lavigne Road, and then right onto School House Road. Follow for 1 mile, then turn right onto Central Road/Elk Grove Road/Mountain Road. Parking will be on the left in about 5 miles.

For more information on all of the outdoor recreation amenities in Columbia and Montour Counties, please stop by the  
Columbia-Montour  
Visitors Bureau

121 Papermill Road  
Bloomsburg, PA 17815

or

316 Mill Street  
Danville, PA 17821

1.800.847.4810  
iTourColumbiaMontour.com



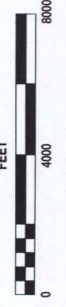
PENNSYLVANIA GAME COMMISSION

# STATE GAME LANDS

## 13

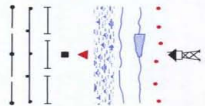
### COLUMBIA & SULLIVAN COUNTIES

REVISÉ FEBRUARY 1999  
 MAP 1 OF 4  
 CONTOUR INTERVAL 100 FEET



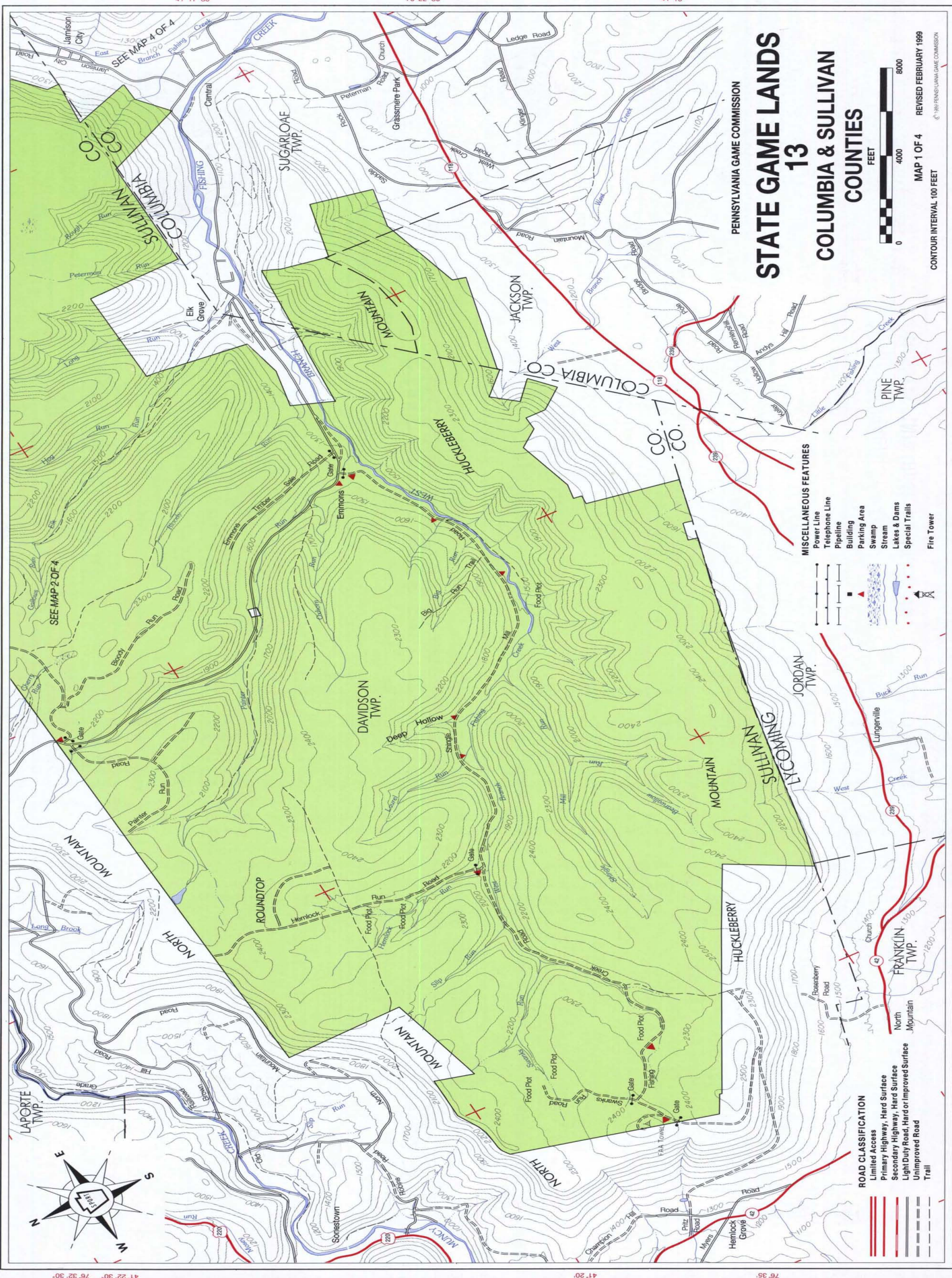
MISCELLANEOUS FEATURES

- Power Line
- Telephone Line
- Pipeline
- Building
- Parking Area
- Swamp
- Stream
- Lakes & Dams
- Special Trails
- Fire Tower



ROAD CLASSIFICATION

- Limited Access
- Primary Highway, Hard Surface
- Secondary Highway, Hard Surface
- Light Duty Road, Hard or Improved Surface
- Unimproved Road
- Trail



# State Game Lands #55



|                 |                                   |
|-----------------|-----------------------------------|
| Location:       | Jonestown, PA<br>Columbia County  |
| Acres:          | 2,474                             |
| Terrain:        | Mountainous                       |
| Prevalent Game: | Deer, Turkey, Grouse and Squirrel |
|                 |                                   |

## Directions to State Game Lands #55

Numerous access points for the state game lands are available. For the closest parking area from the Bloomsburg Visitors Center, follow Route 487 North to Interstate 80 East. Take exit 241B (approx. 5 miles) to merge onto Columbia Blvd/US-11 toward Berwick. Follow US-11 approximately 3 miles and turn left on Park Road/Freas Avenue. In 1 miles, turn left onto Cemetary Road. Go another miles and turn right onto Martzville Road. Turn left onto Kachinka Hollow Road. In approximately 2.5 miles, turn left onto Summerhill Road, which becomes Ridge Road. Parking will be on the right in less then 1 mile.

For more information on all of the outdoor recreation amenities in Columbia and Montour Counties, please stop by the  
Columbia-Montour  
Visitors Bureau

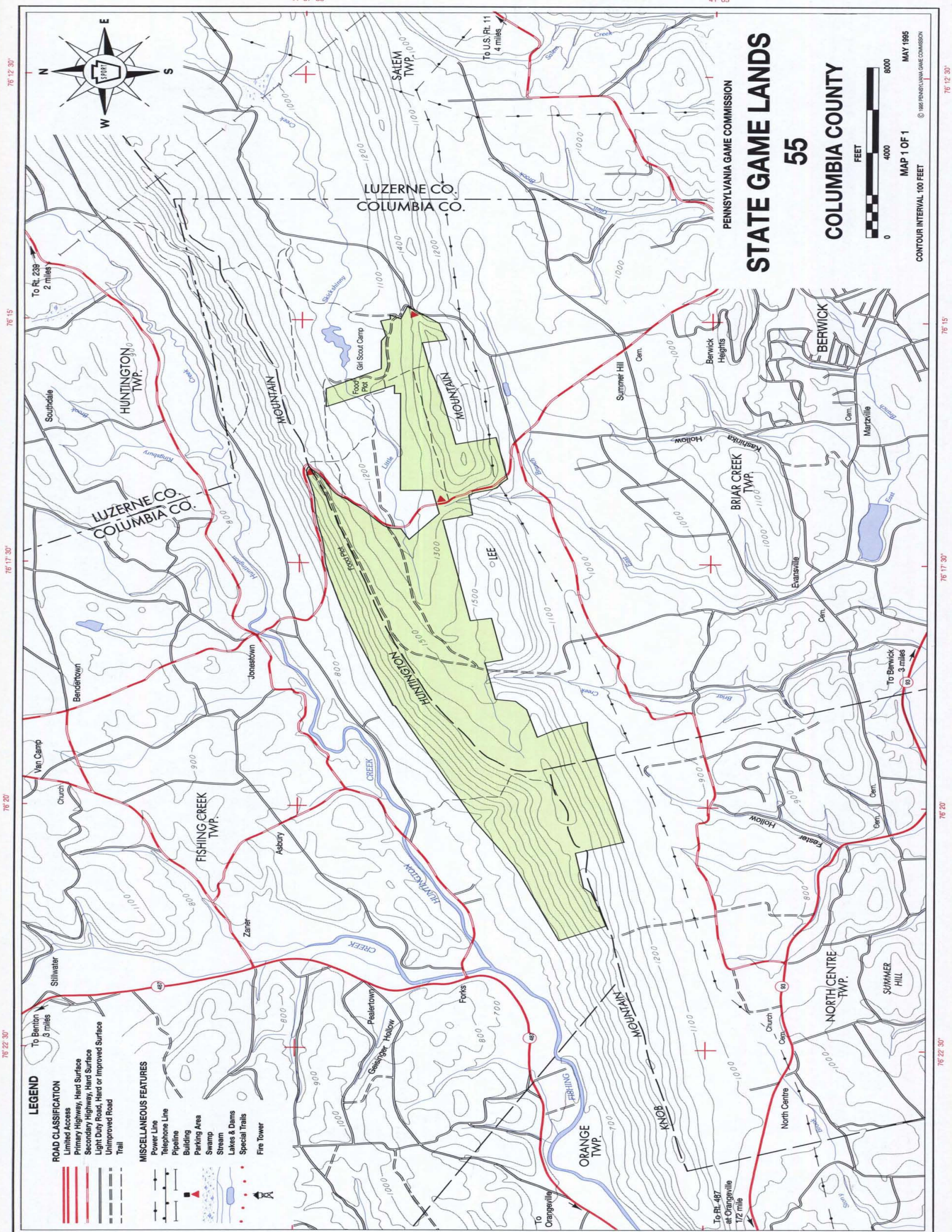
121 Papermill Road  
Bloomsburg, PA 17815

or

316 Mill Street  
Danville, PA 17821

1.800.847.4810  
iTourColumbiaMontour.com





**STATE GAME LANDS**  
**55**  
**COLUMBIA COUNTY**

PENNSYLVANIA GAME COMMISSION



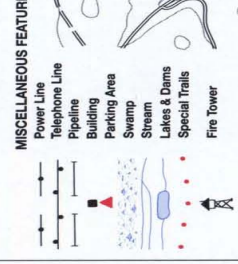
MAP 1 OF 1

CONTOUR INTERVAL 100 FEET

MAY 1985

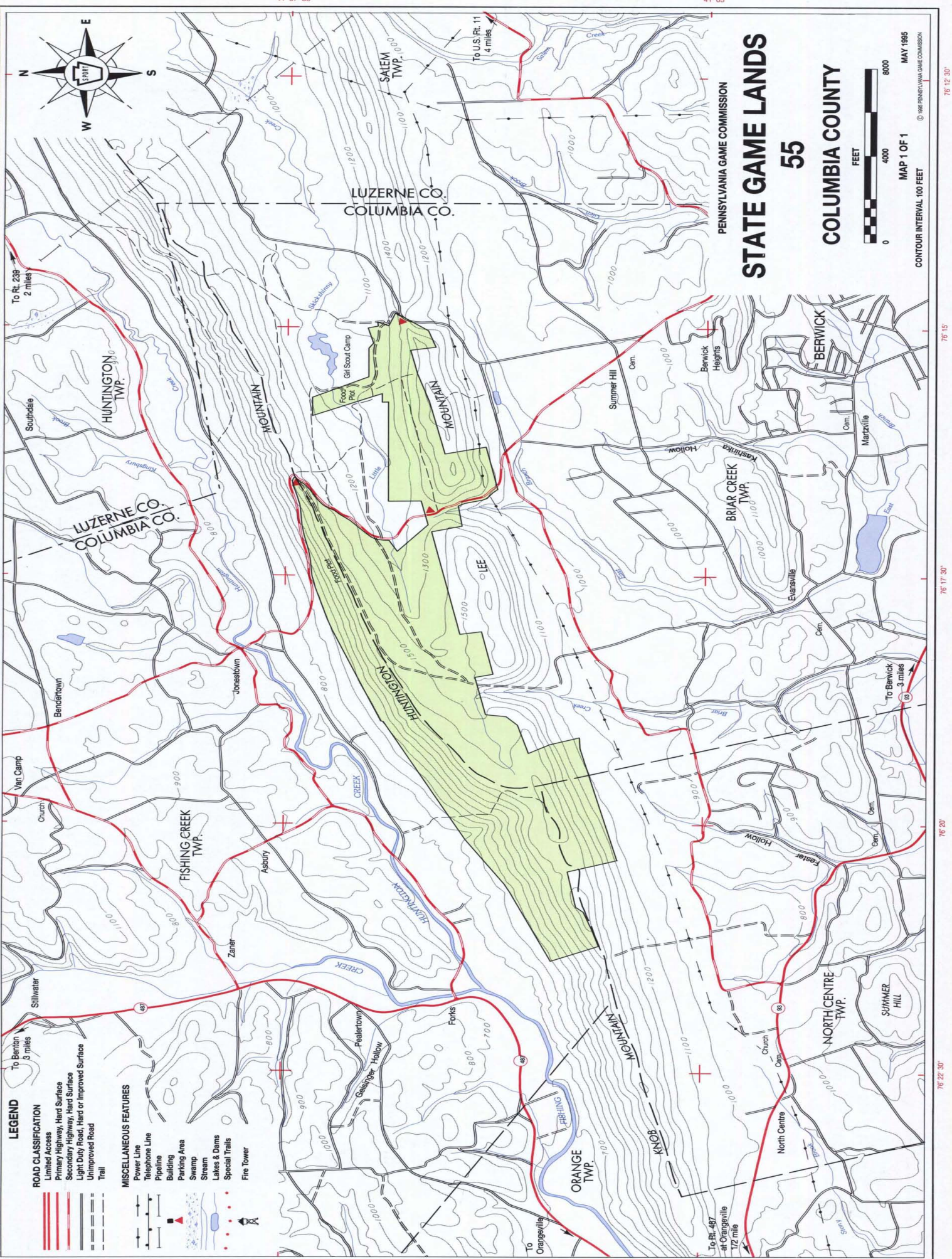
© 1985 PENNSYLVANIA GAME COMMISSION

- LEGEND**
- ROAD CLASSIFICATION**
- Primary Highway, Hard Surface
  - Secondary Highway, Hard Surface
  - Light Duty Road, Hard or Improved Surface
  - Unimproved Road
  - Trail
- MISCELLANEOUS FEATURES**
- Power Line
  - Telephone Line
  - Pipeline
  - Building
  - Parking Area
  - Swamp
  - Stream
  - Lakes & Dams
  - Special Trails
  - Fire Tower



**ROAD CLASSIFICATION**

- Primary Highway, Hard Surface
- Secondary Highway, Hard Surface
- Light Duty Road, Hard or Improved Surface
- Unimproved Road
- Trail



76 15 76 17 30 76 20 76 22 30 41 05 41 07 30 41 05

76 15 76 17 30 76 20 76 22 30 41 05 41 07 30 41 05

# State Game Lands #58



|                        |  |
|------------------------|--|
| Location:              | Mainville, PA<br>Columbia County   |
| Acres:                 | 12,646   |
| Terrain:               | Heavily Forested and Mountainous   |
| Prevalent Game:        | Deer, Bear, Turkey and Grouse  |
| Additional Ammedities: | Riffle Range (Located at the entrance off of Rt. 339, just outside Mainville, on Riffle Range Road)  |
| Hiking Trails:         | One designated trail, approximately 11.3 miles in length. Begins at the gate/parking area at the base of Firetower Road in Main Township and loops to the fire tower and back. |

## Directions to State Game Lands #58

Numerous access points for the state game lands are available. For the closest parking area from the Bloomsburg Visitors Center, follow Route 487 South for approximately 3.5 miles. Once you cross the bridge, turn left onto Mainville Drive. Continue on Mainville Drive for nearly 5 miles. Just outside of Mainville, turn right onto Fisher Run Road, followed by a sharp right onto Fire Tower Road.

For more information on all of the outdoor recreation amenities in Columbia and Montour Counties, please stop by the Columbia-Montour Visitors Bureau

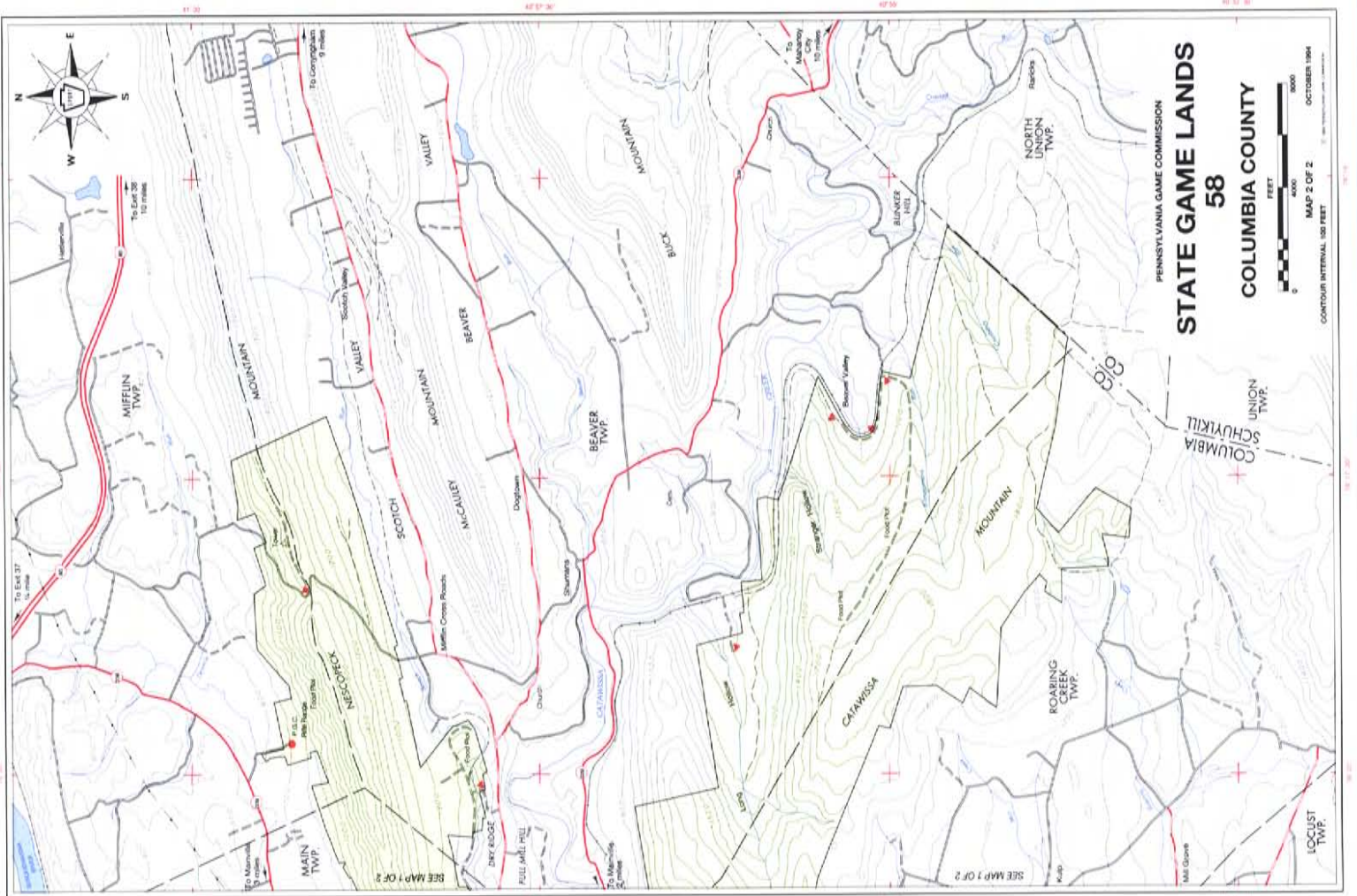
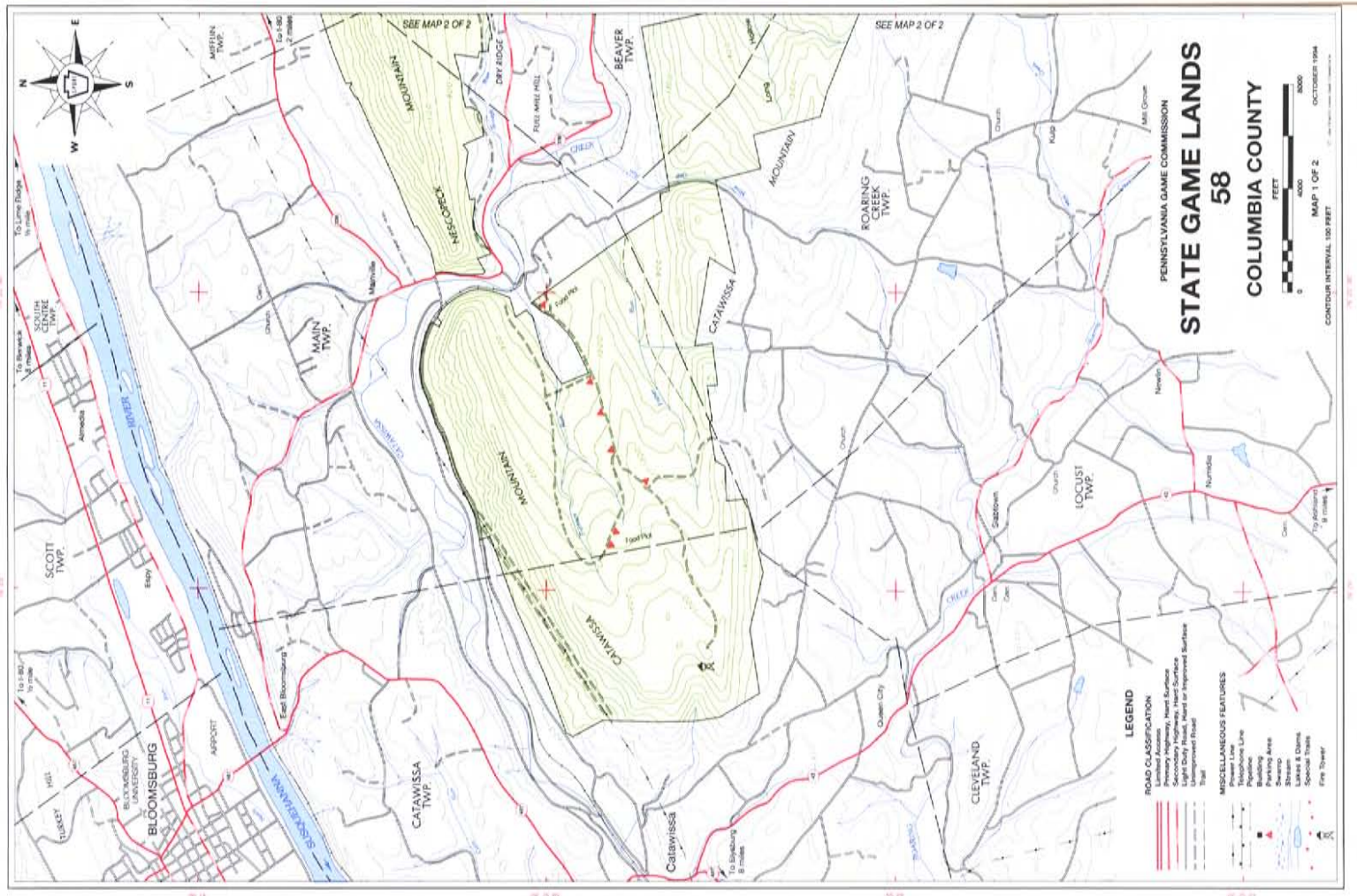
121 Papermill Road  
Bloomsburg, PA 17815

or

316 Mill Street  
Danville, PA 17821

1.800.847.4810  
iTourColumbiaMontour.com





# State Game Lands #115



|                 |  |
|-----------------|--|
| Location:       | Near Danville, PA<br>Montour and Northumberland County |
| Acres:          | 1,243  |
| Terrain:        | Mountainous  |
| Prevalent Game: | Deer, Turkey, Rabbit, Squirrel and<br>Grouse           |

## Directions to State Game Lands #115

Numerous access points for the state game lands are available. For the closest parking area from Interstate 80 - take exit 224 for Danville and head East on Route 54. In about 1 mile, turn right onto PA-642/Liberty Valley Road. In 1.3 miles, turn left onto Klein Road. In another 1.3 miles, turn right onto Bald Top Road, and bare left onto Snyder Road, which will drive you directly through the forest.

For more information on all of the outdoor recreation amenities in Columbia and Montour Counties, please stop by the Columbia-Montour Visitors Bureau

121 Papermill Road  
Bloomsburg, PA 17815

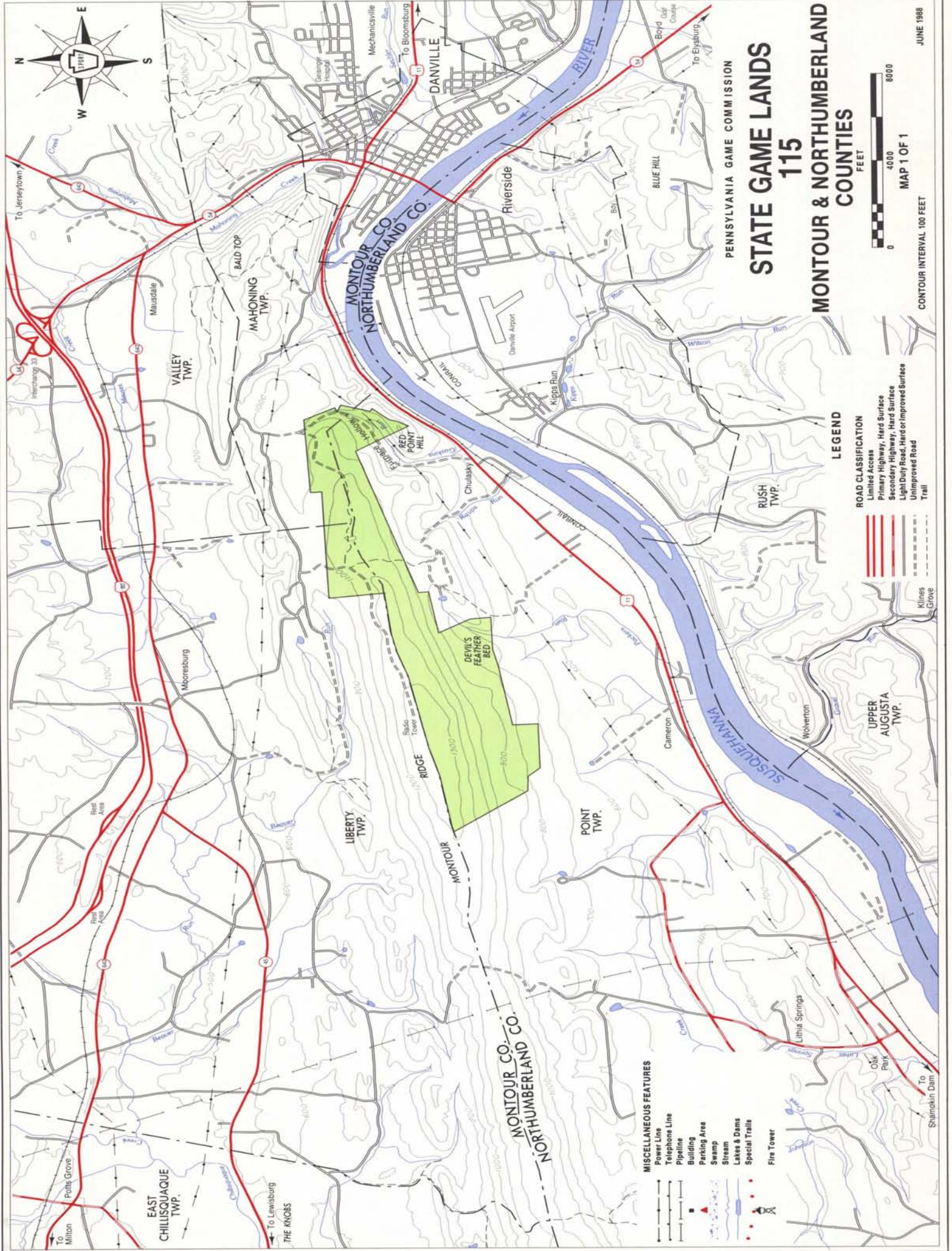
or

316 Mill Street  
Danville, PA 17821

1.800.847.4810  
iTourColumbiaMontour.com







PENNSYLVANIA GAME COMMISSION  
**STATE GAME LANDS  
 115**  
**MONTOUR & NORTHUMBERLAND  
 COUNTIES**



JUNE 1988

**LEGEND**

- ROAD CLASSIFICATION**
- Limited Access
  - Primary Highway, Hard Surface
  - Secondary Highway, Hard Surface
  - Light Duty Road, Hard or Improved Surface
  - Unimproved Road
  - - - Trail

- Interstate
- State Route
- County Road
- Township Road
- Private Road
- Right of Way
- Easement
- Fenced Area
- Swamp
- Lake & Dam
- Special Trails
- Fire Tower
- Power Line
- Telephone Line
- Pipeline
- Building
- Parking Area
- Stream
- Lakes & Dams
- Special Trails
- Fire Tower

**MISCELLANEOUS FEATURES**

- Power Line
- Telephone Line
- Pipeline
- Building
- Parking Area
- Stream
- Lakes & Dams
- Special Trails
- Fire Tower

EAST CHILLISQUAQUE TWP.

THE KNOBS

LIBERTY TWP.

MONTOUR

MONTOUR CO.  
 NORTHUMBERLAND CO.

POINT TWP.

UPPER AUGUSTA TWP.

RUSH TWP.

MAHONING TWP.

VALLEY TWP.

DANVILLE

BLUE HILL

RIVERSIDE

TO BLOOMSBURG

TO ELYSBURG

TO JERSEYTOWN

TO MILTON

TO LEWISBURG

TO SHAMPOIN DAM

TO ELYSBURG

TO BLOOMSBURG

TO JERSEYTOWN

TO MILTON

TO LEWISBURG

TO SHAMPOIN DAM

TO ELYSBURG

TO BLOOMSBURG

TO JERSEYTOWN

TO MILTON

TO LEWISBURG

TO SHAMPOIN DAM

TO ELYSBURG

TO BLOOMSBURG

TO JERSEYTOWN

TO MILTON

TO LEWISBURG

TO SHAMPOIN DAM

TO ELYSBURG

# State Game Lands #226



|                 |  |
|-----------------|--|
| Location:       | Millville, PA<br>Columbia County   |
| Acres:          | 4,335  |
| Terrain:        | Woodlots and Food Plots  |
| Prevalent Game: | Deer, Bear, Turkey, Stocked Pheasant, Rabbit, Squirrel and Grouse  |
| Hiking Trails:  | Approximately 4.3 miles, from a parking area along Ridge Road to the Spruce Run Road continuing over looped trails to a parking area along the Dodson Hill Road.<br><br>Also, approximately 3 miles, from a parking area along Giles pie Road to a parking area along Engles Road. |

For more information on all of the outdoor recreation amenities in Columbia and Montour Counties, please stop by the Columbia-Montour Visitors Bureau

121 Papermill Road  
Bloomsburg, PA 17815

or

316 Mill Street  
Danville, PA 17821

1.800.847.4810  
iTourColumbiaMontour.com

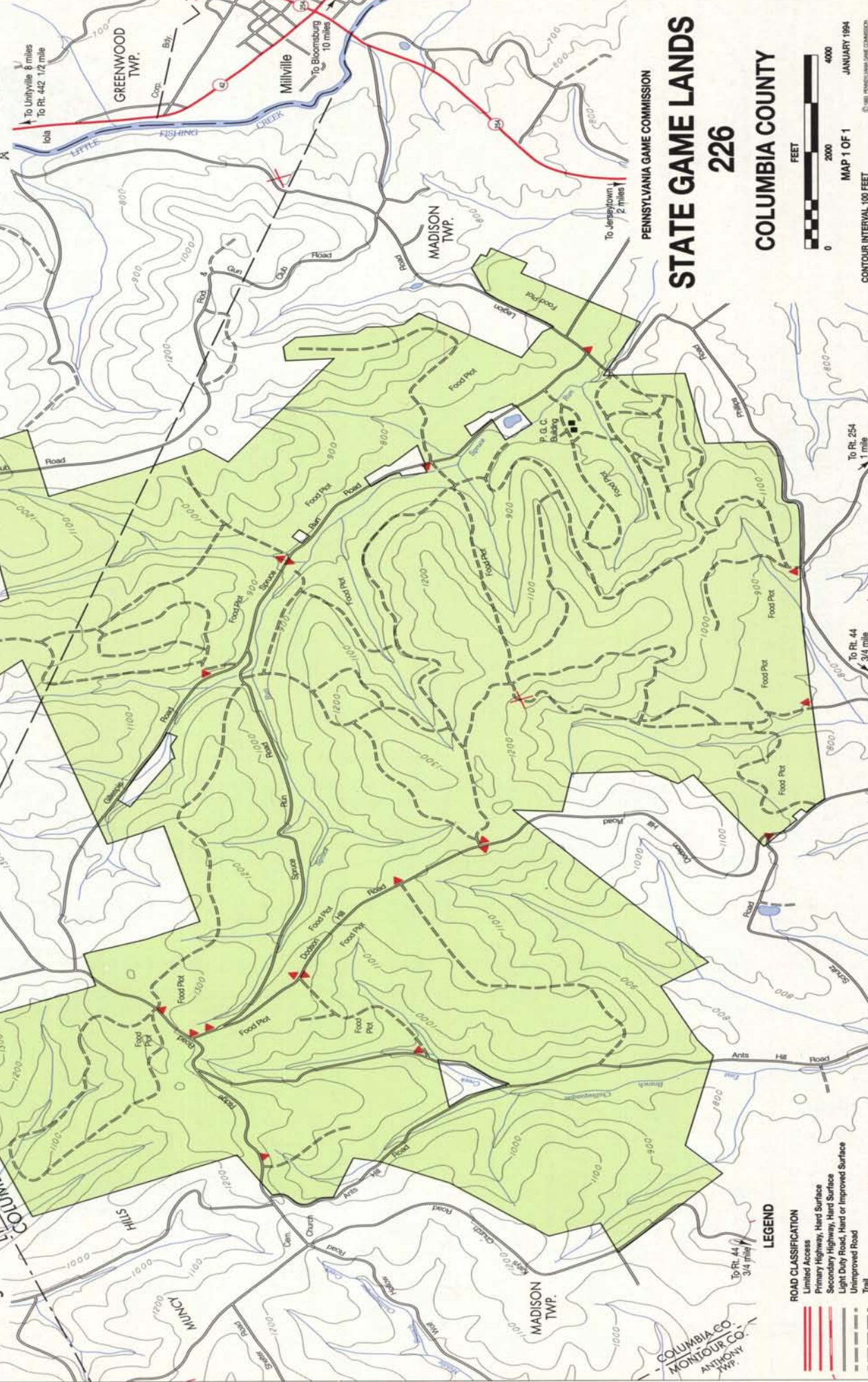
### Directions to State Game Lands #226

Numerous access points for the state game lands are available. For the closest parking area from Interstate 80 - take exit 232 for Buckhorn and head North on Route 42. Follow Route 42 for about 9 miles, then turn left onto PA-254/West Main Street. Follow for 1.5 miles and turn Right onto Spruce Run Road. Continue for nearly 1 miles and turn Left onto Legion Road. Parking will be on your Left.



MISCELLANEOUS FEATURES

- Power Line
- Telephone Line
- Pipeline
- Building
- Parking Area
- Swamp
- Stream
- Lakes & Dams
- Special Trails
- Fire Tower



STATE GAME LANDS  
226  
COLUMBIA COUNTY

PENNSYLVANIA GAME COMMISSION



MAP 1 OF 1

JANUARY 1994

CONTOUR INTERVAL 100 FEET

LEGEND

- ROAD CLASSIFICATION**
- Limited Access
  - Primary Highway, Hard Surface
  - Secondary Highway, Hard Surface
  - Light Duty Road, Hard or Improved Surface
  - Unimproved Road
  - Trail

# State Game Lands #329



|                 |  |
|-----------------|--|
| Location:       | Aristes, PA<br>Columbia and Schuylkill County  |
| Acres:          | 1,146  |
| Terrain:        | Forested   |
| Prevalent Game: | Deer, Bear, Turkey, Squirrel and Grouse  |
| Hiking Trails:  | Approximately .9 miles of trail situated in the NW corner of the game lands and connecting to an 8 mile trail on the Roaring Creek Tract of the Weiser State Forest. |

## Directions to State Game Lands #329

Numerous access points for the state game lands are available. For the closest parking area from Bloomsburg - follow Route 487 South and bare left onto Route 42 just outside Catawissa. Continue on Route 42 South for approximately 12 miles. Once in Aristes, make a sharp left onto Aristes Ringtown Road. The State Game Lands will be directly infront of you.

For more information on all of the outdoor recreation amenities in Columbia and Montour Counties, please stop by the Columbia-Montour Visitors Bureau

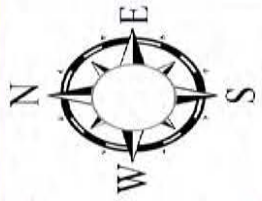
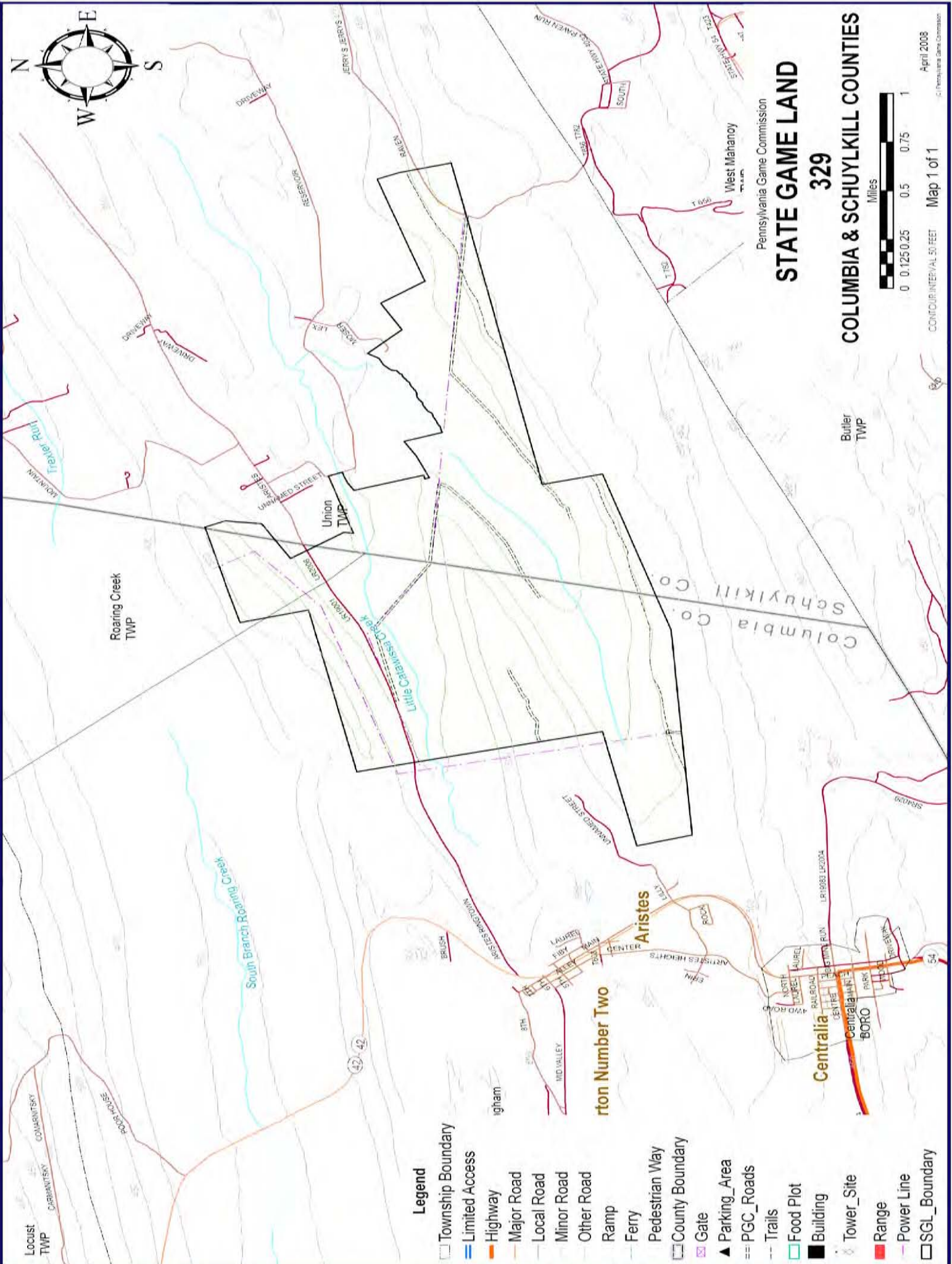
121 Papermill Road  
Bloomsburg, PA 17815

or

316 Mill Street  
Danville, PA 17821

1.800.847.4810  
iTourColumbiaMontour.com





- Legend**
- Township Boundary
  - Limited Access
  - Highway
  - Major Road
  - Local Road
  - Minor Road
  - Other Road
  - Ramp
  - Ferry
  - Pedestrian Way
  - County Boundary
  - Gate
  - Parking\_Area
  - PGC\_Roads
  - Trails
  - Food Plot
  - Building
  - Tower\_Site
  - Range
  - Power Line
  - SGL\_Boundary

Pennsylvania Game Commission  
**STATE GAME LAND**  
**329**  
**COLUMBIA & SCHUYLKILL COUNTIES**



April 2003  
 CONTOUR INTERVAL: 50 FEET  
 Map 1 of 1  
 © Pennsylvania Game Commission