

## October 2014 Traffic Recap

### Fort Lauderdale-Hollywood International Airport

#### Total Traffic Increase

Total passenger traffic for October 2014 was 1,820,243, up 10.8 percent over October 2013. Domestic traffic was up 6.2 percent and international traffic increased by 37.9 percent.

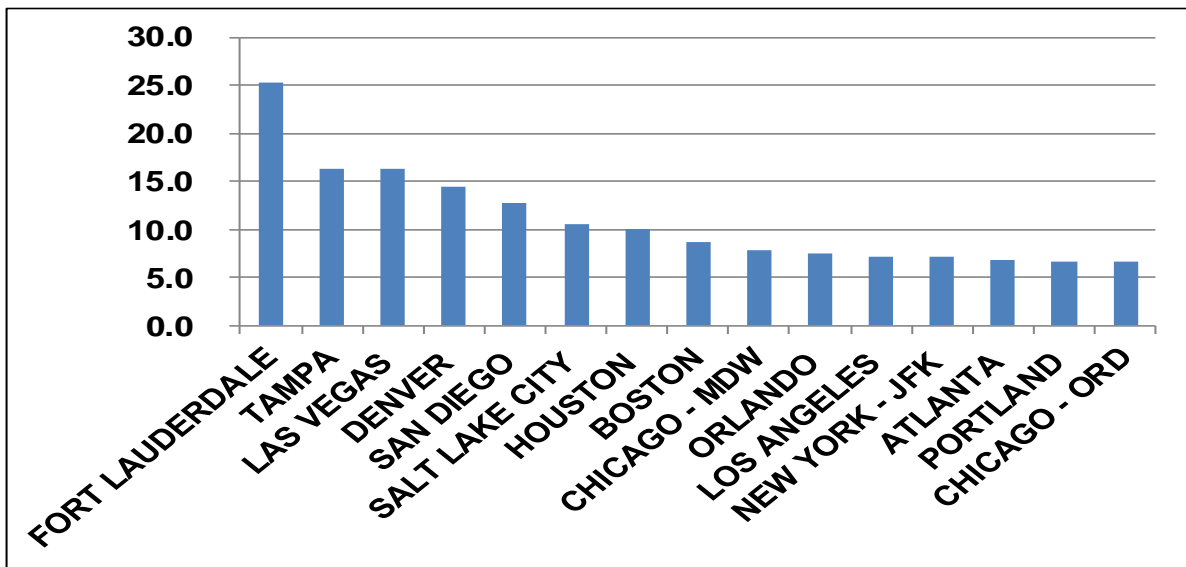
#### International Traffic

October marked the 11<sup>th</sup> consecutive month of double digit growth in international passenger traffic. Seven out of the last eleven months showed international growth exceeding 20 percent. October's 37.9 percent increase in international traffic was the highest month-over-month increase on record.

International traffic is now 19 percent of total passenger traffic compared to 15 percent five years ago.

#### FLL Fastest Growing

The most recent Airports Council International data shows that from January through September 2014, FLL was the fastest growing large airport in international traffic. During the same time frame, MIA ranked 26<sup>th</sup> with international traffic down -.6 percent. The chart below shows the growth rate for the top U.S. airports.



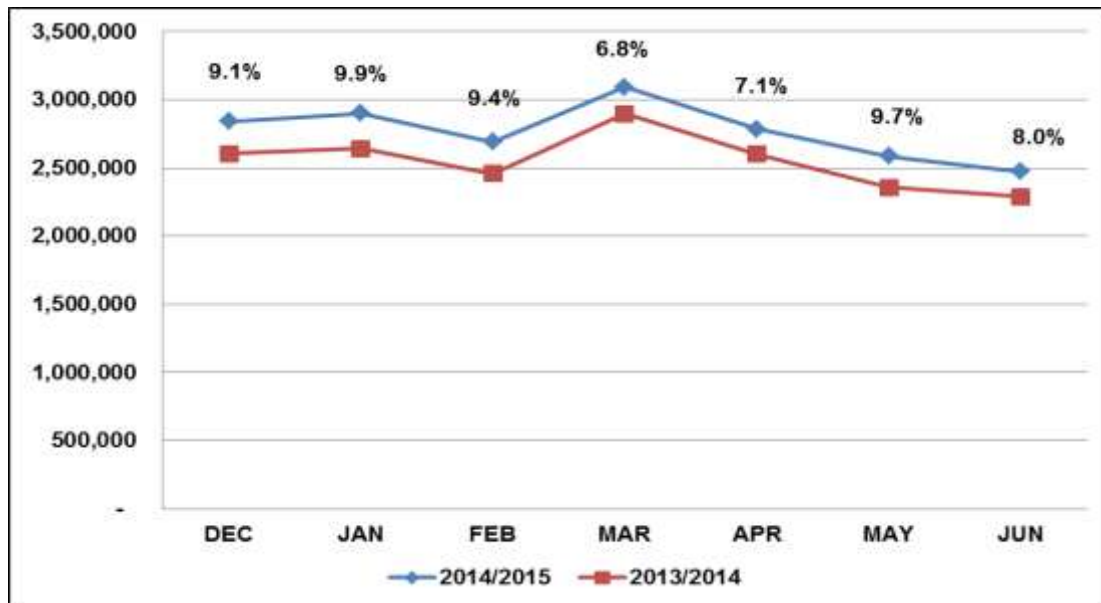
### Airlines' Passenger Counts

The table below shows October's change in passenger activity for FLL's major carriers.

Airline	2014	2013	Change	Percent Change
JetBlue	407,027	334,981	72,046	21.50%
Spirit	372,044	321,057	50,987	15.90%
Southwest	286,359	303,745	-17,386	-5.70%
Delta	229,968	215,168	14,800	6.90%
US Airways	117,208	120,931	-3,723	-3.10%
United	107,426	114,062	-6,636	-5.80%
American	79,493	71,324	8,169	11.50%
Air Canada	37,241	26,895	10,346	38.50%
Frontier	22,992	8,930	14,062	157.50%
Virgin	20,040	22,162	-2,122	-9.60%

### Available Seats

FLL's outlook from December through June is very favorable. The chart below shows the percentage change of scheduled available seats. Passenger traffic growth should correspond accordingly.



### New Flights

Recent and new service that will have a positive impact on passenger traffic growth includes:

- Allegiant began service to Cincinnati in October. It will begin flights to Syracuse in February 2015 and Columbus in March 2015.
- Azul Brazilian Airlines began daily service to Sao Paulo, Brazil on December 2<sup>nd</sup>. They will add a second flight in January 2015.

- Frontier began service to Cincinnati in October. It will begin service to St. Louis in January 2015.
- JetBlue began service to Pittsburgh, Las Vegas, Jacksonville, and Cartagena, Colombia on October 29<sup>th</sup>.
- Southwest began service to Dallas Love Field in November.
- Spirit will begin service to Cleveland in February 2015.
- TAME began service to Quito, Ecuador on October 17<sup>th</sup> and Guayaquil, Ecuador on November 20<sup>th</sup>.
- Virgin America will begin seasonal service to New York (JFK) this December.
- Volaris began service to Mexico City, Mexico on December 1<sup>st</sup> and to Guadalajara, Mexico on December 4<sup>th</sup>.

### Passengers and Share Year-to-Date

The table below shows the year-to-date passenger traffic and market share for FLL's top carriers.

Airline	Passengers	Market Share
JetBlue	4,199,849	20.8%
Spirit	3,783,922	18.7%
Southwest	3,637,019	18.0%
Delta	2,564,094	12.7%
US Airways	1,371,985	6.8%
United	1,315,985	6.5%
American Airlines	899,918	4.5%
Air Canada	539,619	2.7%
Virgin America	274,816	1.4%
Silver	197,499	1.0%