

The Aga Khan Award for Architecture

New Life for Old Structures

Isfahan and Yazd, Iran

Architects and Clients:

Urban Development and Revitalisation Corporation

Tehran, Iran

Completed:

Ongoing since 1992

Table of Contents

2001 Technical Review Summary	23 pages
Architects' Presentation Panels	11 pages
Thumbnail Images of Scanned Slides	8 pages
List of Visual Materials	21 pages



by Joylon Leslie

New Life for Old Structures

Isfahan and Yazd, Iran



Architect

Urban Development and Revitalization Corporation

Client

Urban Development and Revitalization Corporation

Design

1990 - ongoing

Completed

1992 - ongoing

New Life for Old Structures

Isfahan and Yazd, Iran

I. Introduction

The programme comprises a range of interventions in several of the historical cities of Iran, aimed at encouraging a process of market-driven urban regeneration. Building on a joint process of documentation and research of the historical urban fabric in these cities, a number of houses and public buildings have been acquired, restored and sold or let to new owners or tenants who have identified new uses for these buildings.

The physical restoration, while an achievement in itself, serves as a catalyst for a process of awareness-raising as to the intrinsic value of the historical urban environment and the commercial viability of the restored buildings. In a context where the bulk of private property investment takes place in peri-urban areas, the programme specifically aims to attract investment in the historical urban centres by promoting the reuse of key buildings as a means of encouraging sustainable regeneration of these neighbourhoods. Along with other initiatives in this field, the restoration projects themselves provide opportunities for employment and training of craftsmen in a range of traditional construction skills, while demonstrating the rich cultural heritage of Iran to users of and visitors to the buildings. While the overall programme covers a wide range of related activities, to which reference will be made as appropriate, the primary focus of this review is on eight completed projects in Isfahan and Yazd, which illustrate the general approach being taken.

II. Contextual Information

a. Historical background

In parallel with significant investment in the restoration of major historical monuments in Iran, official policies aimed at promoting urban regeneration have been introduced, both to control development in the historical centres and to preserve the surviving urban fabric. Addressing a wide range of urban development issues, the Urban Development and Revitalization Corporation (UDRC) of the Ministry of Housing and Urban Development of the Islamic Republic of Iran currently has some thirty urban revitalization and development projects in twenty-one cities. The subject of this review is eight restoration initiatives in the historical centres of Isfahan and Yazd.

While restoration work was undertaken under the auspices of the Ministry of Housing as early as 1988, the UDRC was established as a corporation in 1997, with 51 per cent of private investment. All work related to historical buildings is carried out in close collaboration with the Iranian Cultural Heritage Organization (ICHO) of the Ministry of Culture and Islamic Guidance, which is responsible for identifying, registering and restoring significant historical monuments, under the terms of legislation enacted in 1989.

The urban regeneration programme takes place in the context of rapid population growth and widespread **in-migration**, which has resulted in extreme pressure on urban land and housing. The second Five Year Plan of the Islamic Republic of Iran, which came into force in 1994,

attempts to take account of the value and potential of the historical centres as part of measures to promote urban development.

Isfahan currently has a population of some two million. Dating from Sassanian times, it became the capital of the Seljuk dynasty from 1051 but was laid waste by Tamerlane in 1388, when most of the population perished. Chosen as the capital for the Abbasid dynasty in 1598, the most significant investments in both public and private buildings were made during the Safavid dynasty in the seventeenth century. Much of the surviving historical fabric, which today comprises some eight hundred buildings of historical significance in an area of 1,300 hectares, dates from this era, although many buildings were added to or decorated during the Qajar dynasty, in the nineteenth century.

The city of Yazd dates back to the invasion of Iran by Alexander the Great in 330 BC. Important during Sassanian times, it became a strategic point on caravan routes to central Asia and India after its conquest by the Arabs in AD 642. Its remoteness seems to have spared it from destruction at the hands of the Mongols, after which it again flourished during the fourteenth and fifteenth centuries. Today, Yazd is an important trading and industrial city, with a population of more than a million.

b. Local architectural character

Between the many important public buildings that survive in Isfahan and Yazd, the historical centres largely comprise a dense built fabric, primarily of mud or fired brick, with one or two floors. Access within these neighbourhoods is by means of a network of narrow streets and alleys, some of which have homes built over them. Commercial activity was traditionally confined to bazaars, often arranged by trade, with stalls opening directly onto the street, covered by brick vaults or domes. The organization of traditional homes around internal courtyards means that, apart from some examples of decorated entrance doors, the external façade of the house is of little decorative significance. However, the articulation of internal courtyard elevations, and decoration within the surrounding rooms in many cases, more than makes up for the understatement of the street façade.

A move away from the use of the internal courtyard as the focus for domestic life has, in more recent times, resulted in the construction of homes, often on more than two floors, that directly overlook the narrow streets or alleys. Along with the general neglect of traditional homes, which are no longer perceived as appropriate for contemporary domestic needs, unregulated development poses a very real risk to the historical fabric. In an effort to try to address this issue and encourage development of historical neighbourhoods, a number of careful infill developments have been undertaken by the UDRC on the sites of derelict homes in both Isfahan and Yazd.

c. Climatic conditions

Isfahan (altitude 1,570 metres above sea level) has a dry temperate climate, with annual rainfall limited to some 120 millimetres. Yazd (altitude 1,215 metres above sea level) has a typical desert climate, characterized by high diurnal fluctuations in temperature throughout the year. A range of traditional forms and techniques has been developed within traditional

domestic construction to cope with the respective environments, principally through the use of massive construction to provide adequate thermal storage. In addition, the major spaces in traditional homes are carefully oriented and make ingenious use of the microclimate created through the use of planting and water in the central courtyards.

In the case of Isfahan, timber screens and external curtains are used to reduce direct sunlight and glare to internal spaces, while homes in Yazd have a large vaulted double-height space, open to the courtyard on one side, for use in summer. Most homes in both Isfahan and Yazd have semi-basements, also for summer use. While some homes in Isfahan have ducts to promote natural ventilation, this is explored more fully in Yazd through the widespread use of wind funnels or *badgir*. Some homes in Yazd have a subterranean room or *payab*, up to 15 metres underground and accessed by stairs, where the occupants can escape the midday heat.

d. Site context

Apart from the distinctive tiled façades, domes or minarets that rise above the skyline or decorate the principal public spaces in Isfahan and Yazd, the mud-plastered walls of one- or two-storey homes predominate along the complex network of pedestrian alleys or narrow vehicular streets that lie between the main avenues in the centre, many of which are lined with trees. While open public spaces are traditionally associated with mosques or shrines, selective clearance of derelict buildings in both cities has allowed for the creation of several small squares and the widening of some alleys, some of which have been paved or landscaped by the municipality and the UDRC. This upgrading is a response to changing perceptions of public space while respecting the private realm of the internal courtyard, which remains the focus for domestic life within traditional houses.

III. Programme

For the purposes of this review, the ‘programme’ refers to ongoing support being provided by the UDRC for the regeneration of a number of historical urban centres in Iran. Specific interventions, comprising the restoration of eight buildings in Isfahan and Yazd, are described below.

a. What conditions gave rise to the formulation of the programme?

The programme is part of a range of initiatives aimed at safeguarding the unique urban fabric of the historical cities of Iran, within the context of development plans that seek to provide adequate living conditions and services for an expanding urban population.

Since 1987, legislation has been in place to limit the scale and nature of development in designated historical centres. It is in this context that the UDRC and others provide support for the selective restoration of some historical buildings for reuse, to meet the contemporary needs of urban communities. This has been facilitated through the availability of partial funding for the restoration of certain registered historical buildings through the Cultural Heritage Organization. The restoration of two of the projects under review was partially funded in this manner.

b. Objectives

The primary objective of the programme is to arrest the physical and social decline of the historical urban centres through the restoration of significant buildings and their reuse for purposes that meet the current needs of the urban community. The strategy is to raise awareness of the cultural value of surviving historical buildings while demonstrating their commercial and practical viability for possible private investment on a wider scale within these neighbourhoods. By exploiting the prevailing differentials in urban land and property prices, the UDRC has attempted to create the conditions for a sustainable regeneration of the historical fabric. The programme has also set out to create much-needed employment and opportunities for the development of specialist skills, in close collaboration with other organizations involved in restoration activities.

c. Functional requirements

While the brief for individual projects under the programme differs according to the building and its context, criteria for the selection of individual buildings for restoration primarily revolve around the structure's potential for reuse to meet contemporary needs. This has resulted in the restoration of a range of historical buildings and their adaptation for reuse as offices, a restaurant, an arts centre, a seminary, a school and a centre for early childhood development. In addition, two of the buildings that have been restored and were initially used as offices are currently being redeveloped as guest houses.

IV. Description

The five projects in Isfahan and three in Yazd that are the subject of this review illustrate the range of historical buildings that have been restored and adapted for reuse under the UDRC programme. While there have been few significant changes to the structure or layout of the buildings under review, the characteristics of each as adapted to a new use are described. Where possible, traditional materials and skills have been used throughout the restoration process, which has also provided opportunities for both employment of specialist craftsmen and training of others. All aspects of the planning and restoration processes on the buildings under review have been carried out by Iranian professionals.

The Vazir Bathhouse, Isfahan

This dates from the end of the Safavid period (early eighteenth century) and has been restored and converted into the Institute for the Intellectual Development of Children and Young Adults. The endowed property, which had been abandoned for some time prior to its identification for potential reuse, has a built area of 560 square metres.

Occupying a site close to the bazaar, the bathhouse is entered via steps leading down to a series of domed and vaulted spaces, which follow an established pattern, but the layout of which has been dictated by the surrounding urban fabric. Within the massive structure of fired bricks, continuity of circulation has been achieved by the removal of some of the dividing walls that provided privacy for its original users. The high vault of the original dressing room or *bineh* is now used as a library, while the adjacent steam room or *garmkhaneh* serves as a

play and reading area. The more intimate spaces that originally housed pools or *khazineh* are now used for art lessons. Three of the original pools have been retained in the centre of the rooms and adapted for use as displays.

The dado of blue glazed tiles that runs throughout the building has been adapted from that traditionally used in bathhouses to provide an appropriately robust, colourful and child-friendly environment. Apart from a small section of the original flagstones, quarry tiles have been laid with glazed tile inserts in patterns that enable the children to play games. Above the tiled area, walls are plastered and painted white, which reflects natural light from the top-lights on the apex of each dome. To the east of the building, the traditional ramp, which animals were led down to draw water from the well, has been ingeniously transformed into a small auditorium. In this and other spaces, there are paintings illustrating the original uses of the converted building. Storage areas and bathrooms have been accommodated in what were originally ancillary spaces to the bathhouse. Complemented by the imaginative use of furnishings and floor-based desks, an environment that is highly suitable for children has been created out of the original bathhouse.

The Qodsieh House, Isfahan

Said to be one of the oldest houses in Isfahan, the Qodsieh House dates from the early Safavid period (seventeenth century) and is currently used as a religious seminary. The house has a built area of 1,625 square metres and follows the traditional layout of a domestic space ranged around an internal courtyard. Access from the street is through the typical domed space or *hashti*, which leads through a narrow passage to the northern end of the central courtyard; here, a series of reception rooms form the *birouni* or area used for guests. These spaces, in which painted plaster decoration has been carefully restored, are currently used as meeting rooms for the seminary. The more private family quarters or *andarouni* lie to the south of the courtyard and comprise a deep vaulted double-height central space where some of the original Safavid painted decoration has been uncovered.

The frames and coloured glass of the distinctive three-part sash windows in the screen facing the courtyard have been meticulously restored, as have the screens that give onto the main *iwān* from rooms on the upper floor. The rooms on both floors of the side ranges have been effectively converted into offices, with small open balconies between them used for study. A small kitchen has been introduced into one of the semi-basement rooms. The sizeable central courtyard – with its mature pines providing shade to the main reception rooms, each fronted by a pool – provides an important focus for the restored building. Damaged sections of the traditional stone facing on the raised platform of the reception rooms have been carefully replaced. While the physical changes to the original form have been kept to a minimum, the Qodsieh demonstrates how effectively such buildings can be adapted to new uses.

The Mojtahedzadeh House, Isfahan

Dating from the Qajar period (late eighteenth century), this house is currently used as a school. The layout of the building, which has a built area of 450 square metres, illustrates how a preoccupation with privacy has been reconciled with the limits posed by the site. A labyrinthine entrance leads indirectly to the guest area or *birouni*, which is separated from the

private family quarters or *andarouni* by a small secondary courtyard. Both quarters in turn face a larger central courtyard, which has an elaborate pool at its centre.

A distinctive feature, unusual for homes in Isfahan, is a pair of wind-catchers or *badgir*, which provide ventilation to the transverse space behind the main reception room, currently used as an assembly room. This vaulted space has fine painted stucco decoration, as does the smaller domed parlour or *sehdari*, currently used as the teachers' office, which also has elaborate sash windows with coloured glass and lies between the two courtyards. External decoration is confined to painted timber under the projecting eaves, which, along with the planting in the main courtyard, shades the northern range of rooms. The principal change to the building to meet the contemporary needs of the school has been the joining of three rooms on the west of the courtyard to form a single classroom and the temporary roof erected over the smaller courtyard to protect the children's play area from the elements.

The Nilforoushan House, Isfahan

This is an important example of domestic architecture of the Qajar period. Originally used as an office for the UDRC, the house is currently being developed as part of a guest-house complex by its new owner. With a built area of some 965 square metres, two principal ranges of rooms, raised above a half-basement, face a large internal courtyard. Access from the street is via a long passage leading to the *hashti*, from where one passage leads directly to the family quarters while another leads to the courtyard. The northern range, housing the family quarters, centres on a deep double-height space with a full-height timber screen containing five glazed sash windows, which have been restored. A flat painted stucco ceiling is supported on two wooden columns, while the inner section of this room is covered by elaborate carved plaster *muqarnas* which are also used at the cornice level.

The upper levels on either side of the reception room have smaller glazed timber screens, which were replaced during restoration. This ensemble is mirrored on a somewhat more modest scale in the southern range which houses the guest rooms and is screened from the family quarters by planting. Blank side walls, which are articulated with shallow plaster arches, form the boundary of the relatively narrow site and lend the courtyard the symmetry that characterizes many houses of this era. The Nilforoushan provides a showcase for a range of traditional construction skills – including joinery, painting and carved plaster decoration – which were used by local craftsmen to meticulously restore the building over a period of two years.

The A'alam Va'ez House, Isfahan

With a built area of 1,118 square metres, this building demonstrates the exuberant decoration that characterized the Qajar period. The complex was used as an office for some five years, prior to its ongoing development into a guest house. A long double-height corridor leads from the *hashti* to the principal reception room, raised above a semi-basement, on the southern side of the central courtyard.

Facing this across a central pool and planting, the reception rooms on the northern side lie behind a full-height colonnade, supporting elaborately decorated eaves and a semicircular

central gable of carved and painted plaster. Behind this, in the central bay, are double-height glazed timber screens or *orossi*, with characteristic upward-sliding sash windows, with coloured glass that filters light entering the two principal formal spaces behind. These rooms are articulated with carved plaster niches, richly decorated with inlaid mirrors and elaborate painted plaster. Side rooms on the upper level overlook the reception space through smaller glazed timber screens with sash windows. Three single-storey rooms, separated by narrow bays containing stairs, are ranged on either side of the courtyard, at a slightly lower level than the reception spaces.

The Khan Bathhouse, Yazd

Covering an area of 1,170 square metres, this complex of brick domes and vaults is now used as a restaurant. It comprises the customary sequence of dressing room or *bineh* (now a tearoom) and washroom or *garmkhaneh* (now part of the restaurant) and additional spaces associated with bathing. Access to the complex is through a vaulted corridor, which steps down towards the entrance to the *bineh*, more than a metre below the current level of the adjacent bazaar.

While the integrity of the structure has been kept, the original dividing walls between the washrooms have been removed to accommodate the restaurant. The raised platforms or *sofeh* that surround the main domed spaces have been retained where possible, as has the distinctive vaulted sitting area or *shahneshin*, overlooking a large pool, for use by the khan and his guests. Apart from some restored sections of painted plaster, the original brickwork has been left largely exposed in the original *bineh*, while the plasterwork of the dome and vaults has been retained throughout. The original octagonal pool has also been retained in the *bineh*, although the pool in what was the *garmkhaneh* has been removed. In spaces now used for the restaurant, the traditional dado of glazed tiles has been recreated, and the same tiles cover the raised *sofeh*.

Modern services, such as the outlets for mechanical ventilation from roof-mounted coolers, which are concealed behind discreet glazed-brick panels, have been carefully incorporated into the existing structure. The restaurant kitchen has been accommodated in spaces that were originally used for rubbing down and for the water-storage pool or *khazineh* in the bathhouse. Bathrooms have been located on a half-level above the main restaurant space. The bathhouse complex, which is popular with visitors and residents alike, demonstrates the effective and imaginative reuse of a traditional building for a modern purpose.

The Moayed A'layi House, Yazd

Dating from the Qajar period, the building has many of the characteristics of earlier Safavid houses. Since its restoration in 1997, it has been the UDRC office in Yazd, and it has not been necessary to make any significant changes to the structure or layout of the building for this use. As in the Mojtahedzadeh House in Isfahan, the layout responds to the perceived need for privacy. In this case, the *birouni* comprises two vaulted spaces facing each other across a small court with a pool, adjacent to the entrance from the street. A separate corridor leads to the main courtyard, which on its northern side has a single-height *panjdari* with five glazed doors, screening a transverse interior space.

The upper level comprises a low-vaulted open space overlooking the planting and central pool of the main courtyard. A staircase beneath the *panjdari* leads to an underground room or *payab*, which lies more than 10 metres below ground level, where the temperature is significantly lower. This space, which is primarily for summer use, is ventilated and lit through a vertical shaft that rises into the courtyard of the *birouni*. Across the main courtyard is a vaulted open double-height *iwān*, raised above a semi-basement and oriented towards the north. A wind tower or *badgir* is situated over a deep niche at the back of the *iwān*, which it ventilates. Three smaller rooms, or *sehdari*, each with three glazed doors, run along the north-western range of the building, with stairs leading to the upper level in the narrow bays between them. On the fourth side of the courtyard are two small service rooms, set in a wall articulated with plaster arches to provide an appropriate semblance of symmetry. In order to raise awareness about restoration issues and gain hands-on experience, architectural students from the University of Yazd were actively involved in the restoration of the house, which has recently been sold to the Iran Tourism Organization.

The Hosayniyeh Nazem ot-Tojar, Yazd

With a built area of some 850 square metres, the Hosayniyeh Nazem ot-Tojar is a fine example of the religious structures erected in the middle of the Qajar period. Under the terms of its endowment, this *hosayniyeh* is used only once a year for religious purposes. Originally used after its restoration as a museum of printing and journalism, the building was transformed late in 2000 into a community arts centre and is now used by the surrounding community for drawing, painting, sculpture and drama classes.

Unusually for a building of this sort, the central space of the *hosayniyeh* is covered by a large vault, focusing on a raised decorated platform for devotional use. The main teaching spaces are arranged around three sides of this double-height space on two levels. Access from the street is directly to the upper level, through a modern glass door which, set behind the original wooden entrance door, effectively opens the space to the public realm.

The upper level is used for drama classes as well as for public art exhibitions, for which purpose the walls have been lined with protective screens, aimed at limiting damage to the plaster finish. Stairs lead down to the lower level, where the airy vaulted spaces that adjoin the central area are used for art classes of varying techniques and sizes. The original Qajar painted frieze and decorative panels have been retained on the plastered walls, while a dado of modern tiles with a matching floor surface, has been introduced by the current users. While spatially effective for the new functions, these spaces presently rely largely on artificial lighting for classes. It is assumed that this will change once they have been opened out to adjacent open ground, which is being purchased so as to have an outdoor area for drawing or sculpture classes or for exhibitions. To the rear of the site, an open courtyard with a central pool, surrounded by deep vaulted spaces on the lower level and an upper terrace, has been converted into a sculpture court.

V. Construction Schedule and Costs

A brief summary of the histories of the various restoration projects has been provided below, together with approximate project and square metre costs for some buildings. Unless otherwise stated, funding for purchase and restoration was from UDRC sources. Given the specialist skills involved in many aspects of the restoration, unit costs are inevitably higher than the average costs of new building. Far from affecting the commercial viability of the projects, however, this differential is more than offset by the low original purchase price of the properties when compared to the cost of new, purpose-built space available in developments in peri-urban areas. While it has not been possible to determine the actual running costs of the restored buildings, it is believed that maintenance costs are likely to be significant, given the nature of the materials used and the skills needed for any possible repairs.

The Vazir Bathhouse in Isfahan, which was endowed during the seventeenth century, was found abandoned by the UDRC in 1990 and was opened after restoration in 1993. It is currently being used as a centre for the Intellectual Development of Children and Young Adults, under the auspices of, among others, the Ministry of Education. Ownership remains with the Ministry of Religious Endowments (Awqaf). The total project cost was USD 15,000, and the square metre cost was USD 26.50.

The Qodsieh House, which is thought to be one of the oldest surviving houses in Isfahan, was purchased in 1991 and restoration was completed in 1993. Originally intended for use as an arts university, it was used as an office for two years until 1996, when it was leased for use as a religious seminary. The building is owned by the Cultural Heritage Organization. The total project cost was USD 22,500 with a square metre cost of USD 15.

The Mojtahedzadeh House in Isfahan was purchased in 1990 and, after restoration, was leased in 1992 for use as a school for religious instruction. The total project cost was USD 15,000 with a square metre cost of USD 30.

The Nilforoushan House in Isfahan was originally converted from domestic use into a school. It was purchased in 1995 and restoration of the building, which took three years, was partially funded by the Cultural Heritage Organization. Used as an office by the UDRC until 1999, it was then sold to a private entrepreneur who is developing two adjacent sites as a guest-house complex, with the historical house as the main focus. The total project cost for the original restoration was USD 50,000 with a square metre cost of USD 35.

The A'alam Va'ez House in Isfahan was purchased in 1996 and its restoration was partially funded by the Cultural Heritage Organization. For three years after restoration it was used as an office by the UDRC, then in 1999 it was sold and the new owner is in the process of developing the building and nearby property into a guest house. The total project cost of the original restoration was USD 56,250 with a square metre cost USD 51.

The Khan Bathhouse in Yazd was purchased in 1995 and restored and converted over a period of two years. It was sold in 1997 to the Iran Tourist Organization who now lease it out

as a popular restaurant. The total project cost of the original transformation was USD 53,750 with a square metre cost of USD 42.50.

The Moayed A'layi House in Yazd was purchased in 1995 for the equivalent of about USD 2,000. Restoration was complete in 1997 and cost approximately USD 22,500 or about USD 22 per square metre. Once completed, the building was used as the UDRC office in Yazd, to demonstrate the viability of such buildings for contemporary use. It has subsequently been sold to the Iran Tourist Organization in Yazd.

The Hosayniyeh Nazem ot-Tojar in Yazd was purchased in 1995 and, after restoration by the UDRC, was used from 1997 as a museum of printing and journalism. In late 2000, it was transformed into an arts centre, since when it has been used for drawing, painting and sculpture classes by the local community, under the management of the Ministry of Culture and Islamic Guidance. The total project cost was USD 75,000 USD and the square metre cost was USD 20.

VI. Technical Assessment

a. Functional assessment

In general, effective use for contemporary needs has been made of all the restored spaces, but perhaps more creatively in those buildings that currently serve a public function as opposed to those used as offices.

In the case of the Vazir Bathhouse in Isfahan, the conversion of the well-ramp into a small stepped auditorium for the children who now use the building, shows real ingenuity, while the adaptation of traditional finishes (glazed tiles) for new needs is effective. In the case of the Khan Bathhouse in Yazd, the varied volumes within the original structure have been exploited to meet the needs of new users, while traditional finishes have again been reinterpreted for new functions. Likewise, the conversion of the Hosayniyeh Nazem ot-Tojar in Yazd demonstrates the functional versatility of the large vaulted spaces that characterize many such public buildings.

In many of the restored houses, including the Qodsieh House, the principal reception rooms have been effectively adapted into modern meeting rooms, while the smaller domestic spaces that flank the courtyard make appropriate offices. In the case of the Mojtahedzadeh House, the finely decorated *sehdari* has been sensitively converted into a teachers' room while allowing for effective supervision of children in the adjacent spaces. The separate courtyards of the Moayed A'la'i House in Yazd have proved well-suited to contemporary needs, in much the same way as some modern 'courtyard offices' aim to maximize natural lighting and ventilation.

In the case of the Nilforoushan and A'alam Va'ez houses in Isfahan, the initial restoration for office use, which was reportedly effective, has now been superseded by the possible development of both buildings as guest houses. While there are examples in Isfahan of the virtual rebuilding (partly using modern materials) of historical homes, in order to provide the necessary spaces and services needed for guest accommodation, the owner of these two

houses will develop adjacent sites for this purpose. In both cases, the restored houses will serve as public rooms for the guest-house complex, in something of a reversion to their original use.

b. Climatic performance

Given that they follow traditions of building that have been tested over generations, the restored buildings are well-suited to the climatic conditions that prevail in Isfahan and Yazd. This is demonstrated by the careful orientation of the major spaces, both open and enclosed, in all of the restored houses, to optimize their environmental performance in summer and winter. Both the wind funnels, or *badgir*, which direct breezes through the inhabited spaces of the house, and the use of semi-basements and deep underground *payab*, demonstrate a highly developed understanding of the environment. Elaborate glazed timber screens control the levels of light in the major internal spaces, while alabaster panels are used to provide indirect light to semi-basements in some cases. While few of these features are now used in modern construction in Iran, their restoration enables the new users of the buildings to enjoy a well-tempered environment, while raising awareness of their effectiveness for contemporary needs.

In the case of the bathhouses, their semi-subterranean location, together with a massive structure of domes and vaults, helps to protect the internal spaces from the extremes of temperature. The tradition of small glass skylights in domes has been adapted to meet modern needs and provides adequate levels of natural lighting. While the baths were originally built to retain the heat and moisture generated for the steam room, measures have been introduced to improve ventilation, through both natural and mechanical means, for the new needs of the spaces. The use of glazed tile panels to conceal vents for coolers in the Khan Bathhouse in Yazd is an example of how modern interventions can be sensitively handled.

Simple but effective traditional techniques of rainwater disposal have been retained for both flat or domed roofs. In Isfahan, galvanized downpipes have been built into the width of the brick walling, while in Yazd, use has been made of recessed vertical channels in the external walls, lined with fired bricks, to limit erosion.

In addition to their traditional cultural significance in the region as symbols of paradise, the use of water and planting in central courtyards of traditional houses in Iran and elsewhere has a practical side in the often harsh climate. At its most practical level, the walls surrounding the courtyard help to protect the domestic environment from the hot winds and dust, and to reduce glare. The introduction of water through channels or pools helps to cool this enclosed space while giving life to valuable trees and plants that provide shade and whose transpiration helps to improve humidity. The attention paid to the courtyard in the restoration of the homes in Isfahan and Yazd, therefore, together with other measures to develop green spaces within the historical urban context, is significant.

c. Choice of materials, level of technology

The restoration projects under review have largely made use of traditional materials and technology, with the judicious introduction of modern materials where needed. In some cases, therefore, steel lintels or ties have been introduced into load-bearing walls, or concrete has

been used to repair foundations, in consultation with those responsible for safeguarding historical buildings. This careful mix of the traditional and modern reflects the pragmatic approach adopted by the UDRC regeneration programme as a whole, whose objective is to make available usable and cost-effective space rather than undertaking meticulous restoration for its own sake. The partial assimilation of the modern construction vernacular might go some way to ensuring that the restoration process is, to a degree, replicable.

This selective mixing of old and new is echoed in the imaginative adaptation of traditional finishes to meet the needs of the current users. The widespread use of glazed tiles in the bathhouses, for example, provides an appropriately robust finish for modern needs, while the repair of traditional stone upstands around the courtyards of houses protects the walls from damp or damage while maintaining the historical integrity of the structure.

A consistent change made to the restored buildings has been the introduction of modern services, including electrical cabling and piped water. This has generally been carried out in a cost-effective but careful manner. In some restored houses, in order to avoid damage to decorated walls, electrical conduits have been laid under the floors, where sockets are also located. Provision has been made in several cases for water and sewage pipes to run in underground ducts under the courtyard paving. Elsewhere, water pipes have been surface-mounted in ancillary spaces, for ease of repair.

Commercial viability, and therefore longer-term sustainability, of the process of urban regeneration is the key to the approach adopted under the UDRC programme. In a context where most private property investment centres on outlying urban developments, the aim is to encourage the redevelopment of central neighbourhoods by promoting the reuse of key historical buildings. This has been made possible due to the significant differentials (up to five times the square metre-value in some cases) that currently exist in land and property prices between the central and outlying urban areas. In addition, the restoration work provides opportunities for employment and training of craftsmen in traditional construction skills, which will contribute to the local economy and thereby improve the livelihoods of those inhabiting these historical neighbourhoods.

Although both Isfahan and Yazd lie in zones of potential seismic activity, there are judged to be only limited risks from damaging earthquakes. Therefore, no specific measures have been taken to strengthen the buildings under review, in the belief that the standard of their original construction, together with the techniques employed during restoration, should mitigate against serious damage.

d. Ageing and maintenance

The fact that traditional homes need constant maintenance has been taken into account through the ongoing preparation by the UDRC of a restoration manual, which will not only provide guidelines for potential new owners of historical homes but will also enable residents of such homes to undertake appropriate maintenance.

e. Design features

Both the Vazir and Khan bathhouses demonstrate the extent to which appropriate furnishings can complement the restoration work. In the former, low-level chairs and tables, as well as floor-based desks, have been designed to meet the particular needs of the children, the current primary users of the building. Movable glazed screens provide flexibility in the separation of the spaces, while performing as a showcase for the display of the children's drawings. In the latter bathhouse, low chairs and tables are used along with simple traditional cushions to positive effect in both the restaurant and teahouse. Glass-fronted cabinets in several niches allow for the display of historical artefacts from the region.

In the restored buildings now used as offices, even apparently without special furnishings, the spaces seemed well adapted to their new use. By contrast, in the case of the Hosayniyeh Nazem ot-Tojar, the introduction (by the present users) of abstract patterns of modern glazed tiles on the floors and dado of the building seem inappropriate and detract from the effectiveness of the overall space.

VII. Users

a. Beneficiaries of the programme

The various historical buildings that have been restored are used by a wide variety of people, including children, teachers, office workers, tourists and both religious and art students. Some of the restored buildings, such as the Vazir Bathhouse in Isfahan, have become attractions in themselves, judging by the number of people who have recorded their comments in the visitors' book.

b. Users' and professionals' response

In a context where there is a high degree of awareness of the value of cultural heritage and where many professionals are attempting to reconcile the need for preservation with the needs of a fast-growing urban population, the UDRC programme as a whole has attracted general admiration from within the architectural profession in Iran. The acknowledgment of the importance of urban preservation springs in part from a systematic emphasis, as part of architectural training over the past two decades, on the built heritage of Iran. The fact that a number of parallel restoration projects are currently being undertaken privately by individual architects or entrepreneurs, both in Isfahan and reportedly elsewhere, bears witness to the viability of the approach that has been adopted.

One of the lessons learned by the UDRC from this programme, however, has been the reluctance of potential owners or tenants to invest in historical buildings prior to their restoration. It has only proved possible, it seems, to convince them of the physical and commercial viability of the buildings (as compared to new, purpose-built space) once the restoration has been completed.

The restored buildings seem to be generally well liked by the users who were interviewed. Comments ranged from those who welcomed the opportunity to have a distinctive working environment in houses converted to office space, to those who mentioned the relative comfort or cultural significance of the environment in which they worked. Young children attending

the centre in the Vazir Bathhouse in Isfahan said that they liked the space it gave them to learn and play and, significantly, also knew something about its original purpose from the drawings illustrating its history that were on display. Likewise, both local residents and visitors at the Khan Bathhouse in Yazd said that they enjoyed the environment that the teahouse and restaurant provide and appreciated the practical reuse of a significant historical building. In the case of Hosayniyeh Nazem ot-Tojar in Yazd, both teachers and students indicated that the converted building, despite some perceived technical shortcomings, provided them with both an exciting and practical space in which to develop their artistic skills.

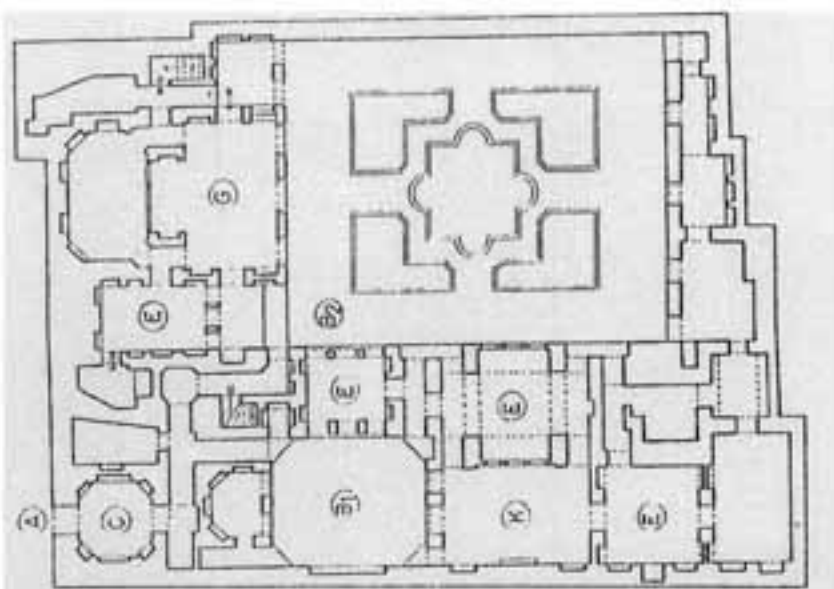
VIII. Persons Involved

Overall direction for the revitalization programme has been provided by Manoochehr Khajeh Dalouei, managing director and deputy minister for the Urban Development and Revitalization Corporation of the Ministry of Housing and Urban Development. The key driving force behind the programme of adaptive reuse continues to be Hamid Reza Sepehri, cultural advisor to the UDRC in Tehran, managing director, UDRC Tehran.

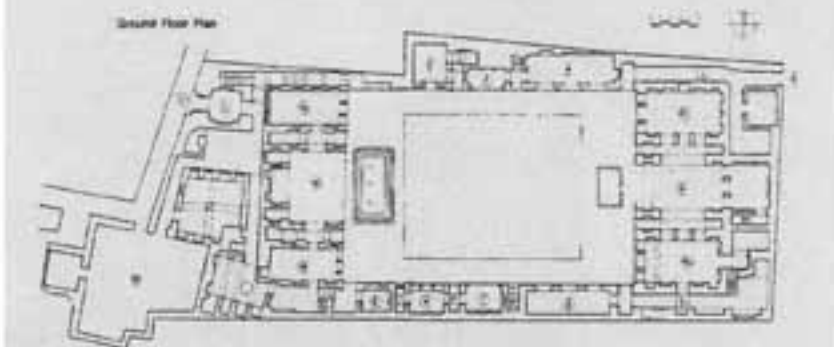
In Isfahan, Mohammed Kazemi, General Director of UDRC, provided overall direction for the work, while Hassan Ravanfar, currently managing director of UDRC, was project manager for all of the major restoration work. Mohammed Reza Khoshfekari was responsible for the architectural design for the Mojtahedzadeh and Qodsieh houses, while Hooshang Kianpour served as executive for these projects. Those principally involved in restoration of stucco decoration were Abbas Shokouhipoor, Hassan Riahi, Reza A'azami and Ali Poorshivan, while Akbar Jandaghian worked on mirror decorations. Work on paintings was carried out by Hooshang Rassam and Hassan Razavi. Restoration of timber decoration was undertaken by Ebrahim Abu Mas'oudi, Akbar Razzaz-zadeh and Said Alizadeh, while work on stone decoration was done by Abbas Sharif Zaare'.

In Yazd, the programme has been managed by Mr Alayi, managing director of the UDRC, with technical assistance from Mohsen Oliyeh, Mr Mandagarieh and Mohamed Reza Oliyeh. Craftsmen involved in the restoration work included Mr Kamalieh, Mr Parsiyan and Mr Yavarieh.

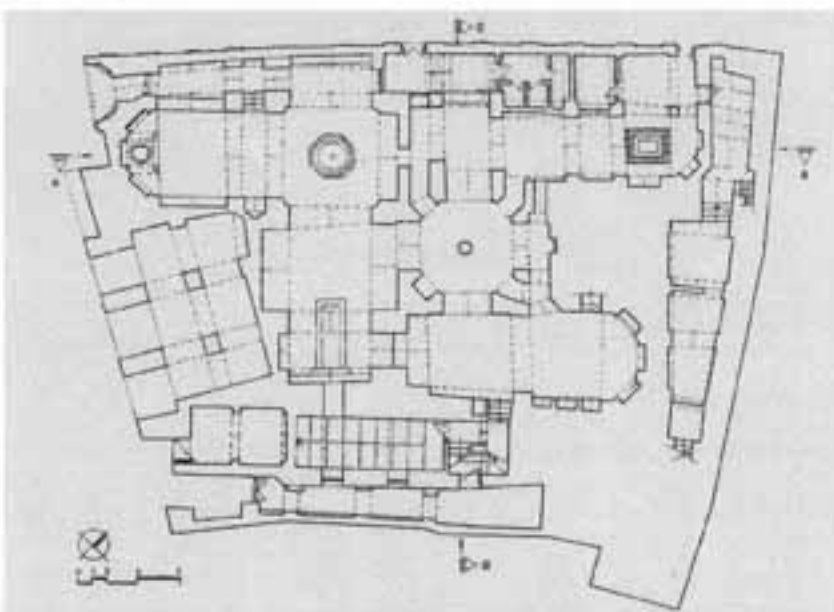
Jolyon Leslie
May 2001



MOJTAEHEDZADEH HOUSE



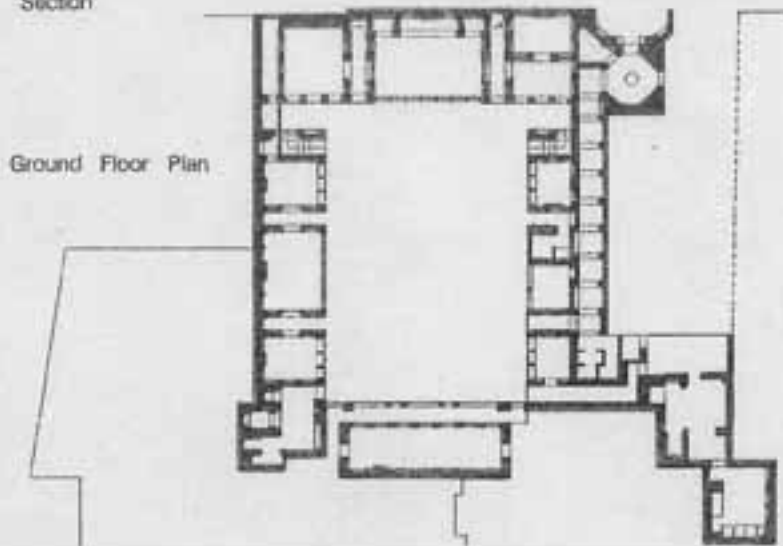
GHODSSIEH HOUSE



VAZIR HAMMAM

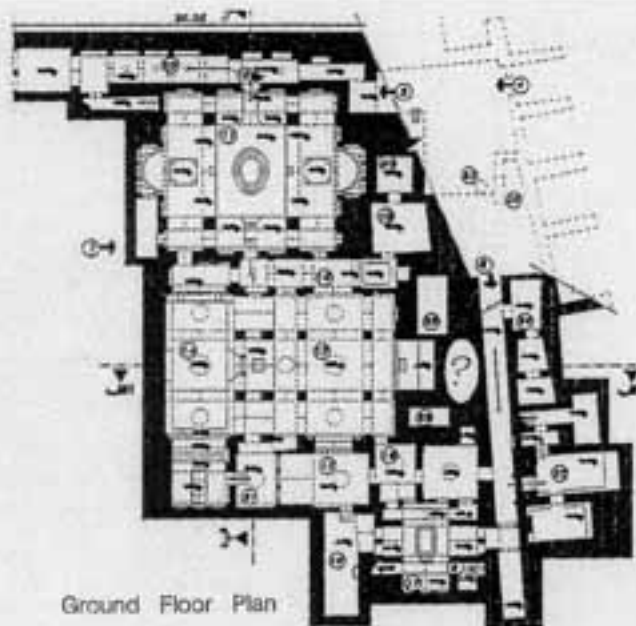


Section

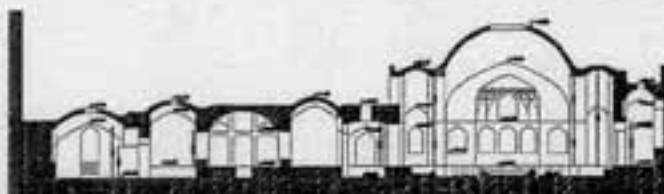


Ground Floor Plan

AALAM HOUSE



Ground Floor Plan



Section

KHAN HAMMAM COMPLEX



Above: The Ghodssieh House, in Isfahan, dates back to the seventeenth century and is currently used as a religious seminary.

Below: Stuccos and paintings at the Ghodssieh House.





Above: Mojtahezadeh House, dating from the late eighteenth century. The wind catchers, or "badgir" are an unusual feature in Isfahan.

Below: Painted decorations at the Mojtahezadeh House, now in use as a school.

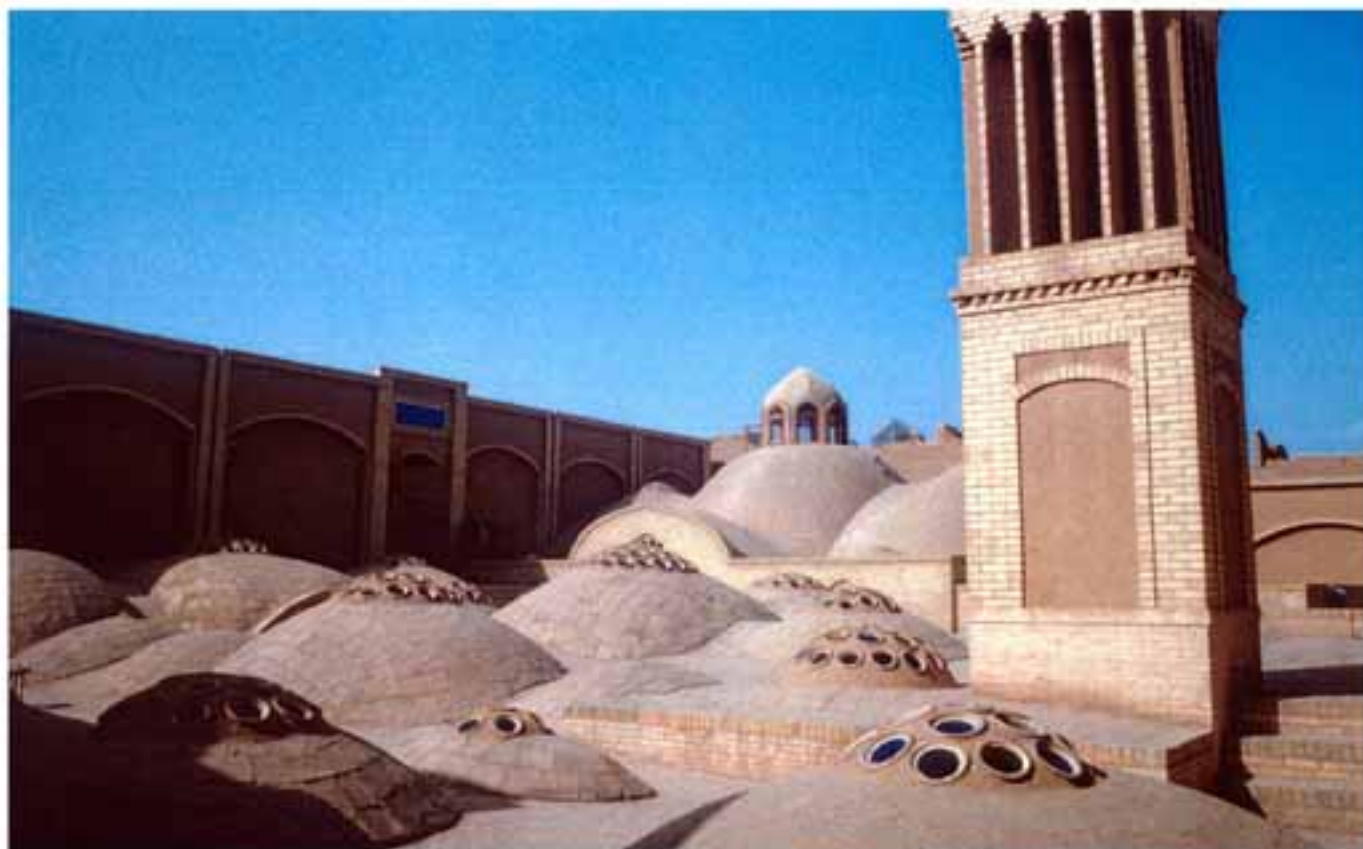




Above: Vazir Hammam, Isfahan, dates back to the early eighteenth century, and has been converted into a cultural centre.

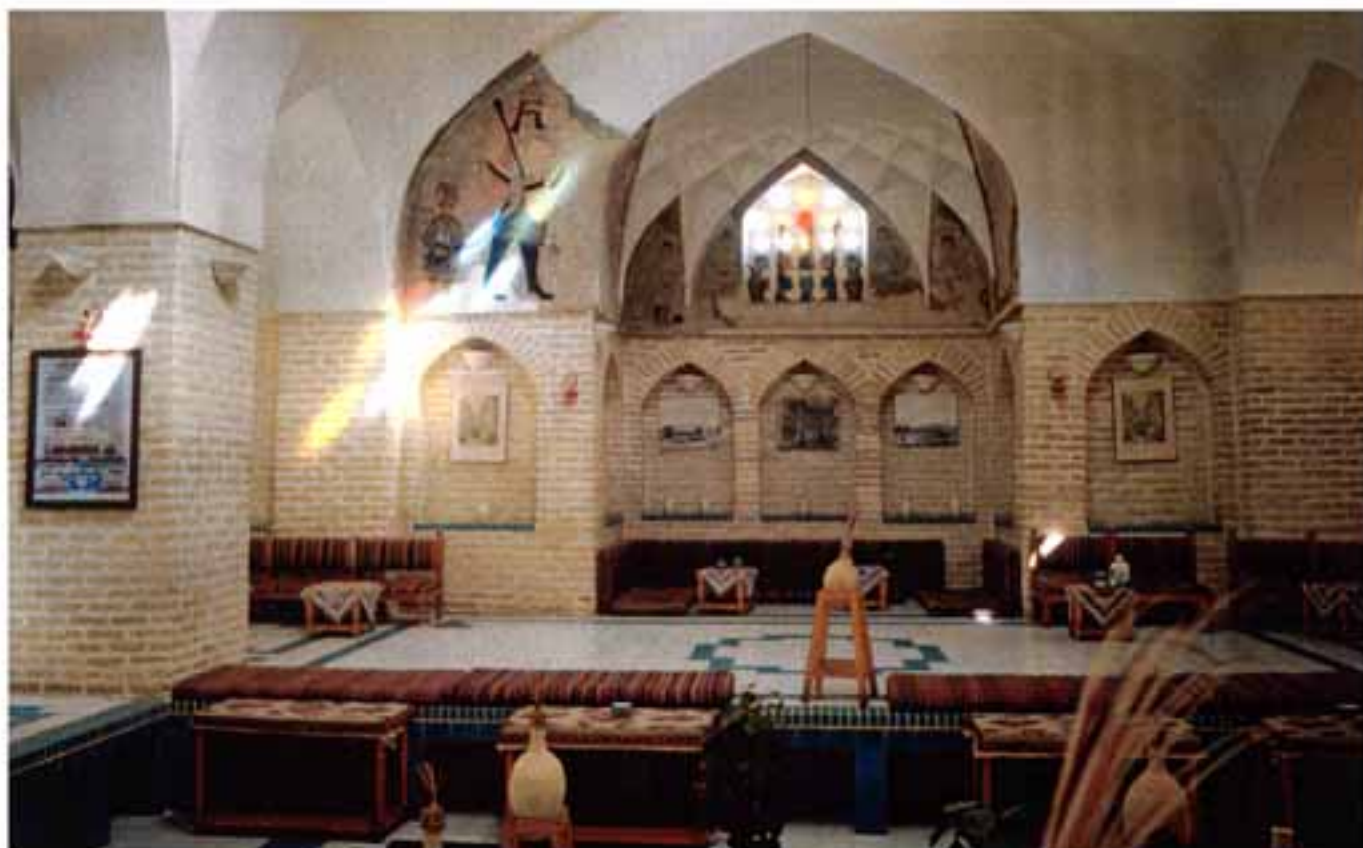
Below: Original dressing room or "bineh" in the Vazir Hammam, now being used as a library.





Above: The 1'170 m² Khan Hammam complex in Yazd has now been converted to a restaurant.

Below: Apart from some restored sections of painted plaster, the original brickwork has been left largely exposed in the Khan Hammam.





Above: Nazem-o-tojar Hosseiniyeh, in Yazd, has been recently transformed into a community arts centre.

Below: Original Qajar painted frieze and decorative panels have been retained on the plastered walls in Nazem-o-tojar Hosseiniyeh, Yazd.





Above: The 1'100 m² Aalam House, Isfahan, re-used as a guest house.

Below: Tainted glass windows at the Aalam House, dating back to the late eighteenth century.



New Life for Old Structures

Various locations, Iran

Architects Urban Development & Tehran, Iran

Clients

Commission

Design

Construction 1990 - 2000

Occupancy 1995 - 2000

Site

Ground Floor

Total Floor

Cost

Land

Rate

Global

Rate

Currency Iranian Rials

Programme The project involves the restoration and adaptive re-use of historic residences for public use with the aim to promote restoration as an economic means of urban renewal and revitalisation while preserving cultural identity.

Building Type 073
2001 Award Cycle 2578 IRA

New Life-Old Structure

Many renowned scholars have introduced to the world the vast treasure of Iranian art and architecture, producing exhaustive surveys on these topics. Yet, there are still diverse architectural masterpieces spread all over the country other than these major ones on large scales, cradling precious works of art which range from elaborate stucco, friezes, tile-works, reticulated colored-glass windows and paintings to the powerful geometry of the spaces themselves that evidence the master-builders' vision, innovation and technique.

The diversity observed in these patterns of the Iranian house can mostly be regarded as the direct outcome of the distinct geographical and climatical conditions, leading to the various morphologies seen in different parts of Iran. The wooden houses of the North with slanted roofs, the clay houses of central Iran with domed ones and the stone houses of the west and south topped by flat roofs.

A part from climatical conditions, the varied sub-cultures of Iran render splendid opportunities for master-builders to perform their spellbinding variations on the theme of the earthly paradise;

a concept that has its roots deep in Iranian culture and the main idea behind the design of all Iranian houses.

Due to the innumerable parameters such as modern urban planning, new building technologies and the evolution of life-style etc., many of these residences have been pulled down, while many others stand deserted and half-ruined, heedless of the role they may enact in urban life today. Although many of these buildings are not suitable for contemporary life, the versatility of the spaces makes them easily adaptable for new, modern uses. Alongside this, their aesthetic qualities contribute to the Iranian aura surrounding the spaces, thereby enriching them. Focusing on these potentials, the Urban Development and Revitalization Corporation (U.D.R.C.) has identified and restored, or rather, reincarnated many valuable buildings all over Iran for public uses.

Through these efforts, the U.D.R.C. encourages restoration as an economic way of urban revitalization and as a mean of preserving the cultural identity of the urban environment in the mist of its rapid development.

The U.D.R.C. believes that such steps will, in due time, reveal the importance of restoration to the public, promoting it as part of urban culture.

The public attention received by the U.D.R.C. restoration projects shows bright prospects for the future. The following illustrated identification album is a collection of these projects in different parts of Iran.



The Qadaki, Behnam, Houses Architectural School

In order to establish the "Architecture and Arts" faculties, the *Sahand Industrial University* has taken possession of 4 residential buildings in the very old urban fabric of Tabriz. These buildings of high cultural values are 100 to 200 years old and are registered by the Cultural Heritage Organization of Iran. In addition to the four buildings, there is a building complex in the eastern part of the *Behnam* house which is named the *Sadeghi* complex. It has developed in two different periods. The cellars have been built in the *Qajar* period. The ground floor has been renovated. There are four houses and one garden in this part of the complex. Its total area is 7000 m² and its built area is more than 5000 m².

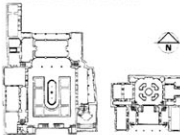
It is a two-storey building but in some sections it is three-storeys high. The most beautiful central building of the complex is built by a combination of middle *Qajar* construction styles. Its total area is 3000 m² and the built area is about 5000 m². It is two and in some sections three-storeys high.

• The first house which is named *Qadaki*, belongs to the middle of the *Qajar* period and is 150 years old. Its total area is 863 m² and its built area is 1340 m². It is house two-storeys high.

• The second house which is named *Ganjgah* belongs to the end of the *Qajar* and early of the *Pahlavi* period. It is three-storeys high.

• The third house also named *Ganjgah* belongs to the *Qajar* period. At present the only remaining part of this building is the main or central part of it. It is three-storeys high.

• The fourth building named *Behnam* is the oldest one and belongs to the end of the *Zand* period. Its total area is 840 m² & its built area is 1900 m².



The Tabib House Centre for Boushehr Studies

The *Tabib House* with Boushehr's vernacular architecture belongs to the *Qajar* period. Its total area is 595 m² and its built area 1100 m².

The main architectural elements of notice include the octagonal vestibule, central court-yard, three and five doored rooms, passage, lavatories and circulation spaces. Its most important building materials are fossiliferous stones (marble), plaster (mortar), timbers, straw mat, mud straw mixture and wooden doors and windows.

The function of the building has changed from residential to a research centre for Boushehr studies.

Location: Boushehr

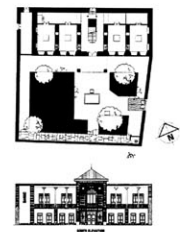


The Tofiqi House Martyr Museum

Tofiqi House with Zanjan's vernacular architecture belongs to the end of the *Qajar* period. Its total area is 566 m² and its built area is 371 m².

The main architectural elements of this two-storey house include adobe walls and wooden beamed ceilings. The courtyard facade is of brick work and in the southern part, there is a very decorative brickwork veranda which can be considered the most beautiful part of building. At present, it is functioning as a memorial museum of martyrs.

Location: Zanjan



The Vazir Bath Institute for the Intellectual Development of Children, Young Adults

It is one of the elements of a large complex with same name. The other elements of this complex are the *Vazir small Bazaar*, the *Vazir Caravanserai*, and the *Agaderam Mosque*. It belongs to the end of the *Safavid* period.

The total area of the *Vazir Bath* is 560 m² and its built area also is 560 m². By total repairing and renovating, its function has fully changed to Institute for the Intellectual Development of Children, Young Adults.

Location: Esfahan



The A'lam House Tourist Inn

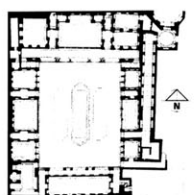
The *A'lam House* of the *Talle-Ashekan* neighborhood in Esfahan goes back to the *Qajar* period (19th century A.D.).

The built area of the house is 1118 m² and the court-yard 798 m².

The Urban Development and Revitalization Corporation bought the *A'lam House* in 1996. The main spaces consist of the entrance vestibule, the *hashi*, the main parlor with its reticulated colored-glass windows (*orossi*), the traditional dining-room, the basement and the wind-catchers. The materials used are adobe and mud, brick, timber and wood.

The previous function of the *A'lam House* was residential and it is to be turned into a tourist inn in the near future.

Location: Esfahan



The Moayed A'layi House Centre for Yazd Studies

The *Moayed A'layi House* goes back to the *Qajar* period is about 130 years old.

Its total area is 728 m² and its built area is 880 m².

The house has two courtyards, one in the *andarouni* (private quarter) and other in the *birouni* (guest quarters). The main architectural elements of the building include five-doored rooms, three-doored rooms, closet, kitchen, parlor, wind catchers, cellar and corridors.

The different kinds of isolation have been used in this house.

The first storey is made of brick, the second one of adobe.

Location: Yazd



The Qodsieh House Seminary

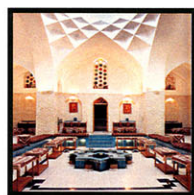
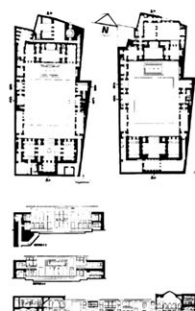
The *Qodsieh House* is one of the old houses of Esfahan. It goes back to the

Safavid period and has developed during periods of the *Zand*, *Qajar* and *Pahlavi* dynasties.

Its total area is 1492 m² and its built area is 1625 m².

The main architectural elements of notice include central rectangle-shaped courtyard, small octagonal vestibule, L-shaped passage, three leaves sash windows, main parlor, cellar, adjoining rooms, painted stucco and very beautiful *Qajari* mirror-worked central parlor, closet, kitchen and terrace.

Location: Esfahan



The Khan Bath Traditional Restaurant

The *Khan Bath* has been built in the early *Qajar* period in 1212 A.H.

The main architectural elements of the *Khan Bath* include the entrance portal, parlor, central dressing-room (for men and women separately), reservoir, bath furnace,

a bathing pool of 127 m².

The built area is 1170 m².

This Bath, repaired, renovated, is functioning as a tea-house for the tourists of Yazd.

Location: Yazd



The Mojtahezzadeh House Quranic School

This *Qajar* house (18th, 19th century) is situated in Esfahan's *Dalbety* neighborhood. Upon entering the octagonal vestibule, a second passage branches out of the first one and into the private courtyard of the *birouni* while the first one continues its

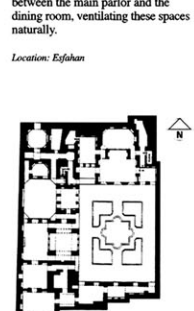
twisted way to the *andarouni*. Due to the relative smallness of the land, the house has been built on only three sides of it. The main parlor and the adjoining *iwari* are built next to the passage and vestibule in the north.

The dining room is situated at the back of the main parlor and is lit by the windows designed under its high ceiling.

A private courtyard surrounded on three sides lies in the west. In the middle of this section, a richly decorated room opens to the *birouni* on the opposite. The skilfully executed colored stucco and paintings reflect the *Qajar* passion for decorations.

Other architectural elements of notice include two wind-catchers which rise between the main parlor and the dining room, ventilating these spaces naturally.

Location: Esfahan



The Nilforoushan House Tourist Inn

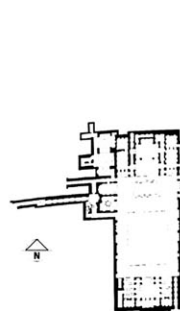
The *Nilforoushan House* with Esfahan's vernacular architecture belongs to the *Qajar* period. Its total area is 1725 m² and its built area is 965 m².


The main architectural elements of building include the octagonal vestibule, central courtyard, *andarouni* (family and private quarters) *birouni* (guest quarters), adjoining rooms.

It has rib vault and counter ceilings. Its main used building materials are brick, mud-brick and wood.

The previous function of the building was educational but now it is functioning as a tourist inn, now.

Location: Esfahan






Ministry of Housing & Urban Development & Reconstruction

Valuable Bldgs. in Old Urban Fabric: Form of Overall Descriptions


No. 4
Bldg. Code

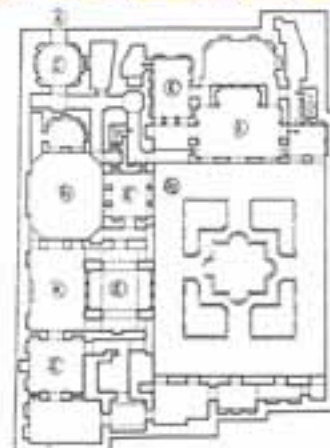
Province	City	Known As	Ownership				Land Use		Area		Further Information
			U.R.C	Municipality	Cultural Heritage Org.	Others	Private	Public	Total Area	Plot Area	
Isfahan	Isfahan	Mehrabadi	✓				House	Domestic	1400	1400	

Picture



Sketch Map





Ground Floor Plan



Ministry of Housing & Urban Development & Reconstruction

Valuable Bldgs. in Old Urban Fabric: Form of Overall Descriptions

No. 1
Bldg. Code


Province	City	Known As	Ownership				Land Use		Area		Further Information
			U.R.C	Municipality	Cultural Heritage Org.	Others	Private	Public	Total Area	Plot Area	
Isfahan	Isfahan	Kam - Yazdi	✓				House	Yazdi	600	140	

Picture



Sketch Map






Ministry of Housing & Urban Development & Reconstruction

Valuable Bldgs. in Old Urban Fabric: State of Restoration Form

No. 2
Bldg. Code


Period	Present State						Further Information
	Restoration Completed		Ongoing Restoration				
	Conservation	Reproduction	Conservation Plan	Rehabilitation Plan	Restoration Plan	Conservation Regulations	
Current	✓						Completed

Picture



Section

Ground Floor Plan





Valuable Bldgs. in Old Urban Fabric: Form of Overall Descriptions

Fig. 2:
Bldg Code

Province	City	Known As	Owner ship			LandUse		Area		Further Information
			ICP/C	Municipality	Cultural Heritage Org.	Others	Present	Potential	Total Area	
Isfahan	Isfahan	Behnamkhan - Behnamkhan	✓				House	Garage	1120	120

Picture



Sketch Map



Province	City	Known As	Ownership				Land Use		Area		Further Information
			U.O.R.C.	Municipality	Cultural Heritage Org.	Others	Permits	Present	Total Area	Built Area	
Isfahan	Isfahan	Qasbi School			✓		School	Teachers	1111.0	103.7	

Picture



Sketch Map





Ministry of Housing &
Urban Development
The Urban Development &
Revitalization Corporation

Valuable Bldgs. in Old Urban Fabrics, State of Restoration Form

No. 2
Bldg. Code

Period	Present State							Further Information
	Restoration Completed		Undergoing Restoration					
	Consolidation	Reproduction	Conservation Plan	Rehabilitation Plan	Restoration Plan	Compiling Regulations	Documentation	
Qajar		✓						Completed

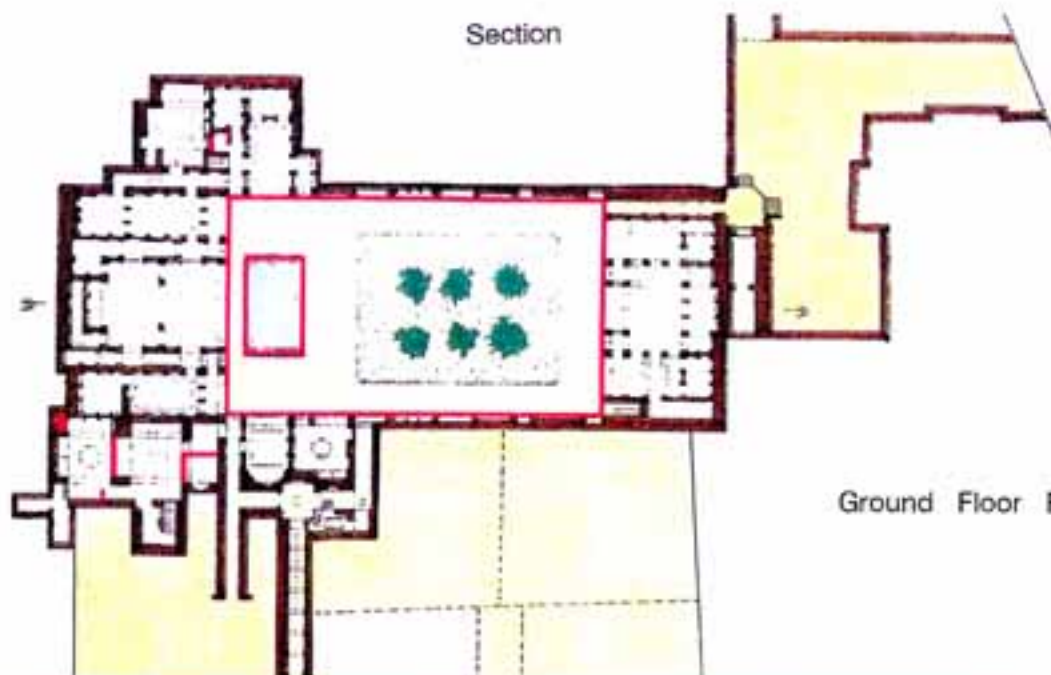
Picture



Section



Section



Ground Floor Plan



Ministry of Housing &
Urban Development

The Urban Development &
Revitalization Corporation

Valuable Bldgs. in Old Urban Fabrics; State of Restoration Form

No 5

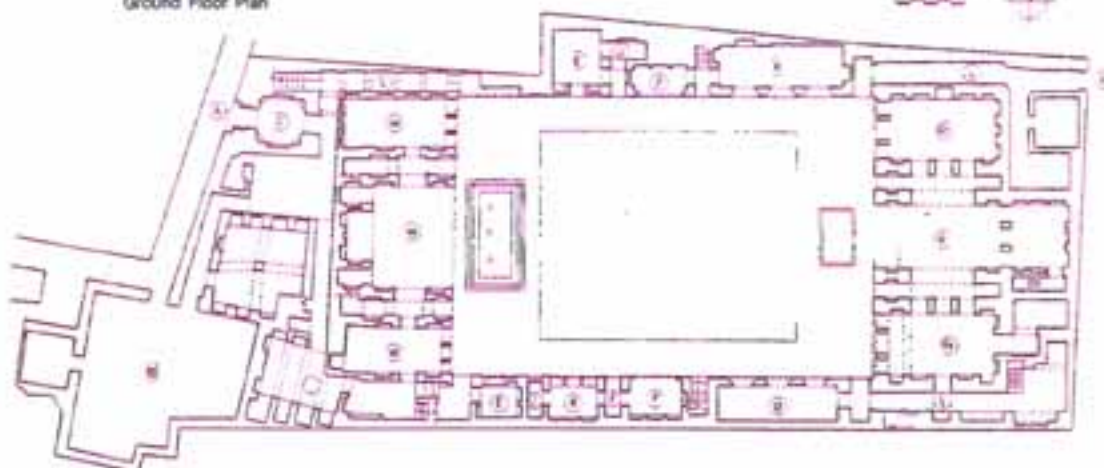
Bldg. Code

Period	Present State							Further Information
	Restoration Completed		Undergoing Restoration					
	Consolidation	Reproduction	Conservation Plan	Rehabilitation Plan	Restoration Plan	Compiling Regulations	Documentation	
Safavid		✓						Completed

Picture



Ground Floor Plan



Valuable Bldgs. in Old Urban Fabric: Form of Overall Descriptions

No. 6
Bldg Code

Province	City	Known As	Ownership			Land Use		Area		Further Information
			Public	Municipal	Private	Residential	Commercial	Total Area	Plot Area	
Mazandaran	Mazandaran	Yusef Bath	✓			Bath		122.0	122.0	

Picture



Sketch Map



Picture



After Renovation (Plan)

Valuable Bldgs. in Old Urban Fabric: Form of Overall Descriptions

No. 7
Bldg Code

Province	City	Known As	Ownership			Land Use		Area		Further Information
			Public	Municipal	Private	Residential	Commercial	Total Area	Plot Area	
Isfahan	Isfahan	Taher	✓			House		1170	1170	

Picture



Sketch Map



Valuable Bldgs. in Old Urban Fabric: State of Restoration Form

No. 8
Bldg Code

Period	Present State							Further Information
	Undergoing Restoration							
	Qualitative	Quantitative	Comprehensive Plan	Technical Plan	Financial Plan	Company Regulations	Environmental	
On/Off		✓						Completed

Picture



Section

Section



Ground Floor Plan



First Floor Plan

Province	City	Known As	Ownership				Land Use		Area		Further Information
			UDRC	Municipality	Cultural Heritage Org.	Others	Planned	Present	Total Area	Built Area	
Yazd	Yazd	Mosque Alast	✓				Historic	Mosque Sacred Site	120	200	

Picture



Sketch Map





Ministry of Housing &
Urban Development
The Urban Development &
Revitalization Corporation

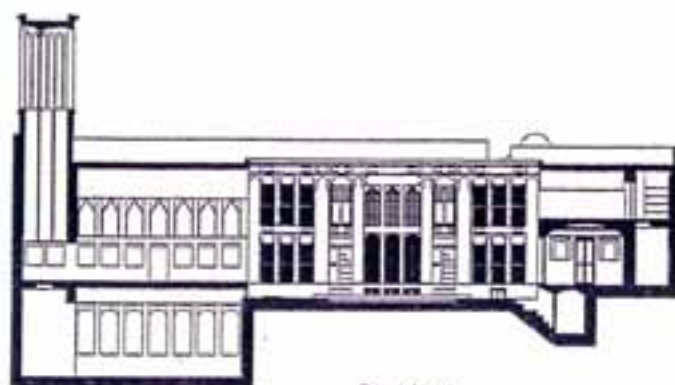
Valuable Bldgs. in Old Urban Fabrics: State of Restoration Form

No 10

Bldg. Code

Period	Present State							Further Information
	Restoration Completed		Undergoing Restoration					
	Consolidation	Reproduction	Conservation Plan	Rehabilitation Plan	Restoration Plan	Compiling Regulations	Documentation	
Qajar		✓						Completed

Picture



Section

Province	City	Known As	Ownership			Land Use		Area		Further Information
			UBRC	Municipality	Cultural Heritage Org.	Private	Public	Plot Area	Built Area	
Isfahan	Isfahan	Khan Sah	✓			Public	Private	1140	1140	

Picture



Sketch Map





Ministry of Housing &
Urban Development

The Urban Development &
Revitalization Corporation

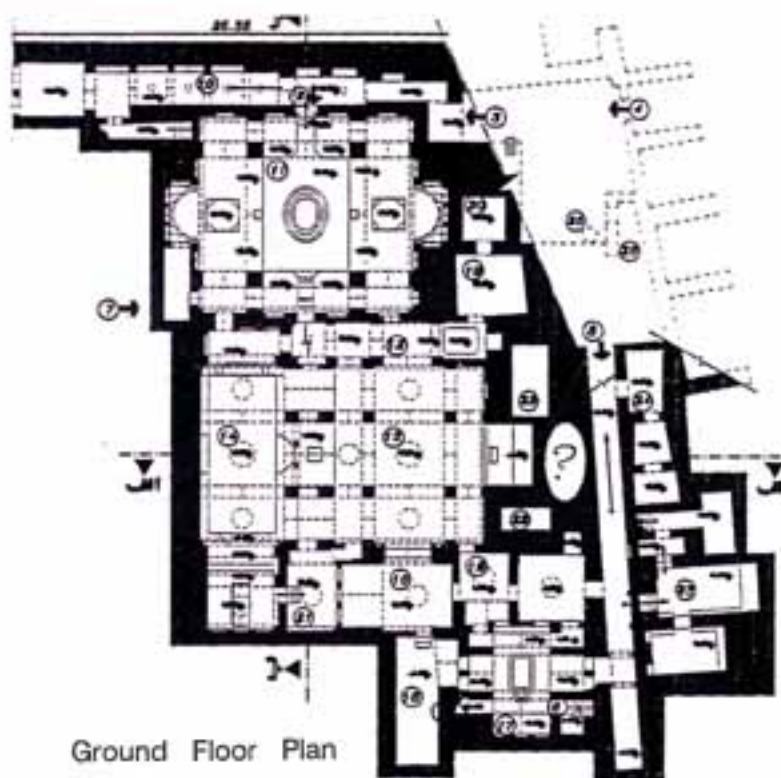
Valuable Bldgs. in Old Urban Fabrics, State of Restoration Form

No 9

Bldg. Code

Period	Present State							Further Information
	Restoration Completed		Undergoing Restoration					
	Consolidation	Reproduction	Conservation Plan	Rehabilitation Plan	Restoration Plan	Compiling Regulations	Documentation	
Qajar		✓						Completed

Picture



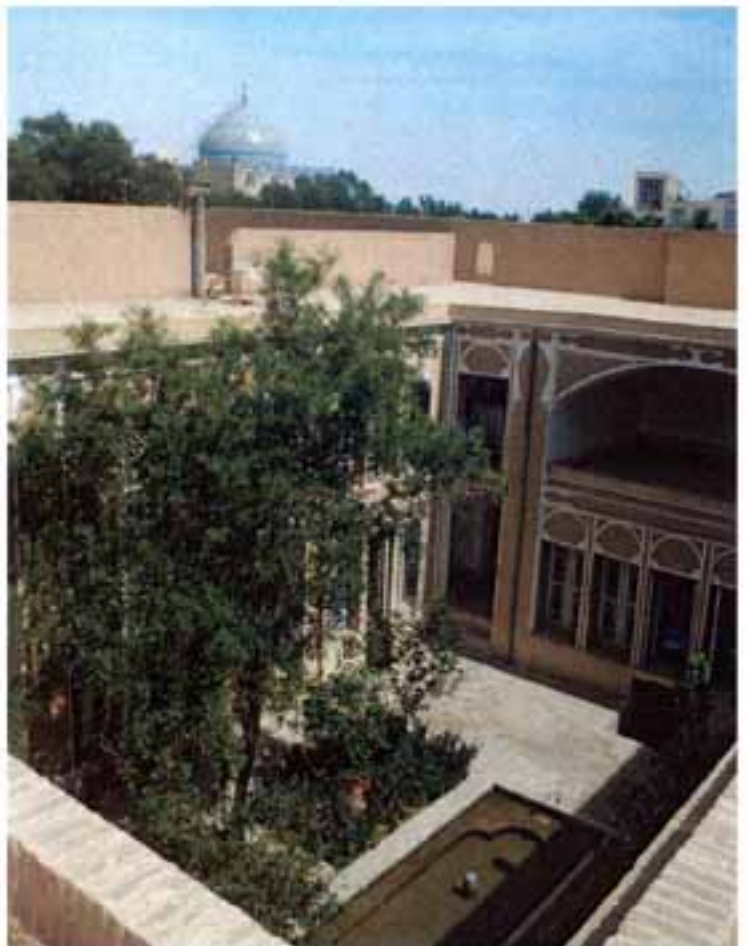
Ground Floor Plan



Section



New Life for Old Structures, Various locations, Iran



New Life for Old Structures

Various locations, Iran



Acc No: S109736
 VM Title: Khaneh-e-Mahmoodi
 Date: 28.07.1996
 Photographer: FITZHUGH Justin
 Copyright: Y
 Technical Infos:
 Notes:
 Location:
 VM Link: 2578 New Life for Old Structures



Acc No: S110110
 VM Title: Khaneh-e-Mahmoodi
 Date: 02.08.1996
 Photographer: FITZHUGH Justin
 Copyright: Y
 Technical Infos:
 Notes:
 Location:
 VM Link: 2578 New Life for Old Structures



Acc No: S110114
 VM Title: Khan-e-Mahmoodi
 Date: 02.08.1996
 Photographer: BRADLEY Tim
 Copyright: Y
 Technical Infos:
 Notes:
 Location:
 VM Link: 2578 New Life for Old Structures



Acc No: S216602
 VM Title: Vazir Hammam, Isfahan
 Date: 01.05.2001
 Photographer: ADLE Kamran
 Copyright: Y
 Technical Infos:
 Notes:
 Location:
 VM Link: 2578 New Life for Old Structures



Acc No: S216603
 VM Title: Vazir Hammam, Isfahan
 Date: 01.05.2001
 Photographer: ADLE Kamran
 Copyright: Y
 Technical Infos:
 Notes:
 Location:
 VM Link: 2578 New Life for Old Structures



Acc No: S216604
 VM Title: Vazir Hammam, Isfahan
 Date: 01.05.2001
 Photographer: ADLE Kamran
 Copyright: Y
 Technical Infos:
 Notes:
 Location:
 VM Link: 2578 New Life for Old Structures

New Life for Old Structures

Various locations, Iran



Acc No: S216605
VM Title: Vazir Hammam, Isfahan
Date: 01.05.2001
Photographer: ADLE Kamran
Copyright: Y
Technical Infos:
Notes:
Location:
VM Link: 2578 New Life for Old Structures



Acc No: S216606
VM Title: Vazir Hammam, Isfahan
Date: 01.05.2001
Photographer: ADLE Kamran
Copyright: Y
Technical Infos:
Notes:
Location:
VM Link: 2578 New Life for Old Structures



Acc No: S216607
VM Title: Vazir Hammam, Isfahan
Date: 01.05.2001
Photographer: ADLE Kamran
Copyright: Y
Technical Infos:
Notes:
Location:
VM Link: 2578 New Life for Old Structures



Acc No: S216608
VM Title: Vazir Hammam, Isfahan
Date: 01.05.2001
Photographer: ADLE Kamran
Copyright: Y
Technical Infos:
Notes:
Location:
VM Link: 2578 New Life for Old Structures



Acc No: S216609
VM Title: Vazir Hammam, Isfahan
Date: 01.05.2001
Photographer: ADLE Kamran
Copyright: Y
Technical Infos:
Notes:
Location:
VM Link: 2578 New Life for Old Structures



Acc No: S216610
VM Title: Vazir Hammam, Isfahan
Date: 01.05.2001
Photographer: ADLE Kamran
Copyright: Y
Technical Infos:
Notes:
Location:
VM Link: 2578 New Life for Old Structures

New Life for Old Structures

Various locations, Iran



Acc No: S216611
VM Title: Vazir Hammam, Isfahan
Date: 01.05.2001
Photographer: ADLE Kamran
Copyright: Y
Technical Infos:
Notes:
Location:
VM Link: 2578 New Life for Old Structures



Acc No: S216612
VM Title: Vazir Hammam, Isfahan
Date: 01.05.2001
Photographer: ADLE Kamran
Copyright: Y
Technical Infos:
Notes:
Location:
VM Link: 2578 New Life for Old Structures



Acc No: S216613
VM Title: Vazir Hammam, Isfahan
Date: 01.05.2001
Photographer: ADLE Kamran
Copyright: Y
Technical Infos:
Notes:
Location:
VM Link: 2578 New Life for Old Structures



Acc No: S216614
VM Title: Vazir Hammam, Isfahan
Date: 01.05.2001
Photographer: ADLE Kamran
Copyright: Y
Technical Infos:
Notes:
Location:
VM Link: 2578 New Life for Old Structures



Acc No: S216615
VM Title: Vazir Hammam, Isfahan
Date: 01.05.2001
Photographer: ADLE Kamran
Copyright: Y
Technical Infos:
Notes:
Location:
VM Link: 2578 New Life for Old Structures



Acc No: S216616
VM Title: Vazir Hammam, Isfahan
Date: 01.05.2001
Photographer: ADLE Kamran
Copyright: Y
Technical Infos:
Notes:
Location:
VM Link: 2578 New Life for Old Structures

New Life for Old Structures

Various locations, Iran



Acc No: S216617
VM Title: Vazir Hammam, Isfahan
Date: 01.05.2001
Photographer: ADLE Kamran
Copyright: Y
Technical Infos:
Notes:
Location:
VM Link: 2578 New Life for Old Structures



Acc No: S216618
VM Title: Vazir Hammam, Isfahan
Date: 01.05.2001
Photographer: ADLE Kamran
Copyright: Y
Technical Infos:
Notes:
Location:
VM Link: 2578 New Life for Old Structures



Acc No: S216619
VM Title: Vazir Hammam, Isfahan
Date: 01.05.2001
Photographer: ADLE Kamran
Copyright: Y
Technical Infos:
Notes:
Location:
VM Link: 2578 New Life for Old Structures



Acc No: S216620
VM Title: Vazir Hammam, Isfahan
Date: 01.05.2001
Photographer: ADLE Kamran
Copyright: Y
Technical Infos:
Notes:
Location:
VM Link: 2578 New Life for Old Structures



Acc No: S216621
VM Title: Vazir Hammam, Isfahan
Date: 01.05.2001
Photographer: ADLE Kamran
Copyright: Y
Technical Infos:
Notes:
Location:
VM Link: 2578 New Life for Old Structures



Acc No: S216622
VM Title: Vazir Hammam, Isfahan
Date: 01.05.2001
Photographer: ADLE Kamran
Copyright: Y
Technical Infos:
Notes:
Location:
VM Link: 2578 New Life for Old Structures

New Life for Old Structures

Various locations, Iran



Acc No: S216623
VM Title: Vazir Hammam, Isfahan
Date: 01.05.2001
Photographer: ADLE Kamran
Copyright: Y
Technical Infos:
Notes:
Location:
VM Link: 2578 New Life for Old Structures



Acc No: S216624
VM Title: Vazir Hammam, Isfahan
Date: 01.05.2001
Photographer: ADLE Kamran
Copyright: Y
Technical Infos:
Notes:
Location:
VM Link: 2578 New Life for Old Structures



Acc No: S216625
VM Title: Vazir Hammam, Isfahan
Date: 01.05.2001
Photographer: ADLE Kamran
Copyright: Y
Technical Infos:
Notes:
Location:
VM Link: 2578 New Life for Old Structures



Acc No: S216626
VM Title: Vazir Hammam, Isfahan
Date: 01.05.2001
Photographer: ADLE Kamran
Copyright: Y
Technical Infos:
Notes:
Location:
VM Link: 2578 New Life for Old Structures



Acc No: S216627
VM Title: Vazir Hammam, Isfahan
Date: 01.05.2001
Photographer: ADLE Kamran
Copyright: Y
Technical Infos:
Notes:
Location:
VM Link: 2578 New Life for Old Structures



Acc No: S216628
VM Title: Vazir Hammam, Isfahan
Date: 01.05.2001
Photographer: ADLE Kamran
Copyright: Y
Technical Infos:
Notes:
Location:
VM Link: 2578 New Life for Old Structures

New Life for Old Structures

Various locations, Iran



Acc No: S216629
VM Title: Vazir Hammam, Isfahan
Date: 01.05.2001
Photographer: ADLE Kamran
Copyright: Y
Technical Infos:
Notes:
Location:
VM Link: [2578 New Life for Old Structures](#)



Acc No: S216630
VM Title: Vazir Hammam, Isfahan
Date: 01.05.2001
Photographer: ADLE Kamran
Copyright: Y
Technical Infos:
Notes:
Location:
VM Link: [2578 New Life for Old Structures](#)



Acc No: S216631
VM Title: Vazir Hammam, Isfahan
Date: 01.05.2001
Photographer: ADLE Kamran
Copyright: Y
Technical Infos:
Notes:
Location:
VM Link: [2578 New Life for Old Structures](#)

New Life for Old Structures

Various locations, Iran

List of Visual Materials

No	VM Num	CD Id	IMG Ord	VM Title	Date	Photographer	Format	Copyright
1	D004731			Khan Hamam, Yazd, area plan		COURTESY OF	A4	Y
2	D004732			Khan Hamam, Yazd, floor plan, section		COURTESY OF	A4	Y
3	D004733			Nazam-o-toja Hosseinieh, Yazd, area plan		COURTESY OF	A4	Y
4	D004734			Nazam-o-toja Hosseinieh, Yazd, flr plan		COURTESY OF	A4	Y
5	D004735			Nilforooshan House, Isfahan, area plan		COURTESY OF	A4	Y
6	D004736			Nilforooshan House, Isfahan, site plan		COURTESY OF	A4	Y
7	D004737			Nilforooshan House, Isfahan, flr plan		COURTESY OF	A4	Y
8	D004738			Ghodssieh School, floor plan, facade		COURTESY OF	A4	Y
9	D004739			Ghodssieh School, location plan		COURTESY OF	A4	Y
10	D004740			Vazir Hammam, Isfahan, location plan		COURTESY OF	A4	Y
11	D004741			Vazir Hammam, Isfahan, flr plan, facade		COURTESY OF	A4	Y
12	D004742			Vazir Hammam, Isfahan, flr plan, facade		COURTESY OF	A4	Y
13	D004743			Vazir Hammam, Isfahan, location plan		COURTESY OF	A4	Y
14	D004744			Mojtahedzadeh Hse, Isfahan, location pl.		COURTESY OF	A4	Y
15	D004745			Mojtahedzadeh Hse, Isfahan, floor plan		COURTESY OF	A4	Y
16	R010130			Khan Hamam, Yazd, restoration work		COURTESY OF	10x15	Y
17	R010131			Khan Hamam, Yazd, restoration work		COURTESY OF	10x15	Y
18	R010132			Khan Hamam, Yazd, restoration work		COURTESY OF	10x15	Y
19	R010133			Khan Hamam, Yazd, restoration work		COURTESY OF	10x15	Y
20	R010134			Nilforooshan Hse, Isfahan, restor. work		COURTESY OF	9x13	Y
21	R010135			Nilforooshan Hse, Isfahan, restor. work		COURTESY OF	9x13	Y
22	R010136			Nilforooshan Hse, Isfahan, restor. work		COURTESY OF	9x13	Y
23	R010137			Nilforooshan Hse, Isfahan, restor. work		COURTESY OF	9x13	Y
24	R010138			Adam House, Isfahan, pre-restoration		COURTESY OF	9x13	Y
25	R010139			Adam House, Isfahan, pre-restoration		COURTESY OF	9x13	Y
26	R010140			Adam House, Isfahan, pre-restoration		COURTESY OF	9x13	Y
27	R010141			Adam House, Isfahan, pre-restoration		COURTESY OF	9x13	Y
28	R010142			Adam House, Isfahan, pre-restoration		COURTESY OF	9x13	Y
29	R010143			Adam House, Isfahan, pre-restoration		COURTESY OF	9x13	Y
30	R010144			Adam House, Isfahan, pre-restoration		COURTESY OF	9x13	Y
31	R010145			Adam House, Isfahan, pre-restoration		COURTESY OF	9x13	Y
32	R010146			Adam House, Isfahan, pre-restoration		COURTESY OF	12x12	Y
33	R010147			Adam House, Isfahan, pre-restoration		COURTESY OF	12x12	Y
34	R010148			Adam House, Isfahan, pre-restoration		COURTESY OF	12x18	Y
35	R010149			Ghodssieh School, Isfahan, pre-restorat.		COURTESY OF	9x13	Y
36	R010150			Ghodssieh School, Isfahan, pre-restorat.		COURTESY OF	9x13	Y
37	R010151			Ghodssieh School, Isfahan, pre-restorat.		COURTESY OF	9x13	Y
38	R010152			Ghodssieh School, Isfahan, pre-restorat.		COURTESY OF	9x13	Y
39	R010153			Ghodssieh School, Isfahan, pre-restorat.		COURTESY OF	9x13	Y
40	R010154			Ghodssieh School, Isfahan, pre-restorat.		COURTESY OF	9x13	Y
41	R010155			Ghodssieh School, Isfahan, pre-restorat.		COURTESY OF	9x13	Y
42	R010156			Ghodssieh School, Isfahan, pre-restorat.		COURTESY OF	9x13	Y
43	R010157			Vazir Hammam, Isfahan, pre-restoration		COURTESY OF	9x13	Y
44	R010158			Vazir Hammam, Isfahan, pre-restoration		COURTESY OF	9x13	Y
45	R010159			Vazir Hammam, Isfahan, pre-restoration		COURTESY OF	9x13	Y
46	R010160			Vazir Hammam, Isfahan, pre-restoration		COURTESY OF	9x13	Y
47	R010161			Vazir Hammam, Isfahan, pre-restoration		COURTESY OF	9x13	Y
48	R010162			Vazir Hammam, Isfahan, pre-restoration		COURTESY OF	9x13	Y
49	R010163			Vazir Hammam, Isfahan, pre-restoration		COURTESY OF	9x13	Y
50	R010164			Vazir Hammam, Isfahan, pre-restoration		COURTESY OF	9x13	Y

New Life for Old Structures

Various locations, Iran

List of Visual Materials

No	VM Num	CD Id	IMG Ord	VM Title	Date	Photographer	Format	Copyright
51	R010165			Vazir Hammam, Isfahan, pre-restoration		COURTESY OF	9x13	Y
52	R010166			Mojtahedzedah Hse, Isfahan, pre-restor.		COURTESY OF	12x18	Y
53	R010167			Nilforooshan Hse, Isfahan, pre-restor.		COURTESY OF	12x12	Y
54	S109736	CT25294	IMG0003	Khaneh-e-Mahmoodi	28.07.1996	FITZHUGH Justin	24x36	Y
55	S110110	CT25294	IMG0001	Khaneh-e-Mahmoodi	02.08.1996	FITZHUGH Justin	24x36	Y
56	S110114	CT25294	IMG0002	Khan-e-Mahmoodi	02.08.1996	BRADLEY Tim	24x36	Y
57	S216028			Khan Hamam, Yazd	01.05.2001	ADLE Kamran	24x36	Y
58	S216029			Khan Hamam, Yazd	01.05.2001	ADLE Kamran	24x36	Y
59	S216030			Khan Hamam, Yazd	01.05.2001	ADLE Kamran	24x36	Y
60	S216031			Khan Hamam, Yazd	01.05.2001	ADLE Kamran	24x36	Y
61	S216032			Khan Hamam, Yazd	01.05.2001	ADLE Kamran	24x36	Y
62	S216033			Khan Hamam, Yazd	01.05.2001	ADLE Kamran	24x36	Y
63	S216034			Khan Hamam, Yazd	01.05.2001	ADLE Kamran	24x36	Y
64	S216035			Khan Hamam, Yazd	01.05.2001	ADLE Kamran	24x36	Y
65	S216036			Khan Hamam, Yazd	01.05.2001	ADLE Kamran	24x36	Y
66	S216037			Khan Hamam, Yazd	01.05.2001	ADLE Kamran	24x36	Y
67	S216038			Khan Hamam, Yazd	01.05.2001	ADLE Kamran	24x36	Y
68	S216039			Khan Hamam, Yazd	01.05.2001	ADLE Kamran	24x36	Y
69	S216040			Khan Hamam, Yazd	01.05.2001	ADLE Kamran	24x36	Y
70	S216041			Khan Hamam, Yazd	01.05.2001	ADLE Kamran	24x36	Y
71	S216042			Khan Hamam, Yazd	01.05.2001	ADLE Kamran	24x36	Y
72	S216043			Khan Hamam, Yazd	01.05.2001	ADLE Kamran	24x36	Y
73	S216044			Khan Hamam, Yazd	01.05.2001	ADLE Kamran	24x36	Y
74	S216045			Khan Hamam, Yazd	01.05.2001	ADLE Kamran	24x36	Y
75	S216046			Khan Hamam, Yazd	01.05.2001	ADLE Kamran	24x36	Y
76	S216047			Khan Hamam, Yazd	01.05.2001	ADLE Kamran	24x36	Y
77	S216048			Khan Hamam, Yazd	01.05.2001	ADLE Kamran	24x36	Y
78	S216049			Khan Hamam, Yazd	01.05.2001	ADLE Kamran	24x36	Y
79	S216050			Khan Hamam, Yazd	01.05.2001	ADLE Kamran	24x36	Y
80	S216051			Khan Hamam, Yazd	01.05.2001	ADLE Kamran	24x36	Y
81	S216052			Khan Hamam, Yazd	01.05.2001	ADLE Kamran	24x36	Y
82	S216053			Khan Hamam, Yazd	01.05.2001	ADLE Kamran	24x36	Y
83	S216054			Khan Hamam, Yazd	01.05.2001	ADLE Kamran	24x36	Y
84	S216055			Khan Hamam, Yazd	01.05.2001	ADLE Kamran	24x36	Y
85	S216056			Khan Hamam, Yazd	01.05.2001	ADLE Kamran	24x36	Y
86	S216057			Khan Hamam, Yazd	01.05.2001	ADLE Kamran	24x36	Y
87	S216058			Khan Hamam, Yazd	01.05.2001	ADLE Kamran	24x36	Y
88	S216059			Khan Hamam, Yazd	01.05.2001	ADLE Kamran	24x36	Y
89	S216060			Khan Hamam, Yazd	01.05.2001	ADLE Kamran	24x36	Y
90	S216061			Khan Hamam, Yazd	01.05.2001	ADLE Kamran	24x36	Y
91	S216062			Khan Hamam, Yazd	01.05.2001	ADLE Kamran	24x36	Y
92	S216063			Khan Hamam, Yazd	01.05.2001	ADLE Kamran	24x36	Y
93	S216064			Khan Hamam, Yazd	01.05.2001	ADLE Kamran	24x36	Y
94	S216065			Khan Hamam, Yazd	01.05.2001	ADLE Kamran	24x36	Y
95	S216066			Khan Hamam, Yazd	01.05.2001	ADLE Kamran	24x36	Y
96	S216067			Khan Hamam, Yazd	01.05.2001	ADLE Kamran	24x36	Y
97	S216068			Khan Hamam, Yazd	01.05.2001	ADLE Kamran	24x36	Y
98	S216069			Khan Hamam, Yazd	01.05.2001	ADLE Kamran	24x36	Y
99	S216070			Khan Hamam, Yazd	01.05.2001	ADLE Kamran	24x36	Y
100	S216071			Khan Hamam, Yazd	01.05.2001	ADLE Kamran	24x36	Y

New Life for Old Structures

Various locations, Iran

List of Visual Materials

No	VM Num	CD Id	IMG Ord	VM Title	Date	Photographer	Format	Copyright
101	S216072			Khan Hamam, Yazd	01.05.2001	ADLE Kamran	24x36	Y
102	S216073			Khan Hamam, Yazd	01.05.2001	ADLE Kamran	24x36	Y
103	S216074			Khan Hamam, Yazd	01.05.2001	ADLE Kamran	24x36	Y
104	S216075			Khan Hamam, Yazd	01.05.2001	ADLE Kamran	24x36	Y
105	S216076			Khan Hamam, Yazd	01.05.2001	ADLE Kamran	24x36	Y
106	S216077			Khan Hamam, Yazd	01.05.2001	ADLE Kamran	24x36	Y
107	S216078			Khan Hamam, Yazd	01.05.2001	ADLE Kamran	24x36	Y
108	S216079			Khan Hamam, Yazd	01.05.2001	ADLE Kamran	24x36	Y
109	S216080			Khan Hamam, Yazd	01.05.2001	ADLE Kamran	24x36	Y
110	S216081			Khan Hamam, Yazd	01.05.2001	ADLE Kamran	24x36	Y
111	S216082			Khan Hamam, Yazd	01.05.2001	ADLE Kamran	24x36	Y
112	S216083			Khan Hamam, Yazd	01.05.2001	ADLE Kamran	24x36	Y
113	S216084			Khan Hamam, Yazd	01.05.2001	ADLE Kamran	24x36	Y
114	S216085			Khan Hamam, Yazd	01.05.2001	ADLE Kamran	24x36	Y
115	S216086			Khan Hamam, Yazd	01.05.2001	ADLE Kamran	24x36	Y
116	S216087			Khan Hamam, Yazd	01.05.2001	ADLE Kamran	24x36	Y
117	S216088			Khan Hamam, Yazd	01.05.2001	ADLE Kamran	24x36	Y
118	S216089			Khan Hamam, Yazd	01.05.2001	ADLE Kamran	24x36	Y
119	S216090			Khan Hamam, Yazd	01.05.2001	ADLE Kamran	24x36	Y
120	S216091			Khan Hamam, Yazd	01.05.2001	ADLE Kamran	24x36	Y
121	S216092			Khan Hamam, Yazd	01.05.2001	ADLE Kamran	24x36	Y
122	S216093			Khan Hamam, Yazd	01.05.2001	ADLE Kamran	24x36	Y
123	S216094			Khan Hamam, Yazd	01.05.2001	ADLE Kamran	24x36	Y
124	S216095			Khan Hamam, Yazd	01.05.2001	ADLE Kamran	24x36	Y
125	S216096			Khan Hamam, Yazd	01.05.2001	ADLE Kamran	24x36	Y
126	S216097			Khan Hamam, Yazd	01.05.2001	ADLE Kamran	24x36	Y
127	S216098			Khan Hamam, Yazd	01.05.2001	ADLE Kamran	24x36	Y
128	S216099			Khan Hamam, Yazd	01.05.2001	ADLE Kamran	24x36	Y
129	S216100			Khan Hamam, Yazd	01.05.2001	ADLE Kamran	24x36	Y
130	S216101			Khan Hamam, Yazd	01.05.2001	ADLE Kamran	24x36	Y
131	S216102			Khan Hamam, Yazd	01.05.2001	ADLE Kamran	24x36	Y
132	S216103			Khan Hamam, Yazd	01.05.2001	ADLE Kamran	24x36	Y
133	S216104			Khan Hamam, Yazd	01.05.2001	ADLE Kamran	24x36	Y
134	S216105			Khan Hamam, Yazd	01.05.2001	ADLE Kamran	24x36	Y
135	S216106			Khan Hamam, Yazd	01.05.2001	ADLE Kamran	24x36	Y
136	S216107			Khan Hamam, Yazd	01.05.2001	ADLE Kamran	24x36	Y
137	S216108			Khan Hamam, Yazd	01.05.2001	ADLE Kamran	24x36	Y
138	S216109			Khan Hamam, Yazd	01.05.2001	ADLE Kamran	24x36	Y
139	S216110			Khan Hamam, Yazd	01.05.2001	ADLE Kamran	24x36	Y
140	S216111			Khan Hamam, Yazd	01.05.2001	ADLE Kamran	24x36	Y
141	S216112			Khan Hamam, Yazd	01.05.2001	ADLE Kamran	24x36	Y
142	S216113			Khan Hamam, Yazd	01.05.2001	ADLE Kamran	24x36	Y
143	S216114			Khan Hamam, Yazd	01.05.2001	ADLE Kamran	24x36	Y
144	S216115			Khan Hamam, Yazd	01.05.2001	ADLE Kamran	24x36	Y
145	S216116			Khan Hamam, Yazd	01.05.2001	ADLE Kamran	24x36	Y
146	S216117			Khan Hamam, Yazd	01.05.2001	ADLE Kamran	24x36	Y
147	S216118			Khan Hamam, Yazd	01.05.2001	ADLE Kamran	24x36	Y
148	S216119			Khan Hamam, Yazd	01.05.2001	ADLE Kamran	24x36	Y
149	S216120			Khan Hamam, Yazd	01.05.2001	ADLE Kamran	24x36	Y
150	S216121			Khan Hamam, Yazd	01.05.2001	ADLE Kamran	24x36	Y

New Life for Old Structures

Various locations, Iran

List of Visual Materials

No	VM Num	CD Id	IMG Ord	VM Title	Date	Photographer	Format	Copyright
151	S216122			Khan Hamam, Yazd	01.05.2001	ADLE Kamran	24x36	Y
152	S216123			Khan Hamam, Yazd	01.05.2001	ADLE Kamran	24x36	Y
153	S216124			Khan Hamam, Yazd	01.05.2001	ADLE Kamran	24x36	Y
154	S216125			Khan Hamam, Yazd	01.05.2001	ADLE Kamran	24x36	Y
155	S216126			Khan Hamam, Yazd	01.05.2001	ADLE Kamran	24x36	Y
156	S216127			Khan Hamam, Yazd	01.05.2001	ADLE Kamran	24x36	Y
157	S216128			Khan Hamam, Yazd	01.05.2001	ADLE Kamran	24x36	Y
158	S216129			Khan Hamam, Yazd	01.05.2001	ADLE Kamran	24x36	Y
159	S216130			Khan Hamam, Yazd	01.05.2001	ADLE Kamran	24x36	Y
160	S216131			Khan Hamam, Yazd	01.05.2001	ADLE Kamran	24x36	Y
161	S216132			Khan Hamam, Yazd	01.05.2001	ADLE Kamran	24x36	Y
162	S216133			Khan Hamam, Yazd	01.05.2001	ADLE Kamran	24x36	Y
163	S216134			Khan Hamam, Yazd	01.05.2001	ADLE Kamran	24x36	Y
164	S216135			Khan Hamam, Yazd	01.05.2001	ADLE Kamran	24x36	Y
165	S216136			Khan Hamam, Yazd	01.05.2001	ADLE Kamran	24x36	Y
166	S216137			Khan Hamam, Yazd	01.05.2001	ADLE Kamran	24x36	Y
167	S216138			Khan Hamam, Yazd	01.05.2001	ADLE Kamran	24x36	Y
168	S216139			Khan Hamam, Yazd	01.05.2001	ADLE Kamran	24x36	Y
169	S216140			Khan Hamam, Yazd	01.05.2001	ADLE Kamran	24x36	Y
170	S216141			Khan Hamam, Yazd	01.05.2001	ADLE Kamran	24x36	Y
171	S216142			Khan Hamam, Yazd	01.05.2001	ADLE Kamran	24x36	Y
172	S216143			Khan Hamam, Yazd	01.05.2001	ADLE Kamran	24x36	Y
173	S216144			Khan Hamam, Yazd	01.05.2001	ADLE Kamran	24x36	Y
174	S216145			Khan Hamam, Yazd	01.05.2001	ADLE Kamran	24x36	Y
175	S216146			Khan Hamam, Yazd	01.05.2001	ADLE Kamran	24x36	Y
176	S216147			Khan Hamam, Yazd	01.05.2001	ADLE Kamran	24x36	Y
177	S216148			Khan Hamam, Yazd	01.05.2001	ADLE Kamran	24x36	Y
178	S216149			Khan Hamam, Yazd	01.05.2001	ADLE Kamran	24x36	Y
179	S216150			Khan Hamam, Yazd	01.05.2001	ADLE Kamran	24x36	Y
180	S216151			Nazem-o-tojar Hosseinieh, Yazd	01.05.2001	ADLE Kamran	24x36	Y
181	S216152			Nazem-o-tojar Hosseinieh, Yazd	01.05.2001	ADLE Kamran	24x36	Y
182	S216153			Nazem-o-tojar Hosseinieh, Yazd	01.05.2001	ADLE Kamran	24x36	Y
183	S216154			Nazem-o-tojar Hosseinieh, Yazd	01.05.2001	ADLE Kamran	24x36	Y
184	S216155			Nazem-o-tojar Hosseinieh, Yazd	01.05.2001	ADLE Kamran	24x36	Y
185	S216156			Nazem-o-tojar Hosseinieh, Yazd	01.05.2001	ADLE Kamran	24x36	Y
186	S216157			Nazem-o-tojar Hosseinieh, Yazd	01.05.2001	ADLE Kamran	24x36	Y
187	S216158			Nazem-o-tojar Hosseinieh, Yazd	01.05.2001	ADLE Kamran	24x36	Y
188	S216159			Nazem-o-tojar Hosseinieh, Yazd	01.05.2001	ADLE Kamran	24x36	Y
189	S216160			Nazem-o-tojar Hosseinieh, Yazd	01.05.2001	ADLE Kamran	24x36	Y
190	S216161			Nazem-o-tojar Hosseinieh, Yazd	01.05.2001	ADLE Kamran	24x36	Y
191	S216162			Nazem-o-tojar Hosseinieh, Yazd	01.05.2001	ADLE Kamran	24x36	Y
192	S216163			Nazem-o-tojar Hosseinieh, Yazd	01.05.2001	ADLE Kamran	24x36	Y
193	S216164			Nazem-o-tojar Hosseinieh, Yazd	01.05.2001	ADLE Kamran	24x36	Y
194	S216165			Nazem-o-tojar Hosseinieh, Yazd	01.05.2001	ADLE Kamran	24x36	Y
195	S216166			Nazem-o-tojar Hosseinieh, Yazd	01.05.2001	ADLE Kamran	24x36	Y
196	S216167			Nazem-o-tojar Hosseinieh, Yazd	01.05.2001	ADLE Kamran	24x36	Y
197	S216168			Nazem-o-tojar Hosseinieh, Yazd	01.05.2001	ADLE Kamran	24x36	Y
198	S216169			Nazem-o-tojar Hosseinieh, Yazd	01.05.2001	ADLE Kamran	24x36	Y
199	S216170			Nazem-o-tojar Hosseinieh, Yazd	01.05.2001	ADLE Kamran	24x36	Y
200	S216171			Nazem-o-tojar Hosseinieh, Yazd	01.05.2001	ADLE Kamran	24x36	Y

New Life for Old Structures

Various locations, Iran

List of Visual Materials

No	VM Num	CD Id	IMG Ord	VM Title	Date	Photographer	Format	Copyright
201	S216172			Nazem-o-tojar Hosseiniéh, Yazd	01.05.2001	ADLE Kamran	24x36	Y
202	S216173			Nazem-o-tojar Hosseiniéh, Yazd	01.05.2001	ADLE Kamran	24x36	Y
203	S216174			Nazem-o-tojar Hosseiniéh, Yazd	01.05.2001	ADLE Kamran	24x36	Y
204	S216175			Nazem-o-tojar Hosseiniéh, Yazd	01.05.2001	ADLE Kamran	24x36	Y
205	S216176			Nazem-o-tojar Hosseiniéh, Yazd	01.05.2001	ADLE Kamran	24x36	Y
206	S216177			Nazem-o-tojar Hosseiniéh, Yazd	01.05.2001	ADLE Kamran	24x36	Y
207	S216178			Nazem-o-tojar Hosseiniéh, Yazd	01.05.2001	ADLE Kamran	24x36	Y
208	S216179			Nazem-o-tojar Hosseiniéh, Yazd	01.05.2001	ADLE Kamran	24x36	Y
209	S216180			Nazem-o-tojar Hosseiniéh, Yazd	01.05.2001	ADLE Kamran	24x36	Y
210	S216181			Nazem-o-tojar Hosseiniéh, Yazd	01.05.2001	ADLE Kamran	24x36	Y
211	S216182			Nazem-o-tojar Hosseiniéh, Yazd	01.05.2001	ADLE Kamran	24x36	Y
212	S216183			Nazem-o-tojar Hosseiniéh, Yazd	01.05.2001	ADLE Kamran	24x36	Y
213	S216184			Nazem-o-tojar Hosseiniéh, Yazd	01.05.2001	ADLE Kamran	24x36	Y
214	S216185			Nazem-o-tojar Hosseiniéh, Yazd	01.05.2001	ADLE Kamran	24x36	Y
215	S216186			Nazem-o-tojar Hosseiniéh, Yazd	01.05.2001	ADLE Kamran	24x36	Y
216	S216187			Nazem-o-tojar Hosseiniéh, Yazd	01.05.2001	ADLE Kamran	24x36	Y
217	S216188			Nazem-o-tojar Hosseiniéh, Yazd	01.05.2001	ADLE Kamran	24x36	Y
218	S216189			Nazem-o-tojar Hosseiniéh, Yazd	01.05.2001	ADLE Kamran	24x36	Y
219	S216190			Nazem-o-tojar Hosseiniéh, Yazd	01.05.2001	ADLE Kamran	24x36	Y
220	S216191			Nazem-o-tojar Hosseiniéh, Yazd	01.05.2001	ADLE Kamran	24x36	Y
221	S216192			Nazem-o-tojar Hosseiniéh, Yazd	01.05.2001	ADLE Kamran	24x36	Y
222	S216193			Nazem-o-tojar Hosseiniéh, Yazd	01.05.2001	ADLE Kamran	24x36	Y
223	S216194			Nazem-o-tojar Hosseiniéh, Yazd	01.05.2001	ADLE Kamran	24x36	Y
224	S216195			Nazem-o-tojar Hosseiniéh, Yazd	01.05.2001	ADLE Kamran	24x36	Y
225	S216196			Nazem-o-tojar Hosseiniéh, Yazd	01.05.2001	ADLE Kamran	24x36	Y
226	S216197			Nazem-o-tojar Hosseiniéh, Yazd	01.05.2001	ADLE Kamran	24x36	Y
227	S216198			Nazem-o-tojar Hosseiniéh, Yazd	01.05.2001	ADLE Kamran	24x36	Y
228	S216199			Nazem-o-tojar Hosseiniéh, Yazd	01.05.2001	ADLE Kamran	24x36	Y
229	S216200			Nazem-o-tojar Hosseiniéh, Yazd	01.05.2001	ADLE Kamran	24x36	Y
230	S216201			Nazem-o-tojar Hosseiniéh, Yazd	01.05.2001	ADLE Kamran	24x36	Y
231	S216202			Nazem-o-tojar Hosseiniéh, Yazd	01.05.2001	ADLE Kamran	24x36	Y
232	S216203			Nazem-o-tojar Hosseiniéh, Yazd	01.05.2001	ADLE Kamran	24x36	Y
233	S216204			Nazem-o-tojar Hosseiniéh, Yazd	01.05.2001	ADLE Kamran	24x36	Y
234	S216205			Nazem-o-tojar Hosseiniéh, Yazd	01.05.2001	ADLE Kamran	24x36	Y
235	S216206			Nazem-o-tojar Hosseiniéh, Yazd	01.05.2001	ADLE Kamran	24x36	Y
236	S216207			Nazem-o-tojar Hosseiniéh, Yazd	01.05.2001	ADLE Kamran	24x36	Y
237	S216208			Nazem-o-tojar Hosseiniéh, Yazd	01.05.2001	ADLE Kamran	24x36	Y
238	S216209			Nazem-o-tojar Hosseiniéh, Yazd	01.05.2001	ADLE Kamran	24x36	Y
239	S216210			Nazem-o-tojar Hosseiniéh, Yazd	01.05.2001	ADLE Kamran	24x36	Y
240	S216211			Nazem-o-tojar Hosseiniéh, Yazd	01.05.2001	ADLE Kamran	24x36	Y
241	S216212			Nazem-o-tojar Hosseiniéh, Yazd	01.05.2001	ADLE Kamran	24x36	Y
242	S216213			Nazem-o-tojar Hosseiniéh, Yazd	01.05.2001	ADLE Kamran	24x36	Y
243	S216214			Nazem-o-tojar Hosseiniéh, Yazd	01.05.2001	ADLE Kamran	24x36	Y
244	S216215			Nazem-o-tojar Hosseiniéh, Yazd	01.05.2001	ADLE Kamran	24x36	Y
245	S216216			Nazem-o-tojar Hosseiniéh, Yazd	01.05.2001	ADLE Kamran	24x36	Y
246	S216217			Nazem-o-tojar Hosseiniéh, Yazd	01.05.2001	ADLE Kamran	24x36	Y
247	S216218			Nazem-o-tojar Hosseiniéh, Yazd	01.05.2001	ADLE Kamran	24x36	Y
248	S216219			Nazem-o-tojar Hosseiniéh, Yazd	01.05.2001	ADLE Kamran	24x36	Y
249	S216220			Nazem-o-tojar Hosseiniéh, Yazd	01.05.2001	ADLE Kamran	24x36	Y
250	S216221			Nazem-o-tojar Hosseiniéh, Yazd	01.05.2001	ADLE Kamran	24x36	Y

New Life for Old Structures

Various locations, Iran

List of Visual Materials

No	VM Num	CD Id	IMG Ord	VM Title	Date	Photographer	Format	Copyright
251	S216222			Nazem-o-tojar Hosseiniéh, Yazd	01.05.2001	ADLE Kamran	24x36	Y
252	S216223			Nazem-o-tojar Hosseiniéh, Yazd	01.05.2001	ADLE Kamran	24x36	Y
253	S216224			Nazem-o-tojar Hosseiniéh, Yazd	01.05.2001	ADLE Kamran	24x36	Y
254	S216225			Nazem-o-tojar Hosseiniéh, Yazd	01.05.2001	ADLE Kamran	24x36	Y
255	S216226			Nazem-o-tojar Hosseiniéh, Yazd	01.05.2001	ADLE Kamran	24x36	Y
256	S216227			Nazem-o-tojar Hosseiniéh, Yazd	01.05.2001	ADLE Kamran	24x36	Y
257	S216228			Nazem-o-tojar Hosseiniéh, Yazd	01.05.2001	ADLE Kamran	24x36	Y
258	S216229			Nazem-o-tojar Hosseiniéh, Yazd	01.05.2001	ADLE Kamran	24x36	Y
259	S216230			Nazem-o-tojar Hosseiniéh, Yazd	01.05.2001	ADLE Kamran	24x36	Y
260	S216231			Nazem-o-tojar Hosseiniéh, Yazd	01.05.2001	ADLE Kamran	24x36	Y
261	S216232			Nazem-o-tojar Hosseiniéh, Yazd	01.05.2001	ADLE Kamran	24x36	Y
262	S216233			Nazem-o-tojar Hosseiniéh, Yazd	01.05.2001	ADLE Kamran	24x36	Y
263	S216234			Nazem-o-tojar Hosseiniéh, Yazd	01.05.2001	ADLE Kamran	24x36	Y
264	S216235			Nazem-o-tojar Hosseiniéh, Yazd	01.05.2001	ADLE Kamran	24x36	Y
265	S216236			Nazem-o-tojar Hosseiniéh, Yazd	01.05.2001	ADLE Kamran	24x36	Y
266	S216237			Nazem-o-tojar Hosseiniéh, Yazd	01.05.2001	ADLE Kamran	24x36	Y
267	S216238			Nazem-o-tojar Hosseiniéh, Yazd	01.05.2001	ADLE Kamran	24x36	Y
268	S216239			Nazem-o-tojar Hosseiniéh, Yazd	01.05.2001	ADLE Kamran	24x36	Y
269	S216240			Nazem-o-tojar Hosseiniéh, Yazd	01.05.2001	ADLE Kamran	24x36	Y
270	S216241			Nazem-o-tojar Hosseiniéh, Yazd	01.05.2001	ADLE Kamran	24x36	Y
271	S216242			Nazem-o-tojar Hosseiniéh, Yazd	01.05.2001	ADLE Kamran	24x36	Y
272	S216243			Nazem-o-tojar Hosseiniéh, Yazd	01.05.2001	ADLE Kamran	24x36	Y
273	S216244			Nazem-o-tojar Hosseiniéh, Yazd	01.05.2001	ADLE Kamran	24x36	Y
274	S216245			Nazem-o-tojar Hosseiniéh, Yazd	01.05.2001	ADLE Kamran	24x36	Y
275	S216246			Nazem-o-tojar Hosseiniéh, Yazd	01.05.2001	ADLE Kamran	24x36	Y
276	S216247			Nazem-o-tojar Hosseiniéh, Yazd	01.05.2001	ADLE Kamran	24x36	Y
277	S216248			Nazem-o-tojar Hosseiniéh, Yazd	01.05.2001	ADLE Kamran	24x36	Y
278	S216249			Nazem-o-tojar Hosseiniéh, Yazd	01.05.2001	ADLE Kamran	24x36	Y
279	S216250			Nazem-o-tojar Hosseiniéh, Yazd	01.05.2001	ADLE Kamran	24x36	Y
280	S216251			Nazem-o-tojar Hosseiniéh, Yazd	01.05.2001	ADLE Kamran	24x36	Y
281	S216252			Nazem-o-tojar Hosseiniéh, Yazd	01.05.2001	ADLE Kamran	24x36	Y
282	S216253			Nilforooshan House, Isfahan	01.05.2001	ADLE Kamran	24x36	Y
283	S216254			Nilforooshan House, Isfahan	01.05.2001	ADLE Kamran	24x36	Y
284	S216255			Nilforooshan House, Isfahan	01.05.2001	ADLE Kamran	24x36	Y
285	S216256			Nilforooshan House, Isfahan	01.05.2001	ADLE Kamran	24x36	Y
286	S216257			Nilforooshan House, Isfahan	01.05.2001	ADLE Kamran	24x36	Y
287	S216258			Nilforooshan House, Isfahan	01.05.2001	ADLE Kamran	24x36	Y
288	S216259			Nilforooshan House, Isfahan	01.05.2001	ADLE Kamran	24x36	Y
289	S216260			Nilforooshan House, Isfahan	01.05.2001	ADLE Kamran	24x36	Y
290	S216261			Nilforooshan House, Isfahan	01.05.2001	ADLE Kamran	24x36	Y
291	S216262			Nilforooshan House, Isfahan	01.05.2001	ADLE Kamran	24x36	Y
292	S216263			Nilforooshan House, Isfahan	01.05.2001	ADLE Kamran	24x36	Y
293	S216264			Nilforooshan House, Isfahan	01.05.2001	ADLE Kamran	24x36	Y
294	S216265			Nilforooshan House, Isfahan	01.05.2001	ADLE Kamran	24x36	Y
295	S216266			Nilforooshan House, Isfahan	01.05.2001	ADLE Kamran	24x36	Y
296	S216267			Nilforooshan House, Isfahan	01.05.2001	ADLE Kamran	24x36	Y
297	S216268			Nilforooshan House, Isfahan	01.05.2001	ADLE Kamran	24x36	Y
298	S216269			Nilforooshan House, Isfahan	01.05.2001	ADLE Kamran	24x36	Y
299	S216270			Nilforooshan House, Isfahan	01.05.2001	ADLE Kamran	24x36	Y
300	S216271			Nilforooshan House, Isfahan	01.05.2001	ADLE Kamran	24x36	Y

New Life for Old Structures

Various locations, Iran

List of Visual Materials

No	VM Num	CD Id	IMG Ord	VM Title	Date	Photographer	Format	Copyright
301	S216272			Nilforooshan House, Isfahan	01.05.2001	ADLE Kamran	24x36	Y
302	S216273			Nilforooshan House, Isfahan	01.05.2001	ADLE Kamran	24x36	Y
303	S216274			Nilforooshan House, Isfahan	01.05.2001	ADLE Kamran	24x36	Y
304	S216275			Nilforooshan House, Isfahan	01.05.2001	ADLE Kamran	24x36	Y
305	S216276			Nilforooshan House, Isfahan	01.05.2001	ADLE Kamran	24x36	Y
306	S216277			Nilforooshan House, Isfahan	01.05.2001	ADLE Kamran	24x36	Y
307	S216278			Nilforooshan House, Isfahan	01.05.2001	ADLE Kamran	24x36	Y
308	S216279			Nilforooshan House, Isfahan	01.05.2001	ADLE Kamran	24x36	Y
309	S216280			Nilforooshan House, Isfahan	01.05.2001	ADLE Kamran	24x36	Y
310	S216281			Nilforooshan House, Isfahan	01.05.2001	ADLE Kamran	24x36	Y
311	S216282			Nilforooshan House, Isfahan	01.05.2001	ADLE Kamran	24x36	Y
312	S216283			Nilforooshan House, Isfahan	01.05.2001	ADLE Kamran	24x36	Y
313	S216284			Nilforooshan House, Isfahan	01.05.2001	ADLE Kamran	24x36	Y
314	S216285			Nilforooshan House, Isfahan	01.05.2001	ADLE Kamran	24x36	Y
315	S216286			Nilforooshan House, Isfahan	01.05.2001	ADLE Kamran	24x36	Y
316	S216287			Nilforooshan House, Isfahan	01.05.2001	ADLE Kamran	24x36	Y
317	S216288			Nilforooshan House, Isfahan	01.05.2001	ADLE Kamran	24x36	Y
318	S216289			Nilforooshan House, Isfahan	01.05.2001	ADLE Kamran	24x36	Y
319	S216290			Nilforooshan House, Isfahan	01.05.2001	ADLE Kamran	24x36	Y
320	S216291			Nilforooshan House, Isfahan	01.05.2001	ADLE Kamran	24x36	Y
321	S216292			Nilforooshan House, Isfahan	01.05.2001	ADLE Kamran	24x36	Y
322	S216293			Nilforooshan House, Isfahan	01.05.2001	ADLE Kamran	24x36	Y
323	S216294			Nilforooshan House, Isfahan	01.05.2001	ADLE Kamran	24x36	Y
324	S216295			Nilforooshan House, Isfahan	01.05.2001	ADLE Kamran	24x36	Y
325	S216296			Nilforooshan House, Isfahan	01.05.2001	ADLE Kamran	24x36	Y
326	S216297			Nilforooshan House, Isfahan	01.05.2001	ADLE Kamran	24x36	Y
327	S216298			Nilforooshan House, Isfahan	01.05.2001	ADLE Kamran	24x36	Y
328	S216299			Nilforooshan House, Isfahan	01.05.2001	ADLE Kamran	24x36	Y
329	S216300			Nilforooshan House, Isfahan	01.05.2001	ADLE Kamran	24x36	Y
330	S216301			Nilforooshan House, Isfahan	01.05.2001	ADLE Kamran	24x36	Y
331	S216302			Nilforooshan House, Isfahan	01.05.2001	ADLE Kamran	24x36	Y
332	S216303			Nilforooshan House, Isfahan	01.05.2001	ADLE Kamran	24x36	Y
333	S216304			Nilforooshan House, Isfahan	01.05.2001	ADLE Kamran	24x36	Y
334	S216305			Nilforooshan House, Isfahan	01.05.2001	ADLE Kamran	24x36	Y
335	S216306			Nilforooshan House, Isfahan	01.05.2001	ADLE Kamran	24x36	Y
336	S216307			Nilforooshan House, Isfahan	01.05.2001	ADLE Kamran	24x36	Y
337	S216308			Nilforooshan House, Isfahan	01.05.2001	ADLE Kamran	24x36	Y
338	S216309			Nilforooshan House, Isfahan	01.05.2001	ADLE Kamran	24x36	Y
339	S216310			Nilforooshan House, Isfahan	01.05.2001	ADLE Kamran	24x36	Y
340	S216311			Nilforooshan House, Isfahan	01.05.2001	ADLE Kamran	24x36	Y
341	S216312			Nilforooshan House, Isfahan	01.05.2001	ADLE Kamran	24x36	Y
342	S216313			Nilforooshan House, Isfahan	01.05.2001	ADLE Kamran	24x36	Y
343	S216314			Nilforooshan House, Isfahan	01.05.2001	ADLE Kamran	24x36	Y
344	S216315			Nilforooshan House, Isfahan	01.05.2001	ADLE Kamran	24x36	Y
345	S216316			Nilforooshan House, Isfahan	01.05.2001	ADLE Kamran	24x36	Y
346	S216317			Nilforooshan House, Isfahan	01.05.2001	ADLE Kamran	24x36	Y
347	S216318			Nilforooshan House, Isfahan	01.05.2001	ADLE Kamran	24x36	Y
348	S216319			Nilforooshan House, Isfahan	01.05.2001	ADLE Kamran	24x36	Y
349	S216320			Nilforooshan House, Isfahan	01.05.2001	ADLE Kamran	24x36	Y
350	S216321			Nilforooshan House, Isfahan	01.05.2001	ADLE Kamran	24x36	Y

New Life for Old Structures

Various locations, Iran

List of Visual Materials

No	VM Num	CD Id	IMG Ord	VM Title	Date	Photographer	Format	Copyright
351	S216322			Nilforooshan House, Isfahan	01.05.2001	ADLE Kamran	24x36	Y
352	S216323			Nilforooshan House, Isfahan	01.05.2001	ADLE Kamran	24x36	Y
353	S216324			Nilforooshan House, Isfahan	01.05.2001	ADLE Kamran	24x36	Y
354	S216325			Nilforooshan House, Isfahan	01.05.2001	ADLE Kamran	24x36	Y
355	S216326			Nilforooshan House, Isfahan	01.05.2001	ADLE Kamran	24x36	Y
356	S216327			Nilforooshan House, Isfahan	01.05.2001	ADLE Kamran	24x36	Y
357	S216328			Nilforooshan House, Isfahan	01.05.2001	ADLE Kamran	24x36	Y
358	S216329			Nilforooshan House, Isfahan	01.05.2001	ADLE Kamran	24x36	Y
359	S216330			Nilforooshan House, Isfahan	01.05.2001	ADLE Kamran	24x36	Y
360	S216331			Nilforooshan House, Isfahan	01.05.2001	ADLE Kamran	24x36	Y
361	S216332			Nilforooshan House, Isfahan	01.05.2001	ADLE Kamran	24x36	Y
362	S216333			Nilforooshan House, Isfahan	01.05.2001	ADLE Kamran	24x36	Y
363	S216334			Nilforooshan House, Isfahan	01.05.2001	ADLE Kamran	24x36	Y
364	S216335			Nilforooshan House, Isfahan	01.05.2001	ADLE Kamran	24x36	Y
365	S216336			Nilforooshan House, Isfahan	01.05.2001	ADLE Kamran	24x36	Y
366	S216337			Nilforooshan House, Isfahan	01.05.2001	ADLE Kamran	24x36	Y
367	S216338			Nilforooshan House, Isfahan	01.05.2001	ADLE Kamran	24x36	Y
368	S216339			Nilforooshan House, Isfahan	01.05.2001	ADLE Kamran	24x36	Y
369	S216340			Nilforooshan House, Isfahan	01.05.2001	ADLE Kamran	24x36	Y
370	S216341			Nilforooshan House, Isfahan	01.05.2001	ADLE Kamran	24x36	Y
371	S216342			Nilforooshan House, Isfahan	01.05.2001	ADLE Kamran	24x36	Y
372	S216343			Nilforooshan House, Isfahan	01.05.2001	ADLE Kamran	24x36	Y
373	S216344			Nilforooshan House, Isfahan	01.05.2001	ADLE Kamran	24x36	Y
374	S216345			Nilforooshan House, Isfahan	01.05.2001	ADLE Kamran	24x36	Y
375	S216346			Nilforooshan House, Isfahan	01.05.2001	ADLE Kamran	24x36	Y
376	S216347			Nilforooshan House, Isfahan	01.05.2001	ADLE Kamran	24x36	Y
377	S216348			Nilforooshan House, Isfahan	01.05.2001	ADLE Kamran	24x36	Y
378	S216349			Nilforooshan House, Isfahan	01.05.2001	ADLE Kamran	24x36	Y
379	S216350			Nilforooshan House, Isfahan	01.05.2001	ADLE Kamran	24x36	Y
380	S216351			Nilforooshan House, Isfahan	01.05.2001	ADLE Kamran	24x36	Y
381	S216352			Nilforooshan House, Isfahan	01.05.2001	ADLE Kamran	24x36	Y
382	S216353			Nilforooshan House, Isfahan	01.05.2001	ADLE Kamran	24x36	Y
383	S216354			Nilforooshan House, Isfahan	01.05.2001	ADLE Kamran	24x36	Y
384	S216355			Nilforooshan House, Isfahan	01.05.2001	ADLE Kamran	24x36	Y
385	S216356			Nilforooshan House, Isfahan	01.05.2001	ADLE Kamran	24x36	Y
386	S216357			Nilforooshan House, Isfahan	01.05.2001	ADLE Kamran	24x36	Y
387	S216358			Nilforooshan House, Isfahan	01.05.2001	ADLE Kamran	24x36	Y
388	S216359			Nilforooshan House, Isfahan	01.05.2001	ADLE Kamran	24x36	Y
389	S216360			Nilforooshan House, Isfahan	01.05.2001	ADLE Kamran	24x36	Y
390	S216361			Nilforooshan House, Isfahan	01.05.2001	ADLE Kamran	24x36	Y
391	S216362			Nilforooshan House, Isfahan	01.05.2001	ADLE Kamran	24x36	Y
392	S216363			Nilforooshan House, Isfahan	01.05.2001	ADLE Kamran	24x36	Y
393	S216364			Nilforooshan House, Isfahan	01.05.2001	ADLE Kamran	24x36	Y
394	S216365			Nilforooshan House, Isfahan	01.05.2001	ADLE Kamran	24x36	Y
395	S216366			Nilforooshan House, Isfahan	01.05.2001	ADLE Kamran	24x36	Y
396	S216367			Nilforooshan House, Isfahan	01.05.2001	ADLE Kamran	24x36	Y
397	S216368			Nilforooshan House, Isfahan	01.05.2001	ADLE Kamran	24x36	Y
398	S216369			Nilforooshan House, Isfahan	01.05.2001	ADLE Kamran	24x36	Y
399	S216370			Nilforooshan House, Isfahan	01.05.2001	ADLE Kamran	24x36	Y
400	S216371			Nilforooshan House, Isfahan	01.05.2001	ADLE Kamran	24x36	Y

New Life for Old Structures

Various locations, Iran

List of Visual Materials

No	VM Num	CD Id	IMG Ord	VM Title	Date	Photographer	Format	Copyright
401	S216372			Nilforooshan House, Isfahan	01.05.2001	ADLE Kamran	24x36	Y
402	S216373			Nilforooshan House, Isfahan	01.05.2001	ADLE Kamran	24x36	Y
403	S216374			Nilforooshan House, Isfahan	01.05.2001	ADLE Kamran	24x36	Y
404	S216375			Nilforooshan House, Isfahan	01.05.2001	ADLE Kamran	24x36	Y
405	S216376			Nilforooshan House, Isfahan	01.05.2001	ADLE Kamran	24x36	Y
406	S216377			Nilforooshan House, Isfahan	01.05.2001	ADLE Kamran	24x36	Y
407	S216378			Nilforooshan House, Isfahan	01.05.2001	ADLE Kamran	24x36	Y
408	S216379			Nilforooshan House, Isfahan	01.05.2001	ADLE Kamran	24x36	Y
409	S216380			Nilforooshan House, Isfahan	01.05.2001	ADLE Kamran	24x36	Y
410	S216381			Nilforooshan House, Isfahan	01.05.2001	ADLE Kamran	24x36	Y
411	S216382			Nilforooshan House, Isfahan	01.05.2001	ADLE Kamran	24x36	Y
412	S216383			Nilforooshan House, Isfahan	01.05.2001	ADLE Kamran	24x36	Y
413	S216384			Nilforooshan House, Isfahan	01.05.2001	ADLE Kamran	24x36	Y
414	S216385			Nilforooshan House, Isfahan	01.05.2001	ADLE Kamran	24x36	Y
415	S216386			Nilforooshan House, Isfahan	01.05.2001	ADLE Kamran	24x36	Y
416	S216387			Nilforooshan House, Isfahan	01.05.2001	ADLE Kamran	24x36	Y
417	S216388			Nilforooshan House, Isfahan	01.05.2001	ADLE Kamran	24x36	Y
418	S216389			Nilforooshan House, Isfahan	01.05.2001	ADLE Kamran	24x36	Y
419	S216390			Nilforooshan House, Isfahan	01.05.2001	ADLE Kamran	24x36	Y
420	S216391			Nilforooshan House, Isfahan	01.05.2001	ADLE Kamran	24x36	Y
421	S216392			Nilforooshan House, Isfahan	01.05.2001	ADLE Kamran	24x36	Y
422	S216393			Nilforooshan House, Isfahan	01.05.2001	ADLE Kamran	24x36	Y
423	S216394			Nilforooshan House, Isfahan	01.05.2001	ADLE Kamran	24x36	Y
424	S216395			Nilforooshan House, Isfahan	01.05.2001	ADLE Kamran	24x36	Y
425	S216396			Nilforooshan House, Isfahan	01.05.2001	ADLE Kamran	24x36	Y
426	S216397			Nilforooshan House, Isfahan	01.05.2001	ADLE Kamran	24x36	Y
427	S216398			Nilforooshan House, Isfahan	01.05.2001	ADLE Kamran	24x36	Y
428	S216399			Nilforooshan House, Isfahan	01.05.2001	ADLE Kamran	24x36	Y
429	S216400			Aalam House, Isfahan	01.05.2001	ADLE Kamran	24x36	Y
430	S216401			Aalam House, Isfahan	01.05.2001	ADLE Kamran	24x36	Y
431	S216402			Aalam House, Isfahan	01.05.2001	ADLE Kamran	24x36	Y
432	S216403			Aalam House, Isfahan	01.05.2001	ADLE Kamran	24x36	Y
433	S216404			Aalam House, Isfahan	01.05.2001	ADLE Kamran	24x36	Y
434	S216405			Aalam House, Isfahan	01.05.2001	ADLE Kamran	24x36	Y
435	S216406			Aalam House, Isfahan	01.05.2001	ADLE Kamran	24x36	Y
436	S216407			Aalam House, Isfahan	01.05.2001	ADLE Kamran	24x36	Y
437	S216408			Aalam House, Isfahan	01.05.2001	ADLE Kamran	24x36	Y
438	S216409			Aalam House, Isfahan	01.05.2001	ADLE Kamran	24x36	Y
439	S216410			Aalam House, Isfahan	01.05.2001	ADLE Kamran	24x36	Y
440	S216411			Aalam House, Isfahan	01.05.2001	ADLE Kamran	24x36	Y
441	S216412			Aalam House, Isfahan	01.05.2001	ADLE Kamran	24x36	Y
442	S216413			Aalam House, Isfahan	01.05.2001	ADLE Kamran	24x36	Y
443	S216414			Aalam House, Isfahan	01.05.2001	ADLE Kamran	24x36	Y
444	S216415			Aalam House, Isfahan	01.05.2001	ADLE Kamran	24x36	Y
445	S216416			Aalam House, Isfahan	01.05.2001	ADLE Kamran	24x36	Y
446	S216417			Aalam House, Isfahan	01.05.2001	ADLE Kamran	24x36	Y
447	S216418			Aalam House, Isfahan	01.05.2001	ADLE Kamran	24x36	Y
448	S216419			Aalam House, Isfahan	01.05.2001	ADLE Kamran	24x36	Y
449	S216420			Aalam House, Isfahan	01.05.2001	ADLE Kamran	24x36	Y
450	S216421			Aalam House, Isfahan	01.05.2001	ADLE Kamran	24x36	Y

New Life for Old Structures

Various locations, Iran

List of Visual Materials

No	VM Num	CD Id	IMG Ord	VM Title	Date	Photographer	Format	Copyright
451	S216422			Aalam House, Isfahan	01.05.2001	ADLE Kamran	24x36	Y
452	S216423			Aalam House, Isfahan	01.05.2001	ADLE Kamran	24x36	Y
453	S216424			Aalam House, Isfahan	01.05.2001	ADLE Kamran	24x36	Y
454	S216425			Aalam House, Isfahan	01.05.2001	ADLE Kamran	24x36	Y
455	S216426			Aalam House, Isfahan	01.05.2001	ADLE Kamran	24x36	Y
456	S216427			Aalam House, Isfahan	01.05.2001	ADLE Kamran	24x36	Y
457	S216428			Aalam House, Isfahan	01.05.2001	ADLE Kamran	24x36	Y
458	S216429			Aalam House, Isfahan	01.05.2001	ADLE Kamran	24x36	Y
459	S216430			Aalam House, Isfahan	01.05.2001	ADLE Kamran	24x36	Y
460	S216431			Aalam House, Isfahan	01.05.2001	ADLE Kamran	24x36	Y
461	S216432			Aalam House, Isfahan	01.05.2001	ADLE Kamran	24x36	Y
462	S216433			Aalam House, Isfahan	01.05.2001	ADLE Kamran	24x36	Y
463	S216434			Aalam House, Isfahan	01.05.2001	ADLE Kamran	24x36	Y
464	S216435			Aalam House, Isfahan	01.05.2001	ADLE Kamran	24x36	Y
465	S216436			Aalam House, Isfahan	01.05.2001	ADLE Kamran	24x36	Y
466	S216437			Aalam House, Isfahan	01.05.2001	ADLE Kamran	24x36	Y
467	S216438			Aalam House, Isfahan	01.05.2001	ADLE Kamran	24x36	Y
468	S216439			Aalam House, Isfahan	01.05.2001	ADLE Kamran	24x36	Y
469	S216440			Aalam House, Isfahan	01.05.2001	ADLE Kamran	24x36	Y
470	S216441			Aalam House, Isfahan	01.05.2001	ADLE Kamran	24x36	Y
471	S216442			Aalam House, Isfahan	01.05.2001	ADLE Kamran	24x36	Y
472	S216443			Aalam House, Isfahan	01.05.2001	ADLE Kamran	24x36	Y
473	S216444			Aalam House, Isfahan	01.05.2001	ADLE Kamran	24x36	Y
474	S216445			Aalam House, Isfahan	01.05.2001	ADLE Kamran	24x36	Y
475	S216446			Aalam House, Isfahan	01.05.2001	ADLE Kamran	24x36	Y
476	S216447			Aalam House, Isfahan	01.05.2001	ADLE Kamran	24x36	Y
477	S216448			Aalam House, Isfahan	01.05.2001	ADLE Kamran	24x36	Y
478	S216449			Aalam House, Isfahan	01.05.2001	ADLE Kamran	24x36	Y
479	S216450			Aalam House, Isfahan	01.05.2001	ADLE Kamran	24x36	Y
480	S216451			Aalam House, Isfahan	01.05.2001	ADLE Kamran	24x36	Y
481	S216452			Aalam House, Isfahan	01.05.2001	ADLE Kamran	24x36	Y
482	S216453			Aalam House, Isfahan	01.05.2001	ADLE Kamran	24x36	Y
483	S216454			Aalam House, Isfahan	01.05.2001	ADLE Kamran	24x36	Y
484	S216455			Aalam House, Isfahan	01.05.2001	ADLE Kamran	24x36	Y
485	S216456			Aalam House, Isfahan	01.05.2001	ADLE Kamran	24x36	Y
486	S216457			Aalam House, Isfahan	01.05.2001	ADLE Kamran	24x36	Y
487	S216458			Aalam House, Isfahan	01.05.2001	ADLE Kamran	24x36	Y
488	S216459			Aalam House, Isfahan	01.05.2001	ADLE Kamran	24x36	Y
489	S216460			Aalam House, Isfahan	01.05.2001	ADLE Kamran	24x36	Y
490	S216461			Aalam House, Isfahan	01.05.2001	ADLE Kamran	24x36	Y
491	S216462			Aalam House, Isfahan	01.05.2001	ADLE Kamran	24x36	Y
492	S216463			Aalam House, Isfahan	01.05.2001	ADLE Kamran	24x36	Y
493	S216464			Aalam House, Isfahan	01.05.2001	ADLE Kamran	24x36	Y
494	S216465			Aalam House, Isfahan	01.05.2001	ADLE Kamran	24x36	Y
495	S216466			Aalam House, Isfahan	01.05.2001	ADLE Kamran	24x36	Y
496	S216467			Aalam House, Isfahan	01.05.2001	ADLE Kamran	24x36	Y
497	S216468			Aalam House, Isfahan	01.05.2001	ADLE Kamran	24x36	Y
498	S216469			Aalam House, Isfahan	01.05.2001	ADLE Kamran	24x36	Y
499	S216470			Aalam House, Isfahan	01.05.2001	ADLE Kamran	24x36	Y
500	S216471			Aalam House, Isfahan	01.05.2001	ADLE Kamran	24x36	Y

New Life for Old Structures

Various locations, Iran

List of Visual Materials

No	VM Num	CD Id	IMG Ord	VM Title	Date	Photographer	Format	Copyright
501	S216472			Aalam House, Isfahan	01.05.2001	ADLE Kamran	24x36	Y
502	S216473			Aalam House, Isfahan	01.05.2001	ADLE Kamran	24x36	Y
503	S216474			Aalam House, Isfahan	01.05.2001	ADLE Kamran	24x36	Y
504	S216475			Aalam House, Isfahan	01.05.2001	ADLE Kamran	24x36	Y
505	S216476			Aalam House, Isfahan	01.05.2001	ADLE Kamran	24x36	Y
506	S216477			Aalam House, Isfahan	01.05.2001	ADLE Kamran	24x36	Y
507	S216478			Aalam House, Isfahan	01.05.2001	ADLE Kamran	24x36	Y
508	S216479			Aalam House, Isfahan	01.05.2001	ADLE Kamran	24x36	Y
509	S216480			Aalam House, Isfahan	01.05.2001	ADLE Kamran	24x36	Y
510	S216481			Aalam House, Isfahan	01.05.2001	ADLE Kamran	24x36	Y
511	S216482			Aalam House, Isfahan	01.05.2001	ADLE Kamran	24x36	Y
512	S216483			Aalam House, Isfahan	01.05.2001	ADLE Kamran	24x36	Y
513	S216484			Aalam House, Isfahan	01.05.2001	ADLE Kamran	24x36	Y
514	S216485			Aalam House, Isfahan	01.05.2001	ADLE Kamran	24x36	Y
515	S216486			Aalam House, Isfahan	01.05.2001	ADLE Kamran	24x36	Y
516	S216487			Aalam House, Isfahan	01.05.2001	ADLE Kamran	24x36	Y
517	S216488			Aalam House, Isfahan	01.05.2001	ADLE Kamran	24x36	Y
518	S216489			Aalam House, Isfahan	01.05.2001	ADLE Kamran	24x36	Y
519	S216490			Aalam House, Isfahan	01.05.2001	ADLE Kamran	24x36	Y
520	S216491			Aalam House, Isfahan	01.05.2001	ADLE Kamran	24x36	Y
521	S216492			Aalam House, Isfahan	01.05.2001	ADLE Kamran	24x36	Y
522	S216493			Aalam House, Isfahan	01.05.2001	ADLE Kamran	24x36	Y
523	S216494			Aalam House, Isfahan	01.05.2001	ADLE Kamran	24x36	Y
524	S216495			Aalam House, Isfahan	01.05.2001	ADLE Kamran	24x36	Y
525	S216496			Aalam House, Isfahan	01.05.2001	ADLE Kamran	24x36	Y
526	S216497			Aalam House, Isfahan	01.05.2001	ADLE Kamran	24x36	Y
527	S216498			Aalam House, Isfahan	01.05.2001	ADLE Kamran	24x36	Y
528	S216499			Aalam House, Isfahan	01.05.2001	ADLE Kamran	24x36	Y
529	S216500			Aalam House, Isfahan	01.05.2001	ADLE Kamran	24x36	Y
530	S216501			Aalam House, Isfahan	01.05.2001	ADLE Kamran	24x36	Y
531	S216502			Aalam House, Isfahan	01.05.2001	ADLE Kamran	24x36	Y
532	S216503			Aalam House, Isfahan	01.05.2001	ADLE Kamran	24x36	Y
533	S216504			Aalam House, Isfahan	01.05.2001	ADLE Kamran	24x36	Y
534	S216505			Aalam House, Isfahan	01.05.2001	ADLE Kamran	24x36	Y
535	S216506			Aalam House, Isfahan	01.05.2001	ADLE Kamran	24x36	Y
536	S216507			Aalam House, Isfahan	01.05.2001	ADLE Kamran	24x36	Y
537	S216508			Aalam House, Isfahan	01.05.2001	ADLE Kamran	24x36	Y
538	S216509			Aalam House, Isfahan	01.05.2001	ADLE Kamran	24x36	Y
539	S216510			Aalam House, Isfahan	01.05.2001	ADLE Kamran	24x36	Y
540	S216511			Aalam House, Isfahan	01.05.2001	ADLE Kamran	24x36	Y
541	S216512			Aalam House, Isfahan	01.05.2001	ADLE Kamran	24x36	Y
542	S216513			Aalam House, Isfahan	01.05.2001	ADLE Kamran	24x36	Y
543	S216514			Aalam House, Isfahan	01.05.2001	ADLE Kamran	24x36	Y
544	S216515			Aalam House, Isfahan	01.05.2001	ADLE Kamran	24x36	Y
545	S216516			Aalam House, Isfahan	01.05.2001	ADLE Kamran	24x36	Y
546	S216517			Aalam House, Isfahan	01.05.2001	ADLE Kamran	24x36	Y
547	S216518			Aalam House, Isfahan	01.05.2001	ADLE Kamran	24x36	Y
548	S216519			Aalam House, Isfahan	01.05.2001	ADLE Kamran	24x36	Y
549	S216520			Aalam House, Isfahan	01.05.2001	ADLE Kamran	24x36	Y
550	S216521			Aalam House, Isfahan	01.05.2001	ADLE Kamran	24x36	Y

New Life for Old Structures

Various locations, Iran

List of Visual Materials

No	VM Num	CD Id	IMG Ord	VM Title	Date	Photographer	Format	Copyright
551	S216522			Aalam House, Isfahan	01.05.2001	ADLE Kamran	24x36	Y
552	S216523			Aalam House, Isfahan	01.05.2001	ADLE Kamran	24x36	Y
553	S216524			Aalam House, Isfahan	01.05.2001	ADLE Kamran	24x36	Y
554	S216525			Aalam House, Isfahan	01.05.2001	ADLE Kamran	24x36	Y
555	S216526			Aalam House, Isfahan	01.05.2001	ADLE Kamran	24x36	Y
556	S216527			Aalam House, Isfahan	01.05.2001	ADLE Kamran	24x36	Y
557	S216528			Aalam House, Isfahan	01.05.2001	ADLE Kamran	24x36	Y
558	S216529			Aalam House, Isfahan	01.05.2001	ADLE Kamran	24x36	Y
559	S216530			Aalam House, Isfahan	01.05.2001	ADLE Kamran	24x36	Y
560	S216531			Aalam House, Isfahan	01.05.2001	ADLE Kamran	24x36	Y
561	S216532			Aalam House, Isfahan	01.05.2001	ADLE Kamran	24x36	Y
562	S216533			Aalam House, Isfahan	01.05.2001	ADLE Kamran	24x36	Y
563	S216534			Aalam House, Isfahan	01.05.2001	ADLE Kamran	24x36	Y
564	S216535			Aalam House, Isfahan	01.05.2001	ADLE Kamran	24x36	Y
565	S216536			Aalam House, Isfahan	01.05.2001	ADLE Kamran	24x36	Y
566	S216537			Aalam House, Isfahan	01.05.2001	ADLE Kamran	24x36	Y
567	S216538			Aalam House, Isfahan	01.05.2001	ADLE Kamran	24x36	Y
568	S216539			Aalam House, Isfahan	01.05.2001	ADLE Kamran	24x36	Y
569	S216540			Aalam House, Isfahan	01.05.2001	ADLE Kamran	24x36	Y
570	S216541			Ghodssieh School, Isfahan	01.05.2001	ADLE Kamran	24x36	Y
571	S216542			Ghodssieh School, Isfahan	01.05.2001	ADLE Kamran	24x36	Y
572	S216543			Ghodssieh School, Isfahan	01.05.2001	ADLE Kamran	24x36	Y
573	S216544			Ghodssieh School, Isfahan	01.05.2001	ADLE Kamran	24x36	Y
574	S216545			Ghodssieh School, Isfahan	01.05.2001	ADLE Kamran	24x36	Y
575	S216546			Ghodssieh School, Isfahan	01.05.2001	ADLE Kamran	24x36	Y
576	S216547			Ghodssieh School, Isfahan	01.05.2001	ADLE Kamran	24x36	Y
577	S216548			Ghodssieh School, Isfahan	01.05.2001	ADLE Kamran	24x36	Y
578	S216549			Ghodssieh School, Isfahan	01.05.2001	ADLE Kamran	24x36	Y
579	S216550			Ghodssieh School, Isfahan	01.05.2001	ADLE Kamran	24x36	Y
580	S216551			Ghodssieh School, Isfahan	01.05.2001	ADLE Kamran	24x36	Y
581	S216552			Ghodssieh School, Isfahan	01.05.2001	ADLE Kamran	24x36	Y
582	S216553			Ghodssieh School, Isfahan	01.05.2001	ADLE Kamran	24x36	Y
583	S216554			Ghodssieh School, Isfahan	01.05.2001	ADLE Kamran	24x36	Y
584	S216555			Ghodssieh School, Isfahan	01.05.2001	ADLE Kamran	24x36	Y
585	S216556			Ghodssieh School, Isfahan	01.05.2001	ADLE Kamran	24x36	Y
586	S216557			Ghodssieh School, Isfahan	01.05.2001	ADLE Kamran	24x36	Y
587	S216558			Ghodssieh School, Isfahan	01.05.2001	ADLE Kamran	24x36	Y
588	S216559			Ghodssieh School, Isfahan	01.05.2001	ADLE Kamran	24x36	Y
589	S216560			Ghodssieh School, Isfahan	01.05.2001	ADLE Kamran	24x36	Y
590	S216561			Ghodssieh School, Isfahan	01.05.2001	ADLE Kamran	24x36	Y
591	S216562			Ghodssieh School, Isfahan	01.05.2001	ADLE Kamran	24x36	Y
592	S216563			Ghodssieh School, Isfahan	01.05.2001	ADLE Kamran	24x36	Y
593	S216564			Ghodssieh School, Isfahan	01.05.2001	ADLE Kamran	24x36	Y
594	S216565			Ghodssieh School, Isfahan	01.05.2001	ADLE Kamran	24x36	Y
595	S216566			Ghodssieh School, Isfahan	01.05.2001	ADLE Kamran	24x36	Y
596	S216567			Ghodssieh School, Isfahan	01.05.2001	ADLE Kamran	24x36	Y
597	S216568			Ghodssieh School, Isfahan	01.05.2001	ADLE Kamran	24x36	Y
598	S216569			Ghodssieh School, Isfahan	01.05.2001	ADLE Kamran	24x36	Y
599	S216570			Ghodssieh School, Isfahan	01.05.2001	ADLE Kamran	24x36	Y
600	S216571			Ghodssieh School, Isfahan	01.05.2001	ADLE Kamran	24x36	Y

New Life for Old Structures

Various locations, Iran

List of Visual Materials

No	VM Num	CD Id	IMG Ord	VM Title	Date	Photographer	Format	Copyright
601	S216572			Ghodssieh School, Isfahan	01.05.2001	ADLE Kamran	24x36	Y
602	S216573			Ghodssieh School, Isfahan	01.05.2001	ADLE Kamran	24x36	Y
603	S216574			Ghodssieh School, Isfahan	01.05.2001	ADLE Kamran	24x36	Y
604	S216575			Ghodssieh School, Isfahan	01.05.2001	ADLE Kamran	24x36	Y
605	S216576			Ghodssieh School, Isfahan	01.05.2001	ADLE Kamran	24x36	Y
606	S216577			Ghodssieh School, Isfahan	01.05.2001	ADLE Kamran	24x36	Y
607	S216578			Ghodssieh School, Isfahan	01.05.2001	ADLE Kamran	24x36	Y
608	S216579			Ghodssieh School, Isfahan	01.05.2001	ADLE Kamran	24x36	Y
609	S216580			Ghodssieh School, Isfahan	01.05.2001	ADLE Kamran	24x36	Y
610	S216581			Vazir Hammam, Isfahan	01.05.2001	ADLE Kamran	24x36	Y
611	S216582			Vazir Hammam, Isfahan	01.05.2001	ADLE Kamran	24x36	Y
612	S216583			Vazir Hammam, Isfahan	01.05.2001	ADLE Kamran	24x36	Y
613	S216584			Vazir Hammam, Isfahan	01.05.2001	ADLE Kamran	24x36	Y
614	S216585			Vazir Hammam, Isfahan	01.05.2001	ADLE Kamran	24x36	Y
615	S216586			Vazir Hammam, Isfahan	01.05.2001	ADLE Kamran	24x36	Y
616	S216587			Vazir Hammam, Isfahan	01.05.2001	ADLE Kamran	24x36	Y
617	S216588			Vazir Hammam, Isfahan	01.05.2001	ADLE Kamran	24x36	Y
618	S216589			Vazir Hammam, Isfahan	01.05.2001	ADLE Kamran	24x36	Y
619	S216590			Vazir Hammam, Isfahan	01.05.2001	ADLE Kamran	24x36	Y
620	S216591			Vazir Hammam, Isfahan	01.05.2001	ADLE Kamran	24x36	Y
621	S216592			Vazir Hammam, Isfahan	01.05.2001	ADLE Kamran	24x36	Y
622	S216593			Vazir Hammam, Isfahan	01.05.2001	ADLE Kamran	24x36	Y
623	S216594			Vazir Hammam, Isfahan	01.05.2001	ADLE Kamran	24x36	Y
624	S216595			Vazir Hammam, Isfahan	01.05.2001	ADLE Kamran	24x36	Y
625	S216596			Vazir Hammam, Isfahan	01.05.2001	ADLE Kamran	24x36	Y
626	S216597			Vazir Hammam, Isfahan	01.05.2001	ADLE Kamran	24x36	Y
627	S216598			Vazir Hammam, Isfahan	01.05.2001	ADLE Kamran	24x36	Y
628	S216599			Vazir Hammam, Isfahan	01.05.2001	ADLE Kamran	24x36	Y
629	S216600			Vazir Hammam, Isfahan	01.05.2001	ADLE Kamran	24x36	Y
630	S216601			Vazir Hammam, Isfahan	01.05.2001	ADLE Kamran	24x36	Y
631	S216602	CT00746	IMG0001	Vazir Hammam, Isfahan	01.05.2001	ADLE Kamran	24x36	Y
632	S216603	CT00746	IMG0002	Vazir Hammam, Isfahan	01.05.2001	ADLE Kamran	24x36	Y
633	S216604	CT00746	IMG0003	Vazir Hammam, Isfahan	01.05.2001	ADLE Kamran	24x36	Y
634	S216605	CT00746	IMG0004	Vazir Hammam, Isfahan	01.05.2001	ADLE Kamran	24x36	Y
635	S216606	CT00746	IMG0005	Vazir Hammam, Isfahan	01.05.2001	ADLE Kamran	24x36	Y
636	S216607	CT00746	IMG0006	Vazir Hammam, Isfahan	01.05.2001	ADLE Kamran	24x36	Y
637	S216608	CT00746	IMG0007	Vazir Hammam, Isfahan	01.05.2001	ADLE Kamran	24x36	Y
638	S216609	CT00746	IMG0008	Vazir Hammam, Isfahan	01.05.2001	ADLE Kamran	24x36	Y
639	S216610	CT00746	IMG0009	Vazir Hammam, Isfahan	01.05.2001	ADLE Kamran	24x36	Y
640	S216611	CT00746	IMG0010	Vazir Hammam, Isfahan	01.05.2001	ADLE Kamran	24x36	Y
641	S216612	CT00746	IMG0011	Vazir Hammam, Isfahan	01.05.2001	ADLE Kamran	24x36	Y
642	S216613	CT00746	IMG0012	Vazir Hammam, Isfahan	01.05.2001	ADLE Kamran	24x36	Y
643	S216614	CT00746	IMG0013	Vazir Hammam, Isfahan	01.05.2001	ADLE Kamran	24x36	Y
644	S216615	CT00746	IMG0014	Vazir Hammam, Isfahan	01.05.2001	ADLE Kamran	24x36	Y
645	S216616	CT00746	IMG0015	Vazir Hammam, Isfahan	01.05.2001	ADLE Kamran	24x36	Y
646	S216617	CT00746	IMG0016	Vazir Hammam, Isfahan	01.05.2001	ADLE Kamran	24x36	Y
647	S216618	CT00746	IMG0017	Vazir Hammam, Isfahan	01.05.2001	ADLE Kamran	24x36	Y
648	S216619	CT00746	IMG0018	Vazir Hammam, Isfahan	01.05.2001	ADLE Kamran	24x36	Y
649	S216620	CT00746	IMG0019	Vazir Hammam, Isfahan	01.05.2001	ADLE Kamran	24x36	Y
650	S216621	CT00746	IMG0020	Vazir Hammam, Isfahan	01.05.2001	ADLE Kamran	24x36	Y

New Life for Old Structures

Various locations, Iran

List of Visual Materials

No	VM Num	CD Id	IMG Ord	VM Title	Date	Photographer	Format	Copyright
651	S216622	CT00747	IMG0001	Vazir Hammam, Isfahan	01.05.2001	ADLE Kamran	24x36	Y
652	S216623	CT00747	IMG0002	Vazir Hammam, Isfahan	01.05.2001	ADLE Kamran	24x36	Y
653	S216624	CT00747	IMG0003	Vazir Hammam, Isfahan	01.05.2001	ADLE Kamran	24x36	Y
654	S216625	CT00747	IMG0004	Vazir Hammam, Isfahan	01.05.2001	ADLE Kamran	24x36	Y
655	S216626	CT00747	IMG0005	Vazir Hammam, Isfahan	01.05.2001	ADLE Kamran	24x36	Y
656	S216627	CT00747	IMG0006	Vazir Hammam, Isfahan	01.05.2001	ADLE Kamran	24x36	Y
657	S216628	CT00747	IMG0007	Vazir Hammam, Isfahan	01.05.2001	ADLE Kamran	24x36	Y
658	S216629	CT00747	IMG0008	Vazir Hammam, Isfahan	01.05.2001	ADLE Kamran	24x36	Y
659	S216630	CT00747	IMG0009	Vazir Hammam, Isfahan	01.05.2001	ADLE Kamran	24x36	Y
660	S216631	CT00747	IMG0010	Vazir Hammam, Isfahan	01.05.2001	ADLE Kamran	24x36	Y
661	S216632			Vazir Hammam, Isfahan	01.05.2001	ADLE Kamran	24x36	Y
662	S216633			Vazir Hammam, Isfahan	01.05.2001	ADLE Kamran	24x36	Y
663	S216634			Vazir Hammam, Isfahan	01.05.2001	ADLE Kamran	24x36	Y
664	S216635			Vazir Hammam, Isfahan	01.05.2001	ADLE Kamran	24x36	Y
665	S216636			Vazir Hammam, Isfahan	01.05.2001	ADLE Kamran	24x36	Y
666	S216637			Vazir Hammam, Isfahan	01.05.2001	ADLE Kamran	24x36	Y
667	S216638			Vazir Hammam, Isfahan	01.05.2001	ADLE Kamran	24x36	Y
668	S216639			Vazir Hammam, Isfahan	01.05.2001	ADLE Kamran	24x36	Y
669	S216640			Vazir Hammam, Isfahan	01.05.2001	ADLE Kamran	24x36	Y
670	S216641			Vazir Hammam, Isfahan	01.05.2001	ADLE Kamran	24x36	Y
671	S216642			Vazir Hammam, Isfahan	01.05.2001	ADLE Kamran	24x36	Y
672	S216643			Vazir Hammam, Isfahan	01.05.2001	ADLE Kamran	24x36	Y
673	S216644			Vazir Hammam, Isfahan	01.05.2001	ADLE Kamran	24x36	Y
674	S216645			Vazir Hammam, Isfahan	01.05.2001	ADLE Kamran	24x36	Y
675	S216646			Vazir Hammam, Isfahan	01.05.2001	ADLE Kamran	24x36	Y
676	S216647			Vazir Hammam, Isfahan	01.05.2001	ADLE Kamran	24x36	Y
677	S216648			Vazir Hammam, Isfahan	01.05.2001	ADLE Kamran	24x36	Y
678	S216649			Vazir Hammam, Isfahan	01.05.2001	ADLE Kamran	24x36	Y
679	S216650			Vazir Hammam, Isfahan	01.05.2001	ADLE Kamran	24x36	Y
680	S216651			Vazir Hammam, Isfahan	01.05.2001	ADLE Kamran	24x36	Y
681	S216652			Vazir Hammam, Isfahan	01.05.2001	ADLE Kamran	24x36	Y
682	S216653			Vazir Hammam, Isfahan	01.05.2001	ADLE Kamran	24x36	Y
683	S216654			Vazir Hammam, Isfahan	01.05.2001	ADLE Kamran	24x36	Y
684	S216655			Vazir Hammam, Isfahan	01.05.2001	ADLE Kamran	24x36	Y
685	S216656			Vazir Hammam, Isfahan	01.05.2001	ADLE Kamran	24x36	Y
686	S216657			Vazir Hammam, Isfahan	01.05.2001	ADLE Kamran	24x36	Y
687	S216658			Vazir Hammam, Isfahan	01.05.2001	ADLE Kamran	24x36	Y
688	S216659			Vazir Hammam, Isfahan	01.05.2001	ADLE Kamran	24x36	Y
689	S216660			Vazir Hammam, Isfahan	01.05.2001	ADLE Kamran	24x36	Y
690	S216661			Vazir Hammam, Isfahan	01.05.2001	ADLE Kamran	24x36	Y
691	S216662			Vazir Hammam, Isfahan	01.05.2001	ADLE Kamran	24x36	Y
692	S216663			Vazir Hammam, Isfahan	01.05.2001	ADLE Kamran	24x36	Y
693	S216664			Vazir Hammam, Isfahan	01.05.2001	ADLE Kamran	24x36	Y
694	S216665			Vazir Hammam, Isfahan	01.05.2001	ADLE Kamran	24x36	Y
695	S216666			Vazir Hammam, Isfahan	01.05.2001	ADLE Kamran	24x36	Y
696	S216667			Vazir Hammam, Isfahan	01.05.2001	ADLE Kamran	24x36	Y
697	S216668			Vazir Hammam, Isfahan	01.05.2001	ADLE Kamran	24x36	Y
698	S216669			Vazir Hammam, Isfahan	01.05.2001	ADLE Kamran	24x36	Y
699	S216670			Vazir Hammam, Isfahan	01.05.2001	ADLE Kamran	24x36	Y
700	S216671			Vazir Hammam, Isfahan	01.05.2001	ADLE Kamran	24x36	Y

New Life for Old Structures

Various locations, Iran

List of Visual Materials

No	VM Num	CD Id	IMG Ord	VM Title	Date	Photographer	Format	Copyright
701	S216672			Vazir Hammam, Isfahan	01.05.2001	ADLE Kamran	24x36	Y
702	S216673			Vazir Hammam, Isfahan	01.05.2001	ADLE Kamran	24x36	Y
703	S216674			Vazir Hammam, Isfahan	01.05.2001	ADLE Kamran	24x36	Y
704	S216675			Vazir Hammam, Isfahan	01.05.2001	ADLE Kamran	24x36	Y
705	S216676			Vazir Hammam, Isfahan	01.05.2001	ADLE Kamran	24x36	Y
706	S216677			Vazir Hammam, Isfahan	01.05.2001	ADLE Kamran	24x36	Y
707	S216678			Vazir Hammam, Isfahan	01.05.2001	ADLE Kamran	24x36	Y
708	S216679			Vazir Hammam, Isfahan	01.05.2001	ADLE Kamran	24x36	Y
709	S216680			Vazir Hammam, Isfahan	01.05.2001	ADLE Kamran	24x36	Y
710	S216681			Vazir Hammam, Isfahan	01.05.2001	ADLE Kamran	24x36	Y
711	S216682			Vazir Hammam, Isfahan	01.05.2001	ADLE Kamran	24x36	Y
712	S216683			Vazir Hammam, Isfahan	01.05.2001	ADLE Kamran	24x36	Y
713	S216684			Vazir Hammam, Isfahan	01.05.2001	ADLE Kamran	24x36	Y
714	S216685			Vazir Hammam, Isfahan	01.05.2001	ADLE Kamran	24x36	Y
715	S216686			Vazir Hammam, Isfahan	01.05.2001	ADLE Kamran	24x36	Y
716	S216687			Vazir Hammam, Isfahan	01.05.2001	ADLE Kamran	24x36	Y
717	S216688			Vazir Hammam, Isfahan	01.05.2001	ADLE Kamran	24x36	Y
718	S216689			Vazir Hammam, Isfahan	01.05.2001	ADLE Kamran	24x36	Y
719	S216690			Vazir Hammam, Isfahan	01.05.2001	ADLE Kamran	24x36	Y
720	S216691			Vazir Hammam, Isfahan	01.05.2001	ADLE Kamran	24x36	Y
721	S216692			Moayed Alaai House, Yazd	01.05.2001	ADLE Kamran	24x36	Y
722	S216693			Moayed Alaai House, Yazd	01.05.2001	ADLE Kamran	24x36	Y
723	S216694			Moayed Alaai House, Yazd	01.05.2001	ADLE Kamran	24x36	Y
724	S216695			Moayed Alaai House, Yazd	01.05.2001	ADLE Kamran	24x36	Y
725	S216696			Moayed Alaai House, Yazd	01.05.2001	ADLE Kamran	24x36	Y
726	S216697			Moayed Alaai House, Yazd	01.05.2001	ADLE Kamran	24x36	Y
727	S216698			Moayed Alaai House, Yazd	01.05.2001	ADLE Kamran	24x36	Y
728	S216699			Moayed Alaai House, Yazd	01.05.2001	ADLE Kamran	24x36	Y
729	S216700			Moayed Alaai House, Yazd	01.05.2001	ADLE Kamran	24x36	Y
730	S216701			Moayed Alaai House, Yazd	01.05.2001	ADLE Kamran	24x36	Y
731	S216702			Moayed Alaai House, Yazd	01.05.2001	ADLE Kamran	24x36	Y
732	S216703			Moayed Alaai House, Yazd	01.05.2001	ADLE Kamran	24x36	Y
733	S216704			Moayed Alaai House, Yazd	01.05.2001	ADLE Kamran	24x36	Y
734	S216705			Moayed Alaai House, Yazd	01.05.2001	ADLE Kamran	24x36	Y
735	S216706			Moayed Alaai House, Yazd	01.05.2001	ADLE Kamran	24x36	Y
736	S216707			Moayed Alaai House, Yazd	01.05.2001	ADLE Kamran	24x36	Y
737	S216708			Moayed Alaai House, Yazd	01.05.2001	ADLE Kamran	24x36	Y
738	S216709			Moayed Alaai House, Yazd	01.05.2001	ADLE Kamran	24x36	Y
739	S216710			Moayed Alaai House, Yazd	01.05.2001	ADLE Kamran	24x36	Y
740	S216711			Moayed Alaai House, Yazd	01.05.2001	ADLE Kamran	24x36	Y
741	S216712			Moayed Alaai House, Yazd	01.05.2001	ADLE Kamran	24x36	Y
742	S216713			Moayed Alaai House, Yazd	01.05.2001	ADLE Kamran	24x36	Y
743	S216714			Moayed Alaai House, Yazd	01.05.2001	ADLE Kamran	24x36	Y
744	S216715			Moayed Alaai House, Yazd	01.05.2001	ADLE Kamran	24x36	Y
745	S216716			Moayed Alaai House, Yazd	01.05.2001	ADLE Kamran	24x36	Y
746	S216717			Moayed Alaai House, Yazd	01.05.2001	ADLE Kamran	24x36	Y
747	S216718			Moayed Alaai House, Yazd	01.05.2001	ADLE Kamran	24x36	Y
748	S216719			Moayed Alaai House, Yazd	01.05.2001	ADLE Kamran	24x36	Y
749	S216720			Moayed Alaai House, Yazd	01.05.2001	ADLE Kamran	24x36	Y
750	S216721			Moayed Alaai House, Yazd	01.05.2001	ADLE Kamran	24x36	Y

New Life for Old Structures

Various locations, Iran

List of Visual Materials

No	VM Num	CD Id	IMG Ord	VM Title	Date	Photographer	Format	Copyright
751	S216722			Moayed Alaai House, Yazd	01.05.2001	ADLE Kamran	24x36	Y
752	S216723			Moayed Alaai House, Yazd	01.05.2001	ADLE Kamran	24x36	Y
753	S216724			Moayed Alaai House, Yazd	01.05.2001	ADLE Kamran	24x36	Y
754	S216725			Moayed Alaai House, Yazd	01.05.2001	ADLE Kamran	24x36	Y
755	S216726			Moayed Alaai House, Yazd	01.05.2001	ADLE Kamran	24x36	Y
756	S216727			Moayed Alaai House, Yazd	01.05.2001	ADLE Kamran	24x36	Y
757	S216728			Moayed Alaai House, Yazd	01.05.2001	ADLE Kamran	24x36	Y
758	S216729			Moayed Alaai House, Yazd	01.05.2001	ADLE Kamran	24x36	Y
759	S216730			Moayed Alaai House, Yazd	01.05.2001	ADLE Kamran	24x36	Y
760	S216731			Moayed Alaai House, Yazd	01.05.2001	ADLE Kamran	24x36	Y
761	S216732			Moayed Alaai House, Yazd	01.05.2001	ADLE Kamran	24x36	Y
762	S216733			Moayed Alaai House, Yazd	01.05.2001	ADLE Kamran	24x36	Y
763	S216734			Moayed Alaai House, Yazd	01.05.2001	ADLE Kamran	24x36	Y
764	S216735			Moayed Alaai House, Yazd	01.05.2001	ADLE Kamran	24x36	Y
765	S216736			Moayed Alaai House, Yazd	01.05.2001	ADLE Kamran	24x36	Y
766	S216737			Moayed Alaai House, Yazd	01.05.2001	ADLE Kamran	24x36	Y
767	S216738			Moayed Alaai House, Yazd	01.05.2001	ADLE Kamran	24x36	Y
768	S216739			Moayed Alaai House, Yazd	01.05.2001	ADLE Kamran	24x36	Y
769	S216740			Moayed Alaai House, Yazd	01.05.2001	ADLE Kamran	24x36	Y
770	S216741			Moayed Alaai House, Yazd	01.05.2001	ADLE Kamran	24x36	Y
771	S216742			Moayed Alaai House, Yazd	01.05.2001	ADLE Kamran	24x36	Y
772	S216743			Moayed Alaai House, Yazd	01.05.2001	ADLE Kamran	24x36	Y
773	S216744			Moayed Alaai House, Yazd	01.05.2001	ADLE Kamran	24x36	Y
774	S216745			Moayed Alaai House, Yazd	01.05.2001	ADLE Kamran	24x36	Y
775	S216746			Moayed Alaai House, Yazd	01.05.2001	ADLE Kamran	24x36	Y
776	S216747			Moayed Alaai House, Yazd	01.05.2001	ADLE Kamran	24x36	Y
777	S216748			Moayed Alaai House, Yazd	01.05.2001	ADLE Kamran	24x36	Y
778	S216749			Moayed Alaai House, Yazd	01.05.2001	ADLE Kamran	24x36	Y
779	S216750			Moayed Alaai House, Yazd	01.05.2001	ADLE Kamran	24x36	Y
780	S216751			Moayed Alaai House, Yazd	01.05.2001	ADLE Kamran	24x36	Y
781	S216752			Moayed Alaai House, Yazd	01.05.2001	ADLE Kamran	24x36	Y
782	S216753			Moayed Alaai House, Yazd	01.05.2001	ADLE Kamran	24x36	Y
783	S216754			Moayed Alaai House, Yazd	01.05.2001	ADLE Kamran	24x36	Y
784	S216755			Moayed Alaai House, Yazd	01.05.2001	ADLE Kamran	24x36	Y
785	S216756			Moayed Alaai House, Yazd	01.05.2001	ADLE Kamran	24x36	Y
786	S216757			Moayed Alaai House, Yazd	01.05.2001	ADLE Kamran	24x36	Y
787	S216758			Moayed Alaai House, Yazd	01.05.2001	ADLE Kamran	24x36	Y
788	S216759			Moayed Alaai House, Yazd	01.05.2001	ADLE Kamran	24x36	Y
789	S216760			Moayed Alaai House, Yazd	01.05.2001	ADLE Kamran	24x36	Y
790	S216761			Moayed Alaai House, Yazd	01.05.2001	ADLE Kamran	24x36	Y
791	S216762			Moayed Alaai House, Yazd	01.05.2001	ADLE Kamran	24x36	Y
792	S216763			Moayed Alaai House, Yazd	01.05.2001	ADLE Kamran	24x36	Y
793	S216764			Moayed Alaai House, Yazd	01.05.2001	ADLE Kamran	24x36	Y
794	S216765			Moayed Alaai House, Yazd	01.05.2001	ADLE Kamran	24x36	Y
795	S216766			Moayed Alaai House, Yazd	01.05.2001	ADLE Kamran	24x36	Y
796	S216767			Moayed Alaai House, Yazd	01.05.2001	ADLE Kamran	24x36	Y
797	S216768			Moayed Alaai House, Yazd	01.05.2001	ADLE Kamran	24x36	Y
798	S216769			Moayed Alaai House, Yazd	01.05.2001	ADLE Kamran	24x36	Y
799	S216770			Moayed Alaai House, Yazd	01.05.2001	ADLE Kamran	24x36	Y
800	S216771			Moayed Alaai House, Yazd	01.05.2001	ADLE Kamran	24x36	Y

New Life for Old Structures

Various locations, Iran

List of Visual Materials

No	VM Num	CD Id	IMG Ord	VM Title	Date	Photographer	Format	Copyright
801	S216772			Moayed Alaai House, Yazd	01.05.2001	ADLE Kamran	24x36	Y
802	S216773			Moayed Alaai House, Yazd	01.05.2001	ADLE Kamran	24x36	Y
803	S216774			Moayed Alaai House, Yazd	01.05.2001	ADLE Kamran	24x36	Y
804	S216775			Moayed Alaai House, Yazd	01.05.2001	ADLE Kamran	24x36	Y
805	S216776			Moayed Alaai House, Yazd	01.05.2001	ADLE Kamran	24x36	Y
806	S216777			Moayed Alaai House, Yazd	01.05.2001	ADLE Kamran	24x36	Y
807	S216778			Moayed Alaai House, Yazd	01.05.2001	ADLE Kamran	24x36	Y
808	S216779			Moayed Alaai House, Yazd	01.05.2001	ADLE Kamran	24x36	Y
809	S216780			Moayed Alaai House, Yazd	01.05.2001	ADLE Kamran	24x36	Y
810	S216781			Moayed Alaai House, Yazd	01.05.2001	ADLE Kamran	24x36	Y
811	S216782			Moayed Alaai House, Yazd	01.05.2001	ADLE Kamran	24x36	Y
812	S216783			Moayed Alaai House, Yazd	01.05.2001	ADLE Kamran	24x36	Y
813	S216784			Moayed Alaai House, Yazd	01.05.2001	ADLE Kamran	24x36	Y
814	S216785			Moayed Alaai House, Yazd	01.05.2001	ADLE Kamran	24x36	Y
815	S216786			Moayed Alaai House, Yazd	01.05.2001	ADLE Kamran	24x36	Y
816	S216787			Moayed Alaai House, Yazd	01.05.2001	ADLE Kamran	24x36	Y
817	S216788			Moayed Alaai House, Yazd	01.05.2001	ADLE Kamran	24x36	Y
818	S216789			Moayed Alaai House, Yazd	01.05.2001	ADLE Kamran	24x36	Y
819	S216790			Moayed Alaai House, Yazd	01.05.2001	ADLE Kamran	24x36	Y
820	S216791			Moayed Alaai House, Yazd	01.05.2001	ADLE Kamran	24x36	Y
821	S216792			Moayed Alaai House, Yazd	01.05.2001	ADLE Kamran	24x36	Y
822	S216793			Moayed Alaai House, Yazd	01.05.2001	ADLE Kamran	24x36	Y
823	S216794			Moayed Alaai House, Yazd	01.05.2001	ADLE Kamran	24x36	Y
824	S216795			Moayed Alaai House, Yazd	01.05.2001	ADLE Kamran	24x36	Y
825	S216796			Moayed Alaai House, Yazd	01.05.2001	ADLE Kamran	24x36	Y
826	S216797			Moayed Alaai House, Yazd	01.05.2001	ADLE Kamran	24x36	Y
827	S216798			Moayed Alaai House, Yazd	01.05.2001	ADLE Kamran	24x36	Y
828	S216799			Mojtahedzadeh House, Isfahan	01.05.2001	ADLE Kamran	24x36	Y
829	S216800			Mojtahedzadeh House, Isfahan	01.05.2001	ADLE Kamran	24x36	Y
830	S216801			Mojtahedzadeh House, Isfahan	01.05.2001	ADLE Kamran	24x36	Y
831	S216802			Mojtahedzadeh House, Isfahan	01.05.2001	ADLE Kamran	24x36	Y
832	S216803			Mojtahedzadeh House, Isfahan	01.05.2001	ADLE Kamran	24x36	Y
833	S216804			Mojtahedzadeh House, Isfahan	01.05.2001	ADLE Kamran	24x36	Y
834	S216805			Mojtahedzadeh House, Isfahan	01.05.2001	ADLE Kamran	24x36	Y
835	S216806			Mojtahedzadeh House, Isfahan	01.05.2001	ADLE Kamran	24x36	Y
836	S216807			Mojtahedzadeh House, Isfahan	01.05.2001	ADLE Kamran	24x36	Y
837	S216808			Mojtahedzadeh House, Isfahan	01.05.2001	ADLE Kamran	24x36	Y
838	S216809			Mojtahedzadeh House, Isfahan	01.05.2001	ADLE Kamran	24x36	Y
839	S216810			Mojtahedzadeh House, Isfahan	01.05.2001	ADLE Kamran	24x36	Y
840	S216811			Mojtahedzadeh House, Isfahan	01.05.2001	ADLE Kamran	24x36	Y
841	S216812			Mojtahedzadeh House, Isfahan	01.05.2001	ADLE Kamran	24x36	Y
842	S216813			Mojtahedzadeh House, Isfahan	01.05.2001	ADLE Kamran	24x36	Y
843	S216814			Mojtahedzadeh House, Isfahan	01.05.2001	ADLE Kamran	24x36	Y
844	S216815			Mojtahedzadeh House, Isfahan	01.05.2001	ADLE Kamran	24x36	Y
845	S216816			Mojtahedzadeh House, Isfahan	01.05.2001	ADLE Kamran	24x36	Y
846	S216817			Mojtahedzadeh House, Isfahan	01.05.2001	ADLE Kamran	24x36	Y
847	S216818			Mojtahedzadeh House, Isfahan	01.05.2001	ADLE Kamran	24x36	Y
848	S216819			Mojtahedzadeh House, Isfahan	01.05.2001	ADLE Kamran	24x36	Y
849	S216820			Mojtahedzadeh House, Isfahan	01.05.2001	ADLE Kamran	24x36	Y
850	S216821			Mojtahedzadeh House, Isfahan	01.05.2001	ADLE Kamran	24x36	Y

New Life for Old Structures

Various locations, Iran

List of Visual Materials

No	VM Num	CD Id	IMG Ord	VM Title	Date	Photographer	Format	Copyright
851	S216822			Mojtahedzadeh House, Isfahan	01.05.2001	ADLE Kamran	24x36	Y
852	S216823			Mojtahedzadeh House, Isfahan	01.05.2001	ADLE Kamran	24x36	Y
853	S216824			Mojtahedzadeh House, Isfahan	01.05.2001	ADLE Kamran	24x36	Y
854	S216825			Mojtahedzadeh House, Isfahan	01.05.2001	ADLE Kamran	24x36	Y
855	S216826			Mojtahedzadeh House, Isfahan	01.05.2001	ADLE Kamran	24x36	Y
856	S216827			Mojtahedzadeh House, Isfahan	01.05.2001	ADLE Kamran	24x36	Y
857	S216828			Mojtahedzadeh House, Isfahan	01.05.2001	ADLE Kamran	24x36	Y
858	S216829			Mojtahedzadeh House, Isfahan	01.05.2001	ADLE Kamran	24x36	Y
859	S216830			Mojtahedzadeh House, Isfahan	01.05.2001	ADLE Kamran	24x36	Y
860	S216831			Mojtahedzadeh House, Isfahan	01.05.2001	ADLE Kamran	24x36	Y
861	S216832			Mojtahedzadeh House, Isfahan	01.05.2001	ADLE Kamran	24x36	Y
862	S216833			Mojtahedzadeh House, Isfahan	01.05.2001	ADLE Kamran	24x36	Y
863	S216834			Mojtahedzadeh House, Isfahan	01.05.2001	ADLE Kamran	24x36	Y
864	S216835			Mojtahedzadeh House, Isfahan	01.05.2001	ADLE Kamran	24x36	Y
865	S216836			Mojtahedzadeh House, Isfahan	01.05.2001	ADLE Kamran	24x36	Y
866	S216837			Mojtahedzadeh House, Isfahan	01.05.2001	ADLE Kamran	24x36	Y
867	S216838			Mojtahedzadeh House, Isfahan	01.05.2001	ADLE Kamran	24x36	Y
868	S216839			Mojtahedzadeh House, Isfahan	01.05.2001	ADLE Kamran	24x36	Y
869	S216840			Mojtahedzadeh House, Isfahan	01.05.2001	ADLE Kamran	24x36	Y
870	S216841			Mojtahedzadeh House, Isfahan	01.05.2001	ADLE Kamran	24x36	Y
871	S216842			Mojtahedzadeh House, Isfahan	01.05.2001	ADLE Kamran	24x36	Y
872	S216843			Mojtahedzadeh House, Isfahan	01.05.2001	ADLE Kamran	24x36	Y
873	S216844			Mojtahedzadeh House, Isfahan	01.05.2001	ADLE Kamran	24x36	Y
874	S216845			Mojtahedzadeh House, Isfahan	01.05.2001	ADLE Kamran	24x36	Y
875	S216846			Mojtahedzadeh House, Isfahan	01.05.2001	ADLE Kamran	24x36	Y
876	S216847			Mojtahedzadeh House, Isfahan	01.05.2001	ADLE Kamran	24x36	Y
877	S216848			Mojtahedzadeh House, Isfahan	01.05.2001	ADLE Kamran	24x36	Y
878	S216849			Mojtahedzadeh House, Isfahan	01.05.2001	ADLE Kamran	24x36	Y
879	S216850			Mojtahedzadeh House, Isfahan	01.05.2001	ADLE Kamran	24x36	Y
880	S216851			Mojtahedzadeh House, Isfahan	01.05.2001	ADLE Kamran	24x36	Y
881	S216852			Mojtahedzadeh House, Isfahan	01.05.2001	ADLE Kamran	24x36	Y
882	S216853			Mojtahedzadeh House, Isfahan	01.05.2001	ADLE Kamran	24x36	Y
883	S216854			Mojtahedzadeh House, Isfahan	01.05.2001	ADLE Kamran	24x36	Y
884	S216855			Mojtahedzadeh House, Isfahan	01.05.2001	ADLE Kamran	24x36	Y
885	S216856			Mojtahedzadeh House, Isfahan	01.05.2001	ADLE Kamran	24x36	Y
886	S216857			Mojtahedzadeh House, Isfahan	01.05.2001	ADLE Kamran	24x36	Y
887	S216858			Mojtahedzadeh House, Isfahan	01.05.2001	ADLE Kamran	24x36	Y
888	S216859			Mojtahedzadeh House, Isfahan	01.05.2001	ADLE Kamran	24x36	Y
889	S216860			Mojtahedzadeh House, Isfahan	01.05.2001	ADLE Kamran	24x36	Y
890	S216861			Mojtahedzadeh House, Isfahan	01.05.2001	ADLE Kamran	24x36	Y
891	S216862			Mojtahedzadeh House, Isfahan	01.05.2001	ADLE Kamran	24x36	Y
892	S216863			Mojtahedzadeh House, Isfahan	01.05.2001	ADLE Kamran	24x36	Y
893	S216864			Mojtahedzadeh House, Isfahan	01.05.2001	ADLE Kamran	24x36	Y
894	S216865			Mojtahedzadeh House, Isfahan	01.05.2001	ADLE Kamran	24x36	Y
895	S216866			Mojtahedzadeh House, Isfahan	01.05.2001	ADLE Kamran	24x36	Y
896	S216867			Mojtahedzadeh House, Isfahan	01.05.2001	ADLE Kamran	24x36	Y
897	S216868			Mojtahedzadeh House, Isfahan	01.05.2001	ADLE Kamran	24x36	Y
898	S216869			Mojtahedzadeh House, Isfahan	01.05.2001	ADLE Kamran	24x36	Y
899	S216870			Mojtahedzadeh House, Isfahan	01.05.2001	ADLE Kamran	24x36	Y
900	S216871			Mojtahedzadeh House, Isfahan	01.05.2001	ADLE Kamran	24x36	Y

New Life for Old Structures

Various locations, Iran

List of Visual Materials

No	VM Num	CD Id	IMG Ord	VM Title	Date	Photographer	Format	Copyright
901	S216872			Mojtahedzadeh House, Isfahan	01.05.2001	ADLE Kamran	24x36	Y
902	S216873			Mojtahedzadeh House, Isfahan	01.05.2001	ADLE Kamran	24x36	Y
903	S216874			Mojtahedzadeh House, Isfahan	01.05.2001	ADLE Kamran	24x36	Y
904	S216875			Mojtahedzadeh House, Isfahan	01.05.2001	ADLE Kamran	24x36	Y
905	S216876			Mojtahedzadeh House, Isfahan	01.05.2001	ADLE Kamran	24x36	Y
906	S216877			Mojtahedzadeh House, Isfahan	01.05.2001	ADLE Kamran	24x36	Y
907	S216878			Mojtahedzadeh House, Isfahan	01.05.2001	ADLE Kamran	24x36	Y
908	S216879			Mojtahedzadeh House, Isfahan	01.05.2001	ADLE Kamran	24x36	Y
909	S216880			Mojtahedzadeh House, Isfahan	01.05.2001	ADLE Kamran	24x36	Y
910	S216881			Mojtahedzadeh House, Isfahan	01.05.2001	ADLE Kamran	24x36	Y
911	S216882			Mojtahedzadeh House, Isfahan	01.05.2001	ADLE Kamran	6x6	Y
912	S216883			Mojtahedzadeh House, Isfahan	01.05.2001	ADLE Kamran	6x6	Y
913	S216884			Mojtahedzadeh House, Isfahan	01.05.2001	ADLE Kamran	6x6	Y
914	S216885			Mojtahedzadeh House, Isfahan	01.05.2001	ADLE Kamran	6x6	Y
915	S216886			Mojtahedzadeh House, Isfahan	01.05.2001	ADLE Kamran	6x6	Y
916	S216887			Mojtahedzadeh House, Isfahan	01.05.2001	ADLE Kamran	6x6	Y
917	S216888			Mojtahedzadeh House, Isfahan	01.05.2001	ADLE Kamran	6x6	Y
918	S216889			Mojtahedzadeh House, Isfahan	01.05.2001	ADLE Kamran	6x6	Y
919	S216890			Mojtahedzadeh House, Isfahan	01.05.2001	ADLE Kamran	6x6	Y
920	S216891			Mojtahedzadeh House, Isfahan	01.05.2001	ADLE Kamran	6x6	Y
921	S216892			Mojtahedzadeh House, Isfahan	01.05.2001	ADLE Kamran	6x6	Y
922	S216893			Mojtahedzadeh House, Isfahan	01.05.2001	ADLE Kamran	6x6	Y
923	S216894			Mojtahedzadeh House, Isfahan	01.05.2001	ADLE Kamran	6x6	Y
924	S216895			Mojtahedzadeh House, Isfahan	01.05.2001	ADLE Kamran	6x6	Y
925	S216896			Mojtahedzadeh House, Isfahan	01.05.2001	ADLE Kamran	6x6	Y
926	S216897			Moayed Alaai House, Yazd	01.05.2001	ADLE Kamran	6x6	Y
927	S216898			Moayed Alaai House, Yazd	01.05.2001	ADLE Kamran	6x6	Y
928	S216899			Moayed Alaai House, Yazd	01.05.2001	ADLE Kamran	6x6	Y
929	S216900			Moayed Alaai House, Yazd	01.05.2001	ADLE Kamran	6x6	Y
930	S216901			Moayed Alaai House, Yazd	01.05.2001	ADLE Kamran	6x6	Y
931	S216902			Moayed Alaai House, Yazd	01.05.2001	ADLE Kamran	6x6	Y
932	S216903			Moayed Alaai House, Yazd	01.05.2001	ADLE Kamran	6x6	Y
933	S216904			Moayed Alaai House, Yazd	01.05.2001	ADLE Kamran	6x6	Y
934	S216905			Moayed Alaai House, Yazd	01.05.2001	ADLE Kamran	6x6	Y
935	S216906			Moayed Alaai House, Yazd	01.05.2001	ADLE Kamran	6x6	Y
936	S216907			Moayed Alaai House, Yazd	01.05.2001	ADLE Kamran	6x6	Y
937	S216908			Vazir Hammam, Isfahan	01.05.2001	ADLE Kamran	6x6	Y
938	S216909			Vazir Hammam, Isfahan	01.05.2001	ADLE Kamran	6x6	Y
939	S216910			Vazir Hammam, Isfahan	01.05.2001	ADLE Kamran	6x6	Y
940	S216911			Vazir Hammam, Isfahan	01.05.2001	ADLE Kamran	6x6	Y
941	S216912			Vazir Hammam, Isfahan	01.05.2001	ADLE Kamran	6x6	Y
942	S216913			Vazir Hammam, Isfahan	01.05.2001	ADLE Kamran	6x6	Y
943	S216914			Vazir Hammam, Isfahan	01.05.2001	ADLE Kamran	6x6	Y
944	S216915			Vazir Hammam, Isfahan	01.05.2001	ADLE Kamran	6x6	Y
945	S216916			Vazir Hammam, Isfahan	01.05.2001	ADLE Kamran	6x6	Y
946	S216917			Vazir Hammam, Isfahan	01.05.2001	ADLE Kamran	6x6	Y
947	S216918			Vazir Hammam, Isfahan	01.05.2001	ADLE Kamran	6x6	Y
948	S216919			Vazir Hammam, Isfahan	01.05.2001	ADLE Kamran	6x6	Y
949	S216920			Vazir Hammam, Isfahan	01.05.2001	ADLE Kamran	6x6	Y
950	S216921			Vazir Hammam, Isfahan	01.05.2001	ADLE Kamran	6x6	Y

New Life for Old Structures

Various locations, Iran

List of Visual Materials

No	VM Num	CD Id	IMG Ord	VM Title	Date	Photographer	Format	Copyright
951	S216922			Ghodssieh School, Isfahan	01.05.2001	ADLE Kamran	6x6	Y
952	S216923			Ghodssieh School, Isfahan	01.05.2001	ADLE Kamran	6x6	Y
953	S216924			Ghodssieh School, Isfahan	01.05.2001	ADLE Kamran	6x6	Y
954	S216925			Ghodssieh School, Isfahan	01.05.2001	ADLE Kamran	6x6	Y
955	S216926			Ghodssieh School, Isfahan	01.05.2001	ADLE Kamran	6x6	Y
956	S216927			Ghodssieh School, Isfahan	01.05.2001	ADLE Kamran	6x6	Y
957	S216928			Ghodssieh School, Isfahan	01.05.2001	ADLE Kamran	6x6	Y
958	S216929			Ghodssieh School, Isfahan	01.05.2001	ADLE Kamran	6x6	Y
959	S216930			Ghodssieh School, Isfahan	01.05.2001	ADLE Kamran	6x6	Y
960	S216931			Ghodssieh School, Isfahan	01.05.2001	ADLE Kamran	6x6	Y
961	S216932			Ghodssieh School, Isfahan	01.05.2001	ADLE Kamran	6x6	Y
962	S216933			Aalam House, Isfahan	01.05.2001	ADLE Kamran	6x6	Y
963	S216934			Aalam House, Isfahan	01.05.2001	ADLE Kamran	6x6	Y
964	S216935			Aalam House, Isfahan	01.05.2001	ADLE Kamran	6x6	Y
965	S216936			Aalam House, Isfahan	01.05.2001	ADLE Kamran	6x6	Y
966	S216937			Aalam House, Isfahan	01.05.2001	ADLE Kamran	6x6	Y
967	S216938			Aalam House, Isfahan	01.05.2001	ADLE Kamran	6x6	Y
968	S216939			Aalam House, Isfahan	01.05.2001	ADLE Kamran	6x6	Y
969	S216940			Aalam House, Isfahan	01.05.2001	ADLE Kamran	6x6	Y
970	S216941			Aalam House, Isfahan	01.05.2001	ADLE Kamran	6x6	Y
971	S216942			Aalam House, Isfahan	01.05.2001	ADLE Kamran	6x6	Y
972	S216943			Aalam House, Isfahan	01.05.2001	ADLE Kamran	6x6	Y
973	S216944			Aalam House, Isfahan	01.05.2001	ADLE Kamran	6x6	Y
974	S216945			Aalam House, Isfahan	01.05.2001	ADLE Kamran	6x6	Y
975	S216946			Aalam House, Isfahan	01.05.2001	ADLE Kamran	6x6	Y
976	S216947			Aalam House, Isfahan	01.05.2001	ADLE Kamran	6x6	Y
977	S216948			Aalam House, Isfahan	01.05.2001	ADLE Kamran	6x6	Y
978	S216949			Aalam House, Isfahan	01.05.2001	ADLE Kamran	6x6	Y
979	S216950			Aalam House, Isfahan	01.05.2001	ADLE Kamran	6x6	Y
980	S216951			Aalam House, Isfahan	01.05.2001	ADLE Kamran	6x6	Y
981	S216952			Aalam House, Isfahan	01.05.2001	ADLE Kamran	6x6	Y
982	S216953			Aalam House, Isfahan	01.05.2001	ADLE Kamran	6x6	Y
983	S216954			Aalam House, Isfahan	01.05.2001	ADLE Kamran	6x6	Y
984	S216955			Aalam House, Isfahan	01.05.2001	ADLE Kamran	6x6	Y
985	S216956			Aalam House, Isfahan	01.05.2001	ADLE Kamran	6x6	Y
986	S216957			Nilforooshan House, Isfahan	01.05.2001	ADLE Kamran	6x6	Y
987	S216958			Nilforooshan House, Isfahan	01.05.2001	ADLE Kamran	6x6	Y
988	S216959			Nilforooshan House, Isfahan	01.05.2001	ADLE Kamran	6x6	Y
989	S216960			Nilforooshan House, Isfahan	01.05.2001	ADLE Kamran	6x6	Y
990	S216961			Nilforooshan House, Isfahan	01.05.2001	ADLE Kamran	6x6	Y
991	S216962			Nilforooshan House, Isfahan	01.05.2001	ADLE Kamran	6x6	Y
992	S216963			Nilforooshan House, Isfahan	01.05.2001	ADLE Kamran	6x6	Y
993	S216964			Nilforooshan House, Isfahan	01.05.2001	ADLE Kamran	6x6	Y
994	S216965			Nazem-o-toja Hosseini, Yazd	01.05.2001	ADLE Kamran	6x6	Y
995	S216966			Nazem-o-toja Hosseini, Yazd	01.05.2001	ADLE Kamran	6x6	Y
996	S216967			Nazem-o-toja Hosseini, Yazd	01.05.2001	ADLE Kamran	6x6	Y
997	S216968			Nazem-o-toja Hosseini, Yazd	01.05.2001	ADLE Kamran	6x6	Y
998	S216969			Nazem-o-toja Hosseini, Yazd	01.05.2001	ADLE Kamran	6x6	Y
999	S216970			Nazem-o-toja Hosseini, Yazd	01.05.2001	ADLE Kamran	6x6	Y
1000	S216971			Nazem-o-toja Hosseini, Yazd	01.05.2001	ADLE Kamran	6x6	Y

New Life for Old Structures

Various locations, Iran

List of Visual Materials

<u>No</u>	<u>VM Num</u>	<u>CD Id</u>	<u>IMG Ord</u>	<u>VM Title</u>	<u>Date</u>	<u>Photographer</u>	<u>Format</u>	<u>Copyright</u>
1001	S216972			Nazem-o-toja Hosseinih, Yazd	01.05.2001	ADLE Kamran	6x6	Y
1002	S216973			Nazem-o-toja Hosseinih, Yazd	01.05.2001	ADLE Kamran	6x6	Y
1003	S216974			Nazem-o-toja Hosseinih, Yazd	01.05.2001	ADLE Kamran	6x6	Y
1004	S216975			Nazem-o-toja Hosseinih, Yazd	01.05.2001	ADLE Kamran	6x6	Y
1005	S216976			Nazem-o-toja Hosseinih, Yazd	01.05.2001	ADLE Kamran	6x6	Y
1006	S216977			Khan Hamam, Yazd	01.05.2001	ADLE Kamran	6x6	Y
1007	S216978			Khan Hamam, Yazd	01.05.2001	ADLE Kamran	6x6	Y
1008	S216979			Khan Hamam, Yazd	01.05.2001	ADLE Kamran	6x6	Y
1009	S216980			Khan Hamam, Yazd	01.05.2001	ADLE Kamran	6x6	Y
1010	S216981			Khan Hamam, Yazd	01.05.2001	ADLE Kamran	6x6	Y
1011	S216982			Khan Hamam, Yazd	01.05.2001	ADLE Kamran	6x6	Y
1012	S216983			Khan Hamam, Yazd	01.05.2001	ADLE Kamran	6x6	Y
1013	S216984			Khan Hamam, Yazd	01.05.2001	ADLE Kamran	6x6	Y
1014	S216985			Khan Hamam, Yazd	01.05.2001	ADLE Kamran	6x6	Y
1015	S216986			Khan Hamam, Yazd	01.05.2001	ADLE Kamran	6x6	Y
1016	S216987			Khan Hamam, Yazd	01.05.2001	ADLE Kamran	6x6	Y
1017	S216988			Khan Hamam, Yazd	01.05.2001	ADLE Kamran	6x6	Y
1018	S216989			Khan Hamam, Yazd	01.05.2001	ADLE Kamran	6x6	Y
1019	S216990			Khan Hamam, Yazd	01.05.2001	ADLE Kamran	6x6	Y
1020	S216991			Khan Hamam, Yazd	01.05.2001	ADLE Kamran	6x6	Y
1021	S216992			Khan Hamam, Yazd	01.05.2001	ADLE Kamran	6x6	Y
1022	S216993			Khan Hamam, Yazd	01.05.2001	ADLE Kamran	6x6	Y
1023	S216994			Khan Hamam, Yazd	01.05.2001	ADLE Kamran	6x6	Y
1024	S216995			Khan Hamam, Yazd	01.05.2001	ADLE Kamran	6x6	Y
1025	S216996			Khan Hamam, Yazd	01.05.2001	ADLE Kamran	6x6	Y
1026	S216997			Khan Hamam, Yazd	01.05.2001	ADLE Kamran	6x6	Y
1027	S216998			Khan Hamam, Yazd	01.05.2001	ADLE Kamran	6x6	Y
1028	S216999			Khan Hamam, Yazd	01.05.2001	ADLE Kamran	6x6	Y
1029	S217000			Khan Hamam, Yazd	01.05.2001	ADLE Kamran	6x6	Y
1030	S217001			Khan Hamam, Yazd	01.05.2001	ADLE Kamran	6x6	Y
1031	S217002			Khan Hamam, Yazd	01.05.2001	ADLE Kamran	6x6	Y
1032	S217003			Khan Hamam, Yazd	01.05.2001	ADLE Kamran	6x6	Y
1033	S217004			Khan Hamam, Yazd	01.05.2001	ADLE Kamran	6x6	Y
1034	S217005			Khan Hamam, Yazd	01.05.2001	ADLE Kamran	6x6	Y
1035	S217006			Khan Hamam, Yazd	01.05.2001	ADLE Kamran	6x6	Y
1036	S217419			Ghodssieh School, Isfahan	01.05.2001	ADLE Kamran	24x36	Y
1037	S217420			Ghodssieh School, Isfahan	01.05.2001	ADLE Kamran	24x36	Y
1038	S217421			Ghodssieh School, Isfahan	01.05.2001	ADLE Kamran	24x36	Y
1039	S217422			Ghodssieh School, Isfahan	01.05.2001	ADLE Kamran	24x36	Y
1040	S217423			Ghodssieh School, Isfahan	01.05.2001	ADLE Kamran	24x36	Y
1041	S217424			Ghodssieh School, Isfahan	01.05.2001	ADLE Kamran	24x36	Y
1042	S217425			Ghodssieh School, Isfahan	01.05.2001	ADLE Kamran	24x36	Y