



THE UNIVERSITY  
of EDINBURGH



## MSc in Applied Psychology for Children and Young People

### Introduction

The MSc in Applied Psychology for Children and Young People is a taught Masters course which aims to train psychology graduates in the range of skills and competencies essential for the delivery of tier two psychological assessments and interventions in a range of services for children, young people and their families. The core purpose and philosophy of the programme is that trainees should be competent practitioners in applied psychology for children, young people and families. In addition to the essential elements for applied psychologists in health (e.g. assessment and formulation, and evaluation) and Child and Adolescent Mental Health professionals (e.g. recognition of Child Abuse, developmental impairments and delays), there is a particular focus on the Early Years and Early Intervention across a variety of settings. There is also a strong emphasis on parenting and supporting parents through evidence-based models of parent-focused intervention.

The key areas covered by the syllabus are:

- Professional Context and Clinical Management
- Assessment and Formulation
- Child and Adolescent Development
- Early Years and Early Intervention
- Promotion of Mental Health and Emotional Well-being
- Psychological Intervention and Structured Treatment Approaches
- Evaluation and Research

### Programme Structure

This is a one year full-time taught programme. The distinguishing feature of the MSc is its collaboration between the University of Edinburgh, NHS Greater Glasgow and Clyde, key NHS stakeholders and clinical psychologists working within several NHS Health Board areas, and Child and Adolescent Mental Health services (CAMHS).

The academic basis for the programme is governed by current models of developmental psychology and developmental psychopathology in order to establish a solid theoretical foundation and genuine theory practice links. There is a strong emphasis on evidence-based practice and effective treatment models for this client group. This includes individual, family and group approaches for children, young people and parents. A substantial proportion of teaching is workshop based and trainees are encouraged to develop clinical decision-making skills as well as skills necessary for carrying out psychological interventions with children, young people and families.

The MSc is supported by several of the territorial Health Boards in Scotland who provide training placements and supervisors for the trainees. Over the course of the training programme, trainees will undertake a clinical placement in an NHS CAMH service. The clinical experience gained on placement facilitates the linkage of psychological theory to practice and fosters development of professional skills necessary for post-qualification practice.

The Quality Assurance Agency (QAA) for Higher Education in Scotland produced a benchmark document that articulates the standards and competences expected at Doctoral and Masters levels for Chartered Clinical Psychologists and Clinical Associates respectively. This programme aims to train students to the level of Clinical Associate as outlined in the benchmark document.

### Background

The MSc was developed in response to a NHS Education for Scotland (NES) initiative following the recommendations of the Scottish Needs Assessment Report on Child and Adolescent Mental Health (2003) and the workforce planning exercise for Scottish CAMH Services. In line with the Scottish Needs Assessment Report on Child and Adolescent Mental Health (2003) and the Mental Health of Children and Young People: A Framework for Promotion, Prevention and Care (2005); this programme aims to boost the provision of psychological healthcare for children and young people in universal as well as specialised service settings.

Award of the MSc confers eligibility for the post of Clinical Associate in Applied Psychology in the NHS. There is no guarantee of employment following training, however, previous graduates are undertaking a number of roles within and out with NHS settings. These include Clinical Associate posts, Primary Mental Health worker, School Mental Health Link worker, and Voluntary Sector project worker with children and young people. Within the NHS further career development is available through continuing professional development and progression, according to the competencies acquired, as outlined in Agenda for Change. A range of career pathways exist and there are further post qualification routes into Family Therapy, Play Therapy, Cognitive Behavioural Therapy and Clinical Psychology.

## Further Information

### Entry requirements

The programme will be available to Honours graduates in psychology (or equivalent, if eligible for Graduate Basis for Chartered Membership) normally at 2:1 or above. Undergraduate degrees which have been graded lower than a 2:1 may be considered if the applicant has an additional relevant postgraduate qualification at Masters level. Applicants should be able to demonstrate an interest in developing theory practice links in work with children and young people's mental health. A genuine interest in working with children and young people is essential as is a commitment to evidence-based practice.

### Orientation

Trainees will be placed throughout the year in one main Child and / or Adolescent Clinical Psychology Service or CAMHS within the NHS in Scotland under the supervision of a qualified clinical psychologist and will be involved in delivering services immediately. The trainee will attend the University of Edinburgh and NHS sites in Glasgow for teaching blocks and days throughout the year. Assessment will be by a combination of performance on clinical placement, and a range of written assessments including case conceptualisation, written examination, group project and research dissertation.

### Selection

Places on the programme are commissioned for NHS Scotland by NHS Education for Scotland (NES). Trainees are NHS Employees, employed and managed within psychology services in NHS Boards. There will be a single selection process jointly undertaken by the University and the NHS employers. The selection process is conducted in three stages; an initial shortlist is selected by the core programme team and NHS representatives; local NHS representatives and members of the programme team then select applicants for the interview stage of the selection process; finally, a joint interview panel (of NHS and academic representatives) select applicants for admission onto the programme.

### Programme Length

12 months full time

For detailed information about the programme structure, individual modules, and degree regulation please visit: <http://www.ed.ac.uk/schools-departments/health/clinical-psychology/studying/msc-applied-psychology>

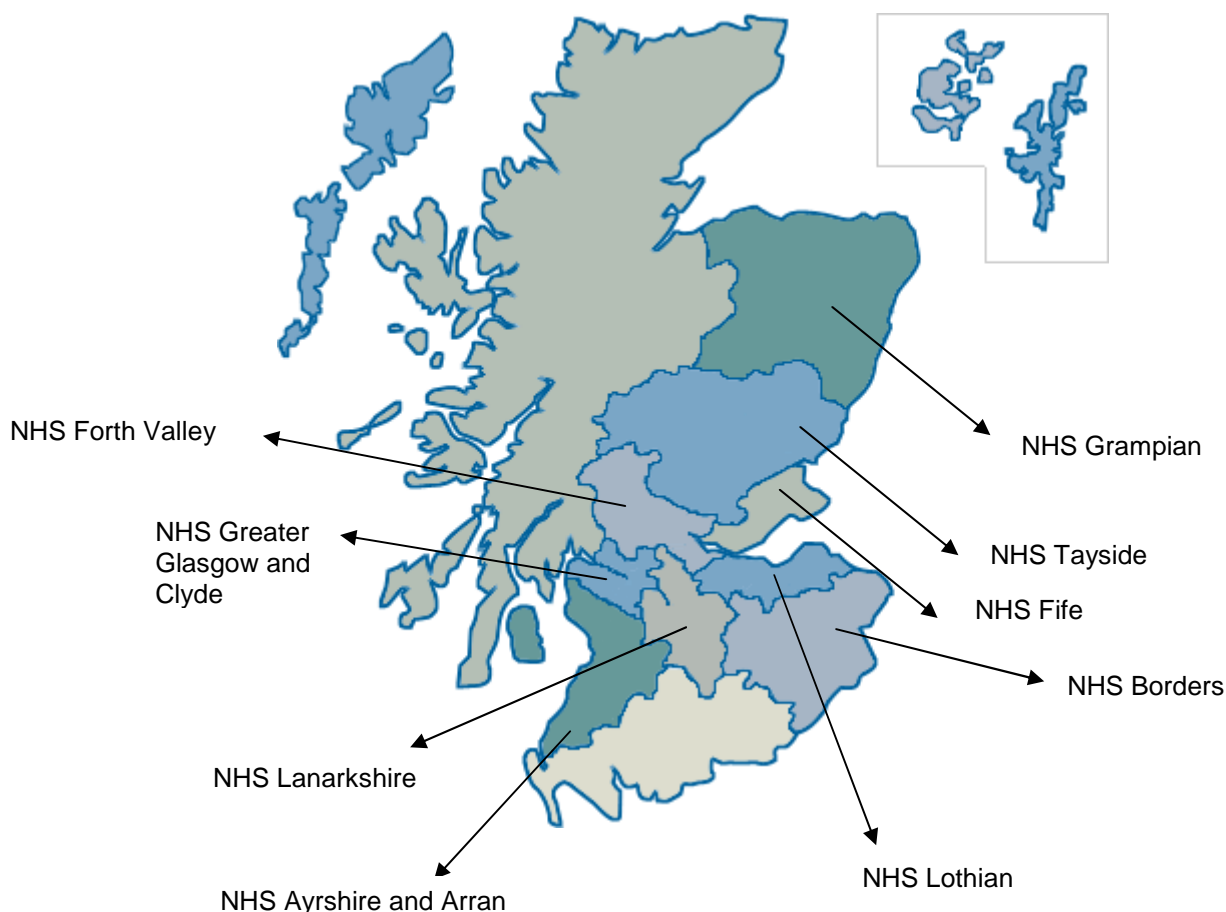
### Contact Details

For specific enquiries about the programme please contact the programme secretary:  
Jo Claydon, 0131 651 3970, [cyp.msc@ed.ac.uk](mailto:cyp.msc@ed.ac.uk).

## Participating Health Boards

Trainees on the MSc programme are salaried employees of NHS Health Boards in Scotland. Half of the training involves successful completion of supervised clinical placements in a health board area. The employing Health Board is responsible for paying trainee salaries and expenses and for providing supervised clinical placements. Health Boards have a formal agreement about these responsibilities with NHS Education Scotland (NES) which provides funding. Health Boards were invited by NES to indicate their interest in commissioning training places and we expect the following Health Boards are looking to recruit trainees for the February 2012 intake.

## NHS Boards in Scotland



## NHS Ayrshire and Arran

Psychological Services is a multi-professional, area-wide psychological Service within NHS Ayrshire & Arran employing over 100 members of staff, including Clinical/Counselling Psychologists, Cognitive Behavioural Psychotherapists, Counsellors, Group Analytic Psychotherapist, & Clinical Associates in Applied Psychology.

The Service offers a wide range of clinical specialisms: Child & Family Services (delivered through Community Paediatrics, Child & Adolescent Mental Health Services (CAMHS), Medical Paediatrics and an Autism Service. Older Adult Service; Adult Services (delivered through Primary Care Mental Health Teams and Community Mental Health Teams); Learning Disability Services (delivered through multi-disciplinary Learning Disability Teams & a 16 bed residential assessment & treatment service). In addition Clinical Psychologists provide a service to the sub-specialty areas of: Oncology & Palliative Care (1 Clinical Psychologist), Eating Disorders (1), Health & Neuropsychology (4), Psychiatric Rehabilitation & Continuing Care (6).

Psychological Services employs Trainees from both the West of Scotland Doctorate in Clinical Psychology and the MSc in Applied Psychology for Children and Young People. Currently Psychological Services employs eleven Trainee Clinical Psychologists and one Trainee Clinical Associate (Children and Young People). With a

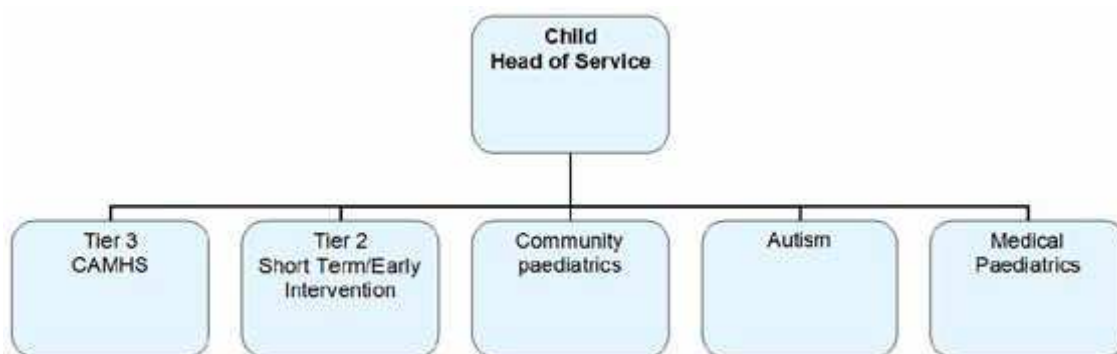
further three Trainee Clinical Psychologists being employed in the intake of 2010 and a further Trainee Clinical Associate being welcomed into the Service in 2011.

NHS Ayrshire & Arran have established systems for supporting Trainees. For example, (1) throughout their training experience Trainees will receive support from the Ayrshire & Arran Local NHS Psychology Tutor, Dr Karen Porter. This includes the co-ordination and support of clinical placements (2) the Psychological Services Clinical Governance, Research and Strategy Group have devolved responsibilities for reviewing and approving audit & service evaluation projects allowing more streamlined processes for approving projects.

### Child Clinical Psychology Service

Head of Psychological Speciality(Child) and Consultant(Community Paediatrics) – Mr Alan James  
Consultants – Mr Morgan MacPhail (Child and Adolescent Mental Health Service)  
Dr Terri Carney (Medical Paediatrics)  
Dr Kerry Teer (Autism Spectrum Conditions)

Training placements are currently offered to the Glasgow Postgraduate Course for Clinical D.Clin.Psy on both generic and specialist basis. The generic placements have to date been centred on the Child and Adolescent Mental Health Service and the Community Paediatric Service. Specialist placements have been offered within Camhs, Medical Paediatric, Autistic Spectrum Disorder and in Community Paediatrics. The Service consists of 16.5 wte Clinical Psychologists, 1 wte Clinical Associate in Applied Psychology and 3 Psychology Assistants. A recent review of Mental Health services offers the prospect of further developments. Below is an overview-



Organisational change within Ayrshire and Arran has seen the development of a Combined Children’s Service of which psychology is a part. Ayrshire and Arran is split into 3 local authority areas. The Child and Adolescent Mental Health Service is delivered from 3 teams located broadly co-terminus with the local authority areas. Early Intervention Clinicians working at Tier 2 allow Child and Adolescent Mental Health Services to increasingly offer specialist services at Tier 3.

The Community Paediatric Service is based within a Child Development Centre (Rainbow House) in Irvine but also delivered to the 3 locality areas by Psychologists who have a specific responsibility to those geographical regions.

The Autistic Spectrum Disorder Service for Children is currently delivered Ayrshire wide with Clinical Psychologists providing input to both the CAMHS and Community Paediatric teams.

The Medical Paediatric Service is well established and has enjoyed recent development allowing it to focus on the full range of clients within the acute hospital sector from Neonates to late teenagers. The Clinical Psychologists offer a service to children and young people with a range of physical health conditions.

Ayrshire is an area that has wide variations in affluence and significant pockets of both rural and urban deprivation. The county is geographically widespread and it is likely that any trainee would get maximum benefit if they are also able to drive and have access to a car.

## **NHS Borders – Child and Adolescent Psychological Services**

### **The Region**

The Scottish Borders has a population of approximately 111,000 in a rural setting. The roads are relatively quiet and the scenery is stunning. There are no cities, with the largest towns being around 15,000 in population. It is an ideal area for those who enjoy fresh air and outdoor pursuits, such as, cycling, walking, horse-riding etc. It is within easy reach of Edinburgh, housing is attractive and very affordable, and there remains a strong sense of local community.

### **Child and Adolescent Psychology Services**

Psychological Services in the Scottish Borders are located within a multi-disciplinary team providing services to children and adolescents. The service is based in Selkirk and works across five geographically determined areas. There are six clinical psychologists in the team and the service also provides training to the East of Scotland Doctoral Course. Working relationships both within teams and across agencies are well developed in the Borders. As well as child and adolescent mental health, the team also includes specialist services to Paediatrics, Learning Disabilities, ADHD, Autistic Spectrum Disorders and Forensic. Specialist areas of team functioning also include input from Dieticians, Music Therapists, Speech and Language Therapists, Occupational Therapists and Paediatricians.

The service prides itself on providing a supportive, creative working atmosphere whilst retaining a sense of humour and perspective. The post will include a high level of support and supervision, as well as the opportunity to develop personally and professionally. The service is quite eclectic in its approaches to clinical work drawing on a wide range of training and experience including: Family/Systemic work, Developmental Psychology, Attachment theory, Cognitive-Behavioural work etc.

## **NHS Forth Valley**

### **The Region**

Forth Valley's population, of approximately 277,000, live in a variety of urban and rural settings. The area's southern reaches lie in Scotland's Central belt, where the majority of its population lives, approximately mid-way between Glasgow and Edinburgh. The northern limits end in small towns and villages amongst the scenic fringes of the Southern Highlands. The two main urban centres of the region are Stirling and Falkirk. Stirling is a historic city with striking architecture, whilst Falkirk has always been an important trading and industrial centre of Scotland. Although there are some areas of deprivation within the catchment population, in general, the levels of morbidity and deprivation are below the national average.

### **Clinical Psychology Services**

There are two departments of Clinical Psychology, the Adult Service which includes Learning Disability headed by Ms Ruth Salter, and Child and Adolescent Services which are part of a combined of a Child and Adolescent Mental Health Service, headed by Mrs Helen Stirling.

### **Child and Adolescent Services**

There are eighteen permanent staff within, CAMHS, 4.5 of whom are Clinical Psychologists for children and young people aged up to eighteen and their families. There are two bases, Stirling base is at 1 Randolph Road, Stirling and the Falkirk base is at The Manor, Brown Street, Camelon. Both bases are well appointed and assistant psychologists have access to a PC, email and the internet and there is adequate office space. There are bookable rooms for seeing children and families, including playrooms in both sites.

Relationships within the Child and Adolescent Mental Health Team are good and there is also a Primary Mental Health Worker service working with mild to moderate or emerging mental health problems in children and young people with strong links to local authority based out in the community. We expect that the MSC trainee will have close links with this part of our service.

We are a busy service with a high referral rate, referrals come mainly from General Practitioners but also from Paediatricians, School Nurses, Educational Psychologists, Speech and Language Therapists and Social Workers. We offer a consultation service to Health Visitors and to Social Workers.

The main therapies employed are behavioural and cognitive behavioural therapy, Parent management strategies, individual play therapy, trauma resolution therapies, including EMDR, solution focused therapy and family therapy. Referred clients are initially assessed using a choice appointment which helps them to identify their treatment goals, they are then sign-posted to other services if this is more appropriate, or taken on for input from the most appropriate professional. We are also currently piloting a new parent drop-in service as an alternative referral route. We use the Health of the Nation Outcome Scales for a global evaluation pre and post treatment as well as individual rating scales, and we also undertake psychometric assessments when necessary.

It is envisaged that the MSc trainees will be involved in assessment including psychometric assessments and involvement with individual therapies such as behavioural and cognitive behavioural approaches, parenting interventions, and opportunities to observe other assessments. Input into the Early access clinics . and work with children with elimination disorders using behavioural approaches will be parts of the role also. Weekly supervision will be provided as well as participation in both psychology department activities and activities of the wider CAMHS Service.

## **NHS Grampian – CAMHS Rowan Centre, Elgin**

### **The Region**

Moray is situated to the west of Aberdeen and enjoys both fine rural landscape and spectacular coastline. There is easy access to the Cairngorm Mountain range and airports in both Aberdeen and Inverness. Moray has a population of approx. 90,000 with the Royal Air Force bases and the oil industry attracting many families to move to the area ensuring a rich and diverse population.

### **Child and Adolescent Services**

The Rowan Centre at Elgin is a busy, dynamic multi-disciplinary CAMHS team using eclectic approaches based largely on a family systemic model. The service responds to the mental health needs of children and young people in Moray aged 0-16/18, working with young people aged 16-18 if they are still in school. The Rowan Centre forms part of the integrated CAMH service in Grampian. The other departments contributing to the Integrated CAMH service are the Child and Family Mental Health service based in the Royal Aberdeen Children's Hospital and the Young People's Department based in Cornhill Hospital, both in Aberdeen City.

The team consists of approximately 8 Clinical staff including 2 Clinical Psychologists. The service uses joint assessment clinics and provides a wide range of multi-disciplinary interventions. The service has developed a pathway for referrals using a triage assessment process in line with increasing specialist clinics for specific difficulties such as ADHD, ASD and Anxiety Disorders. The service offers an emergency response service within hours and supports the emergency care services out-of-hours.

The service has developed with its partner agencies in Moray, a project called CALM (Consultation, Advice, Liaison in Moray) to provide other professionals with support in relation to their work with children and young people and their mental health needs. This involves offering systemic consultation and training as well as responding to queries from professionals about mental health issues in general through to specific questions about a young person. Team members have responsibility on a rota basis to respond to such queries and also perform the role of managing and assessing the appropriateness and priority of referrals to ensure that cases are processed efficiently and are matched to the most appropriate pathway for their needs. The service has also supported the development of capacity within the wider children's services to support children and young people with their mental health, through a range of initiatives with the Health Promotion and Education services; principally through the Mental Health Framework Pilot Project.

The service is committed to training and developing the CAMHS workforce and encourages research and audit activity across the team.

The service in Moray is managed by NHS Grampian in line with CAMHS services based in Aberdeen.

## **NHS Greater Glasgow and Clyde**

Trainees placed with us will be joining a well established and large network of psychologists (over 60 wte) working with children and young people. Many of the services to children and young people are provided for in Community Health Partnerships and span multi-disciplinary Child and Adolescent Mental Health as well as physical health, developmental and disability services in community and hospital settings. Psychologists are

embedded within these service frameworks and offer a wide range of specialist skills. It is envisaged that MSc trainees will have the opportunity to learn about and gain some additional experience across specialties while focussing primarily on community based early intervention approaches.

Placements will mainly be provided in the Early Intervention and the Direct Access strands of Child and Adolescent Mental health both of which focus upon mild to moderate mental health needs. Early Intervention staff work with pre-school and primary age children, while the Direct Access staff work with young people attending secondary school. Occasionally placements will also be offered in CAMHS or in paediatric clinical psychology. Trainees will gain experience across the entire age range and will have well co-ordinated supervision arrangements from a staff group with considerable experience and enthusiasm for training and supervision. Trainees will be co-located with supervisors and will have frequent contact with peers. Psychologists are actively involved with service evaluation, audit and research across several themes in Early Intervention and clinical outcome data is routinely collected, analysed and used to inform service design and delivery.

Discussions are currently underway about strengthening locally based multi-agency working with the development of integrated Early Intervention approaches a high priority. Early Intervention and Direct Access staff will be at the forefront of these developments.

Within this large Health Board there is good access to libraries and professional and clinical development activities. Quarterly network meetings for psychologists in Children and Young People's Services allow trainees to meet with colleagues and hear about services, recent developments and other clinical issues. The benefits of rural or city centre living are available within reasonable travelling distance according to taste.

## **NHS Lanarkshire – Child and Family Clinics (CAMHS)**

The Child Psychology Service in NHS Lanarkshire has developed significantly over recent years and currently consists of 19 qualified staff (3 Consultant Clinical Psychologists, 14 Clinical Psychologists of other grades, 2 Counselling Psychologists and 3 Clinical Associates). All posts are located within multi-disciplinary CAMHS teams with input to each of the 6 locality based teams (Motherwell, Bellshill / Coatbridge, Airdrie / Cumbernauld, Hamilton, East Kilbride and Clydesdale) and also to the specialist teams for children who are Looked After and Accommodated, children with Learning Disabilities and the Primary Mental Health Team. A new Paediatric Psychology service is being developed at present with input to children with chronic medical conditions and acquired brain injury.

The CAMH Service currently offers provision to children and young people under 16 years with a range of presenting difficulties. All services are outpatient based and firmly located within their local community. Lanarkshire CAMHS has a strong history of multi-disciplinary and inter-agency working and systemic practice, all of which have been strongly recommended in Scottish Executive policy regarding CAMHS and Child Health Services. Current priorities for service development with NHS Lanarkshire CAMHS include the expansion of the Primary Mental Health Team to provide more comprehensive services to Tier 2 across Lanarkshire, development of an Intensive Home Support Service and expanding the age range to 18 years.

There are currently 2 Clinical Associate posts established within the Primary Mental Health Team, who provide a largely school-based service with a focus on promotion, prevention and early intervention delivered via consultation, training and some direct clinical work.

Currently the service offers training placements to Doctoral Trainees in Clinical Psychology from both West and East of Scotland courses and to MSc Trainees (Clinical Associates in Applied Psychology for Children and Young People). Staff contribute to teaching on all these courses and to other professional and academic courses. The CAMH Service has a strong commitment to the provision of child and adolescent mental health training to other staff within NHS Lanarkshire and to external agencies, with Psychologists playing a significant role in the delivery and coordination of this training.

Lanarkshire itself covers a large geographical area with a mixed rural and largely urban population of 560,000. This includes significant areas of deprivation but also areas of outstanding natural beauty. Clinical bases are all within easy commuting distance of Glasgow, Edinburgh and Stirling and there are excellent motorway and rail links across the county. Some placements will require a fair amount of travelling to access schools and other bases.

## **NHS Lothian**

### **Lothian NHS Child and Adolescent Mental Health Services**

Health Services in Lothian are organised in one Health Board incorporating five Community Health Partnerships (CHP's). Lothian Child and Adolescent Services provides a wide range of mental health services for children, young people and their families in all CHP's (North and South Edinburgh and Mid West and East Lothian). The service offers a comprehensive range of community, outpatient, day and inpatient intervention to children and young people up to age 18, and their families. There are 25 whole time equivalent Clinical Psychologists working in CAMHS. Some services offered are Pan-Lothian and the inpatient Unit offers a service across the South East of Scotland. The CAMHS Learning Disability and Autism team provide a pan Lothian Service for young people who have a learning disability with or without Autism, in association with complex behavioural, psychological or mental health problems.

The Lothian placement will be primarily based in one of the generic Outpatient Teams or in the learning disability and Autism service. In both teams, the trainee will have an opportunity to work with children and young people and their families. The department has an ongoing commitment to teaching and research, and is involved in a number of Scottish Executive research projects.

The placement of clinical psychology within multidisciplinary teams offers good opportunity for joint working and consultation with partner agencies including statutory and voluntary. The therapeutic approach is varied across clinicians, but includes cognitive behavioural, psychodynamic, interpersonal therapy and narrative and family therapy. Structured evidence-based parenting interventions are also being developed. There is a strong commitment to formulation and collaboration.

MSc trainees will be supported through regular supervision and multidisciplinary meetings to provide a community based early intervention approach. Assessments will be done both individually and jointly, and the information gathered will be used to develop a clear formulation of a child and young person's presenting difficulty to guide intervention. Intervention will be individual, family and group of a short-term duration. Trainees will be encouraged to evaluate the effectiveness of the interventions using a range of age appropriate formal and informal measures.

### **West Lothian Health and Care Partnership**

The West Lothian Clinical Psychology department is based within the modern teaching hospital of St John's Hospital in the centre of Livingston. The Psychology Department provides a comprehensive service for the whole population of West Lothian, from childhood to old age (approximate population of 17,000). West Lothian is one of the few areas in Scotland with a growing population and has a high proportion of children and young people.

The department has around 15 members of staff who have a range of special interests and theoretical orientations (including cognitive behavioural, cognitive analytical and narrative). It benefits from having a branch of Napier University library onsite and has good working relationships with psychiatry, neurology, physical health and allied health professions.

The Child and Adolescent Clinical Psychology department is part of this larger psychology service. There are 3 whole time equivalent clinicians working within this section. Trainees are encouraged to participate in the regular work of the Department, including attending and participating in our weekly department meetings, journal club and research meetings.

Competencies are developed in clinical interview skills (with individual young people, families, carers and other professionals), observations of standardised instruments, as well as risk assessment where appropriate (critical importance is given to child protection training). Assessments can be carried out in a variety of settings. This may require observation within a medical, educational or home setting. There are also opportunities to participate in the assessment clinic format currently adopted by the child and adolescent psychology department.

A range of interventions are available within the department, including opportunities for trainees to act as co-therapists in group interventions. Therapeutic skills can be developed through discussion in supervision, guided reading and audio- or video-taping of patient sessions. Treatment often requires liaison with other services and requires significant attention to the family system. Opportunities exist to participate in multi-professional consultation clinics for primary care staff, social work and education.

Trainees are encouraged to evaluate the effectiveness of clinical interventions using a range of age appropriate formal measures and to choose tools specifically for use with individual clients.

Trainees will be directed towards relevant research related to therapeutic work with young people and will be expected to make use of this to guide their clinical work and to discuss in supervision.



## NHS Tayside Area – Psychological Therapies Service

### The Region

Tayside has a geographical area of some 2,896 square miles and has a population of approximately 388,000 people. The population is distributed through the major urban centre of Dundee to other smaller cities and towns and other communities across the area. As a region, Tayside can offer its residents experience of both a city lifestyle, and the tranquillity found in mountain and coastal areas with almost everything else in between. The health and social problems presented to the Department reflect this diversity of lifestyle.

### Tayside Area Psychological Therapies Service

The Tayside service has an establishment in excess of 100 wte staff, including Applied Psychologists, Clinical Associates, Accredited Therapists, Assistant Psychologists plus Doctoral and Masters Trainees.

The service comprises a wide range of specialties including:-

Adult Primary Care, Community Mental Health Teams (services to General Adult Psychiatry), Child and Adolescent Mental Health Services (CAMHS), Neuropsychology, Older Adults, Health Psychology, Addition Services, Learning Disabilities, Forensic Psychology, Eating Disorders.

Research plays a key role in the clinical work undertaken and the service has strong links with many universities including Dundee, Abertay, Stirling, St Andrews and Edinburgh. The department has a strong commitment to teaching not only trainees on various courses, but members of other professions as well. The department also has a strong tradition in its approach to ongoing professional development and runs its own programme of lectures, workshops and events. The Department is also committed to maintaining its influential role in developing and expanding the area of clinical psychology within the NHS itself. To this end the department will always seek to maintain the highest number of trainees it can appropriately supervise on placement at any one time.

### Child and Adolescent Services

The Clinical Psychology Team of 9.2 wte staff is integrated into the Tayside-wide, multidisciplinary Child and Adolescent Mental Health Services (CAMHS). Services are provided from two geographical bases – Centre for Child Health, Dundee and Pitcullen House, Perth. There is a developing primary care service and a more established secondary care service, which operates within two distinct teams of Developmental Psychiatry and Emotional Disorders. Additionally, Clinical Psychologists also offer input to neuropsychology, paediatrics and to inpatients in the Young People's Unit. It is anticipated that trainees on the MSc in Applied Psychology for Children and Young People would work primarily alongside the primary care service although appropriate experience may also be available within the secondary care settings.

## NHS Fife

### The Region

The Kingdom of Fife is a large mixed rural/urban area stretching from Kincardine in the West to St Andrews in the East, and bordered by the Firth of Forth and Tay in the South and North. There are good road links throughout the region as well as to other parts of the country. The scenery varies from small ex-mining towns to rolling farmland, all bounded by a wonderful coastline. NHS Fife is contiguous with Fife Local Authority. NHS Fife comprises 3 Community Health partnerships, as well as an operating division to manage acute services.

The Child and Family Clinical Psychology department is part of a large area Clinical Psychology department of eight specialities, comprising over 100 staff. There are over 20 Psychologists working in primary care, CAMHS Tier 3 teams, CAMHS Intensive Therapy, paediatrics, Centre for the Vulnerable Child (CVC), ADHD teams, ASD services, youth justice and early intervention. The department has a major commitment to training and we train a large number of doctoral trainees. We are located at two bases at Lynebank Hospital in Dunfermline and at Stratheden Hospital near Cupar. The department has a reputation for being friendly, welcoming and supportive. Please see the department's website for further information at <http://www.dwfchp.scot.nhs.uk> under Health Services.

CAMHs in Fife, comprises Child Psychiatrists, Community Nurse Therapists, Occupational Therapists and Psychotherapists. The Centre for the Vulnerable Child is a dedicated multi-disciplinary service for children who have been sexually abused.

MSc trainees do their clinical placements in the primary care service within the Child and Family Clinical Psychology department. There are clinics in GP practices across Fife. The primary care service is designed to see children and families within a few weeks of referral, and offers short-term assessments and interventions. The service is also involved in the Solihull Approach, which aims to enhance the skills of Health Visitors working with families.

The primary care service is headed by Dr Sally Anderson. Other clinical psychologists in the service include Dr Sally Henderson and Dr Maggie Brierton, and clinical associates Amy Thomas, Fenella Hayes and Louisa Young.