

Please visit www.samsunghdd.com (Utility Download) and use the Disk Manager for solving the hardware barrier.

Q4 Although my drive is bigger than 32GB and Disk Management recognize the hard drive, it is only shown as 32 GB.

There are two ways for setting jumpers.

One is the general jumper setting for recognizing the drive's own capacity, the other is the 32GB clip jumper setting for recognizing only 32GB capacity whatever the real capacity is. It seems that you have set the 32GB clip jumper.

Q5 Although my drive supports up to UDMA 133, it is recognized as UDMA 100.

Please visit www.samsunghdd.com and use the HUTIL for confirming or switching the UDMA mode on your drive if your motherboard supports UDMA-6. Because some motherboards have a problem for supporting UDMA-6(133), we set UDMA mode as UDMA-5(100) during the production. You can switch the drive's UDMA modes with the HUTIL. (HUTIL has been uploaded onto www.samsunghdd.com)

Q6 I am looking for a Software & Firmware (mainly about drivers) but I found nothing.

Where I can find I want ?

We don't release any firmwares.

Because the product has been already optimized with its own configurations. IDE (PATA & SATA) drive does not need any drivers. You just have to make a partition and format your drive for using.

Please make sure whether you had partitioned and formatted.

First of all, you must partition and format for recognizing the new drive in the Windows Explorer.

Within Win98 series, please use the Fdisk.

Within Win2000 & Win-XP, please use the Disk Management.

When installing Win2000 or Win-XP, the installation process includes the new drive in the Windows Explorer.

To open the Disk Management

- ① Click Start, point to Settings, and then click Control Panel.
- ② Double-click Administrative Tools, and then double-click Computer Management.
- ③ In the left panel, expand Storage, and then expand Disk Management.

Contact SAMSUNG WORLD WIDE

If you have any comments or questions regarding a Samsung products.

Country	Customer Care Center ☎	Web Site
CANADA	1-800-SAMSUNG (7267864)	www.samsung.com/ca
U.S.A	1-800-SAMSUNG (7267864)	www.samsung.com
GERMANY	01805 - 121213 (€ 0,14Min)	www.samsung.de
U.K	0870 SAMSUNG (7267864)	www.samsung.com/uk
RUSSIA	8-800-200-0400	www.samsung.ru
UKRAINE	8-800-502-0000	www.samsung.com/ur
AUSTRALIA	1300 362 603	www.samsung.com/au

The Names and Content of Toxic and Hazardous Substances or Elements

Parts	Toxic and hazardous substances or elements					
	Pb	Hg	Cd	Cr ⁶⁺	PBB	PBDE
Printed Circuit Assemblies	X	O	O	O	O	O
Head Disk Assemblies	X	O	O	O	O	O

O : Indicates that the concentration of the hazardous substance in all homogeneous materials in the parts is below the relevant threshold of the SJ/T11363-2006 standard.
 X : Indicates that the concentration of the hazardous substance of at least one of all homogeneous materials in the parts is above the relevant threshold of the SJ/T11363-2006 standard.

SAMSUNG ELECTRONICS CO., LTD.
 STORAGE SYSTEM DIVISION
 HEAD OFFICE: 94-1, IM SOO-DONG, GUMI-CITY KYUNG BUK, KOREA 730-350
 FAX : 82-54-479-55673. Making Computer Detect the New Device

This device complies with Part 15 of the FCC Rules. Operation is subject to the following two conditions:
 (1) this device may not cause harmful interference, and
 (2) this device must accept any interference received, including interference that may cause undesired operation.



This marking shown on the product or its literature, indicates that it should not be disposed with other household wastes at the end of its working life. To prevent possible harm to the environment or human health from uncontrolled waste disposal, please separate this from other types of wastes and recycle it responsibly to promote the sustainable reuse of material resources.

Household users should contact either the retailer where they purchased this product, or their local government office, for details of where and how they can take this item for environmentally safe recycling. Business users should contact their supplier and check the terms and conditions of the purchase contract. This product should not be mixed with other commercial wastes for disposal.

© Samsung Electronics Co., Ltd. Printed in Korea. BF68-00235A REV03

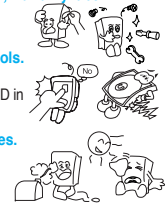


3.5" HDD INSTALLATION GUIDE

Samsung does NOT guarantee any data on your drive, please always BACK-UP your precious data.

Precautions

- ☞ **1MB = 1,000,000bytes / 1GB = 1,000,000,000 bytes.**
 Actual accessible capacity may vary from advertised capacity due to formatting and partitioning of the hard drive, as well as due to your computer's operating system.
- ☞ **Do not drop, shock or strike.**
 If apply impact to the HDD, it causes a Bad Sector by crashing between Head and Media. Do not stack. Do not external shock and vibration.
- ☞ **Do not remove all items, such as Hard drive label, warranty label.**
 Warranty void if any stickers or labels are removed or damaged. Never disassemble hard drives.
- ☞ **Do not touch the circuit board with hands or tools.**
 Protect the HDD from Electrostatic Discharge(ESD). MR Head is very sensitive in Electrostatic. Keep the HDD in their static shielding bag.
- ☞ **Avoid extreme temperatures and humidity places.**
 Humidity causes a drive malfunction by reacting with an ingredient of oil in Disk and Head surface. Also, parts can be corrode by leaving in humidity.



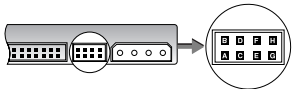
When use an external case

- ☞ **Do not drop or fall while using and being storage the external case.**
 An external case is easy to transfer, but can be shocked easily also.
- ☞ **Check the External case's Grounding**
 External case's Grounding prevents HDD malfunction form ESD.



PATA Installation

Configuring your Hard Disk Drive (Master, Slave)



Regular Pin Setting:



Set as Master (AB)



Set as Slave



Select Cable (EF)

If your computer's maximum support level is under 32 GB:



Set as Master (AB + CD)



Set as Slave (CD)

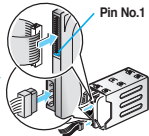


Select Cable (CD + EF)

Installation Your Hard Drive

- Note: - Turn off the system power !
- Cover opening mechanism and the location of the hard disk drive may vary from one computer to another.

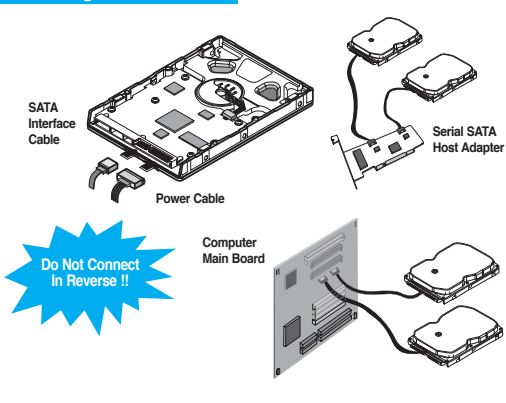
- 1 Turn off the computer, unplug the external cables, and open computer cover. Mount the hard disk drive in the designated place in the computer with screws provided with the product.



- 2 Connect 40 pin interface cable and power cable. Make sure that the direction of the cables are correct and matches the shape of the receptacles when connecting cables. Incorrect cable connection may damage the hard disk drive.

SATA Installation

Installing the hard disk



Note: In some rare cases SATA 1.5Gb/s hosts can not establish SATA interface connection with SATA 3.0Gb/s devices due to interface protocol issues.
In this case you should switch your drive to SATA 1.5Gb/s speed with a software which we are providing via www.samsunghdd.com.

- (a) Turn off the power of your computer.
- (b) Unplug the external power cables to the computer.
- (c) Open the cover of your Computer.
Cover opening mechanism and the location of the hard disk drive may vary from one computer to another. (Consult your computer manual)
- (d) Insert the HDD into an available 3.5" bay in your computer and secure it to computer and secure it to the chassis using the provided screws.
- (e) Connect Cables.

- 1 Attach the SATA interface cable to the interface connector on the hard disk drive. The connector is keyed and will fit in only one way.
- 2 Attach the power cable to the power receptor on the hard disk drive. The connector is keyed and will fit in only one way.
- 3 Check all other cable connections before turning on your computer.

CAUTION! Do not force or rock the connectors into their sockets on the hard disk drive. Push them in straight until they are seated.

1. Making Computer Detect the New Device

Note: Run the CMOS (BIOS) set-up program to detect the new hard disk drive.

- 1 Go into CMOS screen during the booting of the computer. For descriptive details of the program, refer to the computer's user's manual.
- 2 Make the computer detect the hard disk.
 - ① If your computer supports IDE HDD Auto Detection, the hard disk drive will automatically be detected.
 - ② If your computer does not support auto detect, go into the User Define Mode and by referring written information on the product, set the correct settings for Cylinder, Head, and Sector and if some Bios must be, set the HDD Mode to LBA.
 - ③ Save the changed details and exit.

2. Partitioning and Formatting the Drive

Refer to your Operating System manual or system manual for partitioning and formatting.

3. Samsung World Wide Web Site

Additional information can be obtained at www.samsunghdd.com.

FAQs

- Q1** HDD does not be recognized in BIOS setup.
 - ① First, confirm whether each cable was connected correctly.
 - ② Confirm whether Jumper-setting is correct.
 - ③ Confirm whether BIOS setup became correctly.
- Q2** Even though the HDD recognized in BIOS setup, it does not be seen in Windows.
 - ① Confirm whether did correctly partition and format.
 - ② Partition can be created through the Fdisk or Installing OS according to OS's version.
- Q3** Although my drive is larger than 137GB, it is only shown as 137GB.

There are two reasons of the 137GB (128GiB) capacity barrier. One is a hardware barrier which some motherboards do not support 48 bit LBA. The other is a software barrier which Windows2000 and Windows XP do not support larger than 137GB.

Please refer below URLs for recognizing larger than 137GB in the software barrier.

For download the SP3 for Win2000:
www.microsoft.com/windows2000/downloads/servicepacks/sp3/default.asp

For editing the registry for Win2000:
<http://support.microsoft.com/default.aspx?scid=kb;en-us;305098>

For download the SP1 for Win-XP:
www.microsoft.com/WindowsXP/pro/downloads/servicepacks/sp1/default.asp