



Pattern Collection: Women



Mermaid Tunic

Designed by Universal Yarn Design Team

SIZES

Small (Medium, Large, 1X, 2X, 3X)

FINISHED MEASUREMENTS

Bust: 35 (38, 41, 44½, 49, 54)''

MATERIALS

Rozetti Yarns Lumen (79% cotton, 21% viscose rayon; 50g/134 yds)

- 112 Cloud – 6 (7, 8, 9, 10, 11) balls

Needle: US Size 6 (4 mm) straight, 16'' circular (for neck edging) *or size needed to obtain gauge*

Notions: Tapestry needle

GAUGE

20 sts x 27 rows = 4'' in St st

19 sts x 27 rows = 4'' in Mermaid Lace patt

Save time, check your gauge.

Knit, Relax, Smile, Repeat!

2014 © Universal Yarn, Inc.

All rights reserved.

www.universalyarn.com

This pattern may not be reproduced for business, trade or sale.

PATTERN NOTES

This top is worked in pieces from the bottom up and seamed.

STITCH GUIDE

Mermaid Lace

(multiple of 4 sts + 1)

Row 1 (RS): K1, * k2tog, yo, k2; rep from * to end.

Row 2 (WS): P3, yo, p2tog, * k2, yo, p2tog; rep from * to end.

Row 3: K1, * k2, k2tog, yo; rep from * to last 4 sts, k4.

Row 4: P1, p2tog, yo, p2, * p2tog, yo, p2; rep from * to end.

Row 5: * K2, yo, ssk; rep from * to last st, k1.

Row 6: Rep Row 4.

Rep Rows 1-6 for patt.

BACK

Cast on 87 (95, 103, 111, 123, 135) sts.

Row 1 (RS): Knit.

Row 2 (WS): Purl.

Cont in St st for 2 more rows.

Establish Pattern

Row 1 (RS): K1, work Row 1 of Mermaid Lace patt to last st, k1.

Row 2 (WS): P1, work Row 2 of Mermaid Lace patt to last st, p1.

Cont in patt as est'd, keeping 1 st each edge in St st, until piece meas 8 (8, 8¼, 8½, 8¾, 9)'' from cast-on edge, ending with WS row. Knit 4 rows.

Work even in St st until piece meas 14 (14¼, 14½, 14¾, 15, 15¼)'' from cast-on edge, ending with WS row.

Shape Armholes

Bind off 5 (6, 7, 8, 9, 10) sts at beg of next 2 rows – 77 (83, 89, 95, 105, 115) sts rem.

Dec row (RS): K1, k2tog, knit to last 3 sts, ssk, k1 – 2 sts dec'd.

Dec row (WS): P1, ssp, purl to last 3 sts, p2tog, p1 – 2 sts dec'd.

Cont to work a Dec row every row, - (-, -, -, 2, 2) more times, then work a Dec row every RS row, 1 (2, 2, 3, 3, 6) time(s) – 71 (75, 81, 85, 91, 95) sts rem. Work even in St st until Armhole meas 7¼ (7¾, 8¼, 8¾, 9¼, 9½)'' , ending with WS row. Bind off all sts.

FRONT

Work as for Back until Armholes meas 2¼ (2¾, 3, 3½, 3¾, 4)'' , ending with WS row.

Shape Neck

Row 1 (RS): K18 (20, 22, 23, 25, 26), attach new ball of yarn and bind off center 35 (35, 37, 39, 41, 43) sts, knit across rem 18 (20, 22, 23, 25, 26) sts. Working both sides at once, cont in St st until Armhole meas 7¼ (7¾, 8¼, 8¾, 9¼, 9½)'' , ending with WS row. Bind off all sts.

SLEEVES

Cast on 56 (60, 66, 70, 76, 80) sts. Work even in St st for 3''.

Shape Cap

Bind off 5 (6, 7, 8, 9, 10) sts at beg of next 2 rows – 46 (48, 52, 54, 58, 60) sts rem.

Dec row (RS): K1, k2tog, knit to last 3 sts, ssk, k1 – 2 sts dec'd. Rep Dec row every RS row, 16 (17, 19, 20, 22, 23) more times. Bind off rem 12 sts.

FINISHING

Block pieces to finished measurements. Sew Shoulder seams. Sew Sleeve Caps into Armholes. Sew Sleeve and side seams.

Neck Edging

Beg at Right Shoulder seam, with RS facing and circ rndl, pick up and knit 35 (35, 37, 39, 41, 43) sts along Back Neck, 25 (25, 26, 26, 28, 28) sts down Left Front Neck, knit 35 (35, 37, 39, 41, 43) sts along Front Neck bind-off, and 25 (25, 26, 26, 28, 28) sts up Right Front Neck – 120 (120, 126, 130, 138, 142) sts. PM and join to work in the rnd. Knit 4 rnds. Bind off all sts. Weave in ends.

Knit. Relax. Smile. Repeat!

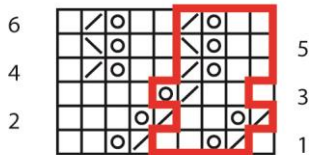
2014 © Universal Yarn, Inc.

All rights reserved.

www.universalyarn.com

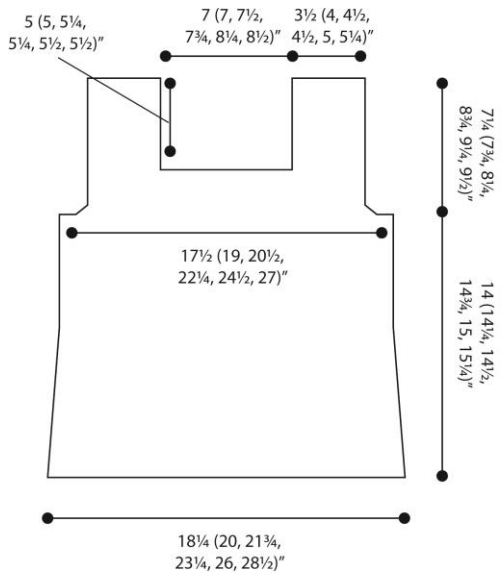
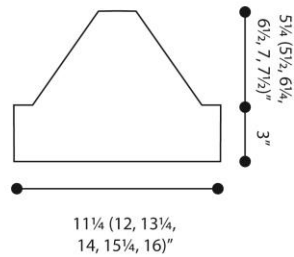
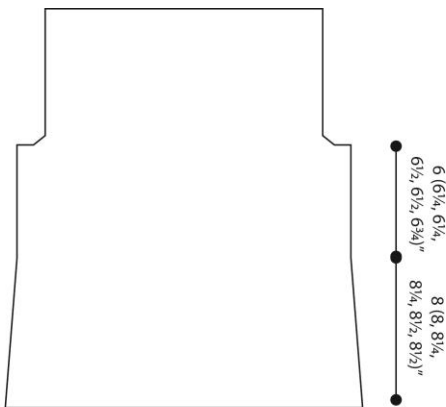
This pattern may not be reproduced for business, trade or sale.

Mermaid Lace



Key

-  knit on RS, purl on WS
-  k2tog on RS, p2tog on WS
-  ssk on RS
-  yo
-  pattern repeat



Knit. Relax. Smile. Repeat!

2014 © Universal Yarn, Inc.

All rights reserved.

www.universalyarn.com

This pattern may not be reproduced for business, trade or sale.