

Commentary for Seaford Locality

in Coastal Community Healthcare Consortium CCG
East Sussex Downs and Weald PCT
based on JSNA Scorecards, January 2012

This commentary is to be read alongside the JSNA scorecards (NHS view).
Scorecards and commentaries can be downloaded from
www.eastsussexjsna.org.uk.

Here the term 'significance' refers to statistical significance at the 95% or 99.8% confidence level.

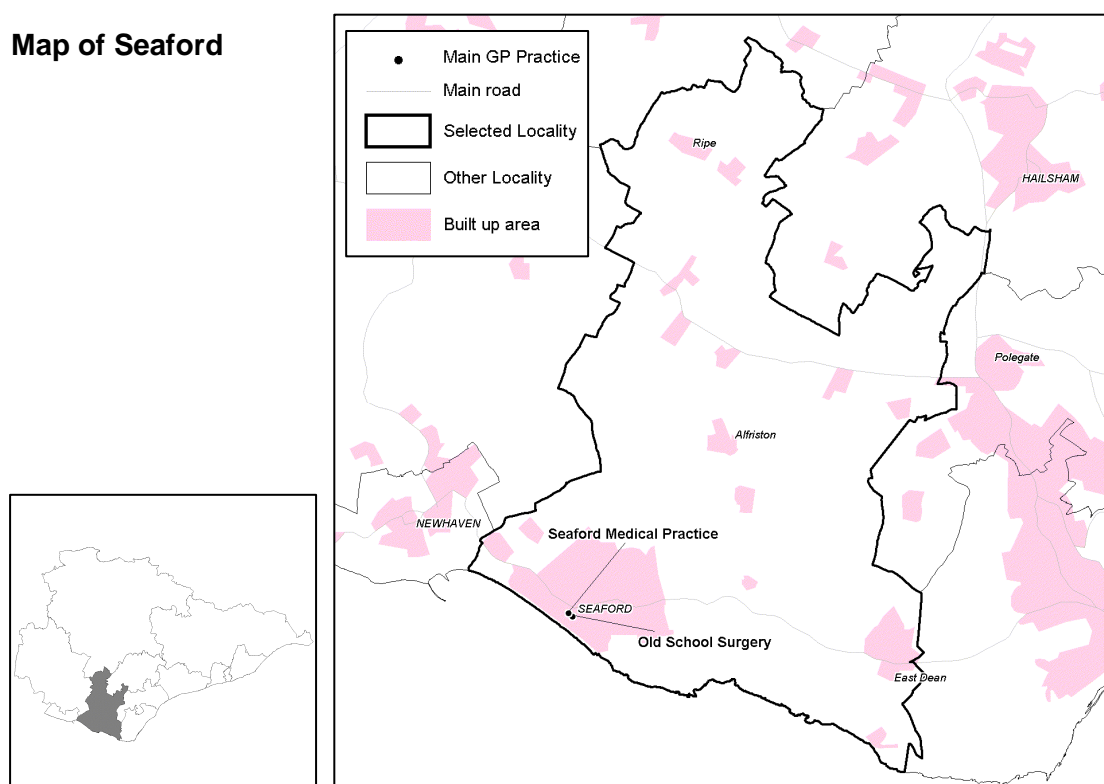
Note also that, as referenced in the relevant scorecards, a number of the indicators discussed have been modelled from local authority geographies to NHS geographies.

Glossary

Coastal Community
ESD&W PCT
Seaford
East Sussex
IMD
ID
CCG
PCT
CI

Coastal Community Healthcare Consortium CCG
East Sussex Downs and Weald PCT
Seaford locality
East Sussex PCTs overall
Index of Multiple Deprivation, 2010
Indices of Deprivation, 2010
Clinical Commissioning Consortium
Primary Care Trust
Confidence Interval

Map of Seaford



© Crown copyright and database rights 2011 Ordnance Survey licence number: 100051053
Locality boundaries were mapped by allocating Electoral Wards to the locality for which the greatest proportion of residents were registered to (as at October 2010). Note that these are distinct from individual GP practice 'catchment areas'.



DEMOGRAPHY

- Seaford has a registered population of 26,955 and is the second smallest locality in East Sussex. It consists of Seaford Medical Practice (17,168 patients), the largest practice in the East Sussex, and Old School Surgery (9,787 patients).
- Seaford has the lowest percentage of patients aged 0-19 years (18%), and the second highest percentage of patients aged 65 years and over (30%) of all the localities in East Sussex.
- The population of Seaford is estimated to increase by 3% by 2014 and 4% by 2016. The largest estimated increase is in those aged 65 years and over, with an 11% increase by 2014 and a 16% increase by 2016 (1,300 more persons aged 65 years and over).
- Seaford has the second highest number of dependents (persons aged under 16 years and aged 65 years and over) to working age people (persons aged 16-64 years) of all the East Sussex localities. Its dependency ratio of 0.91 is significantly (99.8% CI) higher than that for East Sussex (0.70).
- In Seaford the new housing completions rate of 2.0 per 1,000 dwelling stock is significantly (99.8% CI) lower than the East Sussex rate (4.1 per 1,000).

SOCIAL/ENVIRONMENTAL CONTEXT

- Seaford is the least deprived locality in Coastal Community CCG with an IMD score of 14.94.
- It is the least deprived locality in Coastal Community CCG for all domains of the ID except for the health and disability deprivation domain for which it is the second least deprived locality.
- The locality has 13% of children and 11% of older people affected by income deprivation.
- 9.6% of working age people are claiming out-of-work benefits. This is a significantly (99.8% CI) lower percentage than in East Sussex (11.6%).
- 25.3% of households are on low income (less than 60% of national median income).
- Seaford (24%) has a significantly (99.8% CI) higher percentage of children travelling to secondary school by car/van or taxi than East Sussex (18%). It has the joint highest percentage of all localities in East Sussex.

LIFESTYLES AND RISK FACTORS

- In Seaford 53% of babies were breastfed at 6-8 weeks.
- About 1 in 4 (24%) reception year children, and 29% of year 6 children, are overweight or obese.
- In ESD&W PCT 1 in 4 adults (25%) are estimated to be obese.
- In ESD&W PCT about 1 in 4 adults (24%) are estimated to be engaging in increasing risk drinking (of those who drink alcohol).

- In ESD&W PCT it is estimated that 21% of adults smoke.
- In Seaford 16% of mothers smoke at time of delivery.
- 16% of mothers and 28% of fathers are current smokers at the time of their baby's 6-8 week check.
- ESD&W PCT has a Chlamydia incidence rate of 1,791 per 100,000 population aged 15-24 years.
- ESD&W PCT has an acute sexually transmitted infections (Chlamydia, gonorrhoea, syphilis, herpes or warts) incidence rate of 513 per 100,000 population.

BURDEN OF ILL-HEALTH

- Life expectancy at birth in Seaford is 82.7 years. It is significantly (99.8% CI) higher in Old School Surgery (85.4 years) than in East Sussex (81.9 years).
- Life expectancy at age 65 is an additional 20.9 years. It is significantly (99.8% CI) higher in Old School Surgery (23.8 years) than in East Sussex (20.5 years).
- In Seaford all-age all-cause mortality (age standardised) is 4% lower than expected compared to East Sussex. In Old School Surgery it is significantly (99.8% CI) (27%) lower than expected compared to East Sussex.
- Seaford has significantly (95% CI) lower mortality (age standardised) than expected compared to East Sussex for circulatory diseases (persons aged under 75 years) and COPD.

BURDEN OF ILL-HEALTH – PRIMARY CARE

GP reported prevalences are crude rates (not adjusted to reflect the age profile of the practice) derived from Quality and Outcomes Framework (QOF) disease registers. Expected prevalences are derived from modelling of relevant research/survey data and take into account the age and sex profile of the population. Some practices report significantly higher or lower percentages of their expected prevalence than East Sussex.

- Seaford (30 per 1,000 population) reported a significantly (99.8% CI) higher rate of atrial fibrillation than East Sussex (21 per 1,000). This is the second highest rate of all localities in East Sussex.
- Seaford (28 per 1,000 population) reported the highest prevalence of cancer of all localities in East Sussex. This is significantly (99.8% CI) higher than the East Sussex rate (21 per 1,000).
- Seaford (65 per 1,000 population) reported a significantly (99.8% CI) higher rate of chronic kidney disease than East Sussex (41 per 1,000). This is the highest rate of all localities in East Sussex. It reported 56% of the expected prevalence of chronic kidney disease and this is



significantly (99.8% CI) higher than for East Sussex (43% of the expected prevalence reported).

- Seaford has the highest reported prevalences of CHD, hypertension and stroke of all localities in Coastal Community CCG and each is significantly (99.8% CI) higher than the East Sussex prevalence.
- The locality has significantly (95% CI) lower reported versus expected prevalences for COPD, dementia, diabetes and hypothyroidism than East Sussex. In each case it has the lowest ratio of all localities in Coastal Community CCG.

BURDEN OF ILL-HEALTH – HOSPITAL CARE

- Seaford has significantly lower rates of A&E attendances than East Sussex for those aged 65 years and over and 85 years and over. The overall A&E attendance ratio (89) (age-standardised) is significantly (99.8% CI) different to East Sussex, with 11% fewer attendances than expected.
- First outpatient attendances are (1%) higher (not significantly different) than expected compared to East Sussex.
- The ratio (age-standardised) of all elective hospital admissions (94) indicates 6% less admissions than expected compared to East Sussex. This is significantly (99.8% CI) lower than expected compared to East Sussex.
- Seaford has significantly (99.8% CI) (8%) fewer all emergency hospital admissions (age standardised) than expected compared to East Sussex.
- The locality has significantly (95% CI) (27%) fewer emergency hospital admissions (age standardised) due to COPD than expected compared to East Sussex and it has the lowest ratio in Coastal Community CCG.

SERVICES – SOCIAL CARE

- Seaford has a higher (but not significantly different) rate of persons aged 18 years and over, and carers, who received direct payments and/or personal budgets from social services (20.9 per 1,000 population) than East Sussex (20.5 per 1,000).
- The locality has a significantly (95% CI) higher rate of persons with physical disability, frailty or sensory impairment, currently supported to live independently through social services (25 per 1,000 population aged 18 years and over) than East Sussex (22 per 1,000).
- Seaford has a lower (but not significantly different) rate of carers known to social care (8 per 1,000 population) than East Sussex (9 per 1,000).
- The locality has a significantly (95% CI) higher rate of persons aged 18 years or over who have received community equipment in the last year (14 per 1,000 population) than East Sussex (11 per 1,000). It has the highest rate of all the localities in East Sussex.



- Seaford has a significantly (95% CI) higher rate of persons aged 18 years or over who are currently receiving adult social care funded lifeline or telecare (10 per 1,000 population) than East Sussex (8 per 1,000). It has the highest rate of all localities in Coastal Community CCG.

SERVICES – HEALTH

- Neither of the two practices in the locality has significantly different uptake of any childhood immunisations than East Sussex.
- Seaford has a significantly (99.8% CI) lower percentage of residents aged 18-64 years and 65 years and over accessing East Sussex NHS general dental services than East Sussex.
- Old School Surgery has significantly (99.8% CI) lower uptake of breast screening than East Sussex.
- Old School Surgery has a significantly (99.8% CI) lower percentage of persons aged 65 years and over receiving seasonal flu vaccination, and of persons aged 65 years and over who have ever received a pneumococcal vaccination, than East Sussex.

SERVICES – CHILDREN'S SERVICES

- 10.2% of children in Seaford receive free school meals. This is significantly (99.8% CI) lower than in East Sussex (15%). Seaford has the lowest percentage of all the localities in Coastal Community CCG.
- Seaford has a significantly (95% CI) lower rate of pupils with English as an additional language (28 per 1,000) than East Sussex (41 per 1,000).
- It has a significantly (95% CI) (9.1%) lower percentage of pupils of non-White British ethnicity than East Sussex (11.1%).
- In Seaford 59.1% of pupils scored at least 78 points overall, with at least 6 in the core areas, in Early Years Foundation Stage. Seaford has the highest percentage of all the localities in Coastal Community CCG.
- 54.6% of pupils at Key Stage 4 achieved 5 or more GCSE passes at A*-C including Maths and English.
- Seaford has a significantly (99.8%CI) lower rate of referrals to children's social care (100 per 1,000 population aged under 20 years) than East Sussex (128 per 1,000).
- The Child and Adolescent Mental Health Services (CAMHS) caseload rate is 19 per 1,000 population aged 0-18 years. Seaford Medical Practice (24 per 1,000 population) has a significantly (95% CI) higher rate than East Sussex (16 per 1,000) and the second highest rate of all the practices in Coastal Community CCG.



USER PERSPECTIVES ON SERVICES

- The locality has a significantly (95% CI) higher response rate for the GP satisfaction survey (50%) than East Sussex (46%).
- Seaford Medical Practice (53%) has a significantly (99.8% CI) lower percentage of respondents satisfied with telephone access than East Sussex (68%).
- 92% of Seaford Medical Practice respondents were able to see their preferred doctor always, almost always or a lot of the time. This is significantly (99.8%) higher than in East Sussex (80%).

