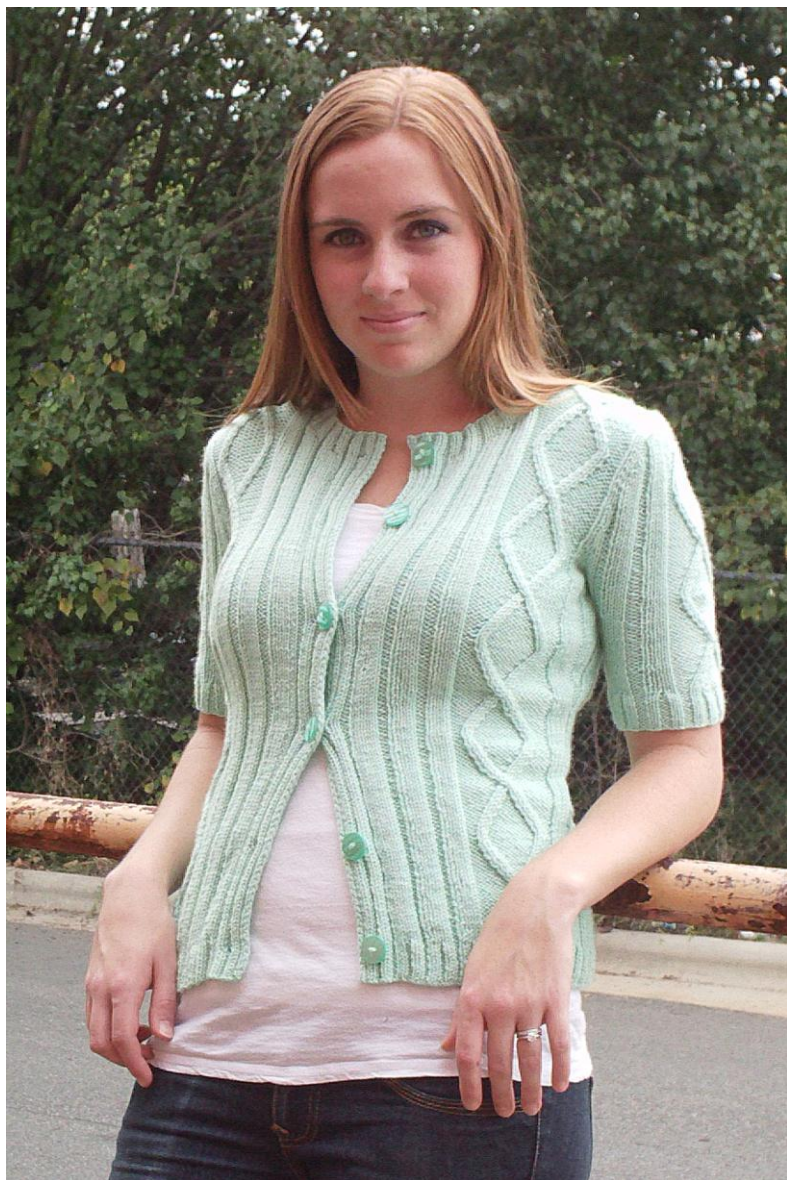




UNIVERSAL YARN

## PATTERN COLLECTION: WOMEN



### PATTERN NO.

Free

### PATTERN NAME

Traveling Diamond Cardigan

### SKILL LEVEL

Intermediate

### SIZES

Cardigan sized to fit Women's X-Small (Small, Medium, Large, X-Large)

### FINISHED MEASUREMENTS

**Bust:** 27 (31, 35, 39, 43)"

**Length:** 20<sup>3</sup>/<sub>4</sub> (22<sup>1</sup>/<sub>2</sub>, 23<sup>1</sup>/<sub>2</sub>, 24<sup>1</sup>/<sub>4</sub>, 24<sup>1</sup>/<sub>2</sub>)"

**Upper Arm:** 10<sup>1</sup>/<sub>2</sub> (11, 12<sup>1</sup>/<sub>2</sub>, 13, 13<sup>1</sup>/<sub>2</sub>)"

### MATERIALS

**Yarn:** *Dolce Merino* by **Universal Yarn** (50% fine merino, 50% micro fiber; 126 yd / 50g) color #416 Brook Green 7 (9, 10, 12, 13) balls

**Needles:** US Size 6 (4.0mm) straight needles OR SIZE TO OBTAIN GAUGE

US Size 4 (3.5 mm) straight needles

**Notions:** cable needle, stitch holders, 6 – 1" plastic buttons, yarn needle

### GAUGE

22 sts x 32 rows = 4" in St st on larger needles

1 rep Diamond Panel = 2<sup>1</sup>/<sub>2</sub>"

**SAVE TIME, CHECK YOUR GAUGE**

### ABBREVIATIONS

**beg** – beginning

**dec(\*d)** – decrease(d)

**inc(\*d)** – increase(d)

**K2tog** – knit two stitches together

**P2tog** – purl two stitches together

**patt** – pattern

**pwise** – purlwise

**rem** – remaining

**rep** – repeat

**RS** – right side

**sl** – slip

**SSK** – slip, slip, knit

**st(s)** – stitch(es)

**WS** – wrong side

*Knit. Relax. Smile. Repeat!*

2009 © Universal Yarn, Inc.

All rights reserved.

[www.universalyarn.com](http://www.universalyarn.com)

This pattern may not be reproduced for business, trade or sale.

## SPECIAL ABBREVIATIONS

**T3F:** sl 2 sts to cable needle and hold at front of work, P1, K2 from cable needle.

**T3B:** sl 1 st to cable needle and hold at back of work, K2, P1 from cable needle.

## DIAMOND PANEL

*(Panel of 16 sts)*

**Row 1 (RS):** T3F, P10, T3B.

**Row 2:** K1, P2, K10, P2, K1.

**Row 3:** P1, T3F, P8, T3B, P1

**Row 4:** K2, P2, K8, P2, K2.

**Row 5:** P2, T3F, P6, T3B, P2.

**Row 6:** K3, P2, K6, P2, K3.

**Row 7:** P3, T3F, P4, T3B, P3.

**Row 8:** K4, P2, K4, P2, K4.

**Row 9:** P4, T3F, P2, T3B, P4.

**Row 10:** K5, P2, K2, P2, K5.

**Row 11:** P5, T3F, T3B, P5.

**Row 12:** K6, P4, K6.

**Row 13:** P6, C4B, P6.

**Row 14:** Rep row 12.

**Row 15:** P5, T3B, T3F, P5.

**Row 16:** Rep row 10.

**Row 17:** P4, T3B, T3F, P4.

**Row 18:** Rep row 8.

**Row 19:** P3, T3B, P4, T3F, P3.

**Row 20:** Rep row 6.

**Row 21:** P2, T3B, P6, T3F, P2.

**Row 22:** Rep row 4.

**Row 23:** P1, T3B, P8, T3F, P1.

**Row 24:** Rep row 2.

**Row 25:** T3B, P10, T3F.

**Row 26:** P2, K12, P2.

Rep rows 1-26 for cable patt.

## BACK

With smaller needles, cast on 126 (142, 158, 174, 190) sts.

**Row 1 (RS):** P2, \* K2, P2; rep from \* to end.

**Row 2:** \* K2, P2; rep from \* to last 2 sts, end K2.

Rep rows 1 & 2, 4 more times.

**Set-up row (RS):** Change to larger needles, P2, [K1, SSK, K2tog, K1, P2] 2 (3, 4, 5, 6) more times, \* K2, P2tog, P10, P2tog, K2, P2, [K1, SSK, K2tog, K1, P2] twice; rep from \* twice more, [K1, SSK, K2tog, K1, P2] 0 (1, 2, 3, 4) times – 104 (116, 128, 140, 152) sts rem.

Work 1 WS row, working sts as they appear.

**Next row (RS):** [P2, K4] 2 (3, 4, 5, 6) times, \*work row 1 of cable patt across 16 sts, [P2, K4] twice; rep from \* twice more, P2, [K4, P2] 0 (1, 2, 3, 4) times. Work even in patt as set for 3 more rows.

## Shape Back

**Dec row (RS):** K1, SSK, work in patt to last 3 sts, end K2tog, K1 – 2 sts dec'd.

Work even in patt for 3 rows. Rep these 4 rows, 5 (5, 5, 6, 6) more times – 92 (104, 116, 126, 138) sts. Work even in patt until piece measures 10 (11, 11, 11, 11)", ending after a WS row.

**Inc row (RS):** K1, M1, work in patt to last st, end M1, K1 – 2 sts inc'd. Work even in patt for 3 rows. Rep these 4 rows, 5 (5, 5, 6, 6) more times, working inc'd sts into 2 x 4 rib patt as before – 104 (116, 128, 140, 152) sts. Work even in patt until piece measures 13½ (14½, 15, 15½, 15½)", ending after a WS row.

## Shape Armholes

At beg of next 2 rows, bind off 5 (7, 10, 11, 12) sts.

**Dec row (RS):** K1, SSK, work in patt to last 3 sts, end K2tog, K1 – 2 sts dec'd.

Work 1 WS row. Rep these 2 rows, 3 (4, 6, 8, 11) more times – 86 (92, 94, 100, 106) sts rem. Work even in patt until armhole measures 7¼ (8, 8½, 8¾, 9)", ending after a WS row.

**Next row (RS):** Bind off 23 (25, 25, 27, 29) sts, sl 40 (42, 44, 46, 48) sts to holder for back neck, join new ball of yarn and bind off rem 23 (25, 25, 27, 29) sts.

## LEFT FRONT

With smaller needles, cast on 72 (80, 88, 96, 104) sts.

**Row 1 (RS):** \* P2, K2; rep from \* to end.

**Row 2:** \* P2, K2; rep from \* to end.

Rep rows 1 & 2, 4 more times.

**Set-up row (RS):** P2, [K1, SSK, K2tog, K1, P2] 2 (3, 4, 5, 6) times, K2, P2tog, P10, P2tog, K2, P2, [K1, SSK, K2tog, K1, P2] twice, K1, K2tog, K3, [P2, K2] three times – 61 (67, 73, 79, 85) sts rem.

Work 1 WS row, working sts as they appear.

**Next row (RS):** P2, [K4, P2] 2 (3, 4, 5, 6) times, work row 1 of cable patt across 16 sts, P2, [K4, P2] twice, K5, [P2, K2] three times.

Cont in patt as set for 3 more rows.

## Shape Left Front

**Dec row (RS):** K1, SSK, work in patt to end – 1 st dec'd. Work even in patt for 3 rows. Rep these 4 rows, 5 (5, 5, 6, 6) more times – 55 (61, 67, 72, 78) sts. Work even in patt until piece measures 10 (11, 11, 11, 11)", ending after a WS row.

**Inc row (RS):** K1, M1, work in patt to last st, end M1, K1 – 2 sts inc'd.

Work even in patt for 3 rows. Rep these 4 rows, 5 (5, 5, 6, 6) more times, working inc'd sts into 2 x 4 rib patt as before – 61 (67, 73, 79, 85) sts. Work even in patt until piece measures 13½ (14½, 15, 15½, 15½)", ending after a WS row.

*Knit. Relax. Smile. Repeat!*

2009 © Universal Yarn, Inc.

All rights reserved.

www.universalyarn.com

This pattern may not be reproduced for business, trade or sale.

## Shape Armholes

At beg of next row (RS), bind off 5 (7, 10, 11, 12) sts.

**Dec row (RS):** K1, SSK, work in patt to end – 1 st dec'd. Work 1 WS row. Rep these 2 rows, 3 (4, 6, 8, 11) more times – 52 (55, 56, 59, 62) sts rem. Work even in patt until armhole measures 4½ (5¼, 5½, 5¾, 5½)”, ending after a RS row.

## Shape Neck

At beg of next row (WS), bind off 21 (22, 23, 24, 25) sts, work to end.

**Dec row (RS):** Work in patt to last 3 sts, end K2tog, K1 – 1 st dec'd.

**Dec row (WS):** P1, P2tog, work in patt to end – 1 st dec'd.

Rep these 2 rows, 1 more time.

Rep Dec row (RS). Work 1 WS row. Rep these 2 rows, 3 more times – 23 (25, 25, 27, 29) sts. Work even until armhole measure 7¼ (8, 8½, 8¾, 9)”, ending after a WS row. Bind off rem sts.

## RIGHT FRONT

With smaller needles, cast on 72 (80, 88, 96, 104).

**Row 1 (RS):** \* P2, K2; rep from \* to end.

**Row 2:** \* P2, K2; rep from \* to end. Rep rows 1 & 2, 2 more times.

**Buttonhole row (RS):** Work 6 sts in patt, yo, P2tog, work in patt to end.

Work even in rib as before for 3 more rows.

**Set-up row (RS):** [K2, P2] three times, K3, K2tog, K1, [P2, K1, K2tog, SSK, K1] twice, P2, K2, P2tog, P10, P2tog, K2, [P2, K1, K2tog, SSK, K1] 2 (3, 4, 5, 6) times, P2 – 61 sts rem.

Work 1 WS row, working sts as they appear.

**Next row (RS):** [K2, P2] three times, K5, [P2, K4] twice, P2, work row 1 of cable patt across 16 sts, [P2, K4] 2 (3, 4, 5, 6) times, P2.

Work as for Left Front rev all shaping and placing 5 more buttonhole rows as above approximately 3 (3¼, 3¼, 3½, 3½)” apart with the last buttonhole approximately 1/4” from neck edge.

## SLEEVES

With smaller needles, cast on 66 (66, 78, 78, 78) sts.

**Row 1 (RS):** K2, \* P2, K2; rep from \* to end.

Work even in 2 x 2 ribbing patt as set for 9 more rows.

**Next row (RS):** [K1, SSK, K2tog, K1, P2] 3 (3, 4, 4, 4) times, K2, P2tog, P10, P2tog, K2, [P2, K1, SSK, K2tog, K1] 3 (3, 4, 4, 4) times – 52 (52, 60, 60, 60) sts.

Work 1 WS row, working sts as they appear.

**Next row (RS):** [K4, P2] 3 (3, 4, 4, 4) times, work row 1 of cable patt across 16 sts, [P2, K4] 3 (3, 4, 4, 4) times.

Work even in patt as set until piece measures 2½ (3, 3½, 3¾, 4)”, ending after a WS row.

**Inc row (RS):** K1, M1, work in patt to last st, end M1, K1 – 2 sts inc'd.

Work even in patt for 3 rows. Rep these 4 rows 1 (2, 2, 3, 4) more times – 56 (58, 66, 68, 70) sts. Work even until piece measures 4½ (5, 5½, 5¾, 6)”, ending after a WS row.

## Shape Cap

**Dec row (RS):** K1, SSK, work in patt to last 3 sts, end K2tog, K1 – 2 sts dec'd.

Work even in patt for 3 rows. Rep these 4 rows, 7 (8, 9, 10, 11) more times – 40 (40, 46, 46, 46) sts. Rep Dec row. Work 1 WS row. Rep these 2 rows, 2 (2, 3, 3, 3) more times. At beg of next 2 rows, bind off 3 sts. At beg of foll 2 rows, bind off 4 sts. Bind off rem 20 (20, 24, 24, 24) sts.

## FINISHING

Sew shoulder seams.

### Neckband

With RS facing and smaller needle, beg at right front neck edge pick up and knit 38 (39, 42, 43, 46) sts to right shoulder, 40 (42, 44, 46, 48) across back neck, and 38 (39, 42, 43, 46) sts to left front neck – 116 (120, 128, 134, 140) sts.

**Row 1 (WS):** Sl 1 pwise, P1, \* K2, P2; rep from \* to end.

**Row 2:** Sl 1 pwise, K1, \* P2, K2; rep from \* to end.

Work even in 2 x 2 ribbing as set for 5 more rows. Bind off all sts in rib.

Set in sleeves. Sew sleeve and side seams. Sew buttons opposite buttonholes. Weave in all ends.



*Knit. Relax. Smile. Repeat!*

2009 © Universal Yarn, Inc.

All rights reserved.

[www.universalyarn.com](http://www.universalyarn.com)

This pattern may not be reproduced for business, trade or sale.