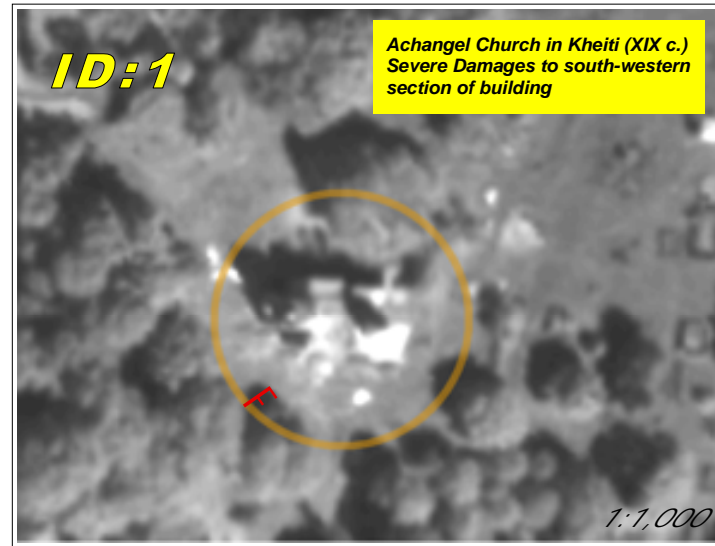


SATELLITE DAMAGE ASSESSMENT FOR CULTURAL HERITAGE MONUMENTS, SOUTH OSSETIA, GEORGIA

Damage Assessment with WorldView-1 Satellite Imagery Recorded on 19 August 2008

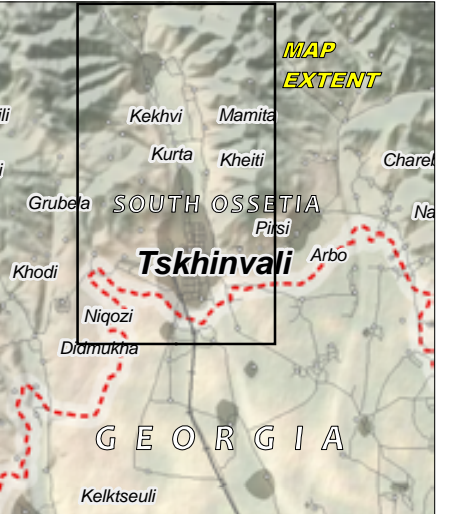
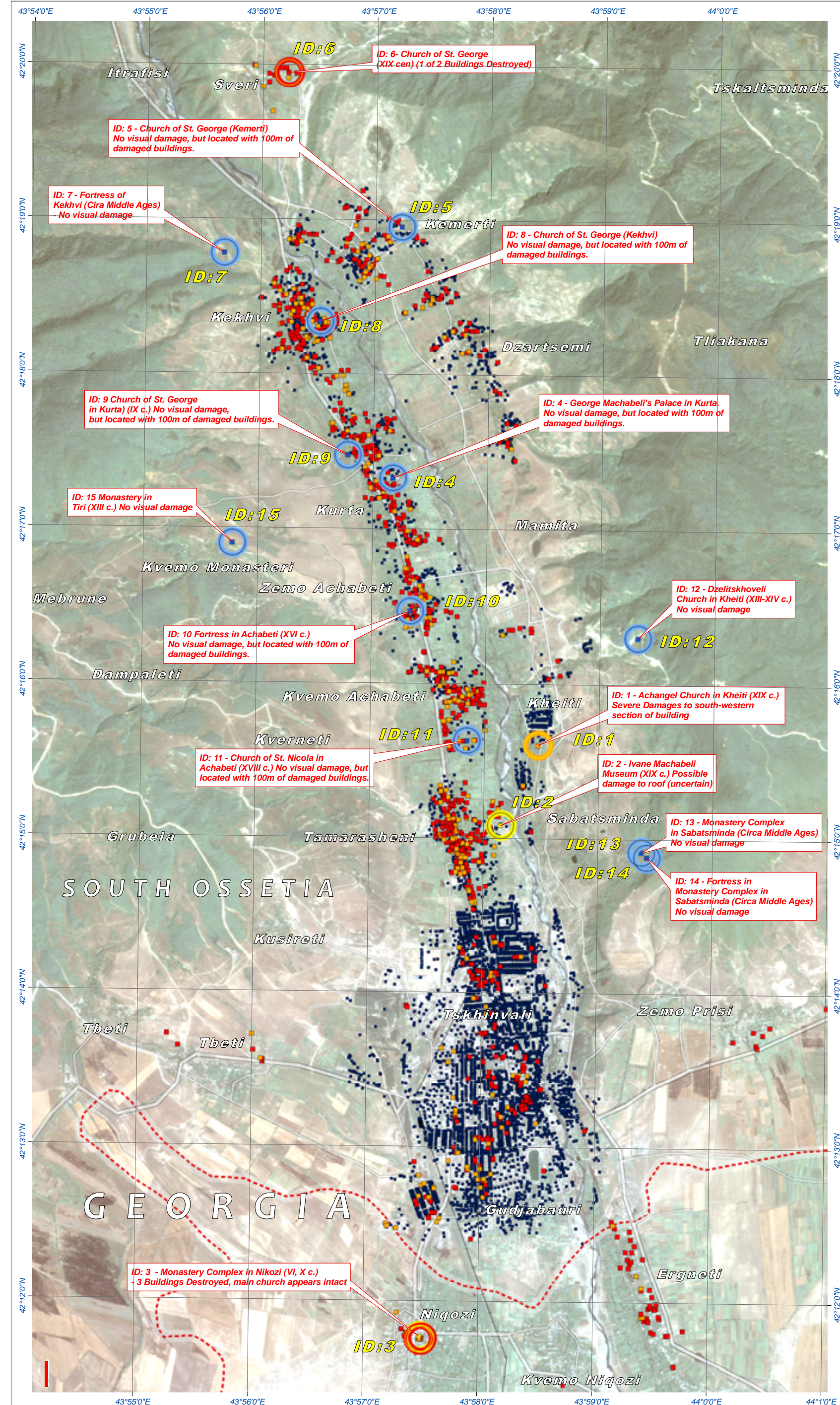
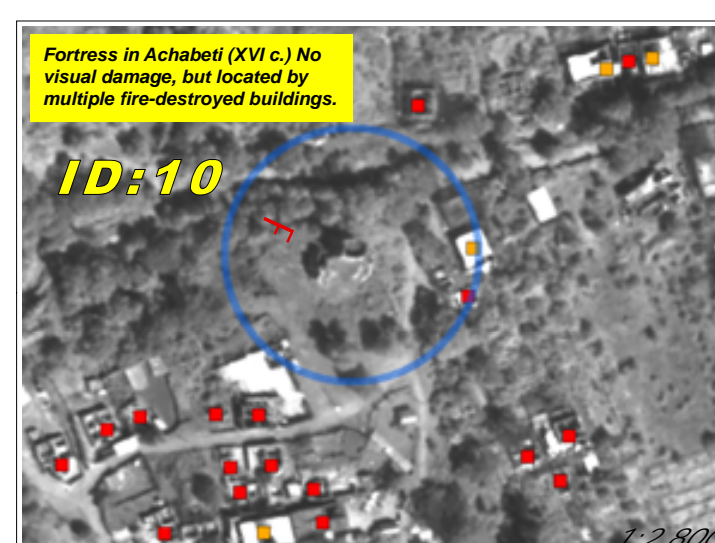
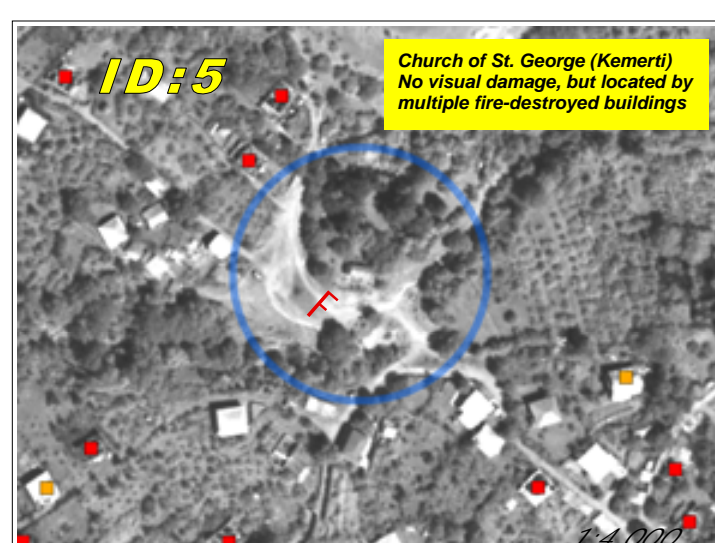
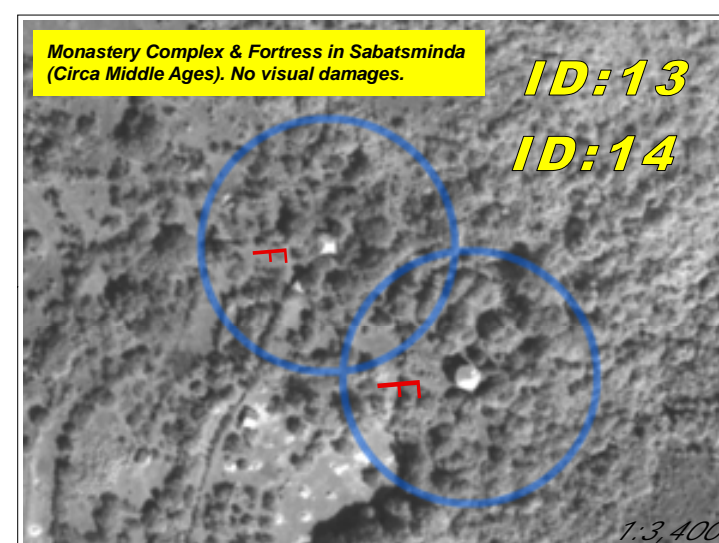
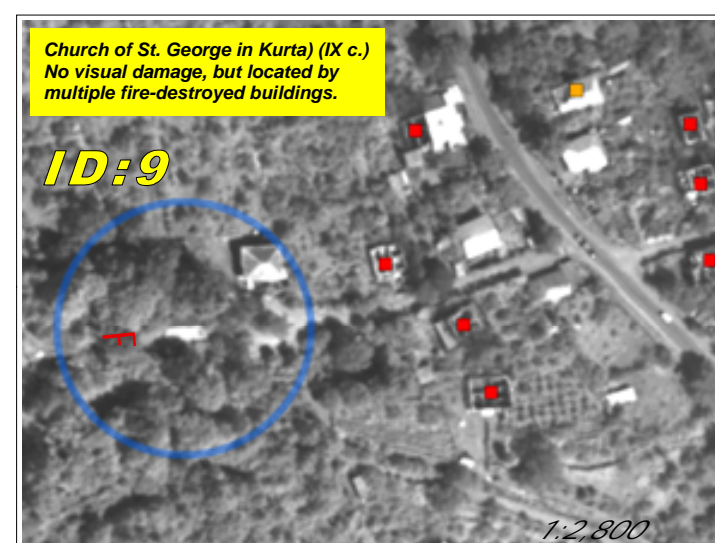
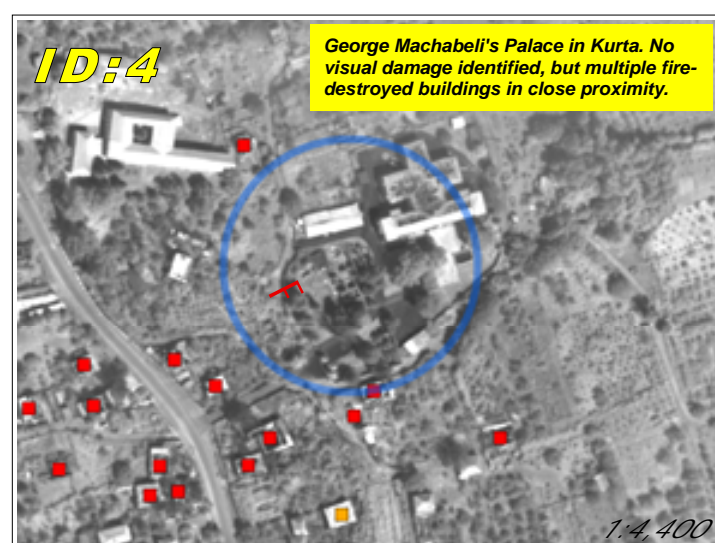
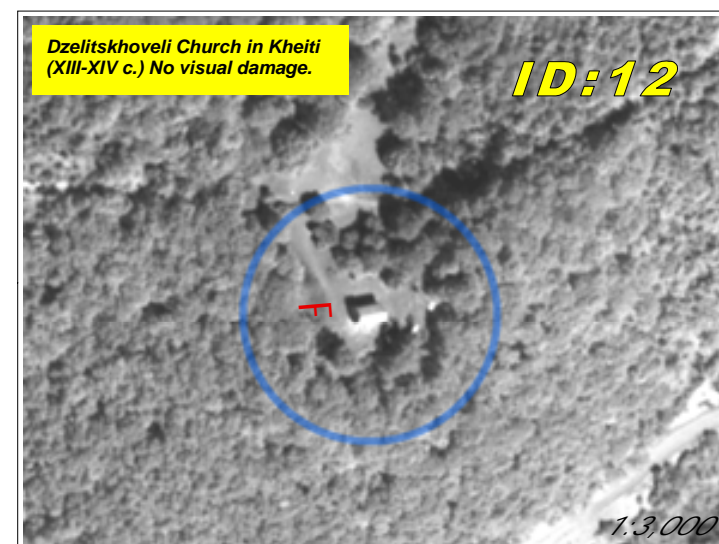
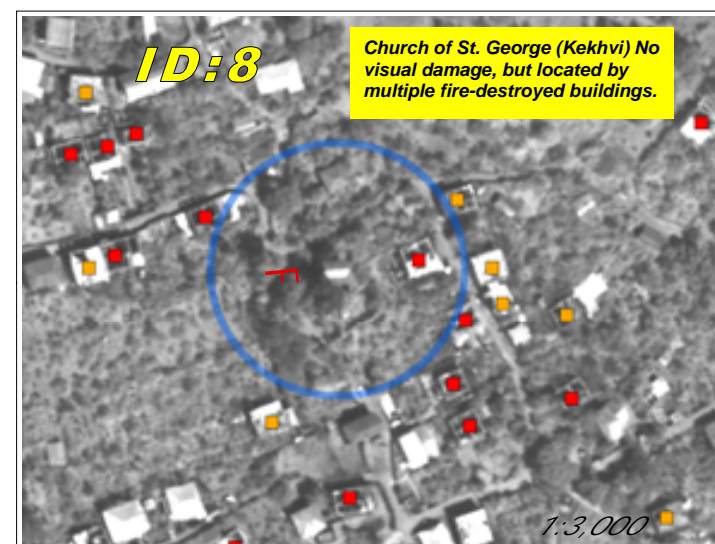
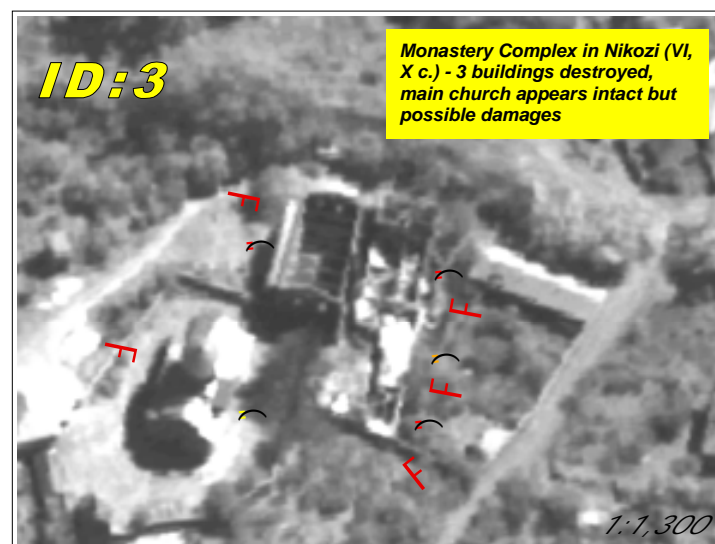
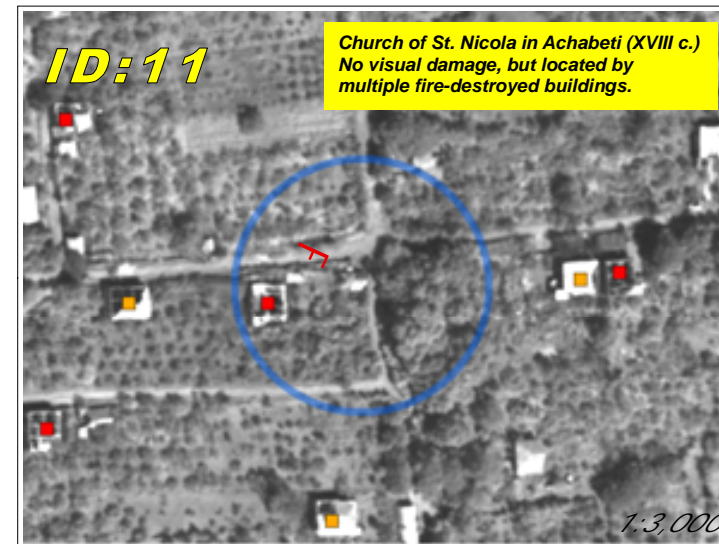
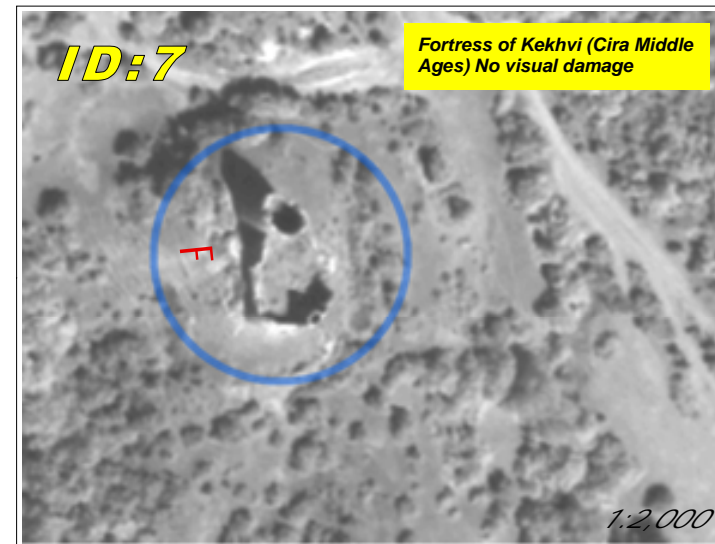
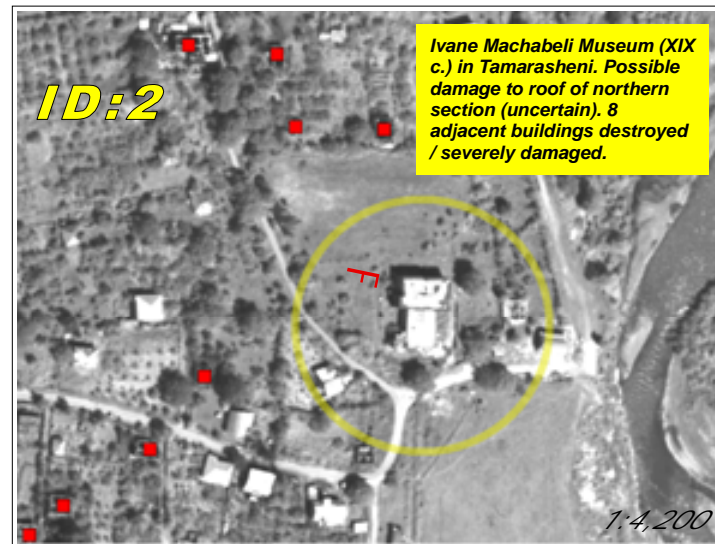
Fire & Armed Conflict 11 September 2008
Version 1.0
UNOSAT-2008-000170



Preliminary Damage Assessment Summary:

- 3 sites have buildings which are either severely damaged or destroyed;
- 1 site has possible damage to the roof;
- 11 sites have no visible damages, however 6 are located within 100 meters of buildings which were damaged in the conflict and thus may have less-severe damages.

Notes: 1) building sites with 'no visible damage' does not imply no damages, only that none were visually identified with the available satellite imagery. Satellite-derived damage assessments can generally identify only a low percentage of buildings with limited damages.
2) Affected buildings were classified either as destroyed or severely damaged by standard satellite image interpretation methods. Destroyed buildings have been defined either by the total collapse of the structure or when it was standing but with less than 50% of the roof still intact. Severely damaged buildings were defined as having visible structural damage to a portion of one wall, or where a section of the roof was damaged but with over 50% of the roof still intact.



Analysis Description

This map presents a satellite-based damage assessment for the cultural heritage monuments within the main zone of conflict north of Tskhinvali, South Ossetia, Georgia following the armed conflict between Georgian and Russian military forces in August 2008. Damaged sites have been identified with WorldView-1 satellite imagery acquired on 19 August 2008 at a spatial resolution of 50cm. Pre-conflict imagery from Google Earth was also used. Please note, this is an initial damage assessment and has not yet been independently validated on the ground. Please send any additions/corrections to the contact information below.

Map Legend

Transport Pts: Airport, Port
Transport Lines: Main Road, Secondary Road, Railroad
Administrative: Approximate South Ossetia Boundary

SATELLITE DAMAGE ASSESSMENT (FOR ALL BUILDINGS)

- Building: Likely Destroyed
- Building: Likely Severely Damaged
- Building: Possible Damage
- Building: No Visual Damage Noted

FOR CULTURAL MONUMENTS

- Building: Likely Destroyed
- Building: Likely Severely Damaged
- Building: Possible Damage
- Building: No Visual Damage Noted



Map Scale for A3: 1:45,000

0 250 500 1,000 1,500 2,000 Meters

Satellite Data: WorldView-1
Resolution: 50 cm
Imagery Date: 19 August 2008
Copyright: Digital Globe (2008)
Source: U.S. Department of State - HIU
Access Rules: NextView "EULA" - 2008
Imagery Date: 19 August 2008
GIS Data: USGS, UNEP, UNOSAT
Heritage Data: Georgian National Commission for UNESCO
Damage Analysis: UNOSAT 2008
Projection: Pulkovo 1995 GK Zone 8N
Datum: Pulkovo 1995

UNOSAT
satellite solutions for all
Contact Information: info@unosat.org
24/7 Hotline: +7 487 4998
www.unosat.org