

Nikon

Capture NX2



Quick Start Guide

En

Thank you for your purchase of Capture NX 2. This *Quick Start Guide* takes first-time users through the steps of installing Capture NX 2 and introduces some of the program's core features. Follow along using the files on the supplied CD to experience how Capture NX 2 can improve your images.

Notes

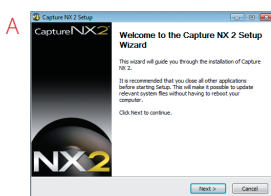
- In addition to being licensed for use in this guide, the images on the supplied CD are available for personal use. They cannot be otherwise used, copied, or distributed without permission of the copyright holder.
- Save where otherwise noted, the illustrations in this guide are from Windows Vista Ultimate but the instructions apply to both Windows and Mac OS.

Installing Capture NX 2

Step 1

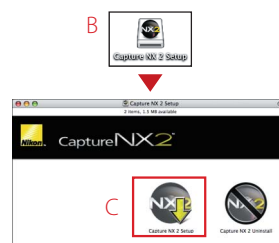
Windows

Insert the Capture NX 2 installer CD into a CD-ROM drive. The installer will start automatically (A).



Mac OS

Insert the Capture NX 2 installer CD into a CD-ROM drive and double-click the CD icon on the desktop (B). Double-click the **Capture NX 2 Setup** icon to start the installer (C).



Step 2

Follow the on-screen instructions to complete installation, using the default installer options where applicable.

Windows

In the last dialog (D), confirm that **Run Capture NX 2** is selected and click **Finish**.



Mac OS

When the dialog shown at right (E) is displayed, confirm that **Run Capture NX 2** is selected and click **Continue**.



Capture NX 2 will now start. Proceed to “A First Look at Capture NX 2” on the following page.

Note

When Capture NX 2 starts, click **Enter Product Key** and enter your name, the name of your organization (optional), and the product key, which may be found on the CD case. **Do not lose the product key.** It is required when installing or upgrading Capture NX 2 and cannot be replaced if lost.

For More Information

For more information on installing Capture NX 2, see page 12 of the *User's Manual*.

A First Look at Capture NX 2

Have you ever found that a photograph looks slightly different than you imagined? The color control point feature in Capture NX 2 makes getting the results you imagined a snap. In this example, we will enhance the blues in the sky without affecting the other colors in the image. Follow along using the sample images on the supplied CD.

01 Click Open Image.

The “Welcome” dialog shown at right is displayed when Capture NX 2 starts. Click **Open Image** in the “New” section.

Tip

To start Capture NX 2:

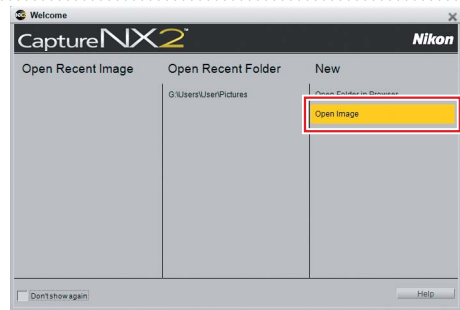
- **Windows:** Double-click the **Capture NX 2** shortcut on the desktop.
- **Mac OS:** Click the **Capture NX 2** icon in the Dock.

For More Information

For more information on starting Capture NX 2 and opening images, see pages 15 and 16 of the *User’s Manual*.

Note

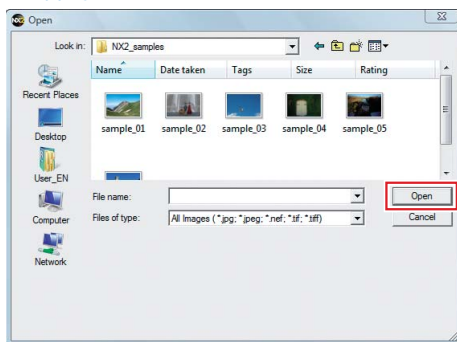
If you removed the Capture NX 2 installer CD after installation, you will need to re-insert the disk to access the images on the CD. If the installer starts when the disk is inserted, click **Cancel** to exit.



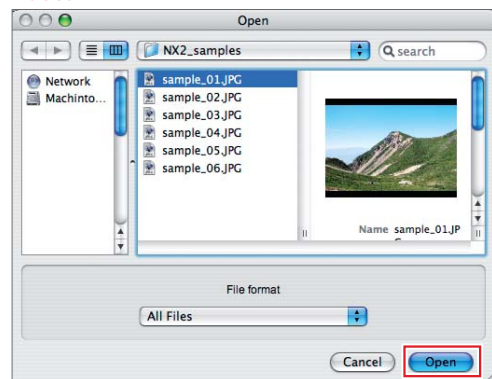
02 Select an image.

Navigate to the “NX2_samples” folder on the CD and select “sample_01”. Click **Open** to open the image in Capture NX 2.

Windows



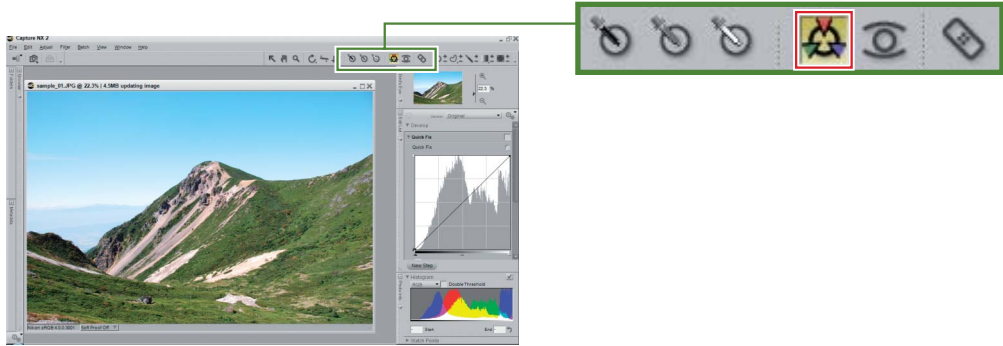
Mac OS



03 Place a color control point.

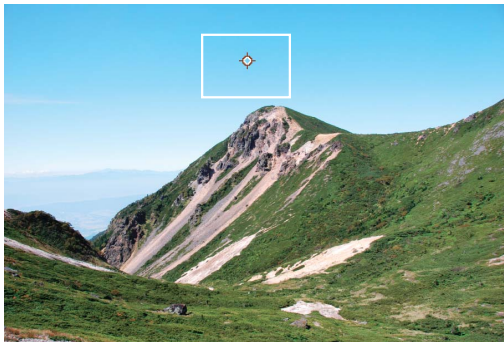
In this example, we will use a color control point to make the sky more vivid without affecting the colors in the rest of the image.

03-1: Click the color control point tool in the toolbar.

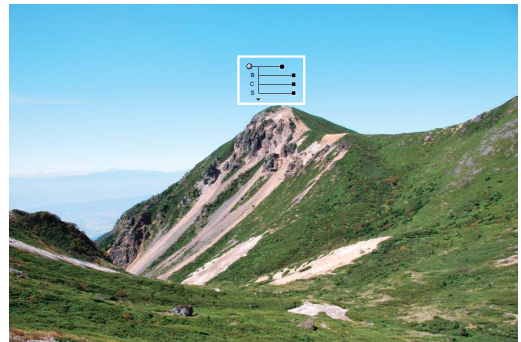


03-2: Click a point in the sky.

Click a point in the sky



A color control point is added to the image



Note

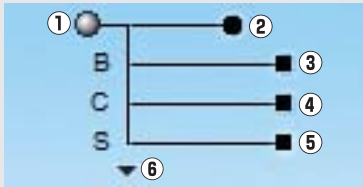
Selected control points can be moved by dragging them to a new position or deleted by pressing the **Delete** key.

For More Information

For more information on color control points, see page 103 of the *User's Manual*.

Tip

Colors in an area centered around the control point can be adjusted by dragging the handles (■ or ■) of its four sliders.

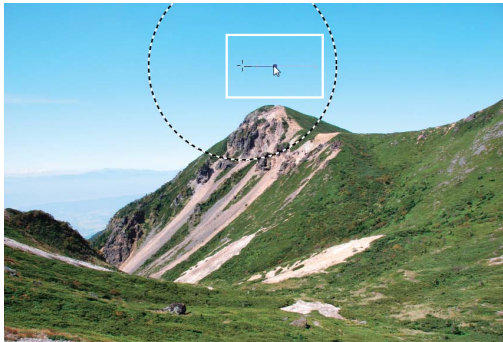


① Color control point	Changes to color and tonality apply to the area or object identified by this point.
② Size slider	Controls the size of the area affected.
③ Brightness slider	Controls brightness.
④ Contrast slider	Controls contrast.
⑤ Saturation slider	Controls saturation (vividness).
⑥ Hide/display triangle	Hide or display all sliders other than the selected slider.

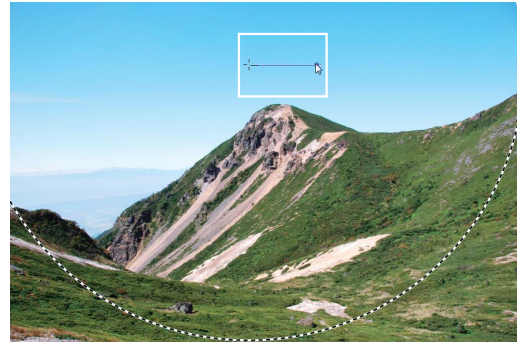
04 Size the control point.

Adjust the size of the control point by dragging the handle of the size slider. The area of influence is shown by a black-and-white dotted line.

Click size slider. Area of influence is indicated by circle with dotted border



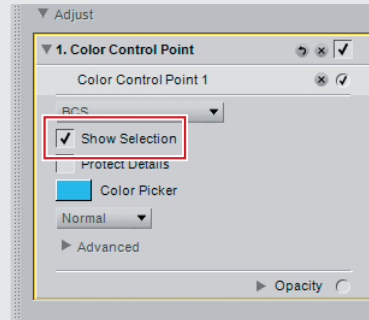
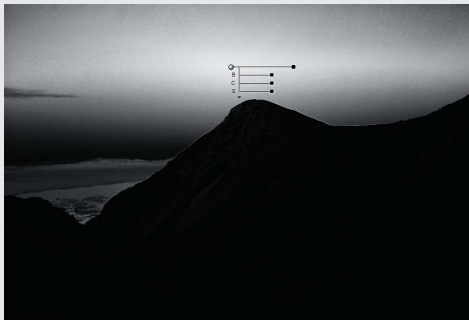
Drag handle outwards until control point covers entire sky



Note: Dotted border is exaggerated for illustrative purposes.

Tip

Choose **Show Selection** in the edit list to view the area affected by the color control point. The area in which the effects are most noticeable is shown in white; unaffected areas are shown in black.



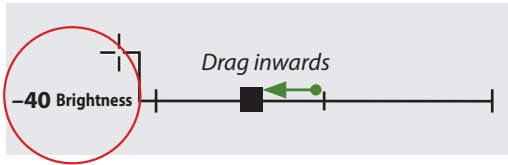
05 Adjust color.

Use the brightness, contrast, and saturation sliders to adjust the selected color. In this example, we will adjust the sliders to increase the vividness of the blues in the sky; feel free to experiment with other values.



Before

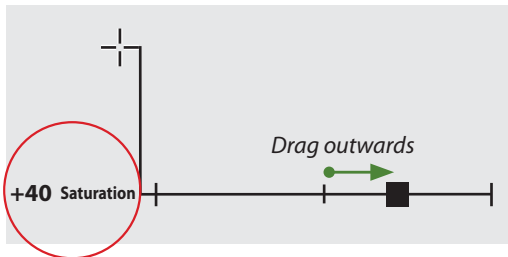
05-1: Reduce brightness (B) to -40.



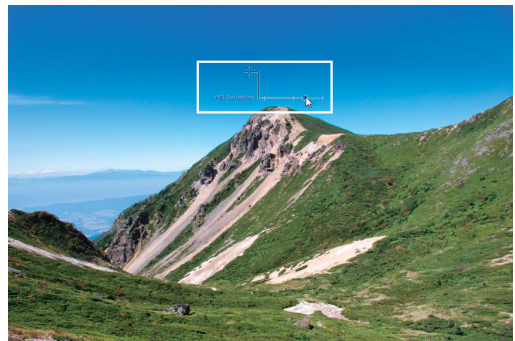
Sky assumes a darker hue



05-2: Increase saturation (S) to +40.



Vividness of blues has increased, reducing effects of haze without affecting other colors in area

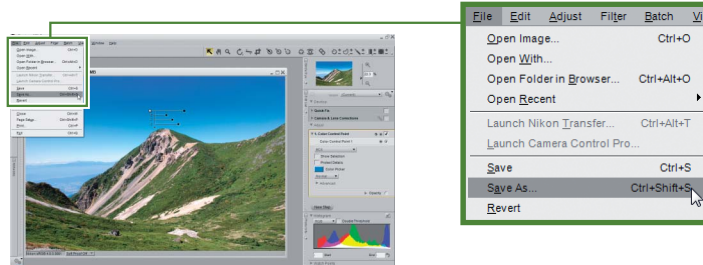


After

06 Save the image.

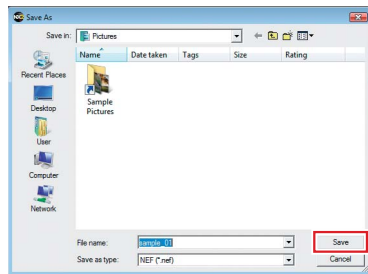
Open the **File** menu in the menu bar and choose **Save As...** to save the image when editing is complete. The following example uses the default file location (in Windows Vista and Mac OS X, the “Pictures” folder; in Windows XP, “My Pictures”) and file type (NEF, or Nikon Electronic Format).

06-1: Open the **File** menu and choose **Save As...**

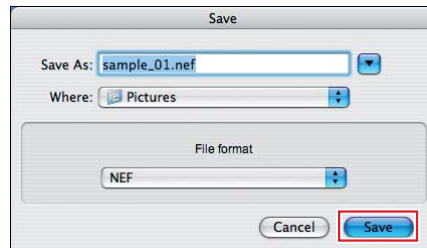


06-2: Click **Save**.

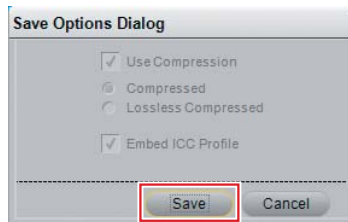
Windows



Macintosh



06-3: The “Save Options Dialog” will be displayed. Click **Save**.



▶ The edited image has now been saved.

Tip

Images can also be saved in JPEG and TIFF formats.

For More Information

For more information on the Save As... option, see page 161 of the *User's Manual*.

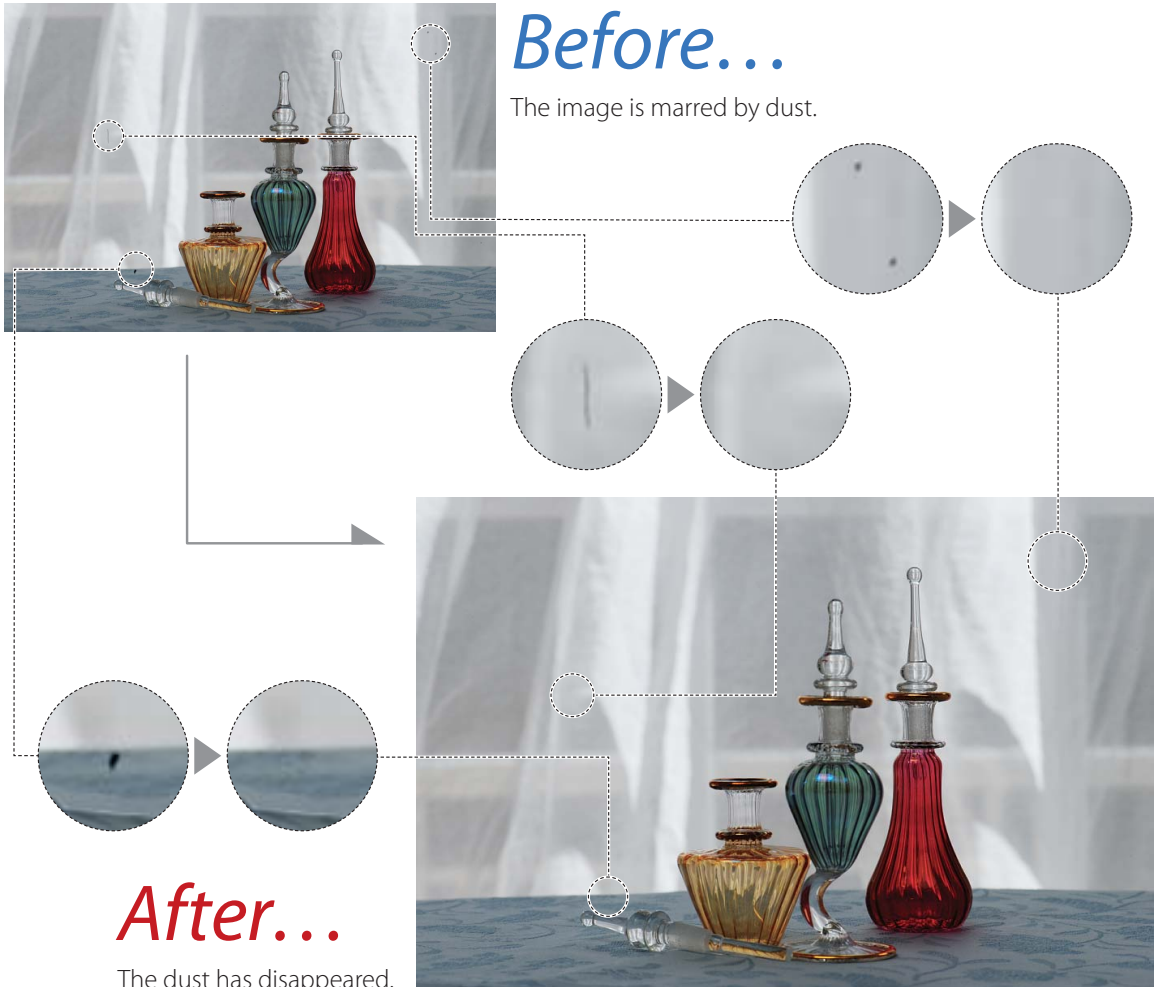
Image Enhancements

Capture NX 2 boasts a host of easy-to-use image enhancement tools, a few of which are introduced below. Follow along using the sample images on the installer CD.

Q. *How do I remove unwanted details?*

A. *Just use the auto retouch brush* (🔧)!


Unwanted blemishes can simply be painted out with the auto retouch brush. The retouched areas blend seamlessly into the background.

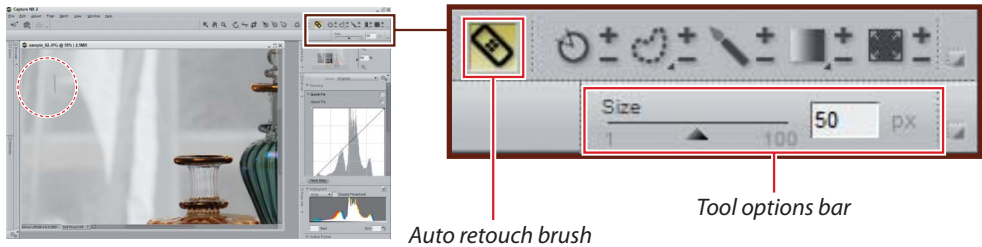


► Open the image.

Open “sample_02.jpg”.

01 Zoom in on the affected area and select the auto retouch brush.

Select the  tool and click the affected area to zoom in. Select the auto retouch brush and choose the brush size using the **Size** slider in the tool options bar. Here we will choose a size of 50, slightly larger than the object we wish to remove.

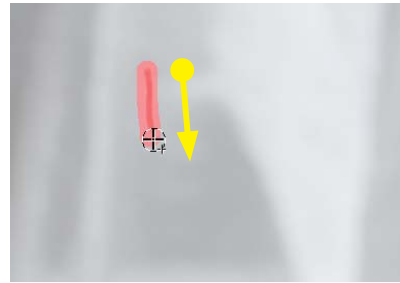


Auto retouch brush

Tool options bar

02 Drag the mouse over the unwanted object.

Drag the mouse to paint over the object you wish to remove. The path of the brush is shown by a translucent red overlay.



03 Release the mouse button.

The image will automatically be retouched to remove the unwanted object. Repeat steps 2 and 3 until all the unwanted objects have been removed.

Tip

If you are not pleased with the results, undo the change and repeat the process using a larger brush size.

For More Information

For more information on the auto retouch brush, see page 108 of the *User's Manual*.



► Save the image.

Save the image using the **Save As...** option in the **File** menu.

Q. How do I crop images?

A. Use the crop tool (☒)!

Use the crop tool to remove unwanted areas from the image.



Before...

This photo is mostly sky.




After...

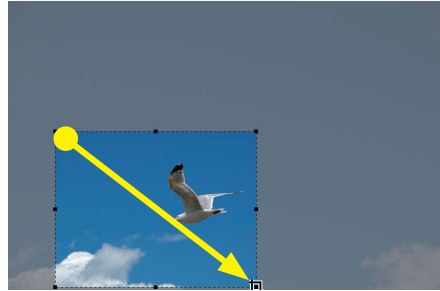
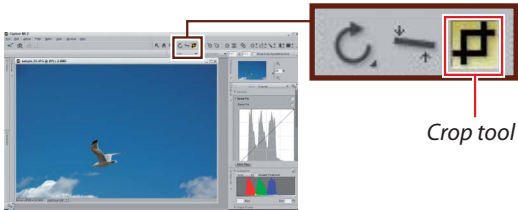
The empty area of the image has been cropped out, leaving only the gull and the clouds.

► Open the image.


Open "sample_03.jpg".

01 Select a crop.

Click the  button in the toolbar to select the crop tool and drag the mouse to select a crop.

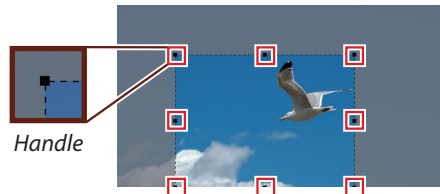


02 Adjust the crop.

Drag the handles () to resize the crop, or position the cursor inside the crop and drag it to a different area of the image.

Tip

The cursor changes when the mouse is over a handle.

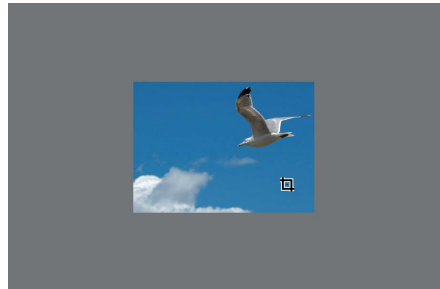


03 Crop the image.

To crop the image, double-click inside the crop or press the **Enter (return)** key.

Tip

To exit without cropping the image, click outside the crop or perform another operation.



► Save the image.

Save the image using the **Save As...** option in the **File** menu.

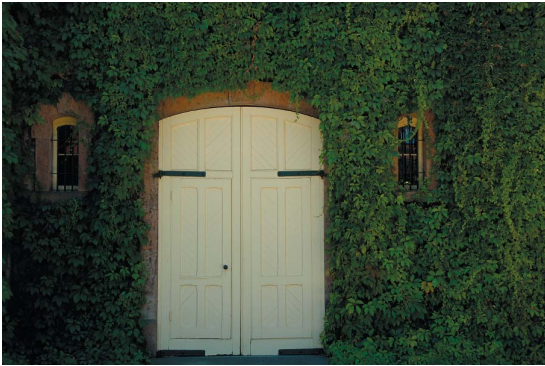
For More Information

For more information on the crop tool, see page 93 of the *User's Manual*.

Q. *Is there a quick way to remove a color cast from an image?*

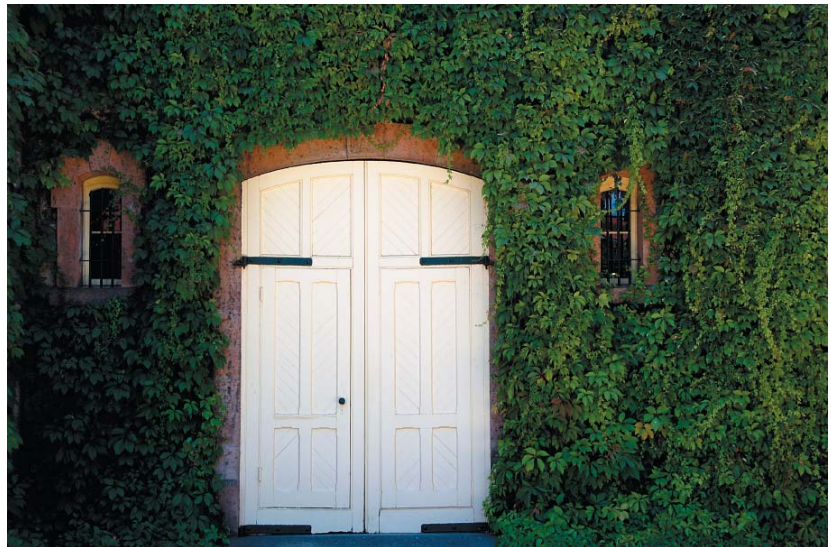
A. *“Auto Levels” optimizes colors instantly.*

The “Auto Levels” tool instantly adjusts tone levels to restore natural colors in photographs taken under unusual lighting.



Before...

The white doors have a yellow cast.



After...

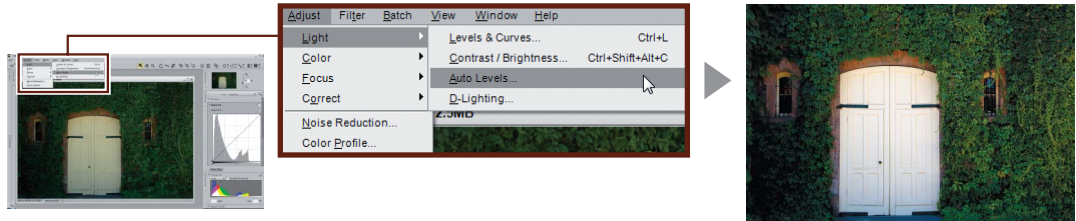
Levels adjusted automatically with the “Auto Levels” tool.

Open the image.

Open “sample_04.jpg”.

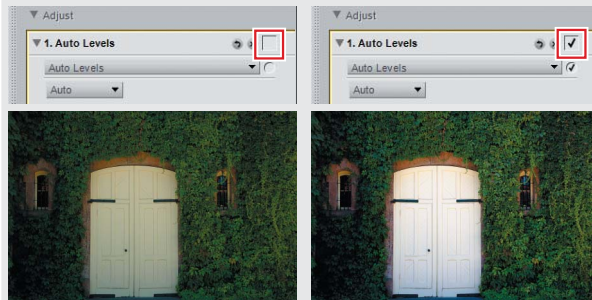
07 Select Auto Levels....

Open the **Adjust** menu in the menu bar and select **Light > Auto Levels...** Levels are adjusted automatically.



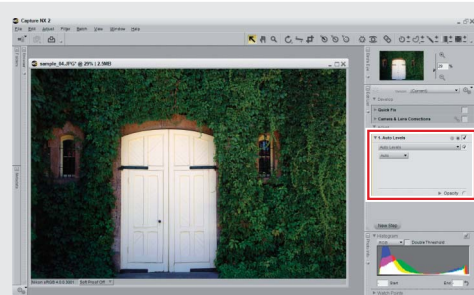
Tip

To display the unmodified image, remove the check from the box to the right of **Auto Levels** in the edit list. Placing a check in the box restores auto levels.



Auto levels not applied

Auto levels applied



Save the image.

Save the image using the **Save As...** option in the **File** menu.

For More Information

For more information on auto levels, see page 187 of the *User's Manual*.

Q. Can I restore details lost in glare or shadow?

A. D-Lighting improves backlit and washed-out scenes.

Use D-Lighting to bring out details in “washed out” or overexposed areas of the image or in backlit or under-lit subjects.



Before...

The area visible at upper left is brightly lit, but the main subject is dark.



After...

D-Lighting brightens the main subject and brings out details.

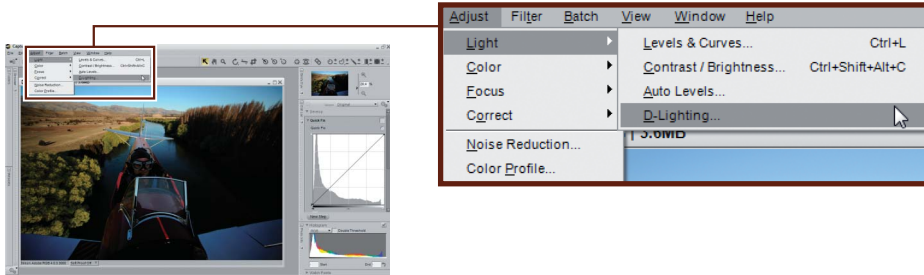


► Open the image.

Open “sample_05.jpg”.

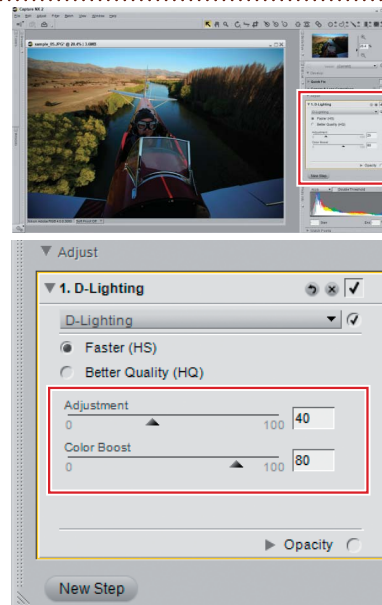
01 Select D-Lighting...

Open the **Adjust** menu in the menu bar and select **Light > D-Lighting...**



02 Adjust settings in the edit list.

Drag the **Adjustment** slider to the right to bring out details in shadows. Use the **Color Boost** slider to adjust colors in the areas affected by D-Lighting. In this example, **Adjustment** is set to 40 and **Color Boost** to 80; feel free to experiment with other values, but be aware that noise will become more obvious if the sliders are set too high.



► Save the image.

Save the image using the **Save As...** option in the **File** menu.

For More Information

For more information on D-Lighting, see page 188 of the *User's Manual*.

Q. *Is there an easy way to improve dull, flat images?*

A. *“Quick Fix” gives quick access to the tools you need.*

The “Quick Fix” section in the edit list can be used to modify brightness, contrast, and saturation for the entire image.



Before...

Some details are lost in shadow.



After...

“Quick Fix” tools have improved brightness and contrast throughout the image

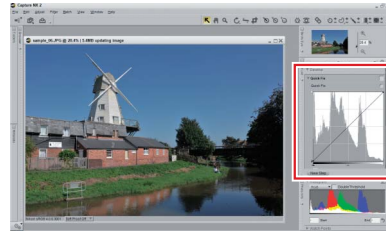


► Open the image.

Open “sample_06.jpg”.

01 Open the “Quick Fix” section.

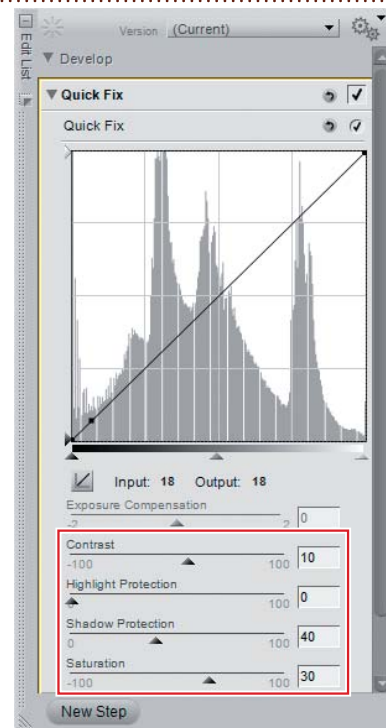
The “Quick Fix” section is displayed in the edit list when an image is opened in Capture NX 2. It contains a “Levels & Curves” tool for adjusting the overall tone range, an “Exposure Compensation” tool for adjusting exposure (NEF/RAW images only), and a set of **Contrast**, **Highlight Protection**, **Shadow Protection**, and **Saturation** sliders (see below).



02 Adjust the “Quick Fix” sliders.

Use the **Highlight Protection** and **Shadow Protection** sliders to bring out details in highlights and shadows. Use **Contrast** slider to adjust contrast and the **Saturation** slider to make colors more vivid. Moving the sliders to the right increases the effect, while moving them to the left decreases the effect. To view all the sliders, it may be necessary to scroll the edit list. The results on the opposite page were obtained with the following values:

- **Contrast:** 10
- **Highlight Protection:** 0
- **Shadow Protection:** 40
- **Saturation:** 30



► Save the image.

Save the image using the **Save As...** option in the **File** menu.

For More Information

For more information on the tools in the “Quick Fix” section, see page 137 of the *User’s Manual*.

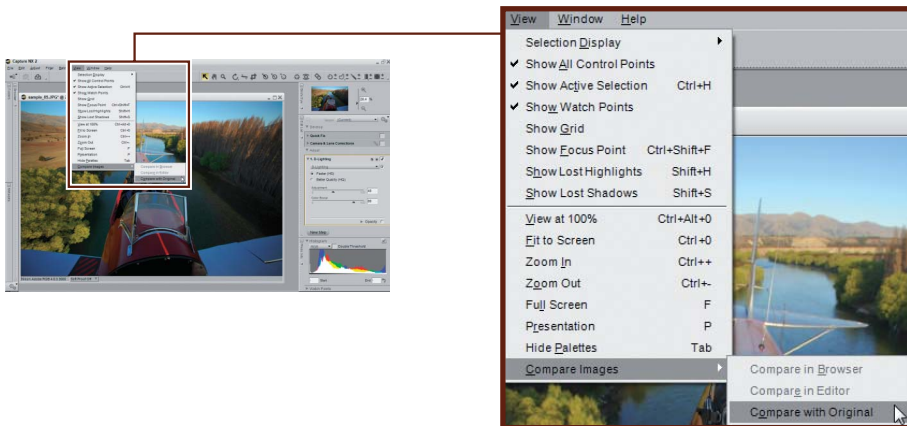
Q. Can I compare the edited image with the original?

A. Use “Compare Images” for before-and-after comparisons.

To determine whether changes are having the desired effect, use the **Compare with Original** option to compare the image with the unmodified original. Here we will use the image we edited on page 15 for a before-and-after comparison.

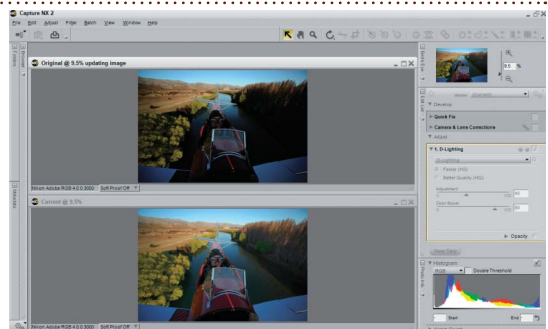
01 **Select Compare with Original.**

After displaying the image you wish to compare, open the **View** menu in the menu bar and select **Compare Images > Compare with Original**.



02 **Compare the images.**

The original is displayed above or to the left of the modified image. Close either panel to end the comparison and view only the modified image.



For More Information

For more information on the tools in the Compare with Original option, see page 234 of the *User's Manual*.

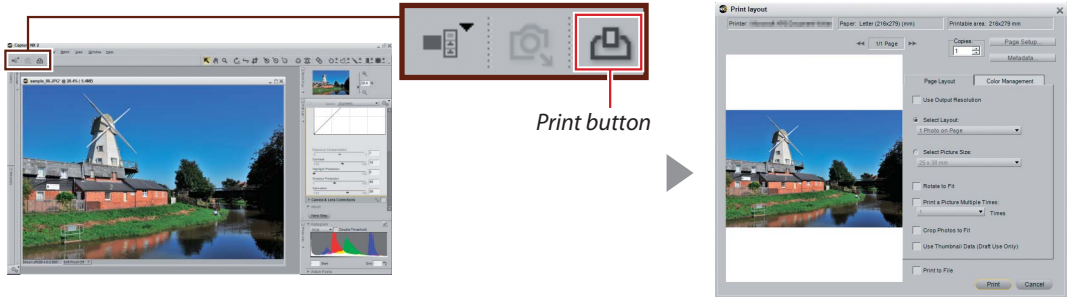
Q. How do I print my images?

A. Use the options in the "Print layout" dialog.

Capture NX 2 makes it easy to print images to fill the page. Here we will print the image we edited on page 16.

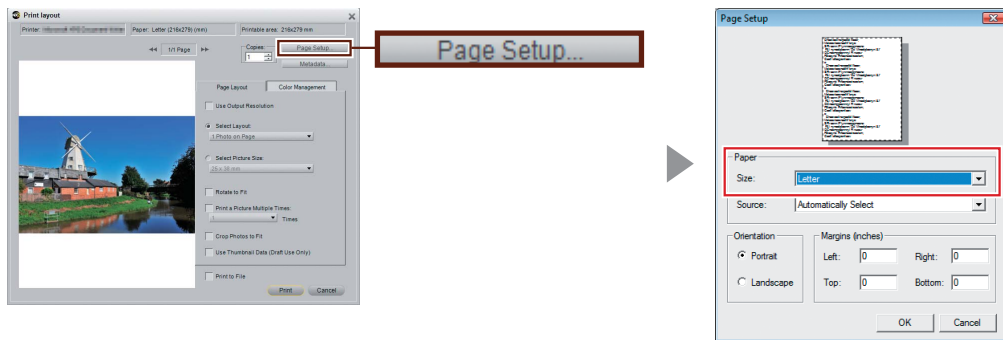
01 Click the button in the activity toolbar.

The "Print layout" dialog will be displayed.



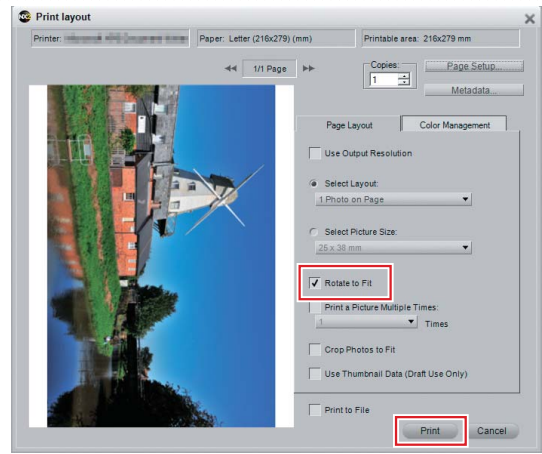
02 Click Page Setup....

The options displayed vary with your printer and operating system. Choose the page size ("Letter" in this example) and orientation and click **OK**.



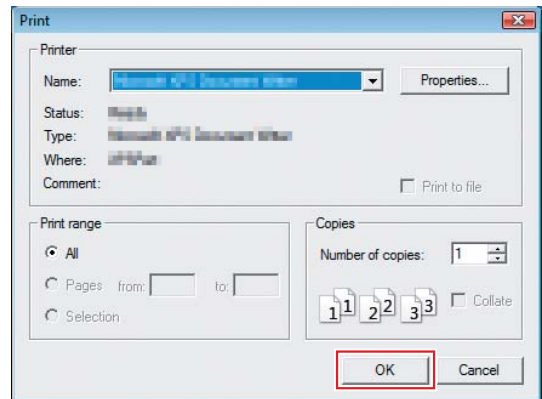
03 Adjust print layout options.

In this example, we will print the image at the largest possible size by selecting **Rotate to Fit**, which automatically rotates images to match page orientation.



04 Click Print.

The print dialog for your printer and operating system will be displayed; click **OK** to start printing.



For More Information

For more information on printing, see page 164 of the *User's Manual*.

This completes the Capture NX 2 Quick Start Guide. To learn more about the many other advanced editing options available in Capture NX 2, including sharpening and blur, see the Capture NX 2 *User's Manual*.

NIKON CORPORATION

Fuji Bldg., 2-3 Marunouchi 3-chome,
Chiyoda-ku, Tokyo 100-8331, Japan

Printed in Europe
SB8D02(11)
6MS55211-02