

ROMA/CIAMPINO (Roma) 105 m. s.l.m. (a.s.l.)

TEMPERATURE

MM	Tm	Tx 1d	Tx 2d	Tx 3d	Txm	Tn 1d	Tn 2d	Tn 3d	Tnm	Tx P85-15	Tn P85-15
Gen(Jan)	7.5	11.4	11.7	12.4	11.9	2.8	2.8	3.6	3.1	5.2	7.8
Feb(Feb)	8.2	13.0	12.6	13.3	13.0	3.5	3.5	3.4	3.5	5.4	7.0
Mar(Mar)	10.2	14.2	15.2	16.3	15.2	4.3	5.1	6.0	5.2	5.8	6.4
Apr(Apr)	12.6	17.2	17.0	18.8	17.7	7.4	6.8	8.3	7.5	6.2	5.4
Mag(May)	17.2	20.9	22.9	24.3	22.8	10.4	11.8	12.7	11.6	7.4	5.2
Giu(Jun)	21.1	26.1	26.6	28.1	26.9	14.5	15.1	16.3	15.3	6.6	5.0
Lug(Jul)	24.1	29.5	30.1	31.0	30.3	17.5	18.0	18.5	18.0	5.4	4.6
Ago(Aug)	24.5	31.6	31.1	29.1	30.6	18.9	18.7	17.5	18.3	6.4	4.8
Set(Sep)	20.8	27.6	26.7	25.2	26.5	15.9	15.2	14.5	15.2	6.2	5.2
Ott(Oct)	16.4	23.0	21.9	19.6	21.4	12.7	11.7	9.7	11.3	6.6	7.2
Nov(Nov)	11.4	17.9	15.9	13.9	15.9	8.5	7.1	5.1	6.9	6.6	8.0
Dic(Dec)	8.4	13.0	12.7	12.0	12.6	4.4	4.5	3.8	4.2	5.8	8.4
MM	NgTn ≤ 0	NgTn ≤ -5	NgTx ≥ 25	NgTx ≥ 30	GrGi >0	GrGi >5	GrGi _18	Txx	An Tx	Tnn	An Tn
Gen(Jan)	6.7	0.4	0.0	0.0	232	80	325	19.8	1971	-11.0	1985
Feb(Feb)	4.9	0.0	0.0	0.0	231	91	275	21.2	1978	-4.4	1993
Mar(Mar)	2.1	0.1	0.1	0.0	315	161	241	26.6	1981	-5.6	1971
Apr(Apr)	0.0	0.0	0.3	0.0	374	226	161	27.2	2000	0.0	1987
Mag(May)	0.0	0.0	8.8	0.0	535	380	47	33.0	1977	3.8	1987
Giu(Jun)	0.0	0.0	22.2	5.2	631	481	4	37.8	1982	7.8	1980
Lug(Jul)	0.0	0.0	30.3	17.6	752	596	0	39.4	1983	10.6	1978
Ago(Aug)	0.0	0.0	30.3	18.6	762	606	0	40.6	1981	10.0	1978
Set(Sep)	0.0	0.0	22.0	2.8	629	478	5	38.4	1982	5.6	1971
Ott(Oct)	0.0	0.0	4.8	0.0	506	352	66	30.0	2000	0.8	1981
Nov(Nov)	1.0	0.0	0.0	0.0	344	193	200	25.0	1971	-5.2	1973
Dic(Dec)	4.3	0.0	0.0	0.0	259	105	296	20.2	1989	-4.8	1996

PRECIPITAZIONI E FENOMENI (PRECIPITATION AND PHENOMENA)

MM	RTot	RQ0	RQ1	RQ2	RQ3	RQ4	RQ5	Rx12a	Rx12b	Rx24	An Rx24
Gen(Jan)	66.9	0.0	8.9	47.0	66.9	109.5	164.0	32.0	50.4	63.4	1978
Feb(Feb)	73.3	0.0	15.4	55.8	68.5	107.7	180.6	60.4	39.2	66.0	1984
Mar(Mar)	57.8	0.0	32.0	43.4	61.3	77.6	123.6	34.4	31.8	36.0	1988
Apr(Apr)	80.5	0.0	20.7	56.8	88.1	126.9	234.5	30.6	41.6	48.0	1999
Mag(May)	52.8	1.3	27.1	44.0	54.5	68.6	137.4	26.0	56.8	65.0	1998
Giu(Jun)	34.0	1.4	11.1	23.3	29.6	45.4	127.6	53.0	50.2	53.0	1983
Lug(Jul)	19.2	0.0	0.5	5.9	16.5	41.8	71.8	22.0	57.8	57.9	1990
Ago(Aug)	36.8	0.1	5.8	10.6	36.2	81.3	113.5	47.0	42.2	52.0	1973
Set(Sep)	73.3	3.8	29.4	57.6	81.4	109.5	158.5	42.6	55.0	55.0	1999
Ott(Oct)	113.3	10.6	43.6	84.1	128.5	165.4	262.0	74.0	81.2	120.0	1978
Nov(Nov)	115.4	6.9	40.3	81.2	145.4	179.8	245.8	61.6	47.8	109.4	1997
Dic(Dec)	81.0	1.5	46.9	66.3	82.5	110.8	192.5	65.2	41.4	66.6	1990
MM	NgR >1	NgR >5	NgR >10	NgR >50	Ng Fog	Ux%	Un%	Ng h6 Nuv≤4	Ng h6 Nuv>4	Ngh18 Nuv≤4	Ngh18 Nuv>4
Gen(Jan)	7.0	3.7	2.1	0.1	2.1	93	59	16.5	14.6	16.4	14.6
Feb(Feb)	7.6	4.0	2.4	0.1	1.4	92	53	14.5	13.8	14.7	13.6
Mar(Mar)	7.6	3.9	2.1	0.0	1.2	93	49	14.8	16.2	14.6	16.4
Apr(Apr)	9.2	5.2	2.9	0.0	1.7	94	51	14.1	15.9	12.0	18.0
Mag(May)	6.2	3.3	2.0	0.0	1.4	93	48	17.0	14.0	14.6	16.5
Giu(Jun)	4.3	1.9	1.2	0.1	0.5	92	43	20.3	9.4	18.8	11.0
Lug(Jul)	2.1	1.2	0.6	0.0	0.3	91	40	25.7	5.4	23.6	7.3
Ago(Aug)	3.3	1.8	1.1	0.0	0.5	91	41	25.1	5.8	23.0	8.0
Set(Sep)	6.2	4.0	2.4	0.1	0.3	93	46	19.7	10.1	19.1	10.9
Ott(Oct)	8.2	5.4	3.9	0.2	0.9	94	55	16.7	14.3	18.4	12.6
Nov(Nov)	9.7	6.3	4.1	0.1	1.8	94	62	15.1	15.0	16.1	13.8
Dic(Dec)	8.0	4.8	2.8	0.1	1.9	94	63	15.8	15.2	16.4	14.5

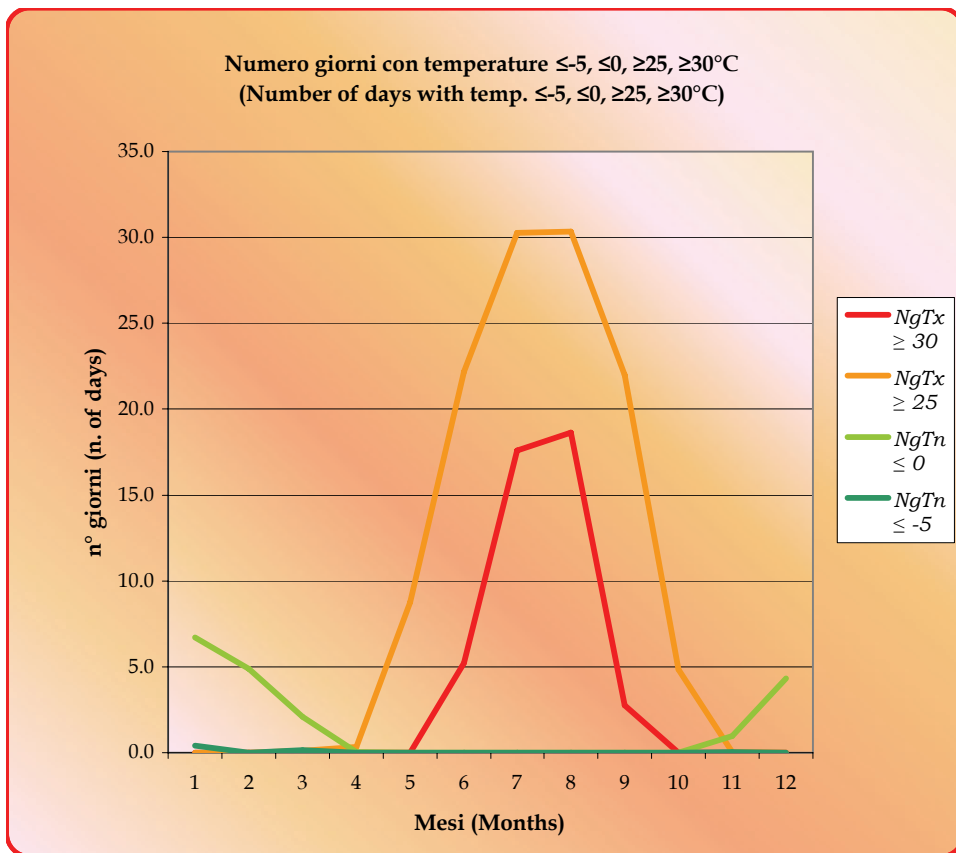
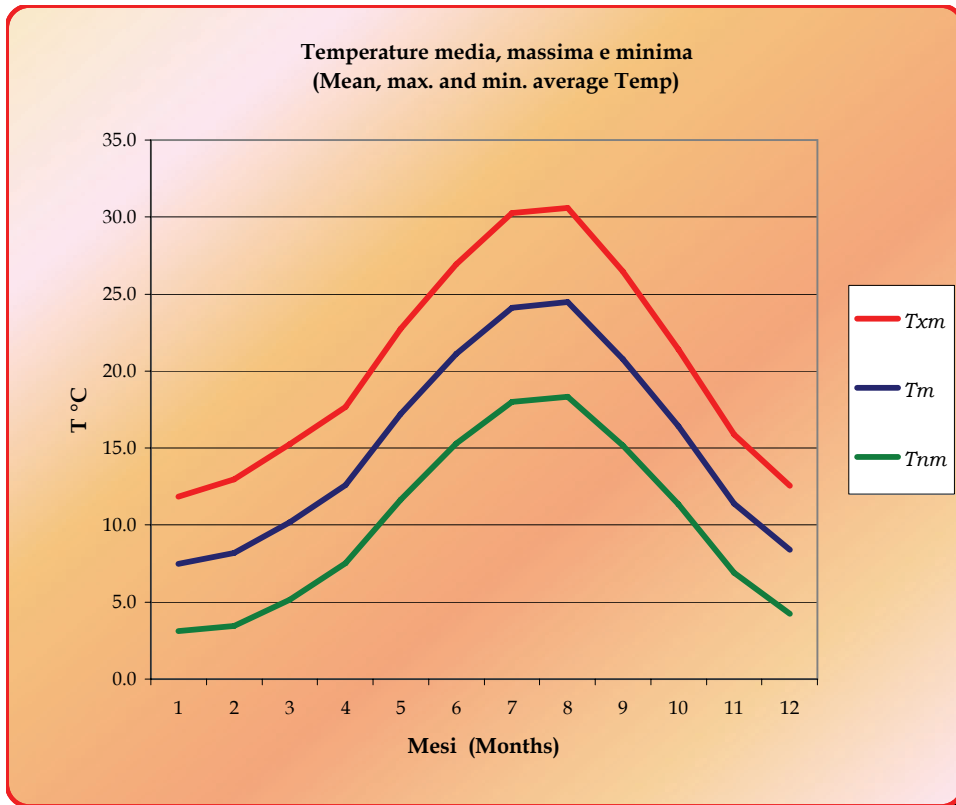
ROMA/CIAMPINO (Roma) 105 m. s.l.m. (a.s.l.)													
DISTRIBUZIONE DEI VENTI (WIND DISTRIBUTION) - HH 00													
MM	Calme Calm	N 1-10	N 11-20	N >20	NE 1-10	NE 11-20	NE >20	E 1-10	E 11-20	E >20	SE 1-10	SE 11-20	SE >20
Gen(Jan)	34.16	4.96	2.26	0.43	22.09	1.83	0.00	7.11	1.19	0.00	4.96	3.66	1.08
Feb(Feb)	32.47	4.72	1.77	0.24	17.00	2.13	0.00	9.68	1.53	0.00	9.33	3.78	0.71
Mar(Mar)	37.65	4.10	2.27	0.00	11.65	1.40	0.00	7.12	1.19	0.11	9.06	3.67	2.05
Apr(Apr)	41.00	2.67	0.56	0.11	8.78	0.89	0.00	8.11	1.11	0.00	6.89	2.67	1.00
Mag(May)	47.85	3.98	0.11	0.00	8.39	0.11	0.00	7.74	0.22	0.00	7.74	1.61	0.00
Giu(Jun)	49.89	1.45	0.11	0.00	5.93	0.00	0.00	9.40	0.45	0.00	9.17	1.79	0.00
Lug(Jul)	51.35	2.80	0.32	0.00	6.35	0.22	0.00	8.07	0.11	0.00	9.80	0.75	0.11
Ago(Aug)	52.10	2.16	0.22	0.00	4.75	0.65	0.00	10.46	0.22	0.00	11.76	0.54	0.32
Set(Sep)	44.32	3.12	0.00	0.00	9.47	0.45	0.00	10.58	0.67	0.00	11.80	3.34	0.33
Ott(Oct)	38.11	4.52	0.97	0.00	15.50	1.18	0.00	9.58	0.54	0.00	8.18	4.52	0.65
Nov(Nov)	35.78	6.78	1.67	0.33	15.56	1.56	0.00	7.33	0.89	0.00	4.89	4.44	1.33
Dic(Dec)	32.33	6.79	2.37	0.32	20.15	3.13	0.11	6.47	1.62	0.00	4.09	3.34	1.40
MM	S 1-10	S 11-20	S >20	SW 1-10	SW 11-20	SW >20	W 1-10	W 11-20	W >20	NW 1-10	NW 11-20	NW >20	Vxx
Gen(Jan)	4.74	7.76	0.54	0.65	0.65	0.00	0.54	0.11	0.00	1.08	0.11	0.00	62
Feb(Feb)	6.26	6.26	0.59	0.71	0.71	0.00	0.47	0.12	0.24	1.06	0.12	0.00	70
Mar(Mar)	8.41	5.61	0.43	2.27	0.65	0.11	0.76	0.11	0.00	1.08	0.11	0.11	68
Apr(Apr)	14.11	6.78	0.67	1.56	1.11	0.00	1.00	0.00	0.00	1.00	0.00	0.00	69
Mag(May)	12.90	4.73	0.32	2.04	0.54	0.00	1.29	0.00	0.00	0.43	0.00	0.00	65
Giu(Jun)	12.86	3.47	0.34	2.80	0.45	0.00	0.78	0.11	0.00	0.89	0.11	0.00	47
Lug(Jul)	14.64	3.12	0.11	0.97	0.11	0.00	0.75	0.11	0.00	0.32	0.00	0.00	80
Ago(Aug)	12.73	1.62	0.22	1.29	0.43	0.00	0.22	0.00	0.00	0.32	0.00	0.00	66
Set(Sep)	8.91	2.90	0.56	1.78	0.11	0.11	0.33	0.45	0.11	0.56	0.11	0.00	65
Ott(Oct)	5.81	6.46	0.32	0.97	0.75	0.00	0.86	0.00	0.00	0.75	0.22	0.00	84
Nov(Nov)	5.44	8.22	1.00	1.00	1.78	0.11	0.44	0.44	0.00	0.78	0.00	0.00	75
Dic(Dec)	5.06	7.76	0.43	1.72	1.08	0.00	0.22	0.54	0.00	0.54	0.43	0.11	70

DISTRIBUZIONE DEI VENTI (WIND DISTRIBUTION) - HH 06													
MM	Calme Calm	N 1-10	N 11-20	N >20	NE 1-10	NE 11-20	NE >20	E 1-10	E 11-20	E >20	SE 1-10	SE 11-20	SE >20
Gen(Jan)	30.96	4.10	2.16	0.11	29.13	2.70	0.00	5.83	1.73	0.00	3.78	4.31	0.97
Feb(Feb)	32.43	4.14	2.49	0.12	28.76	2.25	0.00	5.21	1.54	0.00	3.79	4.02	0.59
Mar(Mar)	36.54	4.97	2.05	0.22	21.73	1.95	0.00	6.27	0.97	0.00	4.76	4.11	1.41
Apr(Apr)	41.34	6.26	0.89	0.11	17.43	1.56	0.00	5.47	0.56	0.00	4.36	3.69	0.67
Mag(May)	45.58	10.02	0.54	0.00	17.78	0.75	0.00	3.99	0.22	0.00	2.69	2.05	0.54
Giu(Jun)	45.05	10.47	0.45	0.00	16.55	0.45	0.00	3.15	0.11	0.00	2.03	2.59	0.11
Lug(Jul)	47.52	9.16	0.43	0.00	21.88	0.75	0.00	3.77	0.00	0.00	3.02	1.19	0.00
Ago(Aug)	49.95	7.69	0.11	0.00	19.93	0.43	0.00	6.07	0.11	0.00	4.12	1.73	0.11
Set(Sep)	44.59	5.29	0.56	0.00	23.87	0.23	0.00	6.87	0.34	0.00	3.94	3.04	0.23
Ott(Oct)	37.00	6.26	0.32	0.00	23.52	0.97	0.00	8.63	0.76	0.00	4.53	4.64	0.65
Nov(Nov)	34.00	5.78	1.67	0.11	23.22	2.00	0.00	7.33	1.22	0.00	4.00	4.00	1.00
Dic(Dec)	31.21	5.72	2.27	0.22	24.73	2.92	0.11	5.40	2.16	0.11	3.67	4.32	0.65
MM	S 1-10	S 11-20	S >20	SW 1-10	SW 11-20	SW >20	W 1-10	W 11-20	W >20	NW 1-10	NW 11-20	NW >20	
Gen(Jan)	4.75	5.83	0.76	0.54	0.32	0.00	0.22	0.32	0.00	0.76	0.76	0.00	
Feb(Feb)	4.85	6.27	0.83	0.36	0.59	0.00	0.59	0.24	0.00	0.59	0.36	0.00	
Mar(Mar)	5.30	6.38	0.54	0.97	0.22	0.00	1.19	0.11	0.00	0.22	0.11	0.00	
Apr(Apr)	6.03	5.92	0.45	1.45	1.01	0.00	1.34	0.45	0.00	0.89	0.00	0.00	
Mag(May)	6.47	5.60	0.00	1.62	0.54	0.00	0.43	0.00	0.00	0.97	0.22	0.00	
Giu(Jun)	7.88	5.29	0.11	2.82	0.34	0.00	1.01	0.11	0.00	1.35	0.00	0.00	
Lug(Jul)	5.06	3.66	0.11	1.40	0.65	0.00	0.65	0.00	0.00	0.65	0.11	0.00	
Ago(Aug)	5.42	1.52	0.00	1.08	0.22	0.00	0.43	0.00	0.00	0.98	0.00	0.00	
Set(Sep)	4.62	4.39	0.23	0.56	0.34	0.00	0.45	0.11	0.00	0.34	0.00	0.00	
Ott(Oct)	4.85	4.75	0.43	0.97	0.54	0.00	0.54	0.11	0.00	0.54	0.00	0.00	
Nov(Nov)	4.00	6.89	1.11	1.33	0.78	0.00	0.33	0.11	0.00	0.89	0.22	0.00	
Dic(Dec)	4.00	7.24	1.30	0.54	1.73	0.11	0.43	0.11	0.00	0.65	0.32	0.00	

ROMA/CIAMPINO (Roma) 105 m. s.l.m. (a.s.l.)													
DISTRIBUZIONE DEI VENTI (WIND DISTRIBUTION) - HH 12													
MM	Calme Calm	N 1-10	N 11-20	N >20	NE 1-10	NE 11-20	NE >20	E 1-10	E 11-20	E >20	SE 1-10	SE 11-20	SE >20
Gen(Jan)	17.01	16.36	5.92	0.86	16.47	3.66	0.11	2.05	1.18	0.11	1.40	4.20	1.18
Feb(Feb)	13.24	14.78	5.91	0.71	8.98	2.60	0.24	2.01	1.06	0.00	0.83	3.19	0.83
Mar(Mar)	7.99	8.64	5.08	1.30	5.51	1.94	0.00	1.40	0.43	0.00	1.30	2.59	1.30
Apr(Apr)	4.89	6.12	3.23	0.11	2.45	1.45	0.33	1.67	1.11	0.11	0.56	2.45	1.22
Mag(May)	2.47	4.62	2.15	0.00	2.26	0.75	0.00	0.97	0.11	0.00	0.54	1.18	0.86
Giu(Jun)	1.90	3.36	2.13	0.00	1.46	0.45	0.00	1.34	0.34	0.00	0.90	1.46	0.45
Lug(Jul)	2.37	4.42	2.37	0.11	1.83	0.54	0.00	0.86	0.54	0.00	0.76	0.97	0.11
Ago(Aug)	3.45	5.60	1.72	0.11	1.94	0.65	0.00	1.29	0.22	0.00	0.86	0.65	0.54
Set(Sep)	8.23	7.23	1.78	0.00	3.34	0.78	0.00	1.11	0.67	0.00	0.89	1.78	0.56
Ott(Oct)	12.61	11.21	2.91	0.11	6.25	1.40	0.00	1.29	0.65	0.00	1.29	4.85	1.29
Nov(Nov)	19.13	14.68	4.89	0.44	12.24	2.22	0.11	1.78	0.56	0.11	1.56	5.56	1.00
Dic(Dec)	17.97	16.45	6.82	0.97	16.02	4.11	0.32	2.38	1.41	0.00	1.62	4.22	1.08
MM	S 1-10	S 11-20	S >20	SW 1-10	SW 11-20	SW >20	W 1-10	W 11-20	W >20	NW 1-10	NW 11-20	NW >20	
Gen(Jan)	4.74	12.27	0.86	2.80	0.97	0.22	1.72	1.08	0.11	3.44	1.08	0.22	
Feb(Feb)	6.03	14.30	1.77	6.03	3.07	0.00	4.61	1.42	0.12	6.62	1.42	0.00	
Mar(Mar)	4.97	15.55	1.84	11.88	8.96	0.32	9.40	1.62	0.00	6.26	1.51	0.22	
Apr(Apr)	2.89	16.80	2.34	13.68	15.68	0.22	10.90	5.90	0.44	3.67	1.78	0.00	
Mag(May)	2.69	15.16	0.75	13.55	21.08	0.00	15.70	6.77	0.00	6.13	2.04	0.00	
Giu(Jun)	3.70	14.89	1.23	14.11	23.18	0.11	12.77	9.18	0.00	5.15	1.79	0.00	
Lug(Jul)	5.07	13.05	0.86	12.73	23.09	0.00	11.97	11.11	0.11	5.39	1.62	0.00	
Ago(Aug)	5.82	14.76	0.43	13.04	18.86	0.32	12.18	7.76	0.00	8.19	1.29	0.00	
Set(Sep)	7.34	15.68	1.00	13.46	10.90	0.00	10.79	3.89	0.00	9.57	0.89	0.11	
Ott(Oct)	7.97	14.87	1.62	6.90	5.06	0.11	7.65	2.16	0.00	8.84	0.75	0.00	
Nov(Nov)	4.45	13.46	1.56	3.34	4.67	0.11	2.45	1.22	0.00	3.45	1.00	0.00	
Dic(Dec)	4.00	11.04	1.62	1.41	3.90	0.00	0.76	1.30	0.11	1.41	0.97	0.00	
DISTRIBUZIONE DEI VENTI (WIND DISTRIBUTION) - HH 18													
MM	Calme Calm	N 1-10	N 11-20	N >20	NE 1-10	NE 11-20	NE >20	E 1-10	E 11-20	E >20	SE 1-10	SE 11-20	SE >20
Gen(Jan)	31.32	3.34	4.09	0.32	9.58	1.08	0.00	8.61	1.29	0.00	9.58	3.23	1.72
Feb(Feb)	26.65	4.48	5.66	0.35	5.54	1.18	0.00	2.83	0.83	0.00	3.30	2.95	0.94
Mar(Mar)	24.03	2.05	4.74	0.32	2.91	1.51	0.00	1.40	1.29	0.00	1.19	2.59	1.72
Apr(Apr)	22.72	2.12	3.23	0.00	2.67	1.45	0.00	1.56	0.89	0.00	1.45	3.23	0.89
Mag(May)	16.56	2.15	2.15	0.00	2.15	0.54	0.00	1.61	0.43	0.00	0.75	1.08	0.00
Giu(Jun)	7.26	1.12	1.79	0.11	1.56	1.23	0.00	1.12	0.34	0.00	0.56	0.45	0.11
Lug(Jul)	7.33	1.19	2.69	0.11	1.83	0.54	0.00	0.43	0.54	0.00	0.75	0.65	0.00
Ago(Aug)	10.34	1.62	1.72	0.00	1.40	0.43	0.00	0.86	0.54	0.00	0.86	0.97	0.11
Set(Sep)	30.92	1.67	1.33	0.00	2.34	1.00	0.11	1.78	0.56	0.00	1.56	1.33	0.22
Ott(Oct)	34.30	3.01	1.18	0.00	3.87	0.75	0.11	2.69	0.65	0.00	7.42	3.66	0.65
Nov(Nov)	32.89	4.24	3.01	0.11	8.81	0.67	0.00	6.91	1.56	0.11	9.70	5.69	0.56
Dic(Dec)	31.57	4.96	3.34	0.65	10.45	1.51	0.11	11.10	1.19	0.00	7.97	4.85	0.86
MM	S 1-10	S 11-20	S >20	SW 1-10	SW 11-20	SW >20	W 1-10	W 11-20	W >20	NW 1-10	NW 11-20	NW >20	
Gen(Jan)	13.35	6.57	0.65	2.05	0.32	0.00	0.97	0.32	0.00	0.97	0.65	0.00	
Feb(Feb)	23.35	8.61	0.59	6.60	1.42	0.24	2.24	0.35	0.00	0.94	0.94	0.00	
Mar(Mar)	16.49	10.88	0.54	16.59	1.62	0.00	7.33	0.97	0.00	0.86	0.97	0.00	
Apr(Apr)	11.36	11.47	0.78	20.49	3.12	0.11	9.47	1.22	0.00	1.11	0.67	0.00	
Mag(May)	9.46	10.97	0.54	30.54	3.87	0.00	14.19	1.08	0.00	1.18	0.75	0.00	
Giu(Jun)	5.03	10.06	0.11	31.17	8.72	0.00	21.45	5.47	0.00	1.45	0.78	0.00	
Lug(Jul)	3.45	9.38	0.22	29.96	10.67	0.00	21.98	7.00	0.00	0.97	0.32	0.00	
Ago(Aug)	5.06	6.36	0.22	36.96	6.68	0.00	21.01	3.45	0.00	0.75	0.65	0.00	
Set(Sep)	13.46	7.79	0.33	23.80	2.22	0.00	6.67	0.78	0.00	1.45	0.67	0.00	
Ott(Oct)	22.15	8.28	0.54	5.81	0.65	0.00	2.47	0.22	0.11	1.08	0.43	0.00	
Nov(Nov)	11.26	8.03	1.34	1.56	1.45	0.33	0.45	0.45	0.00	0.56	0.33	0.00	
Dic(Dec)	8.62	7.97	0.54	1.08	1.29	0.11	0.65	0.22	0.00	0.54	0.22	0.22	



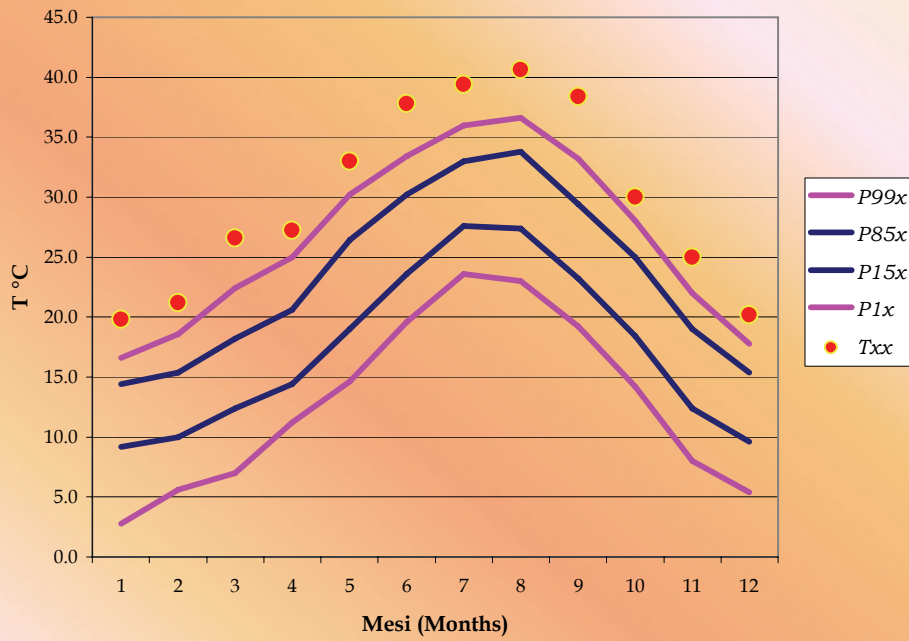
ROMA/CIAMPINO (Roma) 105 m. s.l.m. (a.s.l.)



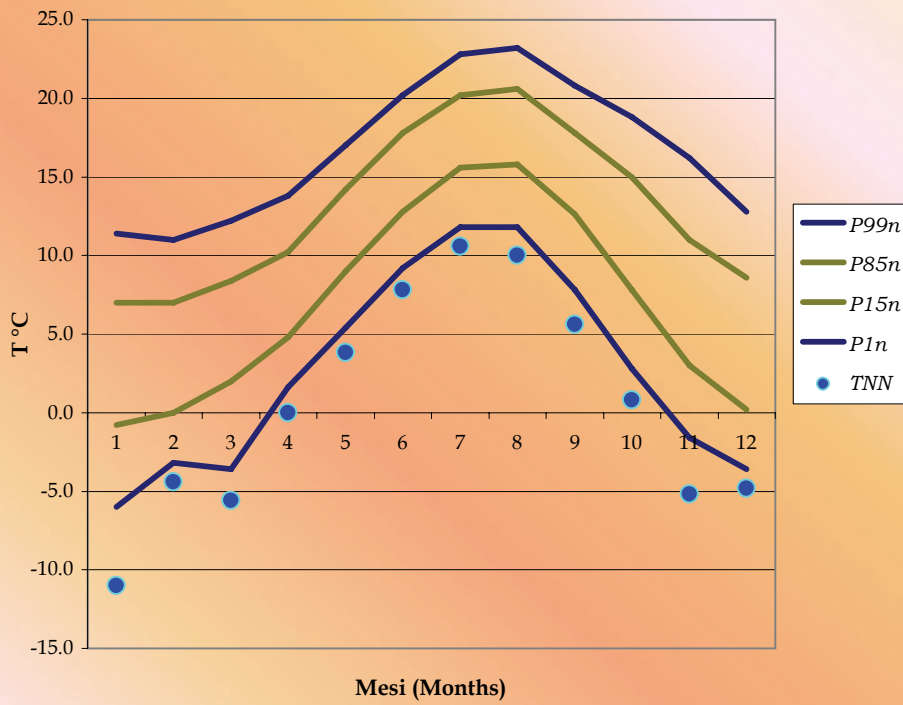


ROMA/CIAMPINO (Roma) 105 m. s.l.m. (a.s.l.)

**Estremi e Percentili delle Temperature Massime
(Extremes and Percentiles about Max. Temp.)**

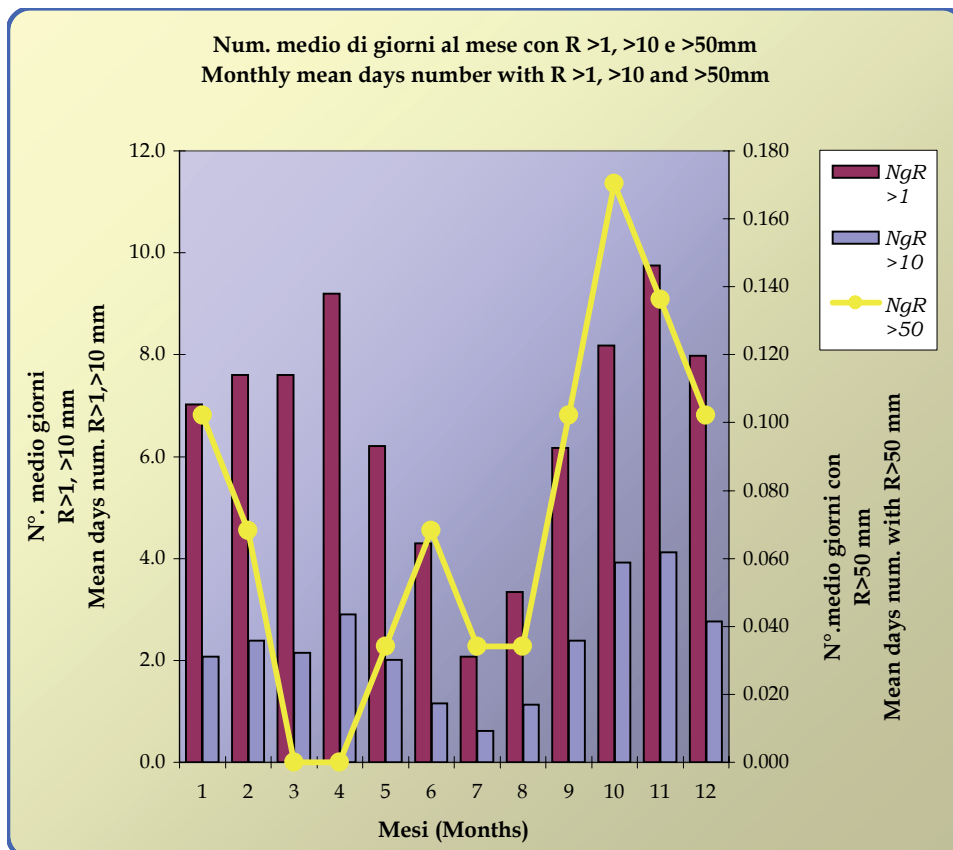
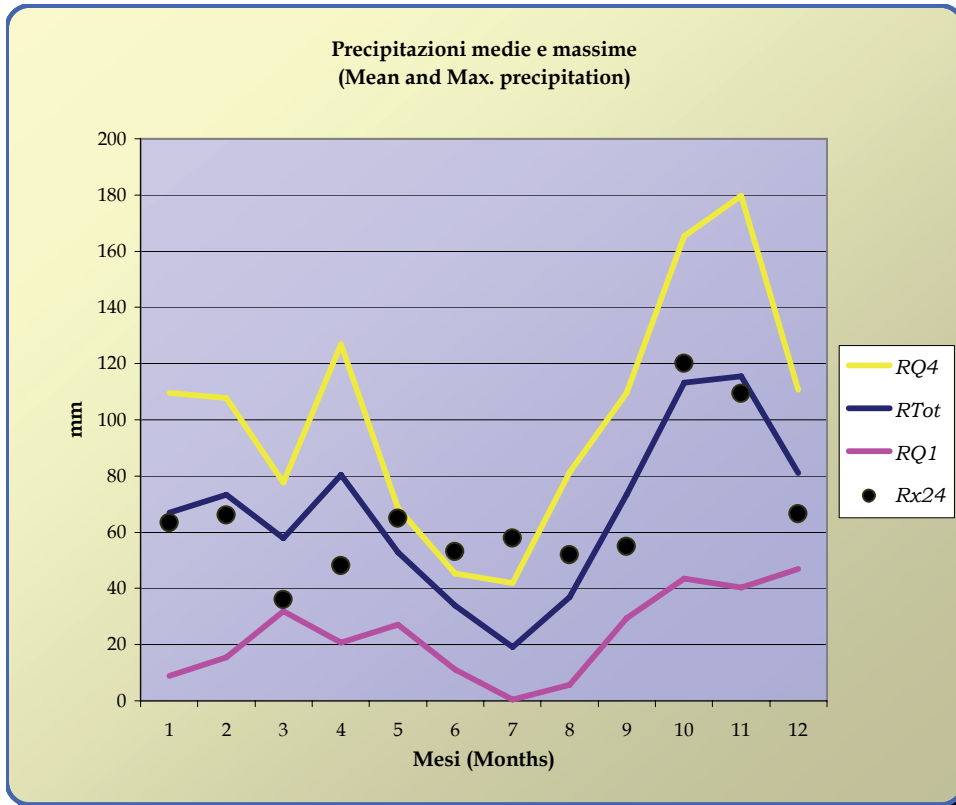


**Estremi e Percentili delle Temperature Minime
(Extremes and Percentiles about Min. Temp.)**





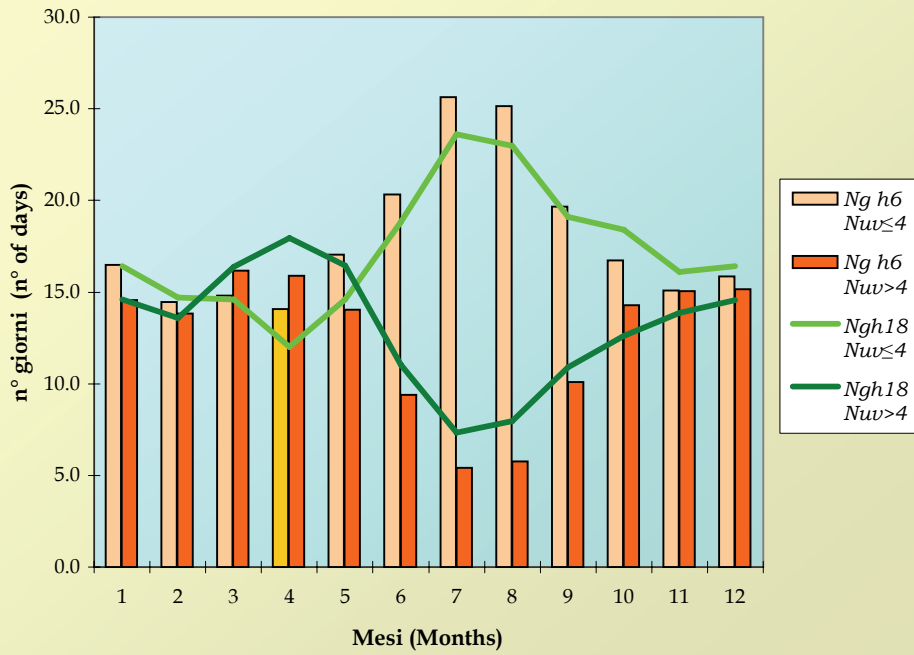
ROMA/CIAMPINO (Roma) 105 m. s.l.m. (a.s.l.)



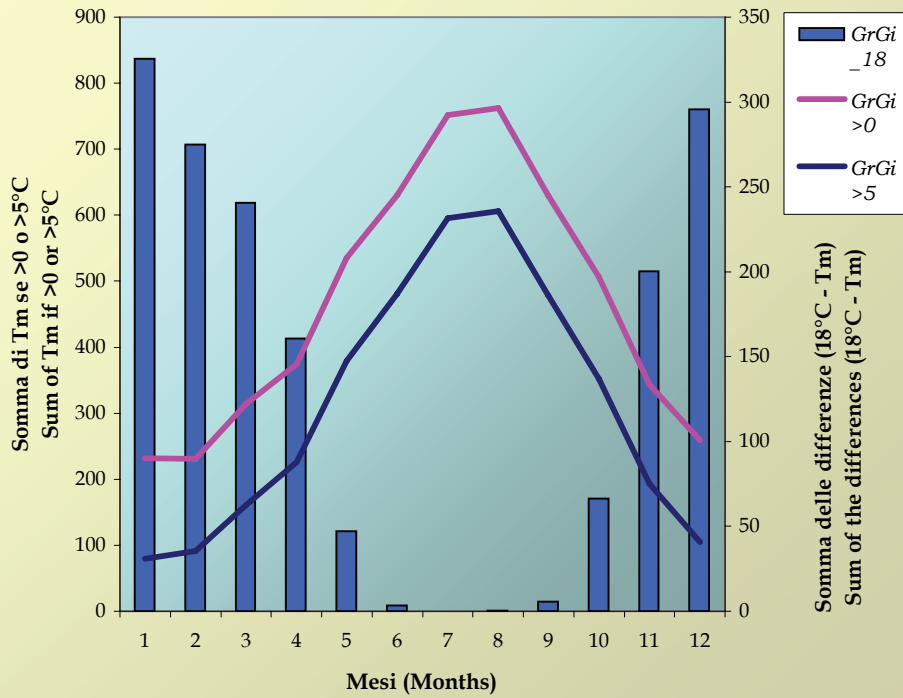


ROMA/CIAMPINO (Roma) 105 m. s.l.m. (a.s.l.)

**Nuvolosità alle h 06 e alle h 18
(Cloudiness at h 06 and h 18)**

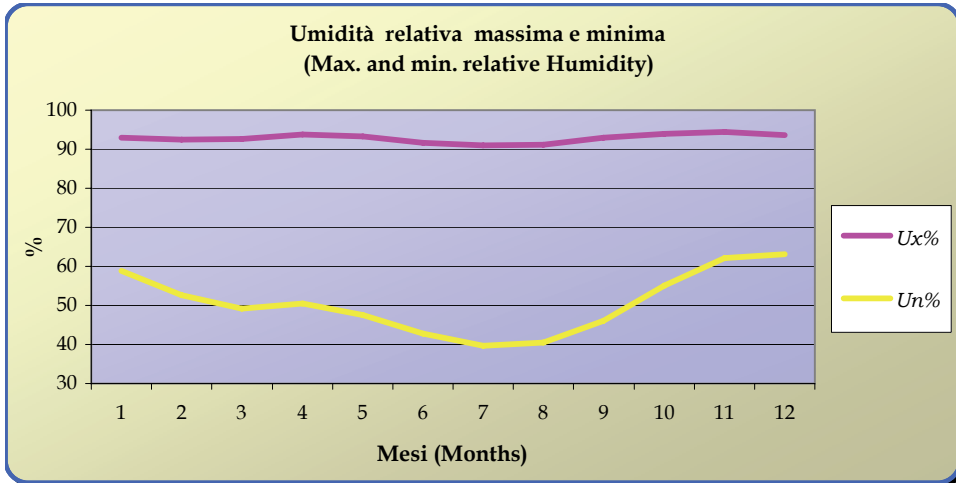


**Gradi Giorno per la crescita (linee) e per il riscald. ambientale (istogr.)
(Growing degree Days (lines) and warming degree Days (hist.))**



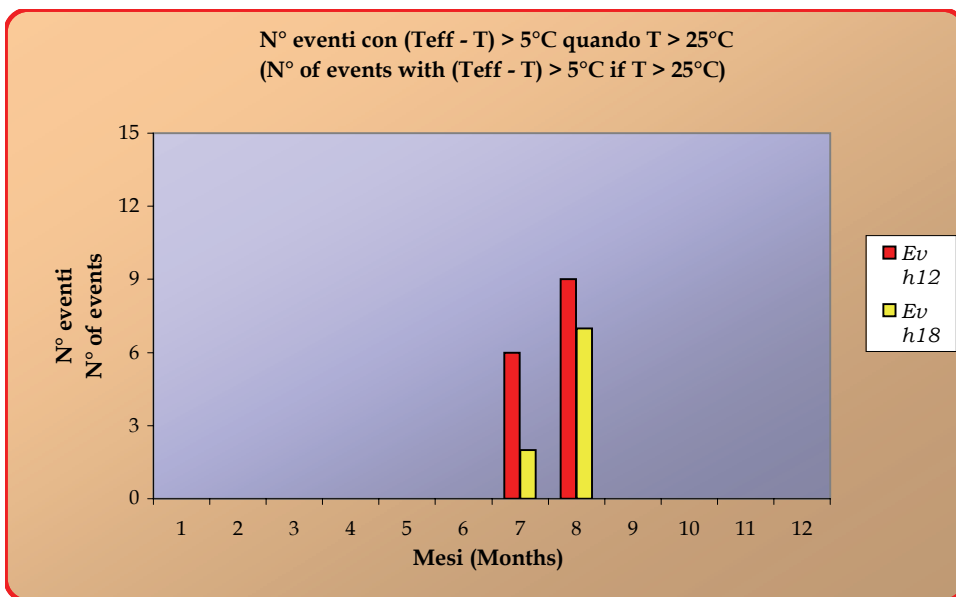


ROMA/CIAMPINO (Roma) 105 m. s.l.m. (a.s.l.)



Temperature di effetto (Discomfort temperature)

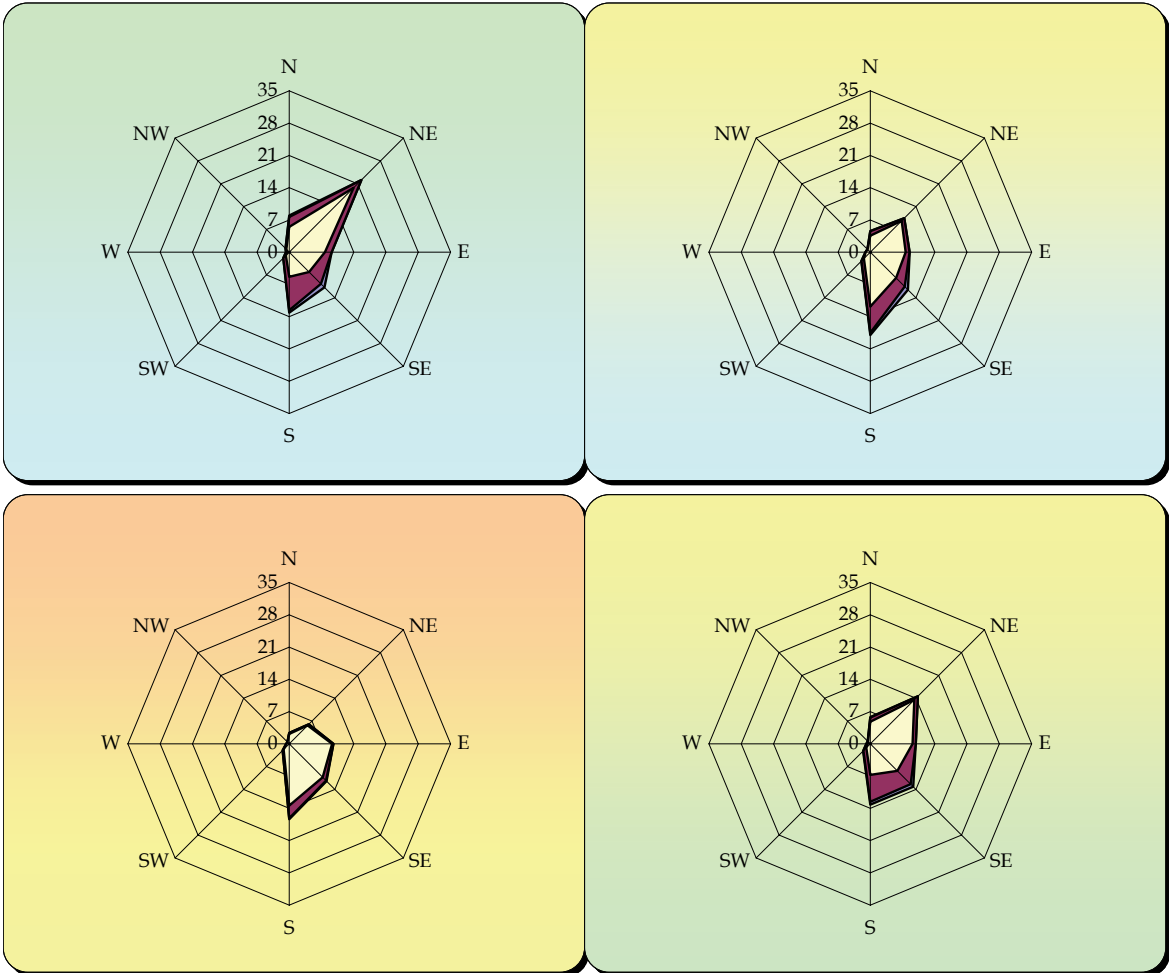
MM	Teff12	Ev h12	Tm 12	U% 12	Teff18	Ev h18	Tm 18	U% 18
Gen(Jan)								
Feb(Feb)								
Mar(Mar)								
Apr(Apr)								
Mag(May)								
Giu(Jun)								
Lug(Jul)	38.6	6	32.4	63	34.7	2	29.4	76
Ago(Aug)	36.5	9	30.8	68	36.4	7	29.9	77
Set(Sep)								
Ott(Oct)								
Nov(Nov)								
Dic(Dec)								





ROMA/CIAMPINO (Roma) 105 m. s.l.m. (a.s.l.)

**GRAFICI ANEMOMETRICI
(ANEMOMETRIC DIAGRAMS)**



I diagrammi del vento sono ordinati per stagione come la tabella seguente.
(The anemometric diagrams are ordered by season as follows)

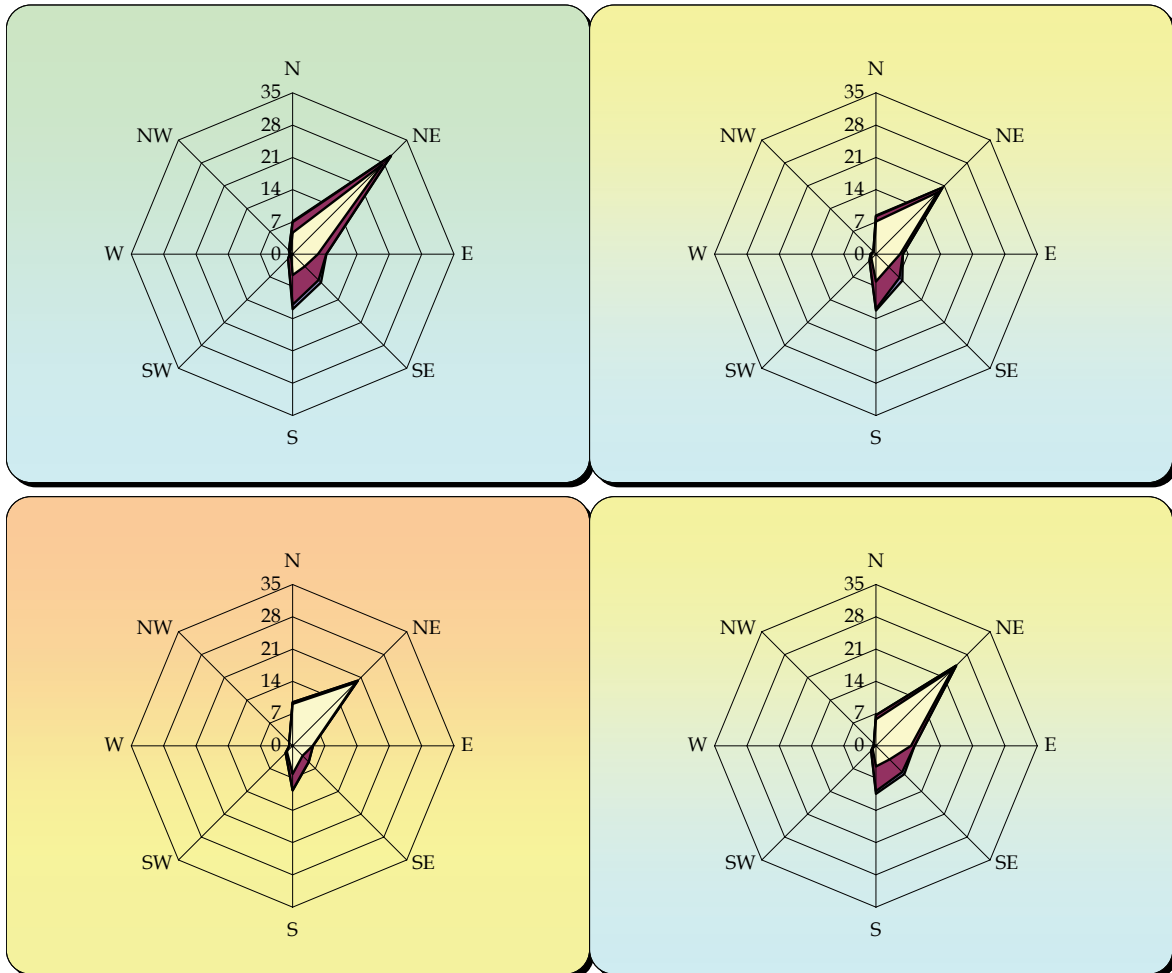
INVERNO (Dic. - Gen. - Feb.) WINTER (Dec. - Jan. - Feb.) % calme di vento = 33 % Wind Calm =	PRIMAVERA (Mar. - Apr. - Mag.) SPRING (Mar. - Apr. - May.) % calme di vento = 42 % Wind Calm =
ESTATE (Giu. - Lug. - Ago.) SUMMER (Jun. - Jul. - Aug.) % calme di vento = 51 % Wind Calm =	AUTUNNO (Set. - Ott. - Nov.) AUTUMN (Sep. - Oct. - Nov.) % calme di vento = 39 % Wind Calm =

Periodo di riferimento dei dati (Period of reference considered to get data) = **1971 ÷ 2000**
Frequenze percentuali alle ore (Percentage frequency of occurrence at) = **00 UTC**



ROMA/CIAMPINO (Roma) 105 m. s.l.m. (a.s.l.)

GRAFICI ANEMOMETRICI (ANEMOMETRIC DIAGRAMS)



I diagrammi del vento sono ordinati per stagione come la tabella seguente.
(The anemometric diagrams are ordered by season as follows)

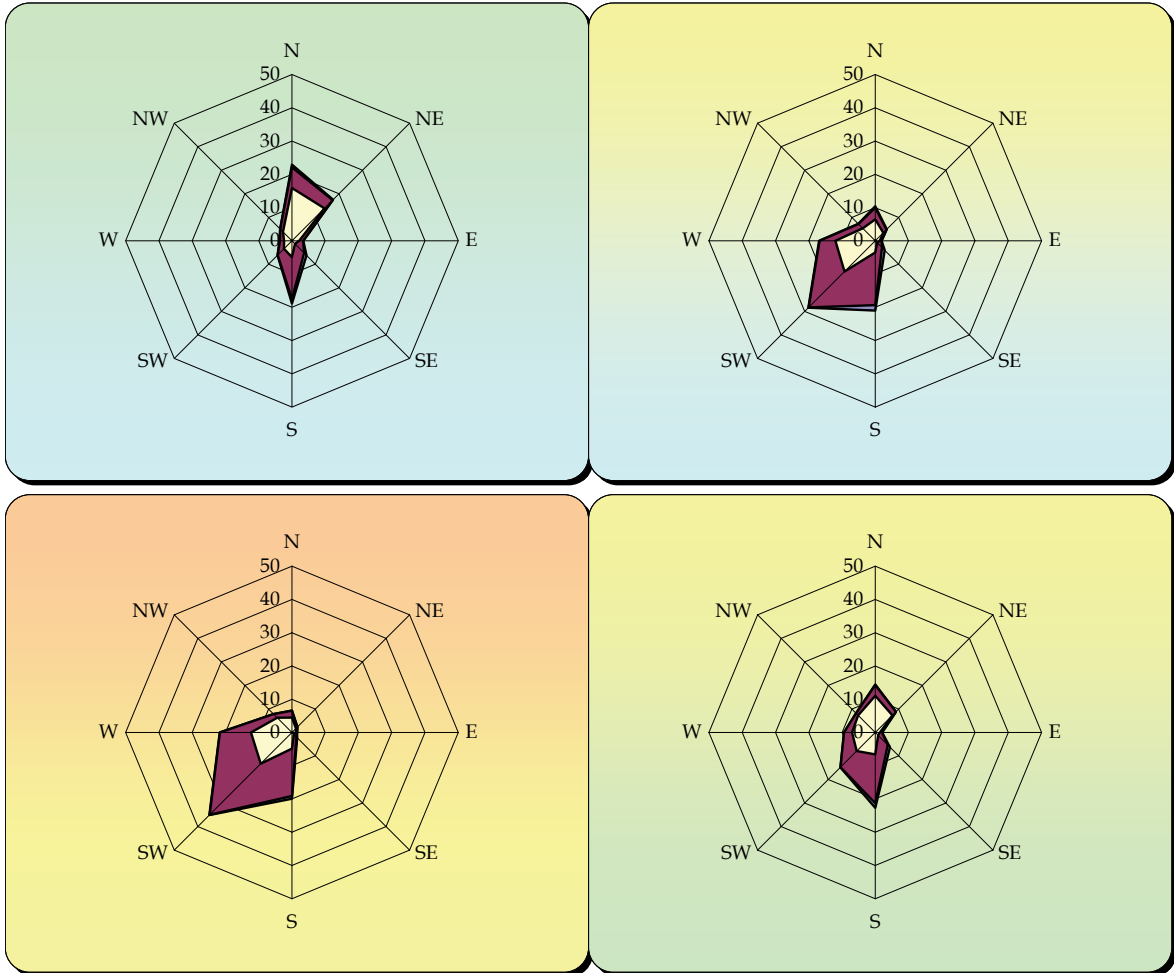
INVERNO (Dic. - Gen. - Feb.) WINTER (Dec. - Jan. - Feb.) % calme di vento = % Wind Calm =	32	PRIMAVERA (Mar. - Apr. - Mag.) SPRING (Mar. - Apr. - May.) % calme di vento = % Wind Calm =	41
ESTATE (Giu. - Lug. - Ago.) SUMMER (Jun. - Jul. - Aug.) % calme di vento = % Wind Calm =	48	AUTUNNO (Set. - Ott. - Nov.) AUTUMN (Sep. - Oct. - Nov.) % calme di vento = % Wind Calm =	39

Periodo di riferimento dei dati (Period of reference considered to get data) = **1971 ÷ 2000**
 Frequenze percentuali alle ore (Percentage frequency of occurrence at) = **06 UTC**



ROMA/CIAMPINO (Roma) 105 m. s.l.m. (a.s.l.)

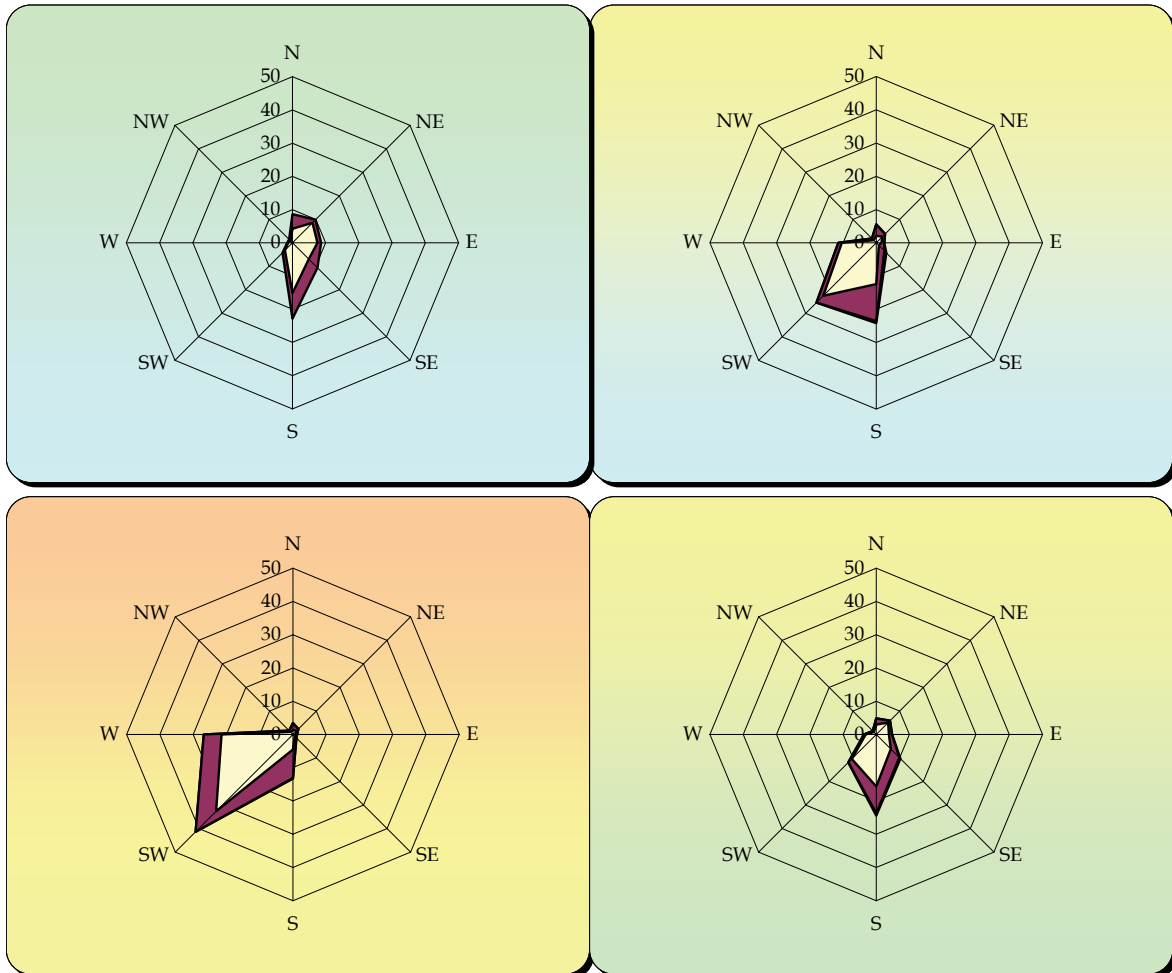
**GRAFICI ANEMOMETRICI
(ANEMOMETRIC DIAGRAMS)**



I diagrammi del vento sono ordinati per stagione come la tabella seguente.
(The anemometric diagrams are ordered by season as follows)

INVERNO (Dic. - Gen. - Feb.) WINTER (Dec. - Jan. - Feb.) % calme di vento = % Wind Calm =	16	PRIMAVERA (Mar. - Apr. - Mag.) SPRING (Mar. - Apr. - May.) % calme di vento = % Wind Calm =	5
ESTATE (Giu. - Lug. - Ago.) SUMMER (Jun. - Jul. - Aug.) % calme di vento = % Wind Calm =	3	AUTUNNO (Set. - Ott. - Nov.) AUTUMN (Sep. - Oct. - Nov.) % calme di vento = % Wind Calm =	13

Periodo di riferimento dei dati (Period of reference considered to get data) = **1971 ÷ 2000**
Frequenze percentuali alle ore (Percentage frequency of occurrence at) = **12 UTC**

**ROMA/CIAMPINO (Roma) 105 m. s.l.m. (a.s.l.)****GRAFICI ANEMOMETRICI
(ANEMOMETRIC DIAGRAMS)**

I diagrammi del vento sono ordinati per stagione come la tabella seguente.
(The anemometric diagrams are ordered by season as follows)

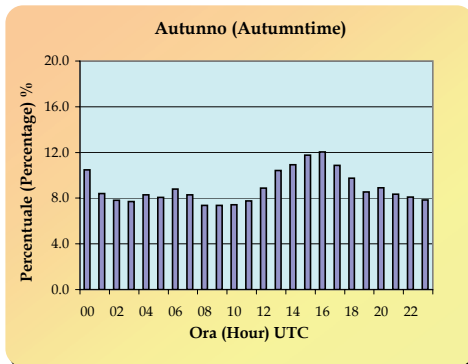
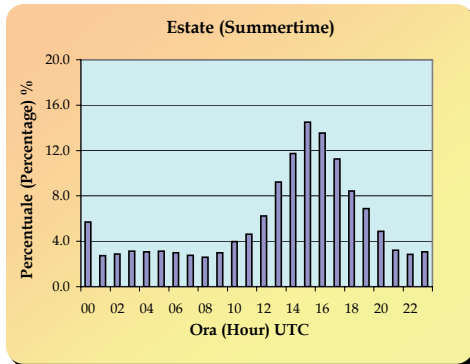
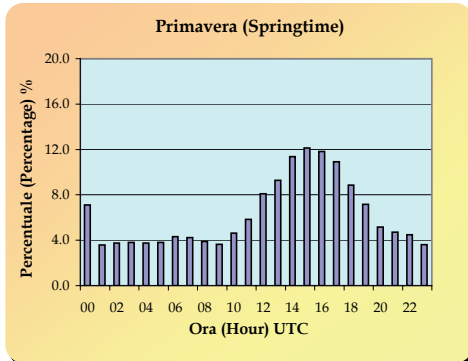
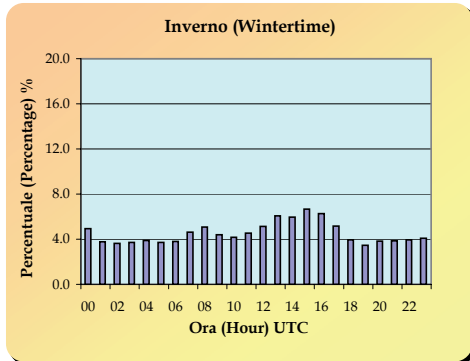
INVERNO (Dic. - Gen. - Feb.) WINTER (Dec. - Jan. - Feb.) % calme di vento = % Wind Calm =	30	PRIMAVERA (Mar. - Apr. - Mag.) SPRING (Mar. - Apr. - May.) % calme di vento = % Wind Calm =	21
ESTATE (Giu. - Lug. - Ago.) SUMMER (Jun. - Jul. - Aug.) % calme di vento = % Wind Calm =	8	AUTUNNO (Set. - Ott. - Nov.) AUTUMN (Sep. - Oct. - Nov.) % calme di vento = % Wind Calm =	33

Periodo di riferimento dei dati (Period of reference considered to get data) = **1971 ÷ 2000**
 Frequenze percentuali alle ore (Percentage frequency of occurrence at) = **18 UTC**



ROMA/CIAMPINO (Roma) 105 m. s.l.m. (a.s.l.)

PERCENTUALE DI CASI CON NUBI TEMPORALESCHIE NEL PERIODO 1973-2000 NELLE VARIE STAGIONI
(PERCENTAGE OF OBSERVED CUMULONIMBUS IN THE PERIOD 1973-2000 FOR EACH SEASON)



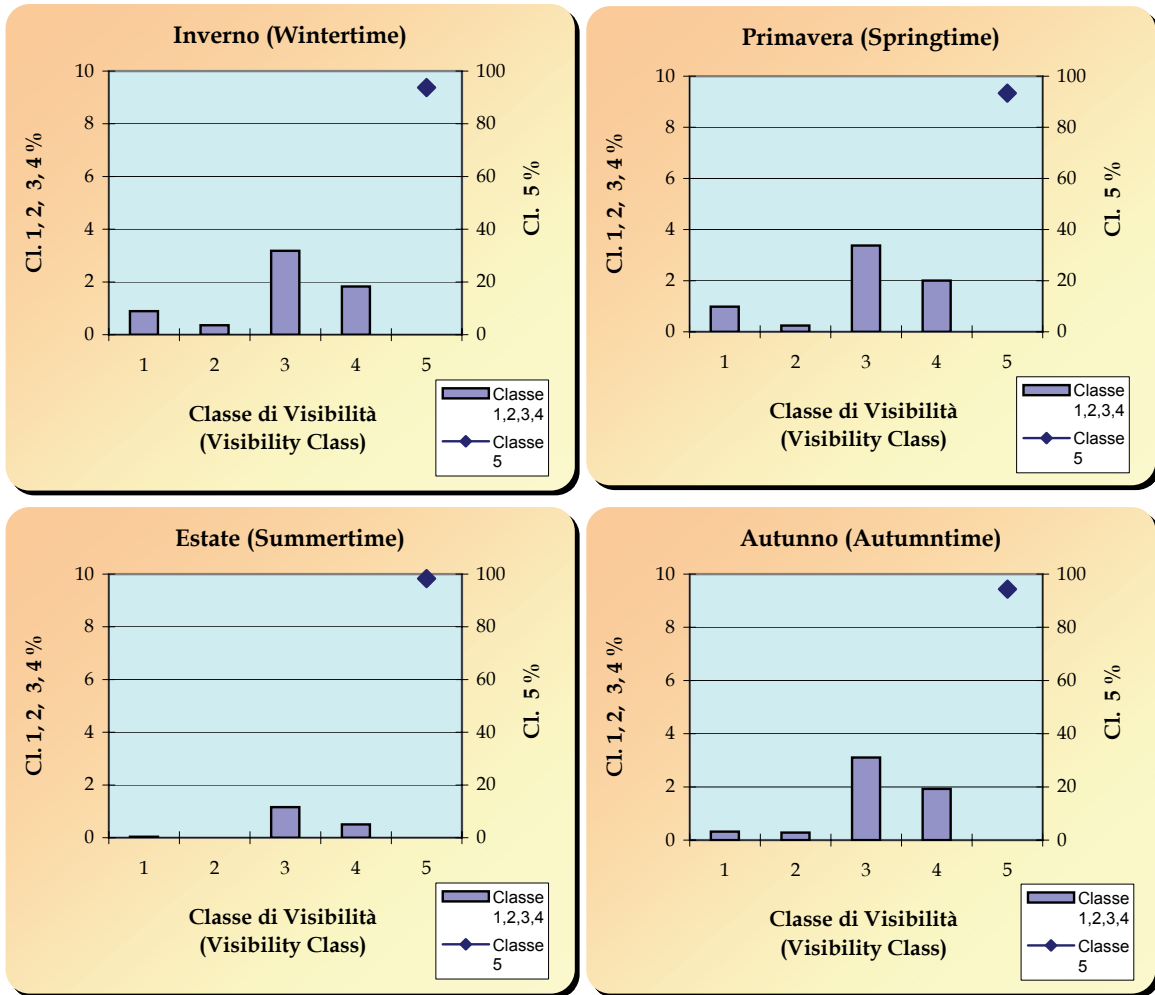
HH (Hour)	Inverno (Winter)	Primavera (Spring)	Estate (Summer)	Autunno (Autumn)
00	4.9	7.1	5.7	10.5
01	3.8	3.6	2.7	8.4
02	3.6	3.7	2.9	7.8
03	3.7	3.8	3.1	7.7
04	3.9	3.8	3.1	8.3
05	3.7	3.8	3.1	8.1
06	3.8	4.3	3.0	8.8
07	4.6	4.2	2.8	8.3
08	5.1	3.9	2.6	7.4
09	4.4	3.6	3.0	7.4
10	4.2	4.6	4.0	7.4
11	4.5	5.8	4.6	7.8
12	5.1	8.1	6.2	8.9
13	6.1	9.3	9.2	10.4
14	6.0	11.4	11.7	10.9
15	6.7	12.1	14.5	11.8
16	6.3	11.8	13.5	12.0
17	5.2	10.9	11.2	10.9
18	3.9	8.9	8.4	9.8
19	3.5	7.2	6.9	8.5
20	3.8	5.2	4.9	8.9
21	3.9	4.7	3.2	8.3
22	4.0	4.5	2.9	8.1
23	4.1	3.6	3.1	7.8

N.B.: l'assenza del dato non significa che il valore sia nullo, ma la scarsità dei dati presenti non consente una elaborazione statistica significativa.
(Missing data doesn't mean null value but the scarcity of the data in the database doesn't allow a significant statistics elaboration).



ROMA/CIAMPINO (Roma) 105 m. s.l.m. (a.s.l.)

PERCENTUALE DEI CASI DI VISIBILITA' COMPRESA NELLA RISPETTIVA CLASSE NEL PERIODO 1973-2000 ALLE 06 UTC
(VISIBILITY FREQUENCY FOR EACH CLASS IN THE PERIOD 1973-2000 AT 06 UTC)

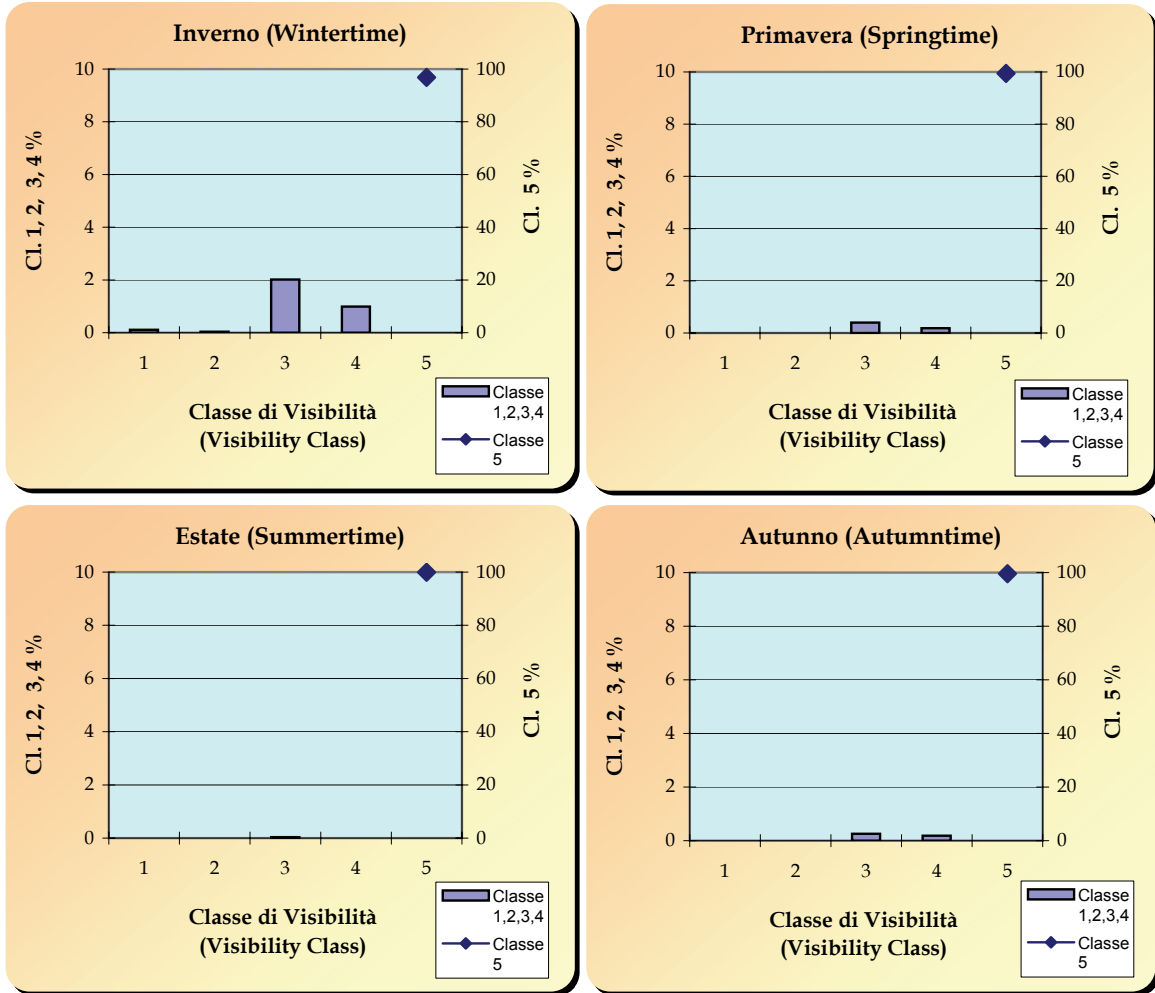


Ore 06 UTC (hour 06 UTC)					
Classe (Class)	Vis. (m) (Visibility)	Inverno (Winter)	Primavera (Spring)	Estate (Summer)	Autunno (Autumn)
1	0-100	0.9	1.0	0.0	0.3
2	101-200	0.4	0.2	0.0	0.3
3	201-1000	3.2	3.4	1.2	3.1
4	1001-2000	1.8	2.0	0.5	1.9
5	> 2000	93.7	93.4	98.3	94.4



ROMA/CIAMPINO (Roma) 105 m. s.l.m. (a.s.l.)

PERCENTUALE DEI CASI DI VISIBILITA' COMPRESA NELLA RISPETTIVA CLASSE NEL PERIODO 1973-2000 ALLE 12 UTC
(VISIBILITY FREQUENCY FOR EACH CLASS IN THE PERIOD 1973-2000 AT 12 UTC)

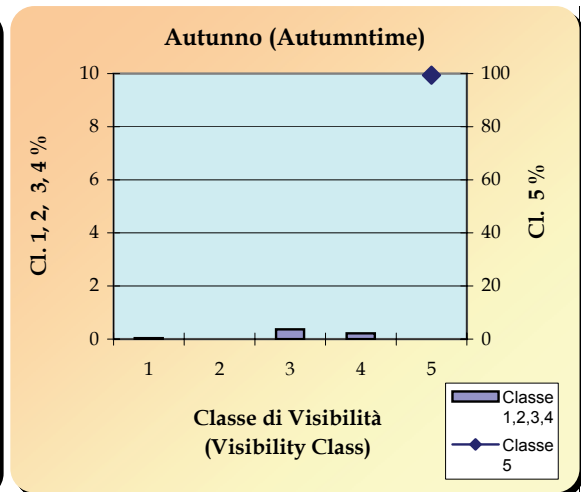
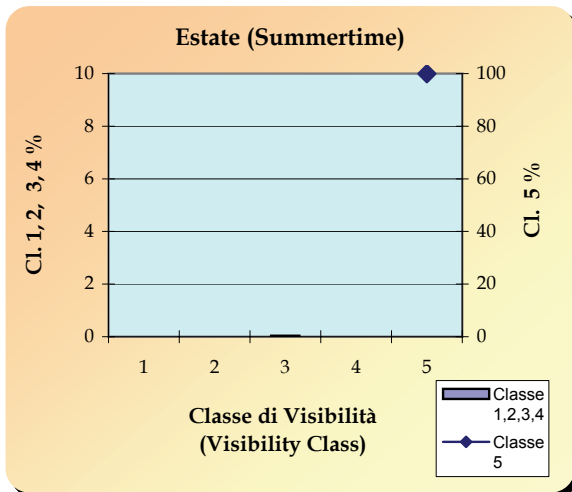
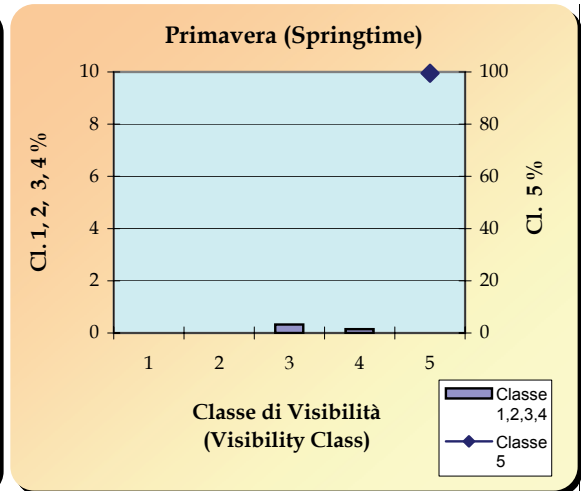
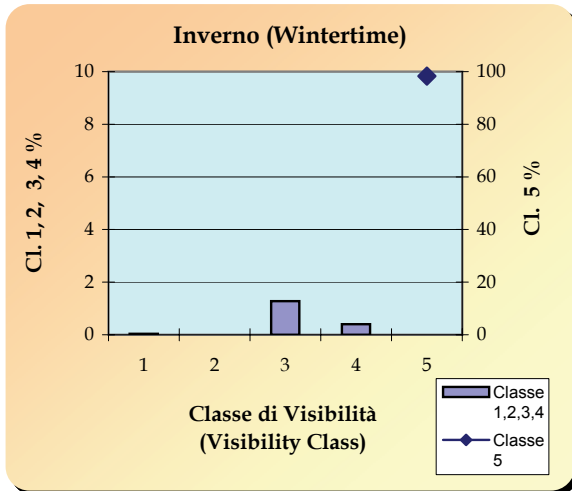


Ore 12 UTC (hour 12 UTC)					
Classe (Class)	Vis. (m) (Visibility)	Inverno (Winter)	Primavera (Spring)	Estate (Summer)	Autunno (Autumn)
1	0-100	0.1	0.0	0.0	0.0
2	101-200	0.0	0.0	0.0	0.0
3	201-1000	2.0	0.4	0.0	0.3
4	1001-2000	1.0	0.2	0.0	0.2
5	> 2000	96.9	99.4	100.0	99.6



ROMA/CIAMPINO (Roma) 105 m. s.l.m. (a.s.l.)

PERCENTUALE DEI CASI DI VISIBILITA' COMPRESA NELLA RISPETTIVA CLASSE NEL PERIODO 1973-2000 ALLE 18 UTC
(VISIBILITY FREQUENCY FOR EACH CLASS IN THE PERIOD 1973-2000 AT 18 UTC)



Ore 18 UTC (hour 18 UTC)					
Classe (Class)	Vis. (m) (Visibility)	Inverno (Winter)	Primavera (Spring)	Estate (Summer)	Autunno (Autumn)
1	0-100	0.0	0.0	0.0	0.0
2	101-200	0.0	0.0	0.0	0.0
3	201-1000	1.3	0.3	0.0	0.4
4	1001-2000	0.4	0.1	0.0	0.2
5	> 2000	98.3	99.5	100.0	99.4