



# Fitchburg Commuter Rail Line Improvement Project

*Project Update*

June, 2015



# Program Definition/Goals

## One Program/Multiple Projects:

\$172M Small Starts/Rt 62 Bridge (FTA/State)

\$ 10M CPF-43 Interlocking (ARRA)

\$ 43M Double Tracking (ARRA/EOHED)

\$ 74M Wachusett Extension (TIGER/State)

\$ 7M N. Leominster Parking (FTA/State)

**\$306M Investment**

**Improve  
Performance**

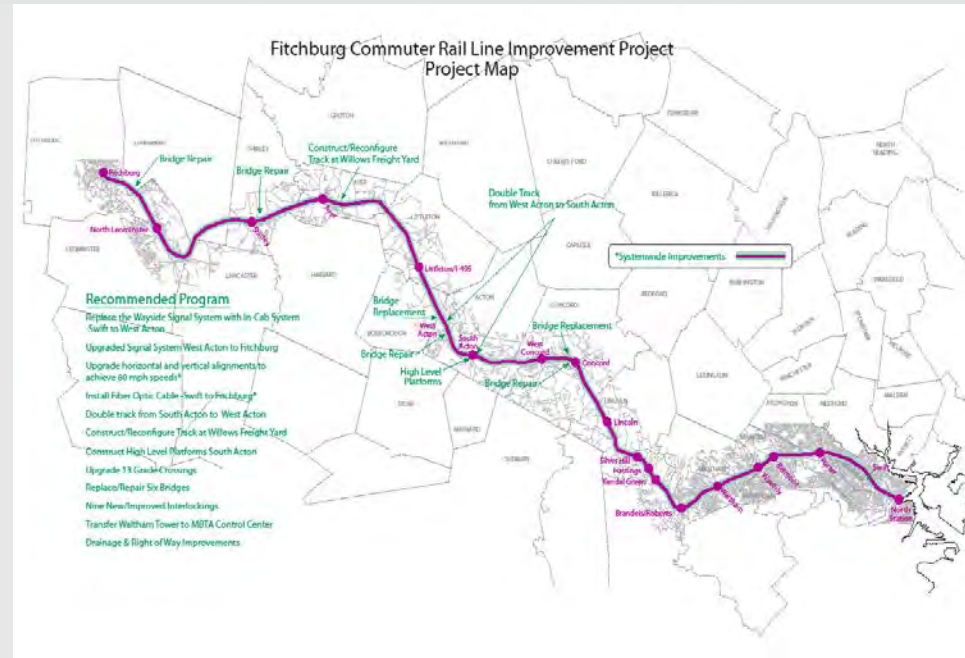


**Increase Reliability/Access.  
Decrease Travel Time  
Extend Service**



# Program Construction Schedule

- **CPF-43**  
Complete
- **Double Track**  
Complete
- **Small Starts/Rt.62**  
Jan 2012 – Dec 2015
- **N. Leominster Parking Garage**  
Complete
- **Wachusett Extension**  
Fall 2011 - 2016

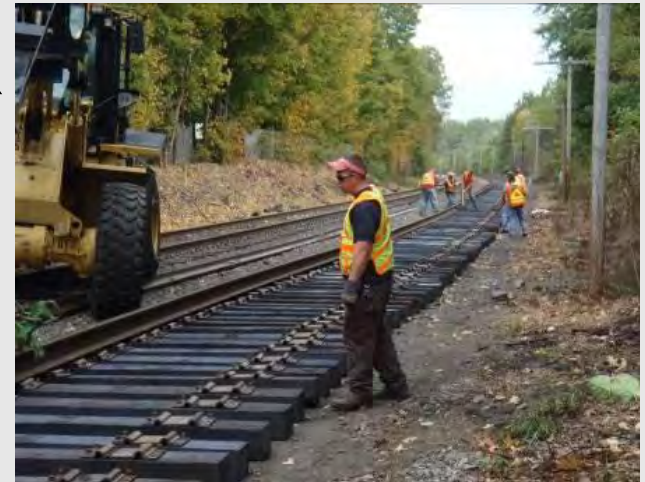




# Double Track

## 8 Mi. of Double Track/New Littleton-495 Station

- Force Account Construction – MBCR
  - Track and Signal work complete
- Littleton Station Construction
  - Station and Parking complete

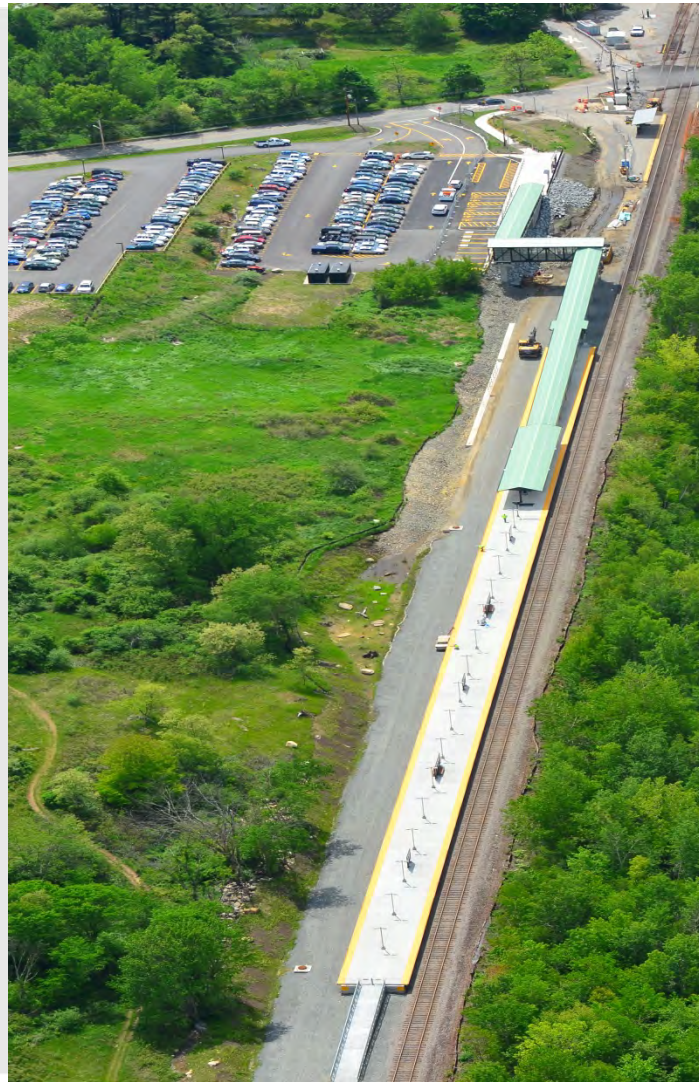






# Double Track – Littleton Station

**May 2013**  
**Aerial Photo**  
(Courtesy of R.  
Coughlin)





# Small Starts Project

- New Signal System - Boston to Acton
- Upgrade track alignments to achieve 79 MPH
- 1 mi second track South Acton to West Acton
- Reconfigure track in Ayer freight area
- High level platforms at South Acton Station
- Upgrade 30 grade crossing warning systems
- Repair or replace seven (7) bridges
- Nine (9) new or modified interlockings
- Transfer Waltham Tower to MBTA Control Center



# Small Starts Update

- Three Construction Packages
  - Track & Signal – started July 2013
  - Bridges – started Dec 2012
  - South Acton – started Dec 2012
- Project is on schedule
- Complete by Dec 31, 2015







# South Acton Station







# Station - Construction Status

- Foundations complete; platform panels installed; headhouse and site work underway
- Work delayed due to subcontractor issue
- Expect new station to open in fall 2015



# South Acton - New Headhouse Progress







# South Acton - Platform Progress







# Bridges







# Bridges - Construction Status

- Bridge repairs complete at 5 locations
- 3 Bridges in Concord
  - Sudbury River
  - Assabett River
  - Route 62
- Phase 1 work complete; Phase 2 underway
- Route 62 bridge roll-in end of August 2015



# West Acton Bridge







# Baker's Brook Bridge







# Mill Pond Bridge







# Sudbury River Bridge







# Assabet River Bridge







# Route 62 Bridge







# Track and Signal







# Track/Signal - Constr. Status

- Track replaced at 8 grade crossings
- New Crossovers installed in Lincoln (CP-18) and Fitchburg (CP-48)
- New Switches installed at each end of Waltham single-track segment (CP-9 and CP-10)
- Installation of new signal equipment underway
- New signal system Lincoln to Acton activated August 2014
- New Crossover installation in Belmont(CP-6), Acton(CP-25), & Ayer/Devens(CP-37) underway



# Second Track in W. Acton







# New crossover in Ayer







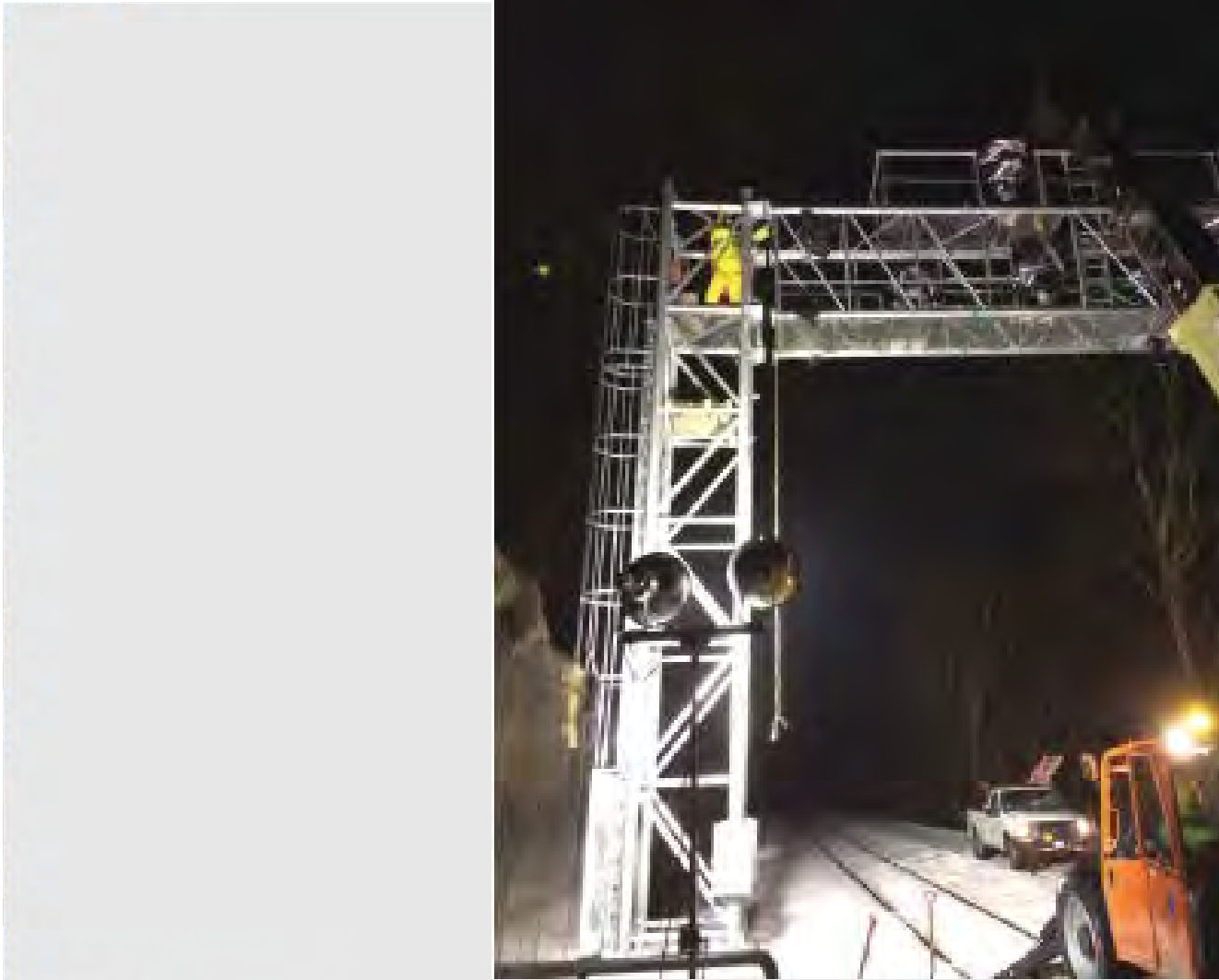
# East Main St bridge Ayer – Lowering Track to improve freight clearance







# Installing new Signal in Concord





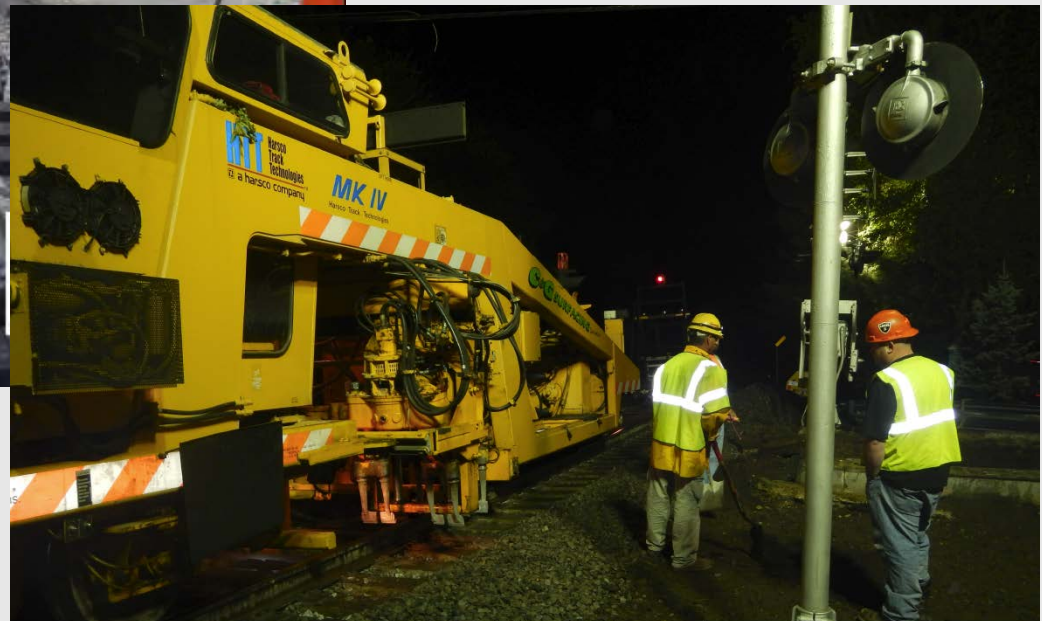
# New signal and signal house in Lincoln







# Grade Crossing Replacement – Tower Rd, Lincoln





# Curve Modifications to Increase Speed







# Curve Work - Belmont







# Curve Work – W.Cambridge







# New CP-37 Crossovers







# CP-25 Crossovers Progress







# Construction Impact on Service

- Weekend service suspensions starting Fall 2013 have successfully facilitated the work
- Starting August 2014 - single track for Concord bridge work required adjustments to weekday train schedule
- *Bonus: Additional Service to Littleton-495*
- *Speed increases starting in January 2015*



# CP-37 Friday Evening







# CP-37 Monday Morning





# 2015 Weekend Service

- April 25 through Nov 22:
  - No Weekend Service
- Normal service on Holiday Weekends
  - Memorial Day, Independence Day, Labor Day

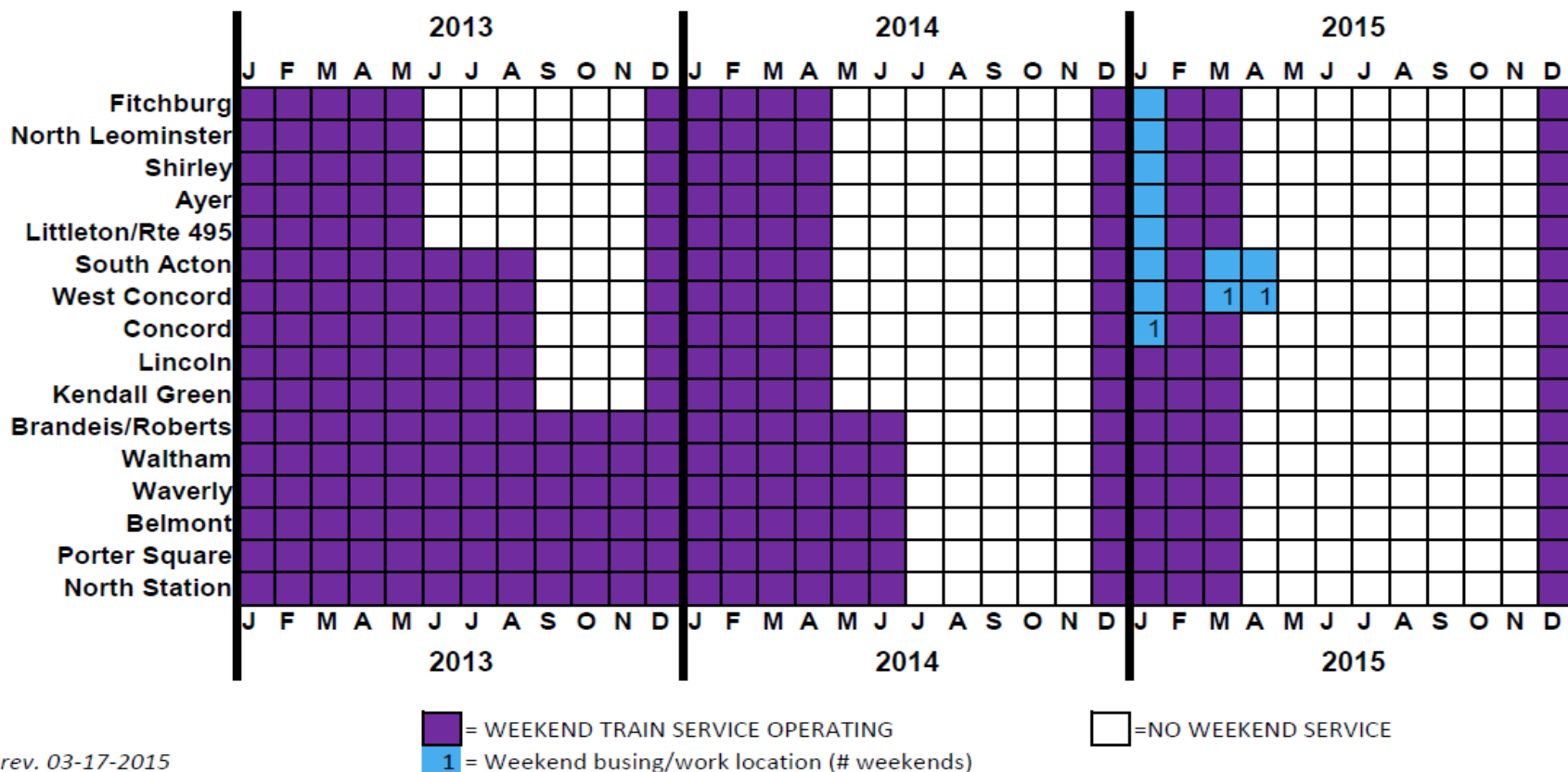




# Weekend Service Summary

## MBTA Fitchburg Line

### Weekend Service Outage Plan for Construction



rev. 03-17-2015

Note: Service to operate Boston-Fitchburg on Memorial Day, Independence Day, and Labor Day wknds  
 Note: Limits of busing are subject to change.



# Wachusett Extension

- Design and permitting complete
- Four construction packages
  - Station/layover site prep – Complete
  - Station/layover construction – Underway
  - Bridge repairs – Started Spring 2014
  - Pan Am track/signal work – Started Spr 2015
- Service to start Fall 2016





# Wachusett Layover - Site







# Wachusett Layover - Walls







# Wachusett Station - Walls







# Wachusett Station - Parking







# Wachusett Track/Bridge Work







# Wachusett – Track/Bridge Work

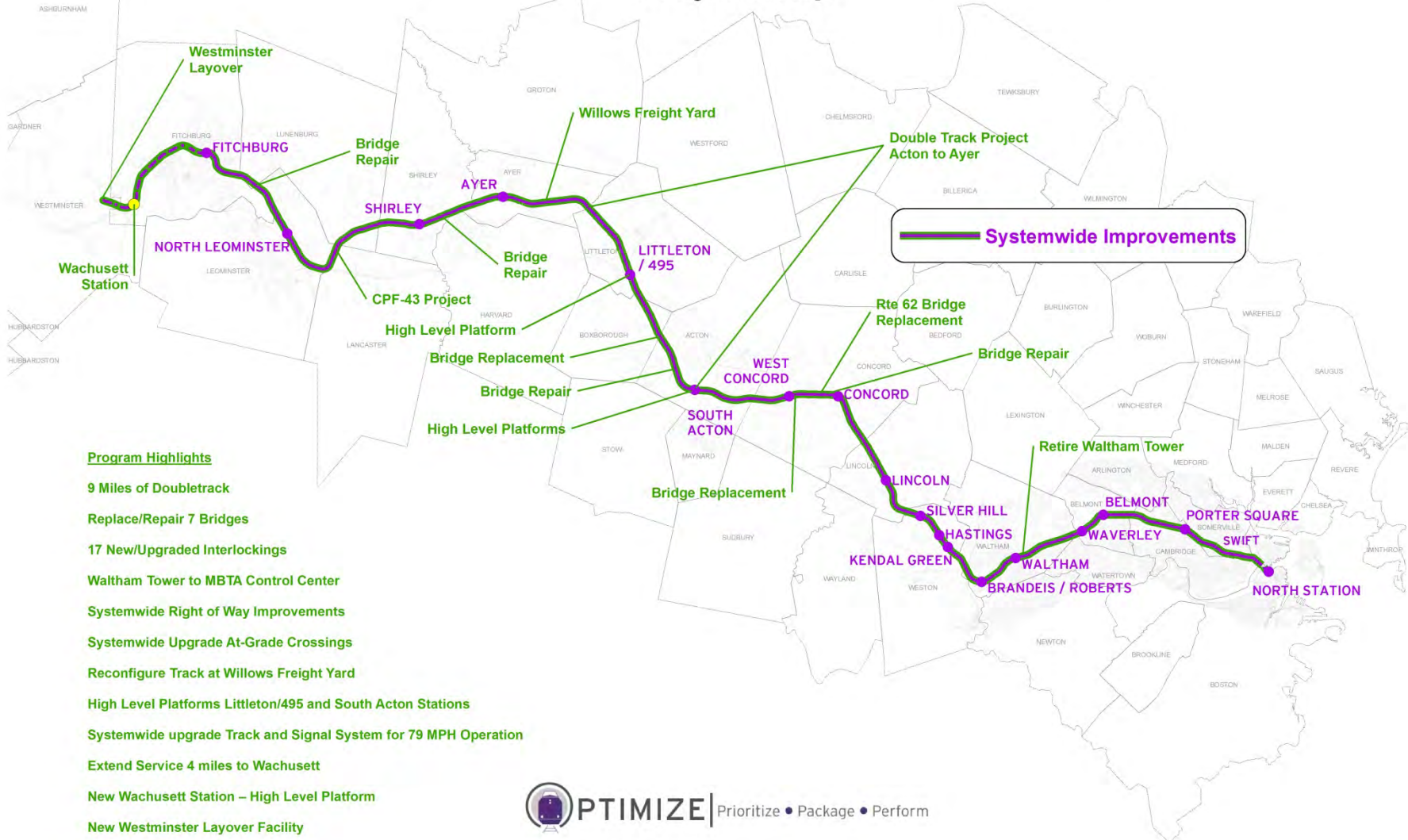






# Project Map

## Fitchburg Commuter Rail Line Improvement Program Project Map



**PTIMIZE** | Prioritize • Package • Perform