



DNA Tribes® SNP Admixture Results by Population

February 11, 2013

Introduction

This document lists population admixture results for the 9 continental zones and 21 world regions identified by DNA Tribes® SNP analysis as of February 11, 2013. DNA Tribes® SNP analysis is performed based on proprietary statistical algorithms not available elsewhere.

Unlike tests using linked SNPs to locate family relatives and identify recent ancestry within the past few centuries, **DNA Tribes® SNP results can express the more ancient genetic links between populations.** For this reason, DNA Tribes® SNP results can differ from other admixture analyses using similar reference samples.

Each person’s DNA Tribes® SNP report includes a **full and comprehensive comparison to all populations and regions in our database.** The genetic components in each person’s results can cross perceived ethnic and cultural distinctions to express more ancient migrations and patterns of trade and contact between world populations.

*Note: The admixture components listed in this document are **average percentages for sampled members of each population.** Each person’s results will vary based on what genetic material each person has inherited and the genetic variation within each population.*

Table of Contents

Introduction..... 1

Admixture Analysis: Nine Continental Zones..... 3

 Nine Continental Zones Admixture: African Populations (Part 1) 4

 Nine Continental Zones Admixture: African Populations (Part 2) 5

 Nine Continental Zones Admixture: African Populations (Part 3) 6

 Nine Continental Zones Admixture: African Populations (Part 4) 7

 Nine Continental Zones Admixture: Middle Eastern Populations (Part 1) 8

 Nine Continental Zones Admixture: Middle Eastern Populations (Part 2) 9

 Nine Continental Zones Admixture: European Populations (Part 1) 10

 Nine Continental Zones Admixture: European Populations (Part 2) 11

 Nine Continental Zones Admixture: European Populations (Part 3) 12

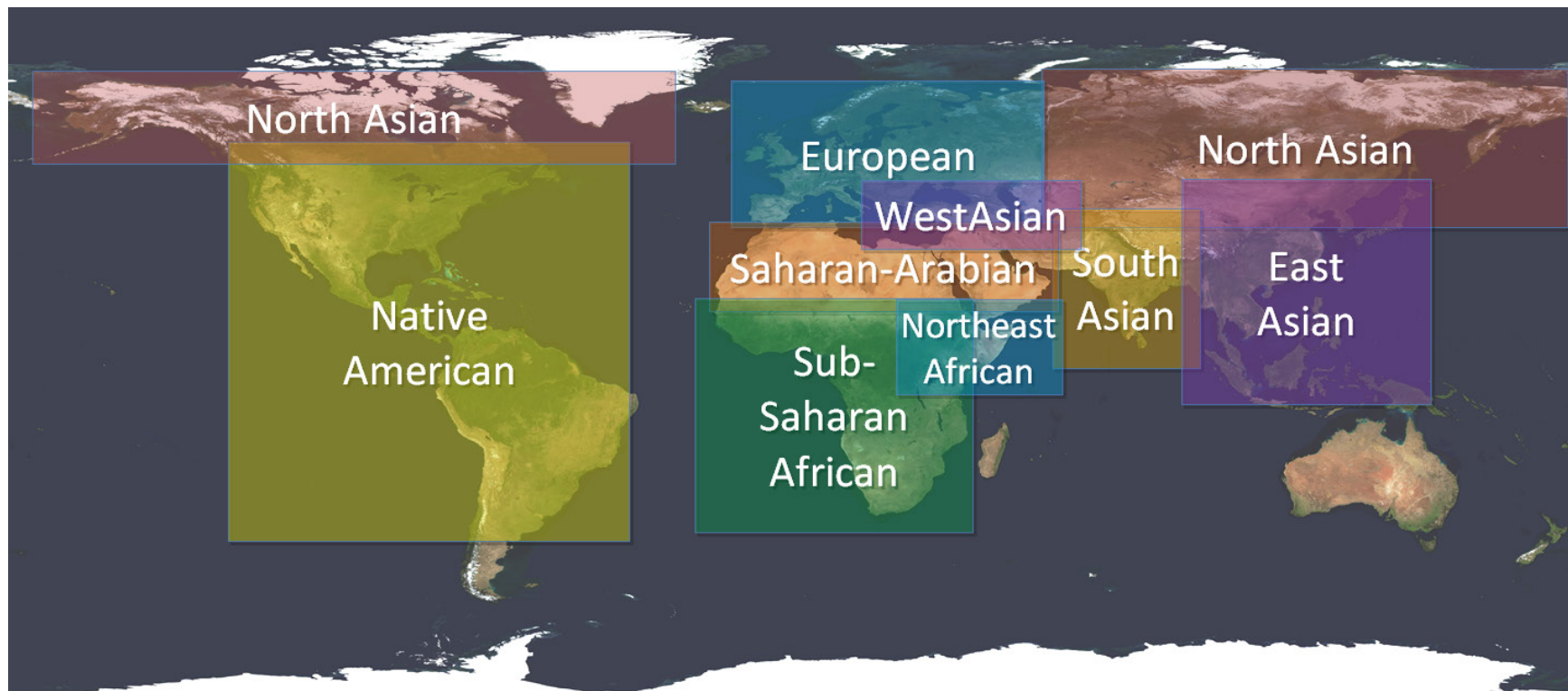


Nine Continental Zones Admixture: South Asian Populations (Part 1)..... 13
Nine Continental Zones Admixture: South Asian Populations (Part 2)..... 14
Nine Continental Zones Admixture: East Asian Populations (Part 1) 15
Nine Continental Zones Admixture: East Asian Populations (Part 2) 16
Nine Continental Zones Admixture: North Asian Populations 17
Nine Continental Zones Admixture: Native American and Latino Populations..... 18

Admixture Analysis: 21 World Regions..... 19
Description of World Regions 20
Neighbor-Joining Tree of World Regions 21
21 World Regions Admixture: African Populations (Part 1) 22
21 World Regions Admixture: African Populations (Part 2) 23
21 World Regions Admixture: African Populations (Part 3) 24
21 World Regions Admixture: African Populations (Part 4) 25
21 World Regions Admixture: Middle Eastern Populations (Part 1) 26
21 World Regions Admixture: Middle Eastern Populations (Part 2) 27
21 World Regions Admixture: European Populations (Part 1) 28
21 World Regions Admixture: European Populations (Part 2) 29
21 World Regions Admixture: European Populations (Part 3) 30
21 World Regions Admixture: South Asian Populations (Part 1)..... 31
21 World Regions Admixture: South Asian Populations (Part 2)..... 32
21 World Regions Admixture: East Asian Populations (Part 1)..... 33
21 World Regions Admixture: East Asian Populations (Part 2)..... 34
21 World Regions Admixture: North Asian Populations..... 35
21 World Regions Admixture: Native American and Latino Populations 36

Admixture Analysis: Nine Continental Zones

The first group of admixture tables is based on the nine continental zones (illustrated in the map below). Each continental zone can include multiple cultures and languages and cross perceived boundaries between modern nations and ethnic groups. Admixture results listed below are **average scores for individual members of each population**. However, each person's results will vary based on what genetic material each person has inherited and the genetic variation within each population.



Nine Continental Zones Admixture: African Populations (Part 1)

Row Labels	Saharan-Arabian	Sub-Saharan African	European	Northeast African	Native American	East Asian	North Asian	West Asian	South Asian
Aka Central African Republic	0.0%	100.0%	0.0%	0.0%	0.0%	0.0%	0.0%	0.0%	0.0%
Bantu South Africa	0.0%	100.0%	0.0%	0.0%	0.0%	0.0%	0.0%	0.0%	0.0%
Coloured Colesberg South Africa	0.5%	71.3%	16.7%	0.5%	0.5%	2.1%	0.8%	2.0%	5.6%
Coloured Wellington South Africa	0.8%	43.4%	16.7%	1.4%	1.0%	9.0%	1.0%	2.1%	24.6%
Gui and Gana San Botswana	0.0%	100.0%	0.0%	0.0%	0.0%	0.0%	0.0%	0.0%	0.0%
Hadza Tanzania	0.0%	72.6%	0.0%	27.0%	0.2%	0.1%	0.1%	0.0%	0.0%
Juoansi San Tsumkwe Namibia	0.0%	100.0%	0.0%	0.0%	0.0%	0.0%	0.0%	0.0%	0.0%
Karretjie San Colesberg South Africa	0.0%	99.7%	0.0%	0.0%	0.3%	0.0%	0.0%	0.0%	0.0%
Khomani San Askham South Africa	0.0%	99.4%	0.1%	0.0%	0.1%	0.0%	0.1%	0.3%	0.0%
Khomani San South Africa	0.0%	97.4%	0.5%	0.0%	0.3%	0.2%	0.3%	0.4%	0.9%
Khwe San Caprivi Southern Africa	0.1%	99.7%	0.1%	0.0%	0.1%	0.0%	0.0%	0.0%	0.0%
Kung Kalahari Desert	0.0%	99.9%	0.0%	0.0%	0.1%	0.0%	0.0%	0.0%	0.0%
Mbuti East-Central Africa	0.0%	100.0%	0.0%	0.0%	0.0%	0.0%	0.0%	0.0%	0.0%
Nama Khoe Windhoek Namibia	0.0%	96.4%	0.9%	0.6%	0.8%	0.1%	0.3%	0.8%	0.0%
Nguni South Africa	0.0%	100.0%	0.0%	0.0%	0.0%	0.0%	0.0%	0.0%	0.0%
Pedi South Africa	0.0%	98.7%	0.7%	0.0%	0.0%	0.0%	0.0%	0.5%	0.0%
San Namibia	0.0%	100.0%	0.0%	0.0%	0.0%	0.0%	0.0%	0.0%	0.0%
Sandawe Tanzania	0.0%	56.2%	0.0%	43.4%	0.2%	0.1%	0.0%	0.0%	0.1%
Sotho South Africa	0.0%	100.0%	0.0%	0.0%	0.0%	0.0%	0.0%	0.0%	0.0%
Tswana South Africa	0.0%	98.7%	0.6%	0.0%	0.0%	0.0%	0.0%	0.0%	0.7%
Xun San Menongue Angola	0.0%	100.0%	0.0%	0.0%	0.0%	0.0%	0.0%	0.0%	0.0%

Nine Continental Zones Admixture: African Populations (Part 2)

Population	Saharan-Arabian	Sub-Saharan African	European	Northeast African	Native American	East Asian	North Asian	West Asian	South Asian
African Qatar	5.1%	47.5%	0.7%	29.5%	0.1%	0.8%	0.3%	7.1%	8.9%
African-American Southwest USA	1.8%	75.6%	16.2%	0.4%	2.9%	0.6%	0.8%	0.5%	1.2%
Bambara West Africa	0.2%	99.4%	0.0%	0.0%	0.1%	0.2%	0.0%	0.0%	0.0%
Bamoun Cameroon	0.0%	99.9%	0.0%	0.0%	0.0%	0.0%	0.0%	0.0%	0.0%
Bantu Kenya	0.0%	90.5%	0.0%	8.9%	0.1%	0.1%	0.2%	0.0%	0.2%
Brong	0.2%	99.6%	0.0%	0.0%	0.0%	0.0%	0.0%	0.0%	0.2%
Dogon West Africa	0.7%	98.8%	0.0%	0.0%	0.2%	0.3%	0.1%	0.0%	0.0%
Dominican Republic	12.7%	38.2%	36.2%	2.1%	6.8%	0.2%	0.1%	3.5%	0.3%
Fang Cameroon	0.0%	99.9%	0.0%	0.0%	0.0%	0.0%	0.0%	0.0%	0.0%
Fulani Nigeria	32.8%	61.8%	0.5%	4.7%	0.1%	0.1%	0.1%	0.0%	0.0%
Hausa Nigeria	0.8%	98.3%	0.0%	0.6%	0.0%	0.1%	0.1%	0.0%	0.1%
Herero Namibia	0.0%	99.9%	0.0%	0.0%	0.1%	0.0%	0.0%	0.0%	0.0%
Igbo Nigeria	0.1%	99.3%	0.2%	0.1%	0.0%	0.2%	0.0%	0.0%	0.1%
Kaba Chad	0.1%	98.6%	0.0%	0.8%	0.0%	0.4%	0.0%	0.0%	0.0%
Kongo	0.0%	100.0%	0.0%	0.0%	0.0%	0.0%	0.0%	0.0%	0.0%
Luhya Kenya	0.1%	91.8%	0.0%	7.6%	0.1%	0.3%	0.1%	0.0%	0.1%
Mandenka Senegal	1.3%	98.4%	0.0%	0.0%	0.1%	0.0%	0.1%	0.0%	0.1%
Yoruba Nigeria	0.1%	99.7%	0.0%	0.0%	0.0%	0.1%	0.0%	0.0%	0.0%

Nine Continental Zones Admixture: African Populations (Part 3)

Population	Saharan-Arabian	Sub-Saharan African	European	Northeast African	Native American	East Asian	North Asian	West Asian	South Asian
Afar Ethiopia	7.8%	0.0%	0.7%	89.1%	0.1%	0.1%	0.2%	2.0%	0.1%
Alur East-Central Africa	0.0%	91.9%	0.0%	8.1%	0.0%	0.0%	0.0%	0.0%	0.0%
Amhara Ethiopia	13.7%	0.0%	0.8%	82.0%	0.0%	0.2%	0.1%	3.0%	0.2%
Anuak Ethiopia	0.0%	73.0%	0.0%	27.0%	0.0%	0.0%	0.0%	0.0%	0.0%
Ari Blacksmith Ethiopia	0.0%	34.6%	0.0%	65.4%	0.0%	0.1%	0.0%	0.0%	0.0%
Ari Cultivator Ethiopia	0.0%	29.8%	0.0%	70.1%	0.0%	0.1%	0.0%	0.0%	0.0%
Bulala Chad	0.0%	76.1%	0.0%	23.9%	0.0%	0.0%	0.0%	0.0%	0.0%
Gumuz Ethiopia	0.0%	58.8%	0.0%	41.2%	0.0%	0.0%	0.0%	0.0%	0.0%
Hema East-Central Africa	0.5%	66.4%	0.0%	32.6%	0.2%	0.0%	0.1%	0.1%	0.0%
Jewish Ethiopia	12.6%	1.6%	0.6%	84.0%	0.0%	0.0%	0.0%	1.2%	0.0%
Maasai Kenya	0.0%	42.8%	0.0%	57.0%	0.0%	0.1%	0.0%	0.0%	0.1%
Mada Cameroon	0.0%	91.0%	0.0%	8.8%	0.1%	0.1%	0.0%	0.0%	0.0%
Oromo Ethiopia	2.9%	2.9%	0.1%	92.7%	0.1%	0.1%	0.0%	1.2%	0.0%
Somali Ethiopia	0.1%	0.3%	0.1%	99.3%	0.2%	0.0%	0.0%	0.0%	0.0%
Somalia	0.0%	0.5%	0.0%	99.4%	0.0%	0.0%	0.0%	0.0%	0.1%
South Sudanese	0.0%	74.9%	0.0%	25.1%	0.0%	0.0%	0.0%	0.0%	0.0%
Tigray Ethiopia	16.5%	0.0%	0.3%	79.9%	0.2%	0.0%	0.0%	2.9%	0.1%
Wolayta Ethiopia	0.0%	6.0%	0.0%	93.7%	0.2%	0.1%	0.0%	0.0%	0.0%

Nine Continental Zones Admixture: African Populations (Part 4)

Population	Saharan-Arabian	Sub-Saharan African	European	Northeast African	Native American	East Asian	North Asian	West Asian	South Asian
Algeria	83.4%	8.0%	6.0%	2.1%	0.1%	0.2%	0.3%	0.0%	0.0%
Canary Islands	27.2%	0.5%	70.3%	0.1%	0.2%	0.1%	0.0%	1.6%	0.1%
Egypt 1	71.3%	0.8%	0.8%	10.6%	0.0%	0.1%	0.0%	16.0%	0.3%
Egypt 2	73.9%	1.3%	1.0%	4.9%	0.2%	0.0%	0.1%	17.8%	0.8%
Jewish Morocco	30.7%	0.0%	21.2%	0.0%	0.0%	0.0%	0.0%	48.1%	0.0%
Libya	89.4%	3.9%	2.3%	2.5%	0.1%	0.1%	0.2%	1.4%	0.0%
Morocco	84.4%	11.7%	0.4%	2.7%	0.1%	0.0%	0.0%	0.7%	0.0%
Mozabite Algeria-Mزاب	87.1%	10.4%	1.7%	0.7%	0.1%	0.1%	0.0%	0.0%	0.0%
North Morocco	89.2%	2.9%	7.1%	0.5%	0.0%	0.0%	0.2%	0.0%	0.0%
Saharawi	88.9%	10.7%	0.0%	0.3%	0.1%	0.0%	0.0%	0.0%	0.0%
South Morocco	69.8%	26.1%	0.7%	3.1%	0.1%	0.0%	0.2%	0.0%	0.0%
Tunisia	86.6%	2.8%	8.5%	1.8%	0.2%	0.0%	0.0%	0.0%	0.0%

Nine Continental Zones Admixture: Middle Eastern Populations (Part 1)

Population	Saharan-Arabian	Sub-Saharan African	European	Northeast African	Native American	East Asian	North Asian	West Asian	South Asian
Arab Qatar	64.5%	1.2%	0.3%	3.0%	0.2%	0.2%	0.1%	28.0%	2.6%
Armenian	1.7%	0.0%	5.9%	0.0%	0.1%	0.0%	0.2%	92.1%	0.1%
Ashkenazi Jewish Europe	17.1%	0.0%	36.9%	0.0%	0.1%	0.0%	0.0%	45.7%	0.2%
Assyrian	3.2%	0.0%	0.0%	0.2%	0.0%	0.0%	0.0%	96.6%	0.0%
Bedouin Negev Desert Israel	69.3%	1.3%	0.6%	2.9%	0.1%	0.0%	0.0%	25.5%	0.3%
Cyprus	12.9%	0.0%	6.8%	0.3%	0.0%	0.0%	0.0%	79.9%	0.0%
Druze Israel-Carmel	18.6%	0.0%	0.6%	0.1%	0.0%	0.0%	0.0%	80.6%	0.1%
Iran	4.9%	1.1%	0.0%	1.3%	0.1%	0.2%	0.2%	79.4%	12.8%
Jewish Azerbaijan	1.0%	0.1%	0.0%	0.0%	0.0%	0.0%	0.0%	98.9%	0.0%
Jewish Georgia	14.1%	0.0%	0.0%	0.0%	0.0%	0.0%	0.0%	85.9%	0.0%
Jewish Iran	9.4%	0.0%	0.0%	0.1%	0.2%	0.2%	0.0%	89.9%	0.3%
Jewish Iraq	12.0%	0.0%	0.0%	0.2%	0.0%	0.0%	0.0%	87.6%	0.2%
Jewish Yemen	71.9%	0.0%	0.0%	0.0%	0.0%	0.0%	0.0%	28.1%	0.0%
Jordan	29.0%	1.4%	0.1%	5.5%	0.0%	0.3%	0.1%	63.6%	0.1%
Kurdish	3.0%	0.1%	0.8%	0.1%	0.0%	0.0%	0.0%	88.3%	7.6%
Lebanon	22.1%	0.0%	1.4%	3.7%	0.3%	0.0%	0.0%	71.8%	0.7%
Palestinian Israel	40.8%	0.2%	0.5%	2.7%	0.2%	0.1%	0.1%	55.4%	0.1%
Persian Qatar	11.4%	3.2%	0.2%	2.3%	0.3%	0.0%	0.0%	59.8%	22.8%
Saudi Arabia	65.7%	1.1%	0.0%	2.0%	0.0%	0.2%	0.0%	29.4%	1.6%
Sephardic Jewish Bulgaria	20.2%	0.0%	26.7%	0.1%	0.0%	0.0%	0.0%	53.0%	0.0%
Sephardic Jewish Turkey	23.3%	0.0%	13.4%	0.0%	0.0%	0.0%	0.0%	63.3%	0.0%
Syria	22.7%	0.0%	1.4%	2.5%	0.1%	0.0%	0.0%	71.6%	1.6%
Turkey	1.8%	0.1%	4.8%	0.1%	0.6%	1.0%	3.5%	86.6%	1.6%
Yemen	56.6%	8.4%	0.0%	9.8%	0.9%	0.2%	0.3%	19.0%	4.9%

Nine Continental Zones Admixture: Middle Eastern Populations (Part 2)

Population	Saharan-Arabian	Sub-Saharan African	European	Northeast African	Native American	East Asian	North Asian	West Asian	South Asian
Abkhazian	0.0%	0.1%	3.1%	0.0%	0.3%	0.1%	0.0%	95.3%	1.1%
Adyghe North Caucasus	0.0%	0.1%	8.4%	0.0%	0.7%	0.2%	2.6%	85.8%	2.2%
Balkar	0.0%	0.0%	10.7%	0.0%	1.2%	1.2%	3.0%	81.8%	2.2%
Chechen	0.0%	0.0%	11.2%	0.0%	1.0%	0.0%	0.8%	84.3%	2.8%
Dargin Urkarah Dagestan	0.0%	0.0%	16.1%	0.0%	1.2%	0.0%	0.4%	72.5%	9.8%
Georgia Caucasus	0.0%	0.0%	3.5%	0.0%	0.1%	0.0%	0.3%	96.1%	0.0%
Kumyk	0.0%	0.0%	8.7%	0.0%	1.3%	0.6%	4.4%	80.4%	4.5%
Lezgin Caucasus	0.0%	0.0%	10.0%	0.0%	0.8%	0.0%	0.0%	82.3%	6.9%
Nogay	0.0%	0.1%	15.9%	0.1%	1.1%	2.8%	20.8%	54.3%	4.9%
North Ossetia	0.0%	0.0%	1.1%	0.0%	0.7%	0.9%	4.7%	91.0%	1.7%
Tajik	0.0%	0.2%	17.4%	0.0%	1.9%	0.8%	9.3%	32.4%	38.0%
Turkmen	0.5%	0.5%	6.3%	0.4%	1.3%	2.4%	12.2%	48.2%	28.2%

Nine Continental Zones Admixture: European Populations (Part 1)

Population	Saharan-Arabian	Sub-Saharan African	European	Northeast African	Native American	East Asian	North Asian	West Asian	South Asian
Andalusia Spain	15.9%	0.0%	81.3%	0.0%	0.0%	0.0%	0.0%	2.7%	0.0%
Basque France	7.1%	0.0%	91.3%	0.0%	0.0%	0.0%	0.0%	1.6%	0.0%
Basque Spain	8.4%	0.0%	91.0%	0.0%	0.0%	0.1%	0.0%	0.5%	0.0%
Bergamo Italy	8.4%	0.0%	76.3%	0.0%	0.0%	0.0%	0.0%	15.3%	0.1%
Galicia Spain	14.2%	0.0%	85.0%	0.2%	0.0%	0.0%	0.0%	0.5%	0.0%
Greek Mixed	8.5%	0.0%	47.3%	0.0%	0.0%	0.0%	0.0%	44.2%	0.0%
Italy General	7.7%	0.0%	53.0%	0.1%	0.0%	0.0%	0.0%	39.2%	0.0%
Portugal	15.1%	0.0%	81.0%	1.5%	0.0%	0.0%	0.0%	2.3%	0.0%
Sardinia	24.7%	0.0%	65.6%	0.0%	0.0%	0.0%	0.0%	9.7%	0.0%
Southern Italy and Sicily	12.5%	0.0%	29.1%	0.1%	0.0%	0.0%	0.0%	58.3%	0.0%
Spain	13.1%	0.1%	81.1%	0.0%	0.0%	0.1%	0.0%	5.6%	0.0%
Tuscany Italy	10.1%	0.0%	59.5%	0.0%	0.0%	0.0%	0.0%	30.4%	0.0%

Nine Continental Zones Admixture: European Populations (Part 2)

Population	Saharan-Arabian	Sub-Saharan African	European	Northeast African	Native American	East Asian	North Asian	West Asian	South Asian
Argyll and Bute Scottish Highlands	0.0%	0.0%	98.2%	0.0%	1.3%	0.0%	0.0%	0.0%	0.5%
Cornwall West Britain	0.2%	0.1%	98.8%	0.0%	0.2%	0.0%	0.0%	0.3%	0.3%
England	0.0%	0.0%	99.1%	0.0%	0.2%	0.1%	0.0%	0.4%	0.2%
European-American Utah	0.3%	0.1%	97.4%	0.1%	0.2%	0.1%	0.1%	1.4%	0.2%
France	2.5%	0.1%	93.8%	0.0%	0.1%	0.0%	0.0%	3.5%	0.0%
Germany	0.0%	0.1%	99.9%	0.0%	0.0%	0.0%	0.0%	0.0%	0.0%
Ireland	0.0%	0.2%	99.3%	0.0%	0.4%	0.0%	0.0%	0.0%	0.1%
Netherlands	0.0%	0.0%	98.5%	0.1%	0.1%	0.0%	0.0%	1.2%	0.0%
Norway	0.0%	0.0%	99.1%	0.0%	0.6%	0.0%	0.2%	0.0%	0.0%
Orkney Islands Scotland	0.1%	0.1%	98.7%	0.0%	0.2%	0.0%	0.2%	0.2%	0.5%
Sweden	0.0%	0.0%	98.6%	0.0%	0.6%	0.0%	0.6%	0.0%	0.1%

Nine Continental Zones Admixture: European Populations (Part 3)

Population	Saharan-Arabian	Sub-Saharan African	European	Northeast African	Native American	East Asian	North Asian	West Asian	South Asian
Belarus	0.0%	0.0%	98.7%	0.0%	0.3%	0.2%	0.5%	0.0%	0.4%
Bulgaria	3.1%	0.1%	77.3%	0.0%	0.0%	0.2%	0.1%	19.1%	0.1%
Chuvash Russian Federation	0.0%	0.2%	69.5%	0.1%	2.6%	0.1%	25.5%	0.2%	1.8%
Finland	0.0%	0.1%	92.0%	0.0%	1.6%	0.3%	5.9%	0.0%	0.1%
Hungary	0.3%	0.0%	95.4%	0.1%	0.5%	0.2%	0.0%	3.2%	0.3%
Lithuania	0.0%	0.1%	99.1%	0.0%	0.4%	0.0%	0.4%	0.0%	0.0%
Mordvin	0.0%	0.1%	90.1%	0.0%	1.8%	0.1%	6.9%	0.0%	1.1%
Poland	0.0%	0.1%	99.0%	0.0%	0.4%	0.0%	0.4%	0.1%	0.1%
Romania	3.3%	0.0%	73.8%	0.0%	0.3%	0.0%	0.0%	22.4%	0.1%
Russia General	0.1%	0.1%	95.7%	0.1%	1.3%	0.1%	1.6%	0.6%	0.4%
Serbia and Croatia	2.2%	0.0%	89.6%	0.8%	0.0%	0.0%	0.0%	7.5%	0.0%
Slovenia	0.2%	0.1%	97.2%	0.0%	0.1%	0.1%	0.2%	1.5%	0.6%
Ukraine	0.0%	0.0%	97.8%	0.0%	0.4%	0.3%	0.6%	0.1%	0.8%
Vologda Northern Russia	0.0%	0.2%	90.3%	0.0%	2.0%	0.4%	6.8%	0.0%	0.4%

Nine Continental Zones Admixture: South Asian Populations (Part 1)

Population	Saharan-Arabian	Sub-Saharan African	European	Northeast African	Native American	East Asian	North Asian	West Asian	South Asian
Arain Punjab Pakistan	0.0%	0.1%	2.6%	0.0%	0.2%	0.0%	0.0%	11.1%	86.0%
Balochi Pakistan	0.5%	1.2%	0.5%	0.3%	0.0%	0.0%	0.0%	37.5%	60.0%
Bene Israel India	6.5%	0.0%	0.0%	0.5%	0.0%	0.0%	0.0%	13.3%	79.7%
Brahmin Andhra Pradesh India	0.0%	0.0%	0.0%	0.0%	0.7%	0.0%	0.0%	0.0%	99.3%
Brahmin Tamil Nadu India	0.0%	0.1%	0.1%	0.0%	0.1%	0.2%	0.0%	0.1%	99.4%
Brahmin Uttar Pradesh India	0.0%	0.0%	3.5%	0.0%	0.2%	0.1%	0.0%	0.3%	95.9%
Brahui Pakistan	0.4%	1.7%	0.1%	0.5%	0.0%	0.0%	0.0%	39.2%	58.0%
Burusho Pakistan	0.1%	0.0%	4.9%	0.1%	1.4%	1.4%	3.9%	13.7%	74.6%
Cochin Jewish India	2.2%	0.0%	0.0%	1.0%	0.6%	0.0%	0.0%	0.0%	96.2%
Gujarat India	0.0%	0.1%	0.8%	0.1%	0.2%	0.2%	0.0%	0.9%	97.8%
Kalash Pakistan	0.0%	0.0%	10.3%	0.0%	0.6%	0.0%	0.1%	28.2%	60.8%
Kshatriya Uttar Pradesh India	0.0%	0.3%	2.1%	0.2%	0.4%	0.5%	0.0%	0.0%	96.5%
Makrani Pakistan	1.0%	4.6%	0.0%	0.5%	0.0%	0.0%	0.0%	40.4%	53.6%
Nepal	0.0%	0.2%	3.5%	0.1%	0.6%	19.8%	4.9%	0.6%	70.3%
Pashtun Pakistan	0.0%	0.1%	6.8%	0.0%	0.4%	0.1%	1.3%	22.0%	69.4%
Sindhi Pakistan	0.1%	2.3%	1.7%	0.7%	0.1%	0.0%	0.0%	13.9%	81.4%

Nine Continental Zones Admixture: South Asian Populations (Part 2)

Population	Saharan-Arabian	Sub-Saharan African	European	Northeast African	Native American	East Asian	North Asian	West Asian	South Asian
Chamar India	0.0%	0.1%	0.0%	0.0%	0.4%	5.8%	0.0%	0.0%	93.7%
Chenchu India	0.0%	0.3%	0.0%	0.0%	0.1%	6.4%	0.0%	0.0%	93.3%
Dalit Tamil Nadu India	0.0%	0.1%	0.0%	0.0%	0.0%	5.0%	0.0%	0.0%	95.0%
Dharkar India	0.0%	0.1%	0.0%	0.0%	0.2%	1.0%	0.0%	0.0%	98.8%
Dusadh India	0.0%	0.0%	0.0%	0.0%	0.0%	3.0%	0.0%	0.0%	97.0%
Gond India	0.0%	0.1%	0.3%	0.0%	0.2%	13.8%	0.0%	0.0%	85.6%
Hakkipikki India	0.0%	0.0%	0.0%	0.0%	0.0%	7.2%	0.0%	0.0%	92.8%
Indian Singaporean	0.0%	0.3%	1.5%	0.0%	0.1%	2.3%	0.0%	1.0%	94.7%
Irula South India	0.0%	0.6%	0.0%	0.0%	0.2%	7.2%	0.0%	0.0%	92.0%
Kanjar India	0.0%	0.2%	0.0%	0.0%	0.5%	0.5%	0.0%	0.0%	98.8%
Kol India	0.0%	0.2%	0.0%	0.0%	0.2%	5.3%	0.1%	0.0%	94.2%
Kurumba India	0.0%	0.0%	0.0%	0.0%	0.0%	0.4%	0.0%	0.0%	99.5%
Madiga Andhra Pradesh India	0.0%	0.1%	0.0%	0.0%	0.0%	7.0%	0.0%	0.0%	92.8%
Mala Andhra Pradesh India	0.0%	0.3%	0.0%	0.0%	0.0%	6.8%	0.0%	0.0%	92.9%
Muslim Uttar Pradesh India	0.0%	0.0%	0.0%	0.0%	0.3%	0.6%	0.5%	0.0%	98.6%
North Kannadi India	0.0%	0.4%	0.0%	0.0%	0.1%	7.1%	0.0%	0.0%	92.3%
Paniya India	0.0%	1.2%	0.0%	0.0%	0.0%	16.0%	0.0%	0.0%	82.8%
Piramalai Kallar India	0.0%	0.2%	0.0%	0.0%	0.0%	3.8%	0.0%	0.0%	95.9%
Pulliyar India	0.0%	0.5%	0.0%	0.0%	0.0%	14.5%	0.0%	0.0%	85.0%
Romani Europe	0.1%	0.0%	52.4%	0.1%	0.3%	0.2%	0.0%	27.6%	19.4%
Sakilli India	0.0%	0.6%	0.0%	0.0%	0.0%	3.5%	0.0%	0.0%	95.9%
Scheduled Caste Uttar Pradesh India	0.0%	0.0%	0.0%	0.0%	0.2%	2.2%	0.0%	0.0%	97.6%
Velama India	0.0%	0.1%	0.0%	0.0%	0.0%	1.0%	0.0%	0.0%	98.9%

Nine Continental Zones Admixture: East Asian Populations (Part 1)

Population	Saharan-Arabian	Sub-Saharan African	European	Northeast African	Native American	East Asian	North Asian	West Asian	South Asian
Bonda Orissa India	0.0%	1.3%	0.0%	0.0%	0.0%	42.9%	0.0%	0.0%	55.8%
Cambodia	0.3%	1.5%	0.1%	0.1%	0.0%	87.7%	0.0%	0.1%	10.2%
Dai China	0.0%	0.1%	0.1%	0.0%	0.0%	99.8%	0.0%	0.0%	0.0%
Ho Bihar India	0.0%	1.1%	0.0%	0.0%	0.0%	33.5%	0.0%	0.0%	65.4%
Iban Borneo	0.2%	1.5%	0.0%	0.4%	0.1%	93.5%	0.0%	0.0%	4.3%
Khmer Cambodia	0.7%	1.0%	0.3%	0.1%	0.1%	90.2%	0.0%	0.0%	7.7%
Malay Singaporean	0.3%	0.9%	0.1%	0.7%	0.1%	85.0%	0.0%	0.0%	12.9%
Melanesian Bougainville	0.0%	7.5%	0.0%	0.3%	0.4%	51.4%	0.0%	0.0%	40.4%
Papuan New Guinea	0.0%	10.6%	0.0%	0.0%	0.2%	38.9%	0.1%	0.0%	50.2%
Samoa	0.1%	2.2%	0.0%	0.5%	0.0%	84.5%	0.0%	0.0%	12.8%
Thailand	0.2%	1.4%	0.2%	0.8%	0.0%	78.6%	0.0%	0.0%	18.9%
Tonga	0.4%	3.2%	0.0%	0.7%	0.0%	83.1%	0.0%	0.0%	12.6%
Vietnam	0.0%	0.4%	0.0%	0.0%	0.0%	99.6%	0.0%	0.0%	0.0%

Nine Continental Zones Admixture: East Asian Populations (Part 2)

Population	Saharan-Arabian	Sub-Saharan African	European	Northeast African	Native American	East Asian	North Asian	West Asian	South Asian
Burma	0.0%	0.5%	0.0%	0.0%	0.2%	80.8%	0.0%	0.0%	18.5%
Chinese Singaporean	0.0%	0.1%	0.0%	0.0%	0.1%	99.8%	0.0%	0.0%	0.0%
Chinese-American Denver CO	0.0%	0.0%	0.0%	0.0%	0.1%	99.7%	0.2%	0.0%	0.0%
Garo Meghalaya India	0.0%	1.0%	0.0%	0.2%	0.1%	85.1%	0.0%	0.0%	13.6%
Han Beijing China	0.0%	0.0%	0.0%	0.0%	0.3%	97.9%	1.8%	0.0%	0.0%
Han China	0.0%	0.0%	0.0%	0.0%	0.1%	99.8%	0.1%	0.0%	0.0%
Han Northern China	0.0%	0.0%	0.0%	0.0%	0.8%	95.5%	3.6%	0.1%	0.0%
Han Southern China	0.0%	0.0%	0.0%	0.0%	0.1%	99.9%	0.0%	0.0%	0.0%
Japan	0.0%	0.0%	0.0%	0.0%	0.8%	89.1%	10.0%	0.0%	0.0%
Lahu China	0.1%	0.4%	0.0%	0.0%	0.5%	99.0%	0.0%	0.0%	0.0%
Miao China	0.0%	0.0%	0.0%	0.0%	0.0%	99.9%	0.0%	0.1%	0.0%
Monguor China	0.4%	0.3%	0.7%	0.2%	0.2%	82.6%	15.0%	0.5%	0.0%
Naga India	0.0%	0.0%	0.0%	0.0%	0.4%	95.2%	4.3%	0.0%	0.0%
Naxi China	0.1%	0.5%	0.0%	0.0%	0.1%	97.1%	1.9%	0.0%	0.3%
She China	0.0%	0.1%	0.0%	0.0%	0.0%	99.9%	0.0%	0.0%	0.0%
Tibet	0.0%	0.4%	0.0%	0.1%	0.7%	81.5%	17.1%	0.0%	0.1%
Tujia China	0.0%	0.1%	0.0%	0.0%	0.0%	99.9%	0.0%	0.0%	0.0%
Yi China	0.0%	0.0%	0.0%	0.1%	0.5%	96.2%	3.1%	0.0%	0.0%

Nine Continental Zones Admixture: North Asian Populations

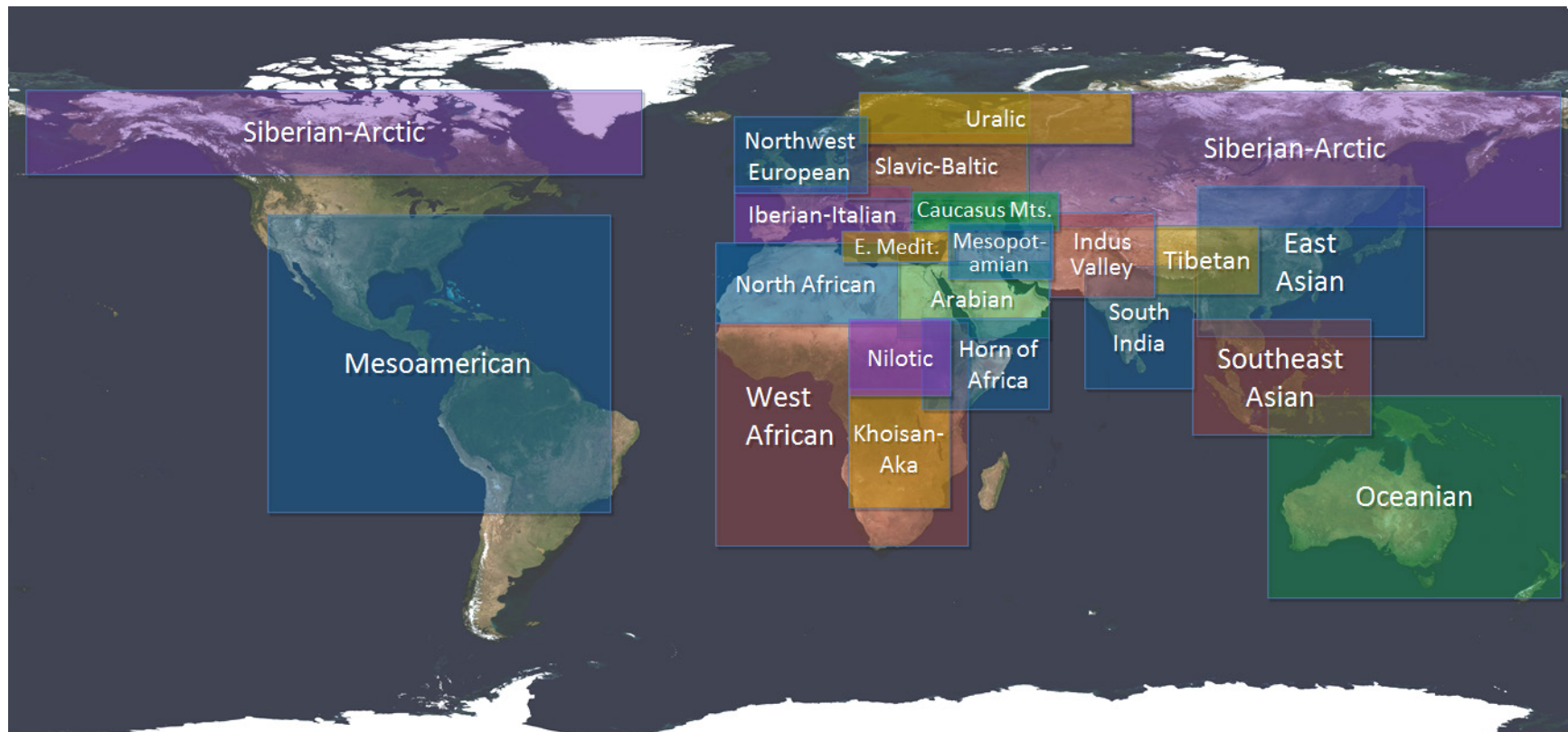
Population	Saharan-Arabian	Sub-Saharan African	European	Northeast African	Native American	East Asian	North Asian	West Asian	South Asian
Altai Russian Federation	0.1%	0.6%	4.2%	0.0%	2.2%	2.7%	85.3%	1.4%	3.4%
Buryat China	0.0%	0.0%	0.0%	0.0%	0.3%	17.4%	82.3%	0.0%	0.0%
Buryat Russian Federation	0.0%	0.0%	0.0%	0.0%	0.2%	10.0%	89.8%	0.0%	0.0%
Chuvash Russian Federation	0.0%	0.2%	69.5%	0.1%	2.6%	0.1%	25.5%	0.2%	1.8%
Daur China	0.0%	0.0%	0.0%	0.0%	0.3%	57.9%	41.9%	0.0%	0.0%
Dolgan Russian Federation	0.0%	0.0%	6.7%	0.0%	0.4%	0.0%	90.9%	0.8%	1.2%
Evenk Russian Federation	0.0%	0.0%	0.0%	0.0%	0.0%	0.0%	100.0%	0.0%	0.0%
Hazara Pakistan	0.2%	0.1%	4.5%	0.1%	0.3%	9.3%	47.9%	17.2%	20.4%
Hezhen China	0.0%	0.0%	0.0%	0.0%	0.3%	55.7%	44.0%	0.0%	0.0%
Kyrgyz	0.6%	0.1%	5.8%	0.3%	0.5%	13.2%	65.9%	7.8%	5.7%
Mongol Mongolia	0.7%	0.2%	1.1%	0.2%	0.7%	14.4%	82.5%	0.0%	0.2%
Mongola China	0.0%	0.0%	0.0%	0.0%	0.6%	59.6%	39.9%	0.0%	0.0%
Nganasan Russian Federation	0.0%	0.0%	0.0%	0.0%	0.1%	0.0%	99.9%	0.0%	0.0%
Oroqen China	0.0%	0.0%	0.0%	0.0%	0.2%	33.3%	66.6%	0.0%	0.0%
Selkup Russian Federation	0.0%	0.2%	20.8%	0.0%	3.6%	0.0%	75.4%	0.0%	0.0%
Tuvinians Russian Federation	0.0%	0.0%	0.0%	0.0%	0.7%	6.5%	92.8%	0.0%	0.0%
Uyghur China	0.3%	0.3%	12.6%	0.0%	0.5%	19.5%	37.6%	13.5%	15.7%
Uzbek Central Asia	0.5%	0.3%	15.4%	0.2%	1.2%	7.9%	36.2%	17.5%	20.8%
Xibo China	0.0%	0.0%	1.3%	0.3%	0.3%	69.9%	28.3%	0.0%	0.0%
Yakut Siberia	0.1%	0.0%	0.9%	0.0%	0.0%	0.0%	98.9%	0.0%	0.0%
Yukaghir Russian Federation	0.0%	0.0%	0.0%	0.0%	2.2%	0.0%	97.9%	0.0%	0.0%

Nine Continental Zones Admixture: Native American and Latino Populations

Population	Saharan-Arabian	Sub-Saharan African	European	Northeast African	Native American	East Asian	North Asian	West Asian	South Asian
Aleut Alaska	0.0%	0.0%	62.9%	0.0%	12.4%	0.8%	22.2%	0.0%	1.7%
Amerindian Colombia	0.1%	0.9%	0.1%	0.0%	98.6%	0.0%	0.0%	0.0%	0.2%
Aymara La Paz Bolivia	2.2%	0.5%	7.4%	0.2%	86.5%	1.1%	0.4%	1.3%	0.4%
Chukchi Russian Federation	0.0%	0.0%	8.5%	0.0%	20.7%	0.5%	70.3%	0.0%	0.0%
Colombia	11.5%	6.6%	46.1%	1.1%	26.5%	0.6%	0.5%	6.7%	0.4%
Eastern Greenland	0.0%	0.0%	9.9%	0.0%	36.1%	1.2%	52.2%	0.0%	0.6%
Ecuador	6.1%	4.4%	28.3%	1.3%	49.0%	1.9%	2.1%	6.1%	0.8%
Karitiana Brazil	0.0%	0.0%	0.0%	0.0%	100.0%	0.0%	0.0%	0.0%	0.0%
Koryak Russian Federation	0.0%	0.0%	5.6%	0.0%	12.9%	0.9%	80.6%	0.0%	0.0%
Maya Mexico	2.3%	0.6%	3.7%	0.3%	87.1%	1.9%	1.4%	1.6%	1.1%
Mexican-American Los Angeles CA	8.9%	1.9%	31.3%	1.2%	45.3%	1.5%	2.4%	6.4%	1.1%
Native American US and Canada	2.7%	1.3%	44.3%	1.1%	42.0%	1.9%	3.5%	1.5%	1.7%
Pima Mexico	0.0%	0.5%	1.0%	0.1%	95.8%	1.2%	1.0%	0.3%	0.2%
Puerto Rico	18.3%	12.5%	49.0%	1.4%	12.7%	0.5%	0.4%	4.9%	0.4%
Surui Brazil	0.0%	0.0%	0.0%	0.0%	100.0%	0.0%	0.0%	0.0%	0.0%
Totonac Mexico	0.1%	0.2%	1.4%	0.0%	94.2%	2.0%	1.6%	0.4%	0.1%
Western Greenland	0.4%	0.1%	22.2%	0.0%	27.8%	0.3%	47.2%	0.0%	1.9%

Admixture Analysis: 21 World Regions

The second group of admixture tables is based on the 21 world regions (illustrated in the map below). Each genetic region can include multiple cultures and languages and cross perceived boundaries between modern countries and ethnic groups (see next page for more detailed descriptions). Admixture results listed below are **average scores for individual members of each population**. However, each person's results will vary based on what genetic material each person has inherited and the genetic variation within each population.

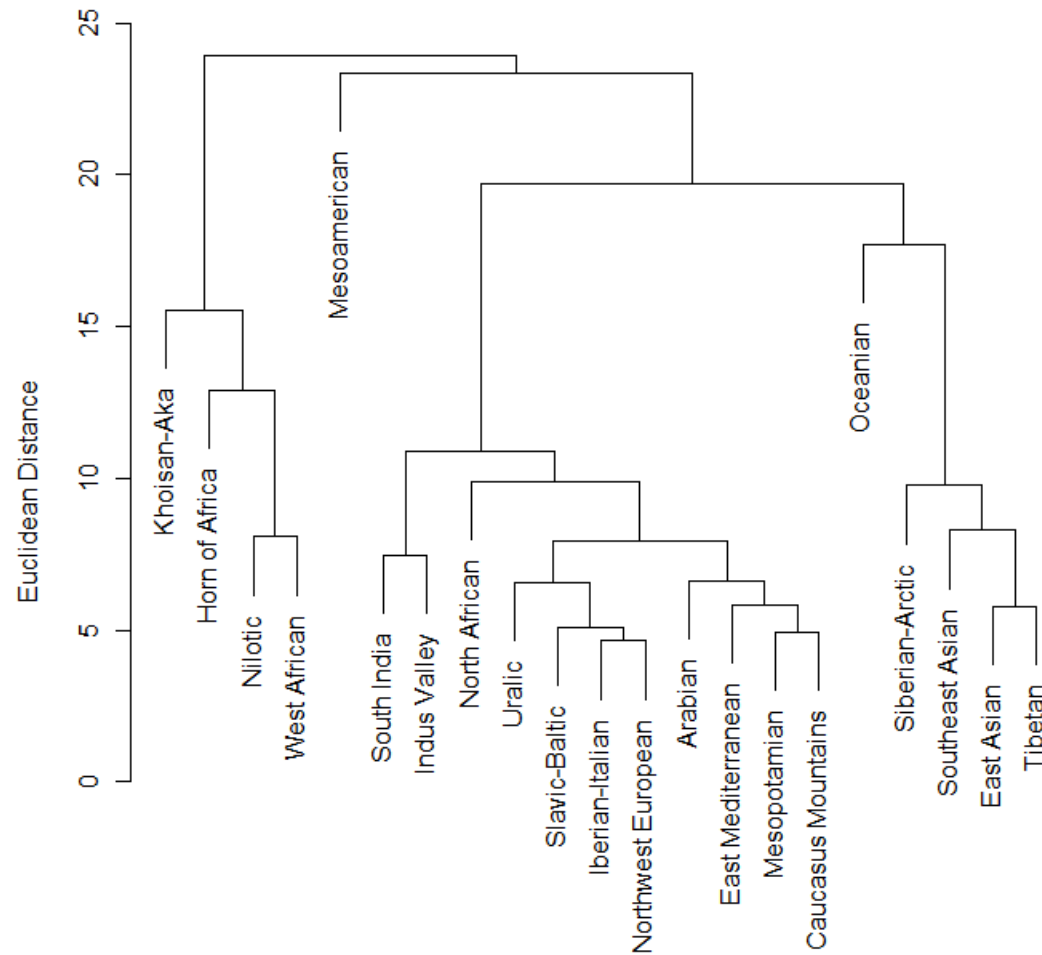


Description of World Regions

World Region	Description of World Region	Other Related Populations
Arabian	Arabian Peninsula; Northeast Africa.	Southwest Asia.
Caucasus Mountains	The Caucasus Mountains.	West Asia.
East Asian	China; Japan.	Mainland Southeast Asia.
East Mediterranean	Cyprus; Malta; European Jewish.	Levant; Anatolia; Italy.
Horn of Africa	Ethiopia; Somalia.	Eastern Africa; Nile Valley.
Iberian-Italian	West Mediterranean.	Throughout Continental Europe.
Indus Valley	Indus River Valley; Hindu Kush Mountains.	Central Asia; Nepal; Northern India.
Khoisan-Aka	Khoisan; Aka; Mbuti.	South African Bantu.
Mesoamerican	Indigenous populations of North, Central and South America.	
Mesopotamian	Anatolia; Transcaucasus; Kurds; Persians.	Southwest Asia.
Nilotic	Nilotic speaking populations of East Africa.	
North African	The Maghreb and Sahara Desert.	Southwestern Europe.
Northwest European	The British Isles; Western Europe; Scandinavia.	Continental Europe.
Oceanian	Melanesian populations of the Pacific Ocean.	Polynesians.
Siberian-Arctic	Indigenous populations of Siberia, Alaska, and Greenland.	Northern Eurasia; Native North Americans.
Slavic-Baltic	Eastern and Central Europe; Balkan Peninsula.	Western Europe.
South India	Southern and Eastern India.	Northern India; Southeast Asia.
Southeast Asian	Malay Archipelago; Polynesia; Mainland Southeast Asia.	Eastern India.
Tibetan	Tibetan Plateau; Northern China.	Highland East Asia.
Uralic	Finland; Northern Russia; Ural Mountains.	Scandinavia; West Siberia.
West African	Western Africa.	Bantu speaking populations of East and Southern Africa.

Neighbor-Joining Tree of World Regions

The neighbor joining tree below illustrates relationships between the 21 world regions based on Euclidean distance. Closely related regions connect towards the bottom of the diagram: for instance, the two most similar regions are the Iberian-Italian and Northwest European regions.



21 World Regions Admixture: African Populations (Part 1)

Population	Khoisan-Aka	West African	Nilotic	Horn of Africa	North African	Arabian	Mesopotamian	East Mediterranean	Iberian-Italian	Northwest European	Slavic-Baltic	Uralic	Caucasus Mountains	Indus Valley	South India	Oceanian	Southeast Asian	East Asian	Tibetan	Siberian-Arctic	Mesoamerican
Aka Central African Republic	52.9%	46.6%	0.4%	0.0%	0.0%	0.0%	0.0%	0.0%	0.0%	0.0%	0.0%	0.0%	0.0%	0.0%	0.0%	0.0%	0.0%	0.0%	0.0%	0.0%	0.0%
Bantu South Africa	28.7%	70.0%	1.0%	0.1%	0.0%	0.0%	0.0%	0.0%	0.0%	0.0%	0.0%	0.0%	0.0%	0.0%	0.1%	0.0%	0.0%	0.0%	0.0%	0.0%	0.1%
Coloured Colesberg South Africa	52.2%	15.8%	0.8%	0.6%	1.1%	0.2%	1.1%	1.2%	4.5%	7.8%	2.2%	2.4%	1.1%	0.5%	4.8%	0.5%	1.4%	0.7%	0.4%	0.4%	0.3%
Coloured Wellington South Africa	25.6%	14.7%	1.5%	1.3%	1.6%	1.4%	1.6%	1.4%	2.5%	7.8%	3.6%	3.7%	0.9%	2.5%	17.9%	2.0%	5.2%	2.2%	0.8%	0.9%	0.9%
Gui and Gana San Botswana	89.6%	10.3%	0.0%	0.0%	0.0%	0.0%	0.0%	0.0%	0.0%	0.0%	0.0%	0.0%	0.0%	0.0%	0.0%	0.0%	0.0%	0.0%	0.0%	0.0%	0.1%
Hadza Tanzania	29.3%	15.6%	41.5%	11.2%	0.0%	0.1%	0.0%	0.0%	0.0%	0.0%	0.0%	0.0%	0.1%	0.1%	0.7%	0.2%	0.2%	0.1%	0.0%	0.3%	0.6%
Juoansi San Tsumkwe Namibia	98.6%	1.3%	0.1%	0.0%	0.0%	0.0%	0.0%	0.0%	0.0%	0.0%	0.0%	0.0%	0.0%	0.0%	0.0%	0.0%	0.0%	0.0%	0.0%	0.0%	0.0%
Karretjie San Colesberg South Africa	96.6%	3.0%	0.0%	0.0%	0.0%	0.0%	0.0%	0.0%	0.0%	0.0%	0.0%	0.0%	0.0%	0.0%	0.0%	0.0%	0.1%	0.0%	0.0%	0.1%	0.1%
Khomani San Askham South Africa	95.6%	2.6%	0.2%	0.6%	0.0%	0.0%	0.3%	0.3%	0.0%	0.1%	0.0%	0.0%	0.0%	0.0%	0.0%	0.0%	0.0%	0.1%	0.1%	0.0%	0.0%
Khomani San South Africa	92.2%	4.2%	0.1%	0.5%	0.1%	0.1%	0.3%	0.0%	0.1%	0.2%	0.4%	0.2%	0.2%	0.0%	1.0%	0.2%	0.1%	0.1%	0.1%	0.1%	0.0%
Khwe San Caprivi Southern Africa	50.7%	43.2%	3.0%	1.5%	0.7%	0.3%	0.1%	0.0%	0.1%	0.1%	0.0%	0.1%	0.0%	0.0%	0.0%	0.1%	0.1%	0.0%	0.0%	0.1%	0.1%
Kung Kalahari Desert	88.8%	10.4%	0.6%	0.0%	0.0%	0.0%	0.0%	0.0%	0.0%	0.0%	0.0%	0.0%	0.0%	0.0%	0.0%	0.0%	0.0%	0.0%	0.0%	0.0%	0.1%
Mbuti East-Central Africa	77.1%	12.7%	10.2%	0.0%	0.0%	0.0%	0.0%	0.0%	0.0%	0.0%	0.0%	0.0%	0.0%	0.0%	0.0%	0.0%	0.0%	0.0%	0.0%	0.0%	0.0%
Nama Khoe Windhoek Namibia	86.2%	6.1%	2.1%	2.5%	0.2%	0.0%	0.3%	0.4%	0.7%	0.3%	0.3%	0.0%	0.0%	0.0%	0.1%	0.2%	0.1%	0.0%	0.1%	0.1%	0.3%
Nguni South Africa	22.7%	74.1%	2.6%	0.4%	0.0%	0.0%	0.0%	0.0%	0.0%	0.0%	0.0%	0.0%	0.1%	0.0%	0.0%	0.0%	0.0%	0.0%	0.0%	0.0%	0.0%
Pedi South Africa	23.6%	73.6%	0.9%	0.0%	0.0%	0.5%	0.0%	0.0%	0.9%	0.3%	0.0%	0.0%	0.0%	0.0%	0.0%	0.0%	0.0%	0.1%	0.0%	0.0%	0.1%
San Namibia	99.9%	0.0%	0.0%	0.0%	0.0%	0.0%	0.0%	0.0%	0.0%	0.0%	0.0%	0.0%	0.0%	0.0%	0.0%	0.0%	0.0%	0.0%	0.0%	0.0%	0.0%
Sandawe Tanzania	20.2%	21.5%	26.3%	27.5%	1.4%	1.6%	0.0%	0.1%	0.0%	0.1%	0.0%	0.0%	0.1%	0.2%	0.2%	0.1%	0.2%	0.2%	0.1%	0.1%	0.2%
Sotho South Africa	33.1%	65.6%	1.2%	0.0%	0.0%	0.0%	0.0%	0.0%	0.0%	0.0%	0.0%	0.0%	0.0%	0.0%	0.0%	0.0%	0.1%	0.0%	0.0%	0.0%	0.0%
Tswana South Africa	39.5%	58.6%	0.0%	0.0%	0.0%	0.0%	0.0%	0.0%	0.0%	0.0%	0.8%	0.0%	0.0%	0.0%	0.9%	0.0%	0.0%	0.0%	0.1%	0.0%	0.0%
Xun San Menongue Angola	99.6%	0.2%	0.0%	0.1%	0.0%	0.0%	0.0%	0.0%	0.0%	0.0%	0.0%	0.0%	0.0%	0.0%	0.0%	0.0%	0.0%	0.0%	0.0%	0.0%	0.1%

21 World Regions Admixture: African Populations (Part 2)

Population	Khoisan-Aka	West African	Nilotic	Horn of Africa	North African	Arabian	Mesopotamian	East Mediterranean	Iberian-Italian	Northwest European	Slavic-Baltic	Uralic	Caucasus Mountains	Indus Valley	South India	Oceanian	Southeast Asian	East Asian	Tibetan	Siberian-Arctic	Mesoamerican
African Qatar	2.8%	35.2%	22.6%	10.4%	0.2%	11.0%	3.2%	1.7%	0.8%	0.2%	0.6%	0.1%	0.3%	5.4%	3.5%	0.5%	0.6%	0.2%	0.0%	0.3%	0.3%
African-American Southwest USA	1.4%	73.0%	0.9%	0.4%	1.0%	0.5%	0.2%	0.6%	2.7%	7.7%	3.8%	1.7%	0.7%	0.5%	0.5%	0.4%	0.2%	0.1%	0.4%	0.5%	2.9%
Bambara West Africa	0.1%	98.0%	0.8%	0.1%	0.2%	0.0%	0.1%	0.0%	0.0%	0.0%	0.0%	0.0%	0.0%	0.0%	0.0%	0.1%	0.0%	0.1%	0.1%	0.0%	0.2%
Bamoun Cameroon	3.5%	94.1%	2.0%	0.0%	0.0%	0.0%	0.0%	0.0%	0.0%	0.0%	0.0%	0.0%	0.0%	0.0%	0.0%	0.1%	0.0%	0.1%	0.0%	0.0%	0.1%
Bantu Kenya	5.0%	66.2%	25.0%	2.4%	0.0%	0.0%	0.4%	0.0%	0.0%	0.0%	0.0%	0.0%	0.2%	0.0%	0.1%	0.4%	0.0%	0.0%	0.1%	0.1%	0.1%
Brong	0.6%	98.4%	0.0%	0.0%	0.5%	0.0%	0.2%	0.0%	0.0%	0.0%	0.1%	0.0%	0.0%	0.0%	0.1%	0.1%	0.0%	0.0%	0.0%	0.0%	0.1%
Dogon West Africa	0.0%	97.8%	0.4%	0.0%	0.9%	0.0%	0.0%	0.0%	0.0%	0.1%	0.1%	0.0%	0.0%	0.0%	0.0%	0.1%	0.1%	0.1%	0.1%	0.0%	0.3%
Dominican Republic	1.0%	36.3%	1.9%	1.5%	5.8%	0.4%	1.2%	4.3%	23.2%	11.5%	1.7%	1.6%	1.4%	0.3%	0.1%	0.4%	0.1%	0.1%	0.0%	0.1%	7.1%
Fang Cameroon	8.1%	90.6%	0.9%	0.0%	0.0%	0.1%	0.0%	0.0%	0.0%	0.0%	0.0%	0.0%	0.0%	0.0%	0.0%	0.1%	0.0%	0.1%	0.0%	0.0%	0.0%
Fulani Nigeria	0.0%	58.4%	1.8%	5.4%	32.0%	0.3%	0.0%	0.0%	0.9%	0.0%	0.3%	0.4%	0.1%	0.0%	0.0%	0.0%	0.2%	0.0%	0.0%	0.1%	0.1%
Hausa Nigeria	0.0%	95.8%	2.8%	0.0%	1.0%	0.0%	0.0%	0.0%	0.0%	0.0%	0.0%	0.0%	0.0%	0.0%	0.2%	0.1%	0.0%	0.1%	0.0%	0.0%	0.0%
Herero Namibia	13.7%	83.8%	1.7%	0.3%	0.1%	0.0%	0.0%	0.0%	0.0%	0.0%	0.0%	0.0%	0.0%	0.0%	0.0%	0.2%	0.0%	0.0%	0.0%	0.0%	0.2%
Igbo Nigeria	0.8%	97.2%	0.6%	0.2%	0.2%	0.1%	0.0%	0.0%	0.0%	0.1%	0.2%	0.1%	0.0%	0.1%	0.0%	0.1%	0.0%	0.1%	0.1%	0.0%	0.0%
Kaba Chad	0.4%	85.7%	13.3%	0.1%	0.0%	0.0%	0.0%	0.1%	0.0%	0.0%	0.0%	0.0%	0.0%	0.0%	0.0%	0.1%	0.0%	0.2%	0.0%	0.0%	0.0%
Kongo	3.5%	94.2%	2.3%	0.0%	0.0%	0.0%	0.0%	0.0%	0.0%	0.0%	0.0%	0.0%	0.0%	0.0%	0.0%	0.0%	0.0%	0.0%	0.0%	0.0%	0.0%
Luhya Kenya	4.2%	69.4%	24.3%	1.1%	0.0%	0.1%	0.0%	0.0%	0.0%	0.0%	0.1%	0.1%	0.0%	0.0%	0.1%	0.2%	0.1%	0.1%	0.0%	0.0%	0.1%
Mandenka Senegal	0.1%	97.0%	0.4%	0.1%	1.7%	0.2%	0.0%	0.0%	0.0%	0.0%	0.0%	0.0%	0.0%	0.0%	0.1%	0.2%	0.1%	0.0%	0.0%	0.0%	0.1%
Yoruba Nigeria	0.2%	98.9%	0.4%	0.0%	0.0%	0.0%	0.0%	0.0%	0.0%	0.0%	0.0%	0.0%	0.0%	0.0%	0.0%	0.1%	0.0%	0.1%	0.0%	0.0%	0.1%

21 World Regions Admixture: African Populations (Part 3)

Population	Khoisan-Aka	West African	Nilotic	Horn of Africa	North African	Arabian	Mesopotamian	East Mediterranean	Iberian-Italian	Northwest European	Slavic-Baltic	Uralic	Caucasus Mountains	Indus Valley	South India	Oceanian	Southeast Asian	East Asian	Tibetan	Siberian-Arctic	Mesoamerican	
Afar Ethiopia	0.3%	0.4%	7.3%	78.0%	2.0%	7.5%	0.6%	1.6%	0.0%	0.1%	0.5%	0.2%	0.0%	0.0%	0.5%	0.2%	0.2%	0.0%	0.1%	0.3%	0.1%	
Alur East-Central Africa	9.7%	36.5%	53.7%	0.0%	0.0%	0.0%	0.0%	0.0%	0.0%	0.0%	0.0%	0.0%	0.0%	0.0%	0.0%	0.0%	0.0%	0.0%	0.0%	0.0%	0.0%	0.0%
Amhara Ethiopia	1.0%	0.4%	5.7%	72.7%	3.6%	12.8%	0.5%	1.0%	0.4%	0.1%	0.4%	0.2%	0.0%	0.0%	0.3%	0.2%	0.1%	0.1%	0.2%	0.3%	0.0%	
Anuak Ethiopia	0.4%	4.0%	95.6%	0.0%	0.0%	0.0%	0.0%	0.0%	0.0%	0.0%	0.0%	0.0%	0.0%	0.0%	0.0%	0.0%	0.0%	0.0%	0.0%	0.0%	0.0%	0.0%
Ari Blacksmith Ethiopia	14.0%	0.0%	41.9%	43.3%	0.0%	0.0%	0.0%	0.0%	0.0%	0.0%	0.0%	0.0%	0.0%	0.0%	0.0%	0.3%	0.2%	0.1%	0.0%	0.0%	0.0%	
Ari Cultivator Ethiopia	13.9%	0.0%	37.4%	48.0%	0.0%	0.0%	0.0%	0.0%	0.0%	0.0%	0.0%	0.0%	0.0%	0.0%	0.0%	0.2%	0.1%	0.3%	0.1%	0.0%	0.0%	
Bulala Chad	0.0%	31.0%	67.9%	1.0%	0.0%	0.0%	0.0%	0.0%	0.0%	0.0%	0.0%	0.0%	0.0%	0.0%	0.0%	0.0%	0.0%	0.0%	0.0%	0.0%	0.0%	0.1%
Gumuz Ethiopia	0.9%	0.0%	97.5%	1.1%	0.0%	0.0%	0.0%	0.0%	0.0%	0.0%	0.0%	0.0%	0.0%	0.0%	0.0%	0.3%	0.1%	0.1%	0.0%	0.0%	0.0%	0.1%
Hema East-Central Africa	5.6%	42.5%	30.4%	16.4%	1.6%	1.9%	0.4%	0.1%	0.0%	0.3%	0.0%	0.0%	0.0%	0.1%	0.0%	0.1%	0.0%	0.0%	0.0%	0.2%	0.3%	
Jewish Ethiopia	0.7%	1.4%	10.7%	68.2%	4.5%	11.2%	0.0%	2.3%	0.1%	0.0%	0.3%	0.0%	0.0%	0.0%	0.3%	0.1%	0.0%	0.0%	0.0%	0.1%	0.1%	
Maasai Kenya	3.7%	13.5%	48.8%	30.6%	1.0%	0.5%	0.1%	0.2%	0.1%	0.1%	0.1%	0.1%	0.0%	0.0%	0.4%	0.2%	0.1%	0.1%	0.1%	0.1%	0.2%	
Mada Cameroon	0.0%	63.6%	36.2%	0.0%	0.0%	0.0%	0.0%	0.0%	0.0%	0.0%	0.0%	0.0%	0.0%	0.0%	0.0%	0.1%	0.0%	0.0%	0.0%	0.0%	0.0%	0.1%
Oromo Ethiopia	2.2%	0.4%	17.9%	69.5%	2.1%	6.1%	0.2%	0.3%	0.0%	0.1%	0.2%	0.1%	0.1%	0.1%	0.1%	0.1%	0.1%	0.2%	0.1%	0.0%	0.1%	
Somali Ethiopia	0.6%	0.8%	16.9%	78.1%	1.3%	0.2%	0.1%	0.1%	0.0%	0.6%	0.0%	0.0%	0.1%	0.0%	0.0%	0.4%	0.1%	0.1%	0.1%	0.0%	0.4%	
Somalia	0.5%	0.6%	14.3%	82.8%	0.4%	0.2%	0.0%	0.0%	0.1%	0.0%	0.0%	0.1%	0.1%	0.0%	0.3%	0.1%	0.0%	0.0%	0.0%	0.0%	0.2%	
South Sudanese	0.5%	7.8%	91.6%	0.1%	0.0%	0.0%	0.0%	0.0%	0.0%	0.0%	0.0%	0.0%	0.0%	0.0%	0.0%	0.0%	0.0%	0.0%	0.0%	0.0%	0.0%	
Tigray Ethiopia	0.5%	0.4%	5.0%	71.9%	4.0%	15.1%	0.6%	1.1%	0.0%	0.1%	0.1%	0.1%	0.2%	0.0%	0.2%	0.1%	0.0%	0.1%	0.1%	0.1%	0.2%	
Wolayta Ethiopia	7.4%	0.1%	18.3%	69.5%	0.0%	2.5%	0.0%	0.0%	0.0%	0.0%	0.0%	0.0%	0.0%	0.0%	0.1%	0.4%	0.3%	0.6%	0.0%	0.1%	0.6%	

21 World Regions Admixture: African Populations (Part 4)

Population	Khoisan-Aka	West African	Nilotic	Horn of Africa	North African	Arabian	Mesopotamian	East Mediterranean	Iberian-Italian	Northwest European	Slavic-Baltic	Uralic	Caucasus Mountains	Indus Valley	South India	Oceanian	Southeast Asian	East Asian	Tibetan	Siberian-Arctic	Mesoamerican
Algeria	0.5%	5.8%	1.2%	4.1%	57.2%	11.3%	0.5%	5.2%	9.7%	1.9%	0.6%	0.4%	0.4%	0.0%	0.1%	0.3%	0.2%	0.1%	0.0%	0.3%	0.1%
Canary Islands	0.5%	0.3%	0.1%	0.3%	15.7%	2.7%	1.1%	6.1%	48.0%	20.0%	2.1%	1.6%	0.3%	0.1%	0.4%	0.1%	0.0%	0.1%	0.0%	0.0%	0.5%
Egypt 1	0.3%	1.3%	1.6%	14.9%	13.6%	42.9%	9.2%	13.3%	1.3%	0.4%	0.3%	0.0%	0.0%	0.4%	0.0%	0.3%	0.3%	0.0%	0.0%	0.0%	0.0%
Egypt 2	0.1%	1.4%	1.2%	10.5%	17.0%	39.0%	9.6%	15.6%	2.1%	0.6%	0.7%	0.0%	1.3%	0.0%	0.6%	0.1%	0.0%	0.0%	0.1%	0.1%	0.2%
Jewish Morocco	0.0%	0.0%	0.0%	0.1%	10.0%	14.8%	8.8%	37.5%	23.0%	1.2%	2.7%	0.2%	0.9%	0.3%	0.1%	0.2%	0.1%	0.0%	0.0%	0.0%	0.0%
Libya	0.2%	2.5%	2.0%	6.8%	39.1%	33.9%	3.0%	5.7%	3.6%	1.1%	0.8%	0.4%	0.1%	0.0%	0.1%	0.0%	0.0%	0.0%	0.2%	0.3%	0.1%
Morocco	0.1%	9.7%	0.4%	4.7%	66.5%	8.3%	1.6%	2.8%	4.7%	0.0%	0.0%	0.0%	0.0%	0.0%	0.4%	0.3%	0.0%	0.0%	0.0%	0.1%	0.1%
Mozabite Algeria-Mzab	0.2%	5.7%	1.3%	1.4%	83.8%	1.3%	0.3%	0.8%	2.5%	0.7%	0.7%	0.3%	0.1%	0.1%	0.1%	0.1%	0.1%	0.1%	0.2%	0.1%	0.3%
North Morocco	0.4%	0.8%	0.6%	3.4%	66.0%	7.8%	0.0%	3.9%	12.9%	2.3%	0.0%	0.7%	0.5%	0.0%	0.2%	0.3%	0.0%	0.1%	0.1%	0.1%	0.0%
Saharawi	0.1%	5.9%	0.4%	4.9%	79.9%	7.4%	0.0%	0.9%	0.1%	0.0%	0.0%	0.1%	0.0%	0.0%	0.1%	0.1%	0.0%	0.0%	0.0%	0.0%	0.1%
South Morocco	0.4%	22.5%	0.9%	3.2%	65.8%	1.0%	0.0%	2.4%	2.3%	0.1%	0.1%	0.3%	0.1%	0.0%	0.0%	0.2%	0.2%	0.0%	0.0%	0.3%	0.2%
Tunisia	0.1%	0.0%	0.0%	0.9%	89.5%	1.9%	0.6%	2.3%	2.8%	0.6%	0.7%	0.0%	0.0%	0.0%	0.3%	0.0%	0.1%	0.0%	0.0%	0.0%	0.2%



21 World Regions Admixture: Middle Eastern Populations (Part 1)

Population	Khoisan-Aka	West African	Nilotic	Horn of Africa	North African	Arabian	Mesopotamian	East Mediterranean	Iberian-Italian	Northwest European	Slavic-Baltic	Uralic	Caucasus Mountains	Indus Valley	South India	Oceanian	Southeast Asian	East Asian	Tibetan	Siberian-Arctic	Mesoamerican
Arab Qatar	0.3%	1.1%	0.4%	3.6%	1.5%	74.4%	8.5%	5.2%	0.7%	0.2%	0.1%	0.2%	1.0%	1.3%	0.9%	0.2%	0.2%	0.0%	0.1%	0.0%	0.2%
Armenian	0.0%	0.0%	0.0%	0.0%	0.3%	9.6%	34.3%	13.5%	6.0%	1.2%	3.4%	0.9%	29.8%	0.7%	0.1%	0.0%	0.0%	0.0%	0.0%	0.1%	0.1%
Ashkenazi Jewish Europe	0.1%	0.0%	0.0%	0.1%	1.9%	8.0%	8.8%	38.3%	22.5%	5.8%	6.2%	0.7%	5.6%	1.0%	0.1%	0.4%	0.1%	0.1%	0.0%	0.1%	0.2%
Assyrian	0.0%	0.0%	0.0%	0.3%	0.2%	13.4%	47.1%	15.9%	4.0%	0.0%	0.0%	0.0%	19.2%	0.0%	0.0%	0.0%	0.0%	0.0%	0.0%	0.0%	0.0%
Bedouin Negev Desert Israel	0.2%	0.6%	1.6%	3.9%	5.1%	66.3%	9.7%	7.6%	2.7%	0.2%	0.1%	0.1%	1.4%	0.3%	0.1%	0.1%	0.0%	0.0%	0.0%	0.0%	0.1%
Cyprus	0.1%	0.1%	0.0%	0.2%	1.2%	17.1%	17.6%	31.8%	17.4%	0.9%	0.9%	0.2%	12.3%	0.0%	0.0%	0.0%	0.1%	0.1%	0.0%	0.0%	0.0%
Druze Israel-Carmel	0.0%	0.0%	0.0%	0.1%	1.4%	27.8%	30.2%	18.9%	11.3%	0.4%	0.2%	0.1%	8.6%	0.7%	0.0%	0.1%	0.1%	0.0%	0.0%	0.1%	0.0%
Iran	0.2%	0.7%	0.2%	0.5%	0.3%	16.2%	34.2%	6.0%	1.4%	0.9%	0.1%	0.0%	17.6%	19.5%	1.0%	0.4%	0.1%	0.0%	0.3%	0.1%	0.0%
Jewish Azerbaijan	0.0%	0.0%	0.0%	0.0%	0.1%	19.0%	35.2%	16.1%	1.9%	1.3%	0.3%	0.0%	24.6%	1.5%	0.0%	0.0%	0.0%	0.0%	0.0%	0.0%	0.0%
Jewish Georgia	0.0%	0.0%	0.0%	0.0%	1.8%	31.0%	22.8%	13.1%	3.7%	2.2%	0.0%	0.3%	24.7%	0.1%	0.3%	0.0%	0.0%	0.0%	0.0%	0.0%	0.0%
Jewish Iran	0.0%	0.0%	0.0%	0.0%	0.0%	27.8%	45.7%	10.4%	0.0%	0.0%	0.0%	0.0%	11.9%	3.5%	0.0%	0.3%	0.0%	0.2%	0.0%	0.0%	0.2%
Jewish Iraq	0.0%	0.0%	0.0%	0.0%	0.1%	25.7%	43.7%	15.9%	3.3%	0.0%	0.0%	0.0%	8.8%	2.3%	0.2%	0.1%	0.0%	0.0%	0.0%	0.0%	0.0%
Jewish Yemen	0.0%	0.0%	0.0%	0.5%	0.8%	80.8%	6.9%	9.2%	1.6%	0.0%	0.0%	0.0%	0.0%	0.0%	0.0%	0.0%	0.0%	0.0%	0.0%	0.0%	0.0%
Jordan	0.3%	0.8%	1.9%	2.6%	5.5%	38.4%	23.3%	13.1%	5.0%	0.0%	0.1%	0.3%	5.9%	1.7%	0.0%	0.1%	0.3%	0.0%	0.1%	0.2%	0.0%
Kurdish	0.0%	0.0%	0.0%	0.0%	0.3%	11.9%	43.1%	7.2%	2.1%	1.7%	0.6%	0.2%	17.5%	15.4%	0.0%	0.0%	0.0%	0.0%	0.0%	0.0%	0.0%
Lebanon	0.1%	0.0%	0.2%	4.2%	1.2%	27.6%	24.5%	21.5%	6.6%	1.8%	2.1%	0.1%	6.0%	2.3%	0.8%	0.6%	0.0%	0.0%	0.0%	0.0%	0.3%
Palestinian Israel	0.4%	0.1%	0.2%	2.2%	3.9%	53.0%	17.7%	10.4%	6.1%	0.5%	0.5%	0.0%	3.8%	0.4%	0.2%	0.1%	0.0%	0.0%	0.2%	0.2%	0.2%
Persian Qatar	0.4%	2.8%	0.7%	1.7%	1.2%	16.9%	26.4%	5.8%	0.7%	0.0%	0.3%	0.3%	10.8%	30.1%	1.5%	0.1%	0.0%	0.0%	0.0%	0.0%	0.3%
Saudi Arabia	0.2%	0.8%	1.0%	0.5%	1.2%	74.8%	11.2%	5.3%	0.3%	0.0%	0.1%	0.0%	1.9%	1.2%	0.9%	0.2%	0.1%	0.2%	0.0%	0.0%	0.0%
Sephardic Jewish Bulgaria	0.0%	0.0%	0.0%	0.5%	2.4%	16.9%	10.8%	29.7%	29.0%	3.6%	1.9%	1.6%	3.3%	0.2%	0.0%	0.0%	0.0%	0.0%	0.1%	0.1%	0.0%
Sephardic Jewish Turkey	0.0%	0.1%	0.0%	0.1%	4.5%	22.4%	11.3%	27.0%	24.5%	1.5%	0.6%	0.0%	6.9%	0.6%	0.2%	0.3%	0.0%	0.0%	0.0%	0.0%	0.0%
Syria	0.1%	0.3%	0.0%	1.8%	2.3%	34.5%	22.3%	15.4%	5.3%	2.8%	0.3%	0.2%	9.4%	4.5%	0.1%	0.1%	0.1%	0.1%	0.0%	0.1%	0.1%
Turkey	0.1%	0.0%	0.0%	0.2%	0.6%	8.8%	29.6%	10.9%	9.1%	1.8%	3.0%	0.6%	24.4%	5.0%	0.6%	0.3%	0.4%	0.2%	0.8%	3.0%	0.4%
Yemen	1.7%	8.3%	2.3%	7.1%	3.5%	57.4%	9.7%	2.6%	0.1%	0.0%	0.3%	0.8%	0.9%	1.7%	1.7%	0.3%	0.4%	0.0%	0.2%	0.2%	0.8%

21 World Regions Admixture: Middle Eastern Populations (Part 2)

Population	Khoisan-Aka	West African	Nilotic	Horn of Africa	North African	Arabian	Mesopotamian	East Mediterranean	Iberian-Italian	Northwest European	Slavic-Baltic	Uralic	Caucasus Mountains	Indus Valley	South India	Oceanian	Southeast Asian	East Asian	Tibetan	Siberian-Arctic	Mesoamerican
Abkhazian	0.1%	0.1%	0.0%	0.1%	0.6%	2.3%	19.2%	4.8%	1.0%	0.8%	1.9%	0.0%	67.0%	1.3%	0.4%	0.1%	0.0%	0.1%	0.0%	0.0%	0.2%
Adyghe North Caucasus	0.1%	0.1%	0.1%	0.1%	0.1%	1.2%	14.3%	3.4%	3.2%	3.8%	6.4%	1.7%	57.5%	5.1%	0.3%	0.2%	0.1%	0.2%	0.5%	1.1%	0.4%
Balkar	0.0%	0.0%	0.0%	0.2%	0.0%	0.5%	10.6%	3.9%	1.6%	6.3%	5.0%	2.5%	61.1%	3.7%	0.4%	0.4%	0.6%	0.8%	0.4%	1.5%	0.7%
Chechen	0.1%	0.1%	0.0%	0.1%	0.1%	0.7%	9.2%	1.9%	1.1%	7.8%	5.4%	2.4%	62.4%	7.8%	0.1%	0.2%	0.0%	0.0%	0.0%	0.1%	0.4%
Dargin Urkara Dagestan	0.1%	0.1%	0.0%	0.0%	0.0%	0.2%	11.0%	0.4%	0.0%	10.0%	3.8%	5.6%	53.3%	14.8%	0.2%	0.1%	0.0%	0.0%	0.0%	0.1%	0.5%
Georgia Caucasus	0.2%	0.0%	0.0%	0.1%	0.3%	3.5%	20.7%	6.0%	2.3%	0.9%	1.6%	1.0%	63.0%	0.3%	0.0%	0.0%	0.1%	0.0%	0.0%	0.1%	0.0%
Kumyk	0.1%	0.1%	0.2%	0.0%	0.1%	2.4%	13.5%	3.0%	2.4%	6.7%	4.2%	2.6%	49.1%	10.6%	0.3%	0.2%	0.8%	0.4%	0.2%	2.4%	0.9%
Lezgin Caucasus	0.1%	0.0%	0.1%	0.0%	0.0%	0.3%	16.0%	1.3%	0.1%	5.6%	7.8%	3.1%	51.6%	13.8%	0.0%	0.0%	0.0%	0.0%	0.0%	0.0%	0.2%
Nogay	0.0%	0.1%	0.0%	0.3%	0.2%	1.3%	9.7%	1.9%	5.5%	4.1%	7.2%	3.8%	35.8%	5.6%	0.5%	0.4%	0.1%	2.7%	1.7%	18.6%	0.6%
North Ossetia	0.1%	0.0%	0.1%	0.3%	0.1%	0.5%	9.8%	4.8%	2.6%	1.6%	1.4%	1.6%	67.2%	4.6%	0.5%	0.2%	0.5%	1.1%	0.1%	2.8%	0.3%
Tajik	0.1%	0.2%	0.2%	0.0%	0.0%	0.2%	11.6%	1.0%	1.3%	6.1%	4.8%	4.5%	13.6%	41.5%	1.7%	0.5%	1.1%	0.8%	1.4%	8.0%	1.5%
Turkmen	0.2%	0.4%	0.0%	0.6%	0.9%	0.8%	21.8%	2.5%	2.3%	2.2%	2.2%	1.7%	12.3%	35.0%	0.6%	0.5%	0.7%	1.9%	2.6%	9.8%	1.0%

21 World Regions Admixture: European Populations (Part 1)

Population	Khoisan-Aka	West African	Nilotic	Horn of Africa	North African	Arabian	Mesopotamian	East Mediterranean	Iberian-Italian	Northwest European	Slavic-Baltic	Uralic	Caucasus Mountains	Indus Valley	South India	Oceanian	Southeast Asian	East Asian	Tibetan	Siberian-Arctic	Mesoamerican
Andalusia Spain	0.1%	0.2%	0.0%	0.3%	4.0%	1.9%	2.5%	5.0%	61.0%	18.5%	4.2%	0.9%	0.2%	0.0%	0.2%	0.6%	0.2%	0.0%	0.0%	0.0%	0.2%
Basque France	0.0%	0.0%	0.0%	0.0%	0.0%	0.0%	0.0%	0.1%	88.0%	8.7%	1.6%	1.2%	0.0%	0.0%	0.0%	0.2%	0.1%	0.0%	0.0%	0.0%	0.1%
Basque Spain	0.0%	0.0%	0.1%	0.0%	0.1%	0.0%	0.0%	0.0%	85.5%	11.1%	1.8%	0.6%	0.0%	0.0%	0.0%	0.1%	0.2%	0.0%	0.0%	0.0%	0.3%
Bergamo Italy	0.0%	0.0%	0.1%	0.0%	0.7%	2.7%	4.2%	9.1%	52.0%	20.0%	5.5%	1.0%	3.6%	0.9%	0.0%	0.1%	0.0%	0.0%	0.0%	0.0%	0.1%
Galicia Spain	0.1%	0.0%	0.0%	0.2%	6.8%	1.0%	0.9%	3.2%	54.3%	23.8%	6.4%	2.1%	0.2%	0.1%	0.2%	0.2%	0.0%	0.1%	0.1%	0.0%	0.2%
Greek Mixed	0.0%	0.0%	0.0%	0.0%	4.5%	1.1%	14.7%	10.2%	42.4%	3.5%	10.3%	2.8%	10.5%	0.0%	0.0%	0.0%	0.0%	0.0%	0.0%	0.0%	0.0%
Italy General	0.0%	0.0%	0.0%	0.3%	0.3%	9.0%	12.2%	10.2%	40.3%	9.7%	7.9%	2.2%	7.4%	0.0%	0.3%	0.2%	0.0%	0.0%	0.0%	0.0%	0.0%
Portugal	0.2%	0.0%	0.2%	2.2%	6.2%	2.6%	0.1%	2.5%	50.4%	23.0%	9.1%	1.0%	1.9%	0.0%	0.0%	0.4%	0.1%	0.0%	0.0%	0.2%	0.0%
Sardinia	0.0%	0.0%	0.0%	0.0%	3.9%	1.2%	0.1%	8.9%	85.9%	0.0%	0.0%	0.0%	0.0%	0.0%	0.0%	0.0%	0.0%	0.0%	0.0%	0.0%	0.0%
Southern Italy and Sicily	0.1%	0.0%	0.0%	0.1%	2.8%	10.4%	15.7%	17.6%	38.7%	4.0%	1.6%	0.1%	8.4%	0.0%	0.2%	0.0%	0.1%	0.0%	0.0%	0.0%	0.0%
Spain	0.2%	0.1%	0.0%	0.1%	3.8%	1.2%	1.3%	4.3%	61.5%	19.0%	5.5%	1.3%	0.8%	0.1%	0.1%	0.2%	0.1%	0.2%	0.0%	0.1%	0.2%
Tuscany Italy	0.0%	0.0%	0.0%	0.0%	1.0%	4.8%	9.1%	12.9%	47.2%	13.4%	5.7%	0.8%	4.7%	0.1%	0.0%	0.1%	0.1%	0.0%	0.0%	0.0%	0.1%

21 World Regions Admixture: European Populations (Part 2)

Population	Khoisan-Aka	West African	Nilotic	Horn of Africa	North African	Arabian	Mesopotamian	East Mediterranean	Iberian-Italian	Northwest European	Slavic-Baltic	Uralic	Caucasus Mountains	Indus Valley	South India	Oceanian	Southeast Asian	East Asian	Tibetan	Siberian-Arctic	Mesoamerican
Argyll and Bute Scottish Highlands	0.2%	0.0%	0.0%	0.0%	0.0%	0.0%	0.8%	0.0%	20.7%	50.2%	14.7%	8.1%	2.4%	1.5%	0.0%	0.0%	0.0%	0.0%	0.0%	0.1%	1.5%
Cornwall West Britain	0.0%	0.1%	0.0%	0.1%	0.1%	0.1%	0.2%	0.4%	23.9%	52.9%	14.4%	4.9%	1.4%	0.4%	0.4%	0.1%	0.1%	0.0%	0.0%	0.1%	0.3%
England	0.1%	0.1%	0.0%	0.0%	0.1%	0.0%	0.4%	1.0%	22.3%	51.9%	14.8%	6.6%	1.5%	0.5%	0.2%	0.1%	0.0%	0.1%	0.0%	0.1%	0.3%
European-American Utah	0.1%	0.1%	0.1%	0.0%	0.4%	0.1%	0.6%	1.0%	21.4%	49.5%	17.6%	6.2%	1.9%	0.3%	0.1%	0.1%	0.0%	0.0%	0.1%	0.1%	0.3%
France	0.0%	0.0%	0.1%	0.0%	0.7%	0.5%	2.0%	2.9%	38.4%	38.4%	11.3%	3.6%	1.3%	0.2%	0.1%	0.0%	0.0%	0.0%	0.0%	0.1%	0.2%
Germany	0.2%	0.0%	0.0%	0.0%	0.0%	0.0%	1.3%	1.9%	22.1%	39.0%	25.3%	9.2%	0.5%	0.3%	0.0%	0.1%	0.0%	0.0%	0.0%	0.0%	0.0%
Ireland	0.1%	0.0%	0.0%	0.3%	0.0%	0.0%	0.0%	0.5%	14.8%	60.2%	16.4%	4.4%	2.1%	0.0%	0.2%	0.2%	0.0%	0.0%	0.0%	0.0%	0.8%
Netherlands	0.1%	0.0%	0.0%	0.4%	0.0%	0.5%	0.0%	0.5%	18.3%	50.0%	17.6%	9.0%	2.6%	0.5%	0.0%	0.3%	0.0%	0.1%	0.0%	0.0%	0.1%
Norway	0.1%	0.0%	0.0%	0.0%	0.6%	0.0%	0.0%	0.1%	5.5%	60.4%	16.5%	15.5%	0.0%	0.0%	0.0%	0.7%	0.0%	0.0%	0.0%	0.0%	0.4%
Orkney Islands Scotland	0.1%	0.1%	0.0%	0.0%	0.3%	0.2%	0.0%	1.0%	13.9%	58.7%	14.6%	7.3%	2.3%	0.7%	0.4%	0.1%	0.0%	0.0%	0.0%	0.1%	0.3%
Sweden	0.1%	0.0%	0.0%	0.2%	0.0%	0.2%	0.3%	0.0%	12.4%	46.9%	22.2%	14.2%	1.6%	1.2%	0.0%	0.0%	0.0%	0.0%	0.1%	0.1%	0.5%

21 World Regions Admixture: European Populations (Part 3)

Population	Khoisan-Aka	West African	Nilotic	Horn of Africa	North African	Arabian	Mesopotamian	East Mediterranean	Iberian-Italian	Northwest European	Slavic-Baltic	Uralic	Caucasus Mountains	Indus Valley	South India	Oceanian	Southeast Asian	East Asian	Tibetan	Siberian-Arctic	Mesoamerican
Belarus	0.0%	0.0%	0.1%	0.0%	0.0%	0.0%	0.5%	1.7%	4.6%	17.2%	58.1%	15.6%	1.4%	0.3%	0.2%	0.0%	0.1%	0.0%	0.0%	0.0%	0.1%
Bulgaria	0.1%	0.0%	0.0%	0.0%	0.7%	3.0%	5.5%	8.2%	30.5%	14.5%	24.7%	4.1%	8.0%	0.0%	0.2%	0.0%	0.1%	0.1%	0.0%	0.2%	0.1%
Chuvash Russian Federation	0.0%	0.2%	0.2%	0.2%	0.0%	0.1%	0.8%	0.4%	1.2%	9.5%	24.0%	34.9%	3.2%	1.2%	0.6%	0.3%	0.0%	0.0%	0.1%	21.4%	1.6%
Finland	0.0%	0.1%	0.0%	0.0%	0.1%	0.1%	0.2%	0.1%	1.2%	24.7%	25.0%	45.4%	0.2%	0.1%	0.1%	0.2%	0.3%	0.1%	0.1%	1.1%	0.7%
Hungary	0.1%	0.0%	0.0%	0.1%	0.1%	0.1%	2.8%	4.0%	19.6%	24.7%	36.7%	7.2%	2.9%	0.7%	0.2%	0.2%	0.1%	0.0%	0.0%	0.1%	0.4%
Lithuania	0.1%	0.1%	0.0%	0.0%	0.0%	0.0%	0.0%	0.0%	1.2%	15.1%	62.1%	19.9%	1.0%	0.0%	0.0%	0.1%	0.0%	0.0%	0.1%	0.1%	0.1%
Mordvin	0.0%	0.1%	0.1%	0.2%	0.0%	0.0%	0.6%	0.0%	2.0%	13.0%	50.2%	22.3%	3.4%	1.9%	0.5%	0.2%	0.4%	0.1%	0.2%	3.6%	1.1%
Poland	0.1%	0.1%	0.0%	0.2%	0.0%	0.0%	1.0%	1.9%	12.7%	16.4%	51.1%	14.6%	1.3%	0.1%	0.2%	0.0%	0.1%	0.0%	0.0%	0.0%	0.3%
Romania	0.1%	0.0%	0.0%	0.0%	0.7%	2.7%	5.5%	8.6%	33.2%	9.7%	21.5%	6.5%	9.7%	0.8%	0.0%	0.3%	0.1%	0.0%	0.0%	0.1%	0.3%
Russia General	0.2%	0.0%	0.0%	0.1%	0.0%	0.3%	0.8%	1.6%	2.1%	18.2%	51.8%	18.7%	4.2%	0.3%	0.2%	0.2%	0.0%	0.0%	0.2%	0.5%	0.7%
Serbia and Croatia	0.0%	0.2%	0.0%	0.8%	0.0%	0.0%	3.5%	7.2%	33.4%	9.2%	32.5%	8.8%	4.3%	0.0%	0.0%	0.0%	0.0%	0.0%	0.0%	0.0%	0.0%
Slovenia	0.2%	0.0%	0.0%	0.0%	0.0%	0.4%	1.6%	3.7%	18.2%	22.4%	43.5%	6.2%	1.9%	0.9%	0.3%	0.2%	0.1%	0.0%	0.0%	0.1%	0.1%
Ukraine	0.0%	0.0%	0.0%	0.0%	0.9%	0.0%	2.2%	1.3%	9.4%	16.4%	51.6%	14.9%	1.7%	0.3%	0.4%	0.2%	0.0%	0.1%	0.0%	0.1%	0.2%
Vologda Northern Russia	0.3%	0.2%	0.1%	0.0%	0.0%	0.1%	0.1%	0.8%	0.3%	14.5%	44.1%	32.0%	1.3%	0.6%	0.5%	0.5%	0.3%	0.3%	0.1%	2.5%	1.3%

21 World Regions Admixture: South Asian Populations (Part 1)

Population	Khoisan-Aka	West African	Nilotic	Horn of Africa	North African	Arabian	Mesopotamian	East Mediterranean	Iberian-Italian	Northwest European	Slavic-Baltic	Uralic	Caucasus Mountains	Indus Valley	South India	Oceanian	Southeast Asian	East Asian	Tibetan	Siberian-Arctic	Mesoamerican
Arain Punjab Pakistan	0.2%	0.0%	0.0%	0.0%	0.1%	0.3%	2.3%	0.2%	0.0%	1.1%	1.0%	0.6%	5.0%	55.9%	32.9%	0.1%	0.0%	0.0%	0.0%	0.0%	0.3%
Balochi Pakistan	0.1%	1.1%	0.4%	0.1%	0.3%	1.2%	16.0%	1.0%	0.0%	0.7%	0.0%	0.0%	3.3%	69.3%	6.4%	0.1%	0.0%	0.0%	0.0%	0.0%	0.0%
Bene Israel India	0.0%	0.0%	0.0%	0.8%	0.2%	5.6%	9.9%	7.9%	1.1%	0.0%	0.0%	0.1%	2.3%	27.2%	43.2%	1.5%	0.0%	0.0%	0.0%	0.0%	0.1%
Brahmin Andhra Pradesh India	0.1%	0.0%	0.1%	0.0%	0.0%	0.1%	1.8%	0.7%	0.2%	0.6%	1.0%	0.6%	1.4%	22.2%	70.3%	0.1%	0.0%	0.0%	0.0%	0.0%	0.8%
Brahmin Tamil Nadu India	0.2%	0.1%	0.1%	0.0%	0.1%	0.3%	0.2%	0.1%	0.4%	0.6%	0.6%	0.6%	2.6%	28.7%	65.0%	0.2%	0.2%	0.0%	0.0%	0.0%	0.1%
Brahmin Uttar Pradesh India	0.0%	0.0%	0.0%	0.0%	0.0%	0.0%	1.7%	0.2%	0.0%	3.2%	3.5%	0.3%	3.5%	28.6%	58.6%	0.1%	0.1%	0.0%	0.0%	0.0%	0.3%
Brahui Pakistan	0.5%	1.1%	0.2%	0.7%	0.0%	2.2%	13.8%	0.4%	0.1%	0.0%	0.0%	0.1%	3.2%	75.5%	2.1%	0.0%	0.0%	0.0%	0.0%	0.0%	0.1%
Burusho Pakistan	0.1%	0.0%	0.0%	0.2%	0.0%	0.0%	1.2%	0.3%	0.0%	0.3%	1.6%	2.7%	6.1%	58.9%	20.0%	0.6%	1.2%	0.2%	2.4%	2.8%	1.2%
Cochin Jewish India	0.5%	0.0%	0.0%	0.0%	0.0%	4.7%	5.0%	2.3%	0.0%	0.0%	0.6%	0.1%	1.5%	22.9%	61.2%	0.2%	0.0%	0.0%	0.0%	0.2%	0.9%
Gujarat India	0.1%	0.1%	0.1%	0.1%	0.1%	0.1%	1.1%	0.1%	0.0%	0.5%	0.5%	0.7%	1.4%	25.1%	69.8%	0.1%	0.0%	0.0%	0.0%	0.0%	0.2%
Kalash Pakistan	0.0%	0.0%	0.0%	0.0%	0.0%	0.0%	1.3%	0.0%	0.0%	1.1%	5.2%	2.5%	16.4%	60.9%	11.8%	0.1%	0.0%	0.0%	0.0%	0.1%	0.4%
Kshatriya Uttar Pradesh India	0.2%	0.0%	0.2%	0.0%	0.6%	0.0%	2.2%	0.0%	0.2%	1.3%	1.8%	3.8%	0.5%	27.7%	60.5%	0.0%	0.1%	0.0%	0.2%	0.1%	0.5%
Makrani Pakistan	0.7%	3.7%	0.5%	0.2%	0.3%	2.5%	18.5%	0.8%	0.0%	0.0%	0.0%	0.0%	3.7%	65.7%	3.2%	0.0%	0.0%	0.0%	0.0%	0.0%	0.0%
Nepal	0.0%	0.1%	0.2%	0.2%	0.2%	0.1%	0.6%	0.1%	0.1%	0.5%	3.0%	1.6%	1.7%	27.2%	39.1%	0.3%	0.4%	4.2%	17.6%	2.1%	0.7%
Pashtun Pakistan	0.1%	0.1%	0.1%	0.0%	0.0%	0.2%	4.0%	0.6%	0.3%	2.3%	2.6%	1.1%	12.2%	53.5%	20.8%	0.2%	0.0%	0.1%	0.1%	1.4%	0.4%
Sindhi Pakistan	0.3%	1.8%	0.8%	0.0%	0.0%	0.2%	4.3%	0.4%	0.2%	0.2%	0.5%	1.1%	4.3%	57.2%	28.7%	0.0%	0.0%	0.0%	0.0%	0.0%	0.1%

21 World Regions Admixture: South Asian Populations (Part 2)

Population	Khoisan-Aka	West African	Nilotic	Horn of Africa	North African	Arabian	Mesopotamian	East Mediterranean	Iberian-Italian	Northwest European	Slavic-Baltic	Uralic	Caucasus Mountains	Indus Valley	South India	Oceanian	Southeast Asian	East Asian	Tibetan	Siberian-Arctic	Mesoamerican
Chamar India	0.0%	0.2%	0.3%	0.1%	0.0%	0.0%	0.0%	0.2%	0.0%	0.0%	1.2%	0.2%	0.0%	0.6%	94.3%	0.6%	0.6%	0.5%	0.5%	0.0%	0.7%
Chenchu India	0.6%	0.2%	0.0%	0.6%	0.0%	0.2%	0.0%	0.0%	0.0%	0.0%	0.0%	0.0%	0.0%	1.4%	92.8%	1.4%	1.0%	0.0%	1.4%	0.0%	0.5%
Dalit Tamil Nadu India	0.2%	0.2%	0.1%	0.0%	0.0%	0.0%	0.0%	0.0%	0.0%	0.0%	0.0%	0.0%	0.0%	0.0%	97.9%	1.5%	0.1%	0.0%	0.0%	0.0%	0.1%
Dharkar India	0.4%	0.0%	0.0%	0.0%	0.0%	0.7%	0.0%	0.3%	0.0%	0.9%	1.5%	0.4%	3.2%	13.2%	78.5%	0.1%	0.2%	0.2%	0.0%	0.1%	0.3%
Dusadh India	0.0%	0.1%	0.0%	0.0%	0.1%	0.0%	0.2%	0.0%	0.0%	0.0%	0.9%	0.0%	0.0%	4.6%	92.8%	0.3%	0.6%	0.3%	0.1%	0.0%	0.0%
Gond India	0.0%	0.2%	0.1%	0.0%	0.0%	0.0%	0.3%	0.0%	0.0%	2.6%	0.0%	0.1%	0.0%	6.3%	78.9%	3.9%	5.9%	0.6%	0.7%	0.0%	0.4%
Hakkipikki India	0.3%	0.0%	0.0%	0.0%	0.0%	0.0%	0.0%	0.0%	0.0%	0.0%	0.0%	0.0%	0.0%	2.8%	93.4%	1.4%	0.0%	0.0%	2.1%	0.0%	0.0%
Indian Singaporean	0.2%	0.2%	0.2%	0.1%	0.1%	0.0%	0.8%	0.3%	0.1%	0.8%	0.8%	0.5%	1.7%	17.4%	75.1%	0.5%	0.6%	0.2%	0.1%	0.1%	0.2%
Irula South India	0.2%	0.1%	0.1%	0.0%	0.0%	0.0%	0.0%	0.0%	0.0%	0.0%	0.0%	0.0%	0.0%	0.3%	98.3%	0.7%	0.2%	0.0%	0.1%	0.0%	0.1%
Kanjar India	0.0%	0.4%	0.1%	0.0%	0.1%	0.0%	0.8%	0.2%	0.2%	1.0%	1.9%	2.1%	0.1%	8.9%	83.6%	0.0%	0.2%	0.0%	0.0%	0.0%	0.6%
Kol India	0.1%	0.2%	0.0%	0.1%	0.0%	0.1%	0.0%	0.0%	0.0%	0.0%	0.2%	0.0%	0.7%	6.9%	87.6%	0.3%	0.1%	0.3%	2.4%	0.4%	0.4%
Kurumba India	0.5%	0.0%	0.2%	0.0%	0.0%	0.0%	0.0%	0.0%	0.0%	0.0%	0.0%	0.0%	0.1%	6.8%	92.3%	0.1%	0.0%	0.0%	0.0%	0.0%	0.0%
Madiga Andhra Pradesh India	0.2%	0.0%	0.0%	0.0%	0.0%	0.0%	0.2%	0.0%	0.0%	0.2%	0.0%	0.0%	0.0%	0.5%	95.9%	0.6%	0.6%	0.9%	0.6%	0.2%	0.0%
Mala Andhra Pradesh India	0.2%	0.3%	0.0%	0.0%	0.0%	0.0%	0.0%	0.0%	0.0%	0.0%	0.0%	0.0%	0.0%	0.0%	96.6%	1.0%	1.9%	0.0%	0.0%	0.0%	0.0%
Muslim Uttar Pradesh India	0.1%	0.1%	0.0%	0.0%	0.0%	0.0%	1.8%	0.8%	0.5%	0.8%	0.1%	1.2%	0.0%	15.9%	77.5%	0.2%	0.0%	0.0%	0.0%	0.6%	0.5%
North Kannadi India	0.5%	0.2%	0.6%	0.0%	0.0%	0.0%	0.0%	0.0%	0.0%	0.0%	0.0%	0.3%	0.0%	2.4%	92.2%	1.4%	0.3%	0.8%	0.6%	0.5%	0.3%
Paniya India	0.7%	0.0%	0.0%	0.0%	0.0%	0.0%	0.0%	0.0%	0.0%	0.0%	0.0%	0.0%	0.0%	0.0%	89.0%	5.2%	0.6%	0.9%	3.6%	0.0%	0.0%
Piramalai Kallar India	0.2%	0.2%	0.1%	0.2%	0.0%	0.0%	0.0%	0.1%	0.0%	0.0%	0.0%	0.0%	0.0%	2.5%	95.3%	0.5%	0.1%	0.1%	0.3%	0.1%	0.2%
Pulliyar India	0.2%	0.0%	0.0%	0.0%	0.0%	0.0%	0.0%	0.0%	0.0%	0.0%	0.0%	0.0%	0.0%	0.0%	90.7%	5.8%	2.9%	0.0%	0.4%	0.0%	0.0%
Romani Europe	0.0%	0.0%	0.0%	0.3%	0.2%	0.6%	8.1%	10.3%	13.7%	21.9%	13.8%	5.2%	7.7%	2.5%	15.2%	0.1%	0.2%	0.0%	0.0%	0.0%	0.3%
Sakilli India	0.7%	0.3%	0.0%	0.3%	0.0%	0.0%	0.0%	0.0%	0.0%	0.0%	0.0%	0.0%	0.0%	0.9%	96.7%	1.0%	0.0%	0.0%	0.0%	0.0%	0.0%
Scheduled Caste Uttar Pradesh India	0.0%	0.3%	0.0%	0.0%	0.0%	0.0%	0.0%	0.0%	0.0%	1.8%	0.0%	0.0%	2.0%	9.2%	85.7%	0.0%	0.0%	0.0%	0.7%	0.2%	0.2%
Velama India	0.4%	0.0%	0.2%	0.0%	0.0%	0.0%	1.5%	0.0%	0.0%	0.0%	0.0%	0.0%	0.5%	11.4%	85.7%	0.0%	0.0%	0.1%	0.0%	0.0%	0.1%

21 World Regions Admixture: East Asian Populations (Part 1)

Population	Khoisan-Aka	West African	Nilotic	Horn of Africa	North African	Arabian	Mesopotamian	East Mediterranean	Iberian-Italian	Northwest European	Slavic-Baltic	Uralic	Caucasus Mountains	Indus Valley	South India	Oceanian	Southeast Asian	East Asian	Tibetan	Siberian-Arctic	Mesoamerican
Bonda Orissa India	0.2%	0.0%	0.0%	0.0%	0.0%	0.0%	0.0%	0.0%	0.0%	0.0%	0.0%	0.0%	0.0%	0.0%	58.7%	3.2%	35.7%	0.7%	1.4%	0.0%	0.0%
Cambodia	0.3%	0.5%	0.2%	0.2%	0.0%	0.4%	0.1%	0.0%	0.1%	0.2%	0.2%	0.0%	0.0%	0.6%	3.2%	0.7%	66.5%	23.8%	2.3%	0.4%	0.4%
Dai China	0.1%	0.0%	0.0%	0.0%	0.0%	0.0%	0.0%	0.0%	0.0%	0.1%	0.0%	0.0%	0.0%	0.0%	0.0%	0.5%	38.7%	60.6%	0.0%	0.0%	0.0%
Ho Bihar India	0.0%	0.2%	0.0%	0.0%	0.0%	0.0%	0.0%	0.0%	0.0%	0.0%	0.0%	0.0%	0.0%	0.0%	69.1%	3.1%	26.0%	1.5%	0.0%	0.0%	0.0%
Iban Borneo	0.1%	0.0%	0.0%	0.0%	0.0%	0.0%	0.0%	0.0%	0.0%	0.0%	0.0%	0.0%	0.0%	0.0%	0.0%	1.2%	92.7%	6.0%	0.0%	0.0%	0.1%
Khmer Cambodia	0.1%	0.0%	0.7%	0.0%	0.0%	0.3%	0.0%	0.3%	0.2%	0.3%	0.0%	0.3%	0.0%	0.0%	4.4%	0.5%	53.9%	34.5%	3.8%	0.0%	0.7%
Malay Singaporean	0.2%	0.1%	0.2%	0.2%	0.1%	0.1%	0.3%	0.2%	0.0%	0.2%	0.2%	0.3%	0.2%	0.2%	4.5%	4.3%	67.5%	19.7%	0.7%	0.3%	0.4%
Melanesian Bougainville	0.2%	0.0%	0.2%	0.0%	0.1%	0.0%	0.0%	0.3%	0.0%	0.0%	0.0%	0.0%	0.0%	0.0%	0.0%	99.2%	0.0%	0.0%	0.0%	0.0%	0.0%
Papuan New Guinea	0.0%	0.0%	0.0%	0.0%	0.0%	0.0%	0.1%	0.0%	0.0%	0.0%	0.0%	0.0%	0.0%	0.0%	0.0%	99.9%	0.0%	0.0%	0.0%	0.0%	0.0%
Samoa	0.0%	0.0%	0.0%	0.0%	0.0%	0.0%	0.0%	0.1%	0.0%	0.0%	0.1%	0.0%	0.0%	0.0%	0.0%	55.9%	19.0%	24.8%	0.0%	0.0%	0.0%
Thailand	0.6%	0.3%	0.5%	0.2%	0.3%	0.9%	0.1%	0.1%	0.3%	0.1%	0.2%	0.4%	0.0%	0.6%	11.5%	1.7%	55.9%	22.7%	2.8%	0.6%	0.2%
Tonga	0.0%	0.0%	0.0%	0.0%	0.3%	0.0%	0.0%	0.1%	0.0%	0.0%	0.0%	0.2%	0.0%	0.0%	0.0%	61.2%	16.6%	21.6%	0.0%	0.0%	0.0%
Vietnam	0.5%	0.0%	0.0%	0.0%	0.0%	0.0%	0.0%	0.0%	0.0%	0.0%	0.0%	0.0%	0.0%	0.0%	0.1%	1.4%	32.2%	64.8%	1.1%	0.0%	0.0%

21 World Regions Admixture: East Asian Populations (Part 2)

Population	Khoisan-Aka	West African	Nilotic	Horn of Africa	North African	Arabian	Mesopotamian	East Mediterranean	Iberian-Italian	Northwest European	Slavic-Baltic	Uralic	Caucasus Mountains	Indus Valley	South India	Oceanian	Southeast Asian	East Asian	Tibetan	Siberian-Arctic	Mesoamerican
Burma	0.1%	0.3%	0.1%	0.0%	0.0%	0.0%	0.4%	0.0%	0.2%	0.0%	0.0%	0.2%	0.1%	1.3%	15.1%	0.6%	23.7%	18.6%	38.7%	0.5%	0.3%
Chinese Singaporean	0.1%	0.1%	0.1%	0.0%	0.0%	0.0%	0.0%	0.0%	0.0%	0.0%	0.0%	0.0%	0.0%	0.0%	0.1%	0.4%	9.3%	83.5%	5.6%	0.3%	0.4%
Chinese-American Denver CO	0.0%	0.1%	0.0%	0.0%	0.0%	0.0%	0.0%	0.0%	0.0%	0.0%	0.0%	0.0%	0.0%	0.0%	0.0%	0.4%	6.9%	77.8%	13.7%	0.7%	0.3%
Garo Meghalaya India	0.1%	0.6%	0.0%	0.2%	0.0%	0.0%	0.0%	0.0%	0.0%	0.0%	0.0%	0.0%	0.0%	0.0%	11.7%	0.8%	24.6%	7.8%	54.0%	0.0%	0.1%
Han Beijing China	0.1%	0.1%	0.0%	0.0%	0.0%	0.0%	0.0%	0.0%	0.0%	0.0%	0.0%	0.0%	0.0%	0.0%	0.0%	0.3%	2.4%	70.2%	24.3%	2.1%	0.5%
Han China	0.1%	0.0%	0.0%	0.0%	0.1%	0.0%	0.0%	0.0%	0.1%	0.0%	0.0%	0.0%	0.0%	0.0%	0.0%	0.4%	8.0%	80.2%	9.9%	0.7%	0.5%
Han Northern China	0.3%	0.0%	0.0%	0.0%	0.0%	0.0%	0.0%	0.1%	0.0%	0.0%	0.0%	0.0%	0.0%	0.0%	0.1%	0.3%	0.2%	59.1%	33.3%	5.5%	1.0%
Han Southern China	0.0%	0.1%	0.0%	0.0%	0.0%	0.0%	0.0%	0.0%	0.0%	0.0%	0.0%	0.1%	0.0%	0.0%	0.0%	0.6%	7.2%	81.7%	9.4%	0.4%	0.3%
Japan	0.1%	0.0%	0.0%	0.0%	0.0%	0.0%	0.0%	0.0%	0.0%	0.0%	0.0%	0.0%	0.0%	0.0%	0.0%	0.5%	0.8%	59.2%	25.2%	13.3%	0.8%
Lahu China	0.2%	0.2%	0.0%	0.0%	0.0%	0.1%	0.0%	0.0%	0.0%	0.0%	0.0%	0.0%	0.0%	0.0%	0.0%	0.2%	33.3%	47.3%	17.7%	0.1%	0.8%
Miao China	0.1%	0.0%	0.0%	0.0%	0.0%	0.0%	0.0%	0.2%	0.0%	0.0%	0.2%	0.0%	0.0%	0.1%	0.0%	0.1%	11.5%	74.8%	12.6%	0.0%	0.4%
Monguor China	0.2%	0.0%	0.2%	0.1%	0.4%	0.0%	0.6%	0.3%	0.0%	0.0%	0.5%	0.7%	0.2%	0.5%	0.3%	0.6%	0.0%	36.8%	48.5%	9.9%	0.3%
Naga India	0.0%	0.0%	0.0%	0.0%	0.0%	0.0%	0.0%	0.0%	0.0%	0.0%	0.0%	0.0%	0.0%	0.0%	0.0%	0.3%	0.1%	17.4%	82.0%	0.0%	0.2%
Naxi China	0.2%	0.4%	0.0%	0.0%	0.1%	0.0%	0.0%	0.0%	0.0%	0.0%	0.0%	0.0%	0.0%	0.0%	0.4%	1.2%	3.7%	30.3%	63.6%	0.0%	0.0%
She China	0.3%	0.2%	0.0%	0.0%	0.0%	0.0%	0.0%	0.0%	0.0%	0.0%	0.0%	0.0%	0.0%	0.0%	0.0%	0.4%	6.0%	87.0%	5.4%	0.3%	0.3%
Tibet	0.1%	0.3%	0.2%	0.1%	0.1%	0.0%	0.0%	0.0%	0.1%	0.0%	0.1%	0.0%	0.0%	0.1%	0.7%	1.0%	0.0%	4.7%	89.1%	2.7%	0.6%
Tujia China	0.4%	0.0%	0.0%	0.0%	0.0%	0.0%	0.0%	0.0%	0.0%	0.0%	0.0%	0.0%	0.0%	0.0%	0.0%	0.3%	7.2%	73.0%	18.3%	0.4%	0.5%
Yi China	0.1%	0.1%	0.1%	0.0%	0.0%	0.0%	0.0%	0.0%	0.0%	0.0%	0.0%	0.0%	0.1%	0.0%	0.0%	0.4%	5.7%	33.4%	59.1%	0.7%	0.4%

21 World Regions Admixture: North Asian Populations

Population	Khoisan-Aka	West African	Nilotic	Horn of Africa	North African	Arabian	Mesopotamian	East Mediterranean	Iberian-Italian	Northwest European	Slavic-Baltic	Uralic	Caucasus Mountains	Indus Valley	South India	Oceanian	Southeast Asian	East Asian	Tibetan	Siberian-Arctic	Mesoamerican
Altai Russian Federation	0.2%	0.4%	0.1%	0.0%	0.0%	0.0%	0.4%	0.5%	0.5%	2.2%	0.6%	2.4%	1.2%	3.2%	1.0%	0.4%	0.4%	2.0%	10.2%	73.0%	1.4%
Buryat China	0.0%	0.0%	0.0%	0.0%	0.0%	0.0%	0.0%	0.0%	0.0%	0.0%	0.0%	0.0%	0.0%	0.0%	0.0%	0.1%	0.1%	8.4%	20.8%	70.2%	0.2%
Buryat Russian Federation	0.1%	0.0%	0.0%	0.0%	0.0%	0.0%	0.0%	0.0%	0.0%	0.0%	0.0%	0.0%	0.0%	0.0%	0.0%	0.1%	0.1%	4.4%	18.7%	76.5%	0.1%
Chuvash Russian Federation	0.0%	0.2%	0.2%	0.2%	0.0%	0.1%	0.8%	0.4%	1.2%	9.5%	24.0%	34.9%	3.2%	1.2%	0.6%	0.3%	0.0%	0.0%	0.1%	21.4%	1.6%
Daur China	0.0%	0.0%	0.0%	0.0%	0.0%	0.0%	0.0%	0.0%	0.0%	0.0%	0.0%	0.0%	0.0%	0.0%	0.0%	0.0%	0.0%	28.4%	33.0%	38.5%	0.1%
Dolgan Russian Federation	0.0%	0.0%	0.0%	0.1%	0.0%	0.0%	0.0%	0.0%	0.4%	0.6%	3.2%	2.9%	1.5%	0.0%	1.1%	0.0%	0.0%	0.2%	0.0%	89.7%	0.2%
Evenk Russian Federation	0.0%	0.0%	0.0%	0.0%	0.0%	0.0%	0.0%	0.0%	0.0%	0.0%	0.0%	0.0%	0.0%	0.0%	0.0%	0.0%	0.0%	0.8%	2.3%	96.9%	0.0%
Hazara Pakistan	0.1%	0.1%	0.0%	0.0%	0.2%	0.2%	5.9%	0.9%	1.4%	1.2%	1.8%	2.3%	8.5%	17.8%	4.8%	0.7%	1.2%	7.4%	10.6%	34.9%	0.2%
Hezhen China	0.0%	0.0%	0.0%	0.0%	0.0%	0.0%	0.0%	0.0%	0.0%	0.0%	0.0%	0.0%	0.0%	0.0%	0.0%	0.0%	0.0%	29.2%	31.3%	39.4%	0.1%
Kyrgyz	0.2%	0.1%	0.1%	0.2%	0.3%	0.9%	1.4%	1.6%	0.6%	2.2%	1.8%	2.5%	5.5%	4.7%	1.5%	0.9%	0.7%	7.2%	16.1%	51.3%	0.4%
Mongol Mongolia	0.2%	0.1%	0.0%	0.3%	0.3%	0.2%	0.0%	0.7%	0.5%	0.9%	0.8%	0.7%	0.2%	0.0%	0.2%	0.4%	0.0%	5.4%	21.8%	67.1%	0.2%
Mongola China	0.0%	0.0%	0.0%	0.0%	0.0%	0.0%	0.0%	0.0%	0.0%	0.0%	0.0%	0.1%	0.0%	0.0%	0.0%	0.0%	0.3%	34.9%	26.0%	38.2%	0.5%
Nganasan Russian Federation	0.0%	0.0%	0.0%	0.0%	0.0%	0.0%	0.0%	0.0%	0.0%	0.0%	0.0%	0.0%	0.0%	0.0%	0.0%	0.1%	0.0%	0.0%	0.5%	99.4%	0.0%
Oroqen China	0.0%	0.0%	0.0%	0.0%	0.0%	0.0%	0.0%	0.0%	0.0%	0.0%	0.0%	0.0%	0.0%	0.0%	0.0%	0.0%	0.0%	18.9%	23.1%	58.0%	0.0%
Selkup Russian Federation	0.0%	0.2%	0.0%	0.0%	0.0%	0.0%	0.0%	0.0%	0.0%	3.8%	3.1%	17.5%	0.0%	0.2%	0.0%	0.0%	0.0%	0.0%	0.0%	72.8%	2.5%
Tuvinians Russian Federation	0.0%	0.0%	0.0%	0.0%	0.0%	0.0%	0.0%	0.0%	0.0%	0.0%	0.0%	0.0%	0.0%	0.0%	0.0%	0.2%	0.0%	2.1%	16.3%	80.9%	0.4%
Uyghur China	0.2%	0.1%	0.1%	0.0%	0.1%	0.7%	4.0%	0.7%	0.3%	6.1%	4.4%	1.5%	8.6%	14.0%	3.5%	0.8%	0.9%	9.2%	17.8%	26.2%	0.6%
Uzbek Central Asia	0.2%	0.0%	0.2%	0.1%	0.6%	0.0%	6.1%	2.5%	1.0%	3.2%	5.5%	5.6%	9.2%	17.2%	3.8%	0.1%	0.8%	4.6%	8.2%	30.0%	0.8%
Xibo China	0.0%	0.0%	0.0%	0.0%	0.2%	0.0%	0.0%	0.7%	0.0%	0.4%	0.5%	0.4%	0.0%	0.0%	0.0%	0.1%	0.7%	38.8%	31.6%	26.4%	0.2%
Yakut Siberia	0.0%	0.0%	0.0%	0.0%	0.1%	0.1%	0.0%	0.0%	0.0%	0.1%	0.6%	0.2%	0.1%	0.0%	0.1%	0.0%	0.0%	0.7%	5.0%	93.1%	0.0%
Yukaghir Russian Federation	0.0%	0.0%	0.0%	0.0%	0.0%	0.0%	0.0%	0.0%	0.0%	0.0%	0.0%	0.0%	0.0%	0.0%	0.0%	0.0%	0.0%	0.0%	0.3%	98.6%	1.1%



21 World Regions Admixture: Native American and Latino Populations

Population	Khoisan-Alka	West African	Nilotic	Horn of Africa	North African	Arabian	Mesopotamian	East Mediterranean	Iberian-Italian	Northwest European	Slavic-Baltic	Uralic	Caucasus Mountains	Indus Valley	South India	Oceanian	Southeast Asian	East Asian	Tibetan	Siberian-Arctic	Mesoamerican
Aleut Alaska	0.1%	0.0%	0.0%	0.0%	0.0%	0.0%	0.0%	0.9%	1.7%	15.4%	24.6%	21.6%	0.5%	0.7%	0.6%	0.3%	0.2%	0.3%	0.0%	22.6%	10.6%
Amerindian Colombia	0.3%	0.8%	0.0%	0.0%	0.2%	0.0%	0.0%	0.0%	0.0%	0.0%	0.0%	0.0%	0.0%	0.5%	0.0%	0.0%	0.0%	0.0%	0.0%	0.2%	97.9%
Aymara La Paz Bolivia	0.1%	0.3%	0.1%	0.1%	0.6%	0.8%	0.4%	0.6%	4.3%	2.5%	1.0%	0.5%	0.1%	0.2%	0.3%	0.3%	0.3%	0.6%	1.1%	0.7%	84.9%
Chukchi Russian Federation	0.0%	0.0%	0.0%	0.0%	0.0%	0.0%	0.0%	0.0%	0.0%	0.6%	4.8%	3.2%	0.0%	0.0%	0.0%	0.1%	0.0%	0.0%	0.0%	75.5%	15.8%
Colombia	0.8%	5.8%	0.9%	0.7%	3.2%	1.4%	1.3%	4.1%	35.0%	10.6%	3.6%	1.6%	1.3%	0.6%	0.3%	0.4%	0.3%	0.2%	0.2%	0.6%	26.9%
Eastern Greenland	0.0%	0.0%	0.0%	0.0%	0.0%	0.0%	0.0%	0.0%	0.6%	3.4%	2.0%	2.7%	0.1%	0.0%	0.0%	0.0%	0.0%	0.0%	0.0%	59.7%	31.3%
Ecuador	0.8%	3.3%	0.9%	0.5%	3.5%	0.3%	3.5%	1.9%	17.5%	7.7%	2.5%	2.0%	1.1%	0.2%	0.6%	0.7%	0.4%	0.9%	0.5%	2.2%	49.0%
Karitiana Brazil	0.0%	0.0%	0.0%	0.0%	0.0%	0.0%	0.0%	0.0%	0.0%	0.0%	0.0%	0.0%	0.0%	0.0%	0.0%	0.0%	0.0%	0.0%	0.0%	0.0%	100.0%
Koryak Russian Federation	0.0%	0.0%	0.0%	0.0%	0.0%	0.0%	0.0%	0.0%	0.0%	1.5%	2.4%	1.7%	0.0%	0.0%	0.0%	0.0%	0.0%	0.0%	0.0%	87.3%	7.1%
Maya Mexico	0.2%	0.5%	0.1%	0.1%	0.7%	1.1%	0.0%	0.6%	2.4%	0.9%	0.3%	1.1%	0.9%	0.5%	0.2%	0.6%	1.0%	1.1%	0.3%	2.2%	85.0%
Mexican-American Los Angeles CA	0.7%	1.4%	0.5%	0.8%	3.0%	1.8%	1.9%	3.6%	21.7%	7.0%	3.9%	1.3%	1.0%	0.6%	0.6%	0.4%	0.3%	0.5%	0.8%	2.8%	45.4%
Native American US and Canada	0.7%	0.4%	0.8%	0.2%	1.2%	0.1%	0.3%	0.9%	14.8%	18.0%	8.0%	3.7%	0.9%	1.6%	0.5%	0.6%	0.6%	0.0%	1.1%	3.6%	41.7%
Pima Mexico	0.4%	0.2%	0.0%	0.1%	0.0%	0.0%	0.3%	0.0%	0.0%	0.0%	0.2%	1.2%	0.0%	0.0%	0.2%	0.2%	0.4%	0.2%	1.4%	1.9%	93.4%
Puerto Rico	1.1%	11.3%	1.1%	1.2%	7.7%	3.3%	1.4%	3.4%	33.7%	13.4%	4.1%	1.7%	1.3%	0.4%	0.3%	0.4%	0.2%	0.2%	0.2%	0.5%	13.0%
Surui Brazil	0.0%	0.0%	0.0%	0.0%	0.0%	0.0%	0.0%	0.0%	0.0%	0.0%	0.0%	0.0%	0.0%	0.0%	0.0%	0.0%	0.0%	0.0%	0.0%	0.0%	100.0%
Totonac Mexico	0.1%	0.1%	0.1%	0.0%	0.0%	0.0%	0.3%	0.0%	0.4%	0.1%	0.6%	0.7%	0.1%	0.0%	0.1%	0.0%	0.1%	0.9%	2.1%	2.2%	91.9%
Western Greenland	0.0%	0.0%	0.1%	0.0%	0.0%	0.3%	0.0%	0.2%	1.8%	13.3%	2.9%	2.2%	0.0%	0.0%	0.8%	0.0%	0.0%	0.0%	0.0%	54.6%	23.9%