



**2012**

## Statistical Profile



## County Durham & Area Action Partnerships



Area Action Partnership



Research and Consultation, Assistant Chief Executive's Office.



## Contents

<b>1. Foreword</b>	<b>4</b>
<b>2. Data Construction Method</b>	<b>4</b>
<b>3. Altogether Better Durham – Priority Themes</b>	<b>4</b>
<b>4. Background</b>	<b>5</b>
<b>5. People and Place</b>	
a. Population	
i. Percentage change since 2005	6
ii. Age Pyramid	7
iii. Counts	8
b. Ethnicity	9
c. Life Expectancy (by MSOA)	10
d. Public Perception	10
<b>6. Index of Deprivation 2010</b>	<b>11</b>
<b>7. Altogether Wealthier</b>	
a. Business and Industry	
i. Businesses and Employees	13
ii. Income	15
iii. Job Centre Vacancies	15
b. Unemployment	
i. JSA Claimants	16
ii. Age and Duration	18
iii. Youth Unemployment in the 18 to 24 population	20
iv. Youth Unemployment: NEETs and JSA Claimants	22
c. Young People participating in Youth Work Programmes	23
d. Key Benefits	24
e. Worklessness	26
f. Fuel Poverty	27
g. Council Tax Bands	28
<b>8. Altogether Better for Children and Young People</b>	
a. Primary Schools	
i. Pupils Attending Schools	29
ii. Pupils Living in the AAP	31
b. Secondary Schools	
i. Pupils Attending Schools	32
ii. Pupils Living in the AAP	35
c. Further Education	36
d. NEETs	37
e. School Absences	38
f. Child Poverty	39

<b>9. Altogether Healthier</b>	
a. Healthy Lifestyles (JSNA)	40
b. Incapacity/Severe Disablement Benefits – Reasons for Claiming	42
c. Adult Referrals (JSNA)	
i. Adult Referrals	43
ii. Alcohol and Drug Referrals	44
d. Home/Day Care and Direct Payments (JSNA)	45
e. Teenage Conceptions	46
<b>10. Altogether Safer</b>	
a. Crime Rates	47
b. Anti-Social Behaviour (ASB) rates	
i. Overall ASB rates	48
ii. Youth ASB rates	49
<b>11. Altogether Greener</b>	
a. Domestic Energy Use and Household Energy Efficiency	50
<b>Appendices</b>	51



## 1. Foreword

This profile pulls together a range of indicators to provide a data profile of County Durham and of the people who live there and of the [Area Action Partnerships](#) within the county.

## 2. Data Construction Method

The figures quoted in this profile were the latest available in June 2012. Figures for the AAP have been constructed from lower geographical areas through a process of aggregation using census wards for greater accuracy (unless otherwise stated). In some cases lower super output area (LSOA) figures, rounded to the nearest five, are used. The various indicators have then been grouped into the council's five '**Altogether**' priority themes.

Other variances in totals are due to rounding errors and differences in aggregation of subcategories within the dataset, for example age groups. Differences in household/dwelling counts are due to using different databases both locally and nationally.

To enhance links between the profile and the [County Durham Joint Strategic Needs Assessment](#) (JSNA) for the county a number of new indicators have been included that are used in the JSNA. However, not all the indicators included in the AAP profiles have been included in this county profile, as it was not possible to re-cast the data to the AAPs.

## 3. Altogether Better Durham – Priority Themes

The County Durham Partnership has developed a vision to reflect the views and aspirations of the community and opportunities for improvement. This is focused around an 'Altogether Better Durham'. This vision is comprised of two components, being to have an 'Altogether Better Place' which is 'Altogether Better for People'.

This vision helps to provide a framework which guides all of our detailed plans and programmes which will turn our vision into a reality and comprises five priority themes:

**Altogether Wealthier:** Focusing on creating a vibrant economy and putting regeneration and economic development at the heart of all our plans.

**Altogether Better for Children and Young People:** Enabling children and young people to develop and achieve their aspirations and to maximise their potential in line with Every Child Matters.

**Altogether Healthier:** Improving health and wellbeing.

**Altogether Safer:** Creating a safer and more cohesive county.

**Altogether Greener:** Ensuring an attractive and 'liveable' local environment, and contributing to tackling global environment challenges.

More detailed, supporting and local information can be found in the following:

### 1. Documents:

- [Joint Strategic Needs Assessment \(JSNA\)](#)
- [Public Health Observatories – Health Profiles](#)

### 2. Websites:

- [Durham County Council Website \(www.durham.gov.uk/stats\)](http://www.durham.gov.uk/stats)
- [Neighbourhood Statistics](#)
- [Nomisweb](#)

## 4. Background

Situated in the north east of the country, County Durham stretches from Peterlee and Seaham in the east, to Harwood and Killhope in the west and Burnopfield in the north to Barningham in the south. The county is bordered by Sunderland, Gateshead, Northumberland, Cumbria, North Yorkshire, Darlington, Stockton-on-Tees and Hartlepool.

The county has 14 AAPs:

- 3 Towns Partnership.
- 4 Together Partnership.
- Bishop Auckland and Shildon.
- Chester-le-Street & District.
- Derwent Valley.
- Durham.
- East Durham.
- East Durham Rural.
- Great Aycliffe & Middridge.
- Mid Durham.
- Spennymoor.
- Stanley.
- Teesdale.
- Weardale.

Throughout history, County Durham has been strategically important to settlers ranging from the Romans to the Angles, Saxons and Normans. Northumbria became the leading centre of the Christian church in Britain with the foundation of Durham Cathedral in 1093 acting as a lasting reminder of the County's legacy to Christian worship in Britain.

Following the Norman Conquests, William the Conqueror invested the Bishops of Durham with combined secular and spiritual powers to control the modern counties of Cleveland, Durham and Tyne and Wear. The Prince Bishops levied taxes, raised armies, minted money, controlled the courts and were effectively 'kings' of North East England until their powers were dramatically diminished by Henry VIII in 1536.

In the 18th and 19th centuries, County Durham became a world leader in the Industrial Revolution, with the county's development based upon coal and iron production. The area's influence on the world was demonstrated by the development of the world's first passenger steam railway at Stockton and Darlington in 1825.

The fourteen AAP profiles, upon which this profile is based, are available on the Durham County Council website at: [County Durham AAP Profiles](#).

## 5. People and Place

### a(i). Population<sup>1</sup>: Percentage change since 2005

- The estimated population of the county increased by 3.1% between 2005 and 2010, an increase of over 15,100 people.
- As with other areas and the nation, the county has an increasingly aging population, with the retired population (people aged 65 and over) increasing by 7.1% in the county since 2005. This continually aging population has and will continue to have a significant impact on resources and services provided to the residents in the county.
- One method of measuring the effect of an aging population is through the dependency ratio<sup>2</sup>. The county's dependency ratio has fallen from 547 dependents per 1,000 working age people to 542 since 2005. However if only the retired population is considered the figures rise from 265 to 275 retired dependants per 1,000 people of working age. This increase in the retired population will continue to place increasing pressure on services for the older person.

Table 1a: Population change: 2005 to 2010

Area/MSOA	2005 to 2010 change in population - % in age group					
	0-4	5-15	Working Age <sup>1</sup>	Retired <sup>2</sup>	85+	All People
3 Towns Partnership	18.6	-5.2	4.5	6.3	2.0	4.3
4 Together Partnership	-2.1	-17.3	-3.7	2.0	17.3	-4.5
Bishop Auckland and Shildon	8.0	-5.8	1.7	2.5	24.6	1.2
Chester-le-Street & District	11.3	-8.7	-1.6	10.3	18.6	0.1
Derwent Valley	21.3	-5.7	5.1	7.4	22.6	4.9
Durham	16.8	-3.1	14.2	12.4	26.9	12.3
East Durham	12.5	-10.4	3.4	4.3	21.6	2.1
East Durham Rural	2.6	-3.2	4.2	11.5	14.8	4.3
Great Aycliffe & Middlesbrough	6.9	-10.4	-1.4	9.0	28.0	-0.6
Mid Durham	11.9	-6.1	6.7	7.3	24.6	5.4
Spennymoor	11.0	-4.2	-0.3	5.1	40.3	0.7
Stanley	21.3	-10.2	1.6	5.3	14.7	1.7
Teesdale	2.3	-4.9	-1.8	8.6	18.1	0.1
Weardale	-0.8	-8.8	-1.8	11.2	5.9	0.2
<b>County Durham</b>	<b>11.8</b>	<b>-7.6</b>	<b>3.5</b>	<b>7.1</b>	<b>20.5</b>	<b>3.1</b>
<b>North East</b>	<b>10.6</b>	<b>-8.9</b>	<b>3.4</b>	<b>4.4</b>	<b>22.6</b>	<b>2.3</b>
<b>England &amp; Wales</b>	<b>12.7</b>	<b>-4.8</b>	<b>3.4</b>	<b>6.9</b>	<b>20.4</b>	<b>3.4</b>

Source: ONS 2010 Experimental census ward population estimates.

1. Working Age is defined as Male/Female 16/64.

2. Retired is defined as Male/Female 65+.

<sup>1</sup> These population figures, (unless otherwise stated), are the ONS 2010 mid year population estimates. The detailed population estimates from the 2011 Census will become available in the winter of 2012.

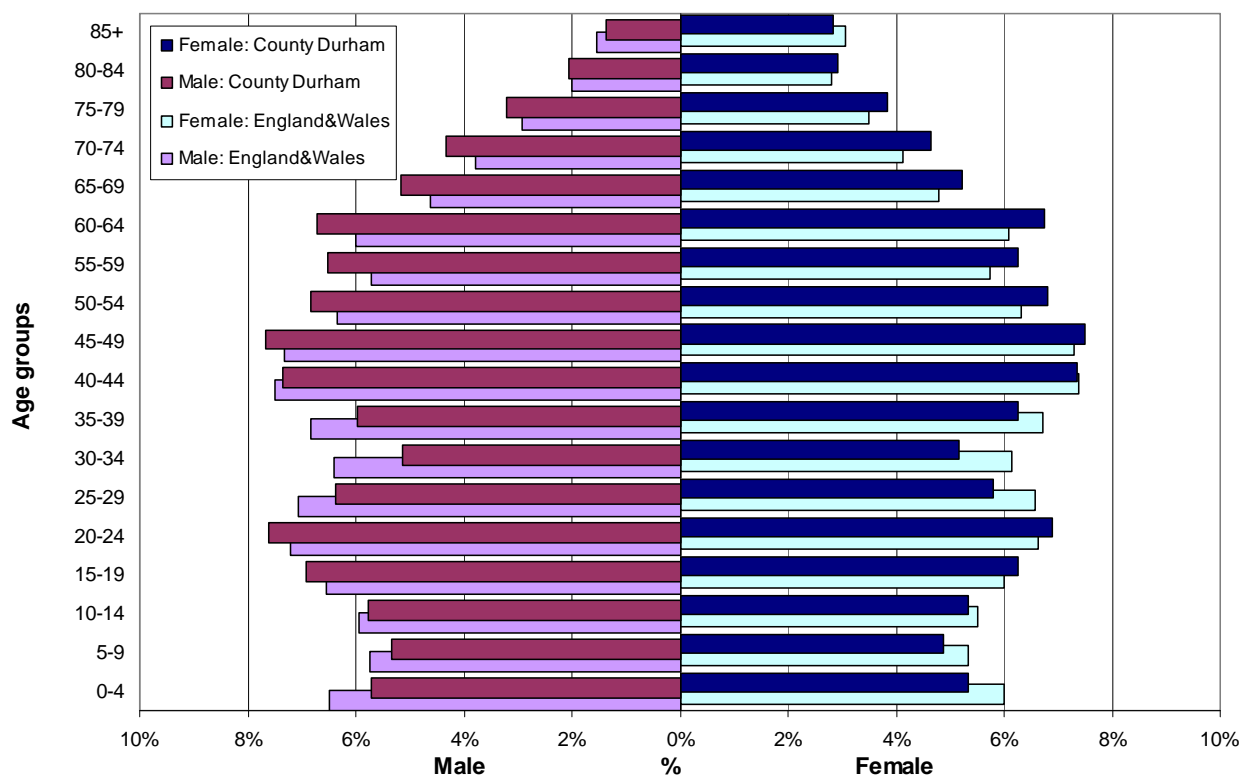
<sup>2</sup> The dependency ratio compares how many people there are in the area who are assumed to be working (i.e. people aged 16-64) against both the number of children aged 0-15 and those of retirement age. A high dependency ratio implies that an area is suffering from the effects of its age structure, with children and the elderly unable to contribute to service provision in the ways that those of working age do. Instead they can be liable to put pressure on local services such as schooling, health, and social care.

## 5. People and Place

### a(ii). Population: Age Pyramid

- The proportion of people aged 45 to 84 is larger in the county than in England & Wales.

Figure 1: Age Pyramid – 5 year age groups, (ONS mid 2010 population estimates).





## 5. People and Place

### a(iii). Population: Counts

Table 1b: 2010 population age groups

Area/MSOA	2010 - Age Groups					
	0-4	5-15	Working Age <sup>1</sup>	Retired <sup>2</sup>	85+	All People
3 Towns Partnership	1537	2988	15306	4401	563	24233
4 Together Partnership	995	2130	11249	3396	406	17770
Bishop Auckland and Shildon	2592	5375	26258	7443	979	41668
Chester-le-Street & District	2967	6433	33914	9896	1000	53210
Derwent Valley	2629	5231	27772	8000	1063	43632
Durham	2648	5678	47435	9788	1118	65549
East Durham	5543	11821	60042	16855	1897	94261
East Durham Rural	1459	3168	16543	4463	509	25633
Great Aycliffe & Middridge	1523	3502	16693	4644	444	26362
Mid Durham	1751	3860	22123	5852	727	33586
Spennymoor	1151	2456	13295	3606	441	20508
Stanley	2004	3723	20452	5494	696	31673
Teesdale	1068	3013	15180	5349	678	24610
Weardale	308	846	5086	1868	242	8109
<b>County Durham</b>	<b>28,176</b>	<b>60,225</b>	<b>331,347</b>	<b>91,056</b>	<b>10,761</b>	<b>510,804</b>
<b>North East</b>	<b>148,700</b>	<b>309,300</b>	<b>1,699,700</b>	<b>448,900</b>	<b>56,500</b>	<b>2,606,600</b>
<b>England &amp; Wales</b>	<b>3,440,700</b>	<b>6,873,700</b>	<b>35,761,700</b>	<b>9,164,400</b>	<b>1,274,300</b>	<b>55,240,500</b>

Source: ONS 2010 Experimental census ward population estimates.

1. Working Age is defined as Male/Female 16/64.

2. Retired is defined as Male/Female 65+.

## 5. People and Place

### b. Ethnicity:

- In 2001 the county had a low percentage of the population from black, Asian and minority ethnic groups.
- Only Durham AAP has a higher ethnic population than the region which is mainly due to the high student population resident in the area.

Table 2: Percentage of the population by ethnic group

AAP/Area	White	Black, Asian and minority ethnic Total	Mixed	Asian	Black	Chinese/ Other
3 Towns Partnership	99.20	0.8	0.23	0.13	0.21	0.23
4 Together Partnership	99.53	0.47	0.17	0.13	0.1	0.08
Bishop Auckland and Shildon	99.22	0.78	0.24	0.34	0.09	0.1
Chester-le-Street & District	99.03	0.97	0.29	0.24	0.04	0.4
Derwent Valley	99.38	0.62	0.3	0.2	0.04	0.08
Durham	97.01	2.99	0.71	0.96	0.27	1.05
East Durham	99.24	0.76	0.23	0.37	0.02	0.15
East Durham Rural	99.1	0.9	0.22	0.31	0.06	0.31
Great Aycliffe & Middridge	99.12	0.88	0.45	0.18	0.07	0.18
Mid Durham	99.28	0.72	0.26	0.21	0.09	0.16
Spennymoor	99.28	0.72	0.23	0.2	0.07	0.23
Stanley	99.41	0.59	0.23	0.26	0.02	0.07
Teesdale	99.26	0.74	0.32	0.11	0.04	0.28
Weardale	99.33	0.67	0.26	0.12	0.04	0.25
<b>County Durham</b>	<b>98.98</b>	<b>1.02</b>	<b>0.32</b>	<b>0.33</b>	<b>0.08</b>	<b>0.29</b>
<b>North East</b>	<b>97.61</b>	<b>2.39</b>	<b>0.49</b>	<b>1.34</b>	<b>0.16</b>	<b>0.41</b>
<b>England</b>	<b>90.92</b>	<b>9.08</b>	<b>1.31</b>	<b>4.58</b>	<b>2.30</b>	<b>0.89</b>

Source: Office of National Statistics (ONS) - 2001 Census

## 5. People and Place

### c. Life expectancy<sup>3</sup>:

- The county has relatively low male and female life expectancies when compared to England.

Table 3: Four year average (2006 to 2010) life expectancies

Life Expectancy 2006 to 2010		
Area/MSOA	Male	Female
County Durham	76.9	80.9
England	78.3	82.3

Source: Public Health Observatories website, 2012. Averaged between 2006 and 2010.

Average life expectancy from birth for those born between 2006 and 2010.

### d. Public Perception – 2010 Residents' Survey:

- Nearly nine out of ten of the county's residents (88%) were satisfied with their local area as a place to live.
- 85% of the county's residents thought that County Durham was an attractive place to live.
- Less than half the county's residents (47%) were satisfied with the state of the roads and pavements in their local area.
- 77% of the county's residents were satisfied with the standard of street cleaning in their area.
- Around one in 4 (24%) of the county's residents were aware of their local AAP.
- However, just over one third of respondents (39%) in the county felt they could influence local decision making in their local area.
- Around three quarters (74%) of the county's residents regarded their health as either good or very good.
- 10% of the county's residents felt either very or fairly unsafe in their local neighbourhood at night.

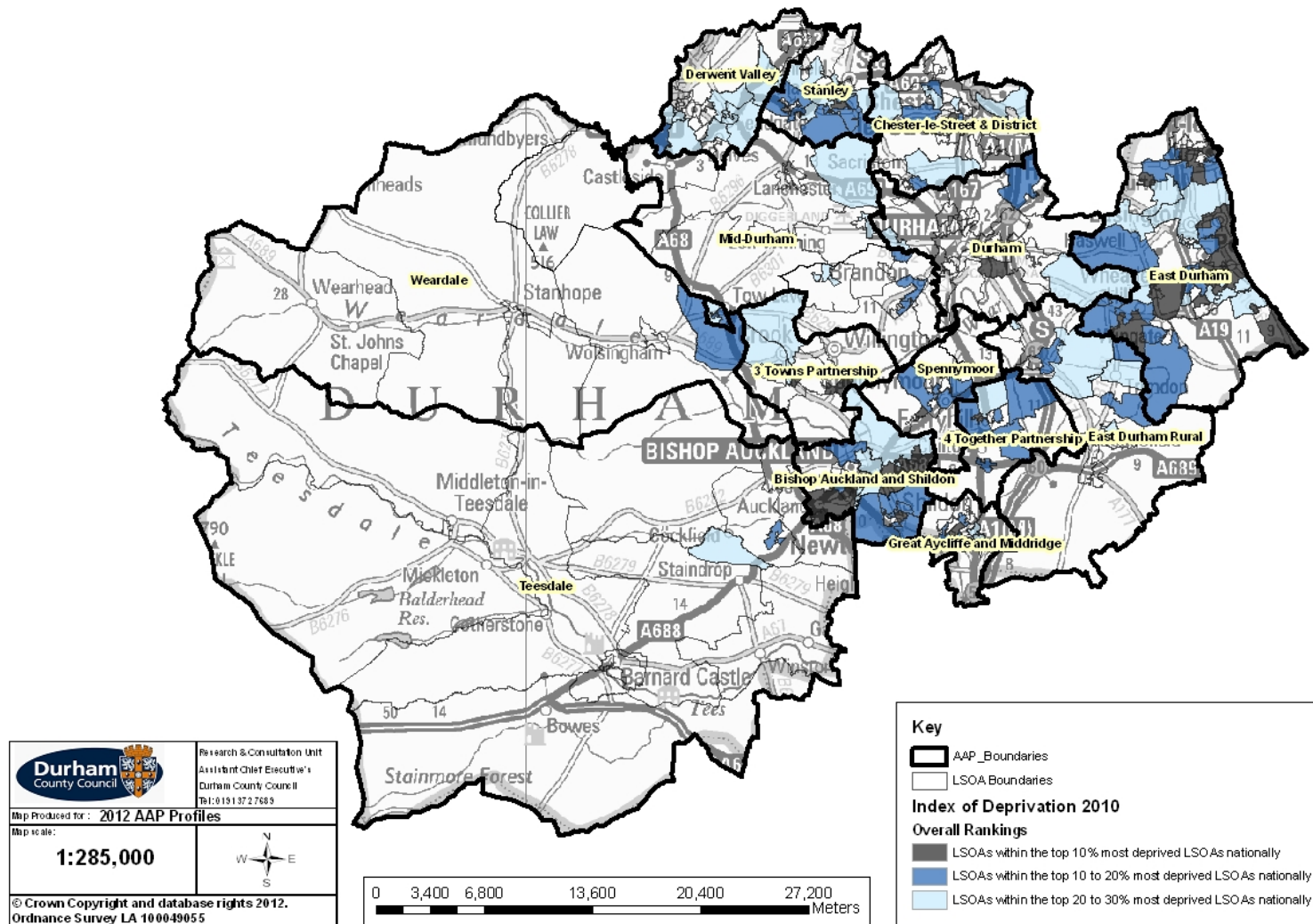
The results from this survey are available on the Durham County Council website at: [Residents Survey 2010](#).

---

<sup>3</sup> Definition: the probable number of years a person will live if born during the specified time period, as determined by mortality in their specific geographic area. It may be individually determined by the person's condition or race, sex, age, or other demographic factors.

## 6. Index of Deprivation 2010

Map 2: Index of Deprivation 2010



Crown Copyright – Durham County Council LA 100049055 2012

## 6. Index of Deprivation 2010

### Deprivation:

- A higher percentage of the population living in the county live in the top 10% and top 30% most deprived areas nationally, (11.4% and 45.4% respectively), when compared with the England (10% and 30% respectively), on average.
- There are higher levels of deprivation in the Employment, Health and Education domains when compared to England, in the top 10% most deprived areas. Appendix 1 contains more detailed tables by domain for the county and AAPs.
- In the top 30% most deprived areas there are higher percentages of the county's population suffering deprivation in all the domains except for the Housing, Crime and the Environment domains.

Table 4a: Percentage of the population living in deprived areas in the county

ID2010 Domain	County Durham	
	Top 10%	Top 30%
<b>Overall</b>	<b>11.4%</b>	<b>45.4%</b>
<b>Income</b>	9.0%	42.3%
<b>Employment</b>	30.8%	64.7%
<b>Health</b>	27.5%	70.7%
<b>Education</b>	15.3%	46.7%
<b>Housing</b>	1.8%	8.2%
<b>Crime</b>	4.1%	21.6%
<b>Environment</b>	0.0%	0.7%
<b>Child Index</b>	4.8%	34.6%
<b>Older Person Index</b>	5.5%	39.9%

Source: Communities and Local Government Index of Deprivation 2010, ONS 2008 Population estimates

Table 4b: Percentage of the population living in deprived areas in AAPs

AAP/Area	ID2010 Domain Overall	
	Top 10%	Top 30%
3 Towns Partnership	25.5	60.1
4 Together Partnership	8.5	63.1
Bishop Auckland and Shildon	33.1	70.1
Chester-le-Street & District	2.9	35.9
Derwent Valley	0.0	33.1
Durham	2.7	13.8
East Durham	29.0	73.9
East Durham Rural	0.0	40.9
Great Aycliffe & Middridge	10.6	42.1
Mid Durham	0.0	28.7
Spennymoor	8.3	39.4
Stanley	5.1	70.5
Teesdale	0.0	10.3
Weardale	0.0	2.1
<b>County Durham</b>	<b>11.4</b>	<b>45.4</b>

Source: Communities and Local Government Index of Deprivation 2010, ONS 2008 Population estimates.

## 7. Altogether Wealthier

### a(i). Business and Industry: Businesses and Employees<sup>4</sup>

- The majority of businesses in the county are classed as small with 10 or fewer employees.
- There was an increase in the number of businesses in the county of 6.2% between 2005/2007 and 2007/2009.

Table 5a: Percentage of businesses

		Business Units						
		2005 to 2007			2007 to 2009			% Change
		Total	Less than 10 Employees	11 or more Employees	Total	Less than 10 Employees	11 or more Employees	Total Businesses
3 Towns Partnership	Count	593	499	94	645	563	82	8.7
	%	4.4	84.1	15.9	4.5	87.3	12.7	
4 Together Partnership	Count	426	354	71	449	393	56	5.5
	%	3.2	83.2	16.8	3.1	87.5	12.5	
Bishop Auckland and Shildon	Count	1,355	1,097	258	1,416	1,162	254	4.5
	%	10	80.9	19.1	9.9	82.1	17.9	
Chester-le-Street & District	Count	1,283	1,046	237	1,379	1,154	225	7.5
	%	9.5	81.5	18.5	9.6	83.7	16.3	
Derwent Valley	Count	1,101	892	209	1,185	989	196	7.6
	%	8.1	81	19	8.3	83.5	16.5	
Durham	Count	1,946	1,462	484	2,047	1,618	429	5.2
	%	14.4	75.1	24.9	14.3	79	21	
East Durham	Count	1,899	1,494	404	2,083	1,687	396	9.7
	%	14.1	78.7	21.3	14.5	81	19	
East Durham Rural	Count	642	534	108	647	544	103	0.7
	%	4.8	83.1	16.9	4.5	84.1	15.9	
Great Aycliffe & Middridge	Count	788	580	209	842	631	211	6.8
	%	5.8	73.5	26.5	5.9	74.9	25.1	
Mid Durham	Count	857	711	146	922	778	145	7.6
	%	6.3	83	17	6.4	84.3	15.7	
Spennymoor	Count	553	448	106	577	480	97	4.4
	%	4.1	80.9	19.1	4	83.1	16.9	
Stanley	Count	715	562	153	717	590	127	0.3
	%	5.3	78.6	21.4	5	82.3	17.7	
Teesdale	Count	1,029	893	136	1,093	964	129	6.2
	%	7.6	86.8	13.2	7.6	88.2	11.8	
Weardale	Count	321	281	40	350	315	35	9.1
	%	2.4	87.6	12.4	2.4	89.9	10.1	
County Durham		100.0	80.3	19.7	100.0	81.0	19.0	6.2
England & Wales		-	84.4	15.6	-	84.9	15.1	2.3

Source: ONS Annual Business Inquiry 2005/07 and 2007/09

<sup>4</sup> The Annual Business Inquiry is a survey of employers with a two year delay to data release to allow for analysis and interpretation before being made available under license. At the time of writing this profile the latest dataset was for 2007/09.



## 7. Altogether Wealthier

### a(i). Business and Industry: Businesses and Employees<sup>5</sup>

- There was a small decrease in the number of employees in businesses in the county of 0.9% between 2005/07 and 2007/09.

Table 5b: Percentage of employees in businesses

		Employees in Businesses										% Change
		2005 to 2007					2007 to 2009					
Area		Total (% of county)	1-10	11-49	50-199	200 or more	Total (% of county)	1-10	11-49	50-199	200 or more	Total
3 Towns	Count	4,735	1,501	1,702	910	621	4,403	1,664	1,713	535	492	-7.0
Partnership	%	2.8	31.7	36	19.2	13.1	2.7	37.8	38.9	12.2	11.2	
4 Together	Count	3,834	1,015	1,331	1,007	481	3,409	1,189	1,207	543	472	-11.1
Partnership	%	2.3	26.5	34.7	26.3	12.5	2.1	34.9	35.4	15.9	13.8	
Great Aycliffe & Middridge	Count	11,678	1,911	3,743	3,318	2,706	11,808	2,002	4,045	3,410	2,349	1.1
	%	7.0	16.4	32.1	28.4	23.2	7.1	17	34.3	28.9	19.9	
Bishop Auckland and Shildon	Count	15,478	3,910	4,657	3,430	3,482	15,528	3,985	4,843	3,747	2,955	0.3
	%	9.3	25.3	30.1	22.2	22.5	9.4	25.7	31.2	24.1	19.0	
Chester-le-Street & District	Count	11,609	3,085	4,271	2,962	1,291	12,263	3,396	4,030	2,823	2,010	5.6
	%	6.9	26.6	36.8	25.5	11.1	7.4	27.7	32.9	23.0	16.4	
Derwent Valley	Count	12,607	2,808	3,473	3,639	2,686	12,337	3,023	3,332	3,698	2,278	-2.1
	%	7.5	22.3	27.6	28.9	21.3	7.5	24.5	27.0	30.0	18.5	
Durham	Count	39,694	4,815	8,013	8,299	18,568	40,063	5,211	6,997	8,291	19,565	0.9
	%	23.8	12.1	20.2	20.9	46.8	24.2	13.0	17.5	20.7	48.8	
East Durham	Count	27,861	5,217	6,922	6,858	8,864	28,305	5,545	6,835	6,689	9,239	1.6
	%	16.7	18.7	24.8	24.6	31.8	17.1	19.6	24.1	23.6	32.6	
East Durham Rural	Count	5,794	1,620	1,930	1,486	757	5,702	1,646	2,092	1,397	568	-1.6
	%	3.5	28.0	33.3	25.7	13.1	3.4	28.9	36.7	24.5	10.0	
Mid Durham	Count	7,195	2,051	2,618	1,983	543	6,625	2,193	2,810	1,624	0	-7.9
	%	4.3	28.5	36.4	27.6	7.5	4.0	33.1	42.4	24.5	0.0	
Spennymoor	Count	8,081	1,469	1,609	2,014	2,990	7,410	1,554	1,396	2,373	2,087	-8.3
	%	4.8	18.2	19.9	24.9	37.0	4.5	21.0	18.8	32.0	28.2	
Stanley	Count	8,343	1,868	2,675	2,572	1,229	7,600	1,913	2,233	2,072	1,381	-8.9
	%	5	22	32	31	15	5	25	29	27	18	
Teesdale	Count	8,047	2,566	2,443	1,229	1,809	7,945	2,804	2,246	1,182	1,714	-1.3
	%	4.8	31.9	30.4	15.3	22.5	4.8	35.3	28.3	14.9	21.6	
Weardale	Count	2,084	796	799	255	233	2,152	892	752	198	310	3.3
	%	1.2	38.2	38.3	12.3	11.2	1.3	41.5	35.0	9.2	14.4	
County Durham		100.0	20.7	27.6	23.9	27.7	100.0	21.3	27.6	23.4	27.7	-0.9
England & Wales		-	20.9	24.5	23.6	30.9	-	21.2	24.1	23.5	31.2	0.2

Source: ONS Annual Business Inquiry 2005/07 and 2007/09

<sup>5</sup> The Annual Business Inquiry is a survey of employers with a two year delay to data release to allow for analysis and interpretation before being made available under license. At the time of writing this profile the latest dataset was for 2007/09.

## 7. Altogether Wealthier

### a(ii). Business and Industry: Income

- 8 AAPs have a higher average household income than the county compared to 7 reported last year.

Table 6: Average household income

AAP/Area	Lower Quartile	Average (Median) Income	Upper Quartile
3 Towns Partnership	£17,100	£23,400	£31,800
4 Together	£17,100	£22,500	£29,000
Bishop Auckland and Shildon	£17,200	£22,100	£28,000
Chester-le-Street and District	£19,400	£26,800	£34,700
Derwent Valley	£19,100	£25,000	£33,100
Durham	£22,500	£31,100	£38,300
East Durham	£16,500	£20,900	£27,200
East Durham Rural	£19,100	£25,800	£35,300
Great Aycliffe & Middridge	£19,400	£24,300	£35,300
Mid Durham	£20,100	£27,900	£35,800
Spennymoor	£17,500	£23,400	£31,000
Stanley	£17,000	£22,000	£28,000
Teesdale	£20,700	£26,900	£34,400
Weardale	£19,050	£26,400	£32,300
<b>County Durham</b>	<b>£18,400</b>	<b>£24,500</b>	<b>£32,900</b>

Source: CACI 2012, DCC

### a(iii). Business and Industry: Vacancies

- In June 2012 there were 5 people claiming Job Seekers Allowance (ONS) in the county for each Jobcentre Plus advertised, notified vacancy in the county.

Table 7: Job Centre Plus 'Notified' vacancies by occupational group – June 2012

Occupational Group/Area	County Durham	North East	England & Wales
1 : Managers and Senior Officials	116	479	14,833
2 : Professional Occupations	219	619	12,905
3 : Associate Professional and Technical Occupations	449	2,449	58,993
4 : Administrative and Secretarial Occupations	249	953	19,604
5 : Skilled Trades Occupations	405	2,057	39,584
6 : Personal Service Occupations	282	2,415	56,533
7 : Sales and Customer Service occupations	387	3,108	70,580
8 : Process, Plant and Machine Operatives	550	2,951	70,654
9 : Elementary Occupations	593	2,803	81,690
<b>Total Notified Vacancies</b>	<b>3,250</b>	<b>17,834</b>	<b>425,376</b>

Source: NOMIS – June 2012 data, Jobcentre Plus 'Notified' vacancy returns – census ward data.

## 7. Altogether Wealthier

### b(i). Unemployment: Job Seekers Allowance Claimants

- In the county there were 15,545 people claiming JSA in June 2012 (ONS). This is equivalent to 4.7% of the working age population in the county (aged 16 to 64).
- The county has experienced higher levels of unemployment over the last three years than England & Wales on average.
- The county has seen a rise of 5.0% in JSA claimants where as in England & Wales it has fallen by 2.1% since July 2009.

Further current unemployment statistics for other areas and youth unemployment, are available on the Durham County Council website at: [Unemployment in County Durham](#). This page also includes a link to an InstantAtlas™ interactive report on unemployment, out of work benefits and worklessness for the previous three years.

Table 8: Three year change in JSA Claimants July 2009 to June 2012

Area/MSOA	Working Age Population <sup>1</sup>	July 2009 (base month)	Job Seekers Allowance - % WAG <sup>2</sup>			3 Year Average <sup>3</sup>	% Change <sup>4</sup>
			June 2010	June 2011	June 2012		
3 Towns Partnership	15,306	6.3	4.8	5.4	5.8	5.6	-8.2
4 Together Partnership	11,249	6.4	4.9	5.2	6.5	5.6	1.2
Bishop Auckland and Shildon	26,258	6.7	5.6	5.2	6.9	6.1	3.4
Chester-le-Street and District	33,914	3.9	3.4	3.6	4.0	3.8	2.6
Derwent Valley	27,772	4.1	3.0	3.2	3.9	3.5	-6.9
Durham	47,435	2.0	1.7	1.9	2.2	2.0	9.3
East Durham	60,042	5.1	4.7	4.9	6.1	5.3	20.0
East Durham Rural	16,543	3.7	3.0	3.2	4.1	3.5	12.8
Great Aycliffe and Middridge	16,693	5.4	3.8	4.4	4.9	4.5	-7.6
Mid Durham	22,123	4.2	3.3	3.5	4.2	3.7	0.2
Spennymoor	13,295	4.9	3.8	3.8	5.2	4.4	6.9
Stanley	20,452	6.0	5.3	5.2	6.7	6.0	11.0
Teesdale	15,180	2.8	2.4	2.1	2.4	2.5	-14.1
Weardale	5,086	3.1	2.8	2.3	2.7	2.9	-10.7
<b>County Durham</b>	<b>331,347</b>	<b>4.5</b>	<b>3.7</b>	<b>3.9</b>	<b>4.7</b>	<b>4.2</b>	<b>5.0</b>
<b>North East</b>	<b>1,699,700</b>	<b>5.0</b>	<b>4.6</b>	<b>4.8</b>	<b>5.4</b>	<b>5.0</b>	<b>8.3</b>
<b>England &amp; Wales</b>	<b>35,761,700</b>	<b>3.9</b>	<b>3.5</b>	<b>3.6</b>	<b>3.8</b>	<b>3.8</b>	<b>-2.1</b>

Source: ONS JSA Claimant Count, June 2012; ONS Mid 2010 Population estimates.

1. Working age is defined as those aged 16 to 64.

2. Expressed as a percentage of the resident working age population.

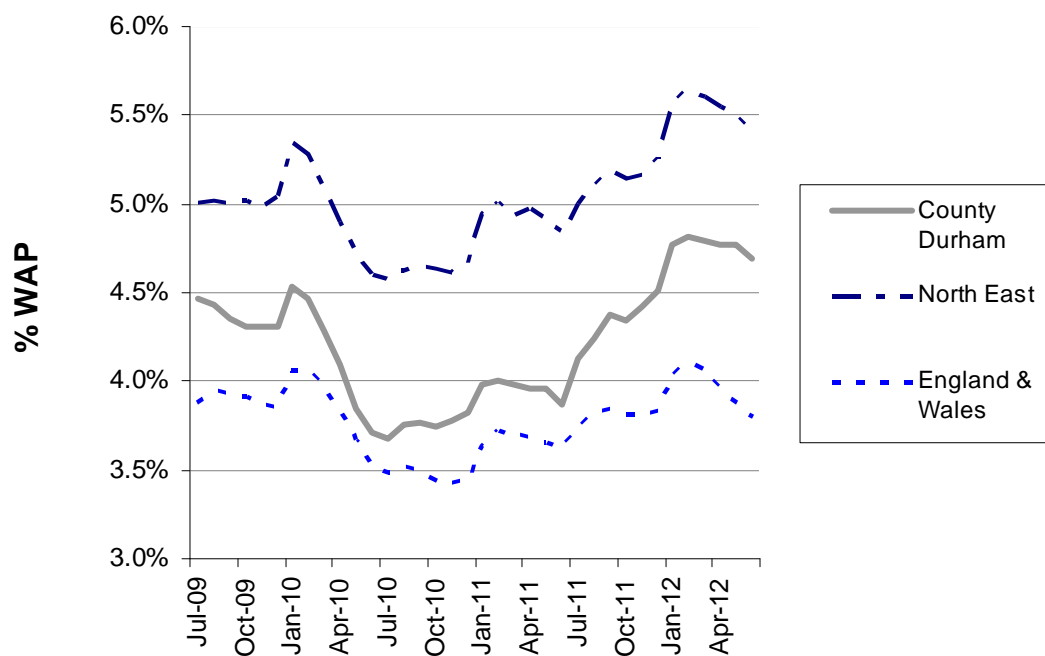
3. Average between July 2009 and June 2012.

4. Percentage change since July 2009.

## 7. Altogether Wealthier

### b(i). Unemployment: Job Seekers Allowance Claimants

Figure 2: Three year change in JSA Claimants July 2009 to June 2012



## 7. Altogether Wealthier

### b(ii). Unemployment: Duration

- A lower proportion of JSA claimants in the county have been claiming for more than a year than in the region or England & Wales.

Table 9a: Percentage of JSA claimants by duration of claim

	Less than 26 weeks		26 to 52 weeks		More than 52 weeks	
AAP/Area	% of Claimant Count	Count <sup>1</sup>	% of Claimant Count	Count <sup>1</sup>	% of Claimant Count	Count <sup>1</sup>
3 Towns Partnership	43.1	382	26.3	233	31.4	278
4 Together Partnership	47.0	345	29.3	215	23.2	170
Bishop Auckland and Shildon	45.1	820	27.0	490	27.5	500
Chester-le-Street & District	51.0	685	24.6	330	24.2	325
Derwent Valley	56.0	600	26.6	285	18.2	195
Durham	49.4	515	26.9	280	25.0	260
East Durham	48.5	1,770	26.5	969	24.8	906
East Durham Rural	49.0	335	26.4	180	24.4	166
Great Aycliffe & Middridge	58.7	485	18.8	155	21.8	180
Mid Durham	46.0	424	24.9	230	28.2	260
Spennymoor	50.3	351	24.5	171	26.3	183
Stanley	43.0	590	26.3	360	29.2	400
Teesdale	52.8	190	23.6	85	20.8	75
Weardale	49.9	69	27.0	37	19.3	27
<b>County Durham</b>	<b>48.6</b>	<b>7,560</b>	<b>26.0</b>	<b>4,040</b>	<b>25.2</b>	<b>3,915</b>
<b>North East</b>	<b>47.3</b>	<b>43,530</b>	<b>24.0</b>	<b>22,140</b>	<b>28.4</b>	<b>26,120</b>
<b>England &amp; Wales</b>	<b>52.0</b>	<b>706,420</b>	<b>21.7</b>	<b>295,345</b>	<b>26.1</b>	<b>355,040</b>

Source: Nomis June 2012: July 2012 data, ONS 2010 Estimates.

1. AAP figures estimated from census wards and may not sum to the county figure due to rounding error.

## 7. Altogether Wealthier

### b(ii). Unemployment: Age

- Over one third (33.4%) of JSA claimants in the county are young people (people aged under 25) which is higher when compared to the region and England & Wales. Further details are available in the next section on the percentage of the 18 to 24 age group who are claiming JSA.

Table 9b: Percentage of JSA claimants by age group

Area/MSOA	Aged under 25		Aged 25 to 49		Aged over 50	
	% of Claimant Count	Count <sup>1</sup>	% of Claimant Count	Count <sup>1</sup>	% of Claimant Count	Count <sup>1</sup>
3 Towns Partnership	33.6	298	50.9	451	15.1	134
4 Together Partnership	35.4	260	49.7	365	15.0	110
Bishop Auckland and Shildon	32.2	585	52.3	950	15.4	280
Chester-le-Street & District	32.4	435	52.8	710	15.3	205
Derwent Valley	32.2	345	52.7	565	16.3	175
Durham	31.2	325	52.8	550	16.8	175
East Durham	36.6	1,337	51.6	1,883	11.8	431
East Durham Rural	37.1	253	50.2	343	13.1	89
Great Aycliffe & Middridge	35.7	295	50.2	415	14.5	120
Mid Durham	29.2	269	54.2	499	16.2	150
Spennymoor	33.7	235	50.9	355	15.0	105
Stanley	31.7	435	51.8	710	15.7	215
Teesdale	26.4	95	55.6	200	18.1	65
Weardale	27.3	38	42.9	59	26.1	36
<b>County Durham</b>	<b>33.4</b>	<b>5,195</b>	<b>51.6</b>	<b>8,020</b>	<b>14.8</b>	<b>2,300</b>
<b>North East</b>	<b>31.2</b>	<b>28,735</b>	<b>53.3</b>	<b>49,055</b>	<b>15.2</b>	<b>13,995</b>
<b>England &amp; Wales</b>	<b>28.1</b>	<b>382,610</b>	<b>55.5</b>	<b>754,755</b>	<b>16.1</b>	<b>219,445</b>

Source: Nomis June 2012: July 2012 data, ONS 2010 Estimates.

1. AAP figures estimated from census wards and may not sum to the county figure due to rounding error.



## 7. Altogether Wealthier

### b(iii). Unemployment: Youth Unemployment in the 18 to 24 Population

- Youth unemployment in the county continues to be higher than in England & Wales with 5,160 young people claiming JSA in the county in June 2012 (ONS), or 9.8% of the 18 to 24 population in the county, (just under 1 in 10, 18 to 24 years olds).
- The county has seen a rise of 6.9% in youth unemployment since July 2009, which is a higher rise than in the region, while England & Wales has seen a fall in the number of young people claiming JSA over the same time period of 7.5%.

Table 10: Three year change in youth unemployment July 2009 to June 2012

Area/MSOA	18 to 24 Population	July 2009 (base month)	Job Seekers Allowance % - Young People <sup>1</sup>			3 Year Average <sup>2</sup>	% Change <sup>3</sup>
			June 2010	June 2011	June 2012		
3 Towns Partnership	1,949	15.0	12.2	15.3	15.0	15.0	0.0
4 Together Partnership	1,556	14.1	10.9	12.9	16.1	13.3	13.6
Bishop Auckland and Shildon	3,608	15.4	13.2	12.9	16.2	14.9	5.4
Chester-le-Street and District	3,954	10.4	8.6	10.2	11.0	10.5	6.1
Derwent Valley	3,364	11.6	7.0	8.5	10.3	9.3	-11.5
Durham	15,224	1.8	1.7	1.9	2.1	2.0	16.4
East Durham	8,635	12.8	11.5	12.7	15.4	13.9	20.4
East Durham Rural	2,293	9.2	6.9	8.0	11.0	9.1	20.2
Great Aycliffe and Middridge	2,182	13.3	9.2	11.2	13.5	11.5	1.7
Mid Durham	2,972	9.7	7.7	8.2	8.9	8.8	-8.7
Spennymoor	1,671	10.7	9.9	9.7	14.1	11.3	31.8
Stanley	2,743	14.9	12.4	13.5	15.9	15.1	6.1
Teesdale	1,731	7.8	5.5	5.5	5.5	6.4	-29.6
Weardale	482	9.8	6.6	6.7	7.8	8.9	-20.4
<b>County Durham</b>	<b>52,400</b>	<b>9.2</b>	<b>7.6</b>	<b>8.3</b>	<b>9.8</b>	<b>9.1</b>	<b>6.9</b>
<b>North East</b>	<b>274,100</b>	<b>9.8</b>	<b>8.4</b>	<b>9.2</b>	<b>10.4</b>	<b>9.8</b>	<b>6.2</b>
<b>England &amp; Wales</b>	<b>5,276,200</b>	<b>7.8</b>	<b>6.6</b>	<b>6.8</b>	<b>7.2</b>	<b>7.5</b>	<b>-7.5</b>

Source: ONS JSA Claimant Count, June 2012; ONS Mid 2010 Population estimates.

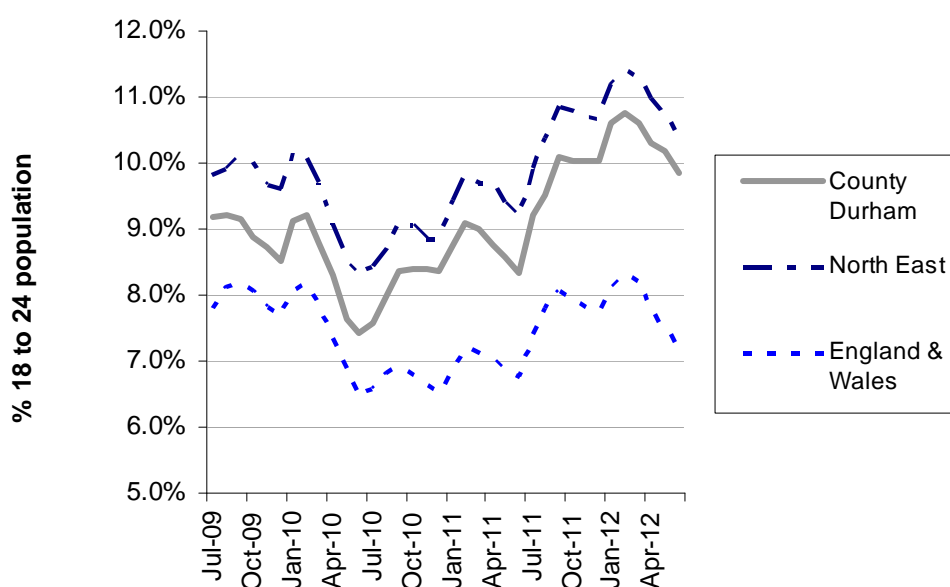
- Expressed as a percentage of the resident 18 to 24 population.
- Average between July 2009 and June 2012.
- Percentage change since July 2009.

## 7. Altogether Wealthier

### b(iii). Unemployment: Youth Unemployment in the 18 to 24 Population

- Between July 2009 and June 2010 youth unemployment showed a steady improvement mirroring the improving economic climate at the time. However by February 2012 youth unemployment increased to 10.7% suggesting that the economic problems in the last few years and the government's austerity measures are affecting the job prospects of young people in the county.

Figure 3: Change in the youth unemployment between July 2009 and June 2012



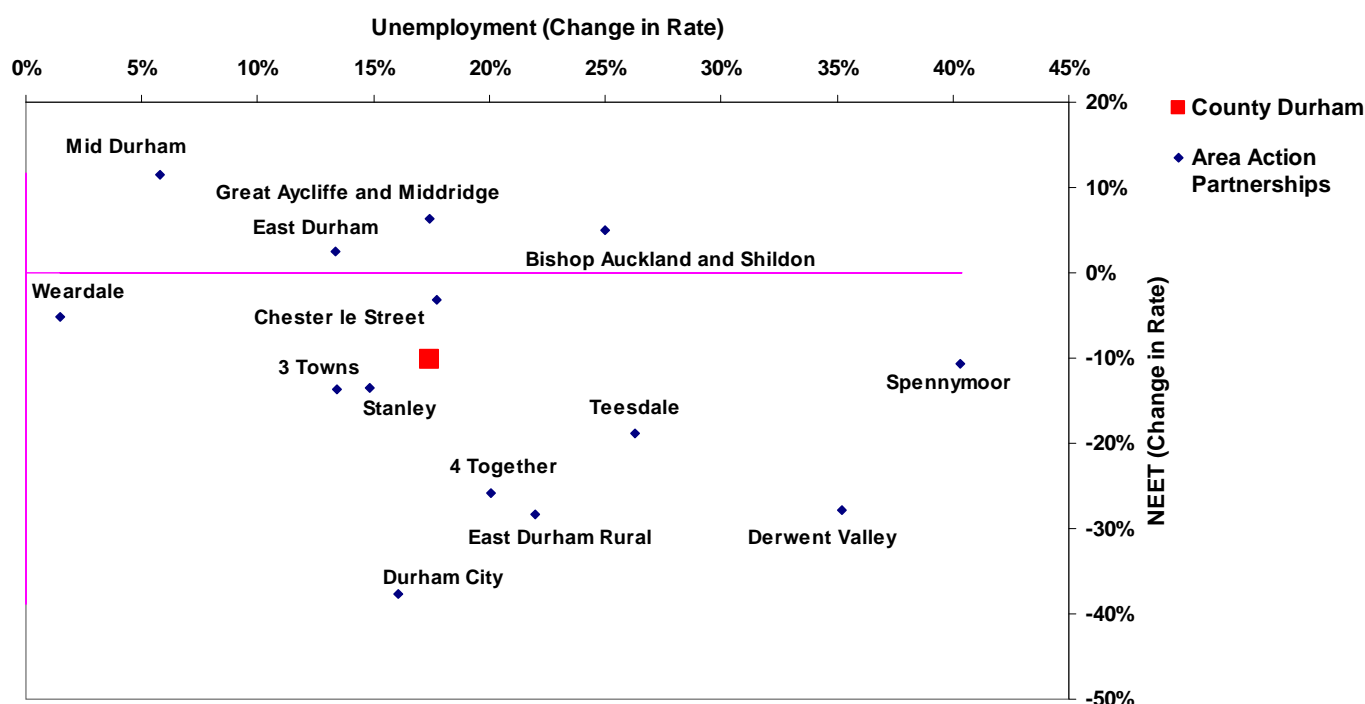
## 7. Altogether Wealthier

### b(iv). Youth Unemployment: NEETs and JSA Claimants April 2011 to April 2012

The chart below illustrates the change in the number of NEETs (aged 16 to 18) against the change in the JSA claimants (aged 18 to 24) in each AAP and the county, between April 2011 and April 2012. From this:

- The county has experienced a fall in its NEET rate, but a rise in JSA claimants aged 18 to 24 since April 2011. This suggests that an increasing number of young people (aged 16 to 18) are entering further education and apprenticeships as there are fewer employment opportunities in the county, which in turn causes youth unemployment to rise.
- The Bishop Auckland and Shildon, East Durham, Great Aycliffe & Middridge and Mid Durham AAPs have all seen rises in both the NEET and unemployment levels.

Figure 4: Change in the NEETs against youth unemployment April 2011/12



## 7. Altogether Wealthier

### c. Young People participating in Youth Work Programmes<sup>6</sup>

- There has been a 25.1% rise across the county in the proportion of young people participating in youth work programmes. This in part is due to fewer employment opportunities in the county as described in the youth unemployment section above and the 'Altogether Better for Children and Young People – NEETS' section below.
- 8 AAPs had higher rates of participation than the county overall.

Table 11: Young People aged 13-19 years participating in Youth Work Programmes – rate per 1,000 population

AAP/Area	Young People Youth Work Programmes per 1,000 population <sup>1</sup>			% change <sup>2</sup>
	2009-10	2010-11	2011-12	
3 Towns Partnership	139.4	177.3	354.6	154.4
4 Together Partnership	283.0	243.1	227.5	-19.6
Bishop Auckland and Shildon	158.8	200.7	98.1	-38.3
Chester-le-Street & District	55.4	159.0	100.7	81.8
Derwent Valley	192.4	269.7	227.7	18.4
Durham	126.0	188.6	206.0	63.4
East Durham	67.6	81.6	74.8	10.7
East Durham Rural	90.4	201.5	180.7	100.0
Great Aycliffe & Middridge	116.6	180.2	148.2	27.1
Mid Durham	116.6	201.9	161.4	38.4
Spennymoor	402.2	495.2	470.9	17.1
Stanley	130.5	113.7	121.2	-7.1
Teesdale	279.0	320.0	312.6	12.0
Weardale	250.3	212.0	176.9	-29.3
<b>County Durham</b>	<b>138.7</b>	<b>188.7</b>	<b>173.5</b>	<b>25.1</b>

Source: Durham County Council, ONS 2010 mid year population estimates.

1. Expressed as a rate per 1,000 population - teenagers aged 13 to 19.

2. Percentage change in rate since 2009/10.

<sup>6</sup> The key focus of youth work is to enable young people to develop their personal, social and educational skills and to reach their full potential. Youth Work programmes are delivered in partnership with voluntary sector organisations working in local communities throughout County Durham and are managed by the Youth Work Strategic Team. A young person will be classed as a youth work participant if they have attended a youth work programme for 12 hours or more.

## 7. Altogether Wealthier

### d. Key Benefits:

- There was a higher proportion of the population in the county claiming Incapacity Benefit/Severe Disablement Allowance (IB/SDA), Employment Support Allowance (ESA) and Disability Living Allowance (DLA) than in the region or England & Wales.
- Over a third of the retired population in the county are claiming Pension Credit.
- The higher percentage of DLA claimants provides some indication of the lasting effects of the county's industrial and mining past which is further supported by the higher number of people in the county claiming IB/SDA for respiratory and musculoskeletal reasons when compared with the nation (see page 41).
- IB/SDA and ESA are key components in calculating the percentage of the working age population claiming out of work benefits, (a measure of worklessness).

Table 12a: Key benefits claimed November 2011

AAP/Area	Benefit				
	Incapacity Benefit/SDA <sup>1</sup>	Employment Support Allowance <sup>1</sup>	Income Support <sup>2</sup>	Disability Living Allowance <sup>3</sup>	Pension Credit <sup>4</sup>
3 Towns Partnership	7.1	3.6	4.4	9.1	40.5
4 Together Partnership	7.6	3.6	4.5	9.3	39.5
Bishop Auckland and Shildon	8.3	3.8	5.6	10.0	42.3
Chester-le-Street and District	5.3	2.5	2.9	6.5	29.4
Derwent Valley	5.8	3.0	3.4	7.4	35.8
Durham	3.1	1.4	1.6	4.2	22.4
East Durham	9.6	3.9	5.0	10.6	34.2
East Durham Rural	6.0	2.4	2.9	7.6	27.7
Great Aycliffe & Middridge	6.4	3.0	4.0	9.2	35.4
Mid Durham	5.7	2.6	3.1	6.7	31.8
Spennymoor	7.2	2.8	3.9	8.4	38.0
Stanley	7.8	4.0	5.3	9.3	45.0
Teesdale	4.3	2.0	1.9	5.7	23.8
Weardale	4.6	1.3	1.9	5.3	23.3
<b>County Durham</b>	<b>6.5</b>	<b>2.9</b>	<b>3.7</b>	<b>7.9</b>	<b>33.2</b>
<b>North East</b>	<b>5.8</b>	<b>2.7</b>	<b>3.9</b>	<b>6.9</b>	<b>33.7</b>
<b>England &amp; Wales</b>	<b>4.3</b>	<b>2.1</b>	<b>3.2</b>	<b>5.3</b>	<b>26.0</b>

Sources: Department for Works and Pensions (DWP) Benefit Data November 2011, ONS Mid 2010 population estimates.

1. Expressed as a percentage of the working age population, aged 16 to 65 males and females

2. Expressed as a percentage of the 16+ population

3. Expressed as a percentage of the total population

4. Expressed as a percentage of the retired population (65+ males/females)

## 7. Altogether Wealthier

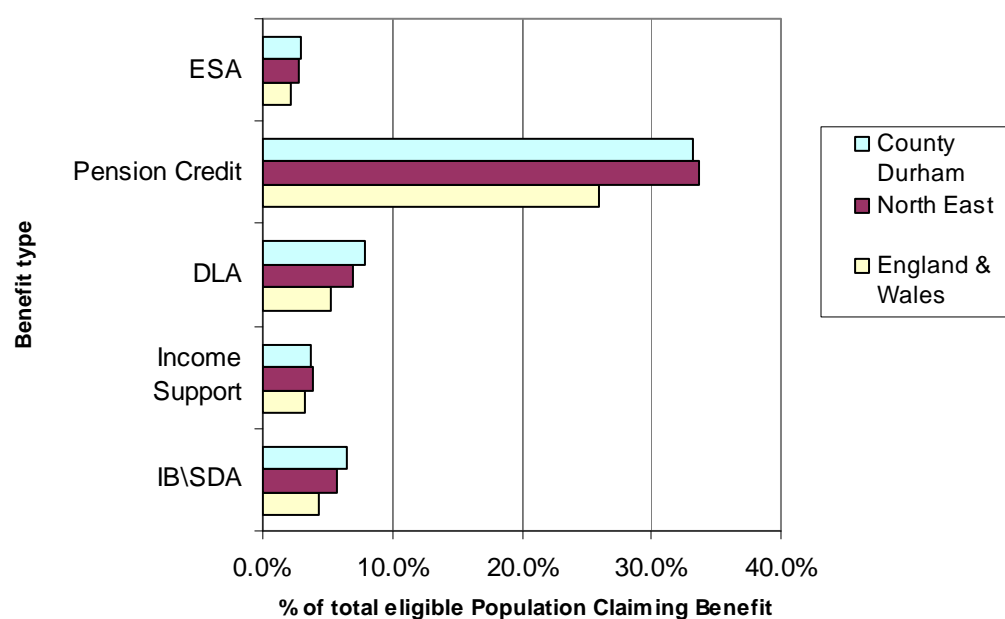
### d. Key Benefits:

Table 12b: Three year comparison of key benefits, November 2009 to November 2011

Benefit	Year	County Durham	North East	England & Wales
Incapacity Benefit / Severe Disablement Allowance <sup>1</sup>	2009	8.6	7.6	5.5
	2010	7.7	6.7	5.0
	2011	6.5	5.8	4.3
Employment Support Allowance Claimants <sup>1</sup>	2009	1.6	1.5	1.1
	2010	2.0	1.9	1.5
	2011	2.9	2.7	2.1
Income Support <sup>2</sup>	2009	4.4	4.7	3.8
	2010	4.1	4.4	3.6
	2011	3.7	3.9	3.2
Disability Living Allowance <sup>3</sup>	2009	7.8	6.8	5.1
	2010	7.9	6.8	5.2
	2011	7.9	6.9	5.3
Pension Credits <sup>4</sup>	2009	34.6	35.1	26.8
	2010	34.3	34.8	26.6
	2011	33.2	33.7	26.0

See table 12a above

Figure 5: Comparison of key benefit claimants





## 7. Altogether Wealthier

### e. Worklessness:

- A higher proportion of the working age population, (13.8%), in the county are claiming out of work benefits than in the region and England & Wales.
- The county has seen a smaller rise (1.3%), in the proportion of its working age population claiming out of work benefits over the last three years than both the region and England & Wales.
- 7 AAPs had higher levels of worklessness in November 2011 than the county, region and England & Wales.

Table 13: Comparison of 'Out of Work' benefit claimants (Worklessness) November 2008 to November 2011

Area/MSOA	November 2008 (base month)	Worklessness <sup>1</sup>			Average <sup>2</sup>	% change <sup>3</sup>
		Nov 2009	Nov 2010	Nov 2011		
3 Towns Partnership	<b>15.2</b>	16.7	16.1	16.4	16.6	7.3
4 Together Partnership	<b>17.2</b>	18.7	17.3	16.9	17.9	-1.9
Bishop Auckland and Shildon	<b>18.2</b>	19.5	17.7	18.6	18.9	2.4
Chester-le-Street & District	<b>11.3</b>	12.3	11.5	11.7	11.9	4.2
Derwent Valley	<b>11.6</b>	12.8	11.7	12.2	12.5	5.1
Durham	<b>6.6</b>	7.0	6.7	6.7	6.9	1.2
East Durham	<b>19.2</b>	20.0	19.0	19.1	19.6	-0.5
East Durham Rural	<b>12.4</b>	13.3	12.2	12.2	12.7	-1.7
Great Aycliffe & Middridge	<b>13.9</b>	15.2	13.6	14.2	14.5	2.3
Mid Durham	<b>11.9</b>	12.8	11.9	12.3	12.4	2.6
Spennymoor	<b>14.9</b>	15.9	14.1	14.5	15.1	-2.4
Stanley	<b>17.1</b>	18.3	17.5	18.1	18.0	5.8
Teesdale	<b>8.8</b>	9.6	8.6	8.7	9.1	-1.5
Weardale	<b>9.3</b>	10.4	9.1	8.5	9.5	-9.0
<b>County Durham</b>	<b>13.6</b>	<b>14.6</b>	<b>13.6</b>	<b>13.8</b>	<b>14.2</b>	<b>1.3</b>
<b>North East</b>	<b>12.9</b>	<b>14.1</b>	<b>13.4</b>	<b>13.6</b>	<b>13.8</b>	<b>5.6</b>
<b>England &amp; Wales</b>	<b>9.2</b>	<b>10.5</b>	<b>10.0</b>	<b>10.3</b>	<b>10.3</b>	<b>11.9</b>

Source: Nomis May 2012. November 2011 claimant data. ONS Mid 2010 population estimates.

1. Expressed as a percentage of the working age population, aged 16 to 65 males and females JSA, IB/SDA and ESA claimants.

2. Average proportion of the working age population claiming out of work benefits - November 2008 to November 2011.

3. Percentage change since November 2008.

## 7. Altogether Wealthier

### f. Fuel Poverty<sup>7</sup>:

- The proportion of estimated households in fuel poverty in the county is higher than the region and England.
- 7 AAPs have a higher proportion of households in fuel poverty than the county, region or England.

Table 14: Estimated households in fuel poverty

<b>AAP/Area</b>	<b>All Households</b>	<b>Fuel Poor Households</b>	<b>% Fuel Poor Households</b>
3 Towns Partnership	11,086	2,669	24.1
4 Together Partnership	8,321	2,075	24.9
Bishop Auckland and Shildon	18,984	4,402	23.2
Chester-le-Street & District	23,844	4,454	18.7
Derwent Valley	19,435	4,152	21.4
Durham	24,171	4,705	19.5
East Durham	40,666	9,580	23.6
East Durham Rural	10,975	2,406	21.9
Great Aycliffe & Middridge	11,594	1,989	17.2
Mid Durham	14,634	3,098	21.2
Spennymoor	9,309	1,994	21.4
Stanley	14,357	3,308	23.0
Teesdale	11,027	2,798	25.4
Weardale	3,823	1,083	28.3
<b>County Durham</b>	<b>222,226</b>	<b>48,713</b>	<b>21.9</b>
<b>North East<sup>1</sup></b>	<b>1,120,015</b>	<b>237,993</b>	<b>21.2</b>
<b>England<sup>1</sup></b>	<b>21,599,926</b>	<b>3,535,932</b>	<b>16.4</b>

Source: Department of Energy and Climate Change 2010. 2001 census based household estimates.

1. Household and fuel poverty numbers at region level come from the national fuel poverty statistics, 2010

---

<sup>7</sup> Definition: A household is considered to be in fuel poverty if it needs to spend more than 10 percent of its income on fuel for adequate heating (usually 21 degrees for the main living area, and 18 degrees for other occupied rooms).

## 7. Altogether Wealthier

### g. Council Tax Bands:

- A higher proportion of dwellings in the county are in Band A and B, combined, when compared to the region and England & Wales.
- All AAPs have a higher percentage of lower cost dwellings than England & Wales with 6 AAPs having a higher percentage than the county and region.

Table 15: Percentage of dwellings in each council tax band

Area/MSOA	% Dwelling Stock by Council Tax Band 2011					
	Total Dwelling Stock	Band A	Band B	Band C	Band D	Band E to I
3 Towns Partnership	11,663	67.8	9.5	8.9	9.0	4.9
4 Together Partnership	8,959	78.8	9.2	5.6	4.1	2.4
Bishop Auckland and Shildon	20,389	67.5	11.9	10.9	6.8	2.9
Chester-le-Street and District	19,856	50.5	1.4	21.9	12.0	14.2
Derwent Valley	17,257	56.8	6.2	15.9	9.3	11.8
Durham	25,360	35.9	18.4	19.7	13.2	12.8
East Durham	42,932	76.4	8.4	7.4	4.8	3.1
East Durham Rural	11,499	59.0	11.4	14.2	9.0	6.3
Great Aycliffe & Middridge	11,906	60.8	13.4	10.8	8.8	6.2
Mid Durham	15,100	60.3	12.3	12.1	7.6	7.7
Spennymoor	9,622	62.8	12.8	10.5	9.3	4.6
Stanley	14,551	73.0	6.3	10.1	5.8	4.9
Teesdale	11,880	29.1	23.0	16.5	14.2	17.3
Weardale	4,171	37.5	15.5	16.3	14.7	16.0
<b>County Durham</b>	<b>234,365</b>	<b>61.1</b>	<b>12.3</b>	<b>12.0</b>	<b>8.1</b>	<b>6.5</b>
<b>North East</b>	<b>1,179,386</b>	<b>55.8</b>	<b>14.9</b>	<b>14.5</b>	<b>7.9</b>	<b>6.8</b>
<b>England &amp; Wales</b>	<b>24,323,092</b>	<b>24.3</b>	<b>19.7</b>	<b>21.8</b>	<b>15.3</b>	<b>18.9</b>

Source: Communities and Local Government Neighbourhoods Statistics, 2011 data.

## 8. Altogether Better for Children and Young People

### a(i). Educational Attainment: Primary Schools

- A higher proportion of pupils attending schools in the county achieved Key Stage 2 English and Maths L4 and above and Maths L4 and above than England as a whole.
- A higher proportion of pupils attending schools in the AAP were eligible for free school meals than were eligible in England.

N.B. Not all pupils within the county attend schools in the county. Conversely, some pupils may travel from other areas to schools in the county.

Table 16a: Educational attainment in primary schools 2011

AAP/Area	Number of eligible pupils <sup>1</sup>	% English and maths L4 or above		% English L4 or above		% Maths L4 or above		% Eligible for free school meals
		L4+	L5	L4+	L5	L4+	L5	
3 Towns Partnership	212	76.7	19.8	80.9	25.6	83.0	37.2	28.8
4 Together Partnership	175	73.9	20.0	79.7	25.6	76.7	39.9	30.6
Bishop Auckland and Shildon	486	77.7	18.4	82.1	30.1	80.6	30.1	29.0
Chester le Street & District	3,803	80.0	26.6	85.0	37.1	85.6	37.7	15.9
Derwent Valley	420	79.7	19.3	85.3	28.3	83.3	33.3	19.9
Durham	531	83.7	24.0	88.3	30.4	88.8	35.2	18.0
East Durham	982	73.5	16.5	80.8	23.8	80.3	30.1	27.5
East Durham Rural Corridor	243	80.5	26.6	89.0	35.2	84.3	44.7	18.9
Great Aycliffe & Middridge	287	75.3	17.2	81.8	26.1	81.1	29.8	20.8
Mid Durham Rural	311	79.5	25.8	83.6	36.1	84.2	38.6	19.9
Spennymoor	222	77.3	20.7	81.2	29.2	85.2	41.3	20.5
Stanley	310	77.5	12.9	82.9	17.3	83.8	28.3	35.6
Teesdale	190	85.0	30.7	87.4	40.3	87.3	48.0	11.7
Weardale	67	91.3	23.3	92.3	33.7	94.3	52.7	6.0
<b>County Durham</b>	<b>4,998</b>	<b>77.0</b>	<b>21.0</b>	<b>82.0</b>	<b>29.0</b>	<b>82.0</b>	<b>35.0</b>	<b>23.0</b>
<b>England - all schools</b>	<b>555,375</b>	<b>74.0</b>	<b>21.0</b>	<b>82.0</b>	<b>29.0</b>	<b>80.0</b>	<b>35.0</b>	<b>19.2</b>

Source: Department for Education 2011 Results.

County and AAP figures do not include independent schools.

1. Number of pupils eligible for Key Stage 2 assessment in the 2010/2011 school year aged 10 or 11.

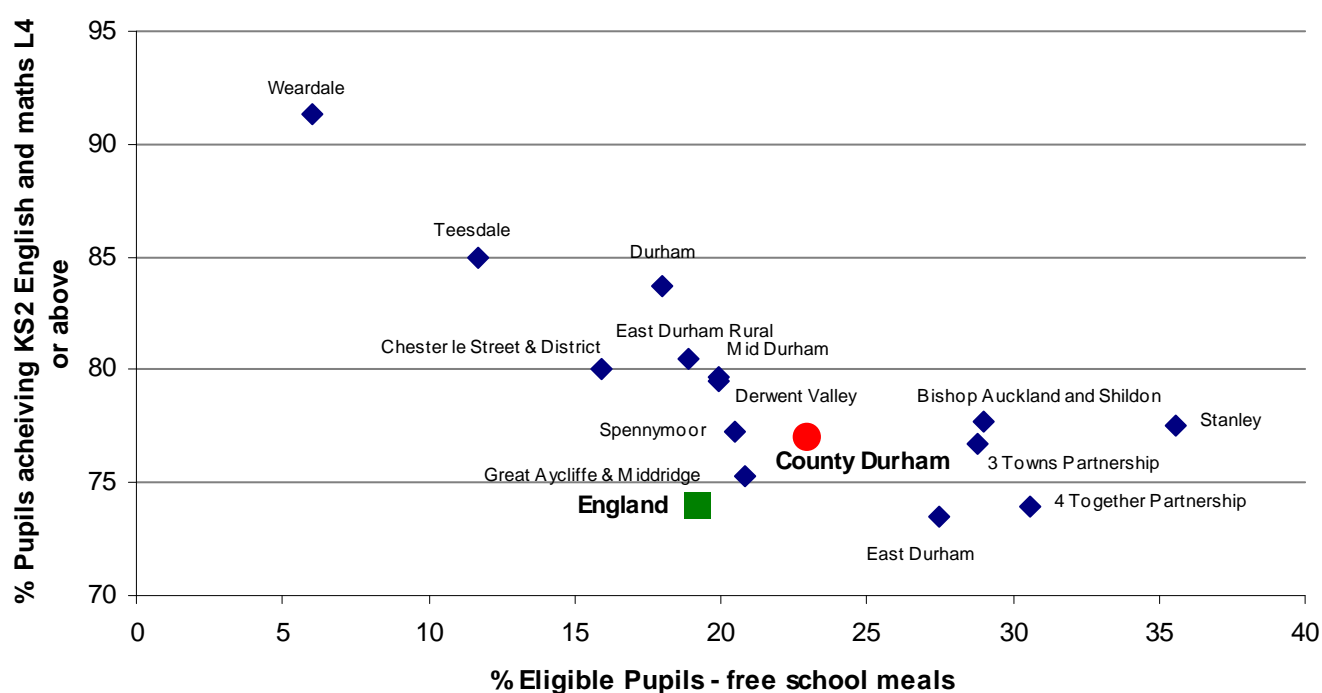
## 8. Altogether Better for Children and Young People

### a(i). Educational Attainment: Primary Schools

The chart below illustrates the percentage of primary school pupils eligible for free school meals by AAP against the percentage of children attaining Key Stage 2 English and Maths L4+ in each AAP and the county in the 2010/11 academic year. From this the graph suggests:

- There appears to be a social gradient associated with these results because of the correlation between % pupils attaining Key Stage 2 English and Maths L4 and above and % pupils eligible for free school meals in primary schools, i.e. areas with higher numbers of free school meal pupils tend to have lower levels of attainment.
- There is also a correlation with AAPs with higher levels of deprivation and child poverty. The 5 AAPs with the highest levels of FSM eligibility are also the AAPs with the highest proportions of children in families in poverty and local populations living in the top 30% most deprived areas nationally.

Figure 6: Primary Schools - Eligibility for free school meals against Key Stage 2 English and Maths L4 and above attainment 2011



## 8. Altogether Better for Children and Young People

### a(i). Educational Attainment: Primary Schools by Pupil place of residence

- A higher proportion of pupils living in the county achieved Key Stage 2 English and Maths L4 and above and Maths L4+ than in England.

N.B. Not all pupils within the county attend schools in the county. Conversely, some pupils may travel from other areas to schools in the county.

Table 16b: Primary school educational attainment by area/AAP (by pupil residence) 2011

AAP <sup>2</sup> /Area	Number of eligible pupils <sup>1</sup>	English and Maths L4 or above		English L4 or above		Maths L4 or above	
		Count	%	Count	%	Count	%
3 Towns Partnership	234	180	76.8	188	80.2	196	83.6
4 Together Partnership	183	125	68.3	139	76.0	133	72.7
Bishop Auckland and Shildon	471	357	76.8	382	82.2	383	81.4
Chester-le-Street & District	546	431	79.7	463	86.3	459	86.0
Derwent Valley	397	309	77.8	332	83.6	324	81.6
Durham	486	416	85.6	435	89.5	439	90.3
East Durham	970	695	71.6	764	78.8	766	79.0
East Durham Rural	239	192	80.3	208	87.0	204	85.1
Great Aycliffe & Middlesbrough	276	194	70.3	211	76.4	215	77.9
Mid Durham	359	278	77.5	299	83.4	297	82.8
Spennymoor	208	144	69.3	155	74.6	162	78.1
Stanley	341	260	76.2	274	80.4	287	84.2
Teesdale	245	200	81.6	210	85.7	216	88.2
Weardale	58	48	82.9	49	84.9	50	86.6
<b>County Durham<sup>2</sup></b>	<b>5,013</b>	<b>3,829</b>	<b>76.4</b>	<b>4109</b>	<b>82.0</b>	<b>4131</b>	<b>82.4</b>
<b>England - all schools</b>	<b>555,375</b>	<b>-</b>	<b>74.0</b>	<b>-</b>	<b>82.0</b>	<b>-</b>	<b>80.0</b>

Source: Department for Education 2011 results

1. Number of pupils eligible for Key Stage 2 assessment in the 2010/2011 school year aged 10 or 11.

2. Sum of the AAPs does not match the county total as the AAP figures are based upon MSOA data. Several MSOAs overlap adjacent AAPs.

## 8. Altogether Better for Children and Young People

### b(i). Educational Attainment: Secondary Schools

- There were higher levels of achievement by pupils attending secondary schools in the county for 5+A\*-C GCSE's and 5+ A\*-C (including English and maths) than in England.
- A higher proportion of pupils in attending schools in the county were eligible for free meals compared to England.

N.B. Not all pupils within the county attend schools in the county. Conversely, some pupils may travel from other areas to schools in the county.

Table 17a: Educational attainment in secondary schools 2011

AAP/Area	Number of pupils on school roll	% Pupils with SEN <sup>1</sup> or on School Action Plus <sup>2</sup>	Number of pupils at the end of KS4	% 5+ A*-C GCSE's including English and Maths	% 5+ A*-C GCSE's	% Eligible for free school meals
3 Towns Partnership	747	16.6	136	54.0	100.0	23.8
4 Together Partnership	622	12.4	116	47.0	87.0	25.9
Bishop Auckland and Shildon	3,244	15.9	573	58.0	93.0	24.3
Chester-le-Street & District	3,347	13.1	599	65.5	95.5	17.0
Derwent Valley	1,305	12.1	239	65.5	94.0	20.6
Durham	6,121	7.1	751	67.4	89.2	14.4
East Durham	5,160	16.1	1,018	54.7	88.0	26.3
East Durham Rural	851	8.6	166	66.0	98.0	16.3
Great Aycliffe & Middridge Partnership	1,599	14.4	333	51.0	81.5	20.6
Mid Durham	1,836	10.4	300	73.5	98.0	21.9
Spennymoor	1,304	8.9	237	59.0	85.5	22.2
Stanley	1,754	16.2	391	54.7	88.3	25.4
Teesdale	1,392	12.7	131	72.0	99.0	9.4
Weardale	741	12.3	136	55.0	88.0	15.4
<b>County Durham</b>	<b>30,023</b>	<b>12.6</b>	<b>5,126</b>	<b>60.2</b>	<b>91.8</b>	<b>20.6</b>
<b>England</b>	<b>3,262,633</b>	<b>8.5</b>	<b>566,932</b>	<b>58.7</b>	<b>80.5</b>	<b>15.9</b>

Source: Department for Education 2011 Results.

County and AAP figures do not include independent schools.

1. SEN - Statement of Educational Need.

2. School Action Plus - The young person has help, within or outside of school with an external agency.

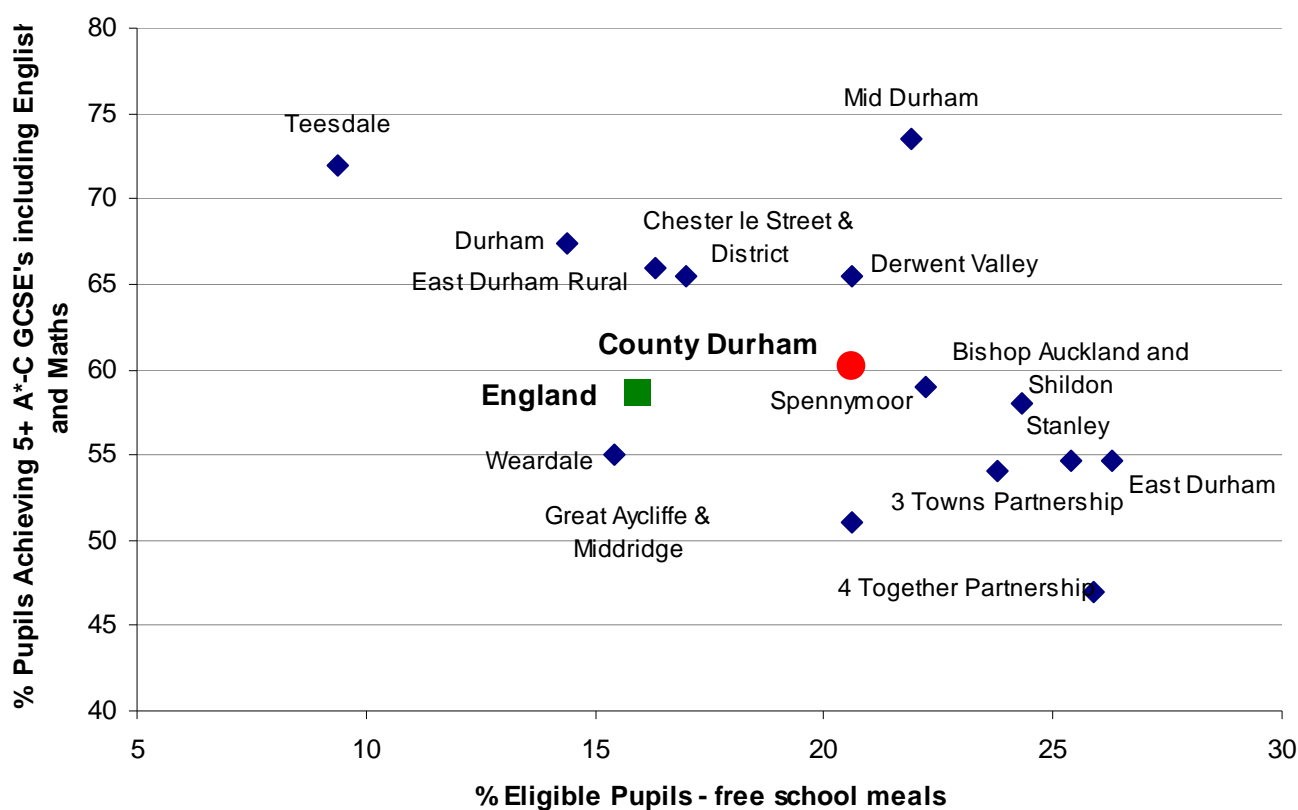
## 8. Altogether Better for Children and Young People

### b(i). Educational Attainment: Secondary Schools

The chart below illustrates the percentage of secondary school pupils eligible for free school meals by AAP against the percentage of children attaining 5 or more A\*-C GCSEs including English and Maths in each AAP and the county in the 2010/11 academic year. From this the graph suggests:

- As with primary schools there appears to be a social gradient associated with these results because of the correlation between % pupils attaining 5+ A\*-C GCSEs including English and Maths and % pupils eligible for free school meals (FSMs) in secondary schools, i.e. areas with higher numbers of free school meal pupils tend to have lower levels of attainment. In addition the 5 AAPs with the highest levels of FSM eligibility are the same.

Figure 7: Secondary Schools - Eligibility for free school meals against 5 or more A\*-C GCSEs including English and Maths 2011



Continued on next page.



## 8. Altogether Better for Children and Young People

### b(i). Educational Attainment: Secondary Schools

Continued from previous page.

- Mapping these indicators against each other by geographical area also highlights any significant differences within areas. In this case the Mid Durham AAP appears as an outlier on the graph with both high attainment levels and FSM eligibility. The Mid Durham AAP has 2 secondary schools with very different levels of need/attainment as detailed in the Mid Durham AAP Profile as shown by the table below extracted from the profile:

Mid Durham AAP Profile - Table 18: Educational attainment in secondary schools 2011

School/Area	Number of pupils on school roll	% Pupils with SEN <sup>1</sup> or on School Action Plus <sup>2</sup>	Number of pupils at the end of KS4	% 5+ A*-C GCSE's including English and Maths	% 5+ A*-C GCSE's	% Eligible for free school meals	Ofsted date	Ofsted score <sup>3</sup>
Durham Community Business College for Technology and Enterprise	419	12.9	88	66.0	97.0	32.9	Apr-11	3
St Bede's Catholic Comprehensive School and Sixth Form College, Lanchester	1,417	7.8	212	81.0	99.0	10.8	Jan-09	1
<b>Mid Durham</b>	<b>1,836</b>	<b>10.4</b>	<b>300</b>	<b>73.5</b>	<b>98.0</b>	<b>21.9</b>	-	-
<b>County Durham</b>	<b>30,023</b>	<b>12.6</b>	<b>5,126</b>	<b>60.2</b>	<b>91.8</b>	<b>20.6</b>	-	-
<b>England</b>	<b>3,262,633</b>	<b>8.5</b>	<b>566,932</b>	<b>58.7</b>	<b>80.5</b>	<b>15.9</b>	-	-

Source: Department for Education 2011 results, Ofsted. County and AAP figures do not include independent schools.

1. SEN - Statement of Special Educational Needs.

2. School Action Plus - The young person has help, within or outside of school with an external agency.

3. Ofsted score: 1 = Outstanding, 2 = Good, 3 = Satisfactory, 4 = Inadequate.

## 8. Altogether Better for Children and Young People

### b(ii). Educational Attainment: Secondary Schools by Pupil place of residence

- Levels of attainment by pupils living in the county are slightly lower when compared to pupils attending schools in the county, but are still higher than the England results.

N.B. Not all pupils within the county attend schools in the county. Conversely, some pupils may travel from other areas to schools in the county.

Table 17b: Secondary school educational attainment by area/AAP (by pupil residence) 2011

AAP/Area	Number of pupils at the end of KS4	5+ A*-C GCSE's including English and maths		5+ A*-C GCSE's	
		Count	%	Count	%
3 Towns Partnership	364	201	55.2%	325	89.3%
4 Together Partnership	282	151	53.5%	246	87.2%
Bishop Auckland and Shildon	499	281	56.3%	436	87.4%
Chester-le-Street & District	630	405	64.3%	580	92.1%
Derwent Valley	516	350	67.8%	475	92.1%
Durham	623	432	69.3%	555	89.1%
East Durham	1030	560	54.4%	888	86.2%
East Durham Rural	415	239	57.6%	361	87.0%
Great Aycliffe & Middridge	346	183	52.9%	279	80.6%
Mid Durham	505	348	68.9%	457	90.5%
Spennymoor	324	176	54.3%	273	84.3%
Stanley	437	243	55.6%	389	89.0%
Teesdale	264	186	70.5%	254	96.2%
Weardale	262	151	57.6%	233	88.9%
<b>County Durham<sup>1</sup></b>	<b>5364</b>	<b>3223</b>	<b>60.1%</b>	<b>4752</b>	<b>88.6%</b>

Source: Department for Education 2011 Results.

1. Sum of the AAPs does not match the county total as the AAP figures are based upon MSOA data. Several MSOAs overlap adjacent AAPs.

## 8. Altogether Better for Children and Young People

### c. Educational attainment: Key Stage 5 A/AS level

- Two out of nine AAPs achieved higher average point scores per student than England, (published results only).

Table 18: Key Stage 5 scores by AAP

AAP/Area	General and Applied A/AS or Equivalent Achievement			
	Number of students aged 16-18	Number at end of A/AS or equivalent study in 2010/11	Average point score per student	Average point score per examination entry
4 Together	N/A	N/A	N/A	N/A
Bishop Auckland and Shildon	1438	310	607.4	210.3
Chester le Street and District	566	234	688.3	187.9
Derwent Valley	630	54	496.6	197.3
Durham	4464	1292	749.1	223.8
East Durham	1608	283	444.1	190.6
Great Aycliffe & Middridge	N/A	N/A	N/A	N/A
Mid Durham	308	140	784.9	211.6
Spennymoor	113	28	612.3	207.8
Teesdale	157	57	708.2	195.9
Weardale	99	40	611.5	206.6
<b>County Durham</b>	<b>9,517</b>	<b>2,491</b>	<b>671.9</b>	<b>208.0</b>
<b>England</b>	<b>-</b>	<b>-</b>	<b>728.3</b>	<b>213.1</b>

Source: Department for Education 2011 Results. County and AAP figures do not include independent schools.

N/A: Figures not available.

## 8. Altogether Better for Children and Young People

### d. Not in Education, Employment or Training - NEETs:

- There was a fall in the county's NEETs of 10.1% between April 2011 and April 2012.
- This suggests that increasing numbers of young people (aged 16 to 18) are entering further education and apprenticeships as there are fewer job opportunities in the county.

Table 19: NEETs in the 16-18 age group

AAP/Area	Adjusted % <sup>1</sup>		% Change <sup>2</sup>
	April 2011	April 2012	
3 Towns Partnership	12.6	10.9	-13.7
4 Together Partnership	12.7	9.1	-28.4
Bishop Auckland and Shildon	11.7	12.3	5.0
Chester-le-Street & District	7.6	7.3	-3.2
Derwent Valley	6.8	4.9	-27.8
Durham	8.0	5.0	-37.6
East Durham	8.6	8.8	2.6
East Durham Rural	8.9	6.6	-25.8
Great Aycliffe & Middridge	9.6	10.2	6.3
Mid Durham	7.6	8.5	11.4
Spennymoor	9.9	8.9	-10.6
Stanley	11.4	9.9	-13.5
Teesdale	5.1	4.1	-18.8
Weardale	4.8	4.5	-5.1
<b>County Durham</b>	<b>9.1</b>	<b>8.2</b>	<b>-10.1</b>

Source: Department for Education 2012 (DfE).

1. Adjusted NEETs is in line with former National Indicator NI 117 16-18 year olds who are not in education, employment or training (NEET). A description and the method of calculation of this indicator can be found on the [Audit Commission website](#).

2. Percentage change between April 2011 and April 2012.

## 8. Altogether Better for Children and Young People

### e. School Absences:

- Total absences from schools in the county were similar to those in the region and England.
- Absences from schools across the county have fallen by 6.4% over the last 3 years which is a more rapid fall than across the region.

Table 20: Total school absences by pupil place of residence

Area/MSOA	Percentage of total school absences in all schools by pupil residency				
	2008/09	2009/10	2010/11	3 year average	% change
3 Towns Partnership	6.1	6.0	5.8	6.0	-4.7
4 Together Partnership	6.7	6.1	6.3	6.3	-6.7
Bishop Auckland and Shildon	6.4	6.5	6.3	6.4	-1.7
Chester-le-Street & District	5.4	5.5	5.4	5.4	-1.2
Derwent Valley	5.8	5.8	5.8	5.8	0.8
Durham	5.7	5.3	5.1	5.4	-10.2
East Durham	6.5	6.3	6.4	6.4	-0.9
East Durham Rural	6.3	6.0	5.8	6.0	-8.4
Great Aycliffe & Middridge	6.5	5.9	5.9	6.1	-8.9
Mid Durham	6.4	6.0	5.7	6.0	-11.4
Spennymoor	6.3	5.6	5.4	5.7	-14.6
Stanley	6.9	6.7	6.9	6.8	-1.1
Teesdale	5.1	5.1	4.8	5.0	-5.2
Weardale	5.6	5.9	5.4	5.7	-3.9
<b>County Durham</b>	<b>6.3</b>	<b>5.9</b>	<b>5.8</b>	<b>6.0</b>	<b>-6.4</b>
<b>North East</b>	<b>6.4</b>	<b>6.2</b>	<b>6.1</b>	<b>6.2</b>	<b>-4.4</b>
<b>England</b>	<b>6.3</b>	<b>6.0</b>	<b>5.8</b>	<b>6.0</b>	<b>-7.6</b>

Source: Department for Education (DfE) 2012. Pupils by residency.

Calculated using the total number of possible pupil sessions during the academic year.

## 8. Altogether Better for Children and Young People

### g. Child Poverty<sup>8</sup>:

- A higher proportion of all children in 2009 in the county were estimated to be in poverty than across England (22.8%).
- Only Durham and Mid Durham AAPs experienced an overall decrease in 'child poverty' between 2007 and 2009.
- The county has seen a larger increase in 'child poverty' (3.9%) than the region (0.8%), while England has seen a fall of 1.3%.

Table 21: Child Poverty 2007 to 2009

AAP/Area	% Children in families in receipt of CTC (<60% median income) or IS/JSA <sup>1</sup>						% change 2007 to 2009	
	2007		2008		2009		Under 16	All Children <sup>2</sup>
	Under 16	All Children <sup>2</sup>	Under 16	All Children <sup>2</sup>	Under 16	All Children <sup>2</sup>		
3 Towns Partnership	26.9	26.2	27.0	26.7	28.4	28.0	5.4	7.0
4 Together Partnership	27.5	26.3	26.7	25.5	28.2	27.6	2.9	4.9
Bishop Auckland and Shildon	29.8	28.6	29.9	28.7	30.4	29.5	2.0	3.1
Chester-le-Street and District	16.4	15.8	16.5	15.8	17.9	16.9	8.8	7.0
Derwent Valley	17.7	17.1	17.4	17.0	18.2	17.9	2.8	4.8
Durham	15.3	14.2	14.1	13.2	14.8	13.8	-3.2	-2.6
East Durham	28.5	27.6	28.5	27.5	28.9	28.2	1.2	2.1
East Durham Rural	18.9	18.4	19.0	18.7	19.5	18.8	3.0	1.9
Great Aycliffe & Middridge	22.1	21.6	22.7	21.6	25.0	23.9	13.5	10.9
Mid Durham	20.9	20.1	21.0	19.9	20.8	20.1	-0.4	-0.1
Spennymoor	22.4	21.8	21.6	21.0	23.6	22.9	5.1	5.1
Stanley	30.2	29.2	30.3	29.1	32.6	30.8	7.9	5.8
Teesdale	14.0	13.5	14.4	14.0	14.2	13.9	0.9	2.9
Weardale	10.5	10.8	11.9	12.2	10.8	11.6	2.6	7.3
<b>County Durham</b>	<b>22.8</b>	<b>21.9</b>	<b>22.7</b>	<b>21.8</b>	<b>23.5</b>	<b>22.8</b>	<b>3.2</b>	<b>3.9</b>
<b>North East</b>	<b>25.3</b>	<b>24.3</b>	<b>25.0</b>	<b>24.0</b>	<b>25.4</b>	<b>24.5</b>	<b>0.1</b>	<b>0.8</b>
<b>England</b>	<b>22.4</b>	<b>21.6</b>	<b>21.6</b>	<b>20.9</b>	<b>21.9</b>	<b>21.3</b>	<b>-2.4</b>	<b>-1.3</b>

Source: Her Majesty's Revenues and Customs 2012.

1. CTC: Child Tax Credits, IS/JSA: Income Support/ Job Seekers Allowance.

2. All dependent children under the age of 20.

<sup>8</sup> **Definition:** Former National Indicator 116: The proportion of children in poverty. The proportion of children living in families in receipt of out of work benefits or in receipt of Child Tax Credit (CTC) where their reported income is less than 60 per cent of median income (as a proportion of children receiving Child Benefit).

## 9. Altogether Healthier

### a. Healthy Lifestyles

The following table is an extract from the 2011 [County Durham Joint Strategic Needs Assessment](#) at the MSOA geography, therefore figures for the AAPs are not available.

- Levels of obesity and adult smoking in the county are higher than the England average and a lower proportion of the adult population eat healthily compare to those across England.
- Indications at the MSOA level suggest that there are higher levels of adult binge drinking in more affluent areas. Further information is available in the separate area [Action Partnership Profiles](#).

Table 22: Healthy Lifestyles

Area/MSOA	% obese children <sup>1</sup>	% obese adults <sup>2</sup>	% adults who smoke <sup>2</sup>	% binge drinking adults <sup>2</sup>	% healthy eating adults <sup>2</sup>
County Durham	20.6	28.6	28.2	31.6	21.4
England	18.7	24.2	22.2	-	28.4

Source: National Child Measurement Programme, Health Survey for England.

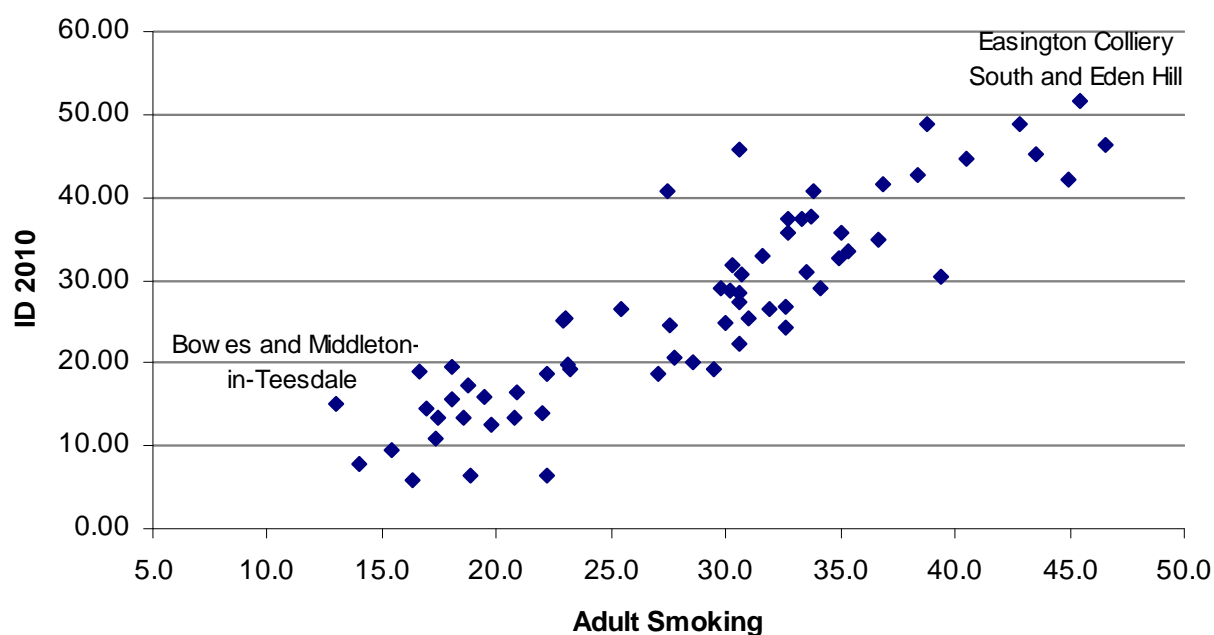
1. Percentage of obese children (Year six), 2007/08-2009/10.

2. Percentage of adults (modelled estimate), 2006-2008.

~ Suppressed data.

- There is a strong correlation (0.89) between levels of adult smoking and deprivation, meaning areas with higher levels of deprivation have higher proportions of the adults smoking.

Figure 8: Healthy Lifestyles – Adult Smoking against Index of Deprivation 2010 by MSOA

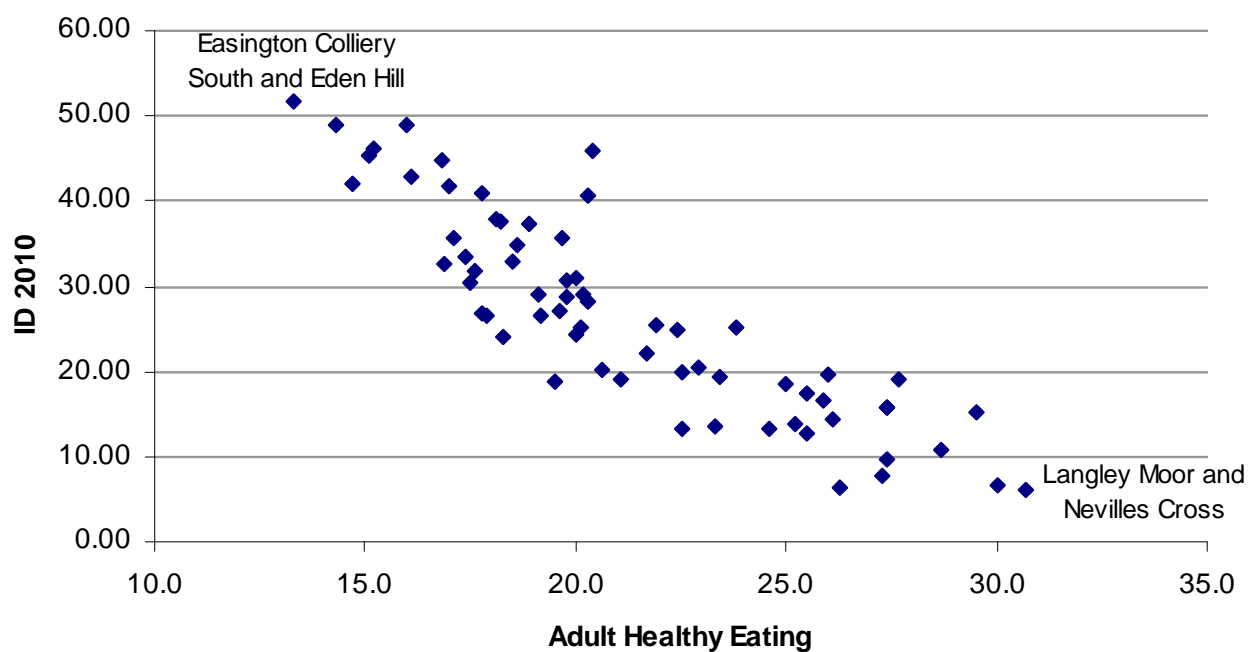


## 9. Altogether Healthier

### a. Healthy Lifestyles

- There is a high negative correlation (-0.88) between the proportion of adults eating healthily and levels of deprivation in areas, meaning areas with lower levels of deprivation have higher proportions of adults eating more healthily.

Figure 9: Healthy Lifestyles – Adult Healthy Eating against Index of Deprivation 2010 by MSOA





## 9. Altogether Healthier

### b. Incapacity Benefit/Severe Disablement Allowance (IB/SDA): Reasons for claiming

- A higher percentage of the working age population (aged 16 to 64) in the county are claiming IB/SDA than in the region or England & Wales, for all reasons.
- The proportion of claimants in the county claiming for all reasons is higher than across England.

Table 23: Reasons for claiming Incapacity Benefit/Severe Disablement Allowance (as a percentage of the working age population)

Area	Mental	Nervous System	Respiratory or Circulatory	Musculo-skeletal	Injury, Poisoning	Other	Total Claimants
3 Towns Partnership	2.5	0.4	0.6	1.6	0.2	1.8	7.1
4 Together Partnership	2.6	0.5	0.5	1.7	0.4	1.9	7.6
Bishop Auckland and Shildon	2.9	0.6	0.5	2	0.5	1.9	8.3
Chester-le-Street & District	2.3	0.4	0.3	1	0.3	1.0	5.3
Derwent Valley	2.4	0.3	0.3	1.3	0.4	1.1	5.8
Durham	1.3	0.2	0.2	0.5	0.2	0.7	3.1
East Durham	3.6	0.6	0.6	2	0.7	2.2	9.6
East Durham Rural	2.2	0.4	0.5	1.4	0.3	1.3	6.0
Great Aycliffe & Middridge	2.4	0.4	0.4	1.4	0.3	1.3	6.4
Mid Durham	2.1	0.4	0.5	1.3	0.3	1.2	5.7
Spennymoor	2.4	0.4	0.5	1.6	0.5	1.7	7.2
Stanley	3.1	0.5	0.6	1.6	0.3	1.6	7.8
Teesdale	1.6	0.4	0.4	1	0.2	0.8	4.3
Weardale	1.3	0.6	0.2	1.3	0.1	1.1	4.6
<b>County Durham</b>	<b>2.4</b>	<b>0.4</b>	<b>0.4</b>	<b>1.4</b>	<b>0.4</b>	<b>1.4</b>	<b>6.5</b>
<b>North East</b>	<b>2.3</b>	<b>0.4</b>	<b>0.4</b>	<b>1.2</b>	<b>0.3</b>	<b>1.2</b>	<b>5.8</b>
<b>England &amp; Wales</b>	<b>1.9</b>	<b>0.3</b>	<b>0.3</b>	<b>0.7</b>	<b>0.2</b>	<b>0.9</b>	<b>4.3</b>

Source: Nomis, June 2012, November 2011 data, ONS Mid 2010 population estimates.

WAP is now defined as all people aged between 16 and 64 (previously 16/64 males and 16/59 females).

## 9. Altogether Healthier

The following tables are an extract from the 2012 [County Durham Joint Strategic Needs Assessment](#) data re-cast to the AAP geography. These data reflect estimates of adult referrals, (including self referrals), for social care support. People can receive social care support for a variety of different reasons, which are specified below.

### c(i). Adult Referrals:

- The 5 of the 14 AAPs had a higher adult referral rates than the county during 2011/12.

Table 24a: Number of adult referrals, rate per 1000 population 2011/12

Area	18 to 64			65 to 74	75 to 84	85+	Total
	Physical Disability/ Sensory Support <sup>1</sup>	Learning Disability <sup>1</sup>	Mental Health <sup>2</sup>	Older Person <sup>1</sup>	Older Person <sup>1</sup>	Older Person <sup>1</sup>	
3 Towns Partnership	10.9	2.8	15.3	52.7	173.8	373.4	53.1
4 Together Partnership	13.4	3.2	17.2	62.5	204.4	426.1	62.1
Bishop Auckland and Shildon	12.5	4.1	18.2	66.2	177.0	402.5	60.8
Chester-le-Street & District	6.7	1.4	13.1	44.3	140.4	355.0	41.2
Derwent Valley	8.0	2.0	13.8	46.9	148.7	334.0	45.8
Durham	3.9	1.0	12.3	36.4	136.2	352.4	32.7
East Durham	11.8	2.3	14.2	65.3	184.3	368.1	53.9
East Durham Rural	8.3	1.4	12.8	56.4	139.7	365.8	43.4
Great Aycliffe & Middridge	10.0	2.3	14.6	49.2	158.9	373.9	47.9
Mid Durham	7.2	1.6	12.7	45.7	144.0	302.6	40.5
Spennymoor	9.1	2.0	12.5	58.6	160.1	407.9	48.3
Stanley	10.7	1.9	15.2	57.5	167.1	409.5	52.0
Teesdale	6.8	2.7	10.7	37.3	120.3	358.4	43.2
Weardale	7.2	~	10.6	35.4	97.2	289.7	37.0
<b>County Durham<sup>3</sup></b>	9.2	2.2	14.4	54.0	165.6	389.4	49.3

Source: SSID (Social Services Information Database); TEWV (Tees, Esk & Wear Valley NHS Foundation Trust); ONS 2010 Mid Year population estimates. Rate per 1000 population.

1. SSID.

2. TEWV (Tees, Esk & Wear Valley NHS Foundation Trust).

3. County Durham contains all referrals including suppressed values and records not allocated to an AAP.

~ Figures suppressed due to low numbers. Values not included in row totals.

## 9. Altogether Healthier

The following tables are an extract from the 2012 [County Durham Joint Strategic Needs Assessment](#) data re-cast to the AAP geography. These data reflect estimates of adult referrals, (including self referrals), for social care support. People can receive social care support for a variety of different reasons, which are specified below.

### c(ii). Adult Alcohol and Drug Referrals:

Table 24b: Number of adult alcohol and drug referrals, rate per 1000 population 2011/12

- 6 of the 14 AAPs had higher rates of adult referrals for drug and alcohol issues than the county during 2011/12.

Area	Referrals - Rate per 1000 population		
	Alcohol	Drugs	Total
3 Towns Partnership	4.1	1.9	6.0
4 Together	4.7	2.1	6.8
Bishop Auckland and Shildon	5.4	3.1	8.5
Chester-le-Street & District	4.1	2.1	6.2
Derwent Valley	4.8	2.2	6.9
Durham	2.9	0.9	3.9
East Durham	5.2	3.1	8.3
East Durham Rural	3.2	2.0	5.2
Great Aycliffe & Middlesbrough	4.1	1.7	5.8
Mid Durham	4.6	1.4	6.0
Spennymoor	4.8	2.6	7.5
Stanley	6.7	3.3	10.0
Teesdale	2.2	0.6	2.8
Weardale	2.1	0.4	2.5
<b>County Durham<sup>1</sup></b>	<b>4.5</b>	<b>2.2</b>	<b>6.7</b>

Source: County Durham Drug & Alcohol Commissioning Team (DACT); ONS 2010 Mid Year population estimates. Rate per 1000 population.

1. County Durham contains all referrals including suppressed values and unallocated records.

## 9. Altogether Healthier

The following table is an extract from the 2012 [County Durham Joint Strategic Needs Assessment](#) data re-cast to the AAP geography.

### d. Home/Day Care and Direct Payments – Community Based Services

- Nearly 10,600 people received home/day care and direct payments during 2011/12.
- Half of the AAPs in the county had a higher referral rate per 1,000 population than the county.

Table 25: People receiving home care/day care or direct payments 2011/12, rate per 1,000 18+ population

Area	Clients	
	Count	Rate <sup>1</sup>
3 Towns Partnership	611	32.0
4 Together Partnership	452	31.9
Bishop Auckland and Shildon	937	28.7
Chester-le-Street and District	1,093	25.7
Derwent Valley	849	24.5
Durham	1,059	18.9
East Durham	1,839	24.7
East Durham Rural	457	22.4
Great Aycliffe & Middridge	476	23.1
Mid-Durham	713	26.2
Spennymoor	492	30.0
Stanley	709	28.2
Teesdale	524	26.3
Weardale	166	24.5
<b>County Durham</b>	<b>10,597</b>	<b>25.8</b>

Source: SSID (Social Services Information Database); ONS 2010 mid year population estimates

1. Rate per 1000 of the 18+ population.

Further information and analysis on these indicators can be found in the [County Durham Joint Strategic Needs Assessment](#).

## 9. Altogether Healthier

### e. Teenage Conceptions

- The rate of teenage conceptions between 2008 and 2010 was higher in the county than in England & Wales.
- 7 AAPs had higher teenage conception rates than the county.
- 9 AAPs had higher teenage conception rates than England & Wales.

Table 26: Teenage conception pooled data 2008 to 2010 - rate per 1,000 population

AAP/Area	2008-2010 Pooled Data		
	Population <sup>1</sup>	Conceptions <sup>2</sup>	Rate <sup>3</sup>
3 Towns Partnership	1430	65	45.8
4 Together Partnership	1050	57	54.3
Bishop Auckland and Shildon	2513	130	51.7
Chester-le-Street & District	2878	88	30.6
Derwent Valley	2408	99	41.1
Durham	2535	48	18.9
East Durham	5625	284	50.4
East Durham Rural	1493	69	46.5
Great Aycliffe & Middridge	1563	44	28.2
Mid Durham	1672	72	43.1
Spennymoor	1151	62	53.9
Stanley	1750	119	68.0
Teesdale	1,332	36	27.0
Weardale	380	8	19.8
<b>County Durham</b>	<b>27,780</b>	<b>1259</b>	<b>45.3</b>
<b>England &amp; Wales</b>	<b>2,989,100</b>	<b>108,396</b>	<b>36.3</b>

Source: Office for National Statistics (ONS). Pooled data between 2008 and 2010.

1. ONS mid 2010 population estimates - females aged 15 to 17.

2. Teenage conceptions between 2008 and 2010.

3. Rate per 1,000 population.

## 10. Altogether Safer

### a. Crime Rates

- The county had lower rates of crime overall than England & Wales.
- There were lower rates of crime in the county for all groupings compared England & Wales, except for criminal damage/arson and non victim based crimes.

Table 27: Crime Rates per 1,000 population April 2011 to March 2012

AAP/Area	Violence Against the Person (VAP)	Sexual Offences	Acquisitive Crime <sup>2</sup>	Criminal Damage and Arson	Fraud and Forgery	Non-Victim Based Crime <sup>3</sup>	All Crime
3 Towns Partnership	8.6	0.5	19.7	11.2	0.5	4.8	45.2
4 Together Partnership	9.6	0.5	30.6	16.0	0.7	5.9	63.2
Bishop Auckland and Shildon	12.2	0.7	42.1	19.1	0.9	9.0	84.0
Chester-le-Street & District <sup>1</sup>	5.3	0.4	22.5	10.3	1.0	3.2	42.7
Derwent Valley	6.6	0.4	12.9	9.8	0.4	3.6	33.7
Durham	5.4	0.4	27.2	7.7	1.0	4.0	45.8
East Durham	7.8	0.7	27.6	13.1	1.2	4.9	55.3
East Durham Rural	4.1	0.5	19.0	9.6	0.9	2.1	36.1
Great Aycliffe & Middridge	7.4	1.0	22.3	12.4	0.5	4.8	48.4
Mid Durham	4.4	0.7	18.4	7.2	0.3	2.5	33.4
Spennymoor	7.2	0.8	20.8	11.3	1.0	5.6	46.6
Stanley	9.5	0.8	21.2	18.0	0.8	5.7	56.1
Teesdale	5.0	0.2	19.7	4.8	0.4	2.4	32.5
Weardale	2.3	0.4	16.8	5.4	0.2	1.5	26.6
<b>County Durham<sup>4</sup></b>	<b>7.7</b>	<b>0.7</b>	<b>26.3</b>	<b>12.1</b>	<b>1.0</b>	<b>5.3</b>	<b>52.9</b>
<b>England &amp; Wales</b>	<b>13.8</b>	<b>1.0</b>	<b>38.0</b>	<b>11.4</b>	<b>2.6</b>	<b>5.2</b>	<b>72.0</b>

Source: AAP and county data - Durham Constabulary, England & Wales - Crime in England & Wales: Quarterly First Release to March 2012 (July 2012, ONS) ONS Mid 2011 population estimates

1. AAP data includes mapped crimes only, the county and England & Wales rates include all recorded crimes.

2. Acquisitive crime includes burglary, robbery and theft.

3. Non-victim based crimes include public disorder, drug-related, police preventative and other state based crimes.

4. County Durham figures are given for County Durham Community Safety Partnership. The sum of crimes in all AAPs does not therefore equal the county figure.

A full description of the crime types within each crime category is available in Appendix 2 of the [User Guide to Home Office Statistics](#) on the Home Office website.

## 10. Altogether Safer

### b(i). Anti-Social Behaviour<sup>9</sup> – Overall ASB rates

- There are higher rates of ASB in half of the AAPs when compared to the county.
- 6 AAPs have higher rates of environmental ASB than the county.
- 6 AAPs have higher rates of nuisance ASB than the county.
- 7 AAPs have higher rates of personal ASB than the county.

Table 28: ASB Rates per 1,000 population April 2011 to March 2012

Area	ASB Environmental <sup>1</sup>	ASB Nuisance <sup>1</sup>	ASB Personal <sup>1</sup>	ASB All <sup>2</sup>
3 Towns Partnership	9.5	39.5	18.9	67.9
4 Together Partnership	10.1	49.0	22.7	81.8
Bishop Auckland and Shildon	10.3	57.8	27.8	95.9
Chester-le-Street & District	8.0	39.7	15.7	63.4
Derwent Valley	6.0	32.3	15.9	54.2
Durham Area	6.1	31.8	11.2	49.1
East Durham	9.9	44.7	20.0	74.7
East Durham Rural	6.3	37.0	16.5	59.8
Great Aycliffe & Middridge	9.5	48.9	26.4	84.8
Mid-Durham	6.6	29.1	13.2	48.8
Spennymoor	7.6	45.0	21.2	73.7
Stanley	9.0	54.1	23.6	86.7
Teesdale	4.5	20.2	11.0	35.7
Weardale Action	4.6	14.6	10.9	30.0
<b>County Durham<sup>2</sup></b>	<b>8.0</b>	<b>40.2</b>	<b>18.1</b>	<b>66.3</b>

Source: Durham Constabulary, ONS mid-2010 population estimates.

1. National Standards for Incident Recording 2011, National Policing Improvement Agency.

2. The process of mapping incidents to AAP and the county 'may' not produce results that match exactly with those reported by Durham Constabulary.

<sup>9</sup> Anti Social Behaviour reported to the Police.

## 10. Altogether Safer

### b(ii). Anti-Social Behaviour – Youth ASB rates

- 6 AAPs had higher rates of ASB than the county, however all AAPs have seen a general fall in this rate since September 2010.

Table 29: ASB rates in the under 18 population - per 1,000 population April 2011 to March 2012

AAP/Area	Youth ASB <sup>1</sup> - rate per 1000 population (under 18's)				% change
	2010/11		2011/12		
	Count	Rate	Count	Rate	
3 Towns Partnership	879	171.7	649	126.6	-35.6
4 Together Partnership	594	165.5	494	137.6	-20.2
Bishop Auckland and Shildon	2021	223.4	1618	178.8	-24.9
Chester-le-Street & District	1904	178.0	1333	124.6	-42.8
Derwent Valley	1005	112.7	870	97.6	-15.5
Durham	1491	156.0	912	95.4	-63.5
East Durham	3104	156.5	2483	125.2	-25.0
East Durham Rural	753	143.0	633	120.2	-18.9
Great Aycliffe & Middridge	998	172.4	837	144.6	-19.2
Mid Durham	847	133.1	674	105.9	-25.7
Spennymoor	819	199.5	617	150.4	-32.7
Stanley	1417	217.1	1100	168.5	-28.8
Teesdale	438	93.3	325	69.3	-34.8
Weardale	129	96.3	84	62.8	-53.3
County Durham <sup>2</sup>	16420	162.8	12636	125.3	-29.9

Source: Durham Constabulary, ONS mid 2010 population estimates.

As of the 2011/12 reporting year, hoax calls were not included the Anti Social Behaviour category. In order that data can be compared, hoax calls have been removed from the 2010/11 data.

1. ONS mid 2010 population estimates - 0 to 17 years of age.

2. The county figure includes unallocated records as the process of mapping incidents to AAPs may not produce results that match exactly with those results reported at the county level.



## 11. Altogether Greener

### a. Domestic Energy Consumption and Household Energy Efficiency:

- Average domestic energy consumption in the county was higher than in the region or England & Wales.
- 11 AAPs had a higher proportion of assessed households that had a lower energy efficiency rating than the county.
- 5 AAPs had a higher proportion of assessed households that had a higher energy rating than the county as a whole.

Table 30: Average domestic energy use and efficiency rating by council tax dwelling

Area/MSOA	Total Dwelling Stock <sup>1</sup>	Total Consumption Domestic Electricity and Gas per annum per Dwelling <sup>2</sup>	% Assessed <sup>3</sup>	% of assessed with a low rating (between 1 and 35)	% of assessed with a high rating (65 of over)
3 Towns Partnership	11,562	16.6	38.2	3.3	22.3
4 Together Partnership	9,058	16.8	29.4	3.2	33.5
Bishop Auckland and Shildon	20,033	18.0	38.2	1.9	30.4
Chester-le-Street & District	24,662	18.5	39.0	1.5	39.9
Derwent Valley	20,141	19.2	37.3	2.2	32.9
Durham	25,111	19.4	50.0	1.4	38.9
East Durham	42,564	17.6	85.9	10.3	33.3
East Durham Rural	11,355	18.3	46.8	1.9	38.3
Great Aycliffe and Middridge	11,801	18.0	46.5	1.5	41.0
Mid Durham	15,182	17.6	54.3	2.2	35.6
Spennymoor	9,518	18.3	22.0	3.6	29.3
Stanley	15,233	18.1	48.2	1.5	31.0
Teesdale	11,844	14.1	36.4	9.6	18.8
Weardale	4,141	13.6	17.7	7.9	26.0
<b>County Durham</b>	<b>232,205</b>	<b>17.8</b>	<b>49.4</b>	<b>4.9</b>	<b>33.9</b>
<b>North East</b>	<b>1,171,918</b>	<b>17.7</b>			
<b>England &amp; Wales</b>	<b>24,052,206</b>	<b>17.1</b>			

Source: Department of Energy and Climate Change 2011 (2009 data)/Communities and Local Government Neighbourhoods Statistics 2011 (2009 data); Durham County Council December 2010.

1. Council Tax Dwellings 2009.

2. Megawatt hours per annum per council tax dwelling. 1 megawatt = 1000 kilowatts. Example: Using a 60 watt bulb for 1000 hours uses 0.06 megawatts of electricity.

3. Data extracted from the Durham County Council household energy database.

## Appendices

Table 35: Percentage of the population living in deprived areas in AAPs by domain

AAP/Area	ID2010 Domain Overall		Income		Supplemental Income Indices <sup>10</sup>			
	Top 10%	Top 30%	Top 10%	Top 30%	IDACI		IDAOPi	
	Top 10%	Top 30%	Top 10%	Top 30%	Top 10%	Top 30%	Top 10%	Top 30%
3 Towns Partnership	25.5	60.1	25.5	53.7	6.2	40.9	12.5	46.8
4 Together Partnership	8.5	63.1	8.5	55.0	8.5	46.6	11.2	57.8
Bishop Auckland and Shildon	33.1	70.1	21.5	62.7	7.5	55.2	22.7	62.7
Chester-le-Street & District	2.9	35.9	2.9	32.8	2.9	15.3	2.9	30.5
Derwent Valley	0.0	33.1	0.0	36.4	0.0	21.5	3.4	39.7
Durham	2.7	13.8	2.7	15.9	2.7	9.9	2.7	15.4
East Durham	29.0	73.9	13.0	59.4	11.4	54.3	1.6	47.2
East Durham Rural	0.0	40.9	0.0	40.9	0.0	37.4	0.0	17.0
Great Aycliffe & Middridge	10.6	42.1	16.1	36.2	10.5	30.5	5.0	42.3
Mid Durham	0.0	28.7	0.0	28.7	0.0	35.7	0.0	40.4
Spennymoor	8.3	39.4	12.4	39.4	0.0	35.5	7.1	46.6
Stanley	5.1	70.5	22.3	85.2	5.6	70.3	14.3	80.2
Teesdale	0.0	10.3	0.0	10.3	0.0	4.0	0.0	15.1
Weardale	0.0	2.1	0.0	2.1	0.0	2.1	0.0	2.1
<b>County Durham</b>	<b>11.4</b>	<b>45.4</b>	<b>9.0</b>	<b>42.3</b>	<b>4.8</b>	<b>34.6</b>	<b>5.5</b>	<b>39.9</b>

Source: CLG Index of Deprivation 2010, ONS 2008 Population estimates.

<sup>10</sup> These two supplemental income indices represent the proportion of children aged 0-15 living in income deprived households (Income Deprivation Affecting Children Index - IDACI) and the proportion of older people aged 60 and over living in income deprived households (Income Deprivation Affecting Older Persons Index - IDAOPI) respectively.

	ID2010 Domain Overall		Employment		Health		Education		Housing		Crime		Living environment	
AAP/Area	Top 10%	Top 30%	Top 10%	Top 30%	Top 10%	Top 30%	Top 10%	Top 30%	Top 10%	Top 30%	Top 10%	Top 30%	Top 10%	Top 30%
3 Towns Partnership	25.5	60.1	29.4	79.9	34.1	100.0	25.5	54.5	0.0	4.6	0.0	34.7	0.0	0.0
4 Together Partnership	8.5	63.1	47.1	93.0	50.0	100.0	33.5	73.7	0.0	0.0	16.3	21.6	0.0	0.0
Bishop Auckland and Shildon	33.1	70.1	56.3	83.8	62.9	96.7	23.7	56.4	3.1	11.0	11.1	48.2	0.0	6.6
Chester-le-Street & District	2.9	35.9	15.7	49.4	9.6	53.6	2.9	33.7	0.0	13.3	5.1	30.2	0.0	0.0
Derwent Valley	0.0	33.1	3.4	65.3	7.7	60.8	0.0	33.9	0.0	4.6	0.0	4.4	0.0	0.0
Durham	2.7	13.8	4.5	23.6	4.5	36.9	7.8	20.7	0.0	6.3	0.0	3.3	0.0	0.0
East Durham	29.0	73.9	61.2	89.2	62.1	92.1	32.6	73.2	0.0	4.6	6.3	37.1	0.0	0.0
East Durham Rural	0.0	40.9	29.9	60.1	23.2	65.5	10.7	40.9	0.0	8.3	0.0	5.5	0.0	0.0
Great Aycliffe & Middridge	10.6	42.1	26.0	77.1	37.0	93.1	16.1	48.0	0.0	0.0	0.0	21.2	0.0	0.0
Mid Durham	0.0	28.7	14.2	54.3	0.0	45.1	14.2	40.4	0.0	9.1	0.0	0.0	0.0	0.0
Spennymoor	8.3	39.4	39.4	68.4	39.4	82.6	10.1	48.0	0.0	4.7	0.0	17.2	0.0	0.0
Stanley	5.1	70.5	60.5	90.7	5.1	80.2	15.2	75.2	0.0	0.0	14.3	37.3	0.0	0.0
Teesdale	0.0	10.3	4.0	26.2	4.0	34.8	0.0	10.3	20.1	37.6	0.0	0.0	0.0	3.8
Weardale	0.0	2.1	2.1	23.8	2.1	61.4	0.0	2.1	37.9	39.2	0.0	2.1	0.0	0.0
<b>County Durham</b>	<b>11.4</b>	<b>45.4</b>	<b>30.8</b>	<b>64.7</b>	<b>27.5</b>	<b>70.7</b>	<b>15.3</b>	<b>46.7</b>	<b>1.8</b>	<b>8.2</b>	<b>4.1</b>	<b>21.6</b>	<b>0.0</b>	<b>0.7</b>

Source: CLG Index of Deprivation 2010, ONS 2008 Population estimates.

t: 03000 268 032  
e: [researchconsulation@durham.gov.uk](mailto:researchconsulation@durham.gov.uk)  
w: [www.durham.gov.uk/stats](http://www.durham.gov.uk/stats)