

## Sauk Centre - D39

www.ci.sauk-centre.mn.us

39115 County Road 186, Sauk Centre, MN 56378



**Airport Manager:** Vicki Willer - 320-352-2203 -  
vicki.willer@ci.sauk-centre.mn.us

**Contact Person:** Vicki Willer - 320-352-2598 -  
vicki.willer@ci.sauk-centre.mn.us

**AWOS/ASOS:** 320-352-0136 - VHF 118.475

**MnWAS Loc/Hrs:** Arrival/Departure Building - 24 hours

**Attended:** All/Mon-Fri/0800-1700

**Available Fuel:** 100LL - available 24 hours with credit card

**FBO(s):** None

**Businesses:** Central Planes Aviation, Inc. - 320-352-3013 - 122.9 -  
centralplanes@live.com

**Ground Transport:** Courtesy car  
TriCAP Transit Connection -  
www.tricap.org/bus\_services.html

**Food Service:** Water

**Dining:** Trucker's Inn - 320-352-3429 - 3 miles  
Ding Dong Café - 320-352-6853  
Palmer House Hotel & Restaurant - 320-352-3431 -  
3 miles  
Mainstreet Coffee - 320-351-3512 - 3 miles  
Elmerz Dining & Banquet - 320-352-4243 - 2 miles  
JT's Pub & Grill - 320-351-5900 - 2 miles  
Four Seas Buffet - 320-351-8888 - 2 miles  
Nics Diner - 320-351-6427 - 3 miles  
Outpost - 320-351-7678  
Jitters Java - 320-352-1390

**Lodging:** Palmer House Hotel - 320-352-3431  
AmericInn Motel - 320-352-2800  
Gopher Prairie - 320-352-2275  
Guest House Motel - 320-351-7256

**Airport Events:** Annual Fly-In - July

**Underwing Camp:** Yes

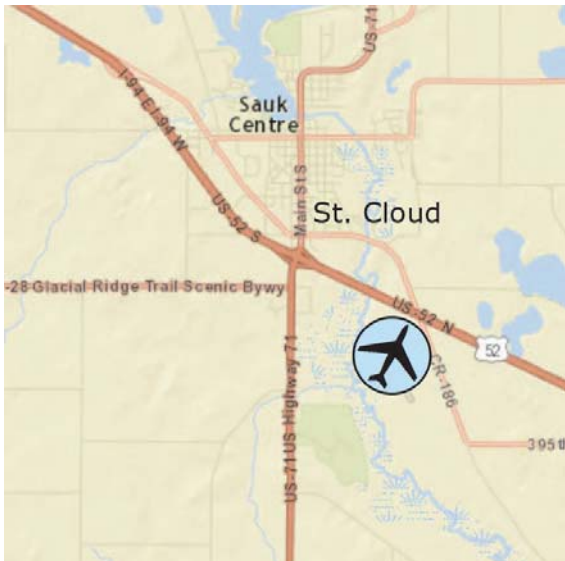
**Campgrounds:** Sinclair Lewis Park - 80 sites - 4 miles

**Local Attractions:** Grey Stone Golf Course - 6 miles; Lynx National Golf  
Course - 4 miles; Sauk Centre Country & Golf Club -  
3½ miles; Sinclair Lewis Museum; many lakes & resorts  
with good fishing; parks and splash pad

**Comments:** Free overnight aircraft parking  
Arrival/Departure Building - 320-352-2598  
22-unit hangar available for rent  
Alternate contact person: Tom Wenker - 320-352-3013  
or 320-250-3046

Field Elev: 1244' TPA: 2044' (800' AGL)

Sauk Centre - D39



SEC. CH: TWIN CITIES

LAT: 45-42-23.624N

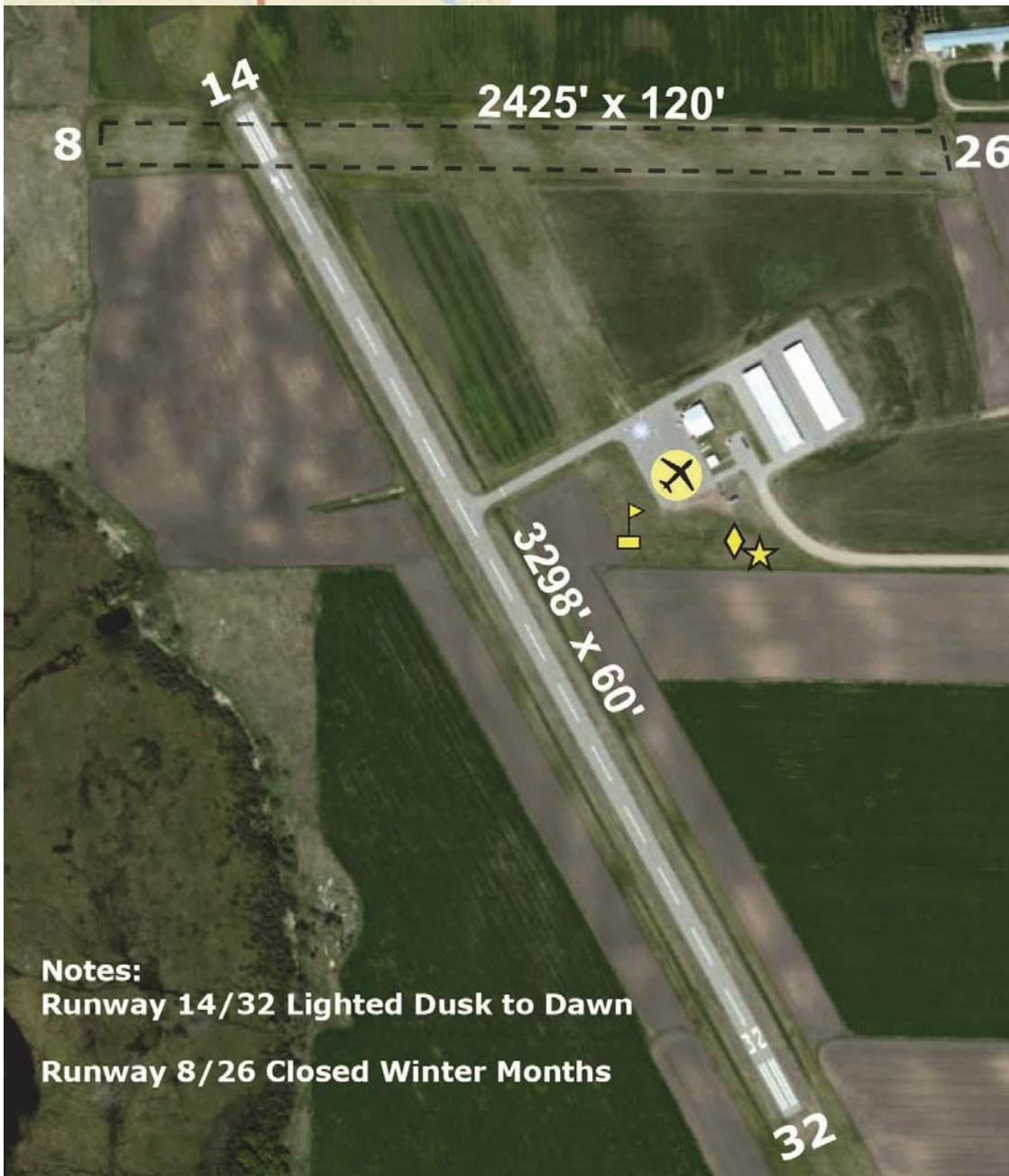
LONG: 094-56-00.231W

Approaches: RNAV

COMM: 122.9

WX: VHF 118.475

CTR: 126.1 MSP



**Notes:**

Runway 14/32 Lighted Dusk to Dawn

Runway 8/26 Closed Winter Months

Sauk Centre Municipal Airport